

Seasonal Event Information

July 2016

★ Event schedules are subject to change.
Please contact event organizers before you go.



Events Held in Hiroshima City

Every Wednesday until December 28, 2016 ☺ July 6, 13 20 & 27; August 3, 10, 17, 24 & 31

Hiroshima Kagura ひろしまけんみんぶんか 広島県民文化センター ひろしまかぐら 「広島神楽」 ていきこうえん 定期公演

TIME: 7:00pm – 8:45pm (The venue will open at 6:00pm.)

VENUE: Hiroshima Kenmin Bunka Center, Ote-machi, Naka-ku (located near Hondori Shopping Street)

ACCESS: From Kamiya-cho-nishi or Hondori Streetcar Stops, walking time to destination is 3 minutes.

TICKETS: ¥1,000 ✧ All non-reserved seats
✧ Tickets will be sold from 5:00pm on the performance date at the center.
There are no advance tickets.

INQUIRIES: Hiroshima Kenmin Bunka Center 082-245-2311

❖ “Hiroshima Kagura” Special Performance ❖

DATE & TIME: Sat., August 13 2:00pm – 6:00pm (The venue will open at 1:00pm.)

VENUE: Hiroshima Kenmin Bunka Center

TICKETS: ¥500 ✧ All non-reserved seats
✧ Tickets will be sold from noon on the performance date at the center.

Sun., June 19 – Thurs., July 7

Ajisai (Hydrangea) Festival at Kannon-ji Temple かんのんじ 観音寺あじさい祭り まつり

TIME: 8:30am – 5:00pm ☼ 10:00am – 5:00pm on June 19

PLACE: Kannon-ji Temple, Saeki-ku

ACCESS: Get on a bus bound for Higashi-kannondai Danchi from Itsukaichi Streetcar Stop or JR Itsukaichi Station (JR Sanyo Line) south exit and get off at Kannondai Iriguchi. Walking time to destination: 5 minutes

INQUIRIES: Kannon-ji Temple 082-924-1340

☐ 5,000 hydrangeas of 350 varieties will bloom from the middle of June to the beginning of July at Kannon-ji Temple.

☐ On June 19, there will be an opening to public of *nehanzu* (a picture of Buddha entering Nirvana), serving of *amacha* tea and gifting of flower seeds to the first 200 visitors. *Matcha* tea will be served during the event period. *Fūrin*, a wind-bell festival, will also be held.

Sat., July 2 – Sun., Sept. 25

Kinoshita Circus in Hiroshima きのした 木下サーカス ひろしまこうえん 広島公演

PLACE: Special Venue at Hiroshima Nishi Hikojo Atochi (the site of Hiroshima Nishi Airport), Kanon Shin-machi, Nishi-ku

ACCESS: Take the No. 3 bus bound for Kanon Marina Hop and get off at Kanon Marina Hop. Walking time to destination: 3 minutes

TICKETS FOR NON-RESERVED SEATS

- ◆ Advance: High school students and up - ¥2,800
- 3 years old – Junior high school students - ¥1,800



Please feel free to contact the International Exchange Lounge at 082-247-9715.

E-mail: golounge@pcf.city.hiroshima.jp

July 2016

- ◆ At the door: High school students and up - ¥3,200
3 years old – Junior high school students - ¥2,200
- ◇ Advance tickets are available at Ticket PIA, Lawson, Seven-Eleven, e+, Rakuten Ticket, etc.
- ◇ Reserved seats are also sold. Please check the official homepage (see below) for more information.

SCHEDULE:

	Mon., Tue. & Wed.	Fri. & Jul. 2	Sat.	Sun. & National holidays
10:20am	—	—	—	○
11:00am	○	—	○	—
1:00pm	—	○	—	○
1:40pm	○	—	○	—
3:40pm	—	○	—	○



CLOSED: Every Thursday (except Aug. 11 & Sept. 22), July 6, Aug. 3, 10 & Sept. 7, 21

INQUIRIES: Kinoshita Circus Hiroshima Office

082-234-0045

URL: <http://www.kinoshita-circus.co.jp/>

Sun., July 3**Tanabata (star festival) Tea Ceremony**

たなばたちやかい
七夕茶会

TIME: Not finalized

PLACE: Shukkeien Garden

ACCESS: Take a streetcar on the Hiroden Hakushima Line and get off at Shukkeien-mae. Walking time to destination: 5 minutes

FEE: ¥700 for the tea ceremony

◇ Admission fee for the garden (below) is also required.

(Adults-¥260, University & High school students-¥150
Junior high & Elementary school students- ¥100)

INQUIRIES: Shukkeien Garden 082-221-3620

☐ *Tanabata* is a star festival usually held on July 7 each year.

**Sun., July 3 & 17****Hiroshima Minato Marché**

ひろしまみなとマルシェ

TIME: 8:00am – 2:00pm

PLACE: Open Space between East and West Terminal of Hiroshima Port, Minami-ku

ACCESS: Take the No. 1, 3 or 5 streetcar bound for Hiroshima Port and get off at the last stop, Hiroshima Port.

INQUIRIES: Hiroshima Minato Marché Office 082-255-6646

☐ You can buy and taste locally-grown fresh vegetables and other food products at the marché.

Sun., July 10**Sister and Friendship City Day Event: Journée de Montréal**

しまい ゆうこうとし ひ きねん ひ
姉妹・友好都市の日記念イベント モントリオールの日

TIME: 1:30pm – 3:45pm

PLACE: Fukuya Department Store, 6th Floor, Hiroshima Station location, Minami-ku

ACCESS: From JR Hiroshima Station, walking time to destination is 3 minutes.

ADMISSION FEE: Free

INQUIRIES: *Hiroshima Heiwa Bunka Center, Kokusai Koryu Kyoryoku Ka* (Hiroshima Peace Culture Foundation, International Relations and Cooperation Division) 082-242-8879

☐ This event includes a special performance by Jeremy Eaton, a Canadian street performer, sales of Canadian products, an exhibition, etc.

Please feel free to contact the International Exchange Lounge at 082-247-9715.

E-mail: golounge@pcf.city.hiroshima.jp

July 2016

Sat., July 16 & Sun., July 17**Hozuki-ichi (ground cherry pod fair) at Ushita** うした まつ 牛田ほおずき祭り**TIME:** ♦ Jul. 16: 6:00pm – 9:30pm ♦ Jul. 17: 6:00pm – 9:00pm**PLACE:** From the Ushita-asahi 2-chome Rotary to the intersection in front of FRESTA Ushita in Higashi-ku**ACCESS:** ① From *Astramline* Ushita Station, walking time to destination is 10 minutes.

② From JR Shin-Hakushima Station, walking time to destination is 13 minutes.

INQUIRIES: *Ushita Shotengai Shinko Kumiai* 082-227-5050**Sun., July 17 & Mon., July 18****Sumiyoshisan Festival** すみよしさん**TIME:** There is no specific starting time. Most people come in the evening.**PLACE:** Sumiyoshi Shrine, Sumiyoshi-cho, Naka-ku**ACCESS:** ① Take the No. 24 bus and get off at Sumiyoshi-cho. Walking time to destination: 5 minutes

② Take the No. 3, 6, or 10 bus and get off at Kako-machi. Walking time to destination: 3 minutes

INQUIRIES: Sumiyoshi Shrine 082-241-0104☑ Fireworks will be set off from 8:00pm on both days. Rowing a boat of an ancient style in the river and *kagura* performances will also be held.**Sat., July 23****2016 Hiroshima Minato Fireworks Festival** ひろしま ゆめ はなびたいかい 2016広島みなと 夢花火大会**TIME:** 8:00pm – 9:00pm ♦ Opening event: 7:00pm – 7:40pm**PLACE:** Hiroshima Port, Minami-ku**ACCESS:** Take a streetcar bound for Hiroshima-ko (Hiroden Ujina Line) and get off at Kaigan-dori. Walking time to destination: 10 minutes**INQUIRIES:** Hiroshima *Matsuri* Committee 082-247-6805☑ The fireworks will be canceled or postponed until Sat., Aug. 27 if it rains heavily on the 23rd.**Mon., August 1****Memorial Service for the Atomic Bomb Victims at Shukkeien Garden**げんぱくぎせいしやいれいくようしき なら へいわ ねが つど
「原爆犠牲者慰霊供養式」並びに「平和を願う集い」**TIME:** 9:00am – 10:00am**PLACE:** Shukkeien Garden**ACCESS:** Take a streetcar on the Hiroden Hakushima Line and get off at Shukkeien-mae. Walking time to destination: 5 minutes**FEE:** Admission fee for the garden (Adults-¥260, University & High school students-¥150)
(Junior high & Elementary school students-¥100)**INQUIRIES:** Shukkeien Garden 082-221-3620**Mon., August 1****Ottô-ran Festival (fire festival) at Eba Shrine** え ば じんじや ひ まつ 衣羽神社 火祭り (オットーラン 祭り)**TIME:** 8:00pm – 10:00pm**PLACE:** Around Eba Port, Eba-minami, Naka-ku**ACCESS:** From Eba Streetcar Stop, walking time to destination is 12 minutes.**INQUIRIES:** Eba Shrine 082-291-8994

Please feel free to contact the International Exchange Lounge at 082-247-9715.

E-mail: golounge@pcf.city.hiroshima.jp

July 2016

Sat., August 6**The 71st Peace Memorial Ceremony**だい かいへいわきねんしきてん
第71回平和記念式典**TIME:** 8:00am – 8:45am**PLACE:** In front of the Cenotaph for the A-Bomb Victims, Peace Memorial Park**INQUIRIES:** *Shimin Katsudo Suishin Ka* (Citizens Activities Promotion Division, the City of Hiroshima)
082-504-2103

☐ On August 6th, at 8:15am, at the sound of a bell rung by a representative from the bereaved families and one youth representative, a moment of silence is observed for the deceased. At that moment, factory sirens as well as temple and church bells are rung throughout the city, and Hiroshima is deeply wrapped in prayer. The Mayor of Hiroshima delivers a peace declaration addressed to the whole world at the ceremony. On this day, people recall what happened on August 6th, 1945, and in their prayers, ponder the meaning of peace.

<NOTICE>

Reserved seating with receivers that will broadcast simultaneous English interpretations to non-Japanese speaking guests of the 2016 Peace Memorial Ceremony is now full. If you decide apply now, you will be added to a waiting list.

Seating is available in the Unassigned Seating area. However, as seating is open to anyone on a first come, first served basis, you are encouraged to arrive early. Reservations are not accepted for this seating area. Please note that the International Conference Center will be open to the public and will display live footage (Japanese only, no interpretation receivers available) of the Ceremony in the Himawari Room of the 2nd basement floor.

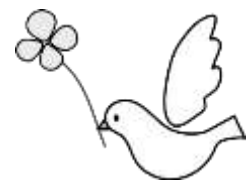
Please see the Hiroshima City website (<http://www.city.hiroshima.lg.jp/www/contents/1463460808726/index.html>) or contact the International Relations Division of the City of Hiroshima (Tel: 082-504-2106 / e-mail: kokusai@city.hiroshima.lg.jp) for more information.

Sat., August 6**Floating Paper Lanterns**

ピースメッセージとうろうなが流し

TIME: 6:00pm – 10:00pm ◆ Participants will be accepted until 9:00pm.**PLACE:** Motoyasugawa River around A-bomb Dome and other places**ACCESS:** Get off at Genbaku Dome-mae Streetcar Stop.**INQUIRIES:** *Toro-nagashi* Executive Committee 082-245-1448

☐ Paper lanterns will be floated down the river to console the souls of the deceased. You may buy a lantern (¥600) and let it float away. Lanterns will also be sold at the Rest House (Tourist Information Center) inside the Peace Memorial Park.

**Thurs., August 18 – Mon., August 21****The 16th International Animation Festival Hiroshima 2016**だい かいひろしまこくさい
第16回広島国際アニメーションフェスティバル**VENUE:** JMS Aster Plaza, Kako-machi, Naka-ku**ACCESS:** Take the No. 24 bus and get off at Kako-machi. Walking time to destination: 2 minutes**TICKETS:** ☺ Free admission for elementary school students and under.

Division		Advance	At the Door
One Program Ticket	Adults	¥1,000	¥1,200
	University students	¥800	¥1,000
	Senior high & Junior high school students	¥600	¥700
One Day Pass	Adults	¥2,500	¥3,000
	University students	¥2,000	¥2,400

Please feel free to contact the International Exchange Lounge at 082-247-9715.

E-mail: golounge@pcf.city.hiroshima.jp

July 2016

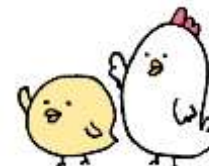
	Senior high & Junior high school students	¥1,500	¥1,800
All Program Pass	Adults	¥10,000	¥12,000
	University students	¥8,000	¥10,000
	Senior high & Junior high school students	¥6,000	¥7,000
Group Discount (Over 15 tickets)		10% discount	

<NOTES>

- ◇ “University students” includes university (college) students, junior college students and special technical school students who are 18 years old and up.
- ◇ Elementary school students and under will be free of charge but should be accompanied by their guardians.
- ◇ Children who are 2 years old and under cannot enter the competition program.
- ◇ Advance tickets are available at major ticket offices in Hiroshima city:

EDION Hiroshima *Honten*, Fukuya Department Store (Hiroshima Station Square Store), *Alpark* Tenmaya, *Chuo Shoten* Bookstore (inside SUNMALL), Hiroshima *Yume* Plaza, Movie Theaters (*Hatchoza*, Salon Cinema & Cine Twin), JMS Aster Plaza, every *Kumin Bunka Center* (Ward Community Cultural Center), *Hiroshima-jo* (Hiroshima Castle), *Kyodo Shiryō Kan* (Hiroshima City Museum of History and Traditional Crafts), *Kodomo Bunka Kagaku Kan* (Children’s Museum of Culture and Science), *Ebayama Kisho Kan* (Hiroshima City Ebayama Museum of Meteorology), *Eizo Bunka Library* (Hiroshima City Cinematographic and Audio-Visual Library) & *Hiroshima-shi Gendai Bijutsu Kan* (Hiroshima City Museum of Contemporary Art)

INQUIRIES: International Animation Festival Organizing Committee (inside Aster Plaza)
082-245-0245 URL: <http://hiroanim.org/>



Sat., October 29

2016 Autumn Sumo Tour in Hiroshima

おおずもうひろしまばしょ
大相撲広島場所

TIME: 8:00am – 3:00pm

PLACE: Hiroshima Sun Plaza Hall, Nishi-ku

ACCESS: From JR Shin Inokuchi Station (JR Sanyo Line) or Shoko Center Iriguchi Streetcar Stop (Hiroden Miyajima Line), walking time to destination is 5 minutes.

TICKETS:

1st Floor

- “Tamari” Seats (ringside)
S* - ¥14,000/person A* - ¥13,000/person
 - Floor Seats
S* - ¥48,000 for 4 seats A - ¥40,000 for 4 seats
 - Chair Seats
A - ¥12,000/person B - ¥11,000/person C - ¥10,000/person D - ¥9,000/person
 - Seats for Persons with Disabilities: ¥4,500/person
- <Seats with “*”> You can take a special sumo cushion home as a souvenir. (Cushions are also available for ¥1,000 (advance sale) and ¥1,500 (at the door)).

2nd Floor (chair seats)

- Reserved Seats: E - ¥8,000/person F - ¥7,000/person
- Non-reserved Seats: ¥5,000/person

Please feel free to contact the International Exchange Lounge at 082-247-9715.

E-mail: golounge@pcf.city.hiroshima.jp

July 2016

RESERVATION & INQUIRIES: 082-532-1701 (Mon. – Fri., 10:00am – 6:00pm)

◇ You can order a *bento* (lunch box; ¥2,000) with tea as well.

◇ You may not be allowed to bring any food or drink to the venue other than this *bento*.

<Notice> *Bento* reservations will be accepted between Oct. 19 and 27 at Musashi (a *bento* shop; Tel. 082-291-6340)

Events Held on Miyajima

Thurs., July 7

Seven Gods of Fortune Festival

しちふくじんじゆふくさい
七福神授福祭

TIME: From 11:00am onward

PLACE: Daishoin Temple, Miyajima

ACCESS: Get off at JR Miyajima-guchi Station (JR Sanyo Line) or the Miyajima Streetcar Stop (Hiroden Streetcar Miyajima Line), then take a ferry to Miyajima.

INQUIRIES: Daishoin Temple 0829-44-0111

☑ Buddhist music service in dedication to *Shichifukujin* (Seven Gods of Fortune) will be held.

Fri., July 8

Ichitate-sai

いちたてさい
市立祭

PLACE: Itsukushima Shrine, Miyajima

ACCESS: Get off at JR Miyajima-guchi Station (JR Sanyo Line) or the Miyajima Streetcar Stop (Hiroden Streetcar Miyajima Line), then take a ferry to Miyajima.

FEE: Admission fee for Itsukushima Shrine

(Adults & University students-¥300 High school students-¥200
Junior high & Elementary school students-¥100)

INQUIRIES: Itsukushima Shrine 0829-44-2020

☑ After the ritual ceremony, *bugaku* (traditional Japanese imperial court dance music) will be performed.

Wed., July 20

Miyajima Kangen-sai Festival

かんげんさい
管絃祭

TIME: From 4:00pm onward

PLACE: Itsukushima Shrine and other shrines on Miyajima

ACCESS: Get off at JR Miyajima-guchi Station (JR Sanyo Line) or the Miyajima Streetcar Stop (Hiroden Streetcar Miyajima Line), then take a ferry to Miyajima.

FEE: Admission fee for Itsukushima Shrine

(Adults & University students-¥300 High school students-¥200
Junior high school & Elementary school students-¥100)

INQUIRIES: Itsukushima Shrine 0829-44-2020

☑ The *Kangen-sai* Festival began in the Heian Era (A.D.794 – A.D.1185). *Kangen* is traditional Japanese music played with *San-kan* (three flutes), *San-ko* (three drums) and *San-gen* (three strings). The *Kangen-bune* boat cruises while musicians on-board play this unique music through Otorii Gate to the Jigozen Shrine located on the opposite bank. It then proceeds to Nagahama and Omoto Shrines on Miyajima Island and returns to Itsukushima Shrine. Itsukushima *Kangen-sai* Festival is one of the three largest boat festivals in Japan.



Please feel free to contact the International Exchange Lounge at 082-247-9715.

E-mail: golounge@pcf.city.hiroshima.jp

July 2016

Wed., July 20**Lantern Parade in Miyajima** ちょうちん行列ぎょうれつ**TIME:** From 9:00pm onward**PLACE:** Lanterns will be given out for free in front of Nagahama Shrine.**ACCESS:** Get off at JR Miyajima-guchi Station (JR Sanyo Line) or the Miyajima Streetcar Stop (Hiroden Streetcar Miyajima Line), then take a ferry to Miyajima.**INQUIRIES:** *Miyajima Kanko Kyokai* (Tourist Association) 0829-44-2011

☑ This parade used lanterns to welcome the *Kangen-bune* boat to Nagahama Shrine on its return from Jigozen Shrine. After the boat reaches Nagahama Shrine, participants will parade towards Itsukushima Shrine.

Events Held Outside of Hiroshima City

Sat., Sun. & national holidays**Sake Brewery Opening** ようこそ醸華町西条じょうかまちさいじょう**PLACE:** Sake Breweries, Higashihiroshima City**ACCESS:** Get off at JR Saijo Station (JR Sanyo Line).**FEE:** Free**INQUIRIES:** *Saijo Sakagura-dori Kanko Annai-jo*

Tel. & Fax 082-421-2511 (10:00am – 4:00pm, closed on Mondays)

☑ Some sake breweries open to the public on Sat., Sun. & national holidays. Signboards with the words “ようこそ醸華町西条” (“*Yokoso Jokamachi Saijo*”) will be placed in front of the opened breweries.

Wed., June 1 – Sat., September 10**Cormorant Fishing in Miyoshi** 三次の鵜飼みよし うかい**TIME:** 7:45pm – 8:45pm (Cruising will be canceled if it rains heavily.)**PLACE:** *Tokaichi Shinsui Koen* (Park), Miyoshi City**ACCESS:** From JR Miyoshi Station (JR Geibi Line), walking time to destination is 15 minutes.**PASSENGER FARE:** ✧ Please note that reservations are required.

- ◆ Sunday – Thursday: Junior high school students and up-¥2,500
Elementary school students-¥1,250

✧ Passenger fare will be different on Friday and Saturday. Please ask the tourist association below for more information.

RESERVATIONS & INQUIRIES: *Miyoshi City Kanko Kyokai* (Tourist Association) 0824-63-9268

☑ Fishermen start out at night with lanterns and cormorants on small wooden boats. The birds are trained to catch *Ayu* (sweetfish). Very unique white-colored cormorants (a type of water fowl, usually with black feathers) were donated by Yaan in Szechuan, China, Miyoshi's friendship city, and can be seen only in Miyoshi.

Sat., July 2**Takehara Tanabata Festival (Star Festival)** たけはら七夕まつりたなばた**PLACE:** Around the shopping street in front of JR Takehara Station, Takehara City**ACCESS:** Get off at JR Takehara Station (JR Kure Line).**INQUIRIES:** *Takehara Ekimae Shotengai Shinko Kumiai* 0846-22-5542

☑ *Tanabata* is a star festival usually held on July 7 each year. Stage performances, food kiosks, etc. will be held.

Please feel free to contact the International Exchange Lounge at 082-247-9715.

E-mail: golounge@pcf.city.hiroshima.jp

July 2016

**Sun., July 3**

Green Green Music Festival '16 グリーングリーンミュージックフェスティバル'16

PLACE: Koushin-ji Temple, Jinseki Kogen-cho**ACCESS:** ① From Fukuyama I.C. on the Sanyo Expressway, drive time to destination is 40 minutes.
◇ A free shuttle bus will be available from the parking lot to the temple.② From JR Fukuyama Station (JR Sanyo Line), take a free shuttle bus to *Koushin-ji no Yu "Yukkura"*, a spa facility located next to Koushin-ji Temple.**TICKETS:** Advance - ¥5,000 ◇ Free admission for junior high school students and under if they are accompanied by their guardians.**INQUIRIES:** Koushin-ji Temple 0847-85-2368Executive Committee E-mail: bestwishes2000@mail.goo.ne.jpURL: <http://greenx2fes.web.fc2.com/>**Sat., July 9**

Otebi Festival てびしんじ お手火神事

TIME: From 8:00pm onward**PLACE:** Nunakuma Shrine, Tomo-cho, Fukuyama City**ACCESS:** Take a bus from JR Fukuyama Station (JR Sanyo Line) and get off at Tomo-no-ura. Walking time to destination: 10 minutes**INQUIRIES:** Nunakuma Shrine 084-982-2050

▣ *Otebi* is a fire festival in which men carry three torches weighing about 150kg and offer them to the shrine. This is a traditional festival which has been held since the Kamakura Period (1185A.D. – 1393A.D.).

This is designated as a Fukuyama City intangible folklore cultural asset.

Sun., July 10

Sakagura Walking Tour (Free) さかぐら 酒蔵のまち てくてくガイド

TIME: Tour will start on an as-needed basis between 10:00am and 11:00am.**MEETING PLACE:** *Saijo Sakagura-dori Kanko Annai-jo* (Tourist Information Center), Higashihiroshima City**ACCESS:** Get off at JR Saijo Station (JR Sanyo Line).**FEE:** Free**INQUIRIES:** *Saijo Sakagura-dori Kanko Annai-jo* Tel. & Fax 082-421-2511

▣ A volunteer guide will show you *Sakagura-dori* (Sake Brewery Street). During the tour you will be able to taste sake and the purified water that is used to make it.

▣ A regular guided tour (fee-based) is also held every day except on the 10th. An English speaking guide is available. Please contact the *Saijo Sakagura-dori* Tourist Information Center in advance.

Sun., July 10

Oyama Shrine Tenjin Nagoshi-sai (Summer Festival) おおやまじんじゃてんじんなごしさい 大山神社天神夏越祭

TIME: 1:00pm – 9:00pm**PLACE:** Oyama Shrine, Innoshima Habu-cho, Onomichi City**ACCESS:** From Innoshima-kita I.C. on the Shimanami Kaido Expressway, driving time to destination is 10 minutes.**INQUIRIES:** Oyama Shrine 0845-22-0827

Please feel free to contact the International Exchange Lounge at 082-247-9715.

E-mail: golounge@pcf.city.hiroshima.jp

July 2016

Wed., July 13 & Thurs., July 14**Gion Matsuri Festival at Isomiya Hachiman Shrine**いそみやはちまんじんじゃ ぎおんまつり
磯宮八幡神社 祇園祭

SCHEDULE: ♦ Jul. 13: Ritual – From 5:00pm onward
 Pre-event (*Kagura* performance) – From 6:00pm onward
 ♦ Jul. 14: Ritual – From 10:00am onward
 Events (stage performance, etc.) – From 6:00pm onward

PLACE: Isomiya Hachiman Shrine, Takehara City**ACCESS:** From JR Takehara Station (JR Kure Line), walking time to destination is 7 minutes.**INQUIRIES:** Isomiya Hachiman Shrine 0846-22-2529**Fri., July 15 – Sun., July 17****Tenjin-sai Festival**てんじんさい
天神祭**TIME:** ♦ Jul. 15: From 5:00pm onward ♦ Jul. 16: From 4:00pm onward ♦ Jul. 17: From 2:00pm onward**PLACE:** Misode Tenmangu Shrine, Onomichi City**ACCESS:** From Ropeway Sanroku Station, walking time to destination is 2 minutes.

👉 Ways to get to Ropeway Sanroku Station 👈

① From JR Onomichi Station (JR Sanyo Line), walking time to destination is 15 minutes.

② Take a bus from JR Onomichi Station and get off at Nagae-guchi.

INQUIRIES: Misode Tenmangu Shrine 0848-37-1889☑ This is Misode Tenmangu Shrine's summer festival. People carrying *mikoshi*, a portable *shinto* shrine, will go up and down the 55 steps to the shrine.**Wed., July 20****Hatsuka-no-ichi Market**はつか いち
廿日の市**TIME:** 8:30am – 10:30am**PLACE:** *Shingu Chuo Koen* (Park), Hatsukaichi City**ACCESS:** From Hatsukaichi Shiyakusho-mae (Hiroden Streetcar Miyajima Line), walking time to destination is 3 minutes.**INQUIRIES:** *Hatsukaichi Kanko Kyokai* (Tourist Association) 0829-31-5656**Sat., July 23****Saiki Water Festival**さいきみづ
水まつり**TIME:** 11:00am – 8:30pm**PLACE:** *Hatsukaichi City Saiki Sogo Sports Koen* (park), Hatsukaichi City**ACCESS:** From Hatsukaichi Shiyakusho-mae Streetcar Stop or JR Miyauchi Kushido Station (JR Sanyo Line), take a bus bound for Tsuda, and get off at Saiki Chugakko-mae. Walking time to destination: 5 minutes**INQUIRIES:** Executive Committee 0829-72-0690**Sat., July 23****Mizu Matsuri (Water Festival)**み お ちょう みづまつ
水尾町の水祭り**TIME:** 5:00pm – 9:00pm**PLACE:** Around Kumano Gongen Shrine and Mio-no-shoji, Onomichi City**ACCESS:** From JR Onomichi Station (JR Sanyo Line), walking time to destination is 15 minutes.**INQUIRIES:** *Mamoru Kai* (Imagawa Chaho) 0848-37-3766☑ This is a festival handed down from the Edo Period (A.D.1603 – A.D.1868). The festival will be postponed until Sun., July 24 if it rains heavily on the 23rd.

Please feel free to contact the International Exchange Lounge at 082-247-9715.

E-mail: golounge@pcf.city.hiroshima.jp

July 2016

Sat., July 23**Tadanoumi Tenjin Yo-ichi Summer Festival** ただのうみてんじん よいち 忠海天神夜市**TIME:** From 5:30pm onward**PLACE:** In front of JR Tadanoumi Station, Takehara City**ACCESS:** Get off at JR Tadanoumi Station (JR Kure Line).**INQUIRIES:** *Tadanoumi Hohoemi Town Shoten Kai* 0846-26-1325

☑ Traditional local performing arts, kiosks, etc.

Sat., July 23**Innoshima Suigun Fireworks Festival** すいぐんはなびたいかい いんのしま水軍花火大会**TIME:** 8:30pm – 9:00pm**PLACE:** Around Habu Port, Innoshima, Onomichi City**ACCESS:** ① From Innoshima-kita I.C. on the Shimanami Kaido Expressway, drive time to destination is 15 minutes.

② Take an express bus (Flower Liner) from Hiroshima Bus Center (Sogo Hiroshima Department Store, 3F) and get off at the last stop, Habuko-mae.

③ Take a bus bound for Habu Port from JR Onomichi Station (JR Sanyo Line) and get off at the last stop, Habu-ko (a 50 min. bus ride).

INQUIRIES: Executive Committee 0845-26-6212 ◆ On the event day (2pm – 7pm): 0845-22-0032☑ The fireworks will be postponed until Sun., July 24 if it rains heavily on the 23rd.**Sat., July 23****Kurose Fureai Summer Festival** くろせ 黒瀬ふれあい なつ 夏まつり**PLACE:** Around *Kurose Shogai Gakushu Center*, Kurose-cho, Higashi Hiroshima City**ACCESS:** ① From JR Higashi Hiroshima Station (JR Sanyo Line), drive time to destination is 25 minutes.

② Take a bus from JR Saijo Station (JR Sanyo Line) and get off at Naka Kurose. Walking time to destination: 5 minutes

INQUIRIES: Executive Committee 0823-82-3075**Sat., July 23 & Sun., July 24** 🗳 Applications for the competition have already been closed.**Kendama World Cup 2016 Hatsukaichi** だま けん玉ワールドカップ 2016 はつかいち 廿日市**TIME:** ◆ Jul. 23: 11:00am – 5:00pm ◆ Jul. 24: 10:00am – 5:00pm**PLACE:** Hatsukaichi City Sports Center “*Suncherry*”, Hatsukaichi City**ACCESS:** From JR Miyauchi Kushido Station (JR Sanyo Line) or Hatsukaichi Shiyakusho-mae Streetcar Stop (Hiroden Miyajima Line), walking time to destination is 10 minutes.**ADMISSION FEE:** Free**INQUIRIES:** Executive Committee (part of the Hatsukaichi City Tourist Association)0829-31-5656 HP: <http://www.gloken.net/jp/w-cup>**Sat., July 23 & Sun., July 24****Bingo Kokufu Festival** びんごこくふ 備後国府まつり**PLACE:** ◆ Festival: Central area of Fuchu City ◆ Fireworks festival: *Sakuragaoka* Ground**ACCESS:** From JR Fuchu Station (JR Fukuen Line), walking time to destination is 5 minutes.**INQUIRIES:** Executive Committee 0847-45-0678☑ A fireworks show will be held on the 24th.

☑ The festival will be held on July 30 & 31 if it rains heavily on July 23 & 24.



Please feel free to contact the International Exchange Lounge at 082-247-9715.

E-mail: golounge@pcf.city.hiroshima.jp

July 2016

Fri., July 29 – Fri., August 26**~Bura Machi Art~ Takehara Art Festival** ~ぶらまちアート~^{れきし まち ひろしまたけはらげいじゆつさい}歴史・町・広島竹原藝術祭**OPENING CEREMONY:** Jul. 29, from 4:00pm onward at *Fujii Shuzo Sakagura Koryu Kan***PLACE:** Around “*Machi-nami Hozon Chiku*” (the special directory of historical buildings area), Takehara City**ACCESS:** From JR Takehara Station (JR Kure Line), walking time destination is 15 minutes.**ADMISSION FEE:** Some places will require an admission fee.

The Morikawa House-¥300, The Matsuzaka House-¥200,

The Mitsumoto House-¥200, Pass for all three houses-¥600

INQUIRIES: Executive Committee 0846-22-7757

☑ Artworks produced by students of Tokyo University of the Arts will be displayed in the special directory of historical buildings area.

Sat., July 30**Miyoshi Kinsai Festival** ^{みよし まつり}三次きんさい祭**TIME:** 4:00pm – 10:00pm ◆ Parade will start from 5:15pm onward.**PLACE:** Around Miyoshi-machi and Tokaichi Chuo-dori Street, Miyoshi City**ACCESS:** From JR Miyoshi Station (JR Geibi Line), walking time to destination is 10 minutes.**INQUIRIES:** Executive Committee 0824-62-8868**Sat., July 30****Kure Fireworks Festival** ^{くれ なつ まつり}呉の夏まつり ^{かいじょうはなびたいかい}「海上花火大会」**TIME:** 8:00pm – 8:45pm**PLACE:** Around Kure Port, Kure City**ACCESS:** From JR Kure Station (JR Kure Line), walking time to destination is 20 minutes.**INQUIRIES:** *Kure Matsuri Kyokai* 0823-21-0151☑ This will be canceled if it rains heavily on the 30th.**Sat., July 30****Summer Food Festival at Donguri-mura** ^{しょく ろまんきこうなつ じん}どんぐり 食の浪漫紀行夏の陣**TIME:** From 4:00pm onward**PLACE:** *Michi-no-eki* (roadside station), *Toyohira Donguri-mura*, Kita-hiroshima-cho**ACCESS:** ① From Hiroshima-kita I.C. on the Chugoku Expressway, driving time to destination is 20 minutes.② Take a bus bound for Kototani from Hiroshima Bus Center (*Sogo Hiroshima Department Store*, 3F) and get off at Ryuzuyama Tozan-guchi. Walking time to destination: 3 minutes**INQUIRIES:** *Donguri Zaidan* 0826-84-1414☑ A fireworks festival and *bon* dance will also be held.**Sat., July 30****Onomichi Sumiyoshi Fireworks Festival** ^{すみよしはなび}おのみち住吉花火まつり**TIME:** 7:30pm – 9:15pm ◆ Festival at Sumiyoshi Shrine will start from 2:00pm onward.**PLACE:** *Onomichi Suido*, Onomichi City**ACCESS:** From JR Onomichi Station (JR Sanyo Line), walking time to destination is 15 minutes.**INQUIRIES:** *Onomichi Sumiyoshi Kai* 0848-22-2165☑ The fireworks will be postponed until Sun., July 31 or Mon., August 1 if it rains heavily on the 30th.

Please feel free to contact the International Exchange Lounge at 082-247-9715.

E-mail: golounge@pcf.city.hiroshima.jp

July 2016

Sat., July 30 & Sun., July 31**Takehara Sumiyoshi Festival** たけはらすみよし
竹原住吉まつり**TIME:** ◆ Jul. 30: From 5:00pm onward ◆ Jul. 31: Festival – From 8:30am onward
Fireworks display – From 9:50pm onward**PLACE:** Around Sumiyoshi Shrine and Kake-machi Shopping Street, Takehara City**ACCESS:** From JR Takehara Station (JR Kure Line), walking time to destination is 10 minutes.**INQUIRIES:** Executive Committee 0846-22-0298

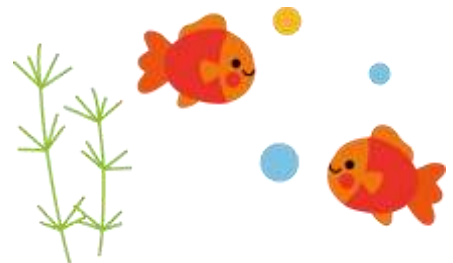
☑ This is a traditional summer festival in Takehara City that has been observed since the Edo period.

Sun., July 31**Summer Festival at Etajima 2016** えたじま
サマーフェスタ江田島2016**TIME:** From 4:00pm onward ◆ Fireworks display: From 8:00pm onward**PLACE:** *Kaijo Jiei-tai, Dai-ichi Jukka Gakko* (Japan Marine Self-Defense Force, First Service School and Officer Candidate School), Etajima City**ACCESS:** Get on a ferry at Hiroshima Port and get off at Koyo Port. It is 5 min. by taxi or bus from there.**INQUIRIES:** *Kanko Shinko Ka*, Etajima City Hall 0823-40-2771**Events Held in Yamaguchi Prefecture****Wed., June 1 – Sat., September 10****Cormorant Fishing in Iwakuni** きんたいきょう
錦帯橋の鵜飼**TIME:** 7:00pm – 9:00pm**PLACE:** Nishiki-gawa River & Kintaikyo Bridge, Iwakuni City**ACCESS:** Get off at JR Iwakuni Station (JR Sanyo Line) and take a bus bound for Kintaikyo Bridge. Get off at Kintaikyo (a 20 min. bus ride).**PASSENGER FARE:** Adults-¥2,000 Children-¥1,000

◇ The fare will be temporarily changed on August 6, the day of the fireworks festival.

RESERVATIONS & INQUIRIES: *Kintaikyo Ukai Office* 0827-28-2877

☑ Originating about 400 years ago, cormorant fishing under lit lanterns is a summer tradition in Iwakuni.

**Sun., July 17****Iwakuni Minato-matsuri Fireworks Festival** いわくにこう
岩国港みなと祭
まつりはなびたいかい
花火大会**TIME:** 8:00pm – 9:00pm**PLACE:** Around *Iwakuni-ko* Port Building, Iwakuni City**ACCESS:** Take a bus bound for Otake from JR Iwakuni Station (JR Sanyo Line) and get off at Shin-minato.**INQUIRIES:** Executive Committee 0827-23-1055☑ The fireworks will be postponed until Mon., July 18 if it rains heavily on the 17th.**Sat., July 30 – Sat., August 13** ◆ Main event will be held on Aug. 13.**Yanai Kingyo Chochin (Goldfish Lantern) Festival** やないきんぎょ
柳井金魚ちょうちん祭り**PLACE:** Around JR Yanai Station (JR Sanyo Line), Yanai City**ACCESS:** Get off at JR Yanai Station (JR Sanyo Line).**INQUIRIES:** *Shoko Kanko Ka*, Yanai City Hall 0820-22-2111

☑ Two thousand goldfish-shaped lanterns will be hung up and there will be retro vendors, creating an Edo Period atmosphere.

☑ Fireworks will go off at the finale (8:45pm – 9:00pm).

Please feel free to contact the International Exchange Lounge at 082-247-9715.

E-mail: golounge@pcf.city.hiroshima.jp

July 2016

Sat., August 6**Nishiki-gawa River Water Festival**にしきがわみず さいてん
錦川水の祭典**TIME:** ♦ Festival 9:00am – 9:30pm
♦ Fireworks Festival 8:00pm – 9:30pm**PLACE:** Around Kintaikyo Bridge, Iwakuni City**ACCESS:** Take a bus bound for Kintaikyo Bridge from JR Iwakuni Station (JR Sanyo Line) and get off at Kintaikyo (a 20 min. bus ride). ✧ Extra buses will run from the station on the event day.**INQUIRIES:** *Iwakuni City Kanko Kyokai* (Tourist Association) 0827-41-2037▣ The fireworks will be postponed until Sat., August 27 if it rains on the 6th.▣ An *Iwakuni taiko* (traditional Japanese drums) performance will also be held in the evening.**Other Event****Setouchi Triennale 2016**せとうちこくさいげいじゅつさい
瀬戸内国際芸術祭2016**PERIOD:** ❶ **Spring:** Sun., March 20 – Sun., April 17❷ **Summer:** Mon., July 18 – Sun., September 4❸ **Autumn:** Sat., October 8 – Sun., November 6**PLACE:** Around the 12 Islands of the Seto Inland Sea (below), Takamatsu and Uno Naoshima

(Teshima, Megijima, Ogijima, Shodoshima, Oshima, Inujima, Shamijima (spring only), Honjima (autumn only), Takamijima (autumn only), Awashima (autumn only), Ibukijima (autumn only), Takamatsu & Uno Port)
--

OFFICIAL URL: <http://setouchi-artfest.jp/en/>

✧ Please see this official homepage for more information such as ticket information and access to each island.

▣ This year is also the triennial international art festival. Please take this opportunity to enjoy art and the small islands of the Seto Inland Sea.

Finished



Please feel free to contact the International Exchange Lounge at 082-247-9715.

E-mail: golounge@pcf.city.hiroshima.jp

July 2016