



*For your cultural life in Hiroshima*

## 月見 *Tsukimi*

*Tsukimi* is a moon viewing on the night of the full moon in mid-autumn, which has been a long tradition in Japan.

It is called "*Jûgoya*", the 15<sup>th</sup> of the eighth month by the old calendar, the traditional day to admire the full moon and make offerings to it. In Autumn, the air is clear and the moon looks especially beautiful, so one point of it is to enjoy gazing at that bright moon. It's also a kind of harvest festival, so the Japanese offer the fruits of the harvest to the moon. We generally offer seasonal fruits and vegetables, together with pampas grass and rice-dumplings (*tsukimi dango*), to the full moon.

Moon-viewing usually takes place twice, on the 15<sup>th</sup> of the eighth month (around September 20<sup>th</sup> on the modern calendar), and on the 13<sup>th</sup> of the ninth month (*Jûsanya*) (around October 15<sup>th</sup>). Moon-viewing parties (*kangetsu kai*) are held at temples and other places all around the country. (Abstracted from The Japanese-English Dictionary for Conversation about Japan, pp. 453-455, Obunsha)

September 15<sup>th</sup> is the *Jûgoya* day this year. *Kangetsu* (moon-viewing) Tea Ceremony will be held at Shukkeien Garden (please see "Seasonal Event Information" section, for more information). Please enjoy to viewing the beautiful full moon with Japanese green tea on an Autumn night.

September 2016





# September 2016

- ✧ ***Community Connections***
- ✧ ***City Office Notices***
- ✧ ***Hiroshima Peace Culture Foundation News***
- ✧ ***Movie Theaters***
- ✧ ***Bilingual TV Programs***
- ✧ ***Concerts & Plays***
- ✧ ***Museums***
- ✧ ***Sports***
  - ***Hiroshima Toyo Carp Schedule 2016***
  - ***Sanfrecce Hiroshima FC Game Schedule 2016***
  - ***Hiroshima Dragonflies 2016 – 2017 B2 League***
- ✧ ***Events***
  - ***Seasonal Event Information***
  - ***Municipal Facilities***
- ✧ ***Lounge & Library***
  - ***Library News***
  - ***Trio-phone Service***  
(multilingual interpretation over the telephone)
  - ***Assisting with International Cooperation***
  - ***Garbage Disposal***
- ✧ ***Japanese Language Classes in Hiroshima City***

***Hiroshima Peace Culture Foundation***

***International Exchange Lounge***

1-5 Nakajima-cho, Naka-ku, Hiroshima 730-0811

E-mail: [golounge@pcf.city.hiroshima.jp](mailto:golounge@pcf.city.hiroshima.jp)

Tel. 082-247-9715 Fax. 082-242-7452

✧ Visit the HIRO CLUB NEWS WEBSITE for information online. ✧

URL: <http://www.pcf.city.hiroshima.jp/ircd/ioho/hiroclub%2001.html>







## Public Library Events

By KARLEE KEYSER August 2016

This is the last time I'll be writing *Community Connections*, but I hope everyone will enjoy reading about insights from Benjamin S. from the November issue onward! ☺ For my last post, I would like to introduce public libraries as a place not only to visit for books, but also for events.

In early June at the International Exchange Lounge in Peace Memorial Park, I helped host a reading of a picture book in English. It was while researching ways to conduct this event that I stumbled upon the wonderful programming of different libraries in the area. Until then, I had foolishly thought libraries were mostly for studying or borrowing books! How can you find out about library events? Well, there's a handy website for that! ☺

To access information on libraries in Hiroshima City, check out this website: <<http://www.library.city.hiroshima.jp/>>. If you choose the English option at the top of the page, you can learn about library cards and hours, library locations and contact information, and about searching for library books. Scroll halfway down the Japanese homepage to find the following options:

お知らせ	イベント	企画展	月間予定	採用情報
(Notices)	(Events)	(Exhibits)	(Monthly Schedules)	(Employment)

Click on イベント to see a list of recent past events. To see future events, click on 月間予定 and choose the schedule of your preferred library. The majority of library events are targeted toward children and their guardians. There are also some really interesting ones for adults as well, such as below.

行事名 Event Name	大人のためのストーリーテリング (Storytelling for Adults)	
日時 Date & Time	6月3日 (金) 10:00~12:00 (June 3 (Friday), 10 AM - noon)	
場所 Location	〇〇文化センター (X X Cultural Center)	
講師 Organizer	〇〇の会 (X X Group)	
対象 Age Group(s)	ストーリーテリングに興味のある大人の方 (Anyone with an interest)	
内容 Details	語り手がお話を覚えて語り聞かせるストーリーテリング。ことばだけを聞いて、想像力をふくらませる世界を楽しんでみませんか。	
定員 Capacity	60人 (要申込) (60 People (Registration Required))	
申込 Registration	〇〇図書館へ来館か電話で申込 (Call or visit X X Library to register)	

By looking up library information online like this, it is much easier to use web tools to search difficult kanji and to find those events that really interest you. As far as I can tell, the only downside to the library website I listed above is that it does *not* include information about the International Exchange Lounge. That means that to search the lounge's wealth of books and magazines in foreign languages (English, Spanish, Chinese, Korean, and more), you'll need to do so at the following website: <<http://www.lib-finder.net/pcf/servlet/Index>>. To learn about events at the lounge, such as study groups, club activities, and book readings, please call or visit. Happy reading and socializing! ☺



# City Office Notices

City Office Notices contains selected information from the Hiroshima City Newsletter, *ひろしま市民と市政 Hiroshima Shimin to Shisei*. City Office Notices is published twice a month and available in print at the International Exchange Lounge, and online at our website: <http://www.pcf.city.hiroshima.jp/ircd/joho/hiroclub%2001.html>

September 1, 2016

## Topics

- ✿ Volgograd Day
- ✿ Business Start-up Seminar for Women
- ✿ *Nogaku* Festival
- ✿ Temporary Closures
- ✿ Regulations on Outdoor Advertising Signs to Protect the Cityscape and the Public Safety

## Volgograd Day Hiroshima Sister City and Friendship City Event (No admission fee, no reservation required)

姉妹・友好都市の催し「ボルゴグラードの日」(P5)

**DATE & TIME:** Sunday, September 11, 1:00 pm – 3:30 pm

**PLACE:** Ryugakusei Kaikan (International House) (1-1 Nishi-kojin-machi, Minami-ku, Hiroshima City)

**PROGRAMS:** Exhibition on Volgograd and Russia, Russian food tasting, Russian music concert

Check the flyer below for more information (Japanese) [PDF, 344KB, 2 pages]:

[http://www.pcf.city.hiroshima.jp/ircd/info/oshirase-naiyou%20274\(volgograd%202016\)tirasi.pdf](http://www.pcf.city.hiroshima.jp/ircd/info/oshirase-naiyou%20274(volgograd%202016)tirasi.pdf)

**INQUIRIES:** International Relations and Cooperation Division,  
Hiroshima Peace Culture Foundation Tel. 242-8879

## Business Start-up Seminar for Women (in Japanese)

女性のための創業セミナー(P5)

In this seminar, attendees will learn basic knowledge about starting a small business and tips for balancing business and family.

**DATE & TIME:** Friday, September 16 and Friday, December 16 1:00pm – 4:00pm

**PLACE:** Yui Port (5-6-9 Otemachi, Naka-ku)

**TO APPLY:** Send a prescribed application form to Yui Port ゆいぽーと (Address : 5-6-9 Otemachi, Naka-ku)

by Thursday, September 15. Application forms are available at DanjoKyodoSankakuka Yui Port, 男女共同参画 課 (Gender Equality Division) or online at the website ([http://www.yui-port.city.hiroshima.jp/index.php?page\\_id=197](http://www.yui-port.city.hiroshima.jp/index.php?page_id=197)) The first 30 applicants will be accepted. Child-care service (for preschool children aged 6 months or older) is available during the seminar. Prior reservation by Friday, September 9 is required. The first 10 children will be accepted.

**INQUIRIES:** Yui Port Tel. 248-3320 Fax. 248-4476 (Closed on September 22 and Mondays)

Edited and published by the Hiroshima Peace Culture Foundation  
International Affairs Department, International Relations and Cooperation Division  
Tel: (082) 242-8879, Fax: (082) 242-7452, E-mail: [internat@pcf.city.hiroshima.jp](mailto:internat@pcf.city.hiroshima.jp)  
International Exchange Lounge  
Tel: (082) 247-9715, E-mail: [golounge@pcf.city.hiroshima.jp](mailto:golounge@pcf.city.hiroshima.jp)  
Website: <http://www.pcf.city.hiroshima.jp/ircd/english/index.html>  
編集・発行 公益財団法人広島平和文化センター国際部国際交流・協力課



## 能楽 **Nogaku Festival** (Prior application required, no admission fee)

ひろしま平和能楽祭(P5)

Nogaku is a Japanese traditional dance performance.

**DATE & TIME:** Saturday, November 19, 1:00 pm – 4:30 pm

**PLACE:** JMS Aster Plaza (4-17 Kako-machi, Naka-ku)

**TO APPLY:** Send an ofuku-hagaki (return postcard) to <sup>Hiro Shin BunkaZaidan</sup> ひろしん文化財団 (Address: 3-15 Fujimi-cho, Naka-ku 7308707) by Friday, September 30. 550 applicants will be selected at random. Please write

your name, address, telephone number, age, the event name “<sup>Hiroshima HeiwaNogakuSai</sup>ひろしま平和能楽祭” and “<sup>Nyujō</sup>入場

<sup>Seiriken Kibo</sup>整理券希望” on your postcard.

**INQUIRIES:** *Hiro Shin Bunka Zaidan* Tel. 245-0512 Fax. 241-0531

Check the flyer below for more information (Japanese) [PDF, 896KB, 2 pages]:

<http://www.hiroshin.co.jp/info/2016/pdf/160801.pdf>

## Temporary Closures

臨時休館(P8)

### **Koiki Koen Tennis Court**

**CLOSED:** Thursday, September 1

### **Shinonome Indoor Swimming Pool**

**CLOSED:** From Thursday, September 1 to Wednesday, September 21

### **Asaminami-ku Sports Center Swimming Pool**

**CLOSED:** From Monday, September 5 to Thursday, September 8

### **Nishi-ku Sports Center Swimming Pool**

**CLOSED:** From Tuesday, September 6 to Thursday, September 8

### **Saeki-ku Sports Center Swimming Pool**

**CLOSED:** From Wednesday, September 14 to Friday, September 16

**INQUIRIES:** Sports *Kyokai* (Sports Association) Tel. 243-0578 Fax. 249-3641

## Regulations on Outdoor Advertising Signs to Protect the Cityscape and the Public Safety

看板など屋外広告物は周辺の景観や安全に配慮を(『市民と市政』2016.8.15号P2)

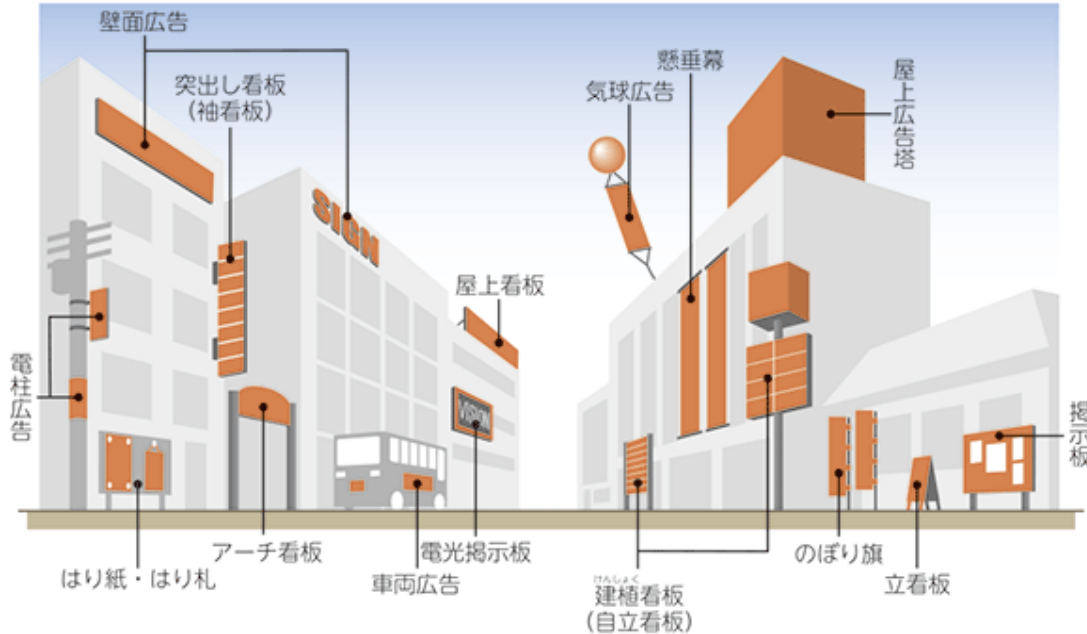
We are surrounded by a large number of outdoor advertising signs. These signs could impair the cityscape if they are not regulated. They could also be dangerous for public safety without proper maintenance. There are regulations set to maintain public safety and to ensure there is no visual impact on the surrounding area.

Advertising signs including billboards and posters, which are displayed outdoor in public regularly or for a certain period of time, and signs displayed on walls, fences or chimneys, which are not built for

Edited and published by the Hiroshima Peace Culture Foundation  
International Affairs Department, International Relations and Cooperation Division  
Tel: (082) 242-8879, Fax: (082) 242-7452, E-mail: [internat@pcf.city.hiroshima.jp](mailto:internat@pcf.city.hiroshima.jp)  
International Exchange Lounge  
Tel: (082) 247-9715, E-mail: [golounge@pcf.city.hiroshima.jp](mailto:golounge@pcf.city.hiroshima.jp)  
Website: <http://www.pcf.city.hiroshima.jp/ircd/english/index.html>  
編集・発行 公益財団法人広島平和文化センター国際部国際交流・協力課



advertising purposes, are all regulated by laws such as the Outdoor Advertisement Act (屋外<sup>Okugai</sup> 広告物法<sup>Kokokubutsu Ho</sup>), the Regulation for Outdoor Advertisement (屋外<sup>Okugai</sup> 広告物<sup>Kokokubutsu</sup> 条例<sup>Jorei</sup>), the Road Traffic Act (道路交通法<sup>Doro Kotsu Ho</sup>), the Road Act (道路法<sup>Doro Ho</sup>) and the Road Occupancy By-Law (道路占用規則<sup>Doro Senyo Kisoku</sup>). All kinds of signs indicated in the picture below must comply with the above mentioned laws.



## Outdoor Advertising Signs Must Meet the Standard Requirements. Confirm at Your Local Ward Offices.

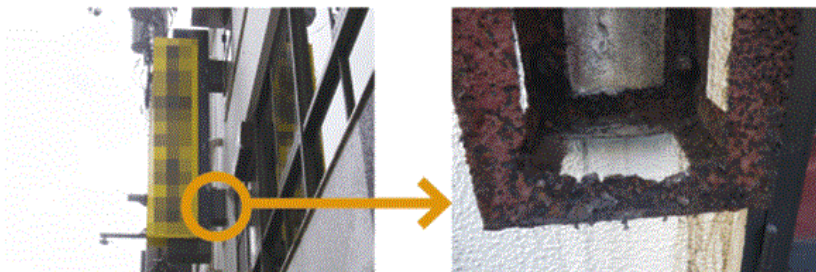
屋外広告物を設置するときは区役所に相談を

A construction permit is required to display outdoor advertising signs except for the limited illustrated accessory signs of shops or offices. Inquire at your local ward office for the permit.

## Regular Maintenance is Important to Ensure the Safety

定期的に点検し安全に管理を

A pedestrian was seriously injured after she was crushed by a falling advertising sign from a commercial building in Sapporo, Hokkaido, in February 2015. After this accident, more attention has been paid to the safety of outdoor advertising signs. Outdoor signs possibly have cracked, deteriorated parts, or loose bolts as a result of rains and winds even if these are visually not damaged as shown in the following picture.



Owners are required to check regularly, clean and repair to maintain their outdoor signs in a clean and

Edited and published by the Hiroshima Peace Culture Foundation  
International Affairs Department, International Relations and Cooperation Division  
Tel: (082) 242-8879, Fax: (082) 242-7452, E-mail: [internat@pcf.city.hiroshima.jp](mailto:internat@pcf.city.hiroshima.jp)  
International Exchange Lounge  
Tel: (082) 247-9715, E-mail: [golounge@pcf.city.hiroshima.jp](mailto:golounge@pcf.city.hiroshima.jp)  
Website: <http://www.pcf.city.hiroshima.jp/ircd/english/index.html>  
編集・発行 公益財団法人広島平和文化センター国際部国際交流・協力課



safe condition. An expert's safety inspection is also necessary to check the structural safety of signs. In case any abnormality is found, the sign should be repaired or removed immediately to ensure safety.

Help everyone involved in advertising signs to contribute to protect the attractive cityscape and the nature-rich environment and to ensure public safety.

**INEQUIRIES:** *Toshi Keikaku Ka* (City Planning Division) Tel. 504-2277 Fax. 504-2512  
Or *Ijikanri ka* (Maintenance Division) of your local ward office

Ward	Telephone	Fax	Ward	Telephone	Fax
Naka	504-2576	541-3835	Asaminami	831-4948	877-2299
Higashi	568-7739	262-6986	Asakita	819-3925	815-3906
Minami	250-8956	252-7179	Aki	821-4921	822-8069
Nishi	532-0946	232-9783	Saeki	943-9752	923-5098



# Hiroshima Peace Culture Foundation News

❖ Event schedules are subject to change. Please contact event organizers to confirm listed information.

September 2016

## Volgograd Day Hiroshima Sister City and Friendship City Event (No admission fee, no reservation required)

Organized by the 2016 Volgograd Day Event Executive Committee

With Support from the Consular Department of the Ministry of Foreign Affairs of the Russian Federation

**DATE & TIME:** Sunday, September 11, 1:00 pm – 3:30 pm

**PLACE:** Ryugakusei Kaikan (International House) (1-1 Nishi-kojin-machi, Minami-ku, Hiroshima City)

- \* Exhibition on Volgograd and Russia
- \* Free Russian Food Tasting (for first 250 guests)
- \* Stage Events: Opening Ceremony  
Russian Music Concert



☺ Check the flyer below for more information (Japanese) [PDF, 344KB, 2 pages]:

[http://www.pcf.city.hiroshima.jp/ircd/info/oshirase-naiyou%20274\(volgograd%202016\)tirasi.pdf](http://www.pcf.city.hiroshima.jp/ircd/info/oshirase-naiyou%20274(volgograd%202016)tirasi.pdf)

**INQUIRIES:** International Relations and Cooperation Division,  
Hiroshima Peace Culture Foundation Tel. 242-8879

## CIR Question & Answer Day

Are you looking for advice about Hiroshima?

Come in for a chat with our new C.I.R., Benjamin Swallow!

**DATE & TIME:** Wednesday, September 28, 1:00 pm – 3:30 pm

**PLACE:** *Hiroshima Kokusai Kaigijo* (International Conference Center Hiroshima) 1F  
(located in Peace Memorial Park)

**RESERVATIONS ARE REQUIRED:** Reservations can be made in person or by telephone at the  
Hiroshima Kokusai Kaigijyo, Kokusai Kouryu Lounge  
TEL: 082-247-9715 (Lounge open hours 9:00 am – 7:00 pm)

☺ Check the flyer below for more information [PDF, 112KB, 1 page]:

<http://www.pcf.city.hiroshima.jp/ircd/english/lounge/Advice%20about%20hiroshima%20by%20Benjamin.pdf>

## The East Building is closed until February 2017.

Due to the renovation works, the exhibition rooms of the Peace Memorial Museum East Building are closed until February 2017. Currently, the Main Building is open to visitors. We apologize for any inconvenience that this may cause and ask for your understanding and cooperation in this matter.

Edited and published by the Hiroshima Peace Culture Foundation  
International Affairs Department, International Relations and Cooperation Division  
Tel: (082) 242-8879, Fax: (082) 242-7452, E-mail: [internat@pcf.city.hiroshima.jp](mailto:internat@pcf.city.hiroshima.jp)  
International Exchange Lounge  
Tel: (082) 247-9715, E-mail: [golounge@pcf.city.hiroshima.jp](mailto:golounge@pcf.city.hiroshima.jp)  
Website: <http://www.pcf.city.hiroshima.jp/ircd/english/index.html>  
編集・発行 公益財団法人広島平和文化センター国際部国際交流・協力課



The location of the entrance remains in the East Building. The summary panels of the closed East Building are displayed in the gallery of the Main Building.

Information on other museum facilities is as follows.

- Coin-Lockers: Available
- Audio Guide: Available for the Main Building.
- Museum Shop: A temporary museum shop is set up on the 1<sup>st</sup> floor of the East Building.
- Library: Operating under regular hours
- Rest Space / Café: Operating under regular hours

**INQUIRIES:** Curatorial Division, Hiroshima Peace Memorial Museum Tel. 241-4004

## Come and Listen to a Talk by an A-bomb Legacy Successor

As the A-bomb survivors age, the City of Hiroshima has started a three-year training program for official A-bomb Legacy Successors to ensure that the A-bomb survivors' experiences and desires for peace are faithfully inherited and shared with as many people as possible. A talk by successors is now open to the public without charge, in English or Japanese. (Note: Talks are NOT delivered by A-bomb survivors.)

**SCHEDULE:** 11:00am - noon (Japanese)

12:30pm - 1:30pm (Japanese)

2:00pm - 3:00pm (English)

(Talks are unavailable on days when the Hiroshima Peace Memorial Museum is closed)

**VENUE:** Video Theater, 1st Floor, East Building of the Hiroshima Peace Memorial Museum

**TALK CONTENT:**

- An A-bomb survivor's experience and his/her desire for peace.
- Realities of the A-bombing (wartime life in Japan, outline of the A-bomb damage, A-bomb's impact on human bodies, etc.)
- Successor's desire for peace

**INQUIRIES:** Outreach Division, Hiroshima Peace Memorial Museum  
Tel. 242-7828 E-mail: [keihatsu@pcf.city.hiroshima.jp](mailto:keihatsu@pcf.city.hiroshima.jp)

## Special Exhibition: "Memoirs of the Atomic Bombing: The Earliest Accounts of the Hiroshima A-bomb"

**PERIOD:** Friday, January 1 – Wednesday, December 28, 2016

**PLACE:** Hiroshima National Peace Memorial Hall for the Atomic Bomb Victims, B1

**ADMISSION:** Free

**INQUIRIES:** Hiroshima National Peace Memorial Hall for the Atomic Bomb Victims  
Tel. 543-6271 Fax. 543-6273



# Movie Theaters

## September 2016



Here is a general list of movies being shown in theaters around Hiroshima. Due to unpredictable changes in scheduling, listings are subject to change without notice. Foreign films are usually in their original language with Japanese subtitles. When not specified, the admission is **¥1,800** for adults. Theaters offer various kinds of admission discount services, so please inquire at each theater for more information.

### SALON CINEMA

[Hiroshima Toei Plaza Bldg. 8F, 16-10 Hatchobori,  
Naka-ku / Tel: 082-962-7772 /  
URL: <http://www.johakyu.co.jp/>]

- Until Sept. 9 **Little Boy** / '16 Mexico, USA
- Until Sept. 9 **Boomerang** / '15 France
- Until Sept. 16 **Sing Street** / '15 Ireland, UK,  
USA
- Until Sept. 23 **Er Ist Wieder Da / Look Who's  
Back** / '15 Germany
- Sept. 3 – 16 **Je Vous Souhaite D'Etre  
Follement Aimee / Looking for  
Her** / '15 France
- Sept. 3 – 23 **While We're Young** / '14 USA
- Sept. 10 – 23 **La Tete Haute / Standing Tall**  
/ '15 France
- Sept. 10 – 23 **High-Rise** / '16 UK
- Sept. 17 – 30 **Race** / '16 USA, Germany,  
Canada
- From Sept. 24 **Janis: Little Girl Blue** / '15 USA
- From Sept. 24 **11 Minut / 11 Minutes** / '15  
Poland, Ireland
- From Sept. 24 **Asphalte / Macadam Stories**  
/ '15 France

### CINE TWIN

[Apex2 BF, 2-22 Hondori, Naka-ku / Tel : 082-241-7711 /  
URL: <http://www.johakyu.co.jp/>]

- Until Sept. 9 **Firenze e gli Uffizi / Florence  
and the Uffizi Gallery** / '15 Italy
- Until Sept. 9 **Paco de Lucia: La Busqueda /  
Paco de Lucia: a Journey** /  
'14 Spain
- Sept. 10 – 16 **Nuovo Cinema Paradiso** /  
'89 Italy, France
- Sept. 10 – 16 **The Man Who Fall to Earth** /  
'76 UK
- Sept. 17 – 23 **La Strada** / '54 Italy
- Sept. 17 – 23 **Trainspotting** / '96 UK
- Sept. 24 – 30 **Les Aventuriers / The Last  
Adventure** / '67 France
- Sept. 24 – 30 **Mauvais Sang / Bad Blood** /  
'86 France

### Eric Rohmer Films

- Sept. 3, 5, 7 & 9 **Pauline a la Plage /  
Pauline at the Beach** / '83  
France
- Sept. 3 & 6 **Les Nuit de la Pleine Lune  
/ Full Moon in Paris** / '84  
France
- Sept. 4, 6, 8 & 9 **Le Rayon Vert / Summer** /  
'85 France
- Sept. 4 & 7 **L'Ami de Mon Amie /  
Boyfriends and Girlfriends**  
/ '87 France
- Sept. 5 & 8 **Quatre Aventures de  
Reinette et Mirabelle** / '86  
France

### HATCHOZA

[Fukuya Department Store Hatchobori 8F,  
6-26 Ebisu-cho, Naka-ku / Tel: 082-546-1158 /  
URL: <http://www.johakyu.co.jp/>]

- Until Sept. 9 **Truth** / '15 Australia, USA
- Sept. 3 – 9 **Il Gattopardo / The Leopard**  
/ '63 Italy, France
- Sept. 3 – 9 **Ben-Hur** / '59 USA
- Sept. 17 – 23 **Shane** / '53 USA
- From Sept. 24 **My Love, Don't Cross That  
River** / '14 Korea
- From Sept. 24 **Jag ar Ingrid / Ingrid Bergman  
in Her Own Words** / '15 Sweden

### YOKOGAWA CINEMA Tel : 231-1001

[3-1-12 Yokogawa-cho, Nishi-ku / Tel: 082-231-1001 /  
URL: <http://yokogawa-cine.jugem.jp/>]

- Sept. 15 – 21 **Mr. Dynamite: The Rise of  
James Brown** / '14 USA

### AEON CINEMA HIROSHIMA

[Hiroshima Danbara Shopping Center 6F, 1-3-52  
Danbara-minami, Minami-ku / Tel : 082-261-3770 / URL:  
<http://www.aeoncinema.com/cinema/hiroshima/>]

- From Aug. 11 **X-Men: Apocalypse** /  
'16 USA
- Sept. 3 – 9 **Unfriended** / '15 USA
- From Sept. 9 **Gods of Egypt** / '16 USA

Please feel free to contact the International Exchange Lounge at 082-247-9715.

E-mail: [golounge@pcf.city.hiroshima.jp](mailto:golounge@pcf.city.hiroshima.jp)

September 2016



From Sept. 10 **Suicide Squad** / '16 USA  
 From Sept. 17 **The BFG** / '16 USA  
 From Sept. 24 **Sully** / '16 USA  
 From Oct. 15 **Self/Less** / '15 USA  
 From Oct. 28 **Inferno** / '16 USA

**109 CINEMAS**

[Alpark 3F (north bldg.), 4-7-1 Kusatsu-minami, Nishi-ku  
 / Tel: 05700-002-109 /

URL: <http://www.109cinemas.net/Hiroshima>]

From Jul. 30 **The Legend of Tarzan** / '16 USA  
 From Aug. 11 **X-Men: Apocalypse** / '16 USA  
 From Aug. 19 **Ghostbusters** / '16 USA  
 From Aug. 26 **Teenage Mutant Ninja Turtles: Out of the Shadows** / '16 USA  
 From Sept. 9 **Gods of Egypt** / '16 USA  
 From Sept. 10 **Suicide Squad** / '16 USA  
 From Sept. 17 **The BFG** / '16 USA  
 From Sept. 24 **Sully** / '16 USA

**TOHO CINEMAS MIDORII**

[Fuji Grand 3F, 1-5-2 Midorii, Asaminami-ku / Tel : 082-831-8060 / URL: <http://www.tohotheater.jp/>]

Adults-¥1,800, University students-¥1,500, From preschoolers (3 years old and under) to- High school students-¥1,000,

From Aug. 11 **X-Men: Apocalypse** / '16 USA  
 From Aug. 19 **Ghostbusters** / '16 USA  
 From Aug. 26 **Teenage Mutant Ninja Turtles: Out of the Shadows** / '16 USA  
 From Sept. 1 **Now You See Me 2** / '16 USA  
 From Sept. 9 **Gods of Egypt** / '16 USA  
 From Sept. 10 **Suicide Squad** / '16 USA  
 From Sept. 17 **The BFG** / '16 USA  
 From Sept. 22 **The Beatles: Eight Days a Week – The Touring Years** / '16 UK  
 From Sept. 24 **Sully** / '16 USA

**HIROSHIMA WALD 11**

[AEON Mall Hiroshima Fuchu 4F, 2-1-1 Osu, Fuchu-cho, Aki-gun / Tel : 082-561-0600 /

URL: <http://wald11.com/index.html>]

From Aug. 11 **The Jungle Book** / '16 USA  
 From Aug. 11 **X-Men: Apocalypse** / '16 USA  
 From Aug. 19 **Ghostbusters** / '16 USA  
 From Aug. 26 **Teenage Mutant Ninja Turtles: Out of the Shadows** / '16 USA  
 From Aug. 27 **Lights Out** / '16 USA  
 From Sept. 1 **Now You See Me 2** / '16 USA  
 From Sept. 9 **Gods of Egypt** / '16 USA  
 From Sept. 10 **Suicide Squad** / '16 USA  
 From Sept. 17 **The BFG** / '16 USA

From Sept. 24 **Mechanic: Resurrection** / '16 USA  
 From Sept. 24 **Sully** / '16 USA  
 From Oct. 1 **Me Before You** / '16 USA  
 From Oct. 7 **Jason Bourne** / '16 USA  
 From Oct. 21 **Star Trek Beyond** / '16 USA  
 From Oct. 28 **Inferno** / '16 USA

**Movie Showings at 10am in the Morning**

Aug. 27 – Sept. 9 **The Getaway** / '72 USA  
 Sept. 10 – 23 **Ikiru** / '52 Japan  
 Sept. 24 – Oct. 7 **Dead Poets Society** / '89 USA  
 Oct. 8 – 21 **Shichinin no Samurai** / '54 Japan  
 Oct. 22 – Nov. 4 **Il Buono, Il Brutto, Il Cattivo** / '66 Italy  
 Nov. 5 – 18 **The Pianist** / '02 France, Germany, Poland, UK  
 Nov. 19 – Dec. 2 **Les Amants de Montparnasse** / '58 France  
 Dec. 3 – 16 **Suna no Utsuwa** / '74 Japan  
 Dec. 17 – 30 **Vertigo** / '58 USA  
 Dec. 31 – Jan. 13 **我的父親母親 / The Road Home** / '99 USA, China  
 Jan. 14 – 27 **那人 那人 那狗 / Postmen in the Mountains** / '99 China  
 Jan. 18 – Feb. 10 **To Kill a Mockingbird** / '62 USA

**T-JOY HIGASHI HIROSHIMA**

[Fuji Grand Higashi Hiroshima 3F, 4405 Misonou, Saijo-cho, Higashi Hiroshima-shi / Tel : 082-493-6779 / URL: <http://www.t-joy.net/site/hiroshima/index/html>]

From Jul. 30 **The Legend of Tarzan** / '16 USA  
 From Aug. 11 **X-Men: Apocalypse** / '16 USA  
 From Sept. 1 **Now You See Me 2** / '16 USA  
 From Sept. 10 **Suicide Squad** / '16 USA  
 From Sept. 17 **The BFG** / '16 USA  
 From Sept. 24 **Sully** / '16 USA  
 From Oct. 7 **Jason Bourne** / '16 USA  
 From Oct. 21 **Star Trek Beyond** / '16 USA  
 From Oct. 28 **Inferno** / '16 USA



Please feel free to contact the International Exchange Lounge at 082-247-9715.

E-mail: [golounge@pcf.city.hiroshima.jp](mailto:golounge@pcf.city.hiroshima.jp)

September 2016



# Bilingual TV Programs



September 2016

#1: NHK Sogo	#4: Hiroshima TV
#2: NHK E Tele	#5: Home TV
#3: RCC	#8: TSS

◆ Some changes may occur because of special programming.

## NEWS

### Monday - Sunday

NHK News 7 / 7:00pm – 7:30pm (#1)

### Monday - Friday

News Watch 9 / 9:00pm – 10:00pm (#1)

## REGULAR PROGRAMS

### Wednesday

The Little Paris Kitchen: Cooking with Rachel Khoo ('12 UK) / 11:00pm – 11:30pm (#2)

◆ Until the 7<sup>th</sup>

### Thursday

TED / 11:00pm – 11:25pm (#2)

◆ Rerun: Mon., 12:45am – 1:10am

### Friday

Japanese Lesson / 1:35pm – 1:50pm (#2)

Through the Wormhole / 10:00pm – 10:45pm (#2) ◆ Except the 30<sup>th</sup>

### Saturday

Dramatic Earth (Documentary Program) /

7:00pm – 7:45pm (#2)

◆ Rerun: Mon., midnight – 12:45am

## DRAMAS

### Monday

不良笑花 / Miss No Good ('09 Taiwan) /

1:30am-2:25am (#4) ◆ the 19<sup>th</sup>: 2:00am-2:55am

### Wednesday

K. C. Undercover ('15 USA) / 7:25pm – 7:50pm (#2)

### Saturday

The Thundermans ('13 USA) / 6:25pm – 6:50pm (#2)

### Sunday

The Musketeers ('14 UK) / 11:00pm – midnight (#1) ◆ Until the 11<sup>th</sup>

War & Peace ('15 UK) / 11:00pm – 11:50pm (#1)

◆ From the 25<sup>th</sup>

## ANIMATIONS

### Tuesday

Sarah & Duck / 5:20pm – 5:25pm (#2)

### Friday

Sushi Town / 3:55pm – 4:00pm (#2)

## Saturday

Curious George / 8:35am – 9:00am (#2)

Thunderbirds Are Go / 5:05pm – 5:30pm (#1)

◆ Except the 17<sup>th</sup> & the 24<sup>th</sup>

SpongeBob SquarePants / 6:00pm – 6:25pm (#2)

## Sunday

Thomas & Friends / 5:30pm – 5:50pm (#2)

## ◆ Special Foreign Animation Program ◆

22<sup>nd</sup> Disney Short Film Collection / 9:25am-9:50am (#2)

## MOVIES

2<sup>nd</sup> Edge of Tomorrow / '04 USA / 9:00pm-10:54pm (#4)

3<sup>rd</sup> Spider-Man 3 / '07 USA / 12:45am-2:45am (#3)

4<sup>th</sup> Rogue / '07 USA, Australia / 1:53am-3:45am (#3)

10<sup>th</sup> The Marine / '06 USA / 12:45am-2:45am (#3)

11<sup>th</sup> War / '07 USA / 1:50am-3:45am (#8)

11<sup>th</sup> Wolf Warrior / 戰狼 / '14 China / 1:53am-3:45am (#3)

17<sup>th</sup> Next / '07 USA / 12:45am-2:45am (#3)

18<sup>th</sup> The Final Destination / '09 USA / 1:53am-3:45am (#3)

24<sup>th</sup> What Doesn't Kill You / '08 USA / 12:45am-2:42am (#3)

25<sup>th</sup> Half Past Dead / '02 USA / 1:50am-3:35am (#8)

25<sup>th</sup> The Vanishing / '93 USA / 1:53am-3:45am (#3)

Sept. 1 Once Upon a Time in Mexico / '03 Mexico, USA / 12:45am-2:42am (#3)

## SPORTS

### Football

■ 2018 FIFA World Cup Russia: Asian Qualifiers – Road to Russia (#5) ◆ Broadcasted in Japanese only

1<sup>st</sup> Japan x UAE / 7:00pm-9:35pm

6<sup>th</sup> Japan x Thailand / 9:00pm-11:15pm

### Boxing

4<sup>th</sup> WBO Super Flyweight Match: Naoya Inoue (JP) x Petchbarngborn Kokietgym (TH) / 7:00pm-8:54pm (#8) ◆ Broadcasted in Japanese only

16<sup>th</sup> WBC Bantamweight Match: Shinsuke Yamanaka (JP) x Anselmo Moreno (PA) / 7:56pm-8:54pm (#4) ◆ Broadcasted in Japanese only

Please feel free to contact to the International Exchange Lounge at 082-247-9715.

E-Mail: [golounge@pcf.city.hiroshima.jp](mailto:golounge@pcf.city.hiroshima.jp)

September 2016



## ■ Sumo

### ■ 2016 September Grand Sumo Tournament

(#1) September 11 – 25

11 <sup>th</sup>	3:05pm – 6:00pm
12 <sup>th</sup> – 16 <sup>th</sup>	3:10pm-6:00pm
17 <sup>th</sup> – 19 <sup>th</sup>	3:05pm – 6:00pm
20 <sup>th</sup> & 21 <sup>st</sup>	3:10pm – 6:00pm
22 <sup>nd</sup>	3:05pm – 6:00pm
23 <sup>rd</sup>	3:10pm – 6:00pm
24 <sup>th</sup> & 25 <sup>th</sup>	3:05pm – 6:00pm

## ■ Other Sports

25<sup>th</sup> **RIZIN Fighting World Grand-Prix 2016 /**  
7:00pm-9:54pm (#8) ✧ Broadcasted in  
Japanese only

## ■ Rio 2016 Palalympic Games

September 7 – 18

✧ Broadcasted in Japanese only

✧ Official Website: <http://www.rio2016.com/en>

- 8<sup>th</sup> ■ **Opening Ceremony / 7:00am-8:15am**  
(#2)  
■ **Opening Ceremony / 8:15am-9:30am**  
(#1)
- 9<sup>th</sup> ■ **Men's Wheelchair Basketball: Japan x**  
**Turkey / 3:30am-5:30am (#1)**  
■ **Women's Goalball: Japan x Israel /**  
**1:05pm-3:00pm (#1)**
- 10<sup>th</sup> ■ **Men's Wheelchair Basketball: Japan x**  
**Spain / 3:30am-5:30am (#1)**  
■ **Women's Goalball: Japan x Brazil /**  
**1:50pm-3:00pm (#1)**
- 11<sup>th</sup> ■ **Judo; Swimming; Athletics; Cycling**  
**Track / 4:00am-5:30am (#1)**  
■ **Swimming; Athletics; Cycling Track /**  
**7:45am-9:00am (#1)**  
■ **Men's Wheelchair Basketball: Japan x**  
**Netherlands / 10:00am-11:00am (#1)**  
■ **Swimming; Judo / 1:05pm-3:00pm (#1)**
- 12<sup>th</sup> ■ **Cycling Tack; Women's Goalball;**  
**Swimming; Athletics / 4:00am-5:30am**  
**(#1)**  
■ **Swimming; Athletics; Men's Wheelchair**  
**Basketball: Japan x Canada / 8:15am-**  
**11:00am (#1)**  
■ **Wheelchair Tennis; Swimming / 1:05pm-**  
**3:00pm (#1)**
- 13<sup>th</sup> ■ **Men's Wheelchair Basketball: Japan x**  
**Australia / 1:15am-3:30am (#1)**  
■ **Wheelchair Tennis; Women's Goalball:**  
**Japan x Algeria / 1:05pm-3:00pm (#1)**
- 14<sup>th</sup> ■ **Swimming; Athletics / 4:00am-5:30am**  
**(#1)**  
■ **Wheelchair Tennis; Swimming / 1:05pm-**  
**3:00pm (#1)**

- 15<sup>th</sup> ■ **Wheelchair Rugby / 3:30am-5:30am (#1)**  
■ **Wheelchair Tennis / 1:05pm-3:00pm**  
**(#1)**
- 16<sup>th</sup> ■ **Wheelchair Rugby / 3:30am-5:30am (#1)**  
■ **Athletics; Swimming / 1:05pm-3:00pm**  
**(#1)**
- 17<sup>th</sup> ■ **Wheelchair Rugby / 3:30am-5:30am (#1)**  
■ **Swimming; Athletics / 1:50pm-3:00pm**  
**(#1)**
- 18<sup>th</sup> ■ **Swimming; Athletics / 4:00am-5:30am**  
**(#1)**  
■ **Swimming; Athletics / 7:45am-9:00am**  
**(#1)**  
■ **Swimming; Athletics / 1:05pm-3:00pm**  
**(#1)**
- 19<sup>th</sup> ■ **Closing Ceremony / 7:30am-8:15am**  
**(#2)**  
■ **Closing Ceremony / 8:15am-10:30am**  
**(#1)**



Please feel free to contact to the International Exchange Lounge at 082-247-9715.

E-Mail: [golounge@pcf.city.hiroshima.jp](mailto:golounge@pcf.city.hiroshima.jp)

September 2016



# Concerts & Plays



## Ticket Offices

- ① EDION Play Guide (*Honkan*, B1F) (Kamiya-cho, Naka-ku; Tel. 247-5111)
- ② YAMAHA Music (Kamiya-cho, Naka-ku; Tel. 244-3779 Closed on the 1<sup>st</sup> & the 3<sup>rd</sup> Wednesdays)
- ③ Hiroshima Yume Plaza (Hondori, Naka-ku; Tel. 544-1122 Closed on Wednesdays)
- ④ Kawai Music Shop (Horikawa-cho, Naka-ku; Tel. 243-9291 Closed on Tuesdays)
- ⑤ Fukuya Department Store, Hatchobori (7F) (Ebisu-cho, Naka-ku; Tel. 246-6111)
- ⑥ Fukuya Department Store, Hiroshima Station (7F) (Matsubara-cho, Minami-ku; Tel. 568-3111)
- ⑦ Alpark Tenmaya (3F) (Inokuchi-myoin, Nishi-ku; Tel. 501-1111)
- ⑧ Hiroshima Arts Gakki (Hatchobori, Naka-ku; Tel. 227-6601)

Date / Starting Time (Opening Time) / Venue / Ticket Price / Tickets Go on Sale Date / Ticket Offices / Inquiries

♪ Event schedules are subject to change.

Please contact the event office before you go. ♪

## September

### ★ Ventures Japan Tour 2016

1<sup>st</sup> Thurs. / 6:30pm (6:00pm) / JMS Aster Plaza /  
¥6,000/ ①, Lawson, Ticket PIA, e+ / Now on sale  
/ Candy Promotion Hiroshima 082-249- 8334

### ★ Daisuke Suzuki Classical Guitar Recital

2<sup>nd</sup> Fri. / 6:45pm (6:15pm) / Higashi Kumin Bunka  
Center / Adults: Advance-¥2,500 At the door-  
¥3,000; High school students and under-¥1,500 (all  
tickets are for non-reserved seats.) / Please ask the  
concert organizer for ticket information. / Higashi  
Kumin Bunka Center 082-264-5551, Hiroshima  
Guitar Association 0829-38-4558 (Ibuki)

### ★ Disney on Ice Japan Tour 2016: Frozen

Sept. 2 (Fri.), 3 (Sat.), 4 (Sun.) & 5 (Mon.) /  
Hiroshima Green Arena / Now on sale / ①, Seven-  
Eleven, e-get, Lawson, Ticket PIA, e+, Rakuten  
Ticket / Disney on Ice Hiroshima Office (inside  
Hiroshima TV) 082-541-5599 (Mon. – Fri.,  
10:00am – 6:00pm)

#### ◆ Disney on Ice Schedule ◆

Sept. 2	Sept. 3	Sept. 4	Sept. 5
—	10:00am	10:00am	—
2:30pm	2:00pm	2:00pm	—
6:30pm	6:00pm	6:00pm	6:30pm

◇ Doors will open 45 min. before the times above.

#### ◆ Ticket Prices ◆

##### ① Sept. 2 (Fri.) & 5 (Mon.)

Adults<sup>1</sup> : Premium tickets<sup>3</sup> -¥8,000

S-¥5,500

Pair tickets for adults (S seats)-¥10,000

Children<sup>2</sup> : Premium tickets-¥8,000

S-¥4,500

##### ② Sept. 3 (Sat.) & 4 (Sun.)

Adults: Premium tickets-¥8,000

S-¥6,000

Pair tickets for adults (S seats)-¥11,000

Children: Premium tickets-¥8,000

S-¥5,000

#### <NOTICE>

<sup>1</sup> Junior high school students and up

<sup>2</sup> 3 years old to elementary school 6<sup>th</sup> grade

<sup>3</sup> Tickets that come with a 1,000 yen goods  
coupon

◇ Children under 2 years old are free if they sit on  
the lap of an accompanying adult (one child per  
adult). Tickets are required for them if they take  
their own seats.

◇ Pair tickets are available for 6:30pm on Sept. 2 &  
5, and 6:00pm on Sept. 3 & 4.

### ★ Napalm Death Japan Tour 2016

8<sup>th</sup> Thurs. / 6:30pm (5:30pm) / Hiroshima Club  
Quattro / ¥6,500 / Now on sale / ①, Lawson,  
Ticket PIA, e+, Tower Records Hiroshima  
(Hiroshima PARCO, *Shinkan*, 10F), Club Quattro  
(Hiroshima PARCO, *Honkan*, 10F) / Hiroshima  
Club Quattro 082-542-2280

Please feel free to contact the International Exchange Lounge at 082-247-9715.

E-mail: [golounge@pcf.city.hiroshima.jp](mailto:golounge@pcf.city.hiroshima.jp)

September 2016



★ **Hiroshima Symphony Orchestra:  
The 363<sup>rd</sup> Subscription Concert**

(*Adams: The Chairman Dances (from The Nixon in China)*; *Corigliano: Chaconne (from The Red Violin)*; *Ives: Symphony No. 2*)

9<sup>th</sup> Fri. / 6:45pm (5:45pm) / Hiroshima Bunka Gakuen HBG Hall / S-¥5,200 A-¥4,700 B-¥4,200 Students-¥1,500 (Student tickets are only sold at the Hiroshima Symphony Orchestra Office.) / Now on sale / ①⑤⑥⑦, Ticket PIA, Lawson (convenience store), Chugoku Shimbun & Hiroshima Symphony Orchestra Office / Hiroshima Symphony Orchestra Office 082-532-3080 E-mail: info@hirokyo.or.jp  
 ♪ Conductor: Kazuyoshi Akiyama / Violin: Rumi Kurakawa

★ **Hiroshima Opera Ensemble:  
The 41<sup>st</sup> Regular Performance:  
Madama Butterfly (by G. Puccini)**

NEW!!

① 10<sup>th</sup> Sat. ② 11<sup>th</sup> Sun. / ① the 10<sup>th</sup>: 6:00pm (5:15pm) ② the 11<sup>th</sup>: 2:00pm (1:15pm) / JMS Aster Plaza / Advance: Adults-¥6,000 High school students and under-¥3,000; At the door: Adults-¥6,500 High school students-¥3,500 / Now on sale / ①⑥⑦, JMS Aster Plaza, Ticket PIA / Hiroshima Opera Ensemble Office 082-294-6144 / 090-3630-1561 E-mail: m.kohno4-9@tune.ocn.ne.jp  
 ♪ This will be played in Italian with Japanese subtitles.

★ **The 6<sup>th</sup> Jubilate Concert**

11<sup>th</sup> Sun. / 2:00pm (1:30pm) / Elisabeth University of Music, Cecilia Hall / ¥1,000/ Now on sale / ①⑥ / 090-2860-4327 (Takenaka)

★ **Piano Cosmos Concert Vol. 4**

11<sup>th</sup> Sun. / 2:00pm / Higashi Kumin Bunka Center / Adults-¥2,000 Students-¥1,000 / Please ask the concert organizer for ticket information. / 082-211-3978 (Takenaka)

★ **Wadaiko (traditional Japanese drum)**

11<sup>th</sup> Sun. / 2:00pm (1:30pm) / Aki Kumin Bunka Center / Advance: Junior high school students and up-¥1,000 3 years old and up-¥500; At the door: Junior high school students and up-¥1,200 3 years old and up-¥600 / Now on sale / JMS Aster Plaza, Kumin Bunka Centers / Aki Kumin Bunka Center 082-824-1330 (closed on Mondays)

★ **Atef Halim Violin Charity Concert**

(*J. S. Bach: Sonata for Solo Violin No. 1 in G minor, BWV1001*; *J. S. Bach: Sonata for Solo Partita No. 2 in D minor, BWV1004*; *F. Schubert: Ave Maria*; *J. Massenet: Meditation from the opera THAIS and others*)  
 11<sup>th</sup> Sun. / 4:00pm (3:30pm) / Memorial Cathedral for World Peace / Adults-¥2,000 Students-

¥1,000 (all non-reserved seats) / Now on sale / ①⑥⑦ / A&A art 03-3392-2955 E-mail: info@atefhalim.com

★ **Shochiku Kabuki**

15<sup>th</sup> Thurs. / ① Noon (11:30am) ② 4:00pm (3:30pm) / Kure City Bunka Hall / ① S-¥6,200 ② S-¥6,200 A-¥4,200 B-¥3,100 Students (25 years old and under, student ID required)-¥1,080  
 ✧ Student tickets are only sold at Kure City Bunka Hall, Ticket PIA, Lawson and Seven-Eleven. / Now on sale / ①⑥, Ticket PIA, Lawson, Seven-Eleven / Kure City Bunka Hall 0823-25-7878  
 ♪ *Kabuki* is a traditional Japanese performing art.

★ **Hiroshima Symphony Orchestra Discovery Series: "Gift" Vol. 2**

(*Toru Takemitsu: Toward the Sea II*; *Britten: Four Sea Interludes from "Peter Grimes" Op. 33a*; *Mozart: Symphony No. 39 in E-flat major K. 543*)

16<sup>th</sup> Fri. / 6:45pm (5:45pm) / JMS Aster Plaza / S-¥5,200 A-¥4,200 B-¥3,200 Students-¥1,000 (Student tickets are only sold at the Hiroshima Symphony Orchestra Office.) / Now on sale / ①⑤⑥⑦, Ticket PIA, Lawson (convenience store), Chugoku Shimbun, Hiroshima Symphony Orchestra Office, JMS Aster Plaza / Hiroshima Symphony Orchestra Office 082-532-3080 E-mail: info@hirokyo.or.jp

♪ Conductor: Kazuyoshi Akiyama  
 Alto flute: Kumi Morikawa  
 Harp: Reine Takano

★ **Marimba Paradise Special Concert**

17<sup>th</sup> Sat. / 2:30pm (2:00pm) / Nishi Kumin Bunka Center / Advance: Adults-¥2,500 High school students and under & Seniors (65 years old and up)-¥1,500; At the door: Adults-¥3,000 High school students and under & Seniors (65 years old and up)-¥2,000 (all tickets are for non-reserved seats.) / Now on sale / ①⑥⑦, Kumin Bunka Centers, JMS Aster Plaza, Chugoku Shimbun / Nishi Kumin Bunka Center 082-234-1960 (closed on Mondays)

★ **Aki Classical Music Concert Vol. 166:  
Wind Brass Concert**

18<sup>th</sup> Sun. / 2:00pm (1:30pm) / Aki Kumin Bunka Center / Free admission / Aki Kumin Bunka Center 082-824-1330 (closed on Mondays)

★ **Ken Nishikiori Tenor Recital**

18<sup>th</sup> Sun. / 2:30pm (2:00pm) / Nishi Kumin Bunka Center / Advance: Adults-¥4,000 High school students and under & Seniors (65 years old and up)-¥3,000; At the door: Adults-¥4,500 High school students and under & Seniors (65 years old and up)-¥3,500 (all tickets are for non-reserved seats.) / Now on sale / ①⑥⑦, Kumin Bunka Centers, JMS Aster

Please feel free to contact the International Exchange Lounge at 082-247-9715.

E-mail: golounge@pcf.city.hiroshima.jp

September 2016



Plaza, Chugoku Shimbun / Nishi Kumin Bunka Center 082-234-1960 (closed on Mondays)

★ **Aki Classical Music Concert Vol. 167: Trio vs Trio**

19<sup>th</sup> Mon. / 2:00pm (1:30pm) / Aki Kumin Bunka Center / Free admission / Aki Kumin Bunka Center 082-824-1330 (closed on Mondays)

★ **Try a Dance vol. 13**

19<sup>th</sup> Mon. / 2:00pm (1:30pm) / JMS Aster Plaza / ¥1,000 (all non-reserved seats) / Now on sale / JMS Aster Plaza / JMS Aster Plaza 082-244-8000  
♪ This is a contemporary dance performance.

NEW!!

★ **Halloween Japan Tour 2016**

20<sup>th</sup> Tue. / 7:00pm (6:00pm) / Hiroshima Club Quattro / ¥9,000 / Now on sale / ①, e+, Ticket PIA, Lawson, Tower Records Hiroshima (Hiroshima PARCO, *Shinkan* 9F), Club Quattro (Hiroshima PARCO, *Honkan*, 10F) / Hiroshima Club Quattro 082-542-2280

NEW!!

★ **Junko Masumoto Soprano Recital**

22<sup>nd</sup> Thurs. / 1:30pm (1:00pm) / Hiroshima Kenmin Bunka Center / Advance-¥2,000 At the door-¥2,500 (all non-reserved seats) / Please ask the concert organizer for ticket information. / 090-6435-6589 (Kudo)

★ **Chamber Music Concert**

22<sup>nd</sup> Thurs. / 2:30pm (2:00pm) / Nishi Kumin Bunka Center / Advance: Adults-¥2,500 High school students and under & Seniors (65 years old and up)-¥1,500; At the door: Adults-¥3,000 High school students and under & Seniors (65 years old and up)-¥2,000 / Now on sale / ①⑥⑦, Kumin Bunka Centers, JMS Aster Plaza / Nishi Kumin Bunka Center 082-234-1960 (closed on Mondays)

★ **Ensemble Pegasus, Tokyo in Hiroshima**

22<sup>nd</sup> Thurs. / 3:00pm (2:30pm) / Aki Kumin Bunka Center / Adults-¥2,000 University students and under-¥1,500 / Now on sale / ②⑧ / Ensemble Pegasus, Tokyo [pegasus.tokyo2016@gmail.com](mailto:pegasus.tokyo2016@gmail.com) / 0823-74-9182 (Matsuzaki)  
♪ Wind brass concert

NEW!!

★ **The 16<sup>th</sup> Kagura Performance at Sakurapia**

25<sup>th</sup> Sun. / 10:30am (10:00am) / Hatsukaichi Bunka Hall Sakurapia / Stalls: High school students and up-¥1,000 Junior high & Elementary school students-¥300; Balcony seats: High school students and up-¥800 Junior high & Elementary school students-¥200 / Now on sale / ①, Sakurapia Online Ticket (<https://online.hatsukaichi-csa.net/ticket/>) / Hatsukaichi Bunka Hall Sakurapia 0829-20-0111

★ **Czech Philharmonic String Quartet**

27<sup>th</sup> Tue. / 6:30pm (6:00pm) / Hiroshima Kenmin Bunka Center / S-¥4,000 A-¥3,500 B-¥3,000 / Now on sale / ①⑥, Ticket PIA / Green Concert Hiroshima 082-241-8868

★ **An Evening of Mozart by Masaki Ueno**

27<sup>th</sup> Tue. / 6:30pm / Higashi Kumin Bunka Center / Adults-¥3,000 Students-¥2,000 / Please ask the concert organizer for ticket information. / 090-5168-2848 (Ueno)  
♪ Violin & piano concert

October

NEW!!

★ **"The History of Music" Concert by Riberade**

1<sup>st</sup> Sat. / 2:00pm (1:30pm) / Aki Kumin Bunka Center / ¥500 (all non-reserved seats) / Now on sale / ①, JMS Aster Plaza, Kumin Bunka Centers / Hiroshima-shi Bunka Zaidan 082-244-0750  
♪ Riberade is an ensemble group consisting of a piano and two violins.

★ **Chisako Takashima & 12 Violinists: MUSE ~Best 12 Harmony~**

1<sup>st</sup> Sat. / 2:30pm (2:00pm) / Ueno Gakuen Hall / S-¥6,000 A-¥5,000 / Now on sale / ①⑤⑥⑦, Lawson, Ticket PIA, Hatsukaichi Bunka Hall Sakurapia, e+ / HOME Event Center 082-221-7116 (Mon. – Fri., 10:00am – 5:00pm); Shimizu Geino Kikaku 082-292-0080 (Mon. – Fri., 10:00am – 5:00pm)  
♪ Piano: Aki Muramatsu

NEW!!

★ **Music Group Fermata: The 9<sup>th</sup> Regular Concert: "One Day More" from Les Misérables**

① 1<sup>st</sup> Sat. ② 2<sup>nd</sup> Sun. / ① the 1<sup>st</sup>: 5:30pm (5:00pm) ② the 2<sup>nd</sup>: ① 12:15pm (11:45am) ② 4:30pm (4:00pm) / Higashi Kumin Bunka Center / Advance: Adults-¥3,700 Children-¥2,800; At the door: Adults-¥3,900 Children-¥2,800 / Please ask the concert organizer for ticket information. / Music Group Fermata 080-5757-4618

NEW!!

★ **The 469<sup>th</sup> Pipe Organ Concert**

2<sup>nd</sup> Sun. / 4:00pm – 5:00pm / Memorial Cathedral for World Peace / Free admission / Memorial Cathedral for World Peace 082-221-0621

★ **Music from Nordic Countries (piano & trumpet concert)**

4<sup>th</sup> Tue. / 7:00pm (6:15pm) / Hatsukaichi Bunka Hall Sakurapia / Advance-¥2,000 At the door-¥2,500 / Now on sale / Sakurapia / Hatsukaichi Bunka Hall Sakurapia 0829-20-0111

NEW!!

Please feel free to contact the International Exchange Lounge at 082-247-9715.

E-mail: [golounge@pcf.city.hiroshima.jp](mailto:golounge@pcf.city.hiroshima.jp)

September 2016



★ **Drum TAO: – Bukyo – Odoru Wa Daiko**

4<sup>th</sup> Tue. / 7:00pm (6:30pm) / JMS Aster Plaza / SS-¥7,000 S-¥6,000 A-¥4,500 / Now on sale / ①⑥, Ticket PIA, Lawson, e+ / Candy Promotion Hiroshima 082-249-8334 (Mon. – Fri., 11:00am – 6:30pm)

♪ *Taiko* (a traditional Japanese Drum) art performance

★ **Wiener Philharmoniker Week in Japan 2016: Zubin Mehta Conducts Wiener Philharmoniker**

5<sup>th</sup> Wed. / 7:00pm (6:30pm) / Hiroshima Bunka Gakuen HBG Hall / S-¥33,000 A-¥29,000 B-¥24,000 C-¥19,000 / Now on sale / ①⑥, e+ / Hiroshima TV Event Information Center 082-249-1218 (Mon. – Fri., 10:00am – 6:00pm)

♪ Piano: Rudolf Buchbinder

★ **An Invitation to Traditional Japanese Performing Arts by Ebizo Ichikawa & Shido Nakamura**

6<sup>th</sup> Thurs. / ① 1:00pm ② 5:00pm / Hiroshima Bunka Gakuen HBG Hall / S-¥12,000 A-¥10,000 / Now on sale / ①⑤⑥⑦, Lawson, Ticket PIA, e+ / Shimizu Geino Kikaku 082-292-0080

♪ *Kabuki* and classical Japanese dance performances

NEW!!

★ **Mozart Concert by Ryoko Mishima (piano) & Masaki Ueno (violin)**

6<sup>th</sup> Thurs. / 6:30pm (6:00pm) / Hatsukaichi Bunka Hall Sakurapia / ¥3,000 (all non-reserved seats) / Now on sale / Sakurapia / Hatsukaichi Bunka Hall Sakurapia 0829-20-0111

★ **Mariko Senju Violin Recital**

7<sup>th</sup> Fri. / 7:00pm (6:30pm) / Hatsukaichi Bunka Hall Sakurapia / Adults-¥4,000 High school students and under-¥2,000 / Now on sale / ①, Sakurapia, Chugoku Shimbun, Ticket PIA, Lawson / Hatsukaichi Bunka Hall Sakurapia 0829-20-0111

★ **Jake Shimabukuro Japan Tour 2016**

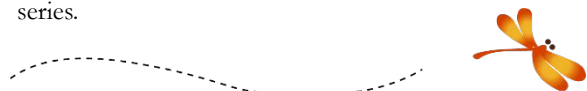
7<sup>th</sup> Fri. / 7:00pm (6:00pm) / Hiroshima Club Quattro / ¥7,000 / Now on sale / Lawson, e+, Ticket PIA / Yumebanchi Hiroshima 082-249-3571

♪ This is an ukulele concert.

★ **Hatsukaichi Music Festival:****Yuji Ohno & Lupintic Six – Lupin Jazz Live**

8<sup>th</sup> Sat. / 5:00pm (4:30pm) / Hatsukaichi Bunka Hall Sakurapia / ¥4,500 / ①, Ticket PIA, Lawson, Sakurapia / Now on sale / Hatsukaichi Bunka Hall Sakurapia 0829-20-0111

♪ "Lupin III" is a famous Japanese manga and anime TV series.

★ **Shinichi Kinoshita****Tsugaru Shamisen Concert**

9<sup>th</sup> Sun. / 2:00pm (1:30pm) / Hatsukaichi Bunka Hall Sakurapia / ¥2,500 / Now on sale / ①, Sakurapia, Lawson, Ticket PIA / Hatsukaichi Bunka Hall Sakurapia 0829-20-0111

♪ *Shamisen*, traditional Japanese guitar concert

★ **Yoshihiro Yoshikawa Cello Recital**

9<sup>th</sup> Sun. / 5:00pm (4:30pm) / Hatsukaichi Bunka Hall Sakurapia / ¥3,500 / Now on sale / ①⑥, Sakurapia, Ticket PIA, Lawson, e+, Seven-Eleven / Home Event Center 082-221-7116, Samon Promotion 06-6225-2237

★ **Hiroshima Symphony Orchestra: Masterpiece Concert ~ Autumn ~**

(Weber: *Der Freischütz*, Overture; Spohr: *Clarinet Concerto No. 2 in E-flat major Op. 57*; Mendelssohn: *Symphony No. 3 in A minor Op. 56 "Schottische"*)

10<sup>th</sup> Mon. / 3:00pm (2:00pm) / Hiroshima Kokusai Kaigijo (International Conference Center Hiroshima), Phoenix Hall / S-¥4,200 Pair tickets (S seats)-¥6,400 A-¥3,200 B-¥2,200 Students-¥1,500 (Students tickets are only sold at the Hiroshima Symphony Orchestra Office.) / Now on sale / ①⑤⑥⑦, JMS Aster Plaza, Chugoku Shimbun, Hiroshima Symphony Orchestra Office / Hiroshima Symphony Orchestra 082-532-3080 E-mail: info@hirokyo.or.jp

♪ Conductor & Clarinet: Paul Meyer

NEW!!

★ **Koji Takaguchi (violin) & Yoshiko Ishikawa (piano) Duo Concert Vol. 7**

10<sup>th</sup> Mon. / 6:30pm (6:00pm) / Higashi Kumin Bunka Center / Adults-¥2,000 Students-¥1,000 / Please ask the concert organizer for ticket information. / 080-6318-3585 (Takaguchi), 090-6439-4426 (Ishikawa)

★ **Sabastian Führlinger (viola) & Nanako Paul (piano) Duo Concert**

14<sup>th</sup> Fri. / 2:00pm (1:30pm) / Kure City Bunka Hall / ¥1,000 / Now on sale / Seven-Eleven / Kure City Bunka Hall 0823-25-7878

NEW!!

★ **Disney on Classic Magical Night 2016**

15<sup>th</sup> Sat. / 6:00pm (5:00pm) / Hiroshima Bunka Gakuen HBG Hall / S-¥8,300 A-¥6,700 / Now on sale / ①, Lawson, Ticket PIA, e+, Rakuten Ticket / UNION Music Office 082-247-6111

★ **Kaiji Moriyama Solo Dance Performance: KATANA**

15<sup>th</sup> Sat. / 6:00pm (5:30pm) / JMS Aster Plaza / ¥6,000 Students-¥4,500 ✧ Student seat number will be designated on the concert day. Student ID will be required. / Now on sale / ①, Lawson, Ticket

Please feel free to contact the International Exchange Lounge at 082-247-9715.

E-mail: golounge@pcf.city.hiroshima.jp

September 2016



PIA, Seven-Eleven, e+, JMS Aster Plaza / TSS  
Event Office 082-253-1010

NEW!!

★ **Chorale “Elisabeth, ma famille” Concert XIV**

16<sup>th</sup> Sun. / 2:00pm (1:30pm) / Elisabeth University of Music, Cecilia Hall / ¥1,000 (all non-reserved seats) / Please ask the concert organizer for ticket office information. / 082-258-3375 (Shinagawa)

★ **Hiroshima Happy New Ear 22: Marianna Shirinyan Piano Solo Concert**

17<sup>th</sup> Mon. / 7:00pm (6:30pm) / JMS Aster Plaza / Advance: adults-¥2,500 Students-¥1,500; At the door: Adults-¥3,000 Students-¥2,000 / Now on sale / ①⑥, Chugoku Shimbun, JMS Aster Plaza, Ticket PIA, Lawson / Hiroshima Opera & Music Promotion Committee 082-244-8000

★ **Piano Duo Concert**

20<sup>th</sup> Thurs. / 12:20pm – 1:00pm / Hatsukaichi Bunka Hall Sakurapia / Free admission / Hatsukaichi Bunka Hall Sakurapia 0829-20-0111

NEW!!

★ **Elisabeth University of Music: The 76<sup>th</sup> Regular Concert**

21<sup>st</sup> Fri. / 6:30pm (6:00pm) / Elisabeth University of Music, Cecilia Hall / ¥1,000 (all tickets are for non-reserved seats.) / Now on sale / Elisabeth University of Music, Ticket PIA / Elisabeth University of Music 082-225-8004 E-mail: enso01@eum.ac.jp

★ **Hiroshima Symphony Orchestra: The 364<sup>th</sup> Subscription Concert**

(*Rachmaninov: Piano Concerto No. 2 in C minor Op. 18; Berlioz: Symphonie Fantastique Op. 14*)

21<sup>st</sup> Fri. / 6:45pm (5:45pm) / Hiroshima Bunka Gakuen HBG Hall / S-¥5,200 A-¥4,700 B-¥4,200 Students-¥1,500 (Student tickets are only sold at the Hiroshima Symphony Orchestra Office.) / Now on sale / ①⑤⑥⑦, Ticket PIA, Lawson (convenience store), Chugoku Shimbun & Hiroshima Symphony Orchestra Office / Hiroshima Symphony Orchestra Office 082-532-3080 E-mail: info@hirokyo.or.jp

♪ Conductor: Kentaro Kawase / Piano: Marianna Shirinyan

★ **Mnozil Brass “Yes Yes Yes”**

23<sup>rd</sup> Sun. / 2:00pm (1:30pm) / Hatsukaichi Bunka Hall Sakurapia / Adults: S-¥5,000 A-¥4,000; High school students and under: S-¥2,500 A-¥2,000 / Now on sale / ①, Sakurapia, Ticket PIA, Lawson / Hatsukaichi Bunka Hall Sakurapia 0829-20-0111



★ **Hawaiian Music and Fula Dance**

27<sup>th</sup> Thurs. / 6:30pm / Hiroshima Bunka Gakuen HBG Hall / A-¥5,500 B-¥4,800 Students-¥2,000 ✧ Student tickets are only sold at the door. Student ID Will be required. / Now on sale / ①⑥, Ticket PIA, Lawson, Seven-Eleven / MIN-ON Hiroshima 082-567-0585

★ **Flute Concord Hiroshima: The 24<sup>th</sup> Regular Concert**

28<sup>th</sup> Fri. / 6:45pm (6:15pm) / Elisabeth University of Music, Cecilia Hall / Advance: Adults-¥3,000 Students-¥1,500; At the door: Adults-¥3,500 Students-¥2,000 / Now on sale / ①⑧, Ticket PIA / 090-9508-0047 (Miyamoto)

★ **Ringo Starr and His All Star Band**

28<sup>th</sup> Fri. / 7:00pm (6:30pm) / Hiroshima Bunka Gakuen HBG Hall / S-¥15,000 A-¥14,000 / Lawson, e+, Ticket PIA / Now on sale / Yumebanchi Hiroshima 082-249-3571

♪ Tour members:

Steve Lukather (TOTO), Richard Page (ex. Mr. Mister), Gregg Rolie (ex. Santana, Journey), Todd Rundgren (ex. Nazzy, Utopia and The New Cars), Warren Ham (ex. Bloodrock, Kansas, and AD), Gregg Bissonette (ex. David Lee Roth)

## November

★ **Taro Hakase Concert Tour 2016**

2<sup>nd</sup> Wed. / 6:30pm (6:00pm) / Hiroshima Bunka Gakuen HBG Hall / ¥7,800 / Now on sale / ①⑥, Lawson, Ticket PIA, e+ / Candy Promotion Hiroshima 082-249-8334

♪ Violin concert

NEW!!

★ **Jörg Demus Piano Recital**

(*J. S. Bach: aus dem Wohltemperierten Klavier, Band II; L. v. Beethoven: Sonate E-Dur, op. 109; F. Chopin: Ballade Nr. 3 As-Dur, op. 47; J. Demus: Sonate b-Moll, op. 35 “Hommage à Chopin”; F. Chopin: Barcarolle Fis-Dur, op. 60*)

2<sup>nd</sup> Wed. / 6:45pm (6:15pm) / Hatsukaichi Bunka Hall Sakurapia / Advance-¥3,000 At the door-¥3,500 (all non-reserved seats) / Now on sale / ①④, Sakurapia / 082-878-3991 (Okano), 082-872-4852 (Ishimaru)

NEW!!

★ **Kyogen by Mansai Nomura**

11<sup>th</sup> Thurs. / ① 2:30pm ② 7:00pm / JMS Aster Plaza / S-¥4,500 A-¥3,000 B-¥2,000 Seats for wheel chair-¥3,000 / From Tue., September 6 (from Sat., September 3 at JMS Aster Plaza) / ①⑥, JMS Aster Plaza, Lawson, Ticket PIA / JMS Aster Plaza 082-244-8000

♪ This is a traditional Japanese performing art.

Please feel free to contact the International Exchange Lounge at 082-247-9715.

E-mail: golounge@pcf.city.hiroshima.jp

September 2016



★ **Hiroshima Symphony Orchestra:  
The 365<sup>th</sup> Subscription Concert**

(Akira Ifukube: *Lauda Concertata*; Wagner: *Lohengrin*,  
*Prelude*; Wagner: *Tannhäuser*, *Overture and*  
*Bacchanale (Paris version)*; Wagner: *Tristan und Isolde*,  
*Prelude and Liebestod*)

11<sup>th</sup> Fri. / 6:45pm (5:45pm) / Hiroshima Bunka  
Gakuen HBG Hall / S-¥5,200 A-¥4,700 B-  
¥4,200 Students-¥1,500 (Student tickets are only  
sold at the Hiroshima Symphony Orchestra Office.) /  
From Sun., September 11 (from Mon., September 12  
at the Hiroshima Symphony Orchestra Office.) /  
①⑤⑥⑦, Ticket PIA, Lawson (convenience store),  
Chugoku Shimbun & Hiroshima Symphony  
Orchestra Office / Hiroshima Symphony Orchestra  
Office 082-532-3080 E-mail: info@hirokyo.or.jp  
♪ Conductor: Junichi Hirokami / Marimba: Noriko  
Tsukagoshi / Chorus: Elisabeth University of Music

★ **Classical Guitar Joint Concert**

11<sup>th</sup> Fri. / 7:00pm (6:30pm) / Higashi Kumin Bunka  
Center / Advance-¥1,000 At the door-¥1,500 /  
Please ask the concert organizer for ticket  
information. / buky.guit@gmail.com (Ibuki), 090-  
2095-8545 (Matsue)

★ **Sofia Solisten & Liya Petrova (violin)**

19<sup>th</sup> Sat. / 2:00pm (1:30pm) / JMS Aster Plaza / S-  
¥5,000 A-¥4,000 B-¥3,000 / ①⑥⑦, JMS Aster  
Plaza / Now on sale / HOME Event Center 082-  
221-7116 (Mon. – Fri., 10:00am – 5:00pm)

★ **Trio Note Concert**

19<sup>th</sup> Sat. / 2:00pm (1:30pm) / Hatsukaichi Bunka  
Hall Sakurapia / Adults-¥500 High school  
students and under-Free (all non-reserved seats) /  
Now on sale / ⑥, Sakurapia / Hatsukaichi Bunka  
Hall Sakurapia 0829-20-0111  
♪ Piano, violin & cello concert

NEW!!

★ **Aki Takahashi Piano Recital**

23<sup>rd</sup> Wed. / 2:00pm (1:20pm) / YMCA Kokusai  
Bunka Hall / Adults: Advance-¥3,000 At the  
door-¥3,500; High school students and under-  
¥1,500 / Please ask the concert organizer for ticket  
information. / Mimi no Sora 090-7574-3474 (from  
the evening) E-mail: mnos2015@excite.co.jp

★ **Hiromi Uehara the Trio Project:  
SPARK Japan Tour 2016**

23<sup>rd</sup> Wed. / 6:00pm (5:00pm) / Hiroshima Kokusai  
Kaigijo (International Conference Center  
Hiroshima), Phoenix Hall / S-¥7,100 A-¥6,070 /  
From Sat., September 17 / ⑥, Lawson, e+, Ticket  
PIA / Yumebanchi Hiroshima 082-249-3571

★ **Karen Takaguchi Marimba Concert**

24<sup>th</sup> Thurs. / ① 2:00pm (1:30pm) ② 7:00pm  
(6:30pm) / Nishi Kumin Bunka Center / Advance-  
¥1,500 At the door-¥2,000 (all tickets are for non-  
reserved seats.) / Now on sale / JMS Aster Plaza,  
Kumin Bunka Centers / Nishi Kumin Bunka Center  
082-234-1960 (9:00am – 9:00pm, closed on  
Mondays) ♪ Marimba, soprano (Yuko Ono) &  
saxophone (Yukari Uekawa) concert

★ **Hiroshima Opera Renaissance:  
Suor Angelica & Gianni Schicchi (Italian  
libretto by G. Forzano & Composed by G.  
Puccini)**

① 26<sup>th</sup> Sat. ② 27<sup>th</sup> Sun. / 2:00pm (1:15pm) / JMS  
Aster Plaza / S-¥8,000 A-¥6,000 B-¥4,000 C-  
¥2,000 / Now on sale / Please ask the concert  
organizer for ticket office information. / Hiroshima  
Opera and Music Promotion Committee (inside JMS  
Aster Plaza) 082-244-8000

♪ This will be played in Italian with Japanese subtitles.  
Orchestra: Hiroshima Symphony Orchestra

★ **Kobudo**

27<sup>th</sup> Sun. / 5:00pm (4:30pm) / Nishi Kumin Bunka  
Center / ¥5,000 (all tickets are for non-reserved  
seats.) / Please ask the concert organizer for ticket  
information. / Fax: 082-229-3628 Tel: 090-3173-  
5161 E-mail: suikousya@proof.ocn.ne.jp

♪ *Kobudo* is an ensemble group consisting of a piano, a  
*shakuhachi* (traditional Japanese bamboo flute) and a  
cello.

Piano: Takeshi Senoo / *Shakuhachi*: Dozan Fujiwara /  
Cello: Nobuo Furukawa

## December

★ **Tokyo Ska Paradise Orchestra: 2016 Live  
House Tour “Paradise Has No Border”**

① 2<sup>nd</sup> Fri. ② 3<sup>rd</sup> Sat. / ① the 2<sup>nd</sup> – 7:00pm (6:15pm)  
② the 3<sup>rd</sup> – 6:00pm (5:15pm) / Hiroshima Club  
Quattro / ¥5,500 / Now on sale / e+, Ticket PIA,  
Lawson / Candy Promotion Hiroshima 082-249-  
8334

NEW!!

★ **Concert by Hiroshima Symphony Orchestra  
Members**

9<sup>th</sup> Fri. / 6:30pm (6:00pm) / Hatsukaichi Bunka Hall  
Sakurapia / Adults-¥1,500 High school students  
and under-¥500 / From Sun., September 4 / ①,  
Sakurapia / Hatsukaichi Bunka Hall Sakurapia  
0829-20-0111



Please feel free to contact the International Exchange Lounge at 082-247-9715.

E-mail: golounge@pcf.city.hiroshima.jp

September 2016



★ **St. Petersburg Chamber Ensemble:**

NEW!!

**Christmas / Ave Maria**

13<sup>th</sup> Tue. / 7:00pm (6:30pm) / Hatsukaichi Bunka  
Hall Sakurapia / ¥4,500 / From Sun., September 18  
/ ①, Sakurapia / Hatsukaichi Bunka Hall Sakurapia  
0829-20-0111

**January, 2017**

NEW!!

★ **Rintaro Akamatsu Piano Recital 2017**

8<sup>th</sup> Sun. / 2:00pm (1:30pm) / Nishi Kumin Bunka  
Center / Advance: Adults-¥2,500 High school  
students and under-¥1,500; At the door: Adults-  
¥3,000 High school students and under-¥2,000 /  
Now on sale / ②④, Kumin Bunka Centers (except  
Asakita Kumin Bunka Center), JMS Aster Plaza,  
Ticket PIA / Studio Imagine 082-541-0858

**February, 2017**

★ **Hironori Ogawa Marimba Concert**

23<sup>rd</sup> Thurs. / ① 2:00pm (1:30pm) ② 7:00pm  
(6:30pm) / Nishi Kumin Bunka Center / Advance-  
¥1,500 At the door-¥2,000 (all tickets are for non-  
reserved seats.) / Now on sale / JMS Aster Plaza,  
Kumin Bunka Centers / Nishi Kumin Bunka Center  
082- 234-1960 (9:00am – 9:00pm, closed on  
Mondays)  
♪ Marimba: Eiko Ikegami, Sara Tatsuyama



Please feel free to contact the International Exchange Lounge at 082-247-9715.

E-mail: [golounge@pcf.city.hiroshima.jp](mailto:golounge@pcf.city.hiroshima.jp)

September 2016





# Event Halls

◆ **Hiroshima Bunka Gakuen HBG Hall** 広島文化学園 HBG ホール

(3-3 Kako-machi, Naka-ku, Hiroshima Tel. 082-243-8881)

- ▶ Take the No.24 bus bound for Yoshijima Eigyocho (吉島営業所) and get off at Kako-machi (加古町). Walking time to destination: 2 minutes

◆ **Hiroshima Kenmin Bunka Center** 広島県民文化センター

(1-5-3 Ote-machi, Naka-ku, Hiroshima Tel. 082-245-2311)

- ▶ Take a streetcar or a bus and get off at Hondori (本通) or Kamiya-cho (紙屋町). Walking time to destination: 5 minutes

◆ **JMS Aster Plaza** JMS アステールプラザ

(4-17 Kako-machi, Naka-ku, Hiroshima Tel. 082-244-8000)

- ▶ Take the No.24 bus bound for Yoshijima Eigyocho (吉島営業所) and get off at Kako-machi (加古町). Walking time to destination: 2 minutes

◆ **Ueno Gakuen Hall** 上野学園ホール

(19-1 Hakushima-kita-machi, Naka-ku, Hiroshima Tel. 082-223-6367)

- ▶ Take the Astramline bound for Koiki Koen-mae (広域公園前) or Chorakuji (長楽寺) Station and get off at Hakushima (白島) Station. Walking time to destination: 3 minutes

◆ **Hiroshima Kokusai Kaigi-jo (International Conference Center Hiroshima), Phoenix Hall**  
広島国際会議場フェニックスホール

(1-5 Nakajima-cho, Naka-ku, Hiroshima Tel. 082-242-7777)

- ▶ Get on a Hiroshima Bus bound for Yoshijima and get off at Heiwa Kinenkoen (平和記念公園).
- ▶ Get off at the Chuden-mae (中電前) or Genbaku Dome-mae (原爆ドーム前) Streetcar Stops. Walking time to destination: 5 minutes

◆ **Hiroshima Club Quattro** 広島クラブクアトロ

(10-1 Hondori, Naka-ku, Hiroshima (Hiroshima PARCO Hon-kan 10F) Tel. 082-542-2280)

- ▶ Take a streetcar and get off at Hatchobori (八丁堀). Walking time to destination: 5 minutes

◆ **Hiroshima Green Arena** 広島グリーンアリーナ

(4-1 Moto-machi, Naka-ku, Hiroshima Tel. 082-228-1111)

- ▶ Take a streetcar and get off at Kamiya-cho-nishi (紙屋町西) or Kamiya-cho-higashi (紙屋町東). Walking time to destination: 5 minutes

◆ **Hiroshima Sun Plaza** 広島サンプラザ

(3-1-1 Shoko Center, Nishi-ku, Hiroshima Tel. 082-278-5000)

- ▶ Take a train or streetcar to Miyajima and get off at JR Shin-inokuchi (新井口) Station (JR Sanyo Line) or Shoko Center-iriguchi (商エセンター入り口) Streetcar Stops (Hiroden Miyajima Line). Walking time to destination: 5 minutes

◆ **Elisabeth University of Music** エリザベト音楽大学

(4-15 Nobori-machi, Naka-ku, Hiroshima Tel. 082-221-0918)

- ▶ Take a streetcar and get off at Kanayama-cho (銀山町) or Jogakuin-mae (女学院前). Walking time to destination: 10 minutes

◆ **Higashi Kumin Bunka Center** 東区民文化センター

(10-31 Higashi-kaniya-cho, Higashi-ku, Hiroshima Tel. 082-264-5551)

- ▶ From the Shinkansen Exit of the JR Hiroshima (広島) Station, walking time to destination is 10 minutes.

Please feel free to contact the International Exchange Lounge at 082-247-9715.

E-mail: [golounge@pcf.city.hiroshima.jp](mailto:golounge@pcf.city.hiroshima.jp)

September 2016



◆ **Nishi Kumin Bunka Center** 西区民文化センター

(6-1 Yokogawa Shin-machi, Nishi-ku, Hiroshima Tel. 082-234-1960)

➤ From JR Yokogawa (横川) Station, walking time to destination is 5 minutes.

◆ **Saeki Kumin Bunka Center** 佐伯区民文化センター

(6-1-10 Itsukaichi-chuo, Saeki-ku, Hiroshima Tel. 082-921-7550)

➤ From Hiroshima Bus Center (Sogo Hiroshima, 3F), take a bus to Yakushigaoka-danchi (薬師が丘団地), Shikigaoka-danchi (四季が丘団地), Higashi-kannondai-danchi (東観音台団地) or Ajinadai-kita (阿品台北) and get off at Saeki-kumin Bunka Center-mae (佐伯区民文化センター前). Walking time to destination: 1 minutes

◆ **Aki Kumin Bunka Center** 安芸区民文化センター

(2-16 Funakoshi-minami 3-chome, Aki-ku, Hiroshima Tel. 082-824-1330)

➤ From JR Kaitaichi (海田市) Station (JR Sanyo Line), walking time to destination is 5 minutes.

◆ **Blue Live Hiroshima** ブルーライブ広島

(3-12-69 Ujina Kaigan, Minami-ku, Hiroshima Tel. 082-250-5522)

➤ Take a streetcar for Hiroshima-ko (No. 1, 3 or 5) and get off at Kaigan-dori (海岸通). Walking time to destination: 5 minutes

◆ **Gewand Halle** ゲバントホール

(Wako Palace 21 5F, 2-1-13 Honkawa-cho, Naka-ku, Hiroshima Tel. 082-503-1711)

➤ Take a streetcar and get off at Honkawa-cho (本川町). Walking time to destination: 4 minutes

◆ **lifeone221 hall** lifeone221 ホール

(2-2-1 Itsukaichi-chuo, Saeki-ku, Hiroshima-shi Tel. 082-922-0028)

➤ Take a bus from JR Itsukaichi (五日市) Station (north exit) and get off at Itsukaichi-chuo 2-chome (五日市中央二丁目). Walking time to destination: 5 minutes.

◆ **Memorial Cathedral for World Peace** 世界平和記念聖堂

(4-42 Nobori-cho, Naka-ku, Hiroshima-shi Tel. 082-221-0621)

➤ From Kanayama-cho (銀山町) or Jogakuin-mae (女学院前) Streetcar Stop, walking time to destination is 10 minutes.

◆ **Hiroshima Nagarekawa Church** 広島流川協会

(8-30 Kami-nobori-cho, Naka-ku, Hiroshima Tel. 082-221-1813)

➤ From Jogakuin-mae (女学院前) or Shukkeien-mae (縮景園前) Streetcar Stop, walking time to destination is 5 minutes.

◆ **Japan Evangelical Lutheran Church of Hiroshima** ルーテル広島教会

(2-12 Tsurumi-cho, Naka-ku, Hiroshima Tel. 082-241-3695)

➤ From Hijiyama-shita (比治山下) Streetcar Stop, walking time to destination is 3 minutes.

◆ **YMCA Kokusai Bunka Hall** YMCA 国際文化ホール

(7-11 Hatchobori, Naka-ku Tel. 082-227-6816)

➤ From Tate-machi (立町) Streetcar Stop, walking time to destination is 3 minutes.

◆ **Hatsukaichi Bunka Hall Sakurapia** はつかいち文化ホールさくらびあ

(1-11-1 Shimo-hera, Hatsukaichi City Tel. 0829-20-0111)

➤ Take a train on the JR Sanyo Line bound for Iwakuni and get off at JR Miyauchi Kushido (宮内串戸) Station. Walking time to destination: 15 minutes

➤ Take a streetcar on the Hiroden Miyajima Line and get off at Hatsukaichi Shiyakusho-mae (廿日市市役所前). Walking time to destination: 8 minutes

◆ **Kure City Bunka Hall** 呉市文化ホール

(3-10-1 Chuo, Kure City Tel. 0823-25-7878)

➤ From JR Kure (呉) Station (JR Kure Line), walking time to destination is 7 minutes.

Please feel free to contact the International Exchange Lounge at 082-247-9715.

E-mail: [golounge@pcf.city.hiroshima.jp](mailto:golounge@pcf.city.hiroshima.jp)

September 2016





# Museums



A: Adults    U: University Students    H: High School Students  
 J: Junior High School Students    E: Elementary School Students  
 S: Seniors (65 years old and up - Identification showing your date of birth is required.)

◆ Generally, admission is allowed up to 30 min. prior to closing. ◆

## Hiroshima Museum of Art

Address: 3-2 Moto-machi, Naka-ku, Hiroshima City  
 Tel: 082-223-2530  
 Hours: 9:00am – 5:00pm  
 Closed: Mondays (except during special exhibitions)  
 URL: <http://www.hiroshima-museum.jp>

### Special Exhibition

#### ■ Masterpieces from the Art Collection of Yasunari Kawabata

Period: Sat., Sept. 3 – Sun., Oct. 16

Admission Fee:

A -¥1,300 (¥1,100), S-¥1,100,  
 U&H-¥1,000 (¥800), J&E-¥600 (¥400)  
 ◇ Advance ticket prices shown in ( ).

### Collection Exhibition

#### ■ Modern European Paintings

Period: Year-round

## Hiroshima City Museum of Contemporary Art

Address: 1-1 Hijiya Koen, Minami-ku, Hiroshima City  
 Tel: 082-264-1121  
 Hours: 10:00am – 5:00pm  
 Closed: Mondays (except national holiday)  
 URL: <http://www.hcmca.cf.city.hiroshima.jp/>

### Special Exhibition

#### ■ 1945±5

Period: Sat., Jul. 30 – Mon., Oct. 10

Admission Fee:

A-¥1,030 (¥820), U-¥720 (¥620),  
 S&H-¥510 (¥410), J & under-Free  
 ◇ Advance ticket prices shown in ( ).

### Collection Exhibition

Admission Fee: A-¥360 / U-¥270 / S&H-¥170  
 / J & under- Free

Holders of special exhibition admission tickets  
 are also entitled to view the collection  
 exhibition.

## ■ 2016 – II

### Collection Highlights & the Special Display: Contemporary Art of "Hiroshima"

Period: Sat., Jun. 18 – Sun., Sept. 25

### Video Art Program (Free admission)

#### ■ A Window to the World [The 52<sup>nd</sup> Program]: Sven Johne

Period: Tue., Jul. 12 – Sun., Sept. 11

### Open Program (Free admission)

#### ■ Summer Workshop Project 2016

Period: Sat., Jul. 16 – Sun., Sept. 11

## Hiroshima Prefectural Art Museum

Address: 2-22 Kaminobori-cho, Naka-ku,  
 Hiroshima City  
 Tel: 082-221-6246  
 Hours: 9:00am – 5:00pm  
 ◇ Open until 8:00pm on Fridays (Apr. 1 – Oct. 30)  
 Closed: Mon., Sept. 5, 12 & 26  
 URL: <http://www.hpam.jp/>

### Special Exhibition

#### ■ Kaii Higashiyama: Nature, Men and Towns

Period: Sat., Sept. 17 – Sun., Oct. 30

Admission Fee:

A-¥1,300 (¥1,100), U&H-¥900 (¥700),  
 J&E-¥600 (¥400)  
 ◇ Advance ticket prices shown in ( ).

### Collection Exhibitions

Admission Fee (all exhibitions):

A-¥510, U-¥310, H, & under-Free

Holders of special exhibition admission tickets  
 are also entitled to view the Museum's Collection  
 exhibits.

#### ■ Hiroshima Prefectural Art Museum Best Selection Exhibit: The Cream of the Collection

Period: Wed., Aug. 31 – Sun., Dec. 18

Please feel free to contact the International Exchange Lounge at 082-247-9715.

E-mail: [golounge@pcf.city.hiroshima.jp](mailto:golounge@pcf.city.hiroshima.jp)

September 2016



**Kure Municipal Museum of Art**

Address: Irifuneyama Koen, Saiwai-cho, Kure City  
 Tel: 0823-25-2007  
 Hours: 10:00am – 5:00pm  
 Closed: Tuesdays (except national holidays)  
 URL: <http://kure-bi.jp/>

**Special Exhibition**

■ **Fumiyo Kôno: "Kono Sekai no Katasumi ni" (in a corner of this world)**

Period: Sat., Jul. 23 – Thu., Nov. 3  
 Admission Fee: A-¥1,000 (¥800), U-¥600 (¥500), H & under-Free  
 ✧ Advance ticket prices shown in ( )

**Fukuyama Museum of Art**

Address: 2-4-3 Nishi-machi, Fukuyama City  
 Tel: 084-932-2345  
 Hours: 9:30am – 5:00pm ✧ Open until 7:00pm on Oct. 28, 29, Nov. 4 & 5  
 Closed: Mondays (except Sept. 19, 20, Oct. 10 & 11)  
 HP: <http://www.city.fukuyama.hiroshima.jp/site/fukuyama-museum/>

**Special Exhibition**

■ **The Genius of Michelangelo**

Period: Sun., Sept. 18 – Sun., Nov. 6  
 Admission Fee: A&U-¥1,200, H & under-Free

**Collection Exhibitions**

Admission Fee (all exhibitions):  
 A&U-¥300, H & under-Free

■ **Autumn Exhibition**

**The World of Masaaki Noda:  
 From New York to the World**

Period: Wed., Sept. 7 – Sun., Dec. 18

**Onomichi City Museum of Art**

Address: 17-19 Nishitsuchido-cho, Onomichi City  
 (Inside Senkoji Park)  
 Tel: 0848-23-2281  
 Hours: 9:00am – 5:00pm  
 Closed: Mondays except national holidays

**Special Exhibition**

■ **Sharaku and Toyokuni: *Yakusha-e* (prints of kabuki actors) and *Bijin-ga* (prints of beautiful women)**

Period: Sat., Aug. 20 – Sun., Oct. 2  
 Admission Fee: A-¥800, U&H-¥550  
 J & Under-Free

🍵 *Ukiyoe* exhibition

**Okuda Genso Sayume Art Museum**

Address: 453-6 Higashi Sakeya-machi, Miyoshi City  
 Tel: 0824-65-0010  
 Hours: 9:30am – 5:00pm  
 Open until 9:00pm on Sept. 15, 17 & Oct. 16  
 Closed: Sept. 14 & Oct. 12  
 URL: <http://www.genso-sayume.jp>

**Special Exhibition**

■ **Uemura Shoen: A Retrospective**

Period: Thurs., Sept. 15 – Thurs., Nov. 3  
 The 1<sup>st</sup> term: Sept. 15 – Oct. 11  
 The 2<sup>nd</sup> term: Oct. 13 – Nov. 3

Admission Fee:

A-¥1,000 (900), Pair tickets- ¥1,800  
 U&H-¥500 (¥400), J & under-Free  
 ✧ Advance ticket prices shown in ( )



Please feel free to contact the International Exchange Lounge at 082-247-9715.

E-mail: [golounge@pcf.city.hiroshima.jp](mailto:golounge@pcf.city.hiroshima.jp)

September 2016



# Hiroshima Toyo Carp

## Game Schedule 2016

The Toyo Carp (Hiroshima's professional baseball team) plays about 60 games at MAZDA Zoom-Zoom Stadium in Hiroshima every year.

### GAME SCHEDULE

#### SEPTEMBER

Thu., 1<sup>st</sup>, 6:00pm / vs. Yokohama DeNA Baystars  
 Tue., 6<sup>th</sup>, 6:00pm / vs. Chunichi Dragons  
 Wed., 7<sup>th</sup>, 6:00pm / vs. Chunichi Dragons  
 Thu., 8<sup>th</sup>, 6:00pm / vs. Chunichi Dragons  
 Thu., 15<sup>th</sup>, 6:00pm / vs. Yomiuri Giants  
 Fri., 16<sup>th</sup>, 6:00pm / vs. Chunichi Dragons  
 Sat., 17<sup>th</sup>, 1:30pm / vs. Chunichi Dragons  
 Thu., 22<sup>nd</sup>, 2:00pm / vs. Hanshin Tigers  
 Sat., 24<sup>th</sup>, 2:00pm / vs. Tokyo Yakult Swallows  
 Sun., 25<sup>th</sup>, 1:30pm / vs. Tokyo Yakult Swallows

### TICKET INFORMATION

#### Ticket Offices

##### ◆ MAZDA Zoom-Zoom Stadium Hiroshima

Tickets can be purchased at the ticket booths at the entrances of the stadium (closed on August 6).

##### Booth Opening Times

11:30am (days with night games) / 11:00am (days with day games)

11:00am – 4:00pm (days when there are no games)

##### ◆ CARPIO (6-7 Hacho-bori, Naka-ku)

OPEN: 10:00am – 4:00pm

TEL: 227-2222

##### ◆ Convenience Stores

Tickets are available at convenience stores such as Lawson, Seven-Eleven, FamilyMart and Sunkus.

### ACCESS

#### MAZDA Zoom-Zoom Stadium Hiroshima:

From JR Hiroshima Station, walking time to the stadium is 10 minutes.

### INQUIRIES

#### Hiroshima Toyo CARP

Tel. (082) 223-2141 Fax. (082) 502-1189 URL: <http://www.carp.co.jp/>



Please feel free to contact the International Exchange Lounge at 082-247-9715.

E-mail: [golounge@pcf.city.hiroshima.jp](mailto:golounge@pcf.city.hiroshima.jp)

September 2016



# Sanfrecce Hiroshima FC

## Game Schedule 2016

### GAME SCHEDULE Date / Kick Off / Game / Venue / Ticket Sales

#### 2016 J League 2<sup>nd</sup> Stage

Sat., September 10 / 7:00pm / vs. Omiya Ardija / EDION Stadium Hiroshima / Now on sale

Sat., October 1 / 7:00pm / vs. F.C. Tokyo / EDION Stadium Hiroshima / From Sat., September 3

Sat., October 29 / 7:00pm / vs. Avispa Fukuoka / EDION Stadium Hiroshima / From Sat., September 3

### TICKETS Seats / Advanced Tickets / At the Door

- ◆ Reserved Seats SS / ¥5,300 / ¥5,900
- ◆ Reserved Seats SA / ¥3,700 / ¥4,300
- ◆ Unreserved Seats Adults / ¥2,600 / ¥3,200
- ◆ Unreserved Seats Students (High School Students and under) / ¥1,000 / ¥1,500

### ACCESS

#### ◆ EDION Stadium Hiroshima (Hiroshima Big Arch)

Take the Astram-line bound for *Koiki-koen-mae* (広域公園前) and get off at the last station, *Koiki-koen -mae* (広域公園前).

From *Hondori* Station: One way fare - ¥480 Travel time - 35 min.

### TICKET OFFICES

- ◆ Sanfrecce Hiroshima Official Shop V-POINT (EDION *Honkan*, 8F / Tel. 248-3317 / 10:00am – 8:00pm / Closed on Mondays except national holidays)
- ◆ EDION Play Guide (*Honkan*, 8F) ◆ Fukuya (Hiroshima Station) (7F) ◆ Alpark Tenmaya (3F)
- ◆ Convenience Stores (FamilyMart, Seven Eleven, CircleKSunkus and Lawson)

### INQUIRIES

- ◆ Sanfrecce HIROSHIMA Tel. 233-3233 URL: <http://www.sanfrecce.co.jp>



Please feel free to contact the International Exchange Lounge at 082-247-9715.

E-mail: [golounge@pcf.city.hiroshima.jp](mailto:golounge@pcf.city.hiroshima.jp)

September 2016



# Hiroshima Dragonflies

## 2016 – 2017 B2 League

🏀 Hiroshima Dragonflies is a professional basketball team in Hiroshima.

### GAME SCHEDULE Date / Starting Time / Game / Venue

✧ Only the games scheduled to be held in Hiroshima are listed below. For away games, please check the Hiroshima Dragonflies' official website.

#### ★ SEPTEMBER

Fri, September 30 / 7:00pm / vs. Kumamoto Volters / Hiroshima Sun Plaza

#### ★ OCTOBER

Sat, October 1 / 2:00pm / vs. Kumamoto Volters / Hiroshima Sun Plaza

Sat, October 29 / 2:00pm / vs. Ehime Orange Vikings / Higashi Hiroshima Undo Koen Kaiikukan

Sun, October 30 / 1:00pm / vs. Ehime Orange Vikings / Higashi Hiroshima Undo Koen Kaiikukan

#### ★ NOVEMBER

Thurs., November 3 / 2:00pm / vs. Kagawa Five Arrows / Hiroshima Sun Plaza

Fri, November 4 / 7:00pm / vs. Kagawa Five Arrows / Hiroshima Sun Plaza

Sat, November 26 / 2:00pm / vs. Kagoshima Rebnise / Rose Arena

Sun, November 27 / 1:30pm / vs. Kagoshima Rebnise / Rose Arena

#### ★ DECEMBER

Sat, December 10 / 2:00pm / vs. Bambitious Nara / Hiroshima Sun Plaza

Sun, December 11 / 1:30pm / vs. Bambitious Nara / Hiroshima Sun Plaza

Fri, December 30 / 2:00pm / vs. Tokyo Excellence / Hiroshima Sun Plaza

Sat, December 31 / 1:30pm / vs. Tokyo Excellence / Hiroshima Sun Plaza

#### ★ JANUARY

Sat, January 28 / Not finalized / vs. F Eagles Nagoya / Kure City Sogo Taiikukan

Sun, January 29 / Not finalized / vs. F Eagles Nagoya / Kure City Sogo Taiikukan

#### ★ FEBRUARY

Sat, February 11 / Not finalized / vs. Nishinomiya Storks / Hiroshima Sun Plaza

Sun, February 12 / Not finalized / vs. Nishinomiya Storks / Hiroshima Sun Plaza

Sat, February 25 / Not finalized / vs. Earthfriends Tokyo Z / Hiroshima Sun Plaza

Sun, February 26 / Not finalized / vs. Earthfriends Tokyo Z / Hiroshima Sun Plaza

#### ★ MARCH

Sat, March 11 / Not finalized / vs. Iwate Big Bulls / Hiroshima Sun Plaza

Sun, March 12 / Not finalized / vs. Iwate Big Bulls / Hiroshima Sun Plaza

Fri, March 17 / Not finalized / vs. Kumamoto Volters / Hiroshima Sun Plaza

Sun, March 18 / Not finalized / vs. Kumamoto Volters / Hiroshima Sun Plaza

#### ★ APRIL

Sat, April 8 / Not finalized / vs. Kagoshima Rebnise / Hiroshima Sun Plaza

Sun, April 9 / Not finalized / vs. Kagoshima Rebnise / Hiroshima Sun Plaza

Sat, April 22 / Not finalized / vs. Kagawa Five Arrows / Hiroshima Sun Plaza

Sun, April 23 / Not finalized / vs. Kagawa Five Arrows / Hiroshima Sun Plaza

#### ★ MAY

Sat, May 6 / Not finalized / vs. Ehime Orange Vikings / Hiroshima Sun Plaza

Sun, May 7 / Not finalized / vs. Ehime Orange Vikings / Hiroshima Sun Plaza

Please feel free to contact the International Exchange Lounge at 082-247-9715.

E-mail: [golounge@pcf.city.hiroshima.jp](mailto:golounge@pcf.city.hiroshima.jp)

September 2016



**TICKETS (At the Door)**

- ◆ Reserved seats: ¥3,700 - ¥16,700
- ◆ Unreserved seats (1<sup>st</sup> floor seats): Adults-¥3,200    High school students-¥2,600  
Junior high & Elementary school students-¥2,100
- ◆ Unreserved seats (2<sup>nd</sup> floor seats): Adults-¥2,600    High school students-¥2,100  
Junior high & Elementary school students-¥1,500

**ACCESS**

- ◆ **Hiroshima Sun Plaza** (1-1 Shoko Center 3-chome, Nishi-ku, Hiroshima City)  
From JR Shin Inokuchi (新井口) Station or Shoko Center Iriguchi (商工センター入口) Streetcar Stop, walking time to destination is 5 minutes.
- ◆ **Higashi Hiroshima City Undo Koen Kaiikukan** (67-1 Taguchi, Saijo-cho, Higashi Hiroshima City)  
Take a bus from JR Saijo (西条) or JR Higashi Hiroshima (東広島) Station (JR Sanyo Line).
- ◆ **Rose Arena** (2-2 Midori-machi, Fukuyama City)  
Take a bus from JR Fukuyama (福山) Station (JR Sanyo Line).
- ◆ **Kure City Sogo Taiikukan** (7-1 Hiro Ohshingai 1-chome, Kure City)  
From JR Hiro (広島) Station (JR Kure Line), walking time to destination is 5 minutes.

**TICKET OFFICES**

- ◆ Hiroshima Dragonflies Club Shop (Hiroshima Marina Hop / Tel. 082-297-6825 / 10:00am – 8:00pm)  
(The club shop sells advanced tickets only.)
- ◆ Ticket PIA
- ◆ Convenience Stores (FamilyMart, Seven Eleven, CircleKSunkus and Lawson)
- ◆ Hiroshima Power House (Basketball pro Shop)
- ◆ Taiikusha (Sporting-goods store)

**INQUIRIES**

- ◆ Hiroshima Dragonflies    Tel. 082-297-6825 (Mon. – Fri., 10:00am – 5:30pm)  
HP: <http://hiroshimadragonflies.com>
- ◆ NBL (National Basketball League of Japan) Official HP: <http://www.nbl.or.jp>



Please feel free to contact the International Exchange Lounge at 082-247-9715.

E-mail: [golounge@pcf.city.hiroshima.jp](mailto:golounge@pcf.city.hiroshima.jp)

September 2016



# Seasonal Event Information

## September



★ Event schedules are subject to change.  
Please contact event organizers before you go.

### Events Held in Hiroshima City

**Every Wednesday until December 28, 2016 ★ September 7, 14, 21 & 28; October 5, 12, 19 & 26**

**Hiroshima Kagura** ひろしまけんみんぶんか ひろしまかぐら ていきこうえん  
広島県民文化センター「広島神楽」定期公演

**TIME:** 7:00pm – 8:45pm (The venue will open at 6:00pm.)

**VENUE:** Hiroshima Kenmin Bunka Center, Ote-machi, Naka-ku (located near Hondori Shopping Street)

**ACCESS:** From Kamiya-cho-nishi or Hondori Streetcar Stops, walking time to destination is 3 minutes.

**TICKETS:** ¥1,000 ◇ All non-reserved seats

◇ Tickets will be sold from 5:00pm on the performance date at the center.

There are no advance tickets.

**INQUIRIES:** Hiroshima Kenmin Bunka Center 082-245-2311

**Sat., July 2 – Sun., Sept. 25**

**Kinoshita Circus in Hiroshima** きのした ひろしまこうえん  
木下サーカス広島公演

**PLACE:** Special Venue at Hiroshima Nishi Hikojo Atochi (the site of Hiroshima Nishi Airport), Kanon Shin-machi, Nishi-ku

**ACCESS:** Take the No. 3 bus bound for Kanon Marina Hop and get off at Kanon Marina Hop. Walking time to destination: 3 minutes

#### TICKETS FOR NON-RESERVED SEATS

◆ Advance: High school students and up - ¥2,800

3 years old – Junior high school students - ¥1,800

◆ At the door: High school students and up - ¥3,200

3 years old – Junior high school students - ¥2,200

◇ Advance tickets are available at Ticket PIA, Lawson, Seven-Eleven, e+, Rakuten Ticket, etc.

◇ Reserved seats are also sold. Please check the official homepage (see below) for more information.

#### SCHEDULE:

	Mon., Tue. & Wed.	Fri. & Jul. 2	Sat.	Sun. & National holidays
10:20am	—	—	—	○
11:00am	○	—	○	—
1:00pm	—	○	—	○
1:40pm	○	—	○	—
3:40pm	—	○	—	○



**CLOSED:** Every Thursday (except Sept. 22) & Sept. 7, 21

**INQUIRIES:** Kinoshita Circus Hiroshima Office

082-234-0045

URL: <http://www.kinoshita-circus.co.jp/>

Please feel free to contact the International Exchange Lounge at 082-247-9715.

E-mail: [golounge@pcf.city.hiroshima.jp](mailto:golounge@pcf.city.hiroshima.jp)

September 2016



**Sun., September 4 & 18****Hiroshima Minato Marché** ひろしまみなとマルシェ**TIME:** 8:00am – 2:00pm**PLACE:** Open Space between East and West Terminal of Hiroshima Port, Minami-ku**ACCESS:** Take the No. 1, 3 or 5 streetcar bound for Hiroshima Port and get off at the last stop, Hiroshima Port.**INQUIRIES:** Hiroshima Minato Marché Office 082-255-6646

☐ You can buy and taste locally-grown fresh vegetables and other food products at the marché.

**Fri., September 9 – Sat., September 24****Hiroshima Oktoberfest 2016** ひろしま 広島オクトーバーフェスト 2016**TIME:** ◆ Mon. – Fri.: 3:00pm – 9:00pm ◆ Sat., Sun. & Sept. 19 & 22: 11:00am – 9:00pm**PLACE:** The Open Space of Former Municipal Baseball Stadium, Moto-machi, Naka-ku**ACCESS:** Get off at Kamiya-cho-nishi or Genbaku Dome-mae streetcar stop.**ADMISSION FEE:** Free ☆ Beer and food will be extra of charge.**INQUIREIS:** Hiroshima TV Event Information Center 082-249-1218 (Mon. – Fri., 10:00am – 6:00pm)

☐ You can enjoy German beer, food, music, etc. every day during the period.

☐ No drunk-driving. All pets except service dogs are not allowed to enter the venue. Event may be canceled if there is bad weather.

**Sun., September 11****Day of Sister & Friendship Cities Event: Volgograd Day**「<sup>しまい</sup>姉妹・<sup>ゆうこうとし</sup>友好都市の日」<sup>ひ</sup>記念イベント：<sup>きねん</sup>ボルゴグラードの日<sup>ひ</sup>**TIME:** 1:00pm – 3:30pm**PLACE:** *Hiroshima-shi Ryugakusei Kaikan* (International House), Nishi-kojin-machi, Minami-ku**ACCESS:** From JR Hiroshima Station, walking time to destination is 5 minutes.**ADMISSION FEE:** Free**PROGRAMS:** Exhibition to introduce Volgograd and Russia, tasting Russian food & drink, Russian music concert, etc.**INQUIRIES:** *Hiroshima Heiwa Bunka Center, Kokusai Koryu Kyoryoku Ka* (Hiroshima Peace Culture Foundation, International Relations and Cooperation Division)  
082-242-8879 E-mail: [internat@pcf.city.hiroshima.jp](mailto:internat@pcf.city.hiroshima.jp)**Thurs., September 15****Kangetsu (Moon-viewing) Tea Ceremony** <sup>かんげつちやかい</sup>観月茶会**TIME:** 4:00pm – 7:30pm ☆ The garden will open until 8:30pm on this day.**PLACE:** Shukkeien Garden**ACCESS:** Take a streetcar on the Hiroden Hakushima Line and get off at Shukkeien-mae. Walking time to destination: 5 minutes**FEE:** Fee for tea ceremony: *Honseki*-¥800, *Nodate*-¥600

☆ Admission fee for the garden is also required.

(	Adults-¥260, University & High school students-¥150	)
	Junior high & Elementary school students-¥100	

**INQUIRIES:** Shukkeien Garden 082-221-3620

Please feel free to contact the International Exchange Lounge at 082-247-9715.

E-mail: [golounge@pcf.city.hiroshima.jp](mailto:golounge@pcf.city.hiroshima.jp)

September 2016



**Mon., September 19****Keiro (Respect-For-The-Aged) Tea Ceremony**けいろうちゃかい  
敬老茶会**TIME:** 10:00am – 3:00pm**PLACE:** Shukkeien Garden**ACCESS:** Take a streetcar on the Hiroden Hakushima Line and get off at Shukkeien-mae. Walking time to destination: 5 minutes**FEE:** ¥700 for tea ceremony

✧ Admission fee for the garden is also required.

Adults-¥260, University & High school students-¥150 Junior high & Elementary school students-¥100
--

**INQUIRIES:** Shukkeien Garden 082-221-3620**Sat., October 29****2016 Autumn Sumo Tour in Hiroshima**おおずもうひろしまばしょ  
大相撲広島場所**TIME:** 8:00am – 3:00pm**PLACE:** Hiroshima Sun Plaza Hall, Nishi-ku**ACCESS:** From JR Shin Inokuchi Station (JR Sanyo Line) or Shoko Center Iriguchi Streetcar Stop (Hiroden Miyajima Line), walking time to destination is 5 minutes.**TICKETS:**1<sup>st</sup> Floor**Sold Out**

- “Tamari” Seats (ringside)

~~S\* - ¥14,000/person~~

A\* - ¥13,000/person

- Floor Seats

S\* - ¥48,000 for 4 seats    A - ¥40,000 for 4 seats

- Chair Seats

A - ¥12,000/person    B - ¥11,000/person    C - ¥10,000/person    D - ¥9,000/person

- Seats for Persons with Disabilities: ¥4,500/person

<Seats with “\*”> You can take a special sumo cushion home as a souvenir. (Cushions are also available for ¥1,000 (advance sale) and ¥1,500 (at the door)).

2<sup>nd</sup> Floor (chair seats)

- Reserved Seats: E - ¥8,000/person    F - ¥7,000/person    ■ Non-reserved Seats: ¥5,000/person

**RESERVATION & INQUIRIES:** 082-532-1701 (Mon. – Fri., 10:00am – 6:00pm)✧ You can order a *bento* (lunch box; ¥2,000) with tea as well.✧ You may not be allowed to bring any food or drink to the venue other than this *bento*.

<Notice> *Bento* reservations will be accepted between Oct. 19 and 27 at Musashi (a *bento* shop; Tel. 082-291-6340)

**Events Held on Miyajima****Thurs., September 1****Festival at Shinomiya Shrine (Tanomosan Festival)**しのみやじんじやさい  
四宮神社祭 (たのもさん)**TIME:** From 3:00pm onward**PLACE:** Shinomiya Shrine, Momiji-dani Park, Miyajima**ACCESS:** Get off at JR Miyajima-guchi Station (JR Sanyo Line) or the Miyajima Streetcar Stop (Hiroden Streetcar Miyajima Line), then take a ferry to Miyajima.

Please feel free to contact the International Exchange Lounge at 082-247-9715.

E-mail: [golounge@pcf.city.hiroshima.jp](mailto:golounge@pcf.city.hiroshima.jp)

September 2016



**PROGRAM:** Ceremony at Shinomiya Shrine: From 3:00pm onward

Boat floating from the front of Itsukushima Shrine: From 6:00pm onward

**INQUIRIES:** *Miyajima Kanko Kyokai* (Tourist Association) 0829-44-2011

▣ In ancient times, as Miyajima was believed to be an island of the gods, people were forbidden from digging and tilling the ground. People in Miyajima depended on farm products from the main land across the sea for a long time, and thus every year they float *Tanomosan* boats which are decorated with dolls, food and money to the main land to show their gratitude.

**Fri., September 9 – Sun., September 11**

## Miyajima Candle Festival, *Mantōe*

みやじま 宮島ローソクまつり まんとうえ 萬燈会

**TIME:** 6:00pm – 9:00pm

**PLACE:** Daishoin Temple, Miyajima

**ACCESS:** Get off at JR Miyajima-guchi Station (JR Sanyo Line) or Miyajima Streetcar Stop (Hiroden Streetcar Miyajima Line), then take a ferry to Miyajima.

**ADMISSION FEE:** Free

**INQUIRIES:** Daishoin Temple 0829-44-0111

▣ Many candles will be lit to console the souls of the deceased. A ritual will be held from 6:00pm on the 9<sup>th</sup> and concerts will be held for world peace from 7:00pm on the 9<sup>th</sup> and from 6:00pm on the 10<sup>th</sup> and the 11<sup>th</sup>.



## Events Held Outside of Hiroshima City

**Sat., Sun. & national holidays**

## Sake Brewery Opening

じょう か まちさいじょう ようこそ 醸 華町西条

**PLACE:** Sake Breweries, Higashihiroshima City

**ACCESS:** Get off at JR Saijo Station (JR Sanyo Line).

**FEE:** Free

**INQUIRIES:** *Saijo Sakagura-dori Kanko Annai-jo*

Tel. & Fax 082-421-2511 (10:00am – 4:00pm, closed on Mondays)

▣ Some sake breweries open to the public on Sat., Sun. & national holidays. Signboards with the words “ようこそ 醸 華町西条” (“*Yokoso Jokamachi Saijo*”) will be placed in front of the opened breweries.

**Wed., June 1 – Sat., September 10**

## Cormorant Fishing in Miyoshi

みよし うかい 三次の鵜飼

**TIME:** 7:45pm – 8:45pm (Cruising will be canceled if it rains heavily.)

**PLACE:** *Tokaichi Shinsui Koen* (Park), Miyoshi City

**ACCESS:** From JR Miyoshi Station (JR Geibi Line), walking time to destination is 15 minutes.

**PASSENGER FARE:** ☆ Please note that reservations are required.

- ◆ Sunday – Thursday: Junior high school students and up-¥2,500  
Elementary school students-¥1,250

☆ Passenger fare will be different on Friday and Saturday. Please ask the tourist association below for more information.

**RESERVATIONS & INQUIRIES:** *Miyoshi City Kanko Kyokai* (Tourist Association) 0824-63-9268

▣ Fishermen start out at night with lanterns and cormorants on small wooden boats. The birds are trained to catch *Ayu* (sweetfish). Very unique white-colored cormorants (a type of water fowl, usually with black feathers) were donated by Yaan in Szechuan, China, Miyoshi's friendship city, and can be seen only in Miyoshi.

Please feel free to contact the International Exchange Lounge at 082-247-9715.

E-mail: [golounge@pcf.city.hiroshima.jp](mailto:golounge@pcf.city.hiroshima.jp)

September 2016



**Sun., September 4****The 15<sup>th</sup> Hassaku-no-uma-dashi**だい かいとも つ はっさく うまだ  
第15回鞆の津 八朔の馬出し**TIME:** From 10:00am onward**PLACE:** Tomo-cho, Fukuyama City ☆ Parade will start from Nunakuma Shrine.**ACCESS:** Take the Tomotetsu Bus from JR Fukuyama Station (JR Sanyo Line) and get off at Tomo-no-ura (a 35 min. bus ride). Walking time to destination: 5 minutes**INQUIRIES:** Fukuyama-shi Tomo-no-ura Rekishi Minzoku Shiryō Kan 084-982-1121

☐ Hassaku-no-uma-dashi is a local folklore event where a white model horse, "Hassaku-no-uma" is taken around town to pray for the birth of a child.

☂ This will be canceled if it rains.

**Sat., September 10****Sakagura Walking Tour (Free)**さかぐら  
酒蔵のまち てくてくガイド**TIME:** Tour will start on an as-needed basis between 10:00am and 11:00am.**MEETING PLACE:** Saijo Sakagura-dori Kanko Annai-jo (Tourist Information Center), Higashihiroshima City**ACCESS:** Get off at JR Saijo Station (JR Sanyo Line).**PARTICIPATION FEE:** Free**INQUIRIES:** Saijo Sakagura-dori Kanko Annai-jo Tel. & Fax 082-421-2511

☐ A volunteer guide will show you Sakagura-dori (Sake Brewery Street). During the tour you will be able to taste sake and the purified water that is used to make it.

☐ A regular guided tour (fee-based) is also held every day except on the 10<sup>th</sup>. An English speaking guide is available. Please contact the Saijo Sakagura-dori Tourist Information Center in advance.**Sat., September 10****The 69<sup>th</sup> Nishi-chugoku Kagura Performance**だい かいにしちゅうごくせんばつか ぐら きょうえんたいかい  
第69回西中国選抜神楽競演大会**TIME:** ◆ Distribution of numbered tickets: From 8:00am onward

◆ Opening of venue: 10:00am ◆ Opening ceremony: From 10:40am onward

◆ Kagura performance: 11:00am – 8:50pm

**PLACE:** Kake Taiiku-kan (Gymnasium), Akiota-cho**ACCESS:** ① From the Togouchi I.C. on the Chugoku Expressway, driving time to destination is 10 minutes.

② Take a bus bound for Sandankyo (Hiroden Sandankyo Line) from Hiroshima Bus Center (Sogo Hiroshima Department Store, 3F) and get off at Kake Chuo. Walking time to destination: 10 minutes

**TICKET:** Advance-¥2,500 At the door-¥3,000 At the door (after 4:50pm)-¥2,000

☆ Junior high school students and under-Free

☆ Advanced tickets are available at Hiroshima Yume Plaza on Hondori Shopping Street, Lawson Ticket.

**INQUIRIES:** Akiota-cho Kanko Kyokai (Tourist Association) 0826-28-1800**Sat., September 10****Hatsukaichi-shi Nihyaku-hatsuka (220-day) Honen Citizens' Festival****(A Harvest Festival)**はつ か いち し に ひゃくはつ か ほうねん し みんさい  
廿日市市二百廿日豊年市民祭**TIME:** From 2:00pm onward**PLACE:** Hatsukaichi-shi Chuo Shimin Center & Shopping Street, Hatsukaichi City**ACCESS:** From JR Hatsukaichi Station (JR Sanyo Line), walking time to destination is 5 minutes.**INQUIRIES:** Hatsukaichi Shoko Kaigisho 0829-20-0021

Please feel free to contact the International Exchange Lounge at 082-247-9715.

E-mail: golounge@pcf.city.hiroshima.jp

September 2016



**Sat., September 17 – Sun., October 23****Autumn Festival at Bihoku Kyuryo Park**

こくえいびほくきゅうりょうこうえん あき 国営備北丘陵公園「秋まつり」

**TIME:** 9:00am – 5:00pm ☆ Entry allowed up to 4:00pm.**PLACE:** Kokuei Bihoku Kyuryo Koen, Shobara City**ACCESS:**

- ① From JR Nanatsuka Station (JR Geibi Line), walking time to destination is 20 minutes.
- ② From JR Bingo Shobara Station (JR Geibi Line), driving time to destination by taxi is 10 minutes.
- ③ From Shobara I.C. on the Chugoku Expressway, driving time to destination is 5 – 10 minutes.
- ④ From Miyoshi Higashi I.C. on the Chugoku Odan Expressway, driving time to destination is 15 minutes.

**ADMISSION FEE:** Adults-¥410 Children-¥80

Senior (65 years and up)-¥210 (Identification showing your birth date is required.)

**INQUIRIES:** Bihoku Koen Kanri Center 0824-72-7000 HP: <http://www.bihoku-park.go.jp/>**Sat., September 17 & Sun., September 18****Autumn Festival at Isonomiya Hachiman Shrine**

いそのみやはちまんじんじゃ あき れいたいさい 磯宮八幡神社 秋の例大祭

**PLACE:** Isonomiya Hachiman Shrine, Takehara City**ACCESS:** From JR Takehara Station (JR Kure Line), walking time to destination is 10 minutes.**INQUIRIES:** Isonomiya Hachiman Shrine 0846-22-2529

☐ This is a traditional festival in Takehara. *Taiko* (traditional Japanese drums), *tengu* (long-nosed goblin), *oni* (devil) & *shishi-gashira* (lion mask) will walk around the town.

**Sat., September 17 & Sun., September 18****Autumn Festival at Murohara Shrine & Ebisu Festival**

むろはらじんじやれいたいさい まつ 室原神社例大祭・えびす祭り

**TIME:** Noon – 5:00pm**PLACE:** Murohara Shrine & Ebisu Shrine, Kure City**ACCESS:** Take a bus bound for Okitomo Tenmangu from JR Hiro Station (JR Kure Line) and get off at Toyohama-shisho. Walking time to destination: 5 minutes

☆ Please mind that bus service is hourly.

**INQUIRIES:** Murohara Shrine 0823-68-2034

☐ Toyohara-cho, Kure City is a fishery town. This is an annual festival to pray for good catches of fish and maritime safety. Traditional rowing techniques (*Kaiden-ma* and *Oshi-bune*) will be demonstrated at the festival.

**Sun., September 18****The 23<sup>rd</sup> Getalympics 2016**

だい かい 第23回ゲタリンピック 2016

**TIME:** 10:00am – 6:00pm**PLACE:** Around JR Matsunaga Station (JR Sanyo Line) and Seibu Shimin Center, Fukuyama City**ACCESS:** Get off at JR Matsunaga Station (JR Sanyo Line).**INQUIRIES:** Getalympic Executive Committee 084-933-2151 HP: <http://getalypic.com/>

☐ The town of Matsunaga is known as Japan's top site for making wooden clogs which are called *geta*. There will be various stage shows, games, and unique races with *geta* during the event.



Please feel free to contact the International Exchange Lounge at 082-247-9715.

E-mail: [golounge@pcf.city.hiroshima.jp](mailto:golounge@pcf.city.hiroshima.jp)

September 2016



**Sun., September 18 & Mon., September 19****The 7<sup>th</sup> Bihoku Yoitokoro Festival (Sake Festival)**だい かい び ほうよ ところ  
第7回備北酔い処まつり**TIME:** 10:00am – 4:00pm**PLACE:** Hiroshima Miyoshi Winery, Miyoshi City**ACCESS:** Take a bus from JR Miyoshi Station (JR Geibi Line) and get off at Hiroshima Miyoshi Winery.**SAKE TICKETS:** ¥1,200**INQUIRIES:** Bihoku Kanko Network Kyogikai Office 0824-44-3855

☐ You can taste wine and sake made with fresh water in the Bihoku Area (northeastern area of Hiroshima Prefecture). Taiko (traditional Japanese drums) and kagura performances will also be held.

**Tue., September 20****Hatsuka-no-ichi Market**はつか いち  
廿日の市**TIME:** 8:30am – 10:30am**PLACE:** Shingu Chuo Koen (Park), Hatsukaichi City**ACCESS:** From Hatsukaichi Shiyakusho-mae (Hiroden Streetcar Miyajima Line), walking time to destination is 3 minutes.**INQUIRIES:** Hatsukaichi Kanko Kyokai (Tourist Association) 0829-31-5656**Thurs., September 22****The 82<sup>nd</sup> Fude (Calligraphy Brush) Festival**だい かいふで  
第82回筆まつり**TIME:** 10:00am – 5:00pm**PLACE:** Around the Studio Fude-no Sato Kobo, Sakakiyama Shrine & Kumano Chugakko (Junior High School), Kumano-cho**ACCESS:** Take a bus from Hiroshima Bus Center (Sogo Hiroshima Department Store, 3F) or JR Yano Station (JR Kure Line) and get off at Kumano Eigyosho. Driving time to destination: 7 minutes.**INQUIRIES:** Fude Matsuri Executive Committee 082-854-0216 HP: <http://www.fudematsuri.jp/>

☐ Kumano-cho is Japan's greatest producer of fude, brushes that are used to write calligraphy and apply make-up. There will be fude sold at discounted prices, calligraphy demonstrations, etc.

**Sat., September 24****The 24<sup>th</sup> Otokunchi Fire Festival**だい かいおとくんちほのお さいてん  
第24回乙九日炎の祭典**TIME:** 3:30pm – 9:30pm**PLACE:** Around Kameyama Hachiman Shrine, Kita-hiroshima-cho**ACCESS:** From Togochi I.C. on the Chugoku Expressway, driving time to destination is 40 minutes.**INQUIRIES:** Kita-hiroshima-cho Kanko Kyokai, Geihoku Shibu (Tourist Association) 0826-35-0888**Sat., September 24 & Sun., September 25**

👏 Application period to participate in the event has already concluded. 👏

**The 5<sup>th</sup> Costume Festival in Onomichi**だい かいぜんこくか そうたいかい  
第5回全国仮装大会 in おのみち**TIME:** ♦ Sept. 24: Noon – 7:00pm ♦ Sept. 25: 11:00am – 4:00pm**PLACE:** Around Hondori Shopping Street, Kokaido, etc., Onomichi City**ACCESS:** From JR Onomichi Station (JR Sanyo Line), walking time to destination is 2 minutes.**CONTENTS:** Sept. 24: Pre Event: Costume Party

Sept. 25: Main Event: Costume Parade (11:00am – 4:00pm)

**INQUIRIES:** Executive Committee (inside Onomichi Tourist Association) 0848-37-9736

Please feel free to contact the International Exchange Lounge at 082-247-9715.

E-mail: [golounge@pcf.city.hiroshima.jp](mailto:golounge@pcf.city.hiroshima.jp)

September 2016



**Sat., September 24 & Sun., September 25****Midori Kagura Performance 2016** みどりかぐら 美土里神楽まつり 2016**TIME:** Sept. 24: From 1:00pm onward (The venue will open at 11:00am.)

Sept. 25: From 1:30pm onward (The venue will open at 9:00am.)

**PLACE:** Kagura Dome, Kagura Monzen Toji-mura, Midori-cho, Akitakata City**ACCESS:** ① Take an express bus bound for Miyoshi/Shobara from Hiroshima Bus Center (Sogo Hiroshima Department Store, 3F) and get off at Midori. Then take a taxi or shuttle bus to Kagura Monzen Toji-mura (reservations are required).

② From Takata I.C. on the Chugoku Expressway, driving time to destination is 7 minutes.

**TICKETS:**

		One Day Ticket	Two Days Ticket
Reserved box seats for 6 people		¥10,000	¥16,000
Reserved chair seats	Adults	¥1,500	¥2,500
	*Children	¥700	¥1,000
Non-reserved seats (advance tickets)	Adults		¥2,000
	*Children		¥800
Non-reserved seats (at the door)	Adults	¥1,200	
	*Children	¥600	

\*Children = Junior high and Elementary school students

✧ Advance tickets for non-reserved seats are available at *Hiroshima Yume Plaza* on Hodori Shopping Street.✧ All kinds of tickets are sold at *Kagura Monzen Toji-mura*. Please inquire at *Toji-mura* for more information.**INQUIRIES:** Kagura Monzen Toji-mura 0826-54-0888**Sun., October 2 (Tentative)****Yabusame at Hori Hachiman Shrine** ほりはちまんじんじやぶさめしんじ 堀八幡神社流鏑馬神事**TIME:** ♦ Ritual is from noon onward ♦ *Yabusame* Performance is from 1:00pm onward**PLACE:** Hori Hachiman Shrine & Tonoga *Yabusame* Horse Riding Ground, Akiota-cho**ACCESS:** ① Take a bus from JR Kabe Station (JR Kabe Line) and get off at Togochi I.C. Bus Center. Driving time to destination: 5 minutes

② From Togochi I.C. on the Chugoku Expressway, driving time to destination is 5 minutes.

**INQUIRIES:** Hori Hachiman Shrine 0826-22-0651*Akiota-cho Kanko Kyokai* (Tourist Association) 0826-28-1800▣ *Yabusame* is the traditional art of shooting arrows from horseback. It is a rare opportunity to see *yabusame* in Hiroshima Prefecture.**Sat., October 8 & Sun., October 9****2016 Sake Matsuri** さけ 2016 酒まつり**TIME:** ♦ Oct. 8: 10:00am – 8:00pm ♦ Oct. 9: 10:00am – 5:00pm**PLACE:** Around JR Saijo Station, Higashi Hiroshima City**ACCESS:** Get off at JR Saijo Station (JR Sanyo Line).**INQUIRIES:** *Higashi Hiroshima-shi Kanko Kyokai* (Tourist Association) 082-420-0330URL: <http://sakematsuri.com/>

Please feel free to contact the International Exchange Lounge at 082-247-9715.

E-mail: [golounge@pcf.city.hiroshima.jp](mailto:golounge@pcf.city.hiroshima.jp)

September 2016



☺ **Sake Hiroba** ❖ You can taste about 1,000 kinds of *sake* from around Japan.

**TIME:** ♦ Oct. 8: 10:00am – 8:00pm ♦ Oct. 9: 10:00am – 5:00pm

✧ Entry is allowed up to 1 hour prior to closing.

**ADMISSION TICKETS:** ¥2,100 (Advance tickets will also be sold.)

☐ Remember, drunk-driving is strictly prohibited!

**Sun., October 9**

## Nagao Shrine Yudate Kagura Performance

ながおじんじゃ ゆだてかぐら  
長尾神社湯立神楽

**TIME:** From 1:00pm onward

**PLACE:** Nagao Shrine, Akiota-cho

**ACCESS:** ① Take a bus bound for Sandankyo from Hiroshima Bus Center (Sogo Hiroshima Department Store, 3F) and get off at Kake-chuo.

② From Togochi I.C. on the Chugoku Expressway, driving time to destination is 10 minutes.

**INQUIRIES:** Nagao Shrine 0826-22-0311

Akiota-cho Kanko Kyokai (Tourist Association) 0826-28-1800

**Sat., November 26 & Sun., November 27**

## The 9<sup>th</sup> 2-Day Hiroshima Peace Walk in Hatsukaichi

だい かい  
第9回ピースウォークひろしまツーデー in はつかいち  
廿日市

**COURSE:** ♦ Nov. 26: Miyajima Course

♦ Nov. 27: A-bomb Dome and south area of Hiroshima City Course

**STARTING PLACE:** Shingu Chuo Koen (park), Hatsukaihi City

**ACCESS:** From Hatsukaichi Shiyakusho-mae Streetcar Stop (Hiroden Miyajima Line), walking time to destination is 4 minutes.

**PARTICIPATION FEE:**

★ Fee for 2-Day ★

♦ Advance application: Adults-¥2,000 Senior & Junior high school students-¥1,000  
Elementary school students and under-Free

♦ Application on the day of: Adults-¥2,100 Senior & Junior high school students-¥1,100  
Elementary school students and under-Free

★ Fee for 1-Day ★

♦ Advance application: Adults-¥1,000 Senior & Junior high school students-¥500  
Elementary school students and under-Free

♦ Application on the day of: Adults-¥1,100 Senior & Junior high school students-¥600  
Elementary school students and under-Free

**HOW TO APPLY:** Fill out prescribed application form and make a payment at a Japan Post Bank (ゆうちょ銀行) by Thurs., November 10. The receipt you receive at the post bank will be the participation certificate on the event day, so please make sure to keep and bring it on the walking day.

**INQUIRIES:** Executive Committee 082-218-0511 or 090-1185-8332

E-mail: hwa.hiroshima@gmail.com

☐ Elementary school students and under should be accompanied by their guardians. People who need care should also be accompanied by their escorts.

☐ Please bring lunch with you.



Please feel free to contact the International Exchange Lounge at 082-247-9715.

E-mail: golounge@pcf.city.hiroshima.jp

September 2016



## Events Held in Yamaguchi Prefecture

Wed., June 1 – Sat., September 10

### Cormorant Fishing in Iwakuni

きんたいきょう うかい  
錦帯橋の鵜飼

**TIME:** 7:00pm – 9:00pm

**PLACE:** Nishiki-gawa River & Kintaikyo Bridge, Iwakuni City

**ACCESS:** Get off at JR Iwakuni Station (JR Sanyo Line) and take a bus bound for Kintaikyo Bridge. Get off at Kintaikyo (a 20 min. bus ride).

**PASSENGER FARE:** Adults-¥2,000 Children-¥1,000

◇ The fare will be temporarily changed on August 6, the day of the fireworks festival.

**RESERVATIONS & INQUIRIES:** *Kintaikyo Ukai Office* 0827-28-2877

▣ Originating about 400 years ago, cormorant fishing under lit lanterns is a summer tradition in Iwakuni.

## Other Event

### Setouchi Triennale 2016

せとうちこくさいげいじゆつさい  
瀬戸内国際芸術祭2016

**PERIOD:** ❶ ~~Spring:~~ Sun., March 20 – Sun., April 17

❷ **Summer:** Mon., July 18 – Sun., September 4

❸ **Autumn:** Sat., October 8 – Sun., November 6

Finished

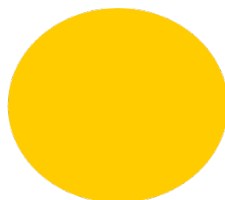
**PLACE:** Around the 12 Islands of the Seto Inland Sea (below), Takamatsu and Uno Naoshima

(Teshima, Megijima, Ogijima, Shodoshima, Oshima, Inujima, Shamijima (spring only),  
Honjima (autumn only), Takamijima (autumn only), Awashima (autumn only),  
Ibukijima (autumn only), Takamatsu & Uno Port)

**OFFICIAL URL:** <http://setouchi-artfest.jp/en/>

◇ Please see this official homepage for more information such as ticket information and access to each island.

▣ This year is also the triennial international art festival. Please take this opportunity to enjoy art and the small islands of the Seto Inland Sea.

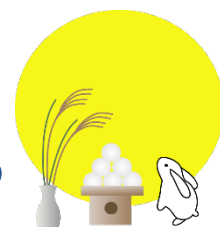


Please feel free to contact the International Exchange Lounge at 082-247-9715.

E-mail: [golounge@pcf.city.hiroshima.jp](mailto:golounge@pcf.city.hiroshima.jp)

September 2016





# Municipal Facilities







## Facilities

(Address / Telephone / Open Hours / Closed / Admission Fee / URL)  
Admission is generally allowed up to 30 min. prior to closing.

## Hiroshima City Forest Park & Insectarium

(173 Fujigamaru, Fukuda-cho, Higashi-ku 732-0036 / Forest Park: 899-8241, Insectarium: 899-8964 / Forest Park: 9:00am - 4:30pm; Insectarium: 9:00am - 4:30pm / Closed: Forest Park - Wednesdays; Insectarium - Wednesdays / Admission Fees for the Insectarium: Adults-¥510, Seniors & High school students-¥170, Junior high & Elementary school students-Free (Free admission for high school students on Saturdays (except on national holidays and during school holidays)) / Forest Park: <http://www.daiichib-shitei.com/forest/> Insectarium: <http://www.hiro-kon.jp/>)

## Events at the Forest Park

-  **Make & Play with a Menko** / Sun., Sept. 4 / ① 10:00am - noon ② 1:00pm - 3:00pm / *Kyukei-jo, Shibafu Hiroba* / Fee: Free  
✧ Participants will be accepted on the day of.  
☉ *Menko* is a classic children's game in Japan.
-  **Nature Game** / Sun., Sept. 4 / 1:00pm - 3:00pm / *Shibafu Hiroba* / Fee: Free  
✧ The first 50 participants will be accepted from 12:30pm on the day of.
-  **Lecture on the Grass Whistle** / Sun., Sept. 18 / 1:00pm - 3:00pm / *Kyukei-jo, Shibafu Hiroba* / Fee: Free
-  **Ennichi** / Sun., Sept. 18 & Mon., Sept. 19 / 9:30am - 2:00pm / *Chuo Hiroba* & around *Jabu Jabu River* / Participation Fee: ¥50/ticket ✧ The first 500 participants will be accepted for each day.  
☉ Various stalls will be set up nearby.  
✧ This will be canceled if it rains.
-  **Craft Workshop: Taketombo** (T-shaped flying bamboo toy) / Thurs., Sept. 22 / 10:00am - noon / *Chuo Hiroba* / For elementary school students (you can join with your brothers and sisters) and their guardians / Fee: Free  
✧ The first 20 groups will be accepted from 9:30am on the day of.
-  **Ground Golf Experience** / Sun., Sept. 25 / 10:00am - noon / *Tamokuteki Hiroba* / Participation Fee: Free  
**To APPLY:** Send an *ofuku-hagaki* (return postcard) with applicants' names, address, telephone number, age and the event name **グラウンドゴルフをやってみよう** ("Ground

*golf wo yatte miyou*") to the park postmarked by Thurs., Sept. 15. 50 postcards will be selected at random by a drawing of names.  
✧ This will be canceled if it rains.

## Events at the Insectarium



-  **Let's Find Insects!** / Sun., Sept. 25 / ① 10:00am ② 11:10am / Around the Insectarium / For preschoolers and their guardians /  
**To APPLY:** Send an *ofuku-hagaki* (return postcard) with applicants' names, address, telephone number, age, event time you wish to attend (① or ②) and the event name **むしむしみつけ隊「虫みつけ」** ("Mushi mushi miKke tai: Mushi mikke") to the park postmarked by Thurs., Sept. 8. 30 postcards will be selected at random by a drawing of names for each time slot.
-  **Autumn Exhibition: Chirping Autumn Insects** / Sat., Sept. 10 - Sun., Sept. 25
-  **Saturday Insect Lecture** / 1:30pm - 2:30pm / Participants will be accepted on the day of. (except ④&⑤)  
① **Chirping Insects** / Sat., Sept. 10  
② **Secrets of Beehives** / Sat., Oct. 1  
③ **Mantis Eggs** / Sat., Nov. 12  
④ **Making a Beetle and Stag Beetle Specimen** / Sat., Dec. 17  
✧ Advance reservations are required.  
⑤ **Owning Beetle** / Sat., Mar. 4, 2017  
✧ Advance reservations are required.

## The Hiroshima Botanical Garden


(3-495 Kurashige, Saeki-ku 731-5156 / 922-3600 / 9:00am - 4:30pm / Closed on Fridays / Adults-¥510, Seniors & High school students- ¥170, Junior high and Elementary school students-Free (Free admission for high school students on Saturdays (except on national holidays and during school holidays)) / <http://www.hiroshima-bot.jp/>)

<Exhibitions> Exhibitions will close at 3:30pm on their last day.

## Tenji Onshitsu (hothouse exhibitions)

-  **Morning Glories** / Sat., Sept. 3 - Sun. Sept. 11
-  **Medicinal Plants** / Sat., Sept. 17 - Thurs. Sept. 29

## Okugai Tenji-jo (outdoor exhibitions)

-  **Autumn Wild Flowers** / Sat., Sept. 17 - Thurs. Sept. 22

Please feel free to contact the International Exchange Lounge at 082-247-9715.

E-mail: [golounge@pcf.city.hiroshima.jp](mailto:golounge@pcf.city.hiroshima.jp)

September 2016



## &lt;Events&gt;

- 🌸 **Night Pageant** / Sept. 10 (Sat.), 11 (Sun), 17 (Sat.), 18 (Sun.), 24 (Sat.) & 25 (Sun.) / Open until 9:00pm ✧ Entry allowed up to 8:30pm.
  - ✧ Various events such as concerts will be held.
  - ✧ Shuttle bus service between JR Itsukaichi Station and the Botanical Garden will be available on these event days.
- 🌸 **Junior Project** / Sun., Sept. 11 / ① 11:00am - noon ② 1:30pm - 2:30pm

## &lt;Lectures&gt;

- 🌸 **Morning Glories** / Sun., Sept. 4 / 9:30am - 10:30am
- 🌸 **Autumn Wild Flowers** / Sun., Sept. 18 / 1:30pm - 2:30pm

🏛️ **Children's Museum of Culture and Science**

(5-83 Moto-machi, Naka-ku 730-0011 / 222-5346 / 9:00am - 5:00pm / Closed on Sept. 1, 5 - 9, 12, 20, 21, 23 & 26 / Admission fee for planetarium is required (see below). / <http://www.pyonta.city.hiroshima.jp/>)

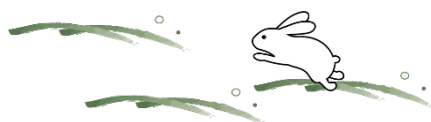
🌟 **The Planetarium will be closed from Sun., October 22, 2016 to Tue., January 3, 2017 due to renovations.**

★ **Planetarium** ★

- 👉 **Admission Fee for Planetarium:**
  - Adults-¥510, Seniors & High school students-¥250, Junior high & Elementary school students-Free
  - ✧ Free admission for high school students on Saturdays (except on most national holidays and during school holidays).
  - Admission fee for adults is ¥250 on the second Saturday of every month (except on most national holidays and during school holidays).

- ☆ **Planetarium Program: Pyonta vs Hatenaman** / Until Fri., Oct. 21 / ♦ Weekdays: 11:00am
  - ♦ Sat., Sun., national holidays: ① 10:00am ② 3:00pm / Adults-¥510, Seniors & High school students-¥250

- ☆ **Planetarium Constellation Projection**
  - ♦ **Aurora** / Thurs., Jul. 21 - Sun., Jan. 15 (except from Sun., Oct. 22, 2016 to Tue., Jan. 3, 2017) / ♦ Weekdays: 2:00pm
  - ♦ Sat., Sun., national holidays: ① 11:00am ② 2:00pm / Adults-¥510, Seniors & High school students-¥250



- ☆ **Full Dome Screen Film: Walking with a Dinosaur** / Until Fri., Oct. 21 / ♦ Weekdays: 3:00pm ♦ Sat., Sun., national holidays: 1:00pm / Adults-¥510, Seniors & High school students- ¥250

- ☆ **Refretarium: Autumn Program** / Sat., Sept. 10 - Fri., Oct. 21 (except Sundays) /
  - ♦ Weekdays: 1:00pm ♦ Sat., national holidays: 4:00pm / High school students and up-¥200
  - ✧ This is a program to refresh your mind and body during lunch time while watching the starry sky and listening to music. Although the main target of this program is adults, anyone who wishes to rejuvenate themselves is welcome.

☆ **Starry Sky Tour:**

- ♦ **Tonight's Starry Sky & Jupiter Exploration** / Sundays until Sun., Oct. 16 / 4:00pm / Adults-¥510, Seniors & High school students-¥250

- ☆ **Higashi-Hiroshima Observatory Tour** / Sat., Oct. 8 / 6:00pm / Higashi-Hiroshima Observatory, Hiroshima Astrophysical Science Center, Hiroshima University / For elementary school students and up / Fee: ¥50 for insurance

**To APPLY:** Send an *ofuku-hagaki* (return postcard) with necessary information (see below) to the museum (Address: 5-83 Moto-machi, Naka-ku, Hiroshima City 730-0011) postmarked by Sat., September 24. 70 people will be selected at random by a drawing of names.

★ **Please write the following information on your postcard.** ★

- ♦ **往信 (oshin)** おうしん Address/Front Side:
  - Your name, postal code, address, telephone number and age. If you apply as a group (up to 5 people), please write all participants' names and age as well.
- ♦ **返信 (henshin)** へんしん Inside/Back of Card:
  - Your name, postal code and address.

- ✧ Please go to the observatory directly on the event day.
- ✧ There is no public transportation to the observatory, so please come by your car or a taxi.
- ✧ Junior high and elementary school students should be accompanied by their guardians.

★ **Events** ★

- ☆ **Violin, Harp & Oboe Concert** / Sun., Sept. 4 /
  - ① Noon - 12:30pm ② 2:30pm - 3:00pm (Doors will open at 11:45am for ① & at 2:15pm for ②.)
  - / Apollo Hall (250 seats) / Free admission

Please feel free to contact the International Exchange Lounge at 082-247-9715.

E-mail: [golounge@pcf.city.hiroshima.jp](mailto:golounge@pcf.city.hiroshima.jp)

September 2016



- ☆ **Craft Workshops** / Sept. 11 (Sun.), 17 (Sat.) & 25 (Sun.) / 1:00pm - 3:30pm / For children under elementary school entry age, elementary school students (1<sup>st</sup> - 3<sup>rd</sup> grade) and their guardians / 3F, *Kosaku-shitsu* (Craft Room) / Fee: ¥30 for materials
  - ◇ Each day's program is different. For more information, please contact the museum.
- ☆ **Science Show** / ① 1:30pm - 2:00pm ② 3:00pm - 3:30pm / 1F, Science Studio / Fee: Free
  - ◆ **Explosion Experiments** / Sat., Sept. 3
  - ◆ **The World of 196 Degrees below Zero** / Sat., Sept. 17

📌 The events listed below require advance applications.

**To APPLY:** Send an *ofuku-hagaki* (return postcard) to the museum, postmarked by each event's application deadline with the following information: applicants' names, address, telephone number, school year and the event name and time you wish to attend.

### Craft Workshops

- ◆ **Make a Lantern with Tree Branches** / 木の枝のあかり ("Ki no eda no akari") / Sat., Sept. 17 / 1:30pm - 4:00pm / For elementary school students / Fee: ¥600 / Closing date for applications: Sat., Sept. 3
  - ◇ 20 people will be selected at random by a drawing of names.
- ◆ **Make an Animal-shaped Puppet with Twigs** / あやつ にんぎょう 操り人形 ("Ayatsuri ningyo") / Sun., Sept. 18 / 9:30am - noon / For elementary school students / Fee: ¥500 / Closing date for applications: Sun., Sept. 4
  - ◇ 20 people will be selected at random by a drawing of names.
- ◆ **Pastel Art** / パステルアート / Sat., Oct. 15 / ① 9:30am - noon ② 1:30pm - 4:00pm / For elementary school students / Fee: ¥300 / Closing date for applications: Sat., Oct. 1
  - ◇ 20 people will be selected for each workshop at random by a drawing of names.

📍 **Hiroshima City Asa Zoological Park**  
(Asa-cho Dobutsuen, Asakita-ku 731-3355 / 838-1111 / 9:00am - 4:30pm / Closed on Thursdays (except Sept. 22) / Adults-¥510, Seniors & High school students- ¥170, Junior high & Elementary school students-Free / <http://www.asazoo.jp/>)

🐠 **Asa Zoo & "Miyaji-marine" (Miyajima Public Aquarium) Collaborating Event 2016: Stamp Rally** / Sat., Jul. 16 - Sun., Nov. 27

- 🐘 **Exhibition: Wild Animals Close to Us** / Sat., Jul. 30 - Sun., Oct. 23
- 🦉 **Night Safari** / Sept. 3 (Sat.) & 4 (Sun.) / The zoo will be open until 9:00pm on these days. (Entry allowed up to 8:30pm.)
  - 🚌 Shuttle bus service between zoo and *Astramline* Kamiyasu Station will be available from sundown to 9:00pm on the Night Safari event days.
- ★ **Events Related to the Night Safari** ★
  - **Kagura Performance** / Sat., Sept. 3 / 6:00pm - 7:30pm / *Picnic Hiroba*
  - **Animal Picture-book Reading** / Sun., Sept. 4 / 7:30pm - 8:00pm
- 🦉 **Backyard Guide Tour** / Sat., Sept. 3, 10, 17 & 24 / ① 11:00am (except Sept. 24) ② 1:30pm / Please gather near the entrance at 9:00am on each activity day. The first 10 - 40 people can participate. The number of participants will differ depending on where you visit. We will explore a different place on each trip.
- 🦉 **Special Event for the 45<sup>th</sup> Anniversary of Asa Zoo** / Sun., Sept. 4 / 11:30am - noon
- 🦉 **Disaster Prevention Event** / Sun., Sept. 11 / 11:00am - 4:00pm / *Yagai Stage, Dobutsu Kagakukan*
- 🦉 **Celebration for Animals with Long Lives** / Mon., Sept. 19 / 11:00am - noon
  - 👉 Celebrate the animals that live long lives with fruits etc.
- 🦉 **World Rhino Day: Learn More about Black Rhinoceros** / Thurs., Sept. 22 / ① 11:00am - noon ② 1:00pm - 2:00pm
- 🦉 **Giant Salamander Facility Tour** / Sat., Sept. 24 / 11:00am - 11:45am ◇ Reservations will be accepted from 9:00am at the main entrance until 20 spots are filled.
- 🦉 **Recycle Flea Market** / Sat., Sept. 24 & Sun., Sept. 25 / 10:00am - 4:00pm
  - ◇ This will be canceled if it rains.

🚗 **Numaji Transportation Museum (Hiroshima City Transportation Museum)**  
(2-12-2 Chorakuji, Asaminami-ku 731-0143 / 878-6211 / 9:00am - 5:00pm / Closed: Sept. 5 - 8, 12, 20, 21 & 26 / Adults-¥510, Seniors & High school students-¥250, Junior high school students or younger-Free / <http://www.vehicle.city.hiroshima.jp>)

- 🚗 **Science Show: Experiments with Air** / Sat., Sept. 10 & Sun., Sept. 11 / ① 11:30am - 11:50am ② 1:30pm - 1:50pm ③ 2:30pm - 2:50pm / 1F, *Tamokuteki Hall* / Fee: Free
- 🚗 **Exhibition on a Streetcar Exposed to the A-Bomb** / Sat., Sept. 17 / ① 11:00am - noon ② 1:30pm - 3:00pm / *Okugai Hiroba* (outdoor open space) / Fee: Free

Please feel free to contact the International Exchange Lounge at 082-247-9715.

E-mail: [golounge@pcf.city.hiroshima.jp](mailto:golounge@pcf.city.hiroshima.jp)

September 2016



✧ Exhibition will be canceled if it is bad weather.

- 🚗 **Vehicle Land: Playing with Toy Vehicles** / Sat., Sept. 17 & Sun., Sept. 18 / 1:00pm - 3:45pm / 1F, *Tamokuteki Hall* / Fee: Free
- 🚗 **Astramline Rail Yard Tour** / Sun., Sept. 25 / ① 10:30am - 11:10am ② 11:30am - 12:10pm / Fee: Admission fee for the museum (Adults-¥510, Seniors & High school students-¥250) **To APPLY:** Send an *ofuku-hagaki* (return postcard) with all applicants' names, address, telephone number, age and the event name **アストラムライン長楽寺車両基地見学会** (*"Astramline Chorakuji sharyo- kichi kengaku-kai"*) to the museum by Sun., Sept. 11. 60 people will be selected at random by a drawing of names for each time slot. ✧ Parents with baby buggies should refrain from participating in the event.
- 🚗 **Children's Craft Workshops** / Sun., Sept. 4, 11, 18 & 25; Mon., Sept. 19 & Thurs., Sept. 22 / 1:00pm - 3:30pm / For preschoolers, elementary school students and their guardians / 1F, Craft Room / Fee: ¥50 for materials ✧ The first 100 groups can participate on each day.
- 🚗 **Craft Workshop for Elementary School Students: UFO-shaped Paper Plane** / Sat., Sept. 17 / ① 9:30am - 11:30am ② 1:30pm - 3:30pm / 1F, Craft Room / For elementary school students (1<sup>st</sup> - 4<sup>th</sup> grade students should be accompanied by their guardians.) / Fee: ¥100 for materials **TO APPLY:** Send an *ofuku-hagaki* (return postcard) with the applicant's name, name of the school the applicant belongs to, grade, address, telephone number, event time you wish to attend (① or ②), event date and the workshop name **小学生工作教室：UFO型紙飛行機** (*"Shogakusei kousaku kyoushitsu: UFO gata kami hikoki"*) to the museum by Wed., Sept. 7. 15 people will be selected at random by a drawing of names for each time slot.
- 🚗 **Craft Workshop for Adults: Corinthian Game** / Sat., Sept. 24 / 10:00am - 1:00pm / 1F, Craft Room / For 16 years old and up / Fee: ¥600 for materials **To APPLY:** Send an *ofuku-hagaki* (return postcard) with applicant's name, address, telephone number, age, event date and the event name **大人の工作教室 コリントゲーム** (*"Otona no kousaku kyoushitsu: Korinto game"*) to the museum by Wed., Sept. 14. 15 people will be selected at random by a drawing of names.



## ☂ Hiroshima City Ebayama Museum of Meteorology

(1-40-1 Eba-minami, Naka-ku 730-0835 / 231-0177 / 9:00am - 5:00pm / Closed on Mondays (except Sept. 19) & Sept. 20 / Adults-¥100, Seniors & High school students-¥50, Junior high & Elementary school students-Free (Admission free for high school students on Saturdays except during school holidays) / <http://www.ebayama.jp/>)

- ✧ **Events for Disaster Prevention Day** / Sat., Sept. 3 & Sun., Sept. 4 / 10:00am - 4:00pm
- ✧ **Science Workshop** / Sat., Sept. 10 / 1:00pm - 3:30pm / For junior high school students and under / Fee: ¥130 for materials ✧ The first 50 people will be accepted for each workshop from 10:00am on the day of.
- ✧ **Science Show** / ① 1:30pm - 2:00pm ② 3:00pm - 3:30pm
- ◆ **Fire Experiments** / Sept. 11 (Sun.), 22 (Thurs.), 24 (Sat.) & 25 (Sun.) /
  - ◆ **Bubbles** / Sept. 17 (Sat.), 18 (Sun.) & 19 (Mon.)

## 🏰 Hiroshima City Museum of History and Traditional Crafts

(2-6-20 Ujina-miyuki, Minami-ku 734-0015 / 253-6771 / 9:00am - 5:00pm / Closed on Mondays (except Sept. 19) & Sept. 20 / Adults-¥100, Seniors & High school students-¥50, Junior high school students and younger-Free / <http://www.hiroins-net.ne.jp/kyodo/>)

### 📖 Special Exhibitions

- ◆ **Life in the Past** / Sat., Sept. 3 - Sun., Dec. 4
- ◆ **Special Exhibition of Aki Fukudagi Bronze Ware** / Sat., Oct. 22 - Sun., Nov. 20

### 📖 Workshops, etc.

- ◆ **Make Tsukimi Dango (rice dumpling for a moon-viewing party)** / Sat., Sept. 24 / 1:00pm - 3:00pm / Elementary school students / Fee: ¥100 (Admission fee for the museum is also required.) ✧ Applications will be accepted by phone or fax between Sept. 1 and 4. 20 people for each day will be selected at random by a drawing of names.
- ◆ **Make an Otedama (small beanbag used as a toy)** / Sat., Oct. 8 / 1:00pm - 3:00pm / Elementary school students and their guardians / Fee: ¥250 (Admission fee for the museum is also required.) ✧ Applications will be accepted by phone or fax between Sept. 1 and 4. 10 postcards will be selected at random by a drawing of names.

Please feel free to contact the International Exchange Lounge at 082-247-9715.

E-mail: [golounge@pcf.city.hiroshima.jp](mailto:golounge@pcf.city.hiroshima.jp)

September 2016



## 🎬 Hiroshima City Cinematographic and Audio-Visual Library

(3-1 Moto-machi, Naka-ku 730-0011 / 223-3525 / 10:00am - 8:00pm (Tue.-Sat.), 10:00am - 5:00pm (Sun., national holidays & August 6) / Closed on Mondays (except Sept. 19) & Sept. 20 / 35mm Film Showings ⇒ Adults-¥510, Seniors & High school students-¥250, Junior high school students or younger-Free; Other Film Showings ⇒ Adults-¥380, Seniors & High school students - ¥180, Junior high school students or younger - Free, Admission free for foreign students (Please show your student ID or the Hiroshima International Center Complimentary Pass.) / <http://www.cf.city.hiroshima.jp/eizou/>

## 🎬 September Special Showings of Masterpieces of Japanese Film: Yujiro Ishihara & Nikkatsu Movie Stars (Screened in Japanese only)

### 👉 Admission Fee:

Adults-¥510, Seniors (65 years old and up) & High school students-¥250, Junior high & Elementary school students-Free  
★ Sat., Sept. 3, 10 & 17: Free admission for high school students

- Fri., Sept. 2 / ① 10:30am ② 2:00pm ③ 6:30pm  
Umi no yaro domo / 海の野郎ども (1957, Nikkatsu, 86 min., B&W) / Director: Kaneto Shindo / Cast: Yujiro Ishihara, Shoji Yasui, Taiji Tonoyama, Ko Nishimura
- Sat., Sept. 3 / ① 10:30am ② 2:00pm ③ 6:00pm  
Ore wa matteruze / 俺は待ってるぜ (1957, Nikkatsu, 90 min., B&W) / Director: Koreyoshi Kurahara / Cast: Yujiro Ishihara, Mie Kitahara, Hideaki Nitani, Isamu Kosugi
- Sun., Sept. 4 / ① 10:30am ② 2:00pm  
Arashi wo yobu otoko / 嵐を呼ぶ男 (1957, Nikkatsu, 100 min., color) / Director: Umetsugu Inoue / Cast: Yujiro Ishihara, Mie Kitahara, Izumi Ashikawa, Nobuo Kaneko
- Fri., Sept. 9 / ① 10:30am ② 2:00pm ③ 6:30pm  
Sabita knife / 錆びたナイフ (1958, Nikkatsu, 90 min., B&W) / Director: Toshio Masuda / Cast: Yujiro Ishihara, Mie Kitahara, Jo Shishido, Akira Kobayashi
- Sat., Sept. 10 / ① 10:30am ② 3:00pm  
Hi no ataru sakamichi / 陽のあたる坂道 (1958, Nikkatsu, 209 min., B&W) / Director: Tomotaka Tasaka / Cast: Yujiro Ishihara, Mie Kitahara, Izumi Ashikawa, Tamio Kawachi
- Sun., Sept. 11 / ① 10:30am ② 2:00pm  
Wakai kawa no nagare / 若い川の流れ (1959, Nikkatsu, 127 min., B&W) / Director: Tomotaka Tasaka / Cast: Yujiro Ishihara, Mie Kitahara, Izumi Ashikawa, Hisako Yamane

- Fri., Sept. 16 / ① 10:30am ② 2:00pm ③ 6:30pm  
Nangoku Tosa wo ato ni shite / 南國土佐を後にして (1959, Nikkatsu, 78 min., color) / Director: Buichi Saito / Cast: Akira Kobayashi, Ruriko Asaoka, Yoko Minamida, Sanae Nakahara
- Sat., Sept. 17 / ① 10:30am ② 2:00pm ③ 6:00pm  
Muteki ga ore wo yondeiru / 霧笛が俺を呼んでいる (1960, Nikkatsu, 79 min., color) / Director: Tokujiro Yamazaki / Cast: Keiichiro Akagi, Ryoji Hayama, Izumi Ashikawa, Sayuri Yoshinaga
- Sun., Sept. 18 / ① 10:30am ② 2:00pm  
Aoi sanmyaku / 青い山脈 (1963, Nikkatsu, 99 min., color) / Director: Katsumi Nishikawa / Cast: Sayuri Yoshinaga, Mitsuo Hamada, Hideki Takahashi, Izumi Ashikawa
- Thurs., Sept. 29 / ① 10:30am ② 2:00pm ③ 6:30pm  
Eden no umi / エデンの海 (1963, Nikkatsu, 97 min., color) / Director: Katsumi Nishikawa / Cast: Masako Izumi, Hideki Takahashi, Eijiro Tono, Asao Sano
- Fri., Sept. 30 / ① 10:30am ② 2:00pm ③ 6:30pm  
Kenka elegy / けんかえれじい (1966, Nikkatsu, 86 min., B&W) / Director: Seijun Suzuki / Cast: Hideki Takahashi, Junko Asano, Yusuke Kawazu, Takeshi Kato

## 🎬 Family Theater (Screened in Japanese only)

### 👉 Admission Fee:

Adults-¥510, Seniors (65 years old and up) & High school students-¥250, Junior high & Elementary school students-Free  
★ Sat., Sept. 24: Free admission for high school students

- Mon., Sept. 19 / ① 10:30am ② 2:00pm  
Ginga tetsudo 999 / 銀河鉄道 999 (1979, Toei Doga, 128 min., color) / Director: Rintaro / Cast: Masako Nozawa, Masako Ikeda, Makio Inoue, Kaneta Kimotsuki

## 🎬 YAMAGATA in Hiroshima ~ Special Line-up from YAMAGATA International Documentary Film Festival 2015 ~ (Screened in original language)

### 👉 Admission Fee:

Adults-¥380, Seniors (65 years old and up) & High school students-¥180, Junior high & Elementary school students-Free

- Wed., Sept. 21 & Thurs., Sept. 22 / Sept. 21: 2:00pm; Sept. 22: 10:30am  
Homeland (Iraq Zero Year) (2015, Iraq, France, 334 min. color, Arabic, with Japanese and English subtitles) / Director: Abbas Fahdel  
★ 2015 Awards of Excellence & Citizen's Prize

Please feel free to contact the International Exchange Lounge at 082-247-9715.

E-mail: [golounge@pcf.city.hiroshima.jp](mailto:golounge@pcf.city.hiroshima.jp)

September 2016



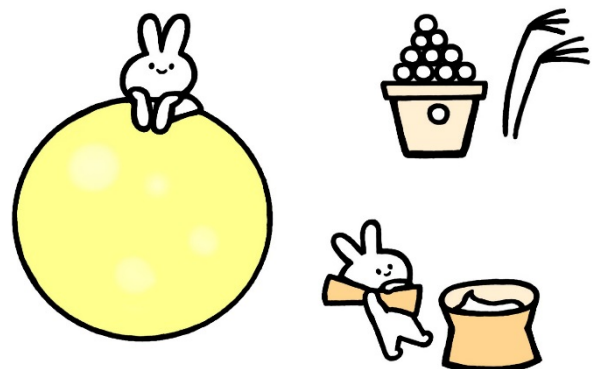
- **Sat., Sept. 24** / ① 2:00pm ② 6:00pm  
**Us women, Them women** (2015, Argentine, 65 min. color, Spanish, with Japanese & English subtitles) / Director: Julia Pesce  
 \* 2015 Special Prize
- **Sun., Sept. 25** / ① 10:30am ② 2:00pm  
**Future June** (2015, Brazil, 95 min. color, Portuguese, with Japanese and English subtitles) / Director: Maria Augusta Ramos
- **Tue., Sept. 27** / ① 2:00pm ② 6:30pm  
**The Copper Village** (2015, Nepal, 90 min. color, Nepali, with Japanese and English subtitles) / Director: Dipes Kharel, Frode Storaas
- **Wed., Sept. 28** / ① 2:00pm ② 6:30pm  
**Gone** (2015, China, Germany, 78 min. color, Chinese, with Japanese and English subtitles) / Director: Jin Xingzheng

🎬 **Culture Film Screening**  
 (Screened in Japanese only)

👋 **Admission Fee:**

Adults-¥380, Seniors (65 years old and older)  
 & High school students-¥180, Junior high &  
 Elementary school students-Free

- **Wed., Sept. 7** / ① 2:00pm ② 6:00pm  
**Thurs., Sept. 8** / ① 10:30am ② 2:00pm  
 3 films, 98 min.
- ① Yureugoku daichi ~jishin no kyōi~ / 揺れ動く大地 ~地震の驚異~
- ② Kazan retto no nazo / 火山列島の謎
- ③ Atarashii chikyu no kagaku ~Nihon retto no tanjo~ / 新しい地球の科学 ~日本列島の誕生~
- **Wed., Sept. 14** / ① 2:00pm ② 6:00pm  
**Thurs. Sept. 15** / ① 10:30am ② 2:00pm  
 3 films, 69 min.
- ① Sora kara mita nihon no kasan / 空から見た日本の火山
- ② Shizen no fūkei ~chikei to sono naritachi~ / 自然の風景 ~地形とその成り立ち~
- ③ St. Helens dai funka / セントヘレンズ大噴火



Please feel free to contact the International Exchange Lounge at 082-247-9715.

E-mail: [golounge@pcf.city.hiroshima.jp](mailto:golounge@pcf.city.hiroshima.jp)

September 2016



# Library News

September 2016

## Recommended Books for This Month

### The Dog Stars

By Peter Heller (Headline Review, 2013)

### What Alice Forgot

By Liane Moriarty (Penguin Books, 2014)

### Where'd You Go, Bernadette

By Maria Semple (Phoenix, 2013)

### The Daughter of Time

By Josephine Tey (Arrow Books, 2009)

### Revenge Wears Prada: The Devil Returns

By Lauren Weisberger (Harper, 2013)

What other books should we add to our collection? Your suggestions are always welcome!



## Library Corner

LOCATION: International Conference Center Hiroshima (ICCH), 1<sup>st</sup> Floor

T E L L : (082)247-9715

H O U R S : 9:00 am - 7:00 pm (From April 1 to September 30)

9:00 am - 6:00 pm (From October 1 to March 31)

C L O S E D : December 29<sup>th</sup> through January 3<sup>rd</sup>

### BOOK LOAN POLICY:

Up to three books may be borrowed for a two-week period. To obtain an ICCH Library Card, you need to bring identification which has your address, and for foreign residents, your period of stay in Japan. (A Japanese driver's license, student identification card, passport or resident card is an acceptable form of identification.)



Please feel free to contact the International Exchange Lounge at 082-247-9715.

E-mail: [golounge@pcf.city.hiroshima.jp](mailto:golounge@pcf.city.hiroshima.jp)

September 2016



# 図書だより

2016<sup>ねん</sup>年9<sup>がつ</sup>月

今<sup>こん</sup>月<sup>げつ</sup>のおすす<sup>と</sup>め<sup>しよ</sup>図書

兄<sup>あに</sup> かぞくのくに

ヤン ヨンヒ／著<sup>しょうがくかん</sup>（小学館<sup>ねん</sup>，2013年）

日本<sup>にほん</sup>に生きる北朝鮮<sup>い</sup>人<sup>きたちようせんじん</sup> リ・ハナ<sup>いっぽいっぽ</sup>の一步一步

リ・ハナ／著<sup>ちよ</sup>

（アジアプレス・インターナショナル出版部<sup>しゅつばんぶ</sup>，2013年<sup>ねん</sup>）

となりの席<sup>せき</sup>は外国人<sup>がいこくじん</sup>

あらた 真琴<sup>まこと</sup>／著<sup>ちよ</sup>（ぶんか社<sup>しゃ</sup>，2012年<sup>ねん</sup>）

モット！となりの席<sup>せき</sup>は外国人<sup>がいこくじん</sup>

あらた 真琴<sup>まこと</sup>／著<sup>ちよ</sup>（ぶんか社<sup>しゃ</sup>，2013年<sup>ねん</sup>）

サードカルチャーキッズ：多文化<sup>たぶんか</sup>の間<sup>はざま</sup>で生きる子どもたち<sup>こ</sup>

デビッド・C. ポロック／著<sup>ちよ</sup>， ルース＝ヴァン・リーケン／著<sup>ちよ</sup>

かのう 嘉納<sup>かも</sup> もも／訳<sup>やく</sup>， 日部<sup>かべ</sup> 八重子<sup>やえこ</sup>／訳<sup>やく</sup>（スリーエーネットワーク<sup>ねん</sup>，2010年）

本<sup>ほん</sup>のリクエス<sup>と</sup>トなど図書<sup>かん</sup>コーナ<sup>ようぼう</sup>ーに関するご要望<sup>き</sup>はス<sup>き</sup>タフ<sup>がる</sup>までお気<sup>もう</sup>軽<sup>で</sup>にお申<sup>で</sup>し出<sup>で</sup>ください。



## 図書<sup>と</sup>書<sup>しよ</sup>コーナ<sup>ー</sup>

場<sup>ば</sup> 所<sup>しよ</sup>: 広島<sup>ひろしま</sup>国際<sup>こくさい</sup>会議<sup>かいぎ</sup>場<sup>じやう</sup> 1 F・国際<sup>こくさい</sup>交<sup>こう</sup>流<sup>りゅう</sup>ラウ<sup>らう</sup>ンジ（平和<sup>へい</sup>記<sup>き</sup>念<sup>ねん</sup>公<sup>こう</sup>園<sup>えん</sup>内<sup>ない</sup>）  
TEL (082)247-9715

開<sup>かい</sup>館<sup>かん</sup>時<sup>じ</sup>間<sup>かん</sup>: 9:00am - 7:00pm（4月<sup>がつ</sup>1日<sup>たち</sup>から 9月<sup>がつ</sup>30日<sup>にち</sup>まで）  
9:00am - 6:00pm（10月<sup>がつ</sup>1日<sup>たち</sup>から 3月<sup>がつ</sup>31日<sup>にち</sup>まで）

休<sup>きゅう</sup>館<sup>かん</sup>日<sup>び</sup>: 12月<sup>がつ</sup>29日<sup>にち</sup>～1月<sup>がつ</sup>3日<sup>か</sup>

貸<sup>かし</sup> 出<sup>だし</sup>: 図書<sup>と</sup>書<sup>しよ</sup>は 2週<sup>しゅう</sup>間<sup>かん</sup>を期<sup>き</sup>限<sup>げん</sup>として、1回<sup>かい</sup>3冊<sup>さつ</sup>まで借<sup>か</sup>りるこ<sup>か</sup>がで<sup>か</sup>きます。

はじ りよう さい じゅうしよ ざいりゅうきかん がいこくじん かた しょうめい うんでんめんきょしょう  
初<sup>はじ</sup>めて利<sup>り</sup>用<sup>よう</sup>する際<sup>さい</sup>には、住<sup>じゅう</sup>所<sup>しよ</sup>や在<sup>ざい</sup>留<sup>りゅう</sup>期<sup>き</sup>間<sup>かん</sup>（外<sup>がい</sup>国<sup>こく</sup>人<sup>じん</sup>の方<sup>かた</sup>）を証<sup>しょう</sup>明<sup>めい</sup>するもの（運<sup>うん</sup>転<sup>てん</sup>免<sup>めん</sup>許<sup>きょ</sup>証<sup>しょう</sup>・  
学<sup>がく</sup>生<sup>せい</sup>証<sup>しょう</sup>・パ<sup>ぱ</sup>ス<sup>す</sup>ポ<sup>ぽ</sup>ー<sup>と</sup>・在<sup>ざい</sup>留<sup>りゅう</sup>カ<sup>か</sup>ー<sup>ど</sup>な<sup>な</sup>ど）を提<sup>てい</sup>示<sup>じ</sup>して下<sup>くだ</sup>さい。



Please feel free to contact the International Exchange Lounge at 082-247-9715.

E-mail: [golounge@pcf.city.hiroshima.jp](mailto:golounge@pcf.city.hiroshima.jp)

September 2016



# Trio-Phone Service

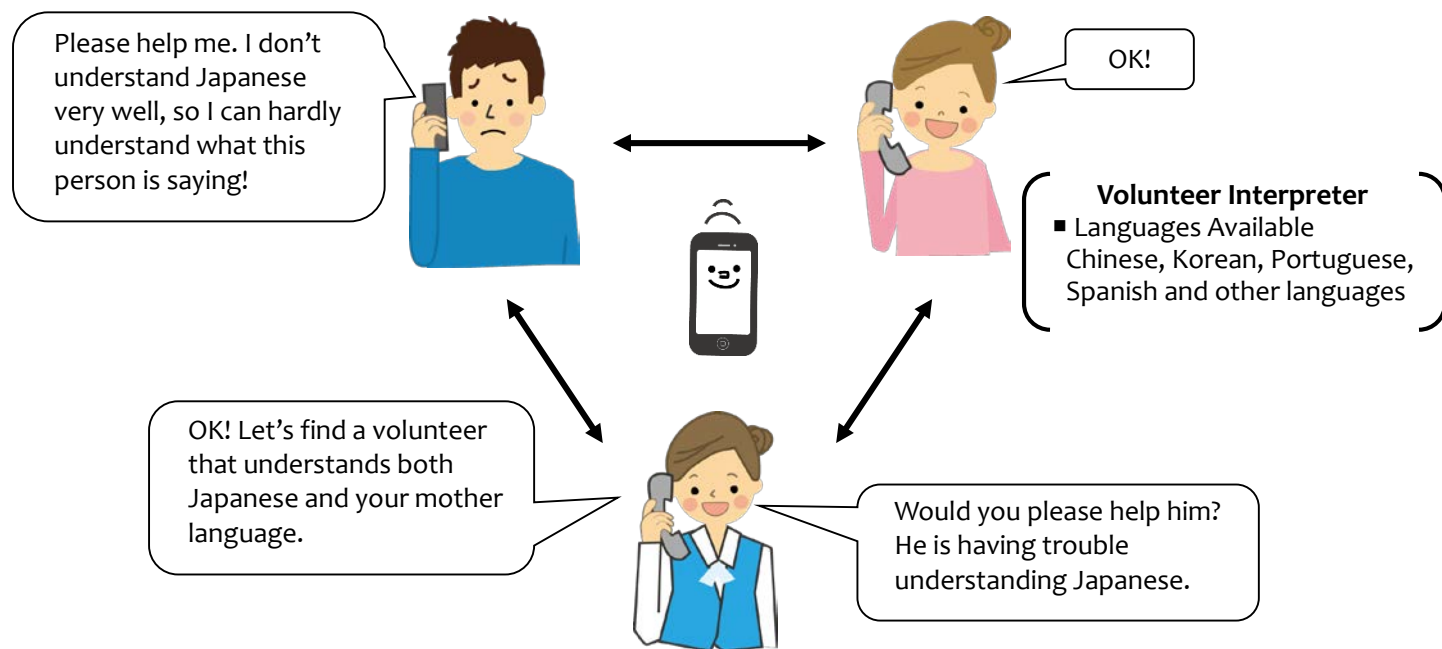
## (Multilingual Interpretation over the Telephone)



### What is Trio-Phone ?

Trio-Phone Service allows three people to have a conversation at the same time through the telephone. If you are having difficulties communicating in Japanese, call the International Exchange Lounge (082-247-9715).

A volunteer interpreter will help you through the Trio-Phone Service!



**International Exchange Lounge (Available in English)**

**TEL: 082-247-9715**

**OPEN: 9:00am – 7:00pm (April 1 – September 30)**

**9:00am – 6:00pm (October 1 – March 31)**

**CLOSED: December 29 through January 3**

**[For more information]**

**Hiroshima Peace Culture Foundation**

*International Exchange Lounge*

TEL: 082-247-9715 FAX: 082-242-7452 E-mail: [golounge@pcf.city.hiroshima.jp](mailto:golounge@pcf.city.hiroshima.jp)

*International Relations & Cooperation Division*

TEL: 082-242-8879 FAX: 082-242-7452 E-mail: [internat@pcf.city.hiroshima.jp](mailto:internat@pcf.city.hiroshima.jp)

HP: <http://www.pcf.city.hiroshima.jp/ircd>

Please feel free to contact the International Exchange Lounge at 082-247-9715.

E-mail: [golounge@pcf.city.hiroshima.jp](mailto:golounge@pcf.city.hiroshima.jp)

September 2016



# トリオフォンサービスを利用できます



## トリオフォン（電話による多言語ボランティア通訳）とは？

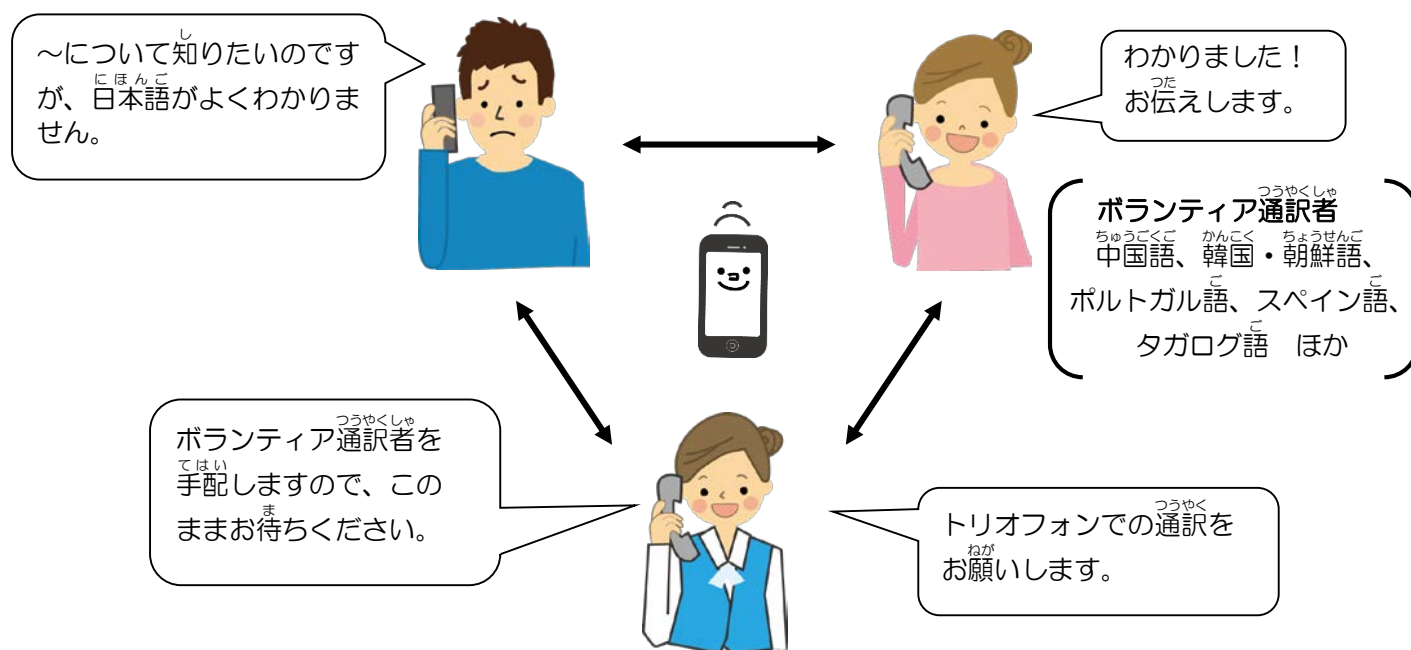
「トリオフォン」とは、3人同時に電話で会話ができるシステムです。

日本語に自信がない外国人市民のみなさん！

国際交流ラウンジに電話をすれば、ボランティア通訳者を通じて、

母国語で知りたいことがわかるという便利なサービスです。

ぜひご利用ください。



国際交流ラウンジ（英語でもお話しできます）

TEL：082-247-9715

開館時間：9:00～19:00（4月1日～9月30日）

9:00～18:00（10月1日～3月31日）

休館日：12月29日～1月3日

### 【問い合わせ】

（公財）広島平和文化センター

〒730-0811 広島市中区中島町1-5（広島国際会議場内）

国際交流ラウンジ

TEL：082-247-9715 FAX：082-242-7452 Eメール：golounge@pcf.city.hiroshima.jp

国際部 国際交流・協力課

TEL：082-242-8879 FAX：082-242-7452 Eメール：internat@pcf.city.hiroshima.jp

HP: <http://www.pcf.city.hiroshima.jp/ircd/>

Please feel free to contact the International Exchange Lounge at 082-247-9715.

E-mail: [golounge@pcf.city.hiroshima.jp](mailto:golounge@pcf.city.hiroshima.jp)

September 2016



# 使用済み切手、テレホンカード、ペットボトルのキャップで「小さな国際協力」 Assisting with International Cooperation with Used Stamps, Telephone Cards & PET Bottle Caps

The International Exchange Lounge collects used stamps and telephone cards to assist international cooperation activities. Through the two volunteer groups, JOCS and ShaplaNeer, the collected stamps and cards are sold to collectors to raise money. With the profit, items such as milk and medicine are purchased and doctors as well as nurses are dispatched throughout Asia and other continents. We also collect PET bottle caps in order to support the “Ecocap Action”. The sales profits obtained by recycling caps are donated to the Japan Committee “Vaccines for the World’s Children” (JCV).

\*JOCS: Japan Overseas Christian Medical Cooperative Service

\*ShaplaNeer = Citizens’ Committee in Japan for Overseas Support

国際交流ラウンジでは国際協力に役立てるため、使用済み切手、テレホンカード、ペットボトルのキャップを収集しています。収集した切手とテレホンカードは、それぞれ公益社団法人日本キリスト教海外医療協力会 (JOCS)、特定非営利活動法人シャプラニール＝市民による海外協力の会へ郵送し、最終的に収集家によって購入されます。この収益金により、例えばアジア地域に医師や看護師を派遣することができます。収集したペットボトルのキャップは、キャップの再資源化で得た売上金を認定NPO法人「世界の子どもにワクチンを」日本委員会 (JCV) へ寄付し、発展途上国の子どもたちにワクチンを届けるというエコキャップ活動に役立てられます。

## HOW TO COLLECT:

- ☐ **Stamps** ⇒ When you cut stamps from envelopes, please leave 5mm of paper around them. It is not necessary to remove them from the envelope. Torn or folded stamps cannot be accepted.
- ☐ **Telephone Cards** ⇒ Please note that cards which are folded or stained cannot be accepted.
- ☐ **PET Bottle Caps** ⇒ Only PET bottle caps for drinks or mineral water are accepted. Please wash the caps and tear off the sticker if it has one. This is in order to avoid damaging the recycling machines. Things such as metal caps and pull-top tabs cannot be accepted.

## 収集方法:

- ☐ **切手** ⇒ 封筒に貼ってある切手を、周囲約5ミリの余白を残してカットしてください。切手を封筒からはがす必要はありません。破れや折れなどの傷のある切手は収集の対象にはなりません。
- ☐ **テレホンカード** ⇒ テレホンカードのみ収集しています。ただし、汚れや折れなどのあるカードは除外されます。
- ☐ **ペットボトルのキャップ** ⇒ 清涼飲料水とミネラルウォーター用ペットボトルのキャップが収集対象です。収集にあたっては機械の故障を防止するため、キャップを洗い、またシールなどがあればはがしてください。金属製の蓋やプルトップなどは収集対象外です。

For further information, please ask the staff at the International Exchange Lounge.

詳しい情報につきましては国際交流ラウンジカウンターまでお問い合わせください。



International Exchange Lounge / 国際交流ラウンジ

Tel. 082-247-9715 Fax. 082-242-7452

E-mail: [golounge@pcf.city.hiroshima.jp](mailto:golounge@pcf.city.hiroshima.jp)



Please feel free to contact the International Exchange Lounge at 082-247-9715.

E-mail: [golounge@pcf.city.hiroshima.jp](mailto:golounge@pcf.city.hiroshima.jp)

September 2016



# Garbage Disposal Information

Separate garbage properly and take it to the collection site by 8:30am on the designated day. Please do NOT take garbage to the site on the night before. Garbage collection days vary depending on where you live and the category of the refuse. For further details, consult your local ward office or your neighbors to be sure of the proper disposal method. "Hiroshima 8", a handbook on how to separate garbage, and "Hiroshima City Garbage Disposal Guidelines for the 2016 fiscal year", a garbage chart with schedules of garbage collection days, are available at ward offices, branch offices and community halls. The Handbook and Guidelines are translated into English, Spanish, Portuguese, Chinese and Korean. These are also available at the International Exchange Lounge (International Conference Center Hiroshima), so please ask the staff if you need them.

## ごみの正しい出しかた

ごみは種類ごとに分けて、決められた日の朝8時半までに、決められた場所へ整理して出してください。ただし、収集日の前夜には出さないでください。ごみを出す曜日や日は、あなたの住んでいる町とごみの種類によって決められています。詳しいことはお住まいの地域の区役所や近所の人に尋ねて、正しいごみの出しかたを確認しましょう。各区役所・出張所、公民館において、ごみの正しい出しかたについて書かれたハンドブックやごみの収集日の表（英語、スペイン語、ポルトガル語、中国語、ハングル語）を配布しています。また、国際交流ラウンジでも配布していますので、ご希望の方はスタッフまで申し出てください。

### We have charts for;

- |                   |                       |
|-------------------|-----------------------|
| ★ Naka-ku / 中区    | ★ Asaminami-ku / 安佐南区 |
| ★ Higashi-ku / 東区 | ★ Asakita-ku / 安佐北区   |
| ★ Nishi-ku / 西区   | ★ Aki-ku / 安芸区        |
| ★ Minami-ku / 南区  | ★ Saeki-ku / 佐伯区      |



Please feel free to contact the International Exchange Lounge at 082-247-9715.

E-mail: [golounge@pcf.city.hiroshima.jp](mailto:golounge@pcf.city.hiroshima.jp)

September 2016



# Japanese Language Classes in Hiroshima City

These are Japanese language classes held at community halls, and other public facilities in Hiroshima City. The lessons are free for the most part; however, some classes may charge a fee for materials. Some classes require you to observe the lesson in advance. There is also the possibility that the information mentioned below has changed. Please inquire at the relevant class for further information before you attend the lesson.

As of April 2016

## ■ Naka Ward

### #1 Hiroshima Japanese Language Class

**PLACE:** ① Hiroshima Kokusai Kaigi-jo, 3F Kenshu-shitsu (1-5 Nakajima-cho, Naka-ku)  
② Hiroshima Kokusai Center (Hiroshima International Center)  
(Crystal Plaza 6F, 8-18 Naka-machi, Naka-ku)

**DATE & TIME:**

- ① Every Wednesday, 6:30pm – 8:00pm
- ① ② Every Saturday, 10:00am – noon

**TUITION:** Free

**ENROLLMENT:** Enroll any time you please

**INQUIRIES:** Hiroshima Japanese Language Class

Tel. 090-1339-1454

Email: [Hiroshima.nihongo@gmail.com](mailto:Hiroshima.nihongo@gmail.com)

**ACCESS:**

**Hiroshima Kokusai Kaigi-jo**

⇒ Located in Peace Memorial Park

- ① Take bus No.24 bound for Yoshijima Eigyocho (吉島営業所) and get off at Heiwa Kinen Koen (平和記念公園). It is a 3 min. walk from there.

- ② It is a 5 min. walk from the Gembaku Dome-mae (原爆ドーム前) Streetcar Stop.

**Hiroshima Kokusai Center**

(Hiroshima International Center)

- ⇒ It is a 5 min. walk from the Fukuro-machi (袋町) Streetcar Stop. Near the ANA Crowne Plaza Hotel Hiroshima

**URL:** <http://hiroshimakyoishitsu.wix.com/nihongo>

Hiroshima Nihongo Kyoshitsu

**Facebook:** ひろしま日本語教室 [Hiroshima Japanese Class](https://www.facebook.com/HiroshimaJapaneseClass)

### #2 Japanese Language Class Peace

**PLACE:** Hiroshima YMCA (7-11 Hatchobori, Naka-ku)

**DATE & TIME:** Every Saturday, 1:00pm – 3:00pm

**TUITION:** Free

**ENROLLMENT:** Enroll any time you please

**INQUIRIES:** Japanese Language Class Peace

Email: [ninjapanese.peace@gmail.com](mailto:ninjapanese.peace@gmail.com)

**ACCESS:** Hiroshima YMCA

- ① From Hiroshima Train Station (south exit), take any streetcar other than number 5 to Tatemachi (立町) stop. It is a 3 minute walk from there.
- ② From Hiroshima Bus Center, it is a 5 minute walk.

### #3 Nihongo Gakushu Kai

**PLACE:** Hiroshima-shi Shakai Fukushi Center  
(1-9-43 Senda-machi, Naka-ku)

**DATE & TIME:** Every Thursday, 10:00 am – noon

**TUITION:** 100yen/month

**ENROLLMENT:** Enroll any time you please

**INQUIRIES:** Hiroshima-shi Shakai Fukushi Center  
Tel. 082-243-0051

**ACCESS:** It is a 10 min. walk from the Takanobashi (鷹野橋) Streetcar Stop.

### #4 Japanese Language Class Kogusa

**PLACE:** Takeya Komin-kan

(3-15 Takara-machi, Naka-ku)

**DATE & TIME:** Every Wednesday, 1:00 pm – 4:00 pm

**TUITION:** 100yen/month

**ENROLLMENT:** Enroll any time you please

**INQUIRIES:** Takeya Komin-kan Tel. 082-241-8003

**ACCESS:** Take a bus bound for Daigaku Byoin (大学病院) and get off at Takeya-cho (竹屋町). It is a 5 min. walk from there, near the Fuji Grand supermarket.

### #5 Japanese Study Class for Returnees from China Chugoku Kikokusha no Kai

**PLACE:** Chuo Komin-kan

(24-36 Nishi-hakushima-cho, Naka-ku)

**DATE & TIME:** Every Monday, Wednesday and Saturday,  
10:00 am – noon

**INQUIRIES:** Chuo Komin-kan Tel. 082-221-5943

**ACCESS:** Located near Moto-machi High School

- ① Take a bus bound for Yokogawa (横川) or Daigaku Byoin (大学病院) and get off at Nishi-hakushima (西白島). It is a 5 min. walk from there.
- ② It is a 5 min. walk from the Johoku (城北) Station (Astramline).





#6 HarukazeJapanese Volunteer Group

**PLACE:** International Exchange Lounge (Hiroshima Kokusai Kaigi-jo, 1F) or schools that students are attending

**DATE & TIME:** Every Saturday, 10:00 am – noon at the International Exchange Lounge

**TUITION:** Free

**INQUIRIES:** Tel. 082-277-8330 (Sato)

Email: [harukaze@feel.ocn.ne.jp](mailto:harukaze@feel.ocn.ne.jp)

**ACCESS:** International Exchange Lounge

① Take bus No.24 bound for Yoshijima Eigyocho (吉島営業所) and get off at Heiwa Kinen Koen (平和記念公園). It is a 3 min. walk from there.

② It is a 5 min. walk from the Gembaku Dome-mae (原爆ドーム前) Streetcar Stop.

■ **Minami Ward**#7 WednesdayJapanese Language Club

**PLACE:** Ryugakusei Kaikan  
Hiroshima City International House  
(1-1 Nishi-Kojin-machi, Minami-ku)

**DATE & TIME:** Every Wednesday, 10:00 am - noon

**TUITION:** Free

**ENROLLMENT:** Enroll any time you please

**INQUIRIES:** Ryugakusei Kaikan Tel. 082-568-5931

**ACCESS:** It is a 5 min. walk towards east from JR Hiroshima (広島) Station, next to the Ark Hotel.

#8 Minna-no-Nihongo Class

**PLACE:** Ryugaku-sei Kaikan  
Hiroshima City International House  
(1-1 Nishi-Kojin-machi, Minami-ku)

**DATE & TIME:** Every Saturday, 1:30 pm – 3:30 pm

**TUITION:** Free

**ENROLLMENT:** Enroll any time you please

**INQUIRIES:** Ryugaku-sei Kaikan Tel. 082-568-5931

**ACCESS:** It is a 5 min. walk towards east from JR Hiroshima (広島) Station, next to the Ark Hotel.

#9 Fureai Japanese Language Class

**PLACE:** Aosaki Komin-kan  
(1-12-7 Aosaki, Minami-ku)

**DATE & TIME:** Every Saturday, 7:00 pm – 9:00 pm

**TUITION:** Free

**ENROLLMENT:** Enroll any time you please

**INQUIRIES:** Aosaki Komin-kan Tel. 082-281-3802

**ACCESS:** It is a 5 min. walk from the JR Mukainada (向洋) Station (JR Sanyo or JR Kure Line).

■ **Higashi Ward**#10 Ushita Japanese Language Class

**PLACE:** Ushita Komin-kan  
(1-8-3 Ushita-shin-machi, Higashi-ku)

**DATE & TIME:** Every Wednesday, 1:30 pm – 3:30 pm  
Classes will be closed during summer holiday season (late July to the end of August), New Year's holiday season and on closed days of Ushita Komin-kan.

**TUITION:** Free

**ENROLLMENT:** Enroll any time you please

**INQUIRIES:** Ushita Komin-kan Tel. 082-227-0706

**ACCESS:** Get off at Ushita (牛田) Station (Astramline). It is a 5 min. walk from there. It is located next to the Higashi Ward Sports Center.

■ **Nishi Ward**#11 Minami-kanon Japanese Language Volunteer Group

**PLACE:** Minami-kanon Komin-kan  
(2-16-46 Kanon-shin-machi, Nishi-ku)

**DATE & TIME:** Every Saturday, 6:00 pm – 9:00 pm

**TUITION:** Free

**ENROLLMENT:** Enroll any time you please

**INQUIRIES:** Minami-kanon Komin-kan  
Tel. 082-293-1220

**ACCESS:** Take the No. 3 bus bound for Hiroshima Heliport or Marina Hop and get off at Kanon-shin-machi 3 cho-me (観音新町 3 丁目) Stop. It is a 5 min. walk from there.

#12 Japanese Language Class Momiji

**PLACE:** Furuta Komin-kan  
(19-15 Furue-nishi-machi, Nishi-ku)

**DATE & TIME:** Every Friday, 10:00 am – noon

**TUITION:** 100yen/month

**ENROLLMENT:** Enroll any time you please

**INQUIRIES:** Furuta Komin-kan Tel. 082-272-9001

**ACCESS:** It is a 5 min. walk from the Furue (古江) Streetcar Stop (Miyajima Line).

#13 IVC: Kokusai Volunteer Club ~ Nihongo

**PLACE:** Kusatsu Komin-kan  
(2-20-7 Kusatsu-higashi, Nishi-ku)

**DATE & TIME:** Every Wednesday, 10:00 am – 12:30 pm  
Every Saturday, 1:30 pm – 3:30 pm

**TUITION:** Free

**ENROLLMENT:** Enroll any time you please

**INQUIRIES:** Kusatsu Komin-kan Tel. 082-271-2576

**ACCESS:** It is a 2 min. walk from the Kusatsu (草津) Streetcar Stop (Hiroden Miyajima Line).



## ■ Asaminami Ward

### #14 Gion Japanese Language Class

**PLACE:** Gion Komin-kan

(1-13-26 Nishihara, Asaminami-ku)

**DATE & TIME:** Every Friday, 10:30 am – 1:00 pm  
Lesson schedule may change during school holiday seasons.

**TUITION:** Free

**ENROLLMENT:** Enroll any time you please

**INQUIRIES:** Gion Komin-kan Tel. 082-874-5181

**ACCESS:**

- ① It is a 5 min. walk from the JR Shimo-gion (下祇園) Station (JR Kabe Line).
- ② It is a 15 min. walk from the Gion Shin-bashi-kita (祇園新橋北) Station (Astramline).
- ③ It is a 5 min. walk from the NHK Housousyo-mae bus stop.

◆ Child-care service is available during the class. (Prior reservation is required.)

### #15 Yasu-higashi Japanese Language Class

**PLACE:** Yasu-higashi Komin-kan

(2-16-42 Yasu-higashi, Asaminami-ku)

**DATE & TIME:** Every Friday, 6:00 pm – 7:30 pm  
Because classes are held on a semester system, there are times when classes will not be held.

**TUITION:** Free

**ENROLLMENT:** Enroll whenever you please (during the term only)  
Inquire at the Yasu-higashi Komin-kan for more information including the term schedule.

**INQUIRIES:** Yasu-higashi Komin-kan  
Tel. 082-878-7683

**ACCESS:** It is a 5 min. walk from Yasu-higashi (安東) Station (Astramline).

### #16 Sato Japanese Language Class

**PLACE:** Sato Komin-kan (6-29-25 Midorii, Asaminami-ku)

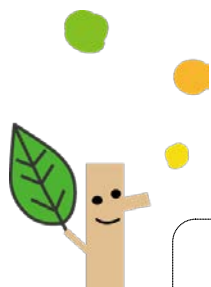
**DATE & TIME:** Every Wednesday, 9:30 am – 12:30 pm

**TUITION:** Free

**ENROLLMENT:** Enroll any time you please

**INQUIRIES:** Sato Komin-kan Tel. 082-877-5200

**ACCESS:** It is a 3 min. walk from the Shichiken-jaya (七軒茶屋) Station (JR Kabe Line).



### #17 Numata Japanese Language Class

**PLACE:** Numata Komin-kan

(5697 Tomo, Numata-cho, Asaminami-ku)

**DATE & TIME:** Every Saturday, 1:00 pm – 4:00 pm

**TUITION:** Free

**ENROLLMENT:** Enroll any time you please  
A lesson observation is required in advance. Inquire at the Numata Komin-kan.

**INQUIRIES:** Numata Komin-kan Tel. 082-848-0242

**ACCESS:**

- ① It is a 5 min. walk from the Obara (大原) Station (Astramline).
- ② At JR Hiroshima Station (south exit), take a bus bound for Ichiritsu Daigaku (市立大学) via Kokudo 54 and get off at Mitsubishi-danchi-iriguchi (三菱団地入口) (a 1 hour bus ride). It is a 8 min. walk from there.
- ③ At the Hiroshima Bus Center (Hiroshima Sogo Department Store, 3F), take a bus bound for Kusunoki-dai (くすの木台) via Kosoku 4-go-sen and get off at Obara Eki (大原駅) (a 30 min. bus ride). It is a 5 min. walk from there.

## ■ Asakita Ward

### #18 Magame Japanese Language Class

**PLACE:** Magame Komin-kan

(1-3-27 Magame, Asakita-ku)

**DATE & TIME:** Every Sunday, 10:00 am – noon  
Classes will be closed during New Year's holiday season.

**TUITION:** Free

**ENROLLMENT:** Enroll any time you please

**INQUIRIES:** Magame Komin-kan Tel. 082-842-8223

**ACCESS:** Take a bus bound for Obayashi Shako (大林車庫) via Koyo A Danchi (高陽A団地) and get off at Terasako Koen (寺迫公園). It is a 1 min. walk from there.

### #19 Kameyama

#### Japanese Language Class Amigo

**PLACE:** Kameyama Komin-kan

(3-16-16 Kameyama-minami, Asakita-ku)

**DATE & TIME:** Every Sunday, 10:00 am – 12:30 pm

**TUITION:** Free

**ENROLLMENT:** Enroll any time you please

**INQUIRIES:** Kameyama Komin-kan  
Tel. 082-815-1830

**ACCESS:** Take a bus bound for Katsuki (勝木) via Nijiyama Danchi (虹山団地) and get off at Nijiyama Danchi-shita (虹山団地下). It is a 5 min. walk from there.



## ■ Aki Ward

### #20 Nihongo Club

**PLACE:** Funakoshi Komin-kan

(5-22-23 Funakoshi, Aki-ku)

**DATE & TIME:** Every Saturday, 10:00 am – noon

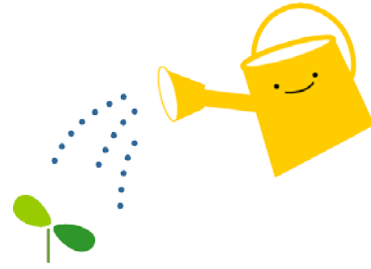
**TUITION:** Free

**ENROLLMENT:** Enroll any time you please

**INQUIRIES:** Funakoshi Komin-kan

Tel. 082-823-4261

**ACCESS:** It is a 7 min. walk from the JR Kaita-ichi (海田市)  
Station (JR Sanyo Line).



### ***INQUIRY: Hiroshima Peace Culture Foundation***

#### ***International Exchange Lounge***

*1-5 Nakajima-cho, Naka-ku, Hiroshima  
730-0811*

*E-mail: [golounge@pcf.city.hiroshima.jp](mailto:golounge@pcf.city.hiroshima.jp)*

*Tel. 082-247-9715 Fax. 082-242-7452*

*✦ Visit our website for information online. ✦*

*URL: <http://www.pcf.city.hiroshima.jp/ircd/Japanese/index.html>*

