

# HIRO CLUB NEWS

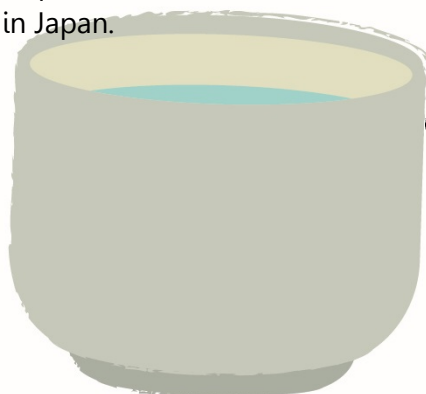
For your cultural life in Hiroshima

## 酒(日本酒) *saké (nihonshu)*

*Nihonshu* literally means 'Japanese liquor' of any type, but it's commonly used to refer to *saké*, now a familiar drink in the West. It has been produced in Japan for well over 1,500 years. *Saké* is really the best word to use, rather than 'rice wine'. Although yeast fermentation is involved in *saké* production, it's technically more like a brewing process. The finest water and short-grained rice are used and it has an average alcohol content of around 12 – 15%. Like wine, there is a vast variety of types, flavors and quality, but many people agree it is the best alcohol to go with Japanese cuisine. It can be served with ice, at room temperature, or warmed – which tends to speed up the alcoholic effect. Like wine, it's used a great deal in cooking, and like local ales in beer-producing countries, there are many local types of *saké* (*jizaké*). It also features in many Shinto religious ceremonies, such as weddings. (Abstracted from 『「日本の衣食住」まるごと事典』 p. 203, IBC パブリッシング)

Saijo, Higashi Hiroshima City is one of the most famous areas for great *saké* production in Japan. *Saké* is made from rice and water, and especially pure water is absolutely necessary to make good *saké*. Saijo is blessed with not only the ideal *saké*-brewing water, but also other natural conditions for *saké*-brewing. There are eight old *saké* breweries in Saijo. You can visit these *saké* breweries and learn about *saké*-brewing.

"2016 *Saké Matsuri* (festival)" will be held on October 8 & 9 in Saijo (see [Seasonal Event Information](#) section for more information). You can taste about 1,000 kinds of *saké* from around Japan at the festival (admission tickets are required). Please take this chance and enjoy *saké* culture in Japan.



October 2016



# October 2016

- ★ *City Office Notices*
- ★ *Hiroshima Peace Culture Foundation News*
- ★ *Movie Theaters*
- ★ *Bilingual TV Programs*
- ★ *Concerts & Plays*
- ★ *Museums*
- ★ *Sports*
  - *Hiroshima Toyo Carp Schedule 2016*
  - *Sanfrecce Hiroshima FC Game Schedule 2016*
  - *Hiroshima Dragonflies 2016 – 2017 B2 League*
- ★ *Events*
  - *Seasonal Event Information*
  - *Municipal Facilities*
- ★ *Lounge & Library*
  - *Library News*
  - *Trio-phone Service*  
(multilingual interpretation over the telephone)
  - *Assisting with International Cooperation*
    - *Garbage Disposal*
- ★ *Japanese Language Classes in Hiroshima City*

**Hiroshima Peace Culture Foundation  
International Exchange Lounge**

1-5 Nakajima-cho, Naka-ku, Hiroshima 730-0811

E-mail: [golounge@pcf.city.hiroshima.jp](mailto:golounge@pcf.city.hiroshima.jp)

Tel. 082-247-9715 Fax. 082-242-7452

★ Visit the HIRO CLUB NEWS WEBSITE for information online. ★

URL: <http://www.pcf.city.hiroshima.jp/ired/joho/hiroclub%2001.html>

# City Office Notices

City Office Notices contains selected information from the Hiroshima City Newsletter, *ひろしま市民と市政 Hiroshima Shimin to Shisei*. City Office Notices is published twice a month and available in print at the International Exchange Lounge, and online at our website: <http://www.pcf.city.hiroshima.jp/ircd/joho/hiroclub%2001.html>

October 1, 2016

## Topics

- \* Municipal Sports Facilities Free Admission on October 10 (Sports Day)
- \* Garbage Collection for October 10
- \* Minimum Wage in Hiroshima Prefecture Will Change from October 1
- \* Dermatology Free Consultation
- \* Free Counseling for Mental Health
- \* Free Counseling for Legal Affairs
- \* Hepatitis B Vaccine for Newborns Available for Free
- \* Call for Donations for the Victims of Typhoon 10

## Municipal Sports Facilities

### Free Admission on October 10 (Sports Day)

体育の日10月10日(祝)スポーツ施設無料開放(P5)

Ward Sports Centers, Yoshijima, Shinonome & Dejima Indoor Swimming Pools, Ujina & Yuki *Taiikukan* (Gymnasium), Kurhaus Yunoyama (Service fee (50 yen) is required for people age 12 and older. No towel rental.)

**INQUIRIES:** *Sports Kyokai* (Sports Association) Tel. 243-0578 Fax. 243-3641

## Garbage Collection for October 10

10月10日(祝・月)の家庭ゴミの収集(P4)

On Monday, October 10, garbage collection will be carried out as scheduled.

**INQUIRIES:** *Gyomu Daiichi Ka* (Operation Division I) Tel. 504-2220 Fax. 504-2229

## Minimum Wage in Hiroshima Prefecture Will Change from October 1

最低賃金が変わりました(P5)

Hiroshima Prefecture's minimum wage will increase to 793 yen per hour. This applies to all workers regardless of age, gender and employment system.

**INQUIRIES:** *Hiroshima Rodo Kyoku* (Labor Bureau), Wage Section Tel. 221-9244 Fax. 221-9252

Edited and published by the Hiroshima Peace Culture Foundation  
International Affairs Department, International Relations and Cooperation Division  
Tel: (082) 242-8879, Fax: (082) 242-7452, E-mail: [internat@pcf.city.hiroshima.jp](mailto:internat@pcf.city.hiroshima.jp)  
International Exchange Lounge  
Tel: (082) 247-9715, E-mail: [golounge@pcf.city.hiroshima.jp](mailto:golounge@pcf.city.hiroshima.jp)  
Website: <http://www.pcf.city.hiroshima.jp/ircd/english/index.html>  
編集・発行 公益財団法人広島平和文化センター国際部国際交流・協力課

## Dermatology Free Consultation

「皮膚の日」皮膚科無料相談会(P4)

Japanese Only - Please bring a Japanese speaking person if necessary.

**DAY & TIME:** Sunday, October 16 9:00 am – 11:30 am

**PLACE:** *Kenko Zukuri Center* (Health Promotion Center)  
(3-8-6 Senda-machi, Naka-ku)

**CONSULTATION:** Skin troubles (with a dermatologist)

**INQUIRIES:** *Kenko Zukuri Center* (Health Promotion Center) Tel. 243-2630 Fax. 241-0414

## Free counseling for Mental Health

こころの健康よろず相談(P4)

Japanese Only - Please bring a Japanese speaking person if necessary.

**DAY & TIME:** Sunday, October 23 10:00 am – 3:30 pm

**PLACE:** *Shohi Seikatsu Center* (Hiroshima City Consumer Affairs Center)  
(AQ'A Hiroshima Center 8F (6-27 Moto-machi, Naka-ku))

**COUNSELING:** With a psychiatrist

(Telephone counseling is also available on the day: Tel. 221-1251)

**INQUIRIES:** *Seishin Hoken Fukushi Center* (Mental Health & Welfare Center) Tel. 245-7731 Fax. 245-9674

## Free Counseling for Legal Affairs

法律などに関する無料相談(P5)

Japanese Only - Please bring a Japanese speaking person if necessary.

Counseling	Date & Time	Place	Inquiries
Family matters, everyday issues	Fri., Oct. 14 10am – 3:30pm (Available on a first-come, first-served basis)	AQ'A Hall (AQ'A Hiroshima Center 8F, 6-27 Moto-machi, Naka-ku)	<i>Kan-i Saiban-sho</i> (Summary Court) Tel. 502-1389
Inheritance, borrowing or lending money, tax, and legal troubles related to daily life	Tue., Oct. 18 10am – 3:30pm (Available on a first-come, first-served basis)	City Hall	<i>Shimin Sodan Center</i> (Citizens Consultation Center) Tel. 504-2120 Fax. 504-2121
Guardian of adults with disabilities	Sun., Oct. 23 10am – 4pm	Telephone Counseling Tel. 511-7196	<i>Shiho-shoshi Kai</i> (Judicial Scrivener Association) Tel. 221-5345 Fax. 223-4382
	Sun., Oct. 23 10am – 5pm (Required reservation by telephone (Tel. 511-0230))	<i>Shihoshoshi Kaikan</i> (6-69 Kami-hatchobori, Naka-ku)	

# Hepatitis B Vaccine for Newborns Available for Free

**B型肝炎予防接種が無料になります(P2)**

Teiki Sesshu

From October 1, Hepatitis B Vaccine has been added to the list of 定期接種 (recommended vaccines) that are routinely offered for free if eligible. Vaccination coupons will be sent to eligible persons. Try to have your child vaccinated on time and to protect against serious diseases.

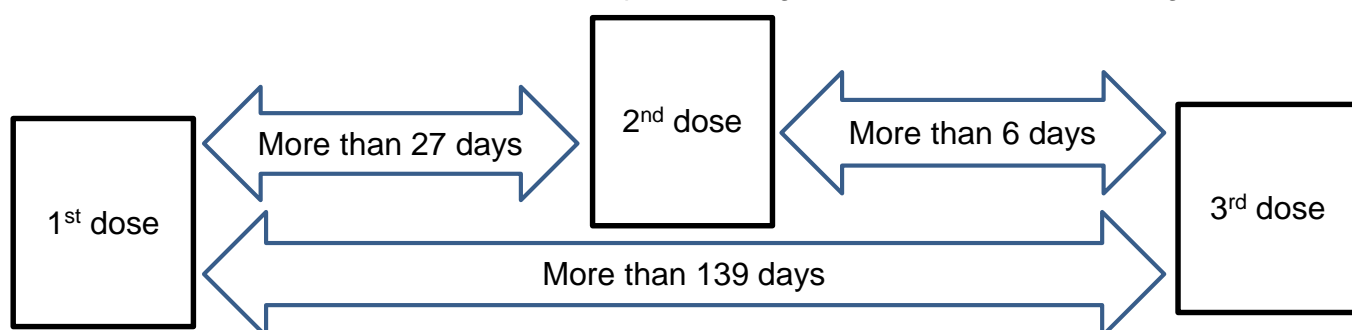
Hepatitis B is a disease caused by a virus that attacks the liver. Children infected early in life can be infected chronically and develop cirrhosis and/or liver cancer. The Hepatitis B vaccine is effective at preventing hepatitis B virus infection. Please stay on the track of the recommended vaccination schedule and protect your child.

**ELIGIBILITY:** Infants who were born on or after April 1, 2016 and under 1 year old.

(Infants who are already take Hepatitis B Vaccinations to prevent infection from mother to child are not eligible.)

## VACCINATION SCHEDULE:

A 3 dose vaccination schedule should be completed during 2 months and 9 months of age as follows:



It takes at least 5 months to complete the schedule and your child is eligible until 1 year old. If your child was born in April or May 2016, you should have your child receive the 1<sup>st</sup> dose as soon as possible.



Boshi Kenko Techo

**BRING:** Your 母子健康手帳 (Maternal & Child Health Handbook), Health Insurance Card or other document that can be used as proof of your address and birthday, and the vaccination coupon sent to your house

## INQUIRIES:

Hoken Iryo Ka (Public Health & Medical Service Division) Tel. 504-2622 Fax. 504-2258

Hoken Center (Public Health Center):

Ward	Telephone	Fax	Ward	Telephone	Fax
Naka	504-2528	504-2175	Asaminami	831-4942	870-2255
Higashi	568-7729	264-5271	Asakita	819-0586	819-0602
Minami	250-4108	254-9184	Aki	821-2809	821-2832
Nishi	294-6235	233-9621	Saeki	943-9731	923-1611

Edited and published by the Hiroshima Peace Culture Foundation  
 International Affairs Department, International Relations and Cooperation Division  
 Tel: (082) 242-8879, Fax: (082) 242-7452, E-mail: [internat@pcf.city.hiroshima.jp](mailto:internat@pcf.city.hiroshima.jp)  
 International Exchange Lounge  
 Tel: (082) 247-9715, E-mail: [golounge@pcf.city.hiroshima.jp](mailto:golounge@pcf.city.hiroshima.jp)  
 Website: <http://www.pcf.city.hiroshima.jp/ircd/english/index.html>  
 編集・発行 公益財団法人広島平和文化センター国際部国際交流・協力課

## Call for Donations for the Victims of Typhoon 10

台風 10 号などで被災された方々のために義援金にご協力ください(P3)

In order to provide financial aid to the victims of the typhoon in Iwate prefecture, Hiroshima City asks for your donations. Donation boxes are set up at municipal offices including the city hall and ward offices. All proceeds will be donated to the Japan Red Cross Society to help disaster area efforts.

**PERIOD:** Until Monday, October 31

**INQUIRIES:** *Chiiki Fukushi Ka* (Regional Welfare Division) Tel. 504-2137 Fax. 504-2169



# Hiroshima Peace Culture Foundation News

Event schedules are subject to change. Please contact event organizers to confirm listed information.

October 2016

## Chongqing Day Hiroshima Sister City and Friendship City Event (No admission fee, no reservation required)

Organized by the 2016 Chongqing Day Event Executive Committee

**DATE & TIME:** Sunday, October 23, 10:00 pm – 3:30 pm

**PLACE:** JMS Aster Plaza (4-17 Kako-machi, Naka-ku, Hiroshima)

### CONTENT:

- \* Exhibition on Chongqing
- \* Free Chinese cake tasting (for first 200 guests)
- \* Stage events (will start from 1:30 pm): opening ceremony, performances, Chinese music concert

**INQUIRIES:** International Relations and Cooperation Division

Tel. 242-8879 E-mail: [internat@pcf.city.hiroshima.jp](mailto:internat@pcf.city.hiroshima.jp)

## CIR Question & Answer Day

Are you looking for advice about Hiroshima?

Come in for a chat with our C.I.R., Benjamin Swallow!

**DATE & TIME:** Wednesday, October 26, 1:00 pm – 3:30 pm

**PLACE:** International Exchange Lounge

(International Conference Center Hiroshima 1F, 1-5 Nakjima-cho, Naka-ku)

**RESERVATIONS ARE REQUIRED:** Reservations can be made in person or by telephone at the International Exchange Lounge TEL: 082-247-9715 (Lounge open hours 9:00 am – 6:00 pm)

☺ Check the flyer below for more information [PDF, 112KB, 1 page]:

<http://www.pcf.city.hiroshima.jp/ircd/english/lounge/Advice%20about%20hiroshima%20by%20Benjamin.pdf>

## Honolulu Day Hiroshima Sister City and Friendship City Event (No admission fee, no reservation required)

Organized by the 2016 Honolulu Day Event Executive Committee

**DATE & TIME:** Saturday, November 5, 1:30 pm – 4:00 pm

**PLACE:** Yale Yale A-Kan B2F Hiroshima Station South Exit Development

(9-1 Matsubara-cho, Minami-ku)

### CONTENT:

- \* Free Hawaiian coffee / fruit juice tasting
- \* Lei construction lesson
- \* Hawaiian vendors
- \* Stage events: opening ceremony, Hula dance performance, Hawaiian music concert

Edited and published by the Hiroshima Peace Culture Foundation  
International Affairs Department, International Relations and Cooperation Division  
Tel: (082) 242-8879, Fax: (082) 242-7452, E-mail: [internat@pcf.city.hiroshima.jp](mailto:internat@pcf.city.hiroshima.jp)  
International Exchange Lounge  
Tel: (082) 247-9715, E-mail: [golounge@pcf.city.hiroshima.jp](mailto:golounge@pcf.city.hiroshima.jp)  
Website: <http://www.pcf.city.hiroshima.jp/ircd/english/index.html>  
編集・発行 公益財団法人広島平和文化センター国際部国際交流・協力課

**INQUIRIES:** International Relations and Cooperation Division  
Tel. 242-8879 E-mail: [internat@pcf.city.hiroshima.jp](mailto:internat@pcf.city.hiroshima.jp)

## 2016 International Festival

(Free Entry)

A variety of international exchange and cooperation booths and events will be held and participants are sure to get in touch with different cultures! Ethnic foods, folk crafts & an international bazaar, etc. are available. Come join us!

For details, please check our Facebook, <http://www.facebook.com/international.festival.hiroshima> or flyer below for more information:

1. <http://www.pcf.city.hiroshima.jp/ircd/info/28kyouryokunohi-soto.pdf> [PDF, 1.09MB, 1page]
2. <http://www.pcf.city.hiroshima.jp/ircd/info/28kyouryokunohi-naka.pdf> [PDF, 1.28MB, 1 page]

**DATE & TIME:** Sunday, November 20 10:00 am – 4:00 pm

**PLACE:** Kokusai Kaigijo (International Conference Center Hiroshima) and Peace Memorial Park

**CONTENT:** Ethnic food stalls, workshops, culture and information exchange meetings, stage performances, free consultation regarding foreign resident visas, etc.

**INQUIRIES:** International Relations and Cooperation Division  
Tel. 242-8879 E-mail: [internat@pcf.city.hiroshima.jp](mailto:internat@pcf.city.hiroshima.jp)

## The East Building is closed until February 2017.

Due to the renovation works, the exhibition rooms of the Peace Memorial Museum East Building are closed until February 2017. Currently, the Main Building is open to visitors. We apologize for any inconvenience that this may cause and ask for your understanding and cooperation in this matter. The location of the entrance remains in the East Building. The summary panels of the closed East Building are displayed in the gallery of the Main Building.

Information on other museum facilities is as follows.

- Coin-Lockers: Available
- Audio Guide: Available for the Main Building.
- Museum Shop: A temporary museum shop is set up on the 1<sup>st</sup> floor of the East Building.
- Library: Operating under regular hours
- Rest Space / Café: Operating under regular hours

**INQUIRIES:** Curatorial Division, Hiroshima Peace Memorial Museum Tel. 241-4004

## Come and Listen to a Talk by an A-bomb Legacy Successor

As the A-bomb survivors age, the City of Hiroshima has started a three-year training program for official A-bomb Legacy Successors to ensure that the A-bomb survivors' experiences and desires for peace are faithfully inherited and shared with as many people as possible. A talk by successors is now open to the public without charge, in English or Japanese. (Note: Talks are NOT delivered by A-bomb survivors.)

**SCHEDULE:** 11:00am – noon (Japanese)

12:30pm – 1:30pm (Japanese)

2:00pm – 3:00pm (English)

(Talks are unavailable on days when the Hiroshima Peace Memorial Museum is closed)

**VENUE:** Video Theater, 1<sup>st</sup> Floor, East Building of the Hiroshima Peace Memorial Museum

Edited and published by the Hiroshima Peace Culture Foundation  
International Affairs Department, International Relations and Cooperation Division  
Tel: (082) 242-8879, Fax: (082) 242-7452, E-mail: [internat@pcf.city.hiroshima.jp](mailto:internat@pcf.city.hiroshima.jp)  
International Exchange Lounge  
Tel: (082) 247-9715, E-mail: [golounge@pcf.city.hiroshima.jp](mailto:golounge@pcf.city.hiroshima.jp)  
Website: <http://www.pcf.city.hiroshima.jp/ircd/english/index.html>  
編集・発行 公益財団法人広島平和文化センター国際部国際交流・協力課



**TALK CONTENT:**

- An A-bomb survivor's experience and his/her desire for peace.
- Realities of the A-bombing (wartime life in Japan, outline of the A-bomb damage, A-bomb's impact on human bodies, etc.)
- Successor's desire for peace

**INQUIRIES:** Outreach Division, Hiroshima Peace Memorial Museum  
Tel. 242-7828 E-mail: [keihatsu@pcf.city.hiroshima.jp](mailto:keihatsu@pcf.city.hiroshima.jp)

## **Special Exhibition: "Memoirs of the Atomic Bombing: The Earliest Accounts of the Hiroshima A-bomb"**

**PERIOD:** Friday, January 1 – Wednesday, December 28, 2016

**PLACE:** Hiroshima National Peace Memorial Hall for the Atomic Bomb Victims, B1

**ADMISSION:** Free

**INQUIRIES:** Hiroshima National Peace Memorial Hall for the Atomic Bomb Victims  
Tel. 543-6271 Fax. 543-6273

# Movie Theaters

October 2016



Here is a general list of movies being shown in theaters around Hiroshima. Due to unpredictable changes in scheduling, listings are subject to change without notice. Foreign films are usually in their original language with Japanese subtitles. When not specified, the admission is **¥1,800** for adults. Theaters offer various kinds of admission discount services, so please inquire at each theater for more information.

## SALON CINEMA

[Hiroshima Toei Plaza Bldg. 8F, 16-10 Hatchobori,  
Naka-ku / Tel: 082-962-7772 /  
URL: <http://www.johakyu.co.jp/>]

- Until Oct. 28 **Tudo que Aprendemos Juntos / The Violin Teacher** / '15 Brazil  
Oct. 8 – 21 **Microbe et Gasoil** / '15 France  
Oct. 15 – 21 **Song of the Sea** / '14 Ireland, Luxembourg, Belgium, France, Denmark  
Oct. 15 – 28 **Die Abhandene Welt / The Misplaced World** / '16 Germany  
Oct. 22 – 28 **Mandariinid / Tangerines** / '13 Estonia, Georgia  
From Oct. 22 **Seymour: An Introduction** / '14 USA  
From Oct. 22 **High Strung** / '16 USA, Romania

## CINE TWIN

[Apex2 BF, 2-22 Hondori, Naka-ku / Tel : 082-241-7711 /  
URL: <http://www.johakyu.co.jp/>]

★ CINE TWIN will be closed on October 31. ★

- Oct. 1 – 7 **Les Parapluies de Cherbourg / The Umbrellas of Cherbourg** / '63 France  
Oct. 1 – 7 **Taxi Driver** / '76 USA  
Oct. 1 – 14 **Leon** / '94 France, USA  
Oct. 8 – 14 **My Fair Lady** / '64 USA  
Oct. 15 – 24 **The Way We Were** / '73 USA  
Oct. 22 – 31 **Le Fabuleux Destin d'Amélie Poulain** / '01 France  
Oct. 22 – 31 **Intouchables** / '11 France  
Oct. 25 – 31 **Buena Vista Social Club** / '99 Germany, USA, France, Cuba  
Oct. 25 – 31 **Adieu l'ami / Farewell, Friend** / '68 France

## HATCHOZA

[Fukuya Department Store Hatchobori 8F,  
6-26 Ebisu-cho, Naka-ku / Tel: 082-546-1158 /  
URL: <http://www.johakyu.co.jp/>]

- Until Oct. 7 **My Love, Don't Cross That River** / '14 Korea  
Until Oct. 7 **Jag ar Ingrid / Ingrid Bergman in Her Own Words** / '15 Sweden  
Oct. 8, 10 & 12 **Ludwig** / '72 Italy, West Germany, France  
Oct. 9, 11 & 13 **Il Gattopardo / The Leopard** / '63 Italy, France  
From Oct. 14 **Genius** / '15 UK

## YOKOGAWA CINEMA

Tel : 231-1001

[3-1-12 Yokogawa-cho, Nishi-ku / Tel: 082-231-1001 /  
URL: <http://yokogawa-cine.jugem.jp/>]

- Oct. 2 – 21 **Paths of the Soul** / '15 China  
Oct. 2 – 14 **Cavalo Dinheiro / Horse Money** / '14 Portugal  
Oct. 8 – 31 **The Last Reel** / '14 Cambodia  
★ Except Oct. 16, 22 & 27 – 30  
Oct. 15 – 31 **Der Atmende Gott: Reise Zum Ursprung des Modernen**  
★ Except Oct. 29 **YOGA** / '11 Germany, India

## AEON CINEMA HIROSHIMA

[Hiroshima Danbara Shopping Center 6F, 1-3-52  
Danbara-minami, Minami-ku / Tel : 082-261-3770 / URL:  
<http://www.aeoncinema.com/cinema/hiroshima/>]

- From Sept. 10 **Suicide Squad** / '16 USA  
From Sept. 24 **Sully** / '16 USA  
From Oct. 15 **Self/Less** / '15 USA  
Oct. 22 – 28 **One Way Trip** / '15 Korea  
From Oct. 28 **Inferno** / '16 USA  
From Oct. 29 **P.K.** / '14 India  
From Nov. 23 **Fantastic Beasts and Where to Find Them** / '16 UK, USA



**109 CINEMAS**

[Alpark 3F (north bldg.), 4-7-1 Kusatsu-minami, Nishi-ku  
/ Tel: 05700-002-109 /  
URL: <http://www.109cinemas.net/Hiroshima/>]

From Sept. 9 **Gods of Egypt** / '16 USA  
From Sept. 10 **Suicide Squad** / '16 USA  
From Sept. 17 **The BFG** / '16 USA  
From Sept. 24 **Sully** / '16 USA  
From Oct. 1 **I Saw the Light** / '15 USA  
From Oct. 7 **Jason Bourne** / '16 USA  
From Oct. 21 **Star Trek Beyond** / '16 USA  
From Oct. 22 **Jane Got a Gun** / '16 USA  
From Oct. 28 **Inferno** / '16 USA  
From Oct. 29 **Bridget Jones's Baby** / '16 UK

**TOHO CINEMAS MIDORII**

[Fuji Grand 3F, 1-5-2 Midorii, Asaminami-ku / Tel : 082-831-8060 / URL: <http://www.tohotheater.jp/>  
Adults-¥1,800, University students-¥1,500, From preschoolers (3 years old and under) to- High school students-¥1,000,

From Sept. 1 **Now You See Me 2** / '16 USA  
From Sept. 10 **Suicide Squad** / '16 USA  
From Sept. 22 **The Beatles: Eight Days a Week – The Touring Years** / '16 UK  
From Sept. 24 **Sully** / '16 USA  
From Oct. 7 **Jason Bourne** / '16 USA  
From Oct. 28 **Inferno** / '16 USA

**HIROSHIMA WALD 11**

[AEON Mall Hiroshima Fuchu 4F, 2-1-1 Osu, Fuchu-cho, Aki-gun / Tel : 082-561-0600 /  
URL: <http://wald11.com/index.html>]

From Sept. 1 **Now You See Me 2** / '16 USA  
From Sept. 9 **Gods of Egypt** / '16 USA  
From Sept. 10 **Suicide Squad** / '16 USA  
From Sept. 17 **The BFG** / '16 USA  
From Sept. 24 **Mechanic: Resurrection** / '16 USA  
From Sept. 24 **Sully** / '16 USA  
From Oct. 1 **Me Before You** / '16 USA  
From Oct. 7 **Jason Bourne** / '16 USA  
From Oct. 21 **Star Trek Beyond** / '16 USA  
From Oct. 28 **Inferno** / '16 USA  
From Oct. 29 **Bridget Jones's Baby** / '16 UK  
From Nov. 23 **Fantastic Beasts and Where to Find Them** / '16 UK, USA

**Movie Showings at 10am in the Morning**

Sept. 24 – Oct. 7 **Dead Poets Society** / '89 USA  
Oct. 8 – 21 **Shichinin no Samurai** / '54 Japan  
Oct. 22 – Nov. 4 **Il Buono, Il Brutto, Il Cattivo** / '66 Italy

Nov. 5 – 18

Nov. 19 – Dec. 2

Dec. 3 – 16

Dec. 17 – 30

Dec. 31 – Jan. 13

Jan. 14 – 27

Jan. 18 – Feb. 10

Feb. 11 – 24

Feb. 25 – Mar. 10

Mar. 11 – 24

**The Pianist** / '02 France, Germany, Poland, UK

**Les Amants de Montparnasse** / '58 France  
**Suna no Utsuwa** / '74 Japan

**Vertigo** / '58 USA**我的父親母親 / The Road****Home** / '99 USA, China**那人 那人 那狗 / Postmen in the Mountains** / '99 China**To Kill a Mockingbird** / '62 USA**The Miracle Worker** / '62 USA**Ukigumo** / '55 Japan**Out of Africa** / '85 USA**T-JOY HIGASHI HIROSHIMA**

[Fuji Grand Higashi Hiroshima 3F, 4405 Misonou, Saijo-cho, Higashi Hiroshima-shi / Tel : 082-493-6779 / URL: <http://www.t-joy.net/site/hiroshima/index/html>]

From Sept. 1

From Sept. 10

From Sept. 24

From Oct. 7

From Oct. 21

From Oct. 28

From Nov. 23

**Now You See Me 2** / '16 USA**Suicide Squad** / '16 USA**Sully** / '16 USA**Jason Bourne** / '16 USA**Star Trek Beyond** / '16 USA**Inferno** / '16 USA**Fantastic Beasts and Where to Find Them** / '16 UK, USA

Please feel free to contact the International Exchange Lounge at 082-247-9715.

E-mail: [golounge@pcf.city.hiroshima.jp](mailto:golounge@pcf.city.hiroshima.jp)

October 2016

# Bilingual TV Programs



October 2016

#1: NHK Sogo	#4: Hiroshima TV
#2: NHK E Tele	#5: Home TV
#3: RCC	#8: TSS

◆ Some changes may occur because of special programming.

## NEWS

### Monday - Sunday

NHK News 7 / 7:00pm – 7:30pm (#1)

### Monday - Friday

News Watch 9 / 9:00pm – 10:00pm (#1)

## REGULAR PROGRAMS

### Thursday

TED / 11:00pm – 11:25pm (#2)

◆ Rerun: Mon., 12:45am – 1:10am

### Friday

Japanese Lesson / 1:35pm – 1:50pm (#2)

Through the Wormhole / 10:00pm – 10:45pm (#2) ◆ Except the 28<sup>th</sup>

### Saturday

Dramatic Earth (Documentary Program) /

7:00pm – 7:45pm (#2) ◆ Except the 29<sup>th</sup>

◆ Rerun: Mon., midnight – 12:45am

## DRAMAS

### Monday

不良笑花 / Miss No Good ('09 Taiwan) /

1:55am – 2:50am (#4) ◆ Until the 3<sup>rd</sup>

心娶女人 / Marry Me or Not? ('15 Taiwan) /

1:25am – 2:25am (#4) ◆ From the 10<sup>th</sup>

### Wednesday

K. C. Undercover ('15 USA) / 7:25pm – 7:50pm (#2)

### Saturday

The Thundermans ('13 USA) / 6:25pm – 6:50pm (#2)

### Sunday

War & Peace ('15 UK) / 11:00pm – 11:50pm (#1)

## ANIMATIONS

### Friday

Sushi Town / 3:55pm – 4:00pm (#2)

### Saturday

Curious George / 8:35am – 9:00am (#2)

Thunderbirds Are Go / 5:05pm – 5:30pm (#1)

◆ Until the 8<sup>th</sup>

SpongeBob SquarePants / 6:00pm – 6:25pm

(#2) ◆ Until the 1<sup>st</sup>

The Penguins of Madagascar / 6:00pm – 6:25pm (#2) ◆ From the 8<sup>th</sup>

### Sunday

Thomas & Friends / 5:30pm – 5:50pm (#2)

## MOVIES

2<sup>nd</sup> The Vanishing / '93 USA / 1:53am-3:45am (#3)

9<sup>th</sup> Drop Zone / '94 USA / 1:53am-3:45am (#3)

16<sup>th</sup> Rampage: Capital Punishment / '14 Canada, Germany / 1:50am-3:45am (#8)

16<sup>th</sup> The Yards / '00 USA / 1:53am-3:45am (#3)

28<sup>th</sup> The Da Vinci Code / '06 USA / 9:00pm-11:50pm (#8)

29<sup>th</sup> Angels and Demons / '09 USA / 9:00pm-11:30pm (#8)

30<sup>th</sup> The Accused / '88 USA / 1:53am-3:45am (#3)

30<sup>th</sup> Patriot Games / '92 USA / midnight (#8)

## SPORTS

### Football

■ 2018 FIFA World Cup Russia: Asian Qualifiers – Road to Russia (#5) ◆ Broadcasted in Japanese only

6<sup>th</sup> Japan x Iraq / 7:00pm-9:35pm

11<sup>th</sup> Japan x Australia / 5:45pm-9:48pm

### Figure Skating

■ ISU Grand Prix of Figure Skating 2016: Progressive Skate America (#5)

◆ Broadcasted in Japanese only

22<sup>nd</sup> 6:56pm – 8:54pm

23<sup>rd</sup> 6:57pm – 8:54pm

■ ISU Grand Prix of Figure Skating 2016: Skate Canada International (#5)

◆ Broadcasted in Japanese only

29<sup>th</sup> 6:56pm – 8:54pm

30<sup>th</sup> 6:57pm – 8:54pm



Please feel free to contact to the International Exchange Lounge at 082-247-9715.

E-Mail: [golounge@pcf.city.hiroshima.jp](mailto:golounge@pcf.city.hiroshima.jp)

October 2016

# Concerts & Plays



## Ticket Offices

- ① EDION Play Guide (*Honkan*, B1F) (Kamiya-cho, Naka-ku; Tel. 247-5111)
- ② YAMAHA Music (Kamiya-cho, Naka-ku; Tel. 244-3779 Closed on the 1<sup>st</sup> & the 3<sup>rd</sup> Wednesdays)
- ③ Hiroshima Yume Plaza (Hondori, Naka-ku; Tel. 544-1122 Closed on Wednesdays)
- ④ Kawai Music Shop (Horikawa-cho, Naka-ku; Tel. 243-9291 Closed on Tuesdays)
- ⑤ Fukuya Department Store, Hatchobori (7F) (Ebisu-cho, Naka-ku; Tel. 246-6111)
- ⑥ Fukuya Department Store, Hiroshima Station (7F) (Matsubara-cho, Minami-ku; Tel. 568-3111)
- ⑦ Alpark Tenmaya (3F) (Inokuchi-myoin, Nishi-ku; Tel. 501-1111)
- ⑧ Hiroshima Arts Gakki (Hatchobori, Naka-ku; Tel. 227-6601)

Date / Starting Time (Opening Time) / Venue / Ticket Price / Tickets Go on Sale Date / Ticket Offices / Inquiries

♪ Event schedules are subject to change.

Please contact the event office before you go. ♪

## October

### ★ “The History of Music” Concert by Riberade

1<sup>st</sup> Sat. / 2:00pm (1:30pm) / Aki Kumin Bunka Center / ¥500 (all non-reserved seats) / Now on sale / ①, JMS Aster Plaza, Kumin Bunka Centers / Hiroshima-shi Bunka Zaidan 082-244-0750  
 ♪ Riberade is an ensemble group consisting of a piano and two violins.

### ★ Chisako Takashima & 12 Violinists: MUSE ~Best 12 Harmony~

1<sup>st</sup> Sat. / 2:30pm (2:00pm) / Ueno Gakuen Hall / S-¥6,000 A-¥5,000 / Now on sale / ①⑤⑥⑦, Lawson, Ticket PIA, Hatsukaichi Bunka Hall Sakurapia, e+ / HOME Event Center 082-221-7116 (Mon. – Fri., 10:00am – 5:00pm); Shimizu Geino Kikaku 082-292-0080 (Mon. – Fri., 10:00am – 5:00pm)  
 ♪ Piano: Aki Muramatsu

### ★ Music Group Fermata: The 9<sup>th</sup> Regular Concert: “One Day More” from Les Misérables

① 1<sup>st</sup> Sat. ② 2<sup>nd</sup> Sun. / ① the 1<sup>st</sup>: 5:30pm (5:00pm) ② the 2<sup>nd</sup>: ① 12:15pm (11:45am) ② 4:30pm (4:00pm) / Higashi Kumin Bunka Center / Advance: Adults-¥3,700 Children-¥2,800; At the door: Adults-¥3,900 Children-¥2,800 / Please ask the concert organizer for ticket information. / Music Group Fermata 080-5757-4618

### ★ The 469<sup>th</sup> Pipe Organ Concert

2<sup>nd</sup> Sun. / 4:00pm – 5:00pm / Memorial Cathedral for World Peace / Free admission / Memorial Cathedral for World Peace 082-221-0621

### ★ Music from Nordic Countries (piano & trumpet concert)

4<sup>th</sup> Tue. / 7:00pm (6:15pm) / Hatsukaichi Bunka Hall Sakurapia / Advance-¥2,000 At the door-¥2,500 / Now on sale / Sakurapia / Hatsukaichi Bunka Hall Sakurapia 0829-20-0111

### ★ Drum TAO: – Bukyo – Odoru Wa Daiko

4<sup>th</sup> Tue. / 7:00pm (6:30pm) / JMS Aster Plaza / SS-¥7,000 S-¥6,000 A-¥4,500 / Now on sale / ①⑥, Ticket PIA, Lawson, e+ / Candy Promotion Hiroshima 082-249-8334 (Mon. – Fri., 11:00am – 6:30pm)  
 ♪ Taiko (a traditional Japanese Drum) art performance

### ★ Wiener Philharmoniker Week in Japan 2016: Zubin Mehta Conducts Wiener Philharmoniker

5<sup>th</sup> Wed. / 7:00pm (6:30pm) / Hiroshima Bunka Gakuen HBG Hall / S-¥33,000 A-¥29,000 B-¥24,000 C-¥19,000 / Now on sale / ①⑥, e+ / Hiroshima TV Event Information Center 082-249-1218 (Mon. – Fri., 10:00am – 6:00pm)  
 ♪ Piano: Rudolf Buchbinder

### ★ An Invitation to Traditional Japanese Performing Arts by Ebizo Ichikawa & Shido Nakamura

6<sup>th</sup> Thurs. / ① 4:00pm ② 5:00pm / Hiroshima Bunka Gakuen HBG Hall / S-¥12,000 A-¥10,000



Please feel free to contact the International Exchange Lounge at 082-247-9715.

E-mail: [golounge@pcf.city.hiroshima.jp](mailto:golounge@pcf.city.hiroshima.jp)

October 2016



/ Now on sale / ①⑤⑥⑦, Lawson, Ticket PIA, e+  
/ Shimizu Geino Kikaku 082-292-0080  
♪ *Kabuki* and classical Japanese dance performances

★ **Mozart Concert by Ryoko Mishima (piano) & Masaki Ueno (violin)**

6<sup>th</sup> Thurs. / 6:30pm (6:00pm) / Hatsukaichi Bunka Hall Sakurapia / ¥3,000 (all non-reserved seats) /  
Now on sale / Sakurapia / Hatsukaichi Bunka Hall Sakurapia 0829-20-0111

★ **Mariko Senju Violin Recital**

7<sup>th</sup> Fri. / 7:00pm (6:30pm) / Hatsukaichi Bunka Hall Sakurapia / Adults-¥4,000 High school students and under-¥2,000 / Now on sale / ①, Sakurapia, Chugoku Shimbun, Ticket PIA, Lawson /  
Hatsukaichi Bunka Hall Sakurapia 0829-20-0111

★ **Jake Shimabukuro Japan Tour 2016**

7<sup>th</sup> Fri. / 7:00pm (6:00pm) / Hiroshima Club Quattro / ¥7,000 / Now on sale / Lawson, e+, Ticket PIA / Yumebanchi Hiroshima 082-249-3571  
♪ This is an ukulele concert.

NEW!!

★ **The 41<sup>st</sup> Concert by Alumni Association of Kunitachi College of Music**

8<sup>th</sup> Sat. / 2:00pm (1:30pm) / Higashi Kumin Bunka Center / ¥1,500 / Please ask the concert organizer for ticket information. / 090-2866-0298 (Kanda)

★ **Hatsukaichi Music Festival:**

**Yuji Ohno & Lupintic Six – Lupin Jazz Live**

8<sup>th</sup> Sat. / 5:00pm (4:30pm) / Hatsukaichi Bunka Hall Sakurapia / ¥4,500 / ①, Ticket PIA, Lawson, Sakurapia / Now on sale / Hatsukaichi Bunka Hall Sakurapia 0829-20-0111

♪ "Lupin III" is a famous Japanese manga and anime TV series.

★ **Shinichi Kinoshita**

**Tsugaru Shamisen Concert**

9<sup>th</sup> Sun. / 2:00pm (1:30pm) / Hatsukaichi Bunka Hall Sakurapia / ¥2,500 / Now on sale / ①, Sakurapia, Lawson, Ticket PIA / Hatsukaichi Bunka Hall Sakurapia 0829-20-0111

♪ *Shamisen*, traditional Japanese guitar concert

★ **Yoshihiro Yoshikawa Cello Recital**

9<sup>th</sup> Sun. / 5:00pm (4:30pm) / Hatsukaichi Bunka Hall Sakurapia / ¥3,500 / Now on sale / ①⑥, Sakurapia, Ticket PIA, Lawson, e+, Seven-Eleven / Home Event Center 082-221-7116, Samon Promotion 06-6225-2237



★ **Hiroshima Symphony Orchestra: Masterpiece Concert ~ Autumn ~**

(Weber: *Der Freischütz*, Overture; Spohr: *Clarinet Concerto No. 2 in E-flat major Op. 57*; Mendelssohn: *Symphony No. 3 in A minor Op. 56 "Schottische"*)

10<sup>th</sup> Mon. / 3:00pm (2:00pm) / Hiroshima Kokusai Kaigijo (International Conference Center Hiroshima), Phoenix Hall / S-¥4,200 Pair tickets (S seats)-¥6,400 A-¥3,200 B-¥2,200 Students-¥1,500 (Students tickets are only sold at the Hiroshima Symphony Orchestra Office.) / Now on sale / ①⑤⑥⑦, JMS Aster Plaza, Chugoku Shimbun, Hiroshima Symphony Orchestra Office / Hiroshima Symphony Orchestra 082-532-3080  
E-mail: info@hirokyo.or.jp  
♪ Conductor & Clarinet: Paul Meyer

NEW!!

★ **Kana Onda Piano Recital**

10<sup>th</sup> Mon. / 2:00pm (1:30pm) / Hiroshima Kenmin Bunka Center / Adults-¥2,500 Students-¥2,000 (all non-reserved seats) / Now on sale / Hiroshima Kenmin Bunka Center, Hatsukaichi Bunka Hall Sakurapia, e+ / Tastatur Musik 0829-32-2055

★ **Koji Takaguchi (violin) & Yoshiko Ishikawa (piano) Duo Concert Vol. 7**

10<sup>th</sup> Mon. / 6:30pm (6:00pm) / Higashi Kumin Bunka Center / Adults-¥2,000 Students-¥1,000 / Please ask the concert organizer for ticket information. / 080-6318-3585 (Takaguchi), 090-6439-4426 (Ishikawa)

NEW!!

★ **Tadashi Sasaki Guitar Recital**

13<sup>th</sup> Thurs. / 6:45pm (6:30pm) / Higashi Kumin Bunka Center / Advance: Adults-¥2,500 Students-¥1,500; At the door: Adults-¥3,000 Students-¥1,500 / Please ask the concert organizer for ticket information. / Hiroshima Guitar Association 0829-38-4558 E-mail: bukky\_guit@yahoo.co.jp (Ibuki)

♪ Guest guitarist: Keiichiro Ishihara

★ **Sabastian Führlinger (viola) & Nanako Paul (piano) Duo Concert**

14<sup>th</sup> Fri. / 2:00pm (1:30pm) / Kure City Bunka Hall / ¥1,000 / Now on sale / Seven-Eleven / Kure City Bunka Hall 0823-25-7878

NEW!!

★ **Nothing But The Funk Japan Tour 2016**

14<sup>th</sup> Fri. / 7:00pm (6:00pm) / Hiroshima Club Quattro / ¥6,900 / Now on sale / ①, e+, Ticket PIA, Tower Records Hiroshima, Club Quattro / Hiroshima Club Quattro 082-542-2280

♪ <Members>

Eddie M. (sax); Karl Perazzo (percussion); Raymond McKinley (bass); Takashi Numazawa (drums); Joel Behrman (trombone & trumpet); Nate Mercereau (guitar); Toshiyuki Mori (keyboards)

Please feel free to contact the International Exchange Lounge at 082-247-9715.

E-mail: golounge@pcf.city.hiroshima.jp

October 2016



★ **Disney on Classic Magical Night 2016**

15<sup>th</sup> Sat. / 6:00pm (5:00pm) / Hiroshima Bunka Gakuen HBG Hall / S-¥8,300 A-¥6,700 / Now on sale / ①, Lawson, Ticket PIA, e+, Rakuten Ticket / UNION Music Office 082-247-6111

★ **Kaiji Moriyama Solo Dance Performance: KATANA**

15<sup>th</sup> Sat. / 6:00pm (5:30pm) / JMS Aster Plaza / ¥6,000 Students-¥4,500 ☆ Student seat number will be designated on the concert day. Student ID will be required. / Now on sale / ①, Lawson, Ticket PIA, Seven-Eleven, e+, JMS Aster Plaza / TSS Event Office 082-253-1010

NEW!!

★ **Ensemble DEMAIN (string orchestra): The 21<sup>st</sup> Regular Concert**

15<sup>th</sup> Sat. / 6:30pm (6:00pm) / Hiroshima Kenmin Bunka Center / ¥500 / Please ask the concert organizer for ticket information. / 082-254-6015 (Kojima), 082-284-5624 (Tokunaga)

★ **Chorale “Elisabeth, ma famille” Concert XIV**

16<sup>th</sup> Sun. / 2:00pm (1:30pm) / Elisabeth University of Music, Cecilia Hall / ¥1,000 (all non-reserved seats) / Please ask the concert organizer for ticket office information. / 082-258-3375 (Shinagawa)

★ **Hiroshima Happy New Ear 22: Marianna Shirinyan Piano Solo Concert**

17<sup>th</sup> Mon. / 7:00pm (6:30pm) / JMS Aster Plaza / Advance: adults-¥2,500 Students-¥1,500; At the door: Adults-¥3,000 Students-¥2,000 / Now on sale / ①⑥, Chugoku Shimbun, JMS Aster Plaza, Ticket PIA, Lawson / Hiroshima Opera & Music Promotion Committee 082-244-8000

★ **Piano Duo Concert**

20<sup>th</sup> Thurs. / 12:20pm – 1:00pm / Hatsukaichi Bunka Hall Sakurapia / Free admission / Hatsukaichi Bunka Hall Sakurapia 0829-20-0111

★ **Elisabeth University of Music: The 76<sup>th</sup> Regular Concert**

21<sup>st</sup> Fri. / 6:30pm (6:00pm) / Elisabeth University of Music, Cecilia Hall / ¥1,000 (all tickets are for non-reserved seats.) / Now on sale / Elisabeth University of Music, Ticket PIA / Elisabeth University of Music 082-225-8004

NEW!!

★ **The 3<sup>rd</sup> Trumpet Ensemble Concert**

21<sup>st</sup> Fri. / 6:30pm (6:00pm) / Nishi Kumin Bunka Center / ¥500 ☆ Free admission for elementary school students and under / Please ask the concert organizer for ticket information. / 090-2807-0740 E-mail: hbgtrumpet@gmail.com (Tasaki)

♪ This is a concert by the students majoring in trumpet at Hiroshima Bunka Gakuen University.

★ **Hiroshima Symphony Orchestra: The 364<sup>th</sup> Subscription Concert**

(*Rachmaninov: Piano Concerto No. 2 in C minor Op. 18; Berlioz: Symphonie Fantastique Op. 14*)

21<sup>st</sup> Fri. / 6:45pm (5:45pm) / Hiroshima Bunka Gakuen HBG Hall / S-¥5,200 A-¥4,700 B-¥4,200 Students-¥1,500 (Student tickets are only sold at the Hiroshima Symphony Orchestra Office.) / Now on sale / ①⑤⑥⑦, Ticket PIA, Lawson (convenience store), Chugoku Shimbun & Hiroshima Symphony Orchestra Office / Hiroshima Symphony Orchestra Office 082-532-3080 E-mail: info@hirokyo.or.jp

♪ Conductor: Kentaro Kawase / Piano: Marianna Shirinyan

★ **Cembalo & Guitar Concert**

22<sup>nd</sup> Sat. / 2:00pm (1:30pm) / Higashi Kumin Bunka Center / Adults-¥2,500 High school students and under-¥1,500 / Now on sale / ①, Higashi Kumin Bunka Center / 090-7508-2012 (Oda)

NEW!!

★ **Mnozil Brass “Yes Yes Yes”**

23<sup>rd</sup> Sun. / 2:00pm (1:30pm) / Hatsukaichi Bunka Hall Sakurapia / Adults: S-¥5,000 A-¥4,000; High school students and under: S-¥2,500 A-¥2,000 / Now on sale / ①, Sakurapia, Ticket PIA, Lawson / Hatsukaichi Bunka Hall Sakurapia 0829-20-0111

★ **Hawaiian Music and Fula Dance**

27<sup>th</sup> Thurs. / 6:30pm / Hiroshima Bunka Gakuen HBG Hall / A-¥5,500 B-¥4,800 Students-¥2,000 ☆ Student tickets are only sold at the door. Student ID Will be required. / Now on sale / ①⑥, Ticket PIA, Lawson, Seven-Eleven / MIN-ON Hiroshima 082-567-0585

★ **Flute Concord Hiroshima: The 24<sup>th</sup> Regular Concert**

28<sup>th</sup> Fri. / 6:45pm (6:15pm) / Elisabeth University of Music, Cecilia Hall / Advance: Adults-¥3,000 Students-¥1,500; At the door: Adults-¥3,500 Students-¥2,000 / Now on sale / ①⑧, Ticket PIA / 090-9508-0047 (Miyamoto)

★ **Ringo Starr and His All Star Band**

28<sup>th</sup> Fri. / 7:00pm (6:30pm) / Hiroshima Bunka Gakuen HBG Hall / S-¥15,000 A-¥14,000 / Lawson, e+, Ticket PIA / Now on sale / Yumebanchi Hiroshima 082-249-3571

♪ Tour members:

Steve Lukather (TOTO), Richard Page (ex. Mr. Mister), Gregg Rolie (ex. Santana, Journey), Todd Rundgren (ex. Nazzy, Utopia and The New Cars), Warren Ham (ex. Bloodrock, Kansas, and AD), Gregg Bissonette (ex. David Lee Roth)

Please feel free to contact the International Exchange Lounge at 082-247-9715.

E-mail: golounge@pcf.city.hiroshima.jp

October 2016

NEW!!

★ **The 7<sup>th</sup> CMA Charity Concert: Missiah**

30<sup>th</sup> Sun. / 4:00pm / Memorial Cathedral for World Peace / Adults-¥2,000 High school students and under-¥1,000 Preschoolers-¥300 (all non-reserved seats) / Please ask the concert organizer for ticket information. / Cecilia Music Academy 090-9970-7197 (Yokota; 9:00am-2:00pm) E-mail: cecilia-familyq@i.softbank.jp

♪ Charity bazaar will also be held at the church from 11:00am to 2:00pm on the day of.

NEW!!

★ **My Heart Concert Special 2016**

31<sup>st</sup> Mon. / 6:30pm (6:00pm) / Hiroshima Kokusai Kaigijo (International Conference Center Hiroshima), Phoenix Hall / Advance: Adults-¥2,700 Students-¥1,800 Pupils-¥1,000; At the door: Adults-¥3,000 Students-¥2,000 Pupils-¥1,200 / Now on sale / ①⑥, Chugoku Shimbun, Lawson / My Heart Concert Office 082-541-5901

**November**

NEW!!

★ **Tomoyasu Hotei: Maximum Emotion Tour ~ The Best for the Future ~**

1<sup>st</sup> Tue. / 7:00pm (6:30pm) / JMS Aster Plaza / ¥8,000 / Now on sale / ①⑥ / Candy Promotion Hiroshima 082-249-8334 (Mon. – Fri., 11:00am – 6:30pm)

♪ Tomoyasu Hotei is a Japanese rock guitarist.

★ **Taro Hakase Concert Tour 2016**

2<sup>nd</sup> Wed. / 6:30pm (6:00pm) / Hiroshima Bunka Gakuen HBG Hall / ¥7,800 / Now on sale / ①⑥, Lawson, Ticket PIA, e+ / Candy Promotion Hiroshima 082-249-8334

♪ Violin concert

★ **Jörg Demus Piano Recital**

(J. S. Bach: *aus dem Wohltemperierten Klavier, Band II*; L. v. Beethoven: *Sonate E-Dur, op. 109*; F. Chopin: *Ballade Nr. 3 As-Dur, op. 47*; J. Demus: *Sonate b-Moll, op. 35 "Hommage à Chopin"*; F. Chopin: *Barcarolle Fis-Dur, op. 60*)

2<sup>nd</sup> Wed. / 6:45pm (6:15pm) / Hatsukaichi Bunka Hall Sakurapia / Advance-¥3,000 At the door-¥3,500 (all non-reserved seats) / Now on sale / ①④, Sakurapia / 082-878-3991 (Okano), 082-872-4852 (Ishimaru)

NEW!!

★ **Mongolian National Morin Khuur Ensemble in Kure**

4<sup>th</sup> Fri. / 6:30pm (6:00pm) / Kure City Bunka Hall / ¥3,000 / Now on sale / ①⑥ / Kure City Bunka Hall 0823-25-7878

NEW!!

★ **Ensemble Hibiki: The 7<sup>th</sup> Concert**

7<sup>th</sup> Mon. / 7:00pm (6:30pm) / JMS Aster Plaza / Adults-¥3,000 Students-¥1,000 (all non-reserved seats) / Now on sale / ① / Ensemble Hibiki 090-9818-3849 (Kumazawa) E-mail: ens.hibiki@gmail.com

NEW!!

★ **Space Kelly – The Best of Space Kelly Japan Tour 2016!**

9<sup>th</sup> Wed. / 7:00pm (6:00pm) / Hiroshima Club Quattro / Advance-¥3,500 At the door-¥4,000 / Now on sale / ①, e+, Ticket PIA, Lawson, Tower Records Hiroshima, Stereo Records, Club Quattro / Hiroshima Club Quattro 082-542-2280

★ **Kyogen by Mansai Nomura**

11<sup>th</sup> Thurs. / ① 2:30pm ② 7:00pm / JMS Aster Plaza / S-¥4,500 A-¥3,000 B-¥2,000 Seats for wheel chair-¥3,000 / Now on sale / ①⑥, JMS Aster Plaza, Lawson, Ticket PIA / JMS Aster Plaza 082-244-8000

♪ This is a traditional Japanese performing art.

★ **Hiroshima Symphony Orchestra: The 365<sup>th</sup> Subscription Concert**

(Akira Ifukube: *Lauda Concertata*; Wagner: *Lohengrin*, *Prelude*; Wagner: *Tannhäuser*, *Overture and Bacchanale (Paris version)*; Wagner: *Tristan und Isolde*, *Prelude and Liebestod*)

11<sup>th</sup> Fri. / 6:45pm (5:45pm) / Hiroshima Bunka Gakuen HBG Hall / S-¥5,200 A-¥4,700 B-¥4,200 Students-¥1,500 (Student tickets are only sold at the Hiroshima Symphony Orchestra Office.) / Now on sale / ①⑤⑥⑦, Ticket PIA, Lawson (convenience store), Chugoku Shimbun & Hiroshima Symphony Orchestra Office / Hiroshima Symphony Orchestra Office 082-532-3080 E-mail: info@hirokyo.or.jp

♪ Conductor: Junichi Hirokami / Marimba: Noriko Tsukagoshi / Chorus: Elisabeth University of Music

★ **Classical Guitar Joint Concert**

11<sup>th</sup> Fri. / 7:00pm (6:30pm) / Higashi Kumin Bunka Center / Advance-¥1,000 At the door-¥1,500 / Please ask the concert organizer for ticket information. / bukkyy.guit@gmail.com (Ibuki), 090-2095-8545 (Matsue)

NEW!!

★ **Hiroshima Wind Orchestra: The 46<sup>th</sup> Regular Concert**

12<sup>th</sup> Sat. / 3:00pm (2:15pm) / Elisabeth University of Music, Cecilia Hall / Advance: Adults-¥2,800 University students and under-¥1,800; At the door: Adults-¥3,000 University students and under-¥2,000 (non-reserved seats) / Now on sale / ①②③ / Hiroshima Wind Orchestra Office 080-1647-5951

♪ Conductor: Kazuyoshi Akiyama

Please feel free to contact the International Exchange Lounge at 082-247-9715.

E-mail: golounge@pcf.city.hiroshima.jp

October 2016

★ **Sofia Solisten & Liya Petrova (violin)**

19<sup>th</sup> Sat. / 2:00pm (1:30pm) / JMS Aster Plaza / S-¥5,000 A-¥4,000 B-¥3,000 / ①⑥⑦, JMS Aster Plaza / Now on sale / HOME Event Center 082-221-7116 (Mon. – Fri., 10:00am – 5:00pm)

★ **Trio Note Concert**

19<sup>th</sup> Sat. / 2:00pm (1:30pm) / Hatsukaichi Bunka Hall Sakurapia / Adults-¥500 High school students and under-Free (all non-reserved seats) / Now on sale / ⑥, Sakurapia / Hatsukaichi Bunka Hall Sakurapia 0829-20-0111  
 ♪ Piano, violin & cello concert

NEW!!

★ **Arc-en-ciel Piano Concert 22<sup>nd</sup>: Haruo Uesugi Piano Recital**

19<sup>th</sup> Sat. / 3:00pm (2:30pm) / Hiroshima Kenmin Bunka Center / Advance: Adults-¥2,500 Students-¥1,000; At the door: Adults-¥2,999 Students-¥1,500 / Now on sale / ①④ / 090-7994-9286 (Doi), 090-4658-8813 (Makino)

★ **Hiroshima Shimin Orchestra: The 21<sup>st</sup> Regular Concert**

20<sup>th</sup> Sun. / 2:00pm (1:30pm) / Hiroshima Kokusai Kaigijo (International Conference Center Hiroshima), Phoenix Hall / ¥800 / Now on sale / ①⑥⑦⑧ / Hiroshima Shimin Orchestra 080-2929-6786 (Katsura)

NEW!!

★ **Aki Takahashi Piano Recital**

23<sup>rd</sup> Wed. / 2:00pm (1:20pm) / YMCA Kokusai Bunka Hall / Adults: Advance-¥3,000 At the door-¥3,500; High school students and under-¥1,500 / Please ask the concert organizer for ticket information. / Mimi no Sora 090-7574-3474 (from the evening) E-mail: mnos2015@excite.co.jp

★ **Hiromi Uehara the Trio Project: SPARK Japan Tour 2016**

23<sup>rd</sup> Wed. / 6:00pm (5:00pm) / Hiroshima Kokusai Kaigijo (International Conference Center Hiroshima), Phoenix Hall / S-¥7,100 A-¥6,070 / Now on sale / ⑥, Lawson, e+, Ticket PIA / Yumebanchi Hiroshima 082-249-3571

★ **Karen Takaguchi Marimba Concert**

24<sup>th</sup> Thurs. / ① 2:00pm (1:30pm) ② 7:00pm (6:30pm) / Nishi Kumin Bunka Center / Advance-¥1,500 At the door-¥2,000 (all tickets are for non-reserved seats) / Now on sale / JMS Aster Plaza, Kumin Bunka Centers / Nishi Kumin Bunka Center 082-234-1960 (9:00am – 9:00pm, closed on Mondays) ♪ Marimba, soprano (Yuko Ono) & saxophone (Yukari Uekawa) concert

★ **Hiroshima Opera Renaissance:**

**Suor Angelica & Gianni Schicchi (Italian libretto by G. Forzano & Composed by G. Puccini)**

① 26<sup>th</sup> Sat. ② 27<sup>th</sup> Sun. / 2:00pm (1:15pm) / JMS Aster Plaza / S-¥8,000 A-¥6,000 B-¥4,000 C-¥2,000 / Now on sale / Please ask the concert organizer for ticket office information. / Hiroshima Opera and Music Promotion Committee (inside JMS Aster Plaza) 082-244-8000

♪ This will be played in Italian with Japanese subtitles.  
 Orchestra: Hiroshima Symphony Orchestra

★ **Kobudo**

27<sup>th</sup> Sun. / 5:00pm (4:30pm) / Nishi Kumin Bunka Center / ¥5,000 (all tickets are for non-reserved seats) / Please ask the concert organizer for ticket information. / Fax: 082-229-3628 Tel: 090-3173-5161 E-mail: suikousya@proof.ocn.ne.jp

♪ *Kobudo* is an ensemble group consisting of a piano, a *shakuhachi* (traditional Japanese bamboo flute) and a cello.

Piano: Takeshi Senoo / *Shakuhachi*: Dozan Fujiwara / Cello: Nobuo Furukawa

**December**★ **Tokyo Ska Paradise Orchestra: 2016 Live House Tour “Paradise Has No Border”**

① 2<sup>nd</sup> Fri. ② 3<sup>rd</sup> Sat. / ① the 2<sup>nd</sup> – 7:00pm (6:15pm) ② the 3<sup>rd</sup> – 6:00pm (5:15pm) / Hiroshima Club Quattro / ¥5,500 / Now on sale / e+, Ticket PIA, Lawson / Candy Promotion Hiroshima 082-249-8334

NEW!!

★ **s\*\*t kingz: Wonderful Clunker**

8<sup>th</sup> Thurs. / 7:00pm (6:30pm) / JMS Aster Plaza / Adults-¥6,000 Students (advance tickets only)-¥4,500 ✧ Seat number for student ticket will be designated on the event day. Student ID is required. / Now on sale / ①⑥, Lawson, Ticket PIA, e+, Seven-Eleven / TSS 082-253-1010 (Mon. – Fri., 10:00am – 6:00pm)

♪ s\*\*t kingz is a dance team consisting of four men.

★ **Concert by Hiroshima Symphony Orchestra Members**

9<sup>th</sup> Fri. / 6:30pm (6:00pm) / Hatsukaichi Bunka Hall Sakurapia / Adults-¥1,500 High school students and under-¥500 / Now on sale / ⑥, Sakurapia / Hatsukaichi Bunka Hall Sakurapia 0829-20-0111

★ **St. Petersburg Chamber Ensemble: Christmas / Ave Maria**

13<sup>th</sup> Tue. / 7:00pm (6:30pm) / Hatsukaichi Bunka Hall Sakurapia / ¥4,500 / Now on sale / ①,

Please feel free to contact the International Exchange Lounge at 082-247-9715.

E-mail: golounge@pcf.city.hiroshima.jp

October 2016



Sakurapia / Hatsukaichi Bunka Hall Sakurapia  
0829-20-0111

NEW!!

★ **Siena Wind Orchestra Concert 2016**  
**conducted by Yutaka Sado**

15<sup>th</sup> Thurs. / 7:00pm (6:00pm) / Ueno Gakuen Hall  
/ Advance: S-¥7,000 A-¥5,800; At the door: S-¥7,500 A-¥6,300 / Now on sale / Please ask the concert organizer for ticket office information. / RCC 082-222-1133 (Mon. – Fri., 10:00am – 5:00pm)  
♫ Baritone: Kyu Won Han

27<sup>th</sup> Fri. / 6:45pm (5:45pm) / JMS Aster Plaza / S-¥5,200 A-¥4,200 B-¥3,200 Students-¥1,000 (Student tickets are only sold at the Hiroshima Symphony Orchestra Office.) / From Sun., November 27 (from Mon., November 28 at the Hiroshima Symphony Orchestra Office) / ①⑤⑥⑦, Ticket PIA, Lawson (convenience store), Chugoku Shimbun, Hiroshima Symphony Orchestra Office, JMS Aster Plaza / Hiroshima Symphony Orchestra Office 082-532-3080 E-mail: info@hirokyo.or.jp  
♫ Conductor: Kazuyoshi Akiyama  
Clarinet: Hideyo Shinagawa

## January, 2017

★ **Rintaro Akamatsu Piano Recital 2017**

8<sup>th</sup> Sun. / 2:00pm (1:30pm) / Nishi Kumin Bunka Center / Advance: Adults-¥2,500 High school students and under-¥1,500; At the door: Adults-¥3,000 High school students and under-¥2,000 / Now on sale / ②④, Kumin Bunka Centers (except Asakita Kumin Bunka Center), JMS Aster Plaza, Ticket PIA / Studio Imagine 082-541-0858

★ **Hiroshima Symphony Orchestra: The 366<sup>th</sup> Subscription Concert**

NEW!!

(*Sibelius: Violin Concerto in D minor Op. 47; Tchaikovsky: Symphony No. 3 in D major Op. 29 "Polish"*)

20<sup>th</sup> Fri. / 6:45pm (5:45pm) / Hiroshima Bunka Gakuen HBG Hall / S-¥5,200 A-¥4,700 B-¥4,200 Students-¥1,500 (Student tickets are only sold at the Hiroshima Symphony Orchestra Office.) / From Sun., November 20 (from Mon., November 21 at the Hiroshima Symphony Orchestra Office) / ①⑤⑥⑦, Ticket PIA, Lawson (convenience store), Chugoku Shimbun & Hiroshima Symphony Orchestra Office / Hiroshima Symphony Orchestra Office 082-532-3080 E-mail: info@hirokyo.or.jp  
♫ Conductor: Kenichiro Kobayashi / Violin: Alexandra Soumm

★ **Noh Performance: "Semimaru"**

22<sup>nd</sup> Sun. / 2:00pm (1:30pm) / JMS Aster Plaza / Adults-¥3,500 Senior & Junior high school students-¥1,000 / Now on sale / Ticket PIA (①⑥, Kobunkan Bookstore (Alpark & Kinzagai store), Poplar A. City store, Seven-Eleven) / Asobiza 090-4691-0856 (Yamashita) E-mail: asobiza@asobiza.com  
♫ This is a traditional Japanese performing art.

NEW!!

NEW!!

★ **Hiroshima Symphony Orchestra Discovery Series: "Gift"**

(*Toshio Hosokawa: <Metamorphosis> For Clarinet and String Orchestra with Percussion; Reger: Variations and Fugue on a Theme by Mozart Op. 132; Mozart: Symphony No. 40 in G minor K. 550*)

## February, 2017

★ **Jeff Beck Japan Tour**

NEW!!

4<sup>th</sup> Sat. / 6:30pm (5:30pm) / Ueno Gakuen Hall / S-¥12,000 A-¥11,000 / From Sat., October 22 / ①, Lawson, e+, Ticket PIA / Yumebanchi Hiroshima 082-249-3571 (Mon. – Fri., 11:00am – 7:00pm), UDO Music Office 03-3402-3999

★ **coba tour 2017**

NEW!!

10<sup>th</sup> Fri. / 7:00pm (6:00pm) / Hiroshima Club Quattro / ¥6,000 (drinks are extra.) / From Sat., October 15 / ①, Lawson, Ticket PIA, Seven-Eleven, e+ / TSS 082-253-1010  
♫ coba is an accordion player.

★ **Hiroshima Symphony Orchestra: Masterpiece Concert ~ Winter ~**

NEW!!

(*Dvořák: Carnival Overture Op. 92; Mendelssohn: Violin Concerto in E minor Op. 64; Dvořák: Symphony No. 9 in E minor Op. 95 "From the New World"*)

19<sup>th</sup> Sun. / 3:00pm (2:00pm) / Hiroshima Kokusai Kaigijo (International Conference Center Hiroshima), Phoenix Hall / S-¥4,200 Pair tickets (S seats)-¥6,400 A-¥3,200 B-¥2,200 Students-¥1,500 (Students tickets are only sold at the Hiroshima Symphony Orchestra Office.) / From Tue., October 11 / ①⑤⑥⑦, JMS Aster Plaza, Chugoku Shimbun, Hiroshima Symphony Orchestra Office / Hiroshima Symphony Orchestra Office 082-532-3080 E-mail: info@hirokyo.or.jp  
♫ Conductor: Kazuyoshi Akiyama / Violin: Teiko Maehashi

★ **Hironori Ogawa Marimba Concert**

23<sup>rd</sup> Thurs. / ① 2:00pm (1:30pm) ② 7:00pm (6:30pm) / Nishi Kumin Bunka Center / Advance-¥1,500 At the door-¥2,000 (all tickets are for non-reserved seats.) / Now on sale / JMS Aster Plaza, Kumin Bunka Centers / Nishi Kumin Bunka Center 082-234-1960 (9:00am – 9:00pm, closed on Mondays)  
♫ Marimba: Eiko Ikegami, Sara Tatsuyama

Please feel free to contact the International Exchange Lounge at 082-247-9715.

E-mail: golounge@pcf.city.hiroshima.jp

October 2016

★ **Hiroshima Symphony Orchestra:**  
**The 367<sup>th</sup> Subscription Concert**

NEW!!

(Mendelssohn: Overture "Die Schöne Melusine" Op. 32;  
 Liszt: Piano Concerto No. 1 in E-flat major S. 124/R. 455;  
 Schumann: Symphony No. 1 in B-flat major Op. 38  
 "Spring")

26<sup>th</sup> Sun. / 3:00pm (2:00pm) / Hiroshima Bunka  
 Gakuen HBG Hall / S-¥5,200 A-¥4,700 B-  
 ¥4,200 Students-¥1,500 (Student tickets are only  
 sold at the Hiroshima Symphony Orchestra Office.) /  
 From Mon., December 26 / ①⑤⑥⑦, Ticket PIA,  
 Lawson (convenience store), Chugoku Shimbun &  
 Hiroshima Symphony Orchestra Office /  
 Hiroshima Symphony Orchestra Office 082-532-  
 3080 E-mail: info@hirokyo.or.jp

♪ Conductor: Clemens Schuldt / Piano: Kemal Gekic

## March, 2017

NEW!!

★ **Hiroshima Symphony Orchestra Discovery**  
**Series: "Gift"**

(Hidemaro Konoye (arr.): Etenraku; Hiroshi Ohguri:  
 Legend for Orchestra (After the Tele of Ama-no-  
 Iwayado; Messiaen: Sept Haïkai - Esquisses Japonaises  
 pour Piano et Orchestre - ; Mozart: Symphony No. 41 in  
 C major K. 551 "Jupiter")

9<sup>th</sup> Thurs. / 6:45pm (5:45pm) / JMS Aster Plaza / S-  
 ¥5,200 A-¥4,200 B-¥3,200 Students-¥1,000  
 (Student tickets are only sold at the Hiroshima  
 Symphony Orchestra Office.) / From Mon., January  
 9, 2017 (from Tue., January 10, 2017 at the  
 Hiroshima Symphony Orchestra Office) / ①⑤⑥⑦,  
 Ticket PIA, Lawson (convenience store), Chugoku  
 Shimbun, Hiroshima Symphony Orchestra Office,  
 JMS Aster Plaza / Hiroshima Symphony Orchestra  
 Office 082-532-3080 E-mail: info@hirokyo.or.jp

♪ Conductor: Kazuyoshi Akiyama  
 Piano: Hiroshi Nagao

★ **Hiroshima Symphony Orchestra:**  
**The 368<sup>th</sup> Subscription Concert**

NEW!!

(Mozart: Divertimento in D major K. 136; Mozart:  
 Clarinet Concerto in A major K. 622; R. Strauss: Ein  
 Heldenleben Op. 40)

18<sup>th</sup> Sat. / 3:00pm (2:00pm) / Hiroshima Bunka  
 Gakuen HBG Hall / S-¥5,200 A-¥4,700 B-  
 ¥4,200 Students-¥1,500 (Student tickets are only  
 sold at the Hiroshima Symphony Orchestra Office.) /  
 From Wed., January 18, 2017 / ①⑤⑥⑦, Ticket  
 PIA, Lawson (convenience store), Chugoku  
 Shimbun & Hiroshima Symphony Orchestra Office  
 / Hiroshima Symphony Orchestra Office 082-532-  
 3080 E-mail: info@hirokyo.or.jp

♪ Conductor: Kazuyoshi Akiyama  
 Clarinet: Daniel Ottensamer



Please feel free to contact the International Exchange Lounge at 082-247-9715.

E-mail: golounge@pcf.city.hiroshima.jp

October 2016



# Event Halls

◆ **Hiroshima Bunka Gakuen HBG Hall 広島文化学園 HBG ホール**

(3-3 Kako-machi, Naka-ku, Hiroshima Tel. 082-243-8881)

- ▶ Take the No.24 bus bound for Yoshijima Eigyocho (吉島営業所) and get off at Kako-machi (加古町). Walking time to destination: 2 minutes

◆ **Hiroshima Kenmin Bunka Center 広島県民文化センター**

(1-5-3 Ote-machi, Naka-ku, Hiroshima Tel. 082-245-2311)

- ▶ Take a streetcar or a bus and get off at Hondori (本通) or Kamiya-cho (紙屋町). Walking time to destination: 5 minutes

◆ **JMS Aster Plaza JMS アステールプラザ**

(4-17 Kako-machi, Naka-ku, Hiroshima Tel. 082-244-8000)

- ▶ Take the No.24 bus bound for Yoshijima Eigyocho (吉島営業所) and get off at Kako-machi (加古町). Walking time to destination: 2 minutes

◆ **Ueno Gakuen Hall 上野学園ホール**

(19-1 Hakushima-kita-machi, Naka-ku, Hiroshima Tel. 082-223-6367)

- ▶ Take the Astramline bound for Koiki Koen-mae (広域公園前) or Chorakuji (長楽寺) Station and get off at Hakushima (白島) Station. Walking time to destination: 3 minutes

◆ **Hiroshima Kokusai Kaigi-jo (International Conference Center Hiroshima), Phoenix Hall 広島国際会議場フェニックスホール**

(1-5 Nakajima-cho, Naka-ku, Hiroshima Tel. 082-242-7777)

- ▶ Get on a Hiroshima Bus bound for Yoshijima and get off at Heiwa Kinenkoen (平和記念公園).
- ▶ Get off at the Chuden-mae (中電前) or Genbaku Dome-mae (原爆ドーム前) Streetcar Stops. Walking time to destination: 5 minutes

◆ **Hiroshima Club Quattro 広島クラブクアトロ**

(10-1 Hondori, Naka-ku, Hiroshima (Hiroshima PARCO Hon-kan 10F) Tel. 082-542-2280)

- ▶ Take a streetcar and get off at Hatchobori (八丁堀). Walking time to destination: 5 minutes

◆ **Hiroshima Green Arena 広島グリーンアリーナ**

(4-1 Moto-machi, Naka-ku, Hiroshima Tel. 082-228-1111)

- ▶ Take a streetcar and get off at Kamiya-cho-nishi (紙屋町西) or Kamiya-cho-higashi (紙屋町東). Walking time to destination: 5 minutes

◆ **Hiroshima Sun Plaza 広島サンプラザ**

(3-1-1 Shoko Center, Nishi-ku, Hiroshima Tel. 082-278-5000)

- ▶ Take a train or streetcar to Miyajima and get off at JR Shin-inokuchi (新井口) Station (JR Sanyo Line) or Shoko Center-iriguchi (商エセンター入り口) Streetcar Stops (Hiroden Miyajima Line). Walking time to destination: 5 minutes

◆ **Elisabeth University of Music エリザベト音楽大学**

(4-15 Nobori-machi, Naka-ku, Hiroshima Tel. 082-221-0918)

- ▶ Take a streetcar and get off at Kanayama-cho (銀山町) or Jogakuin-mae (女学院前). Walking time to destination: 10 minutes

◆ **Higashi Kumin Bunka Center 東区民文化センター**

(10-31 Higashi-kaniya-cho, Higashi-ku, Hiroshima Tel. 082-264-5551)

- ▶ From the Shinkansen Exit of the JR Hiroshima (広島) Station, walking time to destination is 10 minutes.

Please feel free to contact the International Exchange Lounge at 082-247-9715.

E-mail: [golounge@pcf.city.hiroshima.jp](mailto:golounge@pcf.city.hiroshima.jp)

October 2016



◆ **Nishi Kumin Bunka Center** 西区民文化センター

(6-1 Yokogawa Shin-machi, Nishi-ku, Hiroshima Tel. 082-234-1960)

➤ From JR Yokogawa (横川) Station, walking time to destination is 5 minutes.

◆ **Saeki Kumin Bunka Center** 佐伯区民文化センター

(6-1-10 Itsukaichi-chuo, Saeki-ku, Hiroshima Tel. 082-921-7550)

➤ From Hiroshima Bus Center (Sogo Hiroshima, 3F), take a bus to Yakushigaoka-danchi (薬師が丘団地), Shikigaoka-danchi (四季が丘団地), Higashi-kannondai-danchi (東観音台団地) or Ajinadai-kita (阿品台北) and get off at Saeki-kumin Bunka Center-mae (佐伯区民文化センター前). Walking time to destination: 1 minutes

◆ **Aki Kumin Bunka Center** 安芸区民文化センター

(2-16 Funakoshi-minami 3-chome, Aki-ku, Hiroshima Tel. 082-824-1330)

➤ From JR Kaitaichi (海田市) Station (JR Sanyo Line), walking time to destination is 5 minutes.

◆ **Blue Live Hiroshima** ブルーライブ広島

(3-12-69 Ujina Kaigan, Minami-ku, Hiroshima Tel. 082-250-5522)

➤ Take a streetcar for Hiroshima-ko (No. 1, 3 or 5) and get off at Kaigan-dori (海岸通). Walking time to destination: 5 minutes

◆ **Gewand Halle** ゲバントホール

(Wako Palace21 5F, 2-1-13 Honkawa-cho, Naka-ku, Hiroshima Tel. 082-503-1711)

➤ Take a streetcar and get off at Honkawa-cho (本川町). Walking time to destination: 4 minutes

◆ **lifeone221 hall** lifeone221 ホール

(2-2-1 Itsukaichi-chuo, Saeki-ku, Hiroshima-shi Tel.082-922-0028)

➤ Take a bus from JR Itsukaichi (五日市) Station (north exit) and get off at Itsukaichi-chuo 2-chome (五日市中央二丁目). Walking time to destination: 5 minutes.

◆ **Memorial Cathedral for World Peace** 世界平和記念聖堂

(4-42 Nobori-cho, Naka-ku, Hiroshima-shi Tel.082-221-0621)

➤ From Kanayama-cho (銀山町) or Jogakuin-mae (女学院前) Streetcar Stop, walking time to destination is 10 minutes.

◆ **Hiroshima Nagarekawa Church** 広島流川協会

(8-30 Kami-nobori-cho, Naka-ku, Hiroshima Tel. 082-221-1813)

➤ From Jogakuin-mae (女学院前) or Shukkeien-mae (縮景園前) Streetcar Stop, walking time to destination is 5 minutes.

◆ **Japan Evangelical Lutheran Church of Hiroshima** ルーテル広島教会

(2-12 Tsurumi-cho, Naka-ku, Hiroshima Tel. 082-241-3695)

➤ From Hijiyama-shita (比治山下) Streetcar Stop, walking time to destination is 3 minutes.

◆ **YMCA Kokusai Bunka Hall** YMCA 国際文化ホール

(7-11 Hatchobori, Naka-ku Tel. 082-227-6816)

➤ From Tate-machi (立町) Streetcar Stop, walking time to destination is 3 minutes.

◆ **Hatsukaichi Bunka Hall Sakurapia** はつかいち文化ホールさくらぴあ

(1-11-1 Shimo-hera, Hatsukaichi City Tel. 0829-20-0111)

➤ Take a train on the JR Sanyo Line bound for Iwakuni and get off at JR Miyauchi Kushido (宮内串戸) Station. Walking time to destination: 15 minutes

➤ Take a streetcar on the Hiroden Miyajima Line and get off at Hatsukaichi Shiyakusho-mae (廿日市市役所前). Walking time to destination: 8 minutes

◆ **Kure City Bunka Hall** 呉市文化ホール

(3-10-1 Chuo, Kure City Tel. 0823-25-7878)

➤ From JR Kure (呉) Station (JR Kure Line), walking time to destination is 7 minutes.

Please feel free to contact the International Exchange Lounge at 082-247-9715.

E-mail: [golounge@pcf.city.hiroshima.jp](mailto:golounge@pcf.city.hiroshima.jp)

October 2016





★ A: Adults    ★ U: University Students    H: High School Students  
 ★ J: Junior High School Students    E: Elementary School Students  
 ★ S: Seniors (65 years old and up - Identification showing your date of birth is required.)

◆ Generally, admission is allowed up to 30 min. prior to closing. ◆

### Hiroshima Museum of Art

Address: 3-2 Moto-machi, Naka-ku, Hiroshima City  
 Tel: 082-223-2530  
 Hours: 9:00am – 5:00pm  
 Closed: Mondays (except during special exhibitions)  
 URL: <http://www.hiroshima-museum.jp>

#### Special Exhibition

##### ■ Masterpieces from the Art Collection of Yasunari Kawabata

Period: Sat., Sept. 3 – Sun., Oct. 16

Admission Fee:

A -¥1,300 (¥1,100), S-¥1,100,  
U&H-¥1,000 (¥800), J&E-¥600 (¥400)

◇ Advance ticket prices shown in ( ).

##### ■ Mitsumasa Anno's Picture Book Telling Stories

Period: Sat., Oct. 22 – Sun., Dec. 11

Admission Fee:

A -¥1,200 (¥1,000), S-¥1,000,  
U&H-¥900 (¥700), J&E-¥500 (¥300)

◇ Advance ticket prices shown in ( ).

#### Collection Exhibition

##### ■ Modern European Paintings

Period: Year-round

### Hiroshima City Museum of Contemporary Art

Address: 1-1 Hijiyama Koen, Minami-ku, Hiroshima City  
 Tel: 082-264-1121  
 Hours: 10:00am – 5:00pm  
 Closed: Mondays (except national holiday)  
 URL: <http://www.hcmca.cf.city.hiroshima.jp/>

★ Free admission on November 3 ★

#### Special Exhibition

##### ■ 1945±5

Period: Sat., Jul. 30 – Mon., Oct. 10

Admission Fee:

A-¥1,030 (¥820), U-¥720 (¥620),  
S&H-¥510 (¥410), J & under-Free

◇ Advance ticket prices shown in ( ).

##### ■ The World is Strange! The Manga and Paintings of Tiger Tateishi and Yuichi Yokoyama

Period: Fri., Oct. 28, 2016 – Sun., Jan. 22, 2017

Admission Fee:

A-¥1,030 (¥820), U-¥720 (¥620),  
S&H-¥510 (¥410), J & under-Free

◇ Advance ticket prices shown in ( ).

#### Collection Exhibition

Admission Fee: A-¥360 / U-¥270 / S&H-¥170  
/ J & under- Free

Holders of special exhibition admission tickets are also entitled to view the collection exhibition.

##### ■ 2016 – III

##### Collection Highlights & the Special Display

Period: Sat., Oct. 8, 2016 – Sun., Jan. 22, 2017

#### Open Program (Free admission)

##### ■ Open Call for Art Project Ideas 2016

Period: Sat., Nov. 5 – Sun., Nov. 27

#### Video Art Program (Free admission)

##### ■ A Window to the World [The 53<sup>rd</sup> Program]: Rebecca Morrison

Period: Sun., Sept. 18 – Thurs., Nov. 3

#### Hiroshima MOCA Monthly Workshop

✍ This is an art program in which the museum selects one particular material and visitors are free to make anything with it.

Reservations are not required. You can join the workshop on the event day of.

Date: Not finalized

Time: ① 10:00am – noon

② 2:00pm – 5:00pm

Participation Fee: Free



Please feel free to contact the International Exchange Lounge at 082-247-9715.

E-mail: [golounge@pcf.city.hiroshima.jp](mailto:golounge@pcf.city.hiroshima.jp)

October 2016

**Hiroshima Prefectural Art Museum**

Address: 2-22 Kaminobori-cho, Naka-ku,  
Hiroshima City

Tel: 082-221-6246

Hours: 9:00am – 5:00pm

✧ Open until 8:00pm on Fridays (Apr. – Oct.)

✧ Open until 7:00pm on Fridays (Nov. – Mar.)

Closed: Mon., Oct. 3, 17, 24 & 31

URL: <http://www.hpam.jp/>

**Special Exhibitions**■ **Kaï Higashiyama: Nature, Men and Towns**

Period: Sat., Sept. 17 – Sun., Oct. 30

Admission Fee:

A-¥1,300 (¥1,100), U&H-¥900 (¥700),

J&E-¥600 (¥400)

✧ Advance ticket prices shown in ( )

■ **M. C. Escher, the Master of Trompe-l'oeil: Mysterious World of Prints**

Period: Fri., Nov. 11 – Sun., Dec. 25

Admission Fee:

A-¥1,200 (¥1,000), U&H-¥800 (¥600),

J&E-¥400 (¥200)

✧ Advance ticket prices shown in ( )

**Collection Exhibition**

Admission Fee (all exhibitions):

A-¥510, U-¥310, H, & under-Free

Holders of special exhibition admission tickets are also entitled to view the Museum's Collection exhibits.

■ **Hiroshima Prefectural Art Museum Best Selection Exhibit: The Cream of the Collection**

Period: Wed., Aug. 31 – Sun., Dec. 18

**Kure Municipal Museum of Art**

Address: Irifuneyama Koen, Saiwai-cho, Kure City

Tel: 0823-25-2007

Hours: 10:00am – 5:00pm

Closed: Tuesdays (except national holidays)

URL: <http://kure-bi.jp/>

**Special Exhibition**■ **Fumiyo Kôno: "Kono Sekai no Katasumi ni" (in a corner of this world)**

Period: Sat., Jul. 23 – Thu., Nov. 3

Admission Fee: A-¥1,000 (¥800), U-¥600 (¥500), H & under-Free

✧ Advance ticket prices shown in ( )

**Fukuyama Museum of Art**

Address: 2-4-3 Nishi-machi, Fukuyama City

Tel: 084-932-2345

Hours: 9:30am – 5:00pm ✧ Open until 7:00pm on Oct. 28, 29, Nov. 4 & 5

Closed: Mondays (except Oct. 10)

HP: <http://www.city.fukuyama.hiroshima.jp/site/fukuyama-museum/>

**Special Exhibition**■ **The Genius of Michelangelo**

Period: Sun., Sept. 18 – Sun., Nov. 6

Admission Fee: A&U-¥1,200,

H & under-Free

**Collection Exhibition**

Admission Fee (all exhibitions):

A&U-¥300, H & under-Free

■ **Autumn Exhibition**

**The World of Masaaki Noda:  
From New York to the World**

Period: Wed., Sept. 7 – Sun., Dec. 18

**Onomichi City Museum of Art**

Address: 17-19 Nishitsuchido-cho, Onomichi City  
(Inside Senkoji Park)

Tel: 0848-23-2281

Hours: 9:00am – 5:00pm

Closed: Mondays except national holidays

**Collection Exhibition**

Period: Sat., Oct. 8 – Sun., Nov. 6

**Okuda Genso Sayume Art Museum**

Address: 453-6 Higashi Sakeya-machi, Miyoshi City

Tel: 0824-65-0010

Hours: 9:30am – 5:00pm

Open until 9:00pm on Oct. 16

Closed: Oct. 12

URL: <http://www.genso-sayume.jp>

**Special Exhibition**■ **Uemura Shoen: A Retrospective**

Period: Thurs., Sept. 15 – Thurs., Nov. 3

The 1<sup>st</sup> term: Sept. 15 – Oct. 11

The 2<sup>nd</sup> term: Oct. 13 – Nov. 3

Admission Fee:

A-¥1,000 (900), Pair tickets- ¥1,800

U&H-¥500 (¥400), J & under-Free

✧ Advance ticket prices shown in ( ).



Please feel free to contact the International Exchange Lounge at 082-247-9715.

E-mail: [golounge@pcf.city.hiroshima.jp](mailto:golounge@pcf.city.hiroshima.jp)

October 2016

# Hiroshima Toyo Carp

## Game Schedule 2016

The Toyo Carp (Hiroshima's professional baseball team) plays about 60 games at MAZDA Zoom-Zoom Stadium in Hiroshima every year.

### GAME SCHEDULE

#### OCTOMBER

Wed., 12<sup>th</sup>, 6:00pm / Climax Series  
 Thurs., 13<sup>th</sup>, 6:00pm / Climax Series  
 Fri., 14<sup>th</sup>, 6:00pm / Climax Series  
 Sat., 15<sup>th</sup>, 1:30pm / Climax Series  
 Sun., 16<sup>th</sup>, 1:30pm / Climax Series  
 Mon., 17<sup>th</sup>, 6:00pm / Climax Series  
 Tue., 18<sup>th</sup>, 6:00pm / Climax Series (Rain date)  
 Wed., 19<sup>th</sup>, 6:00pm / Climax Series (Rain date)

### TICKET INFORMATION

#### Ticket Offices

##### ◆ MAZDA Zoom-Zoom Stadium Hiroshima

Tickets can be purchased at the ticket booths at the entrances of the stadium (closed on August 6).

#### Booth Opening Times

11:30am (days with night games) / 11:00am (days with day games)  
 11:00am – 4:00pm (days when there are no games)

##### ◆ CARPIO (6-7 Hacho-bori, Naka-ku)

OPEN: 10:00am – 4:00pm  
 TEL: 227-2222

##### ◆ Convenience Stores

Tickets are available at convenience stores such as Lawson, Seven-Eleven, FamilyMart and Sunkus.

### ACCESS

#### MAZDA Zoom-Zoom Stadium Hiroshima:

From JR Hiroshima Station, walking time to the stadium is 10 minutes.

### INQUIRIES

#### Hiroshima Toyo CARP

Tel. (082) 223-2141 Fax. (082) 502-1189 URL: <http://www.carp.co.jp/>



Please feel free to contact the International Exchange Lounge at 082-247-9715.

E-mail: [golounge@pcf.city.hiroshima.jp](mailto:golounge@pcf.city.hiroshima.jp)

October 2016

# Sanfrecce Hiroshima FC

## Game Schedule 2016

### GAME SCHEDULE Date / Kick Off / Game / Venue / Ticket Sales

#### 2016 J League 2<sup>nd</sup> Stage

Sat., October 1 / 7:00pm / vs. F.C. Tokyo / EDION Stadium Hiroshima / Now on sale

Sat., October 29 / 7:00pm / vs. Avispa Fukuoka / EDION Stadium Hiroshima / Now on sale

### TICKETS Seats / Advanced Tickets / At the Door

- ◆ Reserved Seats SS / ¥5,300 / ¥5,900
- ◆ Reserved Seats SA / ¥3,700 / ¥4,300
- ◆ Unreserved Seats Adults / ¥2,600 / ¥3,200
- ◆ Unreserved Seats Students (High School Students and under) / ¥1,000 / ¥1,500

### ACCESS

#### ◆ EDION Stadium Hiroshima (Hiroshima Big Arch)

Take the Astram-line bound for *Koiki-koen-mae* (広域公園前) and get off at the last station, *Koiki-koen -mae* (広域公園前).

From *Hondori* Station: One way fare - ¥480 Travel time - 35 min.

### TICKET OFFICES

- ◆ Sanfrecce Hiroshima Official Shop V-POINT (EDION *Honkan*, 8F / Tel. 248-3317 / 10:00am – 8:00pm / Closed on Mondays except national holidays)
- ◆ EDION Play Guide (*Honkan*, 8F) ◆ Fukuya (Hiroshima Station) (7F) ◆ Alpark Tenmaya (3F)
- ◆ Convenience Stores (FamilyMart, Seven Eleven, CircleKSunkus and Lawson)

### INQUIRIES

- ◆ Sanfrecce HIROSHIMA Tel. 233-3233 URL: <http://www.sanfrecce.co.jp>



Please feel free to contact the International Exchange Lounge at 082-247-9715.

E-mail: [golounge@pcf.city.hiroshima.jp](mailto:golounge@pcf.city.hiroshima.jp)

October 2016

# Hiroshima Dragonflies

## 2016 – 2017 B2 League

🏀 Hiroshima Dragonflies is a professional basketball team in Hiroshima.

### GAME SCHEDULE Date / Starting Time / Game / Venue

✧ Only the games scheduled to be held in Hiroshima are listed below. For away games, please check the Hiroshima Dragonflies' official website.

#### ★ OCTOBER

Sat., October 1 / 2:00pm / vs. Kumamoto Volters / Hiroshima Sun Plaza  
 Sat., October 29 / 2:00pm / vs. Ehime Orange Vikings / Higashi Hiroshima Undo Koen Taiikukan  
 Sun., October 30 / 1:00pm / vs. Ehime Orange Vikings / Higashi Hiroshima Undo Koen Taiikukan

#### ★ NOVEMBER

Thurs., November 3 / 2:00pm / vs. Kagawa Five Arrows / Hiroshima Sun Plaza  
 Fri., November 4 / 7:00pm / vs. Kagawa Five Arrows / Hiroshima Sun Plaza  
 Sat., November 26 / 2:00pm / vs. Kagoshima Rebnise / Rose Arena  
 Sun., November 27 / 1:30pm / vs. Kagoshima Rebnise / Rose Arena

#### ★ DECEMBER

Sat., December 10 / 2:00pm / vs. Bambitious Nara / Hiroshima Sun Plaza  
 Sun., December 11 / 1:30pm / vs. Bambitious Nara / Hiroshima Sun Plaza  
 Fri., December 30 / 2:00pm / vs. Tokyo Excellence / Hiroshima Sun Plaza  
 Sat., December 31 / 1:30pm / vs. Tokyo Excellence / Hiroshima Sun Plaza

#### ★ JANUARY

Sat., January 28 / Not finalized / vs. F Eagles Nagoya / Kure City Sogo Taiikukan  
 Sun., January 29 / Not finalized / vs. F Eagles Nagoya / Kure City Sogo Taiikukan

#### ★ FEBRUARY

Sat., February 11 / Not finalized / vs. Nishinomiya Storks / Hiroshima Sun Plaza  
 Sun., February 12 / Not finalized / vs. Nishinomiya Storks / Hiroshima Sun Plaza  
 Sat., February 25 / Not finalized / vs. Earthfriends Tokyo Z / Hiroshima Sun Plaza  
 Sun., February 26 / Not finalized / vs. Earthfriends Tokyo Z / Hiroshima Sun Plaza

#### ★ MARCH

Sat., March 11 / Not finalized / vs. Iwate Big Bulls / Hiroshima Sun Plaza  
 Sun., March 12 / Not finalized / vs. Iwate Big Bulls / Hiroshima Sun Plaza  
 Fri., March 17 / Not finalized / vs. Kumamoto Volters / Hiroshima Sun Plaza  
 Sun., March 18 / Not finalized / vs. Kumamoto Volters / Hiroshima Sun Plaza

#### ★ APRIL

Sat., April 8 / Not finalized / vs. Kagoshima Rebnise / Hiroshima Sun Plaza  
 Sun., April 9 / Not finalized / vs. Kagoshima Rebnise / Hiroshima Sun Plaza  
 Sat., April 22 / Not finalized / vs. Kagawa Five Arrows / Hiroshima Sun Plaza  
 Sun., April 23 / Not finalized / vs. Kagawa Five Arrows / Hiroshima Sun Plaza

#### ★ MAY

Sat., May 6 / Not finalized / vs. Ehime Orange Vikings / Hiroshima Sun Plaza  
 Sun., May 7 / Not finalized / vs. Ehime Orange Vikings / Hiroshima Sun Plaza

Please feel free to contact the International Exchange Lounge at 082-247-9715.

E-mail: [golounge@pcf.city.hiroshima.jp](mailto:golounge@pcf.city.hiroshima.jp)

October 2016



**TICKETS (At the Door)**

- ◆ Reserved seats: ¥3,700 - ¥16,700
- ◆ Unreserved seats (1<sup>st</sup> floor seats): Adults-¥3,200    High school students-¥2,600  
Junior high & Elementary school students-¥2,100
- ◆ Unreserved seats (2<sup>nd</sup> floor seats): Adults-¥2,600    High school students-¥2,100  
Junior high & Elementary school students-¥1,500

**ACCESS**

- ◆ **Hiroshima Sun Plaza** (1-1 Shoko Center 3-chome, Nishi-ku, Hiroshima City)  
From JR Shin Inokuchi (新井口) Station or Shoko Center Iriguchi (商工センター入口) Streetcar Stop, walking time to destination is 5 minutes.
- ◆ **Higashi Hiroshima City Undo Koen Taiikukan** (67-1 Taguchi, Saijo-cho, Higashi Hiroshima City)  
Take a bus from JR Saijo (西条) or JR Higashi Hiroshima (東広島) Station (JR Sanyo Line).
- ◆ **Rose Arena** (2-2 Midori-machi, Fukuyama City)  
Take a bus from JR Fukuyama (福山) Station (JR Sanyo Line).
- ◆ **Kure City Sogo Taiikukan** (7-1 Hiro Ohshingai 1-chome, Kure City)  
From JR Hiro (広島) Station (JR Kure Line), walking time to destination is 5 minutes.

**TICKET OFFICES**

- ◆ Hiroshima Dragonflies Club Shop (Hiroshima Marina Hop / Tel. 082-297-6825 / 10:00am – 8:00pm)  
(The club shop sells advanced tickets only.)
- ◆ Ticket PIA
- ◆ Convenience Stores (FamilyMart, Seven Eleven, CircleKSunkus and Lawson)
- ◆ Hiroshima Power House (Basketball pro Shop)
- ◆ Taiikusha (Sporting-goods store)

**INQUIRIES**

- ◆ Hiroshima Dragonflies    Tel. 082-297-6825 (Mon. – Fri., 10:00am – 5:30pm)  
HP: <http://hiroshimadragonflies.com>
- ◆ NBL (National Basketball League of Japan) Official HP: <http://www.nbl.or.jp>



Please feel free to contact the International Exchange Lounge at 082-247-9715.

E-mail: [golounge@pcf.city.hiroshima.jp](mailto:golounge@pcf.city.hiroshima.jp)

October 2016

# Seasonal Event Information

## October 2016

★ Event schedules are subject to change.  
Please contact event organizers before you go.



### Events Held in Hiroshima City

**Every Wednesday until December 28, 2016** ★ October 5, 12, 19 & 26; November 2, 9, 16, 23\* & 30

\*Special performance will be held on Nov. 23 (see below).

**Hiroshima Kagura** ひろしまけんみんぶんか 広島県民文化センター「広島神楽」定期公演

**TIME:** 7:00pm – 8:45pm (The venue will open at 6:00pm.)

**VENUE:** Hiroshima Kenmin Bunka Center, Ote-machi, Naka-ku (located near Hondori Shopping Street)

**ACCESS:** From Kamiya-cho-nishi or Hondori Streetcar Stops, walking time to destination is 3 minutes.

**TICKETS:** ¥1,000 ◇ All non-reserved seats

◇ Tickets will be sold from 5:00pm on the performance date at the center.

There are no advance tickets.

**INQUIRIES:** Hiroshima Kenmin Bunka Center 082-245-2311

#### ❖ “Hiroshima Kagura” Special Performance ❖

**DATE & TIME:** Wed., November 23 1:00pm – 5:00pm (The venue will open at noon.)

**VENUE:** Hiroshima Kenmin Bunka Center

**TICKETS:** ¥2,000 (all reserved seats)

◇ Advance tickets will be sold from 9:00am on Mon., October 24 at the center.

Day-of-performance tickets will be sold from 11:00am on November 23 at the center.

**Sun., October 2 & 16**

**Hiroshima Minato Marché** ひろしまみなとマルシェ

**TIME:** 9:00am – 3:00pm

**PLACE:** Open Space between East and West Terminal of Hiroshima Port, Minami-ku

**ACCESS:** Take the No. 1, 3 or 5 streetcar bound for Hiroshima Port and get off at the last stop, Hiroshima Port.

**INQUIRIES:** Hiroshima Minato Marché Office 082-255-6646

☐ You can buy and taste locally-grown fresh vegetables and other food products at the marché.

**Sun., October 16**

**Japanese Music Concert at Shukkeien Garden** ほうがくかんしょうかい 邦楽鑑賞会

**TIME:** Concert at Seifu-kan ⇨ ① 10:00am ② 2:00pm

Concert at Meigetsu-tei ⇨ 12:30pm

**PLACE:** Shukkeien Garden, Seifu-kan and Meigetsu-tei

**ACCESS:** Take a streetcar on the Hiroden Hakushima Line and get off at Shukkeien-mae. It is a 5 min. walk from the stop.

**FEE:** ¥2,000 for the concert at Seifu-kan ◇ No charge for the concert at Meigetsu-tei.

◇ Admission to the garden is also required.

Admission fee { Adults - ¥260, University & High school students - ¥150  
Junior high & Elementary school students - ¥100 }

**INQUIRES:** Shukkeien Garden 082-221-3620



Please feel free to contact the International Exchange Lounge at 082-247-9715.

E-mail: [golounge@pcf.city.hiroshima.jp](mailto:golounge@pcf.city.hiroshima.jp)

October 2016

**Sun., October 16****Hiroshima Prefecture Kagura Performance**ひろしまけん か ぐらきょうえんたいかい  
広島県神楽 競 演大会**TIME:** From 9:10am onward (the venue will open at 8:45am)**PLACE:** Hiroshima Sun Plaza Hall, Shoko Center, Nishi-ku**ACCESS:** ① From JR Shin-inokuchi Station (JR Sanyo Line), walking time to destination is 5 minutes.  
② From Shoko Center Iriguchi Streetcar Stop (Hiroden Miyajima Line), walking time to destination is 5 minutes.**TICKETS:** Advance-¥3,000 At the door-¥3,500 (all seats are non-reserved.)

✧ Advance tickets are sold at EDION Hiroshima Play Guide, Hiroshima Yume Plaza, Fukuya Department Store (Hatchobori Store &amp; Hiroshima Station Store) &amp; Alpark Tenmaya Ticket Salon.

✧ Free admission for elementary school students and under.

**INQUIRES:** Executive Committee 082-245-3211 info@hiroshimakagura.jp**Sun., October 23****The Day of Sister and Friendship Cities Event: Chongqing Day (China)**しまい ゆうこうと し ひ きねん じゅうけい ひ  
姉妹・友好都市の日記念イベント 重慶の日**TIME:** 9:30am – 3:30pm**PLACE:** JMS Aster Plaza, Kako-machi, Naka-ku**ACCESS:** Take the No. 24 bus and get off at Kako-machi. Walking time to destination: 2 minutes**INQUIRIES:** Hiroshima Heiwa Bunka Center, Kokusai Koryu Kyoryoku Ka (Hiroshima Peace Culture Foundation, International Relations and Cooperation Division) 082-242-8879

▣ Traditional Chinese music performance, Chinese confectionaries, etc.

**Sat., October 29****2016 Autumn Sumo Tour in Hiroshima**おおずもうひろしまばしょ  
大相撲広島場所**TIME:** 8:00am – 3:00pm**PLACE:** Hiroshima Sun Plaza Hall, Nishi-ku**ACCESS:** From JR Shin Inokuchi Station (JR Sanyo Line) or Shoko Center Iriguchi Streetcar Stop (Hiroden Miyajima Line), walking time to destination is 5 minutes.**TICKETS:**1st Floor**Sold Out**

- "Tamari" Seats (ringside)  
S\* - ¥14,000/person A\* - ¥13,000/person

- Floor Seats  
S\* - ¥48,000 for 4 seats A - ¥40,000 for 4 seats

**Sold Out**

- Chair Seats  
A - ¥12,000/person B - ¥11,000/person C - ¥10,000/person D - ¥9,000/person

- Seats for Persons with Disabilities: ¥4,500/person

&lt;Seats with "\*" &gt; You can take a special sumo cushion home as a souvenir. (Cushions are also available for ¥1,000 (advance sale) and ¥1,500 (at the door)).

2nd Floor (chair seats)

- Reserved Seats: E - ¥8,000/person F - ¥7,000/person ■ Non-reserved Seats: ¥5,000/person

**RESERVATION & INQUIRIES:** 082-532-1701 (Mon. – Fri., 10:00am – 6:00pm)✧ You can order a *bento* (lunch box; ¥2,000) with tea as well.✧ You may not be allowed to bring any food or drink to the venue other than this *bento*.<Notice> *Bento* reservations will be accepted between Oct. 19 and 27 at Musashi (a *bento* shop; Tel. 082-291-6340)

Please feel free to contact the International Exchange Lounge at 082-247-9715.

E-mail: golounge@pcf.city.hiroshima.jp

October 2016



**Sat., October 29 & Sun., October 30**

## **Hiroshima Food Festival 2016** ひろしまフードフェスティバル 2016

**TIME:** 10:00am – 5:00pm ☆ On the 29<sup>th</sup>, the festival at Hiroshima Castle will continue until 8:00pm.

**PLACE:** Around Hiroshima Castle and the *Chuo Koen* (Park), Naka-ku

**ACCESS:** ① From Kamiya-cho-higashi or Kamiya-cho-nishi Streetcar Stop, walking time to destination is 15 minutes.

② From JR Shin-hakushima Station (JR Sanyo Line), walking time to destination is 10 minutes.

**ADMISSION FEE:** Free ☆ Food and drink will incur extra charges.

**INQUIRIES:** Executive Committee Office (inside RCC TV; Mon. – Fri., 9:30am – 5:30pm)  
082-222-1133

▣ This is the biggest food festival in Hiroshima. You can enjoy not only food but also *kagura* performances at the venue.

**Sun., October 30**

## **PE-A-CE-LO-VE 2016** ぺあせろべ 2016

**TIME:** 10:00am ~ 4:00pm

**PLACE:** *Chuo Koen* (Park), Naka-ku

**ACCESS:** ① From Kamiya-cho-higashi or Kamiya-cho-nishi Streetcar Stop, walking time to destination is 15 minutes.

② From JR Shin-hakushima Station (JR Sanyo Line), walking time to destination is 10 minutes.

**ADMISSION FEE:** Free ☆ Food and drink will incur extra charges.

**INQUIRIES:** PE-A-CE-LO-VE Executive Committee 082-244-6836

▣ An international festival that allows Hiroshima's citizens of various nationalities and cultures to interact and develop friendships. You can enjoy a variety of stage performances and food from all over the world.

**Sat., October 29 - Sun., November 13**

## **Kikka-ten (Chrysanthemum Exhibition) at Hiroshima Castle** ひろしまじょうだいきつかつてん 広島城大菊花展

**TIME:** 10:00am – 4:30pm ♦ Oct. 29 ⇨ 10:30am – 4:30pm ♦ Nov. 13 ⇨ 10:00am – 4:00pm

**PLACE:** Hiroshima Castle, *Ni-no-maru* & *San-no-maru*, Naka-ku

**ACCESS:** ① From Kamiya-cho-higashi or Kamiya-cho-nishi Streetcar Stop, walking time to destination is 15 minutes.

② From JR Shin-hakushima Station (JR Sanyo Line), walking time to destination is 17 minutes.

**ADMISSION FEE:** Free

**INQUIRIES:** *Hiroshima Matsuri linkai* 082-247-6805 E-mail: kankou-2@hiroshima-navi.or.jp

▣ 2,000 potted chrysanthemums will be displayed. *Koto* (traditional Japanese harp) and *gagaku* (ancient court music) concerts will also be held during this period.

**Tue., November 1 – Sun., November 13**

## **Kikka-ten (Chrysanthemum Exhibition) at Shukkeien Garden** きつかつてん 菊花展

**TIME:** 9:00am – 5:00pm (entry allowed up to 4:30pm)

**PLACE:** Shukkeien Garden

**ACCESS:** Take a streetcar on the Hiroden Hakushima Line and get off at Shukkeien-mae. Walking time to destination: 5 minutes

**ADMISSION FEE:** Adults-¥260, University & High school students-¥150

Junior high & Elementary school students-¥100

❖ Admission is free for senior high, junior high and elementary school students between Nov. 1 and Nov. 7 (*kyoiku* (education) week).

**INQUIRIES:** Shukkeien Garden 082-221-3620

Please feel free to contact the International Exchange Lounge at 082-247-9715.

E-mail: golounge@pcf.city.hiroshima.jp

October 2016

**Thurs., November 3****Kiku-mi (Chrysanthemum-viewing) Tea Ceremony**きく み ちやかい  
菊見茶会**TIME:** 9:30am – 3:00pm**PLACE:** Shukkeien Garden**ACCESS:** Take a streetcar on the Hiroden Hakushima Line and get off at Shukkeien-mae. Walking time to destination: 5 minutes**FEE:** Main seating, with thin tea - ¥800 / Open-air seating, with Shimane “bote bote” tea - ¥600

❖ Admission to the garden is free on November 3 as it is Culture Day.

**INQUIRIES:** Shukkeien Garden 082-221-3620**Sun., November 20****2016 International Festival**こくさいこうりゅう きょうりよく ひ  
国際交流・協力の日 2016**TIME:** 10:00am – 4:00pm**PLACE:** Hiroshima Kokusai Kaigijo (International Conference Center Hiroshima), Peace Memorial Park & Peace Boulevard**ACCESS:** Get on a bus bound for Yoshijima and get off at Heiwa-kinen-koen (Peace Memorial Park).**INQUIRIES:** Hiroshima Heiwa Bunka Center, Kokusai Koryu Kyoryoku Ka (Hiroshima Peace Culture Foundation, International Relations and Cooperation Division) 082-242-8879

▣ Lectures, culture and information exchange meetings, workshops, ethnic food stalls, and more!

❖ Some activities at the festival require reservations.

**Sun., November 27****The 26<sup>th</sup> Kagura Festival**だい かい かぐらまつり  
第26回神楽祭**TIME:** From 10:00am onward (venue will open at 9:30am.)**PLACE:** Saeki Kumin Bunka Center, Saeki-ku**ACCESS:** Take a bus from Hiroshima Bus Center (platform No. 2; Sogo Hiroshima Department Store, 3F) and get off at Saeki Kumin Bunka Center-mae.**TICKETS:** ♦ High school students and up: Advance-¥1,000 At the door-¥¥1,200

♦ Junior high &amp; Elementary school students: Advance-¥500 At the door-¥600

♦ Preschoolers-Free

❖ Advance tickets are sold at Saeki Kumin Bunka Center.

**INQUIRIES:** Saeki Kumin Bunka Center 082-921-7550**Sun., March 19****“Sweets” Marathon in Hiroshima**ぜんこく ひろしま  
全国スイーツマラソン in 広島**TIME:** 8:00am – 5:00pm**PLACE:** Hiroshima Minato Koen (park), Minami-ku**ACCESS:** Take the No. 1, 3 or 5 streetcar bound for Hiroshima Port and get off at the last stop, Hiroshima Port.**PARTICIPATION FEE:** High school students and up-¥6,000

Junior high and elementary school students-¥3,000

**HOW TO APPLY:** Applications are accepted online.(check the HP (<http://www.sweets-marathon.jp>) for more information.)

Deadline for application – Mon., Feb. 20, 2017

❖ In the event that all application slots are filled, applications will be closed before Feb. 20.

**INQUIRIES:** Sweets Marathon Office 03-6848-7284 (Mon. – Fri., 10:00am – 6:00pm)HP: <http://www.sweets-marathon.jp>

▣ This is an event in which you can enjoy both running a marathon and eating sweets. “Sweets stations” will be set up instead of water stations on the marathon course. You can eat as much as you like of various kinds of small-sized sweets at each station. Sweets kiosks and Hiroshima Minato Marché will also be set up

Please feel free to contact the International Exchange Lounge at 082-247-9715.

E-mail: [golounge@pcf.city.hiroshima.jp](mailto:golounge@pcf.city.hiroshima.jp)

October 2016



## Events Held on Miyajima



**Sat., October 15**

### Kikka-sai (Chrysanthemum-Offering) Festival きっかさい 菊花祭

**TIME:** From 5:00pm onward

**PLACE:** Itsukushima Shrine, Miyajima

**ACCESS:** Get off at JR Miyajima-guchi Station (JR Sanyo Line) or the Miyajima Streetcar Stop (Hiroden Streetcar Miyajima Line), then take a ferry to Miyajima.

**FEE:** Admission fee for Itsukushima Shrine

[ Adults & University students-¥300, High school students- ¥200  
Junior high & Elementary school students-¥100 ]

**INQUIRIES:** Itsukushima Shrine 0829-44-2020

☐ *Bugaku*, musical court dancing will be performed after a ritual. Chrysanthemums will be dedicated to the gods during this *Bugaku* Performance.

**Sun., October 16**

### Miyajima Osuna-yaki Festival みやじま すなやき 宮島お砂焼まつり

**TIME:** 10:00am – 3:00pm

**PLACE:** Around Miyajima-guchi Pier, Hatsukaichi City

**ACCESS:** Get off at JR Miyajima-guchi Station (JR Sanyo Line) or Miyajima-guchi Streetcar Stop (Hiroden Miyajima Line). Walking time to destination: 3 – 5 minutes.

**INQUIRIES:** Executive Committee (*Ono-cho Shoko Kai*) 0829-20-0021

☐ Miyajima *Osuna-yaki* is a type of ceramic produced in Hatsukaichi City. A ceramics market will be held.

**Sun., October 23**

### San-oh Shrine Festival さんのうじんじやさい 三翁神社祭

**TIME:** From 10:00am onward

**PLACE:** San-oh Shrine, Miyajima

**ACCESS:** Get off at JR Miyajima-guchi Station (JR Sanyo Line) or Miyajima Streetcar Stop (Hiroden Streetcar Miyajima Line), then take a ferry to Miyajima.

**INQUIRIES:** Itsukushima Shrine 0829-44-2020

☐ *Bugaku*, musical court dancing will be performed.

**Thurs., November 3**

### Fudo-myo-oh Festival いつくしまだいぶつどうみょうおうさいとう ご ま き がん ほう しょう 厳 島大仏不動明王柴灯護摩祈願法要

**TIME:** From 1:00pm onward

**PLACE:** Daiganji Temple, Miyajima

**ACCESS:** Get off at JR Miyajima-guchi Station (JR Sanyo Line) or Miyajima Streetcar Stop (Hiroden Streetcar Miyajima Line), then take a ferry to Miyajima.

**INQUIRIES:** Daiganji Temple 0829-44-0179

☐ After a ritual, you can observe a walking over hot coals ceremony and may able to try it out, yourself.



Please feel free to contact the International Exchange Lounge at 082-247-9715.

E-mail: [golounge@pcf.city.hiroshima.jp](mailto:golounge@pcf.city.hiroshima.jp)

October 2016



## Events Held Outside of Hiroshima City

### Sat., Sun. & national holidays

#### Sake Brewery Opening ようこそ醸華町西条 じょう か まちさいじょう

**PLACE:** Sake Breweries, Higashihiroshima City

**ACCESS:** Get off at JR Saijo Station (JR Sanyo Line).

**FEE:** Free

**INQUIRIES:** Saijo Sakagura-dori Kanko Annai-jo

Tel. & Fax 082-421-2511 (10:00am – 4:00pm, closed on Mondays)

▣ Some sake breweries open to the public on Sat., Sun. & national holidays. Signboards with the words “ようこそ醸華町西条” (“Yokoso Jokamachi Saijo”) will be placed in front of the opened breweries.

### Sat., September 17 – Sun., October 23

#### Autumn Festival at Bihoku Kyuryo Park



こくえいびほくきゅうりょうこうえん あき  
国営備北丘陵公園「秋まつり」

**TIME:** 9:00am – 5:00pm ☆ Entry allowed up to 4:00pm.

**PLACE:** Kokuei Bihoku Kyuryo Koen, Shobara City

**ACCESS:**

- ① From JR Nanatsuka Station (JR Geibi Line), walking time to destination is 20 minutes.
- ② From JR Bingo Shobara Station (JR Geibi Line), driving time to destination by taxi is 10 minutes.
- ③ From Shobara I.C. on the Chugoku Expressway, driving time to destination is 5 – 10 minutes.
- ④ From Miyoshi Higashi I.C. on the Chugoku Odan Expressway, driving time to destination is 15 minutes.

**ADMISSION FEE:** Adults-¥410 Children-¥80

Senior (65 years and up)-¥210 (Identification showing your birth date is required.)

**INQUIRIES:** Bihoku Koen Kanri Center 0824-72-7000 HP: <http://www.bihoku-park.go.jp/>

### Sun., October 2 (Tentative)

#### Yabusame at Hori Hachiman Shrine

ほりはちまんじんじやぶさめしんじ  
堀八幡神社流鏑馬神事

**TIME:** ♦ Ritual is from noon onward ♦ Yabusame Performance is from 1:00pm onward

**PLACE:** Hori Hachiman Shrine & Tonoga Yabusame Horse Riding Ground, Akiota-cho

**ACCESS:** ① Take a bus from JR Kabe Station (JR Kabe Line) and get off at Togochi I.C. Bus Center.  
Driving time to destination: 5 minutes

② From Togochi I.C. on the Chugoku Expressway, driving time to destination is 5 minutes.

**INQUIRIES:** Hori Hachiman Shrine 0826-22-0651

Akiota-cho Kanko Kyokai (Tourist Association) 0826-28-1800

▣ Yabusame is the traditional art of shooting arrows from horseback. It is a rare opportunity to see yabusame in Hiroshima Prefecture.

### Sun., October 2

#### Shishimai (Lion Dance) in Fukuda

ふくだ ししまい  
福田の獅子舞

**TIME:** Shishimai performance will start from 2:30pm onward.

**PLACE:** Inari Shrine, Fukuda-cho, Takehara City

**ACCESS:** From JR Daijo Station (JR Kure Line), walking time to destination is 15 minutes.

**INQUIRIES:** Takehara City Kanko Kyokai (Tourist Association) 0846-22-4331

▣ The Fukuda-no-shishimai, or “Lion Dance”, is designated as an intangible cultural asset of Hiroshima Prefecture.



Please feel free to contact the International Exchange Lounge at 082-247-9715.

E-mail: [golounge@pcf.city.hiroshima.jp](mailto:golounge@pcf.city.hiroshima.jp)

October 2016

**Sat., October 8****Onomichi Akari (Lantern) Festival** おのみちあか 尾道灯りまつり**TIME:** 6:00pm – 9:00pm**PLACE:** Around JR Onomichi Station (JR Sanyo Line) & the route to old temples, etc., Onomichi City**ACCESS:** Get off at JR Onomichi Station (JR Sanyo Line).**INQUIRIES:** Onomichi Akari Festival Executive Committee (inside Onomichi City Hall) 0848-38-9184

▣ About 30,000 paper lanterns will illuminate Onomichi City.

▣ This will be postponed until Oct. 9 if it rains on the 8<sup>th</sup>.**Sat., October 8****Kozonori at Tsuji Hachiman Shrine** つじはちまん こうぞのり 辻八幡の神楽入**TIME:** From 9:00pm onward**PLACE:** Tsuji Hachiman Shrine, Kisa-cho, Miyoshi City**ACCESS:** From JR Kisa Station (JR Fukuen Line), driving time to destination is 10 minutes.**INQUIRIES:** Miyoshi City Hall, Kisa Branch Office 0824-43-3112

▣ Kozonori is a parade with lanterns and a traditional ceremony that has been performed over the past 200 years. It is designated as one of Hiroshima Prefecture's intangible folklore cultural assets.

**Sat., October 8 & Sun., October 9****2016 Sake Matsuri** 2016 さけ 酒まつり**TIME:** ♦ Oct. 8: 10:00am – 8:00pm ♦ Oct. 9: 10:00am – 5:00pm**PLACE:** Around JR Saijo Station, Higashi Hiroshima City**ACCESS:** Get off at JR Saijo Station (JR Sanyo Line).**INQUIRIES:** Higashi Hiroshima-shi Kanko Kyokai (Tourist Association) 082-420-0330URL: <http://sakematsuri.com/>☺ **Sake Hiroba** ❖ You can taste about 1,000 kinds of sake from around Japan.**TIME:** ♦ Oct. 8: 10:00am – 8:00pm ♦ Oct. 9: 10:00am – 5:00pm

✧ Entry is allowed up to 1 hour prior to closing.

**ADMISSION TICKETS:** ¥2,100 (Advance tickets will also be sold.)

▣ Remember, drunk-driving is strictly prohibited!

**Sun., October 9****Nagao Shrine Yudate Kagura Performance** ながおじんじや ゆだてかぐら 長尾神社湯立神楽**TIME:** From 1:00pm onward**PLACE:** Nagao Shrine, Akiota-cho**ACCESS:** ① Take a bus bound for Sandankyo from Hiroshima Bus Center (Sogo Hiroshima Department Store, 3F) and get off at Kake-chuo.

② From Togochi I.C. on the Chugoku Expressway, driving time to destination is 10 minutes.

**INQUIRIES:** Nagao Shrine 0826-22-0311

Akiota-cho Kanko Kyokai (Tourist Association) 0826-28-1800



Please feel free to contact the International Exchange Lounge at 082-247-9715.

E-mail: [golounge@pcf.city.hiroshima.jp](mailto:golounge@pcf.city.hiroshima.jp)

October 2016

**Mon., October 10****Sakagura Walking Tour (Free)** さかぐら 酒蔵のまち てくてくガイド**TIME:** Tour will start on an as-needed basis between 10:00am and 11:00am.**MEETING PLACE:** Saijo Sakagura-dori Kanko Annai-jo (Tourist Information Center), Higashihiroshima City**ACCESS:** Get off at JR Saijo Station (JR Sanyo Line).**PARTICIPATION FEE:** Free**INQUIRIES:** Saijo Sakagura-dori Kanko Annai-jo Tel. & Fax 082-421-2511

☐ A volunteer guide will show you Sakagura-dori (Sake Brewery Street). During the tour you will be able to taste sake and the purified water that is used to make it.

☐ A regular guided tour (fee-based) is also held every day except on the 10<sup>th</sup>. An English speaking guide is available. Please contact the Saijo Sakagura-dori Tourist Information Center in advance.

**Sat., October 15****Mochi-tsuki (rice cake pounding) Ceremony in Onomichi** もち しんじ 餅つき神事**TIME:** 6:00pm – 9:00pm**PLACE:** Sanba Ushitora Shrine, Onomichi City**ACCESS:** Get on a “Higashi-yuki” Bus from JR Onomichi Station (JR Sanyo Line) and get off at Sanba. Walking time to destination: 5 minutes**INQUIRIES:** Sanba Ushitora Shrine 0848-37-6068 (Inquiries will only be accepted on Oct. 15.)

☐ After purifying their bodies with seawater, young men walk around the town carrying a wooden rice mortar. Then, they will pound *mochi* with a pestle called “*Sasuri*” in Japanese.

**Sat., October 15 & Sun., October 16** ❖ Main events will be held on the 16<sup>th</sup>.**Festival at Oyama Shrine, Hikibune Ceremony** おやまじんじやれたいさい ひきぶねしんじ 大山神社例大祭・曳船神事**TIME:** ♦ Oct. 15 ⇨ From 5:00pm onward ♦ Oct. 16 ⇨ From 8:00am onward**PLACE:** Oyama Shrine, Innoshima-habu-cho, Onomichi City**ACCESS:** From Innoshima-kita I.C. on the Shimanami-kaido Expressway, driving time to destination is 10 minutes.**INQUIRIES:** Oyama Shrine 0845-22-0827

☐ *Hikifune Shinji* and *Gangi Shinji* are the highlights of the festival. *Hikifune Shinji* is a ritual where people pull a boat up to the shrine and have it go through a *Shinto* ritual. *Gangi Shinji* is also a ritual where people carrying a *mikoshi* (portable shrine) run up fifty-five stairs to the shrine.

**Sun., October 16****Shirakabe Festival** しらかべ 白壁まつり**PLACE:** Around Joge-cho Shopping Street, Joge-cho, Fuchu-shi**ACCESS:** ① From JR Joge Station (JR Fukuen Line), walking time to destination is 10 minutes.

② From Shobara I.C. on the Chugoku Expressway, driving time to destination is 30 minutes.

**INQUIRIES:** Executive Committee (Joge-cho Shoko Kai) 0847-62-3504

☐ Joge-cho is well known as a town of white-walled buildings.

**Sun., October 16****Kinosho Kane-taiko (traditional Japanese drum) Dance** きのしょうかねたいこおど 木ノ庄鉦太鼓踊り**TIME:** From 1:00pm onward**PLACE:** Kinosho Higashi Shogakko (Elementary School) and Kinosho Heitaka Hachiman Shrine, Onomichi City

Please feel free to contact the International Exchange Lounge at 082-247-9715.

E-mail: golounge@pcf.city.hiroshima.jp

October 2016

**ACCESS:** From JR Onomichi Station (JR Sanyo Line), driving time to destination is 20 minutes.

**INQUIRIES:** *Mingei Hozon-kai* 0848-48-0943 (Asano)

☐ It is designated as Hiroshima Prefecture's intangible cultural folklore asset.

**Sun., October 16**

## Culture and History Festival in Shimo-kamagari, Chosen Tsushin-shi

### Parade

しもかまがり ぶんか れきし さいてん ちょうせんつうしんしさいげんぎょうれつ  
下蒲刈 文化と歴史の祭典 朝鮮通信使再現行列

**TIME:** Parade ⇨ 10:45am – 1:00pm

**PLACE:** The parade will go from *Shimo-kamagari Shimin Center* to *Shimo-kamagari Chugakko* (junior high school), Shimo-kamagari-cho, Kure City

**ACCESS:** Take a bus bound for Okitomo Tenmangu from JR Hiro Station (JR Kure Line) and get off at San-no-se.

**INQUIRIES:** *Ranto Bunka Shinko Zaidan* 0823-65-2029

☐ Shimo-kamagari-cho was once a flourishing port-town used as *sankin kotai* (daimyo's, or feudal lord's, alternate-year residence in Edo) and a stop for the *chosen tsushin-shi* (delegations from Korea to the Tokugawa Shogunate) go on their route to Edo (now Tokyo) during the Edo period.  
The *Chosen Tsushin-shi* parade will be re-enacted at this event.

**Thurs., October 20**

### Hatsuka-no-ichi Market

はつか いち  
廿日の市

**TIME:** 8:30am – 10:30am

**PLACE:** *Shimin Plaza* (in front of Hatsukaichi City Hall), Hatsukaichi City

**ACCESS:** From Hatsukaichi Shiyakusho-mae (Hiroden Streetcar Miyajima Line), walking time to destination is 10 minutes.

**INQUIRIES:** *Hatsukaichi Kanko Kyokai* (Tourist Association) 0829-31-5656



**Fri., October 21 – Mon., November 14**

## The 61<sup>st</sup> Kikka-ten (Chrysanthemum Exhibition) in Fukuyama

だい かいふくやまきつ かつてんらんかい  
第61回福山菊花展覧会

**PLACE:** *Fukuyama-jo Koen* (Castle Park) and in front of JR Fukuyama Station, Fukuyama City

**ACCESS:** From JR Fukuyama Station (JR Sanyo Line), walking time to destination is 5 minutes.

**ADMISSION FEE:** Free

**INQUIRIES:** *Bunka Kanko Shinko Bu*, Fukuyama City Hall 084-928-1043

☐ 1,500 potted chrysanthemums will be displayed. A *koto* (traditional Japanese harp) concert and tea ceremony will be held on November 3. A *bonsai* exhibition will also be held from Nov. 5 to 9.

**Sat., October 22 – Sun., November 13**

## Kikka-ten (Chrysanthemum Exhibition) in Onomichi

おのみちきつ かつてん  
尾道菊花展

**TIME:** 9:00am – 5:00pm

**PLACE:** *Senkoji Koen* (Park), Onomichi City

**ACCESS:** ① Get off at JR Onomichi Station (JR Sanyo Line) and walk 15 min. to the ropeway station. It is a 3 min. ride to the park.

② From JR Onomichi Station (JR Sanyo Line), walking time to destination is 30 minutes.

**ADMISSION FEE:** Free

**INQUIRIES:** *Kanko Ka*, Onomichi City Hall 0848-38-9184

☐ *Senkoji Koen* will be decorated with chrysanthemums.

Please feel free to contact the International Exchange Lounge at 082-247-9715.

E-mail: [golounge@pcf.city.hiroshima.jp](mailto:golounge@pcf.city.hiroshima.jp)

October 2016

**Sat., October 29 & Sun., October 30****Takehara *Shokei-no-michi* (Candle Festival)**まちな たけあか しょうけい みち  
町並み竹灯り たけはら 憧憬の路**TIME:** 5:00pm – 9:00pm**PLACE:** Around the Takehara Historical Buildings Area, Takehara City**ACCESS:** From JR Takehara Station (JR Kure Line), walking time to destination is 15 minutes.**INQUIRIES:** Executive Committee (inside Takehara City Hall) 0846-22-7745

▣ The Takehara historical buildings area will be illuminated with candles.

**Sat., October 29 – Sat., November 5****Tojo Machinami Burari Sanpo Gallery**とうじょう さんぽ  
東 城 まちなみぶらり 散歩ギャラリー**TIME:** 10:00am – 4:00pm**PLACE:** Tojo, Tojo-cho, Shobara City**ACCESS:** ① From JR Tojo Station (JR Geibi Line), walking time to destination is 5 minutes.

② From Tojo I.C. on the Chugoku Expressway, driving time to destination is 5 minutes.

**INQUIRIES:** Tojo Machinaka Koryu Shisetsu Ebisu 08477-3-0788

▣ Pictures, craft products, etc. which have been in a family for generations in Tojo-cho will be displayed in shops and houses.

▣ “Otori”, a traditional festival from the Edo Period (A.D. 1603–1867) will be held on Nov. 3.

**Tue., November 1 – Thurs., November 3****Onomichi *Betcha* Festival**おのみち まつり  
尾道ベッチャー 祭**TIME:** ♦ Nov. 1 ⇨ From 6:00pm onward ♦ Nov. 2 ⇨ From 11:00am onward♦ Nov. 3 ⇨ From 7:30am onward ☆ The festival on the 3<sup>rd</sup> is the highlight of these three days.**PLACE:** Kibitsu Shrine (Ikkyu Shrine) and throughout Onomichi City**ACCESS (Kibitsu Shrine (Ikkyu Shrine)):**

From JR Onomichi Station (JR Sanyo Line), walking time to destination is 8 minutes.

**INQUIRIES:** Onomichi Kanko Kyokai (Tourist Association) 0848-37-9736▣ A *mikoshi*, or portable shrine, guided by *Shishi* (a special type of lion) and three lion-masked people called *Beta*, *Soba* and *Shoki* will be carried around the city to drive away evil spirits.**Thurs., November 3****Buddhist Rites for Used Tea Whisks**ちやせんく ようほうようなら く ちやしき  
茶筴供養法要並びに供茶式**TIME:** 11:00am – noon**PLACE:** Kozanji Temple & Kozanji Temple Museum, Onomichi City**ACCESS:** ① Take a *Shimanami Liner* express bus from Hiroshima Bus Center (Sogo Hiroshima Department Store, 3F) and get off at Setoda bus stop (a 1 hour and 40 min. bus ride). Then take another bus from there and get off at Kozanji-mae.☆ Reservations are required to take a *Shimanami Liner*. Call the Hiroko Reservation Center (082-238-3344; 9:00am – 6:00pm) for more information.

② Get on a ferry for Setoda from Onomichi Pier (in front of JR Onomichi Station) and get off at Setoda Port. Walking time to destination: 10 minutes

**FEE FOR THE CEREMONY:** Free, but payment of the museum's admission fee is required (see below).**ADMISSION FEE FOR THE TEMPLE & THE MUSEUM:**

Adults &amp; University students-¥1,200 High school students-¥700

Junior high school students and under-Free

**INQUIRIES:** Kozanji Temple & Kozanji Temple Museum 0845-27-0800

▣ Green tea and traditional Japanese confections will be served to visitors.



Please feel free to contact the International Exchange Lounge at 082-247-9715.

E-mail: [golounge@pcf.city.hiroshima.jp](mailto:golounge@pcf.city.hiroshima.jp)

October 2016



**Thurs., November 3****Otori** とお  
お通り**TIME:** Noon – 4:00pm**PLACE:** Throughout Tojo-cho, Shobara City**ACCESS:** ① From JR Tojo Station (JR Geibi Line), walking time to destination is 10 minutes.

② From Tojo I.C. on the Chugoku Expressway, driving time to destination is 3 minutes.

**INQUIRIES:** Tojo-cho Shoko Kai 08477-2-0525

▣ This is a traditional festival from the Edo Period (A.D. 1603–1867).

**Sat., November 5 & Sun., November 6****Mihara Ukishiro (Mihara Castle) Festival** みはらうきしろ  
三原浮城まつり**TIME:** 1:00pm – 8:30pm**PLACE:** Around JR Mihara Station and Mihara Port, Mihara City**ACCESS:** Get off at JR Mihara Station (JR Sanyo Line).**INQUIRIES:** Executive Committee (Mihara Tourist Association) 0848-63-1481

▣ Samurai parade, tea ceremony, selling of Mihara's regional products, tea ceremony, etc.

**Sat., November 12****2016 Kinken Senbatsu Yushu Kagura Performance**きんけんせんばつゆうしゅう かぐらはっぴょうたいかい  
**2016近県選抜優秀神楽発表大会****TIME:** From 12:30pm onward (the venue will open at 10:30am.)**PLACE:** Chiyoda Undo Koen Sogo Taiikukan (Gymnasium), Kitahiroshima-cho**ACCESS:** From Chiyoda I.C. on the Chugoku Expressway, driving time to destination is 5 minutes.**TICKET:** Advance: Adults-¥2,500, Children (junior high school students and under)-Free

(Advance tickets are available at Hiroshima Yume Plaza on Hondori Shopping Street.)

At the door: Adults-¥3,000 Children (junior high school students and under)-Free

**INQUIRIES:** Kitahiroshima-cho Kanko Kyokai (Tourist Association) 0826-72-6908**Sat., November 26 & Sun., November 27****The 9<sup>th</sup> 2-Day Hiroshima Peace Walk in Hatsukaichi**だい かい  
**第9回ピースウォークひろしまツーデー in 廿日市** はつかいち**COURSE:** ♦ Nov. 26: Miyajima Course

♦ Nov. 27: A-bomb Dome and south area of Hiroshima City Course

**STARTING PLACE:** Shingu Chuo Koen (park), Hatsukaihi City**ACCESS:** From Hatsukaichi Shiyakusho-mae Streetcar Stop (Hiroden Miyajima Line), walking time to destination is 4 minutes.**PARTICIPATION FEE:**

## ★ Fee for 2-Day ★

♦ Advance application: Adults-¥2,000 Senior & Junior high school students-¥1,000  
Elementary school students and under-Free♦ Application on the day of: Adults-¥2,100 Senior & Junior high school students-¥1,100  
Elementary school students and under-Free

## ★ Fee for 1-Day ★

♦ Advance application: Adults-¥1,000 Senior & Junior high school students-¥500  
Elementary school students and under-Free♦ Application on the day of: Adults-¥1,100 Senior & Junior high school students-¥600  
Elementary school students and under-Free

Please feel free to contact the International Exchange Lounge at 082-247-9715.

E-mail: [golounge@pcf.city.hiroshima.jp](mailto:golounge@pcf.city.hiroshima.jp)

October 2016





**HOW TO APPLY:** Fill out prescribed application form and make a payment at a Japan Post Bank (ゆうちょ銀行) by Thurs., November 10. The receipt you receive at the post bank will be the participation certificate on the event day, so please make sure to keep and bring it on the walking day.

**INQUIRIES:** Executive Committee 082-218-0511 or 090-1185-8332 hwa.hiroshima@gmail.com

☐ Elementary school students and under should be accompanied by their guardians. People who need care should also be accompanied by their escorts.

☐ Please bring lunch with you.

## Events Held in Yamaguchi Prefecture

**Sun., October 9**

### The 4<sup>th</sup> Sake Festival at Yuda Onsen だい かい ゆ だ おんせんさけ 第4回湯田温泉酒まつり

**TIME:** 11:00am – 5:00pm

**PLACE:** Around Inoue Koen (park), Yuda Onsen, Yamaguchi City

**ACCESS:** From JR Yuda Onsen Station (JR Yamaguchi Line), walking time to destination is 10 minutes.

**ADMISSION FEE:** Free ✧ Food and drink will incur extra charges.

**INQUIRIES:** Executive Committee 083-966-0045

☐ You can taste Yamaguchi's local sake in this event.

☐ Remember, drunk-driving is strictly prohibited!

**Sat., October 15 & Sun., October 16**

### The 60<sup>th</sup> Iwakuni Festival だい かい いわくにまつり 第60回岩国祭

**TIME:** ♦ Oct. 15: 4:30pm – 8:20pm ♦ Oct. 16: 9:30am – 4:40pm

**PLACE:** In front of the JR Iwakuni Station, Iwakuni City

**ACCESS:** Get off at JR Iwakuni Station (JR Sanyo Line).

**INQUIRIES:** Iwakuni Shoko Kaigi-sho 0827-21-4201

☐ Various parades will be held at this festival.



**Thurs., November 3**

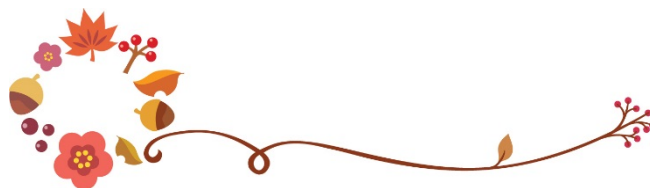
### Inaho Festival (Wedding of Foxes) いなほまつり 稲穂祭 (きつねの嫁入り)

**PLACE:** Hanaoka Fukutoku Inari Shrine, Kudamatsu City

**ACCESS:** It is 20 min. by bus from JR Kudamatsu Station (JR Sanyo Line).

**INQUIRIES:** Hanaoka Fukutoku Inari Shrine 0833-43-4500

☐ A bride couple wearing white fox masks parades through an old street in the city with their “relatives” and “attendants”.



Please feel free to contact the International Exchange Lounge at 082-247-9715.

E-mail: [golounge@pcf.city.hiroshima.jp](mailto:golounge@pcf.city.hiroshima.jp)

October 2016

## Other Event

### Setouchi Triennale 2016

せとうちこくさいげいじゅつさい  
瀬戸内国際芸術祭2016



PERIOD: ❶ ~~Spring: Sun., March 20 – Sun., April 17~~

❷ ~~Summer: Mon., July 18 – Sun., September 4~~

❸ ~~Autumn: Sat., October 8 – Sun., November 6~~

Finished

PLACE: Around the 12 Islands of the Seto Inland Sea (below), Takamatsu and Uno Naoshima  
 (Teshima, Megijima, Ogijima, Shodoshima, Oshima, Inujima, Shamijima (spring only),  
 Honjima (autumn only), Takamijima (autumn only), Awashima (autumn only),  
 Ibukijima (autumn only), Takamatsu & Uno Port)

OFFICIAL URL: <http://setouchi-artfest.jp/en/>

✧ Please see this official homepage for more information such as ticket information and access to each island.

▣ This year is also the triennial international art festival. Please take this opportunity to enjoy art and the small islands of the Seto Inland Sea.



Please feel free to contact the International Exchange Lounge at 082-247-9715.

E-mail: [golounge@pcf.city.hiroshima.jp](mailto:golounge@pcf.city.hiroshima.jp)

October 2016

# Municipal Facilities



## Facilities






(Address / Telephone / Open Hours / Closed / Admission Fee / URL)

Admission is generally allowed up to 30 min. prior to closing.


## Hiroshima City Forest Park & Insectarium


(173 Fujigamaru, Fukuda-cho, Higashi-ku 732-0036 / Forest Park: 899-8241, Insectarium: 899-8964 / Forest Park: 9:00am - 4:30pm; Insectarium: 9:00am - 4:30pm / Closed: Forest Park - Wednesdays; Insectarium - Wednesdays / Admission Fees for the Insectarium: Adults-¥510, Seniors & High school students-¥170, Junior high & Elementary school students-Free (Free admission for high school students on Saturdays (except on national holidays and during school holidays)) / Forest Park: <http://www.daiichib-shitei.com/forest/> Insectarium: <http://www.hiro-kon.jp/>)

## Events at the Forest Park

-  **Lecture on the Grass Whistle** / Sun., Oct. 16 / 1:00pm - 3:00pm / *Kyukei-jo, Shibafu Hiroba* / Fee: Free
-  **Kids Sports Festival** / Sun., Oct. 9 & Mon., Oct. 10 / 10:00am - 2:00pm / For elementary school students and under / *Chuo Hiroba* /  
 ◇ The first 200 participants will be accepted for each day on the day of.  
 ◇ This activity will be canceled if it rains.
-  **Try New Sports: Kubb & Molkky** / Sat., Oct. 15 / 10:00am - 3:00pm / *Shibafu Hiroba* /  
 ◇ The first 50 participants will be accepted on the day of.
-  **Make & Fly a Paper Airplane** / Sun., Oct. 16 /  
 ① 9:30am ② 1:00pm / *Shibafu Hiroba* / For elementary school students and under /  
 Participation fee: ¥200 ◇ The first 100 participants will be accepted for each time slot on the day of.  
 ◇ This activity will be canceled if it rains.
-  **Let's Climb a Tree** / Sat., Oct. 22 /  
 ① 10:00am - noon ② 1:00pm - 3:00pm / For elementary school students and under / *Shibafu Hiroba* /  
 ◇ The first 80 participants will be accepted from 9:30am on the day of.  
 ◇ This will be canceled if it rains.

## Events at the Insectarium

-  **Autumn Exhibition: Mystery of Mimicry** / Sat., Oct. 8 - Sun., Nov. 6

-  **Saturday Insect Lecture** / 1:30pm - 2:30pm / Participants will be accepted on the day of. (except ③&④)


- ① **Secrets of Beehives** / Sat., Oct. 1
- ② **Mantis Eggs** / Sat., Nov. 12
- ③ **Making a Beetle and Stag Beetle Specimen** / Sat., Dec. 17  
 ◇ Advance reservations are required.
- ④ **Owning Beetle** / Sat., Mar. 4, 2017  
 ◇ Advance reservations are required.

## The Hiroshima Botanical Garden


(3-495 Kurashige, Saeki-ku 731-5156 / 922-3600 / 9:00am - 4:30pm / Closed on Fridays / Adults-¥510, Seniors & High school students-¥170, Junior high and Elementary school students-Free (Free admission for high school students on Saturdays (except on national holidays and during school holidays)) / <http://www.hiroshima-bot.jp/>)

<Exhibitions> Exhibitions will close at 3:30pm on their last day.



### ◆ *Tenji Shiryō-shitsu*

-  **Special Exhibition: Plants in Miyajima** / Sat., Oct. 1 - Fri., Dec. 23


### ◆ *Tenji Onshitsu (hothouse exhibitions)*

-  **Cactus** / Sat., Oct. 1 - Thurs., Oct. 13


### ◆ *Okugai Tenji-jo (outdoor exhibitions)*

-  **Gardening Contest Exhibition** / Sat., Oct. 1 - Mon., Oct. 10
-  **Hanging Baskets** / Wed., Oct. 5 - Mon., Oct. 10

## <Events>

-  **Junior Project** / Sun., Oct. 9 / ① 11:00am - noon ② 1:30pm - 2:30pm

## <Lectures>

-  **Gardening Demonstration: Group Planting** / Sun., Oct. 2 / 2:15pm - 3:00pm

## Children's Museum of Culture and Science

(5-83 Moto-machi, Naka-ku 730-0011 / 222-5346 / 9:00am - 5:00pm / Closed on Oct. 3, 11, 12, 17, 24 & 31 / Admission fee for planetarium is required (see below). / <http://www.pyonta.city.hiroshima.jp/>)

Please feel free to contact the International Exchange Lounge at 082-247-9715.

E-mail: [golounge@pcf.city.hiroshima.jp](mailto:golounge@pcf.city.hiroshima.jp)

October 2016

★ The Planetarium will be closed from Sun., October 22, 2016 to Tue., January 3, 2017 due to renovations.

### ★ Planetarium ★

#### 👉 Admission Fee for Planetarium:

Adults-¥510, Seniors & High school students-¥250, Junior high & Elementary school students-Free

✧ Free admission for high school students on Saturdays (except on most national holidays and during school holidays).

Admission fee for adults is ¥250 on the second Saturday of every month (except on most national holidays and during school holidays).

☆ Planetarium Program: Pyonta vs Hatenaman / Until Fri., Oct. 21 / ♦ Weekdays: 11:00am

♦ Sat., Sun., national holidays: ① 10:00am ② 3:00pm / Adults-¥510, Seniors & High school students-¥250

☆ Planetarium Constellation Projection

♦ Aurora / Thurs., Jul. 21 - Sun., Jan. 15 (except from Sun., Oct. 22, 2016 to Tue., Jan. 3, 2017) / ♦ Weekdays: 2:00pm

♦ Sat., Sun., national holidays: ① 11:00am ② 2:00pm / Adults-¥510, Seniors & High school students-¥250

☆ Full Dome Screen Film: Walking with a Dinosaur / Until Fri., Oct. 21 / ♦ Weekdays: 3:00pm ♦ Sat., Sun., national holidays: 1:00pm / Adults-¥510, Seniors & High school students- ¥250

☆ Refretarium: Autumn Program / Until Fri., Oct. 21 (except Sundays) /

♦ Weekdays: 1:00pm ♦ Sat., national holidays: 4:00pm / High school students and up-¥200

✧ This is a program to refresh your mind and body during lunch time while watching the starry sky and listening to music. Although the main target of this program is adults, anyone who wishes to rejuvenate themselves is welcome.

☆ Starry Sky Tour:

♦ Tonight's Starry Sky & Jupiter Exploration / Sundays until Sun., Oct. 16 / 4:00pm / Adults-¥510, Seniors & High school students-¥250

### ★ Events ★

☆ Craft Workshops / Sun., Oct. 2 & 9 / 1:00pm - 3:30pm / For children under elementary school entry age, elementary school students (1<sup>st</sup> - 3<sup>rd</sup> grade) and their guardians / 3F, Kosaku-shitsu (Craft Room) / Fee: ¥30 for materials

✧ Each day's program is different. For more information, please contact the museum.

☆ Science Show: Balloons / Mon., Oct. 10 /

① 1:30pm - 2:00pm ② 3:00pm - 3:30pm / 1F, Science Studio / Fee: Free

★ The events listed below require advance applications.

To APPLY: Send an *ofuku-hagaki* (return postcard) to the museum, postmarked by each event's application deadline with the following information: applicants' names, address, telephone number, school year and the event name and time you wish to attend.

### Science Workshop

♦ Nature Observation at Mt. Futaba / 二葉山の自然観察 ~シリブカガシの森へ行こう~ ("Futaba-yama no shizen kansatsu ~shiribukagashi no mori e ikou~") / Sun., Nov. 6 / 10:00am - 12:30pm / For elementary school students / Fee: ¥300 / Closing date for applications: Sun., Oct. 23 ✧ 20 people will be selected at random by a drawing of names.

### Craft Workshops

♦ Make a Cloisonné Metal Wall Decoration /

七宝焼きの壁飾り ("Shippo-yaki no kabekazari") / Thurs., Nov. 3 / 9:30am - 3:30pm / For elementary (3<sup>rd</sup> - 6<sup>th</sup> grade) & junior high school students / Fee: ¥1,000 / Closing date for applications: Thurs., Oct. 20 ✧ 12 people will be selected at random by a drawing of names.

♦ Wood Craft Workshop / こども木工教室 ("Kodomo mokko kyoshitsu") / Sat., Nov. 5 / 9:30am - 3:30pm / For elementary (3<sup>rd</sup> - 6<sup>th</sup> grade) & junior high school students / Fee: ¥1,000 / Closing date for applications: Sat., Oct. 22 ✧ 12 people will be selected at random by a drawing of names.

♦ Craft Workshop for Adults: Clay Art Flower / 大人の創作教室：パンフラワー ("Otona no sosaku kyoshitsu: pan flower") / Fri., Nov. 11 / 9:30am - noon / For High school students and up / Fee: ¥2,000 / Closing date for applications: Fri., Oct. 28 ✧ 12 people will be selected at random by a drawing of names.


### Other Workshop

♦ Picture Book-Making / 紙ニュケーション講座 オリジナルミニ絵本を作ろう! ("Kami-nication kouza: original mini ehon wo tsukurou!") / Sat., Nov. 12 / 1:30pm - 4:00pm / For elementary & junior high school students / 3F, Kosaku-shitsu / Fee: ¥200 / Closing date for applications: Sat., Oct. 29 ✧ 20 people will be selected at random by a drawing of names.

Please feel free to contact the International Exchange Lounge at 082-247-9715.


E-mail: golounge@pcf.city.hiroshima.jp

October 2016

 **Hiroshima City Asa Zoological Park**  
(Asa-cho Dobutsuen, Asakita-ku 731-3355 / 838-1111 / 9:00am - 4:30pm / Open every day in October / Adults-¥510, Seniors & High school students- ¥170, Junior high & Elementary school students-Free / <http://www.asazoo.jp/>)


-  **Asa Zoo & "Miyaji-marine" (Miyajima Public Aquarium) Collaborating Event 2016: Stamp Rally** / Sat., Jul. 16 - Sun., Nov. 27
-  **Backyard Guide Tour** / Sat., Oct. 1, 8, 15 & 22 / ① 11:00am (except Oct. 29) ② 1:30pm / Please gather near the entrance at 9:00am on each activity day. The first 10 - 40 people can participate. The number of participants will differ depending on where you visit. We will explore a different place on each trip.
-  **Zoo Café ~ Animal Lecture by Zoo Keepers ~** / Sun., Oct. 2, 9, 16 & 23 / 1:00pm - 1:30pm
-  **Butter-making** / Sat., Oct. 8 / 10:00am - noon / Participation Fee: ¥100 ✧ The first 150 people will be accepted on the day of.
-  **Measuring Physical Fitness Event** / Sat., Oct. 15 / 10:00am - 12:30pm / For elementary school students and up  
✧ The first 300 people will be accepted on the day of.
-  **Hiroshima Toyo Carp Mini Shinkansen** / Sat., Oct. 22 / ① 11:00am - noon ② 2:00pm - 3:00pm ✧ The first 300 people will be accepted on the day of for each time slot.  
✧ This will be postponed until Oct. 23 if it rains on the 22<sup>nd</sup>.
-  **Halloween at the Zoo** / Sat., Oct. 29 / 9:00am - 4:00pm  
✧ Zoo shop's discount coupons will be given to visitors wearing face paint on the day of.  
✧ Face paint corner will also be set up (10:00am - noon).
-  **Giant Salamander Facility Tour** / Sat., Oct. 29 / 11:00am - 11:45am ✧ Reservations will be accepted from 9:00am at the main entrance until 20 spots are filled.
-  **Meet the Black Rhinoceros named Hana** / Sat., Oct. 29 / ① 1:30pm ② 1:45pm  
✧ Reservations will be accepted from 9:00am at the main entrance until 10 spots are filled for each time slot.  
✧ The black rhinoceros, *Hana*, is the world's oldest living black rhinoceros.
-  **Animal Weight & Length Quiz** / Sun., Oct. 30 / Ballots will be accepted from 11:00am to noon.  
✧ The measuring will start from 1:00pm.  
✧ The person who guesses the right answer will win a prize.

 **Numaji Transportation Museum (Hiroshima City Transportation Museum)**  
(2-12-2 Chorakuji, Asaminami-ku 731-0143 / 878-6211 / 9:00am - 5:00pm / Closed: Oct. 3, 11, 12, 13, 17, 24 & 31 / Adults-¥510, Seniors & High school students-¥250, Junior high school students or younger-Free / <http://www.vehicle.city.hiroshima.jp>)

 **The Museum's Special Exhibition: Road Safety** / Fri., Oct. 14 - Sun., Dec. 4

★ **Special Exhibition-Related Events** ★

- ◆ **Learn the Importance of Seat Belts** / Sat., Oct. 15 & Sun., Oct. 16 / ① 10:00am - noon ② 1:30pm - 3:30pm / Near the Museum Entrance (outside) / Fee: Free  
✧ This will be canceled if it is bad weather.
- ◆ **Step inside a Driving School's Instruction Car** / Sat., Oct. 22 & Sun., Oct. 23 / 9:00am - 5:00pm / 1F, *Tamokuteki Hall* / Fee: Free  
✧ The car engine will not be started.
- ◆ **Step inside a Police Car** / Sat., Oct. 29 / ① 10:00am - noon ② 1:30pm - 3:30pm / 1F, *Tamokuteki Hall* / Fee: Free  
✧ The car engine will not be started.
- ◆ **Ride a Police Motorcycle** / Sun., Oct. 30 / ① 10:00am - noon ② 1:30pm - 3:30pm / 1F, *Tamokuteki Hall* / Fee: Free  
✧ The motorcycle engine will not be started.
- ◆ **Children's Craft Workshops** / Sun., Oct. 23 & 30 / 1:00pm - 3:30pm / For preschoolers, elementary school students and their guardians / 1F, Craft Room / Fee: ¥50 for materials ✧ The first 100 groups can participate on each day.
- ◆ **Craft Workshop for Elementary School Students: Vehicle Town** / Sat., Oct. 22 / 1:00pm - 4:00pm / 1F, Craft Room / For elementary school students (1<sup>st</sup> - 4<sup>th</sup> grade students should be accompanied by their guardians.) / Fee: ¥500 for materials  
**TO APPLY:** Send an *ofuku-hagaki* (return postcard) with the applicant's name, name of the school the applicant belongs to, grade, address, telephone number, event date and the workshop name しょうがくせいこうさくきょうしつ **小学生工作教室：のりものタウン** ("Shogakusei kousaku kyoushitsu: norimono town") to the museum by Wed., Oct. 12. 20 people will be selected at random by a drawing of names for each time slot.

 **Science Show: Sound Experiment Show** / Oct. 8 (Sat.), 9 (Sun.) & 10 (Mon.) / ① 11:30am - 11:50am ② 1:30pm - 1:50pm ③ 2:30pm - 2:50pm / 1F, *Tamokuteki Hall* / Fee: Free

Please feel free to contact the International Exchange Lounge at 082-247-9715.

E-mail: [golounge@pcf.city.hiroshima.jp](mailto:golounge@pcf.city.hiroshima.jp)

October 2016



- 🚗 **Exhibition on a Streetcar Exposed to the A-Bomb** / Sat., Oct. 15 / ① 11:00am - noon ② 1:30pm - 3:00pm / *Okugai Hiroba* (outdoor open space) / Fee: Free  
 ✧ Exhibition will be canceled if it is bad weather.
- 🚗 **Vehicle Land: Playing with Toy Vehicles** / Sat., Oct. 15 & Sun., Oct. 16 / 1:00pm - 3:45pm / 1F, *Tamokuteki Hall* / Fee: Free
- 🚗 **Field Work: Walking an Old Way in Asaminami Area** / Sat., Oct. 29 / 9:00am - noon / Meeting Place: *Astramline* Ohara Station / For 16 years old and up / Participation fee: ¥100  
**To APPLY:** Send an *ofuku-hagaki* (return postcard) with all applicants' names, address, telephone number, age, event date and the event name **乗り物セミナー「旧街道を歩く」** ("Norimono seminar: kyu-kaido wo aruku") to the museum by Sat., Oct. 15. 30 people will be selected at random by a drawing of names.
- 👶 **Children's Craft Workshops** / Sun., Oct. 2, 9, 16 & Mon., Oct. 10 / 1:00pm - 3:30pm / For preschoolers, elementary school students and their guardians / 1F, Craft Room / Fee: ¥50 for materials ✧ The first 100 groups can participate on each day.

## ☁ **Hiroshima City Ebayama Museum of Meteorology**

(1-40-1 Eba-minami, Naka-ku 730-0835 / 231-0177 / 9:00am - 5:00pm / Closed on Mondays (except Oct. 10) & Oct. 11 / Adults-¥100, Seniors & High school students-¥50, Junior high & Elementary school students-Free (Admission free for high school students on Saturdays except during school holidays) / <http://www.ebayama.jp/>)

- ✳ **Science Show** / ① 1:30pm - 2:00pm ② 3:00pm - 3:30pm
  - ◆ **Experiments with Air & water** / Oct. 1 (Sat.), 2 (Sun.), 9 (Sun.) & 10 (Mon.)
  - ◆ **Science Magic** / Oct. 16 (Sun.), 22 (Sat.), 23 (Sun.), 29 (Sat.) & 30 (Sun.)
- ✳ **Science Workshops** / 1:00pm - 3:30pm / For junior high school students and under
  - ✧ The first 50 people will be accepted for each workshop from 10:00am on the day of.
  - ◆ **Hovercraft** / Sat., Oct. 8 / Fee: ¥70 for materials
  - ◆ **Dip Art** / Sat., Oct. 15 / ¥100 for materials
- ✳ **Nature Science: Nature of Mt. Ebayama** / Sun., Oct. 30 / 2:00pm - 3:30pm / Participation Fee: ¥50
  - ✧ The first 50 people will be accepted from 10:00am on the day of.

- ✧ Elementary school students and under should be accompanied by their guardians.
- ✧ This event will be held inside the museum if there is bad weather.

## 🏛 **Hiroshima City Museum of History and Traditional Crafts**

(2-6-20 Ujina-miyuki, Minami-ku 734-0015 / 253-6771 / 9:00am - 5:00pm / Closed on Mondays (except Oct. 10) & Oct. 11 / Adults-¥100, Seniors & High school students-¥50, Junior high school students and younger-Free / <http://www.hiroins-net.ne.jp/kyodo/>)

### 📖 **Special Exhibitions**

- ◆ **Life in the Past** / Sat., Sept. 3 - Sun., Dec. 4
- ◆ **Special Exhibition of Aki Fukudagi Bronze Ware** / Sat., Oct. 22 - Sun., Nov. 20

### 📖 **Workshops, etc.**

- ◆ **Make a *Dagashi* (molded confection)** / Thurs., Nov. 3 / 10:00am - 4:00pm / Fee: Free ✧ May require a participation fee.  
 ✧ Museum admission is free on Nov. 3 because it's Cultural Day.
- ◆ **Make a New Year's Greeting Card** / Sun., Nov. 27 / 1:00pm - 3:00pm / Elementary school students and their guardians / Fee: ¥200 (Admission fee for the museum is also required) ✧ Applications will be accepted by phone or fax between Nov. 1 and 5. 10 groups will be selected at random by a drawing of names.
- ◆ **Make a Crane-shaped Ornament with *Mizuhiki* (red-and-white string)** / Fri., Dec. 4 / 10:00am - noon / For 18 years old and up / Fee: ¥500  
 ✧ Applications will be accepted by phone or fax between Nov. 1 and Nov. 5. 20 people will be selected at random by a drawing of names.

## 🎬 **Hiroshima City Cinematographic and Audio-Visual Library**

(3-1 Moto-machi, Naka-ku 730-0011 / 223-3525 / 10:00am - 8:00pm (Tue.-Sat.), 10:00am - 5:00pm (Sun., national holidays & August 6) / Closed on Mondays (except Oct. 10) & Oct. 11 / **35mm Film Showings** ⇒ Adults-¥510, Seniors & High school students-¥250, Junior high school students or younger-Free; **Other Film Showings** ⇒ Adults-¥380, Seniors & High school students -¥180, Junior high school students or younger -Free, Admission free for foreign students (Please show your student ID or the Hiroshima International Center Complimentary Pass.) / <http://www.cf.city.hiroshima.jp/eizou/>)

Please feel free to contact the International Exchange Lounge at 082-247-9715.

E-mail: [golounge@pcf.city.hiroshima.jp](mailto:golounge@pcf.city.hiroshima.jp)

October 2016

# 🎬 October Special Showings of Masterpieces of Japanese Film ❶: Yasunari Kawabata and Films (Screened in Japanese only)

- ★ Yasunari Kawabata (1899 - 1972) is a Japanese novelist, who won a Nobel Prize for Literature in 1968.

## 👤 Admission Fee:

Adults-¥510, Seniors (65 years old and up) & High school students-¥250, Junior high & Elementary school students-Free

- ★ Sat., Oct. 8: Free admission for high school students

- Sat., Oct. 8 / ① 10:30am ② 2:00pm ③ 6:00pm  
**Maihime / 舞姫** (1951, Toho, 85 min., B&W, 35mm film) / Original writer: Yasunari Kawabata / Director: Mikio Naruse / Cast: Mieko Takamine, So Yamamura, Mariko Okada, Isao Kimura
- Sun., Oct. 9 / ① 10:30am ② 2:00pm  
**Yukiguni / 雪国** (1965, Shochiku (Ofuna), 113 min., color, 35mm film) / Original writer: Yasunari Kawabata / Director: Hideo Oba / Cast: Shima Iwashita, Mariko Kaga, Isao Kimura, Sadako Sawamura
- Mon., Oct. 10 / ① 10:30am ② 2:00pm  
**Senba-zuru / 千羽鶴** (1969, Daiei (Tokyo), 96 min., color, 35mm film) / Original writer: Yasunari Kawabata / Director: Yasuzo Masumura / Cast: Machiko Kyo, Ayako Wakao, Mikijiro Hira, Hideko Azusa
- Fri., Oct. 14 / ① 10:30am ② 2:00pm ③ 6:30pm  
**Izu no odoriko / 伊豆の踊り子** (1963, Nikkatsu, 87 min., color, 35mm film) / Original writer: Yasunari Kawabata / Director: Katsumi Nishikawa / Cast: Hideki Takahashi, Sayuri Yoshinaga, Shiro Osaka, Chieko Naniwa

# 🎬 October Special Showings of Masterpieces of Japanese Film ❷: Documentary Films (Screened in Japanese only)

## 👤 Admission Fee:

Adults-¥510, Seniors (65 years old and up) & High school students-¥250, Junior high & Elementary school students-Free

- ★ Sat., Oct. 15, 22 & 29: Free admission for high school students
- ★ Wed., Oct. 26 & Sat., Oct. 29: Adults-¥380, Seniors (65 years old and up) & \*High school students-¥180, Junior high & Elementary school students-Free
- \*Free admission for high school students on Oct. 29



- Sat., Oct. 15 / ① 10:30am ② 2:00pm ③ 6:00pm  
 ■ 3 films
  - ◆ Tatakau heitai / 戦ふ兵隊 (1939, Toho Bunka Eigabu, 66 min., B&W, 35mm film) / Director & Film editing: Fumio Kamei / Cinematography: Shigeru Miki / Sound recordist: Shinichi Fujii / Music: Yuji Koseki
  - ◆ Aru hi no higata / 或日の干潟 (1940, Riken Kagaku Eiga, 18 min., B&W, 35mm film) / Director: Kenji Shimomura / Cinematography: Tokio Sano
  - ◆ Shinano fudoki yori Kobayashi Issa / 信濃風土記より 小林一茶 (1941, Toho Bunka Eigabu, 27 min., B&W, 35mm film) / Producer: Fumio Kamei / Cinematography: Shigeru Shirai / Sound recordist: Eizo Sakai / Music: Masao Oki / Commentator: Musei Tokugawa
- Thurs., Oct. 20 / ① 10:30am ② 2:00pm ③ 6:30pm  
**Karakoram / カラコルム** (1956, Nihon Eiga Shinsha, 79 min., color, 35mm film) / Cinematography: Shigeo Hayashida, Seiji Nakamura / Film editing: Chonosuke Ise, Toshiro Nakamura / Music: Toshiro Mayuzumi, Ikuma Dan
- Fri., Oct. 21 / ① 10:30am ② 2:00pm ③ 6:30pm  
**Hikyo Himalaya / 秘境ヒマラヤ** (1960, Yomiuri Eigaisha, 79 min., color, 35mm film) / Cinematography: Sakae Omori / Film editing: Sho Nakamura / Sound recordist: Tetsuya Ohashi / Music: Toshiro Mayuzumi
- Sat., Oct. 22 / ① 10:30am ② 2:00pm ③ 6:00pm  
**Ningen johatsu / 人間蒸発** (1967, ATG, Nihon Eiga Shinsha, Imamura Production, 130 min., B&W, 35mm film) / Director: Shohei Imamura / Cinematography: Kenji Ishiguro / Music: Toshiro Mayuzumi / Cast: Shigeru Tsuyuguchi, Yoshie Hayakawa
- Wed., Oct. 26 / ① 10:30am ② 2:00pm ③ 6:30pm  
**Matsuri no koe / 祭りの声** (1982, Chugoku Hoso, 72 min., color, 16mm film) / Director: Kaneto Shindo / Cinematography: Yoshiyuki Miyake, Kiyomi Kuroda / Music: Hikaru Hayashi / Narrator: Haruko Sugimura
- Thurs., Oct. 27 / ① 10:30am ② 2:00pm ③ 6:00pm  
**Yuki yukite, shingun / ゆきゆきて、神軍** (1987, Shisso Production, 122 min., color, 35mm film) / Cinematography & Director: Kazuo Hara / Associate producer: Shohei Imamura / Producer: Sachiko Kobayashi / Film editing: Jun Nabeshima
- Sat., Oct. 29 / ① 10:30am ② 3:00pm  
**Nippon-koku Furuyashiki-mura / ニッポン国古屋敷村** (1982, Ogawa Production, 210 min., color, 16mm film) / Director: Shinsuke Ogawa / Cinematography: Masaki Tamura / Producer: Hiroo Fuseya / Music: Ichiro Seki

Please feel free to contact the International Exchange Lounge at 082-247-9715.

E-mail: [golounge@pcf.city.hiroshima.jp](mailto:golounge@pcf.city.hiroshima.jp)

October 2016

- Sun., Oct. 30 / ① 10:30am ② 2:00pm  
Zenshin shosetsuka / 全身小説家 (1994, Shisso Production, 137 min., color, 35mm film) / Director & Cinematography: Kazuo Hara / Producer: Sachiko Kobayashi / Film editing: Jun Nabeshima / Music: Takashi Sekiguchi

### ■ Korea Week in Hiroshima (Screened in original language with Japanese subtitles)

👏 Free Admission

- Sat., Oct. 1 / ① 2:00pm ② 6:00pm  
해가 서쪽에서 뜬다면 / If the Sun Rises in the West (1998, South Korea, 100 min., color) / Director: Eun Lee / Cast: Chang Jung Lim, So-young Ko, Seung-won Cha
- Sun., Oct. 2 / ① 10:30am ② 2:00pm  
Ai no mokushiroku - Yun Hakucha no shogai - / 愛の黙示録 一尹鶴子の生涯一 (1997, South Korea, Japan, 102 min., color) / Director: Soo-yong Kim / Cast: Eri Ishida, Yong-u Kim, Keum-yong Kim
- Wed., Oct. 5 / ① 2:00pm ② 6:30pm  
해피엔드 / Happy End (1999, South Korea, 100 min., color) / Director: Ji-woo Jung / Cast: Do-yeon Jeon, Min-sik Choi, Jin-mo Ju
- Thurs., Oct. 6 / ① 2:00pm ② 6:30pm  
접속 / The Contact (1997, South Korea, 106 min., color) / Director: Yun-hyeon Jang / Cast: Suk-kyu Han, Do-yeon Jeon, Yong-soo Park
- Fri., Oct. 7 / ① 2:00pm ② 6:30pm  
조용한 가족 / The Quiet Family (1998, South Korea, 101 min., color) / Director: Jee-woon Kim / Cast: In-hwan Park, Yun-seong Lee, Ho-kyung Go, Kang-ho Song

### ■ Family Theater (Screened in Japanese only)

- 👏 Admission Fee:  
Adults-¥380, Seniors (65 years old and up) & High school students-¥180, Junior high & Elementary school students-Free
- Sun., Oct. 23 / ① 10:30am ② 2:00pm  
Thomas & Friends: Calling All Engines! / きかんしゃトーマス みんなあつまれ! しゅっぱつしんこう (2005, UK, 61 min., color, Blu-ray, Dubbed in Japanese) / Director: Steve Asquith / Narrator: John Kabira / Voice actor: Kumiko Higa, Chie Koujira, Rokuro Naya

### ■ "Sound and Silent"

- ★ Enjoy a silent film with music.  
(Piano: Ayaka Yoshikiyo)

### 👏 Admission Fee:

Adults-¥380, Seniors (65 years old and older) & High school students-¥180, Junior high & Elementary school students-Free

- Sun., Oct. 16 / 2:00pm

Girl Shy (1924, USA, 80 min., B&W, silent) / Director: Fred C. Newmeyer, Sam Taylor / Cast: Harold Lloyd, Jobyna Ralston, Richard Daniels, Carlton Griffin

### ■ Culture Film Screening (Screened in Japanese only)

### 👏 Admission Fee:

Adults-¥380, Seniors (65 years old and older) & High school students-¥180, Junior high & Elementary school students-Free

- Wed., Oct. 12 / ① 2:00pm ② 6:00pm

Thurs., Oct. 13 / ① 10:30am ② 2:00pm  
4 films, 81 min.

- ① Shotoku Taishi to Horyu-ji / 聖徳太子と法隆寺
- ② Kentoshi-sen - Kento-shi no hitobito - / 遣唐使船 一遣唐使の人々
- ③ Daibutsu wo tsukuru - Nara jidai - / 大仏をつくる 一奈良時代一
- ④ Taiak no kaishin / 大化の改新

- Wed., Oct. 19 / ① 2:00pm ② 6:00pm

3 films, 82 min.

- ① Shomu Tenno / 聖武天皇
- ② Kiyomori kara Yoritomo e / 清盛から頼朝へ
- ③ Iyo suigun / 伊予水軍

### ■ International Animation Day 2016 in Hiroshima

◆ Screened in original language

DATE: Fri., Oct. 28

TIME: ① 2:00pm ② 6:00pm

ADMISSION FEE: Free

- ☺ Prize-winning films of Hiroshima International Animation Festival will be screened.



Please feel free to contact the International Exchange Lounge at 082-247-9715.

E-mail: [golounge@pcf.city.hiroshima.jp](mailto:golounge@pcf.city.hiroshima.jp)

October 2016

# Library News

October 2016

## Recommended Books for This Month

### Dear Life

By Alice Munro (Vintage Books, 2013)

### Wonder

By R. J. Palacio (Corgi, 2013)

### The Light Between Oceans

By M. L. Stedman (Scribner, 2013)

### Sammy Keyes and the Hotel Thief

By Wendelin Van Draanen (Yearling, 1998)

### Sammy Keyes and the Skeleton Man

By Wendelin Van Draanen (Yearling, 1999)

What other books should we add to our collection? Your suggestions are always welcome!



## Library Corner

**LOCATION:** International Conference Center Hiroshima (ICCH), 1<sup>st</sup> Floor

**T E L L :** (082)247-9715

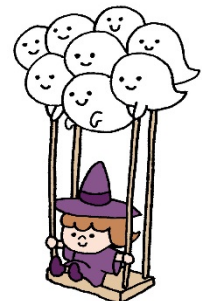
**H O U R S :** 9:00 am - 7:00 pm (From April 1 to September 30)

9:00 am - 6:00 pm (From October 1 to March 31)

**C L O S E D :** December 29<sup>th</sup> through January 3<sup>rd</sup>

### **BOOK LOAN POLICY:**

Up to three books may be borrowed for a two-week period. To obtain an ICCH Library Card, you need to bring identification which has your address, and for foreign residents, your period of stay in Japan. (A Japanese driver's license, student identification card, passport or resident card is an acceptable form of identification.)



Please feel free to contact the International Exchange Lounge at 082-247-9715.

E-mail: [golounge@pcf.city.hiroshima.jp](mailto:golounge@pcf.city.hiroshima.jp)

October 2016

# 図書だより

2016年10月

今月のおすすめ図書

## ハロウィーンってなあに？

クリステル・デモワノー／著，中島 さおり／訳（主婦の友社，2006年）

## NHK E テレ えいごであそぼ えほん: Cheese! Meet the Bells:

パパ、おはよう Good Morning, Dad

トム・スレモンズ，ポール・バート，佐藤 久美子／作，大塚 いちお／絵  
（ディスカヴァー・トゥエンティワン，2013年）

## 英語で日本文化の本: The Japan Culture Book

三浦 史子／著，アラン・グリーソン／訳（ジャパンタイムズ，2015年）

## ヘンリーおじさんのぜったい通じるおしゃべり英語:

文法不要！聞くだけで英語が身につく魔法の CD ブック

ヘンリー・ドレナン／著（情報センター出版局，2008年）

## 不法愛妻家

デビット・ゾペティ／著（新潮社，2012年）

本のリクエストなど図書コーナーに関するご要望はスタッフまでお気軽にお申し出ください。



## 図書コーナー

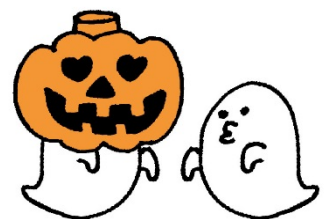
場 所: 広島国際会議場 1 F ・ 国際交 流 ラウンジ（平和記念公園内）  
TEL (082)247-9715

開館時間: 9:00am - 7:00pm (4月1日から 9月30日まで)  
9:00am - 6:00pm (10月1日から 3月31日まで)

休 館 日: 12月29日～1月3日

貸 出: 図書は 2週間 を期限として、1回3冊まで借りることができます。

初めて利用する際には、住所や在留期間（外国人の方）を証明するもの（運転免許証・学生証・パスポート・在留カードなど）を提示して下さい。



Please feel free to contact the International Exchange Lounge at 082-247-9715.

E-mail: [golounge@pcf.city.hiroshima.jp](mailto:golounge@pcf.city.hiroshima.jp)

October 2016



# Trio-Phone Service

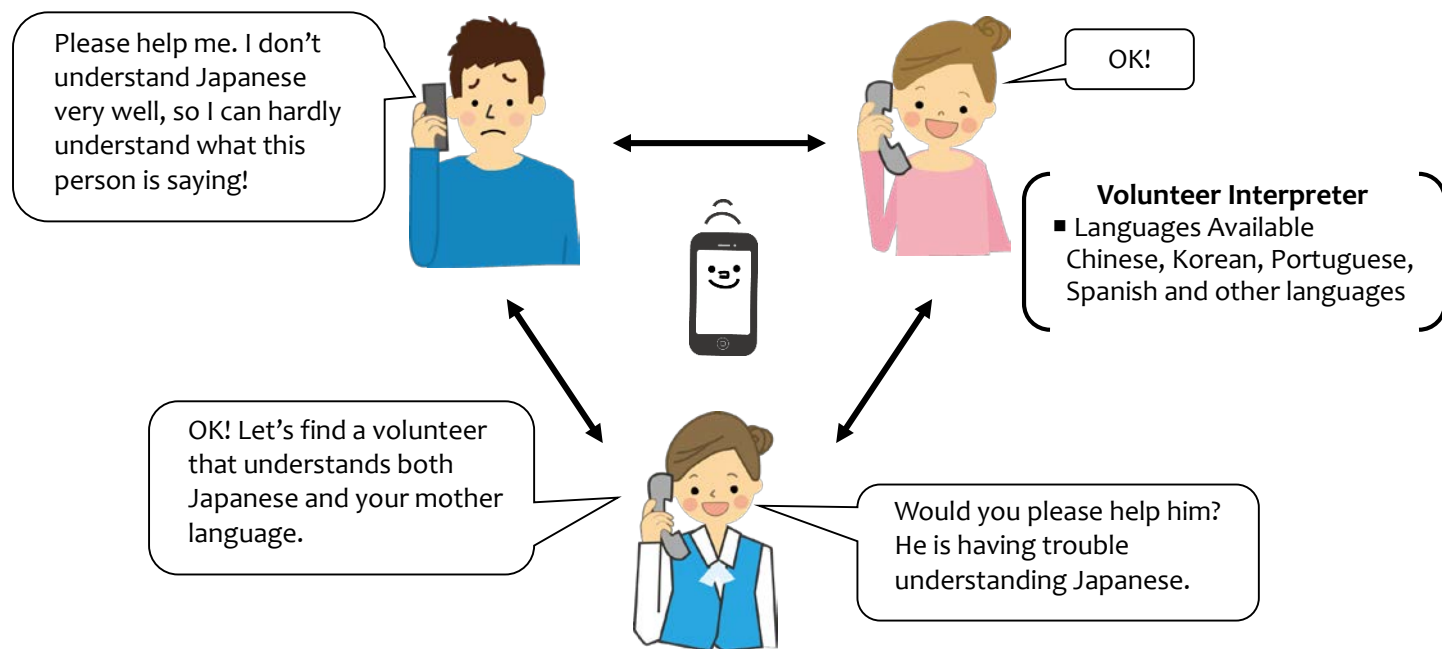
## (Multilingual Interpretation over the Telephone)



### What is Trio-Phone ?

Trio-Phone Service allows three people to have a conversation at the same time through the telephone. If you are having difficulties communicating in Japanese, call the International Exchange Lounge (082-247-9715).

A volunteer interpreter will help you through the Trio-Phone Service!



**International Exchange Lounge (Available in English)**

**TEL: 082-247-9715**

**OPEN: 9:00am – 7:00pm (April 1 – September 30)**

**9:00am – 6:00pm (October 1 – March 31)**

**CLOSED: December 29 through January 3**

**[For more information]**

**Hiroshima Peace Culture Foundation**

*International Exchange Lounge*

TEL: 082-247-9715 FAX: 082-242-7452 E-mail: [golounge@pcf.city.hiroshima.jp](mailto:golounge@pcf.city.hiroshima.jp)

*International Relations & Cooperation Division*

TEL: 082-242-8879 FAX: 082-242-7452 E-mail: [internat@pcf.city.hiroshima.jp](mailto:internat@pcf.city.hiroshima.jp)

HP: <http://www.pcf.city.hiroshima.jp/ircd>

Please feel free to contact the International Exchange Lounge at 082-247-9715.

E-mail: [golounge@pcf.city.hiroshima.jp](mailto:golounge@pcf.city.hiroshima.jp)

September 2016

# トリオフォンサービスを利用できます



## トリオフォン（電話による多言語ボランティア通訳）とは？

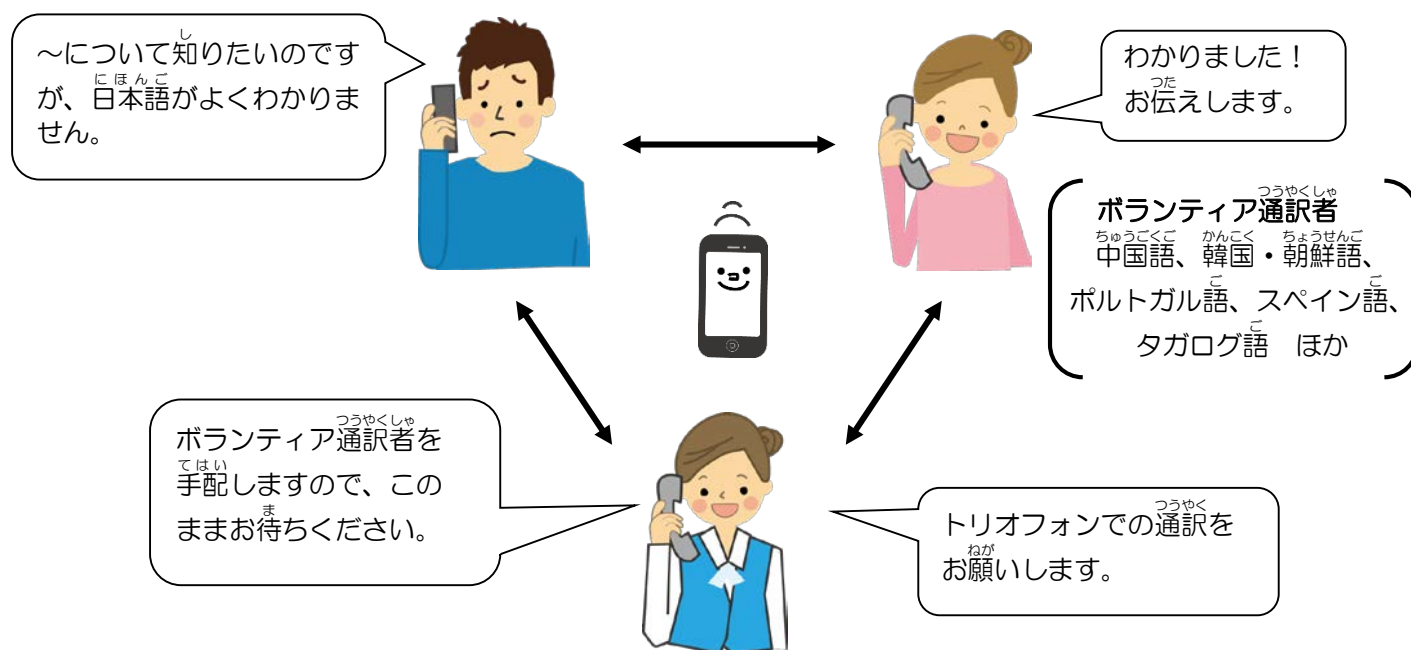
「トリオフォン」とは、3人同時に電話で会話ができるシステムです。

日本語に自信がない外国人市民のみなさん！

国際交流ラウンジに電話をすれば、ボランティア通訳者を通じて、

母国語で知りたいことがわかるという便利なサービスです。

ぜひご利用ください。



国際交流ラウンジ（英語でもお話しできます）

TEL：082-247-9715

開館時間：9:00～19:00（4月1日～9月30日）

9:00～18:00（10月1日～3月31日）

休館日：12月29日～1月3日

### 【問い合わせ】

（公財）広島平和文化センター

〒730-0811 広島市中区中島町1-5（広島国際会議場内）

国際交流ラウンジ

TEL：082-247-9715 FAX：082-242-7452 Eメール：golounge@pcf.city.hiroshima.jp

国際部 国際交流・協力課

TEL：082-242-8879 FAX：082-242-7452 Eメール：internat@pcf.city.hiroshima.jp

HP: <http://www.pcf.city.hiroshima.jp/ircd/>

Please feel free to contact the International Exchange Lounge at 082-247-9715.

E-mail: [golounge@pcf.city.hiroshima.jp](mailto:golounge@pcf.city.hiroshima.jp)

September 2016

# 使用済み切手、テレホンカード、ペットボトルのキャップで「小さな国際協力」 Assisting with International Cooperation with Used Stamps, Telephone Cards & PET Bottle Caps

The International Exchange Lounge collects used stamps and telephone cards to assist international cooperation activities. Through the two volunteer groups, JOCS and ShaplaNeer, the collected stamps and cards are sold to collectors to raise money. With the profit, items such as milk and medicine are purchased and doctors as well as nurses are dispatched throughout Asia and other continents. We also collect PET bottle caps in order to support the “Ecocap Action”. The sales profits obtained by recycling caps are donated to the Japan Committee “Vaccines for the World’s Children” (JCV).

\*JOCS: Japan Overseas Christian Medical Cooperative Service

\*ShaplaNeer = Citizens’ Committee in Japan for Overseas Support

国際交流ラウンジでは国際協力に役立てるため、使用済み切手、テレホンカード、ペットボトルのキャップを収集しています。収集した切手とテレホンカードは、それぞれ公益社団法人日本キリスト教海外医療協力会 (JOCS)、特定非営利活動法人シャプラニール＝市民による海外協力の会へ郵送し、最終的に収集家によって購入されます。この収益金により、例えばアジア地域に医師や看護師を派遣することができます。収集したペットボトルのキャップは、キャップの再資源化で得た売上金を認定NPO法人「世界の子どもにワクチンを」日本委員会 (JCV) へ寄付し、発展途上国の子どもたちにワクチンを届けるというエコキャップ活動に役立てられます。

## HOW TO COLLECT:

- ☐ **Stamps** ⇒ When you cut stamps from envelopes, please leave 5mm of paper around them. It is not necessary to remove them from the envelope. Torn or folded stamps cannot be accepted.
- ☐ **Telephone Cards** ⇒ Please note that cards which are folded or stained cannot be accepted.
- ☐ **PET Bottle Caps** ⇒ Only PET bottle caps for drinks or mineral water are accepted. Please wash the caps and tear off the sticker if it has one. This is in order to avoid damaging the recycling machines. Things such as metal caps and pull-top tabs cannot be accepted.

## 収集方法:

- ☐ **切手** ⇒ 封筒に貼ってある切手を、周囲約5ミリの余白を残してカットしてください。切手を封筒からはがす必要はありません。破れや折れなどの傷のある切手は収集の対象にはなりません。
- ☐ **テレホンカード** ⇒ テレホンカードのみ収集しています。ただし、汚れや折れなどのあるカードは除外されます。
- ☐ **ペットボトルのキャップ** ⇒ 清涼飲料水とミネラルウォーター用ペットボトルのキャップが収集対象です。収集にあたっては機械の故障を防止するため、キャップを洗い、またシールなどがあればはがしてください。金属製の蓋やプルトップなどは収集対象外です。

For further information, please ask the staff at the International Exchange Lounge.

詳しい情報につきましては国際交流ラウンジカウンターまでお問い合わせください。



International Exchange Lounge / 国際交流ラウンジ

Tel. 082-247-9715 Fax. 082-242-7452

E-mail: [golounge@pcf.city.hiroshima.jp](mailto:golounge@pcf.city.hiroshima.jp)



Please feel free to contact the International Exchange Lounge at 082-247-9715.

E-mail: [golounge@pcf.city.hiroshima.jp](mailto:golounge@pcf.city.hiroshima.jp)

September 2016

# Garbage Disposal Information

Separate garbage properly and take it to the collection site by 8:30am on the designated day. Please do NOT take garbage to the site on the night before. Garbage collection days vary depending on where you live and the category of the refuse. For further details, consult your local ward office or your neighbors to be sure of the proper disposal method. "Hiroshima 8", a handbook on how to separate garbage, and "Hiroshima City Garbage Disposal Guidelines for the 2016 fiscal year", a garbage chart with schedules of garbage collection days, are available at ward offices, branch offices and community halls. The Handbook and Guidelines are translated into English, Spanish, Portuguese, Chinese and Korean. These are also available at the International Exchange Lounge (International Conference Center Hiroshima), so please ask the staff if you need them.

## ごみの正しい出しかた

ごみは種類ごとに分けて、決められた日の朝8時半までに、決められた場所へ整理して出してください。ただし、収集日の前夜には出さないでください。ごみを出す曜日や日は、あなたの住んでいる町とごみの種類によって決められています。詳しいことはお住まいの地域の区役所や近所の人に尋ねて、正しいごみの出しかたを確認しましょう。各区役所・出張所、公民館において、ごみの正しい出しかたについて書かれたハンドブックやごみの収集日の表（英語、スペイン語、ポルトガル語、中国語、ハングル語）を配布しています。また、国際交流ラウンジでも配布していますので、ご希望の方はスタッフまで申し出てください。

### We have charts for;

- |                   |                       |
|-------------------|-----------------------|
| ★ Naka-ku / 中区    | ★ Asaminami-ku / 安佐南区 |
| ★ Higashi-ku / 東区 | ★ Asakita-ku / 安佐北区   |
| ★ Nishi-ku / 西区   | ★ Aki-ku / 安芸区        |
| ★ Minami-ku / 南区  | ★ Saeki-ku / 佐伯区      |



Please feel free to contact the International Exchange Lounge at 082-247-9715.

E-mail: [golounge@pcf.city.hiroshima.jp](mailto:golounge@pcf.city.hiroshima.jp)

September 2016



# Japanese Language Classes in Hiroshima City

These are Japanese language classes held at community halls, and other public facilities in Hiroshima City. The lessons are free for the most part; however, some classes may charge a fee for materials. Some classes require you to observe the lesson in advance. There is also the possibility that the information mentioned below has changed. Please inquire at the relevant class for further information before you attend the lesson.

As of April 2016

## ■ Naka Ward

### #1 Hiroshima Japanese Language Class

**PLACE:** ① Hiroshima Kokusai Kaigi-jo, 3F Kenshu-shitsu (1-5 Nakajima-cho, Naka-ku)  
② Hiroshima Kokusai Center (Hiroshima International Center)  
(Crystal Plaza 6F, 8-18 Naka-machi, Naka-ku)

**DATE & TIME:**

- ① Every Wednesday, 6:30pm – 8:00pm
- ① ② Every Saturday, 10:00am – noon

**TUITION:** Free

**ENROLLMENT:** Enroll any time you please

**INQUIRIES:** Hiroshima Japanese Language Class

Tel. 090-1339-1454

Email: [Hiroshima.nihongo@gmail.com](mailto:Hiroshima.nihongo@gmail.com)

**ACCESS:**

**Hiroshima Kokusai Kaigi-jo**

⇒ Located in Peace Memorial Park

- ① Take bus No.24 bound for Yoshijima Eigyocho (吉島営業所) and get off at Heiwa Kinen Koen (平和記念公園). It is a 3 min. walk from there.

- ② It is a 5 min. walk from the Gembaku Dome-mae (原爆ドーム前) Streetcar Stop.

**Hiroshima Kokusai Center**

(Hiroshima International Center)

- ⇒ It is a 5 min. walk from the Fukuro-machi (袋町) Streetcar Stop. Near the ANA Crowne Plaza Hotel Hiroshima

**URL:** <http://hiroshimakyoishitsu.wix.com/nihongo>

Hiroshima Nihongo Kyoshitsu

**Facebook:** ひろしま日本語教室 [Hiroshima Japanese Class](https://www.facebook.com/HiroshimaJapaneseClass)

### #2 Japanese Language Class Peace

**PLACE:** Hiroshima YMCA (7-11 Hatchobori, Naka-ku)

**DATE & TIME:** Every Saturday, 1:00pm – 3:00pm

**TUITION:** Free

**ENROLLMENT:** Enroll any time you please

**INQUIRIES:** Japanese Language Class Peace

Email: [ninjapanese.peace@gmail.com](mailto:ninjapanese.peace@gmail.com)

**ACCESS:** Hiroshima YMCA

- ① From Hiroshima Train Station (south exit), take any streetcar other than number 5 to Tatemachi (立町) stop. It is a 3 minute walk from there.
- ② From Hiroshima Bus Center, it is a 5 minute walk.

### #3 Nihongo Gakushu Kai

**PLACE:** Hiroshima-shi Shakai Fukushi Center  
(1-9-43 Senda-machi, Naka-ku)

**DATE & TIME:** Every Thursday, 10:00 am – noon

**TUITION:** 100yen/month

**ENROLLMENT:** Enroll any time you please

**INQUIRIES:** Hiroshima-shi Shakai Fukushi Center  
Tel. 082-243-0051

**ACCESS:** It is a 10 min. walk from the Takanobashi (鷹野橋) Streetcar Stop.

### #4 Japanese Language Class Kogusa

**PLACE:** Takeya Komin-kan

(3-15 Takara-machi, Naka-ku)

**DATE & TIME:** Every Wednesday, 1:00 pm – 4:00 pm

**TUITION:** 100yen/month

**ENROLLMENT:** Enroll any time you please

**INQUIRIES:** Takeya Komin-kan Tel. 082-241-8003

**ACCESS:** Take a bus bound for Daigaku Byoin (大学病院) and get off at Takeya-cho (竹屋町). It is a 5 min. walk from there, near the Fuji Grand supermarket.

### #5 Japanese Study Class for Returnees from China Chugoku Kikokusha no Kai

**PLACE:** Chuo Komin-kan

(24-36 Nishi-hakushima-cho, Naka-ku)

**DATE & TIME:** Every Monday, Wednesday and Saturday,  
10:00 am – noon

**INQUIRIES:** Chuo Komin-kan Tel. 082-221-5943

**ACCESS:** Located near Moto-machi High School

- ① Take a bus bound for Yokogawa (横川) or Daigaku Byoin (大学病院) and get off at Nishi-hakushima (西白島). It is a 5 min. walk from there.
- ② It is a 5 min. walk from the Johoku (城北) Station (Astramline).





#6 HarukazeJapanese Volunteer Group

**PLACE:** International Exchange Lounge (Hiroshima Kokusai Kaigi-jo, 1F) or schools that students are attending

**DATE & TIME:** Every Saturday, 10:00 am – noon at the International Exchange Lounge

**TUITION:** Free

**INQUIRIES:** Tel. 082-277-8330 (Sato)

Email: [harukaze@feel.ocn.ne.jp](mailto:harukaze@feel.ocn.ne.jp)

**ACCESS:** International Exchange Lounge

① Take bus No.24 bound for Yoshijima Eigyocho (吉島営業所) and get off at Heiwa Kinen Koen (平和記念公園). It is a 3 min. walk from there.

② It is a 5 min. walk from the Gembaku Dome-mae (原爆ドーム前) Streetcar Stop.

■ **Minami Ward**#7 WednesdayJapanese Language Club

**PLACE:** Ryugakusei Kaikan  
Hiroshima City International House  
(1-1 Nishi-Kojin-machi, Minami-ku)

**DATE & TIME:** Every Wednesday, 10:00 am - noon

**TUITION:** Free

**ENROLLMENT:** Enroll any time you please

**INQUIRIES:** Ryugakusei Kaikan Tel. 082-568-5931

**ACCESS:** It is a 5 min. walk towards east from JR Hiroshima (広島) Station, next to the Ark Hotel.

#8 Minna-no-Nihongo Class

**PLACE:** Ryugaku-sei Kaikan  
Hiroshima City International House  
(1-1 Nishi-Kojin-machi, Minami-ku)

**DATE & TIME:** Every Saturday, 1:30 pm – 3:30 pm

**TUITION:** Free

**ENROLLMENT:** Enroll any time you please

**INQUIRIES:** Ryugaku-sei Kaikan Tel. 082-568-5931

**ACCESS:** It is a 5 min. walk towards east from JR Hiroshima (広島) Station, next to the Ark Hotel.

#9 Fureai Japanese Language Class

**PLACE:** Aosaki Komin-kan  
(1-12-7 Aosaki, Minami-ku)

**DATE & TIME:** Every Saturday, 7:00 pm – 9:00 pm

**TUITION:** Free

**ENROLLMENT:** Enroll any time you please

**INQUIRIES:** Aosaki Komin-kan Tel. 082-281-3802

**ACCESS:** It is a 5 min. walk from the JR Mukainada (向洋) Station (JR Sanyo or JR Kure Line).

■ **Higashi Ward**#10 Ushita Japanese Language Class

**PLACE:** Ushita Komin-kan  
(1-8-3 Ushita-shin-machi, Higashi-ku)

**DATE & TIME:** Every Wednesday, 1:30 pm – 3:30 pm  
Classes will be closed during summer holiday season (late July to the end of August), New Year's holiday season and on closed days of Ushita Komin-kan.

**TUITION:** Free

**ENROLLMENT:** Enroll any time you please

**INQUIRIES:** Ushita Komin-kan Tel. 082-227-0706

**ACCESS:** Get off at Ushita (牛田) Station (Astramline). It is a 5 min. walk from there. It is located next to the Higashi Ward Sports Center.

■ **Nishi Ward**#11 Minami-kanon Japanese Language Volunteer Group

**PLACE:** Minami-kanon Komin-kan  
(2-16-46 Kanon-shin-machi, Nishi-ku)

**DATE & TIME:** Every Saturday, 6:00 pm – 9:00 pm

**TUITION:** Free

**ENROLLMENT:** Enroll any time you please

**INQUIRIES:** Minami-kanon Komin-kan  
Tel. 082-293-1220

**ACCESS:** Take the No. 3 bus bound for Hiroshima Heliport or Marina Hop and get off at Kanon-shin-machi 3 cho-me (観音新町 3 丁目) Stop. It is a 5 min. walk from there.

#12 Japanese Language Class Momiji

**PLACE:** Furuta Komin-kan  
(19-15 Furue-nishi-machi, Nishi-ku)

**DATE & TIME:** Every Friday, 10:00 am – noon

**TUITION:** 100yen/month

**ENROLLMENT:** Enroll any time you please

**INQUIRIES:** Furuta Komin-kan Tel. 082-272-9001

**ACCESS:** It is a 5 min. walk from the Furue (古江) Streetcar Stop (Miyajima Line).

#13 IVC: Kokusai Volunteer Club ~ Nihongo

**PLACE:** Kusatsu Komin-kan  
(2-20-7 Kusatsu-higashi, Nishi-ku)

**DATE & TIME:** Every Wednesday, 10:00 am – 12:30 pm  
Every Saturday, 1:30 pm – 3:30 pm

**TUITION:** Free

**ENROLLMENT:** Enroll any time you please

**INQUIRIES:** Kusatsu Komin-kan Tel. 082-271-2576

**ACCESS:** It is a 2 min. walk from the Kusatsu (草津) Streetcar Stop (Hiroden Miyajima Line).

## ■ Asaminami Ward

### #14 Gion Japanese Language Class

**PLACE:** Gion Komin-kan

(1-13-26 Nishihara, Asaminami-ku)

**DATE & TIME:** Every Friday, 10:30 am – 1:00 pm  
Lesson schedule may change during school holiday seasons.

**TUITION:** Free

**ENROLLMENT:** Enroll any time you please

**INQUIRIES:** Gion Komin-kan Tel. 082-874-5181

**ACCESS:**

- ① It is a 5 min. walk from the JR Shimo-gion (下祇園) Station (JR Kabe Line).
- ② It is a 15 min. walk from the Gion Shin-bashi-kita (祇園新橋北) Station (Astramline).
- ③ It is a 5 min. walk from the NHK Housousyo-mae bus stop.

◆ Child-care service is available during the class. (Prior reservation is required.)

### #15 Yasu-higashi Japanese Language Class

**PLACE:** Yasu-higashi Komin-kan

(2-16-42 Yasu-higashi, Asaminami-ku)

**DATE & TIME:** Every Friday, 6:00 pm – 7:30 pm  
Because classes are held on a semester system, there are times when classes will not be held.

**TUITION:** Free

**ENROLLMENT:** Enroll whenever you please (during the term only)  
Inquire at the Yasu-higashi Komin-kan for more information including the term schedule.

**INQUIRIES:** Yasu-higashi Komin-kan  
Tel. 082-878-7683

**ACCESS:** It is a 5 min. walk from Yasu-higashi (安東) Station (Astramline).

### #16 Sato Japanese Language Class

**PLACE:** Sato Komin-kan (6-29-25 Midorii, Asaminami-ku)

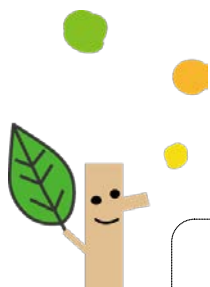
**DATE & TIME:** Every Wednesday, 9:30 am – 12:30 pm

**TUITION:** Free

**ENROLLMENT:** Enroll any time you please

**INQUIRIES:** Sato Komin-kan Tel. 082-877-5200

**ACCESS:** It is a 3 min. walk from the Shichiken-jaya (七軒茶屋) Station (JR Kabe Line).



### #17 Numata Japanese Language Class

**PLACE:** Numata Komin-kan

(5697 Tomo, Numata-cho, Asaminami-ku)

**DATE & TIME:** Every Saturday, 1:00 pm – 4:00 pm

**TUITION:** Free

**ENROLLMENT:** Enroll any time you please  
A lesson observation is required in advance. Inquire at the Numata Komin-kan.

**INQUIRIES:** Numata Komin-kan Tel. 082-848-0242

**ACCESS:**

- ① It is a 5 min. walk from the Obara (大原) Station (Astramline).
- ② At JR Hiroshima Station (south exit), take a bus bound for Ichiritsu Daigaku (市立大学) via Kokudo 54 and get off at Mitsubishi-danchi-iriguchi (三菱団地入口) (a 1 hour bus ride). It is a 8 min. walk from there.
- ③ At the Hiroshima Bus Center (Hiroshima Sogo Department Store, 3F), take a bus bound for Kusunoki-dai (くすの木台) via Kosoku 4-go-sen and get off at Obara Eki (大原駅) (a 30 min. bus ride). It is a 5 min. walk from there.

## ■ Asakita Ward

### #18 Magame Japanese Language Class

**PLACE:** Magame Komin-kan

(1-3-27 Magame, Asakita-ku)

**DATE & TIME:** Every Sunday, 10:00 am – noon  
Classes will be closed during New Year's holiday season.

**TUITION:** Free

**ENROLLMENT:** Enroll any time you please

**INQUIRIES:** Magame Komin-kan Tel. 082-842-8223

**ACCESS:** Take a bus bound for Obayashi Shako (大林車庫) via Koyo A Danchi (高陽A団地) and get off at Terasako Koen (寺迫公園). It is a 1 min. walk from there.

### #19 Kameyama

#### Japanese Language Class Amigo

**PLACE:** Kameyama Komin-kan

(3-16-16 Kameyama-minami, Asakita-ku)

**DATE & TIME:** Every Sunday, 10:00 am – 12:30 pm

**TUITION:** Free

**ENROLLMENT:** Enroll any time you please

**INQUIRIES:** Kameyama Komin-kan  
Tel. 082-815-1830

**ACCESS:** Take a bus bound for Katsuki (勝木) via Nijiyama Danchi (虹山団地) and get off at Nijiyama Danchi-shita (虹山団地下). It is a 5 min. walk from there.

## ■ Aki Ward

### #20 Nihongo Club

**PLACE:** Funakoshi Komin-kan

(5-22-23 Funakoshi, Aki-ku)

**DATE & TIME:** Every Saturday, 10:00 am – noon

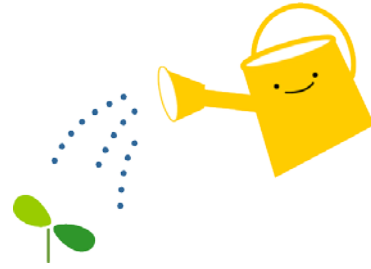
**TUITION:** Free

**ENROLLMENT:** Enroll any time you please

**INQUIRIES:** Funakoshi Komin-kan

Tel. 082-823-4261

**ACCESS:** It is a 7 min. walk from the JR Kaita-ichi (海田市)  
Station (JR Sanyo Line).



### ***INQUIRY: Hiroshima Peace Culture Foundation***

#### ***International Exchange Lounge***

*1-5 Nakajima-cho, Naka-ku, Hiroshima  
730-0811*

*E-mail: [golounge@pcf.city.hiroshima.jp](mailto:golounge@pcf.city.hiroshima.jp)*

*Tel. 082-247-9715 Fax. 082-242-7452*

*✦ Visit our website for information online. ✦*

*URL: <http://www.pcf.city.hiroshima.jp/ircd/Japanese/index.html>*



HIRO CLUB NEWS is published monthly and provides essential and entertaining information about life in Hiroshima City. It is available in print at the International Exchange Lounge, and online at our website:

<http://www.pcf.city.hiroshima.jp/ircd/joho/hiroclub%2001.html>

Selected information is also available in other languages including Chinese, Portuguese, Spanish and Korean.

HIRO CLUB NEWSは広島の生活情報やイベント等の情報を掲載している英語の月刊情報誌です。国際交流ラウンジにて配布しています。当課ホームページにも掲載しています。英語版の情報の一部を抜粋した中国語・ポルトガル語・スペイン語・ハングル版も作成しています。



Edited and published by the Hiroshima Peace Culture Foundation

International Affairs Department, International Relations and Cooperation Division

Tel: (082) 242-8879, Fax: (082) 242-7452, E-mail: [internat@pcf.city.hiroshima.jp](mailto:internat@pcf.city.hiroshima.jp)

International Exchange Lounge

Tel: (082) 247-9715, E-mail: [golounge@pcf.city.hiroshima.jp](mailto:golounge@pcf.city.hiroshima.jp)

Website: <http://www.pcf.city.hiroshima.jp/ircd/english/index.html>

編集・発行 公益財団法人広島平和文化センター国際部国際交流・協力課

〒730-0811 広島市中区中島町1番5号