



## おせち料理 *Osechi-ryōri*

Various special food items are served at the New Year, both for the family and guests. The traditional mixture of various symbolic seafood, meat, vegetable and pickled dishes is called osechi-ryōri. Osechi-ryōri is ideally served in three or four-tiered lacquered wooden boxes called jūbako.

The ingredients and serving style of osechi-ryōri vary from family to family and in different parts of Japan, as well as the budget available. There's a long list of regular items, all with some kind of symbolic meaning. Here are some examples of what ingredients of osechi-ryōri symbolize:

*Kuro-mamé* (black beans): *kuro-mamé* suggest another word pronounced "*mamé*" that means 'staying healthy'.

*Kazunoko* (herring roe): it represents hope for many children

*Tazukuri* (sardines preserved with a sweet-salty taste): It represents a good harvest, because small fish were used as a high-quality fertilizer in the Edo period (A.D. 1603-1686).

*Kuri-kinton* (*kuri* chestnuts mixed with a puree of *satsuma-imo* sweet potatoes): *kuri-kinton's* gold color suggests wealth and hope for a prosperous year.

*Kobu-maki* (kelp rolled around fish meat and boiled): it hints at the word *yorokobu* (happiness)

Tai (sea bream): It suggests an *omédetai* (auspicious event).

(Abstracted from 『ニッポン風物詩』, pp. 256-261, IBC パブリッシング)

Winter 2016-2017

*Merry Christmas!*

# Winter 2016-2017

- ★ *City Office Notices*
- ★ *Hiroshima Peace Culture Foundation News*
- ★ *Movie Theaters*
- ★ *Bilingual TV Programs*
- ★ *Concerts & Plays*
- ★ *Museums*
- ★ *Sports*
  - *Hiroshima Dragonflies 2016 – 2017 B2 League*
- ★ *Events*
  - *Seasonal Event Information*
  - *Municipal Facilities*
- ★ *Lounge & Library*
  - *Library News*
  - *Trio-phone Service*  
(multilingual interpretation over the telephone)
  - *Assisting with International Cooperation*
  - *Garbage Disposal*
- ★ *Japanese Language Classes in Hiroshima City*

***Hiroshima Peace Culture Foundation  
International Exchange Lounge***

*1-5 Nakajima-cho, Naka-ku, Hiroshima 730-0811*

*E-mail: [golounge@pcf.city.hiroshima.jp](mailto:golounge@pcf.city.hiroshima.jp)*

*Tel. 082-247-9715 Fax. 082-242-7452*

★ *Visit the HIRO CLUB NEWS WEBSITE for information online.* ★

*URL: <http://www.pcf.city.hiroshima.jp/ircd/ihoh/hiroclub%2001.html>*

*May your Christmas wishes come true!*



*With best wishes for Merry Christmas.*

# City Office Notices

City Office Notices contains selected information from the Hiroshima City Newsletter, *ひろしま市民と市政 Hiroshima Shimin to Shisei*. City Office Notices is published twice a month and available in print at the International Exchange Lounge, and online at our website:  
<http://www.pcf.city.hiroshima.jp/ircd/joho/hiroclub%2001.html>

December 1, 2016

## Topics

- ✧ Quick HIV Test Available
- ✧ After-School Childcare “Houkago Jidou Club (放課後児童クラブ)”  
Application for April Enrollment
- ✧ Subsidy for International Exchange/Cooperation Activities
- ✧ Subsidy for Cultural Activities
- ✧ For National Health Insurance holders,  
Financial Support for Large Medical Expenses

## Quick HIV Test Available

臨時エイズ迅速(即日)検査(P5)

**PLACE:** Yunokawa Ladies Clinic (5-14 Shintenchi, Naka-ku)

**DATE:** Saturday, December 3 2:00 pm – 5:30 pm

Also, HIV campaign events will be held in Alice Garden, near PARCO.

**NOTE:** Reservations are NOT required. No charge. Anonymous. For all genders.

**INQUIRIES:** *Hoken Iryo Ka* (Health & Medical Services Division) Tel. 504-2622 Fax. 504-2258

## After-School Childcare “Houkago Jidou Club (放課後児童クラブ)” Application for April Enrollment

来年度の放課後児童クラブの利用申込を受け付けます(P5)

“Houkago Jidou Club (放課後児童クラブ)” is an after-school program for elementary schoolchildren whose guardians' work keeps them away from home until 5 pm.

**APPLICATION:** *Jidoukan* and *Houkago Jidou Club* will accept applications for April enrollment as following schedule:

1<sup>st</sup> to 3<sup>rd</sup> grade: between Tuesday, January 10 and Saturday, January 21

4<sup>th</sup> to 6<sup>th</sup> grade: between Thursday, February 16 and Tuesday, February 28

For more information including conditions and required documents, please search *Houkago Jidou Club* (放課後児童クラブ) on Hiroshima City's official website. If the number of applicants exceeds the number of open spots in after-school facilities, applications will go through a screening process.

**INQUIRIES:** *Houkago Taisaku Ka* (After-school Childcare Division) Tel. 242-2014 Fax. 242-2018

Edited and published by the Hiroshima Peace Culture Foundation  
International Affairs Department, International Relations and Cooperation Division  
Tel: (082) 242-8879, Fax: (082) 242-7452, E-mail: [internat@pcf.city.hiroshima.jp](mailto:internat@pcf.city.hiroshima.jp)  
International Exchange Lounge  
Tel: (082) 247-9715, E-mail: [golounge@pcf.city.hiroshima.jp](mailto:golounge@pcf.city.hiroshima.jp)  
Website: <http://www.pcf.city.hiroshima.jp/ircd/english/index.html>  
編集・発行 公益財団法人広島平和文化センター国際部国際交流・協力課

## Subsidy for International Exchange/Cooperation Activities

国際交流・協力活動へ助成します(P5)

**WHO:** Groups that will hold international exchange/cooperation activities between April and September 2017. An applicant screening will be held. Before applying, please consult the Division.

### SUBSIDY:

| Subsidy for  | Who                                  | Amount   |
|--|--------------------------------------|--|
| 1. Promoting international exchange/cooperation activities | Groups started more than 2 years ago | Activities in Hiroshima City:<br>up to 150,000 yen<br>Activities in other countries:<br>up to 400,000 yen<br>Activities in sister cities:<br>up to 400,000 yen |
| 2. Start-up international exchange/cooperation activities  | Groups started less than 2 years ago | Up to 100,000 yen  |

**APPLICATION:** Submit a prescribed application between Wednesday, January 4 and Friday, February 3 to 広島 平和文化センター国際交流・協力課 (Hiroshima Peace Culture Foundation, International Relations and Cooperation Division). The application forms are available at the division, ward offices, community centers and online at the division's official website <http://www.pcf.city.hiroshima.jp/ircd/>

**BRIEFING MEETING:** An informed meeting will be held on Thursday, December 15, 6:30pm – 7:30 pm at International Conference Center Hiroshima 3F (1-5 Nakajima-cho, Naka-ku)

**INQUIRIES:** Hiroshima Peace Culture Foundation,  
International Relations and Cooperation Division Tel. 242-8879 Fax. 242-7452

## Subsidy for Cultural Activities

文化活動助成事業募集(P5)

**WHO:** Groups or individuals who will hold cultural activities in Hiroshima City between April and September 2017 and will make a public presentation. Applicant screening will be held.

**SUBSIDY AMOUNT:** Half of the activity expenses, up to 200,000 yen

**APPLICATION:** Send a prescribed application form postmarked by Wednesday, December 28 to 文化  
ZaidanJigyoka  
財団 事業課 (The Hiroshima City Cultural Foundation, Project Division). The applications are available at *Bunka Zaidan* and can also be downloaded through Hiroshima City's official website.

**INQUIRIES:** *Bunka Zaidan* (Cultural Foundation) Tel. 244-0750 Fax. 245-0246

For National Health Insurance holders,

## Financial Support for Large Medical Expenses

国民健康保険高額療養費の申請には領収書が必要です(P4)

KokuminKenkoHoken

If you are enrolled in the National Health Insurance Plan (国民 健康 保険 ) and your monthly copayment has exceeded a designated limit, you can apply for Financial Support for High Cost Medical

KogakuRyoyohinoShikyu

Care (高額 療養費 の支給 ). For the application, you are required to submit payment receipts issued by the clinics you visit, so please keep them and do not throw them away. For details, please consult your residential ward office.

**INQUIRIES:** *Hoken Nenkin Ka* (Public Health & Pension Division)

| Ward    | Phone    | Fax      | Ward      | Phone    | Fax      |
|---------|----------|----------|-----------|----------|----------|
| Naka    | 504-2555 | 541-3835 | Asaminami | 831-4929 | 877-2299 |
| Higashi | 568-7711 | 262-6986 | Asakita   | 819-3909 | 815-3906 |
| Minami  | 250-8941 | 252-7179 | Aki       | 821-4910 | 822-8069 |
| Nishi   | 532-0933 | 232-9783 | Saeki     | 943-9712 | 923-5098 |



# Hiroshima Peace Culture Foundation News

Event schedules are subject to change. Please contact event organizers to confirm listed information.

**Winter 2016-2017**

## CIR Question & Answer Day

Are you looking for advice about Hiroshima?

Come in for a chat with our C.I.R., Benjamin Swallow!

**DATE & TIME:** Wednesday, December 21, 1:00 pm – 3:30 pm

**PLACE:** International Exchange Lounge

(International Conference Center Hiroshima 1F, 1-5 Nakjima-cho, Naka-ku)

**RESERVATIONS ARE REQUIRED:** Reservations can be made in person or by telephone at the International Exchange Lounge TEL: 082-247-9715 (Lounge open hours 9:00 am – 6:00 pm)

☺ Check the flyer below for more information [PDF, 112KB, 1 page]:

<http://www.pcf.city.hiroshima.jp/ircd/english/lounge/Advice%20about%20hiroshima%20by%20Benjamin.pdf>

## Subsidy for International Exchange/Cooperation Activities

**WHO:** Groups that will hold international exchange/cooperation activities between April and September 2017. An applicant screening will be held. Before applying, please consult the Division.

### SUBSIDY:

| Subsidy for  | Who                                  | Amount   |
|--|--------------------------------------|--|
| 1. Promoting international exchange/cooperation activities | Groups started more than 2 years ago | Activities in Hiroshima City:<br>up to 150,000 yen<br>Activities in other countries:<br>up to 400,000 yen<br>Activities in sister cities:<br>up to 400,000 yen |
| 2. Start-up international exchange/cooperation activities  | Groups started less than 2 years ago | Up to 100,000 yen  |

**APPLICATION:** Submit a prescribed application between Wednesday, January 4 and Friday, February

HiroshimaHeiwaBunkaCenter KokusaiKoryu KyoryokuKa  
3 to 広島 平和 文化 センター国際 交流・協力 課 (Hiroshima Peace Culture

Foundation, International Relations and Cooperation Division). The application forms are available at the division, ward offices, community centers and online at the division's official website <http://www.pcf.city.hiroshima.jp/ircd/>

Edited and published by the Hiroshima Peace Culture Foundation  
International Affairs Department, International Relations and Cooperation Division  
Tel: (082) 242-8879, Fax: (082) 242-7452, E-mail: [internat@pcf.city.hiroshima.jp](mailto:internat@pcf.city.hiroshima.jp)  
International Exchange Lounge  
Tel: (082) 247-9715, E-mail: [golounge@pcf.city.hiroshima.jp](mailto:golounge@pcf.city.hiroshima.jp)  
Website: <http://www.pcf.city.hiroshima.jp/ircd/english/index.html>  
編集・発行 公益財団法人広島平和文化センター国際部国際交流・協力課

**BRIEFING MEETING:** An informed meeting will be held on Thursday, December 15, 6:30pm – 7:30 pm at International Conference Center Hiroshima 3F (1-5 Nakajima-cho, Naka-ku)

**INQUIRIES:** Hiroshima Peace Culture Foundation,  
International Relations and Cooperation Division Tel. 242-8879 Fax. 242-7452

## The East Building is Closed until February 2017.

Due to the renovation works, the exhibition rooms of the Peace Memorial Museum East Building are closed until February 2017. Currently, the Main Building is open to visitors. We apologize for any inconvenience that this may cause and ask for your understanding and cooperation in this matter. The location of the entrance remains in the East Building. The summary panels of the closed East Building are displayed in the gallery of the Main Building.

Information on other museum facilities is as follows.

- Coin-Lockers: Available
- Audio Guide: Available for the Main Building.
- Museum Shop: A temporary museum shop is set up on the 1<sup>st</sup> floor of the East Building.
- Library: Operating under regular hours
- Rest Space / Café: Operating under regular hours

**INQUIRIES:** Curatorial Division, Hiroshima Peace Memorial Museum Tel. 241-4004

## Come and Listen to a Talk by an A-bomb Legacy Successor

As the A-bomb survivors age, the City of Hiroshima has started a three-year training program for official A-bomb Legacy Successors to ensure that the A-bomb survivors' experiences and desires for peace are faithfully inherited and shared with as many people as possible. A talk by successors is now open to the public without charge, in English or Japanese. (Note: Talks are NOT delivered by A-bomb survivors.)

**SCHEDULE:** 11:00am – noon (Japanese)  
12:30pm – 1:30pm (Japanese)  
2:00pm – 3:00pm (English)  
(Talks are unavailable on days when the Hiroshima Peace Memorial Museum is closed)

**VENUE:** Video Theater, 1<sup>st</sup> Floor, East Building of the Hiroshima Peace Memorial Museum

**TALK CONTENT:**

- An A-bomb survivor's experience and his/her desire for peace.
- Realities of the A-bombing (wartime life in Japan, outline of the A-bomb damage, A-bomb's impact on human bodies, etc.)
- Successor's desire for peace

**INQUIRIES:** Outreach Division, Hiroshima Peace Memorial Museum  
Tel. 242-7828 E-mail: [keihatsu@pcf.city.hiroshima.jp](mailto:keihatsu@pcf.city.hiroshima.jp)

## Special Exhibition: "Memoirs of the Atomic Bombing: The Earliest Accounts of the Hiroshima A-bomb"

**PERIOD:** Friday, January 1 – Wednesday, December 28, 2016

**PLACE:** Hiroshima National Peace Memorial Hall for the Atomic Bomb Victims, B1

**ADMISSION:** Free

**INQUIRIES:** Hiroshima National Peace Memorial Hall for the Atomic Bomb Victims  
Tel. 543-6271 Fax. 543-6273

Edited and published by the Hiroshima Peace Culture Foundation  
International Affairs Department, International Relations and Cooperation Division  
Tel: (082) 242-8879, Fax: (082) 242-7452, E-mail: [internat@pcf.city.hiroshima.jp](mailto:internat@pcf.city.hiroshima.jp)  
International Exchange Lounge  
Tel: (082) 247-9715, E-mail: [golounge@pcf.city.hiroshima.jp](mailto:golounge@pcf.city.hiroshima.jp)  
Website: <http://www.pcf.city.hiroshima.jp/ircd/english/index.html>  
編集・発行 公益財団法人広島平和文化センター国際部国際交流・協力課

# Movie Theaters

December 2016



Here is a general list of movies being shown in theaters around Hiroshima. Due to unpredictable changes in scheduling, listings are subject to change without notice. Foreign films are usually in their original language with Japanese subtitles. When not specified, the admission is **¥1,800** for adults. Theaters offer various kinds of admission discount services, so please inquire at each theater for more information.

## SALON CINEMA

[Hiroshima Toei Plaza Bldg. 8F, 16-10 Hatchobori,  
Naka-ku / Tel: 082-962-7772 /  
URL: <http://www.johakyu.co.jp/>]

- Dec. 3 – 16 **Every Thing Will Be Fine** / '15  
Germany, Canada, France,  
Sweden, Norway
- Dec. 3 – 16 **Remember** / '15 Canada,  
Germany
- Dec. 3 – 16 **The Attorney** / '13 Korea
- Dec. 3 – 16 **Our Kind of Traitor** / '16 UK,  
France
- Until Dec. 9 **La Femme de la Plaque  
Argentique / The Woman in  
the Silver Plate** / '16 France,  
Belgium, Japan
- Dec. 10 – 23 **La Dernière Leçon / The Final  
Lesson** / '15 France
- Dec. 10 – 16 **Ants of a Shrimp** / '16  
Netherlands
- From Dec. 17 **Julieta** / '16 Spain

## CINE TWIN

★ CINE TWIN was closed on October 31, 2016. ★

## HATCHOZA

[Fukuya Department Store Hatchobori 8F,  
6-26 Ebisu-cho, Naka-ku / Tel: 082-546-1158 /  
URL: <http://www.johakyu.co.jp/>]

- From Dec. 1 **Florence Foster Jenkins** /  
'16 UK

## YOKOGAWA CINEMA Tel : 231-1001

[3-1-12 Yokogawa-cho, Nishi-ku / Tel: 082-231-1001 /  
URL: <http://yokogawa-cine.jugem.jp/>]

- Dec. 1 – 14 **Strangers on the Field** /  
'14 Korea
- Dec. 15 – 31 **Hitting the Apex** / '15 USA  
(except Dec. 22 & 29)



## AEON CINEMA HIROSHIMA

[Hiroshima Danbara Shopping Center 6F, 1-3-52  
Danbara-minami, Minami-ku / Tel : 082-261-3770 / URL:  
<http://www.aeoncinema.com/cinema/hiroshima/>]

- Until Dec. 9 **Jason Bourne** / '16 USA
- From Oct. 28 **Inferno** / '16 USA
- From Nov. 11 **Jack Reacher: Never Go  
Back** / '16 USA
- From Nov. 23 **Fantastic Beasts and Where to  
Find Them** / '16 UK, USA
- From Dec. 16 **Rogue One: A Star Wars Story**  
/ '16 USA
- From Dec. 23 **Pete's Dragon** / '16 USA
- From Jan. 27 **Doctor Strange** / '16 USA
- From Feb. 3 **Miss Peregrine's Home for  
Peculiar Children** / '16 USA

## 109 CINEMAS

[Alpark 3F (north bldg.), 4-7-1 Kusatsu-minami, Nishi-ku  
/ Tel: 05700-002-109 /  
URL: <http://www.109cinemas.net/Hiroshima/>]

- From Oct. 28 **Inferno** / '16 USA
- From Nov. 11 **Jack Reacher: Never Go  
Back** / '16 USA
- From Nov. 23 **Fantastic Beasts and Where to  
Find Them** / '16 UK, USA
- From Dec. 1 **Florence Foster Jenkins** /  
'16 UK
- From Dec. 16 **Rogue One: A Star Wars Story**  
/ '16 USA
- From Dec. 23 **Resident Evil: The Final  
Chapter** / '16 USA

## TOHO CINEMAS MIDORII

[Fuji Grand 3F, 1-5-2 Midorii, Asaminami-ku / Tel : 082-  
831-8060 / URL: <http://www.tohotheater.jp/>]  
Adults-¥1,800, University students-¥1,500, From preschoolers  
(3 years old and under) to- High school students-¥1,000,

- From Oct. 28 **Inferno** / '16 USA
- From Nov. 11 **Jack Reacher: Never Go  
Back** / '16 USA
- From Nov. 23 **Fantastic Beasts and Where to  
Find Them** / '16 UK, USA
- From Dec. 1 **Blair Witch** / '16 USA

Please feel free to contact the International Exchange Lounge at 082-247-9715.

E-mail: [golounge@pcf.city.hiroshima.jp](mailto:golounge@pcf.city.hiroshima.jp)

Winter 2016-2017



From Dec. 1 **Florence Foster Jenkins / '16 UK**  
 From Dec. 16 **Rogue One: A Star Wars Story / '16 USA**  
 From Jan. 21 **Silence / '17 USA, Italy, Japan, Mexico**  
 From Jan. 27 **Snowden / '16 USA**

### HIROSHIMA WALD 11

[AEON Mall Hiroshima Fuchu 4F, 2-1-1 Osu, Fuchu-cho, Aki-gun / Tel : 082-561-0600 / URL: <http://wald11.com/index.html>]

From Oct. 28 **Inferno / '16 USA**  
 From Oct. 29 **Bridget Jones's Baby / '16 UK**  
 From Nov. 11 **Jack Reacher: Never Go Back / '16 USA**  
 From Nov. 23 **Fantastic Beasts and Where to Find Them / '16 UK, USA**  
 From Dec. 1 **Florence Foster Jenkins / '16 UK**  
 From Dec. 16 **Rogue One: A Star Wars Story / '16 USA**  
 From Dec. 23 **Resident Evil: The Final Chapter / '16 USA**  
 From Dec. 24 **Oasis: Supersonic / '16 UK**  
 From Jan. 7 **Tale of Tales / Il Racconto Deiracconti / '15 Italy, France**  
 From Jan. 21 **The Accountant / '16 USA**  
 From Jan. 27 **The Magnificent Seven / '16 USA**

### Movie Showings at 10am in the Morning

Dec. 3 – 16 **Suna no Utsuwa / '74 Japan**  
 Dec. 17 – 30 **Vertigo / '58 USA**  
 Dec. 31 – **我的父親母親 / The Road Home / '99 USA, China**  
 Jan. 13 **那人 那人 那狗 / Postmen in the Mountains / '99 China**  
 Jan. 14 – 27 **To Kill a Mockingbird / '62 USA**  
 Jan. 18 – **The Miracle Worker / '62 USA**  
 Feb. 10 **Ukigumo / '55 Japan**  
 Feb. 11 – 24 **Out of Africa / '85 USA**  
 Feb. 25 –  
 Mar. 10  
 Mar. 11 – 24

### T-JOY HIGASHI HIROSHIMA

[Fuji Grand Higashi Hiroshima 3F, 4405 Misonou, Saijo-cho, Higashi Hiroshima-shi / Tel : 082-493-6779 / URL: <http://www.t-joy.net/site/hiroshima/index/html>]

From Oct. 28 **Inferno / '16 USA**  
 From Nov. 23 **Fantastic Beasts and Where to Find Them / '16 UK, USA**  
 From Nov. 11 **Jack Reacher: Never Go Back / '16 USA**  
 From Nov. 23 **Fantastic Beasts and Where to Find Them / '16 UK, USA**  
 From Dec. 16 **Rogue One: A Star Wars Story / '16 USA**  
 From Dec. 23 **Resident Evil: The Final Chapter / '16 USA**  
 From Jan. 21 **The Accountant / '16 USA**



Please feel free to contact the International Exchange Lounge at 082-247-9715.

E-mail: [golounge@pcf.city.hiroshima.jp](mailto:golounge@pcf.city.hiroshima.jp)

Winter 2016-2017

# Bilingual TV Programs



December 2016

|                |                  |
|----------------|------------------|
| #1: NHK Sogo   | #4: Hiroshima TV |
| #2: NHK E Tele | #5: Home TV      |
| #3: RCC        | #8: TSS          |

◆ Some changes may occur because of special programming.

## NEWS

### Monday - Sunday

NHK News 7 / 7:00pm – 7:30pm (#1)

### Monday - Friday

News Watch 9 / 9:00pm – 10:00pm (#1)

◇ Except the 29<sup>th</sup> & the 30<sup>th</sup>

## REGULAR PROGRAMS

### Thursday

TED / 11:00pm – 11:25pm (#2)

◇ Rerun: Mon., 12:45am – 1:10am

### Friday

Japanese Lesson / 1:35pm – 1:50pm (#2)

Through the Wormhole / 10:00pm – 10:45pm

(#2) ◇ Except the 30<sup>th</sup>

### Saturday

Dramatic Earth (Documentary Program) /

7:00pm – 7:45pm (#2) ◇ Except the 31<sup>st</sup>

◇ Rerun: Mon., midnight – 12:45am

## DRAMAS

### Monday

心娶女人 / Marry Me or Not? ('15 Taiwan) /

the 5<sup>th</sup>: 1:35am – 2:30am; the 12<sup>th</sup>: 2:35am – 3:30am; the 26<sup>th</sup>: 2:00am – 2:55am (#4)

◇ Except the 19<sup>th</sup>

### Wednesday

100 Things to Do Before High School ('14 USA) /

7:25pm – 7:50pm (#2) ◇ From the 7<sup>th</sup>

◇ the 31<sup>st</sup>: 10:00am – 11:37am (rerun)

### Saturday

Sam & Cat ('13 USA) / 6:25pm – 6:50pm (#2)

◇ Except the 31<sup>st</sup>

### Sunday

Downton Abbey ('14 UK, USA) / 11:00pm –

midnight (#1) ◇ the 4<sup>th</sup>: 11:00pm – 12:15am

◇ From the 4<sup>th</sup> ◇ Except the 25<sup>th</sup>

## ANIMATIONS

### Friday

Sushi Town / 3:55pm – 4:00pm (#2)

### Saturday

Curious George / 8:35am – 9:00am (#2)

◇ the 31<sup>st</sup>: 7:19am – 8:06am

The Penguins of Madagascar / 6:00pm – 6:25pm (#2)

### Sunday

Thomas & Friends / 5:30pm – 5:50pm (#2)

## ◆ Special Foreign Animation Programs ◆ (#2)

3<sup>rd</sup> Miffy / 4:35pm – 5:00pm

23<sup>rd</sup> Thomas & Friends: Christmas Special / 9:00am – 9:58am

◇ the 24<sup>th</sup>: 4:00pm – 5:00pm (rerun)

25<sup>th</sup> SpongeBob & SquarePants / 4:15pm – 4:45pm

31<sup>st</sup> The Gruffalo ('09 UK, Germany) / 9:06am – 10:00am

## MOVIES

4<sup>th</sup> SAFE / '12 USA / 1:53am-3:40am (#3)

10<sup>th</sup> The Delta Force / '85 USA / 12:45am-2:46am (#3)

11<sup>th</sup> Delta Force 2: Operation Stranglehold / '90 USA / 1:53am-3:45am (#3)

18<sup>th</sup> Exit Wounds / '01 USA / 1:50am-3:45am (#8)

18<sup>th</sup> Resident Evil: Afterlife / '10 USA / 9:00pm-11:10pm (#5)

24<sup>th</sup> Resident Evil: Retribution / '12 USA / 9:00pm-11:06pm (#5)

25<sup>th</sup> Home Alone 2: Lost in New York / '92 USA / 2:08am-3:55am (#3)

## SPECIAL PROGRAM

31<sup>st</sup> NHK Symphony Orchestra Tokyo Special Concert: Beethoven / No.9 d minor op. 125 "Choral" / 8:00pm – 9:20pm (#2) ◇ Broadcasted in Japanese only

## SPORTS

### Marathon

4<sup>th</sup> Fukuoka International Open Marathon Championship / Noon – 2:26pm (#5)

◇ Broadcasted in Japanese only

### Figure Skating

■ ISU Grand Prix of Figure Skating Final

2016/2017 (#5) ◇ Broadcasted in Japanese only

9<sup>th</sup> 8:00pm – 9:54pm

10<sup>th</sup> 6:56pm – 8:54pm

11<sup>th</sup> 7:58pm – 12:45pm

### Soccer

■ FIFA Club World Cup Japan 2016 (#4)

◇ Broadcasted in Japanese only

14<sup>th</sup> 7:20pm – 9:29pm

15<sup>th</sup> 7:20pm – 9:29pm

18<sup>th</sup> 3:50pm – 6:20pm, 7:20pm – 9:29pm

Please feel free to contact to the International Exchange Lounge at 082-247-9715.

E-Mail: [golounge@pcf.city.hiroshima.jp](mailto:golounge@pcf.city.hiroshima.jp)

Winter 2016-2017

# Concerts & Plays



## Ticket Offices

- ① EDION Play Guide (*Honkan*, B1F) (Kamiya-cho, Naka-ku; Tel. 247-5111)
- ② YAMAHA Music (Kamiya-cho, Naka-ku; Tel. 244-3779 Closed on the 1<sup>st</sup> & the 3<sup>rd</sup> Wednesdays)
- ③ Hiroshima Yume Plaza (Hondori, Naka-ku; Tel. 544-1122 Closed on Wednesdays)
- ④ Kawai Music Shop (Horikawa-cho, Naka-ku; Tel. 243-9291 Closed on Tuesdays)
- ⑤ Fukuya Department Store, Hatchobori (7F) (Ebisu-cho, Naka-ku; Tel. 246-6111)
- ⑥ Fukuya Department Store, Hiroshima Station (7F) (Matsubara-cho, Minami-ku; Tel. 568-3111)
- ⑦ Alpark Tenmaya (3F) (Inokuchi-myojin, Nishi-ku; Tel. 501-1111)
- ⑧ Hiroshima Arts Gakki (Hatchobori, Naka-ku; Tel. 227-6601)

Date / Starting Time (Opening Time) / Venue / Ticket Price / Tickets Go on Sale Date / Ticket Offices / Inquiries

♪ Event schedules are subject to change.

Please contact the event office before you go. ♪

## December

### ★ Tokyo Ska Paradise Orchestra: 2016 Live House Tour "Paradise Has No Border"

① 2<sup>nd</sup> Fri. ~~② 3<sup>rd</sup> Sat.~~ / ① the 2<sup>nd</sup> – 7:00pm (6:15pm)  
~~② the 3<sup>rd</sup> – 6:00pm (5:15pm)~~ / Hiroshima Club Quattro / ¥5,500 / Now on sale / e+, Ticket PIA, Lawson / Candy Promotion Hiroshima 082-249-8334

### ★ Concert "It is in the minds of men that the defences of peace must be constructed"

3<sup>rd</sup> Sat. / 3:00pm (2:00pm) / Hiroshima Bunka Gakuen HBG Hall / Advance: S-¥5,000 A-¥4,000 B-¥3,000 Students (B seat only)-¥2,000; At the door: S-¥6,000 A-¥5,000 B-¥4,000 Students (B seat only)-¥2,000 (Student tickets are only sold at the NPO Music bring Peace office.) / Now on sale / ①⑥⑦, Ticket PIA, NPO Music bring Peace / NPO Music bring Peace 082-247-8604 E-mail: info@music-peace.jp

♪ Conductor: Kazushi Ono / Piano: Mami Hagiwara / Orchestra: Hiroshima Symphony Orchestra

### ★ Elisabeth University of Music: Christmas Charity Concert

3<sup>rd</sup> Sat. / 6:30pm (6:00pm) / Elisabeth University of Music, Cecilia Hall / ¥1,000 / Now on sale / Elisabeth University of Music, Ticket PIA / Elisabeth University of Music 082-225-8004



### ★ Concert for Promising Young Musicians Hiroshima 2016

7<sup>th</sup> Wed. / 6:30pm (6:00pm) / JMS Aster Plaza / Advance: Adults-¥1,800 Senior high, Junior high & Elementary school students-¥1,200; At the door: Adults-¥2,100 Senior high, Junior high & Elementary school students-¥1,400 (all non-reserved seats) / Now on sale / ①⑥⑦, Chugoku Shimbun, Ticket PIA, Lawson Ticket, JMS Aster Plaza, Kumin Bunka Centers / Hiroshima City Bunka Zaidan 082-244-0750

### ★ s\*\*t kingz: Wonderful Clunker

8<sup>th</sup> Thurs. / 7:00pm (6:30pm) / JMS Aster Plaza / Adults-¥6,000 Students (advance tickets only)-¥4,500 ✧ Seat number for student ticket will be designated on the event day. Student ID is required. / Now on sale / ①⑥, Lawson, Ticket PIA, e+, Seven-Eleven / TSS 082-253-1010 (Weekdays, 10am – 6pm) ♪ s\*\*t kingz is a dance team consisting of four men.

### ★ Concert by Hiroshima Symphony Orchestra Members

9<sup>th</sup> Fri. / 6:30pm (6:00pm) / Hatsukaichi Bunka Hall Sakurapia / Adults-¥1,500 High school students and under-¥500 / Now on sale / ①, Sakurapia / Hatsukaichi Bunka Hall Sakurapia 0829-20-0111

### ★ Marionette Christmas Concert

10<sup>th</sup> Sun. / 4:00pm (3:30pm) / Hatsukaichi Bunka Hall Sakurapia / Advance-¥2,500 At the door-¥2,800 / Now on sale / Please ask the concert organizer for ticket information. / Kazuhiko Yamada Guitar School 090-4800-3423  
 ♪ Portuguese guitar & mandolin concert

Please feel free to contact the International Exchange Lounge at 082-247-9715.

E-mail: golounge@pcf.city.hiroshima.jp

Winter 2016-2017

NEW!!

★ **Minako Ishibashi & Ritsuko Shoda**  
**Euphonium Duo Recital**

10<sup>th</sup> Sat. / 6:00pm (5:30pm) / Elisabeth University  
of Music, Xavier Hall / Adults-¥2,500 Students-  
¥1,500 / Now on sale / ⑧ / 082-230-0046 (Shoda)  
E-mail: euphonium.duo@gmail.com

★ **St. Petersburg Chamber Ensemble:**  
**Christmas / Ave Maria**

13<sup>th</sup> Tue. / 7:00pm (6:30pm) / Hatsukaichi Bunka  
Hall Sakurapia / ¥4,500 / Now on sale / ①,  
Sakurapia / Hatsukaichi Bunka Hall Sakurapia  
0829-20-0111

NEW!!

★ **Christmas Concert by Four Flutists**

15<sup>th</sup> Thurs. / 6:45pm (6:15pm) / Nishi Kumin  
Bunka Center / Advance: Adults-¥2,000 Students-  
¥1,000; At the door: Adults-¥2,500 Students-  
¥1,500 / Now on sale / ⑧ / 090-6434-2434  
(Yoshida) E-mail: cloevrflute@yahoo.co.jp

★ **Siena Wind Orchestra Concert 2016**  
**conducted by Yutaka Sado**

15<sup>th</sup> Thurs. / 7:00pm (6:00pm) / Ueno Gakuen Hall  
/ Advance: S-¥7,000 A-¥5,800; At the door: S-  
¥7,500 A-¥6,300 / Now on sale / Seven-Eleven,  
RCC Online Ticket / RCC Office 082-222-1133  
(Mon. – Fri., 10:00am – 5:00pm)  
♪ Baritone: Kyu Won Han

NEW!!

★ **Takkyu Ishino Lunatique Tour 2016**

16<sup>th</sup> Fri. / 7:00pm – 11:00pm / Hiroshima Club  
Quattro / Advance-¥3,500 At the door-¥4,000 /  
Now on sale / Lawson, Ticket PIA, e+, ①, Tower  
Records Hiroshima / Hiroshima Club Quattro  
082-542-2280

★ **Outreach Forum in Hiroshima Gala Concert**

17<sup>th</sup> Sat. / 2:00pm (1:30pm) / Hiroshima Kenmin  
Bunka Center / Adults-¥1,000 High school  
students and under-Free admission (all non-reserved  
seats) / Now on sale / Hiroshima Kenmin Bunka  
Center / Hiroshima Bunka Shinko Zaidan 082-  
249-8385 (Mon. – Fri., 10:00am – 6:00pm)

★ **Yamaha Salon Concert (piano concert)**

18<sup>th</sup> Sun. / ① 11:00am ② 2:00pm / Yamaha Music  
Salon (30 seats) / ¥1,000 for each time slot /  
on sale / ② / Hiroshima Summer Concert  
39-6902,  
Yamaha Music Retailing Hiroshima 082-244-3760

NEW!!

★ **Christmas Jazz Concert**

17<sup>th</sup> Sat. / 4:00pm (3:30pm) / lifeone221 Hall /  
Advance-¥2,500 At the door-¥3,000 / Please ask  
the concert organizer for ticket information. /  
lifeone music 082-922-0028 E-mail:  
lifeone@cyber.ocn.ne.jp

NEW!!

★ **Misa Shitaka Piano Recital**

18<sup>th</sup> Sun. / 1:30pm (1:00pm) / Gewand Halle /  
Advance: Adults-¥2,000 Students-¥1,000; At the  
door: Adults-¥2,500 Students-¥1,500 / Now on  
sale / e+, FamilyMart, ① / Alpen Music Office  
03-5739-1663

NEW!!

★ **Mizue Akutagawa Ballet: The Nutcracker**

18<sup>th</sup> Sun. / 2:00pm (1:30pm) / Hiroshima Bunka  
Gakuen HBG Hall / ¥2,500 (all non-reserved seats)  
/ Please ask the ballet school for ticket information.  
/ Mizue Akutagawa Ballet 082-264-2612

★ **Spanish Dance Studio – Aqui –:**  
**Alma de Flamenco**

NEW!!

18<sup>th</sup> Sun. / 2:30pm (2:00pm) / JMS Aster Plaza /  
Advance-¥2,500 At the door-¥2,800 (all non-  
reserved seats) / Now on sale / Ticket reservations  
& Inquiries: E-mail: mail2008@flamenco-aqui.net  
082-962-6388

★ **“Dai-ku” Hiroshima 2016**

18<sup>th</sup> Sun. / 3:00pm (2:00pm) / Hiroshima Sun Plaza  
Hall / Advance: Reserved seats-¥4,300 Non-  
reserved seats: 3,800; At the door: Reserved seats-  
¥4,800 Non-reserved seats-¥4,500 / Now on sale  
/ ①②③, Sun Plaza, Chugoku Shimbun, Seven-  
Eleven, Lawson, Ticket PIA / RCC Office 082-  
222-1133 (Mon. – Fri., 9:30am – 5:30pm)

♪ “Dai-ku” is Symphony No. 9 in D minor Op. 125  
“Choral” composed by Beethoven. It is usually called  
“Dai-ku” in Japanese.

Performers:

Conductor: Kazufumi Yamashita / Guest: Ryota  
Komatsu (Bandoneon) / Soprano: Miwako Handa  
/ Alto: Akemi Sakamoto / Tenor: Satoshi Nishimura /  
Baritone: Yasuo Horiuchi / Orchestra: Hiroshima  
Symphony Orchestra / Choir: Dai-ku Hiroshima 2016  
Choir

NEW!!

★ **Masaki Ueno Christmas Concert**

22<sup>nd</sup> Thurs. / 6:30pm / Higashi Kumin Bunka  
Center / Adults-¥3,000 Students-¥2,000 / Please  
ask the concert organizer for ticket information. /  
090-5163-2848 (Ueno)  
♪ Violin, piano & soprano concert



Please feel free to contact the International Exchange Lounge at 082-247-9715.

E-mail: golounge@pcf.city.hiroshima.jp

Winter 2016-2017



★ **El Combo De La Paz: 10<sup>th</sup> Anniversary  
Salsa Live ~ Gracias Hiroshima! ~**

22<sup>nd</sup> Thurs. / 7:30pm (7:00pm) / Hiroshima Club  
Quattro / Advance-¥2,000 At the door-¥2,500 /  
Now on sale / e+, Ticket PIA, Lawson / Hiroshima  
Club Quattro 082-542-2280

★ **Ifudodo Classic in Hiroshima**

NEW!!

24<sup>th</sup> Sat. & 25<sup>th</sup> Sun. / Free admission (except the  
concert at Hiroshima Bunka Gakuen HBG Hall on  
the 25<sup>th</sup>) / Executive Committee 082-244-0750

**PROGRAM:** ♪ Each venue will open 30 min.  
before the starting time.

♪ **Dec. 24 (Sat.)**

- ① 10:30am – 11:15am  
JMS Aster Plaza, *Tamokuteki* Studio  
(Kako-machi, Naka-ku)
- ② Noon – 1:00pm  
Hiroshima Prefectural Art Museum 1F, Lobby  
(Kami-nobori-cho, Nakai-ku)
- ③ 1:30pm – 2:20pm  
Chugoku Denryoku Co. 1F, Lobby  
(Komachi, Naka-ku)
- ④ 2:50pm – 5:40pm  
NHK Hiroshima 1F, Lobby  
(Otemachi, Naka-ku)
- ⑤ 5:10pm – 6:00pm  
Hiroshima Museum of Art  
(Motomachi, Naka-ku)

♪ **Dec. 25 (Sun.)**

- ① 10:15 – 11:15am  
Former Bank of Japan, Hiroshima Branch  
(Fukuro-machi, Naka-ku)
- ② 11:30am – 12:20pm  
Shareo (underground shopping mall), Chuo  
Hiroba (Motomachi-Chikagai, Naka-ku)
- ③ 12:35pm – 1:35pm  
Hiroshima City Hall 1F, *Shimin* Lobby  
(Kokutaiji-machi, Naka-ku)
- ④ 1:40pm – 2:25pm  
Fukuya Department Store, Hiroshima  
Station 6F (Matsubara-cho Minami-ku)
- ⑤ 3:30pm – 4:30pm  
RIHGA Royal Hotel Hiroshima 1F, Chapel  
(Motomachi, Naka-ku)
- ⑥ 6:00pm – 8:30pm  
Hiroshima Bunka Gakuen HBG Hall  
(Kako-machi, Naka-ku)  
✧ Tickets are required for this concert.  
Tickets: Non-reserved seats-¥1,000  
Reserved seats-¥1,500  
Ticket offices: ①⑥⑦, JMS Aster Plaza,  
Kumin Bunka Centers (non-reserved  
seat tickets only) & Ticket PIA

☺ This concert is organized by Mr. Eiji Oue, who is  
a Hiroshima native and currently a conductor  
laureate of Osaka Philharmonic Orchestra. Mr.  
Oue will conduct or accompany on the piano at  
almost all venues.

★ **Hiroshima Kammermusik Verein:  
The 2<sup>nd</sup> Concert**

27<sup>th</sup> Tue. / 7:00pm (6:30pm) / JMS Aster Plaza /  
Adults-¥3,000 Students-¥1,000 (all non-reserved  
seats) / Now on sale / ①, JMS Aster Plaza / H.K.V.  
Executive Committee 090-9818-3849 (Kumazawa)  
E-mail: hirokamv@gmail.com

**January, 2017**

★ **New Year Kagura Festival**

① 2<sup>nd</sup> Mon. ② 3<sup>rd</sup> Tue. / Noon – 6:00pm  
(11:00am) / Ueno Gakuen Hall / Advance: S-  
¥3,000 A-¥2,000; At the door: S-¥3,500 A-  
¥2,500 / Now on sale / ①③, RCC Bunka Center /  
RCC Bunka Center 082-222-0044

★ **glasio blu: Woman, Shaman  
~All my relations~**

NEW!!

7<sup>th</sup> Sat., 8<sup>th</sup> Sun. & 9<sup>th</sup> Mon. / the 7<sup>th</sup> & the 8<sup>th</sup>: ①  
2:00pm (1:45pm) ② 7:00pm (6:30pm); the 9<sup>th</sup>:  
2:00pm (1:45pm) / JMS Aster Plaza / Advance:  
Adults-¥2,000 Students-¥1,000 Family pair  
tickets-¥2,500; At the door: Adults-¥2,500  
Students-¥1,500 Family pair tickets-¥3,000 / Now  
on sale / JMS Aster Plaza / glasio blu E-mail:  
arigato@glasio blu.info ♪ Puppet show

★ **Rintaro Akamatsu Piano Recital 2017**

8<sup>th</sup> Sun. / 2:00pm (1:30pm) / Nishi Kumin Bunka  
Center / Advance: Adults-¥2,500 High school  
students and under-¥1,500; At the door: Adults-  
¥3,000 High school students and under-¥2,000 /  
Now on sale / ②④, Kumin Bunka Centers (except  
Asakita Kumin Bunka Center), JMS Aster Plaza,  
Ticket PIA / Studio Imagine 082-541-0858

★ **Haruna Someya & Eriko Mikami:  
Cello & Piano Duo Concert**

NEW!!

12<sup>th</sup> Thurs. / 6:45pm (6:15pm) / JMS Aster Plaza /  
Adults: Advance-¥2,000 At the door-¥2,500;  
Students-¥1,000 (all non-reserved seats) / Now on  
sale / ④, JMS Aster Plaza / 090-7991-9445  
(Mikami), 090-1402-5764 E-mail:  
someya.haruna@gmail.com (Someya)



Please feel free to contact the International Exchange Lounge at 082-247-9715.

E-mail: golounge@pcf.city.hiroshima.jp

Winter 2016-2017

★ **2017 Kure New Year Concert**

15<sup>th</sup> Sun. / 2:30pm (2:00pm) / Kure City Bunka Hall / S-¥4,320 A-¥3,240 Students-¥1,080 (Student tickets are only sold at Kure City Bunka Hall, Lawson, Ticket PIA, Seven-Eleven.; Student ID is required.) / Now on sale / ①⑥, Chugoku Shimbun, Lawson, Seven-Eleven, Ticket PIA / Kure City Bunka Hall 0823-25-7878

♪ Conductor: Hirofumi Kurita / Piano: Miyuji Kaneko / Orchestra: Hiroshima Symphony Orchestra

★ **Hiroshima Symphony Orchestra: The 366<sup>th</sup> Subscription Concert**

(Sibelius: *Violin Concerto in D minor Op. 47*; Tchaikovsky: *Symphony No. 3 in D major Op. 29 "Polish"*)

20<sup>th</sup> Fri. / 6:45pm (5:45pm) / Hiroshima Bunka Gakuen HBG Hall / S-¥5,200 A-¥4,700 B-¥4,200 Students-¥1,500 (Student tickets are only sold at the Hiroshima Symphony Orchestra Office.) / Now on sale / ①⑤⑥⑦, Ticket PIA, Lawson (convenience store), Chugoku Shimbun & Hiroshima Symphony Orchestra Office / Hiroshima Symphony Orchestra Office 082-532-3080 E-mail: info@hirokyo.or.jp

♪ Conductor: Kenichiro Kobayashi / Violin: Alexandra Soumm

★ **Noh Performance: "Semimaru"**

22<sup>nd</sup> Sun. / 2:00pm (1:30pm) / JMS Aster Plaza / Adults-¥3,500 Senior & Junior high school students-¥1,000 / Now on sale / Ticket PIA (①⑥, Kobunkan Bookstore (Alpark & Kinzagai store), Poplar A. City store, Seven-Eleven) / Asobiza 090-4691-0856 (Yamashita) E-mail: asobiza@asobiza.com

♪ This is a traditional Japanese performing art.

★ **Ryuji Kunimatsu Guitar Recital 2016-2017**

22<sup>nd</sup> Sun. / 3:00pm (2:30pm) / Hiroshima Ushita Church / Advance: Adults-¥3,000 Students-¥2,000; At the door: Adults-¥3,500 Students-¥2,000 / Ticket reservation & Inquiries: Pasion Musical 0774-45-4645 E-mail: pasionmusical@hotmail.co.jp

★ **Hiroshima Symphony Orchestra Discovery Series: "Gift"**

(Toshio Hosokawa: <Metamorphosis> For Clarinet and String Orchestra with Percussion; Reger: Variations and Fugue on a Theme by Mozart Op. 132; Mozart: Symphony No. 40 in G minor K. 550)

27<sup>th</sup> Fri. / 6:45pm (5:45pm) / JMS Aster Plaza / S-¥5,200 A-¥4,200 B-¥3,200 Students-¥1,000 (Student tickets are only sold at the Hiroshima Symphony Orchestra Office.) / Now on sale / ①⑤⑥⑦, Ticket PIA, Lawson (convenience store), Chugoku Shimbun, Hiroshima Symphony Orchestra Office, JMS Aster Plaza / Hiroshima Symphony

Orchestra Office 082-532-3080 E-mail: info@hirokyo.or.jp

♪ Conductor: Kazuyoshi Akiyama  
Clarinet: Hideyo Shinagawa

★ **Hiroshima Opera Ensemble: Rusalka (by A. Dvořák)**

NEW!!

① 28<sup>th</sup> Sat. ② 29<sup>th</sup> Sun. / ① the 28<sup>th</sup>: 6:00pm (5:15pm) ② the 29<sup>th</sup>: 2:00pm (1:15pm) / JMS Aster Plaza / ¥2,500 (all non-reserved seats) / Now on sale / ①⑥⑦, JMS Aster Plaza, Ticket PIA / Hiroshima Opera Ensemble Office 082-294-6144 or 090-3630-1561

♪ This will be played in original language with Japanese subtitles.

NEW!!

★ **Sekkyo Genji-bushi Ningyo Shibai Chorakuzo (Japanese puppet show)**

29<sup>th</sup> Sun. / 1:00pm (12:30pm) / Hatsukaichi Bunka Hall Sakurapia / Adults-¥500 High school students and under-¥300 ✧ Student tickets are sold at Sakurapia only. / Now on sale / ①, Sakurapia / Hatsukaichi Bunka Hall Sakurapia 0829-20-0111  
♪ *Chorakuzo* is a traditional Japanese puppet show. It has been designated as a Hiroshima Prefectural intangible folklore cultural asset.

**February, 2017**★ **An Evening of Classical Music**

NEW!!

3<sup>rd</sup> Fri. / 6:30pm (6:00pm) / Higashi Kumin Bunka Center / Free admission / 090-7996-0588 (Hikita)  
♪ Oboe, trombone, euphonium & piano concert

★ **Jeff Beck Japan Tour**

4<sup>th</sup> Sat. / 6:30pm (5:30pm) / Ueno Gakuen Hall / S-¥12,000 A-¥11,000 / Now on sale / ①, Lawson, e+, Ticket PIA / Yumebanchi Hiroshima 082-249-3571 (Mon. – Fri., 11:00am – 7:00pm), UDO Music Office 03-3402-3999

★ **Winter Concert 2017: HOTrio**

NEW!!

4<sup>th</sup> Sat. / 6:45pm (6:15pm) / Aki Kumin Bunka Center / Advance: Adults-¥2,000 High school students and under-¥1,000; At the door: Adults-¥2,500 High school students and under-¥1,500 / JMS Aster Plaza, Kumin Bunka Centers / Aki Kumin Bunka Center 082-824-1330 (closed on Mondays)

★ **coba tour 2017**

10<sup>th</sup> Fri. / 7:00pm (6:00pm) / Hiroshima Club Quattro / ¥6,000 (drinks are extra.) / Now on sale / ①, Lawson, Ticket PIA, Seven-Eleven, e+ / TSS 082-253-1010  
♪ coba is an accordion player.

Please feel free to contact the International Exchange Lounge at 082-247-9715.

E-mail: golounge@pcf.city.hiroshima.jp

Winter 2016-2017



★ **Sakurako Waseda Violin Concert**

NEW!!

11<sup>th</sup> Sat. / 2:30pm (2:00pm) / Hatsukaichi Bunka Hall Sakurapia / Adults-¥1,000 High school students and under-¥500 (all non-reserved seats) / Now on sale / Sakurapia / Hatsukaichi Bunka Hall Sakurapia 0829-20-0111

★ **Les Freres with Orchestra Ensemble Kanazawa Symphonic Tour 2017**

12<sup>th</sup> Sun. / 2:00pm (1:30pm) / Hatsukaichi Bunka Hall Sakurapia / Adults-¥5,000 25 years old and under-¥2,500 (U-25 tickets are only sold at Sakurapia.) / Now on sale / ①, Ticket PIA, Lawson, Sakurapia / Hatsukaichi Bunka Hall Sakurapia 0829-20-0111

★ **Hiroshima Symphony Orchestra: Masterpiece Concert ~ Winter ~**

(Dvořák: *Carnival Overture Op. 92*; Mendelssohn: *Violin Concerto in E minor Op. 64*; Dvořák: *Symphony No. 9 in E minor Op. 95 "From the New World"*)

19<sup>th</sup> Sun. / 3:00pm (2:00pm) / Hiroshima Kokusai Kaigijo (International Conference Center Hiroshima), Phoenix Hall / S-¥4,200 Pair tickets (S seats)-¥6,400 A-¥3,200 B-¥2,200 Students-¥1,500 (Students tickets are only sold at the Hiroshima Symphony Orchestra Office.) / Now on sale / ①⑤⑥⑦, JMS Aster Plaza, Chugoku Shimbun, Hiroshima Symphony Orchestra Office / Hiroshima Symphony Orchestra 082-532-3080 E-mail: info@hirokyo.or.jp

♫ Conductor: Kazuyoshi Akiyama / Violin: Teiko Maehashi

★ **Hironori Ogawa Marimba Concert**

23<sup>rd</sup> Thurs. / ① 2:00pm (1:30pm) ② 7:00pm (6:30pm) / Nishi Kumin Bunka Center / Advance-¥1,500 At the door-¥2,000 (all tickets are for non-reserved seats.) / Now on sale / JMS Aster Plaza, Kumin Bunka Centers / Nishi Kumin Bunka Center 082-234-1960 (9:00am – 9:00pm, closed on Mondays)

♫ Marimba: Eiko Ikegami, Sara Tatsuyama

★ **Hiroshima Symphony Orchestra: The 367<sup>th</sup> Subscription Concert**

(Mendelssohn: *Overture "Die Schöne Melusine" Op. 32*; Liszt: *Piano Concerto No. 1 in E-flat major S. 124/R. 455*; Schumann: *Symphony No. 1 in B-flat major Op. 38 "Spring"*)

26<sup>th</sup> Sun. / 3:00pm (2:00pm) / Hiroshima Bunka Gakuen HBG Hall / S-¥5,200 A-¥4,700 B-¥4,200 Students-¥1,500 (Student tickets are only sold at the Hiroshima Symphony Orchestra Office.) / From Mon., December 26 / ①⑤⑥⑦, Ticket PIA, Lawson (convenience store), Chugoku Shimbun & Hiroshima Symphony Orchestra Office / Hiroshima Symphony Orchestra Office 082-532-3080 E-mail: info@hirokyo.or.jp

♫ Conductor: Clemens Schuldt / Piano: Kemal Gekic

March, 2017★ **Family Musical****Thomas & Friends: Treasures on the Island of Sodor**

4<sup>th</sup> Sat. / ① Noon (11:30am) ② 2:30pm (2:00pm) / Hiroshima Bunka Gakuen HBG Hall / ¥2,800 / Now on sale / Lawson, Ticket PIA, e+, Seven-Eleven, ①⑥ / TSS Office 082-253-1010 (Mon. – Fri., 10:00am – 6:00pm)

NEW!!

NEW!!

★ **Bunraku (traditional Japanese puppet play)**

4<sup>th</sup> Sat. / ① 1:30pm (1:00pm) ② 6:00pm (5:30pm) / JMS Aster Plaza / Stalls-¥4,500 Balcony seats-¥2,500 / From Tue., December 6 (from Sat., December 3 at JMS Aster Plaza) / ①⑥, JMS Aster Plaza, Chugoku Shimbun / JMS Aster Plaza 082-244-8000

NEW!!

★ **Ayako Ishikawa Violin Concert 2017 in Hiroshima**

4<sup>th</sup> Sat. / 2:00pm (1:30pm) / Hiroshima Kokusai Kaigijo (International Conference Center Hiroshima), Phoenix Hall / ¥5,000 / Now on sale / ①⑥⑦ / Hiroshima HOME TV 082-221-7116 (Mon. – Fri., 10:00am – 5:00pm); Samon Promotion 06-6225-2237 (Mon. – Fri., 10:00am – 6:00pm)

★ **Hiroshima Symphony Orchestra Discovery Series: "Gift"**

(Hidemaro Konoye (arr.): *Etenraku*; Hiroshi Ohguri: *Legend for Orchestra (After the Tale of Ama-no-Iwayado)*; Messiaen: *Sept Haïkai – Esquisses Japonaises pour Piano et Orchestre* – ; Mozart: *Symphony No. 41 in C major K. 551 "Jupiter"*)

9<sup>th</sup> Thurs. / 6:45pm (5:45pm) / JMS Aster Plaza / S-¥5,200 A-¥4,200 B-¥3,200 Students-¥1,000 (Student tickets are only sold at the Hiroshima Symphony Orchestra Office.) / From Mon., January 9, 2017 (from Tue., January 10, 2017 at the Hiroshima Symphony Orchestra Office) / ①⑤⑥⑦, Ticket PIA, Lawson (convenience store), Chugoku Shimbun, Hiroshima Symphony Orchestra Office, JMS Aster Plaza / Hiroshima Symphony Orchestra Office 082-532-3080 E-mail: info@hirokyo.or.jp

♫ Conductor: Kazuyoshi Akiyama  
Piano: Hiroshi Nagao

★ **Hiroshima Symphony Orchestra: The 368<sup>th</sup> Subscription Concert**

(Mozart: *Divertimento in D major K. 136*; Mozart: *Clarinet Concerto in A major K. 622*; R. Strauss: *Ein Heldenleben Op. 40*)

18<sup>th</sup> Sat. / 3:00pm (2:00pm) / Hiroshima Bunka Gakuen HBG Hall / S-¥5,200 A-¥4,700 B-¥4,200 Students-¥1,500 (Student tickets are only sold at the Hiroshima Symphony Orchestra Office.) /

Please feel free to contact the International Exchange Lounge at 082-247-9715.

E-mail: golounge@pcf.city.hiroshima.jp

Winter 2016-2017

From Wed., January 18, 2017 / ①⑤⑥⑦, Ticket  
 PIA, Lawson (convenience store), Chugoku  
 Shimbun & Hiroshima Symphony Orchestra Office  
 / Hiroshima Symphony Orchestra Office 082-532-  
 3080 E-mail: info@hirokyo.or.jp  
 ♪ Conductor: Kazuyoshi Akiyama  
 Clarinet: Daniel Ottensamer

★ **Hiroshima City Opera:**

**La Bohème (by G. Puccini)**

① 18<sup>th</sup> Sat. ② 19<sup>th</sup> Sun. / ① 5:00pm (4:00pm)  
 ② 2:00pm (1:00pm) / JMS Aster Plaza / SS-¥7,000  
 S-¥6,000 Non-reserved seats-¥5,000 Students-  
 ¥3,500 ☆ Student tickets are only sold on the  
 performance dates. / Now on sale / ①, JMS Aster  
 Plaza / Hiroshima City Opera 090-7897-0888  
 ♪ This will be played in Italian with Japanese subtitles.

NEW!!

**April, 2017**

★ **Norah Jones**

19<sup>th</sup> Wed. / 6:30pm (6:00pm) / Hiroshima Bunka  
 Gakuen HBG Hall / S-¥9,500 A-¥8,500 / From  
 Sat., December 3 / Lawson, e+, Ticket PIA, ① /  
 Yumebanchi Hiroshima 082-249-3571

NEW!!

**May, 2017**

★ **Kotaro Oshio: The 15<sup>th</sup> Anniversary Tour**  
**“KTR x GTR”**

4<sup>th</sup> Thurs. / 5:00pm (4:30pm) / Hiroshima Club  
 Quattro / ¥5,500 (all non-reserved seats) / From  
 Sat., January 28, 2017 / e+, Ticket PIA, Lawson /  
 Yumebanchi Hiroshima 082-249-3571  
 ♪ This is an acoustic guitar concert.

★ **Hats Music Festival Vol. 2:**

**Violin Concert by Taro Hakase, Chisako**  
**Takashima & Iwao Furusawa**

14<sup>th</sup> Sun. / 5:00pm (4:30pm) / Hiroshima Bunka  
 Gakuen HBG Hall / ¥8,500 / From Sat., February  
 11, 2017 / Lawson, Ticket PIA, e+, ①⑥ / Candy  
 Promotion Hiroshima 082-249-8334

NEW!!



Please feel free to contact the International Exchange Lounge at 082-247-9715.

E-mail: golounge@pcf.city.hiroshima.jp

Winter 2016-2017



# Event Halls

◆ **Hiroshima Bunka Gakuen HBG Hall** 広島文化学園 HBG ホール

(3-3 Kako-machi, Naka-ku, Hiroshima Tel. 082-243-8881)

- ▶ Take the No.24 bus bound for Yoshijima Eigyocho (吉島営業所) and get off at Kako-machi (加古町). Walking time to destination: 2 minutes

◆ **Hiroshima Kenmin Bunka Center** 広島県民文化センター

(1-5-3 Ote-machi, Naka-ku, Hiroshima Tel. 082-245-2311)

- ▶ Take a streetcar or a bus and get off at Hondori (本通) or Kamiya-cho (紙屋町). Walking time to destination: 5 minutes

◆ **JMS Aster Plaza** JMS アステールプラザ

(4-17 Kako-machi, Naka-ku, Hiroshima Tel. 082-244-8000)

- ▶ Take the No.24 bus bound for Yoshijima Eigyocho (吉島営業所) and get off at Kako-machi (加古町). Walking time to destination: 2 minutes

◆ **Ueno Gakuen Hall** 上野学園ホール

(19-1 Hakushima-kita-machi, Naka-ku, Hiroshima Tel. 082-223-6367)

- ▶ Take the Astramline bound for Koiki Koen-mae (広域公園前) or Chorakuji (長楽寺) Station and get off at Hakushima (白島) Station. Walking time to destination: 3 minutes

◆ **Hiroshima Kokusai Kaigi-jo (International Conference Center Hiroshima), Phoenix Hall**  
広島国際会議場フェニックスホール

(1-5 Nakajima-cho, Naka-ku, Hiroshima Tel. 082-242-7777)

- ▶ Get on a Hiroshima Bus bound for Yoshijima and get off at Heiwa Kinenkoen (平和記念公園).
- ▶ Get off at the Chuden-mae (中電前) or Genbaku Dome-mae (原爆ドーム前) Streetcar Stops. Walking time to destination: 5 minutes

◆ **Hiroshima Club Quattro** 広島クラブクアトロ

(10-1 Hondori, Naka-ku, Hiroshima (Hiroshima PARCO Hon-kan 10F) Tel. 082-542-2280)

- ▶ Take a streetcar and get off at Hatchobori (八丁堀). Walking time to destination: 5 minutes

◆ **Hiroshima Green Arena** 広島グリーンアリーナ

(4-1 Moto-machi, Naka-ku, Hiroshima Tel. 082-228-1111)

- ▶ Take a streetcar and get off at Kamiya-cho-nishi (紙屋町西) or Kamiya-cho-higashi (紙屋町東). Walking time to destination: 5 minutes

◆ **Hiroshima Sun Plaza** 広島サンプラザ

(3-1-1 Shoko Center, Nishi-ku, Hiroshima Tel. 082-278-5000)

- ▶ Take a train or streetcar to Miyajima and get off at JR Shin-inokuchi (新井口) Station (JR Sanyo Line) or Shoko Center-iriguchi (商エセンター入り口) Streetcar Stops (Hiroden Miyajima Line). Walking time to destination: 5 minutes

◆ **Elisabeth University of Music** エリザベト音楽大学

(4-15 Nobori-machi, Naka-ku, Hiroshima Tel. 082-221-0918)

- ▶ Take a streetcar and get off at Kanayama-cho (銀山町) or Jogakuin-mae (女学院前). Walking time to destination: 10 minutes

◆ **Higashi Kumin Bunka Center** 東区民文化センター

(10-31 Higashi-kaniya-cho, Higashi-ku, Hiroshima Tel. 082-264-5551)

- ▶ From the Shinkansen Exit of the JR Hiroshima (広島) Station, walking time to destination is 10 minutes.

Please feel free to contact the International Exchange Lounge at 082-247-9715.

E-mail: [golounge@pcf.city.hiroshima.jp](mailto:golounge@pcf.city.hiroshima.jp)

Winter 2016-2017

◆ **Nishi Kumin Bunka Center** 西区民文化センター

(6-1 Yokogawa Shin-machi, Nishi-ku, Hiroshima Tel. 082-234-1960)

➤ From JR Yokogawa (横川) Station, walking time to destination is 5 minutes.

◆ **Saeki Kumin Bunka Center** 佐伯区民文化センター

(6-1-10 Itsukaichi-chuo, Saeki-ku, Hiroshima Tel. 082-921-7550)

➤ From Hiroshima Bus Center (Sogo Hiroshima, 3F), take a bus to Yakushigaoka-danchi (薬師が丘団地), Shikigaoka-danchi (四季が丘団地), Higashi-kannondai-danchi (東観音台団地) or Ajinadai-kita (阿品台北) and get off at Saeki-kumin Bunka Center-mae (佐伯区民文化センター前). Walking time to destination: 1 minutes

◆ **Aki Kumin Bunka Center** 安芸区民文化センター

(2-16 Funakoshi-minami 3-chome, Aki-ku, Hiroshima Tel. 082-824-1330)

➤ From JR Kaitaichi (海田市) Station (JR Sanyo Line), walking time to destination is 5 minutes.

◆ **Blue Live Hiroshima** ブルーライブ広島

(3-12-69 Ujina Kaigan, Minami-ku, Hiroshima Tel. 082-250-5522)

➤ Take a streetcar for Hiroshima-ko (No. 1, 3 or 5) and get off at Kaigan-dori (海岸通). Walking time to destination: 5 minutes

◆ **Gewand Halle** ゲバントホール

(Wako Palace21 5F, 2-1-13 Honkawa-cho, Naka-ku, Hiroshima Tel. 082-503-1711)

➤ Take a streetcar and get off at Honkawa-cho (本川町). Walking time to destination: 4 minutes

◆ **lifeone221 hall** lifeone221 ホール

(2-2-1 Itsukaichi-chuo, Saeki-ku, Hiroshima-shi Tel.082-922-0028)

➤ Take a bus from JR Itsukaichi (五日市) Station (north exit) and get off at Itsukaichi-chuo 2-chome (五日市中央二丁目). Walking time to destination: 5 minutes.

◆ **Memorial Cathedral for World Peace** 世界平和記念聖堂

(4-42 Nobori-cho, Naka-ku, Hiroshima-shi Tel.082-221-0621)

➤ From Kanayama-cho (銀山町) or Jogakuin-mae (女学院前) Streetcar Stop, walking time to destination is 10 minutes.

◆ **Hiroshima Nagarekawa Church** 広島流川協会

(8-30 Kami-nobori-cho, Naka-ku, Hiroshima Tel. 082-221-1813)

➤ From Jogakuin-mae (女学院前) or Shukkeien-mae (縮景園前) Streetcar Stop, walking time to destination is 5 minutes.

◆ **Hiroshima Ushita Church** 広島牛田教会

(2-7-34 Ushita-naka, Higashi-ku, Hiroshima Tel. 082-222-7727)

➤ From JR Hiroshima (広島) Station, walking time to destination is 25 minutes.

◆ **YAMAHA Music Salon** ヤマハミュージック広島店 サロン

(YAMAHA Music Hiroshima 3F, 1-1-18 Kamiya-cho, Naka-ku Tel. 082-244-3760)

➤ From Kamiya-cho-higashi (紙屋町東) Streetcar Stop, walking time to destination is 5 minutes.

◆ **Hatsukaichi Bunka Hall Sakurapia** はつかいち文化ホールさくらびあ

(1-11-1 Shimo-hera, Hatsukaichi City Tel. 0829-20-0111)

➤ Take a train on the JR Sanyo Line bound for Iwakuni and get off at JR Miyauchi Kushido (宮内串戸) Station. Walking time to destination: 15 minutes

➤ Take a streetcar on the Hiroden Miyajima Line and get off at Hatsukaichi Shiyakusho-mae (廿日市市役所前). Walking time to destination: 8 minutes

◆ **Kure City Bunka Hall** 呉市文化ホール

(3-10-1 Chuo, Kure City Tel. 0823-25-7878)

➤ From JR Kure (呉) Station (JR Kure Line), walking time to destination is 7 minutes.

Please feel free to contact the International Exchange Lounge at 082-247-9715.

E-mail: [golounge@pcf.city.hiroshima.jp](mailto:golounge@pcf.city.hiroshima.jp)

Winter 2016-2017



# Museums



A: Adults    U: University Students    H: High School Students  
J: Junior High School Students    E: Elementary School Students  
S: Seniors (65 years old and up - Identification showing your date of birth is required.)

◆ Generally, admission is allowed up to 30 min. prior to closing. ◆

## Hiroshima Museum of Art

Address: 3-2 Moto-machi, Naka-ku, Hiroshima City  
Tel: 082-223-2530  
Hours: 9:00am – 5:00pm  
Closed: Mondays (except during special exhibitions),  
Dec. 29 – Jan. 2  
URL: <http://www.hiroshima-museum.jp>

### Special Exhibition

#### ■ Mitsumasa Anno's Picture Book Telling Stories

Period: Sat., Oct. 22 – Sun., Dec. 11

Admission Fee:

A -¥1,200 (¥1,000), S-¥1,000,  
U&H-¥900 (¥700), J&E-¥500 (¥300)

✧ Advance ticket prices shown in ( ).

#### ■ "Fairest Flowers" by Pierre-Joseph Redoute

Period: Sat., Dec. 17, 2016 – Sun., Feb. 5, 2017

Admission Fee:

A -¥1,200 (¥1,000), S-¥1,000,  
U&H-¥900 (¥700), J&E-¥500 (¥300)

✧ Advance ticket prices shown in ( ).

### Concerts Related to the Exhibition

#### ★ Cembalo Concert

VENUE: Museum *Honkan* Hall (100 seats)

TIME: 2:00pm – 2:40pm

ADMISSION FEE: The day-of-museum  
ticket is required.

SCHEDULE:

① Fri., Dec. 23, 2016:

Cembalo, baroque cello & baroque  
violin concert

② Sun., Jan. 8, 2017:

Cembalo, baroque recorder concert

③ Sat., Jan. 28, 2017:

Cembalo concert

#### ★ Rika Masato Violin Concert

VENUE: Museum *Honkan* Hall (100 seats)

DATE: Sun., Jan. 22, 2017

TIME: 2:00pm – 3:30pm

ADMISSION FEE: The day-of-museum  
ticket is required.

## Collection Exhibition

### ■ Modern European Paintings

Period: Year-round

## Hiroshima City Museum of Contemporary Art

Address: 1-1 Hijiya Koen, Minami-ku, Hiroshima City  
Tel: 082-264-1121

Hours: 10:00am – 5:00pm

Closed: Mondays (except national holiday),  
Dec. 27 – Jan. 1

URL: <http://www.hcmca.cf.city.hiroshima.jp/>

★ Museum will be closed from Jan. 23 to  
Mar. 17, 2017.

### Special Exhibition

#### ■ The World is Strange! The Manga and Paintings of Tiger Tateishi and Yuichi Yokoyama

Period: Fri., Oct. 28, 2016 – Sun., Jan. 22, 2017

Admission Fee:

A-¥1,030 (¥820), U-¥720 (¥620),  
S&H-¥510 (¥410), J & under-Free

✧ Advance ticket prices shown in ( ).

## Collection Exhibition

Admission Fee: A-¥360 / U-¥270 / S&H-¥170  
/ J & under- Free

Holders of special exhibition admission tickets  
are also entitled to view the collection  
exhibition.

### ■ 2016 – III

#### Collection Highlights & the Special Display: "Listening"

Period: Sat., Oct. 8, 2016 – Sun., Jan. 22, 2017

### Open Program (Free Admission)

#### ■ Open Call for Design Ideas of "Hiroshima Brand" 2016

Period: Sat., Mar. 18 – Fri., Mar. 31, 2017

Please feel free to contact the International Exchange Lounge at 082-247-9715.

E-mail: [golounge@pcf.city.hiroshima.jp](mailto:golounge@pcf.city.hiroshima.jp)

Winter 2016-2017



**Video Art Program** (Free admission)■ **A Window to the World [The 54<sup>th</sup> Program]:****Gabrielle Le Bayon**

Period: Tue., Oct. 25, 2016 – Sun., Jan. 22, 2017

**Hiroshima MOCA Monthly Workshop**

✂ This is an art program in which the museum selects one particular material and visitors are free to make anything with it.

**Reservations are not required. You can join the workshop on the event day of.**

Date: Jan. 22 (Sun.) &amp; Mar. 26 (Sun.), 2017

Time: ① 10:00am – noon

② 2:00pm – 4:00pm

Participation Fee: Free

**Hiroshima Prefectural Art Museum**

Address: 2-22 Kaminobori-cho, Naka-ku, Hiroshima City

Tel: 082-221-6246

Hours: 9:00am – 5:00pm

✧ Open until 8:00pm on Fridays (Apr. – Oct.)

✧ Open until 7:00pm on Fridays (Nov. – Mar.)

Closed: Dec. 26 – Jan. 1

URL: <http://www.hpam.jp/>**Special Exhibitions**■ **M. C. Escher, the Master of Trompe-l'oeil: Mysterious World of Prints**

Period: Fri., Nov. 11 – Sun., Dec. 25

Admission Fee:

A-¥1,200 (¥1,000), U&amp;H-¥800 (¥600),

J&amp;E-¥400 (¥200)

✧ Advance ticket prices shown in ( )

■ **Nanzan Shimizu: The Master of Modern Metalwork from Hiroshima**

Period: Fri., Jan. 6 – Sun., Feb. 12, 2017

Admission Fee:

A-¥1,100 (¥900), U&amp;H-¥700 (¥500),

J&amp;E-¥400 (¥200)

✧ Advance ticket prices shown in ( )

**Collection Exhibition**

Admission Fee (all exhibitions):

A-¥510, U-¥310, H, &amp; under-Free

Holders of special exhibition admission tickets are also entitled to view the Museum's Collection exhibits.

■ **Hiroshima Prefectural Art Museum Best Selection Exhibit: The Cream of the Collection**

Period: Wed., Aug. 31 – Sun., Dec. 18

■ **Hiroshima Prefectural Art Museum Best Selection Exhibit: Part 2****Simultaneous Exhibit: Works Acquired in 2015**

Period: Thurs., Dec. 22, 2016 – Sun., Apr. 16, 2017

**Kure Municipal Museum of Art**Address: Irifuneyama Koen, Saiwai-cho, Kure City  
Tel: 0823-25-2007

Hours: 10:00am – 5:00pm

Closed: Tuesdays (except national holidays),  
Dec. 29 – Jan. 3URL: <http://kure-bi.jp/>**Special Exhibition**■ **Alfons Mucha**

Period: Sun., Dec. 11, 2016 – Sun., Feb. 12, 2017

Admission Fee: A-¥1,000 (¥800), U&amp;H-¥600 (¥500), H&amp;E-¥400 (¥300)

✧ Advance ticket prices shown in ( )

**Fukuyama Museum of Art**Address: 2-4-3 Nishi-machi, Fukuyama City  
Tel: 084-932-2345

Hours: 9:30am – 5:00pm

Closed: Mondays, New year holidays

HP: <http://www.city.fukuyama.hiroshima.jp/site/fukuyama-museum/>**Special Exhibition**■ **Japanese Swords**

Period: Sat., Nov. 12 – Sun., Dec. 18

Admission Fee: A&U-¥1,000,  
H & under-Free■ **Hoki Museum Exhibition**

Period: Sat., Jan. 21 – Sun., Mar. 12, 2017

Admission Fee: Not finalized

**Collection Exhibition**

Admission Fee (all exhibitions):

A&amp;U-¥300, H &amp; under-Free

■ **Autumn Exhibition****The World of Masaaki Noda:  
From New York to the World**

Period: Wed., Sept. 7 – Sun., Dec. 18

■ **Winter Exhibition****Yasumasa Morimura**

Period: Tue., Dec. 27, 2016 – Sun., Apr. 2, 2017



Please feel free to contact the International Exchange Lounge at 082-247-9715.

E-mail: [golounge@pcf.city.hiroshima.jp](mailto:golounge@pcf.city.hiroshima.jp)

Winter 2016-2017



**Onomichi City Museum of Art**

Address: 17-19 Nishitsuchido-cho, Onomichi City  
(Inside Senkoji Park)

Tel: 0848-23-2281

Hours: 9:00am – 5:00pm

Closed: Mondays except national holidays,  
Dec. 29 – Jan. 3

**Special Exhibition****■ Kanda Nissho**

Period: Sat., Nov. 19, 2016 – Sun., Jan. 15,  
2017

Admission Fee: A-¥800, U&H-¥550,  
J & under-Free

**Okuda Genso Sayume Art Museum**

Address: 453-6 Higashi Sakeya-machi, Miyoshi City

Tel: 0824-65-0010

Hours: 9:30am – 5:00pm

Open until 9:00pm on Dec. 14

Closed: Dec. 15, Dec. 30 – Jan. 1

URL: <http://www.genso-sayume.jp>

**Special Exhibition****■ Magical Art Museum:****Illusion of Light and Shadow**

Period: Mon., Nov. 14, 2016 – Mon., Jan. 9,  
2017

Admission Fee:

A-¥1,000 (900), Pair tickets- ¥1,800

U&H-¥500 (¥400), J & under-Free

✧ Advance ticket prices shown in ( ).

**NTT CRED Hall**

Address: Pacela 11F, 6-78 Moto-machi, Naka-ku,  
Hiroshima City

Tel: 082-502-3430

✧ Inquiries about the exhibition:

RCC 082-222-1133 (Mon. – Fri., 10am –  
5pm)

URL: Official Website:

<http://www.godzilla-tokusatsu.com/>

**Special Exhibition****■ Godzilla in Hiroshima**

Period: Fri., Dec. 23, 2016 – Mon., Jan. 9, 2017

Hours: 10:00am – 5:00pm

✧ Entry allowed up to 4:30pm.

Admission Fee:

High school students and up-

¥1,200 (¥1,000)

Elementary school students and under-

¥700 (¥500)

✧ Advance ticket prices shown in ( ).



Please feel free to contact the International Exchange Lounge at 082-247-9715.

E-mail: [golounge@pcf.city.hiroshima.jp](mailto:golounge@pcf.city.hiroshima.jp)

Winter 2016-2017

# Hiroshima Dragonflies

## 2016 – 2017 B2 League

🌟 Hiroshima Dragonflies is a professional basketball team in Hiroshima.

## GAME SCHEDULE **Date / Starting Time / Game / Venue**

✧ Only the games scheduled to be held in Hiroshima are listed below. For away games, please check the Hiroshima Dragonflies' official website.

**★ DECEMBER**

Sat., December 10 / 2:00pm / vs. Bambitious Nara / Hiroshima Sun Plaza

Sun., December 11 / 1:30pm / vs. Bambitious Nara / Hiroshima Sun Plaza

Fri, December 30 / 2:00pm / vs. Tokyo Excellence / Hiroshima Sun Plaza

Sat., December 31 / 1:30pm / vs. Tokyo Excellence / Hiroshima Sun Plaza

★ JANUARY

Sat., January 28 / Not finalized / vs. F Eagles Nagoya / Kure City Sogo Taiikukan

Sun., January 29 / Not finalized / vs. F Eagles Nagoya / Kure City Sogo Taiikukan

## ★ FEBRUARY

Sat., February 11 / Not finalized / vs. Nishinomiya Storks / Hiroshima Sun Plaza

Sun., February 12 / Not finalized / vs. Nishinomiya Storks / Hiroshima Sun Plaza

Sat., February 25 / Not finalized / vs. Earthfriends Tokyo Z / Hiroshima Sun Plaza

Sun., February 26 / Not finalized / vs. Earthfriends Tokyo Z / Hiroshima Sun Plaza

**★ MARCH**

Sat., March 11 / Not finalized / vs. Iwate Big Bulls / Hiroshima Sun Plaza

Sun., March 12 / Not finalized / vs. Iwate Big Bulls / Hiroshima Sun Plaza

Fri, March 17 / Not finalized / vs. Kumamoto Volters / Hiroshima Sun Plaza

Sun., March 18 / Not finalized / vs. Kumamoto Volters / Hiroshima Sun Plaza

★ **APRIL**

Sat., April 8 / Not finalized / vs. Kagoshima Rebnise / Hiroshima Sun Plaza

Sun., April 9 / Not finalized / vs. Kagoshima Rebnise / Hiroshima Sun Plaza

Sat., April 22 / Not finalized / vs. Kagawa Five Arrows / Hiroshima Sun Plaza

Sun., April 23 / Not finalized / vs. Kaqawa Five Arrows / Hiroshima Sun Plaza

**★ MAY**

Sat., May 6 / Not finalized / vs. Ehime Orange Vikings / Hiroshima Sun Plaza

Sun., May 7/ Not finalized / vs. Ehime Orange Vikings / Hiroshima Sun Plaza

## TICKETS (At the Door)

- ◆ Reserved seats: ¥3,700 - ¥16,700
- ◆ Unreserved seats (1<sup>st</sup> floor seats): Adults-¥3,200    High school students-¥2,600  
    Junior high & Elementary school students-¥2,100
- ◆ Unreserved seats (2<sup>nd</sup> floor seats): Adults-¥2,600    High school students-¥2,100  
    Junior high & Elementary school students-¥1,500

Please feel free to contact the International Exchange Lounge at 082-247-9715.

E-mail: golounge@pcf.city.hiroshima.jp

Winter 2016-2017

**ACCESS**

- ◆ **Hiroshima Sun Plaza** (1-1 Shoko Center 3-chome, Nishi-ku, Hiroshima City)  
From JR Shin Inokuchi (新井口) Station or Shoko Center Iriguchi (商エセンター入口) Streetcar Stop, walking time to destination is 5 minutes.
- ◆ **Higashi Hiroshima City Undo Koen Taiikukan** (67-1 Taguchi, Saijo-cho, Higashi Hiroshima City)  
Take a bus from JR Saijo (西条) or JR Higashi Hiroshima (東広島) Station (JR Sanyo Line).
- ◆ **Rose Arena** (2-2 Midori-machi, Fukuyama City)  
Take a bus from JR Fukuyama (福山) Station (JR Sanyo Line).
- ◆ **Kure City Sogo Taiikukan** (7-1 Hiro Ohshingai 1-chome, Kure City)  
From JR Hiro (広島) Station (JR Kure Line), walking time to destination is 5 minutes.

**TICKET OFFICES**

- ◆ Hiroshima Dragonflies Club Shop (Hiroshima Marina Hop / Tel. 082-297-6825 / 10:00am – 8:00pm)  
(The club shop sells advanced tickets only.)
- ◆ Ticket PIA
- ◆ Convenience Stores (FamilyMart, Seven Eleven, CircleKSunkus and Lawson)
- ◆ Hiroshima Power House (Basketball pro Shop)
- ◆ Taiikusha (Sporting-goods store)

**INQUIRIES**

- ◆ Hiroshima Dragonflies    Tel. 082-297-6825 (Mon. – Fri., 10:00am – 5:30pm)  
HP: <http://hiroshimadragonflies.com>
- ◆ NBL (National Basketball League of Japan) Official HP: <http://www.nbl.or.jp>



Please feel free to contact the International Exchange Lounge at 082-247-9715.

E-mail: [golounge@pcf.city.hiroshima.jp](mailto:golounge@pcf.city.hiroshima.jp)

Winter 2016-2017

# Seasonal Event Information

## 2016-2017 winter

★ Event schedules are subject to change.

Please contact event organizers before you go.



### Events Held in Hiroshima City

**Every Wednesday until December 28, 2016 ★ December 7, 14, 21 & 28**

#### Hiroshima Kagura ひろしまけんみんぶんか センター「広島神楽」定期公演

**TIME:** 7:00pm – 8:45pm (The venue will open at 6:00pm.)

**VENUE:** Hiroshima Kenmin Bunka Center, Ote-machi, Naka-ku (located near Hondori Shopping Street)

**ACCESS:** From Kamiya-cho-nishi or Hondori Streetcar Stops, walking time to destination is 3 minutes.

**TICKETS:** ¥1,000 ◇ All non-reserved seats

◇ Tickets will be sold from 5:00pm on the performance date at the center.

There are no advance tickets.

**INQUIRIES:** Hiroshima Kenmin Bunka Center 082-245-2311

**Thurs., November 17, 2016 – Tue., January 3, 2017**

#### Hiroshima Dreamination 2016 ひろしまドリミネーション 2016

**TIME:** 5:30pm – 10:30pm

**PLACE:** Heiwa-odori and shopping streets in the center of Hiroshima City

**ACCESS:** Take a streetcar or bus for the center of Hiroshima City.

**INQUIRIES:** Hiroshima Light-up Project Executive Committee (inside Rest House, Peace Memorial Park)

082-247-6805 HP: <http://www.dreamination.com/>

▣ Trees along Heiwa-odori and shopping streets will be decorated with various colored lights.

**Sun., December 4 & 18, 2016; Sun., January 15, 2017**

#### Hiroshima Minato Marché ひろしまみなとマルシェ

**TIME:** 9:00am – 3:00pm

**PLACE:** Open Space between East and West Terminal of Hiroshima Port, Minami-ku

**ACCESS:** Take the No. 1, 3 or 5 streetcar bound for Hiroshima Port and get off at the last stop, Hiroshima Port.

**INQUIRIES:** Hiroshima Minato Marché Office 082-255-6646

▣ You can buy and taste locally-grown fresh vegetables and other food products at the marché.

**Sun., January 22**

#### Emperor's Cup: The 22<sup>nd</sup> Inter Prefectural Men's Ekiden Hiroshima

**(Relay Road Race)** てんのうはい だい かいぜんこく と どう ふ けんたいこうだん し えきでんきょうそうたいかい  
天皇盃 第22回全国都道府県対抗男子駅伝競走大会

**TIME:** Starting at 12:30pm from Hiroshima Peace Memorial Park

**PLACE:** Start & Goal = Hiroshima Peace Memorial Park, Naka-ku

**ACCESS:** Get off at Genbaku Dome-mae Streetcar Stop.

**INQUIRIES:** Executive Committee 082-292-0601

Please feel free to contact the International Exchange Lounge at 082-247-9715.

E-mail: [golounge@pcf.city.hiroshima.jp](mailto:golounge@pcf.city.hiroshima.jp)

Winter 2016-2017

**Sun., March 19****"Sweets" Marathon in Hiroshima**ぜんこく ひろしま  
全国 スイーツマラソン in 広島**TIME:** 8:00am – 5:00pm**PLACE:** Hiroshima Minato Koen (park), Minami-ku**ACCESS:** Take the No. 1, 3 or 5 streetcar bound for Hiroshima Port and get off at the last stop, Hiroshima Port.**PARTICIPATION FEE:** High school students and up-¥6,000  
Junior high and elementary school students-¥3,000**HOW TO APPLY:** Applications are accepted online.(check the HP (<http://www.sweets-marathon.jp>) for more information.)

Deadline for application – Mon., Feb. 20, 2017

✧ In the event that all application slots are filled, applications will be closed before Feb. 20.

**INQUIRIES:** Sweets Marathon Office 03-6848-7284 (Mon. – Fri., 10:00am – 6:00pm)HP: <http://www.sweets-marathon.jp>

- ☐ This is an event in which you can enjoy both running a marathon and eating sweets. "Sweets stations" will be set up instead of water stations on the marathon course. You can eat as much as you like of various kinds of small-sized sweets at each station. Sweets kiosks and Hiroshima Minato Marché will also be set up.

**Events Held on Miyajima****Thurs., November 24 – Sun., December 18****Itsukushima Shrine: World Heritage Registration 20<sup>th</sup> Anniversary****Exhibition of Itsukushima Shrine Treasures**いつくしまじんじゃせかい いさんとうろく しゅうねんきねん ほうもつめいひんでん  
厳島神社 世界遺産登録20周年記念 宝物名品展**PLACE:** The Gallery of Itsukushima Shrine Treasures, Miyajima**ACCESS:** Get off at JR Miyajima-guchi Station (JR Sanyo Line) or Miyajima Streetcar Stop (Hiroden Streetcar Miyajima Line), then take a ferry to Miyajima.**ADMISSION FEE:** Adults & University students-¥1,000 High school students-¥500  
Junior high & Elementary school students-¥300**INQUIRIES:** Miyajima Kanko Kyokai (Tourist Association) 0829-44-2011

- ☐ Itsukushima Shrine's fine arts and crafts which are designated as national treasures and important cultural properties will be exhibited in commemoration of the 20<sup>th</sup> anniversary of the registration on the world heritage list.

**Tue., December 6****Itsukushima Shrine: World Heritage Registration 20<sup>th</sup> Anniversary****Bugaku Performance (musical court dance)**ぶがく  
舞楽いつくしまじんじゃせかい いさんとうろく しゅうねんきねん  
厳島神社 世界遺産登録20周年記念**TIME:** Afternoon**PLACE:** Itsukushima Shrine, Miyajima**ACCESS:** Get off at JR Miyajima-guchi Station (JR Sanyo Line) or Miyajima Streetcar Stop (Hiroden Streetcar Miyajima Line), then take a ferry to Miyajima.**FEE:** Admission fee for Itsukushima Shrine

|   |  |   |
|---|--|---|
| ( | Adults & University students-¥300, High school students-¥200 | ) |
|   | Junior high & Elementary school students-¥100                |   |

**INQUIRIES:** Miyajima Kanko Kyokai (Tourist Association) 0829-44-2011

Please feel free to contact the International Exchange Lounge at 082-247-9715.

E-mail: [golounge@pcf.city.hiroshima.jp](mailto:golounge@pcf.city.hiroshima.jp)

Winter 2016-2017

**Fri., December 23****Tencho-sai Festival** てんちょうさい 天長祭**TIME:** From 9:30am onward**PLACE:** Itsukushima Shrine, Miyajima**ACCESS:** Get off at JR Miyajima-guchi Station (JR Sanyo Line) or Miyajima (Hiroden Streetcar Miyajima Line), then take a ferry to Miyajima.**FEE:** Admission fee for Itsukushima Shrine

|  |
|--|
| {<br>Adults & University students-¥300, High school students-¥200<br>Junior high & Elementary school students-¥100         } |
|  |

**INQUIRIES:** Itsukushima Shrine 0829-44-2020

☐ *Tencho-sai* is a festival to celebrate Emperor Akihito's birthday. *Bugaku*, musical court dancing, will be performed after the ritual.

**Sat., December 31****Chinka-sai Festival** ちんかさい 鎮火祭**TIME:** From 6:00pm onward**PLACE:** Mikasa-hama Beach, Miyajima**ACCESS:** Get off at JR Miyajima-guchi Station (JR Sanyo Line) or Miyajima (Hiroden Streetcar Miyajima Line), then take a ferry to Miyajima.**ADMISSION FEE:** Free**INQUIRIES:** Itsukushima Shrine 0829-44-2020

☐ This dynamic festival is held every year on New Year's Eve and people with hundreds of large and small pine torches pray for Miyajima to be protected from fires.

**January 1 (Sun.), 2 (Mon.), 3 (Tue.) & 5 (Thurs.)****New Year's Ceremonies & Bugaku Performances on Miyajima**
みやじまはつもうで ぶがく  
 宮島 初詣 & 舞楽
◎ **Sun., Jan. 1: Goshin-i-kenjo-shiki Ceremony & Saitan-sai Festival****TIME:** *Goshin-i-kenjo-shiki* Ceremony – From midnight onward*Saitan-sai* Festival – From 5:00am onward ♦ After the ritual, *bugaku* will be performed.◎ **Mon., Jan. 2: Futsuka-sai Festival****TIME:** Ritual – From 9:00am onward / *Noh* performance – From 11:00am onward*Bugaku* performance – From 1:00pm onward◎ **Tue., Jan. 3: Genshi-sai Festival****TIME:** Ritual – From 9:00am onward / *Bugaku* performance – From 1:00pm onward◎ **Thurs., Jan. 5: Chikyu-sai Festival****TIME:** Ritual – From 5:30am onward ♦ After the ritual, *bugaku* will be performed.**PLACE:** Itsukushima Shrine, Miyajima**ACCESS:** Get off at JR Miyajima-guchi Station (JR Sanyo Line) or Miyajima Streetcar Stop (Hiroden Streetcar Miyajima Line), then take a ferry to Miyajima.**FEE:** Admission fee for Itsukushima Shrine

|  |
|--|
| {<br>Adults & University students-¥300, High school students-¥200<br>Junior high & Elementary school students-¥100         } |
|  |

**INQUIRIES:** Itsukushima Shrine 0829-44-2020

☐ *Bugaku* is a musical court dance that was brought to Miyajima from Kyoto by Taira-no Kiyomori.

*Bugaku* has been preserved at Itsukushima Shrine for 800 years and is an important cultural asset.



Please feel free to contact the international English Lounge at 082-247-9715.

E-mail: [golounge@pcf.city.hiroshima.jp](mailto:golounge@pcf.city.hiroshima.jp)

Winter 2016-2017



**Fri., January 20****Momote-sai Festival** ももてさい  
百手祭**TIME:** From 11:00am onward**PLACE:** Ohmoto Shrine, Miyajima**ACCESS:** Get off at JR Miyajima-guchi Station (JR Sanyo Line) or Miyajima Streetcar Stop (Hiroden Streetcar Miyajima Line), then take a ferry to Miyajima.**INQUIRIES:** Itsukushima Shrine 0829-44-2020

☐ This is a *shinto* ceremony for the first use of a bow and arrow in the new year, wishing for a bright and happy 12 months.

**Fri., February 3****Setsubun-sai Festival in Miyajima** せつぶんさい  
節分祭**TIME:** From 11:00am onward**PLACE:** Daishoin Temple, Miyajima**ACCESS:** Get off at JR Miyajima-guchi Station (JR Sanyo Line) or Miyajima Streetcar Stop (Hiroden Streetcar Miyajima Line), then take a ferry to Miyajima.**INQUIRIES:** Daishoin Temple 0829-44-0111

☐ There will be a ritual & *mame-maki* (bean-throwing) for good luck.

**Fri., February 3****Hoshi Matsuri at Daiganji Temple in Miyajima (Ritual)** ほしまつ  
星祭り**TIME:** From 6:30pm onward**PLACE:** Daiganji Temple, Miyajima**ACCESS:** Get off at JR Miyajima-guchi Station (JR Sanyo Line) or Miyajima Streetcar Stop (Hiroden Streetcar Miyajima Line), then take a ferry to Miyajima.**INQUIRIES:** Daiganji Temple 0829-44-0179**Sun., February 5****Ju-san-mairi Kodomo Mame-maki (Bean-throwing)** じゅうさんまい こどもまめまき  
十三参り 子供豆まき**TIME:** From 11:00am onward**PLACE:** Daishoin Temple, Miyajima**ACCESS:** Get off at JR Miyajima-guchi Station (JR Sanyo Line) or the Miyajima Streetcar Stop (Hiroden Streetcar Miyajima Line), then take a ferry to Miyajima.**INQUIRIES:** Daishoin Temple 0829-44-0111

☐ 12-year-old-children who were born in the year of the Rooster (which is also this year in the Chinese zodiac) will throw beans in a "*Mame-maki*" ritual to pray for happiness throughout the year.

**Sat., February 11 & Sun., February 12****The 33<sup>rd</sup> Miyajima Oyster Festival** だい かいみやじま まつ  
第33回 宮島かき祭り**TIME:** 10:00am – 3:00pm**PLACE:** In front of Miyajima Pier, Miyajima-cho, Hatsukaichi City**ACCESS:** Get off at JR Miyajima-guchi Station (JR Sanyo Line) or the Miyajima Streetcar Stop (Hiroden Streetcar Miyajima Line), then take a ferry to Miyajima.**INQUIRIES:** Miyajima Kanko Kyokai (Tourist Association) 0829-44-2011

☐ Stage performances such as *taiko* (traditional Japanese drums) will be held at the venue.

A ritual and *kagami-biraki* (cutting a *kagami-mochi*, a traditional Japanese new year's ornament consisting of two round rice cakes) will also be held on the 11<sup>th</sup>.



Please feel free to contact the International Exchange Lounge at 082-247-9715.

E-mail: [golounge@pcf.city.hiroshima.jp](mailto:golounge@pcf.city.hiroshima.jp)

Winter 2016-2017

## Events Held Outside of Hiroshima City

### Sat., Sun. & national holidays

#### Sake Brewery Opening ようこそ 醸 華 町 西 条 じょう か まちさいじょう

**PLACE:** Sake Breweries, Higashihiroshima City

**ACCESS:** Get off at JR Saijo Station (JR Sanyo Line).

**FEE:** Free

**INQUIRIES:** Saijo Sakagura-dori Kanko Annai-jo

Tel. & Fax 082-421-2511 (10:00am – 4:00pm, closed on Mondays)

☐ Some sake breweries open to the public on Sat., Sun. & national holidays. Signboards with the words “ようこそ 醸 華 町 西 条” (“Yokoso Jokamachi Saijo”) will be placed in front of the opened breweries.

### Sat., November 19, 2016 – Mon., January 9, 2017

#### Winter Illumination at Bihoku Kyuryo Koen 2016

こくえい びほくきゅうりょうこうえん  
国営備北丘陵公園 ウィンタイルミネーション 2016

**OPEN HOURS:** Winter Illumination: 5:30pm – 9:00pm (entry allowed up to 8:00pm)

\*Daytime park hours: 9:30am – 4:30pm (Nov. – Feb.)

**PLACE:** Kokuei Bihoku Kyuryo Koen (Park), Shobara City

**ACCESS:** ① From JR Nanatsuka Station (JR Geibi Line), walking time to destination is 20 minutes.

② From JR Bingo Shobara Station (JR Geibi Line), driving time to destination is 10 minutes.

③ From Shobara I.C. on the Chugoku Expressway, driving time to destination is 10 minutes.

④ From Miyoshi Higashi I.C. on the Matsue Expressway, driving time to destination is 15 minutes.

**ADMISSION FEE:** High school students and up-¥410, Junior & Elementary school students-¥80, Preschoolers – Free, 65 years old and up-¥210 (Identification showing your date of birth is required.)

**CLOSED:** Dec. 31 & Jan. 1

**INQUIRIES:** Bihoku Koen Kanri Center 0824-72-7000

☐ Various events will be held during the illumination period.

### December 9 (Fri.), 10 (Sat.), 11 (Sun.) & 12 (Mon.), 2016

### January 13 (Fri.), 14 (Sat.), 15 (Sun.) & 16 (Mon.), 2017

#### Iroha Antique Market おのみちだいこつとうさい 尾道大骨董祭 (いろは骨董祭) こつとうさい

**TIME:** 8:00am – 4:00pm ✧ 8:00am – noon on Monday

**PLACE:** Tennen Onsen Onomichi Fureai no Sato (spa facilities), Mitsugi-cho, Onomichi City

**ACCESS:** ① From JR Shin-Onomichi Station (JR Sanyo Shinkansen Line), driving time by taxi to destination is 25 minutes.

② From Onomichi-kita I.C. on the Chugoku Yamanami Expressway, driving time to destination is 10 minutes.

③ Take a free shuttle bus to the spa from JR Higashi Onomichi Station (JR Sanyo Line).

Departure Time (one round service a day)

• JR Higashi Onomichi Station: 8:55am

• Spa: 3:10pm

**INQUIRIES:** Iroha Antique Market Office 090-3155-8229



Please feel free to contact the International Exchange Lounge at 082-247-9715.

E-mail: [golounge@pcf.city.hiroshima.jp](mailto:golounge@pcf.city.hiroshima.jp)

Winter 2016-2017

**Sat., December 10, 2016 & Tue., January 10, 2017****Sakagura Walking Tour (Free)** さかぐら 酒蔵のまち てくてくガイド**TIME:** Tour will start on an as-needed basis between 10:00am and 11:00am.**MEETING PLACE:** Saijo Sakagura-dori Kanko Annai-jo (Tourist Information Center), Higashihiroshima City**ACCESS:** Get off at JR Saijo Station (JR Sanyo Line).**PARTICIPATION FEE:** Free**INQUIRIES:** Saijo Sakagura-dori Kanko Annai-jo Tel. & Fax 082-421-2511

- ☐ A volunteer guide will show you Sakagura-dori (Sake Brewery Street). During the tour you will be able to taste sake and the purified water that is used to make it.
- ☐ A regular guided tour (fee-based) is also held every day except on the 10<sup>th</sup>. An English speaking guide is available. Please contact the Saijo Sakagura-dori Tourist Information Center in advance.

**Tue., December 20, 2016 & Fri., January 20, 2017****Hatsuka-no-ichi Market** はつか いち 廿日の市**TIME:** 8:30am – 10:30am**PLACE:** Shimin Plaza (in front of Hatsukaichi City Hall), Hatsukaichi City**ACCESS:** From Hatsukaichi Shiyakusho-mae (Hiroden Streetcar Miyajima Line), walking time to destination is 10 minutes.**INQUIRIES:** Hatsukaichi Kanko Kyokai (Tourist Association) 0829-31-5656**Sun., January 8****Saito-goma (Fire Walking Ceremony)** さいとう ごま ひわたり しんじ 柴燈護摩 (火渡り神事)**TIME:** 11:00am – 12:30pm**PLACE:** Saikokuji Temple, Onomichi City**ACCESS:** ① From JR Onomichi Station (JR Sanyo Line), walking time to destination is 20 minutes.

② From JR Onomichi Station (JR Sanyo Line), take a bus going east and get off at Saikokuji-shita. Walking time to destination: 5 minutes

**FEE FOR FIRE WALKING:** ¥1,500 (Fee for a hachimaki (headband) and a good-luck charm is included.)**INQUIRIES:** Saikokuji Temple 0848-37-0321**Wed., January 11****Oyumi-shinji (Ritual) at Momoshima Hachiman Shrine** ゆみしんじ お弓神事**TIME:** 9:30am – 11:00am**PLACE:** Momoshima Hachiman Shrine, Momoshima-cho, Onomichi City**ACCESS:** Get off at JR Onomichi Station (JR Sanyo Line) and walk to the pier. Then get on a ferry to Tsuneishi and get off at Fukuda. Walking time to destination: 10 minutes**INQUIRIES:** Onomichi City Hall, Momoshima Branch 0848-73-2701

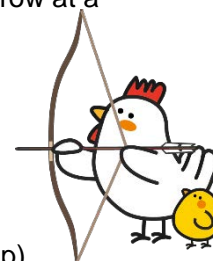
- ☐ This is a ritual to pray for good health and fortune throughout the year by shooting an arrow at a target.

**Sun., January 29****Let's Play in the Snow in Kitahiroshima-cho!**ひろしま きた い 広島の北へ行って、ゆき あそ雪で遊びましょう！**WHO:** Foreign people who live in Hiroshima Prefecture (elementary school students and up)**PLCAE:** Miwa Higashi Bunka Center, Kitahiroshima-cho

✧ You will go to the center by bus from Hiroshima City (see below).

**DEPARTURE TIME & PLACE:**

- ◆ 7:45am at Hiroshima Kokusai Center (Naka-machi, Naka-ku, Hiroshima City)



Please feel free to contact the International Exchange Lounge at 082-247-9715.

E-mail: [golounge@pcf.city.hiroshima.jp](mailto:golounge@pcf.city.hiroshima.jp)

Winter 2016-2017

- ◆ 8:00am at JR Hiroshima Station, *Shinkansen* Exit (Matsubara-cho, Minami-ku, Hiroshima City)

**PARTICIPATION FEE:** ¥1,000

**HOW TO APPLY:** Send a prescribed application form to the *Hiroshima Kokusai* Center (Hiroshima International Center; Hiroshima Crystal Plaza 6F, 8-18 Naka-machi, Naka-ku, Hiroshima City 730-0037) by Mon., December 19. 45 people will be selected at random by a drawing of names. ◇ A participants who can show his/her home country's culture such as cooking and dance will be preferentially selected.

**INQUIRIES:** *Hiroshima Kokusai* Center Tel. 082-541-3777 Fax. 082-243-2001  
E-mail: hic20@hiroshima-ic.or.jp

<NOTIS>

Cancellation charge (¥1,000) will be required If you cancel the participation after Mon., January 23.

**Fri., February 3**

**Setsubun-e at Saikoji Temple**

さいこくじ せつぶんえ  
西國寺 節 分会

**TIME:** 11:00am – 12:30pm

**PLACE:** Saikokuji Temple, Onomichi City

**ACCESS:** ① From JR Onomichi Station (JR Sanyo Line), walking time to destination is 20 minutes.

② From JR Onomichi Station (JR Sanyo Line), take a bus going east and get off at Saikokuji-shita. Walking time to destination: 5 minutes

**INQUIRIES:** Saikokuji Temple 0848-37-0321

▣ There will be a ritual, *taiko* (traditional Japanese drum) performance and *mame-maki* (bean-throwing) for good luck.

**Fri., February 3**

**Setsubun-sai at Kibitsu-hiko Shrine (Ikkyu Shrine)**

きびつひこじんじや いっきゅうじんじや せつぶん  
吉備津彦神社 (一宮神社) 節分

さい  
祭

**TIME:** Ritual: From 7:30pm onward

*Mame-maki* (bean-throwing): 8:00pm – 8:30pm

**PLACE:** Kibitsu-hiko Shrine (Ikkyu Shrine), Onomichi City

**ACCESS:** From JR Onomichi Station (JR Sanyo Line), walking time to destination is 10 minutes.

**INQUIRIES:** Kibitsu-hiko Shrine 0848-22-5545

**Sun., April 16** ◆ A pre-event will be held on April 15.

**Grand Tour Setouchi 2017 (cycling event)** グラン・ツール・セとうち 2017

**SCHEDULE:** Apr. 15: Pre-event & Registration (10:00am – 5:00pm)

Apr. 16: Opening Ceremony & Cycling

**PLACE:** *Setouchi Shimanami Kaido*, Onomichi City

**START & GOAL:**

- ◆ 140km, 110km & 70km course: *Mukaishima Undo Koen* (park), Onomichi City

Schedule: Opening ceremony: From 7:00am onward

Start: 7:30am / Finish: 5:00pm

- ◆ 40km course: *Manda Hakkou Company*, Onomichi City

Schedule: Opening ceremony: From 9:30am onward

Start: 10:00am / Finish: 4:00pm

**ACCESS:**

***Mukaishima Undo Koen:*** From Mukaishima I.C. on the Shimanamikaido Expressway, driving time to destination is 5 minutes.

***Manda Hakkou Company:*** From Innoshima-kita I.C. on the Shimanamikaido Expressway, driving time to destination is 10 minutes.

**HOW TO PARTICIPATE:**

Enrollment will be accepted online from Sat., December 17, 2016 to Sun., February 26, 2017.

◇ Enrollment will be closed when all 2,300 spots are full.

**ELIGIBILITY FOR PARTICIPATION:**

Please feel free to contact the International Exchange Lounge at 082-247-9715.

E-mail: golounge@pcf.city.hiroshima.jp

Winter 2016-2017

- ◎ Those who are elementary school students and up.
- ◎ Those who have the physical strength to complete the full distance of each course within the time limit.
- ◎ Those who agree to abide by event rules.
- ◎ Those who finish registration on April 15. ☒ *Registration will NOT be accepted after April 15.*

PLACE: Paul Bell Square, in front of JR Onomichi Station

TIME: 10:00am – 5:00pm

#### COURSE & PARTICIPATION FEE:

- ◎ Shimanami Master Course (140km): ¥9,000      ♦ 800 people will be accepted.
- ◎ Shimanami Middle Course (110km): ¥8,000      ♦ 600 people will be accepted.
- ◎ Shimanami Short Course (70km): ¥7,000      ♦ 600 people will be accepted.
- ◎ Shimanami Happy Course (40km): ¥5,500      ♦ 300 people will be accepted.

**INQUIRIES:** Grand Tour Setouchi Office (inside Hiroshima TV)

082-249-1218 (Mon. – Fri., 10:00am – 6:00pm) E-mail: cycle@htv.jp

HP: <http://www.htv.jp/grandtour2017/>

- ▣ Setouchi Shimanami Kaido is the expressway connecting six islands in the Seto Inland Sea with seven bridges between Onomichi City (Hiroshima Pref.) and Imabari City (Ehime Pref.).
- ▣ There will be aid stations where drinks and light meals are available.

## Events Held in Yamaguchi Prefecture

**Sun., January 1**

### New Year's First Shot by Iwakuni-han Teppo-tai (Firearm-equipped Army of the Iwakuni Clan)

いわくにはんてっぽうたいはつはな  
岩国藩 鉄砲隊 初放し

**TIME:** From 1:30pm onward

**PLACE:** Riverside under the Kintaikyo Bridge, Iwakuni City, Yamaguchi Prefecture

**ACCESS:** Take a bus from JR Iwakuni Station (JR Sanyo Line) and get off at Kintaikyo.

**INQUIRIES:** Kanko Shinko Ka, Iwakuni City Hall 0827-29-5116

- ▣ *Teppo-tai* members dressed up as samurai warriors will shoot *hinawaju* (arquebus) guns to pray for peace and tranquility throughout the year.



Winter 2016-2017



# Municipal Facilities



## Facilities



(Address / Telephone / Open Hours / Closed / Admission Fee / URL)

Admission is generally allowed up to 30 min. prior to closing.



## Hiroshima City Forest Park & Insectarium

(173 Fujigamaru, Fukuda-cho, Higashi-ku 732-0036 / Forest Park: 899-8241, Insectarium: 899-8964 / Forest Park: 9:00am - 4:30pm; Insectarium: 9:00am - 4:30pm / Closed: Forest Park - Wednesdays & December 29 - January 3; Insectarium - Wednesdays & December 28 - January 4 / Admission Fees for the Insectarium: Adults-¥510, Seniors & High school students-¥170, Junior high & Elementary school students-Free (Free admission for high school students on Saturdays (except on national holidays and during school holidays)) / Forest Park: <http://www.daiichibs-shitei.com/forest/> Insectarium: <http://www.hiro-kon.jp/>)

## Events at the Forest Park

-  **Make a Menko and Decorate a Christmas Tree and Wreath with Menkos** / Sat., Dec. 3 /  
 ① 10:00am - noon    ② 1:00pm - 3:00pm /  
*Kyukei-jo, Shibafu Hiroba* / Fee: Free  
 ✧ The first 100 people can participate on the day of.  
 ☺ *Menko* is a thick card which is a classic children's game in Japan.
-  **Christmas Presents for Children** / Sun., Dec. 18 & Fri., Dec. 23 / For elementary school students and under  
 ✧ Drawing tickets will be distributed from 1:00pm at *Kanri Center* for the first 200 people (100 girls & 100 boys) each day. Lot drawing and prize distribution will start from 2:00pm at *Chuo Hiroba*.

## Events at the Insectarium


-  **Christmas at the Insectarium: Make a Candle & Crayon with Beeswax** / Dec. 3 (Sat.), 4 (Sun.), 23 (Fri.) & 24 (Sat.) / 11:00am - noon / Fee: ¥100 for materials and admission fee for the Insectarium ✧ The first 30 people can participate each day.
-  **Saturday Insect Lecture** / 1:30pm - 2:30pm
  - ① **Making a Beetle and Stag Beetle Specimen** / Sat., Dec. 17  
 ✧ Advance reservations are required.
  - ② **Owning Beetle** / Sat., Mar. 4, 2017  
 ✧ Advance reservations are required.

## The Hiroshima Botanical Garden

(3-495 Kurashige, Saeki-ku 731-5156 / 922-3600 / 9:00am - 4:30pm / Closed on Fridays (except Dec. 23) & December 29 - January 3 / Adults-¥510, Seniors & High school students-¥170, Junior high and Elementary school students-Free (Free admission for high school students on Saturdays (except on national holidays and during school holidays)) / <http://www.hiroshima-bot.jp/>)

<Exhibitions> Exhibitions will close at 3:30pm on their last day.

## Tenji Shiryō-shitsu

 **Special Exhibition: Plants in Miyajima** / Sat., Oct. 1 - Fri., Dec. 23

## <Events>

-  **Night Pageant** / Dec. 3 (Sat.), 4 (Sun.), 10 (Sat.), 11 (Sun.), 17 (Sat.), 18 (Sun.), 23 (Fri.), 24 (Sat.) & 25 (Sun.) / 4:30pm - 9:00pm  
 ✧ Entry allowed up to 8:30pm.  
 ✧ Christmas concerts (① 6:00pm ② 7:30pm) will be held.  
 ✧ Free shuttle bus service between JR Itsukaichi Station (north exit) and the botanical garden will be available on the event days.  
 Departure time  
 ◆ From the station:  
 3:30pm / 4:10pm / 4:50pm / 5:30pm / 6:55pm / 7:35pm  
 ◆ From the botanical garden:  
 3:50pm / 4:30pm / 5:10pm / 6:35pm / 7:15pm / 8:45pm / 9:20pm
-  **Junior Project** / Sun., Dec. 11 / ① 11:00am - noon ② 1:30pm - 2:30pm / For elementary school students and up

## Children's Museum of Culture and Science

(5-83 Moto-machi, Naka-ku 730-0011 / 222-5346 / 9:00am - 5:00pm / Closed on Dec. 5, 12, 19, 26, 27, 29, 30, 31; Jan. 1, 2, 3, 10, 11, 16, 23 & 30 / Admission fee for planetarium is required (see below). / <http://www.pyonta.city.hiroshima.jp/>)

★ **The Planetarium will be closed until Tue., January 3, 2017 due to renovations.**

Please feel free to contact the International Exchange Lounge at 082-247-9715.

E-mail: [golounge@pcf.city.hiroshima.jp](mailto:golounge@pcf.city.hiroshima.jp)

Winter 2016-2017



## DECEMBER, 2016

- ☆ Events at Apollo Hall (250 seats) / Free admission
- ◆ Christmas Concert 2016 / Sun., Dec. 11 / ① Noon - 12:50pm ② 2:30pm - 3:20pm (Doors will open at 11:45am for ① & at 2:15pm for ②.)
  - ◆ Christmas Musical / Sun., Dec. 18 / ① Noon - 1:00pm ② 2:30pm - 3:30pm (Doors will open at 11:30am for ① & at 2:00pm for ②.)
- ☆ Craft Workshops / Dec. 3 (Sat.), 11 (Sun.), 18 (Sun.), 23 (Fri.) & 25 (Sun.) / 1:00pm - 3:30pm / For children under elementary school entry age, elementary school students (1<sup>st</sup> - 3<sup>rd</sup> grade) and their guardians / 3F, *Kosaku-shitsu* (Craft Room) / Fee: ¥30 for materials
- ◇ Each day's program is different. For more information, please contact the museum.
- ☆ Science Show / ① 1:30pm - 2:00pm ② 3:00pm - 3:30pm / 1F, Science Studio / Fee: Free
- ◆ Science of Fire / Sat., Dec. 10
  - ◆ Science of Light / Sat., Dec. 17

⊛ The events listed below require advance applications.

To APPLY: Send an *ofuku-hagaki* (return postcard) to the museum, postmarked by each event's application deadline with the following information: applicants' names, address, telephone number, school year and the event name and time you wish to attend.

## Science Workshop

- ◆ Working with Electricity: Make Something Sparkle with All the Colors of the Rainbow / きみ ぎじゅつしゃ でんしこうさく にじいろ ひか 君も技術者②電子工作「虹色に光るオブジェ」 ("Kimi mo gijyutsusha ②: Denshi kosaku <Niji-iro ni hikaru object>") / Fri., Dec. 23 / 9:30am - noon / For elementary (3<sup>rd</sup> - 6<sup>th</sup> grade) and junior high school students / Fee: ¥1,200 / Closing date for applications: Fri., Dec. 9
- ◇ 16 people will be selected at random by a drawing of names.
- ◆ Make *Konnyaku* / 手作 り こんにゃく ("Tezukuri konnyaku") / Sun., Jan. 15 / ① 9:30am - noon ② 1:30pm - 4:00pm / For elementary school students / Fee: ¥400 / Closing date for applications: Sun., Jan. 1
- ◇ 16 people will be selected at random by a drawing of names for each time slot.

## Craft Workshops

- ◆ Make a Xylophone / 手作 り 木琴 ("Tezukuri mokkin") / Sun., Dec. 25 / 9:30am - 3:30pm / For elementary (4<sup>th</sup> - 6<sup>th</sup> grade) and junior high school students / Fee: ¥600 / Closing date for applications: Sun., Dec. 11
- ◇ 12 people will be selected at random by a drawing of names.

- ◆ Pottery Class / 冬の陶芸教室 ("Fuyu no togei kyoshitsu") / Sat., Jan. 14 & Sun., Feb. 5
- ◇ Total 2 lectures. You will be required to attend both days. / Jan. 14: 10:00am - 3:00pm; Feb. 5: 1:30pm - 4:00pm / For elementary and junior high school students / Fee: ¥1,800 / Closing date for applications: Sat., Dec. 31
- ◇ 20 people will be selected at random by a drawing of names.

## JANUARY, 2017



## ★ Planetarium ★

## ★ Admission Fee for Planetarium:

Adults-¥510, Seniors & High school students-¥250, Junior high & Elementary school students-Free

◇ Free admission for high school students on Saturdays (except on most national holidays and during school holidays).

Admission fee for adults is ¥250 on the second Saturday of every month (except on most national holidays and during school holidays).

- ☆ Planetarium Program: Adventures of LEAF the little leaf (45 min.) / Wed., Jan. 4 - Sun., Mar. 5 / ◆ Weekdays (except Jan. 4, 5 & 6): 11:00am ◆ Sat., Sun., national holidays, Jan. 4, 5 & 6: ① 10:00am ② 3:00pm / Adults-¥510, Seniors & High school students-¥250
- ☆ Planetarium Constellation Projection (45 min.)
  - ◆ Aurora / Wed., Jan. 4 - Sun., Jan. 15 / ◆ Weekdays (except Jan. 4, 5 & 6): 2:00pm ◆ Sat., Sun., national holidays, Jan. 4, 5 & 6: ① 11:00am ② 2:00pm / Adults-¥510, Seniors & High school students-¥250
  - ◆ Calendars of Ancient Times / Sat., Jan. 21 - Mon., Jul. 17 / ◆ Weekdays: 2:00pm ◆ Sat., Sun., national holidays: ① 11:00am ② 2:00pm / Adults-¥510, Seniors & High school students-¥250
- ☆ Full Dome Screen Film: Tiny Giants ('14 UK, 45 min.) / Wed., Jan. 4 - Wed., Apr. 28 / ◆ Weekdays (except Jan. 4, 5 & 6): 3:00pm ◆ Sat., Sun., national holidays, Jan. 4, 5 & 6: 1:00pm / Adults-¥510, Seniors & High school students- ¥250
- ☆ Refretarium: Winter Program (20 min.) / Wed., Jan. 4 - Fri., Mar. 17 (except Sundays) / ◆ Weekdays (except Jan. 4, 5 & 6): 1:00pm ◆ Sat., national holidays, Jan. 4, 5 & 6: 4:00pm / High school students and up-¥200
- ◇ This is a program to refresh your mind and body during lunch time while watching the starry sky and listening to music. Although the main target of this program is adults, anyone who wishes to rejuvenate themselves is welcome.

Please feel free to contact the International Exchange Lounge at 082-247-9715.

E-mail: [golounge@pcf.city.hiroshima.jp](mailto:golounge@pcf.city.hiroshima.jp)

Winter 2016-2017

☆ **Starry Sky Tour:**

- ◆ **Tonight's Starry Sky & Calendar and Astronomy** (50 min.) / Sun., Jan. 8 - Sun., Apr. 16 / 4:00pm / Adults-¥510, Seniors & High school students-¥250

- ☆ **Guitar & Harp Concert at Planetarium** / Sat., Feb. 11 / 6:30pm - 7:30pm / For elementary school students and up / Adults-¥510, Seniors & High school students-¥250

**TO APPLY:** Send an *ofuku-hagaki* (return postcard) with the applicant's name, address, telephone number, the numbers of applicants (up to 5 people), all applicants' ages, and the event name **コスミックコンサート** ("*Cosmic concert*") to the planetarium by Sat., Feb. 4.

★ **Events** ★

- ☆ **Events at Apollo Hall** (250 seats) / Free admission

- ◆ **Taiko, Traditional Japanese Drum Performance** / Sun., Jan. 8 / 2:30pm - 3:20pm (Doors will open at 2:15pm.)
- ◆ **Special New Year's Performance** / Sun., Jan. 15 / ① Noon - 1:00pm ② 2:30pm - 3:30pm (Doors will open at 11:45am for ① & at 2:15pm for ②.)

- ☆ **Craft Workshops** / Jan. 8 (Sun.), 14 (Sat.), 22 (Sun.) & 29 (Sun.) / 1:00pm - 3:30pm / For children under elementary school entry age, elementary school students (1<sup>st</sup> - 3<sup>rd</sup> grade) and their guardians / 3F, *Kosaku-shitsu* (Craft Room) / Fee: ¥30 for materials
- ◇ Each day's program is different. For more information, please contact the museum.

- ☆ **Science Show** / ① 1:30pm - 2:00pm ② 3:00pm - 3:30pm / 1F, Science Studio / Fee: Free
- ◆ **Static Electricity** / Sat., Jan. 7
- ◆ **Mystery of Air** / Sat., Jan. 21

- ⊕ The events listed below require advance applications.

**TO APPLY:** Send an *ofuku-hagaki* (return postcard) to the museum, postmarked by each event's application deadline with the following information: applicants' names, address, telephone number, school year and the event name and time you wish to attend.

**Science Workshops**

- ◆ **Science of Static Electricity / 静電気の科学**  
「**静電気で妖怪を飛ばそう!**」 ("*Seidenki no kagaku: Seidenki de yokai wo tobasou!*") / Sat., Feb. 4 / 1:30pm - 4:00pm / For elementary school students / Fee: ¥100 / Closing date for applications: Sat., Jan. 21 ◇ 16 people will be selected at random by a drawing of names.

**Craft Workshop**

- ◆ **Make a Maze Box / どんぐり迷路BOX**  
("Donguri meiro box") / Sat., Jan. 21 / ① 9:30am - noon ② 1:30pm - 4:00pm / For elementary school students / Fee: ¥300 / Closing date for applications: Sat., Jan. 7
- ◇ 20 people will be selected at random by a drawing of names for each time slot.

**Hiroshima City Asa Zoological Park**

(Asa-cho Dobutsuen, Asakita-ku 731-3355 / 838-1111 / 9:00am - 4:30pm / Closed: Thursdays, Dec. 30 & 31 / Adults-¥510, Seniors & High school students- ¥170, Junior high & Elementary school students-Free / <http://www.asazoo.jp/>)

- ◆ Free admission on December 23 ◆

- 🐾 **Take a Photo at the Comic Foregrounds in front of Bird Cages** / Fri., Dec. 2 - Wed., Dec. 28 / 9:00am - 4:30pm
- ☺ 2017 is the year of the rooster in the Chinese zodiac.
- 🐾 **Make a Felt Snowman** / Sat., Dec. 3 / 9:30am - 12:50pm ◇ The first 100 people can participate until noon on the day of.
- 🐾 **Backyard Guide Tour** / Sat., Dec. 3, 10 & 17 / ① 11:00am ② 1:30pm / Please gather near the entrance at 9:00am on each activity day. The first 25 - 40 people can participate. The number of participants will differ depending on where you visit. We will explore a different place on each trip.
- 🐾 **Exhibition: Flightless Birds** / Sat., Dec. 10 - Mon., Jan. 9 / 9:00am - 4:30pm / *Dobutsu Kagaku-kan*
- 🐾 **Animal Capture Training Observation** / Sat., Dec. 17 / 2:00pm - 2:30pm
- ◇ You can watch training on how to catch an escaped animal.
- ◇ This will be canceled if it rains.
- 🐾 **Make an Animal-shaped Candle for Christmas** / Sun., Dec. 18 / 9:00am - 12:30pm / Participation fee: ¥300
- ◇ The first 100 people will be accepted until noon on the day of.
- 🐾 **Winter Solstice Event** / Wed., Dec. 21 / From 11:30am onward
- ☺ Give pumpkins to animals (baboons & elephants). Pumpkin soup will also be served to the first 200 people.
- 🐾 **Make a Shimenawa, traditional Japanese New Year's Decoration** / Sat., Dec. 24 / 9:30am - 12:45pm / Participation fee: ¥800
- ◇ The first 40 people will be accepted until noon on the day of.

Please feel free to contact the International Exchange Lounge at 082-247-9715.

E-mail: [golounge@pcf.city.hiroshima.jp](mailto:golounge@pcf.city.hiroshima.jp)

Winter 2016-2017

- 🦎 **Giant Salamander Facility Tour** / Sat., Dec. 24 / 11:00am - 11:30am ✧ Reservations will be accepted from 9:00am at the main entrance until 20 spots are filled.
- 🦏 **Meet the Black Rhinoceros named *Hana*** / Sat., Dec. 24 / ① 1:30pm ② 1:45pm  
✧ Participation tickets will be distributed from 9:00am at the main entrance until 10 spots are filled for each time slot.  
✧ The black rhinoceros, *Hana*, is the world's oldest living black rhinoceros.
- 🎄 **Christmas Events: Christmas Presents from "*Saita Claus*"** / Sun., Dec. 25 / From 11:00am onward  
✧ "*Saita Claus*" (black rhinoceros, *kurosai* in Japanese) will give presents to the first 400 people.

🚗 **Numaji Transportation Museum**  
(Hiroshima City Transportation Museum)  
(2-12-2 Chorakuji, Asaminami-ku 731-0143 / 878-6211 / 9:00am - 5:00pm / Closed: Dec. 5, 6, 7, 8, 12, 19, 26, 27, 29, 30, 31; Jan. 1, 2, 3, 10, 11, 16, 23, 30 & 31 / Adults-¥510, Seniors & High school students-¥250, Junior high school students or younger-Free /  
<http://www.vehicle.city.hiroshima.jp>)

## DECEMBER, 2016

- 🚗 **The Museum's Special Exhibition: Road Safety** / Fri., Oct. 14 - Sun., Dec. 4
- ★ **Special Exhibition-Related Events** ★
  - ◆ **Children's Craft Workshop: Make a Railway Crossing with a Straw** / Sun., Dec. 4 / 1:00pm - 3:30pm / For preschoolers, elementary school students and their guardians / 1F, Craft Room / Fee: ¥50 for materials ✧ The first 100 groups can participate on the day of.
- 🎵 **Fire Music Band Concert** / Sat., Dec. 3 / 1:30pm - 2:10pm / 1F, *Tamokuteki Hall* / Fee: Free
- 🔬 **Science Show: Static Electricity** / Sat., Dec. 10 & Sun., Dec. 11 / ① 11:30am - 11:50am ② 1:30pm - 1:50pm ③ 2:30pm - 2:50pm / 1F, *Tamokuteki Hall* / Fee: Free
- 🚗 **Exhibition on a Streetcar Exposed to the A-Bomb** / Sat., Dec. 17 / ① 11:00am - noon ② 1:30pm - 3:00pm / *Okugai Hiroba* (outdoor open space) / Fee: Free  
✧ Exhibition will be canceled if it is bad weather.
- 🚗 **Vehicle Land: Playing with Toy Vehicles** / Sat., Dec. 17 & Sun., Dec. 18 / 1:00pm - 3:45pm / 1F, *Tamokuteki Hall* / Fee: Free

- 📖 **Free Back Issues of Magazines** / Fri., Dec. 23 / ① 10:30am - 12:30pm ② 1:30pm - 3:30pm / 1F, Library Entrance
- 🎨 **Children's Craft Workshops** / Dec. 4 (Sun.), 11 (Sun.), 18 (Sun.), 23 (Fri.) & 25 (Sun.) / 1:00pm - 3:30pm / For preschoolers, elementary school students and their guardians / 1F, Craft Room / Fee: ¥50 for materials ✧ The first 100 groups can participate on the day of.
- 🎨 **Craft Workshop for Elementary School Students: Christmas Tree-shaped Musical Box** / Sat., Dec. 17 / 1:00pm - 4:00pm / 1F, Craft Room / For elementary school students (1<sup>st</sup> - 4<sup>th</sup> grade students should be accompanied by their guardians.) / Fee: ¥900 for materials  
**TO APPLY:** Send an *ofuku-hagaki* (return postcard) with the applicant's name, name of the school the applicant belongs to, grade, address, telephone number, event date and the workshop name しょうがくせいこうさくきょうしつ **小学生工作教室: オルゴールのクリスマスツリー** ("Shogakusei kousaku kyoushitsu: orogoru no Christmas tree") to the museum by Wed., Dec. 7. 20 people will be selected at random by a drawing of names.

## January, 2017

- 🎵 **Winter Festival 2017** / Jan. 7 (Sat.), 8 (Sun.) & 9 (Mon.)
- ◆ **EVENTS** ◆
  - ◆ **Stage Events** / ① 1:30pm - 2:15pm ② 3:00pm - 3:45pm / 1F, *Tamokuteki Hall* / Free admission
    - ◆ **Puppet Show** / Sat., Jan. 7
    - ◆ **Ninja Performance Show** / Sun., Jan. 8
    - ◆ **Balloon Art Show** / Mon., Jan. 9
  - ◆ **Children's Craft Workshops** / ① 10:30am - 11:30am ② 1:00pm - 3:30pm / For preschoolers, elementary school students and their guardians / 1F, Craft Room / Fee: ¥50 for materials  
✧ The first 100 groups can participate on the day of.
  - ◆ **Step Inside a MAZDA Cosmo Sport** / ① 11:00am - noon ② 2:00pm - 3:00pm / 1F, Entrance Hall / Participation fee: Free  
✧ The car engine will not be started.
- 🎨 **Winter Craft Workshop for Children** / Sat., Jan. 28 / 1:00pm - 3:30pm / For preschoolers, elementary school students and their guardians / 1F, Craft Room / Fee: ¥10 for materials ✧ The first 100 groups can participate on the day of.



Please feel free to contact the International Exchange Lounge at 082-247-9715.

E-mail: [golounge@pcf.city.hiroshima.jp](mailto:golounge@pcf.city.hiroshima.jp)

Winter 2016-2017

- 🚗 **Exhibition on a Streetcar Exposed to the A-Bomb** / Sat., Jan. 21 / ① 11:00am - noon ② 1:30pm - 3:00pm / *Okugai Hiroba* (outdoor open space) / Fee: Free  
 ✧ Exhibition will be canceled if it is bad weather.

- 🚗 **Vehicle Land: Playing with Toy Vehicles** / Sat., Jan. 14 & Sun., Jan. 15 / 1:00pm - 3:45pm / 1F, *Tamokuteki Hall* / Fee: Free

- 🚗 **Children's Craft Workshops** / Jan. 7 (Sat.), 8 (Sun.), 9 (Mon.), 15 (Sun.), 22 (Sun.) & 29 (Sun.) / ♦ Jan. 7, 8 & 9: ① 10:30am - 11:30am ② 1:00pm - 3:30pm; ♦ Jan. 15, 22 & 29: 1:00pm - 3:30pm / For preschoolers, elementary school students and their guardians / 1F, Craft Room / Fee: ¥50 for materials ✧ The first 100 groups can participate on the day of.

- 🚗 **Craft Workshop for Elementary School Students: Remote-controlled *Astramline*** / Sat., Jan. 21 / 1:00pm - 4:00pm / 1F, Craft Room / For elementary school students (1<sup>st</sup> - 4<sup>th</sup> grade students should be accompanied by their guardians.) / Fee: ¥400 for materials **TO APPLY:** Send an *ofuku-hagaki* (return postcard) with the applicant's name, name of the school the applicant belongs to, grade, address, telephone number, event date and the workshop name しょうがくせいこうさくきょうしつ **小学生工作教室：リモコンアストラムライン** ("*Shogakusei kousaku kyoushitsu: rimokon astramline*") to the museum by Wed., Jan. 11. 20 people will be selected at random by a drawing of names.

- 🚗 **Craft Workshop for Adults: Make a Wooden Storage Box** / Fri., Jan. 27 / 10:00am - 1:00pm / 1F, Craft Room / For 16 year olds and up / Fee: ¥3,800 for materials **To APPLY:** Send an *ofuku-hagaki* (return postcard) with applicant's name, address, telephone number, age, event date and the event name おとな こうさくきょうしつ もくせいしゅうのうばこ **大人の工作教室 木製収納箱** ("*Otona no kousaku kyoushitsu: mokusei shuno-bako*") to the museum by Tue., Jan. 17. 13 people will be selected at random by a drawing of names.

## ☂ **Hiroshima City Ebayama Museum of Meteorology**

(1-40-1 Eba-minami, Naka-ku 730-0835 / 231-0177 / 9:00am - 5:00pm / Closed on Dec. 5, 6, 12, 13, 19, 20, 26, 27, 29, 30 & 31; Jan. 1, 2, 3, 10, 11, 16, 20, 23, & 30 / Adults-¥100, Seniors & High school students-¥50, Junior high & Elementary school students-Free (Admission free for high school students on Saturdays except during school holidays) / <http://www.ebayama.jp/>)

- ★ From December, events will not be held temporarily due to renovations of refrigeration and heating equipment.  
 ✧ You can see the permanent exhibition as usual.

## 🏛 **Hiroshima City Museum of History and Traditional Crafts**

(2-6-20 Ujina-miyuki, Minami-ku 734-0015 / 253-6771 / 9:00am - 5:00pm / Closed on Mondays (except Jan. 9), Tuesdays, Dec. 24, Dec. 29 - Jan. 3, Jan 10 & 11 / Adults-¥100, Seniors & High school students-¥50, Junior high school students and younger-Free / <http://www.hiroins-net.ne.jp/kyodo/>)

### 🚩 **Special Exhibitions**

- ◆ **Hiroshima in Early Meiji Period** / Sat., Dec. 10 - Sun., Feb. 19

### 🚩 **Workshops, etc.**

- ◆ **Make an Original *Hagoita* (traditional Japanese wooden paddle)** / Sat., Dec. 17 / 1:00pm - 3:00pm / Elementary school students and their guardians / Fee: ¥500 (Admission fee for the museum is also required)

✧ Applications will be accepted by phone or fax between Dec. 1 and 4. 10 groups will be selected at random by a drawing of names.

- ◆ ***Mochi-tsuki*, Rice-Cake Making** / Fri., Dec. 23 / 1:00pm - 3:00pm / Elementary school students / Fee: ¥200 (Admission fee for the museum is also required.)

✧ Applications will be accepted by phone or fax between Dec. 1 and Dec. 4. 30 people will be selected at random by a drawing of names.

- ◆ ***Kendama* Lesson for Beginners** / Sat., Jan. 15 / 1:00pm - 3:00pm / Elementary school students and up / Fee: Free (Admission fee for the museum is required.)

✧ Applications will be accepted by phone or fax between Jan. 4 and 7. 30 people will be selected at random by a drawing of names.

- ◆ **Make Baumkuchen** / Sat., Feb. 4 & Sun., Feb. 5 / 1:00pm - 3:00pm / Elementary school students / Fee: ¥300 (Admission fee for the museum is also required.)

✧ Applications will be accepted by phone or fax between Jan. 4 and 7. 20 people will be selected at random by a drawing of names for each day.



Please feel free to contact the International Exchange Lounge at 082-247-9715.

E-mail: [golounge@pcf.city.hiroshima.jp](mailto:golounge@pcf.city.hiroshima.jp)

Winter 2016-2017



- ◆ **Spin a Thread** / Sat., Feb. 11 / 1:00pm - 3:00pm / Elementary school students and their guardians / Fee: ¥50 (Admission fee for the museum is also required.)
- ◇ Applications will be accepted by phone or fax between Jan. 4 and 7. 10 groups will be selected at random by a drawing of names.

## **Hiroshima City Cinematographic and Audio-Visual Library**

(3-1 Moto-machi, Naka-ku 730-0011 / 223-3525 / 10:00am - 8:00pm (Tue.-Sat.), 10:00am - 5:00pm (Sun., national holidays & August 6) / Closed on Mondays, Dec. 27, December 29 - January 4 / **35mm Film Showings** ⇒ Adults-¥510, Seniors & High school students-¥250, Junior high school students or younger-Free; **Other Film Showings** ⇒ Adults-¥380, Seniors & High school students - ¥180, Junior high school students or younger - Free, Admission free for foreign students (Please show your student ID or the Hiroshima International Center Complimentary Pass.) / <http://www.cf.city.hiroshima.jp/eizou/>)

## **December Special Showings of Masterpieces of Japanese Film: Masaki Kobayashi, a Film Director (Screened in Japanese only)**

### **Admission Fee:**

Adults-¥510, Seniors (65 years old and up) & High school students-¥250, Junior high & Elementary school students-Free  
★ Sat., Dec. 17: Free admission for high school students

- **Fri., Dec. 2** / ① 10:30am ② 2:00pm ③ 6:00pm  
**Nihon no seishun / 日本の青春** (1968, Tokyo Eiga, 129 min., B&W, 35mm film) / Director: Masaki Kobayashi / Cast: Makoto Fujita, Michiyo Aratama, Toshio Kurosawa, Wakako Sakai
- **Sat., Dec. 3** / ① 10:30am ② 2:00pm  
**Kaidan / 怪談** (1964, Bungei Production Ninjin Club, 161 min., color, 35mm film) / Director: Masaki Kobayashi / Cast: Rentaro Mikuni, Tatsuya Nakadai, Keiko Kishi, Katsuo Nakamura
- **Sun., Dec. 4** / ① 10:30am ② 2:00pm  
**Inochi bou ni furou / いのち・ぼうにふろう** (1971, Toho, Haiyuza, 121 min., B&W, 35mm film) / Director: Masaki Kobayashi / Cast: Tatsuya Nakadai, Komaki Kurihara, Wakako Sakai, Shintaro Katsu
- **Fri., Dec. 16 & Sat., Dec. 17** / 2:00pm  
**Tokyo saiban / 東京裁判** (1983, kodansha, 277 min., B&W, 35mm film) / Director: Masaki Kobayashi / Film editing: Keiichi Uraoka / Sound recordist: Hideo Nishizaki / Music: Toru Takemitsu

- **Sat., Dec. 24** / ① 10:30am ② 3:00pm  
**Kaseki / 化石** (1975, Haiyuza, Shiki no Kai, 201 min., color, 35mm film) / Director: Masaki Kobayashi / Cast: Shin Saburi, Keiko Kishi, Hisashi Igawa, Komaki Kurihara

### **"Barrier-free" Screening**

- ◇ In this program, a film will be screened with Japanese subtitles and supplementary sound so that people with visual impairment or hearing disabilities can also enjoy a film.

### **Admission Fee:**

Adults-¥380, Seniors (65 years old and up) & High school students-¥180, Junior high & Elementary school students-Free  
★ **Wed., Dec. 7:** Adults-¥510, Seniors (65 years old and up) & High school students-¥250, Junior high & Elementary school students-Free  
★ **Sat., Dec. 10:** Free admission for high school students

- **Wed., Dec. 7** / ① 10:30am ② 2:00pm  
**Musuko / 息子** (1991, Shochiku, 121 min., color, 35mm film, Japanese subtitles) / Director: Yoji Yamada / Cast: Rentaro Mikuni, Masatoshi Nagase, Emi Wakui, Mieko Harada
- **Thurs., Dec. 8** / ① 10:30am ② 3:00pm  
**Senso to Ningen Part 1 / 戦争と人間 第一部** (1970, Nikkatsu, 198 min., color, Blu-ray, Japanese subtitles) / Director: Satsuo Yamamoto / Cast: Osamu Takizawa, Shinsuke Ashida, Ruriko Asaoka, Hideki Takahashi
- **Fri., Dec. 9** / ① 10:30am ② 3:00pm  
**Senso to Ningen Part 2 / 戦争と人間 第二部** (1971, Nikkatsu, 182 min., color, Blu-ray, Japanese subtitles) / Director: Satsuo Yamamoto / Cast: Kinya Kitaoji, Yoshiko Sakuma, Etsushi Takahashi, Rentaro Mikuni
- **Sat., Dec. 10** / ① 10:30am ② 3:00pm  
**Senso to Ningen Final / 戦争と人間 完結篇** (1973, Nikkatsu, 181 min., color, Blu-ray, Japanese subtitles) / Director: Satsuo Yamamoto / Cast: Kinya Kitaoji, Sayuri Yoshinaga, Kei Yamamoto, Junko Natsu
- **Sun., Dec. 11** / ① 10:30am ② 2:00pm  
**An / あん** (2015, Eiga "An" Seisaku linkai, Comme des Cinemas, Twenty Twenty Vision, MAM, ZDF-Arte, 113 min., color, Blu-ray, Japanese subtitles & supplementary sound) / Director: Naomi Kawase / Cast: Kirin Kiki, Masatoshi Nagase, Kyara Uchida, Etsuko Ichihara
- **Wed., Dec. 14** / ① 2:00pm ② 6:30pm  
**Planet of Snail** ◇ Documentary film (2011, Korea, 87 min., color, Blu-ray, Japanese subtitles & supplementary sound) / Director: Seung-jun Yi / Cast: Young-Chan Jo, Soon-ho Kim

Please feel free to contact the International Exchange Lounge at 082-247-9715.

E-mail: [golounge@pcf.city.hiroshima.jp](mailto:golounge@pcf.city.hiroshima.jp)

Winter 2016-2017



- **Thurs., Dec. 15 / ① 2:00pm ② 6:00pm**  
**Intouchables** (2011, France, 113 min., color, Blu-ray, Japanese subtitles & supplementary sound) /  
 Director: Eric Toledano, Olivier Nakache / Cast:  
 François Cluzet, Omar Sy

🎬 **Amore! Italy**  
 (Screened in original language with Japanese subtitles)

- 👏 **Admission Fee:**  
 Adults-¥380, Seniors (65 years old and up) &  
 High school students-¥180, Junior high &  
 Elementary school students-Free

- **Wed., Dec. 21 / ① 2:00pm ② 6:00pm**  
**Manuale d'amore** (2011, Italy, 126 min., color) /  
 Director: Giovanni Veronesi / Cast: Robert De Niro,  
 Monica Bellucci, Carlo Verdone, Riccardo Scamarcio
- **Thurs., Dec. 22 / ① 2:00pm ② 6:00pm**  
**Venuto al mondo** (2012, Italy, Spain, 129 min.,  
 color) / Director: Sergio Castellitto / Cast: Pénélope  
 Cruz, Emile Hirsch, Adnan Haskovic
- **Fri., Dec. 23 / ① 10:30am ② 2:00pm**  
**Viaggio in Italia** (1953, Italy, 85 min., B&W) /  
 Director: Roberto Rossellini / Cast: Ingrid Bergman,  
 George Sanders, Maria Mauban

🎬 **Katsuben Theater** (a silent film screening  
 with narration)

- 👏 **Katsuben-shi** (narrator): Midori Sawato  
 ✧ The narration is held in Japanese.  
 ✧ Reservations are NOT required.

- 👏 **Admission Fee:**  
 Adults-¥380, Seniors (65 years old and up) &  
 High school students-¥180, Junior high &  
 Elementary school students-Free

- **Sun., Dec. 18 / 2:00pm**  
**Metropolis** (1927, Germany, 85 min., B&W, Silent)  
 / Director: Fritz Lang / Cast: Alfred Abel, Gustav  
 Fröhlich, Brigitte Helm

🎬 **Family Theater**  
 (Animated Film is in Japanese only)

- 👏 **Admission Fee:**  
 Adults-¥510, Seniors (65 years old and up) &  
 High school students-¥250, Junior high &  
 Elementary school students-Free
- **Sun., Dec. 25 / ① 10:30am ② 2:00pm**  
**Arashi no yoru ni / あらしのよるに** (2005,  
 "Arashi no yoru ni" Seisaku linkai, 106 min., color,  
 35mm film) / Director: Gisaburo Sugii / Voice actor:  
 Shido Nakamura, Hirofuma Narimiya, Shozo  
 Hayashiya, Koichi Yamadera

🎬 **Culture Film Screening**  
 (Screened in Japanese only)

- 👏 **Admission Fee:**  
 Adults-¥380, Seniors (65 years old and older)  
 & High school students-¥180, Junior high &  
 Elementary school students-Free

- **Thurs., Dec. 1 / ① 2:00pm ② 6:00pm**  
 4 films, 78 min.  
 ① Muromachi jidai no shakai to bunka / 室町  
 時代の社会と文化  
 ② Kinkaku to Yoshimitsu / 金閣と義満  
 ③ Ginkaku to Yoshimasa / 銀閣と義政  
 ④ Shiro to jōka-machi / 城と城下町
- **Wed., Dec. 28 / ① 10:30am ② 2:00pm**  
 4 films, 83 min.  
 ① Nobunaga, Hideyoshi, Ieyasu / 信長・秀  
 吉・家康  
 ② Iemitsu to Edo bakufu / 家光と江戸幕府  
 ③ Sekai ni hirakareta mado ~ dejima to  
 chosen tsushinshi ~ / 世界に開かれた窓～  
 出島と朝鮮通信使～  
 ④ Rangaku wo osameta hitobito / 蘭学をお  
 さめた人びと



Please feel free to contact the International Exchange Lounge at 082-247-9715.

E-mail: [golounge@pcf.city.hiroshima.jp](mailto:golounge@pcf.city.hiroshima.jp)

Winter 2016-2017

# Library News

December 2016

## Recommended Books for This Month

### My First Book of Japanese Words: An ABC Rhyming Book

By Michelle Haney Brown, Illustrated by Aya Padión  
(Tuttle Publishing, c2013)

### Dot.

By Randi Zuckerberg, Illustrated by Joe Berger (Doubleday, 2013)

### The Day the Crayons Quit

By Drew Daywalt, Pictures by Oliver Jeffers  
(HarperCollins Children's Books, 2013)

### The Twin Knights

By Osamu Tezuka, Translation by Maya Rosewood (Vertical, c2013)

### Mobile Suit Gundam the Origin I - Activation -

By Yoshikazu Yasuhiko,  
Original story by Yoshiyuki Tomino, Hajime Yatate  
Mechanical design by Kunio Okawara (Vertical, c2013)

What other books should we add to our collection? Your suggestions are always welcome!



## Library Corner

**LOCATION:** International Conference Center Hiroshima (ICCH), 1<sup>st</sup> Floor

**T E L L :** (082)247-9715

**H O U R S :** 9:00 am - 7:00 pm (From April 1 to September 30)  
9:00 am - 6:00 pm (From October 1 to March 31)

**C L O S E D :** December 29<sup>th</sup> through January 3<sup>rd</sup>

### **BOOK LOAN POLICY:**

Up to three books may be borrowed for a two-week period. To obtain an ICCH Library Card, you need to bring identification which has your address, and for foreign residents, your period of stay in Japan. (A Japanese driver's license, student identification card, passport or resident card is an acceptable form of identification.)



Please feel free to contact the International Exchange Lounge at 082-247-9715.

E-mail: [golounge@pcf.city.hiroshima.jp](mailto:golounge@pcf.city.hiroshima.jp)

Winter 2016-2017

# 図書だより

2016年12月

今月のおすすめ図書

「やさしい日本語」は何を目指すか：多文化共生社会を実現するために

庵 功雄／編，イ ヨンスク／編，森 篤嗣／編（ココ出版，2013年）

やさしい日本語：多文化共生社会へ

庵 功雄／著（岩波書店，2016年）

海外パッケツアーをVIP旅行に変える101の秘訣

喜多川 リュウ／著（実業之日本社，2013年）

まるごとインドな男と結婚したら

鈴木 成子／著（彩流社，2013年）

シスターズ・ブラザーズ

パトリック・デウィット／著，茂木 健／訳（東京創元社，2013年）

本のリクエストなど図書コーナーに関するご要望はスタッフまでお気軽にお申し出ください。



## 図書コーナー

場 所：広島国際会議場 1 F ・ 国際交 流 ラウンジ（平和記念公園内）  
TEL (082)247-9715

開館時間： 9:00am - 7:00pm (4月1日から 9月30日まで)  
9:00am - 6:00pm (10月1日から 3月31日まで)

休 館 日：12月29日～1月3日

貸 出：図書は 2週 間を期限として、1回3冊まで借りることができます。

初めて利用する際には、住所や在留期間（外国人の方）を証明するもの（運転免許証・学生証・パスポート・在留カードなど）を提示して下さい。



Please feel free to contact the International Exchange Lounge at 082-247-9715.

E-mail: golounge@pcf.city.hiroshima.jp

Winter 2016-2017

# Trio-Phone Service

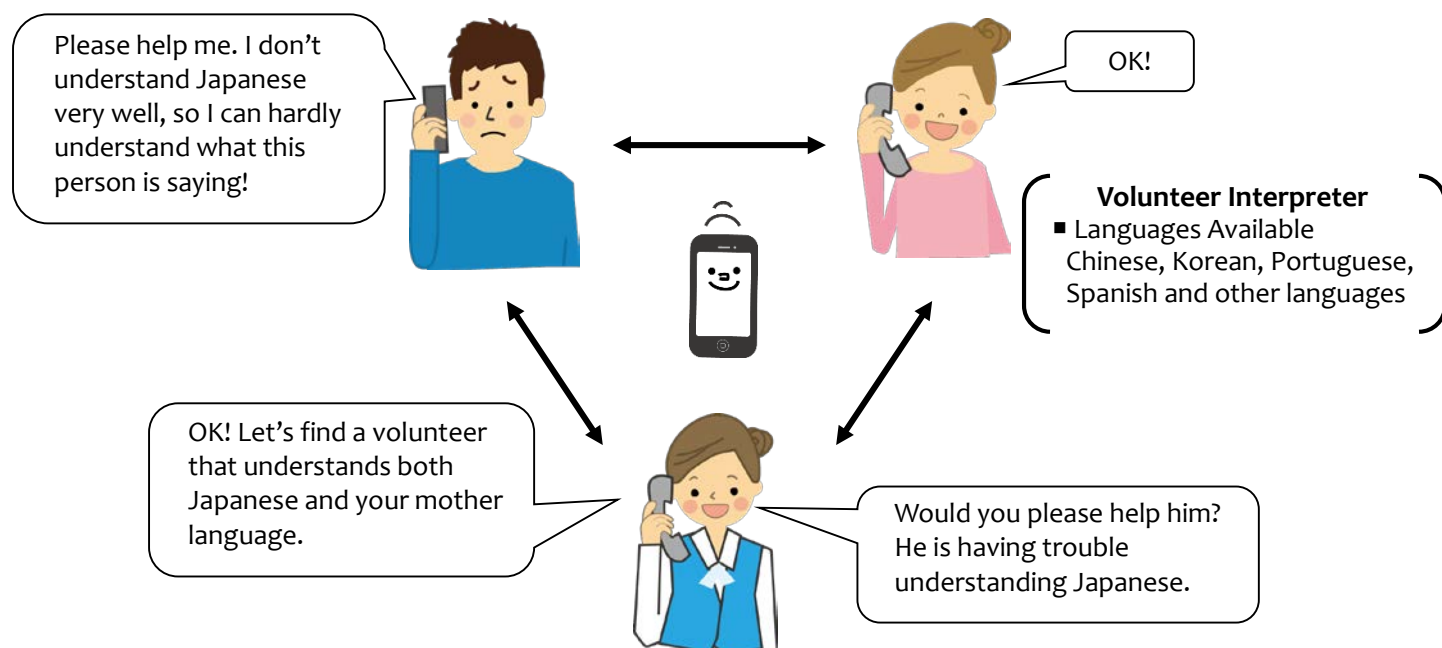
## (Multilingual Interpretation over the Telephone)



### What is Trio-Phone ?

Trio-Phone Service allows three people to have a conversation at the same time through the telephone. If you are having difficulties communicating in Japanese, call the International Exchange Lounge (082-247-9715).

A volunteer interpreter will help you through the Trio-Phone Service!



**International Exchange Lounge (Available in English)**

**TEL: 082-247-9715**

**OPEN: 9:00am – 7:00pm (April 1 – September 30)**

**9:00am – 6:00pm (October 1 – March 31)**

**CLOSED: December 29 through January 3**

**[For more information]**

**Hiroshima Peace Culture Foundation**

**International Exchange Lounge**

**TEL: 082-247-9715 FAX: 082-242-7452 E-mail: [golounge@pcf.city.hiroshima.jp](mailto:golounge@pcf.city.hiroshima.jp)**

**International Relations & Cooperation Division**

**TEL: 082-242-8879 FAX: 082-242-7452 E-mail: [internat@pcf.city.hiroshima.jp](mailto:internat@pcf.city.hiroshima.jp)**

**HP: <http://www.pcf.city.hiroshima.jp/ircd>**

Please feel free to contact the International Exchange Lounge at 082-247-9715.

E-mail: [golounge@pcf.city.hiroshima.jp](mailto:golounge@pcf.city.hiroshima.jp)

Winter 2016-2017

## 使用済み切手、テレホンカード、ペットボトルのキャップで「小さな国際協力」 Assisting with International Cooperation with Used Stamps, Telephone Cards & PET Bottle Caps

The International Exchange Lounge collects used stamps and telephone cards to assist international cooperation activities. Through the two volunteer groups, JOCS and ShaplaNeer, the collected stamps and cards are sold to collectors to raise money. With the profit, items such as milk and medicine are purchased and doctors as well as nurses are dispatched throughout Asia and other continents. We also collect PET bottle caps in order to support the “Ecocap Action”. The sales profits obtained by recycling caps are donated to the Japan Committee “Vaccines for the World’s Children” (JCV).

\*JOCS: Japan Overseas Christian Medical Cooperative Service

\*ShaplaNeer = Citizens’ Committee in Japan for Overseas Support

国際交流ラウンジでは国際協力に役立てるため、使用済み切手、テレホンカード、ペットボトルのキャップを収集しています。収集した切手とテレホンカードは、それぞれ公益社団法人日本キリスト教海外医療協力会 (JOCS)、特定非営利活動法人シャプラニール＝市民による海外協力の会へ郵送し、最終的に収集家によって購入されます。この収益金により、例えばアジア地域に医師や看護師を派遣することができます。収集したペットボトルのキャップは、キャップの再資源化で得た売上金を認定NPO法人「世界の子どもにワクチンを」日本委員会 (JCV) へ寄付し、発展途上国の子どもたちにワクチンを届けるというエコキャップ活動に役立てられます。

### HOW TO COLLECT:

- **Stamps** ⇒ When you cut stamps from envelopes, please leave 5mm of paper around them. It is not necessary to remove them from the envelope. Torn or folded stamps cannot be accepted.
- **Telephone Cards** ⇒ Please note that cards which are folded or stained cannot be accepted.
- **PET Bottle Caps** ⇒ Only PET bottle caps for drinks or mineral water are accepted. Please wash the caps and tear off the sticker if it has one. This is in order to avoid damaging the recycling machines. Things such as metal caps and pull-top tabs cannot be accepted.

### 収集方法:

- **切手** ⇒ 封筒に貼ってある切手を、周囲約5ミリの余白を残してカットしてください。切手を封筒からはがす必要はありません。破れや折れなどの傷のある切手は収集の対象にはなりません。
- **テレホンカード** ⇒ テレホンカードのみ収集しています。ただし、汚れや折れなどのあるカードは除外されます。
- **ペットボトルのキャップ** ⇒ 清涼飲料水とミネラルウォーター用ペットボトルのキャップが収集対象です。収集にあたっては機械の故障を防止するため、キャップを洗い、またシールなどがあればはがしてください。金属製の蓋やブルトップなどは収集対象外です。

For further information, please ask the staff at the International Exchange Lounge.

詳しい情報につきましては国際交流ラウンジカウンターまでお問い合わせください。



Thank you

International Exchange Lounge / 国際交流ラウンジ

Tel. 082-247-9715 Fax. 082-242-7452

E-mail: golounge@pcf.city.hiroshima.jp



Please feel free to contact the International Exchange Lounge at 082-247-9715.

E-mail: golounge@pcf.city.hiroshima.jp

Winter 2016-2017



# Garbage Disposal Information

Separate garbage properly and take it to the collection site by 8:30am on the designated day. Please do NOT take garbage to the site on the night before. Garbage collection days vary depending on where you live and the category of the refuse. For further details, consult your local ward office or your neighbors to be sure of the proper disposal method. "Hiroshima 8", a handbook on how to separate garbage, and "Hiroshima City Garbage Disposal Guidelines for the 2016 fiscal year", a garbage chart with schedules of garbage collection days, are available at ward offices, branch offices and community halls. The Handbook and Guidelines are translated into English, Spanish, Portuguese, Chinese and Korean. These are also available at the International Exchange Lounge (International Conference Center Hiroshima), so please ask the staff if you need them.

## ごみの正しい出しかた

ごみは種類ごとに分けて、決められた日の朝8時半までに、決められた場所へ整理して出してください。ただし、収集日の前夜には出さないでください。ごみを出す曜日や日は、あなたの住んでいる町とごみの種類によって決められています。詳しいことはお住まいの地域の区役所や近所の人に尋ねて、正しいごみの出しかたを確認しましょう。各区役所・出張所、公民館において、ごみの正しい出しかたについて書かれたハンドブックやごみの収集日の表（英語、スペイン語、ポルトガル語、中国語、ハンゲル語）を配布しています。また、国際交流ラウンジでも配布していますので、ご希望の方はスタッフまで申し出てください。

..... We have charts for; .....

|                   |                       |
|-------------------|-----------------------|
| ★ Naka-ku / 中区    | ★ Asaminami-ku / 安佐南区 |
| ★ Higashi-ku / 東区 | ★ Asakita-ku / 安佐北区   |
| ★ Nishi-ku / 西区   | ★ Aki-ku / 安芸区        |
| ★ Minami-ku / 南区  | ★ Saeki-ku / 佐伯区      |



Please feel free to contact the International Exchange Lounge at 082-247-9715.

E-mail: [golounge@pcf.city.hiroshima.jp](mailto:golounge@pcf.city.hiroshima.jp)

Winter 2016-2017

# Japanese Language Classes in Hiroshima City

These are Japanese language classes held at community halls, and other public facilities in Hiroshima City. The lessons are free for the most part; however, some classes may charge a fee for materials. Some classes require you to observe the lesson in advance. There is also the possibility that the information mentioned below has changed. Please inquire at the relevant class for further information before you attend the lesson.

As of December 2016

## ■ Naka Ward

### #1 Hiroshima Japanese Language Class

**PLACE:** ① Hiroshima Kokusai Kaigi-jo, 3F Kenshu-shitsu (1-5 Nakajima-cho, Naka-ku)  
② Hiroshima Kokusai Center (Hiroshima International Center)  
(Crystal Plaza 6F, 8-18 Naka-machi, Naka-ku)

**DATE & TIME:**

- ① Every Wednesday, 6:30pm – 8:00pm
- ① ② Every Saturday, 10:00am – noon

**TUITION:** Free

**ENROLLMENT:** Enroll any time you please

**INQUIRIES:** Hiroshima Japanese Language Class

Tel. 090-1339-1454

Email: [Hiroshima.nihongo@gmail.com](mailto:Hiroshima.nihongo@gmail.com)

**ACCESS:**

**Hiroshima Kokusai Kaigi-jo**

⇒ Located in Peace Memorial Park

- ① Take bus No.24 bound for Yoshijima Eigyocho (吉島営業所) and get off at Heiwa Kinen Koen (平和記念公園). It is a 3 min. walk from there.

- ② It is a 5 min. walk from the Gembaku Dome-mae (原爆ドーム前) Streetcar Stop.

**Hiroshima Kokusai Center**

(Hiroshima International Center)

⇒ It is a 5 min. walk from the Fukuro-machi (袋町) Streetcar Stop. Near the ANA Crowne Plaza Hotel Hiroshima

**URL:** <http://hiroshimakyoishitsu.wix.com/nihongo>

Hiroshima Nihongo Kyoshitsu

**Facebook:** ひろしま 日本語 教室 [Hiroshima Japanese Class](https://www.facebook.com/Hiroshima-Japanese-Class/)

### #2 Japanese Language Class Peace

**PLACE:** Hiroshima YMCA (7-11 Hatchobori, Naka-ku)

**DATE & TIME:** Every Saturday, 1:00pm – 3:00pm

**TUITION:** Free

**ENROLLMENT:** Enroll any time you please

**INQUIRIES:** Japanese Language Class Peace

Email: [ninjapanese.peace@gmail.com](mailto:ninjapanese.peace@gmail.com)

**ACCESS:** Hiroshima YMCA

- ① From Hiroshima Train Station (south exit), take any streetcar other than number 5 to Tatemachi (立町) stop. It is a 3 minute walk from there.

- ② From Hiroshima Bus Center, it is a 5 minute walk.

### #3 Nihongo Gakushu Kai

**PLACE:** Hiroshima Kokusai Kaigi-jo, 3F Kenshu-shitsu (1-5 Nakajima-cho, Naka-ku)

**DATE & TIME:** Every Thursday, 10:00 am – noon

**TUITION:** 100yen/month

**ENROLLMENT:** Enroll any time you please

**ACCESS:**

- ① Take bus No.24 bound for Yoshijima Eigyocho (吉島営業所) and get off at Heiwa Kinen Koen (平和記念公園). It is a 3 min. walk from there.
- ② It is a 5 min. walk from the Gembaku Dome-mae (原爆ドーム前) Streetcar Stop.

### #4 Japanese Language Class Kogusa

**PLACE:** Takeya Komin-kan

(3-15 Takara-machi, Naka-ku)

**DATE & TIME:** Every Wednesday, 1:00 pm – 4:00 pm

**TUITION:** 100yen/month

**ENROLLMENT:** Enroll any time you please

**INQUIRIES:** Takeya Komin-kan Tel. 082-241-8003

**ACCESS:** Take a bus bound for Daigaku Byoin (大学病院) and get off at Takeya-cho (竹屋町). It is a 5 min. walk from there, near the Fuji Grand supermarket.

### #5 Japanese Study Class for Returnees from China Chugoku Kikokusha no Kai

**PLACE:** Chuo Komin-kan

(24-36 Nishi-hakushima-cho, Naka-ku)

**DATE & TIME:** Every Monday, Wednesday and Saturday, 10:00 am – noon

**INQUIRIES:** Chuo Komin-kan Tel. 082-221-5943

**ACCESS:** Located near Moto-machi High School

- ① Take a bus bound for Yokogawa (横川) or Daigaku Byoin (大学病院) and get off at Nishi-hakushima (西白島). It is a 5 min. walk from there.
- ② It is a 5 min. walk from the Johoku (城北) Station (Astramline).



## #6 Harukaze

### Japanese Volunteer Group

**PLACE:** International Exchange Lounge (Hiroshima Kokusai Kaigi-jo, 1F) or schools that students are attending

**DATE & TIME:** Every Saturday, 10:00 am – noon  
at the International Exchange Lounge

**TUITION:** Free

**INQUIRIES:** Tel. 082-277-8330 (Sato)

Email: [harukaze@feel.ocn.ne.jp](mailto:harukaze@feel.ocn.ne.jp)

**ACCESS:** International Exchange Lounge

- ① Take bus No.24 bound for Yoshijima Eigyocho (吉島営業所) and get off at Heiwa Kinen Koen (平和記念公園). It is a 3 min. walk from there.
- ② It is a 5 min. walk from the Gembaku Dome-mae (原爆ドーム前) Streetcar Stop.

## ■ Minami Ward

### #7 Wednesday

#### Japanese Language Club

**PLACE:** Ryugakusei Kaikan  
Hiroshima City International House  
(1-1 Nishi-Kojin-machi, Minami-ku)

**DATE & TIME:** Every Wednesday, 10:00 am - noon

**TUITION:** Free

**ENROLLMENT:** Enroll any time you please

**INQUIRIES:** Ryugakusei Kaikan Tel. 082-568-5931

**ACCESS:** It is a 5 min. walk towards east from JR Hiroshima (広島) Station, next to the Ark Hotel.

### #8 Minna-no-Nihongo Class

**PLACE:** Ryugaku-sei Kaikan  
Hiroshima City International House  
(1-1 Nishi-Kojin-machi, Minami-ku)

**DATE & TIME:** Every Saturday, 1:30 pm – 3:30 pm

**TUITION:** Free

**ENROLLMENT:** Enroll any time you please

**INQUIRIES:** Ryugaku-sei Kaikan Tel. 082-568-5931

**ACCESS:** It is a 5 min. walk towards east from JR Hiroshima (広島) Station, next to the Ark Hotel.

### #9 Fureai Japanese Language Class

**PLACE:** Aosaki Komin-kan  
(1-12-7 Aosaki, Minami-ku)

**DATE & TIME:** Every Saturday, 7:00 pm – 9:00 pm

**TUITION:** Free

**ENROLLMENT:** Enroll any time you please

**INQUIRIES:** Aosaki Komin-kan Tel. 082-281-3802

**ACCESS:** It is a 5 min. walk from the JR Mukainada (向洋) Station (JR Sanyo or JR Kure Line).

## ■ Higashi Ward

### #10 Ushita Japanese Language Class

**PLACE:** Ushita Komin-kan  
(1-8-3 Ushita-shin-machi, Higashi-ku)

**DATE & TIME:** Every Wednesday, 1:30 pm – 3:30 pm  
Classes will be closed during summer holiday season (late July to the end of August), New Year's holiday season and on closed days of Ushita Komin-kan.

**TUITION:** Free

**ENROLLMENT:** Enroll any time you please

**INQUIRIES:** Ushita Komin-kan Tel. 082-227-0706

**ACCESS:** Get off at Ushita (牛田) Station (Astramline). It is a 5 min. walk from there. It is located next to the Higashi Ward Sports Center.

## ■ Nishi Ward

### #11 Minami-kanon Japanese Language Volunteer Group

**PLACE:** Minami-kanon Komin-kan  
(2-16-46 Kanon-shin-machi, Nishi-ku)

**DATE & TIME:** Every Saturday, 6:00 pm – 9:00 pm

**TUITION:** Free

**ENROLLMENT:** Enroll any time you please

**INQUIRIES:** Minami-kanon Komin-kan  
Tel. 082-293-1220

**ACCESS:** Take the No. 3 bus bound for Hiroshima Heliport or Marina Hop and get off at Kanon-shin-machi 3 cho-me (観音新町 3 丁目) Stop. It is a 5 min. walk from there.

### #12 Japanese Language Class Momiji

**PLACE:** Furuta Komin-kan  
(19-15 Furue-nishi-machi, Nishi-ku)

**DATE & TIME:** Every Friday, 10:00 am – noon

**TUITION:** 100yen/month

**ENROLLMENT:** Enroll any time you please

**INQUIRIES:** Furuta Komin-kan Tel. 082-272-9001

**ACCESS:** It is a 5 min. walk from the Furue (古江) Streetcar Stop (Miyajima Line).

### #13 IVC: Kokusai Volunteer Club ~ Nihongo

**PLACE:** Kusatsu Komin-kan  
(2-20-7 Kusatsu-higashi, Nishi-ku)

**DATE & TIME:** Every Wednesday, 10:00 am – 12:30 pm  
Every Saturday, 1:30 pm – 3:30 pm

**TUITION:** Free

**ENROLLMENT:** Enroll any time you please

**INQUIRIES:** Kusatsu Komin-kan Tel. 082-271-2576

**ACCESS:** It is a 2 min. walk from the Kusatsu (草津) Streetcar Stop (Hiroden Miyajima Line).

## ■ Asaminami Ward

### #14 Gion Japanese Language Class

**PLACE:** Gion Komin-kan

(1-13-26 Nishihara, Asaminami-ku)

**DATE & TIME:** Every Friday, 10:30 am – 1:00 pm  
Lesson schedule may change during school holiday seasons.

**TUITION:** Free

**ENROLLMENT:** Enroll any time you please

**INQUIRIES:** Gion Komin-kan Tel. 082-874-5181

**ACCESS:**

- ① It is a 5 min. walk from the JR Shimo-gion (下祇園) Station (JR Kabe Line).
- ② It is a 15 min. walk from the Gion Shin-bashi-kita (祇園新橋北) Station (Astramline).
- ③ It is a 5 min. walk from the NHK Housousyo-mae bus stop.

◆ Child-care service is available during the class. (Prior reservation is required.)

### #15 Yasu-higashi Japanese Language Class

**PLACE:** Yasu-higashi Komin-kan

(2-16-42 Yasu-higashi, Asaminami-ku)

**DATE & TIME:** Every Friday, 6:00 pm – 7:30 pm  
Because classes are held on a semester system, there are times when classes will not be held.

**TUITION:** Free

**ENROLLMENT:** Enroll whenever you please (during the term only)  
Inquire at the Yasu-higashi Komin-kan for more information including the term schedule.

**INQUIRIES:** Yasu-higashi Komin-kan  
Tel. 082-878-7683

**ACCESS:** It is a 5 min. walk from Yasu-higashi (安東) Station (Astramline).

### #16 Sato Japanese Language Class

**PLACE:** Sato Komin-kan (6-29-25 Midorii, Asaminami-ku)

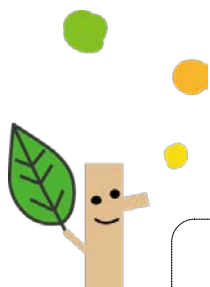
**DATE & TIME:** Every Wednesday, 9:30 am – 12:30 pm

**TUITION:** Free

**ENROLLMENT:** Enroll any time you please

**INQUIRIES:** Sato Komin-kan Tel. 082-877-5200

**ACCESS:** It is a 3 min. walk from the Shichiken-jaya (七軒茶屋) Station (JR Kabe Line).



### #17 Numata Japanese Language Class

**PLACE:** Numata Komin-kan

(5697 Tomo, Numata-cho, Asaminami-ku)

**DATE & TIME:** Every Saturday, 1:00 pm – 4:00 pm

**TUITION:** Free

**ENROLLMENT:** Enroll any time you please  
A lesson observation is required in advance. Inquire at the Numata Komin-kan.

**INQUIRIES:** Numata Komin-kan Tel. 082-848-0242

**ACCESS:**

- ① It is a 5 min. walk from the Obara (大原) Station (Astramline).
- ② At JR Hiroshima Station (south exit), take a bus bound for Ichiritsu Daigaku (市立大学) via Kokudo 54 and get off at Mitsubishi-danchi-iriguchi (三菱団地入口) (a 1 hour bus ride). It is a 8 min. walk from there.
- ③ At the Hiroshima Bus Center (Hiroshima Sogo Department Store, 3F), take a bus bound for Kusunoki-dai (くすの木台) via Kosoku 4-go-sen and get off at Obara Eki (大原駅) (a 30 min. bus ride). It is a 5 min. walk from there.

## ■ Asakita Ward

### #18 Magame Japanese Language Class

**PLACE:** Magame Komin-kan

(1-3-27 Magame, Asakita-ku)

**DATE & TIME:** Every Sunday, 10:00 am – noon  
Classes will be closed during New Year's holiday season.

**TUITION:** Free

**ENROLLMENT:** Enroll any time you please

**INQUIRIES:** Magame Komin-kan Tel. 082-842-8223

**ACCESS:** Take a bus bound for Obayashi Shako (大林車庫) via Koyo A Danchi (高陽A団地) and get off at Terasako Koen (寺迫公園). It is a 1 min. walk from there.

### #19 Kameyama

#### Japanese Language Class Amigo

**PLACE:** Kameyama Komin-kan

(3-16-16 Kameyama-minami, Asakita-ku)

**DATE & TIME:** Every Sunday, 10:00 am – 12:30 pm

**TUITION:** Free

**ENROLLMENT:** Enroll any time you please

**INQUIRIES:** Kameyama Komin-kan  
Tel. 082-815-1830

**ACCESS:** Take a bus bound for Katsuki (勝木) via Nijiyama Danchi (虹山団地) and get off at Nijiyama Danchi-shita (虹山団地下). It is a 5 min. walk from there.

## ■ Aki Ward

### #20 Nihongo Club

**PLACE:** Funakoshi Komin-kan

(5-22-23 Funakoshi, Aki-ku)

**DATE & TIME:** Every Saturday, 10:00 am – noon

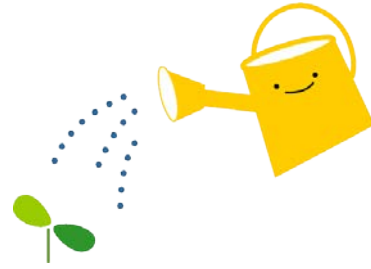
**TUITION:** Free

**ENROLLMENT:** Enroll any time you please

**INQUIRIES:** Funakoshi Komin-kan

Tel. 082-823-4261

**ACCESS:** It is a 7 min. walk from the JR Kaita-ichi (海田市)  
Station (JR Sanyo Line).



### ***INQUIRY: Hiroshima Peace Culture Foundation***

#### ***International Exchange Lounge***

*1-5 Nakajima-cho, Naka-ku, Hiroshima  
730-0811*

*E-mail: [golounge@pcf.city.hiroshima.jp](mailto:golounge@pcf.city.hiroshima.jp)*

*Tel. 082-247-9715 Fax. 082-242-7452*

*✦ Visit our website for information online. ✦*

*URL: <http://www.pcf.city.hiroshima.jp/ircd/Japanese/index.html>*





HIRO CLUB NEWS is published monthly and provides essential and entertaining information about life in Hiroshima City. It is available in print at the International Exchange Lounge, and online at our website:

<http://www.pcf.city.hiroshima.jp/ircd/joho/hiroclub%2001.html>

Selected information is also available in other languages including Chinese, Portuguese, Spanish and Korean.

HIRO CLUB NEWS は広島の生活情報やイベント等の情報を掲載している英語の月刊情報誌です。国際交流ラウンジにて配布しています。当課ホームページにも掲載しています。英語版の情報の一部を抜粋した中国語・ポルトガル語・スペイン語・ハングル版も作成しています。

\*\*\*\*\*

Edited and published by the Hiroshima Peace Culture Foundation

International Affairs Department, International Relations and Cooperation Division

Tel: (082) 242-8879, Fax: (082) 242-7452, E-mail: [internat@pcf.city.hiroshima.jp](mailto:internat@pcf.city.hiroshima.jp)

International Exchange Lounge

Tel: (082) 247-9715, E-mail: [golounge@pcf.city.hiroshima.jp](mailto:golounge@pcf.city.hiroshima.jp)

Website: <http://www.pcf.city.hiroshima.jp/ircd/english/index.html>

編集・発行 公益財団法人広島平和文化センター国際部国際交流・協力課

〒730-0811 広島市中区中島町1番5号