

# Seasonal Event Information

## February 2017



★ Event schedules are subject to change.  
Please contact event organizers before you go.

### Oyster Festivals



✿ Hiroshima is well known as the largest producer of oysters in Japan. Winter is the best season for oysters, so many oyster festivals are held at various places in Hiroshima every February. You can buy fresh oysters and also taste various oyster dishes at the festival venues. Most events will end when the oysters are sold out.

**Sat., February 4 & Sun., February 5**

#### Hiroshima Food Stadium & Oyster Festival

ひろしまフードスタジアム <sup>ふゆ じん ひろしまだい かきまつ</sup> 冬の陣～広島大牡蠣祭り～

**TIME:** 10:00am – 4:00pm

**PLACE:** The Open Space of the Former Municipal Baseball Stadium, Moto-machi, Naka-ku, Hiroshima City

**ACCESS:** Get off at Kamiya-cho-nishi or Genbaku Dome-mae streetcar stop.

**ADMISSION FEE:** Free

**INQUIRIES:** Executive Committee (RCC Broadcasting) 082-222-1133

☑ You can enjoy Hiroshima's winter food specialties at this festival.

**Sun., February 5**

#### Hiroshima Oyster Charity Bazaar <sup>ひろしま</sup> 広島かきチャリティバザール

**TIME:** From 10:00am onward

**PLACE:** In front of Volvo Cars Hiroshima Higashi, Deshio-cho, Minami-ku, Hiroshima City

**ACCESS:** From Minami Kuyakusho-mae Streetcar Stop (Line No.5), walking time to destination is 10 minutes.

**INQUIRIES:** *Hiroshima-shi Gyogyo Kyodo Kumiai* (Fisheries Cooperative Association) 082-251-5221

☑ You can buy fresh oysters and also taste various oyster dishes.

**Sun., February 5**

#### Etajima Oyster Festival <sup>えたじまし まつり</sup> 江田島市カキ祭

**TIME:** 10:00am – 2:00pm

**PLACE:** *Koyo Minato Koen* (park), Etajima City

**ACCESS:** Get on a ferry at Hiroshima Port and get off at Koyo Port (a 22 min. ferry ride). Walking time to destination: 3 minutes

**INQUIRIES:** *Shoko Kanko Ka*, Etajima City Hall 0823-43-1644

☑ You can buy fresh oysters and also taste various oyster dishes.

Please feel free to contact the International Exchange Lounge at 082-247-9715.

E-mail: [golounge@pcf.city.hiroshima.jp](mailto:golounge@pcf.city.hiroshima.jp)

February 2017

**Sun., February 5****Ondo Oyster Festival** おんど 音戸 かきまつり**TIME:** From 9:00am onward**PLACE:** Parking Lot next to *Ondo Gyogyo Kyodo Kumiai* (Fisheries Cooperative Association), Ondo-cho, Kure City**ACCESS:** Take a bus from JR Kure Station (JR Kure Line) and get off at Ondo Sanbashi (a 20 min. bus ride).**INQUIRIES:** *Ondo Gyogyo Kyodo Kumiai* (Fisheries Cooperative Association) 0823-52-2561

☑ You can buy fresh seafood and also taste various oyster dishes.

**Sat., February 11****Kure Suisan Festival** くれすいさん 呉 水産まつり**TIME:** From 10:00am onward**PLACE:** *Kure-shi Chuo Koen* (Kure Central Park), Kure City**ACCESS:** From JR Kure Station (JR Kure Line), walking time to destination is 10 minutes.**INQUIRIES:** Executive Committee 0823-25-3319**Sat., February 11 & Sun., February 12****Miyajima Oyster Festival** みやじま 宮島 かき祭り**TIME:** 10:00am – 3:00pm**PLACE:** In front of Miyajima Pier, Miyajima-cho, Hatsukaichi City**ACCESS:** Get off at JR Miyajima-guchi Station (JR Sanyo Line) or the Miyajima Streetcar Stop (Hiroden Streetcar Miyajima Line), then take a ferry to Miyajima.**INQUIRIES:** *Miyajima Kanko Kyokai* (Tourist Association) 0829-44-2011☑ Stage performances such as *taiko* (traditional Japanese drums) will be held at the venue.A ritual and *kagami-biraki* (cutting a *kagami-mochi*, a traditional Japanese new year's ornament consisting of two round rice cakes) will also be held on the 11<sup>th</sup>.**Sun., February 12****Ohno Oyster Festival** おおの 大野 かきフェスティバル**TIME:** 9:30am – 3:30pm**PLACE:** Boat Race Miyajima (*Miyajima Kyoteijo*, motorboat racetracks), Hatsukaichi City**ACCESS:** From JR Miyajimaguchi Station (JR Sanyo Line), walking time to destination is 8 minutes.**INQUIRIES:** *Hatsukaichi Kanko Kyokai* (Tourist Association), Ohno Branch 0829-30-3533

☑ There are no parking lots at the venue, so please use public transportation.

**Sun., February 12****Tahara Oyster Festival** たはら 田原 かきまつり**TIME:** From 9:00am onward**PLACE:** In front of *Tahara Gyogyo Kyodo Kumiai* (Fisheries Cooperative Association), Tahara, Ondo-cho, Kure City**ACCESS:** Take a bus from JR Kure Station (JR Kure Line) and get off at Tahara Gyokyo-mae (a 40 min. bus ride).**INQUIRIES:** *Tahara Gyogyo Kyodo Kumiai* (Fisheries Cooperative Association) 0823-52-2900

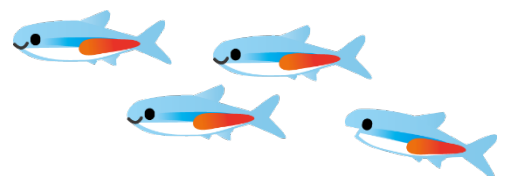
Please feel free to contact the International Exchange Lounge at 082-247-9715.

E-mail: [golounge@pcf.city.hiroshima.jp](mailto:golounge@pcf.city.hiroshima.jp)

February 2017

**Sun., February 19****Oyster Marché** かき 牡蠣 マルシェ**TIME:** 9:00am – 3:00pm**PLACE:** At the Hiroshima Minato Marché (open space between east and west terminal of Hiroshima Port), Minami-ku, Hiroshima City**ACCESS:** Take the No. 1, 3 or 5 streetcar bound for Hiroden Ujina or Hiroshima-ko and get off at the last stop, Hiroshima-ko.**INQUIRIES:** Hiroshima Minato Marché Office 082-255-6646**Sun., February 19****Takarajima Kurahashi Festival** たからじま 宝島 くらはしフェスティバル**TIME:** 9:00am – 2:00pm**PLACE:** Around *Katsurahama Onsen Kan*, Kurahashi-cho, Kure City**ACCESS:** Take a bus from JR Kure Station (JR Kure Line) and get off at Katsura-hama.**INQUIRIES:** Kure City Hall, Kurahashi Branch 0823-53-1111**Sun., February 19****Saka-cho Suisan Festival** さかちょうぎょきょうすいさん 坂町 漁協 水産 まつりチャリティバザール**TIME:** From 9:00am onward**PLACE:** Paty Fuji Saka (Shopping Mall), Heisei-gahama, Saka-cho, Aki-gun**ACCESS:** From JR Saka Station (JR Kure Line), walking time to destination is 3 minutes.**INQUIRIES:** *Saka-cho Gyogyo Kyodo Kumiai* (Fisheries Cooperative Association) 082-885-0009**Sun., February 26****The 27<sup>th</sup> Hiroshima City Suisan Festival** だい かいひろしましすいさん 第27回 広島市 水産 まつり**TIME:** 10:00am – 2:00pm**PLACE:** *Hiroshima-shi Suisan Shinko Center* (Fishery and Marine Products Promotion Center), Shoko Center, Nishi-ku, Hiroshima City**ACCESS:** ① From JR Itsukaichi Station (JR Sanyo Line), walking time to destination is 20 minutes.

② From JR Hiroshima Station, take a bus bound for Shoko Center and get off at Inokuchi-shako (a 60 min. bus ride). Walking time to destination: 5 minutes

**INQUIRIES:** *Suisan Ka*, Hiroshima City Hall 082-504-2252 (082-277-6609 on the event day)**Sun., February 26****Hayase Oyster Festival** はやせ 早瀬 かきまつり**TIME:** From 8:30am onward**PLACE:** Open Space in front of the former *Hayase Shogakko* (elementary school), Ondo-cho, Kure City**ACCESS:** Take a bus from JR Kure Station (JR Kure Line) and get off at Hayase Hoikusho-mae (a 35 min. bus ride).**INQUIRIES:** *Hayase Gyogyo Kyodo Kumiai* (Fisheries Cooperative Association) 0823-56-0470**Sun., February 26****Yasuura Oyster Festival** やすうら まつり 安浦 カキ 祭り**TIME:** From 10:00am onward**PLACE:** Greenpia Setouchi, Yasuura-cho, Kure City

Please feel free to contact the International Exchange Lounge at 082-247-9715.

E-mail: [golounge@pcf.city.hiroshima.jp](mailto:golounge@pcf.city.hiroshima.jp)

February 2017

**ACCESS:** From JR Yasuura Station (JR Kure Line), driving time to destination is 8 minutes.  
 ✧ Free shuttle bus service will be available from the station. Advance reservations are required for this service.

**INQUIRIES:** *Kaneda Suisan* 0823-84-2018 or 0823-84-5392  
 Greenpia Setouchi 0120-846-620 (toll free, 9:00am – 8:00pm)

## Events Held in Hiroshima City



**Fri., February 3**

### Setsubun-sai Festival (Yaikagashi Shinji) at Sumiyoshi Shrine

せつぶんさい やい か しんじ  
 節分祭 (焼 嗅 がし 神事)

**TIME:** From 2:00pm onward

**PLACE:** Sumiyoshi Shrine, Sumiyoshi-cho, Naka-ku

**ACCESS:** ① Take the No. 24 bus and get off at Sumiyoshi-cho. Walking time to destination: 5 minutes  
 ② Take the No. 3, 6, or 10 bus and get off at Kako-machi. Walking time to destination: 3 minutes

**INQUIRIES:** Sumiyoshi Shrine 082-241-0104

- ☐ This is a traditional ritual on *Setsubun* day (February 3); *miko*, female attendants of the shrine, will grill one thousand sardine heads and fan smoke with a large paper fan to drive away evil spirits. After the ritual, you can take home a grilled sardine's head on a holly branch, which is a *Setsubun* lucky charm. *Mamemaki*, or "bean-throwing", will also be held.

**Fri., February 3**

### Setsubun-sai Festival at Hiroshima Gokoku Shrine

せつぶんさい ひろしまごこくじんじや  
 節分祭 (広島護国神社)

)

**TIME:** Ritual: From 3:30pm onward; *Mamemaki* (bean-throwing): From 4:00pm onward

**PLACE:** Hiroshima Gokoku Shrine, Moto-machi, Naka-ku

**ACCESS:** ① From Kamiya-cho-higashi Streetcar Stop or the Hiroshima Bus Center, walking time to destination is 8 minutes.  
 ② From JR Shin-Hakushima Station (JR Sanyo Line), walking time to destination is 15 minutes.

**INQUIRIES:** Hiroshima Gokoku Shrine 082-221-5590

- ☐ There will be a ritual, shooting arrows & *mame-maki* (bean-throwing) for good luck.

**Sun., February 5 & 19**

### Hiroshima Minato Marché ひろしまみなとマルシェ

**TIME:** 9:00am – 3:00pm

**PLACE:** Open Space between East and West Terminal of Hiroshima Port, Minami-ku

**ACCESS:** Take the No. 1, 3 or 5 streetcar bound for Hiroden Ujina or Hiroshima Port and get off at the last stop, Hiroshima Port.

**INQUIRIES:** Hiroshima Minato Marché Office 082-255-6646

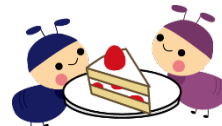
- ☐ You can buy and taste locally-grown fresh vegetables and other food products at the marché.
- ☐ Oyster Marché will also be held on the 19<sup>th</sup> (see the previous page for more information).



Please feel free to contact the International Exchange Lounge at 082-247-9715.

E-mail: [golounge@pcf.city.hiroshima.jp](mailto:golounge@pcf.city.hiroshima.jp)

February 2017

**Sun., February 19****Tea Ceremony at Fudoin Temple**きどううらせんけたんこうかい ひろしまだいいちせいねんぶちやかい  
茶道裏千家淡交会 広島第一青年部茶会**TIME:** 9:30am – 3:00pm**PLACE:** Fudoin Temple, Ushita-shin-machi, Higashi-ku**ACCESS:** From *Astramline* Fudoin-mae Station, walking time to destination is 2 minutes.**FEE FOR TEA CEREMONY:** ¥700**INQUIRIES:** *Sado Urasenke Tanko Kai, Hiroshima Dai-ichi Seinen-bu* 090-1355-8492**Sun., March 19****“Sweets” Marathon in Hiroshima**ぜんこく ひろしま  
全国スイーツマラソン in 広島**TIME:** 8:00am – 5:00pm**PLACE:** *Hiroshima Minato Koen* (park), Minami-ku**ACCESS:** Take the No. 1, 3 or 5 streetcar bound for Hiroshima Port and get off at the last stop, Hiroshima Port.**PARTICIPATION FEE:** High school students and up-¥6,000  
Junior high and elementary school students-¥3,000**HOW TO APPLY:** Applications are accepted online.(check the HP (<http://www.sweets-marathon.jp>) for more information.)

Deadline for application – Mon., Feb. 20, 2017

◇ In the event that all application slots are filled, applications will be closed before Feb. 20.

**INQUIRIES:** Sweets Marathon Office 03-6848-7284 (Mon. – Fri., 10:00am – 6:00pm)HP: <http://www.sweets-marathon.jp>

☐ This is an event in which you can enjoy both running a marathon and eating sweets. “Sweets stations” will be set up instead of water stations on the marathon course. You can eat as much as you like of various kinds of small-sized sweets at each station. Sweets kiosks and Hiroshima Minato Marché will also be set up.

**Events Held on Miyajima****Fri., February 3****Setsubun-sai Festival in Miyajima**せつぶんさい  
節分祭**TIME:** From 11:00am onward**PLACE:** Daishoin Temple, Miyajima**ACCESS:** Get off at JR Miyajima-guchi Station (JR Sanyo Line) or Miyajima Streetcar Stop (Hiroden Streetcar Miyajima Line), then take a ferry to Miyajima.**INQUIRIES:** Daishoin Temple 0829-44-0111☐ There will be a ritual & *mame-maki* (bean-throwing) for good luck.**Fri., February 3****Hoshi Matsuri at Daiganji Temple in Miyajima (Ritual)**ほしまつ  
星祭り**TIME:** From 6:30pm onward**PLACE:** Daiganji Temple, Miyajima**ACCESS:** Get off at JR Miyajima-guchi Station (JR Sanyo Line) or Miyajima Streetcar Stop (Hiroden Streetcar Miyajima Line), then take a ferry to Miyajima.**INQUIRIES:** Daiganji Temple 0829-44-0179

Please feel free to contact the International Exchange Lounge at 082-247-9715.

E-mail: [golounge@pcf.city.hiroshima.jp](mailto:golounge@pcf.city.hiroshima.jp)

February 2017

**Sun., February 5****Ju-san-mairi Kodomo Mame-maki (Bean-throwing)**じゅうさんまい こどもまめまき  
十三参り 子供豆まき**TIME:** From 11:00am onward**PLACE:** Daishoin Temple, Miyajima**ACCESS:** Get off at JR Miyajima-guchi Station (JR Sanyo Line) or the Miyajima Streetcar Stop (Hiroden Streetcar Miyajima Line), then take a ferry to Miyajima.**INQUIRIES:** Daishoin Temple 0829-44-0111

☑ 12-year-old-children who were born in the year of the Rooster (which is also this year in the Chinese zodiac) will throw beans in a “*Mame-maki*” ritual to pray for happiness throughout the year.

**Sat., February 11 & Sun., February 12****The 33<sup>rd</sup> Miyajima Oyster Festival**だい かいみやじま まつ  
第33回 宮島 かつ祭り**TIME:** 10:00am – 3:00pm**PLACE:** In front of Miyajima Pier, Miyajima-cho, Hatsukaichi City**ACCESS:** Get off at JR Miyajima-guchi Station (JR Sanyo Line) or the Miyajima Streetcar Stop (Hiroden Streetcar Miyajima Line), then take a ferry to Miyajima.**INQUIRIES:** *Miyajima Kanko Kyokai* (Tourist Association) 0829-44-2011

☑ Stage performances such as *taiko* (traditional Japanese drums) will be held at the venue.

A ritual and *kagami-biraki* (cutting a *kagami-mochi*, a traditional Japanese new year's ornament consisting of two round rice cakes) will also be held on the 11<sup>th</sup>.

**Wed., March 8****Memorial Service for Used Kitchen Knives**ほうちょうくよう  
庖丁 供養**TIME:** From 11:00am onward**PLACE:** Daishoin Temple, Miyajima**ACCESS:** Get off at JR Miyajima-guchi Station (JR Sanyo Line) or the Miyajima Stop (Hiroden Streetcar Miyajima Line), then take a ferry to Miyajima.**INQUIRIES:** Daishoin Temple 0829-44-0111

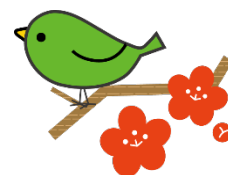
☑ This is a ritual to show gratitude for well-used kitchen knives.

**Events Held Outside of Hiroshima City****Sat., Sun. & national holidays****Sake Brewery Opening**ようこそ じょう か まちさいじょう  
ようこそ 醸 華 町 西条**PLACE:** Sake Breweries, Higashihiroshima City**ACCESS:** Get off at JR Saijo Station (JR Sanyo Line).**FEE:** Free**INQUIRIES:** *Saijo Sakagura-dori Kanko Annai-jo*

Tel. &amp; Fax 082-421-2511 (10:00am – 4:00pm, closed on Mondays)

☑ Some sake breweries open to the public on Sat., Sun. & national holidays. Signboards with the words

“ようこそ じょう か まちさいじょう” (“*Yokoso Jokamachi Saijo*”) will be placed in front of the opened breweries.

**Fri., February 3****Setsubun-e at Saikoji Temple**さいこくじ せつぶんえ  
西國寺 節分会**TIME:** 11:00am – 12:30pm**PLACE:** Saikokuji Temple, Onomichi City**ACCESS:** ① From JR Onomichi Station (JR Sanyo Line), walking time to destination is 20 minutes.

② From JR Onomichi Station (JR Sanyo Line), take a bus going east and get off at Saikokuji-shita. Walking time to destination: 5 minutes

**INQUIRIES:** Saikokuji Temple 0848-37-0321

Please feel free to contact the International Exchange Lounge at 082-247-9715.

E-mail: [golounge@pcf.city.hiroshima.jp](mailto:golounge@pcf.city.hiroshima.jp)

February 2017



☐ There will be a ritual, *taiko* (traditional Japanese drum) performance and *mame-maki* (bean-throwing) for good luck.

### Fri., February 3

#### Setsubun-sai at Kibitsuhiro Shrine (Ikkyu Shrine) きびつひこじんじや いっきゅうじんじや せつぶん 吉備津彦神社 (一宮神社) 節分

さい  
祭

**TIME:** Ritual: From 7:30pm onward

*Mame-maki* (bean-throwing): 8:00pm – 8:30pm

**PLACE:** Kibitsuhiro Shrine (Ikkyu Shrine), Onomichi City

**ACCESS:** From JR Onomichi Station (JR Sanyo Line), walking time to destination is 10 minutes.

**INQUIRIES:** Kibitsuhiro Shrine 0848-22-5545

### Sun., February 5

#### Onabe Festival at Kure Portpia Park くれ おおなべ 呉 ポー大鍋まつり

**TIME:** 10:00am – 3:00pm

**PLACE:** Kure Portpia Park, Kure City

**ACCESS:** Get off at JR Kure-Portpia Station (JR Kure Line).

**INQUIRIES:** *Kure Portpia Park Tomo no Kai* 0823-38-0560

☐ *Nabemono*, a one-pot dish, is eaten from a large pot and is a typical winter food in Japan. You can taste various kinds of *nabemono* at the festival.

### Fri., February 10

#### Sakagura Walking Tour (Free) さかぐら 酒蔵のまち てくてくガイド

**TIME:** Tour will start on an as-needed basis between 10:00am and 11:00am.

**MEETING PLACE:** *Saijo Sakagura-dori Kanko Annai-jo* (Tourist Information Center), Higashihiroshima City

**ACCESS:** Get off at JR Saijo Station (JR Sanyo Line).

**PARTICIPATION FEE:** Free

**INQUIRIES:** *Saijo Sakagura-dori Kanko Annai-jo* Tel. & Fax 082-421-2511

☐ A volunteer guide will show you *Sakagura-dori* (*Sake* Brewery Street). During the tour you will be able to taste *sake* and the purified water that is used to make it.

☐ A regular guided tour (fee-based) is also held every day except on the 10<sup>th</sup>. An English speaking guide is available. Please contact the *Saijo Sakagura-dori* Tourist Information Center in advance.

### February 10 (Fri.), 11 (Sat.), 12 (Sun.) & 13 (Mon.)

#### Iroha Antique Market おのみちだいこつとうさい 尾道大骨董祭 (いろは こつとうさい 骨董祭)

**TIME:** 8:00am – 4:00pm ✧ 8:00am – noon on Monday

**PLACE:** *Tennen Onsen Onomichi Fureai no Sato* (spa facilities), Mitsugi-cho, Onomichi City

**ACCESS:** ① From JR Shin-Onomichi Station (JR Sanyo *Shinkansen* Line), driving time by taxi to destination is 25 minutes.

② From Onomichi-kita I.C. on the Chugoku Yamanami Expressway, driving time to destination is 10 minutes.

③ Take a free shuttle bus to the spa from JR Higashi Onomichi Station (JR Sanyo Line).

Departure Time (one round service a day)

• JR Higashi Onomichi Station: 8:55am

• Spa: 3:10pm

**INQUIRIES:** *Iroha* Antique Market Office 090-3155-8229



Please feel free to contact Goulounge Lounge at 082-247-9715.

E-mail: [goulounge@pcf.city.hiroshima.jp](mailto:goulounge@pcf.city.hiroshima.jp)

February 2017

Fri., February 10 – Mon., March 20

**Hina Doll Presentation in Takehara**

たけはら 町並み 雛めぐり

**TIME:** Open hours vary according to places.**PLACE:** Around the Special Directory of Historical Buildings Area in Takehara City**ACCESS:** From JR Takehara Station (JR Kure Line, walking time to destination 1 is 15 minutes).**ADMISSION FEE:** Some places will require an admission fee.**INQUIRIES:** Takehara *Kanko Kyokai* (Tourist Association) 0846-22-4331

☐ March 3<sup>rd</sup> is *Hina Matsuri* (*Hina Festival*), a day to wish girls good health and a long life. Most families with daughters celebrate by displaying *hina* dolls. The dolls are offered sweetened puffed rice (*hina-arare*), white *sake* containing rice malt (*shirozake*), colored lozenge-shaped rice cakes (*hishi-mochi*), etc. (Abstracted from The Japanese-English Dictionary for Conversation about Japan, p.578, Obunsha)

☐ Antique *hina* dolls will be on display at this event. Various events will also be held during the event period.

Fri., February 10 – Sun., February 12

**Mihara Shinmei-ichi Market**みはらしんめいいち  
三原 神明市**TIME:** 9:00am – 8:00pm**PLACE:** Around the north area of JR Mihara Station, Mihara City**ACCESS:** Get off at JR Mihara Station (JR Sanyo Line).**INQUIRIES:** *Ukishiro Lobby* Tourist Information Center 0848-67-5877

☐ This is a festival with a history of 440 years. Stalls selling plants, *daruma* (Dharma dolls), etc. will be set up.

Sat., February 11 &amp; Sun., February 12

**Umemi (Plum Blossoms-viewing) Tea Ceremony at Shotoen**しょうとうえん うめみ  
松濤園 梅見ちやかい  
茶会**TIME:** 9:30am – 4:00pm**PLACE:** Shotoen, Shimokamagari-cho, Kure City**ACCESS:** Take a bus bound for Kamagari from JR Hiro Station (JR Kure Line) and get off at San-no-se.

Walking time to destination: 3 minutes

**FEE:** Free for the tea ceremony ✧ Admission fee for Shotoen is required.

( Adults & University students - ¥800, High school students - ¥480 )  
 ( Junior high & Elementary school students - ¥320 )

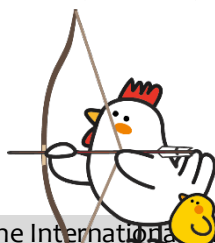
**INQUIRIES:** *Shotoen* 0823-65-2900

☐ A tea-making demonstration will only be held on the 11<sup>th</sup>.

Sun., February 12

**Oyumi-shinji (Ritual) at Nunakuma Shrine**ぬなくまじんじや おゆみしんじ  
沼名前神社 お弓神事**TIME:** From 2:00pm onward**PLACE:** Nunakuma Shrine, Tomo-cho, Fukuyama City**ACCESS:** Take a Tomotetsu bus from JR Fukuyama Station (JR Sanyo Line) and get off at Tomo-no-ura (a 30 min. bus ride). Waking time to destination: 10 minutes**INQUIRIES:** Nunakuma Shrine 084-982-2050

☐ This is a ritual to pray for good health and fortune throughout the year by shooting an arrow at a target. This ritual is designated as one of Fukuyama City's intangible folklore cultural assets.



Please feel free to contact the International Exchange Lounge at 082-247-9715.

E-mail: [golounge@pcf.city.hiroshima.jp](mailto:golounge@pcf.city.hiroshima.jp)

February 2017



**Sun., February 12****Shinmeisai Festival at Futamado** ふたまたど しんめいまつり  
二窓の神明祭**TIME:** From 2:00pm onward

◇ “Shinmei-san” is an object 20 meters high made with bamboo and wood. It will be lit on fire at 5:30pm.

**PLACE:** *Tadanoumi Higashi Shogakko* (elementary school), Takehara City**ACCESS:** From JR Tadanoumi Station (JR Kure Line), walking time to destination is 20 minutes.**INQUIRIES:** Komarui Shrine 0846-26-0227

▣ This is a fire festival with more than 400 years of tradition.

**Sat., February 18****Ofuku Biraki-sai & Hadaka Matsuri** おふくびらきさい はだかまつり  
御福開祭・はだか祭り**TIME:** *Ofuku Biraki-sai* (ritual) – From 7:00pm onward / *Hadaka Matsuri* – From 9:00pm onward**PLACE:** Kui Inari Shrine, Mihara City**ACCESS:** ① From JR Mihara Station (JR Sanyo Line), take a bus bound for Kozan and get off at Koritsu Kui Shinryojo-mae (a 30 min. bus ride). Walking time to destination: 5 minutes

② From Mihara Kui I.C. (Sanyo Expressway), driving time to destination is 15 minutes.

**INQUIRIES:** Kui Inari Shrine 0847-32-6029▣ *Hadaka Matsuri* is a festival where a group of young men wearing only loincloths rush into the temple after purifying their bodies in the river. Then, they scramble for a pair of *shingi* or *fukugi* (sacred wands) thrown down into the darkness by a temple priest from the upper floor of the temple. The person who catches a sacred wand is assured happiness throughout the year.▣ *Hadaka Matsuri* is a traditional Japanese festival. It is held in various areas of Japan during this season. *Hadaka Matsuri* at Kui Inari Shrine is the only *Hadaka Matsuri* held in Hiroshima Prefecture.**Sat., February 18 – Mon., March 20****Hina Matsuri (Girl's Festival) in Tomo** とも まちなみ まつり  
鞆・町並ひな祭**TIME:** 10:00am – 4:00pm ◇ Open hours vary according to facilities.◇ *Tomo-no-ura Rekishi Minzoku Shiryō Kan* (museum): 9:00am – 5:00pm**PLACE:** Tomo-cho, Fukuyama City**ACCESS:** Take a Tomotetsu bus from JR Fukuyama Station (JR Sanyo Line) and get off at Tomo-no-ura (a 30 min. bus ride).**ADMISSION FEE:** Free ◇ Admission Fee for *Tomo-no-ura Rekishi Minzoku Shiryō Kan* is required: Adults & University students-¥150, High school students and under-Free**INQUIRIES:** Executive Committee 080-5614-2778*Tomo-no-ura Rekishi Minzoku Shiryō Kan* 084-982-1121▣ March 3<sup>rd</sup> is *Hina Matsuri* (*Hina Festival*), a day to wish girls good health and a long life. Most families with daughters celebrate by displaying *hina* dolls. The dolls are offered sweetened puffed rice (*hina-arare*), white sake containing rice malt (*shirozake*), colored lozenge-shaped rice cakes (*hishi-mochi*), etc. (Abstracted from The Japanese-English Dictionary for Conversation about Japan, p.578, Obunsha)▣ Antique *hina* dolls will be on display at this event.**Sat., February 18 – Mon., March 20****Hina Matsuri (girl's festival) in Joge-cho** てんりょうじょうげ  
天領上下ひなまつり**PLACE:** *Shirakabe no Machinami* (Shopping Street), Joge-cho, Fuchu City**ACCESS:** From JR Joge Station (JR Fukuen Line), walking time to destination is 3 minutes.**INQUIRIES:** Executive Committee 0847-62-3999▣ March 3<sup>rd</sup> is *Hina Matsuri* (*Hina Festival*), a day to wish girls good health and a long life. Most families with daughters celebrate by displaying *hina* dolls. The dolls are offered sweetened puffed rice (*hina-*

Please feel free to contact the International Exchange Lounge at 082-247-9715.

E-mail: [golounge@pcf.city.hiroshima.jp](mailto:golounge@pcf.city.hiroshima.jp)

February 2017

*arare*), white sake containing rice malt (*shirozake*), colored lozenge-shaped rice cakes (*hishi-mochi*), etc. (Abstracted from The Japanese-English Dictionary for Conversation about Japan, p.578, Obunsha). *Hina* dolls will be on display at this event.

- ▣ A market area, “*Deko-ichi*”, will be held on Mar. 4 & 5.
- ▣ *Tezukuri-ichi* (handmade market) will be held on Mar. 18 & 19.

### Sun., February 19

## The 14<sup>th</sup> International Exchange Festa in Kure だい かいこくさいこうりゅう 第14回 国際交流フェスタ in くれ

**TIME:** 1:00pm – 4:00pm

**PLACE:** *Kure Shiyakusho* (Kure City Hall), Kure City

**ACCESS:** From JR Kure Station (JR Kure Line), walking time to destination is 15 minutes.

**INQUIRIES:** *Kure City Kokusai Kouryu Kyokai* (Kure International Exchange Association)

0823-25-5607 E-mail: kure-ies@eagle.ocn.ne.jp

### Mon., February 20

## Hatsuka-no-ichi Market はつか いち 廿日の市



**TIME:** 8:30am – 10:30am

**PLACE:** *Shimin Plaza* (in front of Hatsukaichi City Hall), Hatsukaichi City

**ACCESS:** From Hatsukaichi Shiyakusho-mae (Hiroden Streetcar Miyajima Line), walking time to destination is 10 minutes.

**INQUIRIES:** *Hatsukaichi Kanko Kyokai* (Tourist Association) 0829-31-5656

### Fri., March 3

## Mimi (ear) Festival & Memorial Service for Dolls みみまつ にんぎょうくようさい 耳祭り・人形供養祭

**TIME:** From 1:30pm onward

**PLACE:** Mimigo Shrine (inside Oyama Shrine), Innoshima Habu-cho, Onomichi City

**ACCESS:** From Innoshima-kita I.C. (*Shimanami Kaido Expressway*), driving time to destination is 10 minutes.

**INQUIRIES:** Oyama Shrine 0845-22-0827

- ▣ March 3<sup>rd</sup> is ear day in Japan. The God of Ears (“*Mimigo-sari*”) is enshrined in Mimigo Shrine, which is rare in Japan. A ritual will be held to pray for people who have ear disorders to get well. A memorial service for dolls will also be held.

### Sun., April 16 ☛ A pre-event will be held on April 15.

## Grand Tour Setouchi 2017 (cycling event) グラン・ツール・せとうち 2017

**SCHEDULE:** Apr. 15: Pre-event & Registration (10:00am – 5:00pm)

Apr. 16: Opening Ceremony & Cycling

**PLACE:** *Setouchi Shimanami Kaido*, Onomichi City

### START & GOAL:

- ◆ 140km, 110km & 70km course: *Mukaishima Undo Koen* (park), Onomichi City  
Schedule: Opening ceremony: From 7:00am onward  
Start: 7:30am / Finish: 5:00pm
- ◆ 40km course: *Manda Hakkou Company*, Onomichi City  
Schedule: Opening ceremony: From 9:30am onward  
Start: 10:00am / Finish: 4:00pm

### ACCESS:

***Mukaishima Undo Koen:*** From Mukaishima I.C. on the Shimanamikaido Expressway, driving time to destination is 5 minutes.

***Manda Hakkou Company:*** From Innoshima-kita I.C. on the Shimanamikaido Expressway, driving time to destination is 10 minutes.

Please feel free to contact the International Exchange Lounge at 082-247-9715.

E-mail: golounge@pcf.city.hiroshima.jp

February 2017

**HOW TO PARTICIPATE:**

Enrollment will be accepted online from Sat., December 17, 2016 to Sun., February 26, 2017.

◇ Enrollment will be closed when all 2,300 spots are full.

**ELIGIBILITY FOR PARTICIPATION:**

- Those who are elementary school students and up.
- Those who have the physical strength to complete the full distance of each course within the time limit.
- Those who agree to abide by event rules.
- Those who finish registration on April 15.  *Registration will NOT be accepted after April 15.*

PLACE: Paul Bell Square, in front of JR Onomichi Station

TIME: 10:00am – 5:00pm

**COURSE & PARTICIPATION FEE:**

- Shimanami Master Course (140km): ¥9,000      ◆ 800 people will be accepted.
- Shimanami Middle Course (110km): ¥8,000      ◆ 600 people will be accepted.
- Shimanami Short Course (70km): ¥7,000      ◆ 600 people will be accepted.
- Shimanami Happy Course (40km): ¥5,500      ◆ 300 people will be accepted.

**INQUIRIES:** Grand Tour Setouchi Office (inside Hiroshima TV)

082-249-1218 (Mon. – Fri., 10:00am – 6:00pm) E-mail: cycle@htv.jp

HP: <http://www.htv.jp/grandtour2017/>

- ▣ Setouchi Shimanami Kaido is the expressway connecting six islands in the Seto Inland Sea with seven bridges between Onomichi City (Hiroshima Pref.) and Imabari City (Ehime Pref.).
- ▣ There will be aid stations where drinks and light meals are available.



Please feel free to contact the International Exchange Lounge at 082-247-9715.

E-mail: [golounge@pcf.city.hiroshima.jp](mailto:golounge@pcf.city.hiroshima.jp)

February 2017