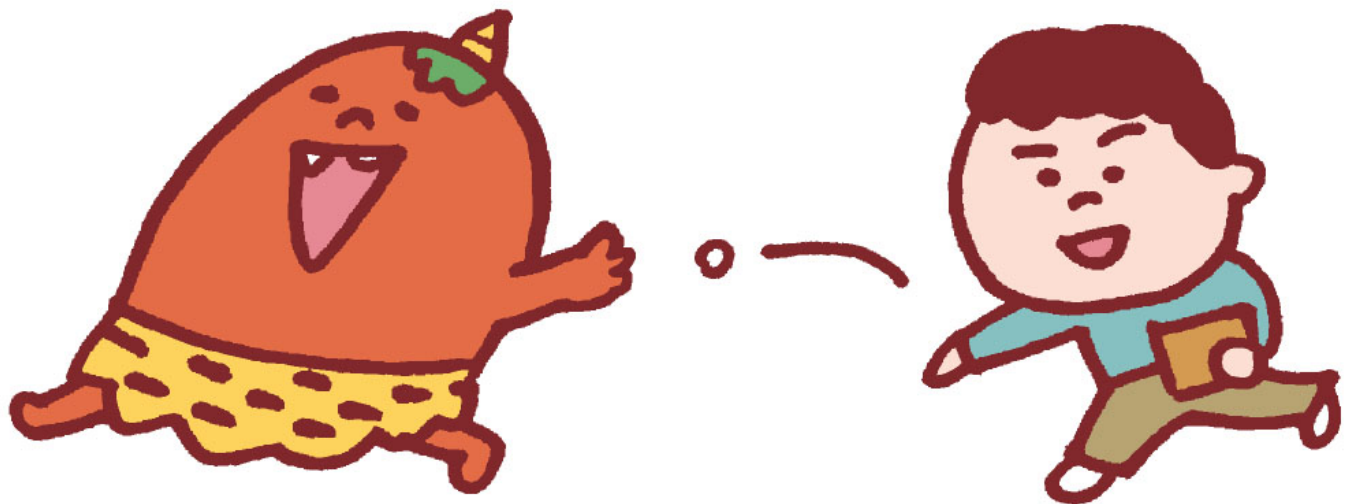


Hiro Club News



For your cultural life in Hiroshima

節分 *setsubun*

It is a bean-throwing (*mame-maki*) ceremony. The word *setsubun* was originally applied to the day preceding the traditional beginning of the day before the first day of spring (*risshun*), which falls on February 3rd or 4th. That is just the time when the lowest temperatures are recorded. After *setsubun* signs of spring gradually begin to appear.

On the evening of February 3, people scatter handfuls of parched soybeans inside and outside the house to chase demons out and summon good luck. As the beans are thrown, good luck is invited in and bad luck driven out with much shouting and noise, and cries of "*Fuku-wa-uchi, Oni-wa-soto*" (=In with good luck, out with the devil). In some area they apparently string the heads of grilled sardine on a branch and fix it to the door. That's also done to drive off evil spirits. It is also customary to eat the same number of beans as one's age and to offer a prayer for good fortune at home. (Abstracted from The Japanese-English Dictionary for Conversation about Japanese, pp. 382-383, Obunsha & A Cultural Dictionary of Japan, p. 264, The Japan Times)

Bean-throwings are held not only at home but also held at shrines and temples. In some shrine and temple compounds, well-known personalities such as sumo wrestlers are invited to scatter the beans of the good luck for all present. Usually, these people are those born under that year's zodiac sign.

Bean-throwing ceremonies will also be held at some shrines such as Gokoku Shrine and Sumiyoshi Shrine in Hiroshima City (see the Seasonal Event Information section for more information). Please take this opportunity to enjoy a traditional Japanese event.

February 2017

February 2017

- ❖ *City Office Notices*
- ❖ *Hiroshima Peace Culture Foundation News*
- ❖ *Movie Theaters*
- ❖ *Bilingual TV Programs*
- ❖ *Concerts & Plays*
- ❖ *Museums*
- ❖ *Sports*
 - *Hiroshima Toyo Carp Schedule 2017*
 - *Sanfrece Hiroshima FC Game Schedule 2017*
 - *Hiroshima Dragonflies 2016 – 2017 B2 League*
- ❖ *Events*
 - *Seasonal Event Information*
 - *Municipal Facilities*
- ❖ *Lounge & Library*
 - *Library News*
 - *Damaged & Outdated Books from*
Int'l Exchange Lounge for free
 - *Trio-phone Service*
(multilingual interpretation over the telephone)
 - *Assisting with International Cooperation*
 - *Garbage Disposal*
- ❖ *Japanese Language Classes in Hiroshima City*

***Hiroshima Peace Culture Foundation
International Exchange Lounge***

1-5 Nakajima-cho, Naka-ku, Hiroshima 730-0811

E-mail: golounge@pef.city.hiroshima.jp

Tel. 082-247-9715 Fax. 082-242-7452

★ Visit the HIRO CLUB NEWS WEBSITE for information online. ★

URL: <http://www.pef.city.hiroshima.jp/ircd/english/hiroclubnews/index.html>

City Office Notices

City Office Notices contains selected information from the Hiroshima City Newsletter, *ひろしま市民と市政 Hiroshima Shimin to Shisei*. City Office Notices is published twice a month and available in print at the International Exchange Lounge, and online at our website:
<http://www.pcf.city.hiroshima.jp/ircd/english/hiroclubnews/index.html>

February 1, 2017

Topics

- * * Municipal Housing Available
- * * Special Purpose Allowance
- * * Counseling on Housing
- * * Get Involved in Sports Event Volunteering
- * * FDMA Band Concert & Fire Drill
- * * Temporary Closure

Municipal Housing Available

市営住宅入居者募集(P5)

Qualification guidelines and the list of municipal houses are available at the *Kenchiku Ka* (Architecture Division) of your local ward office, branch office or at the Citizens Service Corner.

TO APPLY: Please apply at one of the following divisions or prefectural associations of building maintenance between Tuesday, February 7 and Thursday, February 9.

INQUIRIES: *Kenchiku Ka* (Architecture Division), Ward Office

Naka	504-2578	541-3835	Asaminami	831-4954	877-2299
Higashi	568-7744	262-6986	Asakita	819-3937	815-3906
Minami	250-8959	252-7179	Aki	821-4928	822-8069
Nishi	532-0949	232-9783	Saeki	943-9744	923-5098

Special Purpose Allowance

臨時福祉給付金(経済対策分)を支給します(P3)

To those eligible households, the City will mail application forms for the special purpose allowance, *Rinji Fukushi Kyufukin* (臨時福祉給付金, temporary welfare benefit) in mid-February. If you receive these forms, please fill them out and return them to the City. You must apply in order to receive the allowance. For details, including application requirements, please contact the Information Service Center (Toll Free 0120-082-232).

Edited and published by the Hiroshima Peace Culture Foundation
 International Affairs Department, International Relations and Cooperation Division
 Tel: (082) 242-8879, Fax: (082) 242-7452, E-mail: internat@pcf.city.hiroshima.jp
 International Exchange Lounge
 Tel: (082) 247-9715, E-mail: golounge@pcf.city.hiroshima.jp
 Website: <http://www.pcf.city.hiroshima.jp/ircd/english/index.html>
 編集・発行 公益財団法人広島平和文化センター国際部国際交流・協力課

ELIGIBILITY: Those who are exempted from municipal tax (The per capita equalization tax) and who are registered as a resident of Hiroshima City on January 1, 2016

(Except for tax-payer's dependents and those who receive livelihood protection assistance)

ALLOWANCE: 15,000 yen per person

APPLICATION PERIOD: Between mid-February and the end of July

INQUIRIES: Please call 0120-082-232 (Toll Free / 8:30 am – 5:15 pm (Closed on Saturdays, Sundays and national holidays) / Services are available in Japanese only.)

Chiiki Fukushi Ka (Local Welfare Services Division) Tel. 504-2766 Fax. 504-2169

Counseling on Housing

住まいの個別相談会 (P6)

DATE & TIME: 1. Sunday, February 26, 4:00 pm – 7:00 pm
2. Saturday, March 11, 1:00 pm – 6:00 pm*

*A seminar on the inheritance of house and issues of vacant houses will be held from 1:00 pm. Counseling will be start from 3:00 pm.

PLACE: *Gojinsha Hito-Machi Plaza* (6-36 Fukuro-machi, Naka-ku)

COUNSELING: Selling a house, renting, inheritance, sorting thorough household items, or home redesign
Counseling is only available in Japanese.

RESERVATIONS: Call 243-9530

before Friday, February 24 for the counseling on February 26,
before Friday, March 10 for the counseling on March 11.

The first 36 people for each available counseling day will be accepted.

INQUIRIES: *Jutaku Seisaku Ka* (Housing Policy Division) Tel. 504-2292 Fax. 504-2308

Get Involved in Sports Event Volunteering

スポーツイベントボランティア募集 (P5)

WHO: Those who are 15+ years old (Junior high school students are not eligible)

PERIOD: From April to March, 2018 (An explanatory meeting will be held in March, 2017.)

ACTIVITIES: Volunteering at sports events held in Hiroshima City.

TO APPLY: Send an ofuku-hagaki (pre-paid reply postcard) with participants' names, address, telephone number, age, gender, reasons for applying and the subject name (

Sports Event Volunteer Boshu Sports Kyokai
スポーツイベントボランティア 募集) to Sports Association (スポーツ協会 (1-4-15
Kokutaiji-machi, Naka-ku 7300042) by Wednesday, February 15.

INQUIRIES: *Sports Kyokai* (Sports Association) Tel. 243-0579 Fax. 249-3641

FDMA Band Concert & Fire Drill

消防音楽隊避難訓練コンサート(P6)

WHO: Elementary school students or above

DATE & TIME: Wednesday, February 22, 1:30 pm – 3:00 pm

PLACE: Hiroshima Bunka Gakuen HGB Hall (3-3 Kako-machi, Naka-ku)

CONTENT: Fire and Disaster Management Agency Band will hold a concert and a fire drill.

TO APPLY: Apply by phone, fax or in person to Cultural Exchange Hall (Bunka Koryu Kaikan). The first 500 people will be accepted.

INQUIRIES: Cultural Exchange Hall (Bunka Koryu Kaikan)

Tel. 243-8488 Fax. 243-8498 (3-3 Kako-machi, Naka-ku)

Temporary Closure

臨時休館(P6)

Kurhaus Yunoyama (*Sports Kyokai* Tel. 243-0578 Fax. 249-3641)

CLOSED: Monday, February 6 – Friday, February 10

Hiroshima Peace Culture Foundation News

Event schedules are subject to change. Please contact event organizers to confirm listed information.

February 2017

CIR Question & Answer Day

Are you looking for advice about Hiroshima?

Come in for a chat with our C.I.R., Benjamin Swallow!

DATE & TIME: Wednesday, February 22, 1:00 pm – 3:30 pm

PLACE: International Exchange Lounge

(International Conference Center Hiroshima 1F, 1-5 Nakjima-cho, Naka-ku)

RESERVATIONS ARE REQUIRED: Reservations can be made in person or by telephone at the International Exchange Lounge TEL: 082-247-9715 (Lounge open hours 9:00 am – 6:00 pm)

☺ Check the flyer below for more information [PDF, 112KB, 1 page]:

<http://www.pcf.city.hiroshima.jp/ircd/english/lounge/Advice%20about%20hiroshima%20by%20Benjamin.pdf>

The East Building is Closed until March 2017.

Due to the renovation works, the exhibition rooms of the Peace Memorial Museum East Building are closed until March 2017. Currently, the Main Building is open to visitors. We apologize for any inconvenience that this may cause and ask for your understanding and cooperation in this matter. The location of the entrance remains in the East Building. The summary panels of the closed East Building are displayed in the gallery of the Main Building.

Information on other museum facilities is as follows.

- Coin-Lockers: Available
- Audio Guide: Available for the Main Building.
- Museum Shop: A temporary museum shop is set up on the 1st floor of the East Building.
- Library: Operating under regular hours
- Rest Space / Café: Operating under regular hours

INQUIRIES: Curatorial Division, Hiroshima Peace Memorial Museum Tel. 241-4004

Special Exhibition: "Memoirs of the Atomic Bombing: The Earliest Accounts of the Hiroshima A-bomb Part 2"

PERIOD: Sunday, January 1 – Friday, December 29, 2017

PLACE: Hiroshima National Peace Memorial Hall for the Atomic Bomb Victims, B1

ADMISSION: Free

INQUIRIES: Hiroshima National Peace Memorial Hall for the Atomic Bomb Victims
Tel. 543-6271 Fax. 543-6273

Edited and published by the Hiroshima Peace Culture Foundation
International Affairs Department, International Relations and Cooperation Division
Tel: (082) 242-8879, Fax: (082) 242-7452, E-mail: internat@pcf.city.hiroshima.jp
International Exchange Lounge
Tel: (082) 247-9715, E-mail: golounge@pcf.city.hiroshima.jp
Website: <http://www.pcf.city.hiroshima.jp/ircd/english/index.html>
編集・発行 公益財団法人広島平和文化センター国際部国際交流・協力課

Movie Theaters February 2017



Here is a general list of movies being shown in theaters around Hiroshima. Due to unpredictable changes in scheduling, listings are subject to change without notice. Foreign films are usually in their original language with Japanese subtitles. When not specified, the admission is **¥1,800** for adults. Theaters offer various kinds of admission discount services, so please inquire at each theater for more information.

SALON CINEMA

[Hiroshima Toei Plaza Bldg. 8F, 16-10 Hatchobori, Naka-ku / Tel: 082-962-7772 / URL: <http://www.johakyu.co.jp/>]

From Jan. 21 **Silence** / '17 USA, Italy, Japan, Mexico
 Until Feb. 24 **Suffragette** / '15 UK
 Feb. 11 – 24 **Miles Ahead** / '15 USA

HATCHOZA

[Fukuya Department Store Hatchobori 8F, 6-26 Ebisu-cho, Naka-ku / Tel: 082-546-1158 / URL: <http://www.johakyu.co.jp/>]

Feb. 4 – 24 **Sully** / '16 USA
 From Feb. 10 **Allied** / '16 USA
 From Feb. 24 **La La Land** / '16 USA

YOKOGAWA CINEMA Tel : 231-1001

[3-1-12 Yokogawa-cho, Nishi-ku / Tel: 082-231-1001 / URL: <http://yokogawa-cine.jugem.jp/>]

Feb. 1 – 14 **The Childhood of a Leader** / '15 UK, Hungary, France
 Feb. 8 – 21 **Collective Invention** / '15 Korea
 Feb. 22 – Mar. 7 **Wild** / '16 Germany
 Mar. 1 – 7 **Colonia** / '15 Germany, Luxembourg, France

AEON CINEMA HIROSHIMA

[Hiroshima Danbara Shopping Center 6F, 1-3-52 Danbara-minami, Minami-ku / Tel : 082-261-3770 / URL: <http://www.aeoncinema.com/cinema/hiroshima/>]

From Dec. 16 **Rogue One: A Star Wars Story** / '16 USA
 From Jan. 21 **Silence** / '17 USA, Italy, Japan, Mexico
 From Jan. 21 **The Accountant** / '16 USA
 From Feb. 24 **XXX: The Return of Xander Cage** / '17 USA
 From Feb. 25 **Collateral Beauty** / '16 USA

109 CINEMAS

[Alpark 3F (north bldg.), 4-7-1 Kusatsu-minami, Nishi-ku / Tel: 05700-002-109 / URL: <http://www.109cinemas.net/Hiroshima/>]

From Dec. 16 **Rogue One: A Star Wars Story** / '16 USA
 From Dec. 23 **Resident Evil: The Final Chapter** / '16 USA
 From Jan. 21 **The Accountant** / '16 USA
 From Jan. 21 **Silence** / '17 USA, Italy, Japan, Mexico
 From Jan. 27 **The Magnificent Seven** / '16 USA
 From Jan. 27 **Doctor Strange** / '16 USA
 From Feb. 3 **Miss Peregrine's Home for Peculiar Children** / '16 USA
 From Feb. 11 **Quatsch und die Nasenbarbande / Fiddlesticks** / '14 Germany
 From Feb. 24 **La La Land** / '16 USA
 From Feb. 24 **XXX: The Return of Xander Cage** / '17 USA
 From Feb. 25 **Collateral Beauty** / '16 USA

TOHO CINEMAS MIDORII

[Fuji Grand 3F, 1-5-2 Midorii, Asaminami-ku / Tel : 082-831-8060 / URL: <http://www.tohotheater.jp/>]
 Adults-¥1,800, University students-¥1,500, From preschoolers (3 years old and under) to- High school students-¥1,000,

From Dec. 16 **Rogue One: A Star Wars Story** / '16 USA
 From Dec. 23 **Resident Evil: The Final Chapter** / '16 USA
 From Jan. 21 **Silence** / '17 USA, Italy, Japan, Mexico
 From Jan. 27 **Snowden** / '16 USA
 From Jan. 27 **Doctor Strange** / '16 USA
 From Feb. 3 **Miss Peregrine's Home for Peculiar Children** / '16 USA
 From Feb. 10 **Allied** / '16 USA
 From Feb. 24 **La La Land** / '16 USA
 From Feb. 24 **XXX: The Return of Xander Cage** / '17 USA
 From Mar. 3 **Assassin's Creed** / '16 UK, France, USA, Hong Kong



Please feel free to contact the International Exchange Lounge at 082-247-9715.

E-mail: golounge@pcf.city.hiroshima.jp

February 2017

HIROSHIMA WALD 11

[AEON Mall Hiroshima Fuchu 4F, 2-1-1 Osu, Fuchu-cho,
Aki-gun / Tel : 082-561-0600 /
URL: <http://wald11.com/index.html>]

- From Jan. 7 **Don't Breathe** / '16 USA
 From Jan. 21 **The Accountant** / '16 USA
 From Jan. 21 **Silence** / '17 USA, Italy,
 Japan, Mexico
 From Jan. 27 **Doctor Strange** / '16 USA
 From Jan. 27 **The Magnificent Seven** /
 '16 USA
 From Feb. 3 **Miss Peregrine's Home for
 Peculiar Children** / '16 USA
 From Feb. 4 **Leonardo da Vinci – Il Genio
 a Milano / Leonardo da
 Vinci: The Genius in Milan**
 / '15 Italy
 From Feb. 4 **Chocolat** / '15 France
 From Feb. 10 **Allied** / '16 USA
 From Feb. 18 **The Nice Guys** / '16 USA
 From Feb. 24 **La La Land** / '16 USA
 From Feb. 24 **XXX: The Return of Xander
 Cage** / '17 USA
 From Feb. 25 **Criminal** / '16 UK, USA
 From Feb. 25 **Collateral Beauty** / '16 USA
 From Mar. 3 **We Are X** / '16 USA
 From Mar. 3 **Assassin's Creed** / '16 UK,
 France, USA, Hong Kong

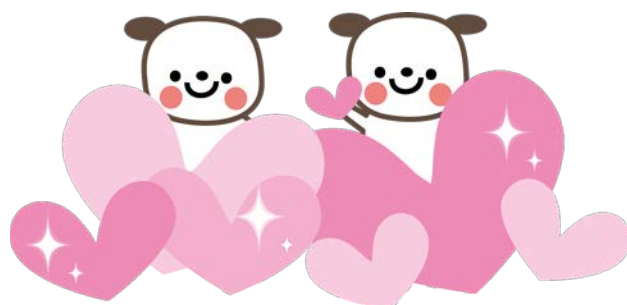
Movie Showings at 10am in the Morning

- Jan. 18 – **To Kill a Mockingbird** /
 Feb. 10 '62 USA
 Feb. 11 – 24 **The Miracle Worker** / '62 USA
 Feb. 25 – **Ukigumo** / '55 Japan
 Mar. 10
 Mar. 11 – 24 **Out of Africa** / '85 USA

T-JOY HIGASHI HIROSHIMA

[Fuji Grand Higashi Hiroshima 3F, 4405 Misonou, Saijo-
cho, Higashi Hiroshima-shi / Tel : 082-493-6779 / URL:
<http://www.t-joy.net/site/hiroshima/index/html>]

- From Dec. 16 **Rogue One: A Star Wars Story**
 / '16 USA
 From Jan. 21 **The Accountant** / '16 USA
 From Jan. 21 **Silence** / '17 USA, Italy,
 Japan, Mexico
 From Jan. 27 **Doctor Strange** / '16 USA
 From Feb. 3 **Miss Peregrine's Home for
 Peculiar Children** / '16 USA
 From Feb. 24 **La La Land** / '16 USA
 From Feb. 24 **XXX: The Return of Xander
 Cage** / '17 USA



Please feel free to contact the International Exchange Lounge at 082-247-9715.

E-mail: golounge@pcf.city.hiroshima.jp

February 2017

Bilingual TV Programs



February 2017

#1: NHK Sogo	#4: Hiroshima TV
#2: NHK E Tele	#5: Home TV
#3: RCC	#8: TSS

◇ Some changes may occur because of special programming.

NEWS

Monday - Sunday

NHK News 7 / 7:00pm – 7:30pm (#1)

Monday - Friday

News Watch 9 / 9:00pm – 10:00pm (#1)

REGULAR PROGRAMS

Thursday

TED / 11:00pm – 11:25pm (#2)

◇ Rerun: Mon., 12:45am – 1:10am

Friday

Japanese Lesson / 1:35pm – 1:50pm (#2)

Through the Wormhole / 10:00pm – 10:45pm (#2) ◇ Except the 24th

Saturday

Dramatic Earth (Documentary Program) /

7:00pm – 7:45pm (#2)

◇ Rerun: Mon., midnight – 12:45am

DRAMAS

Monday

心娶女人 / Marry Me or Not? ('15 Taiwan) /

1:25am – 2:20am (#4) ◇ the 6th: 1:50am – 2:45am

Wednesday

100 Things to Do Before High School ('14 USA) /

7:25pm – 7:50pm (#2)

Saturday

Sam & Cat ('13 USA) / 6:25pm – 6:50pm (#2)

Sunday

Downton Abbey ('14 UK, USA) / 11:00pm –

midnight (#1) ◇ the 5th: 11:00pm – 12:12am

◇ Until the 19th

ANIMATIONS

Friday

Sushi Town / 3:55pm – 4:00pm (#2)

Saturday

Curious George / 8:35am – 9:00am (#2)

The Penguins of Madagascar / 6:00pm –

6:25pm (#2)

Sunday

Thomas & Friends / 5:30pm – 5:50pm (#2)

MOVIES

4th Enter the Dragon / '73 Hong Kong, USA /
12:45am – 2:47am (#3)

4th A Good Day to Die Hard / '13 USA / 9:00pm
– 11:10pm (#8)

5th S.W.A.T. / '03 USA / 1:50am – 3:35am (#8)

5th Night at the Museum / '16 USA / 1:53am –
3:45am (#3)

12th Moulin Rouge! / '01 USA / 1:50am – 3:45am
(#8)

18th The Fifth Element / '97 France, USA / 12:45am
– 3:16am (#3)

19th Trainspotting / '96 UK / 1:53am – 3:45am (#3)

25th El Secreto de sus Ojos / '09 Spain, Argentine
/ 12:45am – 3:18am (#3)

26th One Hour Photo / '02 USA / 1:50am – 3:35am
(#8)

26th You're Next / '11 USA / 1:53am – 3:45am (#3)

SPORTS

Figure Skating

Four Continents Figure Skating

Championships (#8) ◇ Broadcasted in Japanese only

16th 8:00pm – 9:54pm

17th 7:57pm – 10:09pm

18th 9:00pm – 11:10pm

19th 7:00pm – 8:54pm

Athletics

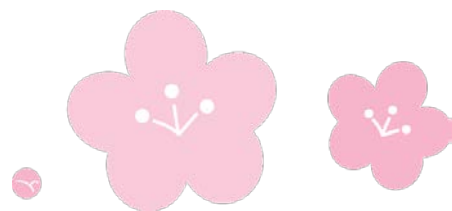
Tokyo Marathon 2017 (#4)

◇ Broadcasted in Japanese only

26th 9:00am – 11:50am

Baseball

28th Japan x Taiwan / 7:00pm – 9:48pm
(#5) ◇ Broadcasted in Japanese only



Please feel free to contact to the International Exchange Lounge at 082-247-9715.

E-Mail: golounge@pcf.city.hiroshima.jp

February 2017

Concerts & Plays



Ticket Offices

- ① EDION Play Guide (*Honkan*, B1F) (Kamiya-cho, Naka-ku; Tel. 247-5111)
- ② YAMAHA Music (Kamiya-cho, Naka-ku; Tel. 244-3779 Closed on the 1st & the 3rd Wednesdays)
- ③ Hiroshima Yume Plaza (Hondori, Naka-ku; Tel. 544-1122 Closed on Wednesdays)
- ④ Kawai Music Shop (Horikawa-cho, Naka-ku; Tel. 243-9291 Closed on Tuesdays)
- ⑤ Fukuya Department Store, Hatchobori (7F) (Ebisu-cho, Naka-ku; Tel. 246-6111)
- ⑥ Fukuya Department Store, Hiroshima Station (7F) (Matsubara-cho, Minami-ku; Tel. 568-3111)
- ⑦ Alpark Tenmaya (3F) (Inokuchi-myojin, Nishi-ku; Tel. 501-1111)
- ⑧ Hiroshima Arts Gakki (Hatchobori, Naka-ku; Tel. 227-6601)

Date / Starting Time (Opening Time) / Venue / Ticket Price / Tickets Go on Sale Date / Ticket Offices / Inquiries

♪ **Event schedules are subject to change.**

Please contact the event office before you go. ♪

February

★ An Evening of Classical Music

3rd Fri. / 6:30pm (6:00pm) / Higashi Kumin Bunka Center / Free admission / 090-7996-0588 (Hikita)
♪ Oboe, trombone, euphonium & piano concert

★ Jeff Beck Japan Tour

4th Sat. / 6:30pm (5:30pm) / Ueno Gakuen Hall / S-¥12,000 A-¥11,000 / Now on sale / ㊦, Lawson, e+, Ticket PIA / Yumebanchi Hiroshima 082-249-3571 (Mon. – Fri., 11:00am – 7:00pm), UDO Music Office 03-3402-3999

★ Winter Concert 2017: HOTrio

4th Sat. / 6:45pm (6:15pm) / Aki Kumin Bunka Center / Advance: Adults-¥2,000 High school students and under-¥1,000; At the door: Adults-¥2,500 High school students and under-¥1,500 / JMS Aster Plaza, Kumin Bunka Centers / Aki Kumin Bunka Center 082-824-1330 (closed on Mondays)

★ coba tour 2017

10th Fri. / 7:00pm (6:00pm) / Hiroshima Club Quattro / ¥6,000 (drinks are extra.) / Now on sale / ㊦, Lawson, Ticket PIA, Seven-Eleven, e+ / TSS 082-253-1010
♪ coba is an accordion player.

★ Sakurako Waseda Violin Concert

11th Sat. / 2:30pm (2:00pm) / Hatsukaichi Bunka Hall Sakurapia / Adults-¥1,000 High school students and under-¥500 (all non-reserved seats) / Now on sale / Sakurapia / Hatsukaichi Bunka Hall Sakurapia 0829-20-0111

★ Les Freres with Orchestra Ensemble Kanazawa Symphonic Tour 2017

12th Sun. / 2:00pm (1:30pm) / Hatsukaichi Bunka Hall Sakurapia / Adults-¥5,000 25 years old and under-¥2,500 (U-25 tickets are only sold at Sakurapia.) / Now on sale / ㊦, Ticket PIA, Lawson, Sakurapia / Hatsukaichi Bunka Hall Sakurapia 0829-20-0111

★ Winterreise: Franz Schubert

14th Tue. / 7:15pm (6:30pm) / Higashi Kumin Bunka Center / Advance-¥5,000 At the door-¥5,500 Students (25 years old & under)-¥2,500 (all non-reserved seats) ✧ U-25 tickets are only sold at Higashi Kumin Bunka Center / Now on sale / ㊦, Higashi Kumin Bunka Center / 090-7505-1382 E-mail: chikako.hino@gmail.com (Hino)

NEW!!

★ "Ototabī" Concert

16th Thurs. / 6:30pm (6:00pm) / Nishi Kumin Bunka Center / Free admission / 080-4557-3763 (Tsushima)
♪ Classical music concert

NEW!!



Please feel free to contact the International Exchange Lounge at 082-247-9715.

E-mail: golounge@pcf.city.hiroshima.jp

February 2017

★ **Hiroshima Symphony Orchestra:
Masterpiece Concert ~ Winter ~**

(*Dvořák: Carnival Overture Op. 92; Mendelssohn: Violin Concerto in E minor Op. 64; Dvořák: Symphony No. 9 in E minor Op. 95 "From the New World"*)

19th Sun. / 3:00pm (2:00pm) / Hiroshima Kokusai Kaigijo (International Conference Center Hiroshima), Phoenix Hall / S-¥4,200 Pair tickets (S seats)-¥6,400 A-¥3,200 B-¥2,200 Students-¥1,500 (Students tickets are only sold at the Hiroshima Symphony Orchestra Office.) / Now on sale / ①⑤⑥⑦, JMS Aster Plaza, Chugoku Shimbun, Hiroshima Symphony Orchestra Office / Hiroshima Symphony Orchestra 082-532-3080 E-mail: info@hirokyo.or.jp
♪ Conductor: Kazuyoshi Akiyama / Violin: Teiko Machashi

★ **Hironori Ogawa Marimba Concert**

23rd Thurs. / ① 2:00pm (1:30pm) ② 7:00pm (6:30pm) / Nishi Kumin Bunka Center / Advance-¥1,500 At the door-¥2,000 (all tickets are for non-reserved seats.) / Now on sale / JMS Aster Plaza, Kumin Bunka Centers / Nishi Kumin Bunka Center 082-234-1960 (9:00am – 9:00pm, closed on Mondays)
♪ Marimba: Eiko Ikegami, Sara Tatsuyama

★ **Hiroshima Symphonic Band:
The 82nd Regular Concert**

NEW!!

26th Sun. / 2:00pm (1:00pm) / Ueno Gakuen Hall / Advance-¥500 At the door-¥600 / Now on sale / ①⑧ / Hiroshima Symphonic Band 090-6832-1965 E-mail: hiroshimasymphonicband@ac.auone-net.jp

★ **Hiroshima Symphony Orchestra:
The 367th Subscription Concert**

(*Mendelssohn: Overture "Die Schöne Melusine" Op. 32; Liszt: Piano Concerto No. 1 in E-flat major S. 124/R. 455; Schumann: Symphony No. 1 in B-flat major Op. 38 "Spring"*)

26th Sun. / 3:00pm (2:00pm) / Hiroshima Bunka Gakuen HBG Hall / S-¥5,200 A-¥4,700 B-¥4,200 Students-¥1,500 (Student tickets are only sold at the Hiroshima Symphony Orchestra Office.) / Now on sale / ①⑤⑥⑦, Ticket PIA, Lawson (convenience store), Chugoku Shimbun & Hiroshima Symphony Orchestra Office / Hiroshima Symphony Orchestra Office 082-532-3080 E-mail: info@hirokyo.or.jp
♪ Conductor: Clemens Schuldt / Piano: Kemal Gekic

★ **Trip! ~ the 7th Concert ~**

NEW!!

27th Mon. / 6:00pm (5:30pm) / Elisabeth University of Music, Xavier Hall / ¥800 ♡ Free admission for elementary school students and under / Please ask the concert organizer for ticket information. / 090-1351-1070 (Shimizu)
♪ "Trip!" is a percussion ensemble group.

March

★ **Family Musical**

Thomas & Friends: Treasures on the Island of Sodor

4th Sat. / ① Noon (11:30am) ② 2:30pm (2:00pm) / Hiroshima Bunka Gakuen HBG Hall / ¥2,800 / Now on sale / Laswon, Ticket PIA, e+, Seven-Eleven, ①⑥ / TSS Office 082-253-1010 (Mon. – Fri., 10:00am – 6:00pm)

★ **Bunraku (traditional Japanese puppet play)**

4th Sat. / ① 1:30pm (1:00pm) ② 6:00pm (5:30pm) / JMS Aster Plaza / Stalls-¥4,500 Balcony seats-¥2,500 / Now on sale / ①⑥, JMS Aster Plaza, Chugoku Shimbun / JMS Aster Plaza 082-244-8000

★ **Ayako Ishikawa Violin Concert 2017 in Hiroshima**

4th Sat. / 2:00pm (1:30pm) / Hiroshima Kokusai Kaigijo (International Conference Center Hiroshima), Phoenix Hall / ¥5,000 / Now on sale / ①⑥⑦ / Hiroshima HOME TV 082-221-7116 (Mon. – Fri., 10:00am – 5:00pm); Samon Promotion 06-6225-2237 (Mon. – Fri., 10:00am – 6:00pm)

★ **L'esprit Français**

NEW!!

4th Sat. / 3:00pm (2:30pm) / Hiroshima Kenmin Bunka Center / Advance: Adults-¥2,500 Students-¥1,500; At the door: Adults-¥3,000 Students-¥2,000 / Now on sale / ①, Kenmin Bunka Center / Le Jardin de CORTOT 080-4268-0046 (Oshiro)

★ **Rika Masato Violin Concert**

NEW!!

4th Sat. / 3:30pm (2:45pm) / Nishi Kumin Bunka Center / Advance: Adults-¥3,000 Children & Seniors-¥2,000; At the door: Adults-¥3,500 Children & Seniors-¥2,500 / Now on sale / ①⑥, Kumin Bunka Centers, JMS Aster Plaza / Nishi Kumin Bunka Center 082-234-1960 (closed on Mondays)

NEW!!

★ **Hitomi Yoshida Pipe Organ Concert 2017**

5th Sun. / 2:00pm (1:30pm) / Elisabeth University of Music, Cecilia Hall / Advance: Adults-¥2,500 Students-¥1,500; At the door: Adults-¥3,000 Students-¥2,000 / Now on sale / ①④⑦ / 090-2291-3561 (Yoshida), 090-1332-1022 (Kakuta)
♪ Guitar: Toshimitsu Kamigaiichi



Please feel free to contact the International Exchange Lounge at 082-247-9715.

E-mail: golounge@pcf.city.hiroshima.jp

February 2017

★ **Machiko Tomotani Piano Recital**

NEW!!

5th Sun. / 3:00pm (2:30pm) / Gewand Halle /
Advance: Adults-¥3,000 Students-¥2,000; At the
door: Adults-¥3,500 Students-¥2,500 / Now on
sale / ①④⑦, Hatsukaichi Bunka Hall Sakurapia /
Hiroshima Music Project 0829-38-2264

★ **Hiroshima Symphony Orchestra Discovery Series: "Gift"**

(Hidemaro Konoye (arr.): *Etenraku*; Hiroshi Ohguri:
*Legend for Orchestra (After the Tele of Ama-no-
Iwayado*; Messiaen: *Sept Haïkaï - Esquisses Japonaises
pour Piano et Orchestre -*; Mozart: *Symphony No. 41 in
C major K. 551 "Jupiter"*)

9th Thurs. / 6:45pm (5:45pm) / JMS Aster Plaza / S-
¥5,200 A-¥4,200 B-¥3,200 Students-¥1,000
(Student tickets are only sold at the Hiroshima
Symphony Orchestra Office.) / Now on sale /
①⑤⑥⑦, Ticket PIA, Lawson (convenience store),
Chugoku Shimbun, Hiroshima Symphony Orchestra
Office, JMS Aster Plaza / Hiroshima Symphony
Orchestra Office 082-532-3080 E-mail:

info@hirokyo.or.jp

♪ Conductor: Kazuyoshi Akiyama
Piano: Hiroshi Nagao

NEW!!

★ **Taiko Hiroshima: Kaburaya Live 2017**

12th Sun. / 4:00pm (3:30pm) / Asaminami Kumin
Bunka Center / Advance: Reserved seats-¥4,000
Adults-¥3,000 Elementary school students and
under-¥2,000; At the door: Reserved seat-¥4,500
Adults-¥3,500 Elementary school students and
under-2,500 / Now on sale / ①, Asaminami Kumin
Bunka Center / Executive Committee 082-509-
0320

♪ This is a *taiko*, traditional Japanese drum performance.

★ **Hiroshima Symphony Orchestra:
The 368th Subscription Concert**

(Mozart: *Divertimento in D major K. 136*; Mozart:
Clarinet Concerto in A major K. 622; R. Strauss: *Ein
Heldenleben Op. 40*)

18th Sat. / 3:00pm (2:00pm) / Hiroshima Bunka
Gakuen HBG Hall / S-¥5,200 A-¥4,700 B-
¥4,200 Students-¥1,500 (Student tickets are only
sold at the Hiroshima Symphony Orchestra Office.) /
Now on sale / ①⑤⑥⑦, Ticket PIA, Lawson
(convenience store), Chugoku Shimbun &
Hiroshima Symphony Orchestra Office /
Hiroshima Symphony Orchestra Office 082-532-
3080 E-mail: info@hirokyo.or.jp

♪ Conductor: Kazuyoshi Akiyama
Clarinet: Daniel Ottensamer

★ **Hiroshima City Opera:****La Bohème (by G. Puccini)**

① 18th Sat. ② 19th Sun. / ① 5:00pm (4:00pm)
② 2:00pm (1:00pm) / JMS Aster Plaza / SS-¥7,000
S-¥6,000 Non-reserved seats-¥5,000 Students-
¥3,500 ✧ Student tickets are only sold on the
performance dates. / Now on sale / ①, JMS Aster
Plaza / Hiroshima City Opera 090-7897-0888
♪ This will be played in Italian with Japanese subtitles.

★ **The 5th Kammermusik Akademie in
Kure: Special Concert**

NEW!!

28th Tue. / 6:30pm (6:00pm) / Kure City Bunka Hall
/ Adults-¥2,500 Students-¥1,000 / Now on sale /
①④ / 090-1355-2557 (Shimoda), 090-1251-7635
(Asada)

April★ **LOUDNESS Japan Tour 2017:
"Lightning Strikes" 30th Anniversary 8117**

NEW!!

2nd Sun. / 6:00pm (5:00pm) / Hiroshima Club
Quattro / ¥7,500 / From Sat., February 25 / ①, e+,
Ticket PIA, Lawson, Tower Records Hiroshima /
Hiroshima Club Quattro 082-542-2280

★ **BO.LE.RO**

NEW!!

6th Thurs. / 7:00pm (6:30pm) / JMS Aster Plaza /
¥5,000 / Now on sale / ①, Lawson, Ticket PIA, e+,
JMS Aster Plaza / TSS Office 082-253-1010 (Mon.
– Fri., 10am – 6pm)

♪ This is a contemporary dance performance by four
dancers.

★ **Hiroshima Symphony Orchestra:
The 369th Subscription Concert**

NEW!!

(Bruckner: *Symphony No. 8 in C minor (Haas Ed.)*)

16th Sun. / 3:00pm (2:00pm) / Hiroshima Bunka
Gakuen HBG Hall / S-¥5,200 A-¥4,700 B-
¥4,200 Students-¥1,500 (Student tickets are only
sold at the Hiroshima Symphony Orchestra Office.) /
From Thurs., February 16 / ①②⑤⑥⑦⑧, Lawson,
Ticket PIA, Chugoku Shimbun & Hiroshima
Symphony Orchestra Office / Hiroshima
Symphony Orchestra Office 082-532-3080 E-
mail: info@hirokyo.or.jp

♪ Conductor: Tatsuya Shimono

★ **Norah Jones**

19th Wed. / 6:30pm (6:00pm) / Hiroshima Bunka
Gakuen HBG **SOLD OUT** A-¥8,500 / Now
on sale / Lawson, e+, Ticket PIA, ① / Yumebanchi
Hiroshima 082-249-3571



Please feel free to contact the International Exchange Lounge at 082-247-9715.

E-mail: golounge@pcf.city.hiroshima.jp

February 2017

★ **Mariko Senju Violin Recital**

NEW!!

22nd Sat. / 2:00pm (1:15pm) / Ueno Gakuen Hall / S-¥6,000 A-¥5,500 / Now on sale / ①⑥⑦,
Lawson, Ticket PIA / HOME Event Center 082-221-7116

♪ Special guest: Akira Senju

★ **Anderson, Rabin & Wakeman Japan Tour 2017**

22nd Sat. / 5:00pm (4:00pm) / Hiroshima Club Quattro / ¥11,000 / Now on sale / ①, e+, Ticket PIA, Lawson, Tower Records Hiroshima / Hiroshima Club Quattro 082-542-2280

★ **Hiroshima Symphony Orchestra: The 20th Regular Concert in Hatsukaichi**

NEW!!

(*Tchaikovsky: Serenade in C major, Op. 48; Puccini: Gianni Schicchi, "O mio babbino caro"; Puccini: Madama Butterfly, "Un bel di, vedremo" "Tu, tu, piccolo iddio"; Tchaikovsky: Romeo and Juliet Fantasy Overture*)

23rd Sun. / 3:00pm (2:30pm) / Hatsukaichi Bunka Hall Sakurapia / S-¥5,000 A-¥4,000 B-¥3,000 Students-¥1,500 (B seats only) / From Sun., February 12 / ①, Ticket PIA, Lawson, Sakurapia / Hatsukaichi Bunka Hall Sakurapia 0829-20-0111

♪ Conductor: Shigeo Genda / Soprano: Shinobu Sato

★ **Monkey Majik Japan Tour 2017**

NEW!!

10th Wed. / 7:00pm (6:15pm) / Hiroshima Club Quattro / ¥4,800 / From Sat., February 25 / e+, Ticket PIA, Lawson / Yumebanchi Hiroshima 082-249-3571

★ **Hiroshima Symphony Orchestra: Bouquet of Music HSO Masterpiece Concert ~ Spring ~**

NEW!!

(*Borodin: Prince Igor, Polovtsian Dances; Tchaikovsky: Piano Concerto No. 1 in B-flat minor Op. 23; Mussorgsky (arr. Ravel): Pictures at an Exhibition*)

14th Sun. / 3:00pm (2:00pm) / Hiroshima Kokusai Kaigijo (International Conference Center Hiroshima), Phoenix Hall / S-¥4,200 Pair tickets (S seats)-¥6,400 A-¥3,200 B- ¥2,200 Students-¥1,500 (Student tickets are only sold at the Hiroshima Symphony Orchestra Office.) / From Mon., February 20 / ①②⑤⑥⑦⑧, Lawson, Ticket PIA, Chugoku Shimbun & Hiroshima Symphony Orchestra Office / Hiroshima Symphony Orchestra Office 082-532-3080 E-mail: info@hirokyo.or.jp

♪ Navigator: Shogo Kariyazaki / Conductor: Pascal Verrot / Piano: Yuya Tsuda

★ **Hats Music Festival Vol. 2: Violin Concert by Taro Hakase, Chisako Takashima & Iwao Furusawa**

14th Sun. / 5:00pm (4:30pm) / Hiroshima Bunka Gakuen HBG Hall / ¥8,500 / From Sat., February 11 / Lawson, Ticket PIA, e+, ①⑥ / Candy Promotion Hiroshima 082-249-8334

★ **ONE OK ROCK 2017 "Ambitions" Japan Tour**

NEW!!

16th Tue. & 17th Wed. / 7:00pm (6:00pm) / Hiroshima Green Arena / Arena standing-¥7,020 Standing seats-¥7,020 / From Sat., March 18 / Lawson, Ticket PIA, / Candy Promotion Hiroshima 082-249-8334

★ **Hiroshima Symphony Orchestra: The 370th Subscription Concert**

NEW!!

(*Berlioz: Roman Carnival, Overture Op. 9; Tomasi: Trombone Concerto; Tchaikovsky: Symphony No. 6 in B minor Op. 74 "Pathétique"*)

26th Fri. / 6:45pm (5:45pm) / Hiroshima Bunka Gakuen HBG Hall / S-¥5,200 A-¥4,700 B-¥4,200 Students-¥1,500 (Student tickets are only sold at the Hiroshima Symphony Orchestra Office.) / From Sun., March 26 (From Mon., March 27 at the Hiroshima Symphony Orchestra Office) / ①②⑤⑥⑦⑧, Lawson, Ticket PIA, Chugoku Shimbun & Hiroshima Symphony Orchestra Office / Hiroshima Symphony Orchestra Office 082-532-3080 E-mail: info@hirokyo.or.jp

♪ Conductor: Jean-Claude Casadesus
Trombone: Fabrice Millischer

May

NEW!!

★ **Disney Live!: Mickey's Forever Magic! ~ Final Japan Tour ~**

① 2nd Tue. ② 3rd Wed. / ① the 2nd: 6:30pm (5:45pm); ② the 3rd: ① 10:30am (9:45am) ② 1:30pm (12:45pm) ③ 4:30pm (3:45pm) / Hiroshima Bunka Gakuen HBG Hall / Tickets for the concert on the 2nd: S-¥4,700 A-¥3,300; Tickets for the concerts on the 3rd: S-¥5,200 A-¥3,800 ✧ Group ticket (a set of four tickets is available only for 6:30pm performance on the 2nd & 4:30pm performance on the 3rd):

S-¥18,000 A-¥12,000 / Now on sale / ①, Lawson, Ticket PIA, Seven Tickets, e+, Rakuten Ticket, e-get (for group tickets) / Disney Live! Hiroshima Office 082-541-5599 (Mon. – Fri., 10am – 6pm)

♪ If you come to the 4:30pm concert on the 3rd wearing a Disney costume, you will get a present.

★ **Kotaro Oshio: The 15th Anniversary Tour "KTR x GTR"**

4th Thurs. / 5:00pm (4:30pm) / Hiroshima Club Quattro / ¥5,500 (all non-reserved seats) / Now on sale / e+, Ticket PIA, Lawson / Yumebanchi Hiroshima 082-249-3571

♪ This is an acoustic guitar concert.

Please feel free to contact the International Exchange Lounge at 082-247-9715.

E-mail: golounge@pcf.city.hiroshima.jp

February 2017

NEW!!

JUNE★ **The Bolshoi Theatre: Swan Lake**

NEW!!

2nd Fri. / 6:30pm (5:45pm) / Hiroshima Bunka Gakuen HBG Hall / SS-¥23,000 S-¥21,500 A-¥19,000 B-¥17,000 C-¥16,000 Pair tickets-¥44,000 ↪ B, C and pair ticket are only sold at e+ / From Sat., March 4 / ①, e+ / Hiroshima TV Event Information Center 082-249-1218 (Mon. – Fri., 10am – 6pm)

★ **Hiroshima Symphony Orchestra: Discovery Series I**

NEW!!

(*Suppe: Ein Morgen, ein Mittag und ein Abend in Wien, Overture; Schoenberg: Chamber Symphony No. 1 Op. 9; Schubert: Symphony No. 1 in D major D82*)

2nd Fri. / 6:45pm (5:45pm) / JMS Aster Plaza / S-¥5,200 A-¥4,200 B- ¥3,200 Students-¥1,000 (Student tickets are only sold at the Hiroshima Symphony Orchestra Office.) / From Sun., April 2 (From Mon., April 3 at the Hiroshima Symphony Orchestra Office) / ①②⑤⑥⑦⑧, Lawson, Ticket PIA, Chugoku Shimbun, JMS Aster Plaza & Hiroshima Symphony Orchestra Office / Hiroshima Symphony Orchestra Office 082-532-3080 E-mail: info@hirokyo.or.jp
 ♪ Conductor: Tatsuya Shimono

★ **Hiroshima Symphony Orchestra: The 371st Subscription Concert**

NEW!!

(*Mozart: Bassoon Concerto in B-flat major K. 191; Brahms: Variations on a Theme of Haydn Op. 56a; Dvořák: Symphony No. 7 in D minor Op. 70*)

9th Fri. / 6:45pm (5:45pm) / Hiroshima Bunka Gakuen HBG Hall / S-¥5,200 A-¥4,700 B-¥4,200 Students-¥1,500 (Student tickets are only sold at the Hiroshima Symphony Orchestra Office.) / From Sun., April 9 (From Mon., April 10 at the Hiroshima Symphony Orchestra Office) / ①②⑤⑥⑦⑧, Lawson, Ticket PIA, Chugoku Shimbun & Hiroshima Symphony Orchestra Office / Hiroshima Symphony Orchestra Office 082-532-3080 E-mail: info@hirokyo.or.jp
 ♪ Conductor: Robert Trevino
 Bassoon: Sophie Dartigalongue

★ **Yasuko Otani Violin Concert**

NEW!!

9th Fri. / 6:45pm (6:00pm) / Nishi Kumin Bunka Center / Advance: Adults-¥4,000 Children & Seniors-¥3,000; At the door: Adults-¥4,500 Children & Seniors-¥3,500 / From the beginning of April / Kumin Bunka Centers, JMS Aster Plaza, Ticket offices in Hiroshima City / Nishi Kumin Bunka Center 082-234-1960 (closed on Mondays)
 ♪ Piano: Mami Hagiwara

★ **Nobuyuki Tsujii (piano) & Mone Hattori (violin) Concerto Concert**

10th Sat. / 2:00pm (1:15pm) / Hiroshima Bunka Gakuen HBG Hall / S-¥9,500 A-¥7,500 B-¥6,000 / From Sun., February 12 / ①⑥⑦, Lawson, Ticket PIA / HOME Event Center 082-221-7116

JULY★ **Hiroshima Symphony Orchestra: The 372nd Subscription Concert**

NEW!!

(*Toshiro Mayuzumi: Mandala Symphony; Pauer: Horn Concerto; Schumann: Symphony No. 2 in C major Op. 61*)

7th Fri. / 6:45pm (5:45pm) / Hiroshima Bunka Gakuen HBG Hall / S-¥5,200 A-¥4,700 B-¥4,200 Students-¥1,500 (Student tickets are only sold at the Hiroshima Symphony Orchestra Office.) / From Sun., May 7 (From Mon., May 8 at the Hiroshima Symphony Orchestra Office) / ①②⑤⑥⑦⑧, Lawson, Ticket PIA, Chugoku Shimbun & Hiroshima Symphony Orchestra Office / Hiroshima Symphony Orchestra Office 082-532-3080 E-mail: info@hirokyo.or.jp
 ♪ Conductor: Tatsuya Shimono
 Horn: Radek Baborák

★ **Tokyo Ska Paradise Orchestra: 2017 Tour "TOKYO SKA Has No Border"**

NEW!!

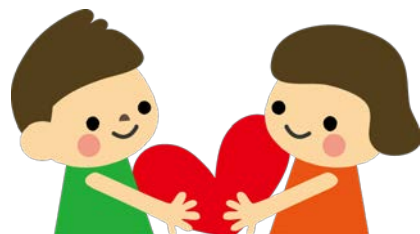
15th Sat. / 6:00pm (5:00pm) / Ueno Gakuen Hall / ¥6,200 / From Sat., March 18 / Lawson, Ticket PIA, e+, ① / Candy Promotion Hiroshima 082-249-8334

★ **Hiroshima Symphony Orchestra: The 27th Regular Concert in Kure**

NEW!!

(*Dvořák: Romance in F minor Op. 11 (B. 39); Martinů: Concerto for 2 Violins & Orchestra; Dvořák: Symphony No. 9 in E minor Op. 95 "From the New World"*)

30th Sun. / 2:30pm (2:00pm) / Kure City Bunka Hall / S-¥3,700 A-¥3,200 B- ¥2,700 Students-¥1,000 (Student tickets are only sold at the Hiroshima Symphony Orchestra Office.) / Please ask Kure City Bunka Hall for ticket information. / Kure City Bunka Hall 0823-25-7878
 ♪ Conductor: Masato Suzuki
 Violin: Yosuke Kawasaki, Jessica Linnebach



Please feel free to contact the International Exchange Lounge at 082-247-9715.

E-mail: golounge@pcf.city.hiroshima.jp

February 2017



A: Adults U: University Students H: High School Students
 J: Junior High School Students E: Elementary School Students
 S: Seniors (65 years old and up - Identification showing your date of birth is required.)

◆ Generally, admission is allowed up to 30 min. prior to closing. ◆

Hiroshima Museum of Art

Address: 3-2 Moto-machi, Naka-ku, Hiroshima City
 Tel: 082-223-2530
 Hours: 9:00am – 5:00pm
 Closed: Mondays (except during special exhibitions)
 URL: <http://www.hiroshima-museum.jp>

Special Exhibition

■ **Chef-d'œuvre du Musée des Beaux-Arts de REIMS**

Period: Sat., Feb. 11 – Sun., Mar. 26
 Admission Fee:

A -¥1,300 (¥1,100), S-¥1,100,
 U&H-¥1,000 (¥800), J&E-¥600 (¥400)
 ◇ Advance ticket prices shown in ().

■ **Peter Rabbit**

Period: Sat., Apr. 15 – Sun., Jun. 4
 Admission Fee:

A -¥1,300 (¥1,100), S-¥1,100,
 U&H-¥1,000 (¥800), J&E-¥600 (¥400)
 Pair tickets-¥2,200 (¥2,000)
 ◇ Advance ticket prices shown in ().

Collection Exhibition

■ **Modern European Paintings**

Period: Year-round

Hiroshima City Museum of Contemporary Art

Address: 1-1 Hijiyama Koen, Minami-ku, Hiroshima City
 Tel: 082-264-1121
 Hours: 10:00am – 5:00pm
 Closed: Mondays (except national holiday)
 URL: <http://www.hcmca.cf.city.hiroshima.jp/>

★ **Museum will be closed from Jan. 23 to Mar. 17.**

Open Program (Free Admission)

■ **Open Call for Design Ideas of "Hiroshima Brand" 2016**

Period: Sat., Mar. 18 – Fri., Mar. 31

Hiroshima MOCA Monthly Workshop

✂ **This is an art program in which the museum selects one particular material and visitors are free to make anything with it. Reservations are not required. You can join the workshop on the event day of.**

Date: Mar. 26 (Sun.)

Time: ① 10:00am – noon

② 2:00pm – 4:00pm

Participation Fee: Free

Hiroshima Prefectural Art Museum

Address: 2-22 Kaminobori-cho, Naka-ku, Hiroshima City
 Tel: 082-221-6246
 Hours: 9:00am – 5:00pm
 ◇ Open until 8:00pm on Fridays (Apr. – Oct.)
 ◇ Open until 7:00pm on Fridays (Nov. – Mar.)
 Closed: Feb. 13 & 20
 URL: <http://www.hpam.jp/>

Special Exhibitions

■ **Nanzan Shimizu: The Master of Modern Metalwork from Hiroshima**

Period: Fri., Jan. 6 – Sun., Feb. 12

Admission Fee:

A-¥1,100 (¥900), U&H-¥700 (¥500),
 J&E-¥400 (¥200)

◇ Advance ticket prices shown in ()

■ **The 63rd Japan Traditional Kōgei – Art Crafts – Exhibition**

Period: Thurs., Feb. 23 – Sun., Mar. 12

Admission Fee:

A-¥700 (¥500), U&H-¥400 (¥200),
 J&E-¥400 (¥200)

◇ Advance ticket prices shown in ()

Collection Exhibition

Admission Fee (all exhibitions):

A-¥510, U-¥310, H, & under-Free

Holders of special exhibition admission tickets are also entitled to view the Museum's Collection exhibits.

Please feel free to contact the International Exchange Lounge at 082-247-9715.

E-mail: golounge@pcf.city.hiroshima.jp

February 2017

■ **Hiroshima Prefectural Art Museum Best Selection Exhibit: Part 2**
Simultaneous Exhibit: Works Acquired in 2015

Period: Until Sun., Apr. 16

Kure Municipal Museum of Art

Address: Irifuneyama Koen, Saiwai-cho, Kure City

Tel: 0823-25-2007

Hours: 10:00am – 5:00pm

Closed: Tuesdays (except national holidays)

URL: <http://kure-bi.jp/>

Special Exhibition

■ **Alfons Mucha**

Period: Until Sun., Feb. 12

Admission Fee: A-¥1,000 (¥800), U&H-¥600 (¥500), H&E-¥400 (¥300)

◇ Advance ticket prices shown in ()

Collection Exhibition

Admission Fee (all exhibitions):

A&U-¥300, H-¥180, J&E-¥120

■ **Japanese Abstractions after the War**

Period: Wed., Feb. 22 – Sun., Mar. 26

Fukuyama Museum of Art

Address: 2-4-3 Nishi-machi, Fukuyama City

Tel: 084-932-2345

Hours: 9:30am – 5:00pm

Closed: Mondays, New year holidays

HP: <http://www.city.fukuyama.hiroshima.jp/site/fukuyama-museum/>

Special Exhibition

■ **Hoki Museum Exhibition**

Period: Sat., Jan. 21 – Sun., Mar. 12

Admission Fee: A&U-¥300, H & under-Free

Collection Exhibition

Admission Fee (all exhibitions):

A&U-¥300, H & under-Free

■ **Winter Exhibition**

Yasumasa Morimura

Period: Until Sun., Apr. 2

Okuda Genso Sayume Art Museum

Address: 453-6 Higashi Sakeya-machi, Miyoshi City

Tel: 0824-65-0010

Hours: 9:30am – 5:00pm

Open until 9:00pm on Mar. 12

Closed: Feb. 8 & 9

URL: <http://www.genso-sayume.jp>

Special Exhibition

■ **Kiyoshi Yamashita**

Period: Wed., Mar. 1 – Sun., Apr. 16

Admission Fee: Not finalized



Please feel free to contact the International Exchange Lounge at 082-247-9715.

E-mail: golounge@pcf.city.hiroshima.jp

February 2017



Event Halls

◆ Hiroshima Bunka Gakuen HBG Hall 広島文化学園 HBG ホール

(3-3 Kako-machi, Naka-ku, Hiroshima Tel. 082-243-8881)

- ▶ Take the No.24 bus bound for Yoshijima Eigyosho (吉島営業所) and get off at Kako-machi (加古町). Walking time to destination: 2 minutes

◆ Hiroshima Kenmin Bunka Center 広島県民文化センター

(1-5-3 Ote-machi, Naka-ku, Hiroshima Tel. 082-245-2311)

- ▶ Take a streetcar or a bus and get off at Hondori (本通) or Kamiya-cho (紙屋町). Walking time to destination: 5 minutes

◆ JMS Aster Plaza JMS アステールプラザ

(4-17 Kako-machi, Naka-ku, Hiroshima Tel. 082-244-8000)

- ▶ Take the No.24 bus bound for Yoshijima Eigyosho (吉島営業所) and get off at Kako-machi (加古町). Walking time to destination: 2 minutes

◆ Ueno Gakuen Hall 上野学園ホール

(19-1 Hakushima-kita-machi, Naka-ku, Hiroshima Tel. 082-223-6367)

- ▶ Take the Astramline bound for Koiki Koen-mae (広域公園前) or Chorakuji (長楽寺) Station and get off at Hakushima (白島) Station. Walking time to destination: 3 minutes

◆ Hiroshima Kokusai Kaigi-jo (International Conference Center Hiroshima), Phoenix Hall

広島国際会議場フェニックスホール

(1-5 Nakajima-cho, Naka-ku, Hiroshima Tel. 082-242-7777)

- ▶ Get on a Hiroshima Bus bound for Yoshijima and get off at Heiwa Kinenkoen (平和記念公園).
- ▶ Get off at the Chuden-mae (中電前) or Genbaku Dome-mae (原爆ドーム前) Streetcar Stops. Walking time to destination: 5 minutes

◆ Hiroshima Club Quattro 広島クラブクアトロ

(10-1 Hondori, Naka-ku, Hiroshima (Hiroshima PARCO Hon-kan 10F) Tel. 082-542-2280)

- ▶ Take a streetcar and get off at Hatchobori (八丁堀). Walking time to destination: 5 minutes

◆ Hiroshima Green Arena 広島グリーンアリーナ

(4-1 Moto-machi, Naka-ku, Hiroshima Tel. 082-228-1111)

- ▶ Take a streetcar and get off at Kamiya-cho-nishi (紙屋町西) or Kamiya-cho-higashi (紙屋町東). Walking time to destination: 5 minutes

◆ Hiroshima Sun Plaza 広島サンプラザ

(3-1-1 Shoko Center, Nishi-ku, Hiroshima Tel. 082-278-5000)

- ▶ Take a train or streetcar to Miyajima and get off at JR Shin-inokuchi (新井口) Station (JR Sanyo Line) or Shoko Center-iriguchi (商エセンター入り口) Streetcar Stops (Hiroden Miyajima Line). Walking time to destination: 5 minutes

◆ Elisabeth University of Music エリザベト音楽大学

(4-15 Nobori-machi, Naka-ku, Hiroshima Tel. 082-221-0918)

- ▶ Take a streetcar and get off at Kanayama-cho (銀山町) or Jogakuin-mae (女学院前). Walking time to destination: 10 minutes

◆ Higashi Kumin Bunka Center 東区民文化センター

(10-31 Higashi-kaniya-cho, Higashi-ku, Hiroshima Tel. 082-264-5551)

- ▶ From the Shinkansen Exit of the JR Hiroshima (広島) Station, walking time to destination is 10 minutes.

Please feel free to contact the International Exchange Lounge at 082-247-9715.

E-mail: golounge@pcf.city.hiroshima.jp

February 2017

◆ Nishi Kumin Bunka Center 西区民文化センター

(6-1 Yokogawa Shin-machi, Nishi-ku, Hiroshima Tel. 082-234-1960)

▶ From JR Yokogawa (横川) Station, walking time to destination is 5 minutes.

◆ Asaminami Kumin Bunka Center 安佐南区民文化センター

(22-17 Nakasuji 1-chome, Asaminami-ku, Hiroshima Tel. 082-879-3060)

▶ From *Astramline* Nakasuji (中筋) Station, walking time to destination is 5 minutes.

◆ Saeki Kumin Bunka Center 佐伯区民文化センター

(6-1-10 Itsukaichi-chuo, Saeki-ku, Hiroshima Tel. 082-921-7550)

▶ From Hiroshima Bus Center (*Sogo* Hiroshima, 3F), take a bus to Yakushigaoka-danchi (薬師が丘団地), Shikigaoka-danchi (四季が丘団地), Higashi-kannondai-danchi (東観音台団地) or Ajinadai-kita (阿品台北) and get off at Saeki-kumin Bunka Center-mae (佐伯区民文化センター前). Walking time to destination: 1 minutes

◆ Aki Kumin Bunka Center 安芸区民文化センター

(2-16 Funakoshi-minami 3-chome, Aki-ku, Hiroshima Tel. 082-824-1330)

▶ From JR Kaitaichi (海田市) Station (JR Sanyo Line), walking time to destination is 5 minutes.

◆ Blue Live Hiroshima ブルーライブ広島

(3-12-69 Ujina Kaigan, Minami-ku, Hiroshima Tel. 082-250-5522)

▶ Take a streetcar for Hiroshima-ko (No. 1, 3 or 5) and get off at Kaigan-dori (海岸通). Walking time to destination: 5 minutes

◆ Gewand Halle ゲバントホール

(Wako Palace 21 5F, 2-1-13 Honkawa-cho, Naka-ku, Hiroshima Tel. 082-503-1711)

▶ Take a streetcar and get off at Honkawa-cho (本川町). Walking time to destination: 4 minutes

◆ lifeone221 hall lifeone221 ホール

(2-2-1 Itsukaichi-chuo, Saeki-ku, Hiroshima-shi Tel.082-922-0028)

▶ Take a bus from JR Itsukaichi (五日市) Station (north exit) and get off at Itsukaichi-chuo 2-chome (五日市中央二丁目). Walking time to destination: 5 minutes.

◆ Memorial Cathedral for World Peace 世界平和記念聖堂

(4-42 Nobori-cho, Naka-ku, Hiroshima-shi Tel.082-221-0621)

▶ From Kanayama-cho (銀山町) or Jogakuin-mae (女学院前) Streetcar Stop, walking time to destination is 10 minutes.

◆ Hiroshima Nagarekawa Church 広島流川協会

(8-30 Kami-nobori-cho, Naka-ku, Hiroshima Tel. 082-221-1813)

▶ From Jogakuin-mae (女学院前) or Shukkeien-mae (縮景園前) Streetcar Stop, walking time to destination is 5 minutes.

◆ Hiroshima Ushita Church 広島牛田教会

(2-7-34 Ushita-naka, Higashi-ku, Hiroshima Tel. 082-222-7727)

▶ From JR Hiroshima (広島) Station, walking time to destination is 25 minutes.

◆ Hatsukaichi Bunka Hall Sakurapia はつかいち文化ホールさくらびあ

(1-11-1 Shimo-hera, Hatsukaichi City Tel. 0829-20-0111)

▶ Take a train on the JR Sanyo Line bound for Iwakuni and get off at JR Miyauchi Kushido (宮内串戸) Station. Walking time to destination: 15 minutes

▶ Take a streetcar on the Hiroden Miyajima Line and get off at Hatsukaichi Shiyakusho-mae (廿日市市役所前). Walking time to destination: 8 minutes

◆ Kure City Bunka Hall 呉市文化ホール

(3-10-1 Chuo, Kure City Tel. 0823-25-7878)

▶ From JR Kure (呉) Station (JR Kure Line), walking time to destination is 7 minutes.

Please feel free to contact the International Exch

E-mail: golounge@pcf.city.hir

February 2017

Hiroshima Toyo Carp Schedule 2017

The Toyo Carp (Hiroshima's professional baseball team) plays about 60 games at the MAZDA Zoom-Zoom Stadium Hiroshima every year.

GAME SCHEDULE

MARCH

Wed., 8th, 1:00 pm / vs. Saitama Seibu Lions
 Thurs., 9th, 1:00 pm / vs. Saitama Seibu Lions
 Sun., 12th, 1:00 pm / vs. Tokyo Yakult Swallows
 Sat., 18th, 1:00 pm / vs. Hokkaido Nippon-Ham Fighters
 Sun., 19th, 1:00 pm / vs. Hokkaido Nippon-Ham Fighters
 Mon., 20th, 1:00 pm / vs. Orix Buffaloes
 Fri., 31st / vs. Hanshin Tigers

APRIL

Sat., 1st / vs. Hanshin Tigers
 Sun., 2nd / vs. Hanshin Tigers
 Fri., 7th / vs. Tokyo Yakult Swallows
 Sat., 8th / vs. Tokyo Yakult Swallows
 Sun., 9th / vs. Tokyo Yakult Swallows
 Tue., 18th / vs. Yokohama DeNA Baystars
 Wed., 19th / vs. Yokohama DeNA Baystars
 Thurs., 20th / vs. Yokohama DeNA Baystars
 Tue., 25th / vs. Yomiuri Giants
 Wed., 26th / vs. Yomiuri Giants
 Thurs., 27th / vs. Yomiuri Giants

MAY

Tue., 2nd / vs. Chunichi Dragons
 Wed., 3rd / vs. Chunichi Dragons
 Thurs., 4th / vs. Chunichi Dragons
 Fri., 12th / vs. Yomiuri Giants
 Sat., 13th / vs. Yomiuri Giants
 Sun., 14th / vs. Yomiuri Giants
 Wed., 17th / vs. Yokohama DeNA Baystars
 Thurs., 18th / vs. Yokohama DeNA Baystars
 Tue., 23rd / vs. Tokyo Yakult Swallows
 Wed., 24th / vs. Tokyo Yakult Swallows

JUNE

Fri., 2nd / vs. Chiba Lotte Marines
 Sat., 3rd / vs. Chiba Lotte Marines
 Sun., 4th / vs. Chiba Lotte Marines
 Fri., 16th / vs. Fukuoka SoftBank Hawks
 Sat., 17th / vs. Fukuoka SoftBank Hawks
 Sun., 18th / vs. Fukuoka SoftBank Hawks
 Fri., 23rd / vs. Hanshin Tigers
 Sat., 24th / vs. Hanshin Tigers
 Sun., 25th / vs. Hanshin Tigers
 Fri., 30th / vs. Chunichi Dragons



TICKET OFFICES

◆ MAZDA Zoom-Zoom Stadium Hiroshima

Tickets can be purchased at the ticket booths at the entrances of the stadium (closed on August 6).

Booth Opening Times

11:30am (days with night games) / 11:00am (days with day games)

11:00am – 4:00pm (days when there are no games)

◆ CARPIO (6-7 Hacho-bori, Naka-ku)

OPEN: 10:00am – 4:00pm

CLOSED: No fixed times

TEL: 227-2222

◆ Convenience Stores

Tickets are available at convenience stores such as Lawson, Seven-Eleven, FamilyMart and Sunkus.

ACCESS

MAZDA Zoom-Zoom Stadium Hiroshima:

From JR Hiroshima Station, walking time to the stadium is 10 minutes.

INQUIRIES

Hiroshima Toyo CARP

Tel (082) 223-2141 Fax (082) 502-1189

URL: www.carp.co.jp/

Please feel free to contact the International Exchange Lounge at 082-247-9715.

E-mail: golounge@pcf.city.hiroshima.jp

February 2017

Sanfrecce Hiroshima FC Schedule 2017

GAME SCHEDULE Date / Kick Off / Game / Venue / Ticket Sales

2017 Meiji Yasuda Seimei J1 League

Sat., Feb. 25 / Not finalized / vs. Albirex Niigata / EDION Stadium Hiroshima / Now on sale

TICKETS Seats / Advanced Tickets / At the Door

- ◆ Reserved Seats SS / ¥5,300 / ¥5,900 ◆ Reserved Seats SA / ¥3,700 / ¥4,300
- ◆ Unreserved Seats Adults / ¥2,600 / ¥3,200
- ◆ Unreserved Seats Students (High School Students and under) / ¥1,000 / ¥1,500

ACCESS

◆ EDION Stadium Hiroshima (Hiroshima Big Arch)

Take the Astram-line bound for *Koiki-koen-mae* (広域公園前) and get off at the last station, *Koiki-koen -mae* (広域公園前).

From *Hondori* Station: One way fare - ¥480 Travel time - 35 min.

TICKET OFFICES

- ◆ Sanfrecce Hiroshima Official Shop V-POINT (EDION *Honkan*, 8F / Tel. 248-3317 / 10:00am – 8:00pm / Closed on Mondays except national holidays)
- ◆ EDION Play Guide (*Honkan*, 8F) ◆ Fukuya (Hiroshima Station) (7F) ◆ Alpark Tenmaya (3F)
- ◆ Convenience Stores (FamilyMart, Seven Eleven, CircleKSunkus and Lawson)

INQUIRIES

- ◆ Sanfrecce HIROSHIMA Tel. 233-3233 URL: www.sanfrecce.co.jp



Please feel free to contact the International Exchange Lounge at 082-247-9715.

E-mail: golounge@pcf.city.hiroshima.jp

February 2017

Hiroshima Dragonflies

2016 – 2017 B2 League

🏀 Hiroshima Dragonflies is a professional basketball team in Hiroshima.

GAME SCHEDULE Date / Starting Time / Game / Venue

✧ Only the games scheduled to be held in Hiroshima are listed below. For away games, please check the Hiroshima Dragonflies' official website.

★ FEBRUARY

Sat., February 11 / 2:00pm / vs. Nishinomiya Storks / Hiroshima Sun Plaza
 Sun., February 12 / 1:30pm / vs. Nishinomiya Storks / Hiroshima Sun Plaza
 Sat., February 25 / 2:00pm / vs. Earthfriends Tokyo Z / Hiroshima Sun Plaza
 Sun., February 26 / 1:30pm / vs. Earthfriends Tokyo Z / Hiroshima Sun Plaza

★ MARCH

Sat., March 11 / 2:00pm / vs. Iwate Big Bulls / Hiroshima Sun Plaza
 Sun., March 12 / 1:30pm / vs. Iwate Big Bulls / Hiroshima Sun Plaza
 Fri., March 17 / 7:00pm / vs. Kumamoto Volters / Hiroshima Sun Plaza
 Sun., March 18 / 2:00pm / vs. Kumamoto Volters / Hiroshima Sun Plaza

★ APRIL

Sat., April 8 / 2:00pm / vs. Kagoshima Rebnise / Hiroshima Sun Plaza
 Sun., April 9 / 1:30pm / vs. Kagoshima Rebnise / Hiroshima Sun Plaza
 Sat., April 22 / 2:00pm / vs. Kagawa Five Arrows / Hiroshima Sun Plaza
 Sun., April 23 / 1:30pm / vs. Kagawa Five Arrows / Hiroshima Sun Plaza

★ MAY

Sat., May 6 / 2:00pm / vs. Ehime Orange Vikings / Hiroshima Sun Plaza
 Sun., May 7 / 1:30pm / vs. Ehime Orange Vikings / Hiroshima Sun Plaza

TICKETS (At the Door)

- ◆ Reserved seats: ¥3,700 - ¥16,700
- ◆ Unreserved seats (1st floor seats): Adults-¥3,200 High school students-¥2,600
 Junior high & Elementary school students-¥2,100
- ◆ Unreserved seats (2nd floor seats): Adults-¥2,600 High school students-¥2,100
 Junior high & Elementary school students-¥1,500

TICKET OFFICES

- ◆ Hiroshima Dragonflies Club Shop (Hiroshima Marina Hop / Tel. 082-297-6825 / 10:00am – 8:00pm)
 (The club shop sells advanced tickets only.)
- ◆ Ticket PIA
- ◆ Convenience Stores (FamilyMart, Seven Eleven, CircleKSunkus and Lawson)
- ◆ Hiroshima Power House (Basketball pro Shop)
- ◆ Taiikusha (Sporting-goods store)

Please feel free to contact the International Exchange Lounge at 082-247-9715.

E-mail: golounge@pcf.city.hiroshima.jp

February 2017

ACCESS

- ◆ **Hiroshima Sun Plaza** (1-1 Shoko Center 3-chome, Nishi-ku, Hiroshima City)
From JR Shin Inokuchi (新井口) Station or Shoko Center Iriguchi (商工センター入口) Streetcar Stop, walking time to destination is 5 minutes.
- ◆ **Higashi Hiroshima City Undo Koen Taiikukan** (67-1 Taguchi, Saijo-cho, Higashi Hiroshima City)
Take a bus from JR Saijo (西条) or JR Higashi Hiroshima (東広島) Station (JR Sanyo Line).
- ◆ **Rose Arena** (2-2 Midori-machi, Fukuyama City)
Take a bus from JR Fukuyama (福山) Station (JR Sanyo Line).
- ◆ **Kure City Sogo Taiikukan** (7-1 Hiro Ohshingai 1-chome, Kure City)
From JR Hiro (広島) Station (JR Kure Line), walking time to destination is 5 minutes.

INQUIRIES

- ◆ Hiroshima Dragonflies Tel. 082-297-6825 (Mon. – Fri, 10:00am – 5:30pm)
HP: <http://hiroshimadragonflies.com>
- ◆ NBL (National Basketball League of Japan) Official HP: <http://www.nbl.or.jp>



Please feel free to contact the International Exchange Lounge at 082-247-9715.

E-mail: golounge@pcf.city.hiroshima.jp

February 2017

Seasonal Event Information

February 2017



★ Event schedules are subject to change.
Please contact event organizers before you go.

Oyster Festivals



✿ Hiroshima is well known as the largest producer of oysters in Japan. Winter is the best season for oysters, so many oyster festivals are held at various places in Hiroshima every February. You can buy fresh oysters and also taste various oyster dishes at the festival venues. Most events will end when the oysters are sold out.

Sat., February 4 & Sun., February 5

Hiroshima Food Stadium & Oyster Festival

ひろしまフードスタジアム ^{ふゆ じん ひろしまだい かきまつ} 冬の陣～広島大牡蠣祭り～

TIME: 10:00am – 4:00pm

PLACE: The Open Space of the Former Municipal Baseball Stadium, Moto-machi, Naka-ku, Hiroshima City

ACCESS: Get off at Kamiya-cho-nishi or Genbaku Dome-mae streetcar stop.

ADMISSION FEE: Free

INQUIRIES: Executive Committee (RCC Broadcasting) 082-222-1133

☑ You can enjoy Hiroshima's winter food specialties at this festival.

Sun., February 5

Hiroshima Oyster Charity Bazaar ^{ひろしま} 広島かきチャリティバザール

TIME: From 10:00am onward

PLACE: In front of Volvo Cars Hiroshima Higashi, Deshio-cho, Minami-ku, Hiroshima City

ACCESS: From Minami Kuyakusho-mae Streetcar Stop (Line No.5), walking time to destination is 10 minutes.

INQUIRIES: *Hiroshima-shi Gyogyo Kyodo Kumiai* (Fisheries Cooperative Association) 082-251-5221

☑ You can buy fresh oysters and also taste various oyster dishes.

Sun., February 5

Etajima Oyster Festival ^{えたじまし まつり} 江田島市カキ祭

TIME: 10:00am – 2:00pm

PLACE: *Koyo Minato Koen* (park), Etajima City

ACCESS: Get on a ferry at Hiroshima Port and get off at Koyo Port (a 22 min. ferry ride). Walking time to destination: 3 minutes

INQUIRIES: *Shoko Kanko Ka*, Etajima City Hall 0823-43-1644

☑ You can buy fresh oysters and also taste various oyster dishes.

Please feel free to contact the International Exchange Lounge at 082-247-9715.

E-mail: golounge@pcf.city.hiroshima.jp

February 2017

Sun., February 5**Ondo Oyster Festival** おんど 音戸 かきまつり**TIME:** From 9:00am onward**PLACE:** Parking Lot next to *Ondo Gyogyo Kyodo Kumiai* (Fisheries Cooperative Association), Ondo-cho, Kure City**ACCESS:** Take a bus from JR Kure Station (JR Kure Line) and get off at Ondo Sanbashi (a 20 min. bus ride).**INQUIRIES:** *Ondo Gyogyo Kyodo Kumiai* (Fisheries Cooperative Association) 0823-52-2561

☑ You can buy fresh seafood and also taste various oyster dishes.

Sat., February 11**Kure Suisan Festival** くれすいさん 呉 水産まつり**TIME:** From 10:00am onward**PLACE:** *Kure-shi Chuo Koen* (Kure Central Park), Kure City**ACCESS:** From JR Kure Station (JR Kure Line), walking time to destination is 10 minutes.**INQUIRIES:** Executive Committee 0823-25-3319**Sat., February 11 & Sun., February 12****Miyajima Oyster Festival** みやじま 宮島 かき祭り**TIME:** 10:00am – 3:00pm**PLACE:** In front of Miyajima Pier, Miyajima-cho, Hatsukaichi City**ACCESS:** Get off at JR Miyajima-guchi Station (JR Sanyo Line) or the Miyajima Streetcar Stop (Hiroden Streetcar Miyajima Line), then take a ferry to Miyajima.**INQUIRIES:** *Miyajima Kanko Kyokai* (Tourist Association) 0829-44-2011☑ Stage performances such as *taiko* (traditional Japanese drums) will be held at the venue.A ritual and *kagami-biraki* (cutting a *kagami-mochi*, a traditional Japanese new year's ornament consisting of two round rice cakes) will also be held on the 11th.**Sun., February 12****Ohno Oyster Festival** おおの 大野 かきフェスティバル**TIME:** 9:30am – 3:30pm**PLACE:** Boat Race Miyajima (*Miyajima Kyoteijo*, motorboat racetracks), Hatsukaichi City**ACCESS:** From JR Miyajimaguchi Station (JR Sanyo Line), walking time to destination is 8 minutes.**INQUIRIES:** *Hatsukaichi Kanko Kyokai* (Tourist Association), Ohno Branch 0829-30-3533

☑ There are no parking lots at the venue, so please use public transportation.

Sun., February 12**Tahara Oyster Festival** たはら 田原 かきまつり**TIME:** From 9:00am onward**PLACE:** In front of *Tahara Gyogyo Kyodo Kumiai* (Fisheries Cooperative Association), Tahara, Ondo-cho, Kure City**ACCESS:** Take a bus from JR Kure Station (JR Kure Line) and get off at Tahara Gyokyo-mae (a 40 min. bus ride).**INQUIRIES:** *Tahara Gyogyo Kyodo Kumiai* (Fisheries Cooperative Association) 0823-52-2900

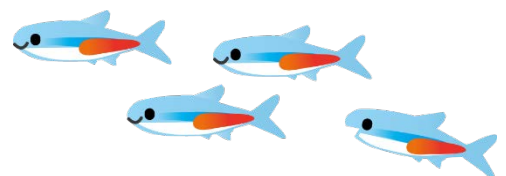
Please feel free to contact the International Exchange Lounge at 082-247-9715.

E-mail: golounge@pcf.city.hiroshima.jp

February 2017

Sun., February 19**Oyster Marché** かき 牡蠣 マルシェ**TIME:** 9:00am – 3:00pm**PLACE:** At the Hiroshima Minato Marché (open space between east and west terminal of Hiroshima Port), Minami-ku, Hiroshima City**ACCESS:** Take the No. 1, 3 or 5 streetcar bound for Hiroden Ujina or Hiroshima-ko and get off at the last stop, Hiroshima-ko.**INQUIRIES:** Hiroshima Minato Marché Office 082-255-6646**Sun., February 19****Takarajima Kurahashi Festival** たからじま 宝島 くらはしフェスティバル**TIME:** 9:00am – 2:00pm**PLACE:** Around *Katsurahama Onsen Kan*, Kurahashi-cho, Kure City**ACCESS:** Take a bus from JR Kure Station (JR Kure Line) and get off at Katsura-hama.**INQUIRIES:** Kure City Hall, Kurahashi Branch 0823-53-1111**Sun., February 19****Saka-cho Suisan Festival** さかちょうぎょきょうすいさん 坂町 漁協 水産 まつりチャリティバザール**TIME:** From 9:00am onward**PLACE:** Paty Fuji Saka (Shopping Mall), Heisei-gahama, Saka-cho, Aki-gun**ACCESS:** From JR Saka Station (JR Kure Line), walking time to destination is 3 minutes.**INQUIRIES:** *Saka-cho Gyogyo Kyodo Kumiai* (Fisheries Cooperative Association) 082-885-0009**Sun., February 26****The 27th Hiroshima City Suisan Festival** だい かいひろしましすいさん 第27回 広島市 水産 まつり**TIME:** 10:00am – 2:00pm**PLACE:** *Hiroshima-shi Suisan Shinko Center* (Fishery and Marine Products Promotion Center), Shoko Center, Nishi-ku, Hiroshima City**ACCESS:** ① From JR Itsukaichi Station (JR Sanyo Line), walking time to destination is 20 minutes.

② From JR Hiroshima Station, take a bus bound for Shoko Center and get off at Inokuchi-shako (a 60 min. bus ride). Walking time to destination: 5 minutes

INQUIRIES: *Suisan Ka*, Hiroshima City Hall 082-504-2252 (082-277-6609 on the event day)**Sun., February 26****Hayase Oyster Festival** はやせ 早瀬 かきまつり**TIME:** From 8:30am onward**PLACE:** Open Space in front of the former *Hayase Shogakko* (elementary school), Ondo-cho, Kure City**ACCESS:** Take a bus from JR Kure Station (JR Kure Line) and get off at Hayase Hoikusho-mae (a 35 min. bus ride).**INQUIRIES:** *Hayase Gyogyo Kyodo Kumiai* (Fisheries Cooperative Association) 0823-56-0470**Sun., February 26****Yasuura Oyster Festival** やすうら まつり 安浦 カキ 祭り**TIME:** From 10:00am onward**PLACE:** Greenpia Setouchi, Yasuura-cho, Kure City

Please feel free to contact the International Exchange Lounge at 082-247-9715.

E-mail: golounge@pcf.city.hiroshima.jp

February 2017

ACCESS: From JR Yasuura Station (JR Kure Line), driving time to destination is 8 minutes.
 ✧ Free shuttle bus service will be available from the station. Advance reservations are required for this service.

INQUIRIES: *Kaneda Suisan* 0823-84-2018 or 0823-84-5392
Greenpia Setouchi 0120-846-620 (toll free, 9:00am – 8:00pm)

Events Held in Hiroshima City



Fri., February 3

Setsubun-sai Festival (Yaikagashi Shinji) at Sumiyoshi Shrine

せつぶんさい やい か しんじ
 節分祭 (焼 嗅 がし 神事)

TIME: From 2:00pm onward

PLACE: Sumiyoshi Shrine, Sumiyoshi-cho, Naka-ku

ACCESS: ① Take the No. 24 bus and get off at Sumiyoshi-cho. Walking time to destination: 5 minutes
 ② Take the No. 3, 6, or 10 bus and get off at Kako-machi. Walking time to destination: 3 minutes

INQUIRIES: Sumiyoshi Shrine 082-241-0104

- ☐ This is a traditional ritual on *Setsubun* day (February 3); *miko*, female attendants of the shrine, will grill one thousand sardine heads and fan smoke with a large paper fan to drive away evil spirits. After the ritual, you can take home a grilled sardine's head on a holly branch, which is a *Setsubun* lucky charm. *Mamemaki*, or "bean-throwing", will also be held.

Fri., February 3

Setsubun-sai Festival at Hiroshima Gokoku Shrine

せつぶんさい ひろしまごこくじんじや
 節分祭 (広島護国神社)

)

TIME: Ritual: From 3:30pm onward; *Mamemaki* (bean-throwing): From 4:00pm onward

PLACE: Hiroshima Gokoku Shrine, Moto-machi, Naka-ku

ACCESS: ① From Kamiya-cho-higashi Streetcar Stop or the Hiroshima Bus Center, walking time to destination is 8 minutes.
 ② From JR Shin-Hakushima Station (JR Sanyo Line), walking time to destination is 15 minutes.

INQUIRIES: Hiroshima Gokoku Shrine 082-221-5590

- ☐ There will be a ritual, shooting arrows & *mame-maki* (bean-throwing) for good luck.

Sun., February 5 & 19

Hiroshima Minato Marché ひろしまみなとマルシェ

TIME: 9:00am – 3:00pm

PLACE: Open Space between East and West Terminal of Hiroshima Port, Minami-ku

ACCESS: Take the No. 1, 3 or 5 streetcar bound for Hiroden Ujina or Hiroshima Port and get off at the last stop, Hiroshima Port.

INQUIRIES: Hiroshima Minato Marché Office 082-255-6646

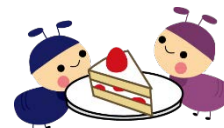
- ☐ You can buy and taste locally-grown fresh vegetables and other food products at the marché.
- ☐ Oyster Marché will also be held on the 19th (see the previous page for more information).



Please feel free to contact the International Exchange Lounge at 082-247-9715.

E-mail: golounge@pcf.city.hiroshima.jp

February 2017

Sun., February 19**Tea Ceremony at Fudoin Temple**きどううらせんけたんこうかい ひろしまだいいちせいねんぶちやかい
茶道裏千家淡交会 広島第一青年部茶会**TIME:** 9:30am – 3:00pm**PLACE:** Fudoin Temple, Ushita-shin-machi, Higashi-ku**ACCESS:** From *Astramline* Fudoin-mae Station, walking time to destination is 2 minutes.**FEE FOR TEA CEREMONY:** ¥700**INQUIRIES:** *Sado Urasenke Tanko Kai, Hiroshima Dai-ichi Seinen-bu* 090-1355-8492**Sun., March 19****“Sweets” Marathon in Hiroshima**ぜんこく ひろしま
全国スイーツマラソン in 広島**TIME:** 8:00am – 5:00pm**PLACE:** *Hiroshima Minato Koen* (park), Minami-ku**ACCESS:** Take the No. 1, 3 or 5 streetcar bound for Hiroshima Port and get off at the last stop, Hiroshima Port.**PARTICIPATION FEE:** High school students and up-¥6,000
Junior high and elementary school students-¥3,000**HOW TO APPLY:** Applications are accepted online.(check the HP (<http://www.sweets-marathon.jp>) for more information.)

Deadline for application – Mon., Feb. 20, 2017

✧ In the event that all application slots are filled, applications will be closed before Feb. 20.

INQUIRIES: Sweets Marathon Office 03-6848-7284 (Mon. – Fri., 10:00am – 6:00pm)HP: <http://www.sweets-marathon.jp>

☑ This is an event in which you can enjoy both running a marathon and eating sweets. “Sweets stations” will be set up instead of water stations on the marathon course. You can eat as much as you like of various kinds of small-sized sweets at each station. Sweets kiosks and Hiroshima Minato Marché will also be set up.

Events Held on Miyajima**Fri., February 3****Setsubun-sai Festival in Miyajima**せつぶんさい
節分祭**TIME:** From 11:00am onward**PLACE:** Daishoin Temple, Miyajima**ACCESS:** Get off at JR Miyajima-guchi Station (JR Sanyo Line) or Miyajima Streetcar Stop (Hiroden Streetcar Miyajima Line), then take a ferry to Miyajima.**INQUIRIES:** Daishoin Temple 0829-44-0111☑ There will be a ritual & *mame-maki* (bean-throwing) for good luck.**Fri., February 3****Hoshi Matsuri at Daiganji Temple in Miyajima (Ritual)**ほしまつ
星祭り**TIME:** From 6:30pm onward**PLACE:** Daiganji Temple, Miyajima**ACCESS:** Get off at JR Miyajima-guchi Station (JR Sanyo Line) or Miyajima Streetcar Stop (Hiroden Streetcar Miyajima Line), then take a ferry to Miyajima.**INQUIRIES:** Daiganji Temple 0829-44-0179

Please feel free to contact the International Exchange Lounge at 082-247-9715.

E-mail: golounge@pcf.city.hiroshima.jp

February 2017

Sun., February 5**Ju-san-mairi Kodomo Mame-maki (Bean-throwing)**じゅうさんまい こどもまめまき
十三参り 子供豆まき**TIME:** From 11:00am onward**PLACE:** Daishoin Temple, Miyajima**ACCESS:** Get off at JR Miyajima-guchi Station (JR Sanyo Line) or the Miyajima Streetcar Stop (Hiroden Streetcar Miyajima Line), then take a ferry to Miyajima.**INQUIRIES:** Daishoin Temple 0829-44-0111

☑ 12-year-old-children who were born in the year of the Rooster (which is also this year in the Chinese zodiac) will throw beans in a “*Mame-maki*” ritual to pray for happiness throughout the year.

Sat., February 11 & Sun., February 12**The 33rd Miyajima Oyster Festival**だい かいみやじま まつ
第33回 宮島 かつ祭り**TIME:** 10:00am – 3:00pm**PLACE:** In front of Miyajima Pier, Miyajima-cho, Hatsukaichi City**ACCESS:** Get off at JR Miyajima-guchi Station (JR Sanyo Line) or the Miyajima Streetcar Stop (Hiroden Streetcar Miyajima Line), then take a ferry to Miyajima.**INQUIRIES:** *Miyajima Kanko Kyokai* (Tourist Association) 0829-44-2011

☑ Stage performances such as *taiko* (traditional Japanese drums) will be held at the venue.

A ritual and *kagami-biraki* (cutting a *kagami-mochi*, a traditional Japanese new year's ornament consisting of two round rice cakes) will also be held on the 11th.

Wed., March 8**Memorial Service for Used Kitchen Knives**ほうちょうくよう
庖丁 供養**TIME:** From 11:00am onward**PLACE:** Daishoin Temple, Miyajima**ACCESS:** Get off at JR Miyajima-guchi Station (JR Sanyo Line) or the Miyajima Stop (Hiroden Streetcar Miyajima Line), then take a ferry to Miyajima.**INQUIRIES:** Daishoin Temple 0829-44-0111

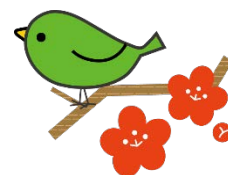
☑ This is a ritual to show gratitude for well-used kitchen knives.

Events Held Outside of Hiroshima City**Sat., Sun. & national holidays****Sake Brewery Opening**ようこそ じょう か まちさいじょう
ようこそ 醸 華 町 西 条**PLACE:** Sake Breweries, Higashihiroshima City**ACCESS:** Get off at JR Saijo Station (JR Sanyo Line).**FEE:** Free**INQUIRIES:** *Saijo Sakagura-dori Kanko Annai-jo*

Tel. & Fax 082-421-2511 (10:00am – 4:00pm, closed on Mondays)

☑ Some sake breweries open to the public on Sat., Sun. & national holidays. Signboards with the words

“ようこそ じょう か まちさいじょう” (“*Yokoso Jokamachi Saijo*”) will be placed in front of the opened breweries.

**Fri., February 3****Setsubun-e at Saikoji Temple**さいこくじ せつぶんえ
西國寺 節 分会**TIME:** 11:00am – 12:30pm**PLACE:** Saikokuji Temple, Onomichi City**ACCESS:** ① From JR Onomichi Station (JR Sanyo Line), walking time to destination is 20 minutes.

② From JR Onomichi Station (JR Sanyo Line), take a bus going east and get off at Saikokuji-shita. Walking time to destination: 5 minutes

INQUIRIES: Saikokuji Temple 0848-37-0321

Please feel free to contact the International Exchange Lounge at 082-247-9715.

E-mail: golounge@pcf.city.hiroshima.jp

February 2017

☐ There will be a ritual, *taiko* (traditional Japanese drum) performance and *mame-maki* (bean-throwing) for good luck.

Fri., February 3

Setsubun-sai at Kibitsuhiko Shrine (Ikkyu Shrine) きびつひこじんじや いっきゅうじんじや せつぶん 吉備津彦神社 (一宮神社) 節分

さい
祭

TIME: Ritual: From 7:30pm onward

Mame-maki (bean-throwing): 8:00pm – 8:30pm

PLACE: Kibitsuhiko Shrine (Ikkyu Shrine), Onomichi City

ACCESS: From JR Onomichi Station (JR Sanyo Line), walking time to destination is 10 minutes.

INQUIRIES: Kibitsuhiko Shrine 0848-22-5545

Sun., February 5

Onabe Festival at Kure Portpia Park くれ おおなべ 呉 ポー大鍋まつり

TIME: 10:00am – 3:00pm

PLACE: Kure Portpia Park, Kure City

ACCESS: Get off at JR Kure-Portpia Station (JR Kure Line).

INQUIRIES: *Kure Portpia Park Tomo no Kai* 0823-38-0560

☐ *Nabemono*, a one-pot dish, is eaten from a large pot and is a typical winter food in Japan. You can taste various kinds of *nabemono* at the festival.

Fri., February 10

Sakagura Walking Tour (Free) さかぐら 酒蔵のまち てくてくガイド

TIME: Tour will start on an as-needed basis between 10:00am and 11:00am.

MEETING PLACE: *Saijo Sakagura-dori Kanko Annai-jo* (Tourist Information Center), Higashihiroshima City

ACCESS: Get off at JR Saijo Station (JR Sanyo Line).

PARTICIPATION FEE: Free

INQUIRIES: *Saijo Sakagura-dori Kanko Annai-jo* Tel. & Fax 082-421-2511

☐ A volunteer guide will show you *Sakagura-dori* (*Sake* Brewery Street). During the tour you will be able to taste *sake* and the purified water that is used to make it.

☐ A regular guided tour (fee-based) is also held every day except on the 10th. An English speaking guide is available. Please contact the *Saijo Sakagura-dori* Tourist Information Center in advance.

February 10 (Fri.), 11 (Sat.), 12 (Sun.) & 13 (Mon.)

Iroha Antique Market おのみちだいこつとうさい 尾道大骨董祭 (いろは こつとうさい 骨董祭)

TIME: 8:00am – 4:00pm ✧ 8:00am – noon on Monday

PLACE: *Tennen Onsen Onomichi Fureai no Sato* (spa facilities), Mitsugi-cho, Onomichi City

ACCESS: ① From JR Shin-Onomichi Station (JR Sanyo *Shinkansen* Line), driving time by taxi to destination is 25 minutes.

② From Onomichi-kita I.C. on the Chugoku Yamanami Expressway, driving time to destination is 10 minutes.

③ Take a free shuttle bus to the spa from JR Higashi Onomichi Station (JR Sanyo Line).

Departure Time (one round service a day)

• JR Higashi Onomichi Station: 8:55am

• Spa: 3:10pm

INQUIRIES: *Iroha* Antique Market Office 090-3155-8229



Please feel free to contact our International Exchange Lounge at 082-247-9715.

E-mail: golounge@pcf.city.hiroshima.jp

February 2017

Fri., February 10 – Mon., March 20

Hina Doll Presentation in Takehara

たけはら 町並み ひな 雛めぐり

**TIME:** Open hours vary according to places.**PLACE:** Around the Special Directory of Historical Buildings Area in Takehara City**ACCESS:** From JR Takehara Station (JR Kure Line, walking time to destination 1 is 15 minutes).**ADMISSION FEE:** Some places will require an admission fee.**INQUIRIES:** Takehara *Kanko Kyokai* (Tourist Association) 0846-22-4331

☐ March 3rd is *Hina Matsuri* (*Hina Festival*), a day to wish girls good health and a long life. Most families with daughters celebrate by displaying *hina* dolls. The dolls are offered sweetened puffed rice (*hina-arare*), white *sake* containing rice malt (*shirozake*), colored lozenge-shaped rice cakes (*hishi-mochi*), etc. (Abstracted from The Japanese-English Dictionary for Conversation about Japan, p.578, Obunsha)

☐ Antique *hina* dolls will be on display at this event. Various events will also be held during the event period.

Fri., February 10 – Sun., February 12

Mihara Shinmei-ichi Marketみはらしんめいいち
三原 神明市**TIME:** 9:00am – 8:00pm**PLACE:** Around the north area of JR Mihara Station, Mihara City**ACCESS:** Get off at JR Mihara Station (JR Sanyo Line).**INQUIRIES:** *Ukishiro Lobby* Tourist Information Center 0848-67-5877

☐ This is a festival with a history of 440 years. Stalls selling plants, *daruma* (Dharma dolls), etc. will be set up.

Sat., February 11 & Sun., February 12

Umemi (Plum Blossoms-viewing) Tea Ceremony at Shotoenしょうとうえん うめみ
松濤園 梅見ちやかい
茶会**TIME:** 9:30am – 4:00pm**PLACE:** Shotoen, Shimokamagari-cho, Kure City**ACCESS:** Take a bus bound for Kamagari from JR Hiro Station (JR Kure Line) and get off at San-no-se.

Walking time to destination: 3 minutes

FEE: Free for the tea ceremony ◇ Admission fee for Shotoen is required.

(Adults & University students - ¥800, High school students - ¥480)
(Junior high & Elementary school students - ¥320)

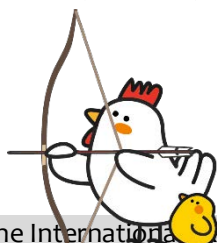
INQUIRIES: *Shotoen* 0823-65-2900

☐ A tea-making demonstration will only be held on the 11th.

Sun., February 12

Oyumi-shinji (Ritual) at Nunakuma Shrineぬなくまじんじや おゆみしんじ
沼名前神社 お弓神事**TIME:** From 2:00pm onward**PLACE:** Nunakuma Shrine, Tomo-cho, Fukuyama City**ACCESS:** Take a Tomotetsu bus from JR Fukuyama Station (JR Sanyo Line) and get off at Tomo-no-ura (a 30 min. bus ride). Waking time to destination: 10 minutes**INQUIRIES:** Nunakuma Shrine 084-982-2050

☐ This is a ritual to pray for good health and fortune throughout the year by shooting an arrow at a target. This ritual is designated as one of Fukuyama City's intangible folklore cultural assets.



Please feel free to contact the International Exchange Lounge at 082-247-9715.

E-mail: golounge@pcf.city.hiroshima.jp

February 2017

Sun., February 12**Shinmeisai Festival at Futamado** ふたまたど しんめいまつり
二窓の神明祭**TIME:** From 2:00pm onward

◇ “Shinmei-san” is an object 20 meters high made with bamboo and wood. It will be lit on fire at 5:30pm.

PLACE: *Tadanoumi Higashi Shogakko* (elementary school), Takehara City**ACCESS:** From JR Tadanoumi Station (JR Kure Line), walking time to destination is 20 minutes.**INQUIRIES:** Komarui Shrine 0846-26-0227

▣ This is a fire festival with more than 400 years of tradition.

Sat., February 18**Ofuku Biraki-sai & Hadaka Matsuri** おふくびらきさい はだかまつり
御福開祭・はだか祭り**TIME:** *Ofuku Biraki-sai* (ritual) – From 7:00pm onward / *Hadaka Matsuri* – From 9:00pm onward**PLACE:** Kui Inari Shrine, Mihara City**ACCESS:** ① From JR Mihara Station (JR Sanyo Line), take a bus bound for Kozan and get off at Koritsu Kui Shinryojo-mae (a 30 min. bus ride). Walking time to destination: 5 minutes

② From Mihara Kui I.C. (Sanyo Expressway), driving time to destination is 15 minutes.

INQUIRIES: Kui Inari Shrine 0847-32-6029▣ *Hadaka Matsuri* is a festival where a group of young men wearing only loincloths rush into the temple after purifying their bodies in the river. Then, they scramble for a pair of *shingi* or *fukugi* (sacred wands) thrown down into the darkness by a temple priest from the upper floor of the temple. The person who catches a sacred wand is assured happiness throughout the year.▣ *Hadaka Matsuri* is a traditional Japanese festival. It is held in various areas of Japan during this season. *Hadaka Matsuri* at Kui Inari Shrine is the only *Hadaka Matsuri* held in Hiroshima Prefecture.**Sat., February 18 – Mon., March 20****Hina Matsuri (Girl's Festival) in Tomo** とも まちなみ まつり
鞆・町並ひな祭**TIME:** 10:00am – 4:00pm ◇ Open hours vary according to facilities.◇ *Tomo-no-ura Rekishi Minzoku Shiryō Kan* (museum): 9:00am – 5:00pm**PLACE:** Tomo-cho, Fukuyama City**ACCESS:** Take a Tomotetsu bus from JR Fukuyama Station (JR Sanyo Line) and get off at Tomo-no-ura (a 30 min. bus ride).**ADMISSION FEE:** Free ◇ Admission Fee for *Tomo-no-ura Rekishi Minzoku Shiryō Kan* is required: Adults & University students-¥150, High school students and under-Free**INQUIRIES:** Executive Committee 080-5614-2778*Tomo-no-ura Rekishi Minzoku Shiryō Kan* 084-982-1121▣ March 3rd is *Hina Matsuri* (*Hina Festival*), a day to wish girls good health and a long life. Most families with daughters celebrate by displaying *hina* dolls. The dolls are offered sweetened puffed rice (*hina-arare*), white sake containing rice malt (*shirozake*), colored lozenge-shaped rice cakes (*hishi-mochi*), etc. (Abstracted from The Japanese-English Dictionary for Conversation about Japan, p.578, Obunsha)▣ Antique *hina* dolls will be on display at this event.**Sat., February 18 – Mon., March 20****Hina Matsuri (girl's festival) in Joge-cho** てんりょうじょうげ
天領上下ひなまつり**PLACE:** *Shirakabe no Machinami* (Shopping Street), Joge-cho, Fuchu City**ACCESS:** From JR Joge Station (JR Fukuen Line), walking time to destination is 3 minutes.**INQUIRIES:** Executive Committee 0847-62-3999▣ March 3rd is *Hina Matsuri* (*Hina Festival*), a day to wish girls good health and a long life. Most families with daughters celebrate by displaying *hina* dolls. The dolls are offered sweetened puffed rice (*hina-*

Please feel free to contact the International Exchange Lounge at 082-247-9715.

E-mail: golounge@pcf.city.hiroshima.jp

February 2017

arare), white sake containing rice malt (*shirozake*), colored lozenge-shaped rice cakes (*hishi-mochi*), etc. (Abstracted from The Japanese-English Dictionary for Conversation about Japan, p.578, Obunsha). *Hina* dolls will be on display at this event.

- ▣ A market area, “*Deko-ichi*”, will be held on Mar. 4 & 5.
- ▣ *Tezukuri-ichi* (handmade market) will be held on Mar. 18 & 19.

Sun., February 19

The 14th International Exchange Festa in Kure だい かいこくさいこうりゅう 第14回 国際交流フェスタ in くれ

TIME: 1:00pm – 4:00pm

PLACE: *Kure Shiyakusho* (Kure City Hall), Kure City

ACCESS: From JR Kure Station (JR Kure Line), walking time to destination is 15 minutes.

INQUIRIES: *Kure City Kokusai Kouryu Kyokai* (Kure International Exchange Association)

0823-25-5607 E-mail: kure-ies@eagle.ocn.ne.jp

Mon., February 20

Hatsuka-no-ichi Market はつか いち 廿日の市



TIME: 8:30am – 10:30am

PLACE: *Shimin Plaza* (in front of Hatsukaichi City Hall), Hatsukaichi City

ACCESS: From Hatsukaichi Shiyakusho-mae (Hiroden Streetcar Miyajima Line), walking time to destination is 10 minutes.

INQUIRIES: *Hatsukaichi Kanko Kyokai* (Tourist Association) 0829-31-5656

Fri., March 3

Mimi (ear) Festival & Memorial Service for Dolls みみまつ にんぎょうくようさい 耳祭り・人形供養祭

TIME: From 1:30pm onward

PLACE: Mimigo Shrine (inside Oyama Shrine), Innoshima Habu-cho, Onomichi City

ACCESS: From Innoshima-kita I.C. (*Shimanami Kaido* Expressway), driving time to destination is 10 minutes.

INQUIRIES: Oyama Shrine 0845-22-0827

- ▣ March 3rd is ear day in Japan. The God of Ears (“*Mimigo-sari*”) is enshrined in Mimigo Shrine, which is rare in Japan. A ritual will be held to pray for people who have ear disorders to get well. A memorial service for dolls will also be held.

Sun., April 16 ☛ A pre-event will be held on April 15.

Grand Tour Setouchi 2017 (cycling event) グラン・ツール・せとうち 2017

SCHEDULE: Apr. 15: Pre-event & Registration (10:00am – 5:00pm)

Apr. 16: Opening Ceremony & Cycling

PLACE: *Setouchi Shimanami Kaido*, Onomichi City

START & GOAL:

- ◆ 140km, 110km & 70km course: *Mukaishima Undo Koen* (park), Onomichi City
Schedule: Opening ceremony: From 7:00am onward
Start: 7:30am / Finish: 5:00pm
- ◆ 40km course: *Manda Hakkou Company*, Onomichi City
Schedule: Opening ceremony: From 9:30am onward
Start: 10:00am / Finish: 4:00pm

ACCESS:

Mukaishima Undo Koen: From Mukaishima I.C. on the Shimanamikaido Expressway, driving time to destination is 5 minutes.

Manda Hakkou Company: From Innoshima-kita I.C. on the Shimanamikaido Expressway, driving time to destination is 10 minutes.

Please feel free to contact the International Exchange Lounge at 082-247-9715.

E-mail: golounge@pcf.city.hiroshima.jp

February 2017

HOW TO PARTICIPATE:

Enrollment will be accepted online from Sat., December 17, 2016 to Sun., February 26, 2017.

◇ Enrollment will be closed when all 2,300 spots are full.

ELIGIBILITY FOR PARTICIPATION:

- Those who are elementary school students and up.
- Those who have the physical strength to complete the full distance of each course within the time limit.
- Those who agree to abide by event rules.
- Those who finish registration on April 15. *Registration will NOT be accepted after April 15.*

PLACE: Paul Bell Square, in front of JR Onomichi Station

TIME: 10:00am – 5:00pm

COURSE & PARTICIPATION FEE:

- Shimanami Master Course (140km): ¥9,000 ◆ 800 people will be accepted.
- Shimanami Middle Course (110km): ¥8,000 ◆ 600 people will be accepted.
- Shimanami Short Course (70km): ¥7,000 ◆ 600 people will be accepted.
- Shimanami Happy Course (40km): ¥5,500 ◆ 300 people will be accepted.

INQUIRIES: Grand Tour Setouchi Office (inside Hiroshima TV)

082-249-1218 (Mon. – Fri., 10:00am – 6:00pm) E-mail: cycle@htv.jp

HP: <http://www.htv.jp/grandtour2017/>

- ▣ Setouchi Shimanami Kaido is the expressway connecting six islands in the Seto Inland Sea with seven bridges between Onomichi City (Hiroshima Pref.) and Imabari City (Ehime Pref.).
- ▣ There will be aid stations where drinks and light meals are available.



Please feel free to contact the International Exchange Lounge at 082-247-9715.

E-mail: golounge@pcf.city.hiroshima.jp

February 2017

Municipal Facilities



Facilities

(Address / Telephone / Open Hours / Closed / Admission Fee / URL)

Admission is generally allowed up to 30 min. prior to closing.

Hiroshima City Forest Park & Insectarium

(173 Fujigamaru, Fukuda-cho, Higashi-ku 732-0036 / Forest Park: 899-8241, Insectarium: 899-8964 / Forest Park: 9:00am - 4:30pm; Insectarium: 9:00am - 4:30pm / Closed: Forest Park - Wednesdays; Insectarium - Wednesdays / Admission Fees for the Insectarium: Adults-¥510, Seniors & High school students-¥170, Junior high & Elementary school students-Free (Free admission for high school students on Saturdays (except on national holidays and during school holidays)) / Forest Park: <http://www.daiichib-shitei.com/forest/> Insectarium: <http://www.hiro-kon.jp/>)

Events at the Forest Park

- 🍷 **Let's Eat a Baked Sweet Potato** / Sat., Feb. 4 & Sun., Feb. 5 / 10:00am - noon / *Chuo Hiroba* / Fee: ¥100/sweet potato
 - ◇ Baked sweet potatoes will be available to the first 100 people each day.
 - ◇ This will be canceled if there is bad weather.
- 🍷 **St. Valentine's Day Event** / Sat., Feb. 11 & Sun., Feb. 12 / 10:00am - 2:00pm / Next to *Kanri Center* (in front of *papillon tower*)
 - ◇ Free photo service and chocolates for male visitors will be offered to the first 100 couples or groups each day.
- 🍷 **Let's Make & Eat a Baumkuchen** / Sun., Feb. 19 & 26 / 9:30am - 1:00pm ◇ Participants will be accepted from 9:00am at the *kanri center* on the day of. Numbered tickets will be distributed at the gate. / *Chuo Hiroba* / Fee: ¥200 / group
 - ◇ The first 70 groups will be accepted each day.
 - ◇ This will be canceled if there is bad weather.

Events at the Insectarium

- 🍷 **Craft Workshop with Silkworm Cocoons** / Feb. 4 (Sat.), 5 (Sun.), 18 (Sat.), 19 (Sun.), 25 (Sat.) & 26 (Sun.) / 9:00am - 3:00pm / Fee: ¥120 for materials, plus museum admission fee
- 🍷 **Touch Insects!** / Mar. 12 (Sun.), 18 (Sat.), 19 (Sun.), 20 (Mon.) & 26 (Sun.) / ① 10:00am - noon ② 1:00pm - 3:00pm

- 🍷 **Saturday Insect Lecture / Owning Beetle** / Sat., Mar. 4 ◇ Advance reservations are required.

The Hiroshima Botanical Garden

(3-495 Kurashige, Saeki-ku 731-5156 / 922-3600 / 9:00am - 4:30pm / Closed on Fridays / Adults-¥510, Seniors & High school students-¥170, Junior high and Elementary school students-Free (Free admission for high school students on Saturdays (except on national holidays and during school holidays)) / <http://www.hiroshima-bot.jp/>)

<Exhibitions> Exhibitions will close at 3:30pm on their last day.

◆ Tenji Shiryō-kan

- 🍷 **Japanese-style Botanical Paintings** / Sat., Feb. 11 - Thurs., Mar. 2
- 🍷 **Floral Decorations** / Sat., Mar. 4 - Thurs., Mar. 9
- 🍷 **The World of Plant Dyeing** / Sat., Mar. 11 - Wed., Apr. 19

◆ Tenji Onshitsu (hothouse exhibitions)

- 🍷 **Kalanchoe & Winter Plants** / Sat., Jan. 14 - Sun., Feb. 12
- 🍷 **Omoto (Japanese Sacred Lily)** / Wed., Feb. 15 - Mon., Feb. 20
- 🍷 **Orchids** / Sat., Feb. 25 - Sun., Mar. 5
- 🍷 **Geraniums** / Sat., Mar. 11 - Wed., Apr. 19

◆ Okugai Tenji-jo (outdoors exhibits)

- 🍷 **Christmas Roses** / Sat., Feb. 25 - Sun., Mar. 5

<Events>

- 🍷 **St. Valentine's Day Festival** / Sat., Feb. 11 - Tue., Feb. 14

<Lectures>

- 🍷 **Lecture on Chocolate & Cacao** / Sat., Feb. 11 / Time schedule has not been finalized yet.
- 🍷 **Cacao Grinding Demonstration** / Sun., Feb. 12 / Time schedule has not been finalized yet.
- 🍷 **Junior Project** / Sun., Feb. 12 & Mar. 12 / ① 11:00am - noon ② 1:30pm - 2:30pm
- 🍷 **Gallery Talk on Japanese-style Botanical Paintings Exhibition** / Sun., Feb. 19 / 11:00am - noon
- 🍷 **How to Grow Omoto (Japanese Sacred Lily)** / Sun., Feb. 19 / 1:30pm - 2:30pm
- 🍷 **Plant Sketching** / Sun., Feb. 19 / 1:30pm - 3:30pm
- 🍷 **Christmas Roses** / Feb. 25 (Sat.) & 26 (Sun.); Mar. 4 (Sat.) & 5 (Sun.) / 11:00am - noon

Please feel free to contact the International Exchange Lounge at 082-247-9715.

E-mail: golounge@pcf.city.hiroshima.jp

February 2017

- 🌸 Floral Decorations / Sun., Mar. 5 / ① 11:00am - noon ② 1:30pm - 2:30pm
- 🌸 Lecture on Orchids / Sun., Mar. 5 / 1:30pm - 2:30pm

🏛️ Children's Museum of Culture and Science

(5-83 Moto-machi, Naka-ku 730-0011 / 222-5346 / 9:00am - 5:00pm / Closed on Feb. 6, 13, 14, 20 & 27 / Admission fee for planetarium is required (see below). / <http://www.pyonta.city.hiroshima.jp/>)

★ Planetarium ★

👉 Admission Fee for Planetarium:

- Adults-¥510, Seniors & High school students-¥250, Junior high & Elementary school students-Free
- ✧ Free admission for high school students on Saturdays (except on most national holidays and during school holidays).
- Admission fee for adults is ¥250 on the second Saturday of every month (except on most national holidays and during school holidays).

☆ Planetarium Program

- ◆ Adventures of LEAF the little leaf (45 min.) / Until Sun., Mar. 5 / ◆ Weekdays: 11:00am ◆ Sat., Sun., national holidays: ① 10:00am ② 3:00pm / Adults-¥510, Seniors & High school students-¥250
- ◆ Calendars of Ancient Times / Until Mon., Jul. 17 / ◆ Weekdays: 2:00pm ◆ Sat., Sun., national holidays: ① 11:00am ② 2:00pm / Adults-¥510, Seniors & High school students-¥250
- ☆ Full Dome Screen Film: Tiny Giants ('14 UK, 45 min.) / Until Fri., Apr. 28 / ◆ Weekdays: 3:00pm ◆ Sat., Sun., national holidays: 1:00pm / Adults-¥510, Seniors & High school students-¥250
- ☆ Refretarium: Winter Program (20 min.) / Until Fri., Mar. 17 (except Sundays) / ◆ Weekdays: 1:00pm ◆ Sat., national holidays: 4:00pm / High school students and up-¥200
- ✧ This is a program to refresh your mind and body during lunch time while watching the starry sky and listening to music. Although the main target of this program is adults, anyone who wishes to rejuvenate themselves is welcome.
- ☆ Starry Sky Tour: Tonight's Starry Sky & Calendar and Astronomy (50 min.) / Until Sun., Apr. 16 / 4:00pm / Adults-¥510, Seniors & High school students-¥250

- ☆ Astronomical Observation / Sat., Feb. 4
 - ◆ Planetarium Constellation Projection / 6:00pm - 6:50pm ✧ Doors will open at 5:50pm. / 4F, Planetarium / Fee: Adults-¥510, Seniors & High school students-¥250 ✧ Tickets will be sold from 9:00am on the day of.
 - ◆ Astronomical Observation / 7:00pm - 8:00pm / In front of the museum entrance / Fee: Free
 - ✧ In the event of bad weather, outdoors astronomical observations will be canceled. Only the planetarium constellation projection will be held. Please check the museum's website for cancellations.
 - ✧ You may attend both or either the constellation projection or the astronomical observation.
 - ✧ Reservations are not required.

★ Events ★

- ☆ The 9th Hiroshima Children's Rakugo Performance / Sun., Feb., 19 / 2:00pm - 4:30pm ✧ Doors will open at 1:45pm. / 1F, Apollo Hall (250 seats) / Admission fee: Free
- ☆ Craft Workshops / Feb. 5 (Sun.), 12 (Sun.), 19 (Sun.) & 25 (Sat.) / 1:00pm - 3:30pm / For children under elementary school entry age, elementary school students (1st - 3rd grade) and their guardians / 3F, Kosaku-shitsu (Craft Room) / Fee: ¥30 for materials
- ✧ Each day's program is different. For more information, please contact the museum.
- ☆ Science Show / ① 1:30pm - 2:00pm ② 3:00pm - 3:30pm / 1F, Science Studio / Fee: Free
 - ◆ Science of Fire / Sat., Feb. 4
 - ◆ Static Electricity / Sat., Feb. 18

🌐 The events listed below require advance applications.

To APPLY: Send an *ofuku-hagaki* (return postcard) to the museum, postmarked by each event's application deadline with the following information: applicants' names, address, telephone number, school year and the event name and time you wish to attend.

Science Workshops

- ◆ Flight Science ③: Make a Toy Airplane / 飛行ひこうの科学 ③はばたき飛行機ひこうき ("Hikou no Kagaku ③ Habataki hikouki") / Sun., Mar. 12 / 1:30pm - 4:00pm / For elementary (3rd - 6th grade) & junior high school students / Fee: ¥400 / Closing date for applications: Sun., Feb. 26
- ✧ 16 people will be selected at random by a drawing of names.


Please feel free to contact the International Exchange Lounge at 082-247-9715.






E-mail: golounge@pcf.city.hiroshima.jp

February 2017

Craft Workshop

- ◆ Stained Glass / **大人の創作教室 ステンドグラス** (*Otona no sosaku kyoshitsu: Stained glass*) / Sat., Mar. 4 / ① 9:30am - noon ② 1:30pm - 4:00pm / For high school students and up / Fee: ¥1,500 / Closing date for applications: Sat., Feb. 18
 - ◇ 8 people will be selected at random by a drawing of names for each time slot.
- ◆ Craft Workshop with a Motor / **モーターを使った工作** (*Motor wo tsukatta kousaku*) / Sun., Mar. 5 / 9:30am - noon / For elementary school students / Fee: ¥500 / Closing date for applications: Sun., Feb. 19
 - ◇ 20 people will be selected at random by a drawing of names.

 **Hiroshima City Asa Zoological Park**
(Asa-cho Dobutsuen, Asakita-ku 731-3355 / 838-1111 / 9:00am - 4:30pm / Closed: Thursdays / Adults-¥510, Seniors & High school students-¥170, Junior high & Elementary school students-Free / <http://www.asazoo.jp/>)

-  **Backyard Guide Tour** / Sat., Feb. 4, 11 & 18 / ① 11:00am ② 1:30pm / Please gather near the entrance at 9:00am on each activity day. The first 20 - 30 people can participate. The number of participants will differ depending on where you visit. We will explore a different place on each trip.
-  **Let's Learn More about Animals through Manga & a Quiz Rally** / Wed., Feb. 1 - Sun., Feb. 26
 - ☺ A quiz rally will be held on Sun., Feb. 5, 12, 19 & 26. The first 1,000 people can participate each day.
-  **Valentine's Day at the Zoo** / Sat., Feb. 11 - Tue., Feb. 14 / 9:00am - 4:00pm
 - ☺ Drink tickets will be given to unmarried couples who visit the zoo.
-  **Giant Salamander Facility Tour** / Sat., Feb. 25 / 11:00am - 11:30am ◇ Reservations will be accepted from 9:00am at the main entrance until 20 spots are filled.
-  **Meet the Black Rhinoceros named Hana** / Sat., Feb. 25 / ① 1:30pm ② 1:45pm
 - ◇ Participation tickets will be distributed from 9:00am at the main entrance until 10 spots are filled for each time slot.
 - ✧ The black rhinoceros, *Hana*, is the world's oldest living black rhinoceros.



Numaji Transportation Museum (Hiroshima City Transportation Museum)

(2-12-2 Chorakuji, Asaminami-ku 731-0143 / 878-6211 / 9:00am - 5:00pm / Closed: Feb. 6, 7, 8, 13, 14, 20 & 27 / Adults-¥510, Seniors & High school students-¥250, Junior high school students or younger-Free / <http://www.vehicle.city.hiroshima.jp>)

-  **Science Show: Experiment Show with Air** / Sat., Feb. 11 & Sun., Feb. 12 / ① 11:30am - 11:50am ② 1:30pm - 1:50pm ③ 2:30pm - 2:50pm / 1F, *Tamokuteki Hall* / Fee: Free
-  **Exhibition on a Streetcar Exposed to the A-Bomb** / Sat., Feb. 18 / ① 11:00am - noon ② 1:30pm - 3:00pm / *Okugai Hiroba* (outdoor open space) / Fee: Free
 - ◇ Exhibition will be canceled if it is bad weather.
-  **Vehicle Land: Playing with Toy Vehicles** / Sat., Feb. 18 & Sun., Feb. 19 / 1:00pm - 3:45pm / 1F, *Tamokuteki Hall* / Fee: Free
-  **Astramline Rail Yard Tour** / Sun., Feb. 26 / ① 10:30am - 11:10am ② 11:30am - 12:10pm / Fee: Admission fee for the museum (Adults-¥510, Seniors & High school students-¥250)

TO APPLY: Send an *ofuku-hagaki* (return postcard) with all applicants' names, address, telephone number, age, time (①or②) you wish to attend and the event name **アストラムライン長楽寺車両基地見学会** (*Astramline Chorakuji sharyo-kichi kengaku-kai*) to the museum by Sun., Feb. 12. 60 people will be selected at random by a drawing of names for each time slot.

 - ◇ Parents with baby buggies should refrain from participating in the event.
-  **Children's Craft Workshops** / Feb. 5 (Sun.), 11 (Sat.), 12 (Sun.), 19 (Sun.) & 26 (Sun.) / 1:00pm - 3:30pm / For preschoolers, elementary school students and their guardians / 1F, Craft Room / Fee: ¥50 for materials ◇ The first 100 groups can participate on the day of.
-  **Craft Workshop for Elementary School Students: Motor Buggy** / Sat., Feb. 25 / 1:00pm - 4:00pm / 1F, Craft Room / For elementary school students (1st - 4th grade students should be accompanied by their guardians.) / Fee: ¥400 for materials

TO APPLY: Send an *ofuku-hagaki* (return postcard) with the applicant's name, name of the school the applicant belongs to, grade, address, telephone number, event date and the workshop name **小学生工作教室: モーターバギー** (*Shogakusei kousaku kyoushitsu: motor buggy*) to the museum by Wed., Feb. 15. 20 people will be selected at random by a drawing of names.

Please feel free to contact the International Exchange Lounge at 082-247-9715.

E-mail: golounge@pcf.city.hiroshima.jp

February 2017

🌩 Hiroshima City Ebayama Museum of Meteorology

(1-40-1 Eba-minami, Naka-ku 730-0835 / 231-0177 / 9:00am - 5:00pm / Closed on Mondays & Feb. 14 / Adults-¥100, Seniors & High school students-¥50, Junior high & Elementary school students-Free (Admission free for high school students on Saturdays except during school holidays) / <http://www.ebayama.jp/>)

- ⊕ From January 12, events will not be held temporarily due to renovations of refrigeration and heating equipment.
- ✧ You can see the permanent exhibition as usual.

🏰 Hiroshima City Museum of History and Traditional Crafts

(2-6-20 Ujina-miyuki, Minami-ku 734-0015 / 253-6771 / 9:00am - 5:00pm / Closed on Mondays & Feb. 14 / Adults-¥100, Seniors & High school students-¥50, Junior high school students and younger-Free / <http://www.hiroins-net.ne.jp/kyodo/>)

📖 Special Exhibitions: Hiroshima & Sports / Sat., Feb. 25 - Sun., Apr. 16

📖 Workshops, etc.

- ◆ Make *Wara-zori*, flip-flops made of straw / Sat., Mar. 4 / 1:00pm - 3:00pm / Elementary school students and up / Fee: ¥300 (Admission fee for the museum is also required.)
 - ✧ Applications will be accepted by phone or fax between Feb. 1 and 4. 20 people will be selected at random by a drawing of names.
- ◆ Make a *Bota-mochi*, a rice cake covered with *anko*, bean jam / Sat., Mar. 18 / 1:00pm - 3:00pm / Elementary school students / Fee: ¥200 (Admission fee for the museum is also required.)
 - ✧ Applications will be accepted by phone or fax between Mar. 1 and 4. 20 people will be selected at random by a drawing of names.

🎧 Hiroshima City Cinematographic and Audio-Visual Library

(3-1 Moto-machi, Naka-ku 730-0011 / 223-3525 / 10:00am - 8:00pm (Tue.-Sat.), 10:00am - 5:00pm (Sun., national holidays & August 6) / Closed on Mondays & Feb. 14 / 35mm Film Showings ⇒ Adults-¥510, Seniors & High school students-¥250, Junior high school students or younger-Free; Other Film Showings ⇒ Adults-¥380, Seniors & High school students -¥180, Junior

high school students or younger -Free, Admission free for foreign students (Please show your student ID or the Hiroshima International Center Complimentary Pass.) / <http://www.cf.city.hiroshima.jp/eizou/>)

🎬 February Special Showings of Masterpieces of Japanese Film: Setsuko Hara, an actress (Screened in Japanese only)

👤 Admission Fee:

- Adults-¥510, Seniors (65 years old and up) & High school students-¥250, Junior high & Elementary school students-Free
- ★ Feb. 10 (Fri.), 16 (Thurs.) & 23 (Thurs.): Adults-¥380, Seniors (65 years old and up) & High school students-¥180, Junior high & Elementary school students-Free
- ★ Sat., Feb. 18 & 25: Free admission for high school students

- Fri., Feb. 10 / ① 10:30am ② 2:00pm ③ 6:30pm
Kochiyama Soshun / 河内山宗俊 (1936, Nikkatsu (Kyoto), Uzumasa Hasei, 81 min., B&W, 16mm film) / Director: Sadao Yamanaka / Cast: Chojuro Kawarazaki, Kanemon Nakamura, Setsuko Hara, Shizue Yamagishi
- Sat., Feb. 11 / ① 10:30am ② 2:00pm
Waga seishun ni kui nashi / わが青春に悔なし (1946, Toho, 110 min., B&W, 35mm film) / Director: Akira Kurosawa / Cast: Setsuko Hara, Susumu Fujita, Denjiro Okochi, Haruko Sugimura
- Wed., Feb. 15 / ① 10:30am ② 2:00pm ③ 6:30pm
Anjo-ke no buto-kai / 安城家の舞踏会 (1947, Shochiku (Ofuna), 89 min., B&W, 35mm film) / Director: Kozaburo Yoshimura / Cast: Setsuko Hara, Yumeko Aizome, Masayuki Mori, Osamu Takizawa
- Thurs., Feb. 16 / ① 10:30am ② 2:00pm ③ 6:30pm
Yuwaku / 誘惑 (1948, Shochiku (Ofuna), 85 min., B&W, 16mm film) / Director: Kozaburo Yoshimura / Cast: Setsuko Hara, Shin Saburi, Haruko Sugimura, Akira Yamauchi
- Fri., Feb. 17 / ① 10:30am ② 2:00pm ③ 6:30pm
Aoi sanmyaku / 青い山脈 (1949, Fujimoto Production, 92 min., B&W, 35mm film) / Director: Tadashi Imai / Cast: Setsuko Hara, Michiyo Kogure, Ryo Ikebe, Hajime Izu
- Sat., Feb. 18 / ① 10:30am ② 6:00pm
Zoku aoi sanmyaku / 続 青い山脈 (1949, Fujimoto Production, 90 min., B&W, 35mm film) / Director: Tadashi Imai / Cast: Setsuko Hara, Ryo Ikebe, Yoko Sugi, Setsuko Wakayama



Please feel free to contact the International Exchange Lounge at 082-247-9715.

E-mail: golounge@pcf.city.hiroshima.jp

February 2017

- **Wed., Feb. 22 / ① 10:30am ② 2:00pm ③ 6:30pm**
Kofuku no genkai / 幸福の限界 (1948, Daiei (Kyoto), 89 min., B&W, 35mm film) / Director: Keigo Kimura / Cast: Setsuko Hara, Isamu Kosugi, Susumu Fujita, Haruyo Ichikawa
 - **Thurs., Feb. 23 / ① 10:30am ② 2:00pm ③ 6:30pm**
Ojosan kanpai / お嬢さん乾杯 (1949, Shochiku (Ofuna), 89 min., B&W, 16mm film) / Director: Keisuke Kinoshita / Cast: Shuji Sano, Setsuko Hara, Keiji Sada, Takeshi Sakamoto
 - **Fri., Feb. 24 / ① 10:30am ② 2:00pm ③ 6:00pm**
Banshun / 晩春 (1949, Shochiku (Ofuna), 108 min., B&W, 35mm film) / Director: Yasujiro Ozu / Cast: Chishu Ryu, Setsuko Hara, Yumeji Tsukioka, Haruko Sugimura
 - **Sat., Feb. 25 / ① 10:30am ② 2:00pm ③ 6:00pm**
Bakushu / 麦秋 (1949, Shochiku (Ofuna), 125 min., B&W, 35mm film) / Director: Yasujiro Ozu / Cast: Setsuko Hara, Chishu Ryu, Chikage Awashima, Haruko Sugimura
- 🎬 **Manoel de Oliveira para Sempre** (Screened in original language with Japanese subtitles)
- 👉 **Admission Fee:**
 Adults-¥510, Seniors (65 years old and up) & High school students-¥250, Junior high & Elementary school students-Free
 ★ Sat., Feb. 4: Free admission for high school students
- **Wed., Feb. 1 / ① 2:00pm ② 6:30pm**
Os Canibais (1988, 91 min., color, 35mm film, Japanese subtitles) / Director: Manoel de Oliveira / Writer: Manoel de Oliveira / Cast: Luís Miguel Cintra, Leonor Silveira, Diogo Dória
 - **Thurs., Feb. 2 / ① 2:00pm ② 6:00pm**
'Non', ou a Vã Gloria de Mandar (1990, 110 min., color, 35mm film, Japanese subtitles) / Director: Manoel de Oliveira / Writer: Manoel de Oliveira / Cast: Luís Miguel Cintra, Diogo Dória, Miguel Guilherme
 - **Fri., Feb. 3 / ① 2:00pm ② 6:00pm**
A Divina Comédia (1991, 141 min., color, 35mm film, Japanese subtitles) / Director: Manoel de Oliveira / Writer: Manoel de Oliveira / Cast: Maria de Medeiros, Miguel Guilherme, Luís Miguel Cintra
 - **Sat., Feb. 4 / ① 10:30am ② 3:00pm**
Vale Abraão (1993, 188 min., color, 35mm film, Japanese subtitles) / Director: Manoel de Oliveira / Writer: Manoel de Oliveira / Cast: Leonor Silveira, Cécil Sanz de Alba, Luís Miguel Cintra
 - **Sun., Feb. 5 / ① 10:30am ② 2:00pm**
A Caixa (1994, 96 min., color, 35mm film, Japanese subtitles) / Director: Manoel de Oliveira / Writer: Manoel de Oliveira / Cast: Luís Miguel Cintra, Beatriz Batarda, Filipe Cochofel

- **Thurs., Feb. 9 / ① 2:00pm ② 6:30pm**
Um Filme Falado (2003, 95 min., color, 35mm film, Japanese subtitles) / Director: Manoel de Oliveira / Writer: Manoel de Oliveira / Cast: Leonor Silveira, Filipa de Almeida, Catherine Deneuve

🎬 **Family Theater**
 (Screened in Japanese only)

- **Sun., Feb. 12 / ① 10:30am ② 2:00pm / Adults-¥510, Seniors (65 years old and up) & High school students-¥250, Junior high & Elementary school students-Free**
Tenkosei / 転校生 (1982, Nihon Terebi Hosomo, ATG, 113 min., color, 35mm film) / Director: Nobuhiko Obayashi / Cast: Satomi Kobayashi, Toshinori Omi, Kirin Kiki, Makoto Sato
- **Sun., Feb. 26 / ① 10:30am ② 2:00pm / Adults-¥380, Seniors (65 years old and up) & High school students-¥180, Junior high & Elementary school students-Free**
Himitsu kessha taka no tsume the movie 3: <http://takanotsume.jp> wa eien ni / 秘密結社鷹の爪 The Movie 3 : <http://鷹の爪.jp> は永遠に (2010, "Himitsu kessha taka no tsume the movie 3" Seisaku linkai, 94 min., color, Blu-ray) / Director: FROGMAN / Cameo director: Takashi Yamazaki / Voice actor: FROGMAN, Yukie Kawamura, Eiji Bando

🎬 **"Sound and Silent"**
 ★ Enjoy a silent film with music.
 (Piano: Masayasu Yamashita)

👉 **Admission Fee:**
 Adults-¥380, Seniors (65 years old and older) & High school students-¥180, Junior high & Elementary school students-Free

- **Sun., Feb. 19 / 2:00pm**
Sunrise: A Song of Two Humans (1927, USA, 95 min., B&W, silent) / Director: F. W. Murnau / Cast: George O'Brien, Janet Gaynor

🎬 **Record Concert (Free admission)**

- **Sun., Feb. 26 / 2:00pm - 4:00pm**
Magic of Opera Vol. 12: Manon (by Jules Emile Frédéric Massenet)



Please feel free to contact the International Exchange Lounge at 082-247-9715.

E-mail: golounge@pcf.city.hiroshima.jp

February 2017

Library News

February 2017

Recommended Books for This Month

Sushi Simplicity:
Making Mouth-Watering Sushi at Home
By Miyuki Matsuo (Vertical, c2013)

Practical Origami:
Folding Your Way to Everyday Accessories
Edited by Shufunotomo (Vertical, c2012)

Fahrenheit 451
By Ray Bradbury, Introduction by Neil Gaiman
(Simon & Schuster, 2013)

The Extraordinary Education of Nicholas Benedict
By Trenton Lee Stewart, Illustrated by Diana Sudyka
(Little, Brown and Company, 2013)

Mr. Penumbra's 24-Hour Bookstore
By Robin Sloan (Picador, 2013)

What other books should we add to our collection? Your suggestions are always welcome!



Library Corner

LOCATION: International Conference Center Hiroshima (ICCH), 1st Floor
T E L L : (082)247-9715
H O U R S : 9:00 am - 7:00 pm (From April 1 to September 30)
9:00 am - 6:00 pm (From October 1 to March 31)
C L O S E D : December 29th through January 3rd
BOOK LOAN POLICY:

Up to three books may be borrowed for a two-week period. To obtain an ICCH Library Card, you need to bring identification which has your address, and for foreign residents, your period of stay in Japan. (A Japanese driver's license, student identification card, passport or resident card is an acceptable form of identification.)

Please feel free to contact the International Exchange Lounge at 082-247-9715.

E-mail: golounge@pcf.city.hiroshima.jp

February 2017



図書だより

2017年2月

今月のおすすめ図書

魔法のときめき英単語：中学英語をネイティブレベルにアップグレード

リサ・ヴォート／著（Jリサーチ出版，2013年）

ネイティブの感覚で前置詞が使える

ロス 典子／著（ベレ出版，2010年）

英文翻訳術

安西 徹雄／著（筑摩書房，1995年）

35日間世界一周 Part 4 南米・天空都市編

水谷 さるころ／著（イースト・プレス，2013年）

ロシア暮らしの中なかのかわいい民芸

小我野 明子／著（パイ インターナショナル，2013年）

本のリクエストなど図書コーナーに関するご要望はスタッフまでお気軽にお申し出ください。



図書コーナー

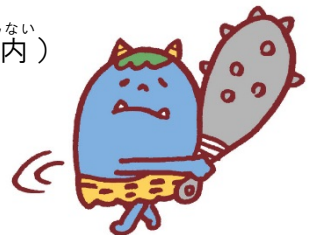
場所：広島国際会議場 1F・国際交流ラウンジ（平和記念公園内）
TEL (082)247-9715

開館時間：9:00am - 7:00pm (4月1日から9月30日まで)
9:00am - 6:00pm (10月1日から3月31日まで)

休館日：12月29日～1月3日

貸出：図書は2週間を期限として、1回3冊まで借りることができます。

初めて利用する際には、住所や在留期間（外国人の方）を証明するもの（運転



Please feel free to contact the International Exchange Lounge at 082-247-9715.

E-mail: golounge@pcf.city.hiroshima.jp

February 2017

めんきょしょう がくせいしょう
免許証 ・ 学生証 ・ パスポート ・ 在留カードなど)を提示して下さい。

Japanese Language Classes in Hiroshima City

These are Japanese language classes held at community halls, and other public facilities in Hiroshima City. The lessons are free for the most part; however, some classes may charge a fee for materials. Some classes require you to observe the lesson in advance. There is also the possibility that the information mentioned below has changed. Please inquire at the relevant class for further information before you attend the lesson.

As of December 2016

■ Naka Ward

#1 Hiroshima Japanese Language Class

PLACE: ① Hiroshima Kokusai Kaigi-jo, 3F Kenshu-shitsu (1-5 Nakajima-cho, Naka-ku)
② Hiroshima Kokusai Center (Hiroshima International Center)
(Crystal Plaza 6F, 8-18 Naka-machi, Naka-ku)

DATE & TIME:

- ① Every Wednesday, 6:30pm – 8:00pm
- ① ② Every Saturday, 10:00am – noon

TUITION: Free

ENROLLMENT: Enroll any time you please

INQUIRIES: Hiroshima Japanese Language Class
Tel. 090-1339-1454
Email: Hiroshima.nihongo@gmail.com

ACCESS:

Hiroshima Kokusai Kaigi-jo

- ⇒ Located in Peace Memorial Park
- ① Take bus No.24 bound for *Yoshijima Eigyo* (吉島営業所) and get off at *Heiwa Kinen Koen* (平和記念公園). It is a 3 min. walk from there.
- ② It is a 5 min. walk from the *Gembaku Dome-mae* (原爆ドーム前) Streetcar Stop.

Hiroshima Kokusai Center

(Hiroshima International Center)

- ⇒ It is a 5 min. walk from the *Fukuro-machi* (袋町) Streetcar Stop. Near the ANA Crowne Plaza Hotel Hiroshima

URL: <http://hiroshimakyojishitsu.wix.com/nihongo>

Hiroshima Nihongo Kyoshitsu

Facebook: ひろしま 日本語 教室 [Hiroshima Japanese Class](https://www.facebook.com/HiroshimaJapaneseClass)

#2 Japanese Language Class Peace

PLACE: Hiroshima YMCA (7-11 Hatchobori, Naka-ku)

DATE & TIME: Every Saturday, 1:00pm – 3:00pm

TUITION: Free

ENROLLMENT: Enroll any time you please

INQUIRIES: Japanese Language Class Peace
Email: ninjapanese.peace@gmail.com

ACCESS: Hiroshima YMCA

- ① From Hiroshima Train Station (south exit), take any streetcar other than number 5 to *Tatemachi* (立町) stop. It is a 3 minute walk from there.
- ② From Hiroshima Bus Center, it is a 5 minute walk.

#3 Nihongo Gakushu Kai

PLACE: Hiroshima Kokusai Kaigi-jo, 3F Kenshu-shitsu (1-5 Nakajima-cho, Naka-ku)

DATE & TIME: Every Thursday, 10:00 am – noon

TUITION: 100yen/month

ENROLLMENT: Enroll any time you please

INQUIRIES: Nihongo Gakushu Kai Tel. 082-923-1580

ACCESS:

- ① Take bus No.24 bound for *Yoshijima Eigyo* (吉島営業所) and get off at *Heiwa Kinen Koen* (平和記念公園). It is a 3 min. walk from there.
- ② It is a 5 min. walk from the *Gembaku Dome-mae* (原爆ドーム前) Streetcar Stop.

#4 Japanese Language Class Kogusa

PLACE: Takeya Komin-kan

(3-15 Takara-machi, Naka-ku)

DATE & TIME: Every Wednesday, 1:00 pm – 4:00 pm

TUITION: 100yen/month

ENROLLMENT: Enroll any time you please

INQUIRIES: Takeya Komin-kan Tel. 082-241-8003

ACCESS: Take a bus bound for *Daigaku Byoin* (大学病院) and get off at *Takeya-cho* (竹屋町). It is a 5 min. walk from there, near the Fuji Grand supermarket.

#5 Japanese Study Class for Returnees from China Chugoku Kikokusha no Kai

PLACE: Chuo Komin-kan

(24-36 Nishi-hakushima-cho, Naka-ku)

DATE & TIME: Every Monday, Wednesday and Saturday, 10:00 am – noon

INQUIRIES: Chuo Komin-kan Tel. 082-221-5943

ACCESS: Located near Moto-machi High School

- ① Take a bus bound for *Yokogawa* (横川) or *Daigaku Byoin* (大学病院) and get off at *Nishi-hakushima* (西白島). It is a 5 min. walk from there.
- ② It is a 5 min. walk from the *Johoku* (城北) Station (*Astramline*).



#6 HarukazeJapanese Volunteer Group

PLACE: International Exchange Lounge (Hiroshima Kokusai Kaigi-jo, 1F) or schools that students are attending

DATE & TIME: Every Saturday, 10:00 am – noon at the International Exchange Lounge

TUITION: Free

INQUIRIES: Tel. 082-277-8330 (Sato)
Email: harukaze@feel.ocn.ne.jp

ACCESS: International Exchange Lounge
① Take bus No.24 bound for *Yoshijima Eigyosho* (吉島営業所) and get off at *Heiwa Kinen Koen* (平和記念公園). It is a 3 min. walk from there.
② It is a 5 min. walk from the *Gembaku Dome-mae* (原爆ドーム前) Streetcar Stop.

■ **Minami Ward**#7 WednesdayJapanese Language Club

PLACE: *Ryugakusei Kaikan*
Hiroshima City International House
(1-1 Nishi-Kojin-machi, Minami-ku)
DATE & TIME: Every Wednesday, 10:00 am - noon
TUITION: Free
ENROLLMENT: Enroll any time you please
INQUIRIES: *Ryugakusei Kaikan* Tel. 082-568-5931
ACCESS: It is a 5 min. walk towards east from JR Hiroshima (広島) Station, next to the Ark Hotel.

#8 Minna-no-Nihongo Class

PLACE: *Ryugaku-sei Kaikan*
Hiroshima City International House
(1-1 Nishi-Kojin-machi, Minami-ku)
DATE & TIME: Every Saturday, 1:30 pm – 3:30 pm
TUITION: Free
ENROLLMENT: Enroll any time you please
INQUIRIES: *Ryugaku-sei Kaikan* Tel. 082-568-5931
ACCESS: It is a 5 min. walk towards east from JR Hiroshima (広島) Station, next to the Ark Hotel.

#9 Fureai Japanese Language Class

PLACE: *Aosaki Komin-kan*
(1-12-7 Aosaki, Minami-ku)
DATE & TIME: Every Saturday, 7:00 pm – 9:00 pm
TUITION: Free
ENROLLMENT: Enroll any time you please
INQUIRIES: *Aosaki Komin-kan* Tel. 082-281-3802
ACCESS: It is a 5 min. walk from the JR *Mukainada* (向洋) Station (JR Sanyo or JR Kure Line).

■ **Higashi Ward**#10 Ushita Japanese Language Class

PLACE: *Ushita Komin-kan*
(1-8-3 Ushita-shin-machi, Higashi-ku)
DATE & TIME: Every Wednesday, 1:30 pm – 3:30 pm
Classes will be closed during summer holiday season (late July to the end of August), New Year's holiday season and on closed days of *Ushita Komin-kan*.
TUITION: Free
ENROLLMENT: Enroll any time you please
INQUIRIES: *Ushita Komin-kan* Tel. 082-227-0706
ACCESS: Get off at *Ushita* (牛田) Station (Astramline). It is a 5 min. walk from there. It is located next to the Higashi Ward Sports Center.

■ **Nishi Ward**#11 Minami-kanon Japanese Language Volunteer Group

PLACE: *Minami-kanon Komin-kan*
(2-16-46 Kanon-shin-machi, Nishi-ku)
DATE & TIME: Every Saturday, 6:00 pm – 9:00 pm
TUITION: Free
ENROLLMENT: Enroll any time you please
INQUIRIES: *Minami-kanon Komin-kan*
Tel. 082-293-1220
ACCESS: Take the No. 3 bus bound for Hiroshima Heliport or Marina Hop and get off at *Kanon-shin-machi 3 cho-me* (観音新町 3 丁目) Stop. It is a 5 min. walk from there.

#12 Japanese Language Class Momiji

PLACE: *Furuta Komin-kan*
(19-15 Furue-nishi-machi, Nishi-ku)
DATE & TIME: Every Friday, 10:00 am – noon
TUITION: 100yen/month
ENROLLMENT: Enroll any time you please
INQUIRIES: *Furuta Komin-kan* Tel. 082-272-9001
ACCESS: It is a 5 min. walk from the *Furue* (古江) Streetcar Stop (Miyajima Line).

#13 IVC: Kokusai Volunteer Club ~ Nihongo

PLACE: *Kusatsu Komin-kan*
(2-20-7 Kusatsu-higashi, Nishi-ku)
DATE & TIME: Every Wednesday, 10:00 am – 12:30 pm
Every Saturday, 1:30 pm – 3:30 pm
TUITION: Free
ENROLLMENT: Enroll any time you please
INQUIRIES: *Kusatsu Komin-kan* Tel. 082-271-2576
ACCESS: It is a 2 min. walk from the *Kusatsu* (草津) Streetcar Stop (Hiroden Miyajima Line).

■ Asaminami Ward

#14 Gion Japanese Language Class

PLACE: Gion Komin-kan

(1-13-26 Nishihara, Asaminami-ku)

DATE & TIME: Every Friday, 10:30 am – 1:00 pm
Lesson schedule may change during school holiday seasons.

TUITION: Free

ENROLLMENT: Enroll any time you please

INQUIRIES: Gion Komin-kan Tel. 082-874-5181

ACCESS:

- ① It is a 5 min. walk from the JR Shimo-gion (下祇園) Station (JR Kabe Line).
- ② It is a 15 min. walk from the Gion Shin-bashi-kita (祇園新橋北) Station (Astramline).
- ③ It is a 5 min. walk from the NHK Housousyo-mae bus stop.

◆ Child-care service is available during the class. (Prior reservation is required.)

#15 Yasu-higashi

Japanese Language Class

PLACE: Yasu-higashi Komin-kan

(2-16-42 Yasu-higashi, Asaminami-ku)

DATE & TIME: Every Friday, 6:00 pm – 7:30 pm
Because classes are held on a semester system, there are times when classes will not be held.

TUITION: Free

ENROLLMENT: Enroll whenever you please (during the term only)
Inquire at the Yasu-higashi Komin-kan for more information including the term schedule.

INQUIRIES: Yasu-higashi Komin-kan
Tel. 082-878-7683

ACCESS: It is a 5 min. walk from Yasu-higashi (安東) Station (Astramline).

#16 Sato Japanese Language Class

PLACE: Sato Komin-kan (6-29-25 Midorii, Asaminami-ku)

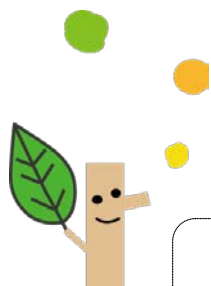
DATE & TIME: Every Wednesday, 9:30 am – 12:30 pm

TUITION: Free

ENROLLMENT: Enroll any time you please

INQUIRIES: Sato Komin-kan Tel. 082-877-5200

ACCESS: It is a 3 min. walk from the Shichiken-jaya (七軒茶屋) Station (JR Kabe Line).



#17 Numata Japanese Language Class

PLACE: Numata Komin-kan

(5697 Tomo, Numata-cho, Asaminami-ku)

DATE & TIME: Every Saturday, 1:00 pm – 4:00 pm

TUITION: Free

ENROLLMENT: Enroll any time you please
A lesson observation is required in advance. Inquire at the Numata Komin-kan.

INQUIRIES: Numata Komin-kan Tel. 082-848-0242

ACCESS:

- ① It is a 5 min. walk from the Obara (大原) Station (Astramline).
- ② At JR Hiroshima Station (south exit), take a bus bound for Ichiritsu Daigaku (市立大学) via Kokudo 54 and get off at Mitsubishi-danchi-iriguchi (三菱団地入口) (a 1 hour bus ride). It is a 8 min. walk from there.
- ③ At the Hiroshima Bus Center (Hiroshima Sogo Department Store, 3F), take a bus bound for Kusunoki-dai (くすの木台) via Kosoku 4-go-sen and get off at Obara Eki (大原駅) (a 30 min. bus ride). It is a 5 min. walk from there.

■ Asakita Ward

#18 Magame Japanese Language Class

PLACE: Magame Komin-kan

(1-3-27 Magame, Asakita-ku)

DATE & TIME: Every Sunday, 10:00 am – noon
Classes will be closed during New Year's holiday season.

TUITION: Free

ENROLLMENT: Enroll any time you please

INQUIRIES: Magame Komin-kan Tel. 082-842-8223

ACCESS: Take a bus bound for Obayashi Shako (大林車庫) via Koyo A Danchi (高陽A団地) and get off at Terasako Koen (寺迫公園). It is a 1 min. walk from there.

#19 Kameyama

Japanese Language Class Amigo

PLACE: Kameyama Komin-kan

(3-16-16 Kameyama-minami, Asakita-ku)

DATE & TIME: Every Sunday, 10:00 am – 12:30 pm

TUITION: Free

ENROLLMENT: Enroll any time you please

INQUIRIES: Kameyama Komin-kan

Tel. 082-815-1830

ACCESS: Take a bus bound for Katsuki (勝木) via Nijiyama Danchi (虹山団地) and get off at Nijiyama Danchi-shita (虹山団地下). It is a 5 min. walk from there.

▣ Aki Ward

#20 **Nihongo Club**

PLACE: Funakoshi Komin-kan

(5-22-23 Funakoshi, Aki-ku)

DATE & TIME: Every Saturday, 10:00 am – noon

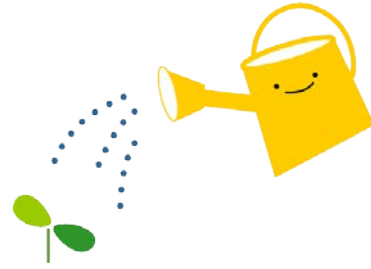
TUITION: Free

ENROLLMENT: Enroll any time you please

INQUIRIES: Funakoshi Komin-kan

Tel. 082-823-4261

ACCESS: It is a 7 min. walk from the JR Kaita-ichi (海田市) Station (JR Sanyo Line).



INQUIRY: Hiroshima Peace Culture Foundation

International Exchange Lounge

1-5 Nakajima-cho, Naka-ku, Hiroshima
730-0811

E-mail: golounge@pcf.city.hiroshima.jp

Tel. 082-247-9715 Fax. 082-242-7452

✦ Visit our website for information online. ✦

URL: <http://www.pcf.city.hiroshima.jp/ircd/Japanese/index.html>



HIRO CLUB NEWS is published monthly and provides essential and entertaining information about life in Hiroshima City. It is available in print at the International Exchange Lounge, and online at our website:

<http://www.pcf.city.hiroshima.jp/ircd/english/hiroclubnews/index.html>

Selected information is also available in other languages including Chinese, Portuguese, Spanish and Korean.

HIRO CLUB NEWS は広島你的生活情報やイベント等の情報を掲載している英語の月刊情報誌です。国際交流ラウンジにて配布しています。当課ホームページにも掲載しています。英語版の情報の一部を抜粋した中国語・ポルトガル語・スペイン語・ハングル版も作成しています。

Edited and published by the Hiroshima Peace Culture Foundation

International Affairs Department, International Relations and Cooperation Division

Tel: (082) 242-8879, Fax: (082) 242-7452, E-mail: internat@pcf.city.hiroshima.jp

International Exchange Lounge

Tel: (082) 247-9715, E-mail: golounge@pcf.city.hiroshima.jp

Website: <http://www.pcf.city.hiroshima.jp/ircd/english/index.html>

編集・発行 公益財団法人広島平和文化センター国際部国際交流・協力課

〒730-0811 広島市中区中島町1番5号