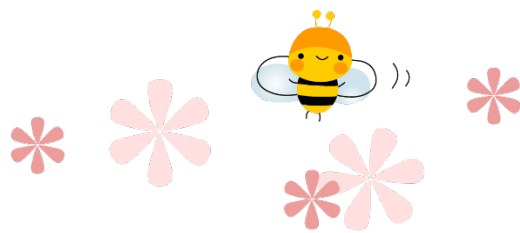


Seasonal Event Information

April 2017

★ Event schedules are subject to change.
Please contact event organizers before you go.



Events Held in Hiroshima City

Every Wednesday between April 5 and December 27, 2017

☺ Apr. 5, 12, 19 & 26; May 10, 17, 24 & 31

Hiroshima Kagura ひろしまけんみんぶんか 広島県民文化センター「広島神楽」定期公演 ひろしまかぐら ていきこうえん

TIME: 7:00pm – 8:45pm (The venue will open at 6:00pm.)

PLACE: Hiroshima Kenmin Bunka Center, Ote-machi, Naka-ku (located near Hondori Shopping Street)

ACCESS: From Kamiya-cho-nishi or Hondori Streetcar Stops, walking time to destination is 3 minutes.

TICKETS: ¥1,000 ✧ All non-reserved seats

✧ Tickets will be sold from 5:00pm on the performance date at the center.

There are no advance tickets.

INQUIRIES: Hiroshima Kenmin Bunka Center 082-245-2311

Sun., April 2

Kan-ou (Cherry Blossoms-viewing) Tea Ceremony かんおうちやかい 観桜茶会

TIME: 10:00am – 3:00pm

PLACE: Shukkeien Garden

ACCESS: Take a streetcar on the Hiroden Hakushima Line and get off at Shukkeien-mae. Walking time to destination: 5 minutes

ADMISSION FEE: Adults - ¥260, University & High school students - ¥150, Junior high & Elementary school students - ¥100 ✧ Fee for the tea ceremony is also required.

INQUIRIES: Shukkeien Garden 082-221-3620

Sun., April 2 & 16

Hiroshima Minato Marché ひろしまみなとマルシェ

TIME: 9:00am – 3:00pm

PLACE: Open Space between East and West Terminal of Hiroshima Port, Minami-ku

ACCESS: Take the No. 1, 3 or 5 streetcar bound for Hiroden Ujina or Hiroshima Port and get off at the last stop, Hiroshima Port.

INQUIRIES: Hiroshima Minato Marché Office 082-255-6646

☑ You can buy and taste locally-grown fresh vegetables and other food products at the marché.

Fri., April 7 – Sun., April 16

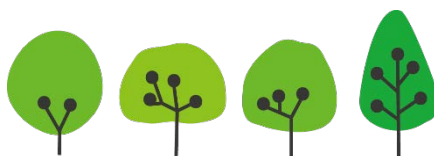
Spring Green Fair 2017 はる のグリーンフェア 2017

TIME: 10:00am – 5:00pm

PLACE: Chuo Koen (Park), Moto-machi, Naka-ku

ACCESS: From the Genbaku Dome-mae Streetcar Stop, walking time to destination is 10 minutes.

INQUIRIES: Ryokusei Ka, Hiroshima City Hall 082-504-2396



Please feel free to contact the International Exchange Lounge at 082-247-9715.

E-mail: golounge@pcf.city.hiroshima.jp

April 2017

Sat., April 8 & Sun., April 9**Spring Gourmet Festival 2017** はる 春のまるごとグルメフェスタ 2017**TIME:** 10:00am – 5:00pm**PLACE:** The Open Space of the Former Municipal Baseball Stadium, Motomachi, Naka-ku**ACCESS:** Get off at the Kamiya-cho-nishi or the Genbaku Dome-mae Streetcar Stops.**ADMISSION FEE:** Free**INQUIRIES:** Chugoku Shimbun 082-236-2211 (Mon. – Fri., 9:30am – 5:30pm)☑ Various food stalls will participate in this event. Stage events such as *kagura* performance (Apr. 8) will also be held.**Sun., April 9****Fiesta de España** ひろしまスペインまつり**TIME:** 11:00am – 6:00pm**PLACE:** Alice Garden (an open space near Hiroshima PARCO), Shintenchi, Naka-ku**ACCESS:** From Hatchobori Streetcar Stop, walking time to destination is 5 minutes.**FOOD TICKETS:** ¥1,000 ✧ Free admission**CONTENTS:** Spanish food kiosks, selling of Spanish miscellaneous goods and live performances, etc.**INQUIRIES:** Hiroshima-Spain Association 082-241-6703 E-mail: hiroshima_spain@yahoo.co.jp**Wed., April 12 – Tue., April 18****2017 Cherry Blossom Viewing in Hiroshima** はな 花のまわりみち**TIME:** 10:00am – 8:00pm**PLACE:** Zohei Kyoku (Japan Mint), Hiroshima Branch, Saeki-ku**ACCESS:** Get off at JR Itsukaichi Station (JR Sanyo Line) or the Itsukaichi Streetcar Stop. Extra buses to the venue will run from the north exit of the JR station during the event period.**ADMISSION FEE:** Free**INQUIRIES:** Hello Dial 050-5548-8686 (8:00am – 9:00pm)
Japan Mint, Hiroshima Branch 082-922-1597

☑ 60 varieties and 218 cherry trees will be in full bloom.

Sat., April 15 & Sun., April 16**Microbrewery Beer Festa in Hiroshima 2017** じ 地ビールフェスタ in ひろしま 2017**TIME:** ◆ Apr. 15: noon – 8:00pm ◆ Apr. 16: 11:00am – 5:00pm**PLACE:** The Open Space of the Former Municipal Baseball Stadium, Motomachi, Naka-ku**ACCESS:** Get off at Kamiya-cho-nishi or Genbaku Dome-mae Streetcar Stop.**TICKETS:** (Food is not included in the ticket prices below)Advance:

- ① For ten glasses of beer (250ml) with a commemorative glass - ¥4,000
- ② For five glasses of beer (250ml) with a commemorative glass - ¥2,800
- ③ For five glasses of beer (250ml) with a plastic cup - ¥2,400
- ④ Tickets for tasting (20 glasses of beer, 80ml) with a commemorative glass - ¥3,200

✧ The number of tickets for ①, ② & ④ are limited.

✧ Advance tickets are sold at convenience stores (Lawson, SevenEleven), JTB Shop, etc. in Hiroshima City.

At the venue:

- ① For one glass of beer - ¥500
- ② Tickets for tasting (20 glasses of beer, 80ml) with a plastic cup - ¥3,300
- ③ Glass (250ml) - ¥500
- ④ Plastic cup (250ml) - ¥50

♻ **Please reuse your glass or a plastic cup to help reduce garbage.****INQUIRIES:** Golden Garden 082-248-2657 (4:00pm – midnight except on Sun. & national holidays)

☑ Please come to the venue by public transportation and refrain from driving if you drink any. Underage (19 years old and younger) drinking is also prohibited.

Please feel free to contact the International Exchange Lounge at 082-247-9715.

E-mail: golounge@pcf.city.hiroshima.jp

April 2017



Sat., April 15 & Sun., April 16**Hiroshima Boat Show: Marine Grand Festa**ひろしま
広島 ボートショー マリン・グラン・フェスタ**TIME:** 10:00am – 5:00pm**PLACE:** Hiroshima Kanon Marina, Kanon-shin-machi, Nishi-ku**ACCESS:** Take the No. 3 or the No. 8 bus bound for Marina Hop and get off at the last stop.**INQUIRIES:** *Chugoku Unyu Kyoku, Senpaku Sangyo Ka* 082-228-3691

☑ This is the biggest marine event in Hiroshima.

**Fri., April 28 – Sun., May 7****World Beer and Gourmet Stadium 2017** せかい世界のビールとグルメスタジアム 2017**TIME:** Weekdays: 3:00pm – 9:00pm / Sat., Sun. & national holidays: 11:00am – 9:00pm**PLACE:** The Open Space of Former Municipal Baseball Stadium, Moto-machi, Naka-ku**ACCESS:** Get off at Kamiya-cho-nishi or Genbaku Dome-mae Streetcar Stops.**ADMISSION FEE:** Free, except for entry to the “kids’ park”.**INQUIRIES:** Executive Committee (inside the Hiroshima TV building)

082-249-1218 (Mon. – Fri., 10:00am – 6:00pm)

- ☑ You can enjoy beer from all over the world, food, music, etc. every day during the event period.
- ☑ Remember, no driving if you drink alcohol! Pets (except service dogs) are not allowed to enter the venue. Event may be canceled if there is bad weather.

Sat., April 29 & Sun., April 30**Hiroshima Yoga Peace '17** ひろしまヨガピース '17**SCHEDULE:** Please check the website below for the schedule.

Apr. 29: 10:00am – 7:30pm / Apr. 30: 8:30am – 4:00pm

PLACE: ◆ *Hiroshima Kokusai Kaigijo* (International Conference Center Hiroshima; located in Peace Memorial Park), Nakajima-cho, Naka-ku◆ *Hiroshima Orizuru Tower* (located near A-bomb Dome), Otemachi, Naka-ku**ACCESS:** Get off at Genbaku Dome-mae Streetcar Stop.**FEE:** ¥3,500 for 1 class; ¥9,500 for 3 classes; ¥14,000 for 5 classes; Yoga mat rental: ¥500 / day**TO APPLY:** Applications will be accepted through the website (http://www.hiroshima-yogapeace.com/mail_v26/resereve2017.htm) until Sun., April 16 (Japanese language only).**INQUIRIES:** Hiroshima Yoga Peace Executive Committee 080-5629-1892E-mail: yoga@hiroshima-yogapeace.com HP: <http://www.hiroshima-yogapeace.com>

☑ Famous yoga teachers from Japan and abroad will come and teach you yoga from various schools.

Sun., April 30**Cha-tsumi (Tea Leaf-Picking) Performance & Tea Ceremony** ちやつみ茶摘まつり ちやかい(茶会)**TIME:** 10:00am – 3:00pm**PLACE:** Shukkeien Garden**ACCESS:** Take a streetcar on the Hiroden Hakushima Line and get off at Shukkeien-mae.

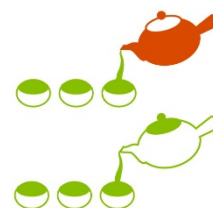
Walking time to destination: 5 minutes

ADMISSION FEE: Adults - ¥260, University & High school students - ¥150,

Junior high school & Elementary school students - ¥100

INQUIRIES: Shukkeien Garden 082-221-3620👏 **Tea Leaf-picking Demonstration:** 4 times (10:00am, 11:00am, 1:00pm & 2:00pm)

Saotome, girls dressed in a traditional costume, will demonstrate an old-fashioned way of tea leaf-picking. Freshly-picked tea will be served for free.

👏 **Tea Ceremony:** 10:00am – 3:00pm / ¥600 is required for *matcha*, green powdered tea.

Please feel free to contact the International Exchange Lounge at 082-247-9715.

E-mail: golounge@pcf.city.hiroshima.jp

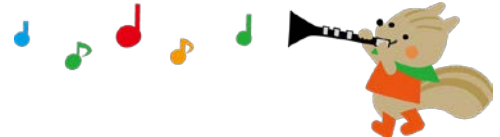
April 2017

Wed., May 3 – Fri., May 5**The 41st Hiroshima Flower Festival** だい かい 第41回 ひろしまフラワーフェスティバル**TIME:** From 11:00am onward**PLACE:** Peace Memorial Park, Heiwa-Odori (Peace Boulevard), etc.**ACCESS:** Get off at the Genbaku Dome-mae Streetcar Stop, then walk for about 5 min.**EVENTS:** May 3: Opening ceremony, parade, etc.

May 4: Stage performances

May 5: *Kinsai Yosakoi* dancing parade, closing ceremony, etc.

May 3 – 5: Various stage performances, sales kiosks, and other events

INQUIRIES: Hiroshima Flower Festival Executive Committee
082-294-4622 HP: <http://www.hiroshima-ff.com>**Mon., May 15****Hiroshima Rosoku Takiginoh** ひろしまろうそくたきぎのう 広島蠟燭新能**TIME:** From 5:45pm onward ✧ The venue will open at 5:00pm.**PLACE:** Hiroshima Gokoku Jinja (Shrine), *Noh* stage, Naka-ku**ACCESS:** From the Kamiya-cho-nishi or the Genbaku Dome-mae Streetcar Stops, walking time to destination is 10 minutes.**TICKET:** SS - ¥13,000 S - ¥10,000 A - ¥8,000 B - ¥5,000✧ Advance tickets are sold at Hiroshima Gokoku Shrine, EDION Hiroshima, *Hon-kan* (Kamiya-cho), *Fukuya* Department Store (Hiroshima Station) and Chugoku Shimbun.**INQUIRIES:** Hiroshima Gokoku Jinja 082-221-5590 (9:00am – 5:00pm)☐ *Noh* is a traditional Japanese performing art.☐ This performance will be held at JMS Aster Plaza (Kako-machi, Naka-ku) if it rains on the 15th. Please check the shrine's website (<http://www.h-gokoku.or.jp>) or call the shrine (082-221-5590) about the venue.**Events Held on Miyajima****Sat., March 18 – Mon., April 3****The 17th Miyajima Hina Doll Presentation** だい かい ひな 第17回 みやじま雛めぐり**PLACE:** Various places in Miyajima-choResidences or shops displaying a pink flag will allow you to view their *Hina* dolls.**ACCESS:** Get off at JR Miyajima-guchi Station (JR Sanyo Line) or Miyajima Streetcar Stop (Hiroden Streetcar Miyajima Line), then take a ferry to Miyajima.**ADMISSION FEE:** Free**INQUIRIES:** *Miyajima Kanko Kyokai* (Tourist Association) 0829-44-2011☐ Antique *Hina* dolls which were passed down from established families in Miyajima will be on display.**Sat., April 8****Hana-matsuri Buddhist Memorial Service** はなまつ ほうよう 花祭り法要**TIME:** From 11:00am onward**PLACE:** Daishoin Temple, Miyajima**ACCESS:** Get off at JR Miyajima-guchi Station (JR Sanyo Line) or the Miyajima Streetcar Stop (Hiroden Streetcar Miyajima Line), then take a ferry to Miyajima.**INQUIRIES:** Daishoin Temple 0829-44-0111☐ This is a Buddhist memorial service celebrating Buddha's birthday. *Ama-cha* (sweet tea) will be served.

Please feel free to contact the International Exchange Lounge at 082-247-9715.

E-mail: golounge@pcf.city.hiroshima.jp

April 2017

Sun., April 9**Kodo** こうどうこうりゅう 香道 香流 こうかい 香の会**TIME:** From 10:00am onward**PLACE:** Daishoin Temple, Miyajima**ACCESS:** Get off at JR Miyajima-guchi Station (JR Sanyo Line) or the Miyajima Streetcar Stop (Hiroden Streetcar Miyajima Line), then take a ferry to Miyajima.**INQUIRIES:** Daishoin Temple 0829-44-0111☐ *Kodo* is the traditional Japanese art of appreciating the scents of aromatic woods.**Sat., April 15****Walking over Coals Ceremony** だいしょういん ひわた しきはる たいさい 大聖院 火渡り式 (春の大祭)**TIME:** From 11:00am onward**PLACE:** Daishoin Temple, Miyajima**ACCESS:** Get off at JR Miyajima-guchi Station (JR Sanyo Line) or the Miyajima Streetcar Stop (Hiroden Streetcar Miyajima Line), then take a ferry to Miyajima.**INQUIRIES:** Daishoin Temple 0829-44-0111

☐ A spring festival where one walks over hot coals to pray for protection from illness and disaster. You can try it too!

Sat., April 15**Toka-sai (Peach Blossom Festival)** とうかさい 桃花祭**TIME:** From 5:00pm onward**PLACE:** Itsukushima Shrine, Miyajima**ACCESS:** Get off at JR Miyajima-guchi Station (JR Sanyo Line) or the Miyajima Streetcar Stop (Hiroden Streetcar Miyajima Line), then take a ferry to Miyajima.**FEE:** Admission fee for Itsukushima Shrine

(Adults & University students - ¥300	High school students - ¥200)
	Junior high & Elementary school students - ¥100	

INQUIRIES: Itsukushima Shrine 0829-44-2020☐ *Bugaku* (traditional court dance and music) will be played after the ritual.**Sun., April 16 – Tue., April 18****Toka-sai, Noh Ceremony** とうかさいごしんのう 桃花祭 御神能**TIME:** 9:00am – 4:00pm**PLACE:** Itsukushima Shrine, Miyajima**ACCESS:** Get off at JR Miyajima-guchi Station (JR Sanyo Line) or the Miyajima Streetcar Stop (Hiroden Streetcar Miyajima Line), then take a ferry to Miyajima.**FEE:** Admission fee for Itsukushima Shrine

(Adults & University students - ¥300	High school students - ¥200)
	Junior high & Elementary school students - ¥100	

INQUIRIES: Itsukushima Shrine 0829-44-2020☐ Various *Noh* performances will be held on Itsukushima Shrine's floating *Noh* stage in the sea from the morning to the evening over a period of 3 days.**Fri., April 28 – Sun., May 7****Daishoin Temple Satsuki (Azalea) Festival** だいしょういん まつ 大聖院 さつき 祭り**TIME:** 8:00am – 5:00pm**PLACE:** Daishoin Temple, Miyajima**ACCESS:** Get off at JR Miyajima-guchi Station (JR Sanyo Line) or the Miyajima Streetcar Stop (Hiroden

Please feel free to contact the International Exchange Lounge at 082-247-9715.

E-mail: golounge@pcf.city.hiroshima.jp

April 2017

Streetcar Miyajima Line), then take a ferry to Miyajima.

ADMISSION FEE: Free

INQUIRIES: Daishoin Temple 0829-44-0111

☑ Exhibition of temple treasures, calligraphy by virtuous monks and flower arrangements.

Wed., May 3

Annual Celebration at Awashima Shrine

あwashimaじんじやれいさい
栗島神社例祭

TIME: From 11:00am onward

PLACE: Awashima Shrine, Miyajima

ACCESS: Get off at JR Miyajima-guchi Station (JR Sanyo Line) or the Miyajima Streetcar Stop (Hiroden Streetcar Miyajima Line), then take a ferry to Miyajima.

INQUIRIES: Itsukushima Shrine 0829-44-2020

☑ This is the annual celebration of “Awashima-san”, also known as the guardian deity of women.

Events Held Outside of Hiroshima City

Sat., Sun. & national holidays

Sake Brewery Opening

ようこそ じょうかまちさいじょう
醸華町西条

PLACE: Sake Breweries, Higashihiroshima City

ACCESS: Get off at JR Saijo Station (JR Sanyo Line).

FEE: Free

INQUIRIES: Saijo Sakagura-dori Kanko Annai-jo

Tel. & Fax 082-421-2511 (10:00am – 4:00pm, closed on Mondays)

☑ Some sake breweries open to the public on Sat., Sun. & national holidays. Signboards with the words “ようこそ じょうかまちさいじょう” (“Yokoso Jokamachi Saijo”) will be placed in front of the opened breweries.

Sat., March 25 – Thurs., April 6

Sakura (cherry blossom) Festival at Kosanji Temple

こうさんじさくら
耕三寺桜まつり

PLACE: Kosanji Temple & Kosanji Temple Museum, Onomichi City

ACCESS: ① Take a “Shimanami Liner” express bus from Hiroshima Bus Center (Hiroshima Sogo Department Store, 3F) and get off at Setoda Bus Stop (a 1 hour and 40 min. bus ride). Then take another bus from there and get off at Kosanji-mae.

✦ Please note that reservations are required to take a “Shimanami Liner”. Call the Hiroko Reservation Center (082-238-3344) for more information.

② Get on a ferry from Mihara Port or Onomichi Port and get off at Setoda Port.

ADMISSION FEE FOR THE TEMPLE & THE MUSEUM:

Adults-¥1,400 University students-¥1,000 High school students-¥800

Junior high school students and under-Free

INQUIRIES: Kosanji Temple & Kosanji Temple Museum 0845-27-0800

☑ 200 cherry blossom trees will be in full bloom during this period. Various events such as offering up cherry blossom-flavored tea and judging entries in a photo contest will be held.

Sat., April 1

Sakura (cherry blossom) Tea Ceremony

さくら ちやかい
茶会

TIME: 11:00am – 3:30pm

PLACE: In front of JR Onomichi Station, Onomichi City

ACCESS: Get off at JR Onomichi Station (JR Sanyo Line).



Please feel free to contact the International Exchange Lounge at 082-247-9715.

E-mail: golounge@pcf.city.hiroshima.jp

April 2017

TICKETS: Advance tickets-¥2,000 At the venue-¥2,500

◇ Tickets include the fee for a cup of green tea, a lunch box, etc.

INQUIRIES: *Onomichi Shoko Kaigisho, Josei Kai* 0848-22-2165

Sun., April 2

Sakura (cherry blossom) Festival in Hatsukaichi はつかいち ^{さくら} 桜まつり

TIME: 9:30am – 4:30pm

PLACE: Around the Northern Area of Mokuzai-ko (port), Shohoku Ground, Hatsukaichi City

ACCESS: From JR Hatsukaichi Station (JR Sanyo Line), walking time to destination is 15 minutes.

INQUIRIES: *Hatsukaichi Kanko Kyokai* (Tourist Association) 0829-31-5656

☑ Parade, stage performances, kiosks, etc.

Sun., April 2

The 32nd Sakura (Cherry Blossom) Festival in Miyoshi ^{だい かいみよし} 第32回三次さくら ^{まつり} 祭

TIME: 10:00am – 4:00pm

☼ Night time illumination ☼

PERIOD & TIME: Sat., March 25 – Sun., April 9 6:00pm – 10:00pm

PLACE: *Ozekiyama Koen* (Park) & *Miyoshi Hondori* Shopping Street, Miyoshi City

ACCESS: Take a bus from JR Miyoshi Station (JR Geibi Line) and get off at Ozekiyama Koen or Miyoshi Chugakko. Walking time to destination: 5 minutes

INQUIRIES: *Miyoshi City Kanko Kyokai* (Tourist Association) 0824-63-9268

Sun., April 2

Myoga Kagura Performance ^{みょうががくぐらほうのう} 名荷神楽奉納

TIME: 1:00pm – 3:30pm

PLACE: Myoga, Setoda-cho, Onomichi City

ACCESS: From the Ikuchijima-kita I.C. on the Shimanamikaido Expressway, driving time to destination is 5 minutes.

INQUIRIES: *Setoda-cho Kanko Annaijo* (Tourist Information) 0845-27-0051

☑ This is designated as one of Hiroshima Prefecture's intangible folklore cultural assets.

Sun., April 9

Festival at Seishinji Temple ^{せいしんじ} 棲真寺まつり

TIME: 10:00am – 3:00pm

PLACE: Seishinji Temple, Mihara City

ACCESS: From JR Kouchi or JR Hongo Station (JR Sanyo Line), driving time to destination is 30 minutes.

INQUIRIES: *Ukishiro Lobby Kanko Annaijo* (Tourist Information) 0848-67-5877

☑ Zen priests (*komuso*) parade, ritual, kiosks, etc.

Sun., April 9

Takehara Sakura (Cherry Blossom) Festival ^{さくら} たけはら桜まつり in バンブー

TIME: 10:00am – 3:00pm

PLACE: *Bamboo Joy Highland* (Park), Takehara City

ACCESS: From JR Takehara Station (JR Kure Line), driving time to destination is 10 minutes.

INQUIRIES: *Takehara City Kanko Kyokai* (Tourist Association) 0846-22-4331

☑ Stage performances, kiosks, etc.



Please feel free to contact the International Exchange Lounge at 082-247-9715.

E-mail: golounge@pcf.city.hiroshima.jp

April 2017

Mon., April 10**Sakagura Walking Tour (Free)** さかぐら 酒蔵のまち てくてくガイド**TIME:** Tour will start on an as-needed basis between 10:00am and 11:00am.**MEETING PLACE:** Saijo Sakagura-dori Kanko Annai-jo (Tourist Information Center), Higashihiroshima City**ACCESS:** Get off at JR Saijo Station (JR Sanyo Line).**PARTICIPATION FEE:** Free**INQUIRIES:** Saijo Sakagura-dori Kanko Annai-jo Tel. & Fax 082-421-2511

- ☐ A volunteer guide will show you Sakagura-dori (Sake Brewery Street). During the tour you will be able to taste sake and the purified water that is used to make it.
- ☐ A regular guided tour (fee-based) is also held every day except on the 10th. Advance reservations are required by a week before the day you wish to. An English speaking guide is available. Please contact the Saijo Sakagura-dori Tourist Information Center in advance.

Thurs., April 13 – Tue., May 30**Hoisting of Koi-nobori (Carp-shaped Streamers)** こい 鯉のぼり ふ 吹き なが 流し**TIME:** 9:00am – 9:00pm (Kure-Portpier Park open hour)**PLACE:** Kure-Portpier Park, Kure City**ACCESS:** Get off at JR Kure-Portpier Station (JR Kure Line).**ADMISSION FEE:** Free**CLOSED:** Every Wednesday**INQUIRIES:** Tenno Shimin Center 0823-38-7543 HP: <http://www.kurepo.com/>

- ☐ Families with boys will hoist koi-nobori (carp-shaped streamers) to assure their boy's success and good health at tango-no-sekku (the Boy's Festival) on the 5th of May.
100 streamers will be hoisted at the event. You can also see them from the JR Kure Line train.
- ☐ Kure Kodomo (children) Festival will also be held on May 4.

**April 14 (Fri.), 15 (Sat.), 16 (Sun.) & 17 (Mon.)****Onomichi Antique Market** おのみちだいこつとうさい 尾道大骨董祭**TIME:** 8:00am – 4:00pm ☆ 8:00am – noon on Monday**PLACE:** Tennen Onsen Onomichi Fureai no Sato (spa facilities), Mitsugi-cho, Onomichi City**ACCESS:** ① From JR Shin-Onomichi Station (JR Sanyo Shinkansen Line), driving time by taxi to destination is 25 minutes.

② From Onomichi-kita I.C. on the Chugoku Yamanami Expressway, driving time to destination is 10 minutes.

③ Take a free shuttle bus to the spa from JR Higashi Onomichi Station (JR Sanyo Line).

Departure Time (one round service a day)

• JR Higashi Onomichi Station: 8:55am • Spa: 3:10pm

INQUIRIES: Iroha Antique Market Office 090-3155-8229**Sat., April 15 – Mon., April 17****Miyatoko Festival** みやとこ 宮床まつり**PLACE:** Around JR Tadanoumi Station (JR Kure Line) and Tokoura Shrine, Takehara City**ACCESS:** From JR Tadanoumi Station (JR Kure Line), walking time to destination is 3 minutes.**INQUIRIES:** Executive Committee 0846-26-1325

- ☐ A plant sale and street market are popular events at this festival.



Please feel free to contact the International Exchange Lounge at 082-247-9715.

E-mail: golounge@pcf.city.hiroshima.jp

April 2017

Sun., April 16**Kannon-san (Deity of Mercy) Festival** かんのんさん**TIME:** Ritual ① From 11:00am onward ② From 2:00pm onward**PLACE:** Gokuraku-ji Temple, Hatsukaichi City**ACCESS:** From JR Hatsukaichi Station (JR Sanyo Line), driving time to destination is 30 minutes.**INQUIRIES:** Gokuraku-ji Temple 0829-39-0008**Thurs., April 20****Hatsuka-no-ichi Market** はつか いち
廿日の市**TIME:** 8:00am – 10:00am**PLACE:** The open Space in front of Hatsukaichi City Hall, Hatsukaichi City**ACCESS:** From Hatsukaichi Shiyakusho-mae (Hiroden Streetcar Miyajima Line), walking time to destination is 5 minutes.**INQUIRIES:** *Hatsukaichi Kanko Kyokai* (Tourist Association) 0829-31-5656**Fri., April 21****Commemorative Ceremony for Kobo-daishi** こうぼうだいししょうみえいく はなくよう
弘法大師 正御影供 (花供養)**TIME:** From 1:00pm onward**PLACE:** Saikoku-ji Temple, Onomichi City**ACCESS:** Take a bus from JR Onomichi Station (JR Sanyo Line) and get off Saikoku-ji-shita. Walking time to destination: 5 minutes**INQUIRIES:** Saikoku-ji Temple 0848-37-0321▣ This is a Buddhist memorial service for *Kobo-daishi* (aka *Kukai*), a Buddhist monk during the Heian Period (794 A.D.–1185 A.D.).**Sat., April 22****Kagura Performance in Yoshiwa** はるせんばつよしわかぐらきょうえんたいかい
春 選抜 吉和 神楽 競演 大会**TIME:** 9:15am – 6:00pm (The venue will open at 8:30am.)**PLACE:** Gymnasium inside *Mominoki Shinrin Koen* (Forest Park), Yoshiwa, Hatsukaichi City**ACCESS:** From Hatsukaichi Shiyakusho-mae Streetcar Stop (Hiroden Miyajima Line), take the No. 13 bus bound for Yoshiwa and get off at Yoshiwa-shisho (a 90 min. bus ride)**TICKETS:** ◆ Advance: High school students and older-¥2,000

Junior high and Elementary school students-¥500

◇ Advance tickets are sold at *Hiroshima Yume Plaza* on the *Hondori* shopping street and *Alpark Tenmaya* 3F, Ticket Salon, etc.

◆ At the door: High school students and older-¥2,500

Junior high and Elementary school students-¥500

INQUIRIES: *Hatsukaichi Kanko Kyokai* (Tourist Association), Yoshiwa Branch 0829-77-2404

Hatsukaichi City Office, Yoshiwa Branch 0829-77-2111

Mominoki Shinrin Koen 0829-77-2011**Sat., April 22 & Sun., April 23****The 74th Onomichi Minato Festival** だい かいおのみち まつり
第74回 尾道 みなと 祭**PLACE:** Central area of Onomichi City**ACCESS:** Get off at JR Onomichi Station (JR Sanyo Line).**INQUIRIES:** *Kanko Ka*, Onomichi City Hall 0848-25-7184

Please feel free to contact the International Exchange Lounge at 082-247-9715.

E-mail: golounge@pcf.city.hiroshima.jp

April 2017

☐ This is the biggest festival in Onomichi. Concerts, dancing parades, etc. will be held.

Sun., April 23

Ondo Kiyomori Festival おんどきよもりまつり 音戸清盛祭

TIME: 10:30am – 3:30pm

PLACE: From Tsuboi Area to *Ondo Shimin Center*, Ondo-cho, Kure City

ACCESS: From JR Kure Station (JR Kure Line), take a bus bound for Ondo & Kurahashi (via Hatami) and get off at Ondo Shimin Center. Walking time to destination: 1 minute

INQUIRIES: Executive Committee 0823-52-2281

☐ This festival comes from Ondo-cho's traditional culture, and it is designated as one of Kure City's intangible cultural assets. *Daimyo* (feudal lord) parade will be held. This event is held for the first time in five years.

Sat., April 29

The 60th Kure Minato Festival だい かいくれ まつり 第60回呉みなと祭

TIME: 10:00am – 6:00pm ◇Parade: 2:00pm – 4:30pm (tentative)

PLACE: Kuramoto-dori Street and Renga-dori Street, Kure City

ACCESS: From JR Kure Station (JR Kure Line), walking time to destination is 10 minutes.

INQUIRIES: *Kure Matsuri Kyokai* 0823-21-0151

☐ This is one of the biggest festivals in Kure. Various events such as parades, stage performances and an open-air market will be held.

Sat., April 29

Sandankyo Spring Festival さんだんきょうはる 三段峡春まつり

TIME: 11:00am – 3:15pm

PLACE: Main entrance of Sandankyo Gorge, Akiota-cho

ACCESS: Take a bus bound for Sandankyo from Hiroshima Bus Center (Sogo Hiroshima Department Store, 3F) and get off at the last stop.

INQUIRIES: *Akiota-cho Kanko Kyokai* (Tourist Association) 0826-28-1800

☐ A festival that announces the start of this year's Sandankyo Gorge hiking season. Various events, such as local performing arts shows, will be held.

Sun., April 30

The 10th Handcrafts Market at Kogen-ji Temple on Etajima

だい かい
第10回 えたじま て づくり いち
えたじま手づくり市

TIME: 10:00am – 3:00pm

PLACE: Kogen-ji Temple, Etajima City

ACCESS: Take a ferry to Takada Port from Hiroshima Port. Walking time to destination: 7 minutes

INQUIRIES: Kogen-ji Temple 0823-45-2422 E-mail: maki-p@dream.ocn.ne.jp

Wed., May 3 & Thurs., May 4

Takehara Take (Bamboo) Festival たけはら たけ たけはら竹まつり

TIME: 10:00am – 4:00pm

PLACE: *Machi-nami Hozon Chiku* (Historical areas and buildings), Takehara City

ACCESS: From JR Takehara Station (JR Kure Line), walking time to destination is 15 minutes.

INQUIRIES: Executive Committee 0846-22-4331

☐ *Kaguya-hime* (Moon Princess) parade, bamboo craft classes, tasting *Sasa-zake* (a type of sake), etc.



Please feel free to contact the International Exchange Lounge at 082-247-9715.

E-mail: golounge@pcf.city.hiroshima.jp

April 2017

Wed., May 3 – Sun., May 7**Miyoshi Wine Festival**はる みよし まつり
春の三次ワイン祭**TIME:** 10:30am – 4:00pm**PLACE:** Hiroshima Miyoshi Winery, Miyoshi City**ACCESS:** Take a bus from JR Miyoshi Station (JR Geibi Line) and get off at Hiroshima Miyoshi Winery.**INQUIRIES:** Hiroshima Miyoshi Winery 0824-64-0200

▣ Various events will be held.

Wed., May 3 – Sun., May 28**Tomonoura *Tai-ami* (Traditional Fish-catching)**とも うらんこうたいあみ
鞆の浦観光鯛網**TIME:** Monday - Saturday: 1:30pm – 3:20pm

Sundays & national holidays: ① 10:30am – 12:20pm ② 1:30pm – 3:20pm

PLACE: Sensui Island, Tomo-cho, Fukuyama City**ACCESS:** Take a bus bound for Tomonoura from JR Fukuyama Station (JR Sanyo Line) and get off at Tomonoura (a 30 min. bus ride). Then get on a ferry to Sensui Island (a 5 min. ferry ride).**TICKET FEE:** High school students and up - ¥2,800

Junior high and Elementary school students - ¥1,400

◇ You can ride a ferry to the island without charge if you show your ticket for the event.

◇ Tickets will be sold at the ferry landing during the event period.

☺ Tickets including bus fare* are also available.

High school students and up - ¥3,300

Junior high and Elementary school students - ¥1,650

*Round trip tickets are from JR Fukuyama Station to Tomonoura

INQUIRIES: *Fukuyama-shi Kanko Convention Kyokai* 084-926-2649▣ *Tai-ami*, net-fishing of porgy, is a traditional fish-catching method which has a history of 380 years.**Mon., May 8****Hana Matsuri at Tounji Temple**とうんじ はなまつ
洞雲寺の花祭り**TIME:** Ritual – From 10:00am onward**PLACE:** Tounji Temple, Hatsukaichi City**ACCESS:** From JR Hatsukaichi Station (JR Sanyo Line), walking time to destination is 10 minutes.**INQUIRIES:** Tounji Temple 0829-31-2461

▣ This is a ceremony to celebrate Buddha's birthday.

▣ Tounji Marché will also be held from 10:00am to 4:00pm on the day.

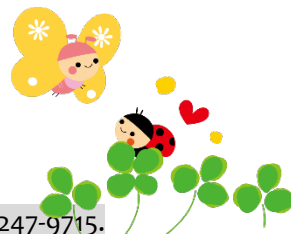
Sat., May 13**The 26th Onomichi *Noh* Performance**だい かいおのみちたきぎのう
第26回尾道薪能**TIME:** 6:00pm – 8:00pm ◇ The venue will open at 5:00pm**PLACE:** Jodo-ji Temple, Amida-do, Onomichi City**ACCESS:** Take a bus from JR Onomichi Station (JR Sanyo Line) and get off Jodo-ji-shita (a 7 min. bus ride).**TICKETS:** Advance: Adults - ¥3,000 University students - ¥1,000

At the door: Adults - ¥3,500 University students - ¥1,000

◇ Free admission for high school students and under

◇ Advance tickets are sold at *Fukuya* Department Stores (Hatchobori & Hiroshima Station) and EDION Hiroshima Play Guide (*Honkan*, B1F; Kamiya-cho) in Hiroshima City.**INQUIRIES:** *Onomichi Kanko Kyokai* (Tourist Association) 0848-37-9736

Executive Committee 080-6344-3360 (Kajikawa)

▣ *Noh* is a traditional Japanese performing art.

Please feel free to contact the International Exchange Lounge at 082-247-9715.

E-mail: golounge@pcf.city.hiroshima.jp

April 2017

Events Held in Yamaguchi Prefecture



Sat., April 8 & Sun., April 9

Byakko (white fox) Festival at Yuda Onsen ゆだおんせんびやっこ 湯田温泉白狐まつり

TIME: ◆ Apr. 8: 10:00am – 9:00pm ◆ Apr. 9: 10:00am – 3:00pm

PLACE: Yuda Onsen, *Inoue Koen* (park), Yamaguchi City

ACCESS: From JR Yuda Onsen Station (JR Yamaguchi Line), walking time to destination is 10 minutes.

INQUIRIES: Executive Committee 083-920-3000

▣ Various events such as a white fox parade on the 8th and food kiosks & a motor show on the 9th will be held.

Sun., April 23

Tenjin Spring Festival in Yanai やないてんじんはる 柳井天神春まつり

TIME: ◆ *Daimyo* (feudal) Parade: From 1:00pm onward

◆ Pre-event will be held from 7:00pm on the 22nd.

PLACE: Yanai Tenmangu Shrine and *Yanai Ekimae* Street, Yanai City

ACCESS: From JR Yanai Station (JR Sanyo Line), walking time to destination is 15 minutes.

INQUIRIES: *Yanai Shoko Kaigisho* 0820-22-3731

▣ The “*Daimyo's* (feudal lords in the Edo Period) Retinue” is the highlight of this festival.

Sat., April 29

Kintaikyo Matsuri (Festival) きんたいきょう 錦帯橋まつり

TIME: 9:00am – 3:30pm

PLACE: Around Kintaikyo Bridge, Iwakuni City

ACCESS: Take a train on the JR Sanyo Line and get off at JR Iwakuni Station (a 50min. ride). Take a bus for Kintaikyo Bridge from the station (a 20min. bus ride).

INQUIRIES: Executive Committee 0827-41-2037

▣ Performance of a feudal lord's procession, arquebus demonstration (an old style of gun used in the 15th – 17th centuries), *taiko* (traditional Japanese drums) performance, etc.

Mon., May 1 – Fri., May 5

Hagiyaki (Hagi Ware) Festival はぎやき 萩焼まつり

TIME: 9:00am – 5:30pm

PLACE: *Hagi Shimin Taiikukan* (gymnasium), etc., Hagi City

ACCESS: From JR Hagi Station (JR Sanin Line), walking time to destination is 5 minutes.

INQUIRIES: Executive Committee 0838-25-3333

▣ *Hagiyaki* is a type of traditional pottery produced in Hagi City and one of the famous potteries of Japan.

There will be various event areas such as a *hagiyaki* market and a pottery wheel experience.



Please feel free to contact the International Exchange Lounge at 082-247-9715.

E-mail: golounge@pcf.city.hiroshima.jp

April 2017