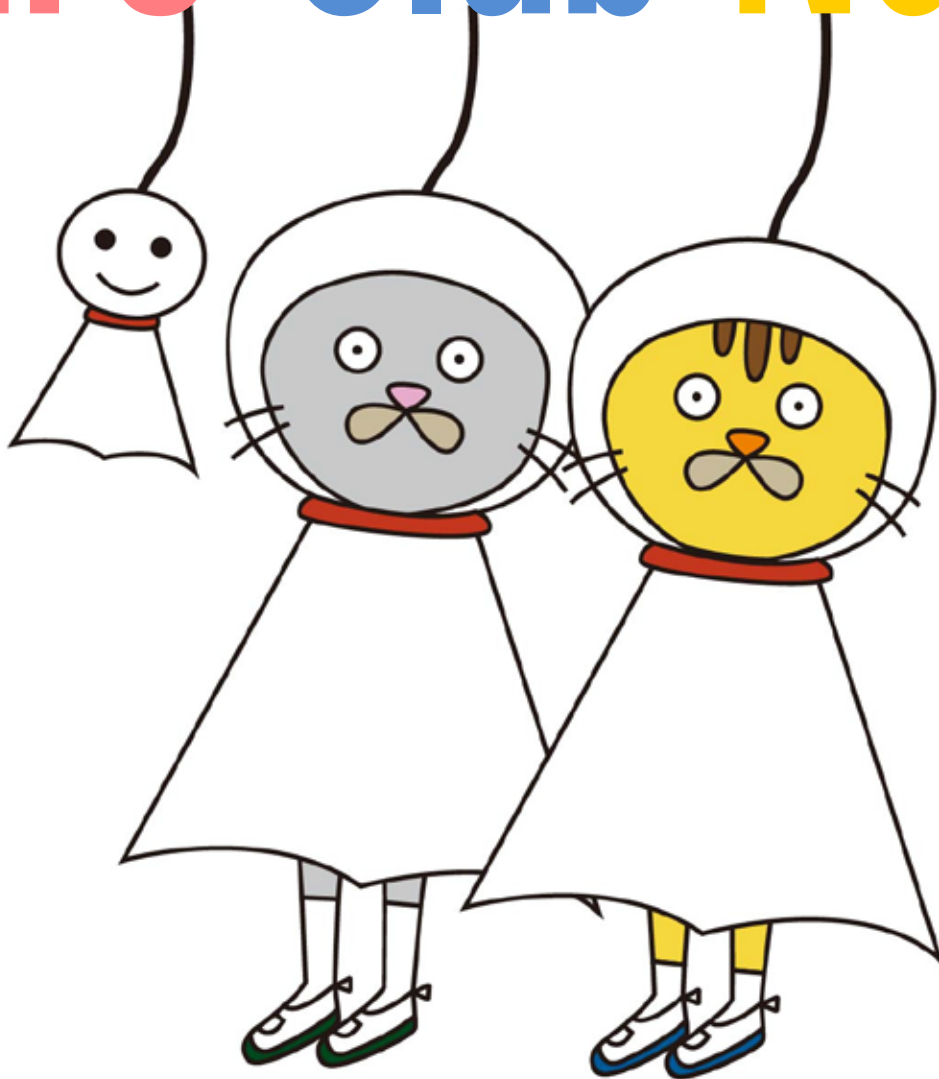


Hiro Club News



For your cultural life in Hiroshima

てるてる坊主 *Teruteru-bouzu*

There's a tradition going back many centuries to hang a small white paper figure under the eaves to pray for fine weather. This is called a *teruteru-bouzu* (=shine, shine, Buddhist priest). The doll is made from a square piece of white paper with some padding placed in the center. Then the paper is folded and some thread tied under the padding to form a little head and to provide a loop to hang it by. Nowadays, the *teruteru-bouzu* is sometimes given simple facial features, but the tradition was to only paint a face on if the wish came true, rather like filling in the second eye of a *daruma* doll. Farmers used to hang out a black-headed version to pray for rain, and *teruteru-bouzu* were sometimes hung upside down for the same reason. When the wishing was over, the doll was supposed to be released in a river. Many children still make one of these little dolls the day before a trip, picnic, or sports day (Abstracted from 『ニッポン風物詩』, pp204-207, IBC パブリッシング).

In Japan, from early June to the middle of July, except for a few breaks, it rains or is cloudy almost every day. We call this season "*tsuyu*", rainy season and a damp climate continues for a while until summer comes. Rain at this season is very important to avoid a risk of summer water shortages and for rice cultivation. However, if you miss sunshine during this season, what about hanging a *teruteru-bouzu* to pray for a fine weather?

June 2017

June 2017

- ◆ **City Office Notices**
- ◆ **Hiroshima Peace Culture Foundation News**
- ◆ **Movie Theaters**
- ◆ **Bilingual TV Programs**
- ◆ **Concerts & Plays**
- ◆ **Museums**
- ◆ **Sports**
 - **Hiroshima Toyo Carp Schedule 2017**
 - **Sanfrecce Hiroshima FC Game Schedule 2017**
 - **Swimming Pool Information**
- ◆ **Events**
 - **Seasonal Event Information**
 - **Municipal Facilities**
- ◆ **Lounge & Library**
 - **Library News**
 - **Trio-phone Service**
(Multilingual interpretation over the telephone)
 - **Assisting with International Cooperation**
 - **Garbage Disposal**



**Hiroshima Peace Culture Foundation
International Exchange Lounge**

1-5 Nakajima-cho, Naka-ku, Hiroshima 730-0811

E-mail: golounge@pcf.city.hiroshima.jp

Tel. 082-247-9715 Fax. 082-242-7452

◻ Visit the HIRO CLUB NEWS WEBSITE for information online. ◻

URL: <http://www.pcf.city.hiroshima.jp/ircd/english/hiroclubnews/index.html>

City Office Notices

City Office Notices contains selected information from the Hiroshima City Newsletter, *ひろしま市民と市政 Hiroshima Shimin to Shisei*. City Office Notices is published twice a month and available in print at the International Exchange Lounge, and online at our website:
<http://www.pcf.city.hiroshima.jp/ircd/english/hiroclubnews/index.html>

June 1, 2017

Topics

- ✿ National Health Insurance for Fiscal Year 2017
- ✿ Medical Allowance for Single Parent Families
- ✿ Child Care Service during School Summer Holiday Available
- ✿ Subsidy for Cultural Activities
- ✿ Seeking Financial Supporters for the Hiroshima Minato Yume Fireworks Festival
- ✿ Temporary Closure

National Health Insurance for Fiscal Year 2017

平成29年度国民健康保険料 保険料率が決まりました(P3)

The National Health Insurance (NHI) (国民 健康 保険) premium for fiscal year 2017 has been decided and the payment notice and leaflet will be sent to applicable residents of Hiroshima City on Thursday, June 15.

The NHI is one of the health insurance programs available in Japan. It is supported by insurance premiums paid by NHI members and, in turn, pays for a portion of members' medical treatments. Residents of Hiroshima City are required to join the NHI unless they are Long-Term Care Insurance System members or receive health insurance from their employers. The head of household is responsible for the payment of the premiums, which are calculated every year based on household income and the number of household members. For further inquiries on premium

calculations, please contact the following information center: 国民 健康 保険料 お問い合わせ

Center
センター (National Health Insurance Premium Call Center) Tel. 512-0243. Available from Monday, June 5, only in Japanese.

INQUIRIES: *Hoken Nenkin Ka* (National Insurance & Pension Division)
Tel. 504-2159 Fax. 504-2135

Medical Allowance for Single Parent Families

ひとり親家庭などの医療費の補助(P4)

WHO: Those who are residents of Hiroshima City, covered by health insurance, and fulfill any of the conditions below:

- A child who is 18 years old or younger (allowance provided until March 31 following the child's 18th birthday) whose parent is single and holds custody of the child.
- A child who is not in the care of a biological parent, and whose guardian is single.
- Any others who are in similar situations.

There are further conditions which need to be fulfilled. Please inquire for further information.

SUBSIDY FOR: Medical expenses (excludes hospitalization expenses for meals and bed)

APPLICATION: Apply at your local ward office's *Hoken Fukushi Ka* (Health & Welfare Division) with your health insurance card and *inkan* (personal seal)

INQUIRIES: *Hoken Fukushi Ka* (Health & Welfare Division), local Ward Offices

Ward Office	Telephone	Fax	Ward Office	Telephone	Fax
Naka	504-2569	541-3835	Asaminami	831-4945	877-2299
Higashi	568-7733	262-6986	Asakita	819-0605	815-3906
Minami	250-4131	252-7179	Aki	821-2813	822-8069
Nishi	294-6342	232-9783	Saeki	943-9732	923-5098

Child Care Service during School Summer Holiday Available

夏休み中の放課後児童クラブの利用申込を受け付けます(P5)

WHO: Elementary school students (note that there are further conditions which need to be fulfilled)

APPLICATION: Apply at your local Jido Kan 児童館 (Child Center) or Hokago Jido Club 放課後児童クラブ (After School Club) before Thursday, June 15. Prior appointment is required.

INQUIRIES: *Hokago Taisaku Ka* (After School Child Care Division) Tel. 242-2014 Fax. 242-2018

Subsidy for Cultural Activities

文化活動助成事業募集(P5)

WHO: Groups or individuals who will hold cultural activities in Hiroshima City between October 2017 and March 2018 and make a public presentation about them. An applicant screening will be held.

SUBSIDY AMOUNT: Half of project cost (up to 200,000yen)

APPLICATION: Send a prescribed application form postmarked by Friday, June 30 to ^{BunkaZaidan}文化財団

^{Jigyo Ka}事業課

(Hiroshima City Culture Foundation, Business Division), then selection will take place. The applications are available at the office and online at Hiroshima City's official website.

INQUIRIES: *Bunka Zaidan* (Hiroshima City Culture Foundation) Tel. 244-0750 Fax. 245-0246

Seeking Financial Supporters for the Hiroshima Minato Yume Fireworks Festival

「広島みなと 夢 花火大会」の協賛者を募集します(P5)

The Hiroshima Minato Yume Fireworks Festival will be held at *Hiroshima Ko* (Seaport) on Saturday, July 22. The Executive Committee will accept donations beginning Saturday, June 10

at the Rest House* or ^{HiroshimaMatsuri linkai Jigyo SuishinHonbu}広島 祭 委員会事業推進 本部 (*Hiroshima Matsuri* Executive Committee). Those who give financial support to the Festival will be provided with a special viewing space. On the first day, up to two space allotments may be awarded to donors for seating Types A or B. For details, including the donation procedure, please contact the Executive Committee.

*The Rest House is located in Peace Memorial Park, at the foot of Motoyasu-bashi Bridge.

【Financial Support Amount】

15,000 yen = Type A (Space for six people)	400 applications will be accepted.
7,000 yen = Type B (Bench for three people)	875 applications will be accepted.
2,000 yen = Type C (Space for one person)	3,500 applications will be accepted.

Would you like to have your own memorial fireworks display?

If you want to have fireworks to celebrate your own special occasion, please apply by postcard with

the applicant's name, address, phone number and application rationale to ^{HiroshimaMatsuri linkai}広島 祭 委員会

^{Jigyo SuishinHonbu}事業推進 本部

(*Hiroshima Matsuri* Executive Committee, 1-1 Nakajima-cho, Naka-ku 7300811)

from Saturday, June 10 to Friday, June 23. Applications can be faxed, as well. 50,000 yen will be charged. Five applications will be selected by lottery. For further information, please contact the Executive Committee.

INQUIRIES: *Hiroshima Matsuri linkai* (*Hiroshima Matsuri* Executive Committee)

Tel. 247-6805 Fax. 247-6917

Temporary Closure

臨時休館(P6)

Manga Toshokan, Asa branch Tel. 830-3675 Fax. 830-3676

CLOSED: Thursday, June 8 – Wednesday, June 14

Edited and published by the Hiroshima Peace Culture Foundation
International Affairs Department, International Relations and Cooperation Division
Tel: (082) 242-8879, Fax: (082) 242-7452, E-mail: internat@pcf.city.hiroshima.jp
International Exchange Lounge
Tel: (082) 247-9715, E-mail: golounge@pcf.city.hiroshima.jp
Website: <http://www.pcf.city.hiroshima.jp/ircd/english/index.html>
編集・発行 公益財団法人広島平和文化センター国際部国際交流・協力課

Hiroshima Peace Culture Foundation News

Event schedules are subject to change. Please contact event organizers to confirm listed information.

June 2017

CIR Question & Answer Day

Are you looking for advice about Hiroshima?

Come in for a chat with our C.I.R., Benjamin Swallow!

DATE & TIME: Wednesday, June 28 1:30 pm – 3:30 pm

PLACE: International Exchange Lounge

(International Conference Center Hiroshima 1F, 1-5 Nakjima-cho, Naka-ku)

RESERVATIONS ARE REQUIRED: Reservations can be made in person or by telephone at the International Exchange Lounge TEL: 247-9715 (Lounge open hours 9:00 am – 7:00 pm)

The East Building of the Peace Memorial Museum Reopened

The East Building was reopened on Wednesday, April 26, along with the completion of its renovation process. The Main Building is currently closed for renovations and reorganization of the permanent exhibits. The comprehensive renovation process of the Hiroshima Peace Memorial Museum is to be completed in July 2018.

INQUIRIES: Curatorial Division, Peace Memorial Museum Tel. 241-4004

Website: <http://hpmmuseum.jp/?lang=eng>

Come and Listen to a Talk by an A-bomb Legacy Successor

(Free, no reservation required)

As the A-bomb survivors age, the City of Hiroshima has started a three-year training program for official A-bomb Legacy Successors to ensure that the A-bomb survivors' experiences and desires for peace are faithfully inherited and shared with as many people as possible. A talk by successors is now open to the public without charge, in English or Japanese. (Note: Talks are NOT delivered by A-bomb survivors.)

SCHEDULE: 11:00am – noon (Japanese)

12:30pm – 1:30pm (Japanese)

2:00pm – 3:00pm (English)

(Talks are unavailable on days when the Hiroshima Peace Memorial Museum is closed)

VENUE: Video Theater, 1st Floor, East Building of the Hiroshima Peace Memorial Museum

TALK CONTENT:

- An A-bomb survivor's experience and his/her desire for peace.
- Realities of the A-bombing (wartime life in Japan, outline of the A-bomb damage, A-bomb's impact on human bodies, etc.)
- Successor's desire for peace

INQUIRIES: Outreach Division, Hiroshima Peace Memorial Museum

Tel. 242-7828 E-mail: keihatsu@pcf.city.hiroshima.jp

Edited and published by the Hiroshima Peace Culture Foundation
International Affairs Department, International Relations and Cooperation Division
Tel: (082) 242-8879, Fax: (082) 242-7452, E-mail: internat@pcf.city.hiroshima.jp
International Exchange Lounge
Tel: (082) 247-9715, E-mail: golounge@pcf.city.hiroshima.jp
Website: <http://www.pcf.city.hiroshima.jp/ircd/english/index.html>
編集・発行 公益財団法人広島平和文化センター国際部国際交流・協力課

Movie Theaters

June 2017



Here is a general list of movies being shown in theaters around Hiroshima. Due to unpredictable changes in scheduling, listings are subject to change without notice. Foreign films are usually in their original language with Japanese subtitles. When not specified, the admission is **¥1,800** for adults. Theaters offer various kinds of admission discount services, so please inquire at each theater for more information.

SALON CINEMA

[Hiroshima Toei Plaza Bldg. 8F, 16-10 Hatchobori,
Naka-ku / Tel: 082-962-7772 /
URL: <http://www.johakyu.co.jp/>]

From Apr. 21 **Beauty and the Beast** /
'17 USA
Until Jun. 9 **Café Society** / '16 USA

HATCHOZA

[Fukuya Department Store Hatchobori 8F,
6-26 Ebisu-cho, Naka-ku / Tel: 082-546-1158 /
URL: <http://www.johakyu.co.jp/>]

YOKOGAWA CINEMA Tel : 231-1001

[3-1-12 Yokogawa-cho, Nishi-ku / Tel: 082-231-1001 /
URL: <http://yokogawa-cine.jugem.jp/>]

Jun. 1 – 14 **Tigers** / '14 India, France, UK
Jun. 1 – 14 **Smrtu u Sarajevu / Death in Sarajevo** / '16 France, Bosnia and Herzegovina
Jun. 1 – 7 **俠女 / A Touch of Zen** / '71 Taiwan
Jun. 8 – 21 **Taxi** / '15 Iran
Jun. 8 – 14 **龍門客棧 / Dragon Inn** / '67 Taiwan
Jun. 15 – 23 **Bacalaureat** / '16 Romania, France, Belgium

AEON CINEMA HIROSHIMA

[Hiroshima Danbara Shopping Center 6F, 1-3-52
Danbara-minami, Minami-ku / Tel : 082-261-3770 / URL:
<http://www.aeoncinema.com/cinema/hiroshima/>]

From Apr. 21 **Beauty and the Beast** /
'17 USA
From May 27 **Manchester by the Sea** /
'16 USA
From Jun. 1 **Logan** / '17 USA
From Jun. 9 **Patriots Day** / '16 USA
Jun. 17 – 23 **Demolition** / '15 USA
From Jun. 17 **The Light between Oceans** / '16 USA, Australia, New Zealand
From Jun. 17 **King Arthur: Legend of the Sword** / '17 UK, Australia, USA

From Jun. 24 **Lo Chiamavano Jeeg Robot** / '15 Italy
Jun. 24 – Jul. 7 **La Fille Inconnue** / '16 Belgium, France
Jun. 24 – Jul. 7 **The Handmaiden** / '16 Korea
From Jun. 24 **Hacksaw Ridge** / '16 Australia, USA
From Jul. 1 **Pirates of the Caribbean: Dead Men Tell No Tales** / '17 USA
From Jul. 15 **Cars 3** / '17 USA

109 CINEMAS

[Alpark 3F (north bldg.), 4-7-1 Kusatsu-minami, Nishi-ku / Tel: 05700-002-109 /
URL: <http://www.109cinemas.net/Hiroshima>]

From Apr. 21 **Beauty and the Beast** / '17 USA
From Apr. 28 **The Fate of the Furious** / '17 USA
From May 12 **Guardians of the Galaxy Vol. 2** / '17 USA
From Jun. 1 **Logan** / '17 USA
From Jun. 3 **The Edge of Seventeen** / '16 USA
From Jun. 3 **Blood Father** / '16 France
From Jun. 17 **King Arthur: Legend of the Sword** / '17 UK, Australia, USA
From Jun. 24 **危城 / Call of Heroes** / '16 China
From Jun. 24 **Hacksaw Ridge** / '16 Australia, USA
From Jul. 1 **Pirates of the Caribbean: Dead Men Tell No Tales** / '17 USA
From Jul. 8 **Life** / '17 USA
From Jul. 15 **Power Rangers** / '17 USA, Canada
From Jul. 28 **The Mummy** / '17 USA



Please feel free to contact the International Exchange Lounge at 082-247-9715.

E-mail: golounge@pcf.city.hiroshima.jp

June 2017

TOHO CINEMAS MIDORII

[Fuji Grand 3F, 1-5-2 Midorii, Asaminami-ku / Tel : 082-831-8060 / URL: <http://www.tohotheater.jp/>]
 Adults-¥1,800, University students-¥1,500, From preschoolers (3 years old and under) to High school students-¥1,000,

From Apr. 21 **Beauty and the Beast /**
 '17 USA
 From May 12 **Guardians of the Galaxy**
Vol. 2 / '17 USA
 From May 19 **Arrival /** '16 USA
 From Jun. 1 **Logan /** '17 USA
 From Jun. 9 **Patriots Day /** '16 USA
 From Jun. 16 **鉄道飛虎 / Railroad Tigers /**
 '16 China
 From Jun. 17 **King Arthur: Legend of the**
Sword / '17 UK, Australia, USA
 From Jun. 24 **Hacksaw Ridge /**
 '16 Australia, USA

HIROSHIMA WALD 11

[AEON Mall Hiroshima Fuchu 4F, 2-1-1 Osu, Fuchu-cho, Aki-gun / Tel : 082-561-0600 / URL: <http://kinezo.jp/pc/wald11>]

From Apr. 21 **Beauty and the Beast /**
 '17 USA
 From Apr. 28 **The Fate of the Furious /**
 '17 USA
 From May 12 **Guardians of the Galaxy**
Vol. 2 / '17 USA
 From May 12 **Split /** '17 USA
 From May 19 **Arrival /** '16 USA
 From May 20 **Live by Night /** '16 USA
 From Jun. 1 **Gold /** '16 USA
 From Jun. 1 **Logan /** '17 USA
 From Jun. 9 **Patriots Day /** '16 USA
 From Jun. 10 **The Duel /** '16 USA
 From Jun. 17 **King Arthur: Legend of the**
Sword / '17 UK, Australia, USA
 From Jun. 24 **Hacksaw Ridge /**
 '16 Australia, USA
 From Jun. 24 **Free Fire /** '16 UK, France
 From Jun. 24 **Going in Style /** '17 UK
 From Jul. 1 **Pirates of the Caribbean:**
Dead Men Tell No Tales /
 '17 USA
 From Jul. 7 **John Wick: Chapter 2 /**
 '17 USA
 From Jul. 28 **The Mummy /** '17 USA

Movie Showings at 10 am in the Morning

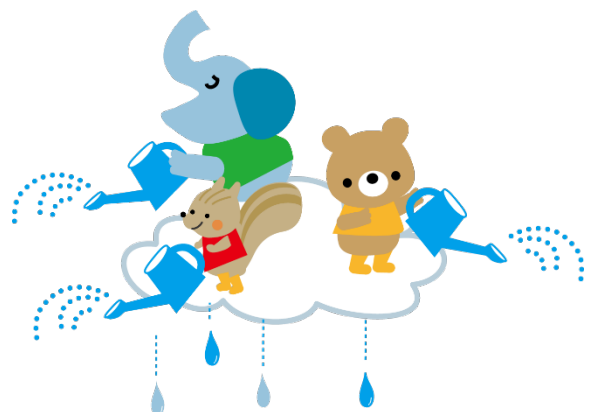
May 27 – Jun. 9 **The Untouchables /** '87 USA
 Jun. 10 – 23 **Jules et Jim /** '61 France
 Jun. 24 – Jul. 7 **All About Eve /** '50 USA
 Jul. 8 – 21 **Scent of Woman /** '92 USA
 Jul. 22 – Aug. 4 **Good Will Hunting /** '97 USA
 Aug. 5 – 11 **Roman Holiday /** '53 USA

Aug. 12 – 18 **Sabrina /** '54 USA
 Aug. 19 - 25 **Love in the Afternoon /**
 '57 USA
 Aug. 26 – Sept. 8 **How to Steal a Million /**
 '66 USA

T-JOY HIGASHI HIROSHIMA

[Fuji Grand Higashi Hiroshima 3F, 4405 Misonou, Saijo-cho, Higashi Hiroshima-shi / Tel : 082-493-6779 / URL: http://kinezo.jp/pc/t-joy_hiroshima]

From Apr. 21 **Beauty and the Beast /**
 '17 USA
 From May 12 **Guardians of the Galaxy**
Vol. 2 / '17 USA
 From Jun. 1 **Logan /** '17 USA
 From Jun. 17 **King Arthur: Legend of the**
Sword / '17 UK, Australia, USA
 From Jun. 24 **Hacksaw Ridge /**
 '16 Australia, USA
 From Jul. 1 **Pirates of the Caribbean:**
Dead Men Tell No Tales /
 '17 USA
 From Jul. 15 **Power Rangers /** '17 USA,
 Canada



Please feel free to contact the International Exchange Lounge at 082-247-9715.

E-mail: golounge@pcf.city.hiroshima.jp

June 2017



Bilingual TV Programs

June 2017

#1: NHK Sogo	#4: Hiroshima TV
#2: NHK E Tele	#5: Home TV
#3: RCC	#8: TSS

◆ Some changes may occur because of special programming.

NEWS

Monday - Sunday

NHK News 7 / 7:00 pm – 7:30 pm (#1)

Monday - Friday

News Watch 9 / 9:00 pm – 10:00 pm (#1)

REGULAR PROGRAMS

Thursday

Through the Wormhole / 10:00 pm – 10:45 pm (#2) ◇ Except the 29th

TED / 11:00 pm – 11:25 pm (#2)

◇ Rerun: Sat., 1:25 am – 1:52 am

Saturday

Dramatic Earth (Documentary Program) /

7:00 pm – 7:45 pm (#2)

◇ Rerun: Mon., midnight – 12:45 am

DRAMAS

Monday

Hawaii Five-O Season 1 ('10 USA) / 1:25 am – 2:20 am (#4) ◇ the 26th: 1:50 am – 2:45 am

Wednesday

Game Shakers ('15 USA) / 7:25 pm – 7:50 pm (#2) ◇ From the 7th

Saturday

The Thundermans ('13 USA) / 6:25 pm – 6:50 pm (#2)

Sunday

Downton Abbey Season 6 ('15 UK, USA) / 11:00 pm – 11:52 pm (#1)

ANIMATIONS

Saturday

Curious George / 8:35 am – 9:00 am (#2)

SpongeBob SquarePants / 6:00 pm – 6:25 pm (#2)

Sunday

Thomas & Friends / 5:30 pm – 5:50 pm (#2)

MOVIES

3rd No Man's Land / '01 France, Italy, Belgium, UK, Slovenia / 1:33 am – 3:30 am (#3)

3rd Minority Report / '02 USA / 9:00 pm – 11:10 pm (#8)

- 4th Chef / '14 USA / 1:50 am – 3:25 am (#8)
- 4th The Tourist / '10 USA, France / 2:08 am – 4:00 am (#3)
- 9th The Wolverine / '13 USA / 9:00 pm – 10:54 pm (#4)
- 10th Once Upon a Time in Mexico / '03 Mexico, USA / 1:33 am – 3:30 am (#3)
- 10th Independence Day / '96 USA / 9:00 pm – 11:10 pm (#8)
- 11th The Taking of Pelham 123 / '09 USA / 1:50 am – 3:45 am (#8)
- 11th Sleepy Hollow / '99 USA / 2:08 am – 4:00 am (#3)
- 17th Jersey Girl / '04 USA / 1:38 am – 3:35 am (#8)
- 17th Pirates of the Caribbean: The Curse of the Black Pearl / '03 USA / 9:30 pm – 11:40 pm (#8)
- 18th Warm Bodies / '13 USA / 2:08 am – 4:00 am (#3)
- 24th Sur Mer Levres / '01 France / 1:33 am – 3:56 am (#3)
- 24th Pirates of the Caribbean: Dead Man's Chest / '06 USA / 9:00 pm – 11:10 pm (#8)
- 25th Vanilla Sky / '01 USA / 1:50 am – 3:45 am (#8)

SPORTS

□ Soccer

■ UEFA Champions League: Juventus x Real Madrid (#8) ◇ Broadcasted in Japanese only

4th 3:35 am – 6:00 am

■ KIRIN Challenge Cup 2017: Japan x Syria (#4)

◇ Broadcasted in Japanese only

7th 7:20 pm – 9:24 pm

■ 2018 FIFA World Cup Russia: Asian Qualifiers – Road to Russia (#5) ◇ Broadcasted in Japanese only

13th Iraq x Japan / 9:00 pm – 11:25 pm

□ Rugby

■ LIPOVITAN D Challenge Cup 2017

◇ Broadcasted in Japanese only

10th Japan x Romania / 2:30 pm – 4:35 pm (#4)

17th Japan x Ireland / 1:50 pm – 4:00 pm (#1)

24th Japan x Ireland / 2:30 pm – 4:35 pm (#4)

□ Golf

■ U.S. Open (#5) ◇ Broadcasted in Japanese only

16th 2:36 am – 4:56 am

17th 5:00 am – 8:00 am

18th 4:00 am – 9:00 am

19th 2:40 am – 5:50 am

□ Baseball

■ MLB (#1)

25th 2:00 am – 5:00 am

26th 2:00 am – 4:20 am

Please feel free to contact to the International Exchange Lounge at 082-247-9715.

E-Mail: golounge@pcf.city.hiroshima.jp

June 2017

Concerts & Plays



Ticket Offices

- ① EDION Play Guide (SUNMALL, 1F) (Kamiya-cho, Naka-ku; Tel. 247-5111)
- ② YAMAHA Music (Kamiya-cho, Naka-ku; Tel. 244-3779 Closed on the 1st & the 3rd Wednesdays)
- ③ Hiroshima Yume Plaza (Hondori, Naka-ku; Tel. 544-1122 Closed on Wednesdays)
- ④ Kawai Hiroshima (2-2-6 Kamiya-cho, Naka-ku; Tel. 243-9291 Closed on Mondays)
- ⑤ Fukuya Department Store, Hatchobori (7F) (Ebisu-cho, Naka-ku; Tel. 246-6111)
- ⑥ Fukuya Department Store, Hiroshima Station (7F) (Matsubara-cho, Minami-ku; Tel. 568-3111)
- ⑦ Alpark Tenmaya (3F) (Inokuchi-myoin, Nishi-ku; Tel. 501-1111)
- ⑧ Hiroshima Arts Gakki (Hatchobori, Naka-ku; Tel. 227-6601)

Date / Starting Time (Opening Time) / Venue / Ticket Price / Tickets Go on Sale Date / Ticket Offices / Inquiries

♪ Event schedules are subject to change.

Please contact the event office before you go. ♪

JUNE

★ **LEGEND: The 10th Anniversary Concert Tour**

4th Sun. / 2:00 pm (1:30 pm) / Hiroshima Kenmin Bunka Center / ¥6,000 / Now on sale / Lawson, Ticket PIA, e+, ① / UNION Music Office 082-247-6111

♪ LEGEND is an operatic vocal group consisting of five men.

★ **Solisten Ensemble & Hiroshima Kantorei Joint Concert: German Romantic Choral Music**

4th Sun. / 2:30 pm (2:00 pm) / Nishi Kumin Bunka Center / ¥900 / Please ask the concert organizer for ticket information. / 070-5294-4610 (Nakano), E-mail: hiroshimakantorei.2014@gmail.com

★ **Mining ~ Jim O'Rourke x Eiko Ishibashi x Riki Hidaka**

6th Tue. / 7:00 pm (6:00 pm) / Hiroshima Club Quattro / Advance-¥4,000 At the door-¥4,500 / Now on sale / e+, Ticket PIA, Lawson, ①, Tower Records Hiroshima / Hiroshima Club Quattro 082-542-2280

★ **Jesse Harris "Music for Chameleons" Tour in Japan 2017**

7th Wed. / 7:00 pm (6:00 pm) / Hiroshima Club Quattro / Advance-¥5,000 At the door-¥6,000 / Now on sale / e+, Ticket PIA, Lawson, ①, Tower Records Hiroshima / Hiroshima Club Quattro 082-542-2280

★ **Hiroshima Symphony Orchestra: The 371st Subscription Concert**

(Mozart: Bassoon Concerto in B-flat major K. 191; Brahms: Variations on a Theme of Haydn Op. 56a; Dvořák: Symphony No. 7 in D minor Op. 70)

9th Fri. / 6:45 pm (5:45 pm) / Hiroshima Bunka Gakuen HBG Hall / S-¥5,200 A-¥4,700 B-¥4,200 Students-¥1,500 (Student tickets are only sold at the Hiroshima Symphony Orchestra Office.) / Now on sale / ①②③④⑤⑥⑦⑧, Lawson, Ticket PIA, Chugoku Shimbun & Hiroshima Symphony Orchestra Office / Hiroshima Symphony Orchestra Office 082-532-3080 E-mail: info@hirokkyo.or.jp

♪ Conductor: Robert Trevino
Bassoon: Sophie Dartigalongue

★ **Yasuko Otani Violin Concert**

9th Fri. / 6:45 pm (6:00 pm) / Nishi Kumin Bunka Center / Advance: Adults-¥4,000 Children & Seniors-¥3,000; At the door: Adults-¥4,500 Children & Seniors-¥3,500 / Now on sale / Kumin Bunka Centers, JMS Aster Plaza, Ticket offices in Hiroshima City / Nishi Kumin Bunka Center 082-234-1960 (closed on Mondays)

♪ Piano: Mami Hagiwara

★ **Violin & Viola Duo Concert**

10th Sat. / 4:00 pm (3:30 pm) / lifeone221 / Advance: Adults-¥3,000 High school students and under-¥2,000 Family pair tickets-¥4,500; At the door: Adults-¥3,500 High school students and under-¥2,500 Family pair tickets-¥5,500 / Please ask the concert organizer for ticket information. / lifeone music 082-922-0028 E-mail: lifeone@cyber.ocn.ne.jp

NEW!!

Please feel free to contact the International Exchange Lounge at 082-247-9715.

E-mail: golounge@pcf.city.hiroshima.jp

June 2017

NEW!!

★ **Crazy Classix presents: Hänsel and Gretel**

① 10th Sat. ② 11th Sun. / ① the 10th: 5:00 pm (4:30 pm) ② the 11th: 2:00 pm (1:30 pm) / JMS Aster Plaza / Adults-¥3,000 Students-¥2,000 / Now on sale / JMS Aster Plaza / Ogihara Music Office 082-962-8660 E-mail: info@crazy-classix.com

★ **Live Green 2017**

11th Sun. / 1:00 pm – 5:00 pm (noon) / Honganji Temple Hiroshima Betsuin / Advance-¥3,000 At the door-¥3,500 (all non-reserved seats) ✧ Free admission for one child (elementary school student and under) with his/her guardian (¥500 for each extra child) / Now on sale / Ticket PIA, Seven-Eleven, Lawson, ①⑥ / RCC 082-222-1133
 🎵 Live Act: Kazumi Nikaido with Gentle Forest Quintet, Kotoringo
 Thi is a music event held at a temple. A talk show, workshops, cafés & a marché (food market) will also be held. This is a rain-or-shine event.

★ **Masayuki Hirahara Piano Concert**

11th Sun. / 2:30 pm (2:00 pm) / Blue Live Hiroshima / ¥5,500 (all non-reserved seats) / Now on sale / Blue Live Ticket Center, Ticket PIA / Blue Live Hiroshima 082-250-5522

★ **Hiroshima Happy New Ear 23: Next Generation of Composers V**

16th Fri. / 7:00 pm (6:30 pm) / JMS Aster Plaza / Advance: Adults-¥2,500 Students-¥1,500; At the door: Adults-¥3,000 Students-¥2,000 (all non-reserved seats) / Now on sale / ①⑥, Ticket PIA, Lawson, JMS Aster Plaza, Chugoku Shimbun / Hiroshima Opera and Music Promotion Committee 082-244-8000

NEW!!

★ **Tierra Nueva: Andean Music Concert**

17th Sat. / 2:00 pm / Higashi Kumin Bunka Center / Free admission / Higashi Kumin Bunka Center 082-264-5551

★ **Promusica Mandolin Ensemble: The 38th Regular Concert**

17th Sat. / 6:00 pm (5:30 pm) / Hiroshima Kenmin Bunka Center / ¥500 / Please ask the concert organizer for ticket information. / 090-1356-3441, E-mail: yoshikitoshimasa@yahoo.co.jp (Yoshiki)

NEW!!

★ **Choir-Aru: The 31st Regular Concert**

17th Sat. / 6:30 pm (6:00 pm) / Hiroshima Kokusai Kaigijo (International Conference Center Hiroshima), Phoenix Hall / High school students and up-¥1,000 Junior high school students and under-Free / Now on sale / ① / 082-287-0380, E-mail: takemoto@hcat.ne.jp (Takemoto)

★ **The 38th Concert by Young Musicians**

18th Sun. / 1:30 pm – 5:00 pm (1:00 pm) / Higashi Kumin Bunka Center / Adults: Advance-¥1,000 At the door-¥1,200 High school students and under-Free / Now on sale / ①⑥⑦, JMS Aster Plaza, Kumin Bunka Centers / Hiroshima City Bunka Zaidan 082-244-0750

★ **Elisabeth University of Music Concert Series 2017-2018: Gala Concert**

23rd Fri. / 6:45 pm (6:00 pm) / Elisabeth University of Music, Cecilia Hall / Advance-¥2,000 At the door-¥2,500 / Now on sale / Ticket PIA, Elisabeth University of Music / Elisabeth University of Music 082-225-8004 E-mail: enso01@eum.ac.jp

NEW!!

★ **Masaki Ueno Birthday Concert**

24th Sat. / 6:30 pm / Higashi Kumin Bunka Center / Adults-¥3,000 Students-¥2,000 / Please ask the concert organizer for ticket information. / 090-5168-2848 (Ueno)
 🎵 This is a concert by Masaki Ueno, a violinist.

July

NEW!!

★ **Suina Selection: The 10th Regular Concert**

2nd Sun. / 2:00 pm (1:30 pm) / Asaminami Kumin Bunka Center / Free admission / Suina Selection 090-2002-1462, E-mail: suinaselection@gmail.com
 🎵 This is a brass band concert.

★ **Kiev Classic Ballet**

3rd Mon. / ① 4:00 pm (3:30 pm) ② 6:30 pm (6:00 pm) / Ueno Gakuen Hall / ¥3,800 / Now on sale / Lawson, e+, Ticket PIA, ①⑥ / TSS Office 082-253-1010 (Mon. – Fri., 10 am – 6 pm), CARAVAN 092-732-8858

★ **I Musici**

5th Wed. / 6:30 pm / Hiroshima Kokusai Kaigijo (International Conference Center Hiroshima), Phoenix Hall / S-¥8,000 A-¥6,000 / Now on sale / ①, e+, Lawson / Hiroshima TV Event Information Center 082-249-1218 (Mon. – Fri., 10am – 6pm)

★ **Hiroshima Symphony Orchestra: The 372nd Subscription Concert**

(Toshiro Mayuzumi: *Mandala Symphony*; Pauer: *Horn Concerto*; Schumann: *Symphony No. 2 in C major Op. 61*)
 7th Fri. / 6:45 pm (5:45 pm) / Hiroshima Bunka Gakuen HBG Hall / S-¥5,200 A-¥4,700 B-¥4,200 Students-¥1,500 (Student tickets are only sold at the Hiroshima Symphony Orchestra Office.) / Now on sale / ①②⑤⑥⑦⑧, Lawson, Ticket PIA, Chugoku Shimbun & Hiroshima Symphony

Please feel free to contact the International Exchange Lounge at 082-247-9715.

E-mail: golounge@pcf.city.hiroshima.jp

June 2017

Orchestra Office / Hiroshima Symphony Orchestra
Office 082-532-3080 E-mail: info@hirokyo.or.jp
♪ Conductor: Tatsuya Shimono / Horn: Radek Baborák

★ **Tsukemen Live 2017 ~ Recharge ~**

8th Sat. / 3:00 pm (2:30 pm) / Hiroshima Kokusai Kaigijo (International Conference Center Hiroshima), Phoenix Hall / ¥4,800 / Now on sale / ①, Lawson, Ticket PIA, e+ / UNION Music Office 082-247-6111

♪ Tsukemen is classical instrumental group consisting of two violins and one piano.

NEW!!

★ **The Royal Concert**

Johann Sebastian Bach: Die Kunst der Fuge BWV 1080 by a Violin and Three Viola da Gambas

14th Fri. / 7:00 pm (6:30 pm) / Hiroshima Nagarekawa Church / Advance-¥3,500 At the door-¥4,000 High school students and under-¥1,000 / Ticket reservations & Inquiries: Hiroshima Gamba Concert E-mail: peb00743@nifty.com, 082-923-8332 (Inohara), 090-3375-3640 (Nakano)

NEW!!

★ **Jazz Concert: Duo at Gewand Halle**

15th Sat. / 3:00 pm (2:00 pm) / Gewand Halle / Advance-¥6,000 At the door-¥6,500 / Now on sale / SUNTORY BAR MINT, Endo Wind Instrument Store / 090-9460-4307, E-mail: jazzduo@otakazutaka.com

★ **Tokyo Ska Paradise Orchestra: 2017 Tour "TOKYO SKA Has No Border"**

15th Sat. / 6:00 pm (5:00 pm) / Ueno Gakuen Hall / ¥6,200 / Now on sale / Lawson, Ticket PIA, e+, ① / Candy Promotion Hiroshima 082-249-8334

★ **Disney Live in Concert:**

Pirates of the Caribbean: The Curse of the Black Pearl – in concert live to film –

22nd Sat. / 6:00 pm (5:00 pm) / Ueno Gakuen Hall / S-¥8,300 A-¥7,300 Students (25 years old and under)-¥2,500 / Now on sale / Lawson, Ticket PIA, e+, ① / UNION Music Office 082-247-6111

★ **"Music Brings Peace" Concert**

23rd Sun. / 3:00 pm (2:00 pm) / Hiroshima Bunka Gakuen HBG Hall / ¥2,000 (all non-reserved seats) / Now on sale / ① / NPO Music Brings Peace 082-247-8604, E-mail: info@music-peace.jp

NEW!!



Please feel free to contact the International Exchange Lounge at 082-247-9715.

E-mail: golounge@pcf.city.hiroshima.jp

June 2017

★ **NHK Symphony Orchestra, Tokyo: Special Concert in Hatsukaichi**

23rd Sun. / 4:30 pm (4:00 pm) / Hatsukaichi Bunka Hall Sakurapia / SS-¥10,000 S-¥8,500 A-¥7,000 B-¥6,000 Students (B seats)-¥3,000 (Student tickets are only sold at the Sakurapia Office.) / Now on sale / ①, Ticket PIA, Lawson, Sakurapia, Chugoku Shimbun / Hatsukaichi Bunka Hall Sakurapia 0829-20-0111

♪ Conductor: Ken Takaseki

Violin: Nikita Briso-Glebsky

★ **El Camino Flamenco 2017**

29th Sat. / 5:00 pm (4:30 pm) / Hiroshima Kokusai Kaigijo (International Conference Center Hiroshima), Phoenix Hall / Advance-¥3,000 At the door-¥3,500 (all non-reserved seats) / Tickets & Inquiries: El Camino Flamenco Studio 082-241-7252 E-mail: elcamino@urban.ne.jp

★ **Hatsukaichi Peace Concert 2017**

30th Sun. / 1:30 pm – 3:30 pm (1:00 pm) / Hatsukaichi Bunka Hall Sakurapia / Free admission / Hatsukaichi City Kyouiku Inkai 0829-30-9203

★ **Hiroshima Symphony Orchestra: The 27th Regular Concert in Kure**

(Dvořák: Romance in F minor Op. 11 (B. 39); Martinů: Concerto for 2 Violins & Orchestra; Dvořák: Symphony No. 9 in E minor Op. 95 "From the New World")

30th Sun. / 2:30 pm (2:00 pm) / Kure City Bunka Hall / S-¥3,700 A-¥3,200 B- ¥2,700 Students-¥1,000 (Student tickets are only sold at the Hiroshima Symphony Orchestra Office.) / Now on sale / ①②⑤⑥, Chugoku Shimbun, Hiroshima Symphony Orchestra Office / Kure City Bunka Hall 0823-25-7878, Hiroshima Symphony Orchestra Office 082-532-3080

♪ Conductor: Masato Suzuki

Violin: Yosuke Kawasaki, Jessica Linnebach

August

NEW!!

★ **Joe Hisaishi & World Dream Orchestra 2017**

2nd Wed. / 7:00 pm (6:15 pm) / Ueno Gakuen Hall / S-¥8,900 A-¥8,400 / Now on sale / Lawson, Ticket PIA, e+ / Candy Promotion Hiroshima 082-249-8334

NEW!!

★ **Requiem in Hiroshima vol. 17**

11th Fri. / 4:30 pm (4:00 pm) / Nishi Kumin Bunka Center / Advance: Adults-¥2,500 Students-¥1,500; At the door: Adults-¥2,800 Students-¥1,800 / Now on sale / ① / 090-1014-8498 (Kobayashi)

★ **Hiroshima Symphony Orchestra:**
An Evening of Peace Concert stage 1
(R. Strauss: Tod und Verklärung Op. 24; Brahms: Piano Concerto No. 1 in D minor Op. 15)
 5th Sat. / 3:00 pm (2:00 pm) / Hiroshima Bunka Gakuen HBG Hall / S-¥5,000 A-¥4,000
 Students-¥2,000 (Student tickets are only sold at the Hiroshima Symphony Orchestra Office.) / From Mon., June 5 / ①②⑤⑥⑦⑧, Lawson, Ticket PIA, Chugoku Shimbun & Hiroshima Symphony Orchestra Office / Hiroshima Symphony Orchestra Office 082-532-3080 E-mail: info@hirokkyo.or.jp
 ♪ Conductor: Tatsuya Shimono
 Piano: Peter Serkin

★ **Erth's Dinosaur Zoo**
 15th Tue. / ① 1:00 pm – 2:00 pm (12:30 pm)
 ② 3:30 pm – 4:30 pm (3:00 pm) / Hiroshima Bunka Gakuen HBG Hall / ¥3,000 / Now on sale / Lawson, Ticket PIA, e+, ①⑥ / Candy Promotion Hiroshima 082-249-8334

★ **“PO” Fusion Concert**
 28th Mon. / 7:30 pm (7:00 pm) / Live Juke / Advance: Adults-¥3,500 Students-¥2,000; At the door: Adults-¥4,000 Students-¥2,500 / Ticket reservations & Inquiries: “PO” Executive Committee 090-8717-7639 (Uchida), E-mail: quintettheburoly@yahoo.co.jp
 ♪ Special guest: Akira Onozuka, a keyboardist.

★ **Adrien Moignard Japan Tour in Hiroshima 2017**
 30th Wed. / 7:30 pm (7:15 pm) / Live Juke / Advance-¥5,000 At the door-¥5,500 / From Thurs., June 1 / Ticket reservation (online): <http://manouche.hy-creative.com/adrien-moignard/> / Live Juke 082-249-1930
 ♪ This is a jazz concert

★ **Ventures Japan Tour 2017**
 31st Thurs. / 6:30 pm (6:00 pm) / JMS Aster Plaza / ¥6,000 / Now on sale / ①⑥, Lawson, Ticket PIA, e+ / Candy Promotion Hiroshima 082-249-8334

September

★ **Hiroshima Symphony Orchestra:**
The 373rd Subscription Concert
(R. Strauss: Symphonic Fragment from Josephslegende TrV231a; Beethoven: Symphony No. 3 in E-flat major Op. 55 “Eroica”)
 8th Fri. / 6:45 pm (5:45 pm) / Hiroshima Bunka Gakuen HBG Hall / S-¥5,200 A-¥4,700 B-¥4,200 Students-¥1,500 (Student tickets are only sold at the Hiroshima Symphony Orchestra Office.) /

From Sat., July 8 (from Mon., July 10 at the Hiroshima Symphony Orchestra Office) / ①②⑤⑥⑦⑧, Lawson, Ticket PIA, Chugoku Shimbun & Hiroshima Symphony Orchestra Office / Hiroshima Symphony Orchestra Office 082-532-3080 E-mail: info@hirokkyo.or.jp
 ♪ Conductor: Christian Arming

★ **Shochiku Kabuki**
 9th Sat. / ① Noon (11:30 am) ② 4:30 pm (4:00 pm) / Kure City Bunka Hall / S-¥6,200 A-¥4,200 B-¥3,100 Students (those who are 27 years old and under)-¥1,080 (Student tickets are only sold at Kure City Bunka Hall, Ticket PIA, Lawson, Seven-Eleven. Student ID will be required at the entrance on the performance day.) / From Sat., June 10 / ①⑥, Ticket PIA, Lawson, Seven-Eleven / Kure City Bunka Hall 0823-25-7878
 ♪ This is a traditional Japanese performing art.

★ **Teiko Maehashi Violin Recital**
 10th Sun. / 2:00 pm (1:30 pm) / Hatsukaichi Bunka Hall Sakurapia / ¥3,800 / Now on sale / ①⑥⑦, Lawson, Ticket PIA, e+, Sakurapia / Hatsukaichi Bunka Hall Sakurapia 0829-20-0111 (9 am – 7 pm, closed on Mondays)

★ **Hiroshima Symphony Orchestra, Discovery Series: Dämmerung in Wien**
(Suppé: Banditenstreiche, Overture; Schönberg: Chamber Symphony No. 2 Op. 38; Schubert: Symphony No. 2 in B-flat major D125)
 14th Thurs. / 6:45 pm (5:45 pm) / JMS Aster Plaza / S-¥5,200 A-¥4,200 B- ¥3,200 Students-¥1,000 (Student tickets are only sold at the Hiroshima Symphony Orchestra Office.) / From Fri., July 14 / ①②⑤⑥⑦⑧, Lawson, Ticket PIA, Chugoku Shimbun, JMS Aster Plaza & Hiroshima Symphony Orchestra Office / Hiroshima Symphony Orchestra Office 082-532-3080 E-mail: info@hirokkyo.or.jp
 ♪ Conductor: Tatsuya Shimono

★ **The Phantom of the Opera by Gekidan Shiki**
 Sept. 14 – Nov. 5 / Ueno Gakuen Hall / S-¥10,800 A-¥8,640 B-¥6,480 C-¥3,240 / From Sun., June 11 / Please check the Gekidan Shiki's website about time schedule and ticket information: <https://www.shiki.jp/applause/operaza/> / Gekidan Shiki Hiroshima Office 082-503-3411 (Mon. – Sat. except national holidays)
 ♪ Gekidan Shiki (Shiki Theatre Company) is one of the famous theater companies in Japan.
 This musical will be played in Japanese.



Please feel free to contact the International Exchange Lounge at 082-247-9715.
 E-mail: golounge@pcf.city.hiroshima.jp

June 2017

NEW!!

★ **Jake Shimabukuro Japan Tour**

30th Sat. / 5:00 pm (4:00 pm) / Hiroshima Club Quattro / ¥7,300 / Now on sale / e+, Ticket PIA, Lawson, ① / Yumebanchi Hiroshima 082-249-3571

♪ Jake Shimabukuro is a ukulele player from Hawaii.

★ **Kodo "Dadan"**

28th Sat. / 2:00 pm (1:30 pm) / Hatsukaichi Bunka Hall Sakurapia / Adults-¥6,000 U-25 (tickets for those who are 25 years old and under)-¥4,000 / From Sat., June 24 / Sakurapia, ①⑥⑦, e+, Seven-Eleven / TSS 082-253-1010 (Mon. – Fri., 10 am – 6 pm)

♪ This is a *taiko*, traditional Japanese drum performance.

NEW!!

★ **Hiroshima Oepra Renaissance: Così fan Tutte (by W. A. Mozart)**

① Sat., Sept. 30 ② Sun., Oct. 1 / 2:00 pm / JMS Aster Plaza / SS-¥8,000 S-¥6,500 A-¥5,000 B-¥3,500 Students-¥2,000 ✧ Student tickets are only sold at the door. / From Sat., July 1 / Please ask the concert organizer for ticket office information. / Hiroshima Opera and Music Promotion Committee 082-244-8000

♪ This will be played in Italian with Japanese subtitles.

October

NEW!!

★ **Paul Mauriat Remember Concert**

3rd Tue. / 2:00 pm (1:30 pm) / Hatsukaichi Bunka Hall Sakurapia / SS-¥9,800 S-¥8,800 A-¥7,800 U-22 (tickets for those who are 22 years old and under)-¥2,200 / From Sun., June 11 / Ticket PIA, Lawson, ①, Sakurapia, Chugoku Shimbun / Hatsukaichi Bunka Hall Sakurapia 0829-20-0111

NEW!!

★ **Night Ranger Japan Tour**

4th Wed. / 7:00 pm (6:00 pm) / Hiroshima Club Quattro / ¥9,000 / From Sat., June 10 / e+, Ticket PIA, Lawson, ①, Tower Records Hiroshima, Hiroshima Club Quattro / Hiroshima Club Quattro 082-542-2280

NEW!!

★ **Hiroshima Symphony Orchestra: The 374th Subscription Concert**

(*Ikuma Dan: Orchestra Fantasy "Flying Devi"; Berg: Violin Concerto (To the Memory of an Angel); Schumann: Symphony No. 3 in E-flat major Op. 97 "Rhenish"*)

27th Fri. / 6:45 pm (5:45 pm) / Hiroshima Bunka Gakuen HBG Hall / S-¥5,200 A-¥4,700 B-¥4,200 Students-¥1,500 (Student tickets are only sold at the Hiroshima Symphony Orchestra Office.) / From Sun., August 27 (from Mon., August 28 at the Hiroshima Symphony Orchestra Office) / ①②③④⑤⑥⑦⑧, Lawson, Ticket PIA, Chugoku Shimbun & Hiroshima Symphony Orchestra Office / Hiroshima Symphony Orchestra Office 082-532-3080 E-mail: info@hirokyo.or.jp

♪ Conductor: Tatsuya Shimono
Violin: Serge Zimmermann



Please feel free to contact the International Exchange Lounge at 082-247-9715.

E-mail: golounge@pcf.city.hiroshima.jp

June 2017

Event Halls

◆ Hiroshima Bunka Gakuen HBG Hall 広島文化学園 HBG ホール

(3-3 Kako-machi, Naka-ku, Hiroshima Tel. 082-243-8881)

- Take the No.24 bus bound for Yoshijima Eigyocho (吉島営業所) and get off at Kako-machi (加古町). Walking time to destination: 2 minutes

◆ Hiroshima Kenmin Bunka Center 広島県民文化センター

(1-5-3 Ote-machi, Naka-ku, Hiroshima Tel. 082-245-2311)

- Take a streetcar or a bus and get off at Hondori (本通) or Kamiya-cho (紙屋町). Walking time to destination: 5 minutes

◆ JMS Aster Plaza JMS アステールプラザ

(4-17 Kako-machi, Naka-ku, Hiroshima Tel. 082-244-8000)

- Take the No.24 bus bound for Yoshijima Eigyocho (吉島営業所) and get off at Kako-machi (加古町). Walking time to destination: 2 minutes

◆ Ueno Gakuen Hall 上野学園ホール

(19-1 Hakushima-kita-machi, Naka-ku, Hiroshima Tel. 082-223-6367)

- Take the Astramline bound for Koiki Koen-mae (広域公園前) or Chorakuji (長楽寺) Station and get off at Hakushima (白島) Station. Walking time to destination: 3 minutes

◆ Hiroshima Kokusai Kaigijo (International Conference Center Hiroshima), Phoenix Hall

広島国際会議場フェニックスホール

(1-5 Nakajima-cho, Naka-ku, Hiroshima Tel. 082-242-7777)

- Get on a Hiroshima Bus bound for Yoshijima and get off at Heiwa Kinenkoen (平和記念公園).
- Get off at the Chuden-mae (中電前) or Genbaku Dome-mae (原爆ドーム前) Streetcar Stops. Walking time to destination: 5 minutes

◆ Hiroshima Club Quattro 広島クラブクアトロ

(10-1 Hondori, Naka-ku, Hiroshima (Hiroshima PARCO Hon-kan 10F) Tel. 082-542-2280)

- Take a streetcar and get off at Hatchobori (八丁堀). Walking time to destination: 5 minutes

◆ Hiroshima Green Arena 広島グリーンアリーナ

(4-1 Moto-machi, Naka-ku, Hiroshima Tel. 082-228-1111)

- Take a streetcar and get off at Kamiya-cho-nishi (紙屋町西) or Kamiya-cho-higashi (紙屋町東). Walking time to destination: 5 minutes

◆ Hiroshima Sun Plaza 広島サンプラザ

(3-1-1 Shoko Center, Nishi-ku, Hiroshima Tel. 082-278-5000)

- Take a train or streetcar to Miyajima and get off at JR Shin-inokuchi (新井口) Station (JR Sanyo Line) or Shoko Center-iriguchi (商工センター入り口) Streetcar Stops (Hiroden Miyajima Line). Walking time to destination: 5 minutes

◆ Elisabeth University of Music エリザベト音楽大学

(4-15 Nobori-machi, Naka-ku, Hiroshima Tel. 082-221-0918)

- Take a streetcar and get off at Kanayama-cho (銀山町) or Jogakuin-mae (女学院前). Walking time to destination: 10 minutes

◆ Higashi Kumin Bunka Center 東区民文化センター

(10-31 Higashi-kaniya-cho, Higashi-ku, Hiroshima Tel. 082-264-5551)

- From the Shinkansen Exit of the JR Hiroshima (広島) Station, walking time to destination is 10 minutes.

Please feel free to contact the International Exchange Lounge at 082-247-9715.

E-mail: golounge@pcf.city.hiroshima.jp

June 2017

◆ **Nishi Kumin Bunka Center** 西区民文化センター

(6-1 Yokogawa Shin-machi, Nishi-ku, Hiroshima Tel. 082-234-1960)

➤ From JR Yokogawa (横川) Station, walking time to destination is 5 minutes.

◆ **Asaminami Kumin Bunka Center** 安佐南区民文化センター

(22-17 Nakasuji 1-chome, Asaminami-ku, Hiroshima Tel. 082-879-3060)

➤ From *Astramline* Nakasuji (中筋) Station, walking time to destination is 5 minutes.

◆ **Saeki Kumin Bunka Center** 佐伯区民文化センター

(6-1-10 Itsukaichi-chuo, Saeki-ku, Hiroshima Tel. 082-921-7550)

➤ From Hiroshima Bus Center (*Sogo* Hiroshima, 3F), take a bus to Yakushigaoka-danchi (薬師が丘団地), Shikigaoka-danchi (四季が丘団地), Higashi-kannondai-danchi (東観音台団地) or Ajinadai-kita (阿品台北) and get off at Saeki-kumin Bunka Center-mae (佐伯区民文化センター前). Walking time to destination: 1 minutes

◆ **Aki Kumin Bunka Center** 安芸区民文化センター

(2-16 Funakoshi-minami 3-chome, Aki-ku, Hiroshima Tel. 082-824-1330)

➤ From JR Kaitaichi (海田市) Station (JR Sanyo Line), walking time to destination is 5 minutes.

◆ **Blue Live Hiroshima** ブルーライブ広島

(3-12-69 Ujina Kaigan, Minami-ku, Hiroshima Tel. 082-250-5522)

➤ Take a streetcar for Hiroshima-ko (No. 1, 3 or 5) and get off at Kaigan-dori (海岸通). Walking time to destination: 5 minutes

◆ **Live Juke** ライブジューク

(Crystal Plaza 19F, Naka-machi, Naka-ku, Hiroshima Tel. 082-567-5011)

➤ From Takanobashi (鷹野橋) or Nisseki Byouin-mae (日赤病院前) Streetcar Stops, walking time to destination is 7 minutes

◆ **lifeone221 hall** lifeone221 ホール

(2-2-1 Itsukaichi-chuo, Saeki-ku, Hiroshima-shi Tel. 082-922-0028)

➤ Take a bus from JR Itsukaichi (五日市) Station (north exit) and get off at Itsukaichi-chuo 2-chome (五日市中央二丁目). Walking time to destination: 5 minutes.

◆ **Hiroshima Nagarekawa Church** 広島流川協会

(8-30 Kami-nobori-cho, Naka-ku, Hiroshima Tel. 082-221-1813)

➤ From Jogakuin-mae (女学院前) or Shukkeien-mae (縮景園前) Streetcar Stop, walking time to destination is 5 minutes.

◆ **Jodoshinshu Honganji-ha Hiroshima Betsuin** 浄土真宗本願寺派広島別院

(1-19 Tera-machi, Naka-ku, Hiroshima Tel. 082-231-0302)

➤ Get off at Betsuin-mae (別院前) Streetcar Stop.

◆ **Hatsukaichi Bunka Hall Sakurapia** はつかいち文化ホールさくらびあ

(1-11-1 Shimo-hera, Hatsukaichi City Tel. 0829-20-0111)

➤ Take a train on the JR Sanyo Line bound for Iwakuni and get off at JR Miyauchi Kushido (宮内串戸) Station. Walking time to destination: 15 minutes

➤ Take a streetcar on the Hiroden Miyajima Line and get off at Hatsukaichi Shiyakusho-mae (廿日市役所前). Walking time to destination: 8 minutes

◆ **Kure City Bunka Hall** 呉市文化ホール

(3-10-1 Chuo, Kure City Tel. 0823-25-7878)

➤ From JR Kure (呉) Station (JR Kure Line), walking time to destination is 7 minutes.



Please feel free to contact the International Exchange Lounge at 082-247-9715.

E-mail: golounge@pcf.city.hiroshima.jp

June 2017



A: Adults U: University Students H: High School Students
 J: Junior High School Students E: Elementary School Students
 S: Seniors (65 years old and up - Identification showing your date of birth is required.)

◆ Generally, admission is allowed up to 30 min. prior to closing. ◆

Hiroshima Museum of Art

Address: 3-2 Moto-machi, Naka-ku, Hiroshima City
 Tel: 082-223-2530
 Hours: 9:00 am – 5:00 pm
 Closed: Mondays (except during special exhibitions)
 URL: <http://www.hiroshima-museum.jp>

Special Exhibition

■ Akiko Hayashi's Picture Book Illustrations

Period: Sat., Jul. 15 – Sun., Aug. 27

Admission Fee:

A -¥1,200 (¥1,000), S-¥1,000,
 U&H-¥900 (¥700), J&E-¥500 (¥300)

◇ Advance ticket prices shown in ().

Collection Exhibition

■ Modern European Paintings

Period: Year-round

Hiroshima City Museum of Contemporary Art

Address: 1-1 Hijiyama Koen, Minami-ku, Hiroshima City
 Tel: 082-264-1121
 Hours: 10:00 am – 5:00 pm
 Closed: Mondays (except national holiday)
 URL: <http://www.hcmca.cf.city.hiroshima.jp/>

Special Exhibition

■ The Prolific World of TOGO MURANO: From the Memorial Cathedral for World Peace

Period: Tue., May 16 – Sun., Jul. 9

Admission Fee:

A-¥1,030 (¥820), U-¥720 (¥620),
 S&H-¥510 (¥410), J & under-Free

◇ Advance ticket prices shown in ().

Collection Exhibition

Admission Fee: A-¥360 / U-¥270 / S&H-¥170
 / J & under- Free

Holders of special exhibition admission tickets are also entitled to view the collection exhibition.

■ 2017 – 2:

Collection Highlights & Special Feature: "Forms of Light / Scenes of Light"

Period: Sat., Jun. 3 – Sun., Sept. 10

Video Art Program (Free admission)

■ A Window to the World [The 56th Program]:

Luis Corzo

Period: Tue., May 30 – Thurs., Jul. 27

Hiroshima MOCA Monthly Workshop

✍ This is an art program in which the museum selects one particular material and visitors are free to make anything with it.

Reservations are not required. You can join the workshop on the event day of.

Date: Sun., Jun. 25 & Jul. 23

Time: ① 10:00 am – noon

② 2:00 pm – 4:00 pm

Participation Fee: Free

Hiroshima Prefectural Art Museum

Address: 2-22 Kaminobori-cho, Naka-ku,
 Hiroshima City
 Tel: 082-221-6246
 Hours: 9:00 am – 5:00 pm
 ◇ Open until 8:00 pm on Fridays (Apr. – Oct.)
 ◇ Open until 7:00 pm on Fridays (Nov. – Mar.)
 Closed: June 5, 12 & 19
 URL: <http://www.hpam.jp/>

Special Exhibitions

■ The 5th NEW KENBITEN: Annual Competition of Art in Hiroshima Prefecture

Period: Sat., Jun. 24 – Sun., Jul. 9

Admission Fee:

A-¥510 (¥410), U&H-¥310 (¥250),
 J&E-¥100 (¥80)

◇ Advance ticket prices shown in ().

☺ KENBITEN is the publicly sponsored exhibition encouraging the prefectural citizens' creative activities as well as providing opportunities for application.



Please feel free to contact the International Exchange Lounge at 082-247-9715.

E-mail: golounge@pcf.city.hiroshima.jp

June 2017

■ **The Shaun the Sheep Exhibition:
An Aardman Animations 40th Anniversary
Event**

Period: Sat., Jul. 15 – Sun., Aug. 27

Admission Fee:

A-¥1,200 (¥1,000), U&H-¥1,000 (¥800),
J&E-¥600 (¥400)

✧ Advance ticket prices shown in ()

Collection Exhibition

Admission Fee (all exhibitions):

A-¥510, U-¥310, H & under-Free

Holders of special exhibition admission tickets
are also entitled to view the Museum's Collection
exhibits.

■ **Wasaku Kobayashi Collection: Landscape
Paintings Rich with Natural Beauty**

Period: Wed., Apr. 19 – Sun., Jul. 2

■ **Summer Museum: Searching for Animals**

Period: Wed., Jul. 5 – Sun., Sept. 10

Kure Municipal Museum of Art

Address: Irifuneyama Koen, Saiwai-cho, Kure City
Tel: 0823-25-2007

Hours: 10:00 am – 5:00 pm

Closed: Tuesdays (except national holidays)

URL: <http://kure-bi.jp/>

Collection Exhibition

■ **Stories of Pictures**

Period: Fri., Apr. 14 – Sun., Jun. 18

Admission Fee: A&U-¥300, H-¥180,
J&E-¥120

Fukuyama Museum of Art

Address: 2-4-3 Nishi-machi, Fukuyama City
Tel: 084-932-2345

Hours: 9:30 am – 5:00 pm

Open until 7:00 pm on June 2, 3, 9 & 10

Closed: Mondays (except May 1)

HP: [http://www.city.fukuyama.hiroshima.jp/
site/fukuyama-museum/](http://www.city.fukuyama.hiroshima.jp/site/fukuyama-museum/)

Special Exhibition

■ **Kishin Shinoyama Photo Exhibition:
THE PEOPLE by KISHIN**

Period: Sat., Apr. 8 – Sun., Jun. 11

Admission Fee: A&U-¥1,000, H & under-Free

☺ Kishin Shinoyama is a famous Japanese
photographer.

Collection Exhibition

Admission Fee (all exhibitions):

A&U-¥300, H & under-Free

■ **Spring Exhibition
Seasonal Flowers in Art**

Period: Wed., Apr. 5 – Sun., Jun. 25

Admission Fee: A&U-¥300, H & under-Free

Onomichi City Museum of Art

Address: 17-19 Nishitsuchido-cho, Onomichi City
(Inside Senkoji Park)

Tel: 0848-23-2281

Hours: 9:00 am – 5:00 pm

Closed: Mondays except national holidays

Special Exhibition

■ **The 61st Onomichi Citizens' Art
Exhibition**

Period: Sat., May 27 – Sun., Jun. 18

① May 27 – Jun. 4: Japanese-style paintings,
sculptures & calligraphies

② Jun. 10 – 18: Western-style paintings,
photographs, crafts & designs

Admission Fee: Free

Okuda Genso Sayume Art Museum

Address: 453-6 Higashi Sakeya-machi, Miyoshi City
Tel: 0824-65-0010

Hours: 9:30 am – 5:00 pm

Open until 9:00 pm on June 9

Closed: June 14

URL: <http://www.genso-sayume.jp>

Special Exhibition

■ **Obake Ukiyo-e (Scary Pictures of Ukiyo-e)**

Period: Mon., Apr. 24 – Sun., Jun. 11

Admission Fee:

A-¥1,000 (900), Tickets for couple- ¥1,800

U&H-¥500 (¥400), J & under-Free

✧ Advance ticket prices shown in ().

Hatsukaichi Art Gallery

Address: 1-11-1 Shimohera, Hatsukaichi City
(inside Hatsukaichi Bunka Hall Sakurapia)

Tel: 0829-20-0222

Hours: 10:00 am – 6:00 pm

Closed: Mondays except national holidays

Special Exhibition

■ **"Bi no Tsubo": Japanese Modernism**

Period: Fri., Jun. 16 – Sun., Jul. 23

✧ Jazz concert as an opening event will
be held on June 18, so the gallery will
open at 4:30 pm on this day.

Admission Fee: A-¥800, U-¥700,
H & under-Free

Please feel free to contact the International Exchange Lounge at 082-247-9715.

E-mail: golounge@pcf.city.hiroshima.jp

June 2017

Fukuya Department Store (Hiroshima Eki-mae)

Address: 9-1 Matsubara-cho, Minami-ku, Hiroshima City

Tel: 082-568-3111

Hours: 10:00 am – 8:00 pm

URL: <http://www.fukuya-dept.co.jp/>

Special Exhibition

■ Disney's Princesses

Period: Fri., Aug. 11 – Tue., Aug. 29

Admission Fee:

A-¥1,500 (¥1,300)

U&H-¥1,200 (¥1,000)

4 years old – Junior high school students
-¥800 (¥700)

3 years old & under-Free

◇ Advance ticket prices shown in ().

◇ Advance ticket will be sold from May 13 at
major ticket offices in Hiroshima City.



Please feel free to contact the International Exchange Lounge at 082-247-9715.

E-mail: golounge@pcf.city.hiroshima.jp

June 2017

Hiroshima Toyo Carp Schedule 2017

The Toyo Carp (Hiroshima's professional baseball team) plays about 60 games at the MAZDA Zoom-Zoom Stadium Hiroshima every year.

GAME SCHEDULE

JUNE

Fri, 2nd, 6:00 pm / vs. Chiba Lotte Marines
 Sat, 3rd, 2:00 pm / vs. Chiba Lotte Marines
 Sun., 4th, 1:30 pm / vs. Chiba Lotte Marines
 Wed., 14th, 6:00 pm / vs. Orix Buffaloes
 Thurs., 15th, 6:00 pm / vs. Orix Buffaloes
 Fri, 16th, 6:00 pm / vs. Fukuoka SoftBank Hawks
 Sat, 17th, 2:00 pm / vs. Fukuoka SoftBank Hawks
 Sun., 18th, 1:30 pm / vs. Fukuoka SoftBank Hawks
 Fri, 23rd, 6:00 pm / vs. Hanshin Tigers
 Sat, 24th, 2:00 pm / vs. Hanshin Tigers
 Sun., 25th, 1:30 pm / vs. Hanshin Tigers
 Fri, 30th, 6:00 pm / vs. Chunichi Dragons

AUGUST

Tue., 1st, 6:00 pm / vs. Hanshin Tigers
 Wed., 2nd, 6:00 pm / vs. Hanshin Tigers
 Thurs., 3rd, 6:00 pm / vs. Hanshin Tigers
 Fri, 11th, 6:00 pm / vs. Yomiuri Giants
 Sat, 12th, 6:00 pm / vs. Yomiuri Giants
 Sun., 13th, 6:00 pm / vs. Yomiuri Giants
 Fri, 18th, 6:00 pm / vs. Tokyo Yakult Swallows
 Sat, 19th, 6:00 pm / vs. Tokyo Yakult Swallows
 Sun., 20th, 6:00 pm / vs. Tokyo Yakult Swallows
 Fri, 25th, 6:00 pm / vs. Chunichi Dragons
 Sat, 26th, 6:00 pm / vs. Chunichi Dragons
 Sun., 27th, 6:00 pm / vs. Chunichi Dragons

JULY

Sat, 1st, 2:00 pm / vs. Chunichi Dragons
 Sun., 2nd, 1:30 pm / vs. Chunichi Dragons
 Tue., 4th, 6:00 pm / vs. Yomiuri Giants
 Wed., 5th, 6:00 pm / vs. Yomiuri Giants
 Thurs., 6th, 6:00 pm / vs. Yomiuri Giants
 Mon., 10th, 6:00 pm / vs. Yokohama DeNA Baystars
 Tue., 11th, 6:00 pm / vs. Yokohama DeNA Baystars
 Wed., 12th, 6:00 pm / vs. Yokohama DeNA Baystars
 Fri, 21st, 6:00 pm / vs. Chunichi Dragons
 Sat, 22nd, 6:00 pm / vs. Chunichi Dragons
 Fri, 28th, 6:00 pm / vs. Tokyo Yakult Swallows
 Sat, 29th, 6:00 pm / vs. Tokyo Yakult Swallows
 Sun., 30th, 6:00 pm / vs. Tokyo Yakult Swallows

SEPTEMBER

Tue., 5th, 6:00 pm / vs. Hanshin Tigers
 Wed., 6th, 6:00 pm / vs. Hanshin Tigers
 Thurs., 7th, 6:00 pm / vs. Hanshin Tigers
 Tue., 12th, 6:00 pm / vs. Yokohama DeNA Baystars
 Wed., 13th, 6:00 pm / vs. Yokohama DeNA Baystars
 Thurs., 14th, 6:00 pm / vs. Yokohama DeNA Baystars
 Sat, 16th, 2:00 pm / vs. Tokyo Yakult Swallows
 Sun., 17th, 1:30 pm / vs. Tokyo Yakult Swallows
 Fri, 22nd, 6:00 pm / vs. Yomiuri Giants
 Sat, 23rd, 1:30 pm / vs. Yomiuri Giants

TICKET OFFICES

◆ MAZDA Zoom-Zoom Stadium Hiroshima

Tickets can be purchased at the ticket booths at the entrances of the stadium (closed on August 6).

Booth Opening Times

11:30am (days with night games) / 11:00am (days with day games)

11:00am – 4:00pm (days when there are no games)

◆ CARPIO (6-7 Hacho-bori, Naka-ku)

OPEN: 10:00am – 4:00pm

CLOSED: No fixed times

TEL: 227-2222

◆ Convenience Stores

Tickets are available at convenience stores such as Lawson, Seven-Eleven, FamilyMart and Sunkus.



ACCESS

MAZDA Zoom-Zoom Stadium Hiroshima:

From JR Hiroshima Station, walking time to the stadium is 10 minutes.

INQUIRIES

Hiroshima Toyo CARP

Tel (082) 223-2141 Fax (082) 502-1189

URL: www.carp.co.jp/

Please feel free to contact the International Exchange Lounge at 082-247-9715.

E-mail: golounge@pcf.city.hiroshima.jp

June 2017

Sanfrecce Hiroshima FC Schedule 2017

GAME SCHEDULE Date / Kick Off / Game / Venue / Ticket Sales

2017 J League

Sun., June 4 / 2:00pm / vs. Kashima Antlers / EDION Stadium Hiroshima / Now on sale
 Sun., June 25 / 6:30pm / vs. Omiya Aldija / EDION Stadium Hiroshima / Now on sale
 Sun., July 30 / 6:30pm / vs. Sagantosu / EDION Stadium Hiroshima / From Sat., June 3
 Wed., August 9 / 7:00pm / vs. Gamba Osaka / EDION Stadium Hiroshima / From Sat., July 1
 Sat., August 19 or Sun., August 20 / Not finalized / vs. Ventforet Kofu / EDION Stadium Hiroshima / Mid-July
 Sat., September 16 or Sun., September 17 / Not finalized / vs. Cerezo Osaka / EDION Stadium Hiroshima / From Sat., August 5
 Sat., September 30 or Sun., October 1 / Not finalized / vs. Hokkaido Consadole Sapporo / EDION Stadium Hiroshima / From Sat., August 5
 Sat., October 21 or Sun., October 22 / Not finalized / vs. Kawasaki Frontale / EDION Stadium Hiroshima / Not finalized
 Sun., October 29 / Not finalized / vs. Urawa Red Diamonds / EDION Stadium Hiroshima / From Sat., September 2
 Sun., November 26 / Not finalized / vs. F. C. Tokyo / EDION Stadium Hiroshima / From Sat., October 7

TICKETS Seats / Advance Tickets / At the Door

- ◆ Reserved Seats SS / ¥5,300 / ¥5,900 ◆ Reserved Seats SA / ¥3,700 / ¥4,300
- ◆ Unreserved Seats for Adults / ¥2,600 / ¥3,200
- ◆ Unreserved Seats for Students (High School Students and under) / ¥1,000 / ¥1,500

ACCESS

◆ EDION Stadium Hiroshima (Hiroshima Big Arch)

Take the *Astramline* bound for *Koiki-koen-mae* (広域公園前) and get off at the last station, *Koiki-koen-mae* (広域公園前).

From *Hondori* Station: One way fare - ¥480 Travel time - 35 min.

TICKET OFFICES

- ◆ Sanfrecce Hiroshima Official Shop V-POINT (EDION *Honkan*, 8F / Tel. 248-3317 / 10:00am – 8:00pm / Closed on Mondays except national holidays)
- ◆ EDION Play Guide (*Honkan*, 8F) ◆ Fukuya (Hiroshima Station) (7F) ◆ Alpark Tenmaya (3F)
- ◆ Convenience Stores (FamilyMart, Seven Eleven, CircleKSunkus and Lawson)

INQUIRIES

Sanfrecce HIROSHIMA Tel. 233-3233 URL: www.sanfrecce.co.jp





Please feel free to contact the International Exchange Lounge at 082-247-9715.

E-mail: golounge@pcf.city.hiroshima.jp

June 2017

Swimming Pool Information

-  **Swimming caps are required.**
-  **Swimming pools may be closed temporarily due to maintenance in addition to the regular closed days. Please inquire at each facility in advance.**

[NOTES]

- ◆ **Seniors = 65years and up** ✧ Identification showing your date of birth is required.
- ◆ **Children = Senior high, junior high & elementary school students**

Hiroshima Prefectural Sports Center

ひろしまけんりつそうごうたいいくかん
広島県立総合体育館

ADDRESS: 4-1 Moto-machi, Naka-ku, Hiroshima City

ACCESS: From Kamiya-cho-nishi Streetcar Stop, walking time to destination is 5 minutes.

OPEN HOURS: 9:00am – 9:00pm ✧ Entrance allowed up to 8:00pm.

CLOSED: December 29 – January 3

FEE: Adults – ¥620 Children – ¥310

POOL: Seven 25-meter lanes (2.0 – 2.3 meters deep)

INQUIRIES: 082-502-0073



Yoshijima Indoor Pool

よしじまおくない
吉島屋内プール

ADDRESS: 1-53 Konan 5-chome, Naka-ku, Hiroshima City

ACCESS: Take the No.24 bus bound for Yoshijima Eigyosho and get off at Hiroshima Bus Kanko Shako-mae. Walking time to destination: 7 minutes

OPEN HOURS: 9:00am – 9:00pm (October – June) / 8:30am – 9:30pm (July – September)

CLOSED: Wednesdays (except on national holidays), August 6 and December 29 – January 3

FEE: Adults – ¥490 Seniors & Children – ¥240

POOL: Six 25-meter lanes (1.2 – 1.4 meters deep)

INQUIRIES: 082-249-8591

Hiroshima Big Wave

ひろしんビッグウェーブ (総合おくない プール)

ADDRESS: 8-3 Ushita-shin-machi 1-chome, Higashi-ku, Hiroshima City

ACCESS: From the Astramline Ushita Station, walking time to destination is 3 minutes.

OPEN HOURS: 9:00am – 9:00pm (October – June) / 8:30am – 9:30pm (July – September)

✧ Swimming pool opens from June to September.

CLOSED: Tuesdays (except on national holidays), August 6 and December 30 – January 1

FEE: Adults – ¥540 Seniors & Children – ¥260

POOL: Ten 50-meter lanes, sixteen 25-meter lanes (2.0 – 2.2 meters deep)

INQUIRIES: 082-222-1860

MAEDAHOSING Higashi-ku Sports Center

マエダハウジング 東区 スポーツセンター

ADDRESS: 8-3 Ushita-shin-machi 1-chome, Higashi-ku, Hiroshima City

ACCESS: From the Astramline Ushita Station, walking time to destination is 3 minutes.

OPEN HOURS: 9:00am – 9:00pm (October – June) / 8:30am – 9:30pm (July – September)

CLOSED: Tuesdays (except on national holidays), August 6 and December 29 – January 3

FEE: Adults – ¥490 Seniors & Children – ¥240

POOL: Six 25-meter lanes (1.2 – 1.4 meters deep) and a small-sized pool (4m×9m, 0.6m deep)

INQUIRIES: 082-222-1860

Please feel free to contact the International Exchange Lounge at 082-247-9715.

E-mail: golounge@pcf.city.hiroshima.jp

June 2017

Shinonome Indoor Poolしのめおくない
東雲 屋内 プール**ADDRESS:** 16-3 Shinonome 3-chome, Minami-ku, Hiroshima City**ACCESS:** ① From JR Mukainada Station (JR Sanyo Line), walking time to destination is 15 minutes.

② Take the No.7 bus bound for Niho-shako and get off at Shinonome-cho. Walking time to destination: 5 minutes

OPEN HOURS: 9:00am – 9:00pm (October – June) / 8:30am – 9:30pm (July – September)**CLOSED:** Tuesdays (except on national holidays), August 6 and December 29 – January 3**FEE:** Adults – ¥490 Seniors & Children – ¥240**POOL:** Six 25-meter lanes (1.2 – 1.4 meters deep) and a small-sized pool (6m×6.75m, 0.6m deep)**INQUIRIES:** 082- 286-6909**Dejima Indoor Pool**でじまおくない
出島 屋内 プール**ADDRESS:** 32-92 Dejima 1-chome, Minami-ku, Hiroshima City**ACCESS:** From Hiroshima-ko (Hiroshima Port) Streetcar Stop, walking time to destination is 15 minutes.**OPEN HOURS:** 9:00am – 9:00pm (October – June) / 8:30am – 9:30pm (July – September)**CLOSED:** Tuesdays (except on national holidays), August 6 and December 29 – January 3**FEE:** Adults – ¥490 Seniors & Children – ¥240**POOL:** Five 25-meter lanes (0 – 2 meters deep) and walking pool (30m, 1m deep)**INQUIRIES:** 082- 254-2891**Nishi-ku Sports Center**にしく
西区 スポーツセンター**ADDRESS:** 41-1 Kogo-minami 2-chome, Nishi-ku, Hiroshima City**ACCESS:** From Kusatsu Streetcar Stop, walking time to destination is 10 minutes.**OPEN HOURS:** 9:00am – 9:00pm (October – June) / 8:30am – 9:30pm (July – September)**CLOSED:** Wednesdays (except on national holidays), August 6 and December 29 – January 3**FEE:** Adults – ¥490 Seniors & Children – ¥240**POOL:** Six 25-meter lanes (0.9m deep x 2 lanes, 1.15m – 1.25m deep x 4 lanes)**INQUIRIES:** 082- 272-8211**Asaminami-ku Sports Center**あさみなみく
安佐南区 スポーツセンター**ADDRESS:** 13-16 Tomo-higashi 3-chome, Asaminami-ku, Hiroshima City**ACCESS:** From the Astramline Tomo Station, walking time to destination is 8 minutes.**OPEN HOURS:** 9:00am – 9:00pm (October – June) / 8:30am – 9:30pm (July – September)**CLOSED:** Tuesdays (except on national holidays), August 6 and December 29 – January 3**FEE:** Adults – ¥490 Seniors & Children – ¥240**POOL:** Six 25-meter lanes (1.2 – 1.4 meters deep) and a small-sized pool (10m×4.5m, 0.6m deep)**INQUIRIES:** 082-848-2411**Asakita-ku Sports Center**あさきたく
安佐北区 スポーツセンター**ADDRESS:** 50-1 Fukawa 2-chome, Asakita-ku, Hiroshima City**ACCESS:** ① Take a bus bound for Kabe/Obayashi (Fukawa Line) from Hiroshima Bus Center (Sogo Hiroshima Department Store, 3F) and get off at Owa. Walking time to destination: 5 minutes

② From JR Shimo-fukawa Station (JR Geibi Line) or JR Nakajima Station (JR Kabe Line), walking time to destination is 15 minutes.

OPEN HOURS: 9:00am – 9:00pm (October – June) / 8:30am – 9:30pm (July – September)**CLOSED:** Wednesdays (except on national holidays), August 6 and December 29 – January 3**FEE:** Adults – ¥490 Seniors & Children – ¥240**POOL:** Six 25-meter lanes (1.2 – 1.35 meters deep) and a small-sized pool (8.5m×4m, 0.6m deep)**INQUIRIES:** 082-843-4999

Please feel free to contact the International Exchange Lounge at 082-247-9715.

E-mail: golounge@pcf.city.hiroshima.jp

June 2017

Aki-ku Sports Center**安芸区 スポーツセンター****ADDRESS:** 3-1 Nakano-higashi 2-chome, Aki-ku, Hiroshima City**ACCESS:** From JR Akinakano Station (JR Sanyo Line), walking time to destination is 7 minutes.**OPEN HOURS:** 9:00am – 9:00pm (October – June) / 8:30am – 9:30pm (July – September)**CLOSED:** Wednesdays (except on national holidays), August 6 and December 29 – January 3**FEE:** Adults – ¥490 Seniors & Children – ¥240**POOL:** Six 25-meter lanes (0.9m deep x 2 lanes, 1.15m – 1.25m deep x 4 lanes) and a small-sized pool (10m×4m, 0.6m deep)**INQUIRIES:** 082-893-1998**Saeki-ku Sports Center****佐伯区 スポーツセンター****ADDRESS:** 1-27 Rakurakuen 6-chome, Saeki-ku, Hiroshima City**ACCESS:** From JR Itsukaichi Station (JR Sanyo Line), walking time to destination is 25 minutes.**OPEN HOURS:** 9:00am – 9:00pm (October – June) / 8:30am – 9:30pm (July – September)**CLOSED:** Tuesdays (except on national holidays), August 6 and December 29 – January 3**FEE:** Adults – ¥490 Seniors & Children – ¥240**POOL:** Six 25-meter lanes (1.2 – 1.4 meters deep) and a small-sized pool (30m², 0.6m deep)**INQUIRIES:** 082-924-8198**Chuo Park Family Pool****中央公園 ファミリープール**❖ **Open: July & August****ADDRESS:** 4-41 Moto-machi, Nakaku, Hiroshima City**ACCESS:** From Genbaku Dome-mae Streetcar Stop, walking time to destination is 10 minutes.**OPEN HOURS:** 9:00am – 6:00pm ✧ Entrance allowed up to 5:00pm.**FEE:** Adults – ¥780 Seniors & Children (including those under 18) – ¥340**POOL:** Children's pool, circular moving water pool, 50-meter lane pool**INQUIRIES:** 082-211-0063**Municipal Ninoshima Seaside Children's Nature Center Pool****広島市 似島臨海少年自然の家・海水プール**❖ **Open: July 1 –****September 10****ADDRESS:** 182 Higashi-otani, Ninoshima-cho, Minami-ku, Hiroshima City**ACCESS:** Get off at Hiroshima-ko Streetcar Stop. Then take a ferry to Ninoshima island and get off at Ninoshima Port (a 20 min. ferry ride). Walking time to destination: 20 minutes**OPEN HOURS:** 9:00am – 4:00pm ✧ Entrance allowed up to 3:30pm.**CLOSED:** Mondays, the day after national holidays and August 6**FEE:** Adults – ¥490 Children – ¥250 Preschoolers – Free**POOL (Sea water):** Children's pool, waterslide, circular moving water pool, etc.**INQUIRIES:** 082-259-2766

Please feel free to contact the International Exchange Lounge at 082-247-9715.

E-mail: golounge@pcf.city.hiroshima.jp

June 2017

Seasonal Event Information

June 2017

★ Event schedules are subject to change.
Please contact event organizers before you go.



Events Held in Hiroshima City

Every Wednesday between April 5 and December 27, 2017

☺ June 7, 14, 21 & 28; July 5, 12, 19 & 26

Hiroshima Kagura ひろしまけんみんぶんか センター「広島神楽」定期公演

TIME: 7:00 pm – 8:45 pm (The venue will open at 6:00 pm.)

PLACE: Hiroshima Kenmin Bunka Center, Ote-machi, Naka-ku (located near Hondori Shopping Street)

ACCESS: From Kamiya-cho-nishi or Hondori Streetcar Stops, walking time to destination is 3 minutes.

TICKETS: ¥1,000 ◇ All non-reserved seats

◇ Tickets will be sold from 5:00 pm on the performance date at the center.

There are no advance tickets.

INQUIRIES: Hiroshima Kenmin Bunka Center 082-245-2311

Fri., June 2 – Sun., June 4

Toukasan Festival とうかさん

TIME: Noon – 11:00 pm on Jun. 2 & 3 / Noon – 10:00 pm on Jun. 4

PLACE: Enryuji Temple and around Chuo-dori Street, Naka-ku

ACCESS: From Hatchobori Streetcar Stop, walking time to destination is 5 minutes.

INQUIRIES: Enryuji Temple 082-241-7420

☐ *Toukasan* is one of the biggest summer festivals in Hiroshima. Many people in *yukata* (summer kimono) can be seen during the festival. Various vendors will be set up.

Sun., June 4 & 18

Hiroshima Minato Marché ひろしまみなとマルシェ

TIME: 9:00 am – 3:00 pm

PLACE: Open Space between East and West Terminal of Hiroshima Port, Minami-ku

ACCESS: Take the No. 1, 3 or 5 streetcar bound for Hiroden Ujina or Hiroshima Port and get off at the last stop, Hiroshima Port.

INQUIRIES: Hiroshima Minato Marché Office 082-255-6646

☐ You can buy and taste locally-grown fresh vegetables and other food products at the marché.

Sun., June 4

Hiroshima Castle Memorial Day ひろしまじょう 広島城メモリアルデー

TIME: 10:00 am – 4:00 pm

PLACE: Hiroshima Castle

ACCESS: From Kamiya-cho Higashi or Kamiya-cho Nishi Streetcar Stops, walking time to destination is 15 minutes.

ADMISSION FEE: Free admission on the day.

INQUIRIES: Hiroshima Castle 082-221-7512

☐ Various events will be held.

Please feel free to contact the International Exchange Lounge at 082-247-9715.

E-mail: golounge@pcf.city.hiroshima.jp

June 2017

Sun., June 4**Shoubu (Iris-viewing) Tea Ceremony** しょうぶ ちゃかい**TIME:** 9:30 am – 3:00 pm**PLACE:** Shukkeien Garden**ACCESS:** Take a streetcar on the Hiroden Hakushima Line and get off at Shukkeien-mae. Walking time to destination: 5 minutes**FEE:** ¥1,500 for the tea ceremony

✧ Admission fee for the garden (below) is also required.

Adults-¥260, University & High school students-¥150

Junior high & Elementary school students- ¥100

INQUIRIES: Shukkeien Garden 082-221-3620**Sun., June 11****Rice-Planting Festival & Tea Ceremony** たう えまつり (ちゃかい)**TIME:** Tea ceremony → 10:00am – 3:00pm✧ Rice-planting demonstration, *hayashi-da* performance & *nanjo* dance performance will also be held.**PLACE:** Shukkeien Garden**ACCESS:** Take a streetcar on the Hiroden Hakushima Line and get off at Shukkeien-mae. Walking time to destination: 5 minutes**FEE:** ¥700 for tea ceremony

✧ Admission fee for the garden (below) is also required.

Adults - ¥260, University & High school students - ¥150

Junior high & Elementary school students - ¥100

INQUIRIES: Shukkeien Garden 082-221-3620**Sun., June 11****The 22nd Streetcar Festival** だい かい ろ め ん でんしゃ 第22回路面電車まつり**TIME:** 10:00 am – 4:00 pm**PLACE:** Around *Hiroshima Dentetsu*, *Senda Shako* (train depot), Higashi Senda-machi, Naka-ku**ACCESS:** Take a streetcar (no. 1, 3 or 7) and get off at Hiroden Honsha-mae.**INQUIRIES:** Executive Committee (*Hiroshima Dentetsu*)

082-242-3551 (Mon. – Fri., 9:00 am – 5:45 pm)

Sun., June 18 – Fri., July 7**Ajisai (Hydrangea) Festival at Kannon-ji Temple** かんのんじ まつ 観音寺 あじさい 祭り**TIME:** 8:30 am – 5:00 pm ☀ 10:00 am – 5:00 pm on June 18**PLACE:** Kannon-ji Temple, Saeki-ku**ACCESS:** Get on a bus bound for Higashi-kannondai Danchi from Itsukaichi Streetcar Stop or JR Itsukaichi Station (JR Sanyo Line) south exit and get off at Kannondai Iriguchi. Walking time to destination: 5 minutes**INQUIRIES:** Kannon-ji Temple 082-924-1340

▣ 5,000 hydrangeas of 350 varieties will bloom from the middle of June to the beginning of July at Kannon-ji Temple.

▣ On June 18, there will be an opening to public of *nehanzu* (a picture of Buddha entering Nirvana), and serving of *amacha* tea. *Matcha* tea will be served during the event period. *Fūrin*, a wind-bell festival will also be held.

Please feel free to contact the International Exchange Lounge at 082-247-9715.

E-mail: golounge@pcf.city.hiroshima.jp

June 2017

Thurs., June 29**Nagoshi-sai Festival at Sorasaya Shrine** なごしさい 夏越祭**TIME:** From 6:00 pm onward**PLACE:** Sorasaya Inao Shrine, Honkawa-cho, Naka-ku**ACCESS:** Get off at Honkawa-cho or Teramachi Streetcar Stops. Walking time to destination: 5 minutes**INQUIRIES:** Sorasaya Inao Shrine 082-231-4476

☐ This is a festival to pray for good health during the summer.

Fri., June 30**Nagoshi-no-Oharae at Hiroshima Gokoku Shrine** ひろしまごこくじんじや なごしのおおはらえ 広島護国神社 夏越大祓**TIME:** From 4:00 pm onward**PLACE:** Hiroshima Gokoku Shrine, Moto-machi, Naka-ku**ACCESS:** From Kamiya-cho Higashi Streetcar Stop, walking time to destination is 10 minutes. It is located near Hiroshima Castle.**INQUIRIES:** Hiroshima Gokoku Shrine 082-221-5590 HP: <http://www.h-gokoku.or.jp/>

☐ This is a ritual to purify sins which one has unknowingly committed which stain one's mind and body and which may have built up since the beginning of the year 2017. Visitors may purify their mind and body by placing a paper doll with their name and age written on it on their body.

Sun., July 2**Tanabata (star festival) Tea Ceremony** たなばたちやかい 七夕茶会**TIME:** Not finalized**PLACE:** Shukkeien Garden**ACCESS:** Take a streetcar on the Hiroden Hakushima Line and get off at Shukkeien-mae. Walking time to destination: 5 minutes**ADMISSION FEE:** Adults-¥260, University & High school students-¥150

Junior high & Elementary school students- ¥100

✧ Fee for the tea ceremony is also required.

INQUIRIES: Shukkeien Garden 082-221-3620

☐ Tanabata is a star festival usually held on July 7 each year.

Events Held on Miyajima**Thurs., June 15****Kobo-Daishi Birth Anniversary Festival** こうぼうだいしこうたん 弘法大師 降誕 いろは さい**TIME:** From 11:00 am onward**PLACE:** Daishoin Temple, Miyajima**ACCESS:** Get off at Miyajima-guchi Station (JR Sanyo Line) or get off at the Hiroden Miyajima Stop (Streetcar Miyajima Line), then take a ferry to Miyajima.**INQUIRIES:** Daishoin Temple 0829-44-0111

☐ Kobo-Daishi (A.D. 774 – A.D. 835), also known as Kukai, is a famous Japanese monk, scholar and calligrapher. He is the founder of the Shingon sect of Buddhism.

☐ Amacha tea will be served.

Sat., June 17**Itsukushima Benzaiten Festival** いつくしまべんざいてんたいさい 厳島弁財天大祭**TIME:** 10:00 am – 4:00 pm**PLACE:** Daiganji Temple, Miyajima**ACCESS:** Get off at JR Miyajima-guchi Station (JR Sanyo Line) or the Miyajima Streetcar Stop (Hiroden Streetcar Miyajima Line), then take a ferry to Miyajima.

Please feel free to contact the International Exchange Lounge at 082-247-9715.

E-mail: golounge@pcf.city.hiroshima.jp

June 2017

INQUIRIES: Daiganji Temple 0829-44-0179

▣ *Benzaiten* is the deity of water and music. Daiganji Temple's *Benzaiten* is one of the three major *Benzaiten* statues in Japan and is only open to the public once a year on this festival day.

Fri., July 7

Seven Gods of Fortune Festival しちふくじんじゆふくさい 七福神授福祭

TIME: From 11:00 am onward

PLACE: Daishoin Temple, Miyajima

ACCESS: Get off at JR Miyajima-guchi Station (JR Sanyo Line) or the Miyajima Streetcar Stop (Hiroden Streetcar Miyajima Line), then take a ferry to Miyajima.

INQUIRIES: Daishoin Temple 0829-44-0111

▣ Buddhist music service in dedication to *Shichifukujin* (Seven Gods of Fortune) will be held.

Thurs., July 27

Ichitate-sai いちたてさい 市立祭

TIME: From 9:00 am onward

PLACE: Itsukushima Shrine, Miyajima

ACCESS: Get off at JR Miyajima-guchi Station (JR Sanyo Line) or the Miyajima Streetcar Stop (Hiroden Streetcar Miyajima Line), then take a ferry to Miyajima.

FEE: Admission fee for Itsukushima Shrine

{ Adults & University students-¥300 High school students-¥200
Junior high & Elementary school students-¥100 }

INQUIRIES: Itsukushima Shrine 0829-44-2020

▣ After the ritual ceremony, *bugaku* (traditional Japanese imperial court dance music) will be performed.

Events Held Outside of Hiroshima City

Sat., Sun. & national holidays

Sake Brewery Opening ようこそ じょうかまちさいじょう ようこそ 醸華町西条

PLACE: Sake Breweries, Higashihiroshima City

ACCESS: Get off at JR Saijo Station (JR Sanyo Line).

FEE: Free

INQUIRIES: *Saijo Sakagura-dori Kanko Annai-jo*

Tel. & Fax 082-421-2511 (10:00am – 4:00pm, closed on Mondays)

▣ Some *sake* breweries open to the public on Sat., Sun. & national holidays. Signboards with the words

“ようこそ 醸華町西条” (“*Yokoso Jokamachi Saijo*”) will be placed in front of the opened breweries.



Thurs., June 1 – Sun., September 10

Cormorant Fishing in Miyoshi みよし うかい 三次の鵜飼

TIME: From 7:30 pm onward (Cruising will be canceled if it rains heavily.)

◇ Please come to the reception by 7:00pm.

PLACE: *Tokaichi Shinsui Koen* (Park), Miyoshi City

ACCESS: From JR Miyoshi Station (JR Geibi Line), walking time to destination is 15 minutes.

PASSENGER FARE:

◆ Sunday – Thursday:

- Regular fare: Junior high school students and up-¥3,000 Elementary school students-¥1,500
- Fare with a chair: Junior high school students and up-¥3,500 Elementary school students-¥1,750

Please feel free to contact the International Exchange Lounge at 082-247-9715.

E-mail: golounge@pcf.city.hiroshima.jp

June 2017

◆ Friday & Saturday:

- Regular fare: Junior high school students and up-¥3,300 Elementary school students-¥1,650
- Fare with a chair: Junior high school students and up-¥3,800 Elementary school students-¥1,900
- ◇ Please note that reservations are required. Reservations are accepted until 5:00 pm on the day before the day you want to go.
- ◇ Reservations will not be accepted on June 3 (cormorant fishing festival) & August 19 (Miyoshi fireworks festival).

RESERVATIONS & INQUIRIES: *Miyoshi City Kanko Kyokai* (Tourist Association)

0824-63-9268 E-mail: miyo-344@bz01.plala.or.jp

▣ Fishermen start out at night with lanterns and cormorants on small wooden boats. The birds are trained to catch *Ayu* (sweetfish). Very unique white-colored cormorants (a type of water fowl, usually with black feathers) were donated by Yaan in Szechuan, China, Miyoshi's friendship city, and can be seen only in Miyoshi.

Sat., June 3**The 38th Chugoku Region Kagura Performance**

だい かいちゅうごくち ほ う せんばつ か ぐ ら きょうえんたいかい
第38回 中国 地方 選抜 神楽 競演 大会

TIME: From noon onward (the venue will open at 10:00 am.)

◇ Numbered tickets to enter the venue will be distributed from 8:30 am.

PLACE: *Togouchi Fureai Center*, Akiota-cho

ACCESS: ① From Hiroshima Bus Center (Sogo Hiroshima Department Store, 3F), take a bus bound for Sandankyo and get off at Akiota-cho Yakuba. Walking time to destination: 1 minutes
② From Togouchi I.C. on the Chugoku Expressway, driving time to destination is 5 minutes..

TICKETS: Advance: Adults-¥2,100 Senior high, junior high & elementary school students-¥500
At the door: Adults-¥2,600 Senior high, junior high & elementary school students-¥500
◇ Advance tickets are sold at Lawson (convenience store), *Hiroshima Yume Plaza* on Hondori Shopping Street and *Alpark Tenmaya*.

INQUIRIES: *Akiota-cho Shoko Kai* 0826-28-2504

June 3 (Sat.), 4 (Sun.), 10 (Sat.) & 11 (Sun.)**Annual Open House at Yoshimizuen Garden**

よしみずえん いっぱんこうかい
吉水園 一般 公開

TIME: 9:00 am – 5:00 pm

PLACE: Yoshimizuen Garden, Kake, Akiota-cho

ACCESS: From Togouchi I.C. on the Chugoku Expressway, driving time to destination is 15 minutes.

ADMISSION FEE: 15 years old and up-¥200, 14 years old and under-Free

INQUIRIES: *Akiota-cho Kanko Kyokai* (Tourist Association) 0826-28-1800

▣ Various events such as *kagura* performances will also be held on June 3 & 4 in the Kake area.

Sun., June 4**Mibu-no Hanadaue (Rice-Planting Festival) in Kitahiroshima-cho**

みぶ はな
壬生の花

だうえ
田植

TIME: ◆ *Michi-yuki* (parade) – From 10:50 am onward

◆ Rice-planting – From 2:00 pm onward

PLACE: ◆ *Michi-yuki* (parade) – From Mibu Shopping Street to the special venue for rice-planting

◆ Rice-planting – Special venue for rice-planting

ACCESS: Take an express bus bound for Miyoshi / Shobara from Hiroshima Bus Center (Sogo Hiroshima Department Store, 3F) and get off at Chiyoda I.C. Walking time to destination: 10 minutes

INQUIRIES: *Kitahiroshima-cho Kanko Kyokai* (Tourist Association) 0826-72-6908

Please feel free to contact the International Exchange Lounge at 082-247-9715.

E-mail: golounge@pcf.city.hiroshima.jp

June 2017

▣ *Mibu-no Hanataue* is a traditional rice-planting festival which has been designated as an Important Folk Cultural Property of Japan. Beautifully decorated cattle will cultivate the rice fields and women dressed in traditional costumes called *Saotome* will plant rice while *Taiko* drums are played.

UNESCO designated this festival as a “masterpiece of the oral and intangible heritage of humanity” in 2011.

Sat., June 10

Sakagura Walking Tour (Free) さかぐら 酒蔵のまち てくてくガイド

TIME: Tour will start on an as-needed basis between 10:00am and 11:00am.

MEETING PLACE: Saijo Sakagura-dori Kanko Annai-jo (Tourist Information Center), Higashihiroshima City

ACCESS: Get off at JR Saijo Station (JR Sanyo Line).

PARTICIPATION FEE: Free

INQUIRIES: Saijo Sakagura-dori Kanko Annai-jo Tel. & Fax 082-421-2511

▣ A volunteer guide will show you *Sakagura-dori* (Sake Brewery Street). During the tour you will be able to taste *sake* and the purified water that is used to make it.

▣ A regular guided tour (fee-based) is also held every day except on the 10th. Advance reservations are required by a week before the day you wish to. An English speaking guide is available. Please contact the *Saijo Sakagura-dori* Tourist Information Center in advance.

June 9 (Fri.), 10 (Sat.), 11 (Sun.) & 12 (Mon.)

Onomichi Antique Market おのみちだいこつとうさい 尾道大骨董祭

TIME: 8:00 am – 4:00 pm ◇ 8:00 am – noon on Monday

PLACE: Tennen Onsen Onomichi Fureai no Sato (spa facilities), Mitsugi-cho, Onomichi City

ACCESS: ① From JR Shin-Onomichi Station (JR Sanyo *Shinkansen* Line), driving time by taxi to destination is 25 minutes.

② From Onomichi-kita I.C. on the Chugoku Yamanami Expressway, driving time to destination is 10 minutes.

③ Take a free shuttle bus to the spa from JR Higashi Onomichi Station (JR Sanyo Line).

Departure Time (one round service a day)

• JR Higashi Onomichi Station: 8:55 am

• Spa: 3:10 pm

INQUIRIES: Iroha Antique Market Office 090-3155-8229

Tue., June 20

Hatsuka-no-ichi Market はつか いち 廿日の市

TIME: 8:00 am – 10:00 am

PLACE: The open Space in front of Hatsukaichi City Hall, Hatsukaichi City

ACCESS: From Hatsukaichi Shiyakusho-mae (Hiroden Streetcar Miyajima Line), walking time to destination is 5 minutes.

INQUIRIES: Hatsukaichi Kanko Kyokai (Tourist Association) 0829-31-5656



Sat., June 24

Onomichi Gion Festival ぎおんまつり 祇園祭

TIME: 6:00 pm – 9:00 pm

PLACE: Watashiba-dori Street, Tsuchido, Onomichi City

ACCESS: From JR Onomichi Station (JR Sanyo Line), walking time to destination is 10 minutes.

INQUIRIES: Yasaka Shrine 0848-37-4317

▣ Men will carry three *mikoshi*, portable *shinto* shrines.



Sun., June 25**Innoshima Suigun Festival / Island Festival**いんのしますいぐん しま
因島 水軍 まつり ・ 島 まつり**PLACE:** Around Innoshima Suigun Castle, Innoshima, Onomichi City**ACCESS:****Innoshima Suigunjo Castle**

Take a bus bound for Habu-ko (Habu Port) from JR Onomichi Station (JR Sanyo Line) and get off at Kaname-bashi. Then, change to the bus for Ohama and get off at Suigunjo-iriguchi.

Walking time to destination: 10 minutes

CONTENT: *Shima-matsuri* (island festival) parade, dance and *taiko* performances, etc.**INQUIRIES:** Innoshima Suigun Festival Executive Committee 0845-26-6212

☐ Innoshima was one of the fortified trading posts of the Murakami *Suigun* which did trade with Asian countries and held power over the sea around Japan between the Muromachi Era (A.D. 1336 – A.D. 1573) and the Age of The Provincial Wars.

Innoshima *Suigun* Festival consists of three festivals; *Shima-matsuri* (Island Festival) on June 25, *Hi-matsuri* (Fire Festival) on August 26 and *Umi-matsuri* (Sea Festival) on August 27.

Sat., July 1**Takehara Tanabata Festival (Star Festival)**たなばた
たけはら 七夕 まつり**PLACE:** Around the shopping street in front of JR Takehara Station, Takehara City**ACCESS:** Get off at JR Takehara Station (JR Kure Line).**INQUIRIES:** Takehara Ekimae Shotengai Shinko Kumiai 0846-22-5542

☐ *Tanabata* is a star festival usually held on July 7 each year. Stage performances, food kiosks, etc. will be held.

**Sat., July 8****Otebi Festival**てびしんじ
お手火神事**TIME:** From 8:00pm onward**PLACE:** Nunakuma Shrine, Tomo-cho, Fukuyama City**ACCESS:** Take a bus from JR Fukuyama Station (JR Sanyo Line) and get off at Tomo-no-ura. Walking time to destination: 10 minutes**INQUIRIES:** Nunakuma Shrine 084-982-2050

☐ *Otebi* is a fire festival in which men carry three torches weighing about 150kg and offer them to the shrine. This is a traditional festival which has been held since the Kamakura Period (A.D. 1185 – A.D. 1393). This is designated as a Fukuyama City intangible folklore cultural asset.

Events Held in Yamaguchi Prefecture**Thurs., June 1 – Sun., September 10****Cormorant Fishing in Iwakuni**きんたいきょう うかい
錦帯橋の鵜飼**TIME:** 7:00 pm – 9:00 pm**PLACE:** Nishiki-gawa River & Kintaikyo Bridge, Iwakuni City**ACCESS:** Get off at JR Iwakuni Station (JR Sanyo Line) and take a bus bound for Kintaikyo Bridge. Get off at Kintaikyo (a 20 min. bus ride).

Please feel free to contact the International Exchange Lounge at 082-247-9715.

E-mail: golounge@pcf.city.hiroshima.jp

June 2017

PASSENGER FARE: Adults-¥2,000 Children-¥1,000

✧ The fare will be temporarily changed on August 5, the day of the fireworks festival.

RESERVATIONS & INQUIRIES: *Kintaikyo Ukai Office* 0827-28-2877

▣ Originating about 400 years ago, cormorant fishing under lit lanterns is a summer tradition in Iwakuni.

Sat., June 10 & Sun., June 11

Kintaikyo Iris Festival

きんたいきょうはなしょうぶ
錦帯橋 花菖蒲 まつり

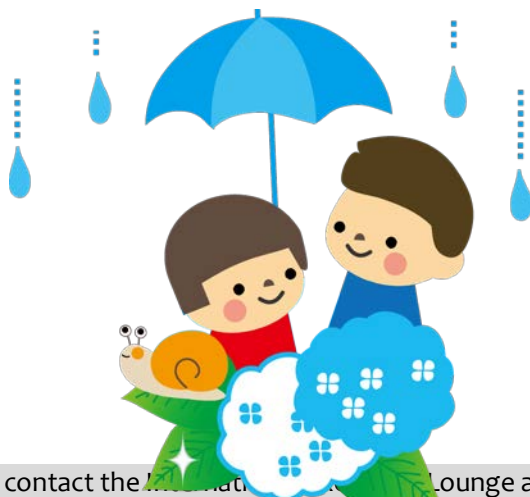
TIME: 10:00 am – 4:00 pm

PLACE: *Kikko Koen* (park), Iwakuni City

ACCESS: Get off at JR Iwakuni Station (JR Sanyo Line) and take a bus bound for Kintaikyo Bridge and get off at Kintaikyo (a 20 min. bus ride). Walking time to destination: 10 minutes

INQUIRIES: *Kanko Shinko Ka*, Iwakuni City Hall 0827-29-5116

▣ Various events such as traditional Japanese performing arts will be held on stage.



Please feel free to contact the *Golounge* at 082-247-9715.

E-mail: golounge@pcf.city.hiroshima.jp

June 2017



Municipal Facilities

Facilities

(Address / Telephone / Open Hours / Closed / Admission Fee / URL)

Admission is generally allowed up to 30 min. prior to closing.


Hiroshima City Forest Park & Insectarium

(173 Fujigamaru, Fukuda-cho, Higashi-ku 732-0036 / Forest Park: 899-8241, Insectarium: 899-8964 / Forest Park: 9:00 am - 4:30 pm; Insectarium: 9:00 am - 4:30 pm / Closed: Forest Park - Wednesdays; Insectarium - Wednesdays / Admission Fees for the Insectarium: Adults-¥510, Seniors & High school students-¥170, Junior high & Elementary school students-Free (Free admission for high school students on Saturdays (except on national holidays and during school holidays)) / Forest Park: <http://www.daiichib-shitei.com/forest/> Insectarium: <http://www.hiro-kon.jp/>)


Events at the Forest Park

Hiroshima Yamanohi (Mountain Day) Events

- ◆ **Green Adventure** / Sun., Jun. 4 / 9:00 am - 2:00 pm / Meeting place: Next to *Kanri Center*
 - ◇ Elementary school students should be accompanied by their guardians.
 - ◇ Participants will be accepted on the day of.
 - ◇ This activity will be canceled if it rains.
 - ◇ Participants will walk around the park for 1 hour; please wear comfortable shoes.
- ◆ **Nature Game** / Sun., Jun. 4 / 1:00 pm - 3:00 pm / *Shibafu Hiroba* ◇ The first 50 participants will be accepted from 12:30 pm on the day of.
- ◆ **Stamp Rally** / Sun., Jun. 4 & 11 / 9:30 am - 2:00 pm / *Shibafu Hiroba*
 - ◇ The first 200 people will be accepted on the day of.
 - ◇ This will be canceled if it rains.

 **Make a Pizza** / Sat., Jun. 17 & Sun., Jun. 18 / 10:00 am - 1:00 pm / *Ringyo Taiken Hiroba* / For elementary school students and their guardians / Participation fee: Free ◇ Bring pizza ingredients with you.

TO APPLY: Send an *ofuku-hagaki* (retrun postcard) with applicants' names, address, telephone number, grade, event date you wish to attend and the event name **森のピザづくり** ("Mori no pizza zukuri") to the park postmarked by Thu., Jun. 8. 15 postcards will be selected at random by a drawing of names for each day.

 **Lecture on the Grass Whistle** / Sun., Jun. 18 / 1:00 pm - 3:00 pm / *Shibafu Hiroba, Kyukei-jo* / Fee: Free

The Hiroshima Botanical Garden

(3-495 Kurashige, Saeki-ku 731-5156 / 922-3600 / 9:00 am - 4:30 pm / Closed on Friday / Adults-¥510, Seniors & High school students-¥170, Junior high and Elementary school students-Free (Free admission for high school students on Saturdays (except on national holidays and during school holidays)) / <http://www.hiroshima-bot.jp/>)

<Exhibitions> Exhibitions will close at 3:30 pm on their last day.

◆ **Tenji Shiryō-kan**

- 🌸 **Botanical Arts** / Tue., May 9 - Thurs., Jun. 8
- 🌸 **Small Bonsai** / Sat., Jun. 10 - Thurs., Jun. 15
- 🌸 **Touchuu-kasou** (*Ophiocordyceps sinensis*) / Sat., Jun. 17 - Thurs., Aug. 17

◆ **Tenji Onshitsu (hothouse exhibitions)**

- 🌸 **African Violets & Iwatabako** (*Conandron ramondoides*) / Sat., May 27 - Thurs., Jun. 8
- 🌸 **Ucho-ran** (Japanese wild orchids) / Sat., Jun. 10 - Thurs., Jun. 15
- 🌸 **Colorful Summer Leaves** / Wed., Jun. 21 - Mon., Jul. 17

◆ **Okugai Tenji-jo (outdoor exhibitions)**

- 🌸 **Hydrangea** / Sat., Jun. 3 - Sun., Jun. 25

<Event>

- 🌸 **Hanashoubu (Japanese iris) & Ajisai (hydrangea) Festival** / Weekends between Jun. 3 and Jun. 25
 - ☺ Tea ceremonies will be held at the Japanese garden on the event days.

<Lectures>

- 🌸 **How to Grow Ajisai (hydrangea)** / Sun., Jun. 4 & Sat., Jun. 10 / 1:30 pm - 2:30 pm
- 🌸 **How to Grow Hanashoubu (Japanese iris)** / Sun., Jun. 11 / 1:30 pm - 2:30 pm
- 🌸 **Junior Project** / Sun., Jun. 11 & Sun., Jul. 9 / ① 11:00 am - noon ② 1:30 pm - 2:30 pm
- 🌸 **Small Bonsai** / Sun., Jun. 11 / 1:30 pm - 2:30 pm
- 🌸 **Lecture: Herbs (3 lectures total)** / Sat., Jul. 8, 15 & 22 ◇ Participants are required to attend all lectures. / 1:30 pm - 3:00 pm / Fee: ¥3,500 for materials

Please feel free to contact the International Exchange Lounge at 082-247-9715.

E-mail: golounge@pcf.city.hiroshima.jp

June 2017

To APPLY: Send an *ofuku-hagaki* (return postcard) with your name, address and telephone number and the event name **暮らしに役立つハーブ講座** (*"Kurashi ni yakudatsu herb kouza"*) to the Botanical Garden by Thurs., Jun. 22. 35 people will be selected at random by a drawing of names.

🌿 **Lecture: Plant Biotechnology (3 lectures total)** / Tue., Jul. 25; Tue., Aug. 1 & 8

✧ Participants are required to attend all lectures. / 1:30 pm - 3:30 pm / Fee: Free

To APPLY: Send an *ofuku-hagaki* (return postcard) with your name, address and telephone number and the event name **バイオテクノロジー入門講座** (*"Shokubutsu biotechnology nyuumon kouza"*) to the Botanical Garden by Thurs., Jul. 6. 20 people will be selected at random by a drawing of names.

🌿 **Botanical Class for Families** / Wed., Jul. 26 / 10:30 am - 2:00 pm / For elementary school students (1st-3rd grade) and their guardians / Fee: ¥700 (tentative)

To APPLY: Send an *ofuku-hagaki* (return postcard) with your name, address, telephone number, grade and the event name **親子植物体験教室** (*"Oyako shokubutsu taiken kyushitsu"*) to the Botanical Garden by Thurs., Jul. 6. 30 groups will be selected at random by a drawing of names.

✧ Flower arrangement lesson, outdoor games, exploring the greenhouse, etc.

🏛️ **Children's Museum of Culture and Science**

(5-83 Moto-machi, Naka-ku 730-0011 / 222-5346 / 9:00 am - 5:00 pm / Closed on Jun. 5, 6, 7, 12, 19 & 26 / Admission fee for planetarium is required (see below). / <http://www.pyonta.city.hiroshima.jp/>)

★ **Planetarium ★**

👤 **Admission Fee for Planetarium:**

Adults-¥510, Seniors & High school students-¥250, Junior high & Elementary school students-Free

✧ Free admission for high school students on Saturdays (except on most national holidays and during school holidays).

Admission fee for adults is ¥250 on the second Saturday of every month (except on most national holidays and during school holidays).



☆ **Planetarium Program**

- ◆ **How to Watch Stars in the Night Sky** (45 min.) / Until Sun., Sept. 10 / Adults-¥510, Seniors & High school students-¥250

Time Schedule

- ✧ Weekdays: 11:00 am
- ✧ Sat., Sun., national holidays:
① 10:00 am ② 3:00 pm

- ◆ **Calendars of Ancient Times** / Until Mon., Jul. 17 / Adults-¥510, Seniors & High school students-¥250

Time Schedule

- ✧ Weekdays: 2:00 pm
- ✧ Sat., Sun., national holidays:
① 11:00 am ② 2:00 pm

☆ **360° Full Dome Shows**

- ◆ **Kaluoka'hina - The Enchanted Reef** - ('10, 40 min.) / Until Fri., Oct. 27 / Adults-¥510, Seniors & High school students-¥250

Time Schedule

- ✧ Weekdays: 3:00 pm
- ✧ Sat., Sun., national holidays: 1:00 pm

☆ **Refretarium** / Weekdays: 1:00 pm - 1:20 pm; Sat., national holidays: 4:00 pm - 4:20 pm / High school students and up-¥200

- ◆ **Spring Program** / Until Fri., Jun. 9 (except Sundays)
- ◆ **Summer Program** / Sat., Jun. 10 - Fri., Sept. 8 (except Sundays)

✧ This is a program to refresh your mind and body during lunch time while watching the starry sky and listening to music. Although the main target of this program is adults, anyone who wishes to rejuvenate themselves is welcome.

☆ **Starry Sky Tour**

- ◆ **Tonight's Starry Sky & Astronomical Bodies** / Sundays until Sun., Jul. 16 / 4:00 pm - 4:50 pm / Adults-¥510, Seniors & High school students-¥250

☆ **Special Constellation Projection for Children: Starry Sky of Tanabata** (Star Festival on July 7) / Thurs., Jun. 1 - Fri., Jul. 7 (except Sundays) / ① 10:00 am - 10:30 am ② 11:00 am - 11:30 am / Adults-¥510, Seniors & High school students-¥250

★ **Events ★**

☆ **Events at Apollo Hall** (250 seats) / Free admission

- ◆ **Percussion Concert** / Sun., Jun. 11 /
① Noon ② 2:30 pm (Doors will open at 11:45 am for ① & at 2:15 pm for ②.)
- ◆ **Clarinet, Horn & Piano Trio Concert** / Sun., Jun. 25 / ① Noon ② 2:30 pm (Doors will open at 11:45 am for ① & at 2:15 pm for ②.)

Please feel free to contact the International Exchange Lounge at 082-247-9715.

E-mail: golounge@pcf.city.hiroshima.jp

June 2017

- ☆ **Craft Workshops** / Jun. 10 (Sat.), 18 (Sun.) & 25 (Sun.) / 1:00 pm - 3:30 pm / For children under elementary school entry age, elementary school students (1st - 3rd grade) and their guardians / 3F, *Kosaku-shitsu* (Craft Room) / Fee: ¥30 for materials

✧ Each day's program is different. For more information, please contact the museum.

- ☆ **Science Show: Experiments with Air** / Sat., Jun. 24 / ① 1:30 pm - 2:00 pm ② 3:00 pm - 3:30 pm / 1F, Science Studio / Fee: Free

- ⊕ The events listed below require advance applications.

To APPLY: Send an *ofuku-hagaki* (return postcard) to the museum, postmarked by each event's application deadline with the following information: applicants' names, address, telephone number, school year and the event name and time you wish to attend.

Science Workshops

- ◆ **Properties of Light** / 光^{ひかり}であそぼう ("*Hikari de asobou*") / Sun., Jun. 25 / 1:30 pm - 4:00 pm / For elementary (3rd - 6th grade) & junior high school students / Fee: ¥300 / Closing date for applications: Sun., Jun. 11
✧ 16 people will be selected at random by a drawing of names for each time slot.

Craft Workshop

- ◆ **Pastel Art** / パステルアート ("*Pastel art*") / Sat., Jun. 24 / ① 9:30 am - noon ② 1:30 pm - 4:00 pm / For elementary & junior high school students / Fee: ¥300 / Closing date for applications: Sat., Jun. 10 ✧ 12 people will be selected at random by a drawing of names for each time slot.
- ◆ **Bamboo Charcoal Wind Bell** / 竹炭^{たけずみ}の風鈴^{ふうりん} ("*Take-zumi no fuurin*") / Sun., Jun. 25 / ① 9:30 am - noon ② 1:30 pm - 4:00 pm / For elementary & junior high school students / Fee: ¥300 / Closing date for applications: Sun., Jun. 11 ✧ 20 people will be selected at random by a drawing of names for each time slot.
- ◆ **Pottery Class** / 夏の陶芸^{なつとうげい}教室^{きょうしつ} ("*Natsu no tougei kyoushitsu*") / Sun., Jul. 9 / ① 9:30 am - noon ② 1:30 pm - 4:00 pm / For elementary & junior high school students / Fee: ¥800 / Closing date for applications: Sun., Jun. 25 ✧ 20 people will be selected at random by a drawing of names for each time slot.

Other Workshops:

- ◆ **Electricity-conducting Matters** / 街角^{まちかど}かがく
ひろば^{ひろば}：電気^{でんき}を通^{とお}すもの^{とおさないもの}
("Machikado kagaku hiroba: denki wo toosu")

mono, toosanai mono") / Sat., Jul. 8 / 1:30 pm - 4:00 pm / For elementary school students / Fee: ¥200 / Closing date for applications: Sat., Jun. 24

✧ 20 people will be selected at random by a drawing of names.

Hiroshima City Asa Zoological Park

(Asa-cho Dobutsuen, Asakita-ku 731-3355 / 838-1111 / 9:00 am - 4:30 pm / Closed: Thursdays / Adults-¥510, Seniors & High school students-¥170, Junior high & Elementary school students-Free / <http://www.asazoo.jp/>)

- 🦋 **Backyard Guide Tour** / Sat., Jun. 3, 10 & 17 / ① 11:00 am ② 1:30 pm / Please gather near the entrance at 9:00 am on each activity day. The first 10 - 40 people can participate. The number of participants will differ depending on where you visit. We will explore a different place on each trip.
- 🦋 **Day of Parrots & Parakeets: Take a Photo with the Parakeets** / Sun., Jun. 11 / ① 10:45 am - 11:15 am ② 1:30 pm - 2:00 pm / Entrance of *Peechiku Park*
- 🦋 **World Giraffe Day Event** / Sun., Jun. 18 / 11:30 am - noon
- 🦋 **Giant Salamander Facility Tour** / Sat., Jun. 24 / 11:00 am - 11:45 am ✧ Reservations will be accepted from 9:00am at the main entrance until 20 spots are filled.
- 🦋 **Meet the Black Rhinoceros named Hana** / Sat., Jun. 24 / ① 1:30 pm ② 1:45 pm
✧ Participation tickets will be distributed from 9:00am at the main entrance until 10 spots are filled for each time slot.
✧ The black rhinoceros, *Hana*, is the world's oldest living black rhinoceros.
- 🦋 **Anatomy Class** / Sun., Jun. 25 / 9:30 am - noon / For the 4th - 6th grade students of elementary school ✧ Participants will be accepted by phone (Tel. 082-838-1111) between Jun. 2 and Jun. 21. The first 30 people will be accepted.
☺ This is the lecture to learn the biology of animal body through the anatomy of a chicken.

Numaji Transportation Museum (Hiroshima City Transportation Museum)

(2-12-2 Chorakujji, Asaminami-ku 731-0143 / 878-6211 / 9:00 am - 5:00 pm / Closed: Jun. 5, 6, 7, 8, 12, 19 & 26 / Adults-¥510, Seniors & High school students-¥250, Junior high school students and under-Free / <http://www.vehicle.city.hiroshima.jp>)

Please feel free to contact the International Exchange Lounge at 082-247-9715.

E-mail: golounge@pcf.city.hiroshima.jp

June 2017

- 🔊 **Fire Music Band Concert** / Sun., Jun. 25 / 1:30 pm - 2:10 pm / 1F, *Tamokuteki Hall* / Free admission
- 🔊 **Science Show: Science Magic Show** / Sat., Jun. 10 & Sun., Jun. 11 / ① 11:30 am - 11:50 am ② 1:30 pm - 1:50 pm ③ 2:30 pm - 2:50 pm / 1F, *Tamokuteki Hall* / Fee: Free
- 🔊 **Exhibition on a Streetcar Exposed to the A-Bomb** / Sat., Jun. 17 / ① 11:00 am - noon ② 1:30 pm - 3:00 pm / *Okugai Hiroba* (outdoor open space) / Fee: Free
 ✧ Exhibition will be canceled if it is bad weather.
- 🔊 **Vehicle Land: Playing with Toy Vehicles** / Sat., Jun. 17 & Sun., Jun. 18 / 1:00 pm - 4:00 pm (entry allowed up to 3:45 pm.) / 1F, *Tamokuteki Hall* / Fee: Free
- 🔊 **Children's Craft Workshops** / Sun., Jun. 4, 11, 18 & 25 / 1:00 pm - 3:30 pm / For preschoolers, elementary school students and their guardians / 1F, Craft Room / Fee: ¥50 for materials ✧ The first 100 groups can participate on the day of.
- 🔊 **Craft Workshops for Elementary School Students: Glider-shaped Paper Airplane** / Sat., Jun. 24 / ① 9:30 am - 11:30 am ② 1:30 pm - 3:30 pm / 1F, Craft Room / For elementary school students (1st - 4th grade students should be accompanied by their guardians.) / Fee: ¥100 for materials
TO APPLY: Send an *ofuku-hagaki* (return postcard) with the applicant's name, name of the school the applicant belongs to, grade, address, telephone number, event date and the workshop name しょうがくせいこうさくきょうしつ **小学生工作教室：グライダー型紙ひこうき** (*"Shougakusei kousaku kyoushitsu: glider-gata kami hikouki"*) to the museum by Sun., Jun. 14. 15 people will be selected at random by a drawing of names for each time slot.

🌧️ **Hiroshima City Ebayama Museum of Meteorology**
 (1-40-1 Eba-minami, Naka-ku 730-0835 / 231-0177 / 9:00 am - 5:00 pm / Closed on Mondays (except Jul. 17), Jul. 18, 19 & 26 - 28 / Adults-¥100, Seniors & High school students-¥50, Junior high & Elementary school students-Free (Free admission for high school students on Saturdays except during school holidays) / <http://www.ebayama.jp/>)

◆ **Free Admission on June 4** ◆

※ **Special Event on Meteorological Day** / Sun., Jun. 4 / 10:00 am - 4:00 pm

※ Science Shows

- ◆ **Amazing Experiments** / Jun. 3 (Sat.), 4 (Sun.) & 11 (Sun.) / ① 1:30 pm - 2:00 pm ② 3:00 pm - 3:30 pm
- ◆ **Curious World of 196 Degrees below Zero** / Jun. 17 (Sat.), 18 (Sun.) & 25 (Sun.) / ① 1:30 pm - 2:00 pm ② 3:00 pm - 3:30 pm
- ◆ **Magical Water Science** / Jul. 9 (Sun.), 15 (Sat.), 16 (Sun.) & 17 (Mon.) / ① 1:30 pm - 2:00 pm ② 3:00 pm - 3:30 pm
- ◆ **Mystery of Air** / Jul. 21 (Fri.), 22 (Sat.), 23 (Sun.) & 25 (Tue.) / ① 11:00 am - 11:30 am ② 1:30 pm - 2:00 pm ③ 3:00 pm - 3:30 pm
- ◆ **Experiment Shows** / Jul. 29 (Sat.) & 30 (Sun.) / ① 11:00 am - 11:30 am ② 1:30 pm - 2:00 pm ③ 3:00 pm - 3:30 pm
- ※ **Science Workshops** / 1:00 pm - 3:30 pm / For junior high school students and under
 ✧ The first 50 participants will be accepted for each workshop from 10:00 am on the day of.
- ◆ **Key Chain** / Sat., Jun. 24 / Fee: ¥120 for materials
- ◆ **Paper Craft** / Sat., Jul. 8 / Fee: ¥30 for materials
- ※ **Experiment Corner: Sound** / Sat., Jul. 1 & Sun., Jul. 2 / ① 11:00 am - noon ② 1:00 pm - 4:00 pm
- ※ **Mini Experiment Show: Sound (10 min.)** / Sat., Jul. 1 & Sun., Jul. 2 / ① 11:00am ② 1:30 pm ③ 2:30 pm ④ 3:30 pm
- ※ **Field Trip for Senior High & Junior High School Students: Learn about a Weather Forecaster's Job** / Sun., Jul. 30 & Mon., Jul. 31 / 2:00 pm - 4:45 pm / Venue: ① Jul. 30 - Ebayama museum ② Jul. 31 - RCC Broadcasting (Moto-machi, Naka-ku) / For senior high & junior high school students who can attend both days / Fee: ¥50 (insurance fee)
 ✧ Admission fee for the museum is also required for senior high school students.
TO APPLY: Send an *ofuku-hagaki* (return postcard) with applicant's name, address, telephone number, grade, age, and the event name ちゅうこうせい **中高生のための社会見学「密着！気象キャスターのお仕事」** (*"Chu kousei no tameno shakai kengaku: "micchaku! kishou caster no oshigoto"*) to the museum by Fri., Jun. 30. 12 people will be selected at random by a drawing of names.
- ※ **Special Craft Workshop: Barometer** / Sun., Jul. 16 & Mon., Jul. 17 / 1:00 pm - 4:00 pm / For elementary (4th - 6th grade) and junior high school students ✧ Elementary school students should be accompanied by their guardians. / Fee: ¥3,300 for materials
TO APPLY: Send an *ofuku-hagaki* (return postcard) with applicant's name, address,

Please feel free to contact the International Exchange Lounge at 082-247-9715.

E-mail: golounge@pcf.city.hiroshima.jp

June 2017

telephone number, grade, age, the date he/she wishes to attend (participants can also write their 2nd choice of date), and the

workshop name **お天気工作教室「マイ百葉箱をつくろう！」** (*Otenki kousaku kyoushitsu: my hyakuyou-bako wo tsukurou!*) to the museum by Fri., Jun. 30. 11 people will be selected at random by a drawing of names for each time slot.

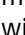

Hiroshima City Museum of History and Traditional Crafts

(2-6-20 Ujina-miyuki, Minami-ku 734-0015 / 253-6771 / 9:00 am - 5:00 pm / Closed on Mondays / Adults-¥100, Seniors & High school students-¥50, Junior high school students and under-Free / <http://www.hiroins-net.ne.jp/kyodo/>)

Special Exhibitions

- ◆ **Mingu** (Articles for everyday use) / Wed., Apr. 26 - Sun., Jul. 9
- ◆ **Ghost's Summer Holiday** / Fri., Jul. 21 - Sun., Aug. 27

Workshops, etc.

- ◆ **Indigo Dyeing a T-shirt (for adults)** / Sun., Jun. 18 / 1:00 pm - 3:00 pm / 18 years old and up / Fee: ¥400 (Admission fee for the museum is also required.)  Bring a T-shirt with you.
 - ◇ Applications will be accepted by phone or fax between Jun. 1 and 4. 20 people will be selected at random by a drawing of names.
- ◆ **Indigo Dyeing with T-shirt (for elementary school students)** / Sat., Jun. 24 / 1:00 pm - 3:00 pm / Elementary school students / Fee: ¥400 (Admission fee for the museum is also required.)  Bring a T-shirt with you.
 - ◇ Applications will be accepted by phone or fax between Jun. 1 and 4. 30 people will be selected at random by a drawing of names.
- ◆ **Make Tanabata (July 7, Star Festival) Ornaments** / Sat., Jul. 1 / 1:00 pm - 3:00 pm / From 4 years old to elementary school students (Preschoolers should be accompanied by their guardians). / Fee: ¥100 (Admission fee for the museum is also required.) ◇ Applications will be accepted by phone or fax between Jun. 1 and 4. 20 people will be selected at random by a drawing of names.

Special Summer Events

- ◆ **Play Corner** / Jul. 25, 26, 27 & 28; Aug. 1 & 2 / ① 10:00 am - 10:30 am ② 11:00 am - 11:30 am ③ 1:30pm - 2:00 pm ④ 2:30 pm - 3:00 pm / Participation fee: Free (admission fee for the museum is required.)

◇ The first 30 participants for each time slot will be accepted from 30 min. before each starting time on the day of.

- ◆ **Fire Music Band Concert** / Sun., Jul. 30 / 11:00 am - 11:30 am / Fee: Museum admission
 - ◇ Numbered tickets for the first 60 people will be distributed from 10:15 am on the day of.
- ◆ **Craft Workshops** / Weekdays between Aug. 3 and Aug. 18 & Fri., Aug. 11 / ① 10:00 am - 10:30 am ② 11:00 am - 11:30 am ③ 1:30 pm - 2:00 pm ④ 2:30 pm - 3:00 pm / Participation fee: Free (admission fee for the museum is required.)
 - ◇ The first 30 participants for each time slot will be accepted from 30 min. before each starting time on the day of.

Hiroshima City Cinematographic and Audio-Visual Library

(3-1 Moto-machi, Naka-ku 730-0011 / 223-3525 / 10:00am - 8:00pm (Tue.-Sat.), 10:00 am - 5:00 pm (Sun., national holidays & August 6) / Closed on Mondays / **35mm Film Showings** ⇒ Adults-¥510, Seniors & High school students-¥250, Junior high school students and under-Free; **Other Film Showings** ⇒ Adults-¥380, Seniors & High school students-¥180, Junior high school students and under-Free, Admission free for foreign students (Please show your student ID or the Hiroshima International Center Complimentary Pass.) / <http://www.cf.city.hiroshima.jp/eizou/>)

June Special Showings of Masterpieces of Japanese Film: Isuzu Yamada, an Actress (Screened in Japanese only)

Admission Fee:

Adults-¥510, Seniors (65 years old and up) & High school students-¥250, Junior high & Elementary school students-Free
★ Sat., Jun. 3, 10 & 17: Free admission for high school students

- **Sat., Jun. 3** / ① 10:30 am ② 2:00 pm ③ 6:00 pm

Aru yo no tonosama / 或る夜の殿様 (1946, Toho, 112 min., B&W, 35mm film) / Director: Teinosuke Kinugasa / Cast: Kazuo Hasegawa, Susumu Fujita, Isuzu Yamada, Hideko Takamine


- **Sun., Jun. 4** / ① 10:30 am ② 2:00 pm
Gendai-jin / 現代人 (1952, Shochiku (Ofuna), 111 min., B&W, 35mm film) / Director: Minoru Shibuya / Cast: Ryo Ikebe, Isuzu Yamada, So Yamamura, Toshiko Kobayashi

Please feel free to contact the International Exchange Lounge at 082-247-9715.

E-mail: golounge@pcf.city.hiroshima.jp

June 2017

- **Wed., Jun. 7** / ① 10:30 am ② 2:00 pm
③ 6:00 pm
**Onna hitori daichi wo yuku / 女ひとり大地を
行く** (1953, Kinuta Production, Nihon Tankou
Roudou Kumiai Hokkaido Chihou Honbu, 132 min.,
B&W, 35mm film) / Director: Fumio Kamei / Cast:
Isuzu Yamada, Hatae Kishi, Isao Numazaki, Jukichi
Uno
 - **Thurs., Jun. 8** / ① 10:30 am ② 2:00 pm
③ 6:30 pm
**Neko to Shozo to futari no onna / 猫と庄造と
二人のをんな** (1956, Tokyo Eiga, 104 min., B&W,
35mm film) / Director: Shiro Toyoda / Cast: Hisaya
Morishige, Kyoko Kagawa, Isuzu Yamada, Chieko
Naniwa
 - **Fri., Jun. 9** / ① 10:30 am ② 2:00 pm
③ 6:00 pm
Kumo no su jou / 蜘蛛巣城 (1957, Toho, 109
min., B&W, 35mm film) / Director: Akira Kurosawa /
Cast: Toshiro Mifune, Isuzu Yamada, Takashi
Shimura, Minoru Chiaki
 - **Sat., Jun. 10** / ① 10:30 am ② 2:00 pm
③ 6:00 pm
Nagareru / 流れる (1956, Toho, 116 min., B&W,
35mm film) / Director: Mikio Naruse / Cast: Kinuyo
Tanaka, Isuzu Yamada, Hideko Takamine, Haruko
Sugimura
 - **Sun., Jun. 11** / ① 10:30 am ② 2:00 pm
Donzoko / どん底 (1957, Toho, 125 min., B&W,
35mm film) / Director: Akira Kurosawa / Cast:
Toshiro Mifune, Isuzu Yamada, Kyoko Kagawa,
Ganjirou Nakamura
 - **Fri., Jun. 16** / ① 10:30 am ② 2:00 pm
③ 6:30 pm
Fuuryuu fukagawa uta / 風流深川唄 (1960, Toei
(Tokyo), 87 min., color, 35mm film) / Director: So
Yamamura / Cast: Hibari Misora, Kouji Tsuruta,
Isuzu Yamada, Haruko Sugimura
 - **Sat., Jun. 17** / ① 10:30 am ② 2:00 pm
③ 6:00 pm
Youjinbou / 用心棒 (1961, Toho, Kurosawa
Production, 110 min., B&W, 35mm film) / Director:
Akira Kurosawa / Cast: Toshiro Mifune, Tatsuya
Nakadai, Isuzu Yamada, Daisuke Katou
-  **Family Theater**
(Animated Films are in Japanese only)
-  **Admission Fee:**
Adults-¥510, Seniors (65 years old and up) &
High school students-¥250, Junior high &
Elementary school students-Free
- **Sun., Jun. 18** / ① 10:30 am ② 2:00 pm
**Andersen douwa Ningyo-hime (The Little
Mermaid) / アンデルセン童話 にんぎょ姫** (1975,
Toei Doga, 68 min., color, 35mm film) / Director:
Tomoharu Katsumata / Voice actor: Fumie Kashiya,
Mariko Miyagi, Taro Shigaki, Ichiro Nagai


 **Indian Films** (Screened in original language with
Japanese subtitles)

 **Admission Fee:**

Adults-¥380, Seniors (65 years old and up) &
High school students-¥180, Junior high &
Elementary school students-Free

★ Sat., Jun. 24: Free admission for high
school students

- **Wed., Jun. 21** / ① 2:00 pm ② 6:30 pm
Dabba (aka The Lunchbox) (2013, India, France,
Germany, 105 min., color, Blu-ray, Japanese
subtitles) / Director: Ritesh Batra / Cast: Irrfan
Khan, Nimrat Kaur, Nawazuddin Siddiqui
- **Thurs., Jun. 22** / ① 2:00 pm ② 6:00 pm
Aankhen (2001, India, 124 min., color, DVD,
Japanese subtitles) / Director: Vipul Amrutlal Shah
/ Cast: Amitabh Bachchan, Akshay Kumar, Arjun
Rampal, Sushmita Sen
- **Fri., Jun. 23** / ① 2:00 pm ② 6:00 pm
Nayak: The Real Hero (2001, India, 124 min.,
color, DVD, Japanese subtitles) / Director: S.
Shankar / Cast: Anil Kapoor, Rani Mukerji, Amrish
Puri, Sushmita Sen
- **Sat., Jun. 24** / ① 2:00 pm ② 5:30 pm
Anjaam (1993, India, 170 min., color, DVD,
Japanese subtitles) / Director: Rahul Rawail / Cast:
Shah Rukh Khan, Madhuri Dixit
- **Wed., Jun. 28** / ① 2:00 pm ② 6:30 pm
Stanley Ka Dabba (2011, India, 96 min., color,
Blu-ray, Japanese subtitles) / Director: Amole Gupte
/ Cast: Partho A. Gupte, Divya Dutta, Amole Gupte
- **Thurs., Jun. 29** / ① 2:00 pm ② 6:00 pm
Aaryamaan (2001, India, 116 min., color, DVD,
Japanese subtitles) / Director: Dinker Jani / Cast:
Mukesh Khanna, Kiran Kumar, Deepak Jethi, Manjeet
Kullar

 **ndjc: New Directions in Japanese Cinema**
(Screened in Japanese only)

 **Admission Fee:**

Adults-¥510, Seniors (65 years old and up) &
High school students-¥250, Junior high &
Elementary school students-Free

- **Sun., Jun. 25** / 10:30 am / 3 films, 77 min.
 - ① **LINE** (2007, 20 min., color, 35 mm film) /
Director & Writer: Hiroyuki Nakao /
Cinematography: Takayuki Shida / Cast: Eri Fuse,
Ryuhei Ueshima, Masanobu Katsumura, Eri
Yamazaki
 - ② **Oshare bangaichi / おしゃれ番外地** (2014,
27 min., color, 35 mm film) / Director & Writer:
Kousuke Takaya / Cinematography: Katsumi
Yanagijima / Cast: Wataru Takara, Takashika
Kobayashi, Rumi Hiiragi, Yoshikazu Ebisu

Please feel free to contact the International Exchange Lounge at 082-247-9715.

E-mail: golounge@pcf.city.hiroshima.jp

June 2017

- ③ Setagaya-ku, 39-chome / 世田谷区, 39 丁目 (2014, 30 min., color, 35 mm film) / Director & Writer: Seiji Yamashita / Cinematography: Osamu Fujiishi / Cast: Shouta Shimoda, Minami Hamabe, Erika Mabuchi, Hinako Saeki
- Sun., Jun. 25 / 2:00 pm / 3 films, 89 min.
- ① Michi-zure / ミチズレ (2014, 30 min., color, 35 mm film) / Director & Writer: Sonho Mun / Cinematography: Kiminori Ozawa / Cast: Motoki Ochiai, Yuuma Yamoto, Shou Yakumaru, Ken Takagi
- ② Daisan no hada / 第三の肌 (2009, 29 min., color, 35 mm film) / Director & Writer: Koutarou Wajima / Cinematography: Atsuhiko Nabeshima / Cast: Lily, Mitsuru Karahashi, Yuuya Kawamura, Yuuto Uemura
- ③ Lalala lundry / ラララ・ランドリー (2013, 30 min., color, 35 mm film) / Director & Writer: Kenichirou Suzuki / Cinematography: Osamu Ichikawa / Cast: Misato Tanaka, Kouhei Matsushita, Kazuya Uchida, Kumiko Abe
- Fri., Jun. 30 / 2:00 pm / 3 films, 90 min.
- ① Usotsuki onna no akenai yoake / 嘘つきお女の明けない夜明け (2009, 29 min., color, 35 mm film) / Director & Writer: Madoka Kumagai / Cinematography: Shougo Ueno / Cast: Yuko Miyamoto, Reiko Sato, Ryosuke Watabe, Shungiku Uchida
- ② Underwear Affair / アンダーウェア・アフエア (2010, 30 min., color, 35 mm film) / Director & Writer: Yukiko Sode / Cinematography: Hiromitsu Uehara / Cast: Kanako Higashi, Yuriko Ono, Mayuri Hirose, Go Ayano
- ③ UTAGE (2012, 30 min., color, 35 mm film) / Director & Writer: Tsubomi Yamashita / Cinematography: Shougo Ueno / Cast: Miho Tsumiki, Shigeru Okuse, Chika Otabe, Maho Yamada
- Fri., Jun. 30 / 6:30 pm / 3 films, 90 min.
- ① UFO shokudou / UFO 食堂 (2008, 30 min., color, 35 mm film) / Director & Writer: Satoshi Yamaguchi / Cinematography: Akiko Serizawa / Cast: Yuko Takayama, Koutaro Shiga, Hairi Katagiri, Takashi Yamanaka
- ② Pedaru no yukue / ペダルが行方 (2010, 30 min., color, 35 mm film) / Director & Writer: Junichi Kanai / Cinematography: Kiyoshi Ito / Cast: Kaori Tsuji, Seishu Uragami, Shinba Tsuchiya, Naoya Shimizu
- ③ Nde, zenbu, umisa nagashita. / んで、全部、海さ流した。 (2013, 30 min., color, 35 mm film) / Director & Writer: Teruaki Shouji / Cinematography: Shinji Kugimiya / Cast: Hanae Kan, Ryouya Shinoda, Tomomitsu Adachi, Kazuaki Hankai



Please feel free to contact the International Exchange Lounge at 082-247-9715.

E-mail: golounge@pcf.city.hiroshima.jp

June 2017

Library News

JUNE 2017

Recommended Books for This Month

Made in America

By Bill Bryson (Black Swan, 1998)

Silver Wedding

By Maeve Binchy (Dell Publishing, 1990)

Murder in Mesopotamia

By Agatha Christie (Harper, 2001)

Brave New World

By Aldous Huxley (HarperPerennial, 2006)

Tropic of Capricorn

By Henry Miller (Grove Press, c1961)

What other books should we add to our collection? Your suggestions are always welcome!



Library Corner

LOCATION: International Conference Center Hiroshima (ICCH), 1st Floor

T E L L : (082)247-9715

H O U R S : 9:00 am - 7:00 pm (From April 1 to September 30)

9:00 am - 6:00 pm (From October 1 to March 31)

C L O S E D : December 29th through January 3rd

BOOK LOAN POLICY:

Up to three books may be borrowed for a two-week period. To obtain an ICCH Library Card, you need to bring identification which has your address, and for foreign residents, your period of stay in Japan. (A Japanese driver's license, student identification card, passport or resident card is an acceptable form of identification.)



Please feel free to contact the International Exchange Lounge at 082-247-9715.

E-mail: golounge@pcf.city.hiroshima.jp

June 2017

Trio-Phone Service

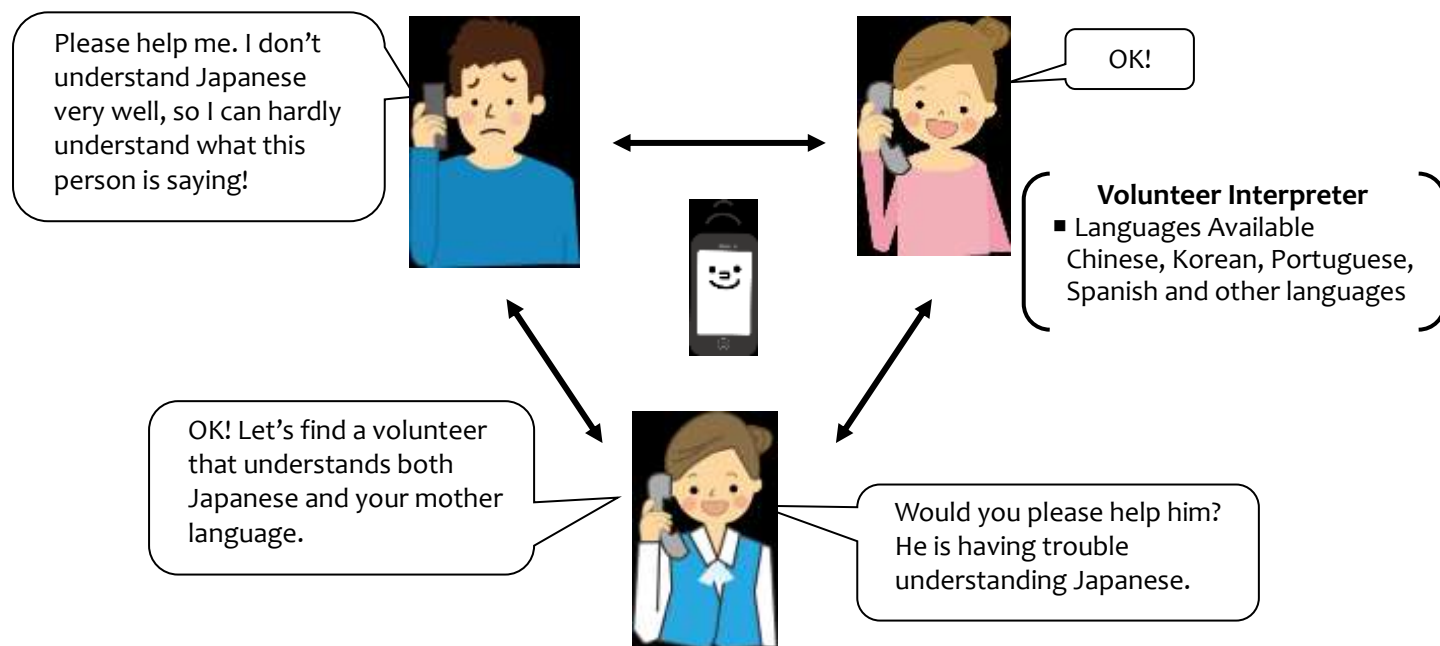
(Multilingual Interpretation over the Telephone)



What is Trio-Phone ?

Trio-Phone Service allows three people to have a conversation at the same time through the telephone. If you are having difficulties communicating in Japanese, call the International Exchange Lounge (082-247-9715).

A volunteer interpreter will help you through the Trio-Phone Service!



International Exchange Lounge (Available in English)

TEL: 082-247-9715

OPEN: 9:00am – 7:00pm (April 1 – September 30)

9:00am – 6:00pm (October 1 – March 31)

CLOSED: December 29 through January 3

[For more information]

Hiroshima Peace Culture Foundation

International Exchange Lounge

TEL: 082-247-9715 FAX: 082-242-7452 E-mail: golounge@pcf.city.hiroshima.jp

International Relations & Cooperation Division

TEL: 082-242-8879 FAX: 082-242-7452 E-mail: internat@pcf.city.hiroshima.jp

HP: <http://www.pcf.city.hiroshima.jp/ircd>

Please feel free to contact the International Exchange Lounge at 082-247-9715.

E-mail: golounge@pcf.city.hiroshima.jp

June 2017

使用済み切手とペットボトルのキャップで「小さな国際協力」 Assisting with International Cooperation with Used Stamps & PET Bottle Caps

The International Exchange Lounge collects used stamps to assist international cooperation activities. Through the volunteer groups, JOCS*, the collected stamps are sold to collectors to raise money. With the profit, items such as milk and medicine are purchased and doctors as well as nurses are dispatched throughout Asia and other continents. We also collect PET bottle caps in order to support the "Ecocap Action". The sales profits obtained by recycling caps are donated to the Japan Committee "Vaccines for the World's Children" (JCV).

*JOCS: Japan Overseas Christian Medical Cooperative Service

国際交流ラウンジでは国際協力に役立てるため、使用済み切手とペットボトルのキャップを収集しています。収集した切手は、公益社団法人日本キリスト教海外医療協力会（JOCS）へ送り、最終的に収集家によって購入されます。この収益金により、例えばアジア地域に医師や看護師を派遣することができます。また、収集したペットボトルのキャップは、キャップの再資源化で得た売上金を認定NPO法人「世界の子どもにワクチンを」日本委員会（JCV）へ寄付し、発展途上国の子どもたちにワクチンを届けるというエコキャップ活動に役立てられます。

HOW TO COLLECT:

☐ **Stamps** ⇒ When you cut stamps from envelopes, please leave 5 mm of paper around them. It is not necessary to remove them from the envelope. Torn or folded stamps cannot be accepted.

☐ **PET Bottle Caps** ⇒ Only PET bottle caps for drinks or mineral water are accepted. Please wash the caps and tear off the sticker if it has one. This is in order to avoid damaging the recycling machines. Things such as metal caps and pull-top tabs cannot be accepted.

収集方法:

☐ **切手** ⇒ 封筒に貼ってある切手を、周囲約5ミリの余白を残してカットしてください。切手を封筒からはがす必要はありません。破れや折れなどの傷のある切手は収集の対象にはなりません。

☐ **ペットボトルのキャップ** ⇒ 清涼飲料水とミネラルウォーター用ペットボトルのキャップが収集対象です。収集にあたっては機械の故障を防止するため、キャップを洗い、またシールなどがあればはがしてください。金属製の蓋やブルトップなどは収集対象外です。

For further information, please ask the staff at the International Exchange Lounge.

詳しい情報につきましては国際交流ラウンジカウンターまでお問い合わせください。



International Exchange Lounge / 国際交流ラウンジ
Tel. 082-247-9715 Fax. 082-242-7452
E-mail: golounge@pcf.city.hiroshima.jp



Please feel free to contact the International Exchange Lounge at 082-247-9715.

E-mail: golounge@pcf.city.hiroshima.jp

June 2017

Garbage Disposal Information

Separate garbage properly and take it to the collection site by 8:30am on the designated day. Please do NOT take garbage to the site on the night before. Garbage collection days vary depending on where you live and the category of the refuse. For further details, consult your local ward office or your neighbors to be sure of the proper disposal method. "Hiroshima 8", a handbook on how to separate garbage, and "Hiroshima City Garbage Disposal Guidelines for the 2017 fiscal year", a garbage chart with schedules of garbage collection days, are available at ward offices, branch offices and community halls. The Handbook and Guidelines are translated into English, Spanish, Portuguese, Chinese and Korean. These are also available at the International Exchange Lounge (International Conference Center Hiroshima), so please ask the staff if you need them.

ごみの正しい出しかた

ごみは種類ごとに分けて、決められた日の朝8時半までに、決められた場所へ整理して出してください。ただし、収集日の前夜には出さないでください。ごみを出す曜日や日は、あなたの住んでいる町とごみの種類によって決められています。詳しいことはお住まいの地域の区役所や近所の人に尋ねて、正しいごみの出しかたを確認しましょう。各区役所・出張所、公民館において、ごみの正しい出しかたについて書かれたハンドブックやごみの収集日の表（英語、スペイン語、ポルトガル語、中国語、韓国・朝鮮語）を配布しています。また、国際交流ラウンジでも配布していますので、ご希望の方はスタッフまで申し出てください。

..... We have charts for;

★ Naka-ku / 中区	★ Asaminami-ku / 安佐南区
★ Higashi-ku / 東区	★ Asakita-ku / 安佐北区
★ Nishi-ku / 西区	★ Aki-ku / 安芸区
★ Minami-ku / 南区	★ Saeki-ku / 佐伯区



Please feel free to contact the International Exchange Lounge at 082-247-9715.

E-mail: golounge@pcf.city.hiroshima.jp

June 2017

HIRO CLUB NEWS is published monthly and provides essential and entertaining information about life in Hiroshima City. It is available in print at the International Exchange Lounge, and online at our website:

<http://www.pcf.city.hiroshima.jp/ircd/english/hiroclubnews/index.html>

Selected information is also available in other languages including Chinese, Portuguese and Spanish.

HIRO CLUB NEWS は広島の生活情報やイベント等の情報を掲載している英語の月刊情報誌です。国際交流ラウンジにて配布しています。当課ホームページにも掲載しています。英語版の情報の一部を抜粋した中国語・ポルトガル語・スペイン語版も作成しています。

Edited and published by the Hiroshima Peace Culture Foundation

International Affairs Department, International Relations and Cooperation Division

Tel: (082) 242-8879, Fax: (082) 242-7452, E-mail: internat@pcf.city.hiroshima.jp

International Exchange Lounge

Tel: (082) 247-9715, E-mail: golounge@pcf.city.hiroshima.jp

Website: <http://www.pcf.city.hiroshima.jp/ircd/english/index.html>

編集・発行 公益財団法人広島平和文化センター国際部国際交流・協力課

〒730-0811 広島市中区中島町1番5号