

# Seasonal Event Information

## July 2017

★ Event schedules are subject to change.  
Please contact event organizers before you go.



### Events Held in Hiroshima City

**Sun., June 18 – Fri., July 7**

#### Ajisai (Hydrangea) Festival at Kannon-ji Temple

かんのんじ まつ  
観音寺あじさい祭り

**TIME:** 8:30 am – 5:00 pm ☀ 10:00 am – 5:00 pm on June 18

**PLACE:** Kannon-ji Temple, Saeki-ku

**ACCESS:** Get on a bus bound for Higashi-kannondai Danchi from Itsukaichi Streetcar Stop or JR Itsukaichi Station (JR Sanyo Line) south exit and get off at Kannondai Iriguchi. Walking time to destination: 5 minutes

**INQUIRIES:** Kannon-ji Temple 082-924-1340

- ▣ 5,000 hydrangeas of 350 varieties will bloom from the middle of June to the beginning of July at Kannon-ji Temple.
- ▣ On June 18, there will be an opening to public of *nehanzu* (a picture of Buddha entering Nirvana), and serving of *amacha* tea. *Matcha* tea will be served during the event period. *Fūrin*, a wind-bell festival will also be held.

**Every Wednesday between April 5 and December 27, 2017**

☺ July 5, 12, 19 & 26; August 2, 9, 16, 23 & 30 ✧ Special *kagura* performance will be held on August 19 (see below for more information).

#### Hiroshima Kagura

ひろしまけんみんぶんか ひろしまかぐら ていきこうえん  
広島県民文化センター「広島神楽」定期公演

**TIME:** 7:00 pm – 8:45 pm (The venue will open at 6:00 pm.)

**VENUE:** Hiroshima Kenmin Bunka Center, Ote-machi, Naka-ku (located near Hondori Shopping Street)

**ACCESS:** From Kamiya-cho-nishi or Hondori Streetcar Stops, walking time to destination is 3 minutes.

**TICKETS:** ¥1,000 ✧ All non-reserved seats

- ✧ Tickets will be sold from 5:00 pm on the performance date at the center.
- There are no advance tickets.

**INQUIRIES:** Hiroshima Kenmin Bunka Center 082-245-2311

#### ❖ “Hiroshima Kagura” Special Performance ❖

**DATE & TIME:** Sat., August 19 1:00 pm (The venue will open at noon.)

**VENUE:** Hiroshima Kenmin Bunka Center

**TICKETS:** ¥2,000 ✧ All reserved seats

- ✧ Advance tickets will be sold from Mon., July 3 at the center.
- ✧ Tickets will be sold from 11:00 am on the performance date at the center.

**Sun., July 2 & 16**

#### Hiroshima Minato Marché

ひろしまみなとマルシェ

**TIME:** 8:00 am – 2:00 pm

**PLACE:** Open Space between East and West Terminal of Hiroshima Port, Minami-ku

**ACCESS:** Take the No. 1, 3 or 5 streetcar bound for Hiroden Ujina or Hiroshima Port and get off at the last stop, Hiroshima Port.

**INQUIRIES:** Hiroshima Minato Marché Office 082-255-6646

- ▣ You can buy and taste locally-grown fresh vegetables and other food products at the marché.

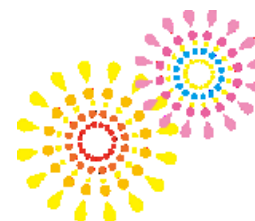
Please feel free to contact the International Exchange Lounge at 082-247-9715.

E-mail: [golounge@pcf.city.hiroshima.jp](mailto:golounge@pcf.city.hiroshima.jp)

July 2017

**Sun., July 9****Sister and Friendship City Day Event: Journée de Montréal**しまい ゆうこうとし ひ きねん  
姉妹・友好都市の日記念イベント モントリオールの日**TIME:** 1:30 pm – 3:45 pm**PLACE:** Fukuya Department Store, 6<sup>th</sup> Floor, Hiroshima Station location, Minami-ku**ACCESS:** From JR Hiroshima Station, walking time to destination is 3 minutes.**ADMISSION FEE:** Free**INQUIRIES:** Hiroshima Heiwa Bunka Center, Kokusai Kouryu Kyouryoku Ka (Hiroshima Peace Culture Foundation, International Relations and Cooperation Division) 082-242-8879

☑ This event includes a special performance by Ponta, a Canadian street performer, sales of Canadian products, an exhibition, etc.

**Sat., July 22****2017 Hiroshima Minato Fireworks Festival** ひろしま 2017広島みなと ゆめ はなびたいかい**TIME:** 8:00 pm – 9:00 pm ◆ Opening event: 7:00 pm – 7:40 pm**PLACE:** Hiroshima Port, Minami-ku**ACCESS:** Take a streetcar bound for Hiroshima-ko (Hiroden Ujina Line) and get off at Kaigan-dori. Walking time to destination: 15 minutes**INQUIRIES:** Hiroshima Matsuri Committee 082-247-6805☑ The fireworks will be canceled or postponed if it rains heavily on the 22<sup>nd</sup>.**Sun., July 30****Fiestas Patrias** どくりつきねんび  
ペルー独立記念日のイベント**TIME:** 11:00 am – 6:00 pm**PLACE:** Hiroshima-shi Ryugakusei Kaikan, 1-1 Nishi-koujin-machi, Minami-ku**ACCESS:** From JR Hiroshima Station (south exit), walking time to destination is 5 minutes.**FEE:** ¥1,000 (with one free drink) ◇ Children: Free**INQUIRIES:** CAFÉ Restaurant Peru and Brasil 080-3890-9507 (Vivi)

☑ This is an event to celebrate the Fiestas Patrias, Peru's Independence Day.

**Tue., August 1****Memorial Service for the Atomic Bomb Victims at Shukkeien Garden**げんぱくぎせいしやいれいくようしき  
原爆犠牲者慰霊供養式**PLACE:** Shukkeien Garden**ACCESS:** Take a streetcar on the Hiroden Hakushima Line and get off at Shukkeien-mae. Walking time to destination: 5 minutes**FEE:** Admission fee for the garden (Adults-¥260, University & High school students-¥150 )  
(Junior high & Elementary school students-¥100)**INQUIRIES:** Shukkeien Garden 082-221-3620**Sat., August 5 & Sun., August 6****Sumiyoshisan Festival** すみよしさん**TIME:** There is no specific starting time. Most people come in the evening.**PLACE:** Sumiyoshi Shrine, Sumiyoshi-cho, Naka-ku**ACCESS:** ① Take the No. 24 bus and get off at Sumiyoshi-cho. Walking time to destination: 5 minutes

② Take the No. 3, 6, or 10 bus and get off at Kako-machi. Walking time to destination: 3 minutes

**INQUIRIES:** Sumiyoshi Shrine 082-241-0104☑ Fireworks will be set off from 8:00 pm on both days. Rowing of an ancient-style boat in the river and *kagura* performance will also be held.

Please feel free to contact the International Exchange Lounge at 082-247-9715.

E-mail: [golounge@pcf.city.hiroshima.jp](mailto:golounge@pcf.city.hiroshima.jp)

July 2017



**Sun., August 6**

## **The 72<sup>nd</sup> Peace Memorial Ceremony**

だい かいへいわきねんしきてん  
第72回平和記念式典

**TIME:** 8:00 am – 8:45 am

**PLACE:** In front of the Cenotaph for the A-Bomb Victims, Peace Memorial Park

**INQUIRIES:** *Shimin Katsudo Suishin Ka* (Citizens Activities Promotion Division, the City of Hiroshima)  
082-504-2103

☐ On August 6<sup>th</sup>, at 8:15 am, at the sound of a bell rung by a representative from the bereaved families and one youth representative, a moment of silence is observed for the deceased. At that moment, factory sirens as well as temple and church bells are rung throughout the city, and Hiroshima is deeply wrapped in prayer. The Mayor of Hiroshima delivers a peace declaration addressed to the whole world at the ceremony. On this day, people recall what happened on August 6<sup>th</sup>, 1945, and in their prayers, ponder the meaning of peace.

### <NOTICE>

Reserved seating with receivers that will broadcast simultaneous English interpretations to non-Japanese speaking guests of the 2017 Peace Memorial Ceremony is now full. If you decide to apply now, you will be added to a waiting list.

Seating is available in the Unassigned Seating area. However, as seating is open to anyone on a first come, first served basis, you are encouraged to arrive early. Reservations are not accepted for this seating area. Please note that the International Conference Center will be open to the public and will display live footage (Japanese only, no interpretation receivers available) of the Ceremony in the Himawari Room of the 2<sup>nd</sup> basement floor.

Please see the Hiroshima City website (<http://www.city.hiroshima.lg.jp/www/contents/1493372490844/index.html>) or contact the International Relations Division of the City of Hiroshima (Tel: 082-504-2106 / e-mail: [kokusai@city.hiroshima.lg.jp](mailto:kokusai@city.hiroshima.lg.jp)) for more information.

**Sun., August 6**

## **Floating Paper Lanterns**

ピースメッセージとうろう<sup>なが</sup>流し

**TIME:** 6:00 pm – 9:30 pm ◆ Participants will be accepted from 6:00 am to 9:00 pm on the day of.

**PLACE:** • Chuo Area: South Side of the Atomic Bomb Dome

• Fukushima Area: South Side of the Shin-koi-bashi Bridge (east side)

• Koi Area: South Side of the Shin-koi-bashi Bridge (west side)

**ACCESS:** Get off at Genbaku Dome-mae Streetcar Stop.

**INQUIRIES:** *Toro-nagashi* Executive Committee 082-245-1448

*Hiroshima Matsuri linkai* 082-247-6805

☐ Paper lanterns will be floated down the river to console the souls of the deceased. Lantern (¥600) will be sold at four places inside the Peace Memorial Park.

**Sat., August 19 – Sun., August 27**

## **The 29<sup>th</sup> Affinis Music Festival 2017 in Hiroshima**

アフィニス<sup>なつ おんがくさい</sup>夏の音楽祭<sup>ひろしま</sup> 2017広島

**VENUE:** JMS Aster Plaza, Kako-machi, Naka-ku

**ACCESS:** Take the No. 24 bus and get off at Kako-machi. Walking time to destination: 2 minutes

### **SCHEDULE:**

#### ✧ Chamber Music Concerts

**DATE & TIME:** Aug. 22 – 24, 7:00 pm (Doors will open at 6:30 pm.)

#### ✧ The 29<sup>th</sup> Affinis Music Festival Orchestra Grand Concert

**DATE & TME:** Aug. 27, 3:00 pm (Doors will open at 2:00 pm.)

#### ✧ Promenade Concerts

**DATE & TME:** Aug. 22 – 24, 5:30 pm

Please feel free to contact the International Exchange Lounge at 082-247-9715.

E-mail: [golounge@pcf.city.hiroshima.jp](mailto:golounge@pcf.city.hiroshima.jp)

July 2017

🌀 **Seminars**

**DATE & TME:** Aug. 19 – 23 & 25 🎵 Some seminars are not open to public.

🌀 **Cultural Programs for Citizens** ✧ Free admission program

✦ **Lunchtime Concerts**

**DATE & TME:** Aug. 19 – 22, 12:30 pm

✦ **Mini Concerts**

**DATE & TME:** ① Aug. 20, 7:00 pm ② Aug. 21, 7:00 pm

**VENUES:** ① Aug. 20: Lobby, RIHGA Royal Hotel Hiroshima

② Aug. 21: Formerly the Bank of Japan Hiroshima Branch

✦ **AIUE Orchestra**

**DATE & TME:** Aug. 26, 3:00 pm

☺ This is an orchestra concert for elementary school students. Although admission is free, numbered ticket will be required. Applications for the numbered tickets will be accepted from Jul. 1 to Jul. 31.

✦ **AIUE Music Lesson**

**DATE & TME:** Aug. 26, 1:30 pm

☺ Participants will be selected from the participants of AIUE Orchestra.

✦ **Minna de Orchesra!**

**DATE & TME:** Aug. 24, 4:00 pm

☺ This is a participatory orchestra to commemorate the finale of the festival in Hiroshima. Please check the website for more information.



**TICKETS:**

❖ **Seminar:** One day pass-¥500 All program pass-¥1,000

☺ You can attend seminars with concert tickets.

❖ **Chamber Music Concert:** Adults-¥2,500 Students-¥1,000 (all non-reserved seats)

✧ Student tickets are only sold at JMS Aster Plaza and Kumin Bunka Centers and the Hiroshima Symphony Orchestra Office.

❖ **Grand Concert:** S-¥5,200 A-¥4,200 B-¥3,200 Students-¥1,500

✧ B seat tickets are not sold at JMS Aster Plaza and Kumin Bunka Centers

✧ Student tickets are only sold at the Hiroshima Symphony Orchestra office.

**TICKET SALE DATE:** Now on sale

**TICKET OFFICES:** EDION Hiroshima (SUNMALL, 1F), YAMAHA Music, Fukuya Department Stores (Hatchobori and Hiroshima Station), *Alpark* Tenmaya, JMS Aster Plaza, Kumin Bunka Centers, Hiroshima Symphony Orchestra Office & Chugoku Shimbun

**INQUIRIES:**

❖ About the Music Festival: Affinis Arts Foundation 03-5797-7135 E-mail: [info@affinis.or.jp](mailto:info@affinis.or.jp)  
HP: <http://www.affinis.or.jp/>

❖ About the Cultural Programs: Hiroshima City Bunka Zaidan 082-244-0750

E-mail: [bunka@cf.city.hiroshima.jp](mailto:bunka@cf.city.hiroshima.jp) HP: <http://affinis-hiroshima.com/>

❖ About the Grand Concert: Hiroshima Symphony Orchestra Office 082-532-3080

E-mail: [info@hirokyo.or.jp](mailto:info@hirokyo.or.jp) HP: <http://hirokyo.or.jp/>

**Sat., October 28**

**2017 Autumn Sumo Tour in Hiroshima (*Ozumo Aki Basho*)**

おおずもうあきばしよ  
大相撲安芸場所

**TIME:** 8:00 am – 3:00 pm

**VENUE:** Hiroshima Sun Plaza Hall, Nishi-ku

**ACCESS:** From JR Shin Inokuchi Station (JR Sanyo Line) or Shoko Center Iriguchi Streetcar Stop (Hiroden Miyajima Line), walking time to destination is 5 minutes.

Please feel free to contact the International Exchange Lounge at 082-247-9715.

E-mail: [golounge@pcf.city.hiroshima.jp](mailto:golounge@pcf.city.hiroshima.jp)

July 2017

**TICKETS:**1<sup>st</sup> Floor

- “Tamari” Seats (ringside)
  - S\* - ¥14,000/person    A\* - ¥13,000/person    B\* - ¥12,000/person
- Chair Seats
  - C - ¥9,000/person    D - ¥8,000/person

<Seats with “\*”> You can take a special sumo cushion home as a souvenir.

2<sup>nd</sup> Floor (all non-reserved seats)

- Chair Seats - ¥5,000/person    ■ Wheelchair Seatings: ¥20,000 (two seats)

**HOW TO ORDER TICKETS:**

Ticket orders will be accepted by e-mail, fax or *ofuku hagaki* (return postcard). Please see the website (<http://www.sumoaki-hiroshima.com/>) for more information. A lottery may be held if there are more applicants than tickets available.

◇ You can order a *bento* (lunch box; ¥2,000) with tea as well.

◇ You may not be allowed to bring any food or drink to the venue other than this *bento*.

**INQUIRIES:** Ozumo Aki Basho Office    082-292-5559    HP: <http://www.sumoaki-hiroshima.com/>

**Events Held on Miyajima**

**Fri., July 7**

## Seven Gods of Fortune Festival

 しちふくじんじゆふくさい  
 七福神授福祭


**TIME:** From 11:00 am onward

**PLACE:** Daishoin Temple, Miyajima

**ACCESS:** Get off at JR Miyajima-guchi Station (JR Sanyo Line) or the Miyajima Streetcar Stop (Hiroden Streetcar Miyajima Line), then take a ferry to Miyajima.

**INQUIRIES:** Daishoin Temple    0829-44-0111

☑ Buddhist music service in dedication to *Shichifukujin* (Seven Gods of Fortune) will be held.

**Sun., July 16**

## Miyajima Sundance 2017

**TIME:** 10:00 am – 8:00 pm

**PLACE:** Miyajima Tsutsumigaura Natural Park, Miyajima

**ACCESS:** Get off at JR Miyajima-guchi Station (JR Sanyo Line) or the Miyajima Streetcar Stop (Hiroden Streetcar Miyajima Line), then take a ferry to Miyajima. Then take a bus or walk 40 min. from Miyajima Pier. A bus to the park runs from Miyajima Pier.

**TICKETS:** Advance-¥2,000    At the door-¥3,000

◇ Free admission for junior high school students and under

**INQUIRIES:** Barcos Group    [info@barcosgroup.com](mailto:info@barcosgroup.com)    HP: <http://barcosgroup.com/sundance.html>

☑ Various events such as dance, DJ and live performances, foam party, etc. will be held.

**Thurs., July 27**

## Ichitate-sai

 いちたてさい  
 市立祭

**TIME:** From 9:00 am onward

**PLACE:** Itsukushima Shrine, Miyajima

**ACCESS:** Get off at JR Miyajima-guchi Station (JR Sanyo Line) or the Miyajima Streetcar Stop (Hiroden Streetcar Miyajima Line), then take a ferry to Miyajima.

**FEE:** Admission fee for Itsukushima Shrine

Adults & University students-¥300	High school students-¥200
Junior high & Elementary school students-¥100	

Please feel free to contact the International Exchange Lounge at 082-247-9715.

E-mail: [golounge@pcf.city.hiroshima.jp](mailto:golounge@pcf.city.hiroshima.jp)

July 2017

**INQUIRIES:** Itsukushima Shrine 0829-44-2020

☐ After the ritual ceremony, *bugaku* (traditional Japanese imperial court dance music) will be performed.

**Tue., August 8**

## Miyajima *Kangen-sai* Festival かんげんさい 管絃祭

**TIME:** From 3:00 pm onward

**PLACE:** Itsukushima Shrine and other shrines on Miyajima

**ACCESS:** Get off at JR Miyajima-guchi Station (JR Sanyo Line) or the Miyajima Streetcar Stop (Hiroden Streetcar Miyajima Line), then take a ferry to Miyajima.

**FEE:** Admission fee for Itsukushima Shrine

( Adults & University students-¥300 High school students-¥200  
Junior high school & Elementary school students-¥100 )

**INQUIRIES:** Itsukushima Shrine 0829-44-2020

☐ The *Kangen-sai* Festival began in the Heian Era (A.D.794 – A.D.1185). *Kangen* is traditional Japanese music played with *San-kan* (three flutes), *San-ko* (three drums) and *San-gen* (three strings). The *Kangen-bune* boat cruises while musicians on-board play this unique music through Otorii Gate to the Jigozen Shrine located on the opposite bank. It then proceeds to Nagahama and Omoto Shrines on Miyajima Island and returns to Itsukushima Shrine. Itsukushima *Kangen-sai* Festival is one of the three largest boat festivals in Japan.

**Tue., August 8**

## Lantern Parade in Miyajima ぎょうれつ ちょうちん行列

**TIME:** From 7:30 pm onward

**PLACE:** Lanterns will be given out for free in front of Nagahama Shrine.

**ACCESS:** Get off at JR Miyajima-guchi Station (JR Sanyo Line) or the Miyajima Streetcar Stop (Hiroden Streetcar Miyajima Line), then take a ferry to Miyajima.

**INQUIRIES:** *Miyajima Kanko Kyokai* (Tourist Association) 0829-44-2011

☐ This parade uses lanterns to welcome the *Kangen-bune* boat to Nagahama Shrine on its return from Jigozen Shrine. After the boat reaches Nagahama Shrine, participants will parade towards Itsukushima Shrine.

**Thurs., August 10**

## Shiman Hassen-nichi (48,000-day) Kannon Festival しまんはっせんにちかんのんたいさい 四万八千日観音大祭

**TIME:** From 10:00 am onward

**PLACE:** Daishoin Temple, Miyajima

**ACCESS:** Get off at JR Miyajima-guchi Station (JR Sanyo Line) or the Miyajima Streetcar Stop (Hiroden Streetcar Miyajima Line), then take a ferry to Miyajima.

**INQUIRIES:** Daishoin Temple 0829-44-0111

☐ A ritual for Kannon, one of the most popular Buddhist Gods in Japan, will be held. It is said that a visit to the temple on this day gives you merit for 48,000 days.

**Thurs., August 17 & Fri., August 18**

## Miyajima *Odori* (Dance) Festival みやじまおど 宮島踊りの夕べ

**TIME:** From 7:30 pm onward

**PLACE:** Mikasa-no-hama Beach (In front of Itsukushima Shrine, Miyajima)

**ACCESS:** Get off at JR Miyajima-guchi Station (JR Sanyo Line) or the Miyajima Streetcar Stop (Hiroden Streetcar Miyajima Line), then take a ferry to Miyajima.

**INQUIRIES:** *Miyajima Geino Hozon-kai* Office 0829-44-0757



Please feel free to contact the International Exchange Lounge at 082-247-9715.

E-mail: [golounge@pcf.city.hiroshima.jp](mailto:golounge@pcf.city.hiroshima.jp)

July 2017

▣ Miyajima *Odori* is a type of traditional Japanese *bon* dance that originated about 500 years ago to console the souls of the pirates that sank to the bottom of the Seto Inland Sea.

## Events Held Outside of Hiroshima City



### Sat., Sun. & national holidays

#### Sake Brewery Opening ようこそ醸華町西条 じょうかまちさいじょう

**PLACE:** Sake Breweries, Higashihiroshima City

**ACCESS:** Get off at JR Saijo Station (JR Sanyo Line).

**FEE:** Free

**INQUIRIES:** Saijo Sakagura-dori Kanko Annai-jo

Tel. & Fax 082-421-2511 (10:00am – 4:00pm, closed on Mondays)

▣ Some sake breweries open to the public on Sat., Sun. & national holidays. Signboards with the words “ようこそ醸華町西条” (“*Yokoso Jokamachi Saijo*”) will be placed in front of the opened breweries.

### Thurs., June 1 – Sun., September 10

#### Cormorant Fishing in Miyoshi みよしうかい 三次の鵜飼

**TIME:** From 7:30 pm onward (Cruising will be canceled if it rains heavily.)

◇ Please come to the reception by 7:00pm.

**PLACE:** Tokaichi Shinsui Koen (Park), Miyoshi City

**ACCESS:** From JR Miyoshi Station (JR Geibi Line), walking time to destination is 15 minutes.

**PASSENGER FARE:**

◆ Sunday – Thursday:

- Regular fare: Junior high school students and up-¥3,000 Elementary school students-¥1,500
- Fare with a chair: Junior high school students and up-¥3,500 Elementary school students-¥1,750

◆ Friday & Saturday:

- Regular fare: Junior high school students and up-¥3,300 Elementary school students-¥1,650
- Fare with a chair: Junior high school students and up-¥3,800 Elementary school students-¥1,900

◇ Please note that reservations are required. Reservations are accepted until 5:00 pm on the day before the day you want to go.

◇ Reservations will not be accepted on August 19 (Miyoshi fireworks festival).

**RESERVATIONS & INQUIRIES:** Miyoshi City Kanko Kyokai (Tourist Association)

0824-63-9268 E-mail: miyo-344@bz01.plala.or.jp

▣ Fishermen start out at night with lanterns and cormorants on small wooden boats. The birds are trained to catch *Ayu* (sweetfish). Very unique white-colored cormorants (a type of water fowl, usually with black feathers) were donated by Yaan in Szechuan, China, Miyoshi's friendship city, and can be seen only in Miyoshi.

### Sat., July 8

#### Otebi Festival てびしんじ お手火神事

**TIME:** From 8:00 pm onward

**PLACE:** Nunakuma Shrine, Tomo-cho, Fukuyama City

**ACCESS:** Take a bus from JR Fukuyama Station (JR Sanyo Line) and get off at Tomo-no-ura. Walking time to destination: 10 minutes

**INQUIRIES:** Nunakuma Shrine 084-982-2050

▣ *Otebi* is a fire festival in which men carry three torches weighing about 150kg and offer them to the shrine. This is a traditional festival which has been held since the Kamakura Period (A.D. 1185 – A.D. 1393). This is designated as a Fukuyama City intangible folklore cultural asset.

Please feel free to contact the International Exchange Lounge at 082-247-9715.

E-mail: golounge@pcf.city.hiroshima.jp

July 2017

**July 7 (Fri.), 8 (Sat.), 9 (Sun.) & 10 (Mon.)****Onomichi Antique Market**おのみちだいこつとうさい  
尾道大骨董祭**TIME:** 8:00 am – 4:00 pm ✧ 8:00 am – noon on Monday**PLACE:** *Tennen Onsen Onomichi Fureai no Sato* (spa facilities), Mitsugi-cho, Onomichi City**ACCESS:** ① From JR Shin-Onomichi Station (JR Sanyo *Shinkansen* Line), driving time by taxi to destination is 25 minutes.

② From Onomichi-kita I.C. on the Chugoku Yamanami Expressway, driving time to destination is 10 minutes.

③ Take a free shuttle bus to the spa from JR Higashi Onomichi Station (JR Sanyo Line).

Departure Time (one round service a day)

• JR Higashi Onomichi Station: 8:55 am

• Spa: 3:10 pm

**INQUIRIES:** *Iroha* Antique Market Office 090-3155-8229**Mon., July 10****Sakagura Walking Tour (Free)**さかぐら  
酒蔵のまち てくてくガイド**TIME:** Tour will start on an as-needed basis between 10:00 am and 11:00 am.**MEETING PLACE:** *Saijo Sakagura-dori Kanko Annai-jo* (Tourist Information Center), Higashihiroshima City**ACCESS:** Get off at JR Saijo Station (JR Sanyo Line).**PARTICIPATION FEE:** Free**INQUIRIES:** *Saijo Sakagura-dori Kanko Annai-jo* Tel. & Fax 082-421-2511☐ A volunteer guide will show you *Sakagura-dori* (Sake Brewery Street). During the tour you will be able to taste *sake* and the purified water that is used to make it.☐ A regular guided tour (fee-based) is also held every day except on the 10<sup>th</sup>. Advance reservations are required by a week before the day you wish to An English speaking guide is available. Please contact the *Saijo Sakagura-dori* Tourist Information Center in advance.**Fri., July 14 – Sun., July 16****Tenjin-sai Festival**てんじんさい  
天神祭**TIME:** ♦ Jul. 14: From 5:00 pm onward ♦ Jul. 15: From 4:00 pm onward ♦ Jul. 16: From 2:00 pm onward**PLACE:** Misode Tenmangu Shrine, Onomichi City**ACCESS:** From Ropeway Sanroku Station, walking time to destination is 2 minutes.

👉 Ways to get to Ropeway Sanroku Station 👈

① From JR Onomichi Station (JR Sanyo Line), walking time to destination is 15 minutes.

② Take a bus from JR Onomichi Station and get off at Nagae-guchi.

**INQUIRIES:** Misode Tenmangu Shrine 0848-37-1889☐ This is Misode Tenmangu Shrine's summer festival. People carrying *mikoshi*, a portable *shinto* shrine, will go up and down the 55 steps to the shrine.**Fri., July 14 – Sun., July 16****Gion Matsuri Festival at Susanoo Shrine**ぎおんまつり  
祇園祭**SCHEDULE:** ♦ Jul. 14 – Pre event ♦ Jul. 15 & 16 – Main events (carrying a *mikoshi*)**PLACE:** Susanoo Shrine, Fukuyama City**ACCESS:** From JR Kamidote Station (JR Fukuen Line), walking time to destination is 3 minutes.**INQUIRIES:** Susanoo Shrine 0847-51-2958**Sat., July 15****Kurahashi Kentoshi-sen Festival**けんとうしせん  
くらはし遣唐使船まつり**TIME:** 4:00 pm – 9:00 pm ♦ Fireworks festival will also be held from 8:15 pm.**PLACE:** Katsurahama Beach, Kurahashi-cho, Kure City

Please feel free to contact the International Exchange Lounge at 082-247-9715.

E-mail: [golounge@pcf.city.hiroshima.jp](mailto:golounge@pcf.city.hiroshima.jp)

July 2017



**ACCESS:** Take a bus from JR Kure Station (JR Kure Line) and get off at Katsurahama Onsen Kan.

**INQUIRIES:** Kurahashi Shimin Center 0823-53-1111

☐ It is said that Katsurahama beach was one of the ports of call of *Kentoshi*, envoys to the Tang Court in China between the 7<sup>th</sup> and the 9<sup>th</sup> century.

**Sat., July 15**

**Mizu Matsuri (Water Festival)** み お ちやう みずまつ  
水尾町の水祭り



**TIME:** 5:00 pm – 9:00 pm

**PLACE:** Around Kumano Gongen Shrine and Mio-no-shoji, Onomichi City

**ACCESS:** From JR Onomichi Station (JR Sanyo Line), walking time to destination is 15 minutes.

**INQUIRIES:** Mamoru Kai (Imagawa Chaho) 0848-37-3766

☐ This is a festival handed down from the Edo Period (A.D.1603 – A.D.1868). The festival will be postponed until Sun., July 16 if it rains heavily on the 15<sup>th</sup>.

**Sun., July 16**

**Tadanoumi Gion Festival & Mikoshi Parade** ただのうみぎおんまつり ぎやうじ  
忠海祇園祭とみこし行事

**TIME:** Highlight of the Event – around 3:00pm

**PLACE:** Around JR Tadanoumi Station, Takehara City

**ACCESS:** Get off at JR Tadanoumi Station (JR Kure Line).

**INQUIRIES:** Tadanoumi Kaihatsu Yahata Shrine 0846-26-0859

☐ Men who are and will be 20 years of age this year carry *mikoshi*, a portable shrine, and parade through the street of the town all day. The festival is designated as one of Hiroshima Prefecture's intangible folklore cultural assets.

**Thurs., July 20**

**Hatsuka-no-ichi Market** はつか いち  
廿日の市



**TIME:** 8:00 am – 10:00 am

**PLACE:** The open Space in front of Hatsukaichi City Hall, Hatsukaichi City

**ACCESS:** From Hatsukaichi Shiyakusho-mae (Hiroden Streetcar Miyajima Line), walking time to destination is 5 minutes.

**INQUIRIES:** Hatsukaichi Kanko Kyokai (Tourist Association) 0829-31-5656

**Sat., July 22**

**Onomichi Sumiyoshi Fireworks Festival** すみよしはなび  
おのみち住吉花火まつり

**TIME:** 7:30 pm – 9:15 pm ◆ Festival at Sumiyoshi Shrine will start from 2:00 pm onward.

**PLACE:** Onomichi Suido, Onomichi City

**ACCESS:** From JR Onomichi Station (JR Sanyo Line), walking time to destination is 15 minutes.

**INQUIRIES:** Onomichi Sumiyoshi Kai 0848-22-2165

☐ The fireworks will be postponed until July 23 (Sun.) or 24 (Mon.) if it rains heavily on the 22<sup>nd</sup>.

**Sat., July 22**

**2017Nuta Hongo Summer Festival** ぬたほんごうまつり  
2017沼田本郷夏まつり

**TIME:** 3:30 pm – 9:00 pm ☆ Fireworks festival will be held in the evening.

**PLACE:** Summer Festival – Around Mihara City Hall, Hongo Branch, Mihara City

Fireworks Festival – The right bank of Nuta-gawa River (upper stream of *Kohara-bashi* Bridge),  
Mihara City

**ACCESS:** From JR Hongo Station (JR Sanyo Line), walking time to destination is 5 minutes.

Please feel free to contact the International Exchange Lounge at 082-247-9715.

E-mail: [golounge@pcf.city.hiroshima.jp](mailto:golounge@pcf.city.hiroshima.jp)

July 2017

**INQUIRIES:** Executive Committee 0848-86-5717 (Mon. – Fri., 9 am – noon)

☐ Fireworks festival, concert, bazaar, etc.

☐ The festival will be postponed until Sun., July 23 if it rains heavily on the 22<sup>nd</sup>.

**Sat., July 22**

**Kurose Fureai Summer Festival** くろせ ふれあい夏まつり

**TIME:** 4:00 pm – 9:00 pm

**PLACE:** Around *Kurose Shogai Gakushu Center*, Kurose-cho, Higashihiroshima City

**ACCESS:** ① From JR Higashihiroshima Station (JR Sanyo Line), drive time to destination is 25 minutes.

② Take a bus from JR Saijo Station (JR Sanyo Line) and get off at Naka Kurose. Walking time to destination: 5 minutes

**INQUIRIES:** Executive Committee 0823-82-3075

**Sat., July 22**

**Tadanoumi Tenjin Yo-ichi Summer Festival** ただのうみてんじんよいち 忠海天神夜市

**TIME:** 5:00 pm – 9:00 pm

**PLACE:** In front of JR Tadanoumi Station, Takehara City

**ACCESS:** Get off at JR Tadanoumi Station (JR Kure Line).

**INQUIRIES:** *Tadanoumi Hohoemi Town Shoten Kai* 0846-26-1325

☐ Traditional local performing arts, kiosks, etc.

**Sat., July 22**

**Kinoe Ju-shichi-ya-sai (Festival & Boat Race) & Fireworks Festival**

じゅうしちやさい かいでんまきょうそう かいじょうはなびたいかい  
きのえ十七夜祭 (権伝馬競争)・海上花火大会

**TIME:** ♦ *Ju-shichi-ya-sai* Festival: 9:00 am – 8:40 pm ♦ Fireworks Festival: 8:00 pm – 8:40 pm

**PLACE:** *Ju-shichi-ya-sai* Festival – Kinoe Area, Osaki-kamijima-cho

Fireworks Festival – Around Kinoe Port, Osaki-kamijima-cho

**ACCESS:** Get off at JR Takehara Station (JR Kure Line) and go to the Takehara Port by bus or on foot.

Then get on a ferry and get off at Tenma Port. Walking time to destination: 10 minutes

**INQUIRIES:** *Osaki-kamijima-cho Kanko Kyokai* (Tourist Association) 0846-65-3455

☐ The fireworks will be postponed until Sun., July 23 if it rains heavily on the 22<sup>nd</sup>.

**Sat., July 29**

**Kure Fireworks Festival** くれ なつ かいじょうはなびたいかい  
呉の夏まつり「海上花火大会」

**TIME:** 8:00 pm – 8:45 pm

**PLACE:** Around Kure Port, Kure City

**ACCESS:** From JR Kure Station (JR Kure Line), walking time to destination is 20 minutes.

**INQUIRIES:** *Kure Matsuri Kyokai* 0823-21-0151

☐ This will be canceled if it rains heavily on the 29<sup>th</sup>.

**Sat., July 29**

**Miyoshi Kinsai Festival** みよし 三次きんさいまつり

**TIME:** 4:00 pm – 10:00 pm ♦ Parade will start from 5:15 pm onward.

**PLACE:** Around Miyoshi-machi and Tokaichi Chuo-dori Street, Miyoshi City

**ACCESS:** From JR Miyoshi Station (JR Geibi Line), walking time to destination is 10 minutes.

**INQUIRIES:** Executive Committee 0824-62-8868



Please feel free to contact the International Exchange Lounge at 082-247-9715.

E-mail: [golounge@pcf.city.hiroshima.jp](mailto:golounge@pcf.city.hiroshima.jp)

July 2017

**Sat., July 29****Innoshima Suigun Fireworks Festival** すいぐんはなびたいかい  
いんのしま水軍花火大会**TIME:** 8:30 pm – 9:00 pm**PLACE:** Around Habu Port, Innoshima, Onomichi City**ACCESS:** ① From Innoshima-kita I.C. on the Shimanami Kaido Expressway, drive time to destination is 15 minutes.

② Take an express bus (Flower Liner) from Hiroshima Bus Center (Sogo Hiroshima Department Store, 3F) and get off at the last stop, Habuko-mae.

③ Take a bus bound for Habu Port from JR Onomichi Station (JR Sanyo Line) and get off at the last stop, Habu-ko (a 50 min. bus ride).

**INQUIRIES:** Executive Committee 0845-26-6212☑ The fireworks will be postponed until Sun., July 30 if it rains heavily on the 29<sup>th</sup>.**Sat., July 29 & Sun., July 30****Bingo Kokufu Festival** びんごこくふ  
備後国府まつり**PLACE:** ♦ Festival: Central area of Fuchu City ♦ Fireworks festival: *Fuchu Gakuen Kita* Ground**ACCESS:** From JR Fuchu Station (JR Fukuen Line), walking time to destination is 5 minutes.**INQUIRIES:** Executive Committee 0847-45-0678☑ A fireworks show will be held on the 30<sup>th</sup> (7 pm – 9 pm).**Sun., July 30****Summer Festival at Etajima 2017** えたじま  
サマーフェスタ江田島2017**PLACE:** *Kaijo Jiei-tai, Dai-ichi Jukka Gakko* (Japan Marine Self-Defense Force, First Service School and Officer Candidate School), Etajima City**ACCESS:** Get on a ferry at Hiroshima Port and get off at Koyo Port. It is 5 min. by taxi or bus from there.**INQUIRIES:** *Kanko Shinko Ka*, Etajima City Hall 0823-43-1644

☑ A fireworks show will be held in the evening.

**Sat., August 5 & Sun., August 6****Takehara Sumiyoshi Festival** たけはらすみよし  
竹原住吉まつり**PLACE:** Sumiyoshi Shrine, Takehara City**ACCESS:** From JR Takehara Station (JR Kure Line), walking time to destination is 15 minutes.**INQUIRIES:** Executive Committee 0846-22-0298

☑ This is a traditional summer festival in Takehara City that has been observed since the Edo period.

**Events Held in Yamaguchi Prefecture****Thurs., June 1 – Sun., September 10****Cormorant Fishing in Iwakuni** きんたいきょう うかい  
錦帯橋の鵜飼**TIME:** 7:00 pm – 9:00 pm**PLACE:** Nishiki-gawa River & Kintaikyo Bridge, Iwakuni City**ACCESS:** Get off at JR Iwakuni Station (JR Sanyo Line) and take a bus bound for Kintaikyo Bridge. Get off at Kintaikyo (a 20 min. bus ride).**PASSENGER FARE:** Adults-¥2,000 Children-¥1,000

◇ The fare will be temporarily changed on August 5, the day of the fireworks festival.

**RESERVATIONS & INQUIRIES:** *Kintaikyo Ukai Office* 0827-28-2877

☑ Originating about 400 years ago, cormorant fishing under lit lanterns is a summer tradition in Iwakuni.

Please feel free to contact the International Exchange Lounge at 082-247-9715.

E-mail: [golounge@pcf.city.hiroshima.jp](mailto:golounge@pcf.city.hiroshima.jp)

July 2017

**Sat., July 15****Iwakuni Minato-matsuri Fireworks Festival**いわくにこうまつりはなびたいかい  
岩国港みなと祭花火大会**TIME:** 8:00 pm – 9:00 pm**PLACE:** Around *Iwakuni-ko* Port Building, Iwakuni City**ACCESS:** Take a bus bound for Otake from JR Iwakuni Station (JR Sanyo Line) and get off at Shin-minato.**INQUIRIES:** Executive Committee 0827-23-1055☐ The fireworks will be postponed until Sun., July 16 if it rains heavily on the 15<sup>th</sup>.**Thurs., July 20****Otake & Waki Fireworks Festival**おおたけ わき かわ はなびたいかい  
大竹・和木 川まつり花火大会**TIME:** 8:00 pm – 9:00 pm**PLACE:** Ozegawa River, Waki-cho (Yamaguchi Pref.) & Otake City (Hiroshima Pref.)**ACCESS:** ① From JR Waki Station (JR Sanyo Line), walking time to destination is 8 minutes.

② From JR Otake Station (JR Sanyo Line), walking time to destination is 15 minutes.

**INQUIRIES:** *Otake Kanko Kyokai* (Tourist Association) 0827-52-3105

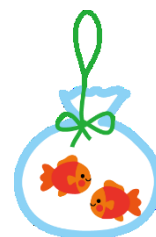
Waki-cho Town Hall 0827-52-2136

☐ The fireworks will be postponed until Fri., July 21 if it rains heavily on the 20<sup>th</sup>.**July 29 (Sat.), August 5 (Sat.) & 13 (Sun.)** ◆ Main event will be held on Aug. 13.**Yanai Kingyo Chochin (Goldfish Lantern) Festival**やないきんぎよまつり  
柳井金魚ちょうちん祭り**TIME:** ◆ Jul. 29: 6:00 pm – 8:00 pm ◆ Aug. 5: Not finalized ◆ Aug. 13: 4:30 pm – 9:00 pm**PLACE:** Around JR Yanai Station (JR Sanyo Line), Yanai City**ACCESS:** Get off at JR Yanai Station (JR Sanyo Line).**INQUIRIES:** *Shoko Kanko Ka*, Yanai City Hall 0820-22-2111

☐ Two thousand goldfish-shaped lanterns will be hung up and there will be old-style vendors, creating an Edo Period atmosphere.

☐ Fireworks will go off at the finale (8:45 pm – 9:00 pm) on the 13<sup>th</sup>.**Sat., August 5****Nishiki-gawa River Water Festival**にしきがわみず さいてん  
錦川水の祭典**TIME:** ◆ Festival: 9:00 am – 9:30 pm

◆ Fireworks Festival: 8:00 pm – 9:30 pm

**PLACE:** Around Kintaikyo Bridge, Iwakuni City**ACCESS:** Take a bus bound for Kintaikyo Bridge from JR Iwakuni Station (JR Sanyo Line) and get off at Kintaikyo (a 20 min. bus ride). ✧ Extra buses will run from the station on the event day.**INQUIRIES:** *Iwakuni City Kanko Kyokai* (Tourist Association) 0827-41-2037 (8:30 am – 5:15 pm)☐ The fireworks will be postponed until Sat., August 26 if it rains on the 5<sup>th</sup>.☐ An *Iwakuni taiko* (traditional Japanese drums) performance will also be held in the evening.

Please feel free to contact the International Exchange Lounge at 082-247-9715.

E-mail: [golounge@pcf.city.hiroshima.jp](mailto:golounge@pcf.city.hiroshima.jp)

July 2017