



hiro club new

hiro club news

For your cultural life in Hiroshima

***Uchiage-hanabi* (fireworks) 打ち上げ花火**

Japanese fireworks are now regarded as the finest in the world. Fireworks (the kanji for *hanabi* = “flower fire”) are an integral part of Japanese summer festivities, both in the form of massive fireworks displays (*hanabi-taikai*) and small personal parties in gardens and streets. To the Japanese, there is something refreshing and even ‘cooling’ about fireworks on hot, humid summer evenings. Large displays are held nationwide in July and August, many of them above rivers or the sea, where there is a refreshing breeze and beautiful reflections in the water. They feature a great variety of exquisite *uchiage-hanabi*, giant bursts of color, as well as *shikake-hanabi*, set piece fireworks with special effects.

Large Japanese fireworks are distinguished by their round shape (*tama*) and their ability to explode radially in perfect globes (*warimono*). Many also change colors because of the use of carefully layered powder.

It was the Shogun Ieyasu who started the ball rolling. He was introduced to simple fireworks by the Portuguese and launched the national love of fireworks with a display in 1613. Through the 18th and 19th centuries, rival fireworks makers developed ever more sophisticated versions (Abstracted from 『ニッポン風物詩』, pp. 172-175, IBCパブリッシング).

Many fireworks festivals will also be held at various places in Hiroshima. The Hiroshima Minato Fireworks Festival held on July 22 at the Hiroshima Port and the Miyajima Fireworks Festival held on August 26 are the biggest ones in Hiroshima. The fireworks will be shot from offshore near the floating *Torii* gate in the Miyajima Fireworks Festival. The sight of Itsukushima Shrine and the floating *Torii* gate profiled by the fireworks is worth seeing.

July 2017

July 2017



- ★ *City Office Notices*
- ★ *Hiroshima Peace Culture Foundation News*
- ★ *Movie Theaters*
- ★ *Bilingual TV Programs*
- ★ *Concerts & Plays*
- ★ *Museums*
- ★ *Sports*
 - *Hiroshima Toyo Carp Schedule 2017*
 - *Sanfrecce Hiroshima FC Game Schedule 2017*
- ★ *Events*
 - *Seasonal Event Information*
 - *Municipal Facilities*
- ★ *Lounge & Library*
 - *Library News*
 - *Trio-phone Service*
(Multilingual interpretation over the telephone)
 - *Assisting with International Cooperation*
 - *Garbage Disposal*



***Hiroshima Peace Culture Foundation
International Exchange Lounge***

1-5 Nakajima-cho, Naka-ku, Hiroshima 730-0811

E-mail: golounge@pcf.city.hiroshima.jp

Tel. 082-247-9715 Fax. 082-242-7452

★ Visit the HIRO CLUB NEWS WEBSITE for information online. ★

URL: <http://www.pcf.city.hiroshima.jp/ired/english/hiroclubnews/index.html>

City Office Notices

City Office Notices contains selected information from the Hiroshima City Newsletter, *ひろしま市民と市政 Hiroshima Shimin to Shisei*. City Office Notices is published twice a month and available in print at the International Exchange Lounge, and online at our website:
<http://www.pcf.city.hiroshima.jp/ircd/english/hiroclubnews/index.html>

July 1, 2017

Topics

- * Sister & Friendship Cities Event: Montreal Day (Canada)
- * Chuo Park Family Pool Open from July 1
- * Subsidy for Private Kindergarten Fees
- * Seeking Volunteers for the Peace Memorial Ceremony on August 6
- * Temporary Welfare Benefit for Low-income Households
- * Take Advantage of Routine Vaccination for Children

Sister & Friendship Cities Event: Montreal Day (Canada)

(Free, no reservation required)

モントリオールの日 (P6)

DATE & TIME: Sunday, July 9, 1:30pm – 3:45pm

PLACE: At Fukuya Department Store next to Hiroshima Station (9-1 Matsubara-cho, Minami-ku)

PROGRAMS: Complementary drink, exhibition on Montreal, commemorative performance

INQUIRIES: *Kokusai Koryu Kyoryoku Ka* (International Relations & Cooperation Division), Hiroshima Peace Culture Foundation Tel. 242-8879 Fax. 242-7452

Chuo Park Family Pool Open from July 1

中央公園ファミリープール 7月1日利用開始 (P5)

PERIOD: Until Thursday, August 31

OPEN HOURS: 9:00am – 6:00pm (Admission is required by 5:00pm.)

ADMISSION FEE: Adults: 780 yen 65 and older: 340 yen

Students/Children (Including senior high school students): 340yen

INQUIRIES: *Midori Ikimono Kyokai* Tel. 211-0063 Fax. 228-1891

Subsidy for Private Kindergarten Fees

私立幼稚園就園奨励費を支給します (P5)

ELIGIBILITY: A guardian who has a child attending a private kindergarten*. There are further conditions that are required to be met, including income.

*Except for kindergartens implementing the Comprehensive Support System for Children and Child-rearing

TO APPLY: Apply at the attending private kindergarten before Friday, July 7. Application forms are available at the kindergarten.

Edited and published by the Hiroshima Peace Culture Foundation
 International Affairs Department, International Relations and Cooperation Division
 Tel: (082) 242-8879, Fax: (082) 242-7452, E-mail: internat@pcf.city.hiroshima.jp
 International Exchange Lounge
 Tel: (082) 247-9715, E-mail: golounge@pcf.city.hiroshima.jp
 Website: <http://www.pcf.city.hiroshima.jp/ircd/english/index.html>
 編集・発行 公益財団法人広島平和文化センター国際部国際交流・協力課

INQUIRIES: *Kyoiku linkai Gakuji Ka* (Municipal Board of Education)
Tel. 504-2469 Fax. 504-2509
or kindergartens

Seeking Volunteers for the Peace Memorial Ceremony on August 6

平和記念式典ボランティア募集(P5)

WHO: Those between 15 and 30 years old (Junior high school students are not eligible)

DATE & TIME: Sunday, August 6, 6:30am – 10:30am

ACTIVITIES: (1) Serving hand towels (2) Guiding attendees to the ceremony

APPLICATION: Contact the *Gion Komin-kan* (Community Hall)

The first 100 people for (1) and 50 people for (2) will be accepted.

INQUIRIES: *Gion Komin-kan* Tel. 874-5181 Fax. 874-5182 (Closed on Tuesdays and July 17)

Explanatory Meeting for Volunteers

DATE & TIME: Monday, July 31 or Tuesday, August 1 7:00pm – 9:00pm

Applicants are required to attend one of these dates.

PLACE: *Kokusai Seinen Kaikan* (International Youth House)
(4-17 Kako-machi, Naka-ku)

Temporary Welfare Benefit for Low-income Households

臨時福祉給付金(経済対策分)の申請はお済みですか(P4)

The Temporary Welfare Benefit (*Rinji Fukushi Kyufukin*) will be provided to eligible households upon their application. The City Hall mailed the application form to eligible households in mid-May. If you receive an application, please do not forget to apply by mailing the application form with the attached return envelope postmarked by Monday, July 31. For details, please contact the Information Service Center.

INQUIRIES: Please call 0120-082232 (Japanese language only)

Chiiki Fukushi Ka (Local Welfare Services Division) Tel. 504-2766 Fax. 504-2169

Take Advantage of Routine Vaccination for Children

予防接種で感染症を防ぎましょう(『市民と市政』2017.6.15号P2)

To protect your children against infectious diseases (see the list below), please take advantage of routine vaccination services. For details, please contact your local public health center.

NOTE: Bring your Maternal & Child Health Handbook (*Boshi-techo*) to the clinic. Keeping vaccination records is essential to manage your child's health.

Edited and published by the Hiroshima Peace Culture Foundation
International Affairs Department, International Relations and Cooperation Division
Tel: (082) 242-8879, Fax: (082) 242-7452, E-mail: internat@pcf.city.hiroshima.jp
International Exchange Lounge
Tel: (082) 247-9715, E-mail: golounge@pcf.city.hiroshima.jp
Website: <http://www.pcf.city.hiroshima.jp/ircd/english/index.html>
編集・発行 公益財団法人広島平和文化センター国際部国際交流・協力課

Vaccines	Prevents	Symptoms of the disease
Hepatitis B	Hepatitis, Cirrhosis and Liver cancer	Hepatitis is the leading cause of cirrhosis and liver cancer.
Hib	Purulent meningitis, Sepsis and Pneumonia	Infants are at great risk of infection of Haemophilus influenza type b (Hib) and pneumococcal bacteria. A severe systemic infection may occur.
Childhood pneumococcal vaccine		
Combination vaccine (4 components)	Diphtheria, Pertussis, Tetanus and Polio	These are very serious life-threatening infections.
BCG	Tuberculosis (TB) disease	TB still affects 20,000 people each year. Children infected with TB are at risk of developing severe diseases such as TB meningitis.
Measles & Rubella	Measles & Rubella	Measles is a very contagious disease. It can cause severe life-threatening symptoms. Rubella can cause serious birth defects in a developing baby's eyes and years if a woman is infected while she is pregnant.
Varicella	Chickenpox	Chickenpox is a very contagious disease. It causes rash and fever. It can cause convulsion, encephalitis or pneumonia.
Japanese encephalitis	Japanese encephalitis	It is a disease spread through mosquito bites. It is a serious disease that may cause death or late effects including nerve damage by developing encephalitis.

INQUIRIES: *Hoken Iryo Ka* (Public Health & Medical Service Division)

Tel. 504-2622 Fax. 504-2258

Or the following *Hoken Centers* (Public Health Center)

Ward Office	Telephone	Fax	Ward Office	Telephone	Fax
Naka	504-2528	504-2175	Asaminami	831-4942	870-2255
Higashi	568-7729	264-5271	Asakita	819-0586	819-0602
Minami	250-4108	254-9184	Aki	821-2809	821-2832
Nishi	294-6235	233-9621	Saeki	943-9731	923-1611

Edited and published by the Hiroshima Peace Culture Foundation
 International Affairs Department, International Relations and Cooperation Division
 Tel: (082) 242-8879, Fax: (082) 242-7452, E-mail: internat@pcf.city.hiroshima.jp
 International Exchange Lounge
 Tel: (082) 247-9715, E-mail: golounge@pcf.city.hiroshima.jp
 Website: <http://www.pcf.city.hiroshima.jp/ircd/english/index.html>
 編集・発行 公益財団法人広島平和文化センター国際部国際交流・協力課

Hiroshima Peace Culture Foundation News

Event schedules are subject to change. Please contact event organizers to confirm listed information.

July 2017

Hiroshima's Sister/Friendship Cities Event Montreal Day

(No admission fee, no reservation required)

Organized by the 2016 Montreal Day Event Executive Committee

With Cooperation from FUKUYA CO. LTD.

With Support from The Embassy of Canada to Japan & Délégation générale du Québec à Tokyo

DATE & TIME: Sunday, July 9, 1:30pm – 3:45pm

PLACE: At Fukuya Department Store next to Hiroshima Station,
6F "Maruchi Area"

☆Stage Events

Opening Ceremony

Montreal Quiz (with prizes!)

Commemorative Performance by Ponta

Ticket Raffle

☆ Complementary Drink (for first 400 guests)

☆ Exhibition on Montreal & Canada

☆ Sale & Display of Canadian Products

INQUIRIES: International Relations and Cooperation Division,
Hiroshima Peace Culture Foundation Tel. 242-8879



CIR Question & Answer Day

Are you looking for advice about Hiroshima?

Come in for a chat with our C.I.R., Benjamin Swallow!

DATE & TIME: Wednesday, July 26 1:30pm – 3:30pm

PLACE: International Exchange Lounge

(International Conference Center Hiroshima 1F, 1-5 Nakjima-cho, Naka-ku)

RESERVATIONS ARE REQUIRED: Reservations can be made in person or by telephone at the
International Exchange Lounge TEL. 247-9715 (Lounge open hours 9:00am – 7:00pm)

INQUIRIES: International Exchange Lounge, International Relations and Cooperation Division,
Hiroshima Peace Culture Foundation TEL. 247-9715

Movie Theaters July 2017



Here is a general list of movies being shown in theaters around Hiroshima. Due to unpredictable changes in scheduling, listings are subject to change without notice. Foreign films are usually in their original language with Japanese subtitles. When not specified, the admission is **¥1,800** for adults. Theaters offer various kinds of admission discount services, so please inquire at each theater for more information.

SALON CINEMA

[Hiroshima Toei Plaza Bldg. 8F, 16-10 Hatchobori, Naka-ku / Tel: 082-962-7772 / URL: <http://www.johakyu.co.jp/>]

Until Jul. 21 **Beauty and the Beast** / '17 USA
 Until Jul. 7 **L'avenir** / '16 France, Germany
 Until Jul. 7 **Captain Fantastic** / '16 USA
 Jul. 1 – 14 **The Wailing** / '16 Korea
 Jul. 15 – 21 **Desierto** / '15 Mexico, France
 From Jul. 15 **Personal Shopper** / '16 France

HATCHOZA

[Fukuya Department Store Hatchobori 8F, 6-26 Ebisu-cho, Naka-ku / Tel: 082-546-1158 / URL: <http://www.johakyu.co.jp/>]

Until Jul. 7 **The Music of Strangers** / '15 USA
 From Jul. 15 **Demolition** / '15 USA

YOKOGAWA CINEMA Tel : 231-1001

[3-1-12 Yokogawa-cho, Nishi-ku / Tel: 082-231-1001 / URL: <http://yokogawa-cine.jugem.jp/>]

Jul. 1 – 14 **La Terre Abandonne** / '16 Belgium
 Jul. 8 – 21 **Talentine** / '09 Malaysia
 Jul. 8 – 14 **Author: The JT LeRoy Story** / '16 USA
 Jul. 15 – 31 **Dukhtar** / '14 Pakistan, USA, Norway
 Jul. 15 – 30 **葉問 3 / Ip Man 3** / '16 China, Hong Kong
 (except Jul. 27 & 28)
 Jul. 15 – 21 **Bastille Day** / '15 France, USA

AEON CINEMA HIROSHIMA

[Hiroshima Danbara Shopping Center 6F, 1-3-52 Danbara-minami, Minami-ku / Tel : 082-261-3770 / URL: <http://www.aeoncinema.com/cinema/hiroshima/>]

From Jun. 1 **Logan** / '17 USA
 From Jun. 9 **Patriots Day** / '16 USA

Until Jul. 7 **The Light between Oceans** / '16 USA, Australia, New Zealand
 From Jun. 17 **King Arthur: Legend of the Sword** / '17 UK, Australia, USA
 From Jun. 24 **Lo Chiamavano Jeeg Robot** / '15 Italy
 Until Jul. 7 **La Fille Inconnue** / '16 Belgium, France
 Until Jul. 7 **The Handmaiden** / '16 Korea
 From Jun. 24 **Hacksaw Ridge** / '16 Australia, USA
 From Jul. 1 **Pirates of the Caribbean: Dead Men Tell No Tales** / '17 USA
 From Jul. 15 **Cars 3** / '17 USA
 From Jul. 28 **The Mummy** / '17 USA
 From Aug. 4 **Transformers: The Last Knight** / '17 USA
 From Aug. 11 **Spider-Man: Homecoming** / '17 USA
 From Aug. 25 **Wonder Woman** / '17 USA

109 CINEMAS

[Alpark 3F (north bldg.), 4-7-1 Kusatsu-minami, Nishi-ku / Tel: 05700-002-109 / URL: <http://www.109cinemas.net/Hiroshima>]

From Apr. 21 **Beauty and the Beast** / '17 USA
 From Jun. 1 **Logan** / '17 USA
 From Jun. 17 **King Arthur: Legend of the Sword** / '17 UK, Australia, USA
 From Jun. 24 **危城 / Call of Heroes** / '16 China
 From Jun. 24 **我的特工爺爺 / The Bodyguard** / '16 Hong Kong, China
 From Jun. 24 **Hacksaw Ridge** / '16 Australia, USA
 From Jul. 1 **Pirates of the Caribbean: Dead Men Tell No Tales** / '17 USA
 From Jul. 8 **Life** / '17 USA
 From Jul. 15 **Cars 3** / '17 USA
 From Jul. 15 **Power Rangers** / '17 USA, Canada

Please feel free to contact the International Exchange Lounge at 082-247-9715.

E-mail: golounge@pcf.city.hiroshima.jp

July 2017

From Jul. 28 **The Mummy** / '17 USA
 From Aug. 4 **Transformers: The Last Knight**
 / '17 USA
 From Aug. 11 **Spider-Man: Homecoming**
 / '17 USA

TOHO CINEMAS MIDORII

[Fuji Grand 3F, 1-5-2 Midorii, Asaminami-ku / Tel : 082-831-8060 / URL: <http://www.tohotheater.jp/>
 Adults-¥1,800, University students-¥1,500, From preschoolers (3 years old and under) to High school students-¥1,000,

From Apr. 21 **Beauty and the Beast** /
 '17 USA
 From Jun. 1 **Logan** / '17 USA
 From Jun. 16 **鉄道飛虎 / Railroad Tigers** /
 '16 China
 From Jun. 17 **King Arthur: Legend of the**
Sword / '17 UK, Australia, USA
 From Jun. 24 **Hacksaw Ridge** /
 '16 Australia, USA
 From Jul. 1 **Pirates of the Caribbean:**
Dead Men Tell No Tales /
 '17 USA
 From Jul. 15 **Cars 3** / '17 USA
 From Jul. 15 **Power Rangers** / '17 USA,
 Canada
 From Aug. 4 **Transformers: The Last Knight**
 / '17 USA
 From Aug. 11 **Spider-Man: Homecoming**
 / '17 USA

HIROSHIMA WALD 11

[AEON Mall Hiroshima Fuchu 4F, 2-1-1 Osu, Fuchu-cho, Aki-gun / Tel : 082-561-0600 / URL: <http://kinezo.jp/pc/wald11>]

From Apr. 21 **Beauty and the Beast** /
 '17 USA
 From Jun. 1 **Logan** / '17 USA
 From Jun. 9 **Patriots Day** / '16 USA
 From Jun. 10 **The Duel** / '16 USA
 From Jun. 17 **King Arthur: Legend of the**
Sword / '17 UK, Australia, USA
 From Jun. 24 **Hacksaw Ridge** /
 '16 Australia, USA
 From Jun. 24 **Free Fire** / '16 UK, France
 From Jun. 24 **Going in Style** / '17 UK
 From Jul. 1 **Pirates of the Caribbean:**
Dead Men Tell No Tales /
 '17 USA
 From Jul. 1 **Revolt** / '17 South Africa, UK
 From Jul. 7 **John Wick: Chapter 2** /
 '17 USA
 From Jul. 8 **Life** / '17 USA
 From Jul. 15 **Cars 3** / '17 USA
 From Jul. 15 **Power Rangers** / '17 USA,
 Canada

From Jul. 28 **The Mummy** / '17 USA
 From Aug. 4 **Transformers: The Last Knight**
 / '17 USA
 From Aug. 11 **Spider-Man: Homecoming**
 / '17 USA
 From Aug. 19 **Baby Driver** / '17 USA
 From Aug. 25 **Wonder Woman** / '17 USA
 From Sept. 9 **Dunkirk** / '17 UK, USA,
 France

Movie Showings at 10 am in the Morning

Jun. 24 – Jul. 7 **All About Eve** / '50 USA
 Jul. 8 – 21 **Scent of Woman** / '92 USA
 Jul. 22 – Aug. 4 **Good Will Hunting** / '97 USA
 Aug. 5 – 11 **Roman Holiday** / '53 USA
 Aug. 12 – 18 **Sabrina** / '54 USA
 Aug. 19 – 25 **Love in the Afternoon** /
 '57 USA
 Aug. 26 – Sept. 8 **How to Steal a Million** /
 '66 USA
 Sept. 9 – 22 **Doro no kawa** / '81 Japan
 Sept. 23 – Oct. 6 **L'argent de Poche** /
 '76 France
 Oct. 7 – 20 **Norainu** / '49 Japan
 Oct. 21 – Nov. 3 **Tengoku to jigoku** /
 '63 Japan

T-JOY HIGASHI HIROSHIMA

[Fuji Grand Higashi Hiroshima 3F, 4405 Misonou, Saijo-cho, Higashi Hiroshima-shi / Tel : 082-493-6779 / URL: http://kinezo.jp/pc/t-joy_hiroshima]

From Apr. 21 **Beauty and the Beast** /
 '17 USA
 From Jun. 1 **Logan** / '17 USA
 From Jun. 17 **King Arthur: Legend of the**
Sword / '17 UK, Australia, USA
 From Jun. 24 **Hacksaw Ridge** /
 '16 Australia, USA
 From Jul. 1 **Pirates of the Caribbean:**
Dead Men Tell No Tales /
 '17 USA
 From Jul. 15 **Power Rangers** / '17 USA,
 Canada
 From Jul. 15 **Cars 3** / '17 USA
 From Aug. 4 **Transformers: The Last Knight**
 / '17 USA
 From Aug. 11 **Spider-Man: Homecoming**
 / '17 USA
 From Aug. 25 **Wonder Woman** / '17 USA
 From Sept. 9 **Dunkirk** / '17 UK, USA,
 France



Please feel free to contact the International Exchange Lounge at 082-247-9715.

E-mail: golounge@pcf.city.hiroshima.jp

July 2017



Bilingual TV Programs

July 2017

#1: NHK Sogo	#4: Hiroshima TV
#2: NHK E Tele	#5: Home TV
#3: RCC	#8: TSS

◆ Some changes may occur because of special programming.

NEWS

Monday - Sunday

NHK News 7 / 7:00 pm – 7:30 pm (#1)

Monday - Friday

News Watch 9 / 9:00 pm – 10:00 pm (#1)

REGULAR PROGRAMS

Thursday

Through the Wormhole / 10:00 pm – 10:45 pm (#2)

TED / 11:00 pm – 11:25 pm (#2)

✧ Rerun: Sat., 1:25 am – 1:52 am

Saturday

Dramatic Earth (Documentary Program) /

7:00 pm – 7:45 pm (#2)

✧ Rerun: Mon., midnight – 12:45 am

DRAMAS

Monday

Hawaii Five-O Season 1 ('10 USA) / 1:25 am – 2:20 am (#4)

Wednesday

Game Shakers ('15 USA) / 7:25 pm – 7:50 pm (#2)

Saturday

The Thundermans ('13 USA) / 6:25 pm – 6:50 pm (#2)

Sunday

Downton Abbey Season 6 ('15 UK, USA) / 11:00 pm – midnight (#1) ✧ Until the 9th

Victoria ('16 UK) / 11:00 pm – midnight (#1)

✧ From the 30th

ANIMATIONS

Saturday

Curious George / 8:35 am – 9:00 am (#2)

SpongeBob SquarePants / 6:00 pm – 6:25 pm (#2)

Sunday

Thomas & Friends / 5:30 pm – 5:50 pm (#2)

MOVIES

8th Rush Hour 3 / '07 USA / 1:33 am – 3:23 am (#3)

9th Big / '88 USA / 2:08 am – 4:00 am (#3)

8th Pirates of the Caribbean: On Stranger Tides / '11 USA / 9:00 pm – 11:10 pm (#8)

22nd Open Water 2: Adrift / '04 USA / 1:48 am – 3:48 am (#3)

23rd Salt / '10 USA / 1:50 am – 3:35 am (#8)

23rd Lake Placid vs. Anaconda / '15 USA / 2:08 am – 4:00 am (#3)

29th 葉問 / Ip Man / '08 Hong Kong / 1:33 am – 3:33 am (#3)

30th Snowpiercer / '13 Korea, USA, France / 1:50 am – 3:45 am (#8)

30th 葉問 2 / Ip Man 2 / '10 Hong Kong / 2:08 am – 4:00 am (#3)

SPORTS

Tennis

■ Wimbledon: The 2017 Championships (#1)

✧ Check the official website for more information
(URL: <http://www.wimbledon.com/index.html>)

4th – 7th 12:10 am – 4:20 am

8th 12:10 am – 4:15 am

8th 11:27 pm – 4:25 am

11th & 12th 12:10 am – 3:56 am

13th 12:40 am – 3:56 am

14th 12:10 am – 3:00 am

15th 12:10 am – 3:51 am

15th 10:00 pm – midnight

16th 10:00 pm – 12:25 am

Sumo

■ 2017 July Grand Sumo Tournament (#1)

July 9 – 23

9th 3:05 pm – 6:00 pm

10th – 14th 3:08 pm – 6:00 pm

15th – 17th 3:05 pm – 6:00 pm

18th – 21st 3:08 pm – 6:00 pm

22nd & 23rd 3:05 pm – 6:00 pm

Golf

■ 2017 U.S. Women's Open Championship (#5)

✧ Broadcasted in Japanese only

14th 2:55 am – 4:55 am

15th 3:25 am – 5:50 am

16th 5:00 am – 8:00 am

17th 3:10 am – 4:55 am

■ The 146th Open Royal Birkdale (#5)

✧ Broadcasted in Japanese only

20th & 21st 11:15 pm – 4:00 am

22nd 11:05 pm – 4:00 am

23rd 9:58 pm – 2:40 am

Please feel free to contact to the International Exchange Lounge at 082-247-9715.

E-Mail: golounge@pcf.city.hiroshima.jp

July 2017

■ Soccer

■ J. League World Challenge 2017: URAWA Red

Diamonds x Borussia Dortmund (#8)

◇ Broadcasted in Japanese only

15th 7:00 pm – 9:09 pm

■ Swimming

■ The 17th FINA World Championships Budapest

2017 (#5) ◇ Broadcasted in Japanese only

16th 1:35 am – 3:00 am

17th 1:10 am – 2:40 am

18th – 20th 12:50 am – 2:21 am

20th & 21st 6:00 pm – 8:00 pm

22nd 6:56 pm – 8:54 pm

23rd 4:00 am – 5:20 am

24th 2:40 am – 4:55 am

25th 12:20 am – 2:21 am

26th – 28th 12:20 am – 2:40 am

29th 12:20 am – 2:45 am

30th 12:05 am – 2:40 am

31st 12:05 am – 2:45 am

■ Volleyball

■ FIVB World Grand Prix (#1)

◇ Broadcasted in Japanese only

16th 1:05 pm – 3:00 pm



Please feel free to contact to the International Exchange Lounge at 082-247-9715.

E-Mail: golounge@pcf.city.hiroshima.jp

July 2017

Concerts & Plays



Ticket Offices

- ① EDION Play Guide (SUNMALL, 1F) (Kamiya-cho, Naka-ku; Tel. 247-5111)
- ② YAMAHA Music (Kamiya-cho, Naka-ku; Tel. 244-3779 Closed on the 1st & the 3rd Wednesdays)
- ③ Hiroshima Yume Plaza (Hondori, Naka-ku; Tel. 544-1122 Closed on Wednesdays)
- ④ Kawai Hiroshima (2-2-6 Kamiya-cho, Naka-ku; Tel. 243-9291 Closed on Mondays)
- ⑤ Fukuya Department Store, Hatchobori (7F) (Ebisu-cho, Naka-ku; Tel. 246-6111)
- ⑥ Fukuya Department Store, Hiroshima Station (7F) (Matsubara-cho, Minami-ku; Tel. 568-3111)
- ⑦ Alpark Tenmaya (3F) (Inokuchi-myoin, Nishi-ku; Tel. 501-1111)
- ⑧ Hiroshima Arts Gakki (Hatchobori, Naka-ku; Tel. 227-6601)

Date / Starting Time (Opening Time) / Venue / Ticket Price / Tickets Go on Sale Date / Ticket Offices / Inquiries

♪ Event schedules are subject to change.

Please contact the event office before you go. ♪

July

★ Kiev Classic Ballet

3rd Mon. / ① 4:00 pm (3:30 pm) ② 6:30 pm (6:00 pm) / Ueno Gakuen Hall / ¥3,800 / Now on sale / Lawson, e+, Ticket PIA, ①⑥ / TSS Office 082-253-1010 (Mon. – Fri., 10 am – 6 pm), CARAVAN 092-732-8858

★ I Musici

5th Wed. / 6:30 pm / Hiroshima Kokusai Kaigijo (International Conference Center Hiroshima), Phoenix Hall / S-¥8,000 A-¥6,000 / Now on sale / ①, e+, Lawson / Hiroshima TV Event Information Center 082-249-1218 (Mon. – Fri., 10am – 6pm)

★ Hiroshima Symphony Orchestra: The 372nd Subscription Concert

(Toshiro Mayuzumi: *Mandala Symphony*; Pauer: *Horn Concerto*; Schumann: *Symphony No. 2 in C major Op. 61*)

7th Fri. / 6:45 pm (5:45 pm) / Hiroshima Bunka Gakuen HBG Hall / S-¥5,200 A-¥4,700 B-¥4,200 Students-¥1,500 (Student tickets are only sold at the Hiroshima Symphony Orchestra Office.) / Now on sale / ①②⑤⑥⑦⑧, Lawson, Ticket PIA, Chugoku Shimbun & Hiroshima Symphony Orchestra Office / Hiroshima Symphony Orchestra Office 082-532-3080 E-mail: info@hirokyo.or.jp

♪ Conductor: Tatsuya Shimono / Horn: Radek Baborák

★ Tsukemen Live 2017 ~ Recharge ~

8th Sat. / 3:00 pm (2:30 pm) / Hiroshima Kokusai Kaigijo (International Conference Center Hiroshima), Phoenix Hall / ¥4,800 / Now on sale / ①, Lawson, Ticket PIA, e+ / UNION Music Office 082-247-6111

♪ Tsukemen is classical instrumental group consisting of two violins and one piano.

NEW!!

★ Music History vol. II-2: Viennese Classics

9th Sun. / 2:00 pm / Aki Kumin Bunka Center / Adults-¥2,500 High school students and under-¥1,500 / Now on sale / ①, Aki Kumin Bunka Center / 090-7508-2012

★ Summer Concert

9th Sun. / 6:15 pm (5:45 pm) / Higashi Kumin Bunka Center / ¥1,000 (all non-reserved seats) / Now on sale / ②④ / 090-7997-0274 (Mukai)

NEW!!

★ Flute, Flute & Piano Concert

13th Thurs. / 6:45 pm (6:15 pm) / Elisabeth University of Music, Xavier Hall / Adults-¥3,000 Students-¥2,000 / Now on sale / ①④⑧, Hatsukaichi Bunka Hall Sakurapia / Ogihara Music Planning 082-962-8660
E-mail: info@ogiharamp.co.jp

NEW!!



Please feel free to contact the International Exchange Lounge at 082-247-9715.

E-mail: golounge@pcf.city.hiroshima.jp

July 2017

★ **The Royal Concert****Johann Sebastian Bach: Die Kunst der Fuge BWV 1080 by a Violin and Three Viola da Gambas**

14th Fri. / 7:00 pm (6:30 pm) / Hiroshima Nagarekawa Church / Advance-¥3,500 At the door-¥4,000 High school students and under-¥1,000 / Ticket reservations & Inquiries: Hiroshima Gamba Concert E-mail: peb00743@nifty.com, 082-923-8332 (Inohara), 090-3375-3640 (Nakano)

¥1,500 / Please ask the concert organizer for ticket information. / 082-286-7555 (Kuroda) E-mail: dfsxk910@ybb.ne.jp

NEW!!

★ **An Evening of Italian Opera IV****Madama Butterfly (by G. Puccini)**

22nd Sat. / 2:00 pm (1:30 pm) / JMS Aster Plaza / ¥3,000 (all non-reserved seats) / Now on sale / JMS Aster Plaza / Executive Committee 082-878-4813 (Katayama); JMS Aster Plaza 082-244-8000

NEW!!

★ **Jazz Concert: Duo at Gewand Halle**

15th Sat. / 3:00 pm (2:00 pm) / Gewand Halle / Advance-¥6,000 At the door-¥6,500 / Now on sale / SUNTORY BAR MINT, Endo Wind Instrument Store / 090-9460-4307, E-mail: jazzduo@otakazutaka.com

★ **Tokyo Ska Paradise Orchestra:****2017 Tour "TOKYO SKA Has No Border"**

15th Sat. / 6:00 pm (5:00 pm) / Ueno Gakuen Hall / ¥6,200 / Now on sale / Lawson, Ticket PIA, e+, ① / Candy Promotion Hiroshima 082-249-8334

★ **Kanji Kozuta & Hayu Kozuta****~ 1 Piano – 4 Hands Concert ~**

16th Sun. / 3:00 pm (2:30 pm) / lifeone221 / Advance: Adults-¥3,500 Students-¥2,500 Family pair tickets-¥5,000; At the door: Adults-¥4,000 Students-¥3,000 Family pair tickets-¥6,000 / Please ask the concert organizer for ticket information. / lifeone music 082-922-0028 E-mail: lifeone@cyber.ocn.ne.jp

NEW!!

★ **Elisabeth Youth Music Academy Summer Concert**

17th Mon. / 2:00 pm (1:30 pm) / Elisabeth University of Music, Cecilia Hall / ¥1,000
✧ Free admission for preschoolers / Now on sale / ①⑥, Elisabeth Youth Music Academy / Elisabeth Youth Music Academy 082-225-8003 E-mail: ongakuen@eum.ac.jp

NEW!!

★ **Kasumi Kimoto (oboe) & Emi Murata (clarinet) Duo Recital**

17th Mon. / 6:30 pm (6:00 pm) / Aki Kumin Bunka Center / Adults-¥800 Students-¥500 / Please ask the concert organizer for ticket information. / 080-6323-9881 (Kimoto)

NEW!!

★ **Michael Doneda & Le Quan Ninh: The 30 Years Tour in Japan MLT Trio Japan Tour July 2017**

17th Mon. / 7:00 pm (6:30 pm) / Minami Kumin Bunka Center / Advance: Adults-¥3,000 Students-¥1,000; At the door: Adults-¥3,500 Students-

NEW!!

★ **Two Mallets Concert: Classic on Wood**

22nd Sat. / 2:00 pm (1:30 pm) / Aki Kumin Bunka Center / Advance: Adults-¥2,000 High school students & under-¥1,000; At the door: Adults-¥2,500 High school students & under-¥1,500 / Now on sale / JMS Aster Plaza, Kumin Bunka Centers / Aki Kumin Bunka Center 082-824-1330
♫ This is a marimba & piano concert.

★ **Disney Live in Concert:****Pirates of the Caribbean: The Curse of the Black Pearl – in concert live to film –**

22nd Sat. / 6:00 pm (5:00 pm) / Ueno Gakuen Hall / S-¥8,300 A-¥7,300 Students (25 years old and under)-¥2,500 / Now on sale / Lawson, Ticket PIA, e+, ① / UNION Music Office 082-247-6111

★ **"Music Brings Peace" Concert**

23rd Sun. / 3:00 pm (2:00 pm) / Hiroshima Bunka Gakuen HBG Hall / ¥2,000 (all non-reserved seats) / Now on sale / ① / NPO Music Brings Peace 082-247-8604, E-mail: info@music-peace.jp

★ **NHK Symphony Orchestra, Tokyo: Special Concert in Hatsukaichi**

23rd Sun. / 4:30 pm (4:00 pm) / Hatsukaichi Bunka Hall Sakurapia / SS-¥10,000 S-¥8,500 A-¥7,000 B-¥6,000 Students (B seats)-¥3,000 (Student tickets are only sold at the Sakurapia Office.) / Now on sale / ①, Ticket PIA, Lawson, Sakurapia, Chugoku Shimbun / Hatsukaichi Bunka Hall Sakurapia 0829-20-0111

♫ Conductor: Ken Takaseki
Violin: Nikita Briso-Glebsky

NEW!!

★ **Hanano Kubikazari Concert 2017 Vol. 3**

29th Sat. / 1:30 pm (1:00 pm) / Hiroshima Kenmin Bunka Center / ¥999 / Please ask the concert organizer for ticket information. / 090-1011-8423 (Masumoto); 090-8243-8536 (Matsumoto)

NEW!!

★ **Opera Lecture Concert in Hiroshima 2017 by Kazushi Ono**

29th Sat. / 3:00 pm (2:00 pm) / Elisabeth University of Music, Cecilia Hall / Adults: Advance-¥3,500

Please feel free to contact the International Exchange Lounge at 082-247-9715.

E-mail: golounge@pcf.city.hiroshima.jp

July 2017

At the door-¥4,000; Students-¥2,000 (Student tickets are only sold at the NPO “Music bring Peace” Office.) / Now on sale / ①, “Music bring Peace” Office / NPO Music bring Peace 082-247-8604 E-mail: info@music-peace.jp
 ♪ Kazushi Ono is a principal conductor of Opéra de Lyon.

★ El Camino Flamenco 2017

29th Sat. / 5:00 pm (4:30 pm) / Hiroshima Kokusai Kaigijo (International Conference Center Hiroshima), Phoenix Hall / Advance-¥3,000 At the door-¥3,500 (all non-reserved seats) / Tickets & Inquiries: El Camino Flamenco Studio 082-241-7252 E-mail: elcamino@urban.ne.jp

★ Hatsukaichi Peace Concert 2017

30th Sun. / 1:30 pm – 3:30 pm (1:00 pm) / Hatsukaichi Bunka Hall Sakurapia / Free admission / Hatsukaichi City Kyouiku Iinkai 0829-30-9203

★ Hiroshima Symphony Orchestra: The 27th Regular Concert in Kure

(Dvořák: *Romance in F minor Op. 11 (B. 39)*; Martinů: *Concerto for 2 Violins & Orchestra*; Dvořák: *Symphony No. 9 in E minor Op. 95 “From the New World”*)

30th Sun. / 2:30 pm (2:00 pm) / Kure City Bunka Hall / S-¥3,700 A-¥3,200 B- ¥2,700 Students-¥1,000 (Student tickets are only sold at the Hiroshima Symphony Orchestra Office.) / Now on sale / ①②⑤⑥, Chugoku Shimbun, Hiroshima Symphony Orchestra Office / Kure City Bunka Hall 0823-25-7878, Hiroshima Symphony Orchestra Office 082-532-3080

♪ Conductor: Masato Suzuki
 Violin: Yosuke Kawasaki, Jessica Linnebach

NEW!!

★ Drakensberg Boys Choir from South Africa

31st Mon. / 7:00 pm / Hiroshima Bunka Gakuen HBG Hall / A-¥5,800 B-¥4,800 Student tickets at the door-¥2,000 (Student ID will be required for junior high school students anup.) / Now on sale / ①⑥ / MIN-ON Hiroshima 082-567-0585

August

★ Joe Hisaishi & World Dream Orchestra 2017

2nd Wed. / 7:00 pm (6:15 pm) / Ueno Gakuen Hall / S-¥8,900 A-¥8,400 / Now on sale / Lawson, Ticket PIA, e+ / Candy Promotion Hiroshima 082-249-8334

★ Requiem in Hiroshima vol. 17

11th Fri. / 4:30 pm (4:00 pm) / Nishi Kumin Bunka Center / Advance: Adults-¥2,500 Students-

¥1,500; At the door: Adults-¥2,800 Students-¥1,800 / Now on sale / ① / 090-1014-8498 (Kobayashi)

★ Hiroshima Symphony Orchestra:

An Evening of Peace Concert stage 1

(R. Strauss: *Tod und Verklärung Op. 24*; Brahms: *Piano Concerto No. 1 in D minor Op. 15*)

5th Sat. / 3:00 pm (2:00 pm) / Hiroshima Bunka Gakuen HBG Hall / S-¥5,000 A-¥4,000 Students-¥2,000 (Student tickets are only sold at the Hiroshima Symphony Orchestra Office.) / Now on sale / ①②⑤⑥⑦⑧, Lawson, Ticket PIA, Chugoku Shimbun & Hiroshima Symphony Orchestra Office / Hiroshima Symphony Orchestra Office 082-532-3080 E-mail: info@hirokyo.or.jp

♪ Conductor: Tatsuya Shimono / Piano: Peter Serkin

★ Erth's Dinosaur Zoo

15th Tue. / ① 1:00 pm – 2:00 pm (12:30 pm)
 ② 3:30 pm – 4:30 pm (3:00 pm) / Hiroshima Bunka Gakuen HBG Hall / ¥3,000 / Now on sale / Lawson, Ticket PIA, e+, ①⑥ / Candy Promotion Hiroshima 082-249-8334

NEW!!

★ Legare Concert vol. 3

16th Wed. / 2:30 pm (2:00 pm) / Hatsukaichi Bunka Hall Sakurapia / Advance: Adults-¥2,000 Students-¥1,000; At the door: Adults-¥2,500 Students-¥1,500 / Please ask the concert organizer for ticket information. / 090-9413-7959 (Ukena)
 ♪ This is a flute, piano & soprano concert.

★ The 29th Affinis Music Festival 2017 Hiroshima (Aug. 19 – 27)

SCHEDULE:

- ❖ Chamber Music Concerts / 22nd Tue. – 24th Thurs. / 7:00 pm (6:30 pm) / JMS Aster Plaza
- ❖ The 29th Affinis Music Festival Orchestra Grand Concert / 27th Sun. / 3:00 pm (2:00 pm) / JMS Aster Plaza
 - Haydn: Symphony Hob. I – 100 in G major “Military”
 Concertmaster: Henrik Hochschild
 - Brahms: Symphony No. 2 in D major Op. 73
 Conductor: Kazuyoshi Akiyama
- ❖ Promenade Concerts / 22nd Tue. – 24th Thurs. / 5:30 pm / JMS Aster Plaza
- ❖ Seminars / 19th Sat. – 23rd Wed. & 25th Fri. / JMS Aster Plaza
 ♪ Some seminars are not open to public.
- ❖ Cultural Programs for Citizens
 - ❖ Free admission program
 - ★ Lunchtime Concerts / 19th Sat. – 22nd Tue. / 12:30 pm / JMS Aster Plaza

Please feel free to contact the International Exchange Lounge at 082-247-9715.

E-mail: golounge@pcf.city.hiroshima.jp

July 2017

★ **Mini Concerts** / ① 20th Sun. ② 21st Mon. / 7:00 pm / ① the 20th: Lobby, RIHGA Royal Hotel Hiroshima ② the 21st: Formerly the Bank of Japan Hiroshima Branch

★ **AIUE Orchestra** / 26th Sat. / 3:00 pm / JMS Aster Plaza

☺ This is an orchestra concert for elementary school students. Although admission is free, numbered ticket will be required. Applications for the numbered tickets will be accepted from Jul. 1 to Jul. 31.

★ **AIUE Music Lesson** / 26th Sat. / 1:30 pm / JMS Aster Plaza

☺ Participants will be selected from the participants of AIUE Orchestra.

★ **Minna de Orchesra!** / 24th Thurs. / 4:00 pm / JMS Aster Plaza

☺ This is a participatory orchestra to commemorate the finale of the festival in Hiroshima. Please check the website for more information.

TICKETS:

❖ Seminar:

One day pass-¥500 All program pass-¥1,000

☺ You can attend seminars with concert tickets.

❖ Chamber Music Concert:

Adults-¥2,500 Students-¥1,000

✧ All non-reserved seats

✧ Student tickets are only sold at JMS Aster Plaza and Kumin Bunka Centers and the Hiroshima Symphony Orchestra Office.

❖ Grand Concert:

S-¥5,200 A-¥4,200 B-¥3,200

Students-¥1,500

✧ B seat tickets are not sold at JMS Aster Plaza and Kumin Bunka Centers

✧ Student tickets are only sold at the Hiroshima Symphony Orchestra office.

TICKET SALE DATE: Now on sale

TICKET OFFICES: ①②⑤⑥⑦, JMS Aster Plaza, Kumin Bunka Centers, Hiroshima Symphony Orchestra Office & Chugoku Shimbun

INQUIRIES:

❖ About the Music Festival:

Affinis Arts Foundation

03-5797-7135 E-mail: info@affinis.or.jp

HP: http://www.affinis.or.jp/

❖ About the Cultural Programs

Hiroshima City Bunka Zaidan

082-244-0750

E-mail: bunka@cf.city.hiroshima.jp

HP: http://affinis-hiroshima.com/

❖ About the Grand Concert:

Hiroshima Symphony Orchestra Office

082-532-3080 E-mail: info@hirokkyo.or.jp

HP: http://hirokkyo.or.jp/

★ “PO” Fusion Concert

28th Mon. / 7:30 pm (7:00 pm) / Live Juke / Advance: Adults-¥3,500 Students-¥2,000; At the door: Adults-¥4,000 Students-¥2,500 / Ticket reservations & Inquiries: “PO” Executive Committee 090-8717-7639 (Uchida), E-mail: quintettheburoly@yahoo.co.jp

♪ Special guest: Akira Onozuka, a keyboardist.

★ Adrien Moignard Japan Tour in Hiroshima 2017

30th Wed. / 7:30 pm (7:15 pm) / Live Juke / Advance-¥5,000 At the door-¥5,500 / Now on sale / Ticket reservation (online):

http://manouche.hy-creative.com/adrien-moignard / Live Juke 082-249-1930

♪ This is a jazz concert

★ Ventures Japan Tour 2017

31st Thurs. / 6:30 pm (6:00 pm) / JMS Aster Plaza / ¥6,000 / Now on sale / ①⑥, Lawson, Ticket PIA, e+ / Candy Promotion Hiroshima 082-249-8334

September

NEW!!

★ Kojima Musica Collegia: The 27th Regular Concert

1st Fri. / 6:00 pm (5:00 pm) / JMS Aster Plaza / Advance: Adults-¥2,500 Students-¥1,500

Family pair tickets-¥3,500 Reserved seats-¥3,500;

At the door: Adults-¥2,800 Students-¥1,700

Family pair tickets-¥3,800 Reserved seats-¥3,800

/ Now on sale / ① / 080-1944-2388 (Kojima)

E-mail: tomokist@siren.ocn.ne.jp

NEW!!

★ Kiyoshi Shomura Classic Guitar Recital

1st Fri. / 6:45 pm (6:15 pm) / Higashi Kumin Bunka Center / Adults: Advance-¥3,000 At the door-¥3,500; High school students and under-¥1,500 (all non-reserved seats) / Ticket information & Inquiries: Higashi Kumin Bunka Center 082-264-5551; Hiroshima Guitar Association 0829-38-4558 (Ibuki)

NEW!!

★ Irisée Pianistes Concert

8th Fri. / 6:30 pm (6:00 pm) / Higashi Kumin Bunka Center / ¥1,500 / Please ask the concert organizer for ticket information. / 080-4260-2550 (Ninomiya)

★ Hiroshima Symphony Orchestra: The 373rd Subscription Concert

(R. Strauss: *Symphonic Fragment from Josephslegende TrV231a*; Beethoven: *Symphony No. 3 in E-flat major Op. 55 “Eroica”*)

8th Fri. / 6:45 pm (5:45 pm) / Hiroshima Bunka

Please feel free to contact the International Exchange Lounge at 082-247-9715.

E-mail: golounge@pcf.city.hiroshima.jp

July 2017

Gakuen HBG Hall / S-¥5,200 A-¥4,700 B-¥4,200 Students-¥1,500 (Student tickets are only sold at the Hiroshima Symphony Orchestra Office.) / From Sat., July 8 (from Mon., July 10 at the Hiroshima Symphony Orchestra Office) / ①②③④⑤⑥⑦⑧, Lawson, Ticket PIA, Chugoku Shimbun & Hiroshima Symphony Orchestra Office / Hiroshima Symphony Orchestra Office 082-532-3080 E-mail: info@hirokyo.or.jp
 ♪ Conductor: Christian Arming

★ **Shochiku Kabuki**

9th Sat. / ① Noon (11:30 am) ② 4:30 pm (4:00 pm) / Kure City Bunka Hall / S-¥6,200 A-¥4,200 B-¥3,100 Students (those who are 27 years old and under)-¥1,080 (Student tickets are only sold at Kure City Bunka Hall, Ticket PIA, Lawson, Seven-Eleven. Student ID will be required at the entrance on the performance day.) / Now on sale / ①⑥, Ticket PIA, Lawson, Seven-Eleven / Kure City Bunka Hall 0823-25-7878

♪ This is a traditional Japanese performing art.

★ **Teiko Maehashi Violin Recital**

10th Sun. / 2:00 pm (1:30 pm) / Hatsukaichi Bunka Hall Sakurapia / ¥3,800 / Now on sale / ①⑥⑦, Lawson, Ticket PIA, e+, Sakurapia / Hatsukaichi Bunka Hall Sakurapia 0829-20-0111 (9 am – 7 pm, closed on Mondays)

★ **Hiroshima Symphony Orchestra, Discovery Series: Dämmerung in Wien**

(Suppé: *Banditenstreiche, Overture*; Schönberg: *Chamber Symphony No. 2 Op. 38*; Schubert: *Symphony No. 2 in B-flat major D125*)

14th Thurs. / 6:45 pm (5:45 pm) / JMS Aster Plaza / S-¥5,200 A-¥4,200 B-¥3,200 Students-¥1,000 (Student tickets are only sold at the Hiroshima Symphony Orchestra Office.) / From Fri., July 14 / ①②③④⑤⑥⑦⑧, Lawson, Ticket PIA, Chugoku Shimbun, JMS Aster Plaza & Hiroshima Symphony Orchestra Office / Hiroshima Symphony Orchestra Office 082-532-3080 E-mail: info@hirokyo.or.jp

♪ Conductor: Tatsuya Shimono

★ **The Phantom of the Opera by Gekidan Shiki**

Sept. 14 – Nov. 5 / Ueno Gakuen Hall / S-¥10,800 A-¥8,640 B-¥6,480 C-¥3,240 / Now on sale / Please check the Gekidan Shiki's website about time schedule and ticket information: <https://www.shiki.jp/applause/operaza/> / Gekidan Shiki Hiroshima Office 082-503-3411 (Mon. – Sat. except national holidays)

♪ Gekidan Shiki (Shiki Theatre Company) is one of the famous theater companies in Japan.

This musical will be played in Japanese.

★ **Hiroshima Happy New Ear 24: Jeroen Berwaerts Trumpet Recital**

NEW!!

19th Tue. / 7:00 pm (6:30 pm) / JMS Aster Plaza / Advance: Adults-¥2,500 Students-¥1,500; At the door: Adults-¥3,000 Students-¥2,000 (all non-reserved seats) / Now on sale / ①⑥, JMS Aster Plaza, Chugoku Shimbun, Ticket PIA, Lawson / Hiroshima Opera and Music Promotion Committee 082-244-8000

★ **Aki Classical Concert Vol. 177: Cool Classical Music!**

NEW!!

23rd Sat. / 2:00 pm (1:30 pm) / Aki Kumin Bunka Center / Free admission / Aki Kumin Bunka Center 082-824-1330 (closed on Mondays)

★ **Aki Classical Concert Vol. 178: Horn**

NEW!!

24th Sun. / 2:00 pm (1:30 pm) / Aki Kumin Bunka Center / Free admission / Aki Kumin Bunka Center 082-824-1330 (closed on Mondays)

★ **Sonare Concert Vol. 1**

NEW!!

29th Fri. / 6:00 pm (5:30 pm) / Higashi Kumin Bunka Center / Advance-¥1,000 At the door-¥1,500 / Please ask the concert organizer for ticket information. / Sonare 090-4699-6979

★ **Jake Shimabukuro Japan Tour**

30th Sat. / 5:00 pm (4:00 pm) / Hiroshima Club Quattro / ¥7,300 / Now on sale / e+, Ticket PIA, Lawson, ① / Yumebanchi Hiroshima 082-249-3571

♪ Jake Shimabukuro is a ukulele player from Hawaii.

★ **Hiroshima Oepra Renaissance: Così fan Tutte (by W. A. Mozart)**

① Sat., Sept. 30 ② Sun., Oct. 1 / 2:00 pm / JMS Aster Plaza / SS-¥8,000 S-¥6,500 A-¥5,000 B-¥3,500 Students-¥2,000 ☆ Student tickets are only sold at the door. / From Sat., July 1 / Please ask the concert organizer for ticket office information. / Hiroshima Opera and Music Promotion Committee 082-244-8000

♪ This will be played in Italian with Japanese subtitles.

October

NEW!!

★ **Bunraku (traditional Japanese puppet play)**

3rd Tue. / ① 1:30 pm (1:00 pm) ② 6:30 pm (6:00 pm) / JMS Aster Plaza / Stalls-¥4,500 Balcony seats-¥2,500 / From Sat., July 8 at JMS Aster Plaza; From Tue., July 11 at ticket offices / ①⑥, JMS Aster Plaza, Chugoku Shimbun, Ticket PIA, Lawson / JMS Aster Plaza 082-244-8000

Please feel free to contact the International Exchange Lounge at 082-247-9715.

E-mail: golounge@pcf.city.hiroshima.jp

July 2017

★ **Paul Mauriat Remember Concert**

3rd Tue. / 2:00 pm (1:30 pm) / Hatsukaichi Bunka Hall Sakurapia / SS-¥9,800 S-¥8,800 A-¥7,800 U-22 (tickets for those who are 22 years old and under)-¥2,200 / Now on sale / Ticket PIA, Lawson, ①, Sakurapia, Chugoku Shimbun / Hatsukaichi Bunka Hall Sakurapia 0829-20-0111

★ **Night Ranger Japan Tour**

4th Wed. / 7:00 pm (6:00 pm) / Hiroshima Club Quattro / ¥9,000 / Now on sale / e+, Ticket PIA, Lawson, ①, Tower Records Hiroshima, Hiroshima Club Quattro / Hiroshima Club Quattro 082-542-2280

★ **MR. BIG Japan Tour**

5th Thurs. / 7:00 pm (6:00 pm) / Blue Live Hiroshima / ¥9,800 / From Sat., July 15 / Lawson, e+, Ticket PIA, ① / TSS Office 082-253-1010 (Mon. – Fri., 10 am – 6 pm); Yumebanchi Hiroshima 082-249-3571 (Mon. – Fri., 11 am – 7 pm)

★ **Mami Hagiwara Piano Recital**

6th Fri. / 7:00 pm (6:30 pm) / Elisabeth University of Music, Cecilia Hall / ¥4,000 / Now on sale / ①⑥⑦, Lawson, Ticket PIA / HOME Event Center 082-221-7116 (Mon. – Fri., 10 am – 5 pm)

★ **John Duncan, Jim O'Rourke, Joe Talia & Eiko Ishibashi**

17th Tue. / 7:30 pm (6:30 pm) / Hiroshima Club Quattro / Advance: Adults-¥3,500 Students-¥2,500; At the door: Adults-¥4,000 Students-Not finalized (all non-reserved seats) / From Sat., July 1 / e+, Ticket PIA, Lawson, Stereo Records, Tower Records Hiroshima, ① / Hiroshima Club Quattro 082-542-2280

★ **Jackson Browne Japan Tour**

24th Tue. / 7:30 pm (7:00 pm) / Hiroshima Bunka Gakuen HBG Hall / S-¥11,000 A-¥10,000 / From Sat., July 8 / Lawson, e+, Ticket PIA, ① / Yumebanchi Hiroshima 082-249-3571 (Mon. – Fri., 11 am – 7 pm)

★ **Hiroshima Symphony Orchestra: The 374th Subscription Concert**

(Ikuma Dan: *Orchestra Fantasy "Flying Devi"*; Berg: *Violin Concerto (To the Memory of an Angel)*; Schumann: *Symphony No. 3 in E-flat major Op. 97 "Rhenish"*)

27th Fri. / 6:45 pm (5:45 pm) / Hiroshima Bunka Gakuen HBG Hall / S-¥5,200 A-¥4,700 B-¥4,200 Students-¥1,500 (Student tickets are only sold at the Hiroshima Symphony Orchestra Office.) / From Sun., August 27 (from Mon., August 28 at the Hiroshima Symphony Orchestra Office) /

①②⑤⑥⑦⑧, Lawson, Ticket PIA, Chugoku Shimbun & Hiroshima Symphony Orchestra Office / Hiroshima Symphony Orchestra Office 082-532-3080 E-mail: info@hirokyo.or.jp

♪ Conductor: Tatsuya Shimono
Violin: Serge Zimmermann

★ **Kodo "Dadan"**

28th Sat. / 2:00 pm (1:30 pm) / Hatsukaichi Bunka Hall Sakurapia / Adults-¥6,000 U-25 (tickets for those who are 25 years old and under)-¥4,000 / Now on sale / Sakurapia, ①⑥⑦, e+, Seven-Eleven / TSS 082-253-1010 (Mon. – Fri., 10 am – 6 pm)
♪ This is a *taiko*, traditional Japanese drum performance.

★ **Ingrid Fuzjko Hemming (piano) & State Symphony Capella of Russia conducted by Valery Polyansky**

30th Mon. / 6:30 pm (6:00 pm) / Hiroshima Kokusai Kaigijo (International Conference Center Hiroshima), Phoenix Hall / S-¥9,800 A-¥7,800 B-¥6,000 SS-¥12,000 / From Sat., July 8 / Ticket PIA, Lawson, e+, ①⑥ / Sunrise Promotion Tokyo 0570-00-3337 (10 am – 6 pm)

November★ **Marimba Paradise Special Concert**

3rd Fri. / 2:30 pm (1:45 pm) / Nishi Kumin Bunka Center / Advance: Adults-¥2,500 High school students and under & Seniors-¥1,500; At the door: Adults-¥3,000 High school students and under & Seniors-¥2,000 / Now on sale / ①⑥⑦, JMS Aster Plaza, Kumin Bunka Centers, Chugoku Shimbun / Nishi Kumin Bunka Center 082-234-1960 (closed on Mondays)

★ **Hiroshima Symphony Orchestra: Bouquet of Music HSO Masterpiece Concert ~ Autumn ~**

(Sibelius: *Finlandia Op. 26*; Grieg: *Piano Concerto in A minor Op. 16*; Tchaikovsky: *Swan Lake Op. 20*)

3rd Fri. / 3:00 pm (2:00 pm) / Hiroshima Kokusai Kaigijo (International Conference Center Hiroshima), Phoenix Hall / S-¥4,200 Pair tickets (S seats)-¥6,400 A-¥3,200 B-¥2,200 Students-¥1,500 (Student tickets are only sold at the Hiroshima Symphony Orchestra Office.) / Now on sale / ①②⑤⑥⑦⑧, Lawson, Ticket PIA, Chugoku Shimbun & Hiroshima Symphony Orchestra Office / Hiroshima Symphony Orchestra Office 082-532-3080 E-mail: info@hirokyo.or.jp

♪ Conductor: Naoto Otomo / Piano: Kanon Matsuda

Please feel free to contact the International Exchange Lounge at 082-247-9715.

E-mail: golounge@pcf.city.hiroshima.jp

July 2017

NEW!!

★ **Chamber Music Concert**

5th Sun. / 2:30 pm (1:45 pm) / Nishi Kumin Bunka Center / Advance: Adults-¥3,000 High school students and under & Seniors-¥2,000; At the door: Adults-¥3,500 High school students and under & Seniors-¥2,500 / Now on sale / ①⑥⑦, JMS Aster Plaza, Kumin Bunka Centers, Chugoku Shimbun / Nishi Kumin Bunka Center 082-234-1960 (closed on Mondays)

NEW!!

★ **THE STRYPES Japan Tour 2017**

6th Mon. / 7:00 pm (6:00 pm) / Hiroshima Club Quattro / ¥6,800 / From Sat., July 1 / e+, Ticket PIA, Lawson, ① / Yumebanchi Hiroshima 082-249-3571

NEW!!

★ **Hiroshima Symphony Orchestra: The 375th Subscription Concert**

(*Tchaikovsky: Piano Concerto No. 1 in B-flat minor Op. 23; Bartók: Concerto for Orchestra Sz. 116*)

14th Tue. / 6:45 pm (5:45 pm) / Hiroshima Bunka Gakuen HBG Hall / S-¥6,200 A-¥5,700 B-¥5,200 Students-¥1,500 (Student tickets are only sold at the Hiroshima Symphony Orchestra Office.) / From Thurs., September 14 / ①②⑤⑥⑦⑧, Lawson, Ticket PIA, Chugoku Shimbun & Hiroshima Symphony Orchestra Office / Hiroshima Symphony Orchestra Office 082-532-3080 E-mail: info@hirokyo.or.jp
 🎵 Conductor: Tatsuya Shimono

December

NEW!!

★ **Hiroshima Symphony Orchestra, Discovery Series: Dämmerung in Wien**

(*Suppe: Die schöne Galathea, Overture; J. S. Bach (arr. A. Weber): Musikalisches Opfer, Ricercare; Webern: Symphony Op. 21; Schubert: Symphony No. 3 in D major D200*)

1st Fri. / 6:45 pm (5:45 pm) / JMS Aster Plaza / S-¥5,200 A-¥4,200 B-¥3,200 Students-¥1,000 (Student tickets are only sold at the Hiroshima Symphony Orchestra Office.) / From Sun., October 1 (from Mon., October 2 at the Hiroshima Symphony Orchestra Office) / ①②⑤⑥⑦⑧, Lawson, Ticket PIA, Chugoku Shimbun, JMS Aster Plaza & Hiroshima Symphony Orchestra Office / Hiroshima Symphony Orchestra Office 082-532-3080 E-mail: info@hirokyo.or.jp
 🎵 Conductor: Tatsuya Shimono

NEW!!

★ **Mariinsky Theatre Orchestra in Hiroshima**

2nd Sat. / 5:00 pm / Hiroshima Bunka Gakuen HBG Hall / S-¥15,000 A-¥12,000 B-¥8,000 / From Sat., July 15 / e+, Ticket PIA, Lawson, ①⑥ / Hiroshima TV Event Information Center 082-249-1218 (Mon. – Fri., 10 am – 6 pm)



Please feel free to contact the International Exchange Lounge at 082-247-9715.

E-mail: golounge@pcf.city.hiroshima.jp

July 2017

Event Halls

◆ Hiroshima Bunka Gakuen HBG Hall 広島文化学園 HBG ホール

(3-3 Kako-machi, Naka-ku, Hiroshima Tel. 082-243-8881)

- Take the No.24 bus bound for Yoshijima Eigyocho (吉島営業所) and get off at Kako-machi (加古町). Walking time to destination: 2 minutes

◆ Hiroshima Kenmin Bunka Center 広島県民文化センター

(1-5-3 Ote-machi, Naka-ku, Hiroshima Tel. 082-245-2311)

- Take a streetcar or a bus and get off at Hondori (本通) or Kamiya-cho (紙屋町). Walking time to destination: 5 minutes

◆ JMS Aster Plaza JMS アステールプラザ

(4-17 Kako-machi, Naka-ku, Hiroshima Tel. 082-244-8000)

- Take the No.24 bus bound for Yoshijima Eigyocho (吉島営業所) and get off at Kako-machi (加古町). Walking time to destination: 2 minutes

◆ Ueno Gakuen Hall 上野学園ホール

(19-1 Hakushima-kita-machi, Naka-ku, Hiroshima Tel. 082-223-6367)

- Take the Astramline bound for Koiki Koen-mae (広域公園前) or Chorakuji (長楽寺) Station and get off at Hakushima (白島) Station. Walking time to destination: 3 minutes

◆ Hiroshima Kokusai Kaigijo (International Conference Center Hiroshima), Phoenix Hall

広島国際会議場 フェニックスホール

(1-5 Nakajima-cho, Naka-ku, Hiroshima Tel. 082-242-7777)

- Get on a Hiroshima Bus bound for Yoshijima and get off at Heiwa Kinenkoen (平和記念公園).
- Get off at the Chuden-mae (中電前) or Genbaku Dome-mae (原爆ドーム前) Streetcar Stops. Walking time to destination: 5 minutes

◆ Hiroshima Club Quattro 広島クラブクアトロ

(10-1 Hondori, Naka-ku, Hiroshima (Hiroshima PARCO Hon-kan 10F) Tel. 082-542-2280)

- Take a streetcar and get off at Hatchobori (八丁堀). Walking time to destination: 5 minutes

◆ Hiroshima Green Arena 広島グリーンアリーナ

(4-1 Moto-machi, Naka-ku, Hiroshima Tel. 082-228-1111)

- Take a streetcar and get off at Kamiya-cho-nishi (紙屋町西) or Kamiya-cho-higashi (紙屋町東). Walking time to destination: 5 minutes

◆ Hiroshima Sun Plaza 広島サンプラザ

(3-1-1 Shoko Center, Nishi-ku, Hiroshima Tel. 082-278-5000)

- Take a train or streetcar to Miyajima and get off at JR Shin-inokuchi (新井口) Station (JR Sanyo Line) or Shoko Center-iriguchi (商工センター入り口) Streetcar Stops (Hiroden Miyajima Line). Walking time to destination: 5 minutes

◆ Elisabeth University of Music エリザベト音楽大学

(4-15 Nobori-machi, Naka-ku, Hiroshima Tel. 082-221-0918)

- Take a streetcar and get off at Kanayama-cho (銀山町) or Jogakuin-mae (女学院前). Walking time to destination: 10 minutes

◆ Higashi Kumin Bunka Center 東区民文化センター

(10-31 Higashi-kaniya-cho, Higashi-ku, Hiroshima Tel. 082-264-5551)

- From the Shinkansen Exit of the JR Hiroshima (広島) Station, walking time to destination is 10 minutes.

Please feel free to contact the International Exchange Lounge at 082-247-9715.

E-mail: golounge@pcf.city.hiroshima.jp

July 2017

◆ **Nishi Kumin Bunka Center** 西区民文化センター

(6-1 Yokogawa Shin-machi, Nishi-ku, Hiroshima Tel. 082-234-1960)

➤ From JR Yokogawa (横川) Station, walking time to destination is 5 minutes.

◆ **Asaminami Kumin Bunka Center** 安佐南区民文化センター

(22-17 Nakasuji 1-chome, Asaminami-ku, Hiroshima Tel. 082-879-3060)

➤ From *Astramline* Nakasuji (中筋) Station, walking time to destination is 5 minutes.

◆ **Saeki Kumin Bunka Center** 佐伯区民文化センター

(6-1-10 Itsukaichi-chuo, Saeki-ku, Hiroshima Tel. 082-921-7550)

➤ From Hiroshima Bus Center (Sogo Hiroshima, 3F), take a bus to Yakushigaoka-danchi (薬師が丘団地), Shikigaoka-danchi (四季が丘団地), Higashi-kannondai-danchi (東観音台団地) or Ajinadai-kita (阿品台北) and get off at Saeki-kumin Bunka Center-mae (佐伯区民文化センター前). Walking time to destination: 1 minutes

◆ **Aki Kumin Bunka Center** 安芸区民文化センター

(2-16 Funakoshi-minami 3-chome, Aki-ku, Hiroshima Tel. 082-824-1330)

➤ From JR Kaitaichi (海田市) Station (JR Sanyo Line), walking time to destination is 5 minutes.

◆ **Blue Live Hiroshima** ブルーライブ広島

(3-12-69 Ujina Kaigan, Minami-ku, Hiroshima Tel. 082-250-5522)

➤ Take a streetcar for Hiroshima-ko (No. 1, 3 or 5) and get off at Kaigan-dori (海岸通). Walking time to destination: 5 minutes

◆ **Live Juke** ライブジューク

(Crystal Plaza 19F, Naka-machi, Naka-ku, Hiroshima Tel. 082-567-5011)

➤ From Takanobashi (鷹野橋) or Nisseki Byouin-mae (日赤病院前) Streetcar Stops, walking time to destination is 7 minutes

◆ **lifeone221 hall** lifeone221 ホール

(2-2-1 Itsukaichi-chuo, Saeki-ku, Hiroshima-shi Tel.082-922-0028)

➤ Take a bus from JR Itsukaichi (五日市) Station (north exit) and get off at Itsukaichi-chuo 2-chome (五日市中央二丁目). Walking time to destination: 5 minutes.

◆ **Hiroshima Nagarekawa Church** 広島流川協会

(8-30 Kami-nobori-cho, Naka-ku, Hiroshima Tel. 082-221-1813)

➤ From Jogakuin-mae (女学院前) or Shukkeien-mae (縮景園前) Streetcar Stop, walking time to destination is 5 minutes.

◆ **Jodoshinshu Honganji-ha Hiroshima Betsuin** 浄土真宗本願寺派広島別院

(1-19 Tera-machi, Naka-ku, Hiroshima Tel. 082-231-0302)

➤ Get off at Betsuin-mae (別院前) Streetcar Stop.

◆ **Hatsukaichi Bunka Hall Sakurapia** はつかいち文化ホールさくらぴあ

(1-11-1 Shimo-hera, Hatsukaichi City Tel. 0829-20-0111)

➤ Take a train on the JR Sanyo Line bound for Iwakuni and get off at JR Miyauchi Kushido (宮内串戸) Station. Walking time to destination: 15 minutes

➤ Take a streetcar on the Hiroden Miyajima Line and get off at (役所前). Walking time to destination: 8 minutes

◆ **Kure City Bunka Hall** 呉市文化ホール

(3-10-1 Chuo, Kure City Tel. 0823-25-7878)

➤ From JR Kure (呉) Station (JR Kure Line), walking time to destination is 5 minutes.



Please feel free to contact the International Exchange Lounge at 082-247-9715.

E-mail: golounge@pcf.city.hiroshima.jp

July 2017



Museums



A: Adults U: University Students H: High School Students
 J: Junior High School Students E: Elementary School Students
 S: Seniors (65 years old and up - Identification showing your date of birth is required.)

◆ Generally, admission is allowed up to 30 min. prior to closing. ◆

Hiroshima Museum of Art

Address: 3-2 Moto-machi, Naka-ku, Hiroshima City
 Tel: 082-223-2530
 Hours: 9:00 am – 5:00 pm
 Closed: Mondays (except during special exhibitions)
 URL: <http://www.hiroshima-museum.jp>

Special Exhibition

■ Akiko Hayashi's Picture Book Illustrations

Period: Sat., Jul. 15 – Sun., Aug. 27

Admission Fee:

A -¥1,200 (¥1,000), S-¥1,000,
 U&H-¥900 (¥700), J&E-¥500 (¥300)

◇ Advance ticket prices shown in ().

Collection Exhibition

■ Modern European Paintings

Period: Year-round

Hiroshima City Museum of Contemporary Art

Address: 1-1 Hijiyama Koen, Minami-ku, Hiroshima City
 Tel: 082-264-1121
 Hours: 10:00 am – 5:00 pm
 Closed: Mondays (except national holiday)
 URL: <http://www.hcmca.cf.city.hiroshima.jp/>

Special Exhibition

■ The Prolific World of TOGO MURANO: From the Memorial Cathedral for World Peace

Period: Tue., May 16 – Sun., Jul. 9

Admission Fee:

A-¥1,030 (¥820), U-¥720 (¥620),
 S&H-¥510 (¥410), J & under-Free

◇ Advance ticket prices shown in ().

■ The 10th Hiroshima Prize: Mona Hatoum

Period: Sat., Jul. 29 – Sun., Oct. 15

Admission Fee:

A-¥1,030 (¥820), U-¥720 (¥620),
 S&H-¥510 (¥410), J & under-Free

◇ Advance ticket prices shown in ().

Collection Exhibition

Admission Fee: A-¥360 / U-¥270 / S&H-¥170
 / J & under- Free

Holders of special exhibition admission tickets
 are also entitled to view the collection
 exhibition.

■ 2017 – 2:

Collection Highlights & Special Feature: "Forms of Light / Scenes of Light"

Period: Sat., Jun. 3 – Sun., Sept. 10

Video Art Program (Free admission)

■ A Window to the World [The 56th Program]:

Luis Corzo

Period: Tue., May 30 – Thurs., Jul. 27

■ Antonio Gaudí (a documentary film directed by Hiroshi Teshigawara)

Period: Tue., May 30 – Sun., Jul. 30

Hiroshima MOCA Monthly Workshop

✂ This is an art program in which the
 museum selects one particular material and
 visitors are free to make anything with it.
 Reservations are not required. You can join
 the workshop on the event day of.

Date: Jul. 23

Time: ① 10:00 am – noon

② 2:00 pm – 4:00 pm

Participation Fee: Free

Hiroshima Prefectural Art Museum

Address: 2-22 Kaminobori-cho, Naka-ku,
 Hiroshima City
 Tel: 082-221-6246
 Hours: 9:00 am – 5:00 pm
 ◇ Open until 8:00 pm on Fridays (Apr. – Oct.)
 ◇ Open until 7:00 pm on Fridays (Nov. – Mar.)
 Closed: July 10
 URL: <http://www.hpam.jp/>

Special Exhibitions

■ The 5th NEW KENBITEN: Annual Competition of Art in Hiroshima Prefecture

Period: Sat., Jun. 24 – Sun., Jul. 9

Please feel free to contact the International Exchange Lounge at 082-247-9715.

E-mail: golounge@pcf.city.hiroshima.jp

July 2017

Admission Fee:

A-¥510 (¥410), U&H-¥310 (¥250),
J&E-¥100 (¥80)

✧ Advance ticket prices shown in ()

☺ KENBITEN is the publicly sponsored exhibition encouraging the prefectural citizens' creative activities as well as providing opportunities for application.

■ **The Shaun the Sheep Exhibition:
An Aardman Animations 40th Anniversary Event**

Period: Sat., Jul. 15 – Sun., Aug. 27

Admission Fee:

A-¥1,200 (¥1,000), U&H-¥1,000 (¥800),
J&E-¥600 (¥400)

✧ Advance ticket prices shown in ()

Collection Exhibition

Admission Fee (all exhibitions):

A-¥510, U-¥310, H & under-Free

Holders of special exhibition admission tickets are also entitled to view the Museum's Collection exhibits.

■ **Summer Museum: Searching for Animals**

Period: Wed., Jul. 5 – Sun., Sept. 10

Kure Municipal Museum of Art

Address: Irifuneyama Koen, Saiwai-cho, Kure City

Tel: 0823-25-2007

Hours: 10:00 am – 5:00 pm

Closed: Tuesdays (except national holidays)

URL: <http://kure-bi.jp/>

Collection Exhibition

■ **Colors**

Period: Wed., Jun. 28 – Sun., Sept. 3

Admission Fee: A&U-¥300, H-¥180,
J&E-¥120

Fukuyama Museum of Art

Address: 2-4-3 Nishi-machi, Fukuyama City

Tel: 084-932-2345

Hours: 9:30 am – 5:00 pm

Open until 7:00 pm on Aug. 25, 26 & Sept. 2

Closed: Mondays (except Jul. 17 & Aug. 14) & Jul. 18

HP: <http://www.city.fukuyama.hiroshima.jp/site/fukuyama-museum/>

Special Exhibition

■ **The 120th Anniversary of the Birth of Seiji Togo, A Retrospective of Togo's Depiction of Women**

Period: Sat., Jul. 8 – Sun., Sept. 3

Admission Fee: A&U-¥1,000, H & under-Free

Collection Exhibition

Admission Fee (all exhibitions):

A&U-¥300, H & under-Free

■ **Summer Exhibition**

Abstract Arts

Period: Wed., Jun. 28 – Sun., Sept. 10

Admission Fee: A&U-¥300, H & under-Free

Onomichi City Museum of Art

Address: 17-19 Nishitsuchido-cho, Onomichi City
(Inside Senkoji Park)

Tel: 0848-23-2281

Hours: 9:00 am – 5:00 pm

Closed: Mondays except national holidays

Special Exhibition

■ **Museum Collection I**

Period: Fri., Jun. 24 – Sun., Jul. 16

Admission Fee: A-¥300, U&H-¥200,
J & under-Free

■ **"Nintama Rantarō" Museum**

Period: Sat., Jul. 22 – Sun., Sept. 3

Admission Fee: Not finalized

☺ "Nintama Rantarō" is a Japanese popular *ninja* animation series based on the manga series "Rakudai Ninja Rantarō" by Sobô Amako.

Okuda Genso Sayume Art Museum

Address: 453-6 Higashi Sakeya-machi, Miyoshi City

Tel: 0824-65-0010

Hours: 9:30 am – 5:00 pm

Open until 9:00 pm on Jul. 9 & Aug. 8

Closed: July 12

URL: <http://www.genso-sayume.jp>

Special Exhibition

■ **Sekai Meisaku Gekijou ("World Masterpiece Theater"): The 40-Year History of Japanese Animation Works**

Period: Fri., Jul. 7 – Sun., Aug. 20

Admission Fee:

A-¥800 (¥700), Tickets for couple- ¥1,500

U&H-¥400 (¥300), J & under-Free

✧ Advance ticket prices shown in ().



Please feel free to contact the International Exchange Lounge at 082-247-9715.

E-mail: golounge@pcf.city.hiroshima.jp

July 2017

Hatsukaichi Art Gallery

Address: 1-11-1 Shimohera, Hatsukaichi City
(inside Hatsukaichi Bunka Hall Sakurapia)
Tel: 0829-20-0222
Hours: 10:00 am – 6:00 pm
Closed: Mondays except national holidays

Special Exhibition

■ *"Bi no Tsubo": Japanese Modernism*

Period: Fri., Jun. 16 – Sun., Jul. 23
✧ Jazz concert as an opening event will
be held on June 18, so the gallery will
open at 4:30 pm on this day.
Admission Fee: A-¥800, U-¥700,
H & under-Free

Mitsukoshi Department Store

Address: 5-1 Ebisu-cho, Naka-ku, Hiroshima City
Tel: 082-242-3111
Hours: 10:00 am – 8:00 pm
URL: <http://www.mitsukoshi.co.jp/>

Special Exhibition

■ MOOMIN Picture Book Story:

Based on Tove Jansson's Moomin Stories

Period: Tue., Jul. 11 – Sun., Jul. 23
Admission Fee: A, U&H-¥500 (¥400)
J&E-¥300 (¥200)
Preschoolers-Free

- ✧ Advance ticket prices shown in ().
- ✧ Advance ticket will be sold until July 10 at
the Mitsukoshi, Ticket PIA and Lawson.

Fukuya Department Store (Hiroshima Eki-mae)

Address: 9-1 Matsubara-cho, Minami-ku, Hiroshima City
Tel: 082-568-3111
Hours: 10:00 am – 8:00 pm
URL: <http://www.fukuya-dept.co.jp/>

Special Exhibition

■ Disney's Princesses

Period: Fri., Aug. 11 – Tue., Aug. 29
Admission Fee:
A-¥1,500 (¥1,300)
U&H-¥1,200 (¥1,000)
4 years old – Junior high school students
-¥800 (¥700)
3 years old & under-Free
✧ Advance ticket prices shown in ().
✧ Advance ticket will be sold from May 13 at
major ticket offices in Hiroshima City.



Please feel free to contact the International Exchange Lounge at 082-247-9715.

E-mail: golounge@pcf.city.hiroshima.jp

July 2017

Hiroshima Toyo Carp Schedule 2017

The Toyo Carp (Hiroshima's professional baseball team) plays about 60 games at the MAZDA Zoom-Zoom Stadium Hiroshima every year.

GAME SCHEDULE

JULY

Sat, 1st, 2:00 pm / vs. Chunichi Dragons
 Sun., 2nd, 1:30 pm / vs. Chunichi Dragons
 Tue., 4th, 6:00 pm / vs. Yomiuri Giants
 Wed., 5th, 6:00 pm / vs. Yomiuri Giants
 Thurs., 6th, 6:00 pm / vs. Yomiuri Giants
 Mon., 10th, 6:00 pm / vs. Yokohama DeNA Baystars
 Tue., 11th, 6:00 pm / vs. Yokohama DeNA Baystars
 Wed., 12th, 6:00 pm / vs. Yokohama DeNA Baystars
 Fri., 21st, 6:00 pm / vs. Chunichi Dragons
 Sat., 22nd, 6:00 pm / vs. Chunichi Dragons
 Fri., 28th, 6:00 pm / vs. Tokyo Yakult Swallows
 Sat., 29th, 6:00 pm / vs. Tokyo Yakult Swallows
 Sun., 30th, 6:00 pm / vs. Tokyo Yakult Swallows

SEPTEMBER

Tue., 5th, 6:00 pm / vs. Hanshin Tigers
 Wed., 6th, 6:00 pm / vs. Hanshin Tigers
 Thurs., 7th, 6:00 pm / vs. Hanshin Tigers
 Tue., 12th, 6:00 pm / vs. Yokohama DeNA Baystars
 Wed., 13th, 6:00 pm / vs. Yokohama DeNA Baystars
 Thurs., 14th, 6:00 pm / vs. Yokohama DeNA Baystars
 Sat., 16th, 2:00 pm / vs. Tokyo Yakult Swallows
 Sun., 17th, 1:30 pm / vs. Tokyo Yakult Swallows
 Fri., 22nd, 6:00 pm / vs. Yomiuri Giants
 Sat., 23rd, 1:30 pm / vs. Yomiuri Giants

AUGUST

Tue., 1st, 6:00 pm / vs. Hanshin Tigers
 Wed., 2nd, 6:00 pm / vs. Hanshin Tigers
 Thurs., 3rd, 6:00 pm / vs. Hanshin Tigers
 Fri., 11th, 6:00 pm / vs. Yomiuri Giants
 Sat., 12th, 6:00 pm / vs. Yomiuri Giants
 Sun., 13th, 6:00 pm / vs. Yomiuri Giants
 Fri., 18th, 6:00 pm / vs. Tokyo Yakult Swallows
 Sat., 19th, 6:00 pm / vs. Tokyo Yakult Swallows
 Sun., 20th, 6:00 pm / vs. Tokyo Yakult Swallows
 Fri., 25th, 6:00 pm / vs. Chunichi Dragons
 Sat., 26th, 6:00 pm / vs. Chunichi Dragons
 Sun., 27th, 6:00 pm / vs. Chunichi Dragons

TICKET OFFICES

◆ MAZDA Zoom-Zoom Stadium Hiroshima

Tickets can be purchased at the ticket booths at the entrances of the stadium (closed on August 6).

Booth Opening Times

11:30 am (days with night games) / 11:00 am (days with day games)

11:00 am – 4:00 pm (days when there are no games)

◆ Carp Baseball Gallery (6-7 Hatcho-bori, Naka-ku)

OPEN: 10:00 am – 4:00 pm / CLOSED: No fixed times

TEL: 227-2222

◆ Convenience Stores

Tickets are available at convenience stores such as Lawson, Seven-Eleven, FamilyMart and Sunkus.



ACCESS

MAZDA Zoom-Zoom Stadium Hiroshima:

From JR Hiroshima Station, walking time to the stadium is 10 minutes.

INQUIRIES

Hiroshima Toyo CARP

Tel (082) 223-2141 Fax. (082) 502-1189

URL: www.carp.co.jp/

Please feel free to contact the International Exchange Lounge at 082-247-9715.

E-mail: golounge@pcf.city.hiroshima.jp

July 2017

Sanfrecce Hiroshima FC Schedule 2017

GAME SCHEDULE Date / Kick Off / Game / Venue / Ticket Sales

2017 J League

Sun., July 30 / 6:30 pm / vs. Sagantosu / EDION Stadium Hiroshima / Now on sale
 Wed., August 9 / 7:00 pm / vs. Gamba Osaka / EDION Stadium Hiroshima / From Sat., July 1
 Sat., August 19 or Sun., August 20 / Not finalized / vs. Ventforet Kofu / EDION Stadium Hiroshima / Mid-July
 Sat., September 16 or Sun., September 17 / Not finalized / vs. Cerezo Osaka / EDION Stadium Hiroshima / From Sat., August 5
 Sat., September 30 or Sun., October 1 / Not finalized / vs. Hokkaido Consadole Sapporo / EDION Stadium Hiroshima / From Sat., August 5
 Sat., October 21 or Sun., October 22 / Not finalized / vs. Kawasaki Frontale / EDION Stadium Hiroshima / Not finalized
 Sun., October 29 / Not finalized / vs. Urawa Red Diamonds / EDION Stadium Hiroshima / From Sat., September 2
 Sun., November 26 / Not finalized / vs. F. C. Tokyo / EDION Stadium Hiroshima / From Sat., October 7

TICKETS Seats / Advance Tickets / At the Door

- ◆ Reserved Seats SS / ¥5,300 / ¥5,900 ◆ Reserved Seats SA / ¥3,700 / ¥4,300
- ◆ Unreserved Seats for Adults / ¥2,600 / ¥3,200
- ◆ Unreserved Seats for Students (High School Students and under) / ¥1,000 / ¥1,500

ACCESS

◆ EDION Stadium Hiroshima (Hiroshima Big Arch)

Take the *Astramline* bound for *Koiki-koen-mae* (広域公園前) and get off at the last station, *Koiki-koen-mae* (広域公園前).

From *Hondori* Station: One way fare - ¥480 Travel time - 35 min.

TICKET OFFICES

- ◆ Sanfrecce Hiroshima Official Shop V-POINT (Shareo, underground shopping mall, Kamiya-cho / Tel. 248-3317 / Mon. – Sat.: 11:00 am – 9:00 pm; Sun. & national holidays: 10:00 am – 8:00 pm / Open every day)
- ◆ EDION Play Guide (SUNMALL, 1F; 10:30 am – 8:00 pm)
- ◆ Fukuya (Hiroshima Station) (7F)
- ◆ Alpark Tenmaya (3F)
- ◆ Convenience Stores (FamilyMart, Seven Eleven, CircleKSunkus and Lawson)

INQUIRIES

Sanfrecce HIROSHIMA Tel. 233-3233 URL: www.sanfrecce.co.jp



Please feel free to contact the International Exchange Lounge at 082-247-9715.

E-mail: golounge@pcf.city.hiroshima.jp

July 2017

Seasonal Event Information

July 2017

★ Event schedules are subject to change.
Please contact event organizers before you go.



Events Held in Hiroshima City

Sun., June 18 – Fri., July 7

Ajisai (Hydrangea) Festival at Kannon-ji Temple

かんのんじ まつ
観音寺あじさい祭り

TIME: 8:30 am – 5:00 pm ☀ 10:00 am – 5:00 pm on June 18

PLACE: Kannon-ji Temple, Saeki-ku

ACCESS: Get on a bus bound for Higashi-kannondai Danchi from Itsukaichi Streetcar Stop or JR Itsukaichi Station (JR Sanyo Line) south exit and get off at Kannondai Iriguchi. Walking time to destination: 5 minutes

INQUIRIES: Kannon-ji Temple 082-924-1340

- ▣ 5,000 hydrangeas of 350 varieties will bloom from the middle of June to the beginning of July at Kannon-ji Temple.
- ▣ On June 18, there will be an opening to public of *nehanzu* (a picture of Buddha entering Nirvana), and serving of *amacha* tea. *Matcha* tea will be served during the event period. *Fūrin*, a wind-bell festival will also be held.

Every Wednesday between April 5 and December 27, 2017

☺ July 5, 12, 19 & 26; August 2, 9, 16, 23 & 30 ✧ Special *kagura* performance will be held on August 19 (see below for more information).

Hiroshima Kagura

ひろしまけんみんぶんか ひろしまかぐら ていきこうえん
広島県民文化センター「広島神楽」定期公演

TIME: 7:00 pm – 8:45 pm (The venue will open at 6:00 pm.)

VENUE: Hiroshima Kenmin Bunka Center, Ote-machi, Naka-ku (located near Hondori Shopping Street)

ACCESS: From Kamiya-cho-nishi or Hondori Streetcar Stops, walking time to destination is 3 minutes.

TICKETS: ¥1,000 ✧ All non-reserved seats
✧ Tickets will be sold from 5:00 pm on the performance date at the center.
There are no advance tickets.

INQUIRIES: Hiroshima Kenmin Bunka Center 082-245-2311

✧ “Hiroshima Kagura” Special Performance ✧

DATE & TIME: Sat., August 19 1:00 pm (The venue will open at noon.)

VENUE: Hiroshima Kenmin Bunka Center

TICKETS: ¥2,000 ✧ All reserved seats
✧ Advance tickets will be sold from Mon., July 3 at the center.
✧ Tickets will be sold from 11:00 am on the performance date at the center.

Sun., July 2 & 16

Hiroshima Minato Marché

ひろしまみなとマルシェ

TIME: 8:00 am – 2:00 pm

PLACE: Open Space between East and West Terminal of Hiroshima Port, Minami-ku

ACCESS: Take the No. 1, 3 or 5 streetcar bound for Hiroden Ujina or Hiroshima Port and get off at the last stop, Hiroshima Port.

INQUIRIES: Hiroshima Minato Marché Office 082-255-6646

- ▣ You can buy and taste locally-grown fresh vegetables and other food products at the marché.

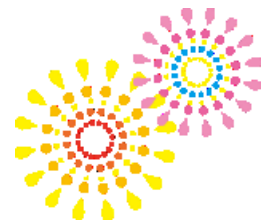
Please feel free to contact the International Exchange Lounge at 082-247-9715.

E-mail: golounge@pcf.city.hiroshima.jp

July 2017

Sun., July 9**Sister and Friendship City Day Event: Journée de Montréal**しまい ゆうこうと し ひ きねん
姉妹・友好都市の日記念イベント モントリオールの日**TIME:** 1:30 pm – 3:45 pm**PLACE:** Fukuya Department Store, 6th Floor, Hiroshima Station location, Minami-ku**ACCESS:** From JR Hiroshima Station, walking time to destination is 3 minutes.**ADMISSION FEE:** Free**INQUIRIES:** Hiroshima Heiwa Bunka Center, Kokusai Kouryu Kyouryoku Ka (Hiroshima Peace Culture Foundation, International Relations and Cooperation Division) 082-242-8879

☐ This event includes a special performance by Ponta, a Canadian street performer, sales of Canadian products, an exhibition, etc.

Sat., July 22**2017 Hiroshima Minato Fireworks Festival**ひろしま ゆめ はなびたいかい
2017広島みなと 夢 花火大会**TIME:** 8:00 pm – 9:00 pm ♦ Opening event: 7:00 pm – 7:40 pm**PLACE:** Hiroshima Port, Minami-ku**ACCESS:** Take a streetcar bound for Hiroshima-ko (Hiroden Ujina Line) and get off at Kaigan-dori. Walking time to destination: 15 minutes**INQUIRIES:** Hiroshima Matsuri Committee 082-247-6805☐ The fireworks will be canceled or postponed if it rains heavily on the 22nd.**Sun., July 30****Fiestas Patrias**どくりつきねん び
ペルー独立記念日のイベント**TIME:** 11:00 am – 6:00 pm**PLACE:** Hiroshima-shi Ryugakusei Kaikan, 1-1 Nishi-koujin-machi, Minami-ku**ACCESS:** From JR Hiroshima Station (south exit), walking time to destination is 5 minutes.**FEE:** ¥1,000 (with one free drink) ♦ Children: Free**INQUIRIES:** CAFÉ Restaurant Peru and Brasil 080-3890-9507 (Vivi)

☐ This is an event to celebrate the Fiestas Patrias, Peru's Independence Day.

Tue., August 1**Memorial Service for the Atomic Bomb Victims at Shukkeien Garden**げんぱくぎせいしやいれいくようしき
原爆犠牲者慰霊供養式**PLACE:** Shukkeien Garden**ACCESS:** Take a streetcar on the Hiroden Hakushima Line and get off at Shukkeien-mae. Walking time to destination: 5 minutes**FEE:** Admission fee for the garden (Adults-¥260, University & High school students-¥150)
(Junior high & Elementary school students-¥100)**INQUIRIES:** Shukkeien Garden 082-221-3620**Sat., August 5 & Sun., August 6****Sumiyoshisan Festival**

すみよしさん

TIME: There is no specific starting time. Most people come in the evening.**PLACE:** Sumiyoshi Shrine, Sumiyoshi-cho, Naka-ku**ACCESS:** ① Take the No. 24 bus and get off at Sumiyoshi-cho. Walking time to destination: 5 minutes

② Take the No. 3, 6, or 10 bus and get off at Kako-machi. Walking time to destination: 3 minutes

INQUIRIES: Sumiyoshi Shrine 082-241-0104

☐ Fireworks will be set off from 8:00 pm on both days. Rowing of an ancient-style boat in the river and kagura performance will also be held.

Please feel free to contact the International Exchange Lounge at 082-247-9715.

E-mail: golounge@pcf.city.hiroshima.jp

July 2017

**Sun., August 6****The 72nd Peace Memorial Ceremony**だい かいへいわきねんしきてん
第72回平和記念式典**TIME:** 8:00 am – 8:45 am**PLACE:** In front of the Cenotaph for the A-Bomb Victims, Peace Memorial Park**INQUIRIES:** *Shimin Katsudo Suishin Ka* (Citizens Activities Promotion Division, the City of Hiroshima)
082-504-2103

☐ On August 6th, at 8:15 am, at the sound of a bell rung by a representative from the bereaved families and one youth representative, a moment of silence is observed for the deceased. At that moment, factory sirens as well as temple and church bells are rung throughout the city, and Hiroshima is deeply wrapped in prayer. The Mayor of Hiroshima delivers a peace declaration addressed to the whole world at the ceremony. On this day, people recall what happened on August 6th, 1945, and in their prayers, ponder the meaning of peace.

<NOTICE>

Reserved seating with receivers that will broadcast simultaneous English interpretations to non-Japanese speaking guests of the 2017 Peace Memorial Ceremony is now full. If you decide to apply now, you will be added to a waiting list.

Seating is available in the Unassigned Seating area. However, as seating is open to anyone on a first come, first served basis, you are encouraged to arrive early. Reservations are not accepted for this seating area. Please note that the International Conference Center will be open to the public and will display live footage (Japanese only, no interpretation receivers available) of the Ceremony in the Himawari Room of the 2nd basement floor.

Please see the Hiroshima City website (<http://www.city.hiroshima.lg.jp/www/contents/1493372490844/index.html>) or contact the International Relations Division of the City of Hiroshima (Tel: 082-504-2106 / e-mail: kokusai@city.hiroshima.lg.jp) for more information.

Sun., August 6**Floating Paper Lanterns**

ピースメッセージとうろうながし

TIME: 6:00 pm – 9:30 pm ◆ Participants will be accepted from 6:00 am to 9:00 pm on the day of.**PLACE:** • Chuo Area: South Side of the Atomic Bomb Dome

• Fukushima Area: South Side of the Shin-koi-bashi Bridge (east side)

• Koi Area: South Side of the Shin-koi-bashi Bridge (west side)

ACCESS: Get off at Genbaku Dome-mae Streetcar Stop.**INQUIRIES:** *Toro-nagashi* Executive Committee 082-245-1448*Hiroshima Matsuri linkai* 082-247-6805

☐ Paper lanterns will be floated down the river to console the souls of the deceased. Lantern (¥600) will be sold at four places inside the Peace Memorial Park.

Sat., August 19 – Sun., August 27**The 29th Affinis Music Festival 2017 in Hiroshima**

アフィニス夏の音楽祭 2017広島

VENUE: JMS Aster Plaza, Kako-machi, Naka-ku**ACCESS:** Take the No. 24 bus and get off at Kako-machi. Walking time to destination: 2 minutes**SCHEDULE:**✧ **Chamber Music Concerts****DATE & TIME:** Aug. 22 – 24, 7:00 pm (Doors will open at 6:30 pm.)✧ **The 29th Affinis Music Festival Orchestra Grand Concert****DATE & TME:** Aug. 27, 3:00 pm (Doors will open at 2:00 pm.)✧ **Promenade Concerts****DATE & TME:** Aug. 22 – 24, 5:30 pm

Please feel free to contact the International Exchange Lounge at 082-247-9715.

E-mail: golounge@pcf.city.hiroshima.jp

July 2017

🎵 Seminars

DATE & TME: Aug. 19 – 23 & 25 🎵 Some seminars are not open to public.

🎭 Cultural Programs for Citizens ✧ Free admission program

✦ Lunchtime Concerts

DATE & TME: Aug. 19 – 22, 12:30 pm

✦ Mini Concerts

DATE & TME: ① Aug. 20, 7:00 pm ② Aug. 21, 7:00 pm

VENUES: ① Aug. 20: Lobby, RIHGA Royal Hotel Hiroshima

② Aug. 21: Formerly the Bank of Japan Hiroshima Branch

✦ AIUE Orchestra

DATE & TME: Aug. 26, 3:00 pm

☺ This is an orchestra concert for elementary school students. Although admission is free, numbered ticket will be required. Applications for the numbered tickets will be accepted from Jul. 1 to Jul. 31.

✦ AIUE Music Lesson

DATE & TME: Aug. 26, 1:30 pm

☺ Participants will be selected from the participants of AIUE Orchestra.

✦ Minna de Orchesra!

DATE & TME: Aug. 24, 4:00 pm

☺ This is a participatory orchestra to commemorate the finale of the festival in Hiroshima. Please check the website for more information.



TICKETS:

❖ **Seminar:** One day pass-¥500 All program pass-¥1,000

☺ You can attend seminars with concert tickets.

❖ **Chamber Music Concert:** Adults-¥2,500 Students-¥1,000 (all non-reserved seats)
✧ Student tickets are only sold at JMS Aster Plaza and Kumin Bunka Centers and the Hiroshima Symphony Orchestra Office.

❖ **Grand Concert:** S-¥5,200 A-¥4,200 B-¥3,200 Students-¥1,500
✧ B seat tickets are not sold at JMS Aster Plaza and Kumin Bunka Centers
✧ Student tickets are only sold at the Hiroshima Symphony Orchestra office.

TICKET SALE DATE: Now on sale

TICKET OFFICES: EDION Hiroshima (SUNMALL, 1F), YAMAHA Music, Fukuya Department Stores (Hatchobori and Hiroshima Station), *Alpark* Tenmaya, JMS Aster Plaza, Kumin Bunka Centers, Hiroshima Symphony Orchestra Office & Chugoku Shimbun

INQUIRIES:

❖ About the Music Festival: Affinis Arts Foundation 03-5797-7135 E-mail: info@affinis.or.jp
HP: <http://www.affinis.or.jp/>

❖ About the Cultural Programs: Hiroshima City Bunka Zaidan 082-244-0750
E-mail: bunka@cf.city.hiroshima.jp HP: <http://affinis-hiroshima.com/>

❖ About the Grand Concert: Hiroshima Symphony Orchestra Office 082-532-3080
E-mail: info@hirokkyo.or.jp HP: <http://hirokkyo.or.jp/>

Sat., October 28

2017 Autumn Sumo Tour in Hiroshima (*Ozumo Aki Basho*)

おおずもう あ き ば し ょ
大相撲安芸場所

TIME: 8:00 am – 3:00 pm

VENUE: Hiroshima Sun Plaza Hall, Nishi-ku

ACCESS: From JR Shin Inokuchi Station (JR Sanyo Line) or Shoko Center Iriguchi Streetcar Stop (Hiroden Miyajima Line), walking time to destination is 5 minutes.

Please feel free to contact the International Exchange Lounge at 082-247-9715.

E-mail: golounge@pcf.city.hiroshima.jp

July 2017

TICKETS:1st Floor

- “Tamari” Seats (ringside)
 - S* - ¥14,000/person A* - ¥13,000/person B* - ¥12,000/person
- Chair Seats
 - C - ¥9,000/person D - ¥8,000/person

<Seats with “*”> You can take a special sumo cushion home as a souvenir.

2nd Floor (all non-reserved seats)

- Chair Seats - ¥5,000/person ■ Wheelchair Seatings: ¥20,000 (two seats)

HOW TO ORDER TICKETS:

Ticket orders will be accepted by e-mail, fax or *ofuku hagaki* (return postcard). Please see the website (<http://www.sumoaki-hiroshima.com/>) for more information. A lottery may be held if there are more applicants than tickets available.

◇ You can order a *bento* (lunch box; ¥2,000) with tea as well.

◇ You may not be allowed to bring any food or drink to the venue other than this *bento*.

INQUIRIES: Ozumo Aki Basho Office 082-292-5559 HP: <http://www.sumoaki-hiroshima.com/>

Events Held on Miyajima

Fri., July 7

Seven Gods of Fortune Festival

しちふくじんじゆふくさい
七福神授福祭



TIME: From 11:00 am onward

PLACE: Daishoin Temple, Miyajima

ACCESS: Get off at JR Miyajima-guchi Station (JR Sanyo Line) or the Miyajima Streetcar Stop (Hiroden Streetcar Miyajima Line), then take a ferry to Miyajima.

INQUIRIES: Daishoin Temple 0829-44-0111

▣ Buddhist music service in dedication to *Shichifukujin* (Seven Gods of Fortune) will be held.

Sun., July 16

Miyajima Sundance 2017

TIME: 10:00 am – 8:00 pm

PLACE: Miyajima Tsutsumigaura Natural Park, Miyajima

ACCESS: Get off at JR Miyajima-guchi Station (JR Sanyo Line) or the Miyajima Streetcar Stop (Hiroden Streetcar Miyajima Line), then take a ferry to Miyajima. Then take a bus or walk 40 min. from Miyajima Pier. A bus to the park runs from Miyajima Pier.

TICKETS: Advance-¥2,000 At the door-¥3,000

◇ Free admission for junior high school students and under

INQUIRIES: Barcos Group info@barcosgroup.com HP: <http://barcosgroup.com/sundance.html>

▣ Various events such as dance, DJ and live performances, foam party, etc. will be held.

Thurs., July 27

Ichitate-sai

いちたてさい
市立祭

TIME: From 9:00 am onward

PLACE: Itsukushima Shrine, Miyajima

ACCESS: Get off at JR Miyajima-guchi Station (JR Sanyo Line) or the Miyajima Streetcar Stop (Hiroden Streetcar Miyajima Line), then take a ferry to Miyajima.

FEE: Admission fee for Itsukushima Shrine

Adults & University students-¥300 High school students-¥200
 Junior high & Elementary school students-¥100

Please feel free to contact the International Exchange Lounge at 082-247-9715.

E-mail: golounge@pcf.city.hiroshima.jp

July 2017

INQUIRIES: Itsukushima Shrine 0829-44-2020

▣ After the ritual ceremony, *bugaku* (traditional Japanese imperial court dance music) will be performed.

Tue., August 8

Miyajima Kangen-sai Festival かんげんさい 管絃祭

TIME: From 3:00 pm onward

PLACE: Itsukushima Shrine and other shrines on Miyajima

ACCESS: Get off at JR Miyajima-guchi Station (JR Sanyo Line) or the Miyajima Streetcar Stop (Hiroden Streetcar Miyajima Line), then take a ferry to Miyajima.

FEE: Admission fee for Itsukushima Shrine

(Adults & University students-¥300 High school students-¥200
Junior high school & Elementary school students-¥100)

INQUIRIES: Itsukushima Shrine 0829-44-2020

▣ The *Kangen-sai* Festival began in the Heian Era (A.D.794 – A.D.1185). *Kangen* is traditional Japanese music played with *San-kan* (three flutes), *San-ko* (three drums) and *San-gen* (three strings). The *Kangen-bune* boat cruises while musicians on-board play this unique music through Otorii Gate to the Jigozen Shrine located on the opposite bank. It then proceeds to Nagahama and Omoto Shrines on Miyajima Island and returns to Itsukushima Shrine. Itsukushima *Kangen-sai* Festival is one of the three largest boat festivals in Japan.

Tue., August 8

Lantern Parade in Miyajima ぎょうれつ ちょうちん行列

TIME: From 7:30 pm onward

PLACE: Lanterns will be given out for free in front of Nagahama Shrine.

ACCESS: Get off at JR Miyajima-guchi Station (JR Sanyo Line) or the Miyajima Streetcar Stop (Hiroden Streetcar Miyajima Line), then take a ferry to Miyajima.

INQUIRIES: *Miyajima Kanko Kyokai* (Tourist Association) 0829-44-2011

▣ This parade uses lanterns to welcome the *Kangen-bune* boat to Nagahama Shrine on its return from Jigozen Shrine. After the boat reaches Nagahama Shrine, participants will parade towards Itsukushima Shrine.

Thurs., August 10

Shiman Hassen-nichi (48,000-day) Kannon Festival しまんはっせんにち かんんのんたいさい 四万八千日観音大祭

TIME: From 10:00 am onward

PLACE: Daishoin Temple, Miyajima

ACCESS: Get off at JR Miyajima-guchi Station (JR Sanyo Line) or the Miyajima Streetcar Stop (Hiroden Streetcar Miyajima Line), then take a ferry to Miyajima.

INQUIRIES: Daishoin Temple 0829-44-0111

▣ A ritual for Kannon, one of the most popular Buddhist Gods in Japan, will be held. It is said that a visit to the temple on this day gives you merit for 48,000 days.

Thurs., August 17 & Fri., August 18

Miyajima Odori (Dance) Festival みやじまおど 宮島踊りの夕べ

TIME: From 7:30 pm onward

PLACE: Mikasa-no-hama Beach (In front of Itsukushima Shrine, Miyajima)

ACCESS: Get off at JR Miyajima-guchi Station (JR Sanyo Line) or the Miyajima Streetcar Stop (Hiroden Streetcar Miyajima Line), then take a ferry to Miyajima.

INQUIRIES: *Miyajima Geino Hozon-kai* Office 0829-44-0757



Please feel free to contact the International Exchange Lounge at 082-247-9715.

E-mail: golounge@pcf.city.hiroshima.jp

July 2017

▣ Miyajima *Odori* is a type of traditional Japanese *bon* dance that originated about 500 years ago to console the souls of the pirates that sank to the bottom of the Seto Inland Sea.

Events Held Outside of Hiroshima City



Sat., Sun. & national holidays

Sake Brewery Opening ようこそ 醸 華町西条 じょう か まちさいじょう

PLACE: Sake Breweries, Higashihiroshima City

ACCESS: Get off at JR Saijo Station (JR Sanyo Line).

FEE: Free

INQUIRIES: Saijo Sakagura-dori Kanko Annai-jo

Tel. & Fax 082-421-2511 (10:00am – 4:00pm, closed on Mondays)

▣ Some sake breweries open to the public on Sat., Sun. & national holidays. Signboards with the words “ようこそ 醸 華町西条” (“Yokoso Jokamachi Saijo”) will be placed in front of the opened breweries.

Thurs., June 1 – Sun., September 10

Cormorant Fishing in Miyoshi みよし うかい 三次の鵜飼

TIME: From 7:30 pm onward (Cruising will be canceled if it rains heavily.)

✧ Please come to the reception by 7:00pm.

PLACE: Tokaichi Shinsui Koen (Park), Miyoshi City

ACCESS: From JR Miyoshi Station (JR Geibi Line), walking time to destination is 15 minutes.

PASSENGER FARE:

◆ Sunday – Thursday:

- Regular fare: Junior high school students and up-¥3,000 Elementary school students-¥1,500
- Fare with a chair: Junior high school students and up-¥3,500 Elementary school students-¥1,750

◆ Friday & Saturday:

- Regular fare: Junior high school students and up-¥3,300 Elementary school students-¥1,650
- Fare with a chair: Junior high school students and up-¥3,800 Elementary school students-¥1,900

✧ Please note that reservations are required. Reservations are accepted until 5:00 pm on the day before the day you want to go.

✧ Reservations will not be accepted on August 19 (Miyoshi fireworks festival).

RESERVATIONS & INQUIRIES: Miyoshi City Kanko Kyokai (Tourist Association)

0824-63-9268 E-mail: miyo-344@bz01.plala.or.jp

▣ Fishermen start out at night with lanterns and cormorants on small wooden boats. The birds are trained to catch Ayu (sweetfish). Very unique white-colored cormorants (a type of water fowl, usually with black feathers) were donated by Yaan in Szechuan, China, Miyoshi's friendship city, and can be seen only in Miyoshi.

Sat., July 8

Otebi Festival てびしんじ お手火神事

TIME: From 8:00 pm onward

PLACE: Nunakuma Shrine, Tomo-cho, Fukuyama City

ACCESS: Take a bus from JR Fukuyama Station (JR Sanyo Line) and get off at Tomo-no-ura. Walking time to destination: 10 minutes

INQUIRIES: Nunakuma Shrine 084-982-2050

▣ *Otebi* is a fire festival in which men carry three torches weighing about 150kg and offer them to the shrine. This is a traditional festival which has been held since the Kamakura Period (A.D. 1185 – A.D. 1393). This is designated as a Fukuyama City intangible folklore cultural asset.

Please feel free to contact the International Exchange Lounge at 082-247-9715.

E-mail: golounge@pcf.city.hiroshima.jp

July 2017

July 7 (Fri.), 8 (Sat.), 9 (Sun.) & 10 (Mon.)**Onomichi Antique Market**おのみちだいこつとうさい
尾道大骨董祭**TIME:** 8:00 am – 4:00 pm ✧ 8:00 am – noon on Monday**PLACE:** *Tennen Onsen Onomichi Fureai no Sato* (spa facilities), Mitsugi-cho, Onomichi City**ACCESS:** ① From JR Shin-Onomichi Station (JR Sanyo *Shinkansen* Line), driving time by taxi to destination is 25 minutes.

② From Onomichi-kita I.C. on the Chugoku Yamanami Expressway, driving time to destination is 10 minutes.

③ Take a free shuttle bus to the spa from JR Higashi Onomichi Station (JR Sanyo Line).

Departure Time (one round service a day)

• JR Higashi Onomichi Station: 8:55 am

• Spa: 3:10 pm

INQUIRIES: *Iroha* Antique Market Office 090-3155-8229**Mon., July 10****Sakagura Walking Tour (Free)**さかぐら
酒蔵のまち てくてくガイド**TIME:** Tour will start on an as-needed basis between 10:00 am and 11:00 am.**MEETING PLACE:** *Saijo Sakagura-dori Kanko Annai-jo* (Tourist Information Center), Higashihiroshima City**ACCESS:** Get off at JR Saijo Station (JR Sanyo Line).**PARTICIPATION FEE:** Free**INQUIRIES:** *Saijo Sakagura-dori Kanko Annai-jo* Tel. & Fax 082-421-2511☐ A volunteer guide will show you *Sakagura-dori* (Sake Brewery Street). During the tour you will be able to taste *sake* and the purified water that is used to make it.☐ A regular guided tour (fee-based) is also held every day except on the 10th. Advance reservations are required by a week before the day you wish to An English speaking guide is available. Please contact the *Saijo Sakagura-dori* Tourist Information Center in advance.**Fri., July 14 – Sun., July 16****Tenjin-sai Festival**てんじんさい
天神祭**TIME:** ♦ Jul. 14: From 5:00 pm onward ♦ Jul. 15: From 4:00 pm onward ♦ Jul. 16: From 2:00 pm onward**PLACE:** Misode Tenmangu Shrine, Onomichi City**ACCESS:** From Ropeway Sanroku Station, walking time to destination is 2 minutes.

👉 Ways to get to Ropeway Sanroku Station 👉

① From JR Onomichi Station (JR Sanyo Line), walking time to destination is 15 minutes.

② Take a bus from JR Onomichi Station and get off at Nagae-guchi.

INQUIRIES: Misode Tenmangu Shrine 0848-37-1889☐ This is Misode Tenmangu Shrine's summer festival. People carrying *mikoshi*, a portable *shinto* shrine, will go up and down the 55 steps to the shrine.**Fri., July 14 – Sun., July 16****Gion Matsuri Festival at Susanoo Shrine**ぎおんまつり
祇園祭**SCHEDULE:** ♦ Jul. 14 – Pre event ♦ Jul. 15 & 16 – Main events (carrying a *mikoshi*)**PLACE:** Susanoo Shrine, Fukuyama City**ACCESS:** From JR Kamidote Station (JR Fukuen Line), walking time to destination is 3 minutes.**INQUIRIES:** Susanoo Shrine 0847-51-2958**Sat., July 15****Kurahashi Kentoshi-sen Festival**けんとうしせん
くらはし遣唐使船まつり**TIME:** 4:00 pm – 9:00 pm ♦ Fireworks festival will also be held from 8:15 pm.**PLACE:** Katsurahama Beach, Kurahashi-cho, Kure City

Please feel free to contact the International Exchange Lounge at 082-247-9715.

E-mail: golounge@pcf.city.hiroshima.jp

July 2017

ACCESS: Take a bus from JR Kure Station (JR Kure Line) and get off at Katsurahama Onsen Kan.

INQUIRIES: Kurahashi Shimin Center 0823-53-1111

☐ It is said that Katsurahama beach was one of the ports of call of *Kentoshi*, envoys to the Tang Court in China between the 7th and the 9th century.

Sat., July 15

Mizu Matsuri (Water Festival)

み お ち ょ う み づ ま つ
水 尾 町 の 水 祭 り



TIME: 5:00 pm – 9:00 pm

PLACE: Around Kumano Gongen Shrine and Mio-no-shoji, Onomichi City

ACCESS: From JR Onomichi Station (JR Sanyo Line), walking time to destination is 15 minutes.

INQUIRIES: Mamoru Kai (Imagawa Chaho) 0848-37-3766

☐ This is a festival handed down from the Edo Period (A.D.1603 – A.D.1868). The festival will be postponed until Sun., July 16 if it rains heavily on the 15th.

Sun., July 16

Tadanoumi Gion Festival & Mikoshi Parade

ただのうみぎ おんまつり ぎょうじ
忠 海 祇 園 祭 と み こ し 行 事

TIME: Highlight of the Event – around 3:00pm

PLACE: Around JR Tadanoumi Station, Takehara City

ACCESS: Get off at JR Tadanoumi Station (JR Kure Line).

INQUIRIES: Tadanoumi Kaihatsu Yahata Shrine 0846-26-0859

☐ Men who are and will be 20 years of age this year carry *mikoshi*, a portable shrine, and parade through the street of the town all day. The festival is designated as one of Hiroshima Prefecture's intangible folklore cultural assets.

Thurs., July 20

Hatsuka-no-ichi Market

は つ か い ち
廿 日 の 市



TIME: 8:00 am – 10:00 am

PLACE: The open Space in front of Hatsukaichi City Hall, Hatsukaichi City

ACCESS: From Hatsukaichi Shiyakusho-mae (Hiroden Streetcar Miyajima Line), walking time to destination is 5 minutes.

INQUIRIES: Hatsukaichi Kanko Kyokai (Tourist Association) 0829-31-5656

Sat., July 22

Onomichi Sumiyoshi Fireworks Festival

すみよしはなび
おのみち住吉花火まつり

TIME: 7:30 pm – 9:15 pm ◆ Festival at Sumiyoshi Shrine will start from 2:00 pm onward.

PLACE: Onomichi Suido, Onomichi City

ACCESS: From JR Onomichi Station (JR Sanyo Line), walking time to destination is 15 minutes.

INQUIRIES: Onomichi Sumiyoshi Kai 0848-22-2165

☐ The fireworks will be postponed until July 23 (Sun.) or 24 (Mon.) if it rains heavily on the 22nd.

Sat., July 22

2017Nuta Hongo Summer Festival

ぬ た ほ ん ご う な つ
2017沼田本郷夏まつり

TIME: 3:30 pm – 9:00 pm ☆ Fireworks festival will be held in the evening.

PLACE: Summer Festival – Around Mihara City Hall, Hongo Branch, Mihara City

Fireworks Festival – The right bank of Nuta-gawa River (upper stream of *Kohara-bashi* Bridge),
Mihara City

ACCESS: From JR Hongo Station (JR Sanyo Line), walking time to destination is 5 minutes.

Please feel free to contact the International Exchange Lounge at 082-247-9715.

E-mail: golounge@pcf.city.hiroshima.jp

July 2017

INQUIRIES: Executive Committee 0848-86-5717 (Mon. – Fri., 9 am – noon)
 ☐ Fireworks festival, concert, bazaar, etc.
 ☐ The festival will be postponed until Sun., July 23 if it rains heavily on the 22nd.

Sat., July 22

Kurose Fureai Summer Festival くろせ ふれあい夏まつり

TIME: 4:00 pm – 9:00 pm

PLACE: Around Kurose Shogai Gakushu Center, Kurose-cho, Higashihiroshima City

ACCESS: ① From JR Higashihiroshima Station (JR Sanyo Line), drive time to destination is 25 minutes.
 ② Take a bus from JR Saijo Station (JR Sanyo Line) and get off at Naka Kurose. Walking time to destination: 5 minutes

INQUIRIES: Executive Committee 0823-82-3075

Sat., July 22

Tadanoumi Tenjin Yo-ichi Summer Festival ただのうみてんじん よいち 忠海天神夜市

TIME: 5:00 pm – 9:00 pm

PLACE: In front of JR Tadanoumi Station, Takehara City

ACCESS: Get off at JR Tadanoumi Station (JR Kure Line).

INQUIRIES: Tadanoumi Hohoemi Town Shoten Kai 0846-26-1325

☐ Traditional local performing arts, kiosks, etc.

Sat., July 22

Kinoe Ju-shichi-ya-sai (Festival & Boat Race) & Fireworks Festival

じゅうしちやさい かいでんまきょうそう かいじょうはなびたいかい
 きのえ十七夜祭 (權伝馬競争)・海上花火大会

TIME: ♦ Ju-shichi-ya-sai Festival: 9:00 am – 8:40 pm ♦ Fireworks Festival: 8:00 pm – 8:40 pm

PLACE: Ju-shichi-ya-sai Festival – Kinoe Area, Osaki-kamijima-cho

Fireworks Festival – Around Kinoe Port, Osaki-kamijima-cho

ACCESS: Get off at JR Takehara Station (JR Kure Line) and go to the Takehara Port by bus or on foot.
 Then get on a ferry and get off at Tenma Port. Walking time to destination: 10 minutes

INQUIRIES: Osaki-kamijima-cho Kanko Kyokai (Tourist Association) 0846-65-3455

☐ The fireworks will be postponed until Sun., July 23 if it rains heavily on the 22nd.

Sat., July 29

Kure Fireworks Festival くれ なつ かいじょうはなびたいかい 呉の夏まつり「海上花火大会」

TIME: 8:00 pm – 8:45 pm

PLACE: Around Kure Port, Kure City

ACCESS: From JR Kure Station (JR Kure Line), walking time to destination is 20 minutes.

INQUIRIES: Kure Matsuri Kyokai 0823-21-0151

☐ This will be canceled if it rains heavily on the 29th.

Sat., July 29

Miyoshi Kinsai Festival みよし 三次きんさいまつり

TIME: 4:00 pm – 10:00 pm ♦ Parade will start from 5:15 pm onward.

PLACE: Around Miyoshi-machi and Tokaichi Chuo-dori Street, Miyoshi City

ACCESS: From JR Miyoshi Station (JR Geibi Line), walking time to destination is 10 minutes.

INQUIRIES: Executive Committee 0824-62-8868



Please feel free to contact the International Exchange Lounge at 082-247-9715.

E-mail: golounge@pcf.city.hiroshima.jp

July 2017

Sat., July 29**Innoshima Suigun Fireworks Festival** すいぐんはなびたいかい いんのしま水軍花火大会**TIME:** 8:30 pm – 9:00 pm**PLACE:** Around Habu Port, Innoshima, Onomichi City**ACCESS:** ① From Innoshima-kita I.C. on the Shimanami Kaido Expressway, drive time to destination is 15 minutes.

② Take an express bus (Flower Liner) from Hiroshima Bus Center (Sogo Hiroshima Department Store, 3F) and get off at the last stop, Habuko-mae.

③ Take a bus bound for Habu Port from JR Onomichi Station (JR Sanyo Line) and get off at the last stop, Habu-ko (a 50 min. bus ride).

INQUIRIES: Executive Committee 0845-26-6212☐ The fireworks will be postponed until Sun., July 30 if it rains heavily on the 29th.**Sat., July 29 & Sun., July 30****Bingo Kokufu Festival** びんごこくふ 備後国府まつり**PLACE:** ♦ Festival: Central area of Fuchu City ♦ Fireworks festival: *Fuchu Gakuen Kita* Ground**ACCESS:** From JR Fuchu Station (JR Fukuen Line), walking time to destination is 5 minutes.**INQUIRIES:** Executive Committee 0847-45-0678☐ A fireworks show will be held on the 30th (7 pm – 9 pm).**Sun., July 30****Summer Festival at Etajima 2017** えたじま サマーフェスタ江田島2017**PLACE:** *Kaijo Jiei-tai, Dai-ichi Jukka Gakko* (Japan Marine Self-Defense Force, First Service School and Officer Candidate School), Etajima City**ACCESS:** Get on a ferry at Hiroshima Port and get off at Koyo Port. It is 5 min. by taxi or bus from there.**INQUIRIES:** *Kanko Shinko Ka*, Etajima City Hall 0823-43-1644

☐ A fireworks show will be held in the evening.

Sat., August 5 & Sun., August 6**Takehara Sumiyoshi Festival** たけはらすみよし 竹原住吉まつり**PLACE:** Sumiyoshi Shrine, Takehara City**ACCESS:** From JR Takehara Station (JR Kure Line), walking time to destination is 15 minutes.**INQUIRIES:** Executive Committee 0846-22-0298

☐ This is a traditional summer festival in Takehara City that has been observed since the Edo period.

Events Held in Yamaguchi Prefecture**Thurs., June 1 – Sun., September 10****Cormorant Fishing in Iwakuni** きんたいきょう 錦帯橋 うかい の鵜飼**TIME:** 7:00 pm – 9:00 pm**PLACE:** Nishiki-gawa River & Kintaikyo Bridge, Iwakuni City**ACCESS:** Get off at JR Iwakuni Station (JR Sanyo Line) and take a bus bound for Kintaikyo Bridge. Get off at Kintaikyo (a 20 min. bus ride).**PASSENGER FARE:** Adults-¥2,000 Children-¥1,000

◇ The fare will be temporarily changed on August 5, the day of the fireworks festival.

RESERVATIONS & INQUIRIES: *Kintaikyo Ukai Office* 0827-28-2877

☐ Originating about 400 years ago, cormorant fishing under lit lanterns is a summer tradition in Iwakuni.

Please feel free to contact the International Exchange Lounge at 082-247-9715.

E-mail: golounge@pcf.city.hiroshima.jp

July 2017

Sat., July 15**Iwakuni Minato-matsuri Fireworks Festival**いわくにこう 岩国港みなとまつりはなびたいかい
祭花火大会**TIME:** 8:00 pm – 9:00 pm**PLACE:** Around Iwakuni-ko Port Building, Iwakuni City**ACCESS:** Take a bus bound for Otake from JR Iwakuni Station (JR Sanyo Line) and get off at Shin-minato.**INQUIRIES:** Executive Committee 0827-23-1055☐ The fireworks will be postponed until Sun., July 16 if it rains heavily on the 15th.**Thurs., July 20****Otake & Waki Fireworks Festival**おおたけ わ き かわ はなびたいかい
大竹・和木 川まつり花火大会**TIME:** 8:00 pm – 9:00 pm**PLACE:** Ozegawa River, Waki-cho (Yamaguchi Pref.) & Otake City (Hiroshima Pref.)**ACCESS:** ① From JR Waki Station (JR Sanyo Line), walking time to destination is 8 minutes.

② From JR Otake Station (JR Sanyo Line), walking time to destination is 15 minutes.

INQUIRIES: Otake Kanko Kyokai (Tourist Association) 0827-52-3105

Waki-cho Town Hall 0827-52-2136

☐ The fireworks will be postponed until Fri., July 21 if it rains heavily on the 20th.**July 29 (Sat.), August 5 (Sat.) & 13 (Sun.)**

◆ Main event will be held on Aug. 13.

Yanai Kingyo Chochin (Goldfish Lantern) Festivalやないきんぎょ まつり
柳井金魚ちょうちん祭り**TIME:** ◆ Jul. 29: 6:00 pm – 8:00 pm ◆ Aug. 5: Not finalized ◆ Aug. 13: 4:30 pm – 9:00 pm**PLACE:** Around JR Yanai Station (JR Sanyo Line), Yanai City**ACCESS:** Get off at JR Yanai Station (JR Sanyo Line).**INQUIRIES:** Shoko Kanko Ka, Yanai City Hall 0820-22-2111

☐ Two thousand goldfish-shaped lanterns will be hung up and there will be old-style vendors, creating an Edo Period atmosphere.

☐ Fireworks will go off at the finale (8:45 pm – 9:00 pm) on the 13th.**Sat., August 5****Nishiki-gawa River Water Festival**にしきがわみず さいてん
錦川水の祭典**TIME:** ◆ Festival: 9:00 am – 9:30 pm

◆ Fireworks Festival: 8:00 pm – 9:30 pm

PLACE: Around Kintaikyo Bridge, Iwakuni City**ACCESS:** Take a bus bound for Kintaikyo Bridge from JR Iwakuni Station (JR Sanyo Line) and get off at Kintaikyo (a 20 min. bus ride). ☆ Extra buses will run from the station on the event day.**INQUIRIES:** Iwakuni City Kanko Kyokai (Tourist Association) 0827-41-2037 (8:30 am – 5:15 pm)☐ The fireworks will be postponed until Sat., August 26 if it rains on the 5th.

☐ An Iwakuni taiko (traditional Japanese drums) performance will also be held in the evening.



Please feel free to contact the International Exchange Lounge at 082-247-9715.

E-mail: golounge@pcf.city.hiroshima.jp

July 2017

Municipal Facilities



Facilities

(Address / Telephone / Open Hours / Closed / Admission Fee / URL)

Admission is generally allowed up to 30 min. prior to closing.


Hiroshima City Forest Park & Insectarium


(173 Fujigamaru, Fukuda-cho, Higashi-ku 732-0036 / Forest Park: 899-8241, Insectarium: 899-8964 / Forest Park: 9:00 am - 4:30 pm; Insectarium: 9:00 am - 4:30 pm / Closed: Forest Park - July 5, 12 & 19; Insectarium - July 5, 12 & 19 / Admission Fees for the Insectarium: Adults-¥510, Seniors & High school students-¥170, Junior high & Elementary school students-Free (Free admission for high school students on Saturdays (except on national holidays and during school holidays)) / Forest Park: <http://www.daiichib-shitei.com/forest/> Insectarium: <http://www.hiro-kon.jp/>)


Events at the Forest Park

Concerts


- ① Sun., Jul. 16 / 11:30 am - noon / *Shibafu Hiroba, Kyukei-jo* / Fee: Free
- ② Sun., Jul. 30 / 10:00 am - 11:15 am / *Shibafu Hiroba, Kyukei-jo* / Fee: Free

 **Lecture on the Grass Whistle** / Sun., Jun. 16 / 1:00 pm - 3:00 pm / *Shibafu Hiroba, Kyukei-jo* / Fee: Free

 **Nature Game** / Mon., Jul. 17 / 1:00 pm - 3:00 pm / *Shibafu Hiroba* ✧ The first 50 participants will be accepted from 12:30 pm on the day of.


 **Watermelon Splitting Contest** / Sun., Jul. 23 / ① 10:30 am ② 1:30 pm / *Shibafu Hiroba, Kyukei-jo* / For elementary school students and under & their guardians (pair) / Participation fee: Free


- ✧ Participants will be accepted from 9:00 am for ① and from 12:30 pm for ② on the day of. The first 50 pairs will be accepted for each time slot. Each contest will finish after five watermelons have been used.

 **Night Opening: Kimodameshi (Test of Courage)** / Sat., Jul. 29 / 6:00 pm - 9:00 pm / *Shibafu Hiroba* / Participation fee: Free


- ✧ Numbered tickets will be distributed from 4:30 pm at the *Dai-ni Chusha-jo* (parking lot) on the day of.
- ✧ Please bring a flashlight with you.
- ✧ This will be canceled if it rains.

Events at the Insectarium

 **Special Summer Exhibition: Beetles and Stag Beetles of the World 2017** / Sat., Jul. 15 - Sun., Sept. 3

 **Summer School** / ① Sun., July 23 ② Sun., July 30 / For elementary school students / Participation fee: Admission fee for the insectarium

TO APPLY: Send an *ofuku-hagaki* (return postcard) with the applicant's name, address, telephone number, grade, the date you wish to attend (① or ②) and the event name **むしむしサマースクール** ("Mushi mushi summer school") to the park postmarked by Thurs., July 6. 7 - 8 participants will be selected at random by a drawing of names for each day.

 **Night Insect Observation** / ① Sat., Jul. 29 ② Sat., Aug. 5 / 8:30 pm - 9:30 pm / For those who can walk in the park by themselves / Participation fee: Free


TO APPLY: Send an *ofuku-hagaki* (return postcard) with applicants' names, address, telephone number, age, the date you wish to attend (① or ②) and the event name **昆虫さがしナイトウォーク** ("Konchu sagashi night walk") to the park postmarked by Thurs., Jul. 13 for ① and by Thurs., Ju. 20 for ②. 100 participants will be selected at random by a drawing of names for each day.

The Hiroshima Botanical Garden


(3-495 Kurashige, Saeki-ku 731-5156 / 922-3600 / 9:00 am - 4:30 pm / Closed on Friday / Adults-¥510, Seniors & High school students-¥170, Junior high and Elementary school students-Free (Free admission for high school students on Saturdays (except on national holidays and during school holidays)) / <http://www.hiroshima-bot.jp/>)

<Exhibitions> Exhibitions will close at 3:30 pm on their last day.


❖ **Tenji Shiryō-kan**

 **Touchuu-kasou** (*Ophiocordyceps sinensis*) / Sat., Jun. 17 - Thurs., Aug. 17

❖ **Tenji Onshitsu** (hothouse exhibitions)

 **Colorful Summer Leaves** / Wed., Jun. 21 - Mon., Jul. 17

<Lectures>

 **Junior Project** / Sun., Jul. 9 / ① 11:00 am - noon ② 1:30 pm - 2:30 pm

Please feel free to contact the International Exchange Lounge at 082-247-9715.

E-mail: golounge@pcf.city.hiroshima.jp

July 2017

- 🌸 **Lecture: Plant Biotechnology (3 lectures total)** / Tue., Jul. 25; Tue., Aug. 1 & 8
 ✧ Participants are required to attend all lectures. / 1:30 pm - 3:30 pm / Fee: Free
To APPLY: Send an *ofuku-hagaki* (return postcard) with your name, address and

telephone number and the event name 植物バ

イオテクノロジー入門講座 (“*Shokubutsu biotechnology nyuumon kouza*”) to the Botanical Garden by Thurs., Jul 6. 20 people will be selected at random by a drawing of names.

- 🌸 **Botanical Class for Families** / Wed., Jul. 26 / 10:30 am - 2:00 pm / For elementary school students (1st-3rd grade) and their guardians / Fee: ¥700 (tentative)

To APPLY: Send an *ofuku-hagaki* (return postcard) with your name, address, telephone number, grade and the event name 親子植物

体験教室 (“*Oyako shokubutsu taiken kyuoshitsu*”) to the Botanical Garden by Thurs., Jul. 6. 30 groups will be selected at random by a drawing of names.

✧ Flower arrangement lesson, outdoor games, exploring the greenhouse, etc.

🏛️ Children's Museum of Culture and Science

(5-83 Moto-machi, Naka-ku 730-0011 / 222-5346 / 9:00 am - 5:00 pm / Closed on July 3, 10, 18, 19, 24 & 31 / Admission fee for planetarium is required (see below). / <http://www.pyonta.city.hiroshima.jp/>)

★ Planetarium ★

👉 Admission Fee for Planetarium:

Adults-¥510, Seniors & High school students-¥250, Junior high & Elementary school students-Free

- ✧ Free admission for high school students on Saturdays (except on most national holidays and during school holidays).
 Admission fee for adults is ¥250 on the second Saturday of every month (except on most national holidays and during school holidays).

👉 Planetarium will be closed on July 20.

☆ Planetarium Program

- ◆ **How to Watch Stars in the Night Sky** (45 min.) / Until Sun., Sept. 10 / Adults-¥510, Seniors & High school students-¥250

Time Schedule

- ✧ Weekdays: 11:00 am
 ✧ Sat., Sun. & national holidays:
 ① 10:00 am ② 3:00 pm

- ◆ **Calendars of Ancient Times** / Until Mon., Jul. 17 / Adults-¥510, Seniors & High school students-¥250

Time Schedule

- ✧ Weekdays: 2:00 pm
 ✧ Sat., Sun. & national holidays:
 ① 11:00 am ② 2:00 pm

- ◆ **Back to the Moon for Good** / Fri., Jul. 21, 2017 - Sun., Jan. 14, 2018 / Adults-¥510, Seniors & High school students-¥250

Time Schedule

- ✧ Weekdays: 2:00 pm
 ✧ Sat., Sun., national holidays & summer holiday season (Jul. 21 - Aug. 31):
 ① 11:00 am ② 2:00 pm

☆ 360° Full Dome Shows

- ◆ **Kaluoka'hina - The Enchanted Reef** - ('10, 40 min.) / Until Fri., Oct. 27 / Adults-¥510, Seniors & High school students-¥250

Time Schedule

- ✧ Weekdays: 3:00 pm
 ✧ Sat., Sun., national holidays: 1:00 pm

- ☆ **Refretarium: Summer Program** / Sat., Jun. 10 - Fri., Sept. 8 (except Sundays) / High school students and up-¥200

Time Schedule

- ✧ Weekdays: 1:00 pm - 1:20 pm
 ✧ Sat., national holiday & weekdays during summer holiday season (Jul. 21 - Aug. 31): 4:00 pm - 4:20 pm
 ✧ This is a program to refresh your mind and body during lunch time while watching the starry sky and listening to music. Although the main target of this program is adults, anyone who wishes to rejuvenate themselves is welcome.

☆ Starry Sky Tour

- ◆ **Tonight's Starry Sky & Astronomical Bodies** / Sundays until Sun., Jul. 16 / 4:00 pm - 4:50 pm / Adults-¥510, Seniors & High school students-¥250
 ◆ **Tonight's Starry Sky & the 40th Anniversary of the Voyager Program** / Sundays between Sun., Jul. 23 and Sun., Oct. 15 (except Jul. 30) / 4:00 pm - 4:50 pm / Adults-¥510, Seniors & High school students-¥250

☆ Astronomical Observation / Sat., Jul. 29

- ◆ **Planetarium Constellation Projection** / 6:30 pm - 7:20 pm ✧ Doors will open at 6:20 pm. / 4F, Planetarium / Fee: Adults-¥510, Seniors & High school students-¥250
 ◆ **Astronomical Observation** / 7:30 pm - 8:30 pm / In front of the museum entrance / Fee: Free



Please feel free to contact the International Exchange Lounge at 082-247-9715.

E-mail: golounge@pcf.city.hiroshima.jp

July 2017

- ✧ In the event of bad weather, outdoors astronomical observations will be canceled. Only the planetarium constellation projection will be held. Please check the museum's website for cancellations.
- ✧ You may attend both or either the constellation projection or the astronomical observation.
- ✧ Reservations are not required.

- ☆ **Summer Concert at the Planetarium 2017** / Sun., Jul. 30 / 4:00 pm - 4:50 pm / Adults-¥510, Seniors & High school students-¥250
- ☆ **Special Constellation Projection for Children: Starry Sky of Tanabata** (Star Festival on July 7) / Thurs., Jun. 1 - Fri., Jul. 7 (except Sundays) / ① 10:00 am - 10:30 am ② 11:00 am - 11:30 am / Adults-¥510, Seniors & High school students-¥250

★ Events ★

- ☆ **Exhibition: Automata** / Fri., Jul. 21 - Sun., Sept. 3 / 3F, Tenji Hall / Fee: Free
- ☆ **Concert** (250 seats) / Sun., Jul. 16 / 1:00 pm - 1:45 pm (Doors will open at 12:45 pm.) / 1F, Apollo Hall / Free admission
- ☆ **Craft Workshops** / Jul. 8 (Sat.), 22 (Sat.), 28 (Fri.) & 30 (Sun.) / 1:00 pm - 3:30 pm / For children under elementary school entry age, elementary school students (1st - 3rd grade) and their guardians / 3F, Kosaku-shitsu (Craft Room) / Fee: ¥30 for materials
- ✧ Each day's program is different. For more information, please contact the museum.
- ☆ **Science Show: Science of Bubbles** / Jul. 23 (Sun.), 29 (Sat.) & 30 (Sun.) / ① 1:30 pm - 2:00 pm ② 3:00 pm - 3:30 pm / 1F, Science Studio / Fee: Free

🔴 The events listed below require advance applications.

To APPLY: Send an *ofuku-hagaki* (return postcard) to the museum, postmarked by each event's application deadline with the following information: applicants' names, address, telephone number, school year and the event name and time you wish to attend.

Science Workshops

- ◆ **Acidity and Alkalinity Experiments with Red Cabbage** / 不思議な色水で遊ぼう (*Fushigina iromizu de asobou*) / Fri., Jul. 21 / ① 10:30 am - noon ② 1:30 pm - 3:00 pm / For elementary school students (1st & 2nd grade) / Fee: ¥300 / Closing date for applications: Fri., Jul. 7 ✧ 16 people will be selected at random by a drawing of names for each time slot.

- ◆ **The World of Fossils & Make a Fossil Replica** / 化石の世界と 3D レプリカ作り (*Kaseki no sekai to 3D replica zukuri*) / Sun., Jul. 23 / ① 9:30 am - noon ② 1:30 pm - 4:00 pm / For elementary (3rd - 6th grade) & junior high school students / Fee: ¥600 / Closing date for applications: Sun., Jul. 9 ✧ 16 people will be selected at random by a drawing of names for each time slot.

- ◆ **Make a Preserved Sea Shell Specimen** / 貝の標本作ってみたいカイ? (*Kai no hyouhon tsukutte minai kai?*) / Wed., Jul. 26 / 1:30 pm - 4:30 pm / For elementary school students / Fee: ¥600 / Closing date for applications: Wed., Jul. 12 ✧ 16 people will be selected at random by a drawing of names.

- ◆ **Flight Science ②: Propeller Aircraft** / 飛行の科学②ジェット機型プロペラ飛行機 (*Hikou no kagaku ② Jet-kigata puropera hikouki*) / Fri., Jul. 28 / ① 9:30 am - noon ② 1:30 pm - 4:00 pm / For elementary (3rd - 6th grade) & junior high school students / Fee: ¥400 / Closing date for applications: Fri., Jul. 14 ✧ 16 people will be selected at random by a drawing of names for each time slot.

- ◆ **Creatures of the Setouchi Sea** / 瀬戸内うらわざマリンピック (*Setouchi urawaza marine-pic*) / Tue., Aug. 1 / ① 9:30 am - noon ② 1:30 pm - 4:00 pm / For elementary school students (1st & 2nd grade) / Fee: ¥300 / Closing date for applications: Tue., Jul. 18 ✧ 16 people will be selected at random by a drawing of names for each time slot.

- ◆ **Power of Starch** / 「デンプン」の力をさぐる (*Denpun no chikara wo saguru*) / Sat., Aug. 5 / ① 9:30 am - noon ② 1:30 pm - 4:00 pm / For elementary school students / Fee: ¥300 / Closing date for applications: Sat., Jul. 22 ✧ 16 people will be selected at random by a drawing of names for each time slot.

- ◆ **Hand-built Radio** / 君も技術者①ペットボトルラジオ (*Kimi mo gijutsusha ① PET bottle radio*) / Thurs., Aug. 10 / ① 9:30 am - noon ② 1:30 pm - 4:00 pm / For elementary (3rd - 6th grade) & junior high school students / Fee: ¥700 / Closing date for applications: Thurs., Jul. 27 ✧ 16 people will be selected at random by a drawing of names for each time slot.

- ◆ **Secrets of Water Strider** / 忍者アメンボのヒミツ (*Ninja amenbo no himitsu*) / Fri., Aug. 11 / 1:30 pm - 4:00 pm / For elementary (3rd - 6th grade) & junior high school students / Fee: ¥100 / Closing date for applications: Fri., Jul. 28 ✧ 16 people will be selected at random by a drawing of names.

Please feel free to contact the International Exchange Lounge at 082-247-9715.


E-mail: golounge@pcf.city.hiroshima.jp

July 2017

- ◆ **Game Programing Lecture 2 / ゲームプログラ
ム教室 2** (“*Game programing kyoushitsu*”) /
Tue., Aug. 15 / ① 1:00 pm - 2:30 pm ② 2:45
pm - 4:15 pm / For elementary (4th - 6th grade)
& junior high school students / Fee: Free /
Closing date for applications: Tue., Aug. 1
✧ 8 people will be selected at random by a
drawing of names for each time slot.

Craft Workshop

- ◆ **Draw a 3D Picture with Styrene Board / スチ
レンボードの貼り絵** (“*Styrene board no
harie*”) / Thurs., Jul. 27 / 9:30 am - 3:30 pm /
For elementary and junior high school students
/ Fee: ¥500 / Closing date for applications:
Thurs., Jul. 13 ✧ 20 people will be selected
for each workshop at random by a drawing of
names.
- ◆ **Enamel Brooch / 七宝焼きのブローチ** (“*Shippo-
yaki no brooch*”) / Tue., Aug. 1 / ① 9:30 am -
noon ② 1:30 pm - 4:00 pm / For elementary
school students / Fee: ¥500 / Closing date for
applications: Tue., Jul. 18
✧ 20 people will be selected at random by a
drawing of names for each time slot.
- ◆ **Tole Painting / トールペイント** (“*Tole
painting*”) / Wed., Aug. 2 / ① 9:30 am - noon
② 1:30 pm - 4:00 pm / For elementary school
students / Fee: ¥1,000 / Closing date for
applications: Wed., Jul. 19 ✧ 20 people will
be selected for each workshop at random by a
drawing of names for each time slot.
- ◆ **Clay Workshop / 粘土で作る工作** (“*Nendo de
tsukuru kousaku*”) / Fri., Aug. 4 / ① 9:30 am -
noon ② 1:30 pm - 4:00 pm / For elementary
school students / Fee: ¥1,000 / Closing date for
applications: Fri., Jul. 21 ✧ 20 people will be
selected at random by a drawing of names for
each time slot.
- ◆ **Wooden Puzzle / 木のパズル絵** (“*Ki no puzzle-
e*”) / Sat., Aug. 12 / ① 9:30 am - noon ② 1:30
pm - 4:00 pm / For elementary school students
/ Fee: ¥800 / Closing date for applications:
Sat., Jul. 29 ✧ 20 people will be selected for
each workshop at random by a drawing of
names for each time slot.

 **Hiroshima City Asa Zoological Park**
(Asa-cho Dobutsuen, Asakita-ku 731-3355 / 838-
1111 / 9:00 am - 4:30 pm / Closed: Thursdays /
Adults-¥510, Seniors & High school students-
¥170, Junior high & Elementary school
students-Free / <http://www.asazoo.jp/>)

- ◆ **Backyard Guide Tour** / Sat., Jul. 1, 8, 15 & 22
/ ① 11:00 am ② 1:30 pm / Please gather
near the entrance at 9:00 am on each activity

day. The first 20 - 40 people can participate.
The number of participants will differ
depending on where you visit. We will explore
a different place on each trip.

- ◆ **Meet the Black Rhinoceros named *Hana*** /
Sat., Jul. 1, 8, 15, 22 & 29 / 1:30 pm - 2:30
pm
✧ The black rhinoceros, *Hana*, is the world's
oldest living black rhinoceros.
- ◆ **Asa Zoo & “Miyaji-marine” (Miyajima Public
Aquarium) Collaborating Event 2017: Stamp
Rally** / Sat., Jul. 15, 2017 - Mon., Jan. 8, 2018
- ◆ **Commemorative Event to Celebrate the
Black Rhinoceros, *Hana*'s, Longevity** / Sat.,
Jul. 15 / 1:15 pm - 1:30 pm
- ◆ **Nature Observation at Rice Paddy** / Sun.,
Jul. 16 / ① 11:00 am - 11:30 am ② 1:00 pm
- 1:30 pm ③ 2:00 pm - 2:30 pm
- ◆ **Summer Greetings** / Sun., Jul. 23 / 11:20 am
- noon
✧ A treat of ice and watermelons will be
given to the animals to help them beat the
summer heat.
- ◆ **Summer School** / ① Wed., Jul. 26 or ② Fri.,
Jul. 28 / 9:30 am - 3:00 pm / For elementary
school students (4th, 5th & 6th grade)
To APPLY: Send an *ofuku-hagaki* (return
postcard) with participant's name, address,
telephone number, gender, name of school you
belong to, grade, the date you wish to attend
(① or ②), whether you have a pet at home,
the kind of pet you have and the event name
サマースクール (“*Summer school*”) to the Zoo
by Fri., Jul. 14. 35 participants will be
selected for each day by a drawing.
- ◆ **Giant Salamander Facility Tour** / Sat., Jul. 29
/ 11:00 am - 11:45 am ✧ Reservations will be
accepted from 9:00am at the main entrance
until 20 spots are filled.

 **Numaji Transportation Museum**
(Hiroshima City Transportation Museum)
(2-12-2 Chorakuji, Asaminami-ku 731-0143 / 878-
6211 / 9:00 am - 5:00 pm / Closed: July 3, 10,
11, 12, 13, 18, 19 & 24 / Adults-¥510, Seniors &
High school students-¥250, Junior high school
students and under-Free /
<http://www.vehicle.city.hiroshima.jp>)

- ◆ **Summer Special Exhibition: Fuels and
Energies for Vehicles** / Fri., Jul. 14 - Sun.,
Sept. 3 / 9:00 am - 5:00 pm / Fee: Museum
admission
- ◆ **Science Show: Sound Experiments** / Sat., Ju.
8 & Sun., Jul. 9 / ① 11:30 am - 11:50 am ②
1:30 pm - 1:50 pm ③ 2:30 pm - 2:50 pm / 1F,
Tamokuteki Hall / Fee: Free

Please feel free to contact the International Exchange Lounge at 082-247-9715.

E-mail: golounge@pcf.city.hiroshima.jp

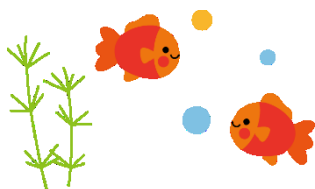
July 2017

- 🏠 **Exhibition on a Streetcar Exposed to the A-Bomb** / Sat., Jul. 15 / ① 11:00 am - noon
② 1:30 pm - 3:00 pm / *Okugai Hiroba* (outdoor open space) / Fee: Free
✧ Exhibition will be canceled if it is bad weather.
- 🏠 **Vehicle Land: Playing with Toy Vehicles** / Sat., Jul. 15 & Sun., Jul. 16 / 1:00 pm - 4:00 pm (entry allowed up to 3:45 pm.) / 1F, *Tamokuteki Hall* / Fee: Free
- 🏠 **Present a Kids Motorcycle License** / Sat., Jul. 29 & Sun., Jul. 30 / ① 10:00 am - noon ② 1:30 pm - 3:30 pm / 1F, *Tamokuteki Hall* / Fee: Free ✧ This is on a first-come, first-served basis.
- 🏠 **Children's Craft Workshops** / Sun., Jul. 9, 16, 23, 30 & Mon., Jul. 17 / 1:00 pm - 3:30 pm / For preschoolers, elementary school students and their guardians / 1F, Craft Room / Fee: ¥50 for materials ✧ The first 100 groups can participate on the day of.
- 🏠 **Craft Workshops for Elementary School Students** / ① 9:30 am - 11:30am ② 1:30 pm - 3:30 pm / 1F, Craft Room / For elementary school students (1st - 4th grade students should be accompanied by their guardians.)
TO APPLY: Send an *ofuku-hagaki* (return postcard) to the museum postmarked by each workshop's application deadline with the applicant's name, name of the school the applicant belongs to, grade, address, telephone number, event date and the workshop name.

① **Electric-powered Propeller Boat 1 / 電動プロペラボート①** (*"Dendou propeller boat 1"*) / Tue., Jul. 25 / Fee: ¥600 / Closing date for applications: Tue., Jul. 11 ✧ 25 people will be selected for each workshop at random by a drawing of names for each time slot.

② **Electric-powered Propeller Boat 2 / 電動プロペラボート②** (*"Dendou propeller boat 2"*) / Wed., Jul. 26 / Fee: ¥500 / Closing date for applications: Wed., Jul. 12 ✧ 25 people will be selected for each workshop at random by a drawing of names for each time slot.

③ **Remote-controlled Bus / リモコン路線バス** (*"Rimokon rosen bus"*) / Sat., Jul. 29 / Fee: ¥400 / Closing date for applications: Sat., Jul. 15 ✧ 25 people will be selected for each workshop at random by a drawing of names for each time slot.



Please feel free to contact the International Exchange Lounge at 082-247-9715.

E-mail: golounge@pcf.city.hiroshima.jp

July 2017

☂ Hiroshima City Ebayama Museum of Meteorology

(1-40-1 Eba-minami, Naka-ku 730-0835 / 231-0177 / 9:00 am - 5:00 pm / Closed on Mondays (except Jul. 17), Jul. 18, 19 & 26 - 28 / Adults-¥100, Seniors & High school students-¥50, Junior high & Elementary school students-Free (Free admission for high school students on Saturdays except during school holidays) / <http://www.ebayama.jp/>)

- ✧ **Science Workshop: Origami Dolphin** / Sat., Jul. 8 / 1:00 pm - 3:30 pm / For junior high school students and under
✧ The first 50 participants will be accepted for each workshop from 10:00 am on the day of.
- ✧ **Science Shows**
◆ **Magical Water Science** / Jul. 9 (Sun.), 15 (Sat.), 16 (Sun.) & 17 (Mon.) / ① 1:30 pm - 2:00 pm ② 3:00 pm - 3:30 pm
◆ **Mystery of Air** / Jul. 21 (Fri.), 22 (Sat.), 23 (Sun.) & 25 (Tue.) / ① 11:00 am - 11:30 am ② 1:30 pm - 2:00 pm ③ 3:00 pm - 3:30 pm
◆ **Experiment Shows** / Jul. 29 (Sat.) & 30 (Sun.) / ① 11:00 am - 11:30 am ② 1:30 pm - 2:00 pm ③ 3:00 pm - 3:30 pm
- ✧ **Summer Special Exhibition: Science of Shaking & Quaking** / Sat., Jul. 29 - Sun., Aug. 27

🏠 Hiroshima City Museum of History and Traditional Crafts

(2-6-20 Ujina-miyuki, Minami-ku 734-0015 / 253-6771 / 9:00 am - 5:00 pm / Closed on Mondays (except Jul. 17), Jul. 18 & 19 / Adults-¥100, Seniors & High school students-¥50, Junior high school students and under-Free / <http://www.hiroins-net.ne.jp/kyodo/>)

🏠 Special Exhibitions

- ◆ **Ghost's Summer Holiday** / Fri., Jul. 21 - Sun., Aug. 27
◆ **Miniature of Ujina Gaisenkan** / Until Tue., Aug. 15

🏠 Special Summer Events

- ◆ **Play Corner** / Jul. 25, 26, 27 & 28; Aug. 1 & 2 / ① 10:00 am - 10:30 am ② 11:00 am - 11:30 am ③ 1:30 pm - 2:00 pm ④ 2:30 pm - 3:00 pm / Participation fee: Free (admission fee for the museum is required.)
✧ The first 30 participants for each time slot will be accepted from 30 min. before each starting time on the day of.
- ◆ **Fire Music Band Concert** / Sun., Jul. 30 / 11:00 am - 11:30 am / Fee: Museum admission ✧ Numbered tickets for the first 60 people will be distributed from 10:15 am on the day of.

- ◆ **Museum Tour** / Sun., Aug. 6 / 9:00 am - 5:00 pm / Participation fee: Free (Admission fee for the museum is required.)

✎ Looking around the museum, which was exposed to the A-bomb, tasting food eaten during and after the war, etc.

- ◆ **Craft Workshops** / Weekdays between Aug. 3 and Aug. 18 & Fri., Aug. 11 / ① 10:00 am - 10:30 am ② 11:00 am - 11:30 am ③ 1:30 pm - 2:00 pm ④ 2:30 pm - 3:00 pm / Participation fee: Free (admission fee for the museum is required.)

✧ The first 30 participants for each time slot will be accepted from 30 min. before each starting time on the day of.

- ◆ **Projection Mapping in Museum (8 minutes)** / Sat., Aug. 19 - Sun., Aug. 27 / ① 10:00 am ② 10:30 am ③ 11:00 am ④ 11:30 am ⑤ 1:00 pm ⑥ 1:30 pm ⑦ 2:00 pm ⑧ 2:30 pm ⑨ 3:00 pm ⑩ 3:30 pm ⑪ 4:00 pm / Participation fee: Free (admission fee for the museum is required.)

✎ Workshops, etc.

- ◆ **Dyeing Lesson for Adults** / Fri., Sept. 8 / 1:00 pm - 3:00 pm / 18 years old and up / Participation fee: ¥1,000 (Admission fee for the museum is also required.)

✧ Applications will be accepted by phone or fax between Aug. 1 and 4. 20 people will be selected at random by a drawing of names.

🎧 Hiroshima City Cinematographic and Audio-Visual Library

(3-1 Moto-machi, Naka-ku 730-0011 / 223-3525 / 10:00am - 8:00pm (Tue.-Sat.), 10:00 am - 5:00 pm (Sun., national holidays & August 6) / Closed on Mondays (except July 17) & July 18 / **35mm Film Showings** ⇒ Adults-¥510, Seniors & High school students-¥250, Junior high school students and under-Free; **Other Film Showings** ⇒ Adults-¥380, Seniors & High school students-¥180, Junior high school students and under-Free, Admission free for foreign students (Please show your student ID or the Hiroshima International Center Complimentary Pass.) / <http://www.cf.city.hiroshima.jp/eizou/>)

🎬 July Special Showings of Masterpieces of Japanese Film: Cinémathèque of Peace 2017 (Screened in Japanese only)

✎ Admission Fee:

Adults-¥510, Seniors (65 years old and up)-¥250, People born in 1989 and later-Free

- **Fri., Jul. 7** / ① 10:30 am ② 2:00 pm ③ 6:00 pm
Sensou to seishun / 戦争と青春 (1991, Kobushi Production, Produce Center, "Sensou to seishun" Seisaku linkai, 112 min., color, 35mm film) / Director: Tadashi Imai / Cast: Yuki Kudo, Keisuke Sano, Hisashi Igawa, Tomoko Naraoka
- **Sat., Jul. 8** / ① 10:30 am ② 2:00 pm ③ 6:00 pm
Gekidou no Showa-shi Okinawa kessen / 激動の昭和史 沖縄決戦 (1971, Toho, 149 min., color, 35mm film) / Director: Kihachi Okamoto / Cast: Keiju Kobayashi, Tetsuro Tanba, Tatsuya Nakadai, Wakako Sakai
- **Sun., Jul. 9** / ① 10:30 am ② 2:00 pm
Kamiya Etsuko no seishun / 紙屋悦子の青春 (2006, BANDAI Visual, Adgear, Terebi Asahi, Wako, Pal Kikaku, 113 min., color, 35mm film) / Director: Kazuo Kuroki / Cast: Tomoyo Harada, Masatoshi Nagase, Shunsuke Matsuoka, Kaoru Kobayashi
- **Wed., Jul. 19** / ① 10:30 am ② 2:00 pm ③ 6:30 pm
Sensou to heiwa / 戦争と平和 (1947, Toho, 100 min., B&W, 35mm film) / Director: Satsuo Yamamoto, Fumio Kamei / Cast: Ryo Ikebe, Hatae Kishi, Hajime Izu, Ichiro Sugai
- **Thurs., Jul. 20** / ① 10:30 am ② 2:00 pm ③ 6:00 pm
Boku-chan no senjou / ボクちゃんの戦場 (1985, Kobushi Production, 106 min., B&W, color, 35mm film) / Director: Yutaka Osawa / Cast: Takanori Kurumagi, Yoshiyuki Omori, Daijiro Nakamura, Gin Maeda
- **Sun., Jul. 23** / ① 10:30 am ② 2:00 pm
Niju-shi no hitomi / 二十四の瞳 (1987, Shochiku, Tohoku Shinsha, Dentsu, Tokyo Hoso, 129 min., color, 35mm film) / Director: Yoshitaka Asama / Cast: Yuko Tanaka, Tetsuya Takeda, Misako Konno, Taro Kawase
- **Wed., Jul. 26** / ① 10:30 am ② 2:00 pm ③ 6:00 pm
Hadashi no Gen Part 1 / はだしのゲン 第一部 (1976, Gendai Production, 107 min., color, 35mm film) / Director: Tengu Yamada / Cast: Rentato Mikuni, Sachiko Hidari, Kenta Sato, Junji Shimada
- **Thurs., Jul. 27** / ① 10:30 am ② 2:00 pm ③ 6:00 pm
Hadashi no Gen namida no bakuhatsu / はだしのゲン 涙の爆発 (1977, Gendai Production, 123 min., color, 35mm film) / Director: Tengu Yamada / Cast: Mariko Miyagi, Kazuhide Haruta, Shoji Ishibashi, Etsuko Ichikawa
- **Fri., Jul. 28** / ① 10:30 am ② 2:00 pm ③ 6:00 pm
Hadashi no Gen Part III, Hiroshima no tatakai / はだしのゲン PART III ヒロシマのたたかい (1980, Gendai Production, 128 min., color, 35mm film) / Director: Tengu Yamada / Cast: Jun Harada, Satomi Oka, Kenichi Sakuragi, Jun Fubuki

Please feel free to contact the International Exchange Lounge at 082-247-9715.

E-mail: golounge@pcf.city.hiroshima.jp

July 2017

- **Sat., Jul. 29** / ① 10:30 am ② 2:30 pm
Hiroshima, Nagasaki ni okeru genshi bakudan no eikyou (documentary film) / 広島・長崎における原子爆弾の影響 (1946, Nihon Eigasha, 170 min., B&W, 35mm film, Japanese subtitles)

■ **Family Theater** (Screened in original language with Japanese subtitles)

👏 **Admission Fee:**

Adults-¥380, Seniors (65 years old and up)-¥180, People born in 1989 and later-Free

- **Sat., Jul. 22** / ① 10:30 am ② 2:00 pm
Sur le chemin de l'école (2012, France, 77 min., color, Digital film) / Director: Pascal Plisson

■ **Festival de Films Québécois 2017 in Hiroshima** (Screened in original language with Japanese subtitles)

- **Thurs., Jul. 13** / ① 2:00 pm ② 6:30 pm
I Killed My Mother (2009, Canada, 100 min., color, Blu-ray, Japanese subtitles) / Director: Xavier Dolan / Cast: Xavier Dolan, Anne Dorval, Suzanne Clément, François Arnaud
- **Fri., Jul. 14** / ① 2:00 pm ② 6:00 pm
Incendies (2010, Canada, France, 131 min., color, 35mm film, Japanese subtitles) / Director: Denis Villeneuve / Cast: Lubna Azabal, Mélissa Désormeaux-Poulin, Maxim Gaudette, Rémy Girard
- **Sat., Jul. 15** / ① 2:00 pm ② 6:00 pm
Monsieur Lazhar (2011, Canada, 95 min., color, 35mm film, Japanese subtitles) / Director: Philippe Falardeau / Cast: Mohamed Fellag, Sophie Nélisse, Émilien Néron, Brigitte Poupart, Danielle Proulx
- **Sun., Jul. 16** / ① 10:30 am ② 2:00 pm
Starbuck (2011, Canada, 110 min., color, Blu-ray, Japanese subtitles) / Director: Ken Scott / Cast: Patrick Huard, Antoine Bertrand, Julie LeBreton
- **Mon., Jul. 17** / ① 10:30 am ② 2:00 pm
Laurence Always (2012, Canada, France, 168 min., color, Blu-ray, Japanese subtitles) / Director: Xavier Dolan / Cast: Melvil Poupaud, Suzanne Clément, Nathalie Baye



Please feel free to contact the International Exchange Lounge at 082-247-9715.

E-mail: golounge@pcf.city.hiroshima.jp

July 2017

Library News

JULY 2017

Recommended Books for This Month

I Always Loved You:
A Story of Mary Cassatt and Edgar Degas
By Robin Oliveira (Penguin Books, 2015)

The Tenth Circle
By Jodi Picoult, Illustrations by Dustin Weaver
(Hodder, 2006)

Hector and the Search for Happiness
By François Lelord (Penguin Books, 2010)

Problem at Pollensa Bay
By Agatha Christie (Harper, 2003)

Hickory Dickory Dock
By Agatha Christie (Harper, 2002)

What other books should we add to our collection? Your suggestions are always welcome!



Library Corner

LOCATION: International Conference Center Hiroshima (ICCH), 1st Floor

T E L L : (082)247-9715

H O U R S : 9:00 am - 7:00 pm (From April 1 to September 30)
9:00 am - 6:00 pm (From October 1 to March 31)

C L O S E D : December 29th through January 3rd

BOOK LOAN POLICY:

Up to three books may be borrowed for a two-week period. To obtain an ICCH Library Card, you need to bring identification which has your address, and for foreign residents, your period of stay in Japan. (A Japanese driver's license, student identification card, passport or resident card is an acceptable form of identification.)



Please feel free to contact the International Exchange Lounge at 082-247-9715.

E-mail: golounge@pcf.city.hiroshima.jp

July 2017

Assisting with International Cooperation with Used Stamps & PET Bottle Caps

The International Exchange Lounge collects used stamps to assist international cooperation activities. Through the volunteer groups, JOCS*, the collected stamps are sold to collectors to raise money. With the profit, items such as milk and medicine are purchased and doctors as well as nurses are dispatched throughout Asia and other continents. We also collect PET bottle caps in order to support the "Ecocap Action". The sales profits obtained by recycling caps are donated to the Japan Committee "Vaccines for the World's Children" (JCV).

*JOCS: Japan Overseas Christian Medical Cooperative Service

HOW TO COLLECT:

▣ **Stamps** ⇒ When you cut stamps from envelopes, please leave 5 mm of paper around them. It is not necessary to remove them from the envelope. Torn or folded stamps cannot be accepted.

▣ **PET Bottle Caps** ⇒ Only PET bottle caps for drinks or mineral water are accepted. Please wash the caps and tear off the sticker if it has one. This is in order to avoid damaging the recycling machines. Things such as metal caps and pull-top tabs cannot be accepted.

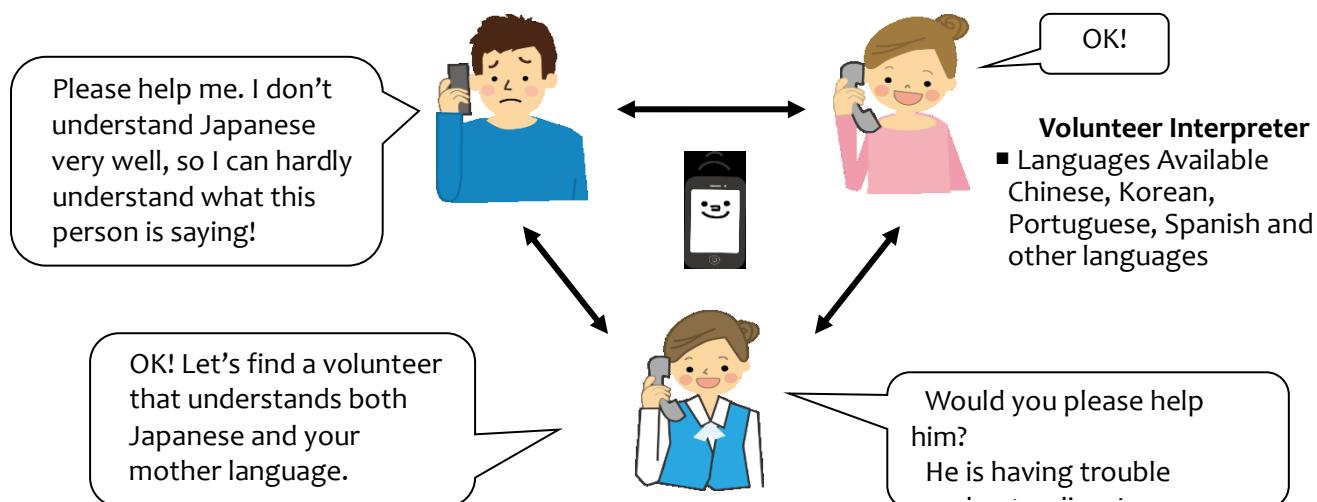
Trio-Phone Service (Multilingual Interpretation over the Telephone)



What is Trio-Phone ?

Trio-Phone Service allows three people to have a conversation at the same time through the telephone. If you are having difficulties communicating in Japanese, call the International Exchange Lounge (082-247-9715).

A volunteer interpreter will help you through the Trio-Phone Service!



For further information, please ask the staff at the International Exchange Lounge.

Please feel free to contact the International Exchange Lounge at 082-247-9715.

E-mail: golounge@pcf.city.hiroshima.jp

July 2017

Garbage Disposal Information

Separate garbage properly and take it to the collection site by 8:30am on the designated day. Please do NOT take garbage to the site on the night before. Garbage collection days vary depending on where you live and the category of the refuse. For further details, consult your local ward office or your neighbors to be sure of the proper disposal method. "Hiroshima 8", a handbook on how to separate garbage, and "Hiroshima City Garbage Disposal Guidelines for the 2017 fiscal year", a garbage chart with schedules of garbage collection days, are available at ward offices, branch offices and community halls. The Handbook and Guidelines are translated into English, Spanish, Portuguese, Chinese and Korean. These are also available at the International Exchange Lounge (International Conference Center Hiroshima), so please ask the staff if you need them.

HIRO CLUB NEWS is published monthly and provides essential and entertaining information about life in Hiroshima City. It is available in print at the International Exchange Lounge, and online at our website: <http://www.pcf.city.hiroshima.jp/ircd/english/hiroclubnews/index.html> Selected information is also available in other languages including Chinese, Portuguese and Spanish.

HIRO CLUB NEWSは広島の生活情報やイベント等の情報を掲載している英語の月刊情報誌です。国際交流ラウンジにて配布しています。当課ホームページにも掲載しています。

英語版の情報の一部を抜粋した中国語・ポルトガル語・スペイン語版も作成しています。

* * * * *

Edited and published by the Hiroshima Peace Culture Foundation

International Affairs Department, International Relations and Cooperation Division

Tel: (082) 242-8879, Fax: (082) 242-7452, E-mail: internat@pcf.city.hiroshima.jp

International Exchange Lounge

Tel: (082) 247-9715, E-mail: golounge@pcf.city.hiroshima.jp

Website: <http://www.pcf.city.hiroshima.jp/ircd/english/index.html>

編集・発行 公益財団法人広島平和文化センター国際部国際交流・協力課

〒730-0811 広島市中区中島町1番5号