



HIRO



CLUB



NEWS



For your cultural life in Hiroshima

## **0-bon** お盆

The *0-Bon* (or *Urabon-e*) festival, held for three days either in mid-July or mid-August, welcomes back the spirits of the dead for an annual visit to their homes. It is basically a Buddhist festival but it is also closely connected with Shinto ancestor worship.

On the first day, the tradition in rural areas is to light candles, torches, bonfires or lanterns at ancestors' graves and along the path to their house, so that the spirits will not get lost. These are called *mukae-bi* (=welcoming fires). Lanterns are also set up in the house (*bon-chochin*) and a special spirit altar (*shoryo-dana*) is placed in front of the family altar for small offerings of the spirits' favorite foods. Especially at the *0-Bon* following a death in the family (*hatsubon*), some families invite a priest to read sutras (*dokyo*), to hold a memorial service (*kuyo*), and join them on a visit to the family graves (*haka-mairi*).

On the final day, fires are lit again to help the spirits return to their world. These are called *okuri-bi* (=sending off fires). Simple dolls (*shoryo-uma*) are made with toothpicks or chopsticks for legs: a horse made from cucumber (=either for the spirits to ride away on or to come swiftly back to the world) and an ox made from an eggplant (=either to carry all the baggage or to return to the other slowly). In many places, a *shoryo-nagashi* (=floating spirits) ceremony is held, in which straw or paper boats (*shoryo-bune*) or lanterns (*toro-nagashi*=floating lanterns) are sent off down the river toward the sea. (Abstracted from 『ニッポン風物詩』, pp. 187-189, IBCパブリッシング).

Most Japanese companies are closed from several days around *0-Bon* as a summer vacation. Families living in cities commonly return to their home towns to participate in *0-Bon* festivities.

**August 2017**

# August 2017

- ✧ ***Community Connections***
- ✧ ***City Office Notices***
- ✧ ***Hiroshima Peace Culture Foundation News***
- ✧ ***Movie Theaters***
- ✧ ***Bilingual TV Programs***
- ✧ ***Concerts & Plays***
- ✧ ***Museums***
- ✧ ***Sports***
  - ***Hiroshima Toyo Carp Schedule 2017***
  - ***Sanfrecce Hiroshima FC Game Schedule 2017***
- ★ ***Events***
  - ***Seasonal Event Information***
  - ***Events Associated with August 6***
  - ***Municipal Facilities***
- ★ ***Lounge & Library***
  - ***Library News***
  - ***Trio-phone Service***  
***(Multilingual interpretation over the telephone)***
  - ***Assisting with International Cooperation***
  - ***Garbage Disposal***

***Hiroshima Peace Culture Foundationn  
International Exchange Lounge***

***1-5 Nakajima-cho, Naka-ku, Hiroshima 730-0811***

***E-mail: [golounge@pcf.city.hiroshima.jp](mailto:golounge@pcf.city.hiroshima.jp)***

***Tel. 082-247-9715 Fax. 082-242-7452***

○ Visit the HIRO CLUB NEWS WEBSITE for information online. ○

URL: <http://www.pcf.city.hiroshima.jp/ircd/english/hiroclubnews/index.html>



## Baseball in Hiroshima

By BENJAMIN SWALLOW July 2017

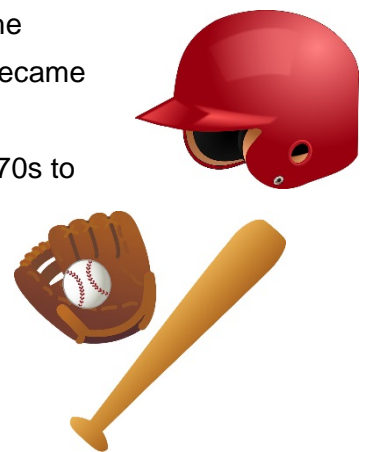
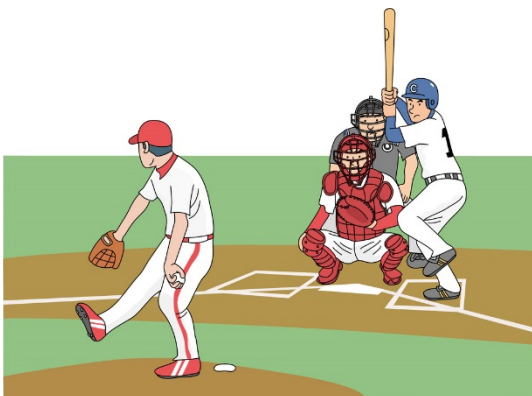
Baseball in Japan is without a doubt one of the most popular sports in Japan, and nowhere more so than in Hiroshima with the Hiroshima Toyo Carp team, known locally simply as the “Carp”. Fans of the Carps are definitely some of the most enthusiastic supporters in Japanese baseball and after last year’s historic Central League victory, the first in 25 years, many hope that they can repeat the trick this year, maybe even winning the coveted Japan Series championship, denied them last year by the Hokkaido Nippon-Ham Fighters.

The Hiroshima Toyo Carps were originally founded as the Hiroshima Carps in 1949 to serve as a symbol of reconstruction in the aftermath of the Pacific War and the Atomic Bombing of Hiroshima. The team was sponsored by the company Toyo Kogyo (now Mazda) in 1968 and hence they became the Hiroshima Toyo Carps. The team won their first league championship in 1975, beginning a golden age from the late ‘70s to the early ‘90s.

The Carps played in the Hiroshima Municipal Stadium from 1957 to 2008 until they moved to their present ground, the Mazda Zoom-Zoom Stadium Hiroshima

There are many different types of tickets to Carp games, with lots of different places to sit, but the main ones

are tickets you can buy on the day and designated seats bought in advance. If you have confidence in your Japanese then you can register and buy online on the site but, if not, you can easily buy tickets both at the stadium, and at convenience stores. Unfortunately, this season’s tickets are all sold out, but you can still enjoy it on TV at home or at Izakayas!



# City Office Notices

City Office Notices contains selected information from the Hiroshima City Newsletter, *ひろしま市民と市政 Hiroshima Shimin to Shisei*. City Office Notices is published twice a month and available in print at the International Exchange Lounge, and online at our website:  
<http://www.pcf.city.hiroshima.jp/ircd/english/hiroclubnews/index.html>

August 1, 2017

## Topics

- 🦋 Peace Memorial Ceremony on August 6
- 🦋 Please offer a silent prayer at the time when atomic bombs were dropped on Hiroshima and Nagasaki
- 🦋 Traffic Regulations for the Peace Ceremony
- 🦋 Garbage Collection on Friday, August 11
- 🦋 Municipal Housing Available
- 🦋 Reduction/Exemption of Water and Sewerage Rates

## Peace Memorial Ceremony on August 6

平和記念式典にご参列を(P1)

**DATE & TIME:** Sunday, August 6 8:00 am – 8:45 am (The venue will open at 6:30 am.)

**PLACE:** Peace Memorial Park

**INQUIRIES:** *Shimin Katsudo Suishin Ka* (Citizens' Activities Promotion Division)

Tel. 504-2103 Fax. 504-2066

- Other various events associated with August 6 will also be held around Hiroshima on this day. Please refer to *Events Associated with August 6*.
- You will be able to watch a live report of this year's Peace Memorial Ceremony at the *Kokusai Kaigijo* (International Conference Center Hiroshima).

## Please offer a silent prayer at the time when atomic bombs were dropped on Hiroshima and Nagasaki

原爆投下時刻に黙とうを(P1)

Please observe a moment of silence at 8:15 am on Sunday, August 6 for Hiroshima and at 11:02 am on Wednesday, August 9 for Nagasaki. Please offer one minute of silent prayer for the atomic bomb victims, and for lasting world peace.

## Traffic Regulations for the Peace Ceremony

式典に伴う交通規制があります(P1)

Traffic controls will be enforced during the ceremony on August 6. Please follow any route changes. Buses mentioned below will be diverted between 6:30 am and 9:30 am.

- ☞ Hiroshima Bus lines going to Yoshijima will go to Route 2 via City Hall (*Shiyakusho-mae*).

Edited and published by the Hiroshima Peace Culture Foundation  
 International Affairs Department, International Relations and Cooperation Division  
 Tel: (082) 242-8879, Fax: (082) 242-7452, E-mail: [internat@pcf.city.hiroshima.jp](mailto:internat@pcf.city.hiroshima.jp)  
 International Exchange Lounge  
 Tel: (082) 247-9715, E-mail: [golounge@pcf.city.hiroshima.jp](mailto:golounge@pcf.city.hiroshima.jp)  
 Website: <http://www.pcf.city.hiroshima.jp/ircd/english/index.html>  
 編集・発行 公益財団法人広島平和文化センター国際部国際交流・協力課

- ☞ Hiroshima Bus lines going to Kusatsu via Peace Boulevard (*Heiwa Odori*) will go to Peace Boulevard from Kamiya-cho through Tokaichi.
- ☞ For Chugoku JR Bus company's Sightseeing Loop Bus "*Meipuru ~ pu*", the first buses departing at 9:00 am, 9:15 am and 9:30 am from Hiroshima Station (Shinkansenguchi exit) will go to Hatchobori through Tokaichi and Tera-machi.

**INQUIRIES:** Peace Memorial Ceremony Traffic Control Tel. 504-2714 Fax. 504-2712

## Garbage Collection on Friday, August 11

8月11日(祝・金)の家庭ごみの収集(P4)

Household waste will be collected as scheduled.

**INQUIRIES:** *Gyomu Daiichi Ka* (Operation Division I) Tel. 504-2220 Fax. 504-2229

## Municipal Housing Available

市営住宅入居者募集(P5)

Qualification guidelines and the list of municipal houses are available at the *Kenchiku Ka* (Building Division) of your local ward office, branch office or at the Citizens Service Corner. Please apply at one of the following divisions or Prefectural Associations of Building Maintenance (*Hiroshimaken Biru-mentenansu Kyodo Kumiai*) between Tuesday, August 8 and Thursday, August 10.

**INQUIRIES:** *Kenchiku Ka* (Building Division), Ward Office

Ward Office	Telephone	Fax	Ward Office	Telephone	Fax
Naka	504-2578	541-3835	Asaminami	831-4954	877-2299
Higashi	568-7744	262-6986	Asakita	819-3937	815-3906
Minami	250-8959	252-7179	Aki	821-4928	822-8069
Nishi	532-0949	232-9783	Saeki	943-9744	923-5098

## Reduction/Exemption of Water and Sewerage Rates

水道料金、下水道使用料の減免制度があります(P5)

### ELIGIBILITY:

- ① Households receiving public welfare payments (*Seikatsuhogo*)
- ② Households with a family member receiving benefits for Japanese returnees from China
- ③ Households with a family member who falls within one of the following types of disabilities:
  - I. Holders of
    - Physical Disability Certificate (*Shintai Shougaisha Techo*) levels 1–3,
    - a Medical Rehabilitation Certificate (*Ryouiku Techo*) ①/ A / ②
    - a Mental Disability Public Health and Welfare Certificate (*Seishin Shougaisha Hoken Fukushi Techo*) levels 1 or 2.
  - II. Those who receive
    - Special Child Dependent's Allowance (*Tokubetsu Jido Fuyo Teate*),
    - Basic Pension for the Disabled (*Shougai Kiso Nenkin*) or
    - Pension for the Disabled (*Shougai Nenkin*) levels 1 or 2.

Edited and published by the Hiroshima Peace Culture Foundation  
 International Affairs Department, International Relations and Cooperation Division  
 Tel: (082) 242-8879, Fax: (082) 242-7452, E-mail: [internat@pcf.city.hiroshima.jp](mailto:internat@pcf.city.hiroshima.jp)  
 International Exchange Lounge  
 Tel: (082) 247-9715, E-mail: [golounge@pcf.city.hiroshima.jp](mailto:golounge@pcf.city.hiroshima.jp)  
 Website: <http://www.pcf.city.hiroshima.jp/ircd/english/index.html>  
 編集・発行 公益財団法人広島平和文化センター国際部国際交流・協力課

- ④ Households with a family member who is 65 or older and approved for nursing care (levels 4 or 5) by their nursing care insurance (*Kaigo Hoken*)
- ⑤ Single-parent families
- ⑥ Some social welfare facilities in the private sector

If you or your family member fall under ③ or ④, but are currently hospitalized or institutionalized, you may not be eligible. There is also an income limitation for those who fall within ③, ④ or ⑤. For details, please inquire at your local water station (see the table below).

**DEDUCTION RATE:** 0 – 10 cubic meters will be discounted from your monthly water usage bill.

**APPLICATION:** Bring documents that prove your eligibility along with your personal seal (*inkan*) to your local Water Works Service Station (*Suido Kyoku Eigyo Sho*) or Public Welfare Department (*Kosei Bu*) of your local ward office.

**INQUIRIES:** Water Works Service Stations

Ward	Telephone	Fax	Ward	Telephone	Fax
Naka	221-5522	511-6925	Asaminami	831-4565	877-0679
Higashi	511-6922	511-6925	Asakita	819-3958	814-8859
Minami	511-6933	221-3060	Aki	821-4949	823-6624
Nishi	511-6944	221-3060	Saeki	923-4121	922-6985

# Hiroshima Peace Culture Foundation News

Event schedules are subject to change. Please contact event organizers to confirm listed information.

August 2017

## CIR Question & Answer Day

Are you looking for advice about Hiroshima?

Come in for a chat with our new C.I.R. (Coordinator for International Relations)!

**DATE & TIME:** Wednesday, August 23 1:30pm – 3:30pm

**PLACE:** International Exchange Lounge

(International Conference Center Hiroshima 1F, 1-5 Nakjima-cho, Naka-ku)

**RESERVATIONS ARE REQUIRED:** Reservations can be made in person or by telephone at the International Exchange Lounge TEL. 247-9715 (Lounge open hours 9:00am – 7:00pm)

**INQUIRIES:** International Exchange Lounge, International Relations and Cooperation Division, Hiroshima Peace Culture Foundation TEL. 247-9715

## Special Exhibition: "Memoirs of the Atomic Bombing: The Earliest Accounts of the Hiroshima A-bomb Part 2"

**PERIOD:** Sunday, January 1 – Friday, December 29, 2017

**PLACE:** Hiroshima National Peace Memorial Hall for the Atomic Bomb Victims, B1

**ADMISSION:** Free

**INQUIRIES:** Hiroshima National Peace Memorial Hall for the Atomic Bomb Victims  
Tel. 543-6271 Fax. 543-6273

## The Main Building Is Currently Closed for Renovations

The East Building was reopened on Wednesday, April 26, along with the completion of its renovation process. The Main Building is currently closed for renovations and reorganization of the permanent exhibits. The comprehensive renovation process of the Hiroshima Peace Memorial Museum is to be completed in July 2018.

**INQUIRIES:** Curatorial Division, Peace Memorial Museum Tel. 241-4004

Website: <http://hpmmuseum.jp/?lang=eng>

Edited and published by the Hiroshima Peace Culture Foundation  
International Affairs Department, International Relations and Cooperation Division  
Tel: (082) 242-8879, Fax: (082) 242-7452, E-mail: [internat@pcf.city.hiroshima.jp](mailto:internat@pcf.city.hiroshima.jp)  
International Exchange Lounge  
Tel: (082) 247-9715, E-mail: [golounge@pcf.city.hiroshima.jp](mailto:golounge@pcf.city.hiroshima.jp)  
Website: <http://www.pcf.city.hiroshima.jp/ircd/english/index.html>  
編集・発行 公益財団法人広島平和文化センター国際部国際交流・協力課

# Movie Theaters August 2017



Here is a general list of movies being shown in theaters around Hiroshima. Due to unpredictable changes in scheduling, listings are subject to change without notice. Foreign films are usually in their original language with Japanese subtitles. When not specified, the admission is **¥1,800** for adults. Theaters offer various kinds of admission discount services, so please inquire at each theater for more information.

## SALON CINEMA

[Hiroshima Toei Plaza Bldg. 8F, 16-10 Hatchobori, Naka-ku / Tel: 082-962-7772 / URL: <http://www.johakyu.co.jp/>]

Until Aug. 11 **The Light Between Oceans** / '16 USA, Australia, New Zealand  
 Until Aug. 11 **The Handmaiden** / '16 Korea  
 From Aug. 5 **La Pazza Gioia / Like Crazy** / '16 Italy, France

## HATCHOZA

[Fukuya Department Store Hatchobori 8F, 6-26 Ebisu-cho, Naka-ku / Tel: 082-546-1158 / URL: <http://www.johakyu.co.jp/>]

Until Aug. 11 **Forushande / The Salesman** / '16 Iran, France

## The 4<sup>th</sup> Hiroshima-Iran Love and Peace Film Festival at Hatchoza

○ Check the website for more information.  
 URL: <http://www.a-sia.com/hilpff/>

PERIOD: August 5 – 11

TIME: 7:00 pm

TICKETS: Advance - ¥1,200

At the door - ¥1,500

○ This film festival will also be held at the Hiroshima Prefectural Art Museum from Aug. 5 to Aug. 8 (time: 1:00 pm, 3:00 pm & 5:00 pm).

## YOKOGAWA CINEMA Tel : 231-1001

[3-1-12 Yokogawa-cho, Nishi-ku / Tel: 082-231-1001 / URL: <http://yokogawa-cine.jugem.jp/>]

Aug. 15 – 30 **Cialo / Body** / '15 Poland  
 (except Aug. 25 & 28)

Aug. 1 – 14 **河 / River** / '15 China

Aug. 8 – 21 **Toto si Surorile Lui / Toto and His Sisters** / '14 Romania

From Aug. 15 **Manchester by the Sea** / '16 USA  
 (except Aug. 27 & 31)

Aug. 22 – 30 **Rupture** / '16 USA  
 (except Aug. 25 & 28)

## AEON CINEMA HIROSHIMA

[Hiroshima Danbara Shopping Center 6F, 1-3-52 Danbara-minami, Minami-ku / Tel : 082-261-3770 / URL: <http://www.aeoncinema.com/cinema/hiroshima/>]

From Jul. 1 **Pirates of the Caribbean: Dead Men Tell No Tales** / '17 USA

From Jul. 28 **The Mummy** / '17 USA

From Aug. 4 **Transformers: The Last Knight** / '17 USA

From Aug. 11 **Spider-Man: Homecoming** / '17 USA

From Aug. 25 **Wonder Woman** / '17 USA

From Sept. 9 **Dunkirk** / '17 UK, USA, France

From Sept. 15 **Alien: Covenant** / '17 USA

From Sept. 16 – 28 **Toni Erdmann** / '16 Germany, Austria

From Sept. 29 **A Dog's Purpose** / '16 USA

## 109 CINEMAS

[Alpark 3F (north bldg.), 4-7-1 Kusatsu-minami, Nishi-ku / Tel: 05700-002-109 / URL: <http://www.109cinemas.net/Hiroshima>]

From Jul. 1 **Pirates of the Caribbean: Dead Men Tell No Tales** / '17 USA

From Jul. 15 **Power Rangers** / '17 USA, Canada

From Jul. 28 **The Mummy** / '17 USA

From Aug. 4 **Transformers: The Last Knight** / '17 USA

From Aug. 11 **Spider-Man: Homecoming** / '17 USA

From Aug. 25 **Wonder Woman** / '17 USA

From Sept. 1 **Skip Trace / 絶地逃亡** / '16 USA, China, Hong Kong

From Sept. 1 **Train to Busan** / '16 Korea



Please feel free to contact the International Exchange Lounge at 082-247-9715.

E-mail: [golounge@pcf.city.hiroshima.jp](mailto:golounge@pcf.city.hiroshima.jp)

August 2017



**TOHO CINEMAS MIDORII**

[Fuji Grand 3F, 1-5-2 Midorii, Asaminami-ku / Tel : 082-831-8060 / URL: <http://www.tohotheater.jp/>]  
 Adults-¥1,800, University students-¥1,500, From preschoolers (3 years old and under) to High school students-¥1,000,

- From Jul. 1 **Pirates of the Caribbean:  
Dead Men Tell No Tales /**  
'17 USA
- From Jul. 28 **The Mummy /** '17 USA
- From Aug. 4 **Transformers: The Last Knight**  
/ '17 USA
- From Aug. 11 **Spider-Man: Homecoming**  
/ '17 USA
- From Aug. 25 **Wonder Woman /** '17 USA
- From Sept. 1 **Skip Trace / 絶地逃亡 /**  
'16 USA, China, Hong Kong

**HIROSHIMA WALD 11**

[AEON Mall Hiroshima Fuchu 4F, 2-1-1 Osu, Fuchu-cho, Aki-gun / Tel : 082-561-0600 / URL: <http://kinezo.jp/pc/wald11>]

- From Jul. 1 **Pirates of the Caribbean:  
Dead Men Tell No Tales /**  
'17 USA
- From Jul. 7 **John Wick: Chapter 2 /**  
'17 USA
- From Jul. 28 **The Mummy /** '17 USA
- From Aug. 4 **Transformers: The Last Knight**  
/ '17 USA
- From Aug. 11 **Spider-Man: Homecoming**  
/ '17 USA
- From Aug. 19 **Baby Driver /** '17 USA
- From Aug. 25 **Wonder Woman /** '17 USA
- From Sept. 1 **The Wall /** '17 USA
- From Sept. 1 **Skip Trace / 絶地逃亡 /**  
'16 USA, China, Hong Kong
- From Sept. 9 **Dunkirk /** '17 UK, USA,  
France
- From Sept. 15 **Alien: Covenant /** '17 USA
- From Sept. 29 **A Dog's Purpose /** '16 USA

***Movie Showings at 10 am in the Morning***

- Aug. 5 – 11 **Roman Holiday /** '53 USA
- Aug. 12 – 18 **Sabrina /** '54 USA
- Aug. 19 - 25 **Love in the Afternoon /**  
'57 USA
- Aug. 26 – Sept. 8 **How to Steal a Million /**  
'66 USA
- Sept. 9 – 22 **Doro no kawa /** '81 Japan
- Sept. 23 – Oct. 6 **L'argent de Poche /**  
'76 France
- Oct. 7 – 20 **Norainu /** '49 Japan
- Oct. 21 – Nov. 3 **Tengoku to jigoku /**  
'63 Japan
- Nov. 4 – 17 **Gloria /** '80 USA

- Nov. 18 – Dec. 1 **Les Diaboliques /**  
'55 France
- Dec. 2 – 15 **Merry Christmas, Mr.  
Laurence /** '83 Japan, UK
- Dec. 16 – 29 **Yasha /** '85 Japan
- Dec. 30 – Jan. 12 **Paper Moon /** '73 USA

**T-JOY HIGASHI HIROSHIMA**

[Fuji Grand Higashi Hiroshima 3F, 4405 Misonou, Saijo-cho, Higashi Hiroshima-shi / Tel : 082-493-6779 / URL: [http://kinezo.jp/pc/t-joy\\_hiroshima](http://kinezo.jp/pc/t-joy_hiroshima)]

- From Jul. 1 **Pirates of the Caribbean:  
Dead Men Tell No Tales /**  
'17 USA
- From Aug. 4 **Transformers: The Last Knight**  
/ '17 USA
- From Aug. 11 **Spider-Man: Homecoming**  
/ '17 USA
- From Aug. 25 **Wonder Woman /** '17 USA
- From Sept. 9 **Dunkirk /** '17 UK, USA,  
France
- From Sept. 15 **Alien: Covenant /** '17 USA



Please feel free to contact the International Exchange Lounge at 082-247-9715.

E-mail: [golounge@pcf.city.hiroshima.jp](mailto:golounge@pcf.city.hiroshima.jp)

August 2017



# Bilingual TV Programs

August 2017

#1: NHK Sogo	#4: Hiroshima TV
#2: NHK E Tele	#5: Home TV
#3: RCC	#8: TSS

<sup>2</sup> Some changes may occur because of special programming.

## NEWS

### Monday - Sunday

NHK News 7 / 7:00 pm – 7:30 pm (#1)

### Monday - Friday

News Watch 9 / 9:00 pm – 10:00 pm (#1)

## REGULAR PROGRAMS

### Thursday

Through the Wormhole / 10:00 pm – 10:45 pm (#2) <sup>2</sup> Broadcasted on Aug. 3 & 10

Documentary Programs / 10:00 pm – 10:45 pm (#2) <sup>2</sup> Broadcasted on Aug. 17 & 24

TED / 11:00 pm – 11:25 pm (#2)

<sup>2</sup> Rerun: Sat., 1:25 am – 1:52 am

### Saturday

Dramatic Earth (Documentary Program) /

7:00 pm – 7:45 pm (#2)

<sup>2</sup> Rerun: Mon., midnight – 12:45 am

## DRAMAS

### Monday

Hawaii Five-O Season 1 ('10 USA) / 1:25 am – 2:20 am (#4) <sup>2</sup> Except the 7<sup>th</sup>

### Wednesday

Game Shakers ('15 USA) / 7:25 pm – 7:50 pm (#2)

### Saturday

The Thundermans ('13 USA) / 6:25 pm – 6:50 pm (#2)

### Sunday

Victoria ('16 UK) / 11:00 pm – 11:50 pm (#1)

## ANIMATIONS

### Saturday

Curious George / 8:35 am – 9:00 am (#2)  
<sup>2</sup> the 5<sup>th</sup>: 8:35 am – 9:30 am

SpongeBob SquarePants / 6:00 pm – 6:25 pm (#2) <sup>2</sup> Except the 12<sup>th</sup>

### Sunday

Thomas & Friends / 5:30 pm – 5:50 pm (#2)  
<sup>2</sup> the 11<sup>th</sup>: 9:00 am – 9:30 am

## MOVIES

4<sup>th</sup> Jurassic World / '15 USA / 9:00 pm – 11:24 pm (#4)

6<sup>th</sup> Carrie / '13 USA / 1:50 am – 3:45 am (#8)

19<sup>th</sup> Still Life / '13 UK, Italy / 12:45 am – 2:45 am (#3)

20<sup>th</sup> Kung Fu Hustle / '04 China, USA / 2:08 am – 4:00 am (#3)

## SPECIAL PROGRAMS

### Japangle

16<sup>th</sup>, 17<sup>th</sup> & 18<sup>th</sup> 9:30 am – 9:50 am (#2)

### The 72<sup>nd</sup> Hiroshima Peace Memorial Ceremony

6<sup>th</sup> 8:00 am – 8:35 am (#1)

### The 72<sup>nd</sup> Nagasaki Peace Memorial Ceremony

9<sup>th</sup> 10:30 am – 11:50 am (#1)

## SPORTS

### © Golf

#### j RICOH Women's British Open 2017 Kingsbarns

Golf Links (#5) <sup>2</sup> Broadcasted in Japanese only

4<sup>th</sup> 12:15 am – 1:56 am

5<sup>th</sup> 12:20 am – 1:50 am

5<sup>th</sup> 11:05 pm – 3:00 am

6<sup>th</sup> 11:10 pm – 3:00 am

#### j U.S. PGA Championship (#8)

<sup>2</sup> Broadcasted in Japanese only

13<sup>th</sup> 3:45 am – 7:30 am

14<sup>th</sup> 3:05 am – 8:00 am

### © Athletics

#### j IAAF World Championships London 2017 (#3)

August 4 – 13 <sup>2</sup> Broadcasted in Japanese only

<sup>2</sup> Official Website: <https://www.iaaf.org/competitions/iaaf-world-championships>

4<sup>th</sup> 11:30 pm – 6:15 am

5<sup>th</sup> 9:00 pm – 6:45 am

6<sup>th</sup> 6:00 pm – 7:00 am

7<sup>th</sup> 11:00 pm – 7:00 am

8<sup>th</sup> 11:00 pm – 7:00 am

9<sup>th</sup> 11:00 pm – 7:00 am

10<sup>th</sup> 11:00 pm – 7:00 am

11<sup>th</sup> 11:30 pm – 6:15 am

12<sup>th</sup> 5:00 pm – 8:54 pm, 11:30 pm – 6:45 am

13<sup>th</sup> 3:00 pm – 7:56 pm, 10:10 pm – 7:00 am



Please feel free to contact to the International Exchange Lounge at 082-247-9715.

E-Mail: [golounge@pcf.city.hiroshima.jp](mailto:golounge@pcf.city.hiroshima.jp)

August 2017

© **Boxing**

i **WBC Bantam Weight Title Match: Shinsuke Yamanaka (JP) x Luis Nery (MX) (#4)**

<sup>2</sup> Broadcasted in Japanese only  
15<sup>th</sup> 7:56 pm – 8:54 pm

© **Judo**

i **World Championships Budapest (#8)**

<sup>2</sup> Broadcasted in Japanese only  
29<sup>th</sup> – 31<sup>st</sup> 12:25 am – 1:40 am  
Sept. 1 12:25 am – 1:25 am

© **Football**

i **2018 FIFA World Cup Russia: Asian Qualifiers – Road to Russia (#5)**

<sup>2</sup> Broadcasted in Japanese only  
31<sup>st</sup> **Japan x Australia** / 7:00 pm – 9:54 pm



Please feel free to contact to the International Exchange Lounge at 082-247-9715.

E-Mail: [golounge@pcf.city.hiroshima.jp](mailto:golounge@pcf.city.hiroshima.jp)

August 2017

# Concerts & Plays



## Ticket Offices

- j EDION Play Guide (SUNMALL, 1F) (Kamiya-cho, Naka-ku; Tel. 247-5111)
- k YAMAHA Music (Kamiya-cho, Naka-ku; Tel. 244-3779 Closed on the 1<sup>st</sup> & the 3<sup>rd</sup> Wednesdays)
- l Hiroshima Yume Plaza (Hondori, Naka-ku; Tel. 544-1122 Closed on Wednesdays)
- m Kawai Hiroshima (2-2-6 Kamiya-cho, Naka-ku; Tel. 243-9291 Closed on Mondays)
- n Fukuya Department Store, Hatchobori (7F) (Ebisu-cho, Naka-ku; Tel. 246-6111)
- o Fukuya Department Store, Hiroshima Station (7F) (Matsubara-cho, Minami-ku; Tel. 568-3111)
- p Alpark Tenmaya (3F) (Inokuchi-myojin, Nishi-ku; Tel. 501-1111)
- q Hiroshima Arts Gakki (Hatchobori, Naka-ku; Tel. 227-6601)

Date / Starting Time (Opening Time) / Venue / Ticket Price / Tickets Go on Sale Date / Ticket Offices / Inquiries

♪ Event schedules are subject to change.

Please contact the event office before you go. ♪

## August

### € Belle Quatuor

NEW!

5<sup>th</sup> Sat. / • 1:30 pm (1:00 pm) , 4:30 pm (4:00 pm) / Gewand Halle / Advance: Junior high school students and up-¥1,500 4 years old to elementary school 6<sup>th</sup> grade-¥500; At the door: Junior high school students and up-¥1,700 4 years old to elementary school 6<sup>th</sup> grade-¥600 <sup>2</sup> Children younger than 4 years old-Free / Now on sale / • † / Belle Quatuor 080-3882-9820

- Belle Quatuor is a string quartet.

### € Hiroshima Symphony Orchestra: An Evening of Peace Concert stage 1

(R. Strauss: *Tod und Verklärung Op. 24*; Brahms: *Piano Concerto No. 1 in D minor Op. 15*)

5<sup>th</sup> Sat. / 3:00 pm (2:00 pm) / Hiroshima Bunka Gakuen HBG Hall / S-¥5,000 A-¥4,000 Students-¥2,000 (Student tickets are only sold at the Hiroshima Symphony Orchestra Office.) / Now on sale / j , n o † ^ , Lawson, Ticket PIA, Chugoku Shimbun & Hiroshima Symphony Orchestra Office / Hiroshima Symphony Orchestra Office 082-532-3080 E-mail: info@hirokyo.or.jp

- Conductor: Tatsuya Shimono / Piano: Peter Serkin

### € The 14<sup>th</sup> Spiritual Concert for A-bomb Victims: Requiem (G. Faure)

NEW!

6<sup>th</sup> Sun. / 6:00 pm – 7:45 pm / Hiroshima Memorial Cathedral for World Peace / Free admission / 082-221-8420 (Masuda)

### € Summer Concert in Hiroshima

NEW!

8<sup>th</sup> Tue. / Part 1: 1:00 pm Part 2: 4:45 pm / Hiroshima Kenmin Bunka Center / ¥800 for each part / Now on sale / , , „ / Hiroshima Summer Concert 0829-39-6902

### € The 2<sup>nd</sup> Aroma (string ensemble) Concert

NEW!

10<sup>th</sup> Thurs. / 6:30 pm (6:00 pm) / JMS Aster Plaza / Adults-¥3,000 Students-¥1,500 / Please ask the concert organizer for ticket information. / 090-1019-5140 (Hasegawa)

### € Baroque Joint Concert: Hiroshima Bach Soloists x Hiroya Aoki (countertenor) x Ensemble Germes

NEW!

11<sup>th</sup> Fri. / 2:30 pm (2:00 pm) / Hiroshima Nagarekawa Church / Advance: Adults-¥2,500 Students-¥1,500; At the door: Adults-¥3,000 Students-¥2,000 / Now on sale / • „ / 090-1355-9625 (Kato); tajitaji\_1226@yahoo.co.jp (Tajiri)

### € Requiem in Hiroshima vol. 17

11<sup>th</sup> Fri. / 4:30 pm (4:00 pm) / Nishi Kumin Bunka Center / Advance: Adults-¥2,500 Students-¥1,500; At the door: Adults-¥2,800 Students-¥1,800 / Now on sale / • / 090-1014-8498 (Kobayashi)

### € Erth's Dinosaur Zoo

15<sup>th</sup> Tue. / • 1:00 pm – 2:00 pm (12:30 pm) , 3:30 pm – 4:30 pm (3:00 pm) / Hiroshima Bunka Gakuen HBG Hall / ¥3,000 / Now on sale / Lawson, Ticket PIA, e+, • † / Candy Promotion Hiroshima 082-249-8334

Please feel free to contact the International Exchange Lounge at 082-247-9715.

E-mail: golounge@pcf.city.hiroshima.jp

August 2017

### € Legare Concert vol. 3

16<sup>th</sup> Wed. / 2:30 pm (2:00 pm) / Hatsukaichi Bunka Hall Sakurapia / Advance: Adults-¥2,000 Students-¥1,000; At the door: Adults-¥2,500 Students-¥1,500 / Please ask the concert organizer for ticket information. / 090-9413-7959 (Ukena)  
 - This is a flute, piano & soprano concert.

### € The 29<sup>th</sup> Affinis Music Festival 2017 Hiroshima (Aug. 19 – 27)

#### SCHEDULE:

- μ **Chamber Music Concerts** / 22<sup>nd</sup> Tue. – 24<sup>th</sup> Thurs. / 7:00 pm (6:30 pm) / JMS Aster Plaza
- μ **The 29<sup>th</sup> Affinis Music Festival Orchestra Grand Concert** / 27<sup>th</sup> Sun. / 3:00 pm (2:00 pm) / JMS Aster Plaza
  - Ÿ Haydn: Symphony Hob. I – 100 in G major “Military”  
Concertmaster: Henrik Hochschild
  - Ÿ Brahms: Symphony No. 2 in D major Op. 73  
Conductor: Kazuyoshi Akiyama
- μ **Promenade Concerts** / 22<sup>nd</sup> Tue. – 24<sup>th</sup> Thurs. / 5:30 pm / JMS Aster Plaza
- μ **Seminars** / 19<sup>th</sup> Sat. – 23<sup>rd</sup> Wed. & 25<sup>th</sup> Fri. / JMS Aster Plaza
  - Some seminars are not open to public.
- μ **Cultural Programs for Citizens**
  - <sup>2</sup> Free admission program
  - <sup>a</sup> **Lunchtime Concerts** / 19<sup>th</sup> Sat. – 22<sup>nd</sup> Tue. / 12:30 pm / JMS Aster Plaza
  - <sup>a</sup> **Mini Concerts** / ☐ 20<sup>th</sup> Sun. • 21<sup>st</sup> Mon. / 7:00 pm / ☐ the 20<sup>th</sup>: Lobby, RIHGA Royal Hotel Hiroshima • the 21<sup>st</sup>: Formerly the Bank of Japan Hiroshima Branch
  - <sup>a</sup> **AIUE Orchestra** / 26<sup>th</sup> Sat. / 3:00 pm / JMS Aster Plaza
    - ∫ This is an orchestra concert for elementary school students. Although admission is free, numbered ticket will be required. Applications for the numbered tickets will be accepted from Jul. 1 to Jul. 31.
  - <sup>a</sup> **AIUE Music Lesson** / 26<sup>th</sup> Sat. / 1:30 pm / JMS Aster Plaza
    - ∫ Participants will be selected from the participants of AIUE Orchestra.
  - <sup>a</sup> **Minna de Orchesra!** / 24<sup>th</sup> Thurs. / 4:00 pm / JMS Aster Plaza
    - ∫ This is a participatory orchestra to commemorate the finale of the festival in Hiroshima. Please check the website for more information.

#### TICKETS:

- ∨ **Seminar:**
  - One day pass-¥500 All program pass-¥1,000
  - ∫ You can attend seminars with concert tickets.
- ∨ **Chamber Music Concert:**
  - Adults-¥2,500 Students-¥1,000

<sup>2</sup> All non-reserved seats

<sup>2</sup> Student tickets are only sold at JMS Aster Plaza and Kumin Bunka Centers and the Hiroshima Symphony Orchestra Office.

#### ∨ **Grand Concert:**

S-¥5,200 A-¥4,200 B-¥3,200  
Students-¥1,500

<sup>2</sup> B seat tickets are not sold at JMS Aster Plaza and Kumin Bunka Centers

<sup>2</sup> Student tickets are only sold at the Hiroshima Symphony Orchestra office.

**TICKET SALE DATE:** Now on sale

**TICKET OFFICES:** j , ... † ‡, JMS Aster Plaza, Kumin Bunka Centers, Hiroshima Symphony Orchestra Office & Chugoku Shimbun

#### INQUIRIES:

∨ About the Music Festival:

##### **Affinis Arts Foundation**

03-5797-7135 E-mail: info@affinis.or.jp

HP: http://www.affinis.or.jp/

∨ About the Cultural Programs

##### **Hiroshima City Bunka Zaidan**

082-244-0750

E-mail: bunka@cf.city.hiroshima.jp

HP: http://affinis-hiroshima.com/

∨ About the Grand Concert:

##### **Hiroshima Symphony Orchestra Office**

082-532-3080 E-mail: info@hirokyo.or.jp

HP: http://hirokyo.or.jp/

**NEW!!**

### € Saaya Kimura Violin Recital

20<sup>th</sup> Sun. / 2:00 pm (1:30 pm) / lifeone221 Hall / Advance-¥2,000 At the door-¥2,500 / Please ask the concert organizer for ticket information. / lifeone music 082-922-0028 E-mail: lifeone@cyber.ocn.ne.jp

**NEW!!**

### € The 3<sup>rd</sup> “A Grain of Mustard Seed” Chamber Music Concert

24<sup>th</sup> Thurs. / 6:00 pm (5:30 pm) / Nishi Kumin Bunka Center / Free admission / Executive Committee 090-7778-2427 (Nagahara); 082-941-0797 (Harada)

**NEW!!**

### € Gaku Yamada & Yasuo Fujii Guitar Joint Concert: Spanish & Latin-American Guitar Music

24<sup>th</sup> Thurs. / 6:45 pm (6:15 pm) / Higashi Kumin Bunka Center / Advance: Adults-¥2,500 Students-¥2,000; At the door: Adults-¥3,000 Students-¥2,500 / Now on sale / • / Fujii Music School 090-2008-4738 E-mail: yfguitar2@gmail.com

### € “PO” Fusion Concert

28<sup>th</sup> Mon. / 7:30 pm (7:00 pm) / Live Juke / Advance: Adults-¥3,500 Students-¥2,000; At the door: Adults-¥4,000 Students-¥2,500 / Ticket

Please feel free to contact the International Exchange Lounge at 082-247-9715.

E-mail: golounge@pcf.city.hiroshima.jp

August 2017

reservations & Inquiries: "PO" Executive  
Committee 090-8717-7639 (Uchida), E-mail:  
quintettheburoly@yahoo.co.jp  
Special guest: Akira Onozuka, a keyboardist.

### € Adrien Moignard Japan Tour in Hiroshima 2017

30<sup>th</sup> Wed. / 7:30 pm (7:15 pm) / Live Juke /  
Advance-¥5,000 At the door-¥5,500 / Now on  
sale / Ticket reservation  
(online): [http://manouche.hy-creative.com/adrien-  
moignard](http://manouche.hy-creative.com/adrien-moignard) / Live Juke 082-249-1930  
This is a jazz concert

### € Ventures Japan Tour 2017

31<sup>st</sup> Thurs. / 6:30 pm (6:00 pm) / JMS Aster Plaza /  
¥6,000 / Now on sale / • †, Lawson, Ticket PIA,  
e+ / Candy Promotion Hiroshima 082-249-8334

## September

### € Kojima Musica Collegia: The 27<sup>th</sup> Regular Concert

1<sup>st</sup> Fri. / 6:00 pm (5:00 pm) / JMS Aster Plaza /  
Advance: Adults-¥2,500 Students-¥1,500  
Family pair tickets-¥3,500 Reserved seats-¥3,500;  
At the door: Adults-¥2,800 Students-¥1,700  
Family pair tickets-¥3,800 Reserved seats-¥3,800  
/ Now on sale / • / 080-1944-2388 (Kojima)  
E-mail: tomokist@siren.ocn.ne.jp

### € Kiyoshi Shomura Classic Guitar Recital

1<sup>st</sup> Fri. / 6:45 pm (6:15 pm) / Higashi Kumin Bunka  
Center / Adults: Advance-¥3,000 At the door-  
¥3,500; High school students and under-¥1,500 (all  
non-reserved seats) / Ticket information &  
Inquiries: Higashi Kumin Bunka Center 082-264-  
5551; Hiroshima Guitar Association 0829-38-4558  
(Ibuki)

NEW!

### € New Century Jazz Quintet "Soul Conversion"

1<sup>st</sup> Fri. / 7:00 pm (6:30 pm) / Minami Kumin Bunka  
Center / Adults: Advance-¥4,000 At the door-  
¥4,500; University, senior & junior high students:  
¥2,000 (day-of-performance ticket only); Elementary  
school students-Free (all non-reserved seats) / Now  
on sale / •, Kumin Bunka Centers / Executive  
Committee 082-256-5912; Minami Kumin Bunka  
Center 082-251-4120 (9 am – 9 pm; closed on  
Mondays)

### € Rie Ballet Road Second Stage – Amour Ecarte –

3<sup>rd</sup> Sun. / 1:30 pm (1:00 pm) / JMS Aster Plaza /  
Free admission / Rie Ballet Road 090-5262-7712

NEW!

### € Choir "Polifonia Sacra":

#### The 25<sup>th</sup> Regular Concert

3<sup>rd</sup> Sun. / 2:00 pm (1:30 pm) / Elisabeth University  
of Music, Cecilia Hall / ¥1,000 / Please ask the  
concert organizer for ticket information. / 090-  
9733-7990 (Tanabe) HP: [http://polifonia-  
sacra.jpn.org](http://polifonia-sacra.jpn.org)

NEW!

### € Miho Tokaji Piano Concert

3<sup>rd</sup> Sun. / 3:00 pm (2:30 pm) / lifeone221 Hall /  
Advance: Adults-¥2,500 Students-¥2,000; At the  
door: Adults-¥3,000 Students-¥2,500 / Please ask  
the concert organizer for ticket information. /  
lifeone music 082-922-0028 E-mail:  
lifeone@cyber.ocn.ne.jp

NEW!

### € Irisée Pianistes Concert

8<sup>th</sup> Fri. / 6:30 pm (6:00 pm) / Higashi Kumin Bunka  
Center / ¥1,500 / Please ask the concert organizer  
for ticket information. / 080-4260-2550 (Ninomiya)

### € Hiroshima Symphony Orchestra: The 373<sup>rd</sup> Subscription Concert

(*R. Strauss: Symphonic Fragment from Josephslegende  
TrV231a; Beethoven: Symphony No. 3 in E-flat major Op.  
55 "Eroica"*)

8<sup>th</sup> Fri. / 6:45 pm (5:45 pm) / Hiroshima Bunka  
Gakuen HBG Hall / S-¥5,200 A-¥4,700 B-  
¥4,200 Students-¥1,500 (Student tickets are only  
sold at the Hiroshima Symphony Orchestra Office.) /  
Now on sale / j , n o ± ^ , Lawson, Ticket PIA,  
Chugoku Shimbun & Hiroshima Symphony  
Orchestra Office / Hiroshima Symphony Orchestra  
Office 082-532-3080 E-mail: info@hirokyo.or.jp  
Conductor: Christian Arming

### € Shochiku Kabuki

9<sup>th</sup> Sat. / • Noon (11:30 am) , 4:30 pm (4:00  
pm) / Kure City Bunka Hall / S-¥6,200 A-¥4,200  
B-¥3,100 Students (those who are 27 years old and  
under)-¥1,080 (Student tickets are only sold at Kure  
City Bunka Hall, Ticket PIA, Lawson, Seven-Eleven.  
Student ID will be required at the entrance on the  
performance day.) / Now on sale / • †, Ticket  
PIA, Lawson, Seven-Eleven / Kure City Bunka Hall  
0823-25-7878

This is a traditional Japanese performing art.

### € Teiko Maehashi Violin Recital

10<sup>th</sup> Sun. / 2:00 pm (1:30 pm) / Hatsukaichi Bunka  
Hall Sakurapia / ¥3,800 / Now on sale / • † ±,  
Lawson, Ticket PIA, e+, Sakurapia / Hatsukaichi  
Bunka Hall Sakurapia 0829-20-0111 (9 am – 7 pm,  
closed on Mondays)



Please feel free to contact the International Exchange Lounge at 082-247-9715.

E-mail: [golounge@pcf.city.hiroshima.jp](mailto:golounge@pcf.city.hiroshima.jp)

August 2017

NEW!

### € Piano Cosmos Concert Vol. 5

NEW!

10<sup>th</sup> Sun. / 3:00 pm / Gewand Halle / Adults-¥2,000 Students-¥1,000 / Please ask the concert organizer for ticket information. / 082-942-2987 (Kyomoto) E-mail: pianocosmos2000@gmail.com

### € DREAM THEATER

NEW!

10<sup>th</sup> Sun. / 5:00 pm (4:00 pm) / Hiroshima Bunka Gakuen HBG Hall / S-¥12,000 Premium seats-¥20,000 / Now on sale / Lawson, Ticket PIA, e+, • / Yumebanchi Hiroshima 082-249-3571 (Mon. – Fri., 11 am – 7 pm); HOME Event Center 082-221-7116 (Mon. – Fri., 10 am – 5 pm)

### € My Heart String Quartet “Memory of HIROSHIMA”

NEW!

12<sup>th</sup> Tue. / 6:45 pm (6:00 pm) / Hiroshima Kenmin Bunka Center / Advance: Adults-¥3,000 Students-¥2,000; At the door: Adults-¥3,500 Students-¥2,500 (all non-reserved seats) / Now on sale / • , Hiroshima Kenmin Bunka Center, Lawson / My Heart Concert Office 082-541-5901

### € Hiroshima Symphony Orchestra, Discovery Series: Dämmerung in Wien

(Suppé: *Banditenstreiche, Overture*; Schönberg: *Chamber Symphony No. 2 Op. 38*; Schubert: *Symphony No. 2 in B-flat major D125*)

14<sup>th</sup> Thurs. / 6:45 pm (5:45 pm) / JMS Aster Plaza / S-¥5,200 A-¥4,200 B- ¥3,200 Students-¥1,000 (Student tickets are only sold at the Hiroshima Symphony Orchestra Office.) / Now on sale / j , n o † ^ , Lawson, Ticket PIA, Chugoku Shimbun, JMS Aster Plaza & Hiroshima Symphony Orchestra Office / Hiroshima Symphony Orchestra Office 082-532-3080 E-mail: info@hirokyo.or.jp  
- Conductor: Tatsuya Shimono

### € The Phantom of the Opera by Gekidan Shiki

Sept. 14 – Nov. 5 / Ueno Gakuen Hall / S-¥10,800 A-¥8,640 B-¥6,480 C-¥3,240 / Now on sale / Please check the Gekidan Shiki's website about time schedule and ticket information:

<https://www.shiki.jp/applause/operaza/> / Gekidan Shiki Hiroshima Office 082-503-3411 (Mon. – Sat. except national holidays)

- Gekidan Shiki (Shiki Theatre Company) is one of the famous theater companies in Japan.

This musical will be played in Japanese.

NEW!

### € The 9<sup>th</sup> Piano Concert by the Members of Hiroshima Deutsche Lieder Gesellschaft

15<sup>th</sup> Fri. / 6:45 pm (6:15 pm) / Higashi Kumin Bunka Center / ¥1,000 / Now on sale / • „ / 082-878-3991 (Okano); 082-872-4852 (Ishimaru)

### € Zuckers: the 29<sup>th</sup> Concert

16<sup>th</sup> Sat. / 6:00 pm (5:30 pm) / Nishi Kumin Bunka Center / ¥900 / Please ask the concert organizer for ticket information. / 082-239-5171 (Sato)  
- Zuckers is a percussion ensemble.

NEW!

### € Wadaiko Performance

18<sup>th</sup> Mon. / 1:30 pm (1:00 pm) / Aki Kumin Bunka Center / Advance: Junior high school students and up-¥1,000 3 years old to elementary school 6<sup>th</sup> grade-¥500; At the door: Junior high school students and up-¥1,200; 3 years old to elementary school 6<sup>th</sup> grade-¥600 / Now on sale / JMS Aster Plaza, Kumin Bunka Centers / Aki Kumin Bunka Center 082-824-1330 (closed on Mondays)  
- Wadaiko is a traditional Japanese drum.

NEW!

### € Canon: 1<sup>st</sup> Concert

18<sup>th</sup> Mon. / 2:00 pm (1:30 pm) / Minami Kumin Bunka Center / Advance: Adults-¥2,000 Students-¥1,000; At the door: Adults-¥2,500 Students-¥1,500 / Now on sale / • „ / 090-2008-8517 (Tanioka)

- Canon is an ensemble group consisting of 2 vocals, a pianist, an electronic organist.

### € Hiroshima Happy New Ear 24: Jeroen Berwaerts Trumpet Recital

19<sup>th</sup> Tue. / 7:00 pm (6:30 pm) / JMS Aster Plaza / Advance: Adults-¥2,500 Students-¥1,500; At the door: Adults-¥3,000 Students-¥2,000 (all non-reserved seats) / Now on sale / • † , JMS Aster Plaza, Chugoku Shimbun, Ticket PIA, Lawson / Hiroshima Opera and Music Promotion Committee 082-244-8000

### € Disney on Ice Japan Tour 2017: Everyone's Story

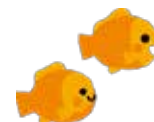
NEW!

Sept. 22 (Fri.), 23 (Sat.) & 24 (Sun.) / Hiroshima Green Arena / Now on sale / j , Seven-Eleven, e-get, Lawson, Ticket PIA, e+, Rakuten Ticket / Disney on Ice Hiroshima Office (inside Hiroshima TV) 082-541-5599 (Mon. – Fri., 10 am – 6 pm)

#### 2 Disney on Ice Schedule 2

Sept. 22	Sept. 23	Sept. 24
-	10:00 am	10:00 am
2:30 pm	2:00 pm	2:00 pm
6:30 pm	6:00 pm	6:00 pm

2 Doors will open 45 min. before the times above.



Please feel free to contact the International Exchange Lounge at 082-247-9715.

E-mail: [golounge@pcf.city.hiroshima.jp](mailto:golounge@pcf.city.hiroshima.jp)

August 2017

2 Ticket Prices<sup>2</sup>

	Sept. 22		Sept. 23 & 24	
	Adults <sup>1</sup>	Children <sup>2</sup>	Adults	Children
Premium Tickets <sup>3</sup>	¥8,000	¥8,000	¥8,000	¥8,000
S	¥5,500	¥4,500	¥6,000	¥5,000
Pair Tickets <sup>4</sup>	¥10,000		¥11,000	

## &lt;NOTICE&gt;

- <sup>1</sup> Junior high school students and up
  - <sup>2</sup> 3 years old to elementary school 6<sup>th</sup> grade
  - <sup>3</sup> Tickets that come with a 1,000 yen goods coupon
  - <sup>4</sup> Pair tickets are available for 6:30 pm on Sept. 22 and 6:00 pm on Sept. 23 & 24.
- <sup>2</sup> Children under 2 years old are free if they sit on the lap of an accompanying adult (one child per adult). Tickets are required for them if they take their own seats.

€ **Aki Classical Concert Vol. 177: Cool Classical Music!**

23<sup>rd</sup> Sat. / 2:00 pm (1:30 pm) / Aki Kumin Bunka Center / Free admission / Aki Kumin Bunka Center 082-824-1330 (closed on Mondays)

€ **Aki Classical Concert Vol. 178: Horn**

24<sup>th</sup> Sun. / 2:00 pm (1:30 pm) / Aki Kumin Bunka Center / Free admission / Aki Kumin Bunka Center 082-824-1330 (closed on Mondays)

€ **Quatuor Debussy**

NEW!

28<sup>th</sup> Thurs. / 6:30 pm (6:00 pm) / Hiroshima Kenmin Bunka Center / ¥2,800 (all non-reserved seats) / Now on sale / • †, Ticket PIA / 082-241-8868

€ **Sonare Concert Vol. 1**

29<sup>th</sup> Fri. / 6:00 pm (5:30 pm) / Higashi Kumin Bunka Center / Advance-¥1,000 At the door-¥1,500 / Please ask the concert organizer for ticket information. / Sonare 090-4699-6979

€ **CONDORS: Never Ending Story**

NEW!

29<sup>th</sup> Fri. / 7:00 pm (6:30 pm) / JMS Aster Plaza / Adults-¥6,000 Students-¥3,000 <sup>2</sup> Student tickets will be sold at the door only. Student ID is required. / Now on sale / Lawson, Ticket PIA, e+, Seven-Eleven, •, JMS Aster Plaza / TSS Office 082-253-1010 (Mon. – Fri., 10 am – 6 pm)  
 - CONDORS is a contemporary dance performance group.

€ **Jake Shimabukuro Japan Tour**

30<sup>th</sup> Sat. / 5:00 pm (4:00 pm) / Hiroshima Club Quattro / ¥7,300 / Now on sale / e+, Ticket PIA, Lawson, • / Yumebanchi Hiroshima 082-249-3571

- Jake Shimabukuro is a ukulele player from Hawaii.

€ **Hiroshima Oepra Renaissance: Così fan Tutte (by W. A. Mozart)**

☾ Sat., Sept. 30 • Sun., Oct. 1 / 2:00 pm / JMS Aster Plaza / SS-¥8,000 S-¥6,500 A-¥5,000 B-¥3,500 Students-¥2,000 <sup>2</sup> Student tickets are only sold at the door. / Now on sale / Please ask the concert organizer for ticket office information. / Hiroshima Opera and Music Promotion Committee 082-244-8000

- This will be played in Italian with Japanese subtitles.

October

NEW!

€ **MKU Brass: the 5<sup>th</sup> Regular Concert**

1<sup>st</sup> Sun. / 2:00 pm (1:30 pm) / Minami Kumin Bunka Center / Free admission / MKU Brass 090-5371-1139 (Mizuno)

€ **Drum TAO – Shippu**

NEW!

2<sup>nd</sup> Mon. / 7:00 pm (6:30 pm) / JMS Aster Plaza / SS-¥7,000 S-¥6,000 A-¥5,000 / Now on sale / j †, Lawson, Ticket PIA, e+ / Candy Promotion Hiroshima 082-249-8334 (Mon. – Fri., 10 am – 5 pm)  
 - This is a *taiko* (a traditional Japanese Drum) art performance.

€ **Bunraku (traditional Japanese puppet play)**

3<sup>rd</sup> Tue. / • 1:30 pm (1:00 pm) , 6:30 pm (6:00 pm) / JMS Aster Plaza / Stalls-¥4,500 Balcony seats- ¥2,500 / Now on sale / j ○, JMS Aster Plaza, Chugoku Shimbun, Ticket PIA, Lawson / JMS Aster Plaza 082-244-8000

€ **Paul Mauriat Remember Concert**

3<sup>rd</sup> Tue. / 2:00 pm (1:30 pm) / Hatsukaichi Bunka Hall Sakurapia / SS-¥9,800 S-¥8,800 A-¥7,800 U-22 (tickets for those who are 22 years old and under)-¥2,200 / Now on sale / Ticket PIA, Lawson, •, Sakurapia, Chugoku Shimbun / Hatsukaichi Bunka Hall Sakurapia 0829-20-0111

€ **Night Ranger Japan Tour**

4<sup>th</sup> Wed. / 7:00 pm (6:00 pm) / Hiroshima Club Quattro / ¥9,000 / Now on sale / e+, Ticket PIA, Lawson, •, Tower Records Hiroshima, Hiroshima Club Quattro / Hiroshima Club Quattro 082-542-2280

Please feel free to contact the International Exchange Lounge at 082-247-9715.

E-mail: [golounge@pcf.city.hiroshima.jp](mailto:golounge@pcf.city.hiroshima.jp)

August 2017



### € MR. BIG Japan Tour

5<sup>th</sup> Thurs. / 7:00 pm (6:00 pm) / Blue Live  
Hiroshima / ¥9,800 / From Sat., July 15 / Lawson,  
e+, Ticket PIA, • / TSS Office 082-253-1010  
(Mon. – Fri., 10 am – 6 pm); Yumebanchi Hiroshima  
082-249-3571 (Mon. – Fri., 11 am – 7 pm)

### € Mami Hagiwara Piano Recital

6<sup>th</sup> Fri. / 7:00 pm (6:30 pm) / Elisabeth University  
of Music, Cecilia Hall / ¥4,000 / Now on sale /  
• † ‡, Lawson, Ticket PIA / HOME Event Center  
082-221-7116 (Mon. – Fri., 10 am – 5 pm)

NEW!

### € Michie Koyama Piano Recital

7<sup>th</sup> Sat. / 3:00 pm (2:30 pm) / Hatsukaichi Bunka  
Hall Sakurapia / ¥4,000 / Now on sale / j ,  
Lawson, Ticket PIA, Sakurapia / Hatsukaichi Bunka  
Hall Sakurapia 0829-20-0111 (9 am – 7 pm; closed  
on Mondays)

NEW!

### € Hiroshima Wind Orchestra: Ultraman on Brass & the Planets Op. 32 (by G. Holst)

14<sup>th</sup> Sat. / 2:00 pm (1:30 pm) / Hatsukaichi Bunka  
Hall Sakurapia / Adults-¥2,000 High school  
students and under-¥1,000 / Now on sale / j ,  
Lawson, Ticket PIA, Sakurapia / Hatsukaichi Bunka  
Hall Sakurapia 0829-20-0111 (9 am – 7 pm; closed  
on Mondays)

### € John Duncan, Jim O'Rourke, Joe Talia & Eiko Ishibashi

17<sup>th</sup> Tue. / 7:30 pm (6:30 pm) / Hiroshima Club  
Quattro / Advance: Adults-¥3,500 Students-  
¥2,500; At the door: Adults-¥4000 Students-Not  
finalized (all non-reserved seats) / Now on sale /  
e+, Ticket PIA, Lawson, Stereo Records, Tower  
Records Hiroshima, • / Hiroshima Club Quattro  
082-542-2280

### € Jackson Browne Japan Tour

24<sup>th</sup> Tue. / 7:30 pm (7:00 pm) / Hiroshima Bunka  
Gakuen HBG Hall / S-¥11,000 A-¥10,000 / Now  
on sale / Lawson, e+, Ticket PIA, • / Yumebanchi  
Hiroshima 082-249-3571 (Mon. – Fri., 11 am – 7  
pm)

### € Hiroshima Symphony Orchestra: The 374<sup>th</sup> Subscription Concert

(*Ikuma Dan: Orchestra Fantasy "Flying Devi"; Berg:  
Violin Concerto (To the Memory of an Angel);  
Schumann: Symphony No. 3 in E-flat major Op. 97  
"Rhenish"*)  
27<sup>th</sup> Fri. / 6:45 pm (5:45 pm) / Hiroshima Bunka  
Gakuen HBG Hall / S-¥5,200 A-¥4,700 B-  
¥4,200 Students-¥1,500 (Student tickets are only  
sold at the Hiroshima Symphony Orchestra Office.) /  
From Sun., August 27 (from Mon., August 28 at the

Hiroshima Symphony Orchestra Office) /  
j , n o † ^ , Lawson, Ticket PIA, Chugoku  
Shimbun & Hiroshima Symphony Orchestra Office  
/ Hiroshima Symphony Orchestra Office 082-532-  
3080 E-mail: info@hirokyo.or.jp  
- Conductor: Tatsuya Shimono  
Violin: Serge Zimmermann

### € Kodo "Dadan"

28<sup>th</sup> Sat. / 2:00 pm (1:30 pm) / Hatsukaichi Bunka  
Hall Sakurapia / Adults-¥6,000 U-25 (tickets for  
those who are 25 years old and under)-¥4,000 /  
Now on sale / Sakurapia, • † ‡, e+, Seven-Eleven  
/ TSS 082-253-1010 (Mon. – Fri., 10 am – 6 pm)  
- This is a *taiko*, traditional Japanese drum performance.

### € Ingrid Fuzjko Hemming (piano) & State Symphony Capella of Russia conducted by Valery Polyansky

30<sup>th</sup> Mon. / 6:30 pm (6:00 pm) / Hiroshima Kokusai  
Kaigijo (International Conference Center  
Hiroshima), Phoenix Hall / S-¥9,800 A-¥7,800  
B-¥6,000 SS-¥12,000 / Now on sale / Ticket PIA,  
Lawson, e+, • † / Sunrise Promotion Tokyo  
0570-00-3337 (10 am – 6 pm)

## November

### € Marimba Paradise Special Concert

3<sup>rd</sup> Fri. / 2:30 pm (1:45 pm) / Nishi Kumin Bunka  
Center / Advance: Adults-¥2,500 High school  
students and under & Seniors-¥1,500; At the door:  
Adults-¥3,000 High school students and under &  
Seniors-¥2,000 / Now on sale / • † ‡, JMS Aster  
Plaza, Kumin Bunka Centers, Chugoku Shimbun /  
Nishi Kumin Bunka Center 082-234-1960 (closed  
on Mondays)

### € Hiroshima Symphony Orchestra: Bouquet of Music HSO Masterpiece Concert ~ Autumn ~

(*Sibelius: Finlandia Op. 26; Grieg: Piano Concerto in A  
minor Op. 16; Tchaikovsky: Swan Lake Op. 20*)  
3<sup>rd</sup> Fri. / 3:00 pm (2:00 pm) / Hiroshima Kokusai  
Kaigijo (International Conference Center  
Hiroshima), Phoenix Hall / S-¥4,200 Pair tickets  
(S seats)-¥6,400 A-¥3,200 B-¥2,200 Students-  
¥1,500 (Student tickets are only sold at the Hiroshima  
Symphony Orchestra Office.) / Now on sale /  
j , n o † ^ , Lawson, Ticket PIA, Chugoku  
Shimbun & Hiroshima Symphony Orchestra Office  
/ Hiroshima Symphony Orchestra Office 082-532-  
3080 E-mail: info@hirokyo.or.jp  
- Conductor: Naoto Otomo / Piano: Kanon Matsuda

Please feel free to contact the International Exchange Lounge at 082-247-9715.

E-mail: golounge@pcf.city.hiroshima.jp

August 2017

### € Chamber Music Concert

5<sup>th</sup> Sun. / 2:30 pm (1:45 pm) / Nishi Kumin Bunka Center / Advance: Adults-¥3,000 High school students and under & Seniors-¥2,000; At the door: Adults-¥3,500 High school students and under & Seniors-¥2,500 / Now on sale / • † ‡ , JMS Aster Plaza, Kumin Bunka Centers, Chugoku Shimbun / Nishi Kumin Bunka Center 082-234-1960 (closed on Mondays)

### € THE STRYPES Japan Tour 2017

6<sup>th</sup> Mon. / 7:00 pm (6:00 pm) / Hiroshima Club Quattro / ¥6,800 / Now on sale / e+, Ticket PIA, Lawson, • / Yumebanchi Hiroshima 082-249-3571

NEW!

### € The Glenn Miller Orchestra Japan Tour 2017

11<sup>th</sup> Sat. / 3:00 pm (2:15 pm) / Hatsukaichi Bunka Hall Sakurapia / Adults-¥5,500 Students-¥3,000 / Now on sale / Sakurapia, Lawson, Ticket PIA, e+, • / Candy Promotion Hiroshima 082-249-8334 (Mon. – Fri., 11:00 am – 6:30 pm); Hatsukaichi Bunka Hall Sakurapia 0829-20-0111

NEW!

### € Art Garfunkel Japan Tour 2017

13<sup>th</sup> Mon. / 7:00 pm (6:30 pm) / JMS Aster Plaza / S-¥11,000 A-¥10,000 / From Sat., August 5 / • , Lawson, Ticket PIA, e+ / Yumebanchi Hiroshima 082-249-3571 (Mon. – Fri., 11 am – 7 pm)

### € Hiroshima Symphony Orchestra: The 375<sup>th</sup> Subscription Concert

(*Tchaikovsky: Piano Concerto No. 1 in B-flat minor Op. 23; Bartók: Concerto for Orchestra Sz. 116*)

14<sup>th</sup> Tue. / 6:45 pm (5:45 pm) / Hiroshima Bunka Gakuen HBG Hall / S-¥6,200 A-¥5,700 B-¥5,200 Students-¥1,500 (Student tickets are only sold at the Hiroshima Symphony Orchestra Office.) / From Thurs., September 14 / j , n o † ^ , Lawson, Ticket PIA, Chugoku Shimbun & Hiroshima Symphony Orchestra Office / Hiroshima Symphony Orchestra Office 082-532-3080 E-mail: info@hirokyo.or.jp  
- Conductor: Tatsuya Shimono

NEW!

### € Taro Hakase Concert Tour 2017: Violinism III

17<sup>th</sup> Fri. / 6:30 pm (6:00 pm) / Hiroshima Bunka Gakuen HBG Hall / ¥7,800 / From Fri., August 11 / • , Lawson, Ticket PIA, e+ / Candy Promotion Hiroshima 082-249-8334

### € Disney on Classic: a Magical Night 2017

~ Brillante ~

19<sup>th</sup> Sun. / 5:00 pm (4:00 pm) / Hiroshima Bunka Gakuen HBG Hall / S-¥8,300 A-¥6,700 / From Sat., August 5 / • , Lawson, Ticket PIA, e+, Rakuten Ticket / UNION Music Office 082-247-6111

## December

### € Hiroshima Symphony Orchestra, Discovery Series: Dämmerung in Wien

(*Suppe: Die schöne Galathea, Overture; J. S. Bach (arr. A. Webern): Musikalisches Opfer, Ricercare; Webern: Symphony Op. 21; Schubert: Symphony No. 3 in D major D200*)

1<sup>st</sup> Fri. / 6:45 pm (5:45 pm) / JMS Aster Plaza / S-¥5,200 A-¥4,200 B- ¥3,200 Students-¥1,000 (Student tickets are only sold at the Hiroshima Symphony Orchestra Office.) / From Sun., October 1 (from Mon., October 2 at the Hiroshima Symphony Orchestra Office) / j , n o † ^ , Lawson, Ticket PIA, Chugoku Shimbun, JMS Aster Plaza & Hiroshima Symphony Orchestra Office / Hiroshima Symphony Orchestra Office 082-532-3080 E-mail: info@hirokyo.or.jp  
- Conductor: Tatsuya Shimono

### € Mariinsky Theatre Orchestra in Hiroshima

2<sup>nd</sup> Sat. / 5:00 pm / Hiroshima Bunka Gakuen HBG Hall / S-¥15,000 A-¥12,000 B-¥8,000 / Now on sale / e+, Ticket PIA, Lawson, • † / Hiroshima TV Event Information Center 082-249-1218 (Mon. – Fri., 10 am – 6 pm)



Please feel free to contact the International Exchange Lounge at 082-247-9715.

E-mail: [golounge@pcf.city.hiroshima.jp](mailto:golounge@pcf.city.hiroshima.jp)

August 2017



# Event Halls

® **Hiroshima Bunka Gakuen HBG Hall 広島文化学園 HBG ホール**

(3-3 Kako-machi, Naka-ku, Hiroshima Tel. 082-243-8881)

† Take the No.24 bus bound for Yoshijima Eigyocho (吉島営業所) and get off at Kako-machi (加古町).  
Walking time to destination: 2 minutes

® **Hiroshima Kenmin Bunka Center 広島県民文化センター**

(1-5-3 Ote-machi, Naka-ku, Hiroshima Tel. 082-245-2311)

† Take a streetcar or a bus and get off at Hondori (本通) or Kamiya-cho (紙屋町). Walking time to destination: 5 minutes

® **JMS Aster Plaza JMS アステールプラザ**

(4-17 Kako-machi, Naka-ku, Hiroshima Tel. 082-244-8000)

† Take the No.24 bus bound for Yoshijima Eigyocho (吉島営業所) and get off at Kako-machi (加古町).  
Walking time to destination: 2 minutes

® **Ueno Gakuen Hall 上野学園ホール**

(19-1 Hakushima-kita-machi, Naka-ku, Hiroshima Tel. 082-223-6367)

† Take the Astramline bound for Koiki Koen-mae (広域公園前) or Chorakuji (長楽寺) Station and get off at Hakushima (白島) Station. Walking time to destination: 3 minutes

® **Hiroshima Kokusai Kaigijo (International Conference Center Hiroshima), Phoenix Hall 広島国際会議場フェニックスホール**

(1-5 Nakajima-cho, Naka-ku, Hiroshima Tel. 082-242-7777)

† Get on a Hiroshima Bus bound for Yoshijima and get off at Heiwa Kinenkoen (平和記念公園).

† Get off at the Chuden-mae (中電前) or Genbaku Dome-mae (原爆ドーム前) Streetcar Stops. Walking time to destination: 5 minutes

® **Hiroshima Club Quattro 広島クラブクアトロ**

(10-1 Hondori, Naka-ku, Hiroshima (Hiroshima PARCO Hon-kan 10F) Tel. 082-542-2280)

† Take a streetcar and get off at Hatchobori (八丁堀). Walking time to destination: 5 minutes

® **Hiroshima Green Arena 広島グリーンアリーナ**

(4-1 Moto-machi, Naka-ku, Hiroshima Tel. 082-228-1111)

† Take a streetcar and get off at Kamiya-cho-nishi (紙屋町西) or Kamiya-cho-higashi (紙屋町東).  
Walking time to destination: 5 minutes

® **Hiroshima Sun Plaza 広島サンプラザ**

(3-1-1 Shoko Center, Nishi-ku, Hiroshima Tel. 082-278-5000)

† Take a train or streetcar to Miyajima and get off at JR Shin-inokuchi (新井口) Station (JR Sanyo Line) or Shoko Center-iriguchi (商工センター入り口) Streetcar Stops (Hiroden Miyajima Line). Walking time to destination: 5 minutes

® **Elisabeth University of Music エリザベト音楽大学**

(4-15 Nobori-machi, Naka-ku, Hiroshima Tel. 082-221-0918)

† Take a streetcar and get off at Kanayama-cho (銀山町) or Jogakuin-mae (女学院前). Walking time to destination: 10 minutes

® **Higashi Kumin Bunka Center 東区民文化センター**

(10-31 Higashi-kaniya-cho, Higashi-ku, Hiroshima Tel. 082-264-5551)

† From the Shinkansen Exit of the JR Hiroshima (広島) Station, walking time to destination is 10 minutes.

Please feel free to contact the International Exchange Lounge at 082-247-9715.

E-mail: [golounge@pcf.city.hiroshima.jp](mailto:golounge@pcf.city.hiroshima.jp)

August 2017

® **Nishi Kumin Bunka Center 西区民文化センター**

(6-1 Yokogawa Shin-machi, Nishi-ku, Hiroshima Tel. 082-234-1960)

† From JR Yokogawa (横川) Station, walking time to destination is 5 minutes.

® **Asaminami Kumin Bunka Center 安佐南区民文化センター**

(22-17 Nakasuji 1-chome, Asaminami-ku, Hiroshima Tel. 082-879-3060)

† From *Astramline* Nakasuji (中筋) Station, walking time to destination is 5 minutes.

® **Saeki Kumin Bunka Center 佐伯区民文化センター**

(6-1-10 Itsukaichi-chuo, Saeki-ku, Hiroshima Tel. 082-921-7550)

† From Hiroshima Bus Center (*Sogo* Hiroshima, 3F), take a bus to Yakushigaoka-danchi (薬師が丘団地), Shikigaoka-danchi (四季が丘団地), Higashi-kannondai-danchi (東観音台団地) or Ajinadai-kita (阿品台北) and get off at Saeki-kumin Bunka Center-mae (佐伯区民文化センター前). Walking time to destination: 1 minutes

® **Aki Kumin Bunka Center 安芸区民文化センター**

(2-16 Funakoshi-minami 3-chome, Aki-ku, Hiroshima Tel. 082-824-1330)

† From JR Kaitaichi (海田市) Station (JR Sanyo Line), walking time to destination is 5 minutes.

® **Blue Live Hiroshima ブルーライブ広島**

(3-12-69 Ujina Kaigan, Minami-ku, Hiroshima Tel. 082-250-5522)

† Take a streetcar for Hiroshima-ko (No. 1, 3 or 5) and get off at Kaigan-dori (海岸通). Walking time to destination: 5 minutes

® **Live Juke ライブジューク**

(Crystal Plaza 19F, Naka-machi, Naka-ku, Hiroshima Tel. 082-567-5011)

† From Takanobashi (鷹野橋) or Nisseki Byouin-mae (日赤病院前) Streetcar Stops, walking time to destination is 7 minutes

® **lifeone221 hall lifeone221 ホール**

(2-2-1 Itsukaichi-chuo, Saeki-ku, Hiroshima-shi Tel.082-922-0028)

† Take a bus from JR Itsukaichi (五日市) Station (north exit) and get off at Itsukaichi-chuo 2-chome (五日市中央二丁目). Walking time to destination: 5 minutes.

® **Hiroshima Nagarekawa Church 広島流川協会**

(8-30 Kami-nobori-cho, Naka-ku, Hiroshima Tel. 082-221-1813)

† From Jogakuin-mae (女学院前) or Shukkeien-mae (縮景園前) Streetcar Stop, walking time to destination is 5 minutes.

® **Jodoshinshu Honganji-ha Hiroshima Betsuin 浄土真宗本願寺派広島別院**

(1-19 Tera-machi, Naka-ku, Hiroshima Tel. 082-231-0302)

† Get off at Betsuin-mae (別院前) Streetcar Stop.

® **Hatsukaichi Bunka Hall Sakurapia はつかいち文化ホールさくらぴあ**

(1-11-1 Shimo-hera, Hatsukaichi City Tel. 0829-20-0111)

† Take a train on the JR Sanyo Line bound for Iwakuni and get off at JR Miyauchi Kushido (宮内串戸) Station. Walking time to destination: 15 minutes

† Take a streetcar on the Hiroden Miyajima Line and get off at Hatsukaichi Shiyakusho-mae (廿日市市役所前). Walking time to destination: 8 minutes

® **Kure City Bunka Hall 呉市文化ホール**

(3-10-1 Chuo, Kure City Tel. 0823-25-7878)

† From JR Kure (呉) Station (JR Kure Line), walking time to destination is 7 minutes.



Please feel free to contact the International Exchange Lounge at 082-247-9715.

E-mail: [golounge@pcf.city.hiroshima.jp](mailto:golounge@pcf.city.hiroshima.jp)

August 2017



# Museums



**A: Adults**    **U: University Students**    **H: High School Students**  
**J: Junior High School Students**    **E: Elementary School Students**  
**S: Seniors (65 years old and up - Identification showing your date of birth is required.)**

<sup>2</sup> Generally, admission is allowed up to 30 min. prior to closing. <sup>2</sup>

## Hiroshima Museum of Art

Address: 3-2 Moto-machi, Naka-ku, Hiroshima City  
 Tel: 082-223-2530  
 Hours: 9:00 am – 5:00 pm  
 Closed: Mondays (except during special exhibitions)  
 URL: <http://www.hiroshima-museum.jp>

### Special Exhibition

#### i Akiko Hayashi's Picture Book Illustrations

Period: Sat., Jul. 15 – Sun., Aug. 27  
 Admission Fee:

A -¥1,200 (¥1,000), S-¥1,000,  
 U&H-¥900 (¥700), J&E-¥500 (¥300)

<sup>2</sup> Advance ticket prices shown in ( ).

### Collection Exhibition

#### i Modern European Paintings

Period: Year-round

## Hiroshima City Museum of Contemporary Art

Address: 1-1 Hijiyama Koen, Minami-ku, Hiroshima City  
 Tel: 082-264-1121  
 Hours: 10:00 am – 5:00 pm  
 Closed: Mondays (except national holiday)  
 URL: <http://www.hcmca.cf.city.hiroshima.jp/>

### Special Exhibition

#### i The 10<sup>th</sup> Hiroshima Prize: Mona Hatoum

Period: Sat., Jul. 29 – Sun., Oct. 15

Admission Fee:

A-¥1,030 (¥820), U-¥720 (¥620),  
 S&H-¥510 (¥410), J & under-Free

<sup>2</sup> Advance ticket prices shown in ( ).

### Collection Exhibition

Admission Fee: A-¥360 / U-¥270 / S&H-¥170  
 / J & under- Free

Holders of special exhibition admission tickets are also entitled to view the collection exhibition.

### i 2017 – 2:

**Collection Highlights & Special Feature:**  
**“Forms of Light / Scenes of Light”**

Period: Sat., Jun. 3 – Sun., Sept. 10

### Video Art Program (Free admission)

#### i A Window to the World

Period: Year-round

### Open Program (Free admission)

#### i Summer Workshop Project 2017\_Nao Nishihara

Period: Fri., Aug. 11 – Sun., Sept. 24

## Hiroshima Prefectural Art Museum

Address: 2-22 Kaminobori-cho, Naka-ku, Hiroshima City  
 Tel: 082-221-6246  
 Hours: 9:00 am – 5:00 pm  
<sup>2</sup> Open until 8:00 pm on Fridays (Apr. – Oct.)  
<sup>2</sup> Open until 7:00 pm on Fridays (Nov. – Mar.)  
 Closed: August 28  
 URL: <http://www.hpam.jp/>

### Special Exhibitions

#### i The Shaun the Sheep Exhibition: An Aardman Animations 40<sup>th</sup> Anniversary Event

Period: Sat., Jul. 15 – Sun., Aug. 27

Admission Fee:

A-¥1,200 (¥1,000), U&H-¥1,000 (¥800),  
 J&E-¥600 (¥400)

<sup>2</sup> Advance ticket prices shown in ( ).

#### i Leonardo da Vinci and the Battle of Anghiari – The Mystery of Tavola Doria –

Period: Tue., Sept. 5 – Sun., Oct. 22

Admission Fee: A-¥1,300 (¥1,100), U&H-¥900  
 (¥700), J&E-¥600 (¥400)

<sup>2</sup> Advance ticket prices shown in ( ).

### Collection Exhibition

Admission Fee (all exhibitions):

A-¥510, U-¥310, H & under-Free

Holders of special exhibition admission tickets are also entitled to view the Museum's Collection exhibits.

#### i Summer Museum: Searching for Animals

Period: Wed., Jul. 5 – Sun., Sept. 10

Please feel free to contact the International Exchange Lounge at 082-247-9715.

E-mail: [golounge@pcf.city.hiroshima.jp](mailto:golounge@pcf.city.hiroshima.jp)

August 2017

**Kure Municipal Museum of Art**

Address: Irifuneyama Koen, Saiwai-cho, Kure City  
 Tel: 0823-25-2007  
 Hours: 10:00 am – 5:00 pm  
 Closed: Tuesdays (except national holidays)  
 URL: <http://kure-bi.jp/>

**Special Exhibition**

- i **Mugonkan – Pictures Left Behind**  
 Period: Sat., Sept. 16 – Sun., Nov. 19  
 Admission Fee: A-¥1,000, U&H-¥600,  
 J&E-¥400

**Collection Exhibition**

- i **Colors**  
 Period: Wed., Jun. 28 – Sun., Sept. 3  
 Admission Fee: A&U-¥300, H-¥180,  
 J&E-¥120

**Fukuyama Museum of Art**

Address: 2-4-3 Nishi-machi, Fukuyama City  
 Tel: 084-932-2345  
 Hours: 9:30 am – 5:00 pm  
 Open until 7:00 pm on Aug. 25, 26 & Sept. 2  
 Closed: Mondays (except Aug. 14)  
 HP: <http://www.city.fukuyama.hiroshima.jp/site/fukuyama-museum/>

**Special Exhibition**

- i **The 120<sup>th</sup> Anniversary of the Birth of Seiji Togo, A Retrospective of Togo's Depiction of Women**  
 Period: Sat., Jul. 8 – Sun., Sept. 3  
 Admission Fee: A&U-¥1,000, H & under-Free

**Collection Exhibition**

- i **Summer Exhibition Abstract Arts**  
 Period: Wed., Jun. 28 – Sun., Sept. 10  
 Admission Fee: A&U-¥300, H & under-Free

**Onomichi City Museum of Art**

Address: 17-19 Nishitsuchido-cho, Onomichi City  
 (Inside Senkoji Park)  
 Tel: 0848-23-2281  
 Hours: 9:00 am – 5:00 pm  
 Closed: Mondays except national holidays  
 URL: <http://www7.city.onomichi.hiroshima.jp/>

**Special Exhibition**

- i **"Nintama Rantarō" Museum**  
 Period: Sat., Jul. 22 – Sun., Sept. 3  
 Admission Fee: A-¥800, U&H-¥550,  
 J & under-¥Free  
 J "Nintama Rantarō" is a Japanese popular *ninja* animation series based on the manga series "Rakudai Ninja Rantarō" by Sobê Amako.

**Okuda Genso Sayume Art Museum**

Address: 453-6 Higashi Sakeya-machi, Miyoshi City  
 Tel: 0824-65-0010  
 Hours: 9:30 am – 5:00 pm  
<sup>2</sup> Open until 9:00 pm on Aug. 9, Sept. 6,  
 Oct. 4, 6 & Nov. 4  
 Closed: September 13 & October 11  
 URL: <http://www.genso-sayume.jp>

**Special Exhibition**

- i **Sekai Meisaku Gekijō ("World Masterpiece Theater"): The 40-Year History of Japanese Animation Works**  
 Period: Fri., Jul. 7 – Sun., Aug. 20  
 Admission Fee:  
 A-¥800 (¥700), Tickets for couple- ¥1,500  
 U&H-¥400 (¥300), J & under-Free  
<sup>2</sup> Advance ticket prices shown in ( ).

**i Koshu Endo Photo Exhibition**

Period: Fri., Sept. 1 – Sun., Nov. 5  
 Admission Fee:  
 A-¥1,000 (¥900), Tickets for couple-  
 ¥1,800 U&H-¥500 (¥400), J & under-Free  
<sup>2</sup> Advance ticket prices shown in ( ).

**Fukuya Department Store (Hiroshima Eki-mae)**

Address: 9-1 Matsubara-cho, Minami-ku, Hiroshima City  
 Tel: 082-568-3111  
 Hours: 10:00 am – 8:00 pm  
 URL: <http://www.fukuya-dept.co.jp/>

**Special Exhibition**

- i **Disney's Princesses**  
 Period: Fri., Aug. 11 – Tue., Aug. 29  
 Admission Fee:  
 A-¥1,500 (¥1,300)  
 U&H-¥1,200 (¥1,000)  
 4 years old – Junior high school students  
 -¥800 (¥700)  
 3 years old & under-Free  
<sup>2</sup> Advance ticket prices shown in ( ).

**Rai Sanyo Historic Site Museum**

Address: 5-15 Fukuro-machi, Naka-ku, Hiroshima City  
 Tel: 082-298-5051  
 Hours: 9:30 am – 5:00 pm  
 Closed: Mondays except national holidays  
 URL: <http://pref.hiroshima.lg.jp/site/raisanyou/>

**Special Exhibition**

- i **Modern Japanese Swords**  
 Period: Sat., Jul. 15 – Sun., Aug. 27  
 Admission Fee: A-¥300, U&H-¥220,  
 J&E-¥150



Please feel free to contact the International Exchange Lounge at 082-247-9715.

E-mail: [golounge@pcf.city.hiroshima.jp](mailto:golounge@pcf.city.hiroshima.jp)

August 2017

# Hiroshima Toyo Carp Schedule 2017

The Toyo Carp (Hiroshima's professional baseball team) plays about 60 games at the MAZDA Zoom-Zoom Stadium Hiroshima every year.

## GAME SCHEDULE

### AUGUST

Tue., 1<sup>st</sup>, 6:00 pm / vs. Hanshin Tigers  
 Wed., 2<sup>nd</sup>, 6:00 pm / vs. Hanshin Tigers  
 Thurs., 3<sup>rd</sup>, 6:00 pm / vs. Hanshin Tigers  
 Fri., 11<sup>th</sup>, 6:00 pm / vs. Yomiuri Giants  
 Sat., 12<sup>th</sup>, 6:00 pm / vs. Yomiuri Giants  
 Sun., 13<sup>th</sup>, 6:00 pm / vs. Yomiuri Giants  
 Fri., 18<sup>th</sup>, 6:00 pm / vs. Tokyo Yakult Swallows  
 Sat., 19<sup>th</sup>, 6:00 pm / vs. Tokyo Yakult Swallows  
 Sun., 20<sup>th</sup>, 6:00 pm / vs. Tokyo Yakult Swallows  
 Fri., 25<sup>th</sup>, 6:00 pm / vs. Chunichi Dragons  
 Sat., 26<sup>th</sup>, 6:00 pm / vs. Chunichi Dragons  
 Sun., 27<sup>th</sup>, 6:00 pm / vs. Chunichi Dragons

### SEPTEMBER

Tue., 5<sup>th</sup>, 6:00 pm / vs. Hanshin Tigers  
 Wed., 6<sup>th</sup>, 6:00 pm / vs. Hanshin Tigers  
 Thurs., 7<sup>th</sup>, 6:00 pm / vs. Hanshin Tigers  
 Tue., 12<sup>th</sup>, 6:00 pm / vs. Yokohama DeNA Baystars  
 Wed., 13<sup>th</sup>, 6:00 pm / vs. Yokohama DeNA Baystars  
 Thurs., 14<sup>th</sup>, 6:00 pm / vs. Yokohama DeNA Baystars  
 Sat., 16<sup>th</sup>, 2:00 pm / vs. Tokyo Yakult Swallows  
 Sun., 17<sup>th</sup>, 1:30 pm / vs. Tokyo Yakult Swallows  
 Fri., 22<sup>nd</sup>, 6:00 pm / vs. Yomiuri Giants  
 Sat., 23<sup>rd</sup>, 1:30 pm / vs. Yomiuri Giants

## TICKET OFFICES

### w MAZDA Zoom-Zoom Stadium Hiroshima

Tickets can be purchased at the ticket booths at the entrances of the stadium (closed on August 6).

#### Booth Opening Times

11:30 am (days with night games) / 11:00 am (days with day games)

11:00 am – 4:00 pm (days when there are no games)

### w Carp Baseball Gallery (6-7 Hatcho-bori, Naka-ku)

OPEN: 10:00 am – 4:00 pm / CLOSED: No fixed times

TEL: 227-2222

### w Convenience Stores

Tickets are available at convenience stores such as Lawson, Seven-Eleven, FamilyMart and Sunkus.

## ACCESS

### MAZDA Zoom-Zoom Stadium Hiroshima:

From JR Hiroshima Station, walking time to the stadium is 10 minutes.

## INQUIRIES

### Hiroshima Toyo CARP

Tel. (082) 223-2141 Fax. (082) 502-1189 URL: [www.carp.co.jp/](http://www.carp.co.jp/)



Please feel free to contact the International Exchange Lounge at 082-247-9715.

E-mail: [golounge@pcf.city.hiroshima.jp](mailto:golounge@pcf.city.hiroshima.jp)

August 2017

# Sanfrecce Hiroshima FC Schedule 2017

## GAME SCHEDULE Date / Kick Off / Game / Venue / Ticket Sales

### 2017 J League

Wed., August 9 / 7:00 pm / vs. Gamba Osaka / EDION Stadium Hiroshima / Now on sale

Sat., August 19 / 7:00 pm / vs. Ventforet Kofu / EDION Stadium Hiroshima / Now on sale

Sat., September 16 / 6:30 pm / vs. Cerezo Osaka / EDION Stadium Hiroshima / From Sat., August 5

Sat., September 30 / 4:00 pm / vs. Hokkaido Consadole Sapporo / EDION Stadium Hiroshima / From Sat., August 5

Sat., October 21 or Sun., October 22 / 2:00 pm (Oct. 21) or 5:00 pm (Oct. 22) / vs. Kawasaki Frontale / EDION Stadium Hiroshima / From Sat., September 23

Sun., October 29 / 4:00 pm / vs. Urawa Red Diamonds / EDION Stadium Hiroshima / From Sat., September 2

Sun., November 26 / 1:00 pm / vs. F. C. Tokyo / EDION Stadium Hiroshima / From Sat., October 7

## TICKETS Seats / Advance Tickets / At the Door

W Reserved Seats SS / ¥5,300 / ¥5,900    W Reserved Seats SA / ¥3,700 / ¥4,300

W Unreserved Seats for Adults / ¥2,600 / ¥3,200

W Unreserved Seats for Students (High School Students and under) / ¥1,000 / ¥1,500

## ACCESS

### W EDION Stadium Hiroshima (Hiroshima Big Arch)

Take the *Astramline* bound for *Koiki-koen-mae* (広域公園前) and get off at the last station, *Koiki-koen-mae* (広域公園前).

From *Hondori* Station: One way fare - ¥480    Travel time - 35 min.

## TICKET OFFICES

W Sanfrecce Hiroshima Official Shop V-POINT (Shareo, underground shopping mall, Kamiya-cho / Tel. 248-3317 / Mon. – Sat.: 11:00 am – 9:00 pm; Sun. & national holidays: 10:00 am – 8:00 pm / Open every day)

W EDION Play Guide (SUNMALL, 1F; 10:30 am – 8:00 pm)

W Fukuya (Hiroshima Station) (7F)

W Alpark Tenmaya (3F)

W Convenience Stores (FamilyMart, Seven Eleven, CircleKSunkus and Lawson)

## INQUIRIES

Sanfrecce HIROSHIMA    Tel. 233-3233    URL: [www.sanfrecce.co.jp](http://www.sanfrecce.co.jp)



Please feel free to contact the International Exchange Lounge at 082-247-9715.

E-mail: [golounge@pcf.city.hiroshima.jp](mailto:golounge@pcf.city.hiroshima.jp)

August 2017



# Seasonal Event Information

## August 2017

Ⓜ Event schedules are subject to change.  
Please contact event organizers before you go.



### Events Held in Hiroshima City

**Every Wednesday between April 5 and December 27, 2017**

**J August 2, 9, 16, 23 & 30; Sept. 6, 13, 20 & 27**

<sup>2</sup> Special *kagura* performance will be held on August 19 (see below for more information).

**Hiroshima Kagura** ひろしまけんみんぶんか 広島県民文化センター「ひろしまがくら 広島神楽」ていきこうえん 定期公演

**TIME:** 7:00 pm – 8:45 pm (The venue will open at 6:00 pm.)

**VENUE:** Hiroshima Kenmin Bunka Center, Ote-machi, Naka-ku (located near Hondori Shopping Street)

**ACCESS:** From Kamiya-cho-nishi or Hondori Streetcar Stops, walking time to destination is 3 minutes.

**TICKETS:** ¥1,000 <sup>2</sup> All non-reserved seats

<sup>2</sup> Tickets will be sold from 5:00 pm on the performance date at the center.

There are no advance tickets.

**INQUIRIES:** Hiroshima Kenmin Bunka Center 082-245-2311

▼ “Hiroshima Kagura” Special Performance ▼

**DATE & TIME:** Sat., August 19 1:00 pm (The venue will open at noon.)

**VENUE:** Hiroshima Kenmin Bunka Center

**TICKETS:** ¥2,000 <sup>2</sup> All reserved seats

<sup>2</sup> Advance tickets will be sold from Mon., July 3 at the center.

<sup>2</sup> Tickets will be sold from 11:00 am on the performance date at the center.

**Sun., August 6 & 20**

**Hiroshima Minato Marché** ひろしまみなとマルシェ

**TIME:** 8:00 am – 2:00 pm

**PLACE:** Open Space between East and West Terminal of Hiroshima Port, Minami-ku

**ACCESS:** Take the No. 1, 3 or 5 streetcar bound for Hiroden Ujina or Hiroshima Port and get off at the last stop, Hiroshima Port.

**INQUIRIES:** Hiroshima Minato Marché Office 082-255-6646

Ⓜ You can buy and taste locally-grown fresh vegetables and other food products at the marché.

**Sat., August 5 & Sun., August 6**

**Sumiyoshisan Festival** すみよしさん

**TIME:** There is no specific starting time. Most people come in the evening.

**PLACE:** Sumiyoshi Shrine, Sumiyoshi-cho, Naka-ku

**ACCESS:** j Take the No. 24 bus and get off at Sumiyoshi-cho. Walking time to destination: 5 minutes

k Take the No. 3, 6, or 10 bus and get off at Kako-machi. Walking time to destination: 3 minutes

**INQUIRIES:** Sumiyoshi Shrine 082-241-0104

Ⓜ Fireworks will be set off from 8:00 pm on both days. Rowing of an ancient-style boat in the river and *kagura* performance will also be held.

Please feel free to contact the International Exchange Lounge at 082-247-9715.

E-mail: [golounge@pcf.city.hiroshima.jp](mailto:golounge@pcf.city.hiroshima.jp)

August 2017

**Sun., August 6****The 72<sup>nd</sup> Peace Memorial Ceremony**だい かいへい わきねんしきてん  
第72回 平和記念式典**TIME:** 8:00 am – 8:45 am**PLACE:** In front of the Cenotaph for the A-Bomb Victims, Peace Memorial Park**INQUIRIES:** *Shimin Katsudo Suishin Ka* (Citizens Activities Promotion Division, the City of Hiroshima)  
082-504-2103

© On August 6<sup>th</sup>, at 8:15 am, at the sound of a bell rung by a representative from the bereaved families and one youth representative, a moment of silence is observed for the deceased. At that moment, factory sirens as well as temple and church bells are rung throughout the city, and Hiroshima is deeply wrapped in prayer. The Mayor of Hiroshima delivers a peace declaration addressed to the whole world at the ceremony. On this day, people recall what happened on August 6<sup>th</sup>, 1945, and in their prayers, ponder the meaning of peace.

**<NOTICE>**

Reserved seating with receivers that will broadcast simultaneous English interpretations to non-Japanese speaking guests of the 2017 Peace Memorial Ceremony is now full. If you decide to apply now, you will be added to a waiting list.

Seating is available in the Unassigned Seating area. However, as seating is open to anyone on a first come, first served basis, you are encouraged to arrive early. Reservations are not accepted for this seating area. Please note that the International Conference Center will be open to the public and will display live footage (Japanese only, no interpretation receivers available) of the Ceremony in the Himawari Room of the 2<sup>nd</sup> basement floor.

Please see the Hiroshima City website (<http://www.city.hiroshima.lg.jp/www/contents/1493372490844/index.html>) or contact the International Relations Division of the City of Hiroshima (Tel: 082-504-2106 / e-mail: [kokusai@city.hiroshima.lg.jp](mailto:kokusai@city.hiroshima.lg.jp)) for more information.

**Sun., August 6****Floating Paper Lanterns**ピースメッセージとうろう なが流し**TIME:** 6:00 pm – 9:30 pm ® Participants will be accepted from 6:00 am to 9:00 pm on the day of.**PLACE:** Y Chuo Area: South Side of the Atomic Bomb Dome

Y Fukushima Area: South Side of the Shin-koi-bashi Bridge (east side)

Y Koi Area: South Side of the Shin-koi-bashi Bridge (west side)

**ACCESS:** Get off at Genbaku Dome-mae Streetcar Stop.**INQUIRIES:** *Toro-nagashi* Executive Committee 082-245-1448*Hiroshima Matsuri linkai* 082-247-6805

© Paper lanterns will be floated down the river to console the souls of the deceased. Lantern (¥600) will be sold at four places inside the Peace Memorial Park.

**Sat., August 19 – Sun., August 27****The 29<sup>th</sup> Affinis Music Festival 2017 in Hiroshima**アフィニス なつ おんがくさい ひろしま夏の音楽祭 2017広島**VENUE:** JMS Aster Plaza, Kako-machi, Naka-ku**ACCESS:** Take the No. 24 bus and get off at Kako-machi. Walking time to destination: 2 minutes**SCHEDULE:**μ **Chamber Music Concerts****DATE & TIME:** Aug. 22 – 24, 7:00 pm (Doors will open at 6:30 pm.)μ **The 29<sup>th</sup> Affinis Music Festival Orchestra Grand Concert****DATE & TME:** Aug. 27, 3:00 pm (Doors will open at 2:00 pm.)μ **Promenade Concerts****DATE & TME:** Aug. 22 – 24, 5:30 pm

Please feel free to contact the International Exchange Lounge at 082-247-9715.

E-mail: [golounge@pcf.city.hiroshima.jp](mailto:golounge@pcf.city.hiroshima.jp)

August 2017

## μ Seminars

**DATE & TME:** Aug. 19 – 23 & 25    - Some seminars are not open to public.

## μ Cultural Programs for Citizens    2 Free admission program

### a Lunchtime Concerts

**DATE & TME:** Aug. 19 – 22, 12:30 pm

### a Mini Concerts

**DATE & TME:** ☒ Aug. 20, 7:00 pm    • Aug. 21, 7:00 pm

**VENUES:** ☒ Aug. 20: Lobby, RIHGA Royal Hotel Hiroshima

• Aug. 21: Formerly the Bank of Japan Hiroshima Branch

### a AIUE Orchestra

**DATE & TME:** Aug. 26, 3:00 pm

⌋ This is an orchestra concert for elementary school students. Although admission is free, numbered ticket will be required. Applications for the numbered tickets will be accepted from Jul. 1 to Jul. 31.

### a AIUE Music Lesson

**DATE & TME:** Aug. 26, 1:30 pm

⌋ Participants will be selected from the participants of AIUE Orchestra.

### a Minna de Orchestral

**DATE & TME:** Aug. 24, 4:00 pm

⌋ This is a participatory orchestra to commemorate the finale of the festival in Hiroshima. Please check the website for more information.

## TICKETS:

✓ **Seminar:** One day pass-¥500    All program pass-¥1,000

⌋ You can attend seminars with concert tickets.

✓ **Chamber Music Concert:** Adults-¥2,500    Students-¥1,000 (all non-reserved seats)

2 Student tickets are only sold at JMS Aster Plaza and Kumin Bunka Centers and the Hiroshima Symphony Orchestra Office.

✓ **Grand Concert:** S-¥5,200    A-¥4,200    B-¥3,200    Students-¥1,500

2 B seat tickets are not sold at JMS Aster Plaza and Kumin Bunka Centers

2 Student tickets are only sold at the Hiroshima Symphony Orchestra office.

**TICKET SALE DATE:** Now on sale

**TICKET OFFICES:** EDION Hiroshima (SUNMALL, 1F), YAMAHA Music, Fukuya Department Stores (Hatchobori and Hiroshima Station), *Alpark* Tenmaya, JMS Aster Plaza, Kumin Bunka Centers, Hiroshima Symphony Orchestra Office & Chugoku Shimbun

## INQUIRIES:

✓ About the Music Festival: Affinis Arts Foundation

03-5797-7135    E-mail: info@affinis.or.jp    HP: http://www.affinis.or.jp/

✓ About the Cultural Programs: Hiroshima City Bunka Zaidan

082-244-0750    E-mail: bunka@cf.city.hiroshima.jp    HP: http://affinis-hiroshima.com/

✓ About the Grand Concert: Hiroshima Symphony Orchestra Office

082-532-3080    E-mail: info@hirokyo.or.jp    HP: http://hirokyo.or.jp/

**Sat., October 28**

## 2017 Autumn Sumo Tour in Hiroshima (*Ozumo Aki Basho*)

おおずもうあきばしよ  
大相撲安芸場所

**TIME:** 8:00 am – 3:00 pm

**VENUE:** Hiroshima Sun Plaza Hall, Nishi-ku

**ACCESS:** From JR Shin Inokuchi Station (JR Sanyo Line) or Shoko Center Iriguchi Streetcar Stop (Hiroden Miyajima Line), walking time to destination is 5 minutes.

Please feel free to contact the International Exchange Lounge at 082-247-9715.

E-mail: golounge@pcf.city.hiroshima.jp

August 2017

**TICKETS:**1<sup>st</sup> Floor

| "Tamari" Seats (ringside): S\* - ¥14,000/person    A\* - ¥13,000/person    B\* - ¥12,000/person  
 | Chair Seats: C - ¥9,000/person    D - ¥8,000/person

<Seats with "\*" > You can take a special sumo cushion home as a souvenir.

2<sup>nd</sup> Floor (all non-reserved seats)

| Chair Seats - ¥5,000/person    | Wheelchair Seatings: ¥20,000 (two seats)

**HOW TO ORDER TICKETS:**

Ticket orders will be accepted by e-mail, fax or *ofuku hagaki* (return postcard). Please see the website (<http://www.sumoaki-hiroshima.com/>) for more information. A lottery may be held if there are more applicants than tickets available.

<sup>2</sup> You can order a *bento* (lunch box; ¥2,000) with tea as well.

<sup>2</sup> You may not be allowed to bring any food or drink to the venue other than this *bento*.

**INQUIRIES:** *Ozumo Aki Basho* Office    082-292-5559    HP: <http://www.sumoaki-hiroshima.com/>

**Fri., November 3**

**The 37<sup>th</sup> Hiroshima International Peace Marathon**

だい かい ひろしま こくさいへいわ  
**第37回 ひろしま 国際 平和 マラソン**

**TIME:** ® Opening ceremony – 9:45 am    ® Start – 10:55 am

**COURSES:** ® Kids course (1km)    ® Beginners course (5km)

® Challenge course (10km)    ® Wheelchair course (5km)

**STARTING PLACE:** In front of Hiroshima Diamond Hotel, Kanon-shinmachi, Nishi-ku, Hiroshima City

**ACCESS:** Take a bus bound for Hiroshima Heliport or Marina Hop and get off at Nishi Zeimusho-iriguchi.

Walking time to destination: 5 minutes.

**ELIGIBILITY:** Elementary school students and up

**PARTICIPATION FEE:** ¥600 – ¥3,500

**HOW TO PARTICIPATE:** Enrollment will be accepted online from Wed., August 16 to Fri., September 8.

<sup>2</sup> Enrollment will be closed when all 12,000 spots are full (challenge course: the first 5,000 spots).

**INQUIRIES:** Executive Committee    082-234-4679 (Mon. – Fri., 9:30 am – 5:30 pm)

HP: <http://www.hiroshima-marathon.com>

© Elementary school students should be accompanied by their guardians.

**Events Held on Miyajima**

**Tue., August 8**

**Miyajima Kangen-sai Festival**

かんげんさい  
管絃祭



**TIME:** From 3:00 pm onward

**PLACE:** Itsukushima Shrine and other shrines on Miyajima

**ACCESS:** Get off at JR Miyajima-guchi Station (JR Sanyo Line) or the Miyajima Streetcar Stop (Hiroden Streetcar Miyajima Line), then take a ferry to Miyajima.

**FEE:** Admission fee for Itsukushima Shrine

( Adults & University students-¥300    High school students-¥200 )

( Junior high school & Elementary school students-¥100 )

**INQUIRIES:** Itsukushima Shrine    0829-44-2020

© The *Kangen-sai* Festival began in the Heian Era (A.D.794 – A.D.1185). *Kangen* is traditional Japanese music played with *San-kan* (three flutes), *San-ko* (three drums) and *San-gen* (three strings). The *Kangen-bune* boat cruises while musicians on-board play this unique music through Otorii Gate to the Jigozen Shrine located on the opposite bank. It then proceeds to Nagahama and Omoto Shrines on Miyajima Island and returns to Itsukushima Shrine. Itsukushima *Kangen-sai* Festival is one of the three largest boat festivals in Japan.

Please feel free to contact the International Exchange Lounge at 082-247-9715.

E-mail: [golounge@pcf.city.hiroshima.jp](mailto:golounge@pcf.city.hiroshima.jp)

August 2017

**Tue., August 8****Lantern Parade in Miyajima** ちょうちんぎょうれつ行列**TIME:** From 7:30 pm onward**PLACE:** Lanterns will be given out for free in front of Nagahama Shrine.**ACCESS:** Get off at JR Miyajima-guchi Station (JR Sanyo Line) or the Miyajima Streetcar Stop (Hiroden Streetcar Miyajima Line), then take a ferry to Miyajima.**INQUIRIES:** *Miyajima Kanko Kyokai* (Tourist Association) 0829-44-2011

© This parade uses lanterns to welcome the *Kangen-bune* boat to Nagahama Shrine on its return from Jigozen Shrine. After the boat reaches Nagahama Shrine, participants will parade towards Itsukushima Shrine.

**Thurs., August 10****Shiman Hassen-nichi (48,000-day) Kannon Festival** しまんはっせんにちかんのんたいさい 四万八千日 観音 大祭**TIME:** From 10:00 am onward**PLACE:** Daishoin Temple, Miyajima**ACCESS:** Get off at JR Miyajima-guchi Station (JR Sanyo Line) or the Miyajima Streetcar Stop (Hiroden Streetcar Miyajima Line), then take a ferry to Miyajima.**INQUIRIES:** Daishoin Temple 0829-44-0111

© A ritual for Kannon, one of the most popular Buddhist Gods in Japan, will be held. It is said that a visit to the temple on this day gives you merit for 48,000 days.

**Thurs., August 17 & Fri., August 18****Miyajima Odori (Dance) Festival** みやじまおど ゆう 宮島 踊りの夕べ**TIME:** From 7:30 pm onward**PLACE:** Mikasa-no-hama Beach (In front of Itsukushima Shrine, Miyajima)**ACCESS:** Get off at JR Miyajima-guchi Station (JR Sanyo Line) or the Miyajima Streetcar Stop (Hiroden Streetcar Miyajima Line), then take a ferry to Miyajima.**INQUIRIES:** *Miyajima Geino Hozon-kai* Office 0829-44-0757

© Miyajima Odori is a type of traditional Japanese *bon* dance that originated about 500 years ago to console the souls of the pirates that sank to the bottom of the Seto Inland Sea.

**Thurs., August 24****Kinseki Jizoson-sai Festival** きんせきじぞうそんさい 金石地蔵尊祭**PLACE:** Tokuju-ji Temple, Miyajima**ACCESS:** Get off at JR Miyajima-guchi Station (JR Sanyo Line) or the Miyajima Streetcar Stop (Hiroden Streetcar Miyajima Line), then take a ferry to Miyajima.**INQUIRIES:** Tokuju-ji Temple 090-5261-8153

© *Kinseki Jizoson*, a guardian deity of children, is famous for having babies. This *jizo* is opened to the public only once a year on this day.

**Sat., August 26****The 45<sup>th</sup> Miyajima Fireworks Festival** だい かいみやじますいちゅうはなびたいかい 第45回 宮島 水中 花火 大会**TIME:** 7:40 pm – 8:40 pm**PLACE:** Offshore, near the floating *Torii* gate on Miyajima**ACCESS:** Get off at JR Miyajima-guchi Station (JR Sanyo Line) or the Miyajima Streetcar Stop (Hiroden Streetcar Miyajima Line), then take a ferry to Miyajima.

Please feel free to contact the International Exchange Lounge at 082-247-9715.

E-mail: [golounge@pcf.city.hiroshima.jp](mailto:golounge@pcf.city.hiroshima.jp)

August 2017

**INQUIRIES:** *Miyajima Kanko Kyokai* (Tourist Association) 0829-44-2011

© The fireworks will be postponed until Sat., September 2 if it rains heavily on the 26<sup>th</sup>.

**Sun., August 27**

### Tamatorisai Festival たまとりさい 玉取祭

**TIME:** *Tamatorisai* will start at high tide (around 9:00 am).

N A ritual will be held before *Tamatorisai* (from 8:30 am).

**PLACE:** Itsukushima Shrine, Miyajima

**ACCESS:** Get off at JR Miyajima-guchi Station (JR Sanyo Line) or the Miyajima Streetcar Stop (Hiroden Streetcar Miyajima Line), then take a ferry to Miyajima.

**INQUIRIES:** Itsukushima Shrine 0829-44-2020

© Young men from Miyajima-cho will fight for a precious good luck stone which is hanging from a tower erected in the sea. This high-spirited festival takes place in front of the floating *Torii* gate.

**Fri., September 8 – Sun., September 10**

### Miyajima Candle Festival, Mantōe みやじま 宮島 ローソクまつり 萬燈会 まんとうえ

**TIME:** 6:00 pm – 9:00 pm

**PLACE:** Daishoin Temple, Miyajima

**ACCESS:** Get off at JR Miyajima-guchi Station (JR Sanyo Line) or Miyajima Streetcar Stop (Hiroden Streetcar Miyajima Line), then take a ferry to Miyajima.

**ADMISSION FEE:** Free

**INQUIRIES:** Daishoin Temple 0829-44-0111

© Many candles will be lit to console the souls of the deceased. A ritual will be held from 6:00 pm on the 8<sup>th</sup> and concerts will be held for world peace from 7:00 pm on the 8<sup>th</sup> and from 6:00 pm on the 9<sup>th</sup> and the 10<sup>th</sup>.



## Events Held Outside of Hiroshima City

**Sat., Sun. & national holidays**

### Sake Brewery Opening しょうかまちさいじょう ようこそ 醸華町西条

**PLACE:** Sake Breweries, Higashihiroshima City

**ACCESS:** Get off at JR Saijo Station (JR Sanyo Line).

**FEE:** Free

**INQUIRIES:** *Saijo Sakagura-dori Kanko Annai-jo*

Tel. & Fax 082-421-2511 (10:00am – 4:00pm, closed on Mondays)

© Some sake breweries open to the public on Sat., Sun. & national holidays. Signboards with the words “ようこそ 醸華町西条” (“*Yokoso Jokamachi Saijo*”) will be placed in front of the opened breweries.

**Thurs., June 1 – Sun., September 10**

### Cormorant Fishing in Miyoshi みよし 三次の うかい 鵜飼

**TIME:** From 7:30 pm onward (Cruising will be canceled if it rains heavily.)

<sup>2</sup> Please come to the reception by 7:00pm.

**PLACE:** *Tokaichi Shinsui Koen* (Park), Miyoshi City

**ACCESS:** From JR Miyoshi Station (JR Geibi Line), walking time to destination is 15 minutes.

Please feel free to contact the International Exchange Lounge at 082-247-9715.

E-mail: [golounge@pcf.city.hiroshima.jp](mailto:golounge@pcf.city.hiroshima.jp)

August 2017

**PASSENGER FARE:**® Sunday – Thursday:

- Regular fare: Junior high school students and up-¥3,000 Elementary school students-¥1,500
- Fare with a chair: Junior high school students and up-¥3,500 Elementary school students-¥1,750

® Friday & Saturday:

- Regular fare: Junior high school students and up-¥3,300 Elementary school students-¥1,650
- Fare with a chair: Junior high school students and up-¥3,800 Elementary school students-¥1,900

<sup>2</sup> Please note that reservations are required. Reservations are accepted until 5:00 pm on the day before the day you want to go.

<sup>2</sup> Reservations will not be accepted on August 19 (Miyoshi fireworks festival).

**RESERVATIONS & INQUIRIES:** *Miyoshi City Kanko Kyokai* (Tourist Association)

0824-63-9268 E-mail: miyo-344@bz01.plala.or.jp

© Fishermen start out at night with lanterns and cormorants on small wooden boats. The birds are trained to catch *Ayu* (sweetfish). Very unique white-colored cormorants (a type of water fowl, usually with black feathers) were donated by Yaan in Szechuan, China, Miyoshi's friendship city, and can be seen only in Miyoshi.

**Sat., August 5 & Sun., August 6****Takehara Sumiyoshi Festival** たけはらすみよし  
竹原 住吉まつり

**PLACE:** Around Sumiyoshi Shrine and Kake-machi Shopping Street, Takehara City

**ACCESS:** From JR Takehara Station (JR Kure Line), walking time to destination is 10 minutes.

**INQUIRIES:** Executive Committee 0846-22-0298

© This is a traditional summer festival in Takehara City that has been observed since the Edo period.

**Thurs., August 10****Sakagura Walking Tour (Free)** さかぐら  
酒蔵のまち てくてくガイド

**TIME:** Tour will start on an as-needed basis between 10:00 am and 11:00 am.

**MEETING PLACE:** *Saijo Sakagura-dori Kanko Annai-jo* (Tourist Information Center), Higashihiroshima City

**ACCESS:** Get off at JR Saijo Station (JR Sanyo Line).

**PARTICIPATION FEE:** Free

**INQUIRIES:** *Saijo Sakagura-dori Kanko Annai-jo* Tel. & Fax 082-421-2511

© A volunteer guide will show you *Sakagura-dori* (Sake Brewery Street). During the tour you will be able to taste sake and the purified water that is used to make it.

© A regular guided tour (fee-based) is also held every day except on the 10<sup>th</sup>. Advance reservations are required by a week before the day you wish to visit. An English speaking guide is available. Please contact the *Saijo Sakagura-dori* Tourist Information Center in advance.

**August 11 (Fri.), 12 (Sat.), 13 (Sun.) & 14 (Mon.)****Onomichi Antique Market** おのみちだいこつどうさい  
尾道大骨董祭

**TIME:** 8:00 am – 4:00 pm <sup>2</sup> 8:00 am – noon on Monday

**PLACE:** *Tennen Onsen Onomichi Fureai no Sato* (spa facilities), Mitsugi-cho, Onomichi City

**ACCESS:** • From JR Shin-Onomichi Station (JR Sanyo *Shinkansen* Line), driving time by taxi to destination is 25 minutes.

, From Onomichi-kita I.C. on the Chugoku Yamanami Expressway, driving time to destination is 10 minutes.

f Take a free shuttle bus to the spa from JR Higashi Onomichi Station (JR Sanyo Line).

Departure Time (one round service a day)

- JR Higashi Onomichi Station: 8:55 am - Spa: 3:10 pm

**INQUIRIES:** *Iroha* Antique Market Office 090-3155-8229

Please feel free to contact the International Exchange Lounge at 082-247-9715.

E-mail: golounge@pcf.city.hiroshima.jp

August 2017

**Fri., August 11 – Sun., August 13****The 42<sup>nd</sup> Mihara Yassa Festival** だい かいみはら まつり  
**第42回三原 やっさ 祭り****SCHEDULE:** ⑧ the 11<sup>th</sup> & the 12<sup>th</sup>: Events & Yassa Dance Performance⑧ the 13<sup>th</sup>: Events & Fireworks Festival (8:00 pm – 8:45 pm)**PLACE:** Events & Dance performance Around the south exit of JR Mihara Station (JR Sanyo Line),  
Mihara City

Fireworks Festival Around Itozaki Port, Mihara City

**ACCESS:** Events & Dance performance Get off at JR Mihara Station (JR Sanyo Line)Fireworks Festival From JR Itozaki Station (JR Sanyo Line), walking time to destination is  
10 minutes.**INQUIRIES:** Mihara Yassa Festival Executive Committee 0848-62-6155

© This is one of the biggest summer festivals in Hiroshima.

© The fireworks will be canceled if it rains heavily on the 13<sup>th</sup>.**Sat., August 12****Yoshiwa Summer Festival** よしわなつ  
**吉和夏まつり****TIME:** ☐ Daytime Event: 11:00 am – 2:00 pm☑ Nighttime Event: 5:30 pm – 9:30 pm (Fireworks: from 9:00 pm onward)**PLACE:** ☐ Daytime Event: *Shinsui Koen* (park) and Sunflower Field, Yoshiwa, Hatsukaichi City☑ Nighttime Event: Yoshiwa Ground, Yoshiwa, Hatsukaichi City

○ Stage events will be held at Yoshiwa Fukushi Center if it rains heavily.

**ACCESS:** From the Yoshiwa I.C. on the Chugoku Expressway, driving time to destination is 5 minutes.**INQUIRIES:** Executive Committee 0829-77-2404

Hatsukaichi City Hall, Yoshiwa Branch 0829-77-2111

© A *Kagura* (traditional dance) performance and fireworks festival will be held at night.

© Daytime events will be canceled if the river condition is not good.

© Fireworks will be postponed until Sun., August 13 if it rains heavily on the 12<sup>th</sup>.**Sat., August 12****Tojo Yuka-sai & Fireworks Festival** とうじょう ゆうがさい  
**東城「遊夏祭」****TIME:** 5:00 pm – 9:00 pm (Fireworks: 8:30 pm – 9:00 pm)**PLACE:** *Tojo Shogakko* (elementary school), Shobara City**ACCESS:** j From JR Tojo Station (JR Geibi Line), walking time to destination is 10 minutes.

k From the Tojo I.C. on the Chugoku Expressway, driving time to destination is 2 minutes.

**INQUIRIES:** Executive Committee 08477-2-0525© The fireworks will be canceled if it rains heavily on the 12<sup>th</sup>.**Sun., August 13 – Tue., August 15****Fukuyama Summer Festival 2017** ふくやまなつ  
**福山夏まつり 2017****TIME:** Aug. 13: *Niagari-odori*, dance performance: 6:20 pm – 9:00 pmAug. 14: *Iroha-maru YOSAKOI* dance performance: 4:00 pm – 8:30 pm

Aug. 15: Fireworks festival: 7:30 pm – 8:45 pm

**PLACE:** *Chuo Koen* (park), Shopping Street, Ashida-gawa Bridge (fireworks festival), Fukuyama City**ACCESS:** From JR Fukuyama Station (JR Sanyo Line), walking time to destination is 10 minutes.**INQUIRIES:** Fukuyama *Matsuri* Committee Office 084-944-5515© There will be a performance of *Niagari-odori*, a traditional dance handed down from the Edo period and designated as an intangible folklore cultural asset of Hiroshima Prefecture.© A fireworks festival will be held on the 15<sup>th</sup>. Please see “Ashida-gawa Fireworks Festival” on the next page for more information.

Please feel free to contact the International Exchange Lounge at 082-247-9715.

E-mail: [golounge@pcf.city.hiroshima.jp](mailto:golounge@pcf.city.hiroshima.jp)

August 2017



**Mon., August 14****Osaki-kamijima Summer Festival** おおさきかみじま  
**大崎上島サマーフェスティバル****TIME:** 1:00 pm – 8:20 pm (Fireworks: 8:00 pm – 8:20 pm)**PLACE:** Okushi Beach & Campground, Osaki-kamijima-cho**ACCESS:** Take a bus from JR Takehara Station (JR Kure Line) and get off at Takehara Port. Then take a ferry for Shiromizu or Tarumi Port. Driving time to destination: 20 minutes**INQUIRIES:** Osaki Kamijima Tourist Information Center 0846-65-3455 (9:00 am – 6:00 pm)

© Please bear in mind that the last ferry to Takehara Port will depart at 9:05 pm from Tarumi Port.

© This will be canceled if it rains on the day.

**Tue., August 15****Fukuyama Summer Festival 2017: Ashida-gawa Fireworks Festival**ふくやまなつ  
**福山夏まつり 2017 : あしだ川花火大会** がわはなびたいかい**TIME:** 7:30 pm – 8:45 pm**PLACE:** Around Ashida-gawa River, Fukuyama City**ACCESS:** Take a bus bound for the venue from JR Fukuyama Station (JR Sanyo Line).**INQUIRIES:** Fukuyama *Matsuri* Committee 084-944-5515© The fireworks will be postponed until Wed., August 16 if it rains heavily on the 15<sup>th</sup>.**Tue., August 15****Horaku-odori (dance) Festival** ほうらくおど  
**法楽踊り****TIME:** 4:00 pm – 5:00 pm**PLACE:** Innoshima-mukunoura-cho, Onomichi City**ACCESS:** From the Innoshima-kita I.C. on the Shimanami Kaido Expressway, driving time to destination is 20 minutes.**INQUIRIES:** *Innoshima Kanko Kyokai* (Tourist Association) 0845-26-6111

© This is designated as a Hiroshima Prefecture intangible cultural asset.

**Tue., August 15****The 30<sup>th</sup> Kisa Fureai Festival & Fireworks Festival** だい かい き さ  
**第30回吉舎ふれあい祭** まつ

り

**TIME:** 6:00 pm – 10:00 pm <sup>2</sup> Fireworks festival – from 8:00 pm onward**PLACE:** *Shinsui Koen* (park) (around Miyoshi City Hall, Kisa Branch), Kisa-cho, Miyoshi City**ACCESS:** j From JR Kisa Station (JR Fukuen Line), walking time to destination is 10 minutes.

k From the Kisa I.C. on the Onomichi-Matsue Expressway, driving time to destination is 3 minutes.

**INQUIRIES:** Executive Committee 0824-43-7272

© Paper lanterns will float on Basen-gawa River after sunset and the river will be illuminated with fantastic lights.

© This will be postponed until Wed., August 16 if it rains heavily on the 15<sup>th</sup>.

Please feel free to contact the International Exchange Lounge at 082-247-9715.

E-mail: [golounge@pcf.city.hiroshima.jp](mailto:golounge@pcf.city.hiroshima.jp)

August 2017

**Sat., August 19****The 28<sup>th</sup> Miyoshi Shimin Noryo Fireworks Festival**だい かい しみんのうりょうはなび  
**第28回 みよし市民納涼花火まつり****TIME:** 7:30 pm – 9:00 pm**PLACE:** Downstream of Tomoe-bashi Bridge, Miyoshi City**ACCESS:** j From JR Nishi Miyoshi Station (JR Geibi Line), walking time to destination is 10 minutes.

k From JR Miyoshi Station (JR Geibi Line), walking time to destination is 15 minutes.

l From the Miyoshi I.C. on the Chugoku Expressway, driving time to destination is 15 minutes.

**INQUIRIES:** Miyoshi City Kanko Kyokai (Tourist Association) 0824-63-9268© This will be postponed until Sat., September 2 if it rains heavily on the 19<sup>th</sup>.**Sun., August 20****Hatsuka-no-ichi Market** はつか いち  
廿日の市**TIME:** 8:00 am – 10:00 am**PLACE:** The open Space in front of Hatsukaichi City Hall, Hatsukaichi City**ACCESS:** From Hatsukaichi Shiyakusho-mae (Hiroden Streetcar Miyajima Line), walking time to destination is 5 minutes.**INQUIRIES:** Hatsukaichi Kanko Kyokai (Tourist Association) 0829-31-5656**Sun., August 20****Sera Fireworks Festival** しょうこうさいはなびたいかい  
せら 商工祭花火大会**TIME:** 8:00 pm – 8:30 pm**PLACE:** Around Higashi Kanzaki-chisaki, Sera-cho**ACCESS:** From JR Mihara Station (JR Sanyo Line) or JR Onomichi Station (JR Sanyo Line), driving time to destination is 50 minutes.**INQUIRIES:** Sera-cho Shoko Kai 0847-22-0529© The fireworks festival will be postponed until Mon., August 21 if it rains heavily on the 20<sup>th</sup>.**Sat., August 26****Innoshima Suigun Festival: Hi Matsuri (Fire Festival)** いんのしますいぐん ひ  
因島水軍まつり 火まつり**PLACE:** Shimanami Beach and Innoshima Amenity Park, Innoshima, Onomichi City**ACCESS:** j Take a Flower Liner Express Bus for Innoshima from Hiroshima Bus Center (Sogo Hiroshima Department Store, 3F) and get off at Innoshima Ohashi. Walking time to destination: 10 minutes

k Take a bus bound for Habu Port at JR Onomichi Station (JR Sanyo Line) and get off at Innoshima Ohashi. Walking time to destination: 10 minutes

l From the Innoshima-Kita I.C. on the Shimanami Kaido Expressway, driving time to destination is 10 minutes.

**CONTENT:** Samurai performance, Japanese drum performance, fireworks display, etc.**INQUIRIES:** Innoshima Suigun Festival Executive Committee 0845-26-6212

© Innoshima was one of the fortified trading posts of the Murakami Suigun which did trade with Asian countries and held power over the sea around Japan between the Muromachi period and the Age of Provincial Wars.

© The Umi Matsuri (sea festival) will be held the next day. Please see on the next page for more information.

Please feel free to contact the International Exchange Lounge at 082-247-9715.

E-mail: [golounge@pcf.city.hiroshima.jp](mailto:golounge@pcf.city.hiroshima.jp)

August 2017

**Sat., August 26****Takehara Fireworks Festival** なつ はなびたいかい  
たけはら 夏まつり 花火大会**TIME:** 8:00 pm – 8:30 pm**PLACE:** Offshore from J-POWER Ground, Takehara City**ACCESS:** j From JR Daijo Station (JR Kure Line), walking time to destination is 10 minutes.

k From the Kouchi I.C. on the Chugoku Expressway, driving time to destination is 25 minutes.

**INQUIRIES:** *Takehara City Kanko Kyokai* (Tourist Association) 0846-22-4331© This will be canceled if it rains heavily on the 26<sup>th</sup>.**Sat., August 26****Akitakata Fireworks Festival** あきたかたはなびたいかい  
安芸高田 花火大会**TIME:** From 7:30 pm onward <sup>2</sup> The venue will open at 3:00 pm.**PLACE:** *Nodogoe Koen* (park), Haji, Yachiyo-cho, Akitakata City**ACCESS:** From the Chiyoda I.C. on the Chugoku Expressway, driving time to destination is 15 minutes.**INQUIRIES:** Executive Committee 0826-47-4024© This will be canceled if it rains heavily on the 26<sup>th</sup>.**Sun., August 27****Innoshima Suigun Festival: Umi Matsuri (Sea Festival)** いんのしますいぐん うみ  
因島 水軍まつり 海まつり**PLACE:** Shimanami Beach and Innoshima Amenity Park, Innoshima, Onomichi City**ACCESS:** j Take a Flower Liner Express Bus for Innoshima from Hiroshima Bus Center (Sogo Hiroshima Department Store, 3F) and get off at Innoshima Ohashi. Walking time to destination: 10 minutes

k Take a bus bound for Habu Port at JR Onomichi Station (JR Sanyo Line) and get off at Innoshima Ohashi. Walking time to destination: 10 minutes

l From the Innoshima-Kita I.C. on the Shimanami Kaido Expressway, driving time to destination is 10 minutes.

**CONTENT:** *Kohaya* race (*Kohaya* is a small swift boat which Murakami *Suigun* used in war.), bazaar, etc.**INQUIRIES:** Innoshima *Suigun* Festival Executive Committee 0845-26-6212**Sun., August 27****Shobara Fireworks Festival** しょうばらなつ はなびたいかい  
庄原 夏まつり 花火大会**TIME:** 7:30 pm – 8:30 pm**PLACE:** *Shobara Ueno Koen* (park), Shobara City**ACCESS:** From JR Bingo-shobara Station (JR Geibi Line), walking time to destination is 10 minutes.**INQUIRIES:** *Shobara Kanko Kyokai* (Tourist Association), Shobara Branch 0824-73-0602© The fireworks will be postponed until Mon., August 28 if it rains heavily on the 27<sup>th</sup>.**Sat., September 2****The 35<sup>th</sup> Kimita Kagura Performance** だい かいきみ た きんごう かくら たいかい  
第35回 君田 近郷 神楽大会**TIME:** From 6:00 pm onward**PLACE:** *Oyanagi Bunka Koen* (park), Sunshine Stage, Miyoshi City<sup>2</sup> This will be held inside the Kimita Elementary School Gymnasium if it rains.**ACCESS:** • Take a bus from JR Miyoshi Station (JR Geibi Line) and get off at Yakuba-mae. Walking time to destination: a 5 minutes

, From the Miyoshi I.C. on the Chugoku Expressway, driving time to destination is 20 minutes.

Please feel free to contact the International Exchange Lounge at 082-247-9715.

E-mail: [golounge@pcf.city.hiroshima.jp](mailto:golounge@pcf.city.hiroshima.jp)

August 2017

**INQUIRIES:** *Miyoshi Koiki Shoko Kai*, Kimita Branch 0824-53-2039

**Sat., September 9**

**The 70<sup>th</sup> *Nishi-chugoku Kagura Performance*** だい かいにしちゅうごくせんぱつかくらきょうえん  
**第70回 西中国 選抜 神楽 競演**

たいかい  
**大会**

**TIME:** ① Distribution of numbered tickets: From 8:00 am onward ② Opening of venue: 10:15 am  
 ③ Opening ceremony: From 11:00am onward ④ *Kagura* performance: 11:30 am – 9:30 pm

**PLACE:** *Kake Taiiku-kan* (Gymnasium), Akiota-cho

**ACCESS:** j From the Togouchi I.C. on the Chugoku Expressway, driving time to destination is 10 minutes.  
 k Take a bus bound for Sandankyo (Hiroden Sandankyo Line) from Hiroshima Bus Center (Sogo Hiroshima Department Store, 3F) and get off at Kake Chuo. Walking time to destination: 10 minutes

**TICKET:** Advance-¥2,500 At the door-¥3,000 At the door (after 4:30 pm)-¥2,000  
 2 Junior high school students and under-Free 2 Advance tickets are available at Lawson, *Hiroshima Yume Plaza* on Hondori Shopping Street, Alpark Tenmaya.

**INQUIRIES:** *Akiota-cho Kanko Kyokai* (Tourist Association) 0826-28-1800

**Sat., September 30 & Sun., October 1**

N Application period to participate in the event has already concluded. N

**The 6<sup>th</sup> *Costume Festival in Onomichi*** だい かいぜんこくかそうたいかい  
**第6回 全国 仮装 大会 in おのみち**

**TIME:** ① Sept. 30: 3:00 pm – 7:00 pm ② Oct. 1: 11:00 am – 4:00 pm

**PLACE:** Around *Hondori* Shopping Street, *Kokaido*, etc., Onomichi City

**ACCESS:** From JR Onomichi Station (JR Sanyo Line), walking time to destination is 2 minutes.

**CONTENTS:** Sept. 30 – Pre Event: Costume Party  
 Oct. 1 – Main Event: Costume Parade

**INQUIRIES:** Executive Committee (inside Onomichi Tourist Association) 0848-37-9736

**Sat., November 25 & Sun., November 26**

**The 10<sup>th</sup> *2-Day Hiroshima Peace Walk in Hatsukaichi***

だい かい  
**第10回 ピースウォークひろしまツアー in 廿日市** はつかいち

**COURSE:** ① Nov. 25: Miyajima Course  
 ② Nov. 26: A-bomb Dome and south area of Hiroshima City Course

**STARTING PLACE:** *Shingu Chuo Koen* (park), Hatsukaihi City

**ACCESS:** From Hatsukaichi Shiyakusho-mae Streetcar Stop (Hiroden Miyajima Line), walking time to destination is 4 minutes.

**PARTICIPATION FEE:**

① Fee for 2-Day ①

② Advance application: Adults-¥2,300 Senior & Junior high school students-¥1,300  
 Elementary school students and under-Free

③ Application on the day of: Adults-¥2,500 Senior & Junior high school students-¥1,500  
 Elementary school students and under-Free

① Fee for 1-Day on Nov. 25 ①

② Advance application: Adults-¥1,300 Senior & Junior high school students-¥800  
 Elementary school students and under-Free

③ Application on the day of: Adults-¥1,500 Senior & Junior high school students-¥1,000

① Fee for 1-Day on Nov. 26 ①

② Advance application: Adults-¥1,000 Senior & Junior high school students-¥500  
 Elementary school students and under-Free

③ Application on the day of: Adults-¥1,200 Senior & Junior high school students-¥700

Please feel free to contact the International Exchange Lounge at 082-247-9715.

E-mail: [golounge@pcf.city.hiroshima.jp](mailto:golounge@pcf.city.hiroshima.jp)

August 2017



Elementary school students and under-Free

**HOW TO APPLY:** Fill out prescribed application form and make a payment at a Japan Post Bank (ゆうちょ 銀行) by Fri., November 10. The receipt you receive at the post bank will be the participation certificate on the event day, so please make sure to keep and bring it on the walking day.

**INQUIRIES:** Executive Committee 082-218-0511 or 090-1185-8332  
E-mail: hwa.hiroshima@gmail.com

- ◎ Elementary school students and under should be accompanied by their guardians. People who need care should also be accompanied by their escorts.
- ◎ Please bring lunch and drink with you.

## Events Held in Yamaguchi Prefecture

**Thurs., June 1 – Sun., September 10**

### Cormorant Fishing in Iwakuni きんたいきょう うかい 錦帯橋の鵜飼

**TIME:** 7:00 pm – 9:00 pm

**PLACE:** Nishiki-gawa River & Kintaikyo Bridge, Iwakuni City

**ACCESS:** Get off at JR Iwakuni Station (JR Sanyo Line) and take a bus bound for Kintaikyo Bridge. Get off at Kintaikyo (a 20 min. bus ride).

**PASSENGER FARE:** Adults-¥2,000 Children-¥1,000

<sup>2</sup> The fare will be temporarily changed on August 5, the day of the fireworks festival.

**RESERVATIONS & INQUIRIES:** *Kintaikyo Ukai Office* 0827-28-2877

◎ Originating about 400 years ago, cormorant fishing under lit lanterns is a summer tradition in Iwakuni.

**Sat., August 5 & Sun., August 13** <sup>2</sup> Main event will be held on Aug. 13.

### Yanai Kingyo Chochin (Goldfish Lantern) Festival やないきんぎょ まつ 柳井金魚ちょうちん祭り

**TIME:** ® Aug. 5: 5:30 pm – 9:00 pm ® Aug. 13: 4:30 pm – 9:00 pm

**PLACE:** Around JR Yanai Station (JR Sanyo Line), Yanai City

**ACCESS:** Get off at JR Yanai Station (JR Sanyo Line).

**INQUIRIES:** *Shoko Kanko Ka*, Yanai City Hall 0820-22-2111

◎ Two thousand goldfish-shaped lanterns will be hung up and there will be old-style vendors, creating an Edo Period atmosphere.

◎ Fireworks will go off at the finale (8:45 pm – 9:00 pm) on the 13<sup>th</sup>.

**Sat., August 5**

### Nishiki-gawa River Water Festival にしきがわみず さいてん 錦川水の祭典

**TIME:** ® Festival: 9:00 am – 9:30 pm

® Fireworks Festival: 8:00 pm – 9:30 pm

**PLACE:** Around Kintaikyo Bridge, Iwakuni City

**ACCESS:** Take a bus bound for Kintaikyo Bridge from JR Iwakuni Station (JR Sanyo Line) and get off at Kintaikyo (a 20 min. bus ride). <sup>2</sup> Extra buses will run from the station on the event day.

**INQUIRIES:** *Iwakuni City Kanko Kyokai* (Tourist Association) 0827-41-2037 (8:30 am – 5:15 pm)

◎ The fireworks will be postponed until Sat., August 26 if it rains on the 5<sup>th</sup>.

◎ An *Iwakuni taiko* (traditional Japanese drums) performance will also be held in the evening.



Please feel free to contact the  
E-mail: gol

Exchange Lounge at 082-247-9715.  
.hiroshima.jp

August 2017

# Events Associated with August 6



## Hiroshima Peace Memorial Museum

### © Exhibitions & Events ©

#### ⌘ Special Exhibition: August 6, 1945 – Outline of Atomic Bomb Damage

PERIOD: Wed., April 26, 2017 – Sat., June, 2018

VENUE: Special Exhibition Room, 1<sup>st</sup> Floor, East Building

ADMISSION FEE: Free ⌘ Admission fee is required for the permanent exhibitions on 2F and 3F of the museum (see below).

#### ⌘ Exhibit of a Piece of the A-bombed Layer

PERIOD: Tue., July 11, 2017 – Fri., March 30, 2018

PLACE<sup>®</sup> July 11 – August 16: B1F, East Building<sup>®</sup> From August 17: 1F, East Building

ADMISSION FEE: Free ⌘ Admission fee is required for the permanent exhibitions on 2F and 3F of the museum (see below).

#### ⌘ “A-bomb Drawings by Survivors” in 8K Ultra-high-definition Television

PERIOD & TIME: Tue., August 1 – Wed., August 16

9:00 am – 6:30 pm (9:00 am – 7:30 pm on August 5 & 6)

PLACE: Information Lounge, 1F, East Building

ADMISSION FEE: Free ⌘ Admission fee is required for the permanent exhibitions on 2F and 3F of the museum (see below).

#### ⌘ New Arrivals Exhibit

PERIOD: Thurs., March 16 – Thurs., November 30

PLACE: Temporary Exhibition Room, B1F, East Building

ADMISSION FEE: Free ⌘ Admission fee is required for the permanent exhibitions on 2F and 3F of the museum (see below).

#### ⌘ Museum Collection Exhibition ⌘ Free Admission

PERIOD & TIME: Fri., July 28, 2017 – July, 2018 (tentative) 10:00 am – 5:00 pm

PLACE: *Kyu Nihon Ginko Hiroshima Shiten* (former Bank of Japan, Hiroshima Branch)  
(Fukuro-machi, Naka-ku, Hiroshima City)

ACCESS: Get off at Fukuro-machi Streetcar Stop.

CLOSED: December 29 – January 3

### © Museum General Information ©

ACCESS: From Genbaku Dome-mae (A-Bomb Dome) Streetcar Stop, walking time to destination is 5 minutes.

ADMISSION FEE: University students and up – ¥200 / High school students – ¥100

Junior high school students and under – Free / Seniors (65 years old and up, ID required) – ¥100

MUSEUM OPEN HOURS: ⌘ Entry is allowed 30 min. prior to closing time.

<sup>®</sup> March – July: 8:30 am – 6:00 pm <sup>®</sup> August: 8:30 am – 7:00 pm (Open until 8:00 pm on August 5 & 6)

<sup>®</sup> September – November: 8:30 am – 6:00 pm <sup>®</sup> December – February: 8:30 am – 5:00 pm

CLOSED: December 30 & 31

INQUIRIES: Hiroshima Peace Memorial Museum 082-241-4004 HP: <http://hpmmuseum.jp/?lang=eng>

⌘ The Hiroshima Peace Memorial Museum's Main Building are closed for the renovations until July 2018.  
Currently, the East Building is open to visitors.

## Hiroshima National Peace Memorial Hall for the Atomic Bomb Victims Special Exhibition: “Memoirs of the Atomic Bombing: The Earliest Accounts of the Hiroshima A-bomb Part 2”

PERIOD: Sun., January 1 – Fri., December 29

PLACE: Hiroshima National Peace Memorial Hall for the Atomic Bomb Victims (Inside Peace Memorial Park)

ACCESS: From Genbaku Dome-mae (A-Bomb Dome) Streetcar Stop, walking time to destination is 5 minute.

MUSEUM OPEN HOURS: ⌘ Entry is allowed 30 min. prior to closing time.

<sup>®</sup> March – July: 8:30 am – 6:00 pm <sup>®</sup> August: 8:30 am – 7:00 pm (Open until 8:00 pm on August 5 & 6)

<sup>®</sup> September – November: 8:30 am – 6:00 pm <sup>®</sup> December – February: 8:30 am – 5:00 pm

ADMISSION FEE: Free

CLOSED: December 30 & 31

INQUIRIES: Hiroshima National Peace Memorial Hall for the Atomic Bomb Victims 082-543-6271

HP: <http://www.hiro-tsuitokinenkan.go.jp>

Please feel free to contact the International Exchange Lounge at 082-247-9715

E-mail: [golounge@pcf.city.hiroshima.jp](mailto:golounge@pcf.city.hiroshima.jp)

August 2017

**Orizuru-Art**

PERIOD: Wed., July 19 – Thurs., August 31

PLACE: *Naka-ku Toshokan* (Naka Ward Library; JMS Aster Plaza, 2F) (Kako-machi, Naka-ku, Hiroshima City)

ACCESS: Take a No. 24 bus bound for Yoshijima-eigyō-sho or Yoshijima-byoin and get off at Kako-machi.

OPEN HOURS: ⑧ Tue. – Fri.: 9:00 am – 7:00 pm ⑨ Sat., Sun., national holidays & August 6: 9:00 am – 5:00 pm

CLOSED: Mondays

INQUIRIES: *Naka-ku Toshokan* 082-248-9300

ÿ Fold a paper crane and add it to a panel to make a picture. Anyone who visits the library can join this event.

**Kenya Hara Graphic Design Exhibition** ◯ Free Admission

PERIOD: Mon., July 24 – Sun., August 20

PLACE: Oriental Hotel Hiroshima, 1F, Design Gallery (Tanaka-machi, Naka-ku, Hiroshima City)

ACCESS: From Hatchobori Streetcar stop, walking time to destination is 8 minutes.

OPEN HOURS: 10:30 am – 7:30 pm (10:30 am – 5:00 pm on August 20)

INQUIRIES: Japan Graphic Designers Association, Hiroshima Area 082-879-0535 (d&b, Sekiura Design)

**Hiroshima City Museum of Contemporary Art: Mona Hatoum – the 10<sup>th</sup> Hiroshima Art Prize**

PERIOD: Sat., July 29 – Sun., October 15

PLACE: *Hiroshima-shi Gendai Bijutsu-kan* (Hiroshima City Museum of Contemporary Art)  
(Hijiyama-koen, Minami-ku, Hiroshima City)

ACCESS: j Get off at Hijiyama-shita Streetcar Stop. Then, go through Hijiyama Tunnel and take the Hijiyama Skywalk from Hiroshima Danbara Shopping Center.

k Get on the Hiroshima Sightseeing Loop Bus, “*Hiroshima meipuru~pu*”, from the center of Hiroshima City and get off at the museum.

OPEN HOURS: 10:00 am – 5:00 pm (entry allowed up to 4:30 pm)

ADMISSION FEE: Adults – ¥1,030 (¥820), University students – ¥720 (¥620), Seniors (65 years old and up) & High school students – ¥510 (¥410), Junior high school students & under – Free

◊ Advance ticket prices shown in ( ).

CLOSED: Mondays except national holidays

INQUIRIES: Hiroshima City Museum of Contemporary Art 082-264-1121 HP: <http://www.hiroshima-moca.jp>

**The 21<sup>st</sup> Peace Art Exhibition: Peace Collection** ◯ Free Admission

PERIOD: Wed., August 2 – Sun., August 20

PLACE: Hatsukaichi Bijutsu Gallery (inside Hatsukaichi Bunka Hall Sakurapia, Hatsukaichi City)

ACCESS: From Hatsukaichi Shiyakusho-mae Streetcar stop, walking time to destination is 7 minutes.

OPEN HOURS: 10:00 am – 6:00 pm ◯ Entry allowed up to 5:30 pm

CLOSED: Mondays

INQUIRIES: Hatsukaichi Bijutsu Gallery 0829-20-0222

**Hiroshima Symphony Orchestra: An Evening of Peace Concert stage 1**

DATE & TIME: Sat., August 5 From 3:00 pm onward (doors will open at 2:00 pm.)

VENUE: Hiroshima Bunka Gakuen HBG Hall (Kako-machi, Naka-ku, Hiroshima City)

ACCESS: Take a No. 24 bus bound for Yoshijima-eigyō-sho or Yoshijima-byoin and get off at Kako-machi.

TICKETS: S – ¥5,000 A – ¥4,000 Students – ¥2,000

TICKET OFFECES: EDION Hiroshima (SUNMALL, 1F), Fukuya Department Store (Hatchobori & Hiroshima Station), Alpark Tenmaya, Hiroshima Arts Gakki, YAMAHA Hiroshima, Lawson, Ticket PIA, Chugoku Shimbun, JMS Aster Plaza, Hiroshima Symphony Orchestra Office  
≥ Student tickets are only sold at the Hiroshima Symphony Orchestra Office.

PROGRAM: j R. Strauss: Tod und Verklärung Op. 24

j Brahms: Piano Concerto No. 1 in D minor Op. 15

INQUIRIES: Hiroshima Symphony Orchestra Office 082-532-3080 E-mail: [info@hirokyo.or.jp](mailto:info@hirokyo.or.jp)

ÿ Conductor: Tatsuya Shimono / Piano: Peter Serkin

ÿ The stage 2 of this peace concert will be held on Mon., February 12, 2018.

Please feel free to contact the International Exchange Lounge at 082-247-9715

E-mail: [golounge@pcf.city.hiroshima.jp](mailto:golounge@pcf.city.hiroshima.jp)

August 2017

**Recitation of Stories of the Atomic Bombing in English** ♪ No reservation required / Free admission

DATE &amp; TIME: Sat., August 5 &amp; Sun., August 6 2:00 pm – 2:40 pm

VENUE: *Genbaku Shibotsusha Tsuito Heiwa Kinen Kan* (Hiroshima National Peace Memorial Hall for the Atomic Bomb Victims; inside Peace Memorial Park), BF1, Seminar Room

ACCESS: From Genbaku Dome-mae (A-Bomb Dome) Streetcar Stop, walking time to destination is 5 minutes.

INQUIRIES: Hiroshima National Peace Memorial Hall for the Atomic Bomb Victims 082-543-6271

**RERF (Radiation Effects Research Foundation) Laboratory Open House 2017**

DATE &amp; TIME: Sat., August 5 &amp; Sun., August 6 9:00 am – 4:00 pm (entry allowed up to 3:30 pm)

PLACE: *Hoshasen Eikyo Kenkyujo* (Radiation Effects Research Foundation) (5-2Hijiyama-koen, Minami-ku, Hiroshima City)

ACCESS: Get off at Hijiyama-shita Streetcar Stop. Then, go through Hijiyama Tunnel and take the Hijiyama Skywalk from Hiroshima Danbara Shopping Center. Walking time to destination: 10 minutes.

♪ Free shuttle bus service every 15 min. will be available from Bus Stop #21 in front of Hiroshima-higashi Post Office located next to JR Hiroshima Station (south exit side)

**CONTENTS:**

⊕ Special Exhibit: A scrapbook tells a story to the world: "Hiroshima Diary"

⊕ Extracurricular Lesson (lecture in Japanese only)

| "School Visit Program" is designed to provide an understandable explanation of radiation.

DATE &amp; TIME: Sat., August 5 1:30 pm – 2:30 pm

LECTURER: Ms. Reiko Horimukai, Public Relations &amp; Publications Office, RERF

⊕ Special Lecture (lecture in Japanese only)

| ABCC-RERF 70<sup>th</sup> anniversary program: ABCC/RERF research and your everyday life

DATE &amp; TIME: Sun., August 6 1:30 pm – 2:30 pm

SPEAKER: Dr. Ohtsura Niwa, RERF Chairman

⊕ Science Corner

| Liquid nitrogen: What is the world of -196 °C like? | Extracting DNA

| Compare cancer tissues and normal tissues through a microscope | Use laboratory instruments

| Separate colors used in black non-permanent markers with paper

⊕ Hands-on Exhibit

INQUIRIES: RERF Open House Working Committee 082-261-3131 HP: <http://www.rerf.jp/>**Exhibition on Streetcar Exposed to the A-bomb**

DATE &amp; TIME: August 5 (Sat.), 6 (Sun.) &amp; 19 (Sat.) • 11:00 am – noon , 1:30 pm – 3:00 pm

PLACE: Numaji Transportation Museum (Chorakuji, Asaminami-ku, Hiroshima City)

ACCESS: From Chorakuji *Astramline* Station, walking time to destination is 5 minutes.

INQUIRIES: Numaji Transportation Museum 082-878-6211

♪ Exhibition will be canceled if it is bad weather.

**Hiroshima "Kagari-bi" (bonfire) Ceremony**

DATE &amp; TIME: Sat., August 5 5:00 pm – 10:00 pm

PLACE: *Shinsui* Terrace near the A-bomb Dome (inside Peace Memorial Park)

ACCESS: From Genbaku Dome-mae (A-Bomb Dome) Streetcar Stop, walking time to destination is 3 minutes.

INQUIRIES: Executive Committee 090-3375-2736

**An Evening of Prayer and Peace at Futaba-no-sato**

DATE: Sat., August 5

PLACE: Around the north area of JR Hiroshima Station, "Eki-kita" and seven shrines and temples around JR Hiroshima Station Shinkansen Exit; Nigitsu Shrine, Myojo-in, Tsuruhane Shrine, Hiroshima Toshogu, Onaga Tenmangu, Kokuzen-ji Temple &amp; Shoko-ji Temple (Higashi-ku, Hiroshima City)

ACCESS: Get off at JR Hiroshima Station.

INQUIRIES: *Chiiki Okoshi Suishin Ka*, Higashi Ward Office 082-568-7705

♪ This is a peace event to console the souls of A-bomb victims and pray for peace by lighting one thousand candles which are set around the seven shrines and temples.

Please feel free to contact the International Exchange Lounge at 082-247-9715

E-mail: [golounge@pcf.city.hiroshima.jp](mailto:golounge@pcf.city.hiroshima.jp)

August 2017



**Portraits of A-bomb Survivors Exhibition****DATE:** Sat., August 5**PLACE:** Rihga Royal Hotel Hiroshima (Moto-machi, Naka-ku, Hiroshima City)**ACCESS:** From Kamiya-cho-nishi or Kamiya-cho-higashi streetcar stops, walking time to destination is 3 minutes.**INQUIRIES:** Hiroshima City University 082-830-1764**The 4<sup>th</sup> Hiroshima – Iran Love & Peace Film Festival**

ÿ Please check the official website for the screening schedule.

URL: <http://www.a-sia.com/hilpff/> ○ Japanese only**☒ Hatchoza****PERIOD:** Sat., August 5 – Fri., August 11**TIME:** From 7:00 pm onward**VENUE:** Hatchoza (Fukuya Department Store, 8F, Ebisu-cho, Naka-ku, Hiroshima City)**ACCESS:** Get off at Hatchobori Streetcar Stop.• **Hiroshima Prefectural Art Museum****PERIOD:** Sat., August 5 – Tue., August 8**TIME:** • 1:00 pm , 3:00 pm ƒ 5:00 pm**VENUE:** Hiroshima Prefectural Art Museum (Kami-nobori-machi, Naka-ku, Hiroshima City)**ACCESS:** From Shukkeien-mae Streetcar Stop, walking time to destination is 3 minutes.**TICKETS:** Advance – ¥1,200 At the door – ¥1,500 Tickets for 7 films – ¥7,000

○ Advance tickets are sold at Hatchoza, Salon Cinema and major ticket offices in Hiroshima City.

○ Tickets at the door and for 7 films are only sold at the Hatchoza.

**INQUIRIES:** NPO Moct 082-223-0790 URL: <http://www.moct.jp/>**The 72<sup>nd</sup> Peace Memorial Ceremony****DATE & TIME:** Sun., August 6 8:00 am – 8:45 am**PLACE:** In front of the Cenotaph for the A-Bomb Victims, Peace Memorial Park**ACCESS:** From Genbaku Dome-mae (A-Bomb Dome) Streetcar Stop, walking time to destination is 5 minutes.**INQUIRIES:** *Shimin Katsudo Suishin Ka* (Citizens Activities Promotion Division), The City of Hiroshima  
082-504-2103ÿ On August 6<sup>th</sup>, at 8:15am, at the sound of the bell rung by a representative from the bereaved families and youth representative, a moment of silence is observed for the deceased. At that moment, factory sirens as well as temple and church bells are rung throughout the city, and Hiroshima is deeply wrapped in prayer. The Mayor of Hiroshima delivers a peace declaration addressed to the whole world at the ceremony. On this day, people recall what happened on August 6<sup>th</sup>, 1945, and in their prayers, ponder the meaning of peace.**Sharing the Spirit of Hiroshima with the World 2017: A Peace & Culture Event Featuring Our Youth****DATE & TIME:** Sun., August 6 9:00 am – 5:00 pm**VENUE:** *Hiroshima Kokusai Kaigijo* (International Conference Center Hiroshima; inside Peace Memorial Park)**ACCESS:** From Genbaku Dome-mae (A-Bomb Dome) Streetcar Stop, walking time to destination is 5 minutes.**ADMISSION FEE:** Free**PROGRAMS:**j **Program 1 (Phoenix Hall, BF1):**

10:00 am – noon

**Children's Peace Assembly: A Message from Children in Hiroshima**

2:00 pm – 3:00 pm

**Peace and A-bomb themed play by the Funairi High School Drama Club:  
"The Vision of One Flower" by Tamiki Hara and adapted for the stage by  
Yukihiko Suzuki**j **Program 2 (Himawari Room, BF2):**

1:00 pm – 5:00 pm

**International youth Conference for Peace in the Future, Hiroshima 2017**j **Program 3 (Dahlia Room, BF2):**

9:00 am – 11:00 am

**Tea Ceremony conducted by the Ueda School  
Green tea will be provided free of charge.**

Please feel free to contact the International Exchange Lounge at 082-247-9715

E-mail: [golounge@pcf.city.hiroshima.jp](mailto:golounge@pcf.city.hiroshima.jp)

August 2017

10:00 am – 1:00 pm **Paper Crane Class** – Fold your own special paper crane.  
**Peace Message Picture Postcards** – Make a postcard with your own peace message.

2:00 pm – 3:30 pm **Animation Workshop**

3:30 pm – 4:30 pm **Screening of independent animation on peace and Hiroshima**

Program 4 (Cosmos Room, BF2):

**A-bomb Survivor's Testimony** ☺ No reservation required

• 10:00 am – 12:30 pm A-bomb survivor's testimony and opinion exchange with participants in English

, 1:00 pm – 2:00 pm A-bomb survivor's testimony in Japanese

∫ 2:30 pm – 3:30 pm A-bomb survivor's testimony in Japanese

**OTHER EVENTS:**

∫ **2020 Vision (nuclear weapons abolition campaign) Signature Collection Corner**

∫ **Rest Area (cold water available):** Dahlia Room, BF2 (9:00 am – 4:30 pm)

**INQUIRIES:** *Shimin Katsudo Suishin Ka* (Citizens Activities Promotion Division of Hiroshima City Hall)

082-504-2746 E-mail: katsudo@city.hiroshima.lg.jp

**A-bomb Testimony in English** Ⓞ Free Admission ☺ No reservation required

**DATE & TIME:** ∪ Sun., August 6: 10:00 am – 12:30 pm

(includes discussion between an A-bomb survivor and participants.)

∨ Fri., August 18: 2:30 pm – 3:00 pm

∩ Sun., August 20: 2:30 pm – 3:00 pm

**VENUE:** ∪ : *Hiroshima Kokusai Kaigijo* (International Conference Center Hiroshima; inside Peace Memorial Park), BF2, COSMOS Room

∨ & ∩ Hiroshima Peace Memorial Museum, BF1, East Building, Meeting Room 1

**ACCESS:** From Genbaku Dome-mae (A-Bomb Dome) Streetcar Stop, walking time to destination is 5 minutes.

**INQUIRIES:** Hiroshima Peace Memorial Museum, *Keihatsu Ka* (Outreach Division) 082-242-7828

### The 25<sup>th</sup> Flag Ceremony 2017 by Hiroshima World Peace Prayer Society Members

**DATE & TIME:** Sun., August 6 9:00 am – 10:30 am

**PLACE:** East side of the A-Bomb Dome (inside Peace Memorial Park)

**ACCESS:** Get off at Genbaku Dome-mae (A-Bomb Dome) Streetcar Stop.

**INQUIRIES:** Hiroshima World Peace Prayer Society Members (URL: <http://heiwa.holy.jp/wppc-hiroshima/>)

E-mail: [hiroshimaypeace@gmail.com](mailto:hiroshimaypeace@gmail.com) (Tominaga) or [Hiroshimawppsm@yahoo.co.jp](mailto:Hiroshimawppsm@yahoo.co.jp) (Nagata)

☺ People pray for peace while holding the national flags of 194 countries. Anyone can take part in this event.

### Hiroshima City Museum of History and Traditional Crafts: Museum Tour

**DATE & TIME:** Sun., August 6 9:00 am – 5:00 pm

**PLACE:** *Hiroshima-shi Kyodo Shiryokan* (Hiroshima City Museum of History and Traditional Crafts)  
 (Ujina-miyuki, Minami-ku, Hiroshima City)

**ACCESS:** From Ujina 2-chome Streetcar Stop, walking time to destination is 10 minutes.

**FEE:** Admission fee for the museum; Adults – ¥100 Seniors (65 years and up) & High school students – ¥50  
 Junior high school students and under – Free

**INQUIRIES:** Hiroshima City Museum of History and Traditional Crafts 082-253-6771

☺ A look around the museum which was exposed to the A-bomb, tasting food eaten during and after the war, etc. (this will be held in Japanese only).

### Ikebana (flower arrangement) Exhibition

**DATE & TIME:** Sun., August 6 9:00 am – 8:00 pm

**PLACE:** *Chuo Hiroba*, SHAREO, underground shopping mall (Moto-machi, Naka-ku, Hiroshima City)

**ACCESS:** Get off at Kamiya-cho-nishi, Kamiya-cho-higashi or Hondori Streetcar Stops.

**INQUIRIES:** Ikebana International Hiroshima Branch Office 082-222-2897

Please feel free to contact the International Exchange Lounge at 082-247-9715

E-mail: [golounge@pcf.city.hiroshima.jp](mailto:golounge@pcf.city.hiroshima.jp)

August 2017

**Peace Messages from Kamiya-cho**

**DATE & TIME:** Sun., August 6 10:00 am – 7:00 pm

**PLACE:** *Nishi Hiroba*, SHAREO, underground shopping mall (Moto-machi, Naka-ku, Hiroshima City)

**ACCESS:** Get off at Kamiya-cho-nishi, Kamiya-cho-higashi or Hondori Streetcar Stops.

**INQUIRIES:** SHAREO Information Center 082-546-3111

**Hiroshima City Ebayama Museum of Meteorology: Museum Tour**

**DATE & TIME:** Sun., August 6 11:00 am – 3:00 pm

**PLACE:** *Hiroshima-shi Ebayama Kishokan* (Hiroshima City Ebayama Museum of Meteorology)  
(Eba-minami, Naka-ku, Hiroshima City)

**ACCESS:** Get off at Eba Streetcar Stop. The museum is located 1 km from the stop.

**FEE:** Admission fee for the museum; Adults – ¥100 Seniors (65 years and up) & High school students – ¥50  
Junior high school students and under – Free

**INQUIRIES:** Hiroshima City Ebayama Museum of Meteorology 082-231-0177

ÿ A look around the museum which was exposed to the A-bomb (this will be held in Japanese only).

**The 16<sup>th</sup> Hiroshima Festival: Peace Concert**

**DATE & TIME:** Sun., August 6 From 5:00 pm onward (doors will open at 4:00 pm.)

**VENUE:** Hiroshima Bunka Gakuen HBG Hall (Kako-machi, Naka-ku, Hiroshima City)

**ACCESS:** Take a No. 24 bus bound for Yoshijima-eigyo-sho or Yoshijima-byoin and get off at Kako-machi.

**TICKETS:** High school students and up: Advance – ¥3,500 At the door – ¥4,000  
Junior high school students and under: ¥1,000

² Advance tickets are sold at Ticket PIA, Seven-Eleven and Circle K Sunkus.

**INQUIRIES:** Hiroshima Festival Executive Committee 082-889-2568 (Yamane)

HP: <http://hiroshima-matsuri0806.jp/>

**Peace Candle 2017**

**DATE & TIME:** Sun., August 6 1:00 pm – 10:00 pm

**PLACE:** Peace Memorial Park and around A-bomb Dome

**ACCESS:** From Genbaku Dome-mae (A-Bomb Dome) Streetcar Stop, walking time to destination is 5 minutes.

**INQUIRIES:** *Hiroshima Tendo-mushi no Kai* 090-4650-1111

**Peace Messages on Floating Paper Lanterns**

**DATE & TIME:** Sun., August 6 6:00 pm – 10:00 pm (Participants will be accepted from 6:00 am to 9:00 pm on the day of.)

**PLACE:** Motoyasugawa River (inside Peace Memorial Park)

**ACCESS:** Get off at Genbaku Dome-mae (A-Bomb Dome) Streetcar Stop.

**INQUIRIES:** *Toro-nagashi* Executive Committee 082-245-1448

ÿ Paper lanterns will be floated on the Motoyasu-gawa River to console the souls of the deceased. You may participate in the event by buying a lantern (¥600) and letting it float away.

**Peace Concerts**

**DATE & TIME:** ☒ Sun., August 6 From 6:30 pm onward

• Mon., August 7 From 7:30 pm onward

☒ Tue., August 8 From 2:00 pm onward

**VENUE:** ☒ Nishi Kumin Bunka Center (Yokogawa, Nishi-ku, Hiroshima City)

• LIVE café Jive (Yagenbori, Naka-ku, Hiroshima City)

☒ *Shinsui* Terrace, the opposite side of the A-bomb Dome (inside Peace Memorial Park)

**ACCESS:** ☒ From JR Yokogawa Station (JR Sanyo Line), walking time to destination is 5 minutes.

• From Ebisu-cho or Kanayama-cho Streetcar Stops, walking time to destination is 10 minutes.

☒ Get off at Genbaku Dome-mae Streetcar Stop.

**TICKETS:** ☒ Junior high school students and up – ¥2,000 Elementary school students and under – ¥500  
• ¥4,000 ☒ Free

**INQUIRIES:** *Nagomi* Project 082-922-7699

Please feel free to contact the International Exchange Lounge at 082-247-9715

E-mail: [golounge@pcf.city.hiroshima.jp](mailto:golounge@pcf.city.hiroshima.jp)

August 2017

**Nagasaki Peace Memorial Ceremony** ○ Free Admission

DATE &amp; TIME: Wed., August 9 10:50 am – 11:55 am

PLACE: Hiroshima Peace Memorial Museum, BF1, East Building

ACCESS: From Genbaku Dome-mae (A-Bomb Dome) Streetcar Stop, walking time to destination is 5 minutes.

INQUIRIES: *Hiroshima Heiwa Bunka Center, Heiwa Rentai Suishin Ka* 082-242-7831

ÿ Live telecast of the Peace Memorial Ceremony in Nagasaki

**Recitation of Stories of the Atomic Bombing in English**

○ Free Admission ÿ No reservation required

DATE &amp; TIME: Sun., August 13 2:30 pm – 3:10 pm

VENUE: *Genbaku Shibotsusha Tsuito Heiwa Kinen Kan* (Hiroshima National Peace Memorial Hall for the Atomic Bomb Victims; inside Peace Memorial Park), BF1, Seminar Room

ACCESS: From Genbaku Dome-mae (A-Bomb Dome) Streetcar Stop, walking time to destination is 5 minutes.

INQUIRIES: Hiroshima National Peace Memorial Hall for the Atomic Bomb Victims 082-543-6271

**Short Animation Screening: PICA-DON** ○ Free Admission ÿ No reservation required

DATE &amp; TIME: August 18 (Fri.), 19 (Sat.) &amp; 20 (Sun.) 12:30 pm – 12:40 pm

VENUE: Hiroshima Peace Memorial Museum, BF1, East Building, Meeting Room 1

ACCESS: From Genbaku Dome-mae (A-Bomb Dome) Streetcar Stop, walking time to destination is 5 minutes.

INQUIRIES: Hiroshima Peace Memorial Museum, *Keihatsu Ka* (Outreach Division) 082-242-7828

Please feel free to contact the International Exchange Lounge at 082-247-9715

E-mail: [golounge@pcf.city.hiroshima.jp](mailto:golounge@pcf.city.hiroshima.jp)

August 2017



# Municipal Facilities

## G Facilities

(Address / Telephone / Open Hours / Closed / Admission Fee / URL)

Admission is generally allowed up to 30 min. prior to closing.

## P Hiroshima City Forest Park & Insectarium

(173 Fujigamaru, Fukuda-cho, Higashi-ku 732-0036 / Forest Park: 899-8241, Insectarium: 899-8964 / Forest Park: 9:00 am - 4:30 pm;

Insectarium: 9:00 am - 4:30 pm / Forest Park & the Insectarium will open every day in August / Admission Fees for the Insectarium: Adults-¥510, Seniors & High school students-¥170, Junior high & Elementary school students-Free (Free admission for high school students on Saturdays (except on national holidays and during school holidays)) / Forest Park: <http://www.daiichib-shitei.com/forest/> Insectarium: <http://www.hiro-kon.jp/>)

## Events at the Forest Park

### ! Forest Park Summer Special Events

N Free taxi service will be available from Seven-Eleven Hiroshima Umaki (Umaki, Higashi-ku) to the forest park between 9:00 am and 5:00 pm on Aug. 13, 14 & 15.

○ **Craft Workshops** / Wed., Aug. 9, 16 & 23 / 9:00 am - 2:00 pm / *Kanri Center* / Fee: ¥100 - ¥500 for materials <sup>2</sup> The first 100 participants will be accepted on the day of.

○ **Night Opening: Astronomical Observation** / Sat., Aug. 5 / 7:30 pm - 9:30 pm / *Chuo Hiroba* / Fee: Free  
 ☺ The first 150 people will have a chance to see stars through a telescope.

○ **Stamp Rally** / Sun., Aug. 6 / 9:30 am - 3:00 pm / Fee: Free ☺ The first 200 participants will be accepted between 9:00 am and 2:00 pm on the day of.

○ **Ennichi** / Aug. 13 (Sun.), 14 (Mon.) & 15 (Tue.) / 9:30 am - 3:00 pm / *Chuo Hiroba* & around *Jabu Jabu River* / Participation Fee: ¥300/ ticket <sup>2</sup> Tickets will be sold from 9:00 am to 2:00 pm on the day of. The first 500 participants will be accepted for each day. J Various stalls will be set up nearby.

○ **Craft Workshop with a Hammer and Nails** / Sun., Aug. 20 / j 10:00 am - noon  
 k 1:00 pm - 3:00 pm / For elementary school students & under, and their guardians / *Ringyo Taiken Hiroba* / Participation fee: ¥1,000 for materials

<sup>2</sup> Participants will be accepted from 9:00 am

for j and from noon for k on the day of. 30 participants will be accepted for each time slot.

○ **Catching Ayu, sweetfish** / Sun., Aug. 27 / 9:00 am - 2:00 pm / *Jabu Jabu River* / For elementary school students and under / Fee: ¥300/ person  
<sup>2</sup> Numbered tickets will be distributed from 9:00 am at *Jabu Jabu River*. The first 400 participants will be accepted (1 *ayu*/ person) on the day of.

! **Make & Play with a Menko** / Sun., Sept. 3 / j 10:00 am - noon k 1:00 pm - 3:00 pm / *Kyukei-jo, Shibafu Hiroba* / Fee: Free  
<sup>2</sup> Participants will be accepted on the day of. J *Menko* is a thick card which is a classic children's game in Japan.

! **Craft Workshop: PET Bottle Rocket** / Sat., Sept. 9 & Sun., Sept. 10 / j 10:00 am - noon  
 k 1:00 pm - 3:00 pm / *Chuo Hiroba* / For elementary school students & under, and their guardians / Fee: ¥500 for materials  
**To APPLY:** Send an e-mail, a fax or an *ofuku-hagaki* (return postcard) with applicants' names, address, telephone number, age and the event name ペットボトルロケットを作<sup>く</sup>って飛ばそう ("PET bottle rocket wo tsukutte tobasou") to the park postmarked by Thurs., Aug. 24. 30 postcards will be selected at random by a drawing of names for each time slot.

! **Ennichi** / Sun., Sept. 17 & Mon., Sept. 18 / 9:30 am - 3:00 pm / *Chuo Hiroba* & around *Jabu Jabu River* / Participation Fee: ¥300/ ticket <sup>2</sup> The first 500 participants will be accepted for each day.

J Various stalls will be set up nearby.

! **Craft Workshop: Taketombo** (T-shaped flying bamboo toy) / Sat., Sept. 23 / 10:00 am - noon / *Chuo Hiroba* / For elementary school students (you can join with your brothers and sisters) and their guardians / Fee: Free  
<sup>2</sup> The first 20 groups will be accepted from 9:30 am on the day of.

## Events at the Insectarium

! **Special Summer Exhibition: Beetles and Stag Beetles of the World 2017** / Sat., Jul. 15 - Sun., Sept. 3

### Events Related to the Exhibition

○ **Beetles vs. Stag Beetles** / Saturdays, Sundays & Aug. 11

Please feel free to contact the International Exchange Lounge at 082-247-9715.

E-mail: [golounge@pcf.city.hiroshima.jp](mailto:golounge@pcf.city.hiroshima.jp)

August 2017

## E The Hiroshima Botanical Garden

(3-495 Kurashige, Saeki-ku 731-5156 / 922-3600 / 9:00 am - 4:30 pm / Closed on Friday / Adults-¥510, Seniors & High school students-¥170, Junior high and Elementary school students-Free (Free admission for high school students on Saturdays (except on national holidays and during school holidays)) / <http://www.hiroshima-bot.jp/>)

<Exhibitions> Exhibitions will close at 3:30 pm on their last day.

### √ Tenji Shiryo-kan

{ *Touchuu-kasou* (*Ophiocordyceps sinensis*) / Sat., Jun. 17 - Thurs., Aug. 17

### √ Tenji Onshitsu (hothouse exhibitions)

{ Carnivorous Plants of the World / Sat., Jul. 22 - Sun., Aug. 20

### √ Okugai Tenji-jo (outdoor exhibitions)

{ *Noriutsugi* (*hydrangea peniculata*) & Summer Plants / Sat., Jul. 15 - Wed., Aug. 30

{ Morning Glories / Mid-July - Early September  
<sup>3</sup> A building (10m high X 50m wide) will be covered with morning glories that look like a huge curtain.

### <Events>

{ Let's Get on a Royal Water Lily Leaf / Tue., Aug. 22 / j 10:30 am - noon k 1:30 pm - 3:00 pm / For children weighing less than 30kg  
**TO APPLY:** Send an *ofuku-hagaki* (return postcard) with your name, address, telephone number, and the event name オオオニバス しじょうたいげんかい 試乗体験会 ("Oonibusu shijo taiken-kai") to the Botanical Garden by Mon., Aug. 7. 200 children will be selected at random by a drawing of names.

### <Lectures>

{ Nature Observation around Urara Pond / Sat., Aug. 5 / 1:30 pm - 3:00 pm  
 { Junior Project / Sun., Aug. 13 / j 10:00 am - 11:00 am k 2:00 pm - 3:00 pm

## ㊦ Children's Museum of Culture and Science

(5-83 Moto-machi, Naka-ku 730-0011 / 222-5346 / 9:00 am - 5:00 pm / Closed on Aug. 7, 14, 21 & 28 / Admission fee for planetarium is required (see below). / <http://www.pyonta.city.hiroshima.jp/>)

### Planetarium

I Admission Fee for Planetarium:  
 Adults-¥510, Seniors & High school students-

¥250, Junior high & Elementary school students-Free

<sup>2</sup> Free admission for high school students on Saturdays (except on most national holidays and during school holidays). Admission fee for adults is ¥250 on the second Saturday of every month (except on most national holidays and during school holidays).

### ㊦ Planetarium Program

® How to Watch Stars in the Night Sky (45 min.) / Until Sun., Sept. 10 / Adults-¥510, Seniors & High school students-¥250

#### Time Schedule

√ Weekdays: 11:00 am  
 √ Sat., Sun. & national holidays:  
 • 10:00 am , 3:00 pm

® Back to the Moon for Good / Fri., Jul. 21, 2017 - Sun., Jan. 14, 2018 / Adults-¥510, Seniors & High school students-¥250

#### Time Schedule

√ Weekdays: 2:00 pm  
 √ Sat., Sun., national holidays & summer holiday season (Jul. 21 - Aug. 31):  
 • 11:00 am , 2:00 pm

### ㊦ 360° Full Dome Shows

® Kaluoka'hina - The Enchanted Reef - (10, 40 min.) / Until Fri., Oct. 27 / Adults-¥510, Seniors & High school students-¥250

#### Time Schedule

√ Summer holiday season (Jul. 21 - Aug. 31) / 1:00 pm

㊦ Refretarium: Summer Program / Sat., Jun. 10 - Fri., Sept. 8 (except Sundays) / High school students and up-¥200

#### Time Schedule

√ Summer holiday season (Jul. 21 - Aug. 31; except Sundays): 4:00 pm - 4:20 pm

<sup>2</sup> This is a program to refresh your mind and body during lunch time while watching the starry sky and listening to music. Although the main target of this program is adults, anyone who wishes to rejuvenate themselves is welcome.

### ㊦ Starry Sky Tour

® Tonight's Starry Sky & the 40<sup>th</sup> Anniversary of the Voyager Program / Sundays between Sun., Jul. 23 and Sun., Oct. 15 / 4:00 pm - 4:50 pm / Adults-¥510, Seniors & High school students-¥250

### Events

㊦ Exhibition: Automata / Fri., Jul. 21 - Sun., Sept. 3 / 3F, Tenji Hall / Fee: Free

㊦ Craft Workshop: Make an Automata / Wed., Aug. 30 & Thurs., Aug. 31 / • 9:30 am - noon , 1:30 pm - 4:00 pm / For elementary school

Please feel free to contact the International Exchange Lounge at 082-247-9715.

E-mail: [golounge@pcf.city.hiroshima.jp](mailto:golounge@pcf.city.hiroshima.jp)

August 2017

students and up <sup>2</sup> Elementary school 1<sup>st</sup> - 4<sup>th</sup> graders should be accompanied by their guardians. / 3F, *Sousak-shitsu* / Fee: ¥1,200

**TO APPLY:** Send an *ofuku-hagaki* (return postcard) with participant's name, address, telephone number, name of the school the applicant belongs to, grade, the date you wish to attend (Aug. 30 or 31) and the event name

オートマタを作ろう (*Automata wo tsukurou*) to the museum postmarked by Wed., Aug. 16. 12 participants will be selected at random by a drawing of names for each day.

- ¶ Summer Concert (250 seats) / Sun., Aug. 6 / • Noon - 12:30 pm , 2:30 pm - 3:00 pm (Doors will open at 11:45am for • & at 2:15pm for , .) / 1F, Apollo Hall / Free admission
- ¶ Craft Workshops / Aug. 5 (Sat.), 9 (Wed.), 20 (Sun.), 24 (Thurs.) & 27 (Sun.) / 1:00 pm - 3:30 pm / For children under elementary school entry age, elementary school students (1<sup>st</sup> - 3<sup>rd</sup> grade) and their guardians / 3F, *Kosaku-shitsu* (Craft Room) / Fee: ¥30 for materials <sup>2</sup> Each day's program is different. For more information, please contact the museum.
- ¶ Science Show / • 1:30 pm - 2:00 pm , 3:00 pm - 3:30 pm / 1F, Science Studio / Fee: Free
  - Science Show by Hiroshima Gas Co. 'Team Groovy' / Sat., Aug. 5
  - Popular Experiments / Sun., Aug. 13
  - Explosion Experiments / Sat., Aug. 19 & 26

μ The events listed below require advance applications.

**To APPLY:** Send an *ofuku-hagaki* (return postcard) to the museum, postmarked by each event's application deadline with the following information: applicants' names, address, telephone number, school year and the event name and time you wish to attend.

### Science Workshops

- ® Make a Leaf Vein Specimen / 自然の芸術 ~ 美しい葉脈標本を作ろう ~ (*Shizen no geijutsu ~ Utsukushii youmyaku hyohon wo tsukurou ~*) / Wed., Aug. 23 / j 9:30 am - noon < 1:30 pm - 4:00 pm / For elementary school students / Fee: ¥200 / Closing date for applications: Wed., Aug. 9 <sup>2</sup> 16 people will be selected at random by a drawing of names for each time slot.
- ® Model Helicopter / マイ・ヘリコプター (*My helicopter*) / Sat., Aug. 26 / j 11:00 am - 12:30 pm < 2:00 pm - 3:30 pm / For elementary (3<sup>rd</sup> - 6<sup>th</sup> grade) school students / Fee: Free / Closing date for applications: Sat., Aug. 12 <sup>2</sup> 16 people will be selected at random by a drawing of names for each time slot.

- ® Make Sweets with a Scientific Approach / お菓子を科学しよう (*Okashi wo kagaku shiyou*) / Sun., Sept. 10 / 1:30 pm - 4:00 pm / For elementary school students / Fee: ¥500 / Closing date for applications: Sun., Aug. 27 <sup>2</sup> 16 people will be selected at random by a drawing of names for each time slot.

### Craft Workshop

- ® Carve a Chinese Character / コツコツ刻字 (*Kotsu kotsu kokuji*) / Sun., Aug. 20 / 9:30 am - 3:30 pm / For elementary (4<sup>th</sup> - 6<sup>th</sup> grade) & junior high school students / Fee: ¥500 / Closing date for applications: Sun., Aug. 6 <sup>2</sup> 12 people will be selected at random by a drawing of names.
- ® Dinosaur-making with Recycled Paper & Hangers / 恐竜づくり (*Kyoryu zukuri*) / Fri., Aug. 25 / j 9:30 am - noon < 1:30 pm - 4:00 pm / For elementary school students / Fee: ¥100 / Closing date for applications: Fri., Aug. 11 <sup>2</sup> 20 people will be selected at random by a drawing of names for each time slot.
- ® Leatherwork / 革で作る工作 (*Kawa de tsukuru kousaku*) / Sat., Aug. 26 / j 9:30 am - noon < 1:30 pm - 4:00 pm / For elementary & junior high school students / Fee: ¥1,000 / Closing date for applications: Sat., Aug. 12 <sup>2</sup> 20 people will be selected at random by a drawing of names for each time slot.

### Other Workshops

- ® Water and Air Experiments with PET Bottles / 街かどかがく広場 水がでるときでないとき (*Machikado kagaku hiroba: mizu ga deru toki denai toki*) / Sat., Sept. 9 / 1:30 pm - 4:00 pm / For elementary school students / Fee: ¥200 / Closing date for applications: Sat., Aug. 26 <sup>2</sup> 20 people will be selected at random by a drawing of names.

### J Hiroshima City Asa Zoological Park

(Asa-cho Dobutsuen, Asakita-ku 731-3355 / 838-1111 / 9:00 am - 4:30 pm / Closed: Thursdays / Adults-¥510, Seniors & High school students-¥170, Junior high & Elementary school students-Free / <http://www.asazoo.jp/>)

- Asa Zoo & "Miyaji-marine" (Miyajima Public Aquarium) Collaborating Event 2017: Stamp Rally / Sat., Jul. 15, 2017 - Mon., Jan. 8, 2018
- Backyard Guide Tour / Sat., Aug. 5, 12 & 19 / j 11:00 am < 12:30 pm / Please gather near the entrance at 9:00 am on each activity day. The first 20 - 40 people can participate.

Please feel free to contact the International Exchange Lounge at 082-247-9715.

E-mail: [golounge@pcf.city.hiroshima.jp](mailto:golounge@pcf.city.hiroshima.jp)

August 2017

The number of participants will differ depending on where you visit. We will explore a different place on each trip.

- **Cheer for Sanfrecce with Mei-chan, an African Forest Elephant** / Mon., Aug. 7 / 11:00 am - noon
- **Night Safari** / Aug. 12 (Sat.), 13 (Sun.), 19 (Sat.), 20 (Sun), 26 (Sat.) & 27 (Sun.); Sept. 2 (Sat.) & 3 (Sun.) / The zoo will be open until 9:00 pm on these days. (Entry allowed up to 8:30 pm.)
  - ✓ Shuttle bus service between zoo and *Astramline* Kamiyasu Station will be available from sundown to 9:00 pm on the Night Safari event days.
  - <sup>2</sup> *Kakigori* (shaved ice) tickets will be distributed for visitors who wear *yukata* or *jinbei* on Aug. 12 & 13.
  - <sup>a</sup> **Events Related to the Night Safari**<sup>a</sup>
    - *Kagura* Performance / Sat., Aug. 12, 19, 26 & Sept. 2 / 6:00 pm - 7:30 pm / *Picnic Hiroba*
    - **Hiroshima Symphony Orchestra Evening Concert** / Sun., Aug. 13 / j 6:00 pm - 6:30 pm k 7:30 pm - 8:00 pm / *Yagai* Stage
    - **Animal Story Time** / Sun., Aug. 20, 27 & Sept. 3 / 7:30 pm - 8:00 pm / *Yagai* Stage
- **Fun Events at the Zoo** / Sun., Aug. 20 / 9:00 am - 4:00 pm
  - J Animals' teeth quiz, dental health consultation, etc.
- **Giant Salamander Facility Tour** / Sat., Aug. 26 / 11:00 am - 11:45 am <sup>2</sup> Reservations will be accepted from 9:00am at the main entrance until 20 spots are filled.
- **Meet the Black Rhinoceros named *Hana*** / Sat., Aug. 26 / • 1:30 pm , 1:45 pm
  - <sup>2</sup> Participation tickets will be distributed from 9:00 am at the main entrance until 10 spots are filled for each time slot.
  - <sup>3</sup> The black rhinoceros, *Hana*, is the world's oldest living black rhinoceros.

U **Numaji Transportation Museum (Hiroshima City Transportation Museum)**  
 (2-12-2 Chorakuji, Asaminami-ku 731-0143 / 878-6211 / 9:00 am - 5:00 pm / Closed: Aug. 28 & 29 / Adults-¥510, Seniors & High school students-¥250, Junior high school students and under-Free  
 / <http://www.vehicle.city.hiroshima.jp>)

- Ž **Summer Special Exhibition: Fuels and Energies for Vehicles** / Fri., Jul. 14 - Sun., Sept. 3 / 9:00 am - 5:00 pm / Fee: Museum admission
- Ž **Science Show: Scientific Experiments** / Aug. 11 (Fri.), 12 (Sat.) & 13 (Sun.) / j 11:30 am -

- 11:50 am k 1:30 pm -1:50 pm f 2:30 pm - 2:50 pm / 1F, *Tamokuteki Hall* / Fee: Free
- Ž **Exhibition on a Streetcar Exposed to the A-Bomb** / Aug. 5 (Sat.), 6 (Sun.) & 19 (Sat.) / j 11:00 am - noon k 1:30 pm - 3:00 pm / *Okugai Hiroba* (outdoor open space) / Fee: Free <sup>2</sup> Exhibition will be canceled if it is bad weather.
- Ž **Vehicle Land: Playing with Toy Vehicles** / Sat., Aug. 19 & Sun., Aug. 20 / 1:00 pm - 4:00 pm (entry allowed up to 3:45 pm.) / 1F, *Tamokuteki Hall* / Fee: Free
- Ž **Experiment of Comparing between a Current Car and a 50-year-old Car: Collison E Experiment & Quiz Show** / Tue., Aug., 22 / j 10:30 am - 11:30 am k 1:00 pm - 2:00 pm f 2:30 pm - 3:30 pm / For the 3<sup>rd</sup> - 6<sup>th</sup> grade of elementary school students / 1F, Craft Room / Participation fee: Free  
**TO APPLY:** Send an *ofuku-hagaki* (return postcard) with the applicants' names, address, telephone number, name of the school the applicant belongs to, grade and the event name, 夏休み自動車教室 ("Natsuyasumi jidousha kyoushitsu") to the museum by Fri., Aug. 11. 20 people will be selected at random by a drawing of names for each time slot.  
<sup>2</sup> Elementary school 4<sup>th</sup> graders and under should be accompanied by their guardians.
- Ž **Check Your Visual Performance with a "Drivers' Vision"** / Sat., Aug. 26 / • 10:00 am - noon , 1:30 pm - 3:30 pm / 1F, Entrance Hall / Fee: Free
- Ž **Children's Craft Workshops** / Sun., Aug. 6, 13, 20 & Fri., Aug. 11 / 1:00 pm - 3:30 pm / For preschoolers, elementary school students and their guardians / 1F, Craft Room / Fee: ¥50 for materials <sup>2</sup> The first 100 groups can participate on the day of.
- Ž **Craft Workshop for Elementary School 1<sup>st</sup> -4<sup>th</sup> Graders: Marble Coaster f** / Mon., Aug. 21 / • 9:30 am - 11:30 am , 1:30 pm - 3:30 pm / 1F, Craft Room / For elementary school 1<sup>st</sup> - 4<sup>th</sup> graders (Participants should be accompanied by their guardians.) / Fee: ¥300 for materials  
**TO APPLY:** Send an *ofuku-hagaki* (return postcard) with the applicant's name, name of the school the applicant belongs to, grade, the guardian's name, address, telephone number and the workshop name はじめの工作教室 : ピー玉コースター ("Hajime no kousaku kyoushitsu: b-dama coaster f") to the museum by Mon., Aug. 7. 25 people will be selected at random by a drawing of names for each time slot.

Please feel free to contact the International Exchange Lounge at 082-247-9715.

E-mail: [golounge@pcf.city.hiroshima.jp](mailto:golounge@pcf.city.hiroshima.jp)

August 2017



Ž **Craft Workshop for Elementary School 3<sup>rd</sup> - 6<sup>th</sup> Graders: Motor Buggy** / Thurs., Aug. 24 / • 9:30 am - 11:30 am , 1:30 pm - 3:30 pm / 1F, Craft Room / For elementary school 3<sup>rd</sup> - 6<sup>th</sup> graders (3<sup>rd</sup> & 4<sup>th</sup> grade students should be accompanied by their guardians.) / Fee: ¥500 for materials

**TO APPLY:** Send an *ofuku-hagaki* (return postcard) with the applicant's name, name of the school the applicant belongs to, grade, the guardian's name, address, telephone number and the workshop name **チャレンジ**.

**工作教室** : モーターバギー ("Challenge kousaku kyoushitsu: motor buggy") to the museum by Thurs., Aug. 10. 25 people will be selected at random by a drawing of names for each time slot.

Ž **Craft Workshops for Elementary School Students** / • 9:30 am - 11:30am , 1:30 pm - 3:30 pm / 1F, Craft Room / For elementary school students (1<sup>st</sup> - 4<sup>th</sup> grade students should be accompanied by their guardians.)

**TO APPLY:** Send an *ofuku-hagaki* (return postcard) to the museum by each workshop's application deadline with the applicant's name, name of the school the applicant belongs to, grade, address, telephone number, event date and the workshop name.

Ⓔ **Mystery of Sound / 音のふしぎ体験** ("Oto no fushigi taiken") / Wed., Aug. 23 / Fee: ¥100 for materials / Closing date for applications: Wed., Aug. 9 <sup>2</sup> 25 people will be selected for each workshop at random by a drawing of names for each time slot.

• **Remote-controlled Fire Engine / リモコン消防車** ("Rimokon shoubousha") / Sat., Aug. 26 / Fee: ¥400 for materials / Closing date for applications: Sat., Aug. 12 <sup>2</sup> 25 people will be selected for each workshop at random by a drawing of names for each time slot.

## ⊗ Hiroshima City Ebayama Museum of Meteorology

(1-40-1 Eba-minami, Naka-ku 730-0835 / 231-0177 / 9:00 am - 5:00 pm / Closed on Mondays (except Sept. 18) & Sept. 19/ Adults-¥100, Seniors & High school students-¥50, Junior high & Elementary school students-Free (Free admission for high school students on Saturdays except during school holidays) / <http://www.ebayama.jp/>)

T **Summer Special Exhibition: Science of Shaking & Quaking** / Sat., Jul. 29 - Sun., Aug. 27

## T Science Shows

Ⓔ **Experiment Shows** / Sat., Jul. 29 - Thurs., Aug. 31 / • 11:00 am - 11:30 am † 1:30 pm - 2:00 pm ‡ 3:00 pm - 3:30 pm

Ⓔ **Science Magic** / Sept. 3 (Sun.), 16 (Sat.), 17 (Sun.), 18 (Mon.), 23 (Sat.), 24 (Sun) & 30 (Sat.) / • 1:30 pm - 2:00 pm † 3:00 pm - 3:30 pm

T **Science Workshop: Kaleidoscope** / Sat., Sept. 2 / 1:00 pm - 3:30 pm / For junior high school students and under / Fee: ¥200 for materials

<sup>2</sup> The first 50 participants will be accepted for each workshop from 10:00 am on the day of.

T **Events for Disaster Prevention Day** / Sat., Sept. 9 & Sun., Sept. 10 / 10:00 am - 4:00 pm

T **Ms. Kyoko Katsumaru, a Weather Forecast Talk Show** / Sun., Sept. 10 / • 11:00 am - noon , 2:00 pm - 3:00 pm

<sup>2</sup> The first 200 people will be accepted on the day of for each time slot.

## H Hiroshima City Museum of History and Traditional Crafts

(2-6-20 Ujina-miyuki, Minami-ku 734-0015 / 253-6771 / 9:00 am - 5:00 pm / Closed on Mondays / Adults-¥100, Seniors & High school students-¥50, Junior high school students and under-Free / <http://www.hiroins-net.ne.jp/kyodo/>)

### P Special Exhibitions

Ⓔ **Ghost's Summer Holiday** / Fri., Jul. 21 - Sun., Aug. 27

Ⓔ **Miniature of Ujina Gaisenkan** / Until Tue., Aug. 15

### P Special Summer Events

Ⓔ **Museum Tour** / Sun., Aug. 6 / 9:00 am - 5:00 pm / Participation fee: Free (Admission fee for the museum is required.)

<sup>3</sup> Looking around the museum, which was exposed to the A-bomb, tasting food eaten during and after the war, etc.

Ⓔ **Craft Workshops** / Weekdays between Aug. 3 and Aug. 18 & Fri., Aug. 11 / • 10:00 am - 10:30 am , 11:00 am - 11:30 am ‡ 1:30 pm - 2:00 pm „ 2:30 pm - 3:00 pm / Participation fee: Free (admission fee for the museum is required.)

<sup>2</sup> The first 30 participants for each time slot will be accepted from 30 min. before each starting time on the day of.

Ⓔ **Projection Mapping in Museum (8 minutes)** / Sat., Aug. 19 - Sun., Aug. 27 / • 10:00 am , 10:30 am ‡ 11:00 am „ 11:30 am ... 1:00 pm † 1:30 pm ‡ 2:00 pm ^ 2:30 pm % 3:00 pm § 3:30 pm ¶ 4:00 pm / Participation fee: Free (admission fee for the museum is required.)

Please feel free to contact the International Exchange Lounge at 082-247-9715.

E-mail: [golounge@pcf.city.hiroshima.jp](mailto:golounge@pcf.city.hiroshima.jp)

August 2017

## P Workshops, etc.

- ® Dyeing Lesson for Adults / Fri., Sept. 8 / 1:00 pm - 3:00 pm / 18 years old and up / Participation fee: ¥1,000 (Admission fee for the museum is also required.)
- ² Applications will be accepted by phone or fax between Aug. 1 and 4. 20 people will be selected at random by a drawing of names.

## Hiroshima City Cinematographic and Audio-Visual Library

(3-1 Moto-machi, Naka-ku 730-0011 / 223-3525 / 10:00am - 8:00pm (Tue.-Sat.), 10:00 am - 5:00 pm (Sun., national holidays & August 6) / Closed on Mondays & August 15 / 35mm Film Showings Adults-¥510, Seniors & High school students-¥250, Junior high school students and under-Free; Other Film Showings Adults-¥380, Seniors & High school students-¥180, Junior high school students and under-Free, Admission free for foreign students (Please show your student ID or the Hiroshima International Center Complimentary Pass.) / <http://www.cf.city.hiroshima.jp/eizou/>)

## August Special Showings of Masterpieces of Japanese Film: Cinémathèque of Peace 2017 (Screened in Japanese only)

## I Admission Fee:

- Adults-¥510, Seniors (65 years old and up)-¥250, People born in 1989 and later-Free
- ² Free admission on August 5 & 6
- ² August 20, 30 & 31: Adults-¥380, Seniors (65 years old and up)-¥180, People born in 1989 and later-Free

- Ÿ Fri., Aug. 4 / j 10:30 am k 2:00 pm  
f 6:30 pm  
Kuroi ame ni utarete / 黒い雨にうたれて (1984, Gen Production, Tsuchida Production, 94 min., color, 35mm film) / Director: Takeshi Shirato / Voice actors: Hideki Saijo, Yoshie Shimamura, Takeshi Obayashi, Issei Masamune
- Ÿ Sat., Aug. 5 / j 10:30 am k 2:00 pm  
Genbaku no ko / 原爆の子 (1952, Kindai Eiga Kyokai, Gekidan Mingei, 96 min., B&W, 35mm film) / Director: Kaneko Shindo / Cast: Nobuko Otowa, Osamu Takizawa, Tanie Kitabayashi, Jukichi Uno
- Ÿ Sat., Aug. 5 / j 6:00 pm  
Ishibumi / 碑 (1969, Hiroshima Television, 53 min., B&W, DVD) / Plot: Zenzo Matsuyama / Producer: Moe Sugihara / Cast: Haruko Sugimura
- Ÿ Sun., Aug. 6 / j 10:30 am k 2:00 pm  
Ishibumi / いしぶみ (2016, Hiroshima Television, 85 min., color, Blu-ray) / Director: Hirokazu Koreeda / Cast: Haruka Ayase, Akira Ikegami

- Ÿ Wed., Aug. 9 / j 10:30 am k 2:00 pm  
f 6:30 pm  
TOMORROW ashita / TOMORROW 明日 (1988, Light Vision, Sawai Production, Souei Shinsha, 105 min., color, 35mm film) / Director: Kazuo Kuroki / Cast: Kaori Momoi, Kaho Minami, Nobuko Sendo, Shiro Sano
- Ÿ Thurs., Aug. 10 / j 10:30 am k 2:00 pm  
f 6:30 pm  
Hiroshima 1966 / ヒロシマ 1966 (1966, Production "Shin Seisaku Shudan", Hiroshima Ken Genbaku Hibakusha Eiga Seisaku no Kai, 78 min., B&W, 35mm film) / Director: Kosei Shirai / Cast: Yuko Mochizuki, Hiroko Suzuki, Go Kato, Noriko Matsumoto
- Ÿ Fri., Aug. 11 / j 10:30 am k 2:00 pm  
Kuro ga ita natsu / クロがいた夏 (1990, Gen Production, Chugoku Hoso, 67 min., color, 35mm film) / Director: Takeshi Shirato / Voice actors: Esuko Taguchi, Masahiro Kogatana, Yuki Nakajima, Koji Yada
- Ÿ Sat., Aug. 12 / j 10:30 am k 2:00 pm  
f 6:00 pm  
Chichi to kuraseba / 父と暮せば (2004, Eisei Gekijo, Bandai Visual, Nihon Skyway, TV Tokyo Media Net, Aoi Promotion, Pal Kikaku, 99 min., color, 35mm film) / Director: Kazuo Kuroki / Cast: Rie Miyazawa, Yoshio Harada, Tadanobu Asano
- Ÿ Sun., Aug. 13 / j 10:30 am k 2:00 pm  
Sono yoru wa wasurenai / その夜は忘れない (1962, Daiei (Tokyo), 95 min., B&W, 35mm film) / Director: Kozaburo Yoshimura / Cast: Ayako Wakao, Jiro Tamiya, Keizo Kawasaki, Kyoko Enami
- Ÿ Fri., Aug. 18 / j 10:30 am k 2:00 pm  
f 6:30 pm  
Kawa ano uragiri ga omoku / 河 あの裏切りが重く (1967, Film Shin-eijin, 103 min., B&W, 35mm film) / Director: Kota Mori / Cast: Jun Haichi, Kimiko Tomita, Kei Sato, Jun Hamamura
- Ÿ Sat., Aug. 19 / j 10:30 am k 2:00 pm  
f 6:00 pm  
Hiroshima no shounin / ヒロシマの証人 (1968, "Hiroshima no shounin" Seisaku Jouei Jikko linkai, 106 min., B&W, 35mm film) / Director: Kazuhiko Saimura / Cast: Yuko Mochizuki, Mariko Taka, Gaku Yamamoto, Midori Isomura
- Ÿ Sun., Aug. 20 / j 10:30 am k 2:00 pm  
Document 8/6 / ドキュメント 8・6 (1977, Chugoku Hoso, 83 min., color, 16mm film) / Director: Kaneto Shindo / Cinematography: Kiyomi Kuroda / Music: Hikaru Hayashi / Narration: Daigo Kusano
- Ÿ Wed., Aug. 30 / j 10:30 am k 2:00 pm  
f 6:30 pm  
Senjo no onna tachi / 戦場の女たち (1989, Shiguro, 55 min., color, 16mm film) / Director: Noriko Sekiguchi / Cinematography: Chris Owen, Yoshio Shimizu / Music: Hitoshi Komuro

Please feel free to contact the International Exchange Lounge at 082-247-9715.

E-mail: [golounge@pcf.city.hiroshima.jp](mailto:golounge@pcf.city.hiroshima.jp)

August 2017

Ÿ Thurs., Aug. 31 / j 10:30 am k 2:00 pm

f 6:30 pm

**Kaku no nai 21 seiki wo Hiroshima karano message / 核のない 21 世紀を ヒロシマからのメッセージ** (2001, Chugoku Hoso, Hiroshima Eiga Center, Seido Production, 60 min., color, 16mm film) / Director: Naoki Katagiri / Cinematography: Shun Yamamoto / Music: Yoko Sato / Narration: Yuji Yokoyama

- Music Films (Screened in original language with Japanese subtitles)

**I Admission Fee:**

Aug. 23 & 25: Adults-¥510, Seniors (65 years old and up)-¥250, People born in 1989 and later-Free

Aug. 24, 26 & 27: Adults-¥380, Seniors (65 years old and up)-¥180, People born in 1989 and later-Free

Ÿ Wed., Aug. 23 / j 2:00 pm k 6:00 pm

**Chopin Pragnienie Milosci** (2002, Poland, 126 min., color, 35mm film, Japanese subtitles) / Director: Jerzy Antczak / Cast: Piotr Adamczyk, Danuta Stenka, Bozena Stachura

Ÿ Thurs., Aug. 24 / j 2:00 pm k 6:00 pm

**Geliebte Clara** (2008, Germany, France, Hungary, 109 min., color, DVD, Japanese subtitles) / Director: Helma Sanders-Brahms / Cast: Martina Gedeck, Pascal Gregory, Malik Zidi

Ÿ Fri., Aug. 25 / j 2:00 pm k 6:00 pm

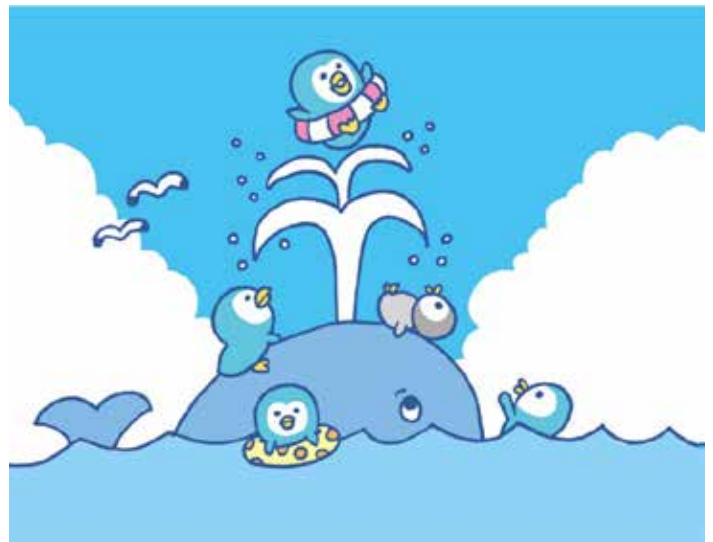
**Le Concert** (2009, France, 124 min., color, 35mm film, Japanese subtitles) / Director: Radu Mihaileanu / Cast: Aleksey Guskov, Mélanie Laurent, François Berléand

Ÿ Sat., Aug. 26 / j 2:00 pm k 6:00 pm

**Nannerl, la Soeur de Mozart** (2010, France, 120 min., color, DVD, Japanese subtitles) / Director: René Féret / Cast: Marie Féret, Marc Barbé, David Moreau, Clovis Fouin

Ÿ Sun., Aug. 27 / j 10:30 am k 2:00 pm

**Der Teufelsgeiger** (2013, Germany, 122 min., color, DVD, Japanese subtitles) / Director: Bernard Rose / Cast: David Garrett, Jared Harris, Helmut Berger



Please feel free to contact the International Exchange Lounge at 082-247-9715.

E-mail: [golounge@pcf.city.hiroshima.jp](mailto:golounge@pcf.city.hiroshima.jp)

August 2017

# Garbage Disposal Information

Separate garbage properly and take it to the collection site by 8:30am on the designated day. Please do NOT take garbage to the site on the night before. Garbage collection days vary depending on where you live and the category of the refuse. For further details, consult your local ward office or your neighbors to be sure of the proper disposal method. "Hiroshima 8", a handbook on how to separate garbage, and "Hiroshima City Garbage Disposal Guidelines for the 2017 fiscal year", a garbage chart with schedules of garbage collection days, are available at ward offices, branch offices and community halls. The Handbook and Guidelines are translated into English, Spanish, Portuguese, Chinese and Korean. These are also available at the International Exchange Lounge (International Conference Center Hiroshima), so please ask the staff if you need them.

---

HIRO CLUB NEWS is published monthly and provides essential and entertaining information about life in Hiroshima City. It is available in print at the International Exchange Lounge, and online at our website: <http://www.pcf.city.hiroshima.jp/ircd/english/hiroclubnews/index.html> Selected information is also available in other languages including Chinese, Portuguese and Spanish.

HIRO CLUB NEWS は広島的生活情報やイベント等の情報を掲載している英語の月刊情報誌です。国際交流ラウンジにて配布しています。当課ホームページにも掲載しています。

英語版の情報の一部を抜粋した中国語・ポルトガル語・スペイン語版も作成しています。

\* \* \* \* \*

Edited and published by the Hiroshima Peace Culture Foundation  
International Affairs Department, International Relations and Cooperation Division

Tel: (082) 242-8879, Fax: (082) 242-7452, E-mail: [internat@pcf.city.hiroshima.jp](mailto:internat@pcf.city.hiroshima.jp)

International Exchange Lounge

Tel: (082) 247-9715, E-mail: [golounge@pcf.city.hiroshima.jp](mailto:golounge@pcf.city.hiroshima.jp)

Website: <http://www.pcf.city.hiroshima.jp/ircd/english/index.html>

編集・発行 公益財団法人広島平和文化センター国際部国際交流・協力課 国際交流ラウンジ  
〒730-0811 広島市中区中島町1番5号