



For your cultural life in Hiroshima

## かき *Oysters*

Hiroshima is a place where the oyster farming business has long thrived. Hiroshima Bay provides the ideal environment for growing oysters because rich nutrients enter this calm bay via rivers which flow from the Chugoku Mountains. As such, oysters produced in Hiroshima account for about 60 percent of the total national oyster harvest.

From autumn through winter, when oysters are in season, visitors can enjoy raw oysters and various other oyster dishes unique to Japan, such as broiled oysters, *kaki-meshi* (oysters steamed in rice), oyster *dote-nabe* (miso hotpot) and deep-fried oysters, in restaurants across Hiroshima City. Such diverse oyster dishes can be found only in Hiroshima.

The best season for oysters has come. Oyster festivals will be held at various places in and around Hiroshima City in February (see the "Seasonal Events Information" section for more information). You can taste various oyster dishes at the venues and also buy fresh oysters and other products. Be sure to enjoy Hiroshima's representative winter dish.

February 2018



# February 2018

Hiro Club News  
No. 275

- Community Connections
- City Office Notices
- Hiroshima Peace Culture Foundation News
- Movie Theaters
- Bilingual TV Programs
- Concerts & Plays
- Museums
- Sports
  - Hiroshima Dragonflies 2017 – 2018 B2 League
- Events
  - Seasonal Event Information
  - Municipal Facilities
- Lounge & Library
  - Library News
  - Damaged & Outdated Books from Int'l Exchange Lounge for free
  - Trio-phone Service (multilingual interpretation using the telephone)
  - Garbage Disposal

**Hiroshima Peace Culture Foundation  
International Exchange Lounge**

1-5 Nakajima-cho, Naka-ku, Hiroshima 730-0811

E-mail: [golounge@pcf.city.hiroshima.jp](mailto:golounge@pcf.city.hiroshima.jp)

Tel. 082-247-9715 Fax. 082-242-7452

« Visit the HIRO CLUB NEWS WEBSITE for information online. «

URL: <http://www.pcf.city.hiroshima.jp/ircd/english/hiroclubnews>





## A foot in the door...*Hiroshima Jōhō a-Netto*

By **ANDREW DEMPSTER** February 2018

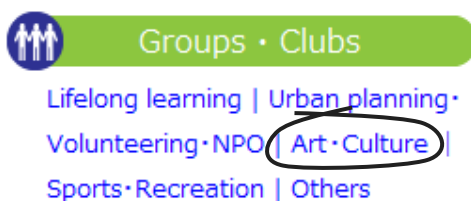
Uprooting your life and moving to a different country is difficult. No question about it. You leave family and friends, and find yourself in a new country, new city, faced with new challenges that you have chosen to undertake in a new language, quite often by yourself. Facing these challenges head on is what can make the experience so rewarding. However, one thing I was not entirely prepared for was giving up my hobbies...How do you continue doing what you love in a country where you do not know many people, let alone know the facilities that would allow you to do so?

Well, let me tell you. I actually stumbled across this information in a previous column of Community Connections titled "*Hiroshima Jōhō a-Netto: An Online Treasure Trove of Community Information*", which was written by one of my predecessors, Karlee Keyser, back in August 2015. It was thanks to that article that I found a way to further develop my interest in woodworking.

It offers a great way to continue hobbies or find new interests, get involved in volunteer groups in your community, as well as provides information about a whole host of events. That is why I feel I should once again champion the website in this edition of Community Connections!

There is only one problem: the website is only offered in Japanese...

In this article, I will give you a basic run down of how to navigate the site. Head over to <http://www.a-net.shimin.city.hiroshima.jp/anet/index.html> to get started.



For the sake of walking through an example, let's say you are a budding watercolour artist that is looking to find other like-minded folk in your community. Start off by heading to "Groups · Clubs (団体・サークル)" either at the top of the page, or down the side where you can go directly to "Art · Culture (芸術・文化)".

You will be taken to a list of categories. Clicking on “Art (美術)” will take you to more specific options relating to the fine arts, such as “Western painting”, “Design”, and “Japanese painting”. You guessed it, click on “Western painting (洋画)”. You will end up at a page resembling the picture to the right, with a list of different groups and their activities. In this instance we are looking for “Watercolor (水彩画)”. Once you’ve scrolled through and found what you’re looking for, you will be confronted head on with information about the group.

## Groups • Clubs

Top > Groups-Clubs > Art-Culture > Art > Western Painting

### Refine Search by Area

You can also search by area.

Please click the name of the area you would like to look at.

- ▶ Naka-ku   ▶ Higashi-ku   ▶ Minami-ku   ▶ Nishi-ku
- ▶ Asaminami-ku   ▶ Asakita-ku   ▶ Aki-ku   ▶ Saeki-ku
- ▶ Outside the city



1 ~ 70 件目 / 70 件中

- 1 **三篠水彩会** New!  
講師の指導のもと水彩画を勉強しています。 2018年01月22日更新

---

- 2 **パレット・油絵**  
水彩画を通して会員相互の親睦を図ります。 2017年07月09日更新

Narrow your search to certain locations by clicking on the ward of your choice, either from the list or the map of Hiroshima City.

- |            |                            |
|------------|----------------------------|
| ■ 活動内容 :   | ■ Activities :             |
| ■ 活動日時 :   | ■ Time and place :         |
| ■ 活動場所 :   | ■ Where :                  |
| ■ 会員 :     | ■ Members :                |
| ■ 会員層 :    | ■ Target membership :      |
| ■ 会費 :     | ■ Membership fee :         |
| ■ 入会条件 :   | ■ Admission requirements : |
| ■ 設立時期 :   | ■ Established :            |
| ■ 一言 P R : | ■ About us :               |

The information listed usually follows the picture to the left. This can be quite daunting, but head over to <http://ejje.weblio.jp/> or <http://jisho.org/> (or your preferred online dictionary) and start plugging in vocabulary to try to make sense of it all. It'll be worth it!

Remember, the Hiroshima Peace Culture Centre offers a CIR consultation service on the fourth Wednesday of every month (reservations are required). If you are looking for more help finding your new hobby, or even with anything else related to Hiroshima, get in touch!



# City Office Notices

City Office Notices contains selected information from the Hiroshima City Newsletter, *ひろしま市民と市政 Hiroshima Shimin to Shisei*. City Office Notices is published twice a month and available in print at the International Exchange Lounge, and online at our website: <http://www.pcf.city.hiroshima.jp/ircd/english/hiroclubnews>

February 1, 2018

## Topics

- \* Garbage Collection on February 12
- \* Municipal Housing Available
- \* Damaged & Outdated Books for Free
- \* The 2nd Enrollment Application Acceptance Period
- \* Join the National Pension Plan
- \* Allotment Gardens Available
- \* Seeking Sports Event Volunteers
- \* Temporary Closures
- \* Self-Medication Tax Deduction Program Launched

## Garbage Collection on February 12

2月12日(休・月)の家庭ごみの収集(P4)

Combustibles, PET bottles and recyclable plastic will NOT be collected on February 12. However, recyclable garbage, toxic garbage, plastics (other than PET bottles or recyclable plastic such as containers or packaging) and incombustible garbage will be collected according to schedule.

**INQUIRIES:** *Gyomu Daiichi Ka* (Operation Division I) Tel. 504-2220 Fax. 504-2229

## Municipal Housing Available

市営住宅入居者募集(P6)

Qualification guidelines and the list of municipal houses are available at the *Kenchiku Ka* (Architecture Division) of your local ward office, branch office or at the Citizens Service Corner.

**TO APPLY:** Please apply at one of the following divisions or prefectural associations of building maintenance between Wednesday, February 7 and Friday, February 9.

**INQUIRIES:** *Kenchiku Ka* (Architecture Division), Ward Office

Ward Office	Telephone	Fax	Ward Office	Telephone	Fax
Naka	504-2578	541-3835	Asaminami	831-4954	877-2299
Higashi	568-7744	262-6986	Asakita	819-3937	815-3906
Minami	250-8959	252-7179	Aki	821-4928	822-8069
Nishi	532-0949	232-9783	Saeki	943-9744	923-5098

## Damaged & Outdated Books for Free

除籍図書資料の無料配布(P6)

The International Exchange Lounge is discarding foreign language books and Japanese books which are damaged or outdated. We will distribute them for free to anyone who wants them during the following period. Up to 5 books per person. First-come, first-served.

**PERIOD:** Saturday, February 10 – Friday, February 16 9:00 am – 6:00 pm

**PLACE:** International Exchange Lounge, located in the Peace Memorial Park

**INQUIRIES:** International Exchange Lounge Tel. 247-9715 Fax. 242-7452

## The 2<sup>nd</sup> Enrollment Application Acceptance Period

For legal guardians to enroll their children in nursery school from April 2018

保育園などの4月入園の2次受け付け(P5)

For those who do not apply during the 1<sup>st</sup> enrollment acceptance period, applications will also be accepted during the 2<sup>nd</sup> enrollment acceptance period. For details on application or available school information, please check Hiroshima City's website or inquire at *Hoken Fukushi Ka* of ward offices or *Hoiku Shido Ka*.

**INQUIRIES:** *Hoiku Shido Ka* (Childcare Supervisory Division) Tel. 504-2154 Fax. 504-2254

## For those who will turn 20, Join the National Pension Plan

20歳になったら国民年金の届け出を(P4)

In general, anyone who lives in Japan, is over 20 and younger than 60 years old, must enroll in the National Pension Plan (*Kokumin Nenkin*). Even if you are a student you must join the plan. There are some support systems for those who have trouble paying the premiums because of economic reasons. These systems include pay-later plans for students or youth, and partial or total exemption from premiums for others. For details, please consult one of the following divisions.

**INQUIRIES:** *Hoken Nenkin Ka* (Ward Office, National Insurance & Pension Division)

Ward Office	Telephone	Fax	Ward Office	Telephone	Fax
Naka	504-2556	541-3835	Asaminami	831-4931	877-2299
Higashi	568-7712	262-6986	Asakita	819-3910	815-3906
Minami	250-8944	252-7179	Aki	821-4910	822-8069
Nishi	532-0935	232-9783	Saeki	943-9713	923-5098

## Allotment Gardens Available

市民農園などの利用者募集(P5)

The City offers allotment gardens across Hiroshima city.

**WHO:** Those who live or work in Hiroshima City

Allotted Gardens	Details	
<i>Shimin Noen</i>	Large plots with good facilities	
<i>Shimin Saien</i>	Small plots	
<i>Taiken Noen</i>	Lectures are available.	
<i>Miharu Shimin Noen</i>	Hands-on learning programs are available.	Fermentation of Soybean Paste, <i>Miso</i> (You can take <i>Miso</i> back home.) <b>TIME&amp;DATE:</b> 10:00 am, Saturday, March 3
		Planting and Harvesting Potatoes <b>TIME&amp;DATE:</b> 10:00 am, Thursday, March 15

**TO APPLY:** Send an *ofuku-hagaki* (pre-paid reply postcard) with applicants' names, address, telephone number, age and other necessary information to *Norin Suisan Shinko Center* (8-30-12 Fukawa, Asakita-ku 7391751) postmarked by Thursday, February 15. For details, please see the flyer or check *Norin Suisan Shinko Center's* website. Applicants will be selected at random by a drawing of names.

**INQUIRIES:** *Norin Suisan Shinko Center* Tel. 845-4347 Fax. 845-4350

## Seeking Sports Event Volunteers

スポーツイベントボランティア募集(P6)

**WHO:** Those who are 15+ years old on April 1, 2018, except for junior high school students.

**ACTIVITIES:** Event support including ticket checking for events held in Hiroshima City between April 2018 and March 2019. Explanatory meetings will be held in March. Please check *Sports Kyokai's* website.

**TO APPLY:** Send an *ofuku-hagaki* (pre-paid reply postcard) with participants' names, address, telephone number, age, gender and other necessary information including your preferred date and place for the explanatory meeting to *Sports Kyokai* (1-4-15 Kokutaiji-machi, Naka-ku 7300042) before Thursday, February 15.

**INQUIRIES:** *Sports Kyokai* Tel. 243-0579 Fax. 249-3641

## Temporary Closures

臨時休館(P6)

### *Yui Port*

**CLOSED:** Monday, February 12 – Wednesday, February 14  
**INQUIRIES:** *Yui Port* Tel. 248-3320 Fax. 248-4476

### *Kurhaus Yunoyama*

**CLOSED:** Monday, February 5 – Friday, February 9  
**INQUIRIES:** *Sports Kyokai* Tel. 243-0578 Fax. 249-3641

## Self-Medication Tax Deduction Program Launched

新たに「セルフメディケーション税制」が始まります(『市民と市政』2018.1.15 P5)

The Self-Medication Tax Deduction Program has been started with the intention of promoting self-medication, which is being responsible to your own health and medicating yourself without the advice of a physician. This system allows people who buy designated over-the-counter (OTC) medicines\* after January 1, 2017 to apply for a tax refund. Applicants have to meet the following conditions:

1. Applicants need to show proof that they had a vaccination shot, a cancer screening or a medical checkup including *Tokutei-kenko-shinsa* or *Teiki-kenko-shindan*.
2. Applicants need to spend more than 12,000 yen (tax-included) on the OTC medicines\* per year. (The amount exceeding 12,000 yen up to 88,000 yen will be deducted from total gross income amount.)

\*OTC medicines are medicines you can buy without prescriptions. Designated OTC medicines have the following logo on their packaging to show consumers which medicines are eligible for the tax break under the program.



**INQUIRIES:** *Shiminzei Ka* (Municipal Tax Division) Tel. 504-2089 Fax. 504-2129



# Hiroshima Peace Culture Foundation News

Event schedules are subject to change. Please contact event organizers to confirm listed information.

February 2018

## CIR Question & Answer Day

Are you looking for advice about Hiroshima?

Come in for a chat with our CIR, Andrew Dempster!

**DATE & TIME:** Wednesday, February 28 1:30 pm – 3:30 pm

**PLACE:** International Exchange Lounge

(International Conference Center Hiroshima 1F, 1-5 Nakjima-cho, Naka-ku)

**RESERVATIONS ARE REQUIRED:** Reservations can be made in person or by telephone at the International Exchange Lounge Tel. 247-9715 (Lounge open hours 9:00 am – 6:00 pm)

**INQUIRIES:** International Exchange Lounge, International Relations and Cooperation Division, Hiroshima Peace Culture Foundation Tel. 247-9715

## Special Exhibition: The Twinkling Stars Know Everything

Collection of parents' memoirs of their lost children who were students of Hiroshima Itchu Junior High School annihilated by the atomic bomb.

**PERIOD:** Monday, January 1 – Saturday, December 29, 2018

**PLACE:** Hiroshima National Peace Memorial Hall for the Atomic Bomb Victims, B1

**ADMISSION:** Free

**INQUIRIES:** Hiroshima National Peace Memorial Hall for the Atomic Bomb Victims  
Tel. 543-6271 Fax. 543-6273

## Video Screening and A-bomb Legacy Successor's Talk

### Hiroshima Peace Memorial Museum

Open to the public, no reservations required. Please feel free to drop by!

### Video "HIROSHIMA - Massage from Hibakusha"

This is a current video produced in accordance with the East Building's reopening. Approx. 22 min. Provided with English subtitles.

**SCHEDULE:**

8:45 am-	9:15 am-	9:45 am-	10:15 am-	*
3:15 pm-	3:45 pm-	4:15 pm-	4:45 pm-	5:15 pm-

\*11:00 am -3:00 pm: A-bomb  
Legacy Successor's Talk

### A-bomb Legacy Successor's Talk

A-bomb Legacy Successors have taken over the A-bomb survivor's experience and give testimony on behalf of them. A-bomb Legacy Successors offer lectures in which they present the A-bomb survivors' experiences, the reality of the atomic bombing, and desires for peace. Approx. 60 min.

**SCHEDULE:** 11:00 am (Japanese), 12:30 pm (Japanese), 2:00 pm (English)

**PLACE:** Video Theater, 1F, East Building of Hiroshima Peace Memorial Museum

**ADMISSION:** Free

**INQUIRIES:** Curatorial Division, Hiroshima Peace Memorial Museum Tel. 241-4004 Fax. 542-7941  
<http://hpmuseum.jp/?lang=eng>



The **International Conference Center Hiroshima** is used for various purposes such as exhibitions and parties. Its large auditorium, which can accommodate 1,504 people, is ideal for concerts, lectures, and domestic and international conferences. The ICCH also includes the International Conference Hall, as well as small, medium, and large conference rooms. In all, the ICCH has five floors, three above ground and two basement floors.  
Tel. 242-7777 (9:00 am – 9:00 pm) URL: <http://www.pcf.city.hiroshima.jp/icch/english.html>

Please feel free to contact to the International Exchange Lounge at 082-247-9715.

E-Mail: [golounge@pcf.city.hiroshima.jp](mailto:golounge@pcf.city.hiroshima.jp)

February 2018

# Movie Theaters February 2018



Here is a general list of movies being shown in theaters around Hiroshima. Due to unpredictable changes in scheduling, listings are subject to change without notice. Foreign films are usually in their original language with Japanese subtitles. When not specified, the admission is **¥1,800** for adults. Theaters offer various kinds of admission discount services, so please inquire at each theater for more information.

## SALON CINEMA

[Hiroshima Toei Plaza Bldg. 8F, 16-10 Hatchobori, Naka-ku / Tel: 082-962-7772 / URL: <http://www.johakyu.co.jp/>]

- Until Feb. 8 **The Zookeeper's Wife** / '16  
Czech Republic, UK, USA
- From Jan. 26 **Detroit** / '17 USA
- From Feb. 1 **Three Billboards Outside Ebbing, Missouri** / '17 UK, USA
- From Feb. 9 **追捕 / Manhunt** / '17 China
- Feb. 17 – 23 **Sage Femme** / '17 France
- Feb. 17 – 23 **Willkommen bei den Hartmanns** / '16 Germany
- From Feb. 23 **The Beguiled** / '17 USA

## HATCHOZA

[Fukuya Department Store Hatchobori 8F, 6-26 Ebisu-cho, Naka-ku / Tel: 082-546-1158 / URL: <http://www.johakyu.co.jp/>]

- Feb. 3 – 9 **Django** / '17 France
- Feb. 10 – 15 **I, Daniel Blake** / '16 UK, France, Belgium
- From Feb. 16 **The Greatest Showman** / '17 USA

## YOKOGAWA CINEMA Tel : 231-1001

[3-1-12 Yokogawa-cho, Nishi-ku / Tel: 082-231-1001 / URL: <http://yokogawa-cine.jugem.jp/>]

- Feb. 1 – 14 **Neruda** / '16 Chile, Argentina, France, Spain
- Feb. 1 – 7 **What Happened to Monday?** / '16 UK, USA, France, Belgium
- Feb. 8 – 21 **Felicite** / '17 France, Senegal, Belgium, Germany, Lebanon
- Feb. 8 – 21 **El Ciudadano Ilustre** / '16 Argentina, Spain
- Feb. 8 – 14 **9/11** / '17 USA
- Feb. 15 – 21 **海の彼端** / '16 Taiwan, Japan
- Feb. 22 – 28 **日曜日式散步者** / '15 Taiwan
- Feb. 22 – 28 **Ang Babaeng Humayo** / (except Feb. 23) '16 Philippines

## AEON CINEMA HIROSHIMA

[Hiroshima Danbara Shopping Center 6F, 1-3-52 Danbara-minami, Minami-ku / Tel : 082-261-3770 / URL: <http://www.aeoncinema.com/cinema/hiroshima/>]

- From Dec. 15 **Star Wars: The Last Jedi** / '17 USA
- From Jan. 5 **Kingsman: The Golden Circle** / '17 UK
- From Jan. 19 **Geostorm** / '17 USA
- Feb. 3 – 16 **Nocturnal Animals** / '16 USA
- Feb. 3 – 15 **Interlude in Prague** / '17 UK, Czech Republic
- From Feb. 10 **Grave** / '16 France, Belgium
- Feb. 10 – 22 **Les Parapluies de Cherbourg / The Umbrellas of Cherbourg** / '63 France
- From Feb. 16 **The Greatest Showman** / '17 USA
- From Feb. 16 **A Single Rider** / '17 Korea
- Feb. 24 – Mar. 8 **Les Demoiselles de Rochefort / The Young Girls of Rochefort** / '66 France
- From Feb. 24 **妖猫傳** / '18 Japan, China
- From Mar. 1 **Black Panther** / '18 USA

## 109 CINEMAS

[Alpark 3F (north bldg.), 4-7-1 Kusatsu-minami, Nishi-ku / Tel: 05700-002-109 / URL: <http://www.109cinemas.net/Hiroshima>]

- From Dec. 15 **Star Wars: The Last Jedi** / '17 USA
- From Jan. 5 **Kingsman: The Golden Circle** / '17 UK
- From Jan. 12 **Renegades** / '17 France, Germany
- From Jan. 19 **Geostorm** / '17 USA
- From Jan. 27 **The Dark Tower** / '17 USA
- From Feb. 1 **Three Billboards Outside Ebbing, Missouri** / '17 UK, USA
- From Feb. 9 **追捕 / Manhunt** / '17 China
- From Feb. 16 **The Greatest Showman** / '17 USA
- From Feb. 24 **妖猫傳** / '18 Japan, China
- From Mar. 1 **Black Panther** / '18 USA

Please feel free to contact the International Exchange Lounge at 082-247-9715.

E-mail: [golounge@pcf.city.hiroshima.jp](mailto:golounge@pcf.city.hiroshima.jp)

February 2018

**TOHO CINEMAS MIDORII**

[Fuji Grand 3F, 1-5-2 Midorii, Asaminami-ku / Tel : 082-831-8060 / URL: <http://www.tohotheater.jp/>]  
 Adults-¥1,800, University students-¥1,500, From preschoolers (3 years old and under) to High school students-¥1,000,

- From Dec. 15 **Star Wars: The Last Jedi / '17 USA**  
 From Jan. 5 **Kingsman: The Golden Circle / '17 UK**  
 From Jan. 12 **Renegades / '17 France, Germany**  
 From Jan. 19 **Geostorm / '17 USA**  
 From Feb. 9 **追捕 / Manhunt / '17 China**  
 From Feb. 16 **The Greatest Showman / '17 USA**  
 From Feb. 24 **妖猫傳 / '18 Japan, China**  
 From Mar. 1 **Black Panther / '18 USA**

**HIROSHIMA WALD 11**

[AEON Mall Hiroshima Fuchu 4F, 2-1-1 Osu, Fuchu-cho, Aki-gun / Tel : 082-561-0600 / URL: <http://kinezo.jp/pc/wald11>]

- From Dec. 15 **Star Wars: The Last Jedi / '17 USA**  
 From Jan. 5 **Kingsman: The Golden Circle / '17 UK**  
 From Jan. 19 **Geostorm / '17 USA**  
 From Jan. 19 **Paddington 2 / '17 UK**  
 From Jan. 26 **Rings / '17 USA**  
 From Jan. 27 **The Dark Tower / '17 USA**  
 Feb. 2 – 8 **Inhumans / '17 USA**  
 From Feb. 3 **Sleepless / '16 USA**  
 From Feb. 9 **追捕 / Manhunt / '17 China**  
 From Feb. 10 **Starship Troopers: Traitor of Mars / '17 Japan, USA**  
 From Feb. 16 **The Greatest Showman / '17 USA**  
 From Feb. 24 **妖猫傳 / '18 Japan, China**  
 From Mar. 1 **Black Panther / '18 USA**

***Movie Showings at 10 am in the Morning***

- Jan. 27 – Feb. 9 **Bagdad Cafe / '87 West Germany**  
 Feb. 10 – 23 **What's Eating Gilbert Grape / '93 USA**  
 Feb. 24 – Mar. 9 **Bakushu / '51 Japan**  
 Mar. 10 – 23 **Guess Who's Coming to Dinner / '67 USA**

**T-JOY HIGASHI HIROSHIMA**

[Fuji Grand Higashi Hiroshima 3F, 4405 Misonou, Saijo-cho, Higashi Hiroshima-shi / Tel : 082-493-6779 / URL: [http://kinezo.jp/pc/t-joy\\_hiroshima](http://kinezo.jp/pc/t-joy_hiroshima)]

- From Dec. 15 **Star Wars: The Last Jedi / '17 USA**  
 From Jan. 5 **Kingsman: The Golden Circle / '17 UK**  
 From Jan. 19 **Geostorm / '17 USA**  
 From Jan. 27 **The Dark Tower / '17 USA**  
 From Feb. 9 **追捕 / Manhunt / '17 China**  
 From Feb. 16 **The Greatest Showman / '17 USA**  
 From Feb. 17 **Gifted / '17 USA**  
 From Feb. 24 **妖猫傳 / '18 Japan, China**  
 From Mar. 1 **Black Panther / '18 USA**



Please feel free to contact the International Exchange Lounge at 082-247-9715.

E-mail: [golounge@pcf.city.hiroshima.jp](mailto:golounge@pcf.city.hiroshima.jp)

February 2018

# Bilingual TV Programs



February 2018

#1: NHK Sogo	#4: Hiroshima TV
#2: NHK E Tele	#5: Home TV
#3: RCC	#8: TSS

<sup>2</sup> Some changes may occur because of special programming.

## NEWS

### Monday - Sunday

NHK News 7 / 7:00 pm – 7:30 pm (#1)

### Monday - Friday

News Watch 9 / 9:00 pm – 10:00 pm (#1)

## REGULAR PROGRAMS

### Monday

Rachel Khoo's Kitchen Notebook / 11:00 pm – 11:30 pm (#2) <sup>2</sup> Until Feb. 5  
<sup>2</sup> Rerun: Sun., 6:30 pm – 7:00 pm (until Feb. 11)

### Thursday

Through the Wormhole / 10:00 pm – 10:45 pm (#2)  
 TED / 11:00 pm – 11:25 pm (#2)  
<sup>2</sup> Rerun: Sat., 1:25 am – 1:52 am

### Friday

Lectures by Professor Diamond / 10:00 pm – 10:30 pm (#2) <sup>2</sup> Rerun: Mon., 12:45 am – 1:17 am

### Saturday

Dramatic Earth (Documentary Program) / 7:00 pm – 7:45 pm (#2)  
<sup>2</sup> Rerun: Mon., midnight – 12:45 am

## DRAMAS

### Monday

Hawaii Five-0 Season 2 ('11 USA) / 1:25 am – 2:20 am (#4)

### Wednesday

The Thundermans Season 3 ('15 USA) / 7:25 pm – 7:50 pm (#2)

### Saturday

100 Things to Do Before High School ('14 USA) / 6:25 pm – 6:50 pm (#2)

### Sunday

This is Us ('16 USA) / 11:00 pm – 12:30 am (#1) <sup>2</sup> Until the 4<sup>th</sup>



## ANIMATIONS

### Saturday

Curious George / 8:35 am – 9:00 am (#2)  
 SpongeBob SquarePants / 6:00 pm – 6:25 pm (#2)

### Sunday

Thomas & Friends / 5:30 pm – 5:50 pm (#2)

## MOVIES

3<sup>rd</sup> Lone Survivor / '13 USA / 1:20 am – 3:17 am (#3)  
 10<sup>th</sup> Violent City / '70 Italy / 12:45 am – 2:55 am (#3)  
 11<sup>th</sup> Eternal Sunshine of the Spotless Mind / '04 USA / 2:08 am – 4:00 am (#3)  
 16<sup>th</sup> Pan / '15 USA / 9:00 pm – 10:54 pm (#4)  
 17<sup>th</sup> The Equalizer / '14 USA / 12:55 am – 2:52 am (#3)  
 18<sup>th</sup> House of Sand and Fog / '03 USA / 2:08 am – 4:00 am (#3)  
 24<sup>th</sup> 3 Days to Kill / '14 USA / 12:55 am – 3:10 am (#3)  
 25<sup>th</sup> Boys Don't Cry / '99 USA / 2:08 am – 4:00 am (#3)

## SPORTS

© **Boxing: Daigo Higa (JP) x Moises Fuentes Rubio (MX)** <sup>2</sup> Broadcasted in Japanese only  
 4<sup>th</sup> 8:00 pm – 9:00 pm (#8)

© **Tokyo Marathon 2018**  
<sup>2</sup> Broadcasted in Japanese only  
 25<sup>th</sup> 9:00am – 11:50 am (#8)

### © PyeongChang 2018:

Feb. 9 – 25 <sup>2</sup> Broadcasted in Japanese only

**T Please check the official website for more information.**

Official Website:

<https://www.olympic.org/pyeongchang-2018>

9<sup>th</sup> Freestyle Skiing / 9:55 am – 1:00 pm (#3)  
 Figure Skating / 10:00 am – 2:00 pm (#8)  
 Opening Ceremony / 8:00 pm -10:30 pm (#1)  
<sup>2</sup> Rerun: the 10<sup>th</sup>: 8:00 am – 10:00 am (#5)

10<sup>th</sup> Snowboard / 9:35 am – 11: 54 am, 12:15 pm – 12:45 pm, 1:00 pm – 2:30 pm (#1)

Please feel free to contact to the International Exchange Lounge at 082-247-9715.

E-Mail: [golounge@pcf.city.hiroshima.jp](mailto:golounge@pcf.city.hiroshima.jp)

February 2018

- 10<sup>th</sup> **Freestyle Skiing, Ice Hockey / 4:00 pm – 6:45 pm (#1)**  
**Ice Hockey / 4:30 pm – 7:00 pm (#3)**  
**Short Track Speed Skating / 6:55 pm – 9:54 pm (#4)**  
**Cross Country Skiing / 7:30 pm – 9:30 pm (#1)**  
**Ski Jumping / 9:30 pm – 11:20 pm (#1)**  
**Speed Skating / 9:30 pm – 9:50 pm (#2)**
- 11<sup>th</sup> **Snowboard / 9:00 am - noon (#1)**  
**Figure Skating / 9:55 am – 2:55 pm (#4)**  
**Alpine Skiing, Cross Country Skiing, Snowboard / 1:05 pm – 6:45 pm (#1)**  
**Freestyle Skiing / 7:30 pm – 8:00 pm, 8:45 pm – 11:00 pm (#1)**
- 12<sup>th</sup> **Figure Skating, Snowboard / 9:30 am – 11:54 am (#1)**  
**Snowboard / 9:50 am – 11:45 am (#2)**  
**Figure Skating / 12:15 pm – 1:25 pm (#1)**  
**Snowboard / 1:30 pm – 3:00 pm (#8)**  
**Alpine Skiing, Snowboard, Ice Hockey / 1:45 pm – 6:45 pm (#1)**  
**Ice Hockey / 4:30 pm – 7:00 pm (#5)**  
**Figure Skating / 7:30 pm – 8:50 pm (#1)**  
**Ski Jumping / 9:30 pm – 11:20 pm (#1)**
- 13<sup>th</sup> **Snowboard / 9:00 am – 11:54 am (#1)**  
**Snowboard, Alpine Skiing / 12:55 pm – 4:30 pm (#4)**  
**Curling, Alpine Skiing, Snowboard / 1:05 pm – 6:45 pm (#1)**  
**Short Track Speed Skating / 6:55 pm – 7:30 pm (#2), 7:30 pm – 9:30 pm (#1)**
- 14<sup>th</sup> **Curling, Alpine Skiing / 9:00 am – 11:54 am (#1)**  
**Snowboard / 9:00 am – noon (#3)**  
**Alpine Skating, Nordic Combined, Snowboard, Figure Skating / 1:00 pm – 6:45 pm (#4)**  
**Ice Hockey / 4:30 pm – 7:00 pm (#4)**  
**Speed Skating / 6:45 pm – 7:30 pm (#2); 7:30 pm – 8:50 pm (#1)**  
**Curling / 8:00 pm – 10:54 pm (#3)**
- 15<sup>th</sup> **Nordic Combined, Speed Skating, Snowboard / 9:00 am – 12:45 pm (#1)**  
**Curling / 9:05 am – noon (#3)**



**Snowboard, Cross Country Skiing,**

- Figure Skating / 1:05 pm – 6:45 pm (#1)**  
**Alpine Skiing / 7:30 pm – 8:50 pm (#1)**  
**Speed Skating / 10:00 pm – 11:00 pm (#1)**
- 16<sup>th</sup> **Snowboard / 9:00 am – 11:54 am, 12:20 pm – 1:15 pm (#1)**  
**Figure Skating / 9:30 am – 3:00 pm (#3)**  
**Skeleton, Cross Country Skiing, Figure Skating / 1:35 pm – 6:45 pm (#1)**  
**Figure Skating / 7:30 pm – 8:50 pm (#1)**  
**Ski Jumping / 9:00 pm – 11:10 pm (#5)**  
**Speed Skating / 10:00 pm – 11:00 pm (#1)**
- 17<sup>th</sup> **Curling / 8:54 am – noon (#8)**  
**Figure Skating / 9:30 am – 3:00 pm (#1)**  
**Freestyle Skiing, Alpine Skiing / 4:15 pm – 6:45 pm (#2)**  
**Figure Skating, Ski Jumping / 6:56 pm – 11:59 pm (#5)**  
**Figure Skating / 7:30 pm – 8:45 pm (#1)**
- 18<sup>th</sup> **Freestyle Skiing / 9:45 am – 11:54 am (#1)**  
**Freestyle Skiing, Biathlon, Skelton / 1:05 pm – 4:30 pm (#1)**  
**Speed Skating / 7:00 pm – 10:48 pm (#3)**  
**Curling / 8:00 pm – 11:00 pm (#5)**  
**Alpine Skiing, Speed Skating / 9:00 pm – 11:00 pm (#1)**
- 19<sup>th</sup> **Curling / 9:00 am – 11:55 am (#4)**  
**Snowboard / 9:05 am – 11:54 am (#1)**  
**Freestyle Skating, Figure Skating / 1:05 pm – 6:45 pm (#1)**  
**Speed Skating / 7:00 pm – 9:54 pm (#5)**  
**Curling / 8:00 pm – 10:54 pm (#4)**  
**Ski Jumping / 9:20 pm – 11:15 pm (#1)**
- 20<sup>th</sup> **Speed Skating, Figure Skating / 9:00 am – 11:54 am (#1)**  
**Freestyle Skiing / 10:00 am – 11:55 am (#8)**  
**Freestyle Skiing, Figure Skating / 1:05 pm – 6:45 pm (#1)**  
**Nordic Combined / 6:45 pm – 7:30 pm (#2)**
- 20<sup>th</sup> **Short Track Speed Skating / 6:55 pm**

Please feel free to contact to the International Exchange Lounge at 082-247-9715.

E-Mail: [golounge@pcf.city.hiroshima.jp](mailto:golounge@pcf.city.hiroshima.jp)

February 2018



- 8:54 pm (#4)
- Nordic Combined, Free Style Skiing** / 7:30 pm – 8:50 pm (#1)
- Curling** / 7:57 pm – 10:48 pm (#8)
- Nordic Combined, Short Track**
- Speed Skating** / 9:35 pm – 11:00 pm (#1)
- 21<sup>st</sup> **Figure Skating** / 9:00 am – 11:54 am (#1)
- Snowboard, Freestyle Skiing** / 9:30 am – 2:50 pm (#8)
- Figure Skating** / 12:20 pm – 2:30 pm (#1)
- Snowboard, Freestyle Skiing, Alpine Skiing** / 2:45 pm – 6:45 pm (#1)
- Figure Skating** / 7:30 pm – 8:50 pm (#1)
- Speed Skating** / 7:55 pm – 10:54 pm (#4)
- Cross Country Skiing** / 10:00 pm – 11:00 pm (#1)
- 22<sup>nd</sup> **Speed Skating, Alpine Skiing, Snowboard** / 9:00 am – 1:30 pm (#1)
- Alpine Skiing, Freestyle Skiing, Nordic Combined** / 1:45 pm – 6:45 pm (#1)
- Nordic Combined** / 6:55 pm – 7:30 pm (#2), 7:30 pm – 8:50 pm (#1)
- Short Track Speed Skating** / 7:00 pm – 19:54 pm (#8)
- Short Track Speed Skating** / 10:00 pm – 11:00 pm (#1)
- 23<sup>rd</sup> **Snowboard, Free Style Skiing** / 9:05 am – 11:54 am (#8)
- Figure Skating** / 9:30 am – 2:30 pm (#5)
- Freestyle Skiing, Alpine Skiing** / 1:05 pm – 6:45 pm (#1)
- Speed Skating** / 6:55 pm – 7:30 pm (#2), 7:30 pm – 8:50 pm (#1)
- Figure Skating** / 7:00 pm – 9:49 pm (#8)
- Figure Skating** / 10:00 pm – 11:00 pm (#1)
- 24<sup>th</sup> **Snowboard** / 9:30 am – 11:54 am (#1)
- Snowboard** / 10:00 am – 2:15 pm (#5)
- Alpine Skiing** / 4:00 pm – 6:45 pm (#1)
- Speed Skating** / 7:00 pm – 11:10 pm (#8)
- Cross Country Skiing** / 7:30 pm – 8:45 pm (#1)
- Ice Hockey** / 9:00 pm – midnight (#1)
- 25<sup>th</sup> **Ice Hockey** / 1:05 pm – 4:00 pm (#1)

**Figure Skating** / 5:00 pm – 6:45 pm (#1)

**Closing Ceremony** / 8:00 pm – 9:00 pm (#2), 9:00 pm – 10:00 pm (#1)



Please feel free to contact to the International Exchange Lounge at 082-247-9715.

E-Mail: [golounge@pcf.city.hiroshima.jp](mailto:golounge@pcf.city.hiroshima.jp)

February 2018

# Concerts & Plays



## Ticket Offices

- j EDION Play Guide (SUNMALL, 1F) (Kamiya-cho, Naka-ku; Tel. 247-5111)
- k YAMAHA Music (Kamiya-cho, Naka-ku; Tel. 244-3779 Closed on the 1<sup>st</sup> & the 3<sup>rd</sup> Wednesdays)
- l Hiroshima Yume Plaza (Hondori, Naka-ku; Tel. 544-1122 Closed on Wednesdays)
- m Kawai Hiroshima (2-2-6 Kamiya-cho, Naka-ku; Tel. 243-9291 Closed on Mondays)
- n Fukuya Department Store, Hatchobori (7F) (Ebisu-cho, Naka-ku; Tel. 246-6111)
- o Fukuya Department Store, Hiroshima Station (7F) (Matsubara-cho, Minami-ku; Tel. 568-3111)
- p Alpark Tenmaya (3F) (Inokuchi-myojin, Nishi-ku; Tel. 501-1111)
- q Hiroshima Arts Gakki (Hatchobori, Naka-ku; Tel. 227-6601)

Date / Starting Time (Opening Time) / Venue / Ticket Price / Tickets Go on Sale Date / Ticket Offices / Inquiries

♪ Event schedules are subject to change.

Please contact the event office before you go. ♪

## February

### ⑥ Hiroshima Symphony Orchestra: Bouquet of Music HSO Masterpiece Concert ~ Winter ~

*(Beethoven: Coriolan, Overture Op. 62; Beethoven: Piano Concerto No. 5 in E-flat major Op. 73 "Emperor"; Stravinsky: The Firebird (1945 version))*

3<sup>rd</sup> Sat. / 3:00 pm (2:00 pm) / International Conference Center Hiroshima, Phoenix Hall / S-¥4,200 Pair tickets (S seats)-¥6,400 A-¥3,200 B-¥2,200 Students-¥1,500 (Student tickets are only sold at the Hiroshima Symphony Orchestra Office.) / Now on sale / j , n o t ^ , Lawson, Ticket PIA, Chugoku Shimbun & Hiroshima Symphony Orchestra Office / Hiroshima Symphony Orchestra Office 082-532-3080 E-mail: info@hirokyo.or.jp  
- Conductor: Shigeo Genda / Piano: Tomoharu Ushida

### ⑥ The Brian Setzer Orchestra Japan Tour

7<sup>th</sup> Wed. / 7:00 pm (6:30 pm) / JMS Aster Plaza / ¥9,800 / Now on sale / • , Lawson, Ticket PIA, e+ / TSS Event Office 082-253-1010 (Mon. – Fri., 10 am – 6 pm); Yumebanchi Hiroshima 082-249-3571 (Mon. – Fri., 11 am – 7 pm)

### ⑥ Hiroshima Symphony Orchestra: The 377<sup>th</sup> Subscription Concert

*(Yasushi Akutagawa: Music for Symphony Orchestra; Prokofiev: Piano Concerto No. 3 in C major Op. 26; Schumann: Symphony No. 4 in D minor Op. 120)*

9<sup>th</sup> Fri. / 6:45 pm (5:45 pm) / Hiroshima Bunka Gakuen HBG Hall / S-¥5,200 A-¥4,700 B-¥4,200 Students-¥1,500 (Student tickets are only sold at the Hiroshima Symphony Orchestra Office.) /

Now on sale / j , n o t ^ , Lawson, Ticket PIA, Chugoku Shimbun & Hiroshima Symphony Orchestra Office / Hiroshima Symphony Orchestra Office 082-532-3080 E-mail: info@hirokyo.or.jp  
- Conductor: Tatsuya Simono  
Piano: Hisako Kawamura

### ⑥ Hiroshima Symphony Orchestra: An Evening of Peace Concert Stage 2

*(Beethoven (arr. Mahler): String Quartet No. 11 in F minor Op. 95 "Quartetto Serioso"; Beethoven: Piano Concerto No. 2 in B-flat major Op. 19; Beethoven: Violin Concerto in D major Op. 61)*

12<sup>th</sup> Mon. / 3:00 pm (2:00 pm) / Hiroshima Bunka Gakuen HBG Hall / S-¥7,000 A-¥6,000 Students-¥3,000 (Student tickets are only sold at the Hiroshima Symphony Orchestra Office.) / Now on sale / j , n o t ^ , JMS Aster Plaza, Chugoku Shimbun & Hiroshima Symphony Orchestra Office / Hiroshima Symphony Orchestra Office 082-532-3080 E-mail: info@hirokyo.or.jp  
- Conductor: Tsugio Tokunaga / Violin: Gidon Kremer / Piano: Lucas Debargue / Kremerata Baltica

### ⑥ The Cello Ensemble of the Hiroshima Symphony Orchestra: Concert Vol. 1

14<sup>th</sup> Wed. / 6:30 pm (6:00 pm) / JMS Aster Plaza / Adults: Advance-¥3,000 At the door-¥3,500; Students-¥1,500 (all non-reserved seats) / Now on sale / j t , JMS Aster Plaza / 090-9818-3849 (Kumazawa) E-mail: stanzeleit@gmail.com



Please feel free to contact the International Exchange Lounge at 082-247-9715.

E-mail: golounge@pcf.city.hiroshima.jp

February 2018

NEW!

### ☺ Masaki Ueno Spring Concert

16<sup>th</sup> Fri. / 6:30 pm / Aqua Luxe Hall, PARTE B1F / Adults-¥3,000 Students-¥2,000 / Please ask the concert organizer for ticket information. / 090-5168-2848 (Ueno)  
- Violin & piano concert

### ☺ Cinq-Sept-Réunion

16<sup>th</sup> Fri. / 7:00 pm (6:30 pm) / Aki Kumin Bunka Center / Advance: Adults-¥2,000 High school students and under-¥1,000; At the door: Adults-¥2,500 High school students and under -¥1,500 / Now on sale / JMS Aster Plaza, Kumin Bunka Centers / Aki Kumin Bunka Center 082-824-1330 (closed on Mondays)  
- This is a flute, piano & soprano concert

### ☺ Yumi Tanizaki Piano Recital

17<sup>th</sup> Sat. / 3:00 pm (2:30 pm) / Kawai Hiroshima Concert Salon "Pace" / ¥2,500 / Now on sale / , / Kawai Hiroshima 082-243-9291 (10:00 am – 6:30 pm; closed on Mondays)

### ☺ Hiroshima Symphony Orchestra, Discovery Series: Dämmerung in Wien

(Suppe: *Pique Dame, Overture*; Webern: *Passacaglia Op. 1*; Schubert: *Symphony No. 4 in C minor D417 "Tragic"*)  
22<sup>nd</sup> Thurs. / 6:45 pm (5:45 pm) / JMS Aster Plaza / S-¥5,200 A-¥4,200 B- ¥3,200 Students-¥1,000 (Student tickets are only sold at the Hiroshima Symphony Orchestra Office.) / Now on sale / j , n o † ^ , Lawson, Ticket PIA, Chugoku Shimbun, JMS Aster Plaza & Hiroshima Symphony Orchestra Office / Hiroshima Symphony Orchestra Office 082-532-3080 E-mail: info@hirokyo.or.jp  
- Conductor: Tatsuya Shimono

NEW!

### ☺ Taiko (traditional Japanese drums) Performance by Kaburaya

25<sup>th</sup> Sun. / 1:30 pm (1:00 pm) / Hiroshima City Seishonen Center / Free admission / Executive Committee 082-509-0320 E-mail: info@kaburaya.net

### ☺ Arch Enemy Japan Tour 2018

27<sup>th</sup> Tue. / 7:00 pm (6:00 pm) / Hiroshima Club Quattro / ¥7,500 / Now on sale / j , Club Quattro, e+, Ticket PIA, Lawson, Tower Records Hiroshima / Hiroshima Club Quattro 082-542-2280



## March

### ☺ Marimba Paradise Vol. 3: Sounds of Marimba

1<sup>st</sup> Thurs. / • 2:00 pm (1:30 pm) , 7:00 pm (6:30 pm) / Nishi Kumin Bunka Center / Advance-¥1,500 At the door-¥2,000 (all non-reserved seats) / Now on sale / JMS Aster Plaza, Kumin Bunka Centers / Nishi Kumin Bunka Center 082-234-1960 (9 am – 9 pm; closed on Mondays)

### ☺ The 37<sup>th</sup> TOSHIBA Grand Concert 2018: BBC Symphony Orchestra conducted by Sakari Oramo

2<sup>nd</sup> Fri. / 7:00 pm (6:30 pm) / Ueno Gakuen Hall / S-¥12,000 A-¥9,000 B-¥8,000 C-¥6,000 Students-¥4,000 <sup>2</sup> Student ID will be required on the concert day. / Now on sale / • † ‡ , Lawson, Ticket PIA, Seven-Eleven / TSS Event Office 082-253-1010 (Mon. – Fri., 10 am – 6 pm)  
- Violin: Alina Pogostkina

### ☺ Hiroshima Symphony Orchestra: The 378<sup>th</sup> Subscription Concert

(J. Strauss II: *Die Fledermaus, Overture*; Prokofiev: *Cinderella, Suite No. 1 Op. 107*; Ponchielli: *La Gioconda, Dance of the Hours*; Ravel: *Bolero*)  
3<sup>rd</sup> Sat. / 3:00 pm (2:00 pm) / Hiroshima Bunka Gakuen HBG Hall / S-¥5,200 A-¥4,700 B-¥4,200 Students-¥1,500 (Student tickets are only sold at the Hiroshima Symphony Orchestra Office.) / Now on sale / j , n o † ^ , Lawson, Ticket PIA, Chugoku Shimbun & Hiroshima Symphony Orchestra Office / Hiroshima Symphony Orchestra Office 082-532-3080 E-mail: info@hirokyo.or.jp  
- Conductor: Jesús López-Cobos

### ☺ Jesus Christ Superstar [Jerusalem Version] by Gekidan Shiki

• 5<sup>th</sup> Mon. , 6<sup>th</sup> Tue. / • the 5<sup>th</sup>: 7:00 pm , the 6<sup>th</sup>: 2:00 pm / Ueno Gakuen Hall / S-¥8,640 A-¥6,480 B-¥3,240 / Now on sale / Ticket reservations: Shiki On-line Ticket <http://489444.com>; Telephone 0120-489444 (10 am – 6 pm) / Gekidan Shiki Hiroshima Office 082-503-3411 (Mon. – Sat. except national holidays)  
- Gekidan Shiki (Shiki Theatre Company) is one of the famous theater companies in Japan.  
This musical will be played in Japanese.

NEW!

### ☺ Sinske Marimba Concert: Classical Lovers

8<sup>th</sup> Thurs. / 2:30 pm (2:00 pm) / Nishi Kumin Bunka Center / Adults-¥2,500 Students & Seniors-¥1,500 / Now on sale / • † , e+ / Munique 03-5786-2244 (weekdays, 1 pm – 5 pm)

Please feel free to contact the International Exchange Lounge at 082-247-9715.

E-mail: [golounge@pcf.city.hiroshima.jp](mailto:golounge@pcf.city.hiroshima.jp)

February 2018

NEW!

### € Cinema Music with Sarah Alainn

10<sup>th</sup> Sat. / 4:00 pm (3:30 pm) / International Conference Center Hiroshima, Phoenix Hall / S-¥7,000 A-¥6,000 / Now on sale / j †, Lawson, Ticket PIA, e+, Seven-Eleven / HOME Event Center 082-221-7116 (Mon. – Fri., 10 am – 5 pm)

### € NHK Symphony Orchestra, Tokyo in Kure

10<sup>th</sup> Sat. / 4:30 pm – 6:30 pm (3:45 pm) / Kure City Bunka Hall / S-¥6,000 A-¥5,000 B-¥4,000 C-¥3,000 / Now on sale / • ... †, Lawson / NHKSO Concert Hello Dial 050-5542-8600 (8 am – 10 pm); NHK Planet Chugoku Branch 082-244-1125 (Mon. – Fri., 9:30 am – 6:00 pm)

- Conductor: Stefan Blunier / Piano: Ayako Uehara

### € The 22<sup>nd</sup> Hiroshima International Opera Studio Performance: Madama Butterfly (by G. Puccini)

• 10<sup>th</sup> Sat. , 11<sup>th</sup> Sun. / • the 10<sup>th</sup>: 5:30 pm (4:30 pm) Pre-talk show: 5:15 pm; , the 11<sup>th</sup>: 2:00 pm (1:00 pm) Pre-talk show-1:45 pm / JMS Aster Plaza / **Advance:** Adults-¥6,500 Students (junior high school students and above-¥4,500 Elementary school students-¥2,000; **At the door** Adults-¥7,000 Students (junior high school students and above -¥5,000 Elementary school students-¥2,500 / Now on sale / • „ , JMS Aster Plaza / Hiroshima International Opera Studio 080-5232-4301

- This will be played in Italian.

### € Saeki Classical Music Concert: Pictures at an Exhibition

NEW!

11<sup>th</sup> Sun. / 2:00 pm (1:30 pm) / Saeki Kumin Bunka Center / Advance: Adults & University students-¥1,000 High school students-¥700; At the door: Adults & University students-¥1,200 High school students-¥800 / Now on sale / • ‡, JMS Aster Plaza, Kumin Bunka Centers, chugoku Shimbun / Saeki Kumin Bunka Center 082-921-7550 (9 am – 9 pm, closed on Mondays)

- A live painting performance will also be held on the stage.

### € Shadow Play & Traditional Japanese Instruments Concert

NEW!

€ 17<sup>th</sup> Sat. • 18<sup>th</sup> Sun. / • 2:00 pm (1:30 pm) , 5:00 pm (4:30 pm) / Higashi Kumin Bunka Center / Advance-¥1,500 At the door-¥1,800 / Now on sale / Ticket reservations & Inquiries: Higashi Kumin Bunka Center 082-264-5551 (closed on Mondays)



### € Kawai Salon Concert 2018: Runa Kimura (violin) & Sato Ohara (piano)

18<sup>th</sup> Sun. / 2:00 pm (1:30 pm) / Kawai Hiroshima Concert Salon "Pace" / ¥1,000 / Ticket reservations & Inquiries: Summer Concert Executive Committee 0829-39-6902 (Kojima); Kawai Hiroshima 082-243-9291 (Aikawa)

NEW!

### € Aki Takahashi Piano Recital

21<sup>st</sup> Wed. / 2:00 pm (1:30 pm) / Minami Kumin Bunka Center / Adults & University students: Advance-¥3,500 At the door-¥4,000; High school students and under-¥2,000 <sup>2</sup> Tickets for the high school students and under will be sold on the concert day only. / Now on sale / • „ ..., Minami Kumin Bunka Center / Mimi no Sora 090-7574-3474 E-mail: mnos2015@excite.co.jp

### € Lotus String Quartet

24<sup>th</sup> Sat. / 4:00 pm (3:30 pm) / Elisabeth University of Music, Cecilia Hall / ¥3,500 / Now on sale / Ticket PIA / KCM Ticket Service 0570-00-8255 (Mon. – Fri., 10am – 6 pm; Sat., 10 am – 3 pm) HP: <http://www.kojimacm.com>

### € Hiroshima City Opera 2018

#### The 10<sup>th</sup> Performance: Aida (by G. Verdi)

€ 24<sup>th</sup> Sat. • 25<sup>th</sup> Sun. / € the 24<sup>th</sup>: 5:00 pm (4:00 pm) • the 25<sup>th</sup>: 2:00 pm (1:00 pm) / JMS Aster Plaza / Reserved seats: SS-¥7,000 S-¥6,000; Non-reserved seats-¥5,000; Students-¥3,500 <sup>2</sup> Student tickets will be sold at the door only. / Now on sale / j , JMS Aster Plaza / Hiroshima City Opera Promotion Committee 090-7897-0888

- This will be played in Italian with Japanese subtitles.

## April

### € Special Kabuki Performance 2018 by Kankuro Nakamura & Shichinosuke Nakamura

1<sup>st</sup> Sun. / **SOLD OUT** 3:00 pm (2:30 pm) / JMS Aster Plaza / S-¥6,500 A-¥7,500 / Now on sale / • †, Lawson, Ticket PIA, e+, Seven-Eleven / TSS Office 082-253-1010

### € Berlin Komische Oper: Die Zauberflöte (by W. A. Mozart)

11<sup>th</sup> Wed. / € 2:00 pm (1:15 pm) • 7:00 pm (6:15 pm) / Hiroshima Bunka Gakuen HBG Hall / S-¥26,000 A-¥21,000 B-¥17,000 C-¥13,000 D-¥9,000 SS-¥32,000 / Now on sale / • , Lawson, Seven-Eleven, FamilyMart, CircleK Sunkus, Ticket PIA / Kyodo Nishinohon 092-714-0159 (Mon. – Fri., 10 am – 7 pm; Sat., 10 am – 5 pm)

Please feel free to contact the International Exchange Lounge at 082-247-9715.

E-mail: [golounge@pcf.city.hiroshima.jp](mailto:golounge@pcf.city.hiroshima.jp)

February 2018



NEW!

€ **The 2<sup>nd</sup> Keiko Abe International Junior  
Marimba Music Festival in Hiroshima**

15<sup>th</sup> Sun. / 2:00 pm – 4:00 pm (1:30 pm) /  
Hiroshima Kenmin Bunka Center / Advance-  
¥2,500 At the door-¥2,900 (all non-reserved seats)  
/ Now on sale / •, Hatsukaichi Bunka Hall  
Sakurapia, Hiroshima Kenmin Bunka Center / 080-  
1903-6067 (Inoue)  
- Performers: Benjamin Hellert (USA), Steije Maurer  
(Netherlands) & Hiroshima Junior Marimba Ensemble  
(Japan)

NEW!

€ **"Mezamashi Classics" in Kure**

15<sup>th</sup> Sun. / 3:00 pm (2:30 pm) / Kure City Bunka  
Hall / S-¥5,500 A-¥4,500 / Now on sale /  
Lawson, Ticket PIA, e+, Seven-Eleven, • † / TSS  
Event Office 082-253-1010 (weekdays, 10 am – 6  
pm); Kure City Bunka Hall 0823-25-7878

May

NEW!

€ **Charles Richard-Hamelin Piano Recital:  
All Chopin Program**

13<sup>th</sup> Sun. / 2:00 pm (1:30 pm) / Hatsukaichi Bunka  
Hall Sakurapia / ¥4,500 / From Sat., February 3 /  
• † ‡, Sakurapia, Lawson, Ticket PIA /  
Hatsukaichi Bunka Hall Sakurapia 0829-20-0111 (9  
am – 7 pm, closed on Mondays); HOME Event  
Center 082-221-7116 (weekdays, 10 am – 5 pm)

NEW!

€ **Dansu 2018**

31<sup>st</sup> Thurs. / 7:00 pm (6:30 pm) / JMS Aster Plaza /  
¥6,000 / Now on sale / Lawson, Ticket PIA, e+,  
Seven-Eleven, •, JMS Aster Plaza / TSS Office  
082-253-1010 (weekdays, 10 am – 6 pm)  
- Contemporary dance performance

July

NEW!

€ **Prague Radio Symphony Orchestra & Dai  
Miyata (cello)**

6<sup>th</sup> Fri. / 6:45 pm (6:15 pm) / Ueno Gakuen Hall /  
SS-¥12,000 S-¥10,000 A-¥8,000 B-¥6,000 /  
From Sat., February 3 / • † / Green Concert  
Hiroshima 082-241-8868



Please feel free to contact the International Exchange Lounge at 082-247-9715.

E-mail: [golounge@pcf.city.hiroshima.jp](mailto:golounge@pcf.city.hiroshima.jp)

February 2018





# Event Halls

## ® Hiroshima Bunka Gakuen HBG Hall 広島文化学園 HBG ホール

(3-3 Kako-machi, Naka-ku, Hiroshima Tel. 082-243-8881)

† Take the No.24 bus bound for Yoshijima Eigyocho (吉島営業所) and get off at Kako-machi (加古町).  
Walking time to destination: 2 minutes

## ® Hiroshima Kenmin Bunka Center 広島県民文化センター

(1-5-3 Ote-machi, Naka-ku, Hiroshima Tel. 082-245-2311)

† Take a streetcar or a bus and get off at Hondori (本通) or Kamiya-cho (紙屋町). Walking time to destination is 5 minutes.

## ® JMS Aster Plaza JMS アステールプラザ

(4-17 Kako-machi, Naka-ku, Hiroshima Tel. 082-244-8000)

† Take the No.24 bus bound for Yoshijima Eigyocho (吉島営業所) and get off at Kako-machi (加古町).  
Walking time to destination is 2 minutes.

## ® Ueno Gakuen Hall 上野学園ホール

(19-1 Hakushima-kita-machi, Naka-ku, Hiroshima Tel. 082-223-6367)

† Take the Astramline bound for Koiki Koen-mae (広域公園前) or Chorakuji (長楽寺) Station and get off at Hakushima (白島) Station. Walking time to destination is 3 minutes.

## ® Hiroshima Kokusai Kaigijou (International Conference Center Hiroshima), Phoenix Hall 広島国際会議場フェニックスホール

(1-5 Nakajima-cho, Naka-ku, Hiroshima Tel. 082-242-7777)

† Get on a Hiroshima Bus bound for Yoshijima and get off at Heiwa Kinenkoen (平和記念公園).  
† From Chuden-mae (中電前) or Genbaku Dome-mae (原爆ドーム前) Streetcar Stop, walking time to destination is 5 minutes.

## ® Hiroshima Club Quattro 広島クラブクアトロ

(10-1 Hondori, Naka-ku, Hiroshima (Hiroshima PARCO Hon-kan 10F) Tel. 082-542-2280)

† From Hatchobori (八丁堀) Streetcar Stop, walking time to destination is 5 minutes.

## ® Hiroshima Green Arena 広島グリーンアリーナ

(4-1 Moto-machi, Naka-ku, Hiroshima Tel. 082-228-1111)

† From Kamiya-cho-nishi (紙屋町西) or Kamiya-cho-higashi (紙屋町東) Streetcar Stop, walking time to destination is 5 minutes.

## ® Hiroshima Sun Plaza 広島サンプラザ

(3-1-1 Shoko Center, Nishi-ku, Hiroshima Tel. 082-278-5000)

† Take a train or streetcar to Miyajima and get off at JR Shin-inokuchi (新井口) Station (JR Sanyo Line) or Shoko Center-iriguchi (商工センター入り口) Streetcar Stops (Hiroden Miyajima Line). Walking time to destination is 5 minutes.

## ® Elisabeth University of Music エリザベト音楽大学

(4-15 Nobori-machi, Naka-ku, Hiroshima Tel. 082-221-0918)

† From Kanayama-cho (銀山町) or Jogakuin-mae (女学院前) Streetcar Stop, walking time to destination is 10 minutes.

## ® Higashi Kumin Bunka Center 東区民文化センター

(10-31 Higashi-kaniya-cho, Higashi-ku, Hiroshima Tel. 082-264-5551)

† From the Shinkansen Exit of the JR Hiroshima (広島) Station, walking time to destination is 10 minutes.

Please feel free to contact the International Exchange Lounge at 082-247-9715.

E-mail: [golounge@pcf.city.hiroshima.jp](mailto:golounge@pcf.city.hiroshima.jp)

February 2018

® **Nishi Kumin Bunka Center 西区民文化センター**

(6-1 Yokogawa Shin-machi, Nishi-ku, Hiroshima Tel. 082-234-1960)

† From JR Yokogawa (横川) Station, walking time to destination is 5 minutes.

® **Asaminami Kumin Bunka Center 安佐南区民文化センター**

(22-17 Nakasuji 1-chome, Asaminami-ku, Hiroshima Tel. 082-879-3060)

† From *Astramline* Nakasuji (中筋) Station, walking time to destination is 5 minutes.

® **Saeki Kumin Bunka Center 佐伯区民文化センター**

(6-1-10 Itsukaichi-chuo, Saeki-ku, Hiroshima Tel. 082-921-7550)

† From Hiroshima Bus Center (*Sogo* Hiroshima, 3F), take a bus to Yakushigaoka-danchi (薬師が丘団地), Shikigaoka-danchi (四季が丘団地), Higashi-kannondai-danchi (東観音台団地) or Ajinadai-kita (阿品台北) and get off at Saeki-kumin Bunka Center-mae (佐伯区民文化センター前). Walking time to destination is 1 minute.

® **Aki Kumin Bunka Center 安芸区民文化センター**

(2-16 Funakoshi-minami 3-chome, Aki-ku, Hiroshima Tel. 082-824-1330)

† From JR Kaitaichi (海田市) Station (JR Sanyo Line), walking time to destination is 5 minutes.

® **Blue Live Hiroshima ブルーライブ広島**

(3-12-69 Ujina Kaigan, Minami-ku, Hiroshima Tel. 082-250-5522)

† Take a streetcar for Hiroshima-ko (No. 1, 3 or 5) and get off at Kaigan-dori (海岸通). Walking time to destination is 5 minutes.

® **PARTE エンジェルパルテ**

(7-25 Fukuromachi, Naka-ku, Hiroshima Tel. 082-247-5588)

† From Hondori (本通) or Tatemachi (立町) Streetcar Stop, walking time to destination is 10 minutes

® **Hiroshima City Seishonen Center 広島市青少年センター**

(5-61 Motomachi, Naka-ku, Hiroshima Tel. 082-228-0447)

† From Genbaku Dome-mae (原爆ドーム前) Streetcar Stop, walking time to destination is 3 minutes.

® **Kawai Hiroshima Concert Salon "Pace" カワイ広島コンサートサロン "パーチェ"**

(2-2-6 Kamiya-cho, Naka-ku, Hiroshima Tel. 082-243-9291)

† From Hondori (本通) Streetcar Stop, walking time to destination is 2 minutes.

® **Hiroshima Ushita Church 広島牛田教会**

(2-7-34 Ushita-naka, Higashi-ku, Hiroshima Tel. 082-222-7727)

† From JR Hiroshima (広島) Station, walking time to destination is 25 minutes.

® **Hatsukaichi Bunka Hall Sakurapia はつかいち文化ホールさくらびあ**

(1-11-1 Shimo-hera, Hatsukaichi City Tel. 0829-20-0111)

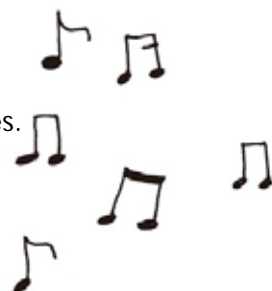
† Take a train on the JR Sanyo Line bound for Iwakuni and get off at JR Miyauchi Kushido (宮内串戸) Station. Walking time to destination is 15 minutes.

† Take a streetcar on the Hiroden Miyajima Line and get off at Hatsukaichi Shiyakusho-mae (廿日市市役所前). Walking time to destination is 8 minutes.

® **Kure City Bunka Hall 呉市文化ホール**

(3-10-1 Chuo, Kure City Tel. 0823-25-7878)

† From JR Kure (呉) Station (JR Kure Line), walking time to destination is 7 minutes.



Please feel free to contact the International Exchange Lounge at 082-247-9715.

E-mail: [golounge@pcf.city.hiroshima.jp](mailto:golounge@pcf.city.hiroshima.jp)

February 2018



**A: Adults U: University Students H: High School Students**  
**J: Junior High School Students E: Elementary School Students**  
**S: Seniors (65 years old and above - Identification showing your date of birth is required.)**

<sup>2</sup> Generally, admission is allowed up to 30 min. prior to closing. <sup>2</sup>

### **Hiroshima Museum of Art**

Address: 3-2 Moto-machi, Naka-ku, Hiroshima City  
 Tel: 082-223-2530  
 Hours: 9:00 am – 5:00 pm  
 Closed: Mondays (except during special exhibitions)  
 URL: <http://www.hiroshima-museum.jp>

### **Special Exhibition**

#### **i Two Special Exhibitions**

**㊦ The World of Hiroshige: Fifty-three Stations of the Tōkaidō Road and Four Seasons in Edo**

##### **• Netsuke**

Period: Wed., Jan. 3 – Mon., Feb. 12, 2018  
 Admission Fee:

A -¥1,300 (¥1,100), S-¥1,100,  
 U&H-¥1,000 (¥800), J&E-¥600 (¥400)  
<sup>2</sup> Advance ticket prices shown in ( ).

#### **i Mucha: Alfons Mucha's Women**

Period: Sat., Feb. 24 – Sun., Apr. 8  
 Admission Fee:

A -¥1,300 (¥1,100), S-¥1,100,  
 U&H-¥1,000 (¥800), J&E-¥600 (¥400)  
<sup>2</sup> Advance ticket prices shown in ( ).

### **Collection Exhibition**

#### **i Modern European Paintings**

Period: Year-round

### **Hiroshima City Museum of Contemporary Art**

Address: 1-1 Hijiyama Koen, Minami-ku, Hiroshima City  
 Tel: 082-264-1121  
 Hours: 10:00 am – 5:00 pm  
 Closed: Mondays (except national holiday)  
 URL: <http://www.hcmca.cf.city.hiroshima.jp/>

### **Special Exhibition**

#### **i Binding Threads / Expanding Threads: The Art of Creating "Between-ness"**

Period: Until Sun., Mar. 4

Admission Fee: A-¥1,030 (¥820), U-¥720 (¥620), S&H-¥510 (¥410), J & under-Free  
<sup>2</sup> Advance ticket prices shown in ( ).

### **Collection Exhibition**

Admission Fee: A-¥360 / U-¥270 / S&H-¥170 / J & under- Free

Holders of special exhibition admission tickets are also entitled to view the collection exhibition.

#### **i 2018 – 1: Collection Exhibition**

Period: From Sat., Feb. 24

### **Video Art Program** (Free admission)

#### **i A Window to the World [The 59<sup>th</sup> Program]: Erin Coates**

Period: Tue., Jan. 16 – Sat., Mar. 31

### **Hiroshima MOCA Monthly Workshop**

**\$ This is an art program in which the museum selects one particular material and visitors are free to make anything with it. Reservations are not required. You can join the workshop on the event day of.**

Date: Sun., Feb. 18 & Mar. 18

Time: j 10:00 am – noon

k 2:00 pm – 4:00 pm

Participation Fee: Free

### **Hiroshima Prefectural Art Museum**

Address: 2-22 Kaminobori-cho, Naka-ku, Hiroshima City

Tel: 082-221-6246

Hours: 9:00 am – 5:00 pm

<sup>2</sup> Open until 8:00 pm on Fridays (Apr. – Oct.)

<sup>2</sup> Open until 7:00 pm on Fridays (Nov. – Mar.)

Closed: February 19

URL: <http://www.hpam.jp/>

### **Special Exhibition**

#### **i Play with Ukiyo-e: Children's and Toy Ukiyo-e in the Edo Period from the Collection of Kumon**

Period: Fri., Jan. 5 – Mon., Feb. 12

Admission Fee:

A-¥1,200 (¥1,000), U&H-¥800 (¥600), J&E-¥500 (¥300)

<sup>2</sup> Advance ticket prices shown in ( ).

Please feel free to contact the International Exchange Lounge at 082-247-9715.

E-mail: [golounge@pcf.city.hiroshima.jp](mailto:golounge@pcf.city.hiroshima.jp)

February 2018

¡ **The 64<sup>th</sup> Japan Traditional *Kôgei* (Art Crafts) Exhibition**

Period: Fri., Feb. 23 – Sun., Mar. 11  
Admission Fee: A-¥700, U&H-¥400,  
J & under-Free

**Collection Exhibition**

Admission Fee (all exhibitions):  
A-¥510, U-¥310, H & under-Free  
Holders of special exhibition admission tickets  
are also entitled to view the Museum's Collection  
exhibits.

¡ **Shisui Rokkaku Collection: Hiroshima's  
Lacquerware Pioneer ~ New Collection  
Artworks, Donated in 2016 ~**

Period: Tue., Jan. 2 – Sun., Apr. 15

**Kure Municipal Museum of Art**

Address: Irifuneyama Koen, Saiwai-cho, Kure City  
Tel: 0823-25-2007  
Hours: 10:00 am – 5:00 pm  
Closed: Tuesdays (except national holidays)  
URL: <http://kure-bi.jp/>

**Special Exhibition**

¡ **Museum's History**

Period: Sat., Jan. 6 – Mon., Feb. 12  
Admission Fee: A-¥800, U&H-¥500,  
J&E-¥300

**Other Exhibition**

¡ **Life**

Period: Fri., Feb. 23 – Mon., Mar. 26  
Admission Fee: A&U-¥300, H-¥180,  
J&E-¥120

**Fukuyama Museum of Art**

Address: 2-4-3 Nishi-machi, Fukuyama City  
Tel: 084-932-2345  
Hours: 9:30 am – 5:00 pm  
Closed: Mondays (except national holidays)  
HP: [http://www.city.fukuyama.hiroshima.jp/  
site/fukuyama-museum/](http://www.city.fukuyama.hiroshima.jp/site/fukuyama-museum/)

**Special Exhibition**

¡ **Modern Japanese Paintings: Insho  
Domoto & His Descendants**

Period: Sat., Jan. 13 – Sun., Mar. 4  
Admission Fee: A&U-¥1,000, H & under-Free

**Collection Exhibition**

Admission Fee: A&U-¥300, H & under-Free

¡ **Winter Exhibition:**

**Keisuke Ibuse & Kansai Yamane**  
Period: Until Sun., Apr. 1

**Okuda Genso Sayume Art Museum**

Address: 453-6 Higashi Sakeya-machi, Miyoshi City  
Tel: 0824-65-0010  
Hours: 9:30 am – 5:00 pm  
    <sup>2</sup> Open until 9:00 pm on Mar. 2 & 31  
Closed: February 14 & 15; March 14; April 11  
URL: <http://www.genso-sayume.jp>

**Special Exhibition**

¡ **Gyokuun Hirata**

Period: Thurs., Mar. 1 – Sun., Apr. 15

Admission Fee:

A-¥1,000 (¥900), Tickets for couple-  
¥1,800 U&H-¥500 (¥400), J & under-Free  
    <sup>2</sup> Advance ticket prices shown in ( ).

**Rai Sanyo Historic Site Museum**

Address: 5-15 Fukuromachi, Naka-ku, Hiroshima  
City  
Tel: 082-298-5051  
Hours: 9:30 am – 5:00 pm  
Closed: Mondays

**Special Exhibition**

¡ **Traditional *Hina* Dolls on Display**

Period: Thurs., Feb. 1 – Sun., Mar. 11  
Admission Fee: A-¥300  
J Tea ceremony will be held from 10 am to 3  
pm on March 4. Fee for the tea ceremony will  
be 500 yen.

**Hatsukaichi Art Gallery**

Address: 1-11-1 Shimohera, Hatsukaichi City  
(inside Hatsukaichi Bunka Hall Sakurapia)  
Tel: 0829-20-0222  
Hours: 10:00 am – 6:00 pm  
Closed: Mondays (except national holidays)

**Special Exhibition**

¡ **Collections from Woodone Museum of Art**

Period: Until Sun., Feb. 11  
Admission Fee: A-¥300, U-¥200,  
H & under-Free



Please feel free to contact the International Exchange Lounge at 082-247-9715.

E-mail: [golounge@pcf.city.hiroshima.jp](mailto:golounge@pcf.city.hiroshima.jp)

February 2018

# Sanfrecce Hiroshima FC Schedule 2018

## GAME SCHEDULE Date / Kick Off / Game / Venue / Ticket Sales

### 2018 J League

Sat., February 24 / 2:00 pm / vs. Hokkaido Consadole Sapporo / EDION Stadium Hiroshima / From Sat., February 3  
 Sun., March 18 / 4:00 pm / vs. Y Júbilo Iwata / EDION Stadium Hiroshima / From Sat., February 3  
 Wed., April 11 / 7:00 pm / vs. Yokohama F·Marinos / EDION Stadium Hiroshima / From Sat., March 3  
 Sat., April 21 / 2:00 pm / vs. Sagantosu / EDION Stadium Hiroshima / From Sat., March 3  
 Wed., May 2 / 7:30 pm / vs. Shimizu S-Pulse / EDION Stadium Hiroshima / From Sat., April 7  
 Sun., May 6 / 5:00 pm / vs. Vissel Kobe / EDION Stadium Hiroshima / From Sat., April 7  
 Sun., May 20 / 4:00 pm / vs. Cerezo Osaka / EDION Stadium Hiroshima / From Sat., April 7  
 Wed., July 18 / 7:00 pm / vs. Gamba Osaka / EDION Stadium Hiroshima / From Sat., June 2  
 Sat., July 28 / 7:00 pm / vs. Urawa Red Diamonds / EDION Stadium Hiroshima / From Sat., June 2  
 Sun., August 5 / 7:00 pm / vs. Shonan Bellemare / EDION Stadium Hiroshima / From Sat., July 7  
 Sat., August 11 / 7:00 pm / vs. V-Varen Nagasaki / EDION Stadium Hiroshima / From Sat., July 7  
 Sun., August 19 / 7:00 pm / vs. Kawasaki Frontale / EDION Stadium Hiroshima / From Sat., July 7  
 Sat., September 1 or Sun., September 2 / Not finalized / vs. Kashima Antlers / EDION Stadium Hiroshima / From Sat., August 4  
 Sat., September 22 or Sun., September 23 / Not finalized / vs. F. C. Tokyo / EDION Stadium Hiroshima / From Sat., August 4  
 Sat., October 6 or Sun., October 7 / Not finalized / vs. Kashiwa Reysol / EDION Stadium Hiroshima / From Sat., September 1  
 Sat., November 10 / Not finalized / vs. Vegalta Sendai / EDION Stadium Hiroshima / From Sat., October 6  
 Sat., November 24 / Not finalized / vs. Nagoya Grampus / EDION Stadium Hiroshima / From Sat., October 6

### 2018 J League YBC Levain Cup Group Stage

Wed., March 14 / 7:30 pm / vs. Nagoya Grampus / EDION Stadium Hiroshima / From Sat., February 3  
 Wed., April 4 / 7:00 pm / vs. Urawa Red Diamonds / EDION Stadium Hiroshima / From Sat., March 3  
 Wed., May 9 / 7:00 pm / vs. Gamba Osaka / EDION Stadium Hiroshima / From Sat., April 7

## TICKETS Seats / Advance Tickets / At the Door

w Reserved Seats SS / ¥5,300 / ¥5,900    w Reserved Seats SA / ¥3,700 / ¥4,300  
 w Unreserved Seats for Adults / ¥2,600 / ¥3,200  
 w Unreserved Seats for Students (High School Students and under) / ¥1,000 / ¥1,500



## ACCESS

### w EDION Stadium Hiroshima (Hiroshima Big Arch)

Take the *Astramline* bound for *Koiki-koen-mae* (広域公園前) and get off at the last station, *Koiki-koen-mae* (広域公園前).

From *Hondori* Station: One way fare - ¥480    Travel time - 35 min.

## TICKET OFFICES

w Sanfrecce Hiroshima Official Shop V-POINT (Shareo, underground shopping mall) / Tel. 248-3317 / Mon. – Sat.: 11 am – 9 pm; Sun. & national holidays: 10 am – 8 pm / Open every day  
 w EDION Play Guide (SUNMALL, 1F)    w Fukuya (Hiroshima Station) (7F)    w Alpark Tenmaya (3F)  
 w Convenience Stores (FamilyMart, Seven-Eleven, CircleKSunkus and Lawson)

**INQUIRIES:** Sanfrecce HIROSHIMA    Tel. 233-3233    URL: [www.sanfrecce.co.jp](http://www.sanfrecce.co.jp)

Please feel free to contact the International Exchange Lounge at 082-247-9715.

E-mail: [golounge@pcf.city.hiroshima.jp](mailto:golounge@pcf.city.hiroshima.jp)

February 2018



# Hiroshima Dragonflies

## 2017 – 2018 B2 League

μ Hiroshima Dragonflies is a professional basketball team in Hiroshima.

### GAME SCHEDULE Date / Starting Time / Game / Venue

<sup>2</sup> Only the games scheduled to be held in Hiroshima are listed below. For away games, please check the Hiroshima Dragonflies' official website.

#### μ FEBRUARY

Sat., February 3 / 2:00 pm / vs. Rizing Zephyr Fukuoka / Kure City Sogo Taiikukan (Oak Arena)  
 Sun., February 4 / 1:30 pm / vs. Rizing Zephyr Fukuoka / Kure City Sogo Taiikukan (Oak Arena)  
 Fri., February 16 / 7:00 pm / vs. Gunma Crane Thunders / Hiroshima Sun Plaza  
 Sat., February 17 / 2:00 pm / vs. Gunma Crane Thunders / Hiroshima Sun Plaza

#### μ MARCH

Sat., March 10 / 6:30 pm / vs. Kumamoto Volters / Hiroshima Sun Plaza  
 Sun., March 11 / 1:30 pm / vs. Kumamoto Volters / Hiroshima Sun Plaza  
 Sat., March 24 / 6:30 pm / vs. Kagawa Five Arrows / Hiroshima Sun Plaza  
 Sun., March 25 / 1:30 pm / vs. Kagawa Five Arrows / Hiroshima Sun Plaza

#### μ APRIL

Sat., April 7 / 6:30 pm / vs. Ehime Orange Vikings / Hiroshima Sun Plaza  
 Sun., April 8 / 1:30 pm / vs. Ehime Orange Vikings / Hiroshima Sun Plaza  
 Sat., April 14 / 6:30 pm / vs. Earthfriends Tokyo Z / Hiroshima Sun Plaza  
 Sun., April 15 / 1:30 pm / vs. Earthfriends Tokyo Z / Hiroshima Sun Plaza  
 Sat., April 28 / 6:30 pm / vs. Kanazawa Samuraiz / Hiroshima Sun Plaza  
 Sun., April 29 / 1:30 pm / vs. Kanazawa Samuraiz / Hiroshima Sun Plaza

#### μ MAY

Wed., May 2 / 7:00 pm / vs. Bambitious Nara / Not finalized

### TICKETS (At the Door)

w Reserved seats: ¥3,700 - ¥13,400

w Unreserved seats (1<sup>st</sup> floor seats): Adults-¥3,200 Children-¥2,100

w Unreserved seats (2<sup>nd</sup> floor seats): Adults-¥2,600 Children-¥1,500

### ACCESS

w **Hiroshima Sun Plaza** (1-1 Shoko Center 3-chome, Nishi-ku, Hiroshima City)

From JR Shin Inokuchi (新井口) Station or Shoko Center Iriguchi (商工センター入口) Streetcar Stop, walking time to destination is 5 minutes.

w **Higashihiroshima City Undo Koen Taiikukan** (67-1 Taguchi, Saijo-cho, Higashihiroshima City)

Take a bus from JR Saijo (西条) or JR Higashi Hiroshima (東広島) Station (JR Sanyo Line).

w **Hiroshima Prefectural Koen Arena** (Kandatani, Shijitsukan-machi, Miyoshi City)

Take a bus from JR Miyoshi (三次) Station (JR Geibi Line).

w **Kure City Sogo Taiikukan** (7-1 Hiro Ohshingai 1-chome, Kure City)

From JR Hiro (広) Station (JR Kure Line), walking time to destination is 5 minutes.

Please feel free to contact the International Exchange Lounge at 082-247-9715.

E-mail: [golounge@pcf.city.hiroshima.jp](mailto:golounge@pcf.city.hiroshima.jp)

February 2018

## **TICKET OFFICES**

W Hiroshima Dragonflies Club Shop (Hiroshima Marina Hop / Tel. 082-297-6825 / 10:00 am – 8:00 pm)  
(The club shop sells advanced tickets only.)

W Ticket PIA

W Convenience Stores (FamilyMart, Seven Eleven, CircleKSunkus and Lawson)

W Hiroshima Power House (Basketball pro Shop)

W Taiikusha (Sporting-goods store)

## **INQUIRIES**

W Hiroshima Dragonflies Tel. 082-297-6825 (Mon. – Fri., 10:00 am – 5:30 pm)

HP: <http://hiroshimadragonflies.com>

W NBL (National Basketball League of Japan) Official HP: <http://www.nbl.or.jp>



Please feel free to contact the International Exchange Lounge at 082-247-9715.

E-mail: [golounge@pcf.city.hiroshima.jp](mailto:golounge@pcf.city.hiroshima.jp)

February 2018

# Seasonal Event Information

## February 2018

Ⓔ Event schedules are subject to change.  
Please contact event organizers before you go.



### Oyster Festivals



○ Hiroshima is well known as the largest producer of oysters in Japan. Winter is the best season for oysters, so many oyster festivals are held at various places in Hiroshima every February. You can buy fresh oysters and also taste various oyster dishes at the festival venues. Most events will end when the oysters are sold out.

**Sat., February 3 & Sun., February 4**

### Hiroshima Food Stadium & Oyster Festival ひろしまフードスタジアム 冬の

陣

**TIME:** 10:00 am – 4:00 pm

**PLACE:** The Open Space of the Former Municipal Baseball Stadium, Motomachi, Naka-ku, Hiroshima City

**ACCESS:** Get off at Kamiya-cho-nishi or Genbaku Dome-mae streetcar stop.

**ADMISSION FEE:** Free

**INQUIRIES:** Executive Committee (RCC Broadcasting) 082-222-1133 (weekdays, 10 am – 4 pm)

◎ You can enjoy Hiroshima's winter food specialties at this festival. Oyster *nabe* (hot pot dish) will be sold at ¥200 per serving.

**Sun., February 4**

### Hiroshima Oyster Charity Bazaar ひろしま 広島 かきチャリティバザール

**TIME:** From 9:00 am onward

**PLACE:** River bank in front of the JR Hiroshima Station (south exit) (south side of "Big Front Hiroshima"), Minami-ku, Hiroshima City

**ACCESS:** From the south exit of JR Hiroshima Station, walking time to destination is 5 minutes.

**INQUIRIES:** *Hiroshima-shi Gyogyo Kyodo Kumiai* (Fisheries Cooperative Association) 082-251-5221

**Sun., February 4**

### Etajima Oyster Festival えたじまし 江田島市 カキ 祭り

**TIME:** 10:00 am – 2:00 pm

**PLACE:** *Koyo Minato Koen* (park), Etajima City

**ACCESS:** Get on a ferry at Hiroshima Port and get off at Koyo Port (a 20 min. ferry ride). Walking time to destination is 3 minutes.

**INQUIRIES:** Executive Committee 0823-43-1644

**Sun., February 4**

### Ondo Oyster Festival おんど 音戸 かきまつり

**TIME:** From 9:00 am onward

Please feel free to contact the International Exchange Lounge at 082-247-9715.

E-mail: [golounge@pcf.city.hiroshima.jp](mailto:golounge@pcf.city.hiroshima.jp)

February 2018

**PLACE:** In front of *Ondo Gyogyo Kyodo Kumiai* (Fisheries Cooperative Association), Ondo-cho, Kure City

**ACCESS:** Take a bus from JR Kure Station (JR Kure Line) and get off at Ondo Sanbashi (a 20 min. bus ride).

**INQUIRIES:** *Ondo Gyogyo Kyodo Kumiai* (Fisheries Cooperative Association) 0823-52-2561

**Sun., February 11**

### Ohno Oyster Festival おおの 大野 かきフェスティバル

**TIME:** 9:30 am – 2:30 pm

**PLACE:** Boat Race Miyajima (motorboat racetracks), Miyajima-guchi, Hatsukaichi City

**ACCESS:** From JR Miyajimaguchi Station (JR Sanyo Line), walking time to destination is 3 minutes.

**INQUIRIES:** *Hatsukaichi Kanko Kyokai* (Tourist Association), Ohno Branch 0829-30-3533

**Sun., February 11**

### Kure Suisan Festival くれすいさんまつ 呉水産祭り

**TIME:** From 10:00 am onward

**PLACE:** *Kure-shi Chuo Koen* (Kure Central Park), Kure City

**ACCESS:** From JR Kure Station (JR Kure Line), walking time to destination is 10 minutes.

**INQUIRIES:** Executive Committee 0823-25-3319

**Sat., February 10 & Sun., February 11**

### The 34<sup>th</sup> Miyajima Oyster Festival だい かいみやじま まつ 第34回 宮島 かき祭り

**TIME:** 10:00 am – 3:00 pm

**PLACE:** In front of Miyajima Pier, Miyajima-cho, Hatsukaichi City

**ACCESS:** Get off at JR Miyajima-guchi Station (JR Sanyo Line) or the Miyajima Streetcar Stop (Hiroden Streetcar Miyajima Line), then take a ferry to Miyajima.

**INQUIRIES:** *Miyajima Kanko Kyokai* (Tourist Association) 0829-44-2011

© Stage performances such as *taiko* (traditional Japanese drums) will be held at the venue.

A ritual and *kagami-biraki* (cutting a *kagami-mochi*, a traditional Japanese new year's ornament consisting of two round rice cakes) will also be held on the 10<sup>th</sup>.

**Sun., February 11**

### Tahara Oyster Festival たはら 田原 かきまつり

**TIME:** From 9:00 am onward

**PLACE:** In front of *Tahara Gyogyo Kyodo Kumiai* (Fisheries Cooperative Association), Tahara, Ondo-cho, Kure City

**ACCESS:** Take a bus from JR Kure Station (JR Kure Line) and get off at Tahara (a 40 min. bus ride).

**INQUIRIES:** *Tahara Gyogyo Kyodo Kumiai* (Fisheries Cooperative Association) 0823-52-2900

**Sun., February 18**

### The 20<sup>th</sup> Takarajima Kurahashi Festival だい かいたからじま 第20回 宝島 くらはしフェスティバル

**TIME:** 9:00 am – 2:00 pm

**PLACE:** Around *Katsurahama Onsen Kan*, Kurahashi-cho, Kure City

**ACCESS:** Take a bus from JR Kure Station (JR Kure Line) and get off at Katsurahama Onsen Kan (a 60 min. bus ride).

**INQUIRIES:** *Kurahashi Shimin Center* 0823-53-1111



Please feel free to call

at 082-247-9715.

February 2018

**Sun., February 18****Saka-cho *Suisan* Festival** さかちょうぎょきょうすいさん  
坂町 漁協 水産まつりチャリティバザール**TIME:** From 9:00 am onward**PLACE:** Palty Fuji Saka (Shopping Mall), Heisei-gahama, Saka-cho, Aki-gun**ACCESS:** From JR Saka Station (JR Kure Line), walking time to destination is 3 minutes.**INQUIRIES:** *Saka-cho Gyogyo Kyodo Kumiai* (Fisheries Cooperative Association) 082-885-0009**Sun., February 25****The 28<sup>th</sup> Hiroshima City *Suisan* Festival** だい かいひろしましすいさん  
第28回 広島市 水産まつり**TIME:** 10:00 am – 2:00 pm**PLACE:** Marina Hop, Kanon-shin-machi, Nishi-ku, Hiroshima City**ACCESS:** From JR Hiroshima Station, take the No. 3 bus and get off at Kanon Marina Hop (a 37 min. bus ride).**INQUIRIES:** *Suisan Ka*, Hiroshima City Hall 082-504-2252 (weekdays only)**Sun., February 25****Hayase Oyster Festival** はやせ  
早瀬 かきまつり**TIME:** From 8:30 am onward**PLACE:** Open Space in front of the former *Hayase Shogakko* (elementary school), Ondo-cho, Kure City**ACCESS:** Take a bus from JR Kure Station (JR Kure Line) and get off at Hayase Hoikusho-mae (a 35 min. bus ride).**INQUIRIES:** *Hayase Gyogyo Kyodo Kumiai* (Fisheries Cooperative Association) 0823-56-0470**Sun., February 25****Yasuura Oyster Festival** やすうらむてんか まつ  
安浦 無添加 カキ 祭り**TIME:** From 10:00 am onward**PLACE:** Greenpia Setouchi, Yasuura-cho, Kure City**ACCESS:** From JR Yasuura Station (JR Kure Line), driving time to destination is 8 minutes.**INQUIRIES:** *Kaneda Suisan* 0823-84-5392**Events Held in Hiroshima City****Sat., February 3*****Setsubun-sai* Festival at Hiroshima Gokoku Shrine** せつぶんさい ひろしまごこくじんじや  
節分祭 (広島護国神社)

)

**TIME:** Ritual: From 3:30 pm onward; *Mamemaki* (bean-throwing): From 4:00 pm onward**PLACE:** Hiroshima Gokoku Shrine, Motomachi, Naka-ku**ACCESS:** j From Kamiya-cho-higashi Streetcar Stop or the Hiroshima Bus Center, walking time to destination is 8 minutes.

k From JR Shin-Hakushima Station (JR Sanyo Line), walking time to destination is 15 minutes.

**INQUIRIES:** Hiroshima Gokoku Shrine 082-221-5590© There will be a ritual, arrow shooting & *mamemaki* (bean-throwing) for good luck.

Please feel free to contact the International Exchange Lounge at 082-221-5595.

E-mail: [golounge@pcf.city.hiroshima.jp](mailto:golounge@pcf.city.hiroshima.jp)

February 2018





**Sat., February 3****Setsubun-sai Festival (Yaikagashi Shinji) at Sumiyoshi Shrine**せつぶんさい やい か しんじ すみよしじんじや  
**節分祭 (焼 嗅 がし 神事) (住吉 神社)****TIME:** From 2:00 pm onward**PLACE:** Sumiyoshi Shrine, Sumiyoshi-cho, Naka-ku**ACCESS:** j Take the No. 24 bus and get off at Sumiyoshi-cho. Walking time to destination is 5 minutes.  
k Take the No. 3, 6, or 10 bus and get off at Kako-machi. Walking time to destination is 3 minutes.**INQUIRIES:** Sumiyoshi Shrine 082-241-0104© This is a traditional ritual on *Setsubun* day (February 3); *miko*, female attendants of the shrine, will grill one thousand sardine heads and fan smoke with a large paper fan to drive away evil spirits.After the ritual, you can take home a grilled sardine's head on a holly branch, which is a *Setsubun* lucky charm. *Mamemaki* (bean-throwing) will also be held.**Sat., February 3****Setsubun-sai Festival at Sorasaya Inao Shrine**せつぶんさい そらさやいなおじんじや  
**節分祭 (空 鞆 稻 生 神社)****TIME:** From 5:00 pm onward**PLACE:** Sorasaya Inao Shrine, Honkawa-cho, Naka-ku**ACCESS:** From Honkawa-cho streetcar stop, walking time to destination is 5 minutes.**INQUIRIES:** Sorasaya Inao Shrine 082-231-4476**Sun., February 4 & 18****Hiroshima Minato Marché ひろしまみなとマルシェ****TIME:** 9:00 am – 3:00 pm**PLACE:** Open Space between East and West Terminal of Hiroshima Port, Minami-ku**ACCESS:** Take the No. 1, 3 or 5 streetcar bound for Hiroshima Port and get off at the last stop, Hiroshima Port.**INQUIRIES:** Hiroshima Minato Marché Office 082-255-6646

© You can buy and taste locally-grown fresh vegetables and other food products at the market.

**Sun., February 18****Umemi (Plum Blossoms-viewing) Tea Ceremony at Shukkeien Garden** うめ見ちゃかい  
**茶会****TIME:** 10:00 am – 3:00 pm**PLACE:** Shukkeien Garden**ACCESS:** From Shukkeien-mae streetcar stop, walking time to destination is 5 minutes.**FEE:** ¥800 (*Matcha*, green powdered tea) / ¥600 (*Amazake*, Japanese sweet sake)<sup>2</sup> Admission fee for the garden is also required.

{ Adults - ¥260, University & High school students - ¥150 Junior high & Elementary school students - ¥100 }
---

**INQUIRIES:** Shukkeien Garden 082-221-3620© *Amazake* is an alcoholic drink, so please refrain from driving if you drink any.

**Events Held on Miyajima**

Please feel free to contact the International Exchange Lounge at 082-247-9715.

E-mail: [golounge@pcf.city.hiroshima.jp](mailto:golounge@pcf.city.hiroshima.jp)

February 2018

**Sat., February 3****Setsubun-sai Festival in Miyajima** せつぶんさい  
節分祭**TIME:** From 11:00 am onward**PLACE:** Daishoin Temple, Miyajima**ACCESS:** Get off at JR Miyajima-guchi Station (JR Sanyo Line) or Miyajima Streetcar Stop (Hiroden Streetcar Miyajima Line), then take a ferry to Miyajima.**INQUIRIES:** Daishoin Temple 0829-44-0111© There will be a ritual & *mame-maki* (bean-throwing) for good luck.**Sat., February 3****Hoshi Matsuri at Daiganji Temple in Miyajima (Ritual)** ほしまつ  
星祭り**TIME:** From 6:30 pm onward**PLACE:** Daiganji Temple, Miyajima**ACCESS:** Get off at JR Miyajima-guchi Station (JR Sanyo Line) or Miyajima Streetcar Stop (Hiroden Streetcar Miyajima Line), then take a ferry to Miyajima.**INQUIRIES:** Daiganji Temple 0829-44-0179**Mon., February 5****Ju-san-mairi Kodomo Mame-maki (Bean-throwing)** じゅうさんまい こどもまめまき  
十三参り 子供豆まき**TIME:** From 11:00 am onward**PLACE:** Daishoin Temple, Miyajima**ACCESS:** Get off at JR Miyajima-guchi Station (JR Sanyo Line) or the Miyajima Streetcar Stop (Hiroden Streetcar Miyajima Line), then take a ferry to Miyajima.**INQUIRIES:** Daishoin Temple 0829-44-0111© 12-year-old-children who were born in the year of the dog (which is also this year in the Chinese zodiac) will throw beans in a "*Mame-maki*" ritual to pray for happiness throughout the year.**Sat., February 10 & Sun., February 11****The 34<sup>th</sup> Miyajima Oyster Festival** だい かいみやじま まつ  
第34回 宮島 かつ祭り**TIME:** 10:00 am – 3:00 pm**PLACE:** In front of Miyajima Pier, Miyajima-cho, Hatsukaichi City**ACCESS:** Get off at JR Miyajima-guchi Station (JR Sanyo Line) or the Miyajima Streetcar Stop (Hiroden Streetcar Miyajima Line), then take a ferry to Miyajima.**INQUIRIES:** *Miyajima Kanko Kyokai* (Tourist Association) 0829-44-2011© Stage performances such as *taiko* (traditional Japanese drums) will be held at the venue.A ritual and *kagami-biraki* (cutting a *kagami-mochi*, a traditional Japanese new year's ornament consisting of two round rice cakes) will also be held on the 10<sup>th</sup>.**Thurs., March 8****Memorial Service for Used Kitchen Knives** ほうちょうくよう  
庖丁 供養**TIME:** From 11:00 am onward**PLACE:** Daishoin Temple, Miyajima**ACCESS:** Get off at JR Miyajima-guchi Station (JR Sanyo Line) or the Miyajima Stop (Hiroden Streetcar Miyajima Line), then take a ferry to Miyajima.**INQUIRIES:** Daishoin Temple 0829-44-0111

© This is a ritual to show gratitude for well-used kitchen knives.

**Events Held Outside of Hiroshima City****Sat., Sun. & national holidays**

Please feel free to contact the International Exchange Lounge at 082-247-9715.

E-mail: [golounge@pcf.city.hiroshima.jp](mailto:golounge@pcf.city.hiroshima.jp)

February 2018

**Sake Brewery Opening** ようこそ 醸華町西条 じょう か まちさいじょう**PLACE:** Sake Breweries, Higashihiroshima City**ACCESS:** Get off at JR Saijo Station (JR Sanyo Line).**FEE:** Free**INQUIRIES:** Saijo Sakagura-dori Kanko Annai-jo

Tel. &amp; Fax 082-421-2511 (10:00 am – 4:00 pm, closed on Mondays)

© Some sake breweries open to the public on Sat., Sun. &amp; national holidays. Signboards with the words

“ようこそ 醸華町西条” (“Yokoso Jokamachi Saijo”) will be placed in front of the opened breweries.

**Sat., February 3****Setsubun-e at Saikoji Temple** 西國寺 節分会 さいこくじ せつぶんえ**TIME:** 11:00 am – 12:30 pm(Ritual: From 11:00 am onward / *Mame-maki* (bean-throwing): From 11:30 am onward)**PLACE:** Saikokuji Temple, Onomichi City**ACCESS:** j From JR Onomichi Station (JR Sanyo Line), walking time to destination is 20 minutes.

k From JR Onomichi Station (JR Sanyo Line), take a bus going east and get off at Saikokuji-shita. Walking time to destination is 5 minutes.

**INQUIRIES:** Saikokuji Temple 0848-37-0321© There will be a ritual, *taiko* (traditional Japanese drum) performance and *mame-maki* (bean-throwing) for good luck.**Sat., February 3****Setsubun-sai at Kibitsu Shrine (Ikkyu Shrine)** 吉備津彦神社 (一宮神社) 節分 きびつひこじんじや いっきゅうじんじや せつぶんさい  
祭**TIME:** Ritual: From 7:30 pm onward / *Mame-maki* (bean-throwing): From 8:00 pm onward**PLACE:** Kibitsu Shrine (Ikkyu Shrine), Onomichi City**ACCESS:** From JR Onomichi Station (JR Sanyo Line), walking time to destination is 10 minutes.**INQUIRIES:** Kibitsu Shrine 0848-22-5545**Sat., February 3****Setsubun-sai at Oyama Shrine** 大山神社 節分 厄祓大祭 おおやまじんじや せつぶんやくはらえたいさい**TIME:** 3:30 pm – 4:30 pm**PLACE:** Oyama Shrine, Innoshima-habu-cho, Onomichi City**ACCESS:** From *Shimanami Kaido* Innoshima-kita I.C., driving time to destination is 10 minutes.**INQUIRIES:** Oyama Shrine 0845-22-0827**Sat., February 3****Setsubun-sai & Horafuki-shinji at Bingo-ichinomiya Kibitsu Shrine**びんごいちのみや きびつじんじや せつぶんさい ぶ しんじ  
備後一宮・吉備津神社 節分祭・ほら吹き神事**TIME:** *Setsubun-sai* (bean-throwing) – From 7:00 pm onward*Horafuki-shinji* (big talker competition) – From 8:00 pm onward**PLACE:** Bingo-ichinomiya Kibitsu Shrine, Fukuyama City**ACCESS:** From JR Shinichi Station (JR Fukuen Line), take a bus bound for 金丸 (Kanemaru) and get off at Ichinomiya (a 5 min. bus ride).**INQUIRIES:** Bingo-ichinomiya Kibitsu Shrine 0847-51-3395**Sat., February 3 & Sun., February 4****Umemi (Plum Blossoms-viewing) Tea Ceremony at Shotoen** 松濤園 梅見 しょうとうえん うめみちゃがい  
茶会**TIME:** 9:30 am – 4:00 pm

Please feel free to contact the International Exchange Lounge at 082-247-9715.

E-mail: [golounge@pcf.city.hiroshima.jp](mailto:golounge@pcf.city.hiroshima.jp)

February 2018

**PLACE:** Shotoen, Shimokamagari-cho, Kure City

**ACCESS:** Take a bus bound for Kamagari from JR Hiro Station (JR Kure Line) and get off at San-no-se.  
Walking time to destination is 3 minutes.

**FEE:** Free for the tea ceremony <sup>2</sup> Admission fee for Shotoen is required.

( Adults & University students - ¥800, High school students - ¥480  
Junior high & Elementary school students - ¥320 )

**INQUIRIES:** *Shotoen* 0823-65-2900

© A tea-making demonstration will only be held on the 3<sup>rd</sup>.

**Sun., February 4**

## The 15<sup>th</sup> International Exchange Festival in Kure

だい かいこくさいこうりゅう  
第15回 国際交流フェスタ in くれ

**TIME:** 1:00 pm – 4:00 pm

**PLACE:** Kure City Hall, 1F, Kure City

**ACCESS:** From JR Kure Station (JR Kure Line), walking time to destination is 10 minutes.

**INQUIRIES:** Kure International Exchange Association 0823-25-5607

**Sun., February 4**

## Onabe Festival at Kure Portpia Park くれ おおなべ 呉ポ-大鍋まつり

**TIME:** 10:00 am – 3:00 pm

**PLACE:** Kure Portpia Park, Kure City

**ACCESS:** Get off at JR Kure-Portpia Station (JR Kure Line).

**INQUIRIES:** *Kure Portpia Park Tomo no Kai* 0823-38-0560

© *Nabemono* (hot pot dish) is eaten from a large pot and is a typical winter food in Japan. You can taste various kinds of *nabemono* at the festival.

**Fri., February 9 – Sun., February 11**

## Mihara Shinmei-ichi Market みはらしんめいいち 三原神明市

**TIME:** 9:00 am – 8:00 pm

**PLACE:** Around the north area of JR Mihara Station, Mihara City

**ACCESS:** Get off at JR Mihara Station (JR Sanyo Line).

**INQUIRIES:** *Ukishiro Lobby* Tourist Information Center 0848-67-5877

© This is a festival with a history of 440 years. Stalls selling plants, *daruma* (Dharma dolls), etc. will be set up.



**Sat., February 10**

## Sakagura Walking Tour (Free) さかくら 酒蔵のまち てくてくガイド

**TIME:** Tour will start on an as-needed basis between 10:00 am and 11:00 am.

**MEETING PLACE:** *Saijo Sakagura-dori Kanko Annai-jo* (Tourist Information Center), Higashihiroshima City

**ACCESS:** Get off at JR Saijo Station (JR Sanyo Line).

**PARTICIPATION FEE:** Free

**INQUIRIES:** *Saijo Sakagura-dori Kanko Annai-jo* Tel. & Fax 082-421-2511

© A volunteer guide will show you *Sakagura-dori* (Sake Brewery Street). During the tour you will be able to taste *sake* and the purified water that is used to make it.

© A regular guided tour (fee-based) is also held every day except on the 10<sup>th</sup>. Reservations are required a week in advance. An English speaking guide is available. Please contact the *Saijo Sakagura-dori* Tourist Information Center in advance.

**Sat., February 10 – Sun., March 25**

## Hina Doll Presentation in Takehara まちな ひな たけはら 町並み雛めぐり

**TIME:** Open hours vary according to places.

**PLACE:** Around the Special Directory of Historical Buildings Area in Takehara City

**ACCESS:** From JR Takehara Station (JR Kure Line), walking time to destination is 15 minutes.

Please feel free to contact the International Exchange Lounge at 082-247-9715.

E-mail: [golounge@pcf.city.hiroshima.jp](mailto:golounge@pcf.city.hiroshima.jp)

February 2018

**ADMISSION FEE:** Some places will require an admission fee.

**INQUIRIES:** NPO Network Takehara 0846-22-0214

© March 3<sup>rd</sup> is *Hina Matsuri* (*Hina Festival*), a day to wish girls good health and a long life. Most families with daughters celebrate by displaying *hina* dolls. The dolls are offered sweetened puffed rice (*hina-arare*), white sake containing rice malt (*shirozake*), colored lozenge-shaped rice cakes (*hishi-mochi*), etc. (Abstracted from The Japanese-English Dictionary for Conversation about Japan, p.578, Obunsha)

© Antique *hina* dolls will be on display at this event. Various events will also be held during the event period.

**Sun., February 11**

**Shinmeisai Festival at Futamado** ふたまたど しんめいさい  
二窓の神明祭

**TIME:** From 2:00 pm onward

<sup>2</sup> “*Shinmei-san*” is an object 20 meters high made with bamboo and wood. It will be lit on fire at 5:30 pm.

**PLACE:** Former *Tadanoumi Higashi Shogakko* (elementary school), Takehara City

**ACCESS:** From JR Tadanoumi Station (JR Kure Line), walking time to destination is 20 minutes.

**INQUIRIES:** Komarui Shrine 0846-26-0227

© This is a fire festival with more than 400 years of tradition.

**Sun., February 11**

**Oyumi-shinji (Ritual) at Nunakuma Shrine** ぬなくまじんじゃ ゆみしんじ  
沼名前神社 お弓神事

**TIME:** 2:00 pm – 3:30 pm

**PLACE:** Nunakuma Shrine, Tomo-cho, Fukuyama City

**ACCESS:** Take a Tomotetsu bus from JR Fukuyama Station (JR Sanyo Line) and get off at Tomo-no-ura (a 30 min. bus ride). Waking time to destination: 10 minutes

**INQUIRIES:** Nunakuma Shrine 084-982-2050

© This is a ritual to pray for good health and fortune throughout the year by shooting an arrow at a target. This ritual is designated as one of Fukuyama City’s intangible folklore cultural assets.

**Sat., February 17**

**Ofuku Biraki-sai & Hadaka Matsuri at Kui Inari Shrine**

く い いなりじんじや おふくびらきさい まつ  
久井稲荷神社 御福開祭・はだか祭り

**TIME:** *Ofuku Biraki-sai* (ritual) – From 7:00 pm onward / *Hadaka Matsuri* – From 9:00 pm onward

**PLACE:** Kui Inari Shrine, Mihara City

**ACCESS:** j From JR Mihara Station (JR Sanyo Line), take a bus bound for Kozan and get off at Kui Shinryojo-mae (a 30 min. bus ride). Waking time to destination is 5 minutes.

k From Mihara Kui I.C. on the Sanyo Expressway, driving time to destination is 15 minutes.

**INQUIRIES:** Kui Inari Shrine 0847-32-6029

© *Hadaka Matsuri* is a festival where a group of young men wearing only loincloths rush into the temple after purifying their bodies in the river. Then, they scramble for a pair of *shingi* or *fukugi* (sacred wands) thrown down into the darkness by a temple priest from the upper floor of the temple. The person who catches a sacred wand is assured happiness throughout the year.

© *Hadaka Matsuri* is a traditional Japanese festival. It is held in various areas of Japan during this season. *Hadaka Matsuri* at Kui Inari Shrine is the only *Hadaka Matsuri* held in Hiroshima Prefecture.

**Sat., February 17 – Sun., March 18**

**The 16<sup>th</sup> Hina Matsuri (Girl’s Festival) in Tomo** だい かいとも まちなみ まつり  
第16回鞆・町並ひな祭

**TIME:** Open hours vary according to facilities.

<sup>2</sup> *Tomo-no-ura Rekishi Minzoku Shiryō Kan* (museum): 9:00 am – 5:00 pm

**PLACE:** Tomo-cho, Fukuyama City

**ACCESS:** Take a Tomotetsu bus from JR Fukuyama Station (JR Sanyo Line) and get off at Tomo-no-ura (a 30 min. bus ride).

**ADMISSION FEE:** Free <sup>2</sup> Admission Fee for *Tomo-no-ura Rekishi Minzoku Shiryō Kan* is required: Adults & University students-¥150, High school students and under-Free



Please feel free to contact the International Exchange Lounge at 082-247-9715.

E-mail: [golounge@pcf.city.hiroshima.jp](mailto:golounge@pcf.city.hiroshima.jp)

February 2018



**INQUIRIES:** Executive Committee (*Tomo-no-ura Rekishi Minzoku Shiryō Kan*) 080-5614-2778

© March 3<sup>rd</sup> is *Hina Matsuri* (*Hina Festival*), a day to wish girls good health and a long life. Most families with daughters celebrate by displaying *hina* dolls. The dolls are offered sweetened puffed rice (*hina-arare*), white sake containing rice malt (*shirozake*), colored lozenge-shaped rice cakes (*hishi-mochi*), etc. (Abstracted from The Japanese-English Dictionary for Conversation about Japan, p.578, Obunsha)

© Antique *hina* dolls will be on display at this event.

**Sat., February 17 – Sun., March 25**

### *Hina Matsuri* (girl's festival) in Joge-cho てんりょうじょうげ 天領上下ひなまつり

**PLACE:** *Shirakabe no Machinami* (Shopping Street), Joge-cho, Fuchu City

**ACCESS:** From JR Joge Station (JR Fukuen Line), walking time to destination is 3 minutes.

**INQUIRIES:** Executive Committee 0847-62-3999

© March 3<sup>rd</sup> is *Hina Matsuri* (*Hina Festival*), a day to wish girls good health and a long life. Most families with daughters celebrate by displaying *hina* dolls. The dolls are offered sweetened puffed rice (*hina-arare*), white sake containing rice malt (*shirozake*), colored lozenge-shaped rice cakes (*hishi-mochi*), etc. (Abstracted from The Japanese-English Dictionary for Conversation about Japan, p.578, Obunsha). *Hina* dolls will be on display at this event.

© A market area, "*Deko-ichi*", will be held on Mar. 3 & 4.

© *Tezukuri-ichi* (handicrafts market) will be held on Mar. 17 & 18.

**Tue., February 20**

### *Hatsuka-no-ichi* Market はつが いち 廿日の市

**TIME:** 8:00 am – 10:00 am

**PLACE:** The Open Space in front of Hatsukaichi City Hall, Hatsukaichi City

**ACCESS:** From Hatsukaichi Shiyakusho-mae (Hiroden Streetcar Miyajima Line), walking time to destination is 5 minutes.

**INQUIRIES:** *Hatsukaichi Kanko Kyokai* (Tourist Association) 0829-31-5656

**Sat., March 3**

### *Mimi* (ear) Festival & Memorial Service for Dolls みみまつ 耳祭り にんぎょうくようさい 人形供養祭

**TIME:** From 1:30 pm onward

**PLACE:** Mimigo Shrine (inside Oyama Shrine), Innoshima Habu-cho, Onomichi City

**ACCESS:** From Innoshima-kita I.C. (*Shimanami Kaido* Expressway), driving time to destination is 10 minutes.

**INQUIRIES:** Oyama Shrine 0845-22-0827

© March 3<sup>rd</sup> is Ear Day in Japan. The God of Ears ("*Mimigo-san*") is enshrined in Mimigo Shrine, which is rare in Japan. A ritual will be held to pray for people who have ear disorders to get well. A memorial service for dolls will also be held.

**Sun., April 15** μ A pre-event will be held on April 14.

### Grand Tour Setouchi 2018 (cycling event) グラン・ツール・せとうち 2018

**SCHEDULE:** Apr. 14: Pre-event & Registration (10:00 am – 5:00 pm)

Apr. 15: Opening Ceremony & Cycling

**PLACE:** *Setouchi Shimanami Kaido*, Onomichi City

**START & GOAL:**

w 140km, 110km & 70km course: *Mukaishima Undo Koen* (park), Onomichi City

w 40km course: Manda Hakkou Company, Onomichi City

**ACCESS:**

***Mukaishima Undo Koen:*** From Mukaishima I.C. on the Shimanamikaido Expressway, driving time to destination is 5 minutes.

***Manda Hakkou Company:*** From Innoshima-kita I.C. on the Shimanamikaido Expressway, driving time to destination is 10 minutes.

Please feel free to contact the International Exchange Lounge at 082-247-9715.

E-mail: [golounge@pcf.city.hiroshima.jp](mailto:golounge@pcf.city.hiroshima.jp)

February 2018

**HOW TO PARTICIPATE:**

Enrollment will be accepted online from Fri., December 1, 2017 to Sun., March 4, 2018.

<sup>2</sup> Enrollment will be closed when all 2,300 spots are full.

**ELIGIBILITY FOR PARTICIPATION:**

- Those who are elementary school students and above.
- Those who have the physical strength to complete the full distance of each course within the time limit.
- Those who agree to abide by event rules.
- Those who finish registration by April 14. *R Registration will NOT be accepted after April 14.*

PLACE: Paul Bell Square, in front of JR Onomichi Station

TIME: 10:00 am – 5:00 pm

**COURSE & PARTICIPATION FEE:**

- Shimanami Master Course (140 km): ¥9,000 w 1,000 people will be accepted.
- Shimanami Middle Course (110 km): ¥8,000 w 500 people will be accepted.
- Shimanami Short Course (70 km): ¥7,000 w 500 people will be accepted.
- Shimanami Happy Course (40 km): ¥5,500 w 300 people will be accepted.

**INQUIRIES:** Grand Tour Setouchi Office (inside Hiroshima TV)

082-249-1218 (Mon. – Fri., 10 am – 6 pm) E-mail: [cycle@htv.jp](mailto:cycle@htv.jp)

HP: <http://www.htv.jp/grandtour/>

- © Setouchi Shimanami Kaido is the expressway connecting six islands in the Seto Inland Sea with seven bridges between Onomichi City (Hiroshima Pref.) and Imabari City (Ehime Pref.).
- © There will be aid stations where drinks and light meals are available.

Please feel free to contact the Setouchi Shimanami Kaido Lounge at 082-247-9715.  
E-mail: [info@shimanami.jp](mailto:info@shimanami.jp)





# Municipal Facilities

## G Facilities

(Address / Telephone / Open Hours / Closed / Admission Fee / URL)

Admission is generally allowed up to 30 min. prior to closing.

## P Hiroshima City Forest Park & Insectarium

(173 Fujigamaru, Fukuda-cho, Higashi-ku 732-0036 / Forest Park: 899-8241, Insectarium: 899-8964 / Forest Park: 9:00 am - 4:30 pm; Insectarium: 9:00 am - 4:30 pm / Closed: Forest Park - Wednesdays; Insectarium - Wednesdays / Admission Fees for the Insectarium: Adults-¥510, Seniors & High school students-¥170, Junior High & Elementary school students-Free (Free admission for High school students on Saturdays (except on national holidays and during school holidays)) / Forest Park: <http://www.daiichibshitei.com/forest/> Insectarium: <http://www.hiro-kon.jp/>)

### Events at the Forest Park

- ! **Mamemaki (bean-throwing) Event** / Sat., Feb. 3 / From 1:00 pm onward / *Dai-ichi* Parking Lot
  - 2 Numbered tickets will be distributed from 12:30 pm. The first 200 participants will be accepted.
  - 2 This will be canceled if the weather is bad.
- ! **St. Valentine's Day Event** / Sun., Feb. 11 & Mon., Feb. 12 / 10:00 am - 2:00 pm / Next to *Kanri Center* (in front of *papillon tower*)
  - 2 Free photo service and chocolates for male visitors will be offered to the first 100 couples or groups each day.
- ! **Let's Make & Eat a Baumkuchen** / Sun., Feb. 18 & 25 / 9:30 am - 1:00 pm / *Chuo Hiroba* / Fee: ¥200 / group
  - 2 Participants will be accepted from 9:00 am at the *kanri center* on the day of. Numbered tickets will be distributed at the gate. The first 70 groups will be accepted each day.
  - 2 This will be canceled if the weather is bad.

### Events at the Insectarium

- ! **Hold Insects in a Hidden Room** / Feb. 3 (Sat.), 4 (Sun.), 10 (Sat.), 17 (Sat.), 18 (Sun.), 24 (Sat.) & 25 (Sun.) / 1:00 pm - 3:00 pm / Participation Fee: Insectarium admission fee
  - 2 The first 30 groups will be accepted each day.
- ! **Craft Workshop with Silkworm Cocoons** / Feb. 3 (Sat.), 4 (Sun.), 10 (Sat.), 11 (Sun.), 12 (Mon.), 17 (Sat.), 18 (Sun.), 24 (Sat.) & 25 (Sun.) / j 10:00 am - noon k 1:00 pm - 3:00

pm / Fee: ¥120 for materials, plus museum admission fee

- ! **St. Valentine's Day Event: Take a Photo with Butterflies** / Sun., Feb. 11 & Mon., Feb. 12 / j 10:00 am - noon k 1:00 pm - 3:00 pm

## E The Hiroshima Botanical Garden

(3-495 Kurashige, Saeki-ku 731-5156 / 922-3600 / 9:00 am - 4:30 pm / Closed on Fridays / Adults-¥510, Seniors & High school students-¥170, Junior High and Elementary school students-Free (Free admission for High school students on Saturdays (except on national holidays and during school holidays)) / <http://www.hiroshima-bot.jp/>)

<Exhibitions> Exhibitions will close at 3:30 pm on their last day.

### ∨ Tenji Shiryo-kan

- { **Japanese-style Botanical Paintings** / Sat., Feb. 10 - Thurs., Mar. 1
- { **Floral Decorations** / Sat., Mar. 3 - Thurs., Mar. 8
- { **The World of Plant Dyeing** / Sat., Mar. 10 - Thurs., Apr. 5

### ∨ Tenji Onshitsu (hothouse exhibitions)

- { **Kalanchoe & Winter Plants** / Sat., Jan. 13 - Mon., Feb. 12
- { **Omoto (Japanese Sacred Lily)** / Wed., Feb. 14 - Mon., Feb. 19
- { **Orchids** / Sat., Feb. 24 - Sun., Mar. 4
- { **Geraniums** / Sat., Mar. 10 - Wed., Apr. 18

### ∨ Okugai Tenji-jo (outdoors exhibits)

- { **Christmas Roses** / Sat., Feb. 24 - Sun., Mar. 4

### <Event>

- { **St. Valentine's Day Festival** / Sat., Feb. 10 - Mon., Feb. 12
  - 2 Various events such as concerts will be held during the period.

### <Lectures>

- { **Cacao Grinding Demonstration** / Event date and time have not been finalized yet.
- { **Junior Project** / Sun., Feb. 11 & Sun., Mar. 11 / j 11:00 am - noon k 1:30 pm - 2:30 pm
- { **How to Grow Shiitake (mushrooms)** / Mon., Feb. 12 / 10:00 am - 3:00 pm / Fee: ¥500 per piece of wood
  - 2 The first 30 participants will be accepted on the day.
  - 2 Please bring cotton work gloves with you and suit up with appropriate clothing.

Please feel free to contact the International Exchange Lounge at 082-247-9715.

E-mail: [golounge@pcf.city.hiroshima.jp](mailto:golounge@pcf.city.hiroshima.jp)

February 2018

- { How to Grow *Omoto* (Japanese Sacred Lily) / Sat., Feb. 17 / 1:30 pm - 2:30 pm
- { Christmas Roses / Feb. 24 (Sat.) & 25 (Sun.); Mar. 3 (Sat.) & 4 (Sun.) / 11:00 am - noon
- { Floral Decorations / Sun., Mar. 4 / j 11:00 am - noon k 1:30 pm - 2:30 pm
- { Lecture on Plant Dyeing / Sun., Mar. 18 / 1:30 pm - 3:30 pm

## ㇿ 5-Days Children's Museum of Culture and Science

(5-83 Moto-machi, Naka-ku 730-0011 / 222-5346 / 9:00 am - 5:00 pm / Closed on Feb. 5, 13, 14, 19 & 26 / Admission fee for planetarium is required (see below).  
/ <http://www.pyonta.city.hiroshima.jp/>)

### Planetarium

- I Admission Fee for Planetarium:  
Adults-¥510, Seniors & High school students-¥250, Junior High & Elementary school students-Free <sup>2</sup> Free admission for High school students on Saturdays (except on most national holidays and during school holidays). Admission fee for adults is ¥250 on the second Saturday of every month (except on most national holidays and during school holidays).
- ㊦ Planetarium Programs / Adults-¥510, Seniors & High school students-¥250  
E Norman the Snowman (a stop motion film) (45 min.) / Until Sun., Mar. 4  
Time Schedule  
v Weekdays: 11:00 am  
v Sat., Sun., national holidays:  
• 10:00 am , 3:00 pm  
• Feel the Earth ~ Music by Taro Hakase ~ / Until Mon., Jul. 16  
Time Schedule  
v Weekdays: 2:00 pm  
v Sat., Sun., national holidays:  
• 11:00 am , 2:00 pm
- ㊦ 360° Full Dome Show:  
Emperor Penguins in Antarctica (40 min.) / Until Fri., Apr. 27 / Adults-¥510, Seniors & High school students-¥250  
Time Schedule  
v Weekdays: 3:00 pm  
v Sat., Sun., national holiday: 1:00 pm
- ㊦ Refretarium: 2017/18 Winter Program / Until Fri., Mar. 16  
Time Schedule  
v Weekdays: 1:00 pm  
v Sat., national holiday: 4:00 pm  
Admission Fee  
High school students and above-¥200  
<sup>2</sup> This is a program to refresh your mind and body during lunch time while watching the

starry sky and listening to music. Although the main target of this program is adults, anyone who wishes to rejuvenate themselves is welcome.

- ㊦ Starry Sky Tour: Dwarf Planets - Solar System Exploration / Sundays between Sun., Jan. 28 and Sun., Apr. 15 / 4:00 pm - 4:50 pm

### Events

- ㊦ Exhibition: Meteorites / Sat., Feb. 17 - Sun., Mar. 11 / 3F, Tenji Hall / Free admission
- ㊦ The 10<sup>th</sup> Hiroshima Children's *Rakugo* (traditional Japanese comic story telling) Performance / Sun., Feb. 11 / 2:00 pm - 4:30 pm <sup>2</sup> Doors will open at 1:45 pm. / 1F, Apollo Hall (250 seats) / Free admission
- ㊦ Craft Workshops / Feb. 3 (Sat.), 12 (Mon.), 18 (Sun.) & 25 (Sun.) / 1:00 pm - 3:30 pm / For children under elementary school entry age, elementary school students (1<sup>st</sup> - 3<sup>rd</sup> grade) and their guardians / 3F, *Kosaku-shitsu* (Craft Room) / Fee: ¥30 for materials  
<sup>2</sup> Each day's program is different. For more information, please contact the museum.
- ㊦ Science Show: Experiments Using Daily Materials / Sun., Feb. 4 / • 1:30 pm - 2:00 pm , 3:00 pm - 3:30 pm / 1F, Science Studio / Fee: Free

μ The events listed below require advance applications.

To APPLY: Send an *ofuku-hagaki* (return postcard) to the museum, postmarked by each event's application deadline with the following information: applicants' names, address, telephone number, school year and the event name and time you wish to attend.

### Science Workshops

- ® Flight Science I : Make a Toy Airplane / 飛行機ひこうき  
の科学かがく 円盤型えんばんがた プロペラひこうき 飛行機ひこうき ("Hikou no kagaku I : Enban-gata propeller hikouki") / Sun., Mar. 11 / 1:30 pm - 4:00 pm / For elementary (3<sup>rd</sup> - 6<sup>th</sup> grade) & junior high school students / Fee: ¥400 / Closing date for applications: Sun., Feb. 25  
<sup>2</sup> 16 people will be selected at random by a drawing of names.

### Craft Workshops

- ® Stained Glass / 大人の創作教室おとな そうさくきょうしつ ステンドグラス ("Otona no sousaku kyoushitsu: Stained glass") / Sat., Mar. 3 / j 9:30 am - noon k 1:30 pm - 4:00 pm / For high school students and up / Fee: ¥1,500 / Closing date for applications: Sat., Feb. 17  
<sup>2</sup> 8 people will be selected at random by a drawing of names for each time slot.

Please feel free to contact the International Exchange Lounge at 082-247-9715.

E-mail: [golounge@pcf.city.hiroshima.jp](mailto:golounge@pcf.city.hiroshima.jp)

February 2018

**J Hiroshima City Asa Zoological Park**

(Asa-cho Dobutsuen, Asakita-ku 731-3355 / 838-1111 / 9:00 am - 4:30 pm / Closed on Thursdays / Adults-¥510, Seniors & High school students-¥170, Junior High & Elementary school students-Free / <http://www.asazoo.jp/>)

- **Let's Learn More about Animals through Manga & a Quiz Rally** / Fri., Feb. 2 - Sun., Feb. 25 J A quiz rally will be held on Sun., Feb. 11, 18 & 25. The first 1,000 people can participate each day.
- **Animal Capture Training Observation** / Sun., Feb. 4 / 2:00 pm <sup>2</sup> You can watch training on how to catch an escaped animal.  
<sup>2</sup> This will be canceled if it rains.
- **Valentine's Day at the Zoo** / Sat., Feb. 10 - Wed., Feb. 14 / 9:00 am - 4:00 pm  
J Drink tickets will be given to unmarried couples who visit the zoo.
- **Backyard Guide Tour** / Sat., Feb. 3, 10 & 17 / j 11:00 am k 1:30 pm / Please gather near the entrance at 9:00 am on each activity day. The first 20 - 40 people can participate. The number of participants will differ depending on where you visit. We will explore a different place on each trip.
- **Meet the Black Rhinoceros named Hana** / Sat., Feb. 24 / • 1:30 pm , 1:45 pm  
<sup>2</sup> Participation tickets will be distributed from 9:00 am at the main entrance until 10 spots are filled for each time slot.  
<sup>3</sup> The black rhinoceros, *Hana*, is the world's oldest living black rhinoceros.
- **Giant Salamander Facility Tour** / Sat., Feb. 24 / 11:00 am - 11:30 am <sup>2</sup> Participation tickets will be distributed from 9:00 am at the main entrance until 20 spots are filled.

**U Numaji Transportation Museum (Hiroshima City Transportation Museum)**

(2-12-2 Chorakuji, Asaminami-ku 731-0143 / 878-6211 / 9:00 am - 5:00 pm / Closed on Feb. 5, 13, 14, 19 & 26 / Adults-¥510, Seniors & High school students-¥250, Junior High school students and under-Free / <http://www.vehicle.city.hiroshima.jp>)

- Ž **Special Exhibition: Buses in Hiroshima** / Fri., Jan. 12 - Sun., Mar. 4 / 9:00 am - 5:00 pm / Fee: Museum admission  
<sup>2</sup> **EVENTS**<sup>2</sup>
- ® **Wear a Bus Driver's Uniform and Take a Photo** / Sun., Feb. 4 / • 10:30 am - noon , 1:30 pm - 3:00 pm / *Okugai Hiroba* (outdoor open space) / For children / Participation fee: Free  
<sup>2</sup> Please bring a camera with you.

- ® **Experience Driver's Vision** / Sat., Feb. 24 / • 10:00 am - noon k 1:30 pm -3:30 pm / 1F, Entrance Hall / Fee: Free

- Ž **Science Show: Experiment Show by Mr. O** / Sat., Feb. 10 - Mon., Feb. 12 / j 11:30 am - 11:50 am k 1:30 pm -1:50 pm f 2:30 pm - 2:50 pm / 1F, *Tamokuteki Hall* / Fee: Free
- Ž **Exhibition on a Streetcar Exposed to the A-Bomb** / Sat., Feb. 17 / j 11:00 am - noon k 1:30 pm - 3:00 pm / *Okugai Hiroba* (outdoor open space) / Fee: Free  
<sup>2</sup> Exhibition will be canceled if the weather is bad.
- Ž **Vehicle Land: Playing with Toy Vehicles** / Sat., Feb. 17 & Sun., Feb. 18 / 1:00 pm - 4:00 pm (entry permitted up to 3:45 pm.) / 1F, *Tamokuteki Hall* / Fee: Free
- Ž **Vehicle Park** / Sat., Feb. 17 & Sun., Feb. 18 / 1:00 pm - 3:30 pm / 1F, Craft Room / Fee: Free
- Ž **Children's Craft Workshops** / Feb. 4 (Sun.), 11 (Sun.), 12 (Mon.) & 25 (Sun.) / 1:00 pm - 3:30 pm / For preschoolers, elementary school students and their guardians / 1F, Craft Room / Fee: ¥50 for materials <sup>2</sup> The first 120 groups can participate on the day.
- Ž **Craft Workshop for Adults: Musical Box** / Sat., Feb. 24 / 10:00 am - 1:00 pm / 1F, Craft Room / For 16 years old and above / Fee: ¥900 for materials  
**TO APPLY:** Send an *ofuku-hagaki* (return postcard) with the applicant's name, age, address, telephone number, event date and the workshop name **大人の工作教室: オールゴールの動物車** (*Otona no kousaku kyoushitsu: orugoru no doubutsu-guruma*) to the museum by Wed., Feb. 14. 15 people will be selected at random by a drawing of names.

**Ø Hiroshima City Ebayama Museum of Meteorology**

(1-40-1 Eba-minami, Naka-ku 730-0835 / 231-0177 / 9:00 am - 5:00 pm / Closed on Mondays (except Feb. 12), Feb. 13, 14 & Mar. 22 / Adults-¥100, Seniors & High school students-¥50, Junior High & Elementary school students-Free (Free admission for High school students on Saturdays except during school holidays) / <http://www.ebayama.jp/>)

- T **Science Shows** / j 1:30 pm - 2:00 pm k 3:00 pm - 3:30 pm
- ® **Science Magic** / Feb. 4 (Sun.), 10 (Sat.), 11 (Sun.) & 12 (Mon.)
- ® **Liquid Nitrogen** / Feb. 17 (Sat.), 18 (Sun.), 24 (Sat.) & 25 (Sun.)

Please feel free to contact the International Exchange Lounge at 082-247-9715.

E-mail: [golounge@pcf.city.hiroshima.jp](mailto:golounge@pcf.city.hiroshima.jp)

February 2018



- ® **Balloons** / Sun., Mar. 4 & 11
- ® **Amazing Experiments** / Mar. 17 (Sat.), 18 (Sun.), 21 (Wed.), 24 (Sat.), 25 (Sun.) & 31 (Sat.)

T **Science Workshops** / 1:00 pm - 3:30 pm / For junior high school students and under

² The first 50 participants will be accepted from 10:00 am on the day.

- ® **Snowman-shaped Toy** / Sat., Feb. 3 / Fee: ¥100 for materials
- ® **Roly-poly Cat** / Sat., Mar. 3 / Fee: ¥60 for materials
- ® **Animal-shaped Rolling Toys** / Sat., Mar. 10 / Fee: ¥100 for materials

## H Hiroshima City Museum of History and Traditional Crafts

(2-6-20 Ujina-miyuki, Minami-ku 734-0015 / 253-6771 / 9:00 am - 5:00 pm / Closed on Feb. 5, 13, 14, 19 & 26 / Adults-¥100, Seniors & High school students-¥50, Junior high school students and under-Free

/ <http://www.cf.hiroshima.jp/kyodo/>)

P **Special Exhibitions: Ujina Port** / Thurs., Feb. 1 - Sun., Mar. 25

P **Workshops, etc.**

- ® **Spinning Threads** / Sat., Feb. 24 / 1:00 pm - 3:00 pm / Elementary school students and their guardians / Fee: ¥50 (Admission fee for the museum is also required.)  
² Applications will be accepted by phone or fax between Feb. 1 and 4. 10 groups will be selected at random by a drawing of names.
- ® **Make Wara-zori, flip-flops made of straw** / Sat., Mar. 10 / 1:00 pm - 3:00 pm / Elementary school students and up / Fee: ¥300 (Admission fee for the museum is also required.)  
² Applications will be accepted by phone or fax between Feb. 1 and 4. 20 people will be selected at random by a drawing of names.
- ® **Make a Bota-mochi, a rice cake covered with anko, bean jam** / Wed., Mar. 21 / 1:00 pm - 3:00 pm / Elementary school students / Fee: ¥200 (Admission fee for the museum is also required.)  
² Applications will be accepted by phone or fax between Mar. 1 and 4. 20 people will be selected at random by a drawing of names.



## 5 Hiroshima City Cinematographic and Audio-Visual Library

(3-1 Moto-machi, Naka-ku 730-0011 / 223-3525 / 10:00am - 8:00pm (Tue.-Sat.), 10:00 am -

5:00 pm (Sun., national holidays & August 6) / Closed on Mondays (except Feb. 12) & Feb. 13 /

**35mm Film Showings** Adults-¥510, Seniors & High school students-¥250, Junior high school students and under-Free; **Other Film Showings**

Adults-¥380, Seniors & High school students-¥180, Junior high school students and under-Free, Admission free for foreign students (Please show your student ID or the Hiroshima International Center Complimentary Pass.) / <http://www.cf.city.hiroshima.jp/eizou/>)

• **February Special Showings of Masterpieces of Japanese Film: Kon Ichikawa, a Film Director** (Screened in Japanese only)

I **Admission Fee: Adults-¥510, Seniors (65 years old and up) & High school students-¥250, Junior high & Elementary school students-Free**  
« Sat., February 3, 17 & 24: Free admission for high school students

Y **Sat., Feb. 3** / j 10:30 am k 2:00 pm  
f 6:00 pm

**Burma no tategoto / ビルマの竖琴 総集篇** (1956, Nikkatsu, 116 min., B&W, 35 mm film) / Director: Kon Ichikawa / Cast: Rentaro Mikuni, Shoji Yasui, Tatsuya Mihashi, Jun Hamamura

Y **Fri., Feb. 16** / j 10:30 am k 2:00 pm  
f 6:30 pm

**Enjo / 炎上** (1958, Daiei (Kyoto), 99 min., B&W, 35 mm film) / Director: Kon Ichikawa / Cast: Raizo Ichikawa, Ganjiro Nakamura, Tatsuya Nakadai, Michiyo Aratama

Y **Sat., Feb. 17** / j 10:30 am k 2:00 pm  
f 6:00 pm

**Kagi / 鍵** (1959, Daiei (Tokyo), 107 min., color, 35 mm film) / Director: Kon Ichikawa / Cast: Machiko Kyo, Ganjiro Nakamura, Tatsuya Nakadai, Junko Kano

Y **Wed., Feb. 21** / j 10:30 am k 2:00 pm  
f 6:30 pm

**Nobi / 野火** (1959, Daiei (Tokyo), 104 min., B&W, 35 mm film) / Director: Kon Ichikawa / Cast: Eiji Funakoshi, Osamu Takizawa, Mickey Curtis, Jun Hamamura

Y **Thurs., Feb. 22** / j 10:30 am k 2:00 pm  
f 6:30 pm

**Ototo / おとと** (1960, Daiei (Tokyo), 98 min., color, 35 mm film) / Director: Kon Ichikawa / Cast: Keiko Kishi, Hiroshi Kawaguchi, Kinuyo Tanaka, Masayuki Mori

Please feel free to contact the International Exchange Lounge at 082-247-9715.

E-mail: [golounge@pcf.city.hiroshima.jp](mailto:golounge@pcf.city.hiroshima.jp)

February 2018

Ÿ Fri., Feb. 23 / j 10:30 am k 2:00 pm  
f 6:30 pm

**Kuroi ju-nin no onna / 黒い十人の女** (1961, Daiei (Tokyo), 102 min., B&W, 35 mm film) / Director: Kon Ichikawa / Cast: Fujiko Yamamoto, Keiko Kishi, Eiji Funakoshi, Mariko Miyagi

Ÿ Sat., Feb. 24 / j 10:30 am k 2:30 pm

**Tokyo Olympiad / 東京オリンピック** (1965, Tokyo Olympiad Eiga Kyokai, 169 min., color, 35 mm film) / Director: Kon Ichikawa / Writers: Kon Ichikawa, Natto Wada, Yoshio Shirasaka, Shuntaro Tanikawa

Ÿ Sun., Feb. 25 / j 10:30 am k 2:00 pm

**Watashi wa nisai / 私は二歳** (1962, Daiei (Tokyo), 87 min., color, 35 mm film) / Director: Kon Ichikawa / Cast: Fujiko Yamamoto, Eiji Funakoshi, Kumeko Urabe, Kyoko Kishida

Ÿ Wed., Feb. 28 / j 10:30 am k 2:00 pm  
f 6:30 pm

**Taiheiyo hitori bocchi / 太平洋ひとりぼっち** (1963, Ishihara Promotion, Nikkatsu, 100 min., color, 35 mm film) / Director: Kon Ichikawa / Cast: Yujiro Ishihara, Ruriko Asaoka, Masayuki Mori, Kinuyo Tanaka

• **Family Theater**  
(Animated Films are in Japanese only)

I **Admission Fee:** Adults-¥380, Seniors (65 years old and up) & High school students-¥180, Junior high & Elementary school students-Free

Ÿ Sun., Feb. 18 / j 10:30 am k 2:00 pm /  
**Sinbad: Sora tobu hime to himitsu no shima / シンドバッド 空とぶ姫と秘密の島** (2015, Project Sinbad, 50 min., color, Blu-ray) / Director: Shinpei Miyashita / Cast (voice): Tomo Muranaka, Momoko Tanabe, Takeshi Kaga, Hiroko Yakushimaru

• **Documentary Films: Architectures & Arts in Europe** (Screened in original language with Japanese subtitles or, in Japanese only)

I **Admission Fee:**  
Adults-¥380, Seniors (65 years old and up)-  
¥180, Senior high, Junior high & Elementary  
school students-Free  
« Sat., February 10: Free admission for high  
school students

Ÿ Sun., Feb. 4 / j 10:30 am k 2:00 pm  
**Cathedrals of Culture** (2014, Germany, Denmark, Norway, Austria, France, USA, Japan, 165 min., color, Blu-ray, Japanese subtitles) / Director: Wim Wenders, Michael Glawogger, Michael Madsen, Robert Redford, Margreth Olin, Karim Ainouz

Ÿ Wed., Feb. 7 / j 2:00 pm k 6:30 pm

**How Much Does Your Building Weigh, Mr. Foster?** (2010, UK, 76 min., color, Blu-ray, Japanese subtitles) / Director: Norberto López Amado, Carlos Carcas / Cast: Norman Foster, Buckminster Fuller, Richard Rogers, Richard Long, Bono, Cai Guo-Qiang

Ÿ Thurs., Feb. 8 / j 2:00 pm k 6:30 pm

**Eames: The Architecture and the Painter** (2011, USA, 84 min., color, B&W, Blu-ray, Japanese subtitles) / Director: Jason Cohn, Bill Jersey / Cast: Charles Eames, Ray Eames, Lucia Eames

Ÿ Fri., Feb. 9 / j 2:00 pm k 6:30 pm

**Sagrada: El Misteri de la Creació** (2012, Switzerland, 94 min., color, Blu-ray, Japanese subtitles) / Director: Stefan Haupt / Cast: Etsuo Sotoo, Jordi Bonet i Armengol

Ÿ Sat., Feb. 10 / j 2:00 pm k 6:00 pm

**Florence and the Uffizi Gallery** (2015, Italy, 97 min., color, Blu-ray, Japanese-dubbed version) / Director: Luca Viotto / Cast: Simon Merrells, Antonio Natali, Marco Ciatti / Japanese narration: Kaoru Kobayashi



Please feel free to contact the International Exchange Lounge at 082-247-9715.

E-mail: [golounge@pcf.city.hiroshima.jp](mailto:golounge@pcf.city.hiroshima.jp)

February 2018



# 図書だより

2018年2月

今月のおすすめ図書

## 星守る犬

村上 たかし / 著 (双葉社, 2009年)

## 続・星守る犬

村上 たかし / 著 (双葉社, 2011年)

## さくら

西 加奈子 / 著 (小学館, 2007年)

## あまからカルテット

柚木 麻子 / 著 (文藝春秋, 2013年)

## きれいなシワの作り方 ~ 淑女の思春期病

村田 沙耶香 / 著 (マガジンハウス, 2015年)

本のリクエストなど図書コーナーに関するご要望はスタッフまでお気軽にお申し出ください。

¥◎

## 図書コーナー

場所: 広島国際会議場 1F・国際交流ラウンジ (平和記念公園内)  
TEL (082)247-9715

開館時間: 9:00am - 7:00pm (4月1日から9月30日まで)

9:00am - 6:00pm (10月1日から3月31日まで)

休館日: 12月29日 ~ 1月3日

貸出: 図書は2週間を期限として、1回3冊まで借りることができます。

初めて利用する際には、住所や在留期間(外国人の方)を証明するもの(運転



Please feel free to contact the International Exchange Lounge at 082-247-9715.

E-mail: [golounge@pcf.city.hiroshima.jp](mailto:golounge@pcf.city.hiroshima.jp)

February 2018

めんきょしょう がくせいしょう  
免許証・学生証・パスポート・在留カードなど)を提示して下さい。



# Damaged & Outdated Books for Free

## 除籍図書資料の無料配布

International Exchange Lounge is discarding about 190 foreign language books and 40 Japanese books, which are damaged or outdated. We will distribute them for free to anyone who wants them during the following period.

国際交流ラウンジにて所蔵している図書資料のうち、古くなったものや、利用されなくなって除籍した図書資料（洋書・約210冊、和書・約40冊）を市民の皆様<sup>みなさま</sup>に無料で配布いたします。語学学習や、興味のある国の情報収集にお役立てください。

PERIOD: Sat., Feb 10 – Fri., Feb. 16, 2018

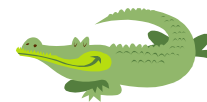
PLACE: International Exchange Lounge  
(International Conference Center  
Hiroshima 1F)

HOURS: 9:00 am – 6:00 pm

期間:平成30年2月10日(土)~2月16日(金)

場所:広島国際会議場1階 国際交流ラウンジ

開館時間: 9:00 ~ 18:00



Please come and help yourself. (Up to 5 books per person)

μ This service is on a first-come, first-served basis.

ご希望のものをお持ち帰りください。ただし、お一人様5冊までとさせていただきます。

\*なくなり次第終了いたします。

### Available Books

#### Foreign Language Books:

Novels, Tour Guidebooks, Language Textbooks, etc. (about 210 books)

#### Japanese Books:

Books for Study Abroad, Tour Guidebooks, etc. (about 40 books)

### 主な配布図書資料

洋書: 小説、ガイドブック、語学テキストなど(約210冊)

和書: 留学案内、地域紹介など(約40冊)



INQUIRIES: International Exchange Lounge

問い合わせ: 国際交流ラウンジ

Tel. (082)247-9715 Fax. (082)242-7452

E-mail: [golounge@pcf.city.hiroshima.jp](mailto:golounge@pcf.city.hiroshima.jp)



## Assisting with International Cooperation with Used Stamps & PET Bottle Caps

The International Exchange Lounge collects used stamps to assist international cooperation activities. Through the volunteer groups, JOCS\*, the collected stamps are sold to collectors to raise money. With the profit, items such as milk and medicine are purchased and doctors as well as nurses are dispatched throughout Asia and other continents. We also collect PET bottle caps in order to support the "Ecocap Action". The sales profits obtained by recycling caps are donated to the Japan Committee "Vaccines for the World's Children" (JCV).

\*JOCS: Japan Overseas Christian Medical Cooperative Service

### HOW TO COLLECT:

- © **Stamps** ☪ When you cut stamps from envelopes, please leave 5 mm of paper around them. It is not necessary to remove them from the envelope. Torn or folded stamps cannot be accepted.
- © **PET Bottle Caps** ☪ Only PET bottle caps for drinks or mineral water are accepted. Please wash the caps and tear off the sticker if it has one. This is in order to avoid damaging the recycling machines. Things such as metal caps and pull-top tabs cannot be accepted.

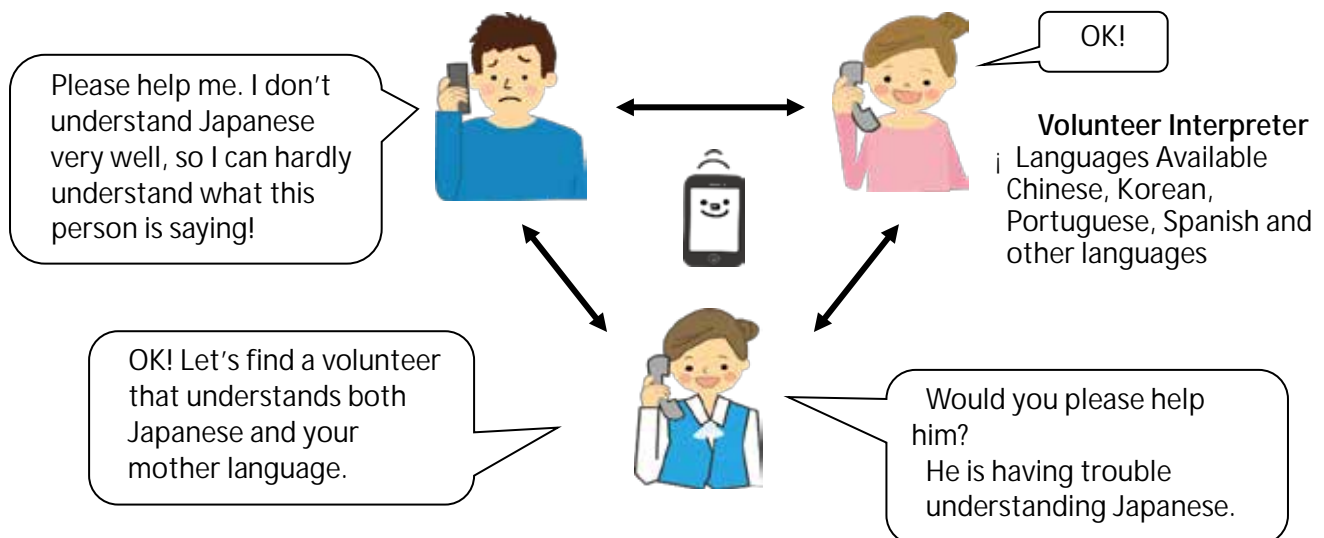
## Trio-Phone Service (Multilingual Interpretation over the Telephone)



### What is Trio-Phone ?

Trio-Phone Service allows three people to have a conversation at the same time through the telephone. If you are having difficulties communicating in Japanese, call the International Exchange Lounge (082-247-9715).

A volunteer interpreter will help you through the Trio-Phone Service!



For further information, please ask the staff at the International Exchange Lounge.

Please feel free to contact the International Exchange Lounge at 082-247-9715.

E-mail: [golounge@pcf.city.hiroshima.jp](mailto:golounge@pcf.city.hiroshima.jp)

February 2018

# Garbage Disposal Information

Separate garbage properly and take it to the collection site by 8:30am on the designated day. Please do NOT take garbage to the site on the night before. Garbage collection days vary depending on where you live and the category of the refuse. For further details, consult your local ward office or your neighbors to be sure of the proper disposal method. "Hiroshima 8", a handbook on how to separate garbage, and "Hiroshima City Garbage Disposal Guidelines for the 2017 fiscal year", a garbage chart with schedules of garbage collection days, are available at ward offices, branch offices and community halls. The Handbook and Guidelines are translated into English, Spanish, Portuguese, Chinese and Korean. These are also available at the International Exchange Lounge (International Conference Center Hiroshima), so please ask the staff if you need them.

---

HIRO CLUB NEWS is published monthly and provides essential and entertaining information about life in Hiroshima City. It is available in print at the International Exchange Lounge, and online at our website: <http://www.pcf.city.hiroshima.jp/ircd/english/hiroclubnews/> Selected information is also available in other languages including Chinese, Portuguese and Spanish.

HIRO CLUB NEWS は広島的生活情報やイベント等の情報を掲載している英語の月刊情報誌です。国際交流ラウンジにて配布しています。当課ホームページにも掲載しています。

英語版の情報の一部を抜粋した中国語・ポルトガル語・スペイン語版も作成しています。

\* \* \* \* \*

Edited and published by the Hiroshima Peace Culture Foundation  
International Affairs Department, International Relations and Cooperation Division  
Tel: (082) 242-8879, Fax: (082) 242-7452, E-mail: [internat@pcf.city.hiroshima.jp](mailto:internat@pcf.city.hiroshima.jp)  
International Exchange Lounge  
Tel: (082) 247-9715, E-mail: [golounge@pcf.city.hiroshima.jp](mailto:golounge@pcf.city.hiroshima.jp)  
Website: <http://www.pcf.city.hiroshima.jp/ircd/english/index.html>

編集・発行 公益財団法人広島平和文化センター国際部国際交流・協力課 国際交流ラウンジ  
〒730-0811 広島市中区中島町1番5号