

Hiro Club News



Hinamatsuri ひなまつり : *For your cultural life in Hiroshima*

March 3rd is the *Hina* Festival (Doll's Festival), a day to wish girls good health and long life. Most families with daughters celebrate by displaying *hina* dolls. The dolls are offered sweetened puffed rice (*hina-arare*), white sake containing rice malt (*shirozake*), colored lozenge-shaped rice cakes (*hishi-mochi*), and so on.

Hina dolls are displayed on a special stand (*hina-dan*), with five or more tiers covered in red cloth or felt. They are dressed in court costumes from the Heian period (794-1192). The dolls on the top shelf represent the Emperor and Empress. On the second shelf are three ladies in waiting, five court musicians are on the third shelf, on the fourth are government ministers, and on the bottom shelf are three court officials.

In the old days, people transferred their own impurities and troubles to dolls and floated them away down the stream. This became associated with the dolls girls played with in the Heian period and became known as *Hina* Festival. The practice of displaying *hina* dolls on shelves began in the middle of the Edo period (1603-1868) (Abstracted from The Japanese-English Dictionary for Conversation about Japan, pp578-580, Obunsha).

The *Hina* doll presentation in Miyajima will be held from March 21st. You can see antique *hina* dolls which have been passed down from generation to generation in Miyajima (please see the "Seasonal Event Information" section for more information).

March 2018

March 2018

✓ *City Office Notices*

✓ *Movie Theaters*

✓ *Bilingual TV Programs*

✓ *Concerts & Plays*

✓ *Museums*

✓ *Sports*

- *Hiroshima Toyo Carp Schedule 2018*
- *Sanfrecce Hiroshima FC Game Schedule 2018*
- *Hiroshima Dragonflies 2017 – 2018 B2 League*

✓ *Events*

- *Seasonal Event Information*
- *Municipal Facilities*

✓ *Lounge & Library*

- *Library News*
- *Trio-phone Service (multilingual interpretation using the telephone)*

Hiroshima Peace Culture Foundation
International Exchange Lounge

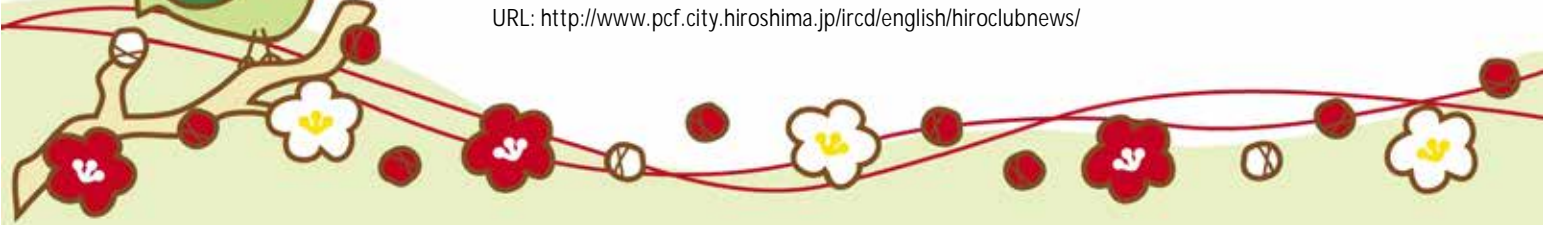
1-5 Nakajima-cho, Naka-ku, Hiroshima 730-0811

E-mail: golounge@pcf.city.hiroshima.jp

Tel. 082-247-9715 Fax. 082-242-7452

« Visit the HIRO CLUB NEWS WEBSITE for information online. «

URL: <http://www.pcf.city.hiroshima.jp/ircd/english/hiroclubnews/>



City Office Notices

City Office Notices contains selected information from the Hiroshima City Newsletter, **ひろしま市民と市政 Hiroshima Shimin to Shisei**. City Office Notices is published twice a month and available in print at the International Exchange Lounge, and online at our website: <http://www.pcf.city.hiroshima.jp/ircd/english/hiroclubnews>

March 1, 2018

Topics

- * Registration Time Will Be Extended at Ward Offices from March 26 to April 2
- * Procedures for your Light Motor Vehicle Tax and Registration
- * Seeking Volunteers to Cultivate Rice for Countries Suffering Food Shortages
- * Recycle More Plastics!

Registration Time Will Be Extended at Ward Offices from March 26 to April 2

区役所窓口を平日時間延長、土・日曜日開庁します(P3)

The moving season is upon us as we wind down to the end of the fiscal year and many of us prepare to start new jobs and move into new homes. In order to improve municipal services during this busy time the City has decided to extend their opening hours.

From Monday, March 26 to Monday, April 2, ward offices will extend opening hours to 7:00 pm on weekdays in order to handle the administrative procedures necessary for your moving-in or out. Ward offices will also open from 8:30 am to noon on Saturday, March 31 and Sunday, April 1.

If you have any questions about what kind of documents you need to fill out, please call your local ward office in advance. Generally, services are only available in Japanese. All calls after business hours on March 26 – April 2 will be transferred to each individual reception via the gatekeeper's office. You can also view the city's official website for more details.

Please be advised that in some cases, you may not be able to complete all moving procedures in one day.

EXTENDED HOURS:

Saturday, March 31 and Sunday, April 1

8:30 am – Noon

Weekdays on March 26 – April 2

8:30 am – 7:00 pm

NOTE: Please bring your ID such as an individual number card for the My Number system, a driver's license or passport, etc. and *Inkan* (stamp-styled *inkan* is not acceptable).

INQUIRIES: Local Ward Offices

<ul style="list-style-type: none"> - Moving in or out notification Jumin hyono Ido Todoke (住民票の異動届) - Inkan registration Inkan Toroku (印鑑登録) 	Shimin Ka (Citizens Affairs Division)	Naka 504-2551 Minami 250-8938 Asaminami 831-4928 Aki 821-4908	Higashi 568-7707 Nishi 532-0930 Asakita 819-3907 Saeki 943-9708
<ul style="list-style-type: none"> - Changes to your National Health Insurance KokuminKenko Hoken (国民健康保険) - Address change for your National Pension Premium KokuminNenkin (国民年金) 	Hoken Nenkin Ka (National Insurance & Pension Division)	Naka 504-2555 Minami 250-8941 Asaminami 831-4929 Aki 821-4910	Higashi 568-7711 Nishi 532-0933 Asakita 819-3909 Saeki 943-9712
<ul style="list-style-type: none"> - Issuance of recognition letter for the Child Allowance Jido Teate (児童手当) - Certification of recipients for medical expenses for children Kodomo iryohi (こども医療費受給者資格) and its alterations 	Hoken Fukushi Ka (Health Services & Welfare Division) A temporary window will be set up at Shimin Ka offices.	Naka 504-2569 Minami 250-4131 Asaminami 831-4945 Aki 821-2813	Higashi 568-7733 Nishi 294-6342 Asakita 819-0605 Saeki 943-9732

Please note that municipal services other than the above will not be available after 5:15 pm, as usual.

Procedures for Your Light Motor Vehicle Tax and Registration

軽自動車などの申告・手続きをお忘れなく(P4)

If you meet one of the conditions below, you must file the relevant documents for tax or registration.

- Y When you purchase a light-vehicle or move to Hiroshima City with your light-vehicle, you must file for the tax within 15 days.
- Y When you give up your light-vehicle or move out of Hiroshima City with your light-vehicle, you must report this change to the relevant office within 30 days.

(1) Motor-assisted bicycles (under 125cc displacement) and small-sized special motor vehicles

File at your nearest tax office:

Chuo (Central District)	504-2558	Minami	250-8946
Tobu (Eastern District)	568-7715	Aki	821-4913
Seibu (Western District)	532-0937	Saeki	943-9716
Hokubu (Northern District)	831-4932	Asakita	819-3913

Your nearest branch office will also accept any inquiries you may have about any vehicle you have given up.

(2) Two wheel light-vehicles (between 125cc and 250cc displacement)

In addition to filing for the light motor vehicle tax, you must also apply for a vehicle inspection certificate within 15 days of purchasing or moving with a vehicle.

FILE & INQUIRE AT:

Ken Kei Jidosha Kyokai (Prefectural Light Motor Vehicle Association)

Tel. 532-5507 Fax. 532-5508 Address: 4-13-13-3 Kanon-shin-machi, Nishi-ku

(3) Three or four wheel light-vehicle

In addition to filing for the light motor vehicle tax, you must also apply for a vehicle inspection certificate within 15 days of purchasing or moving with a vehicle.

FILE & INQUIRE AT:

Kei-jidosha Kensa Kyokai Hiroshima Shukan Jimusho (Light Motor Vehicle Inspection Association, Hiroshima Office)

Tel. 050-3816-3080 Fax. 503-8524 Address: 4-13-13-4 Kanon-shin-machi, Nishi-ku

(4) Two wheel small-sized special motor vehicle (above 250cc displacement)

In addition to filing for the light motor vehicle tax, you must also apply for a vehicle inspection certificate within 15 days of purchasing or moving with a vehicle.

FILE & INQUIRE AT:

Chugoku Unyu Kyoku Hiroshima Unyu Shikyoku (District Transport Bureau, Hiroshima Office)

Tel. 050-5540-2068 This number connects you to an automated voice information service (Japanese). Fax. 295-3508 Address: 4-13-13-2 Kanon-shin-machi, Nishi-ku

NOTE: Please note that the Light motor vehicle tax will be levied on those who possess a light-vehicle and parking space in Hiroshima City as of April 1. Even if you give up your car on April 2, 2018 or thereafter, you must pay taxes for the 2018 fiscal year.

Seeking Volunteers to Cultivate Rice for Countries Suffering Food Shortages

食糧難の国へ送る米づくり(P5)

The harvested rice will be sent to the Republic of Mali.

DATE & TIME: Saturdays, May 19, July 7 and October 20 9:00 am – Noon

To be postponed in case of rain.

PLACE: Yoshiyama, Numata-cho, Asaminami-ku

TO APPLY: Send a postcard with all the participants' names, ages (grade for children), addresses and telephone numbers to 7310193 Asaminami Ward Office, Agriculture & Forestry Division (Note: No specific address is needed) by Thursday, March 15. 150 applicants will be selected by a drawing of names.

INQUIRIES: *Asaminami Kuyakusho* (Ward Office), *Norin Ka* (Agriculture & Forestry Division)
Tel. 831-4950 Fax. 877-2299

Recycle More Plastics!

しっかり分けてリサイクル(『市民と市政』2018.2.15 P4、5)

Hiroshima City encourages citizens to sort household wastes properly into 8 categories. More than half of household waste is plastic bottles and recyclable plastics. The city has been collected plastic bottles since 2001 and other recyclable plastics since 2004. The following shows how to sort and recycle your household plastic wastes.

Plastic bottles

Plastic bottles are collected once a week.



All plastic bottles with the above symbol can be collected as recyclable plastic bottles.

These bottles are made from Polyethylene Terephthalate, which is highly recyclable and is recycled into plastic bottles, garments or egg containers. Please collect these plastic bottles and recycle them.



- G Remove labels and caps.
Labels and caps can be collected as recyclable plastics.



- G Wash the bottles thoroughly.

- G Empty the bottles.



- G Crush the bottles.
Do not cut the bottles but crush them.



- G Place the bottles into a clear/transparent disposal bag.

- G Put all the bottles into one bag.
Do not separate into small bags.



Recyclable Plastics



Recyclable plastics are collected once a week.

All Recyclable plastics with the above symbol can be collected as recyclable plastics. Other plastics without the above symbol can be collected as other plastic wastes (*Sonotano-pura*). Recyclable plastics can become imitation trunks used in parks or pallets for forklift trucks.



- G Empty the bottles, tubes etc.
Leftovers can contaminate other recyclables.
- G Wash thoroughly.
- G Cut plastics (including packagings) into small pieces shorter than 30 cm.
- G Dispose other plastics without a recyclable plastic symbol as other plastic wastes (*Sonotano-pura*).
- G Place the recyclable plastics into a clear/transparent disposal bag.
- G Put all the recyclable plastics into one bag
Do not separate into small bags.



INQUIRIES: *Gyomu Daiichi Ka* (Operation Division I) Tel. 504-2219 Fax. 504-2229

Hiroshima Peace Culture Foundation News

Event schedules are subject to change. Please contact event organizers to confirm listed information.

March 2018

CIR Question & Answer Day

Are you looking for advice about Hiroshima?

Come in for a chat with our CIR, Andrew Dempster!

DATE & TIME: Wednesday, March 28 1:30 pm – 3:30 pm

PLACE: International Exchange Lounge

(International Conference Center Hiroshima 1F, 1-5 Nakjima-cho, Naka-ku)

RESERVATIONS ARE REQUIRED: Reservations can be made in person or by telephone at the International Exchange Lounge Tel. 247-9715 (Lounge open hours 9:00 am – 6:00 pm)

INQUIRIES: International Exchange Lounge, International Relations and Cooperation Division, Hiroshima Peace Culture Foundation Tel. 247-9715

Special Exhibition: The Twinkling Stars Know Everything

Collection of parents' memoirs of their lost children who were students of Hiroshima Itchu Junior High School which was annihilated by the atomic bomb.

PERIOD: Monday, January 1 – Saturday, December 29, 2018

PLACE: Hiroshima National Peace Memorial Hall for the Atomic Bomb Victims, B1

ADMISSION: Free

INQUIRIES: Hiroshima National Peace Memorial Hall for the Atomic Bomb Victims
Tel. 543-6271 Fax. 543-6273

Video Screening and A-bomb Legacy Successor's Talk

Hiroshima Peace Memorial Museum

Open to the public, no reservations required. Please feel free to drop by!

Video "HIROSHIMA - Message from Hibakusha"

This is a current video produced in accordance with the East Building's reopening. Approx. 22 min. Provided with English subtitles.

SCHEDULE:

8:45 am-	9:15 am-	9:45 am-	10:15 am-	*
3:15 pm-	3:45 pm-	4:15 pm-		

*11:00 am - 3:00 pm: A-bomb
Legacy Successor's Talk

A-bomb Legacy Successor's Talk

A-bomb Legacy Successors have taken over the A-bomb survivor's experience and give testimony on their behalf. A-bomb Legacy Successors offer lectures in which they present the A-bomb survivors' experiences, the reality of the atomic bombing, and desires for peace. Approx. 60 min.

SCHEDULE: 11:00 am (Japanese), 12:30 pm (Japanese), 2:00 pm (English)

PLACE: Video Theater, 1F, East Building of Hiroshima Peace Memorial Museum

ADMISSION: Free

INQUIRIES: Curatorial Division, Hiroshima Peace Memorial Museum Tel. 241-4004 Fax. 542-7941
<http://hpmmuseum.jp/?lang=eng>



The **International Conference Center Hiroshima** is used for various purposes such as exhibitions and parties. Its large auditorium, which can accommodate 1,504 people, is ideal for concerts, lectures, and domestic and international conferences. The ICCH also includes the International Conference Hall, as well as small, medium, and large conference rooms. In all, the ICCH has five floors, three above ground and two basement floors.
Tel. 242-7777 (9:00 am – 9:00 pm) URL: <http://www.pcf.city.hiroshima.jp/icch/english.html>

Please feel free to contact to the International Exchange Lounge at 082-247-9715.

E-Mail: golounge@pcf.city.hiroshima.jp

March 2018

Movie Theaters

March 2018



Here is a general list of movies being shown in theaters around Hiroshima. Due to unpredictable changes in scheduling, listings are subject to change without notice. Foreign films are usually in their original language with Japanese subtitles. When not specified, the admission is **¥1,800** for adults. Theaters offer various kinds of admission discount services, so please inquire at each theater for more information.

SALON CINEMA

[Hiroshima Toei Plaza Bldg. 8F, 16-10 Hatchobori, Naka-ku / Tel: 082-962-7772 / URL: <http://www.johakyu.co.jp/>]

Until Mar. 16 **追捕 / Manhunt / '17 China**
 From Feb. 1 **Three Billboards Outside Ebbing, Missouri / '17 UK, USA**
 From Feb. 23 **The Beguiled / '17 USA**
 From Mar. 1 **The Shape of Water / '17 USA**
 From Mar. 17 **The Sense of an Ending / '17 UK**
 From Mar. 17 **The 9th Life of Louis Drax / '15 Canada, UK**

HATCHOZA

[Fukuya Department Store Hatchobori 8F, 6-26 Ebisu-cho, Naka-ku / Tel: 082-546-1158 / URL: <http://www.johakyu.co.jp/>]

From Feb. 16 **The Greatest Showman / '17 USA**
 Until Mar. 9 **An Inconvenient Sequel: Truth to Power / '17 USA**

YOKOGAWA CINEMA Tel : 231-1001

[3-1-12 Yokogawa-cho, Nishi-ku / Tel: 082-231-1001 / URL: <http://yokogawa-cine.jugem.jp/>]

Mar. 8 – 21 **Diamant Noir / '16 France, Belgium**
 Mar. 8 – 21 **Liberami / '16 Italy, France**
 Mar. 15 – 31 **Safari / '16 Austria**

AEON CINEMA HIROSHIMA

[Hiroshima Danbara Shopping Center 6F, 1-3-52 Danbara-minami, Minami-ku / Tel : 082-261-3770 / URL: <http://www.aeoncinema.com/cinema/hiroshima/>]

Until Mar. 8 **Star Wars: The Last Jedi / '17 USA**
 From Feb. 16 **A Single Rider / '17 Korea**
 From Mar. 1 **Black Panther / '18 USA**
 From Apr. 6 **Jumanji: Welcome to the Jungle / '17 USA**

109 CINEMAS

[Alpark 3F (north bldg.), 4-7-1 Kusatsu-minami, Nishi-ku / Tel: 05700-002-109 / URL: <http://www.109cinemas.net/Hiroshima>]

From Dec. 15 **Star Wars: The Last Jedi / '17 USA**
 From Jan. 19 **Geostorm / '17 USA**
 From Feb. 1 **Three Billboards Outside Ebbing, Missouri / '17 UK, USA**
 From Feb. 9 **追捕 / Manhunt / '17 China**
 From Feb. 16 **The Greatest Showman / '17 USA**
 From Mar. 1 **Black Panther / '18 USA**
 From Mar. 1 **The Shape of Water / '17 USA**
 From Mar. 1 **The 15.17 to Paris / '18 USA**
 From Mar. 21 **Tomb Raider / '17 USA**
 From Mar. 30 **The Post / '17 USA**
 From Mar. 30 **Valerian and the City of a Thousand Planets / '17 France**

TOHO CINEMAS MIDORII

[Fuji Grand 3F, 1-5-2 Midorii, Asaminami-ku / Tel : 082-831-8060 / URL: <http://www.tohotheater.jp/>]
 Adults-¥1,800, University students-¥1,500, From preschoolers (3 years old and under) to High school students-¥1,000,

From Feb. 9 **追捕 / Manhunt / '17 China**
 From Feb. 16 **The Greatest Showman / '17 USA**
 From Mar. 1 **The 15.17 to Paris / '18 USA**
 From Mar. 1 **The Shape of Water / '17 USA**
 From Mar. 1 **Black Panther / '18 USA**
 From Mar. 21 **Tomb Raider / '17 USA**
 From Mar. 30 **The Post / '17 USA**
 From Mar. 30 **Red Sparrow / '18 USA**
 From Apr. 6 **Jumanji: Welcome to the Jungle / '17 USA**



Please feel free to contact the International Exchange Lounge at 082-247-9715.

E-mail: golounge@pcf.city.hiroshima.jp

March 2018

HIROSHIMA WALD 11

[AEON Mall Hiroshima Fuchu 4F, 2-1-1 Osu, Fuchu-cho,
Aki-gun / Tel : 082-561-0600 /
URL: <http://kinezo.jp/pc/wald11>]

From Feb. 9	追捕 / Manhunt / '17 China
From Feb. 16	The Greatest Showman / '17 USA
From Mar. 1	Black Panther / '18 USA
From Mar. 1	The 15.17 to Paris / '18 USA
From Mar. 21	Tomb Raider / '17 USA
From Mar. 30	The Post / '17 USA
From Mar. 30	Red Sparrow / '18 USA
From Mar. 30	Valerian and the City of a Thousand Planets / '17 France
From Apr. 6	Jumanji: Welcome to the Jungle / '17 USA
From Apr. 13	Pacific Rim Uprising / '18 USA

Movie Showings at 10 am in the Morning

Feb. 24 – Mar. 9	Bakushu / '51 Japan
Mar. 10 – 23	Guess Who's Coming to Dinner / '67 USA

T-JOY HIGASHI HIROSHIMA

[Fuji Grand Higashi Hiroshima 3F, 4405 Misonou, Saijo-cho, Higashi Hiroshima-shi / Tel : 082-493-6779 / URL: http://kinezo.jp/pc/t-joy_hiroshima]

From Dec. 15	Star Wars: The Last Jedi / '17 USA
From Feb. 9	追捕 / Manhunt / '17 China
From Feb. 16	The Greatest Showman / '17 USA
From Feb. 17	Gifted / '17 USA
From Mar. 1	Black Panther / '18 USA
From Mar. 1	The 15.17 to Paris / '18 USA
From Mar. 21	Tomb Raider / '17 USA
From Apr. 6	Jumanji: Welcome to the Jungle / '17 USA



Please feel free to contact the International Exchange Lounge at 082-247-9715.

E-mail: golounge@pcf.city.hiroshima.jp

March 2018



Bilingual TV Programs

March 2018

#1: NHK Sogo	#4: Hiroshima TV
#2: NHK E Tele	#5: Home TV
#3: RCC	#8: TSS

² Some changes may occur because of special programming.

NEWS

Monday - Sunday

NHK News 7 / 7:00 pm – 7:30 pm (#1)

Monday - Friday

News Watch 9 / 9:00 pm – 10:00 pm (#1)

REGULAR PROGRAMS

Thursday

Through the Wormhole / 10:00 pm – 10:45 pm (#2) ² Until the 8th

TED / 11:00 pm – 11:25 pm (#2)

² Rerun: Sat., 1:25 am – 1:52 am

² Until the 29th

Friday

Lectures by Professor Diamond / 10:00 pm – 10:30 pm (#2) ² Rerun: Mon., 12:45 am – 1:17 am
² Until the 23rd

Saturday

Dramatic Earth (Documentary Program) / 7:00 pm – 7:45 pm (#2)

² Rerun: Mon., midnight – 12:45 am

² Except the 10th & the 17th

DRAMAS

Monday

Hawaii Five-0 Season 2 ('11 USA) / the 12th: 1:50 am – 2:45 am; the 19th: 1:25 am – 2:20 am; the 26th: 1:55 am – 2:50 am (#4)
² Except the 5th

Wednesday

The Thundermans Season 3 ('15 USA) / 7:25 pm – 7:50 pm (#2)

Saturday

100 Things to Do Before High School ('14 USA) / 6:25 pm – 6:50 pm (#2) ² Until the 10th

ANIMATIONS

Saturday

Curious George / 8:35 am – 9:00 am (#2)
SpongeBob SquarePants / 6:00 pm – 6:25 pm (#2) ² Except the 31st

Sunday

Thomas & Friends / 5:30 pm – 5:50 pm (#2)

MOVIES

- 3rd Jagten / '12 Denmark / 12:45 am – 3:04 am (#3)
- 3rd Gods of Egypt / '16 USA / 9:00 pm – 11:10 pm (#8)
- 4th Kidnapping Mr. Heineken / '14 Belgium, UK, Netherlands / 2:08 am – 4:02 am (#3)
- 10th Mit a Tova / '14 Israel / 12:45 am – 2:42 am (#3)
- 11th Komodo vs. Cobra / '05 USA / 1:50 am – 3:45 am (#8)
- 16th Monsters University / '13 USA / 7:57 pm – 9:54 pm (#8)
- 17th Brick Mansions / '14 France, Canada / 12:50 am – 2:43 am (#3)
- 17th Non-Stop / '14 USA, France / 9:00 pm – 11:10 pm (#8)
- 18th Crossing Point / '16 USA / 1:50 am – 3:45 am (#8)
- 18th The Amazing Spider-Man / '12 USA / 2:08 am – 4:00 am (#3)
- 23rd Toy Story 3 / '10 USA / 9:00 pm – 10:54 pm (#4)
- 24th Chef / '14 USA / 12:45 am – 2:45 am (#3)
- 25th Superfast! / '14 USA / 2:08 am – 4:00 am (#3)

Special Programs

March 26 - 30

Japangle / the 26th & the 27th: 9:00 am – 9:40 am; the 28th – 30th: 9:00 am – 9:20 am (#2)

SPORTS

© Baseball ² Broadcasted in Japanese only

3rd Japan x Australia / 6:56 pm – 9:54 pm (#5)

4th Japan x Australia / 7:00 pm – 8:54 pm (#3)

© Football

i The Algarve Cup 2018 (#8)

² Broadcasted in Japanese only

6th Japan x Denmark / 12:25 am – 2:35 am

7th 11:40 pm – 1:50 am

j International Friendship Match: Japan x Republic of Mali (#5)

² Broadcasted in Japanese only

23rd 9:00 pm – 11:20 pm

Please feel free to contact to the International Exchange Lounge at 082-247-9715.

E-Mail: golounge@pcf.city.hiroshima.jp

March 2018

© **Athletics**i **Nagoya Women's Marathon 2018 (#8)**² Broadcasted in Japanese only11th 9:00 am – 11:50 am© **Sumo**i **2018 March Grand Sumo Tournament (#1)**March 11 – 2511th 5:00 pm – 6:00 pm12th 4:30 pm – 6:00 pm13th 4:50 pm – 6:00 pm14th – 16th 4:00 pm – 6:00 pm17th 3:50 pm – 6:00 pm18th 3:05 pm – 6:00 pm19th & 20th 3:08 pm – 6:00 pm21st 3:05 pm – 6:00 pm22nd 3:08 pm – 6:00 pm23rd 4:05 pm – 6:00 pm24th 4:00 pm – 6:00 pm25th 3:05 pm – 6:00 pm© **Figure Skating**i **ISU World Figure Skating Championships****2018 (#8)** ² Broadcasted in Japanese only21st 11:00 pm – 12:59 am22nd 11:00 pm – 12:55 am24th 3:55 am – 6:30 am24th 8:00 pm – 11:10 pm© **PyeongChang Paralympic 2018:**Mar. 9 – 18 ² Broadcasted in Japanese only**T Please check the official website for more information.****Official Website:****<https://www.pyeongchang2018.com/en/paralympics/index>**9th **Opening Ceremony / 7:30 pm – 8:55 pm (#1) & 8:55 pm – 10:00 pm (#2)**10th **Biathlon, Alpine Skiing / 1:05 pm – 4:00 pm (#1)**12th **Snowboard / 1:05 pm – 4:30 pm (#1)**13th **Alpine Skiing / 1:05 pm – 4:50 pm (#1)**14th **Alpine Skiing / 1:05 pm – 4:00 pm (#1)**15th **Alpine Skiing / 1:05 pm – 4:00 pm (#1)**16th **Snowboard / 1:05 pm – 4:00 pm (#1)**17th **Alpine Skiing / 1:05 pm – 3:00 pm (#1)**18th **Alpine Skiing / 1:05 pm – 3:00 pm (#1)****Closing Ceremony / 8:00 pm – 9:30 pm (#2)**

Please feel free to contact to the International Exchange Lounge at 082-247-9715.

E-Mail: golounge@pcf.city.hiroshima.jp

March 2018

Concerts & Plays



Ticket Offices

- j EDION Play Guide (SUNMALL, 1F) (Kamiya-cho, Naka-ku; Tel. 247-5111)
- k YAMAHA Music (Kamiya-cho, Naka-ku; Tel. 244-3779 Closed on the 1st & the 3rd Wednesdays)
- l Hiroshima Yume Plaza (Hondori, Naka-ku; Tel. 544-1122 Closed on Wednesdays)
- m Kawai Hiroshima (2-2-6 Kamiya-cho, Naka-ku; Tel. 243-9291 Closed on Mondays)
- n Fukuya Department Store, Hatchobori (7F) (Ebisu-cho, Naka-ku; Tel. 246-6111)
- o Fukuya Department Store, Hiroshima Station (7F) (Matsubara-cho, Minami-ku; Tel. 568-3111)
- p Alpark Tenmaya (3F) (Inokuchi-myojin, Nishi-ku; Tel. 501-1111)
- q Hiroshima Arts Gakki (Hatchobori, Naka-ku; Tel. 227-6601)

Date / Starting Time (Opening Time) / Venue / Ticket Price / Tickets Go on Sale Date / Ticket Offices /
Inquiries

♪ Event schedules are subject to change.

Please contact the event office before you go. ♪

NEW!!

March

⑥ Hiroshima Symphony Orchestra: The 378th Subscription Concert

(J. Strauss II: *Die Fledermaus*, Overture; Prokofiev: *Cinderella*, Suite No. 1 Op. 107; Ponchielli: *La Gioconda*, *Dance of the Hours*; Ravel: *Bolero*)

3rd Sat. / 3:00 pm (2:00 pm) / Hiroshima Bunka Gakuen HBG Hall / S-¥5,200 A-¥4,700 B-¥4,200 Students-¥1,500 (Student tickets are only sold at the Hiroshima Symphony Orchestra Office.) / Now on sale / j , n o t ^ , Lawson, Ticket PIA, Chugoku Shimbun & Hiroshima Symphony Orchestra Office / Hiroshima Symphony Orchestra Office 082-532-3080 E-mail: info@hirokyo.or.jp

- Conductor: Jesús López-Cobos

⑥ Jesus Christ Superstar [Jerusalem Version] by Gekidan Shiki

• 5th Mon. , 6th Tue. / • the 5th: 7:00 pm , the 6th: 2:00 pm / Ueno Gakuen Hall / S-¥8,640 A-¥6,480 B-¥3,240 / Now on sale / Ticket reservations: Shiki On-line Ticket <http://489444.com> ; Telephone 0120-489444 (10 am – 6 pm) / Gekidan Shiki Hiroshima Office 082-503-3411 (Mon. – Sat. except national holidays)

- Gekidan Shiki (Shiki Theatre Company) is one of the famous theater companies in Japan.

This musical will be played in Japanese.

⑥ Sinske Marimba Concert: Classical Lovers

8th Thurs. / 2:30 pm (2:00 pm) / Nishi Kumin Bunka Center / Adults-¥2,500 Students & Seniors-¥1,500 / Now on sale / • † , e+ / Munique 03-5786-2244 (weekdays, 1 pm – 5 pm)

⑥ The 9th Saxophone Concert by Students of Hiroshima Bunka Gakuen University & Hiroshima University

8th Thurs. / 6:00 pm (5:30 pm) / JMS Aster Plaza / Free admission / 090-8363-7883 (Nakano)

⑥ Cinema Music with Sarah Alainn

10th Sat. / 4:00 pm (3:30 pm) / International Conference Center Hiroshima, Phoenix Hall / S-¥7,000 A-¥6,000 / Now on sale / j † , Lawson, Ticket PIA, e+, Seven-Eleven / HOME Event Center 082-221-7116 (Mon. – Fri., 10 am – 5 pm)

⑥ NHK Symphony Orchestra, Tokyo in Kure

10th Sat. / 4:30 pm – 6:30 pm (3:45 pm) / Kure City Bunka Hall / S-¥6,000 A-¥5,000 B-¥4,000 C-¥3,000 / Now on sale / • ... † , Lawson / NHKSO Concert Hello Dial 050-5542-8600 (8 am – 10 pm); NHK Planet Chugoku Branch 082-244-1125 (Mon. – Fri., 9:30 am – 6:00 pm)

- Conductor: Stefan Blunier / Piano: Ayako Uehara

⑥ The 22nd Hiroshima International Opera Studio Performance: Madama Butterfly (by G. Puccini)

• 10th Sat. , 11th Sun. / • the 10th: 5:30 pm (4:30 pm) Pre-talk show: 5:15 pm; , the 11th: 2:00 pm (1:00 pm) Pre-talk show-1:45 pm / JMS Aster Plaza / **Advance:** Adults-¥6,500 Students (junior high school students and above-¥4,500 Elementary school students-¥2,000; **At the door** Adults-¥7,000 Students (junior high school students and above -¥5,000 Elementary school students-¥2,500 / Now on sale / • , JMS Aster Plaza / Hiroshima International Opera Studio 080-5232-4301 - This will be played in Italian.

Please feel free to contact the International Exchange Lounge at 082-247-9715.

E-mail: golounge@pcf.city.hiroshima.jp

March 2018

☞ Saeki Classical Music Concert: Pictures at an Exhibition

11th Sun. / 2:00 pm (1:30 pm) / Saeki Kumin Bunka Center / Advance: Adults & University students-¥1,000 High school students-¥700; At the door: Adults & University students-¥1,200 High school students-¥800 / Now on sale / • ♪, JMS Aster Plaza, Kumin Bunka Centers, Chugoku Shimibun / Saeki Kumin Bunka Center 082-921-7550 (9 am – 9 pm, closed on Mondays)

– A live painting performance will also be held on the stage.

☞ Choir *Pokkiri*. Concert X

11th Sun. / 3:00 pm (2:30 pm) / Nishi Kumin Bunka Center / Adults & University students-¥1,500 High school students and under-¥1,000 / Please ask the concert organizer for ticket office information. / 080-6326-6544 (Takada)

☞ Claire: Clarinet Solo & Ensemble Concert

12th Mon. / 6:30 pm (6:00 pm) / JMS Aster Plaza / ¥500 / Please ask the concert organizer for ticket office information. / 080-8242-1307 (Shimizu)

☞ Shadow Play & Traditional Japanese Instruments Concert

☞ 17th Sat. • 18th Sun. / • 2:00 pm (1:30 pm) , 5:00 pm (4:30 pm) / Higashi Kumin Bunka Center / Advance-¥1,500 At the door-¥1,800 / Now on sale / Ticket reservations & Inquiries: Higashi Kumin Bunka Center 082-264-5551 (closed on Mondays)

☞ Hiroshima Opera Ensemble: Suor Angelica (by G. Puccini) & Amahl and the Night Visitors (By G. Menotti)

☞ 17th Sat. • 18th Sun. / ☞ 3:30 pm (3:00 pm) • 6:30 pm (6:00 pm) / Hiroshima Baptist Christ Church / ¥2,500 (all non-reserved seats) / Now on sale / • ♪ ♪, Ticket PIA / Hiroshima Opera Ensemble Office 090-3630-1561

– “Suor Angelica” will be played in Italian.

“Amahl and the Night Visitors” will be played in Japanese.

☞ Kawai Salon Concert 2018: Runa Kimura (violin) & Sato Ohara (piano)

18th Sun. / 2:00 pm (1:30 pm) / Kawai Hiroshima Concert Salon “Pace” / ¥1,000 / Ticket reservations & Inquiries: Summer Concert Executive Committee 0829-39-6902 (Kojima); Kawai Hiroshima 082-243-9291 (Aikawa)

☞ Chorale “Elisabeth, ma famille”: The 15th Regular Concert

NEW!

19th Mon. / 6:30 pm (6:00 pm) / Elisabeth University of Music, Cecilia Hall / ¥1,000 (all non-reserved seats) / Please ask the concert organizer for ticket office information. / 082-215-3398 (Shinagawa), 090-3637-3720 (Ueno)

☞ Aki Takahashi Piano Recital

21st Wed. / 2:00 pm (1:30 pm) / Minami Kumin Bunka Center / Adults & University students: Advance-¥3,500 At the door-¥4,000; High school students and under-¥2,000 ² Tickets for the high school students and under will be sold on the concert day only. / Now on sale / • ♪ ..., Minami Kumin Bunka Center / Mimi no Sora 090-7574-3474 E-mail: mnos2015@excite.co.jp

☞ Lotus String Quartet

24th Sat. / 4:00 pm (3:30 pm) / Elisabeth University of Music, Cecilia Hall / ¥3,500 / Now on sale / Ticket PIA / KCM Ticket Service 0570-00-8255 (Mon. – Fri., 10am – 6 pm; Sat., 10 am – 3 pm) HP: <http://www.kojimacm.com>

☞ Hiroshima City Opera 2018

The 10th Performance: Aida (by G. Verdi)

☞ 24th Sat. • 25th Sun. / ☞ the 24th: 5:00 pm (4:00 pm) • the 25th: 2:00 pm (1:00 pm) / JMS Aster Plaza / Reserved seats: SS-¥7,000 S-¥6,000; Non-reserved seats-¥5,000; Students-¥3,500 ² Student tickets will be sold at the door only. / Now on sale / ♪ ♪, JMS Aster Plaza / Hiroshima City Opera Promotion Committee 090-7897-0888

– This will be played in Italian with Japanese subtitles.

☞ Littlewoods Brass Ensemble:

NEW!

The 36th Regular Concert

26th Mon. / 6:30 pm (6:00 pm) / Hiroshima Bunka Gakuen HBG Hall / Adults & University students-¥1,500 High school students and under-¥800 / Now on sale / ♪ ♪ / 082-238-4898 (Kobayashi)

☞ The 6th Chamber Music Concert by Kammermusik Akademie in Kure

NEW!

27th Tue. / 6:30 pm (6:00 pm) / Kure City Bunka Hall / Adults-¥2,500 Students-¥1,000 ² Student ID will be required on the concert day. / Now on sale / • ♪ ♪ / 090-1355-2557 (Shimoda), 090-1251-7635 (Asada)

☞ Takashi Shirao Flute Recital

NEW!

30th Fri. / 6:45 pm (6:15 pm) / Elisabeth University of Music, Xavier Hall / Advance: Adults-¥3,500 Students-¥2,500; At the door: Adults-¥4,000 Students-¥3,000 / Now on sale / • ♪ ♪, Sakurapia / 080-4264-3347 (Kumagai)



Please feel free to contact the International Exchange Lounge at 082-247-9715.

E-mail: golounge@pcf.city.hiroshima.jp

March 2018

April**NEW!!**☎ **Sunao Saka Violin Recital**

8th Sun. / 3:00 pm (2:30 pm) / JMS Aster Plaza /
¥500 (all non-reserved seats) 2 Tickets will not be
sold on the concert day. / Now on sale / • / Sunao
Saka Violin Recital Office 090-7505-0285

☎ **Berlin Komische Oper: Die Zauberflöte
(by W. A. Mozart)**

11th Wed. / 2:00 pm (1:15 pm) • 7:00 pm (6:15
pm) / Hiroshima Bunka Gakuen HBG Hall / S-
¥26,000 A-¥21,000 B-¥17,000 C-¥13,000
D-¥9,000 SS-¥32,000 / Now on sale / • ,
Lawson, Seven-Eleven, FamilyMart, CircleK Sunkus,
Ticket PIA / Kyodo Nishinohon 092-714-0159
(weekdays, 10 am – 7 pm; Sat., 10 am – 5 pm)

☎ **The 2nd Keiko Abe International Junior
Marimba Music Festival in Hiroshima**

15th Sun. / 2:00 pm – 4:00 pm (1:30 pm) /
Hiroshima Kenmin Bunka Center / Advance-
¥2,500 At the door-¥2,900 (all non-reserved seats)
/ Now on sale / • , Hatsukaichi Bunka Hall
Sakurapia, Hiroshima Kenmin Bunka Center / 080-
1903-6067 (Inoue) Performers: Benjamin Hellert
(USA), Steije Maurer (Netherlands) & Hiroshima Junior
Marimba Ensemble (Japan)

☎ **Hiroshima Symphony Orchestra:
The 379th Subscription Concert****NEW!!**

(Mozart: *Piano Concerto No. 12 in A major, K. 414*
(385p); Bruckner: *Symphony No. 6 in A major (First*
Edition))

15th Sun. / 3:00 pm (2:00 pm) / Hiroshima Bunka
Gakuen HBG Hall / S-¥5,200 A-¥4,700 B-
¥4,200 Students-¥1,500 (Student tickets are only
sold at the Hiroshima Symphony Orchestra Office.) /
Now on sale / j , n o t ^ , Lawson, Ticket PIA,
Chugoku Shimbun & Hiroshima Symphony
Orchestra Office / Hiroshima Symphony Orchestra
Office 082-532-3080 E-mail: info@hirokyo.or.jp

Conductor: Tatsuya Shimono
Piano: André Laplante

☎ **"Mezamashi Classics" in Kure**

15th Sun. / 3:00 pm (2:30 pm) / Kure City Bunka
Hall / S-¥5,500 A-¥4,500 / Now on sale /
Lawson, Ticket PIA, e+, Seven-Eleven, • † / TSS
Event Office 082-253-1010 (weekdays, 10 am – 6
pm); Kure City Bunka Hall 0823-25-7878

☎ **Chor Blume: The 11th Concert****NEW!!**

28th Sat. / 2:00 pm (1:30 pm) / Hiroshima Kenmin
Bunka Center / ¥900 / Please ask the concert
organizer for ticket office information. / 090-4140-
3569 (Yamanoue)

Please feel free to contact the International Exchange Lounge at 082-247-9715.

E-mail: golounge@pcf.city.hiroshima.jp

March 2018

May**NEW!!**☎ **LA LA LAND in Concert Hiroshima**

1st Tue. / 7:00 pm (6:15 pm) / Hiroshima Bunka
Gakuen HBG Hall / S-¥9,800 A-¥7,800 / From
Sat., Mar. 10 / Ticket PIA, Lawson, e+ / HOME
Event Center 082-221-7116 (weekdays, 10 am – 5
pm)

☎ **Mandolin Ensemble Regina:
The 8th Concert****NEW!!**

4th Fri. / 1:30 pm (1:00 pm) / Higashi Kumin Bunka
Center / Free admission / 090-3174-4305 (Yasui)

☎ **Special Concert 2018 in Hiroshima****NEW!!**

4th Fri. / 6:30 pm (6:00 pm) / Elisabeth University
of Music, Cecilia Hall / Adults-¥2,000 Students-
¥800 / Please ask the concert organizer for ticket
office information. / 082-287-0380 (Takemoto)

☎ **Ancoro Mochi: The 1st Concert****NEW!!**

6th Sun. / 2:00 pm (1:30 pm) / Nishi Kumin Bunka
Center / Free admission / 082-548-0722
(Matsushita)

☎ **Hiroshima Symphony Orchestra:
Bouquet of Music HSO Masterpiece Concert
~ Spring ~****NEW!!**

(Richard Strauss: *Horn Concerto No. 1 in E-flat major,*
*Op. 11, TrV117; Smetana: *Ma vlast, ~Vlasta;**
Tchaikovsky: Symphony No. 5 in E minor, Op. 64
12th Sat. / 3:00 pm (2:00 pm) / International
Conference Center Hiroshima, Phoenix Hall / S-
¥4,200 Pair tickets (S seats)-¥6,400 A-¥3,200
B-¥2,200 Students-¥1,500 (Student tickets are only
sold at the Hiroshima Symphony Orchestra Office.) /
Now on sale / j , n o t ^ , Lawson, Ticket PIA,
Chugoku Shimbun & Hiroshima Symphony
Orchestra Office / Hiroshima Symphony Orchestra
Office 082-532-3080 E-mail: info@hirokyo.or.jp
Conductor: Masaru Kumakura
Horn: Alessio Allegrini

☎ **Kalani Pe'a Hawaiian Concert****NEW!!**

12th Sat. / 4:30 pm (4:00 pm) / Hatsukaichi Bunka
Hall Sakurapia / High school students and up-
¥5,000 Junior high school students and under-
¥2,500 / From Sat., March 10 / • , Ticket PIA,
Lawson, Sakurapia / Hatsukaichi Bunka Hall
Sakurapia 0829-20-0111

☎ **Charles Richard-Hamelin Piano Recital:
All Chopin Program**

13th Sun. / 2:00 pm (1:30 pm) / Hatsukaichi Bunka
Hall Sakurapia / ¥4,500 / Now on sale / • † ,
Sakurapia, Lawson, Ticket PIA / Hatsukaichi Bunka

Hall Sakurapia 0829-20-0111 (9 am – 7 pm, closed on Mondays); HOME Event Center 082-221-7116 (weekdays, 10 am – 5 pm)

€ Flute Quartet Bacc-Quar Concert Vol. 8

NEW!!

15th Tue. / 6:45 pm (6:15 pm) / Higashi Kumin Bunka Center / Advance: Adults & University students-¥2,000 High school students and under-¥1,000; At the door: Adults & University students-¥2,500 High school students and under-¥1,500 / Please ask the concert organizer for ticket office information. / 090-9464-3840 (Neishi)

NEW!!

€ God Save the Queen Japan Tour Hiroshima

18th Fri. / 7:00 pm (6:15 pm) / Hiroshima Club Quattro / ¥6,600 / From Sat., Mar. 24 / • †, Ticket PIA, Lawson, Seven-Eleven, e+ / HOME Event Center 082-221-7116 (weekdays, 10 am – 5 pm)

€ Hiroshima Happy New Ear 25: Music as Witchcraft

NEW!!

18th Fri. / 7:00 pm (6:30 pm) / JMS Aster Plaza / Advance: Adults-¥2,500 Students-¥1,500; At the door: Adults-¥3,000 Students-¥2,000 / Now on sale / • †, Ticket PIA, Lawson, Chugoku Shimbun, JMS Aster Plaza / Hiroshima Opera and Music Promotion Committee 082-244-8000

€ Hiroshima Symphony Orchestra: The 380th Subscription Concert

NEW!!

(Leonard Bernstein's 100th Anniversary
Bernstein: *Candide, Overture; Bernstein: Serenade for Solo Violin, Strings, Harp and Percussion; Bernstein: Symphony No. 2 "The Age of Anxiety"*)

25th Fri. / 6:45 pm (5:45 pm) / Hiroshima Bunka Gakuen HBG Hall / S-¥5,200 A-¥4,700 B-¥4,200 Students-¥1,500 (Student tickets are only sold at the Hiroshima Symphony Orchestra Office.) / From Sun., March 25 (from Mon., March 26 at the Hiroshima Symphony Orchestra Office) / j , n o ± ^ , Lawson, Ticket PIA, Chugoku Shimbun & Hiroshima Symphony Orchestra Office / Hiroshima Symphony Orchestra Office 082-532-3080 E-mail: info@hirokkyo.or.jp

- Conductor: Kazuyoshi Akiyama
Violin: Soichi Sakuma / Piano: Sara Davis Buechner

€ KONISHIKI Hawaiian Concert

NEW!!

26th Sat. / ☐ 2:00 pm (1:30 pm) • 6:00 pm (5:30 pm) / Hiroshima Kenmin Bunka Center / ¥3,800 (all non-reserved seats) / Now on sale / • †, Ticket PIA / Green Concert Hiroshima 082-241-8868

€ Live Green 2018

NEW!!

27th Sun. / 1:00 pm – 5:00 pm (noon) / Honganji Temple Hiroshima Betsuin / Advance-¥3,000 At the door-¥3,500 (all non-reserved seats) ² Free

admission for one child (elementary school student and under) with his/her guardian (¥500 for each extra child) / From Sat., March 3 / Ticket PIA, Seven-Eleven, Lawson, • † / RCC 082-222-1133 (weekdays, 10 am – 5 pm)

- Live Act: Kazumi Nikaido and others

This is a music event held at a temple. A talk show, workshops, cafés & a marché (food market) will also be held. This is a rain-or-shine event.

€ Dansu 2018

31st Thurs. / 7:00 pm (6:30 pm) / JMS Aster Plaza / ¥6,000 / Now on sale / Lawson, Ticket PIA, e+, Seven-Eleven, • , JMS Aster Plaza / TSS Office 082-253-1010 (weekdays, 10 am – 6 pm)

- Contemporary dance performance

June

€ Hiroshima Symphony Orchestra: The 381st Subscription Concert

NEW!!

(Zandonai: *Il flauto notturno, for Flute and Orchestra; Mozart: Flute Concerto No. 1 in G major, K. 313 (285c); Tchaikovsky: Symphony No. 4 in F major, op. 36)*

8th Fri. / 6:45 pm (5:45 pm) / Hiroshima Bunka Gakuen HBG Hall / S-¥5,200 A-¥4,700 B-¥4,200 Students-¥1,500 (Student tickets are only sold at the Hiroshima Symphony Orchestra Office.) / From Sun., April 8 (from Mon., April 9 at the Hiroshima Symphony Orchestra Office) / j , n o ± ^ , Lawson, Ticket PIA, Chugoku Shimbun & Hiroshima Symphony Orchestra Office / Hiroshima Symphony Orchestra Office 082-532-3080 E-mail: info@hirokkyo.or.jp

- Conductor: Kah Chun Wong
Flute: Karl-Heinz Schütz

NEW!!

€ Hiroshima Symphony Orchestra, Discovery Series: Schubert Symphonien Zyklus vol. 2

(Suppé: *Dichter und Bauer, Ouverture; Schönberg: Theme and Variations, op. 43b; Schubert (arr. Webern): Deutsche Tänze, D820; Schubert: Symphonie Nr. B-dur, D485)*

29th Fri. / 6:45 pm (5:45 pm) / JMS Aster Plaza / S-¥5,200 A-¥4,200 B-¥3,200 Students-¥1,000 (Student tickets are only sold at the Hiroshima Symphony Orchestra Office.) / From Sun., April 29 (from Tue., May 1 at the Hiroshima Symphony Orchestra Office) / j , n o ± ^ , Lawson, Ticket PIA, Chugoku Shimbun, JMS Aster Plaza & Hiroshima Symphony Orchestra Office / Hiroshima Symphony Orchestra Office 082-532-3080 E-mail: info@hirokkyo.or.jp

- Conductor: Tatsuya Shimono

Please feel free to contact the International Exchange Lounge at 082-247-9715.

E-mail: golounge@pcf.city.hiroshima.jp

March 2018

July€ **MACHINE HEAD:****Catharsis Japan Tour 2018**

5th Thurs. / 7:00 pm (6:00 pm) / Hiroshima Club Quattro / ¥8,000 / From Sat., March 3 / Hiroshima Club Quattro, e+, Ticket PIA, Lawson, •, Tower Records Hiroshima / Hiroshima Club Quattro 082-542-2280

€ **Prague Radio Symphony Orchestra & Dai Miyata (cello)**

6th Fri. / 6:45 pm (6:15 pm) / Ueno Gakuen Hall / SS-¥12,000 S-¥10,000 A-¥8,000 B-¥6,000 / Now on sale / • † / Green Concert Hiroshima 082-241-8868

€ **Hiroshima Symphony Orchestra: The 382nd Subscription Concert**

(Toshio Hosokawa: *Meditation – to the victims of Tsunami 3.11 –*; Messiaen: *le Tombeau resplendissant*; Stravinsky: *L'Oiseau de feu (1910 Edition)*)

7th Sat. / 3:00 pm (2:00 pm) / Hiroshima Bunka Gakuen HBG Hall / S-¥5,200 A-¥4,700 B-¥4,200 Students-¥1,500 (Student tickets are only sold at the Hiroshima Symphony Orchestra Office.) / From Mon., May 7 / j , n o t ^ , Lawson, Ticket PIA, Chugoku Shimbun & Hiroshima Symphony Orchestra Office / Hiroshima Symphony Orchestra Office 082-532-3080 E-mail: info@hirokyo.or.jp
- Conductor: Jun Märkl

€ **Hiroshima Symphony Orchestra, Discovery Series: Schubert Symphonien Zyklus vol. 2**

(Suppé: *Boccaccio, Overture*; Berg: *Sieben frühe Lieder*; Schubert: *Symphony Nr. 6 C-dur, D589*)

27th Fri. / 6:45 pm (5:45 pm) / JMS Aster Plaza / S-¥5,200 A-¥4,200 B-¥3,200 Students-¥1,000 (Student tickets are only sold at the Hiroshima Symphony Orchestra Office.) / From Sun., May 27 (from Mon., May 28 at the Hiroshima Symphony Orchestra Office) / j , n o t ^ , Lawson, Ticket PIA, Chugoku Shimbun, JMS Aster Plaza & Hiroshima Symphony Orchestra Office / Hiroshima Symphony Orchestra Office 082-532-3080 E-mail: info@hirokyo.or.jp
- Conductor: Tatsuya Shimono

Soprano: Miwako Handa

€ **Osaka Shion Wind Orchestra:****Dragon Quest Concert in Hiroshima**

28th Sat. / 5:00 pm (4:00 pm) / Hiroshima Bunka Gakuen HBG Hall / S-¥5,000 A-¥4,000 / From Sat., Mar. 3 / • †, Ticket PIA, Lawson, Seven-Eleven, e+ / HOME Event Center 082-221-7116 (weekdays, 10 am – 5 pm)

- “Dragon Quest” is a famous PRG series in Japan. Its music is also famous.

August**NEW!**€ **Hiroshima Symphony Orchestra:****An Evening of Peace Concert**

(Brahms: *Symphony No. 3 in F major, op. 90*; Brahms: *Concerto No. 2 in B-flat major, op. 83*)

5th Sun. / 3:00 pm (2:00 pm) / Hiroshima Bunka Gakuen HBG Hall / S-¥5,000 A-¥4,000 Students-¥2,000 (Student tickets are only sold at the Hiroshima Symphony Orchestra Office.) / From Tue., Jun. 5 / j , n o t ^ , Lawson, Ticket PIA, Chugoku Shimbun & Hiroshima Symphony Orchestra Office / Hiroshima Symphony Orchestra Office 082-532-3080 E-mail: info@hirokyo.or.jp
- Conductor: Kazuyoshi Akiyama
Piano: Nelson Freire

€ **KAGURA for Peace 2018 in Hiroshima: Hiroshima – Kagura and <OROCHI for Kagura and Orchestra> Repose of Souls and Resurgence**

18th Sat. • 19th Sun. / 6:00 pm (5:30 pm)
• 1:30 pm (1:00 pm) / JMS Aster Plaza / Now on sale / • f ... † ‡ , JMS Aster Plaza, Hatsukaichi Bunka Hall Sakurapia / Hiroshima Bijutsu Kenkyusho 082-506-3060

TICKET PRICES: 2 All non-reserved seats

w Ticket for Aug. 18 w

Advance: Adults-¥3,000 Students-¥2,000
Elementary school students-¥1,000
Pair tickets-¥5,000

At the door: Adults-¥3,500 Students-¥2,500
Elementary school students-¥1,500
Pair tickets-¥5,500

w Ticket for Aug. 19 w

Advance: Adults-¥4,000 Students-¥3,000
Elementary school students-¥1,000
Pair tickets-¥7,000

At the door: Adults-¥4,500 Students-¥3,500
Elementary school students-¥1,500
Pair tickets-¥7,500

w 2-day Tickets: ¥6,000



Please feel free to contact the International Exchange Lounge at 082-247-9715.

E-mail: golounge@pcf.city.hiroshima.jp

March 2018

Event Halls

® **Hiroshima Bunka Gakuen HBG Hall 広島文化学園 HBG ホール**

(3-3 Kako-machi, Naka-ku, Hiroshima Tel. 082-243-8881)

† Take the No.24 bus bound for Yoshijima Eigyocho (吉島営業所) and get off at Kako-machi (加古町).
Walking time to destination: 2 minutes

® **Hiroshima Kenmin Bunka Center 広島県民文化センター**

(1-5-3 Ote-machi, Naka-ku, Hiroshima Tel. 082-245-2311)

† Take a streetcar or a bus and get off at Hondori (本通) or Kamiya-cho (紙屋町). Walking time to destination is 5 minutes.

® **JMS Aster Plaza JMS アステールプラザ**

(4-17 Kako-machi, Naka-ku, Hiroshima Tel. 082-244-8000)

† Take the No.24 bus bound for Yoshijima Eigyocho (吉島営業所) and get off at Kako-machi (加古町).
Walking time to destination is 2 minutes.

® **Ueno Gakuen Hall 上野学園ホール**

(19-1 Hakushima-kita-machi, Naka-ku, Hiroshima Tel. 082-223-6367)

† Take the Astramline bound for Koiki Koen-mae (広域公園前) or Chorakuji (長楽寺) Station and get off at Hakushima (白島) Station. Walking time to destination is 3 minutes.

® **Hiroshima Kokusai Kaigijou (International Conference Center Hiroshima), Phoenix Hall 広島国際会議場フェニックスホール**

(1-5 Nakajima-cho, Naka-ku, Hiroshima Tel. 082-242-7777)

† Get on a Hiroshima Bus bound for Yoshijima and get off at Heiwa Kinenkoen (平和記念公園).
† From Chuden-mae (中電前) or Genbaku Dome-mae (原爆ドーム前) Streetcar Stop, walking time to destination is 5 minutes.

® **Hiroshima Club Quattro 広島クラブクアトロ**

(10-1 Hondori, Naka-ku, Hiroshima (Hiroshima PARCO Hon-kan 10F) Tel. 082-542-2280)

† From Hatchobori (八丁堀) Streetcar Stop, walking time to destination is 5 minutes.

® **Hiroshima Green Arena 広島グリーンアリーナ**

(4-1 Moto-machi, Naka-ku, Hiroshima Tel. 082-228-1111)

† From Kamiya-cho-nishi (紙屋町西) or Kamiya-cho-higashi (紙屋町東) Streetcar Stop, walking time to destination is 5 minutes.

® **Hiroshima Sun Plaza 広島サンプラザ**

(3-1-1 Shoko Center, Nishi-ku, Hiroshima Tel. 082-278-5000)

† Take a train or streetcar to Miyajima and get off at JR Shin-inokuchi (新井口) Station (JR Sanyo Line) or Shoko Center-iriguchi (商工センター入り口) Streetcar Stops (Hiroden Miyajima Line). Walking time to destination is 5 minutes.

® **Elisabeth University of Music エリザベト音楽大学**

(4-15 Nobori-machi, Naka-ku, Hiroshima Tel. 082-221-0918)

† From Kanayama-cho (銀山町) or Jogakuin-mae (女学院前) Streetcar Stop, walking time to destination is 10 minutes.

® **Higashi Kumin Bunka Center 東区民文化センター**

(10-31 Higashi-kaniya-cho, Higashi-ku, Hiroshima Tel. 082-264-5551)

† From the Shinkansen Exit of the JR Hiroshima (広島) Station, walking time to destination is 10 minutes.

Please feel free to contact the International Exchange Lounge at 082-247-9715.

E-mail: golounge@pcf.city.hiroshima.jp

March 2018

® **Nishi Kumin Bunka Center 西区民文化センター**

(6-1 Yokogawa Shin-machi, Nishi-ku, Hiroshima Tel. 082-234-1960)

† From JR Yokogawa (横川) Station, walking time to destination is 5 minutes.

® **Asaminami Kumin Bunka Center 安佐南区民文化センター**

(22-17 Nakasuji 1-chome, Asaminami-ku, Hiroshima Tel. 082-879-3060)

† From *Astramline* Nakasuji (中筋) Station, walking time to destination is 5 minutes.

® **Saeki Kumin Bunka Center 佐伯区民文化センター**

(6-1-10 Itsukaichi-chuo, Saeki-ku, Hiroshima Tel. 082-921-7550)

† From Hiroshima Bus Center (*Sogo* Hiroshima, 3F), take a bus to Yakushigaoka-danchi (薬師が丘団地), Shikigaoka-danchi (四季が丘団地), Higashi-kannon-dai-danchi (東観音台団地) or Ajinadai-kita (阿品台北) and get off at Saeki-kumin Bunka Center-mae (佐伯区民文化センター前). Walking time to destination is 1 minute.

® **Aki Kumin Bunka Center 安芸区民文化センター**

(2-16 Funakoshi-minami 3-chome, Aki-ku, Hiroshima Tel. 082-824-1330)

† From JR Kaitaichi (海田市) Station (JR Sanyo Line), walking time to destination is 5 minutes.

® **Blue Live Hiroshima ブルーライブ広島**

(3-12-69 Ujina Kaigan, Minami-ku, Hiroshima Tel. 082-250-5522)

† Take a streetcar for Hiroshima-ko (No. 1, 3 or 5) and get off at Kaigan-dori (海岸通). Walking time to destination is 5 minutes.

® **PARTE エンジェルパルテ**

(7-25 Fukuromachi, Naka-ku, Hiroshima Tel. 082-247-5588)

† From Hondori (本通) or Tatemachi (立町) Streetcar Stop, walking time to destination is 10 minutes

® **Hiroshima City Seishonen Center 広島市青少年センター**

(5-61 Motomachi, Naka-ku, Hiroshima Tel. 082-228-0447)

† From Genbaku Dome-mae (原爆ドーム前) Streetcar Stop, walking time to destination is 3 minutes.

® **Kawai Hiroshima Concert Salon "Pace" カワイ広島コンサートサロン "パーチェ"**

(2-2-6 Kamiya-cho, Naka-ku, Hiroshima Tel. 082-243-9291)

† From Hondori (本通) Streetcar Stop, walking time to destination is 2 minutes.

® **Japan Evangelical Lutheran Church of Hiroshima ルーテル広島教会**

(2-12 Tsurumi-cho, Naka-ku, Hiroshima Tel. 082-241-3695)

† From Hijiyama-shita (比治山下) Streetcar Stop, walking time to destination is 3 minutes.

® **Jodoshinshu Honganji-ha Hiroshima Betsuin 浄土真宗本願寺派広島別院**

(1-19 Tera-machi, Naka-ku, Hiroshima Tel. 082-231-0302)

† Get off at Betsuin-mae (別院前) Streetcar Stop.

® **Hatsukaichi Bunka Hall Sakurapia はつかいち文化ホールさくらぴあ**

(1-11-1 Shimo-hera, Hatsukaichi City Tel. 0829-20-0111)

† Take a train on the JR Sanyo Line bound for Iwakuni and get off at JR Miyauchi Kushido (宮内串戸) Station. Walking time to destination is 15 minutes.

† Take a streetcar on the Hiroden Miyajima Line and get off at Hatsukaichi Shiyakusho-mae (廿日市役所前). Walking time to destination is 8 minutes.

® **Kure City Bunka Hall 呉市文化ホール**

(3-10-1 Chuo, Kure City Tel. 0823-25-7878)

† From JR Kure (呉) Station (JR Kure Line), walking time to destination is 7 minutes.



Please feel free to contact the International Exchange Lounge at 082-247-9715.

E-mail: golounge@pcf.city.hiroshima.jp

March 2018



Museums



A: Adults U: University Students H: High School Students
J: Junior High School Students E: Elementary School Students
S: Seniors (65 years old and above - Identification showing your date of birth is required.)

² Generally, admission is allowed up to 30 min. prior to closing. ²

Hiroshima Museum of Art

Address: 3-2 Moto-machi, Naka-ku, Hiroshima City
 Tel: 082-223-2530
 Hours: 9:00 am – 5:00 pm
 Closed: Mondays (except during special exhibitions)
 URL: <http://www.hiroshima-museum.jp>

Special Exhibition

| **Mucha: Alfons Mucha's Women**

Period: Sat., Feb. 24 – Sun., Apr. 8

Admission Fee:

A -¥1,300 (¥1,100), S-¥1,100,
U&H-¥1,000 (¥800), J&E-¥600 (¥400)

² Advance ticket prices shown in ().

Collection Exhibition

| **Modern European Paintings**

Period: Year-round

Hiroshima City Museum of Contemporary Art

Address: 1-1 Hijiyama Koen, Minami-ku, Hiroshima City
 Tel: 082-264-1121
 Hours: 10:00 am – 5:00 pm
 Closed: Mondays (except national holiday)
 URL: <http://www.hcmca.cf.city.hiroshima.jp/>

Special Exhibition

| **NOBUYA ABE**

1913-1971: Insatiable Quest beyond Borders

Period: Fri., Mar. 23 – Sun., May 20

Admission Fee: A-¥1,030 (¥820), U-¥720 (¥620), S&H-¥510 (¥410), J & under-Free

² Advance ticket prices shown in ().

Collection Exhibition

Admission Fee: A-¥360 / U-¥270 / S&H-¥170 / J & under- Free

Holders of special exhibition admission tickets are also entitled to view the collection exhibition.

| **2018 – 1: Collection Highlights & Special Feature: "Women's March"**

Period: Sat., Feb. 24 – Sun., Jun. 17

Video Art Program (Free admission)

| **A Window to the World [The 59th Program]:**

Erin Coates

Period: Tue., Jan. 16 – Sat., Mar. 31

Hiroshima MOCA Monthly Workshop

\$ This is an art program in which the museum selects one particular material and visitors are free to make anything with it.

Reservations are not required. You can join the workshop on the event day.

Date: Mar. 18

Time: j 10:00 am – noon

k 2:00 pm – 4:00 pm

Participation Fee: Free

Hiroshima Prefectural Art Museum

Address: 2-22 Kaminobori-cho, Naka-ku,
 Hiroshima City

Tel: 082-221-6246

Hours: 9:00 am – 5:00 pm

² Open until 8:00 pm on Fridays (Apr. – Oct.)

² Open until 7:00 pm on Fridays (Nov. – Mar.)

Closed: March 12, 19 & 26

URL: <http://www.hpam.jp/>

Special Exhibitions

| **The 64th Japan Traditional Kôgei (Art Crafts) Exhibition**

Period: Fri., Feb. 23 – Sun., Mar. 11

Admission Fee: A-¥700, U&H-¥400, J & under-Free

| **La Parisienne: Portraying Women in the Capital of Culture, 1715-1965 from the Museum of Fine Arts, Boston**

Period: Wed., Apr. 11 – Sun., Jun. 10

Admission Fee:

A-¥1,400 (¥1,200), U&H-¥900 (¥700), J&E-¥600 (¥400)

² Advance ticket prices shown in ()

Please feel free to contact the International Exchange Lounge at 082-247-9715.

E-mail: golounge@pcf.city.hiroshima.jp

March 2018

Collection Exhibition

Admission Fee (all exhibitions):

A-¥510, U-¥310, H & under-Free

Holders of special exhibition admission tickets are also entitled to view the Museum's Collection exhibits.

| Shisui Rakkaku Collection: Hiroshima's Lacquerware Pioneer ~ New Collection Artworks, Donated in 2016 ~

Period: Tue., Jan. 2 – Sun., Apr. 15

Kure Municipal Museum of Art

Address: Irifuneyama Koen, Saiwai-cho, Kure City
Tel: 0823-25-2007

Hours: 10:00 am – 5:00 pm

Closed: Tuesdays (except national holidays)

URL: <http://kure-bi.jp/>

Special Exhibition**| Hiroshige Utagawa**

Period: Sat., Apr. 7 – Sun., May 20

Admission Fee:

A-¥1,000 (¥800), U&H-¥600 (¥500),

J&E-¥400 (¥300)

² Advance ticket prices shown in ().

Collection Exhibition**| Life**

Period: Fri., Feb. 23 – Mon., Mar. 26

Admission Fee: A&U-¥300, H-¥180,
J&E-¥120

Fukuyama Museum of Art

Address: 2-4-3 Nishi-machi, Fukuyama City
Tel: 084-932-2345

Hours: 9:30 am – 5:00 pm

Closed: Mondays (except national holidays)

HP: <http://www.city.fukuyama.hiroshima.jp/site/fukuyama-museum/>

Collection Exhibition

Admission Fee: A&U-¥300, H & under-Free

| Winter Exhibition:

Keisuke Ibuse & Kansai Yamane

Period: Until Sun., Apr. 1

Onomichi City Museum of Art

Address: 17-19 Nishitsuchido-cho, Onomichi City
(Inside Senkoji Park)

Tel: 0848-23-2281

Hours: 9:00 am – 5:00 pm

Closed: Mondays except national holidays

URL: <http://www7.city.onomichi.hiroshima.jp/>

Special Exhibition**| Ukiyoe: Cats**

Period: Sat., Mar. 17 – Sun., May 6

Admission Fee: Free admission

Okuda Genso Sayume Art Museum

Address: 453-6 Higashi Sakeya-machi, Miyoshi City
Tel: 0824-65-0010

Hours: 9:30 am – 5:00 pm

² Open until 9:00 pm on Mar. 2 & 31

Closed: March 14 & April 11

URL: <http://www.genso-sayume.jp>

Special Exhibition**| Gyokuun Hirata**

Period: Thurs., Mar. 1 – Sun., Apr. 15

Admission Fee:

A-¥1,000 (¥900), Tickets for couple-

¥1,800 U&H-¥500 (¥400), J & under-Free

² Advance ticket prices shown in ().

Rai Sanyo Historic Site Museum

Address: 5-15 Fukuromachi, Naka-ku, Hiroshima City

Tel: 082-298-5051

Hours: 9:30 am – 5:00 pm

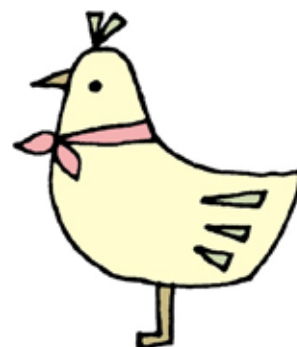
Closed: Mondays

Special Exhibition**| Traditional Hina Dolls on Display**

Period: Thurs., Feb. 1 – Sun., Mar. 11

Admission Fee: A-¥300

J Tea ceremony will be held from 10 am to 3 pm on March 4. Fee for the tea ceremony will be 500 yen.



Please feel free to contact the International Exchange Lounge at 082-247-9715.

E-mail: golounge@pcf.city.hiroshima.jp

March 2018

Hiroshima Toyo Carp Schedule 2018

The Toyo Carp (Hiroshima's professional baseball team) plays about 60 games at the MAZDA Zoom-Zoom Stadium Hiroshima every year.

GAME SCHEDULE

: Exhibition Games : Opening Day for the Regular Season : Interleague Play

MARCH

Sat., 10th, 1:00 pm / vs. Tokyo Yakult Swallows
 Tue., 13th, 1:00 pm / vs. Hokkaido
 Nippon-Ham Fighters
 Wed., 14th, 1:00 pm / vs. Hokkaido
 Nippon-Ham Fighters
 Wed., 21st, 2:00 pm / vs. Orix Buffaloes
 Sun., 25th, 2:00 pm / vs. Fukuoka SoftBank Hawks
Opening Day for the Regular Season
Fri., 30th, 6:00 pm / vs. Chunichi Dragons
 Sat., 31st, 2:00 pm / vs. Chunichi Dragons

APRIL

Sun., 1st, 1:30 pm / vs. Chunichi Dragons
 Fri., 6th, 6:00 pm / vs. Yokohama DeNA Baystars
 Sat., 7th, 2:00 pm / vs. Yokohama DeNA Baystars
 Sun., 8th, 1:30 pm / vs. Yokohama DeNA Baystars
 Wed., 18th, 6:00 pm / vs. Tokyo Yakult Swallows
 Thurs., 19th, 6:00 pm / vs. Tokyo Yakult Swallows
 Sat., 28th, 1:30 pm / vs. Hanshin Tigers
 Sun., 29th, 1:30 pm / vs. Hanshin Tigers
 Mon., 30th, 1:30 pm / vs. Hanshin Tigers

MAY

Tue., 1st, 6:00 pm / vs. Yomiuri Giants
 Wed., 2nd, 6:00 pm / vs. Yomiuri Giants
 Thurs., 3rd, 1:30 pm / vs. Yomiuri Giants
 Tue., 8th, 6:00 pm / vs. Yokohama DeNA Baystars
 Wed., 9th, 6:00 pm / vs. Yokohama DeNA Baystars
 Fri., 11th, 6:00 pm / vs. Hanshin Tigers
 Sat., 12th, 2:00 pm / vs. Hanshin Tigers
 Sun., 13th, 1:30 pm / vs. Hanshin Tigers
 Fri., 18th, 6:00 pm / vs. Tokyo Yakult Swallows
 Sat., 19th, 2:00 pm / vs. Tokyo Yakult Swallows
 Sun., 20th, 1:30 pm / vs. Tokyo Yakult Swallows
 Fri., 25th, 6:00 pm / vs. Chunichi Dragons
 Sat., 26th, 2:00 pm / vs. Chunichi Dragons
 Sun., 27th, 1:30 pm / vs. Chunichi Dragons
 Wed., 30th, 6:00 pm / vs. Saitama Seibu Lions
 Thurs., 31st, 6:00 pm / vs. Saitama Seibu Lions

JUNE

Tue., 5th, 6:00 pm / vs. Hokkaido
 Nippon-Ham Fighters
 Wed., 6th, 6:00 pm / vs. Hokkaido
 Nippon-Ham Fighters
 Thurs., 7th, 6:00 pm / vs. Hokkaido
 Nippon-Ham Fighters
 Fri., 8th, 6:00 pm / vs. Tohoku Rakuten
 Golden Eagles
 Sat., 9th, 2:00 pm / vs. Tohoku Rakuten
 Golden Eagles
 Sun., 10th, 1:30 pm / vs. Tohoku Rakuten
 Golden Eagles
 Tue., 26th, 6:00 pm / vs. Yomiuri Giants
 Wed., 27th, 6:00 pm / vs. Yomiuri Giants
 Thurs., 28th, 6:00 pm / vs. Yomiuri Giants

TICKET OFFICES

w MAZDA Zoom-Zoom Stadium Hiroshima

Tickets can be purchased at the ticket booths at the entrances of the stadium (closed on August 6).

Booth Opening Times

11:30am (days with night games) / 11:00am (days with day games)

11:00am – 4:00pm (days when there are no games)

w CARPIO (6-7 Hatcho-bori, Naka-ku)

OPEN: 10:00am – 4:00pm

CLOSED: No fixed times

TEL: 227-2222

w Convenience Stores

Tickets are available at convenience stores such as Lawson, Seven-Eleven, FamilyMart and Sunkus.



ACCESS

MAZDA Zoom-Zoom Stadium Hiroshima:

From JR Hiroshima Station, walking time to the stadium is 10 minutes.

INQUIRIES

Hiroshima Toyo CARP

Tel. (082) 223-2141 Fax. (082) 502-1189

URL: www.carp.co.jp/

Please feel free to contact the International Exchange Lounge at 082-247-9715.

E-mail: golounge@pcf.city.hiroshima.jp

March 2018

Sanfrecce Hiroshima FC Schedule 2018

GAME SCHEDULE Date / Kick Off / Game / Venue / Ticket Sales

2018 J League

Sun., March 18 / 4:00 pm / vs. Y Júbilo Iwata / EDION Stadium Hiroshima / Now on sale
 Wed., April 11 / 7:00 pm / vs. Yokohama F. Marinos / EDION Stadium Hiroshima / From Sat., March 3
 Sat., April 21 / 2:00 pm / vs. Sagantosu / EDION Stadium Hiroshima / From Sat., March 3
 Wed., May 2 / 7:30 pm / vs. Shimizu S-Pulse / EDION Stadium Hiroshima / From Sat., April 7
 Sun., May 6 / 5:00 pm / vs. Vissel Kobe / EDION Stadium Hiroshima / From Sat., April 7
 Sun., May 20 / 4:00 pm / vs. Cerezo Osaka / EDION Stadium Hiroshima / From Sat., April 7
 Wed., July 18 / 7:00 pm / vs. Gamba Osaka / EDION Stadium Hiroshima / From Sat., June 2
 Sat., July 28 / 7:00 pm / vs. Urawa Red Diamonds / EDION Stadium Hiroshima / From Sat., June 2
 Sun., August 5 / 7:00 pm / vs. Shonan Bellemare / EDION Stadium Hiroshima / From Sat., July 7
 Sat., August 11 / 7:00 pm / vs. V-Varen Nagasaki / EDION Stadium Hiroshima / From Sat., July 7
 Sun., August 19 / 7:00 pm / vs. Kawasaki Frontale / EDION Stadium Hiroshima / From Sat., July 7
 Sat., September 1 or Sun., September 2 / Not finalized / vs. Kashima Antlers / EDION Stadium Hiroshima / From Sat., August 4
 Sat., September 22 or Sun., September 23 / Not finalized / vs. F. C. Tokyo / EDION Stadium Hiroshima / From Sat., August 4
 Sat., October 6 or Sun., October 7 / Not finalized / vs. Kashiwa Reysol / EDION Stadium Hiroshima / From Sat., September 1
 Sat., November 10 / Not finalized / vs. Vegalta Sendai / EDION Stadium Hiroshima / From Sat., October 6
 Sat., November 24 / Not finalized / vs. Nagoya Grampus / EDION Stadium Hiroshima / From Sat., October 6

2018 J League YBC Levain Cup Group Stage

Wed., March 14 / 7:30 pm / vs. Nagoya Grampus / EDION Stadium Hiroshima / Now on sale
 Wed., April 4 / 7:00 pm / vs. Urawa Red Diamonds / EDION Stadium Hiroshima / From Sat., March 3
 Wed., May 9 / 7:00 pm / vs. Gamba Osaka / EDION Stadium Hiroshima / From Sat., April 7

TICKETS Seats / Advance Tickets / At the Door

W Reserved Seats SS / ¥5,300 / ¥5,900 W Reserved Seats SA / ¥3,700 / ¥4,300
 W Unreserved Seats for Adults / ¥2,600 / ¥3,200
 W Unreserved Seats for Students (High School Students and under) / ¥1,000 / ¥1,500



ACCESS

W EDION Stadium Hiroshima (Hiroshima Big Arch)

Take the *Astramline* bound for *Koiki-koen-mae* (広域公園前) and get off at the last station, *Koiki-koen-mae* (広域公園前).

From *Hondori* Station: One way fare - ¥480 Travel time - 35 min.

TICKET OFFICES

W Sanfrecce Hiroshima Official Shop V-POINT (Shareo, underground shopping mall) / Tel. 248-3317 / Mon. – Sat.: 11 am – 9 pm; Sun. & national holidays: 10 am – 8 pm / Open every day
 W EDION Play Guide (SUNMALL, 1F) W Fukuya (Hiroshima Station) (7F) W Alpark Tenmaya (3F)
 W Convenience Stores (FamilyMart, Seven-Eleven, CircleKSunkus and Lawson)

INQUIRIES: Sanfrecce HIROSHIMA Tel. 233-3233 URL: www.sanfrecce.co.jp

Please feel free to contact the International Exchange Lounge at 082-247-9715.

E-mail: golounge@pcf.city.hiroshima.jp

March 2018

Hiroshima Dragonflies

2017 – 2018 B2 League

μ Hiroshima Dragonflies is a professional basketball team in Hiroshima.

GAME SCHEDULE Date / Starting Time / Game / Venue

² Only the games scheduled to be held in Hiroshima are listed below. For away games, please check the Hiroshima Dragonflies' official website.

μ MARCH

Sat., March 10 / 6:30 pm / vs. Kumamoto Volters / Hiroshima Sun Plaza
 Sun., March 11 / 1:30 pm / vs. Kumamoto Volters / Hiroshima Sun Plaza
 Sat., March 24 / 6:30 pm / vs. Kagawa Five Arrows / Hiroshima Sun Plaza
 Sun., March 25 / 1:30 pm / vs. Kagawa Five Arrows / Hiroshima Sun Plaza

μ APRIL

Sat., April 7 / 6:30 pm / vs. Ehime Orange Vikings / Hiroshima Sun Plaza
 Sun., April 8 / 1:30 pm / vs. Ehime Orange Vikings / Hiroshima Sun Plaza
 Sat., April 14 / 6:30 pm / vs. Earthfriends Tokyo Z / Hiroshima Sun Plaza
 Sun., April 15 / 1:30 pm / vs. Earthfriends Tokyo Z / Hiroshima Sun Plaza
 Sat., April 28 / 6:30 pm / vs. Kanazawa Samuraiz / Hiroshima Sun Plaza
 Sun., April 29 / 1:30 pm / vs. Kanazawa Samuraiz / Hiroshima Sun Plaza

μ MAY

Wed., May 2 / 7:00 pm / vs. Bambitious Nara / Hiroshima Sun Plaza

TICKETS (At the Door)

w Reserved seats: ¥3,700 - ¥13,400
 w Unreserved seats (1st floor seats): Adults-¥3,200 Children-¥2,100
 w Unreserved seats (2nd floor seats): Adults-¥2,600 Children-¥1,500

ACCESS

w **Hiroshima Sun Plaza** (1-1 Shoko Center 3-chome, Nishi-ku, Hiroshima City)
 From JR Shin Inokuchi (新井口) Station or Shoko Center Iriguchi (商工センター入口) Streetcar Stop, walking time to destination is 5 minutes.

TICKET OFFICES

w Hiroshima Dragonflies Club Shop (Hiroshima Marina Hop / Tel. 082-297-6825 / 10:00 am – 8:00 pm)
 (The club shop sells advanced tickets only.)
 w Ticket PIA w Convenience Stores (FamilyMart, Seven Eleven, CircleKSunkus and Lawson)
 w Hiroshima Power House (Basketball pro Shop) w Taiikusha (Sporting-goods store)

INQUIRIES

w Hiroshima Dragonflies Tel. 082-297-6825 (Mon. – Fri., 10:00 am – 5:30 pm)
 HP: <http://hiroshimadragonflies.com>
 w NBL (National Basketball League of Japan) Official HP: <http://www.nbl.or.jp>

Please feel free to contact the International Exchange Lounge at 082-247-9715.

E-mail: golounge@pcf.city.hiroshima.jp

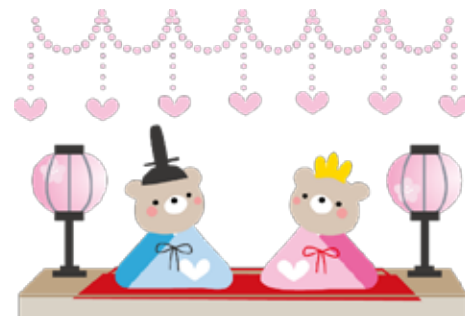
March 2018

Seasonal Event Information

March 2018

Ⓔ Event schedules are subject to change.
Please contact event organizers before you go.

Events Held in Hiroshima City



Sun., March 4 & 18

Hiroshima Minato Marché ひろしまみなとマルシェ

TIME: 9:00 am – 3:00 pm

PLACE: Open Space between East and West Terminal of Hiroshima Port, Minami-ku

ACCESS: Take the No. 1, 3 or 5 streetcar bound for Hiroshima Port and get off at the last stop, Hiroshima Port.

INQUIRIES: Hiroshima Minato Marché Office 082-255-6646

© You can buy and taste locally-grown fresh vegetables and other food products at the market.
“Hiroshima Harbor Festival” will be held on March 17 & 18 (see below for more information).

Sun., March 11

Memorial Service for the Great East Japan Earthquake in Hiroshima

3.11東日本大震災を忘れない追悼の集い 広島

TIME: 5:30 pm – 7:30 pm

PLACE: *Shinsui Terrace*, Motoyasugawa River inside Peace Memorial Park, Naka-ku

ACCESS: Get off at Genbaku Dome-mae Streetcar Stop.

INQUIRIES: Hiroshima City Volunteer Information Center 082-264-6408

© Offer a silent prayer for the earthquake victims while standing around candles.

I 3.11 HANDS IN PRAYER I

In addition to the evening service, please join hands with those around you and offer a silent prayer for the victims of the Great East Japan Earthquake at 2:46 pm on March 11.

Sat., March 17 & Sun., March 18

The 6th Hiroshima Harbor Festival だい かいひろしま 第6回 広島 みなとフェスタ

TIME: 10:00 am – 4:00 pm

PLACE: *Hiroshima Minato Koen* (park), around Hiroshima Port & Ninoshima Island, Minami-ku

ACCESS:

® *Hiroshima Minato Koen* & Hiroshima Port:

Take the No. 1, 3 or 5 streetcar bound for Hiroden Ujina or Hiroshima-ko and get off at the last stop, Hiroshima-ko.

® *Ninoshima Island*: Get on a ferry to Ninoshima Island from Hiroshima Port

INQUIRIES: Executive Committee 082-250-8935

© Various events such as stage performances, a food area and workshops will be held.



Please feel free to contact the International Exchange Lounge at 082-247-9715.

E-mail: golounge@pcf.city.hiroshima.jp

March 2018

Sun., March 18**Momo-mi (Peach Blossom-viewing) Tea Ceremony**もも み ちゃがい
桃見茶会**TIME:** 9:30 am – 3:00 pm**PLACE:** Shukkeien Garden**ACCESS:** From Shukkeien-mae Streetcar Stop, walking time to destination is 5 minutes.**FEE:** ¥1,500 for the tea ceremony² Admission fee for the garden is also required.

Adults - ¥260, University & High school students - ¥150	}
Junior high & Elementary school students - ¥100	

INQUIRIES: Shukkeien Garden 082-221-3620**Wed., March 21****Hiroshima Kanzake (hot sake) Festival**はる はなみ しんしゅん ひろしまかんざけ
春だ!花見だ! 新春!広島燗酒フェスティバル**TIME:** 11:00 am – 4:00 pm**PLACE:** Chuo Koen (park) & Hiroshima Castle (Ni-no-maru), Naka-ku**ACCESS:** • From Kamiya-cho-higashi or Kamiya-cho-nishi Streetcar stop, walking time to destination is 15 minutes.

, Take a Hiroshima Meipuru-pu (Hiroshima Sightseeing Loop Bus; Orange route & Lemon route) and get off at Hiroshima-jo (Gokoku-jinja-mae). Walking time to destination is 6 minutes.

TICKETS: ✓ **Food is not included in the ticket prices below**

Advance: 1,500 (for 6 cups of sake) / At the venue: ¥300 per a cup

² You can buy advance tickets online (RCC online ticket: <http://www.cnplayguide.com/rcc/>). Or, you can also buy the tickets at Ishikawa Liquor Shop (inside Mitsukoshi Department Store of Furue shop).**INQUIRIES:** Executive Committee 090-7122-2982 (11 am – 6 pm) E-mail: juntantan88@gmail.com**Sat., March 24 & Sun., March 25****Setouchi Tabi-guse Festival**

せとうち たび 旅グセ。フェスタ

TIME: Mar. 24: 10:00 am – 6:00 pm / Mar. 25: 10:00 am – 5:00 pm**PLACE:** The Open Space of the Former Municipal Baseball Stadium, Moto-machi, Naka-ku**ACCESS:** Get off at Kamiya-cho-nishi or Genbaku Dome-mae Streetcar Stops.**ADMISSION FEE:** Free ² Food and drink will incur extra charges.**INQUIRIES:** Hiroshima HOME TV 082-221-4760

© You can enjoy various dishes around Setouchi area.

© Kagura and Awa-odori performances will also be held.

Sun., April 8**Kan-ou (Cherry Blossoms-viewing) Tea Ceremony**かんおうちゃがい
観桜茶会**TIME:** 9:30 am – 3:00 pm**PLACE:** Shukkeien Garden**ACCESS:** From Shukkeien-mae Streetcar Stop, walking time to destination is 5 minutes.**ADMISSION FEE:** Adults - ¥260, University & High school students - ¥150, Junior high & Elementary school students - ¥100 ² Fee for the tea ceremony is also required.**INQUIRIES:** Shukkeien Garden 082-221-3620

Please feel free to contact the International Exchange Lounge at 082-247-9715.

E-mail: golounge@pcf.city.hiroshima.jp

March 2018

Fri., April 27 – Sun., May 6**Meat Festival with World Beer and Gourmet Stadium 2018****にく フェス with せかい のビールとグルメスタジアム 2018****TIME:** 10:00 am – 9:00 pm ² Apr. 27 (Fri.), May 1 (Tue.) & 2 (Wed.): 11:00 am – 9:00 pm**PLACE:** The Open Space of the Former Municipal Baseball Stadium, Moto-machi, Naka-ku**ACCESS:** Get off at Kamiya-cho-nishi or Genbaku Dome-mae Streetcar Stops.**ADMISSION FEE:** Free, except for entry to the “kids’ park”. ² Food and drink will incur extra charges.**INQUIRIES:** Executive Committee (inside the Hiroshima TV building)

082-249-1218 (Mon. – Fri., 10 am – 6 pm)

© You can enjoy various meat dishes, and beer from all over the world.

© Remember, no driving if you drink alcohol! Pets (except service dogs) are not allowed to enter the venue. Event may be canceled if there is bad weather.

Events Held on Miyajima**Thurs., March 8****Memorial Service for Used Kitchen Knives**ほうちょうくよう
庖丁 供養**TIME:** From 11:00 am onward**PLACE:** Daishoin Temple, Miyajima**ACCESS:** Get off at JR Miyajima-guchi Station (JR Sanyo Line) or the Miyajima Stop (Hiroden Streetcar Miyajima Line), then take a ferry to Miyajima.**INQUIRIES:** Daishoin Temple 0829-44-0111

© This is a ritual to show gratitude for well-used kitchen knives.

Tue., March 20**Kiyomori Shrine Festival**きよもりじんじゃさい
清盛神社祭**TIME:** From 11:00 am onward**PLACE:** Kiyomori Shrine, Miyajima**ACCESS:** Get off at JR Miyajima-guchi Station (JR Sanyo Line) or Miyajima Stop (Hiroden Streetcar Miyajima Line), then take a ferry to Miyajima.**INQUIRIES:** Itsukushima Shrine 0829-44-2020© This is a festival dedicated to the illustrious memory of *Taira-no Kiyomori* (1118-1181). After the ritual, *Bugaku* (court music and dance) will be played at Itsukushima Shrine.**Wed., March 21 – Tue., April 3****The 18th Miyajima Hina Doll Presentation**だい かい ひな
第18回 みやじま 雛めぐり**PLACE:** Various places in Miyajima-choResidences or shops displaying a pink flag will allow you to view their *Hina* dolls.**ACCESS:** Get off at JR Miyajima-guchi Station (JR Sanyo Line) or Miyajima Streetcar Stop (Hiroden Streetcar Miyajima Line), then take a ferry to Miyajima.**ADMISSION FEE:** Free**INQUIRIES:** *Miyajima Kanko Kyokai* (Tourist Association) 0829-44-2011© Antique *Hina* dolls which have been passed down from established families in Miyajima will be on display.

Please feel free to contact the International Exchange Lounge at 082-247-9715.

E-mail: golounge@pcf.city.hiroshima.jp

March 2018

Sun., March 25**The 14th Miyajima Kiyomori Festival** だい かい はる よ みやじまきよもり **第14回春を呼ぶ宮島清盛まつり****TIME:** 1:00 pm – 3:30 pm**PLACE:** Miyajima Pier Omote-sando Shopping Street Mikasa Beach Itsukushima Shrine Kiyomori Shrine**ACCESS:** Get off at JR Miyajima-guchi Station (JR Sanyo Line) or Miyajima Streetcar Stop (Hiroden Streetcar Miyajima Line), then take a ferry to Miyajima.**INQUIRIES:** *Miyajima Kanko Kyokai* (Tourist Association) 0829-44-2011

© People in costumes of the Heian Period (794-1185) will parade from Miyajima Pier to Kiyomori Shrine. The parade will be held in the shrine if it rains.

Sun., April 29 & Mon., April 30**Hiroshima Yoga Peace '18** ひろしまヨガピース '18**SCHEDULE:** Please check the website below for the schedule.

Apr. 29: 8:30 am – 8:00 pm / Apr. 30: 8:30 am – 8:00 pm

PLACE: Iwaso Yutenkaku, Outside of Hiramatsu-jaya, Tenshinkaku (café) & Senjokaku, Miyajima**ACCESS:** Get off at JR Miyajima-guchi Station (JR Sanyo Line) or Miyajima Streetcar Stop (Hiroden Streetcar Miyajima Line), then take a ferry to Miyajima.**FEE:** ¥3,500 for 1 class; ¥9,500 for 3 classes; ¥14,000 for 5 classes; Yoga mat rental: ¥500 / day**TO APPLY:** Applications will be accepted through the website (<https://ticketyogap.shop-pro.jp/>) (Japanese only).**INQUIRIES:** Hiroshima Yoga Peace Executive Committee HP: <http://www.hiroshima-yogapeace.com>

© Famous yoga teachers from Japan and abroad will come and teach you yoga from various schools.

Events Held Outside of Hiroshima City**Sat., February 10 – Sun., March 25****Hina Doll Presentation in Takehara** たけはら まちな ひな **たけはら町並み雛めぐり****TIME:** Open hours vary according to places.**PLACE:** Around the Special Directory of Historical Buildings Area in Takehara City**ACCESS:** From JR Takehara Station (JR Kure Line), walking time to destination is 15 minutes.**ADMISSION FEE:** Some places will require an admission fee.**INQUIRIES:** NPO Network Takehara 0846-22-0214© March 3rd is *Hina Matsuri* (*Hina Festival*), a day to wish girls good health and a long life. Most families with daughters celebrate by displaying *hina* dolls. The dolls are offered sweetened puffed rice (*hina-arare*), white sake containing rice malt (*shirozake*), colored lozenge-shaped rice cakes (*hishi-mochi*), etc. (Abstracted from *The Japanese-English Dictionary for Conversation about Japan*, p.578, Obunsha)© Antique *hina* dolls will be on display at this event. Various events will also be held during the event period.**Sat., February 17 – Sun., March 18****The 16th Hina Matsuri (Girl's Festival) in Tomo** だい かい とも まちなみ まつり **第16回 鞆・町並ひな祭****TIME:** Open hours vary according to facilities.² Tomo-no-ura Rekishi Minzoku Shiryō Kan (museum): 9:00 am – 5:00 pm**PLACE:** Tomo-cho, Fukuyama City**ACCESS:** Take a Tomotetsu bus from JR Fukuyama Station (JR Sanyo Line) and get off at Tomo-no-ura (a 30 min. bus ride).**ADMISSION FEE:** Free ² Admission Fee for Tomo-no-ura Rekishi Minzoku Shiryō Kan is required: Adults & University students-¥150, High school students and under-Free**INQUIRIES:** Executive Committee (*Tomo-no-ura Rekishi Minzoku Shiryō Kan*) 080-5614-2778

Please feel free to contact the International Exchange Lounge at 082-247-9715.

E-mail: golounge@pcf.city.hiroshima.jp

March 2018

- © March 3rd is *Hina Matsuri* (*Hina Festival*), a day to wish girls good health and a long life. Most families with daughters celebrate by displaying *hina* dolls. The dolls are offered sweetened puffed rice (*hina-arare*), white sake containing rice malt (*shirozake*), colored lozenge-shaped rice cakes (*hishi-mochi*), etc. (Abstracted from The Japanese-English Dictionary for Conversation about Japan, p.578, Obunsha)
- © Antique *hina* dolls will be on display at this event.

Sat., February 17 – Sun., March 25

Hina Matsuri (girl's festival) in Joge-cho てんりょうじょうげ 天領上下ひなまつり

PLACE: *Shirakabe no Machinami* (Shopping Street), Joge-cho, Fuchu City

ACCESS: From JR Joge Station (JR Fukuen Line), walking time to destination is 3 minutes.

INQUIRIES: Executive Committee 0847-62-3999

- © March 3rd is *Hina Matsuri* (*Hina Festival*), a day to wish girls good health and a long life. Most families with daughters celebrate by displaying *hina* dolls. The dolls are offered sweetened puffed rice (*hina-arare*), white sake containing rice malt (*shirozake*), colored lozenge-shaped rice cakes (*hishi-mochi*), etc. (Abstracted from The Japanese-English Dictionary for Conversation about Japan, p.578, Obunsha). *Hina* dolls will be on display at this event.
- © A market area, "*Deko-ichi*", will be held on Mar. 3 & 4.
- © *Tezukuri-ichi* (handicrafts market) will be held on Mar. 17 & 18.

Sat., March 10

Sakagura Walking Tour (Free) さかぐら 酒蔵のまち てくてくガイド

TIME: Tour will start on an as-needed basis between 10:00 am and 11:00 am.

MEETING PLACE: *Saijo Sakagura-dori Kanko Annai-jo* (Tourist Information Center), Higashihiroshima City

ACCESS: Get off at JR Saijo Station (JR Sanyo Line).

PARTICIPATION FEE: Free

INQUIRIES: *Saijo Sakagura-dori Kanko Annai-jo* Tel. & Fax 082-421-2511

- © A volunteer guide will show you *Sakagura-dori* (Sake Brewery Street). During the tour you will be able to taste sake and the purified water that is used to make it.
- © A regular guided tour (fee-based) is also held every day except on the 10th. Reservations are required a week in advance. An English speaking guide is available. Please contact the *Saijo Sakagura-dori* Tourist Information Center in advance.

Sun., March 18

The 2nd Setoda Lemon Festival だい かい 第2回 せとだレモン 祭 まつり

TIME: 10:00 am – 3:00 pm

PLACE: In front of Kosanji Temple Museum, Jodo-en, Open Space in front of Setoda Shimin Kaikan, etc., Setoda-cho, Onomichi City

ACCESS: • Take a "*Shimanami Liner*" express bus from Hiroshima Bus Center (Hiroshima Sogo Department Store, 3F) and get off at Setoda Bus Stop (a 1 hour and 40 min. bus ride). Then take another bus from there and get off at Kosanji-mae.

² Please note that reservations are required to take a "*Shimanami Liner*". Call the Hiroko Reservation Center (082-238-3344) for more information.

Ⓚ Get on a ferry from Mihara Port or Onomichi Port and get off at Setoda Port. Walking time to destination is 10 minutes.

INQUIRIES: *Onomichi City Kanko Kyokai* (Tourist Association) 0848-36-5495

- © Setoda area is a major producer of domestic lemons.



Please feel free to contact the International Exchange Lounge at 082-247-9715.

E-mail: golounge@pcf.city.hiroshima.jp

March 2018

Tue., March 20**Hatsuka-no-ichi Market** はつか いち 廿日の市**TIME:** 8:00 am – 10:00 am**PLACE:** The Open Space in front of Hatsukaichi City Hall, Hatsukaichi City**ACCESS:** From Hatsukaichi Shiyakusho-mae (Hiroden Streetcar Miyajima Line), walking time to destination is 5 minutes.**INQUIRIES:** *Hatsukaichi Kanko Kyokai* (Tourist Association) 0829-31-5656**Sat., March 24 & Sun., March 25****Spring Festival in Saizaki-cho, Noji** さいざきちょうのうじはるまつり 幸崎町能地春祭り**TIME:** 1:00 pm – 5:00 pm**PLACE:** Noji, Saizaki-cho, Mihara City**ACCESS:** From JR Aki-saizaki Station (JR Kure Line), walking time to destination is 10 minutes.**INQUIRIES:** *Mihara City Kyoiku linkai* 0848-64-9234

© The *Futon Danjiri* (a float with seven futons atop it) and *Shishi-daiko* (Japanese drums played by children) parade are the highlights of this festival. *Futon-danjiri* has been designated as an intangible cultural asset of Hiroshima Prefecture.

Sat., March 24 – Sun., April 8**Sakura (cherry blossom) Festival at Kosanji Temple** こうさんじさくら 耕三寺桜まつり**PLACE:** Kosanji Temple & Kosanji Temple Museum, Onomichi City

ACCESS: • Take a “*Shimanami Liner*” express bus from Hiroshima Bus Center (Hiroshima Sogo Department Store, 3F) and get off at Setoda Bus Stop (a 1 hour and 40 min. bus ride). Then take another bus from there and get off at Kosanji-mae.

² Please note that reservations are required to take a “*Shimanami Liner*”. Call the Hiroko Reservation Center (082-238-3344) for more information.

↳ Get on a ferry from Mihara Port or Onomichi Port and get off at Setoda Port.

ADMISSION FEE FOR THE TEMPLE & THE MUSEUM:

Adults-¥1,400 University students-¥1,000 High school students-¥800

Junior high school students and under-Free

INQUIRIES: Kosanji Temple & Kosanji Temple Museum 0845-27-0800

© 200 cherry blossom trees will be in full bloom during this period. Various events such as offering up cherry blossom-flavored tea and a photo contest will be held.

Sun., March 25**Kagura Grand Prix Special Commemorative Performance**

ひろしま かぐら じゅしやうきねん かぐら とくべつこうえん 神楽グランプリ 受賞記念「神楽ドーム 特別公演」

TIME: Venue open – 9:30 am / Opening event – 10:30 am / *Kagura* start – From 11:00 am onward**PLACE:** *Kagura Monzen Touji Mura*, *Kagura Dome*, Akitakata City

ACCESS: • Get on an express bus (*kosoku bus*) bound for Miyoshi and Shobara from Hiroshima Bus Center (Sogo Hiroshima Department Store, 3F) and get off at Midori Kosoku. Then take a taxi or a shuttle bus from there (advanced reservations required for both taxi and shuttle bus).

↳ From Takata I.C. on the Chugoku Expressway, driving time to destination is 7 minutes.

TICKETS: ⑥ Advance: High school students and up-¥1,200

Junior high & elementary school students-¥600

² Advance tickets are sold at *Hiroshima Yume Plaza* on the *Hondori* shopping street.

⑥ At the door: High school students and up-¥1,500

Junior high & elementary school students-¥800

INQUIRIES: *Kagura Monzen Touji Mura* 0826-54-0888

Please feel free to contact the International Exchange Lounge at 082-247-9715.

E-mail: golounge@pcf.city.hiroshima.jp

March 2018

Sun., April 1**Sakura (cherry blossom) Festival in Hatsukaichi** はつかいち ^{さくら} 桜まつり**TIME:** 9:30 am – 4:30 pm**PLACE:** Around the Northern Area of Mokuzai-ko (port), Shohoku Ground, Hatsukaichi City**ACCESS:** From JR Hatsukaichi Station (JR Sanyo Line), walking time to destination is 13 minutes.**INQUIRIES:** *Hatsukaichi Kanko Kyokai* (Tourist Association) 0829-31-5656

© Parade, stage performances, kiosks, etc.

Sat., April 7**Sakura (cherry blossom) Tea Ceremony** さくら ^{ちゃかい} 茶会**TIME:** 11:00 am – 3:30 pm**PLACE:** In front of JR Onomichi Station, Onomichi City**ACCESS:** Get off at JR Onomichi Station (JR Sanyo Line).**TICKETS:** Advance tickets-¥2,000 At the venue-¥2,500² Tickets include the fee for a cup of green tea, a lunch box, etc.**INQUIRIES:** *Onomichi Shoko Kaigisho, Josei Kai* 0848-22-2165**Sat., April 28****Kagura Performance in Yoshiwa** はるせんばつよしわかぐらきょうえんたいかい ^春 選抜吉和神楽競演大会**TIME:** 9:15 am – 6:00 pm (The venue will open at 8:30 am.)**PLACE:** Gymnasium inside *Mominoki Shinrin Koen* (Forest Park), Yoshiwa, Hatsukaichi City**ACCESS:** From Hatsukaichi Shiyakusho-mae Streetcar Stop (Hiroden Miyajima Line), take a bus bound for Yoshiwa and get off at Yoshiwa-shisho (a 90 min. bus ride)**TICKETS:** ① Advance: High school students and up-¥2,000

Junior high and elementary school students-¥500

² Advance tickets are sold at *Hiroshima Yume Plaza* on the *Hondori* shopping street and *Alpark Tenmaya* 3F, Ticket Salon, etc.

② At the door: High school students and up-¥2,500

Junior high and Elementary school students-¥500

INQUIRIES: *Hatsukaichi Kanko Kyokai* (Tourist Association), Yoshiwa Branch 0829-77-2404*Hatsukaichi City Office, Yoshiwa Branch* 0829-77-2111*Mominoki Shinrin Koen* 0829-77-2011**Events Held in Yamaguchi Prefecture****Sat., April 7 & Sun., April 8****Byakko (white fox) Festival at Yuda Onsen** ゆだおんせんびやっこ ^{湯田温泉白狐} まつり**TIME:** ① Apr. 7: 10:00 am – 8:00 pm ② Apr. 8: 10:00 am – 3:30 pm**PLACE:** Yuda Onsen, *Inoue Koen* (park), Yamaguchi City**ACCESS:** From JR Yuda Onsen Station (JR Yamaguchi Line), walking time to destination is 10 minutes.**INQUIRIES:** Executive Committee 083-941-5379 (closed on Tuesdays and Wednesdays)© Various events such as a white fox parade on the 7th and food kiosks & a motor show on the 8th will be held.

Please feel free to contact the International Exchange Lounge at 082-247-9715.

E-mail: golounge@pcf.city.hiroshima.jp

March 2018

Municipal Facilities



G Facilities

(Address / Telephone / Open Hours / Closed / Admission Fee / URL)

Admission is generally allowed up to 30 min. prior to closing.

P Hiroshima City Forest Park & Insectarium

(173 Fujigamaru, Fukuda-cho, Higashi-ku 732-0036 / Forest Park: 899-8241, Insectarium: 899-8964 / Forest Park: 9:00 am - 4:30 pm; Insectarium: 9:00 am - 4:30 pm / Closed: Forest Park - Mar. 7, 14, & 22; Insectarium - Mar. 7, 14, 22 & 28 / Admission Fees for the Insectarium: Adults-¥510, Seniors & High school students-¥170, Junior High & Elementary school students-Free (Free admission for High school students on Saturdays (except on national holidays and during school holidays)) / Forest Park: <http://www.daiichibs-shitei.com/forest/> Insectarium: <http://www.hiro-kon.jp/>)

Events at the Forest Park

- ! **Park Sports: Kubb** / Sun., Mar. 11 / 10:00 am - 3:00 pm 2 Participants will be accepted between 10:00 am and 2:00 pm. The first 50 people will be accepted on the day. / *Shibafu Hiroba* / Participation fee: Free
- J Kubb is a Swedish lawn game.

Events at the Insectarium

- ! **Touch Insects!** / Mar. 3 (Sat.), 11 (Sun.), 17 (Sat.), 18 (Sun.), 21 (Wed.) & 25 (Sun.) / j 10:00 am - noon k 1:00 pm - 3:00 pm

E The Hiroshima Botanical Garden

(3-495 Kurashige, Saeki-ku 731-5156 / 922-3600 / 9:00 am - 4:30 pm / Closed on Fridays / Adults-¥510, Seniors & High school students-¥170, Junior High and Elementary school students-Free (Free admission for High school students on Saturdays (except on national holidays and during school holidays)) / <http://www.hiroshima-bot.jp/>)

<Exhibitions> Exhibitions will close at 3:30 pm on their last day.

✓ Tenji Shiryo-kan

- { **Floral Decorations** / Sat., Mar. 3 - Thurs., Mar. 8
- { **The World of Plant Dyeing** / Sat., Mar. 10 - Thurs., Apr. 5

✓ Tenji Onshitsu (hothouse exhibitions)

- { **Geraniums** / Sat., Mar. 10 - Wed., Apr. 18

✓ Okugai Tenji-jo (outdoors exhibits)

- { **Christmas Roses** / Sat., Feb. 24 - Sun., Mar. 4

<Lectures>

- { **Christmas Roses** / Sat., Mar. 3 & Sun., Mar. 4 / 11:00 am - noon
- { **Floral Decorations** / Sun., Mar. 4 / j 11:00 am - noon k 1:30 pm - 2:30 pm
- { **Junior Project** / Sun., Mar. 11 / j 11:00 am - noon k 1:30 pm - 2:30 pm
- { **Lecture on Plant Dyeing** / Sun., Mar. 18 / 1:30 pm - 3:30 pm

5-Days Children's Museum of Culture and Science

(5-83 Moto-machi, Naka-ku 730-0011 / 222-5346 / 9:00 am - 5:00 pm / Closed on Mar. 5 - 9, 12, 19, 22 & 26 / Admission fee for planetarium is required (see below). / <http://www.pyonta.city.hiroshima.jp/>)

Planetarium

I Admission Fee for Planetarium:

Adults-¥510, Seniors & High school students-¥250, Junior High & Elementary school students-Free 2 Free admission for High school students on Saturdays (except on most national holidays and during school holidays). Admission fee for adults is ¥250 on the second Saturday of every month (except on most national holidays and during school holidays).

¶ Planetarium Programs / Adults-¥510, Seniors & High school students-¥250

CE **Adventure to Mars** (45 min.) / Sat., Mar. 10 - Sun., Sept. 2

Time Schedule

- ✓ Weekdays: 11:00 am
- ✓ Sat., Sun., national holidays & Mar. 27 - Apr. 5: • 10:00 am , 3:00 pm
- **Feel the Earth ~ Music by Taro Hakase ~** / Until Mon., Jul. 16

Time Schedule

- ✓ Weekdays: 2:00 pm
- ✓ Sat., Sun., national holidays & Mar. 27 - Apr. 5: • 11:00 am , 2:00 pm

¶ 360° Full Dome Show:

Emperor Penguins in Antarctica (40 min.) / Until Fri., Apr. 27 / Adults-¥510, Seniors & High school students-¥250

Please feel free to contact the International Exchange Lounge at 082-247-9715.

E-mail: golounge@pcf.city.hiroshima.jp

March 2018

Time Schedule

- ✓ Weekdays: 3:00 pm
- ✓ Sat., Sun., national holiday & Mar. 27 - Apr. 5: 1:00 pm

¶ Refretarium

CE 2017-18 Winter Program / Until Fri., Mar. 16

Time Schedule

- ✓ Weekdays: 1:00 pm
- ✓ Sat., national holiday: 4:00 pm

- 2018 Spring Program / Sat., Mar. 17 - Fri., Jun. 8

Time Schedule

- ✓ Weekdays: 1:00 pm
- ✓ Sat., national holiday & weekdays between Mar. 27 and Apr. 5: 4:00 pm

Admission Fee

High school students and above-¥200

- ² This is a program to refresh your mind and body during lunch time while watching the starry sky and listening to music. Although the main target of this program is adults, anyone who wishes to rejuvenate themselves is welcome.

¶ Starry Sky Tour: Dwarf Planets - Solar System Exploration / Sundays until Sun., Apr. 15 / 4:00 pm - 4:50 pmEvents

- ¶ Exhibition: Meteorites / Sat., Feb. 17 - Sun., Mar. 11 / 3F, Tenji Hall / Free admission
- ¶ Theater for Children / Sun., Mar. 4 / • Noon - 1:00 pm , 2:30 pm - 3:30 pm ² Doors will open at 11:40 am for • and at 2:10 pm for , . / 1F, Apollo Hall (250 seats) / Free admission
- ¶ Craft Workshops / Mar. 3 (Sat.), 11 (Sun.), 18 (Sun.) & 21 (Wed.) / 1:00 pm - 3:30 pm / For children under elementary school entry age, elementary school students (1st - 3rd grade) and their guardians / 3F, Kosaku-shitsu (Craft Room) / Fee: ¥30 for materials
- ² Each day's program is different. For more information, please contact the museum.
- ¶ Science Show / • 1:30 pm - 2:00 pm , 3:00 pm - 3:30 pm / 1F, Science Studio / Fee: Free
- w Static Electricity / Sat., Mar. 3 & 10
- w Balloons / Sat., Mar. 24

μ The events listed below require advance applications.

To APPLY: Send an *ofuku-hagaki* (return postcard) to the museum, postmarked by each event's application deadline with the following information: applicants' names, address, telephone number, school year and the event name and time you wish to attend.

Science Workshop® Make a Distribution Map of Dandelions around

Hiroshima Castle / タンポポ 大捜査網^{だいそうさもう}

("Tanpopo dai-sousamou") / Sun., Apr. 8 / 9:30 am - 12:30 pm / For elementary school students / Fee: ¥200 / Closing date for applications: Sun., Mar. 25 ² 20 people will be selected at random by a drawing of names.

Craft Workshops® Kaleidoscope / 万華鏡^{まんげきょう}づくり ("Mangekyou zukuri") / Sun., Mar. 25 / j 9:30 am - noon k 1:30 pm - 4:00 pm / For elementary school students / Fee: ¥400 / Closing date for applications: Sun., Mar. 11

² 20 people will be selected at random by a drawing of names for each time slot.

® Craft Workshop Using a Motor / 公開^{こうかい} 発明^{はつめい}

教室^{きょうしつ}: モーター^{もーター}を使った^{つか} 工作^{こうさく} ("Kokai hatsumei kyoushitsu: Motor wo tsukatta kosaku") / Sat., Apr. 14 / 1:30 pm - 4:00 pm / For elementary (4th - 6th grade) and junior high school students / Fee: Free / Closing date for applications: Sat., Mar. 31 ² 24 people will be selected at random by a drawing of names.

J Hiroshima City Asa Zoological Park

(Asa-cho Dobutsuen, Asakita-ku 731-3355 / 838-1111 / 9:00 am - 4:30 pm / Closed on Thursdays (except Mar. 29) / Adults-¥510, Seniors & High school students- ¥170, Junior High & Elementary school students-Free / <http://www.asazoo.jp/>)

- Backyard Guide Tour / Sat., Mar. 3, 10, 17 & 24 / j 11:00 am k 1:30 pm / Please gather near the entrance at 9:00 am on each activity day. The first 20 - 40 people can participate. The number of participants will differ depending on where you visit. We will explore a different place on each trip.
- Sketching Event: Let's Draw Animals and a Fire Engine / Sun., Mar. 11 / 9:30 am - 1:00 pm ² Applications will be accepted from 9:00 am to 11:30 am at the main entrance on the day. ² Drawing paper will be given to each person. Please bring other painting tools with you. ² This event will be postponed until Sun., Mar. 18 if it rains.
- Feeding Animals / Mar. 24 (Sat.), 25 (Sun.), 31 (Sat.) & Apr. 1 (Sun.) / j Giraffes: From 11:00 am onward on Mar. 25 & Apr. 1 k Goats & Sheep: From 1:00 pm onward on Mar. 24 & 31 ² Tickets will be distributed from 10:30 am for • and from 12:30 pm for k to the first 50 people (•) and for the first 100 people (k). ² Feeding giraffes will be canceled if it rains.

Please feel free to contact the International Exchange Lounge at 082-247-9715.

E-mail: golounge@pcf.city.hiroshima.jp

March 2018

- Try to Ride on a Mini Carp *Shinkansen* / Sat., Mar. 31 / 11:00 am - noon
 - ² The first 300 people will be accepted on the day. ² This will be canceled if it rains.
- Meet the Black Rhinoceros named *Hana* / Sat., Mar. 31 / • 1:30 pm , 1:45 pm
 - ² Participation tickets will be distributed from 9:00 am at the main entrance until 10 spots are filled for each time slot.
 - ³ The black rhinoceros, *Hana*, is the world's oldest living black rhinoceros.
- Giant Salamander Facility Tour / Sat., Mar. 31 / 11:00 am - 11:30 am ² Participation tickets will be distributed from 9:00 am at the main entrance until 20 spots are filled.

U Numaji Transportation Museum (Hiroshima City Transportation Museum)

(2-12-2 Chorakuji, Asaminami-ku 731-0143 / 878-6211 / 9:00 am - 5:00 pm / Closed on Mar. 5 - 8, 12, 19 & 26 / Adults-¥510, Seniors & High school students-¥250, Junior High school students and under-Free
/ <http://www.vehicle.city.hiroshima.jp>)

Ž Museum Spring Festival / Mar. 10 (Sat.), 11 (Sun.), 17 (Sat.), 18 (Sun.), 21 (Wed.), 24 (Sat.) & 25 (Mon.)

ê Special Exhibition-Related Events ê

- ^a The Most Advanced Robots Show by Kyushu Institute of Technology / Sat., Mar. 10 & Sun., Mar. 11 / • 10:15 am - 10:45 am , 12:45 pm - 1:15 pm , 2:15 pm - 2:45 pm / 1F, *Tamokuteki Hall* / Fee: Free
- ^a Step Inside a MAZDA RX500 / Sat., Mar. 10 & Sun., Mar. 18 / • 11:00 am - noon , 2:00 pm - 3:00 pm / 1F, Entrance Hall / Fee: Free
 - ² The car engine will not be started.
- ^a Children's Craft Workshops / Mar. 11 (Sun.), 17 (Sat.), 18 (Sun.), 21 (Wed.) & 25 (Sun.) / 1:00 pm - 3:30 pm / For preschoolers, elementary school students and their guardians / 1F, Craft Room / Fee: ¥50 for materials ² The first 100 groups for each time slot can participate on the day of.
- ^a Stage Shows / 1F, *Tamokuteki Hall* / Fee: Free
 - © Puppet Show / Sat., Mar. 17 / • 1:30 pm - 2:15 pm , 3:00 pm - 3:45 pm
 - © Fire Music Band Concert / Sun., Mar. 18 / 1:30 pm - 2:00 pm
- ^a Exhibition on a Streetcar Exposed to the A-Bomb / Sat., Mar. 17 / j 11:00 am - noon k 1:30 pm - 3:00 pm / *Okugai Hiroba* (outdoor open space) / Fee: Free
 - ² Exhibition will be canceled if the weather is bad.

- ^a Safety License Present for Children / Wed., Mar. 21 / • 10:00 am - noon , 1:30 pm - 3:30 pm / 1F, Entrance Hall / Participation fee: Free
- ^a Vehicle Land: Playing with Toy Vehicles / Sat., Mar. 24 & Sun., Mar. 25 / 1:00 pm - 4:00 pm / 1F, *Tamokuteki Hall* / Fee: Free
- ^a Astramline Rail Yard Tour / Sun., Mar. 25 / j 10:00 am - 10:40 am k 11:00 am - 11:40 am / Fee: Admission fee for the museum (Adults- ¥510, Seniors & High school students-¥250)
To APPLY: Send an *ofuku-hagaki* (return postcard) with all applicants' names, address, telephone number, age, time (• or ,) you wish to attend and the event name
アストラムライン ^{ちょうらくじしゃりょう き ちけんがくかい} 長楽寺 車両 基地 見 学会
("Astramline Chourakuji sharyo-kichi kengaku-kai") to the museum by Sun., Mar. 11. 60 people will be selected at random by a drawing of names for each time slot.
² Parents with baby buggies, please refrain from participating in the event.
- ^a Ennichi / Mar. 10 (Sat.), 11 (Sun.), 17 (Sat.) & 18 (Sun.) / 10:00 am - 3:00 pm / Around Museum Main Entrance
- ^a Food Corner / Mar. 10 (Sat.), 11 (Sun.), 17 (Sat.) & 18 (Sun.) / 10:00 am - 3:00 pm / Outside of the museum (around Museum Main Entrance)

Ø Hiroshima City Ebayama Museum of Meteorology

(1-40-1 Eba-minami, Naka-ku 730-0835 / 231-0177 / 9:00 am - 5:00 pm / Closed on Mondays & Mar. 22 / Adults-¥100, Seniors & High school students-¥50, Junior High & Elementary school students-Free (Free admission for High school students on Saturdays except during school holidays)
/ <http://www.ebayama.jp/>)

T Science Shows / j 1:30 pm - 2:00 pm
k 3:00 pm - 3:30 pm

- ® Balloons / Sun., Mar. 4 & 11
- ® Amazing Experiments / Mar. 17 (Sat.), 18 (Sun.), 21 (Wed.), 24 (Sat.), 25 (Sun.) & 31 (Sat.)

T Science Workshops / 1:00 pm - 3:30 pm / For junior high school students and under

- ² The first 50 participants will be accepted from 10:00 am on the day.
- ® Roly-poly Cat / Sat., Mar. 3 / Fee: ¥60 for materials
- ® Animal-shaped Rolling Toys / Sat., Mar. 10 / Fee: ¥100 for materials

Please feel free to contact the International Exchange Lounge at 082-247-9715.

E-mail: golounge@pcf.city.hiroshima.jp

March 2018

H Hiroshima City Museum of History and Traditional Crafts

(2-6-20 Ujina-miyuki, Minami-ku 734-0015 / 253-6771 / 9:00 am - 5:00 pm / Closed on Mondays & Mar. 22 / Adults-¥100, Seniors & High school students-¥50, Junior high school students and under-Free

/ <http://www.cf.city.hiroshima.jp/kyodo/>)

P Special Exhibitions:

® **Ujina Port** / Thurs., Feb. 1 - Sun., Mar. 25

® **Everyday Life during the Wart from Comics, "In this Corner of the World"** / Sat., Apr. 14 - Sun., Jul. 8

P Workshops, etc.

® **Make a Bota-mochi, a rice cake covered with anko, bean jam** / Wed., Mar. 21 / 1:00 pm - 3:00 pm / Elementary school students / Fee: ¥200 (Admission fee for the museum is also required.)

² Applications will be accepted by phone or fax between Mar. 1 and 4. 20 people will be selected at random by a drawing of names.

® **Make a Wagashi** (Japanese-style confectionary) / Sat., Apr. 21 / 1:00 pm - 3:00 pm / Elementary school students and their guardians / Fee: ¥300 per person (Admission fee for the museum is also required.)

² Applications will be accepted by phone or fax between Apr. 1 and 5. 10 groups will be selected at random by a drawing of names.

® **Make a Kashiwamochi** (a rice cake stuffed with sweet bean paste and wrapped in an oak leaf) / Sat., Apr. 28 / 1:00 pm - 3:00 pm / Elementary school students / Fee: ¥100

² Applications will be accepted by phone or fax between Apr. 1 and 5. 20 people will be selected at random by a drawing of names.

H Hiroshima City Cinematographic and Audio-Visual Library

(3-1 Moto-machi, Naka-ku 730-0011 / 223-3525 / 10:00am - 8:00pm (Tue.-Sat.), 10:00 am - 5:00 pm (Sun., national holidays & August 6) / Closed on Mondays & Mar. 22 / 35mm Film

Showings Adults-¥510, Seniors & High school students-¥250, Junior high school students and under-Free; **Other Film Showings** Adults-¥380, Seniors & High school students-¥180, Junior high school students and under-Free, Admission free for foreign students (Please show your student ID or the Hiroshima International Center Complimentary Pass.) /

<http://www.cf.city.hiroshima.jp/eizou/>)

• **March Special Showings of Masterpieces of Japanese Film: Kon Ichikawa, a Film Director** (Screened in Japanese only)

I **Admission Fee:** Adults-¥510, Seniors (65 years old and up) & High school students-¥250, Junior high & Elementary school students-Free
« Sat., March 3: Free admission for high school students

¥ Sat., Mar. 3 / j 10:30 am k 2:00 pm
f 6:00 pm

Akuma no temari uta / 悪魔の手毬唄 (1977, Toho Eiga, 143 min., color, 35 mm film) / Director: Kon Ichikawa / Cast: Keiko Kishi, Koji Ishizaka, Tomisaburo Wakayama, Akiko Nishina

¥ Thurs., Mar. 8 / j 10:30 am k 2:00 pm
f 6:00 pm

Sasame yuki / 細雪 (1983, Toho Eiga, 140 min., color, 35 mm film) / Director: Kon Ichikawa / Cast: Keiko Kishi, Yoshiko Sakuma, Sayuri Yoshinaga, Yuko Kotegawa

¥ Fri., Mar. 9 / j 10:30 am k 2:00 pm
f 6:00 pm

Ohan / おはん (1984, Toho Eiga, 112 min., color, 35 mm film) / Director: Kon Ichikawa / Cast: Sayuri Yoshinaga, Koji Ishizaka, Reiko Ohara, Chocho Miyako

¥ Fri., Mar. 23 / j 10:30 am k 2:00 pm
f 6:00 pm

Eiga joyu / 映画女優 (1987, Toho Eiga, 130 min., color, 35 mm film) / Director: Kon Ichikawa / Cast: Sayuri Yoshinaga, Bunta Sugawara, Mitsuko Mori, Kiichi Nakai

¥ Sat., Mar. 24 / j 10:30 am k 2:00 pm
f 6:00 pm

Shiju-shichi nin no shikaku / 四十七人の刺客 (1994, Toho, Nihon Terebi, Suntory, 129 min., color, 35 mm film) / Director: Kon Ichikawa / Cast: Ken Takakura, Kiichi Nakai, Rie Miyazawa, Ruriko Asaoka

¥ Fri., Mar. 30 / j 10:30 am k 2:00 pm
f 6:00 pm

Dora Heita / どら平太 (2000, "Dora Heita" Seisaku linkai, 111 min., color, 35 mm film) / Director: Kon Ichikawa / Cast: Koji Yakusho, Yuko Asano, Bunta Sugawara, Ryudo Uzaki

¥ Sat., Mar. 31 / j 10:30 am k 2:00 pm
f 6:00 pm

Kachan / かあちゃん (2001, "Kachan" Seisaku linkai, 97 min., color, 35 mm film) / Director: Kon Ichikawa / Cast: Keiko Kishi, Ryuji Harada, Tsuyoshi Ujiki, Manae Matsuno



Please feel free to contact the International Exchange Lounge at 082-247-9715.

E-mail: golounge@pcf.city.hiroshima.jp

March 2018

- Taiwanese Cinema (Screened in original language with Japanese subtitles or, in Japanese only)

I Admission Fee: Adults-¥510, Seniors (65 years old and up) & High school students-¥250, Junior high & Elementary school students-Free
 « Sat., March 17: Adults-¥380, Seniors (65 years old and up)-¥180, Senior high, Junior high & Elementary school students-Free

Ÿ Wed., Mar. 14 / j 2:00 pm k 6:00 pm
 悲情城市 / A City of Sadness (1989, Taiwan, 160 min., color, 35 mm film, Japanese subtitles) / Director: Hsiao-Hsien Hou / Cast: Tian-Lu Li, Sung Young Chen, Tony Chiu-wai Leung, Jack Kao

Ÿ Thurs., Mar. 15 / j 2:00 pm k 6:00 pm
 海角七号 / Cape No. 7 (2008, Taiwan, 130 min., color, 35 mm film, Japanese subtitles) / Director: Te-Sheng Wei / Cast: Van Fan, Chie Tanaka, Kosuke Atari, Wen-Yin Liang

Ÿ Fri., Mar. 16 / j 2:00 pm k 6:30 pm
 父後七日 / Seven Days in Heaven (2009, Taiwan, 92 min., color, 35 mm film, Japanese subtitles) / Director: Yu-Lin Wang / Cast: Garance Li-Wen Wang, Pong Fong Wu, Jia-xiang Chen

Ÿ Sat., Mar. 17 / j 10:30 am k 6:00 pm
 那些年，我們一起追的女孩 / You are the Apple of My Eye (2011, Taiwan, 110 min., color, Blu-ray, Japanese subtitles) / Director: Giddens Ko / Cast: Kai Ko, Michelle Chen, Steven Hao, Yen Sheng-yu, Owodog



Please feel free to contact the International Exchange Lounge at 082-247-9715.

E-mail: golounge@pcf.city.hiroshima.jp

March 2018

Recommended Books for This Month



March 2018

こ ん げ つ と し よ
今 月 の お す す め 図 書

March 2018

Assisting with International Cooperation with Used Stamps & PET Bottle Caps

The International Exchange Lounge collects used stamps to assist international cooperation activities. Through the volunteer groups, JOCS*, the collected stamps are sold to collectors to raise money. With the profit, items such as milk and medicine are purchased and doctors as well as nurses are dispatched throughout Asia and other continents. We also collect PET bottle caps in order to support the "Ecocap Action". The sales profits obtained by recycling caps are donated to the Japan Committee "Vaccines for the World's Children" (JCV).

*JOCS: Japan Overseas Christian Medical Cooperative Service

HOW TO COLLECT:

- © **Stamps** ☪ When you cut stamps from envelopes, please leave 5 mm of paper around them. It is not necessary to remove them from the envelope. Torn or folded stamps cannot be accepted.
- © **PET Bottle Caps** ☪ Only PET bottle caps for drinks or mineral water are accepted. Please wash the caps and tear off the sticker if it has one. This is in order to avoid damaging the recycling machines. Things such as metal caps and pull-top tabs cannot be accepted.

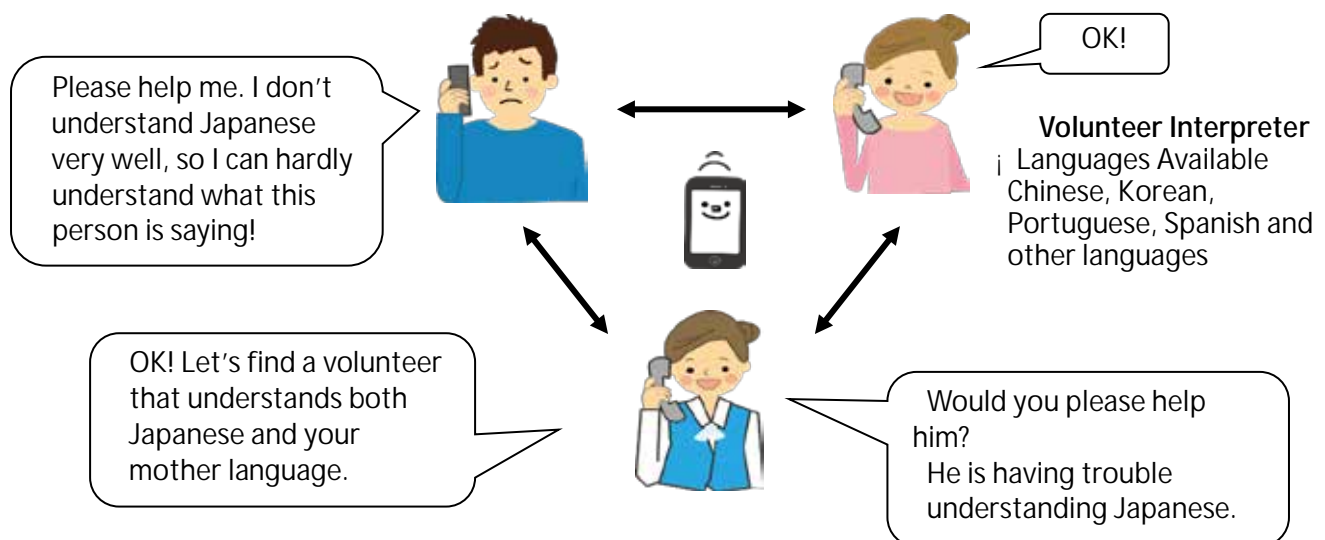
Trio-Phone Service (Multilingual Interpretation over the Telephone)



What is Trio-Phone ?

Trio-Phone Service allows three people to have a conversation at the same time through the telephone. If you are having difficulties communicating in Japanese, call the International Exchange Lounge (082-247-9715).

A volunteer interpreter will help you through the Trio-Phone Service!



For further information, please ask the staff at the International Exchange Lounge.

Please feel free to contact the International Exchange Lounge at 082-247-9715.

E-mail: golounge@pcf.city.hiroshima.jp

March 2018

Garbage Disposal Information

Separate garbage properly and take it to the collection site by 8:30am on the designated day. Please do NOT take garbage to the site on the night before. Garbage collection days vary depending on where you live and the category of the refuse. For further details, consult your local ward office or your neighbors to be sure of the proper disposal method. "Hiroshima 8", a handbook on how to separate garbage, and "Hiroshima City Garbage Disposal Guidelines for the 2017 fiscal year", a garbage chart with schedules of garbage collection days, are available at ward offices, branch offices and community halls. The Handbook and Guidelines are translated into English, Spanish, Portuguese, Chinese and Korean. These are also available at the International Exchange Lounge (International Conference Center Hiroshima), so please ask the staff if you need them.

HIRO CLUB NEWS is published monthly and provides essential and entertaining information about life in Hiroshima City. It is available in print at the International Exchange Lounge, and online at our website: <http://www.pcf.city.hiroshima.jp/ircd/english/hiroclubnews/> Selected information is also available in other languages including Chinese, Portuguese and Spanish.

HIRO CLUB NEWS は広島的生活情報やイベント等の情報を掲載している英語の月刊情報誌です。国際交流ラウンジにて配布しています。当課ホームページにも掲載しています。

英語版の情報の一部を抜粋した中国語・ポルトガル語・スペイン語版も作成しています。

* * * * *

Edited and published by the Hiroshima Peace Culture Foundation

International Affairs Department, International Relations and Cooperation Division

Tel: (082) 242-8879, Fax: (082) 242-7452, E-mail: internat@pcf.city.hiroshima.jp

International Exchange Lounge

Tel: (082) 247-9715, E-mail: golounge@pcf.city.hiroshima.jp

Website: <http://www.pcf.city.hiroshima.jp/ircd/english/index.html>

編集・発行 公益財団法人広島平和文化センター国際部国際交流・協力課 国際交流ラウンジ
〒730-0811 広島市中区中島町 1 番 5 号