

Hiro Club News



Japanese Green Tea 日本茶 :

Tea was originally brought from China to Japan as a medicine, and cultivation of tea is said to have started in the Kamakura period (A.D. 1185 - 1338). The most widely drunk green tea in Japan is *sencha*, made by steaming and then drying leaves, which was conceived in the Edo period and is unique to Japan. Japanese green tea is broadly classified into the types shown below, but depending on when the leaves are picked *sencha* varies in quality, even when the leaves are from the same tree. The first crop of young leaves produces top quality *gyokuro*.

Types of Japanese Green Tea

- ① *Sencha*: Leaves from the second or later crops that are steamed and then dried.
- ① *Matcha*: Powdered tea made from young leaves, used in tea ceremonies.
- ① *Bancha*: Hard leaves and stems from late in the tea-picking season that are steamed and then dried.
- ① *Hojicha*: Tea made with roasted *bancha*.
- ① *Genmaicha*: *Bancha* mixed with roasted rice grains.
- ① *Mugi cha*: This is not made from tea leaves, but from barley leaves that are steamed and then dried.

How to make delicious *sencha*:

- Fill cups with hot water. ① , Put tea leaves in the teapot. ① f Pour the hot water from the cups into the teapot. ① ,, Pour the tea a little at a time until it is all shared out.

(Abstracted from 『不思議の国ニッポン：イラストで目からうろこの日本紹介』 pp. 132-133, IBC パブリッシング)

A *chatsumi* (tea leaf-picking) performance and tea ceremony will be held at Shukkeien Garden on April 30. *Saotome*, girls dressed in traditional costumes, will demonstrate an old-fashioned way of tea leaf-picking. Freshly-picked tea will be served for free (see the [Seasonal Event Information](#) section for more information).

April 2018

April 2018

- ✓ City Office Notices
- ✓ Hiroshima Peace Culture Foundation News
- ✓ Movie Theaters
- ✓ Bilingual TV Programs
- ✓ Concerts & Plays
- ✓ Museums
- ✓ Sports
 - Hiroshima Toyo Carp Schedule 2018
 - Sanfrecce Hiroshima FC Game Schedule 2018
 - Hiroshima Dragonflies 2017 – 2018 B2 League
- ✓ Events
 - Seasonal Event Information
 - Municipal Facilities
- ✓ Lounge & Library
 - Library News
 - Trio-phone Service (multilingual interpretation using the telephone)
 - Garbage Disposal

**Hiroshima Peace Culture Foundation
International Exchange Lounge**

1-5 Nakajima-cho, Naka-ku, Hiroshima 730-0811

E-mail: golounge@pcf.city.hiroshima.jp

Tel. 082-247-9715 Fax. 082-242-7452

« Visit the HIRO CLUB NEWS WEBSITE for information online. «
URL: <http://www.pcf.city.hiroshima.jp/ircd/joho/hiroclub%2001.html>



City Office Notices

City Office Notices contains selected information from the Hiroshima City Newsletter, *ひろしま市民と市政 Hiroshima Shimin to Shisei*. City Office Notices is published twice a month and available in print at the International Exchange Lounge, and online at our website: <http://www.pcf.city.hiroshima.jp/ircd/english/hiroclubnews/>

April 1, 2018

Topics

- ✿ FISE World Series Hiroshima 2018
- ✿ Hiroshima Peace Camp Volunteer
- ✿ Financial Help for Families Moving into a Vacant Houses
- ✿ Kurashi Support Center
- ✿ Use A Child Car Seat and Drive Safe!

FISE World Series Hiroshima 2018

– Hiroshima City Will Host 3 International Sports Events in 2018

国際大会が続々開催 今年も熱いぞ！スポーツ王国広島 FISE Hiroshima 2018(P1)

Starting with FISE World Series, Hiroshima City will host sports events throughout the year.

FISE World Series Hiroshima 2018

The Festival International des Sports Extrêmes (FISE) World Series Hiroshima will be held in Hiroshima from Friday, April 6 to Sunday, April 8.

PLACE: The Open Space of the Former Municipal Baseball Stadium, Moto-machi, Naka-ku

ACCESS: Get off at Kamiya-cho-nishi or Genbaku Dome-mae Streetcar Stops.

ADMISSION FEE: Free admission

NOTE: Visitors will be required to register to enter the venue.

SPORTING EVENTS: BMX Freestyle Park, BMX Freestyle Flatland, Skateboard Street, Parkour, Bouldering, Roller Freestyle & Breakdancing

URL: <http://www.fisehiroshima.jp>

Japan Women's Open Tennis 2018

WHEN: From Monday, September 10 to Sunday, September 16

PLACE: Koiki-koen Tennis Court (Asaminami-ku)

2018 Hansa Class World Hiroshima (A World Sailing Championship)

Championships are held biannually, and most of the competitors at this championship are sailors with disabilities.

WHEN: From Friday, October 12 to Thursday, October 18

PLACE: Kannon Marina (Nishi-ku)

NHK Trophy Grand Prix of Figure Skating

WHEN: From Friday, November 9 to Sunday, November 11

PLACE: Hiroshima Prefectural Gymnasium (Hiroshima Green Arena) (Naka-ku)

INQUIRIES: Sports *Shinko Ka* (Sports Promotion Division)

Tel. 504-2504 Fax. 504-2066

Hiroshima Peace Camp Volunteers

ヒロシマピースキャンプ運営ボランティア募集(P5)

From Saturday, August 4 to Tuesday, August 7, a camp site will be temporarily created at Hiroshima City University (Ozukahigashi, Asaminami-ku) for visitors coming to Hiroshima to attend the Peace Memorial Ceremony. The City Hall is seeking volunteer staff to help organize exchange events for the visitors at the camp site.

WHO: 18 years or older, excluding senior high school students

ACTIVITY PERIOD: From Thursday, May 10 to Tuesday, August 7

EXPLANATORY MEETING: Applicants must attend one of the following explanatory meetings held as follows:

DATE&TIME: Wednesday, April 25, from 7:00 pm

Thursday, May 10, from 6:00 pm

Saturday, July 14, from 11:00 am

PLACE: *Gojinsha Hito Machi Plaza* (6-36 Fukuro-machi, Naka-ku)

TO APPLY: Contact *Shimin Katsudo Suishin Ka* (Citizens Activities Promotion Division), or you can apply online at Hiroshima City Hall's website (<http://www.city.hiroshima.lg.jp/>).

INQUIRIES: *Shimin Katsudo Suishin Ka* (Citizens Activities Promotion Division)
Tel. 504-2677 Fax. 504-2066

Financial Help for Families Moving into a Vacant Houses

子育て世帯の住み替えに補助金を交付(P2)

The City hall supports families with small children moving into vacancies in housing estates as part of a housing estate revitalizing project. Renovation expenses or rent expenses for eligible houses in designated housing estates will be subsidized as follows. For details about eligibility requirements and applications, please inquire at *Jutaku Seisaku Ka*.

SUBSIDY AMOUNT:

1. Half of the renovation expenses for an eligible house. Up to 500,000 yen. 7 households will be selected by lot.
2. Half of the rent expense for an eligible house. Up to 20,000 yen/month for maximum 24 months. 3 households will be selected by lot.

TO APPLY: Submit a prescribed application form to *Jutaku Seisaku Ka*. Applications are available at *Chiiiki Okoshi Suishin Ka* in ward offices, *Jutaku Seisaku Ka* or online at Hiroshima City Hall's website: <http://www.city.hiroshima.lg.jp/>.

INQUIRIES: *Jutaku Seisaku Ka* (Housing Policy Division)
Tel. 504-2292 Fax. 504-2308

Kurashi Support Center

Helping you have a life of stability and independence

各区暮らしサポートセンター相談窓口(P2)

The Hiroshima City *Kurashi* Support Center helps Hiroshima City residents who have trouble with living costs, family issues or other problems. In addition to the present center, more centers have opened in April, accordingly, *Kurashi* Support Centers are located in all wards in Hiroshima City. Please take advantage of their support services to help get your life back on track. Please contact directly the center in your local ward by phone (available in Japanese, only), fax (264-6413) or email (kurasapo@shakyohiroshima-city.or.jp).

With the support of a special counselor who is a certified social welfare worker, you can come up with a plan that will help you overcome your problems including finding jobs, housing, managing family finances, children's education, and so forth.

INQUIRIES:**On the system of *Kurashi* Support Centers:***Chiiki Fukushima Ka* (Community Welfare Division)

Tel. 504-2799 Fax. 504-2169

On services at *Kurashi* Support Centers:

Ward	Location	Telephone	Fax Email
Naka	<i>Naka-ku Chiiki Fukushima Center</i> (4-1-1 Otemachi, Naka-ku)	545-8388	Fax: 264-6413 Email: kurasapo@shakyohiroshima-city.or.jp
Higashi	<i>Higashi-ku Sogo Fukushima Center</i> (9-34 Higashikaniya-cho, Higashi-ku)	568-6887	
Minami	Minami Ward Office Annex (1-4-46 Minamimachi, Minami-ku)	250-5677	
Nishi	<i>Nishi-ku Chiiki Fukushima Center</i> (2-24-1 Fukushima-cho, Nishi-ku)	235-3566	
Asaminami	<i>Asaminami-ku Sogo Fukushima Center</i> (1-38-13 Nakasu, Asaminami-ku)	831-1209	
Asakita	<i>Asakita-ku Sogo Fukushima Center</i> (3-19-22 Kabe, Asakita-ku)	815-1124	
Aki	<i>Aki-ku Sogo Fukushima Center</i> (3-2-16 Funakoshi-minami, Aki-ku)	821-5662	
Saeki	Saeki Ward Office Annex (1-4-5 Kairoen, Saeki-ku)	943-8797	

Use A Child Car Seat and Drive Safe!

正しく取り付け安心ドライブ(『市民と市政』2018.3.15 P1)

Children riding in a car must use a child car seat until they are 6 years old according to the law. Please choose the right child car seat based on your child's age and weight and use it correctly. In a crash at 40km per hour, the car crash force is 30 times of the passenger's body weight. If you were holding a child 10 kg in a car crash, the crash force would be 300 kg, which means you would be unable to keep a hold of your child securely.

INQUIRIES: *Doro Kanri Ka* (Road Management Division) Tel. 504-2122 Fax. 504-2379**Child Car Seat Installation Lesson****FREE OF CHARGE****WHO:** Those who are residents of Hiroshima City**DATE&TIME:** The 1st Mondays 10:30 am – 11:10 am, of every month.
and the 3rd Thursdays 2:00 pm – 2:40 pm, of every month.**PLACE:** *Kotsu* Land, Oshiba Park (1-50 Oshiba-koen, Nishi-ku)**TO RESERVE:** Apply online at Hiroshima City Hall's website(http://www.city.hiroshima.lg.jp/www/contents/1197018310882/index.html) or send prescribed application postcards to *Doro Kanri Ka*. The application postcards are available at the *Doro Kanri Ka* (Road Management Division), or *Chiiki-okoshi Suishin Ka* of your local ward office, branch office.

Hiroshima Peace Culture Foundation News

Event schedules are subject to change. Please contact event organizers to confirm listed information.

April 2018

CIR Question & Answer Day

Are you looking for advice about Hiroshima?

Come in for a chat with our CIR, Andrew Dempster!

DATE & TIME: Wednesday, April 25 1:30 pm – 3:30 pm

PLACE: International Exchange Lounge

(International Conference Center Hiroshima 1F, 1-5 Nakjima-cho, Naka-ku)

RESERVATIONS ARE REQUIRED: Reservations can be made in person or by telephone at the International Exchange Lounge Tel. 247-9715 (Lounge open hours 9:00 am – 7:00 pm)

INQUIRIES: International Exchange Lounge, International Relations and Cooperation Division, Hiroshima Peace Culture Foundation Tel. 247-9715

New Arrivals Exhibit – Hiroshima Peace Memorial Museum

Even today, the Hiroshima Peace Memorial Museum receives donations including items left by the deceased: various documents, pictures and photographs depicting the disaster of the atomic bombing, which were preserved by the A-bomb victims and their bereaved families with utmost care.

In the last fiscal year (April 2016 – March 2017), 638 items were donated. Of these, 124 items are exhibited in this exhibition.

PERIOD: Friday, March 30, 2018 – Friday, March 1, 2019

PLACE: Temporary Exhibition Room, B1F, East Building of Hiroshima Peace Memorial Museum

ADMISSION: Free

INQUIRIES: Curatorial Division, Hiroshima Peace Memorial Museum Tel. 241-4004 Fax. 542-7941
<http://hpmmuseum.jp/?lang=eng>

Video Screening and A-bomb Legacy Successor's Talk

Hiroshima Peace Memorial Museum

Open to the public, no reservations required. Please feel free to drop by!

Video "HIROSHIMA - Message from Hibakusha"

This is a current video produced in accordance with the East Building's reopening. Approx. 22 min. Provided with English subtitles.

SCHEDULE:

8:45 am-	9:15 am-	9:45 am-	10:15 am-	*
3:15 pm-	3:45 pm-	4:15 pm-	4:45 pm-	5:15 pm-

*11:00 am - 3:00 pm: A-bomb
Legacy Successor's Talk

A-bomb Legacy Successor's Talk

A-bomb Legacy Successors have taken over the A-bomb survivor's experience and give testimony on their behalf. A-bomb Legacy Successors offer lectures in which they present the A-bomb survivors' experiences, the reality of the atomic bombing, and desires for peace. Approx. 60 min.

SCHEDULE: 11:00 am (Japanese), 12:30 pm (Japanese), 2:00 pm (English)

PLACE: Video Theater, 1F, East Building of Hiroshima Peace Memorial Museum

ADMISSION: Free

INQUIRIES: Curatorial Division, Hiroshima Peace Memorial Museum Tel. 241-4004 Fax. 542-7941
<http://hpmmuseum.jp/?lang=eng>



The **International Conference Center Hiroshima** is used for various purposes such as exhibitions and parties. Its large auditorium, which can accommodate 1,504 people, is ideal for concerts, lectures, and domestic and international conferences. The ICCH also includes the International Conference Hall, as well as small, medium, and large conference rooms. In all, the ICCH has five floors, three above ground and two basement floors.

Tel. 242-7777 (9:00 am – 9:00 pm) URL: <http://www.pcf.city.hiroshima.jp/icch/english.html>

Please feel free to contact to the International Exchange Lounge at 082-247-9715.

E-Mail: golounge@pcf.city.hiroshima.jp

April 2018

Movie Theaters

April 2018



Here is a general list of movies being shown in theaters around Hiroshima. Due to unpredictable changes in scheduling, listings are subject to change without notice. Foreign films are usually in their original language with Japanese subtitles. When not specified, the admission is **¥1,800** for adults. Theaters offer various kinds of admission discount services, so please inquire at each theater for more information.

SALON CINEMA

[Hiroshima Toei Plaza Bldg. 8F, 16-10 Hatchobori, Naka-ku / Tel: 082-962-7772 / URL: <http://www.johakyu.co.jp/>]

- Until Apr. 13 **Three Billboards Outside Ebbing, Missouri** / '17 UK, USA
- Until Apr. 20 **The Greatest Showman** / '17 USA
- From Mar. 1 **The Shape of Water** / '17 USA
- Mar. 30 – Apr. 6 **The Leisure Seeker** / '17 Italy, France
- Mar. 31 – Apr. 6 **Jupiter Holdja** / '17 Hungary, Germany
- Mar. 31 – Apr. 13 **Mein Blind Date Mit Dem Leben** / '17 Germany
- Mar. 31 – Apr. 6 **Nocturnal Animals** / '16 USA
- Apr. 7 – 20 **The Big Sick** / '17 USA
- Apr. 7 – 27 **Una Mujer Fantastica** / '17 Chile, Germany, Spain, USA
- Apr. 14 – 27 **Happy End** / '17 France, Germany, Austria
- Apr. 14 – 27 **3 Generations** / '15 USA
- From Apr. 21 **Dangal** / '16 India
- From Apr. 21 **Maudie** / '16 Canada, Ireland

HATCHOZA

[Fukuya Department Store Hatchobori 8F, 6-26 Ebisu-cho, Naka-ku / Tel: 082-546-1158 / URL: <http://www.johakyu.co.jp/>]

- From Feb. 16 **The Greatest Showman** / '17 USA
- From Mar. 30 **The Post** / '17 USA
- From Apr. 14 **The Secret Scripture** / '16 Ireland
- From Apr. 27 **Call Me by Your Name** / '17 Italy, France, Brazil, USA

YOKOGAWA CINEMA

Tel : 231-1001
[3-1-12 Yokogawa-cho, Nishi-ku / Tel: 082-231-1001 / URL: <http://yokogawa-cine.jugem.jp/>]

- Apr. 1 – 14 **長江図** / **Crosscurrent** / '16 China

- Apr. 1 – 14 **Le Lion est Mort ce Soir** / '17 France, Japan
- Apr. 1 – 7 **Zashchitniki** / '17 Russia
- Apr. 8 – 21 **52Hz, I Love You** / '17 Taiwan
- Apr. 8 – 22 (except Apr. 15) **目撃者之追凶** / **Who Killed Cock Robin** / '17 Taiwan
- Apr. 8 – 14 **The Assignment** / '16 USA
- From Apr. 15 **苦錢** / **Bitter Money** / '16 France, Hong Kong
- From Apr. 15 **The Killing of a Sacred Deer** / '17 UK, Ireland

AEON CINEMA HIROSHIMA

[Hiroshima Danbara Shopping Center 6F, 1-3-52 Danbara-minami, Minami-ku / Tel : 082-261-3770 / URL: <http://www.aeoncinema.com/cinema/hiroshima/>]

- From Feb. 16 **The Greatest Showman** / '17 USA
- From Apr. 6 **Jumanji: Welcome to the Jungle** / '17 USA
- From Apr. 13 **Pacific Rim Uprising** / '18 USA
- From Apr. 20 **Ready Player One** / '18 USA
- From Apr. 27 **Avengers: Infinity War** / '18 USA

109 CINEMAS

[Alpark 3F (north bldg.), 4-7-1 Kusatsu-minami, Nishi-ku / Tel: 05700-002-109 / URL: <http://www.109cinemas.net/Hiroshima>]

- From Feb. 16 **The Greatest Showman** / '17 USA
- From Mar. 1 **Black Panther** / '18 USA
- From Mar. 1 **The Shape of Water** / '17 USA
- From Mar. 1 **The 15.17 to Paris** / '18 USA
- From Mar. 21 **Tomb Raider** / '17 USA
- From Mar. 30 **The Post** / '17 USA
- From Mar. 30 **Valerian and the City of a Thousand Planets** / '17 France
- From Mar. 30 **Red Sparrow** / '18 USA
- From Apr. 6 **Jumanji: Welcome to the Jungle** / '17 USA
- From Apr. 13 **Pacific Rim Uprising** / '18 USA

Please feel free to contact the International Exchange Lounge at 082-247-9715.

E-mail: golounge@pcf.city.hiroshima.jp

April 2018

TOHO CINEMAS MIDORII

[Fuji Grand 3F, 1-5-2 Midorii, Asaminami-ku / Tel : 082-831-8060 / URL: <http://www.tohotheater.jp/>]
 Adults-¥1,800, University students-¥1,500, From preschoolers (3 years old and under) to High school students-¥1,000,

From Feb. 16 **The Greatest Showman / '17 USA**
 From Mar. 1 **The 15.17 to Paris / '18 USA**
 From Mar. 1 **The Shape of Water / '17 USA**
 From Mar. 1 **Black Panther / '18 USA**
 From Mar. 21 **Tomb Raider / '17 USA**
 From Mar. 30 **The Post / '17 USA**
 From Mar. 30 **Valerian and the City of a Thousand Planets / '17 France**
 From Mar. 30 **Red Sparrow / '18 USA**
 From Mar. 30 **The Commuter / '18 USA, UK**
 From Apr. 6 **Jumanji: Welcome to the Jungle / '17 USA**
 From Apr. 13 **Pacific Rim Uprising / '18 USA**

HIROSHIMA WALD 11

[AEON Mall Hiroshima Fuchu 4F, 2-1-1 Osu, Fuchu-cho, Aki-gun / Tel : 082-561-0600 / URL: <http://kinezo.jp/pc/wald11>]

From Feb. 16 **The Greatest Showman / '17 USA**
 From Feb. 24 **妖猫傳 / '18 Japan, China**
 From Mar. 1 **Black Panther / '18 USA**
 From Mar. 1 **The 15.17 to Paris / '18 USA**
 From Mar. 21 **Tomb Raider / '17 USA**
 From Mar. 30 **The Commuter / '18 USA, UK**
 From Mar. 30 **The Post / '17 USA**
 From Mar. 30 **Red Sparrow / '18 USA**
 From Mar. 30 **Valerian and the City of a Thousand Planets / '17 France**
 From Apr. 6 **Jumanji: Welcome to the Jungle / '17 USA**
 From Apr. 13 **Pacific Rim Uprising / '18 USA**
 From Apr. 20 **Ready Player One / '18 USA**
 From Apr. 27 **Avengers: Infinity War / '18 USA**

T-JOY HIGASHI HIROSHIMA

[Fuji Grand Higashi Hiroshima 3F, 4405 Misonou, Saijo-cho, Higashi Hiroshima-shi / Tel : 082-493-6779 / URL: http://kinezo.jp/pc/t-joy_hiroshima]

From Feb. 16 **The Greatest Showman / '17 USA**
 From Mar. 1 **Black Panther / '18 USA**
 From Mar. 1 **The 15.17 to Paris / '18 USA**
 From Mar. 21 **Tomb Raider / '17 USA**
 From Mar. 30 **The Post / '17 USA**
 From Apr. 6 **Jumanji: Welcome to the Jungle / '17 USA**
 From Apr. 13 **Pacific Rim Uprising / '18 USA**
 From Apr. 20 **Ready Player One / '18 USA**
 From Apr. 27 **Avengers: Infinity War / '18 USA**



Please feel free to contact the International Exchange Lounge at 082-247-9715.

E-mail: golounge@pcf.city.hiroshima.jp

April 2018

Bilingual TV Programs



April 2018

#1: NHK Sogo	#4: Hiroshima TV
#2: NHK E Tele	#5: Home TV
#3: RCC	#8: TSS

² Some changes may occur because of special programming.

NEWS

Monday - Sunday

NHK News 7 / 7:00 pm – 7:30 pm (#1)

Monday - Friday

News Watch 9 / 9:00 pm – 10:00 pm (#1)

² Except the 30th

REGULAR PROGRAMS

Tuesday

Design Talks +plus / 11:00 pm – 11:30 pm (#2) ² From the 3rd

Friday

Documentary Programs / 10:00 pm – 10:50 pm (#2) ² From the 6th

Saturday

Dramatic Earth (Documentary Program) / 7:00 pm – 7:45 pm (#2)

² Rerun: Mon., midnight – 12:45 am

DRAMAS

Monday

Hawaii Five-0 Season 2 ('11 USA) / 1:25 am – 2:20 am (#4) ² The 2nd: 1:30 am – 2:25 am; the 23rd: 1:50 am – 2:45 am

Friday

The Thundermans Season 3 ('15 USA) / 7:25 pm – 7:50 pm (#2)

Saturday

Game Shakers ('15 USA) / 6:25 pm – 6:50 pm (#2) ² From the 7th

Sunday

オクニヨ ('16 South Korea) / 11:00 pm – midnight (#2) ² From the 8th

ANIMATIONS

Saturday

Curious George / 8:35 am – 9:00 am (#2)

SpongeBob SquarePants / 6:00 pm – 6:25 pm (#2)

Sunday

Thomas & Friends / 5:30 pm – 5:50 pm (#2)

MOVIES

7th Jumanji / '95 USA / 1:20 am – 3:17 am (#3)

8th Zathura / '05 USA / 1:15 am – 3:07 am (#3)

14th Inhale / '10 USA / 1:54 am – 3:36 am (#3)

15th Catch Me If You Can / '02 USA / 2:08 am – 4:00 am (#3)

21st Return to Sender / '15 USA / 2:15 am – 4:15 am (#3)

22nd Heartbreakers / '01 USA / 2:05 am – 3:55 am (#8)

29th Into the Blue / '05 USA / 1:50 am – 3:45 am (#8)

SPORTS

© Golf

i 2018 Masters Tournament (#3)

² Broadcasted in Japanese only

5th 11:56 pm – 1:25 am

6th 4:00 am – 8:17 am

7th 12:20 am – 1:20 am & 4:00 am – 8:00 am

8th 12:15 am – 1:15 am & 4:30 am – 8:30 am

9th 12:15 am – 8:22 am

© Football

i AFC Women's Asian Cup Jordan 2018

(#5) ² Broadcasted in Japanese only

7th Japan x Vietnam / 10:35 pm – 12:45 am

10th Japan x Korea Republic / 10:40 pm – 12:45 am

13th Japan x Australia / 10:40 pm – 12:45 am

© Boxing

i WBA World Middleweight Championship:

Ryota Murata (JP) x Emanuele Felice Blandamura (IT) (#8)

² Broadcasted in Japanese only

15th 7:57 pm – 10:00 pm

© MLB (#1)

i New York Yankees x Detroit Tigers

15th 2:00 am – 5:00 am

16th 2:00 am – 4:02 am



Please feel free to contact to the International Exchange Lounge at 082-247-9715.

E-Mail: golounge@pcf.city.hiroshima.jp

April 2018

Concerts & Plays



Ticket Offices

- j EDION Play Guide (SUNMALL, 1F) (Kamiya-cho, Naka-ku; Tel. 247-5111)
- k YAMAHA Music (Kamiya-cho, Naka-ku; Tel. 244-3779 Closed on the 1st & the 3rd Wednesdays)
- l Hiroshima Yume Plaza (Hondori, Naka-ku; Tel. 544-1122 Closed on Wednesdays)
- m Kawai Hiroshima (2-2-6 Kamiya-cho, Naka-ku; Tel. 243-9291 Closed on Mondays)
- n Fukuya Department Store, Hatchobori (7F) (Ebisu-cho, Naka-ku; Tel. 246-6111)
- o Fukuya Department Store, Hiroshima Station (7F) (Matsubara-cho, Minami-ku; Tel. 568-3111)
- p Alpark Tenmaya (3F) (Inokuchi-myojin, Nishi-ku; Tel. 501-1111)
- q Hiroshima Arts Gakki (Hatchobori, Naka-ku; Tel. 227-6601)

Date / Starting Time (Opening Time) / Venue / Ticket Price / Tickets Go on Sale Date / Ticket Offices / Inquiries

♪ Event schedules are subject to change.

Please contact the event office before you go. ♪

April

€ Sunao Saka Violin Recital

8th Sun. / 3:00 pm (2:30 pm) / JMS Aster Plaza / ¥500 (all non-reserved seats) ² Tickets will not be sold on the concert day. / Now on sale / • / Sunao Saka Violin Recital Office 090-7505-0285

¥4,200 Students-¥1,500 (Student tickets are only sold at the Hiroshima Symphony Orchestra Office.) / Now on sale / j , n o t ^ , Lawson, Ticket PIA, Chugoku Shimbun & Hiroshima Symphony Orchestra Office / Hiroshima Symphony Orchestra Office 082-532-3080 E-mail: info@hirokyo.or.jp
- Conductor: Tatsuya Shimono / Piano: André Laplante

€ Berlin Komische Oper: Die Zauberflöte (by W. A. Mozart)

11th Wed. / ☐ 2:00 pm (1:15 pm) • 7:00 pm (6:15 pm) / Hiroshima Bunka Gakuen HBG Hall / S-¥26,000 A-¥21,000 B-¥17,000 C-¥13,000 D-¥9,000 SS-¥32,000 / Now on sale / • , Lawson, Seven-Eleven, FamilyMart, CircleK Sunkus, Ticket PIA / Kyodo Nishinohon 092-714-0159 (weekdasy., 10 am – 7 pm; Sat., 10 am – 5 pm)

€ "Mezamashi Classics" in Kure

15th Sun. / 3:00 pm (2:30 pm) / Kure City Bunka Hall / S-¥5,500 A-¥4,500 / Now on sale / Lawson, Ticket PIA, e+, Seven-Eleven, • † / TSS Event Office 082-253-1010 (weekdays, 10 am – 6 pm); Kure City Bunka Hall 0823-25-7878

€ The 2nd Keiko Abe International Junior Marimba Music Festival in Hiroshima

15th Sun. / 2:00 pm – 4:00 pm (1:30 pm) / Hiroshima Kenmin Bunka Center / Advance-¥2,500 At the door-¥2,900 (all non-reserved seats) / Now on sale / • , Hatsukaichi Bunka Hall Sakurapia, Hiroshima Kenmin Bunka Center / 080-1903-6067 (Inoue) - Performers: Benjamin Hellert (USA), Steije Maurer (Netherlands) & Hiroshima Junior Marimba Ensemble (Japan)

€ Smiley & the Underclass: Japan 1st Tour 2018

18th Wed. / 7:00 pm (6:00 pm) / Hiroshima Club Quattro / Advance-¥3,500 At the door-¥4,000 / Now on sale / e+, Ticket PIA, Lawson, • , Tower Records Hiroshima, Stereo Records / Hiroshima Club Quattro 082-542-2280

NEW!

€ Yamaha Salon Concert 2018: Nana Sumimura Piano Recital

22nd Sun. / 3:00 pm (2:30 pm) / Yamaha Music Hiroshima, 7F / ¥1,000 (40 seats) / Now on sale / , / Hiroshima Summer Concert Executive Committee 0829-39-6902 (Kojima)

NEW!

€ Hiroshima Symphony Orchestra: The 379th Subscription Concert

(Mozart: Piano Concerto No. 12 in A major, K. 414 (385p); Bruckner: Symphony No. 6 in A major (First Edition))
15th Sun. / 3:00 pm (2:00 pm) / Hiroshima Bunka Gakuen HBG Hall / S-¥5,200 A-¥4,700 B-

€ Chor Blume: The 11th Concert

28th Sat. / 2:00 pm (1:30 pm) / Hiroshima Kenmin Bunka Center / ¥900 / Please ask the concert organizer for ticket office information. / 090-4140-3569 (Yamanoue)

Please feel free to contact the International Exchange Lounge at 082-247-9715.

E-mail: golounge@pcf.city.hiroshima.jp

April 2018

May€ **LA LA LAND in Concert Hiroshima**

1st Tue. / 7:00 pm (6:15 pm) / Hiroshima Bunka Gakuen HBG Hall / S-¥9,800 A-¥7,800 / Now on sale / Ticket PIA, Lawson, e+ / HOME Event Center 082-221-7116 (weekdays, 10 am – 5 pm)

€ **Cembalo & Saxophone Concert****NEW!!**

3rd Thurs. / 2:00 pm (1:30 pm) / Higashi Kumin Bunka Center / Adults-¥2,500 High school students and under-¥1,500 / Now on sale / • , Higashi Kumin Bunka Center / 090-7508-2012 (Oda)

€ **Mandolin Ensemble Regina:
The 8th Concert**

4th Fri. / 1:30 pm (1:00 pm) / Higashi Kumin Bunka Center / Free admission / 090-3174-4305 (Yasui)

€ **The 35th Anniversary of Tokyo Disney
Resort: "Happiest Celebration!" in Concert****NEW!!**

4th Fri. / 5:00 pm (4:30 pm) / Hiroshima Bunka Gakuen HBG Hall / S-¥8,500 A-¥7,500 / Now on sale / Lawson, Ticket PIA, e+, CN Play Guide, Seven-Eleven, Rakuten Ticket, • / Yumebanchi Hiroshima 082-249-3571 (weekdays, 11 am – 7 pm)

€ **Special Concert 2018 in Hiroshima**

4th Fri. / 6:30 pm (6:00 pm) / Elisabeth University of Music, Cecilia Hall / Adults-¥2,000 Students-¥800 / Please ask the concert organizer for ticket office information. / 082-287-0380 (Takemoto)

€ **Ancoro Mochi: The 1st Concert**

6th Sun. / 2:00 pm (1:30 pm) / Nishi Kumin Bunka Center / Free admission / 082-548-0722 (Matsushita)

€ **Hiroshima Symphony Orchestra:
Bouquet of Music HSO Masterpiece Concert
~ Spring ~**

(Richard Strauss: *Horn Concerto No. 1 in E-flat major, Op. 11, TrV117*; Smetana: *Ma vlast, ~Vlasta*; Tchaikovsky: *Symphony No. 5 in E minor, Op. 64*)
12th Sat. / 3:00 pm (2:00 pm) / International Conference Center Hiroshima, Phoenix Hall / S-¥4,200 Pair tickets (S seats)-¥6,400 A-¥3,200 B-¥2,200 Students-¥1,500 (Student tickets are only sold at the Hiroshima Symphony Orchestra Office.) / Now on sale / j , n o † ^ , Lawson, Ticket PIA, Chugoku Shimbun & Hiroshima Symphony Orchestra Office / Hiroshima Symphony Orchestra Office 082-532-3080 E-mail: info@hirokyo.or.jp
- Conductor: Masaru Kumakura
Horn: Alessio Allegrini

€ **Kalani Pe'a Hawaiian Concert**

12th Sat. / 4:30 pm (4:00 pm) / Hatsukaichi Bunka Hall Sakurapia / High school students and under-¥5,000 Junior high school students and under-¥2,500 / Now on sale / • , Ticket PIA, Lawson, Sakurapia / Hatsukaichi Bunka Hall Sakurapia 0829-20-0111

€ **Charles Richard-Hamelin Piano Recital:
All Chopin Program**

13th Sun. / 2:00 pm (1:30 pm) / Hatsukaichi Bunka Hall Sakurapia / ¥4,500 / Now on sale / • † ‡ , Sakurapia, Lawson, Ticket PIA / Hatsukaichi Bunka Hall Sakurapia 0829-20-0111 (9 am – 7 pm, closed on Mondays); HOME Event Center 082-221-7116 (weekdays, 10 am – 5 pm)

€ **Flute Quartet Bacc-Quar Concert Vol. 8**

15th Tue. / 6:45 pm (6:15 pm) / Higashi Kumin Bunka Center / Advance: Adults & University students-¥2,000 High school students and under-¥1,000; At the door: Adults & University students-¥2,500 High school students and under-¥1,500 / Please ask the concert organizer for ticket office information. / 090-9464-3840 (Neishi)

€ **God Save the Queen Japan Tour Hiroshima**

18th Fri. / 7:00 pm (6:15 pm) / Hiroshima Club Quattro / ¥6,600 / Now on sale / • † , Ticket PIA, Lawson, Seven-Eleven, e+ / HOME Event Center 082-221-7116 (weekdays, 10 am – 5 pm)

€ **Hiroshima Happy New Ear 25:
Music as Witchcraft**

18th Fri. / 7:00 pm (6:30 pm) / JMS Aster Plaza / Advance: Adults-¥2,500 Students-¥1,500; At the door: Adults-¥3,000 Students-¥2,000 / Now on sale / • † , Ticket PIA, Lawson, Chugoku Shimbun, JMS Aster Plaza / Hiroshima Opera and Music Promotion Committee 082-244-8000

€ **Hiroshima Symphony Orchestra:
The 380th Subscription Concert**

(Leonard Bernstein's 100th Anniversary
Bernstein: Candide, Overture; Bernstein: Serenade for Solo Violin, Strings, Harp and Percussion; Bernstein: Symphony No. 2 "The Age of Anxiety")
25th Fri. / 6:45 pm (5:45 pm) / Hiroshima Bunka Gakuen HBG Hall / S-¥5,200 A-¥4,700 B-¥4,200 Students-¥1,500 (Student tickets are only sold at the Hiroshima Symphony Orchestra Office.) / Now on sale / j , n o † ^ , Lawson, Ticket PIA, Chugoku Shimbun & Hiroshima Symphony Orchestra Office / Hiroshima Symphony Orchestra Office 082-532-3080 E-mail: info@hirokyo.or.jp
- Conductor: Kazuyoshi Akiyama
Violin: Soichi Sakuma / Piano: Sara Davis Buechner

Please feel free to contact the International Exchange Lounge at 082-247-9715.

E-mail: golounge@pcf.city.hiroshima.jp

April 2018

NEW!

€ KONISHIKI Hawaiian Concert

26th Sat. / ☐ 2:00 pm (1:30 pm) • 6:00 pm (5:30 pm) / Hiroshima Kenmin Bunka Center / ¥3,800 (all non-reserved seats) / Now on sale / • †, Ticket PIA / Green Concert Hiroshima 082-241-8868

€ Live Green 2018

27th Sun. / 1:00 pm – 5:00 pm (noon) / Honganji Temple Hiroshima Betsuin / Advance-¥3,000 At the door-¥3,500 (all non-reserved seats) ² Free admission for one child (elementary school student and under) with his/her guardian (¥500 for each extra child) / Now on sale / Ticket PIA, Seven-Eleven, Lawson, • † / RCC 082-222-1133 (weekdays, 10 am – 5 pm)

- Live Act: Kazumi Nikaido and others
This is a music event held at a temple. A talk show, workshops, cafés & a marché (food market) will also be held. This is a rain-or-shine event.

NEW!

€ Hiroshima String Players: The 15th Concert

27th Sun. / 2:00 pm (1:30 pm) / Nishi Kumin Bunka Center / Free admission / 090-6410-6019 (Komoto)

€ Dansu 2018

31st Thurs. / 7:00 pm (6:30 pm) / JMS Aster Plaza / ¥6,000 / Now on sale / Lawson, Ticket PIA, e+, Seven-Eleven, • , JMS Aster Plaza / TSS Office 082-253-1010 (weekdays, 10 am – 6 pm)

- Contemporary dance performance

June

€ Hiroshima Symphony Orchestra: The 381st Subscription Concert

(Zandonai: *Il flauto notturo, for Flute and Orchestra*;
Mozart: *Flute Concerto No. 1 in G major, K. 313 (285c)*;
Tchaikovsky: *Symphony No. 4 in F major, op. 36*)

8th Fri. / 6:45 pm (5:45 pm) / Hiroshima Bunka Gakuen HBG Hall / S-¥5,200 A-¥4,700 B-¥4,200 Students-¥1,500 (Student tickets are only sold at the Hiroshima Symphony Orchestra Office.) / From Sun., April 8 (from Mon., April 9 at the Hiroshima Symphony Orchestra Office) / j , n o † ^ , Lawson, Ticket PIA, Chugoku Shimbun & Hiroshima Symphony Orchestra Office / Hiroshima Symphony Orchestra Office 082-532-3080 E-mail: info@hirokyo.or.jp

- Conductor: Kah Chun Wong
Flute: Karl-Heinz Schütz



€ Legend: La Speranza

9th Sat. / 2:00 pm (1:30 pm) / Hiroshima Kenmin Bunka Center / ¥6,000 / Now on sale / Ticket PIA, Lawson, e+, • / UNION Music Office 082-247-6111 - LEGEND is an operatic vocal group consisting of five men.

€ Hiroshima Symphony Orchestra, Discovery Series: Schubert Symphonien Zyklus vol. 2

(Suppé: *Dichter und Bauer, Ouverture*; Schöenberg: *Theme and Variations, op. 43b*; Schubert (arr. Webern): *Deutsche Tänze, D820*; Schubert: *Symphonie Nr. B-dur, D485*)

29th Fri. / 6:45 pm (5:45 pm) / JMS Aster Plaza / S-¥5,200 A-¥4,200 B- ¥3,200 Students-¥1,000 (Student tickets are only sold at the Hiroshima Symphony Orchestra Office.) / From Sun., April 29 (from Tue., May 1 at the Hiroshima Symphony Orchestra Office) / j , n o † ^ , Lawson, Ticket PIA, Chugoku Shimbun, JMS Aster Plaza & Hiroshima Symphony Orchestra Office / Hiroshima Symphony Orchestra Office 082-532-3080 E-mail: info@hirokyo.or.jp

- Conductor: Tatsuya Shimono

July

€ MACHINE HEAD:

Catharsis Japan Tour 2018

5th Thurs. / 7:00 pm (6:00 pm) / Hiroshima Club Quattro / ¥8,000 / Now on sale / Hiroshima Club Quattro, e+, Ticket PIA, Lawson, • , Tower Records Hiroshima / Hiroshima Club Quattro 082-542-2280

€ Prague Radio Symphony Orchestra & Dai Miyata (cello)

6th Fri. / 6:45 pm (6:15 pm) / Ueno Gakuen Hall / SS-¥12,000 S-¥10,000 A-¥8,000 B-¥6,000 / Now on sale / • † / Green Concert Hiroshima 082-241-8868

€ Hiroshima Symphony Orchestra: The 382nd Subscription Concert

(Toshio Hosokawa: *Meditation – to the victims of Tsunami 3.11 –*; Messiaen: *le Tombeau resplendissant*; Stravinsky: *L'Oiseau de feu (1910 Edition)*)

7th Sat. / 3:00 pm (2:00 pm) / Hiroshima Bunka Gakuen HBG Hall / S-¥5,200 A-¥4,700 B-¥4,200 Students-¥1,500 (Student tickets are only sold at the Hiroshima Symphony Orchestra Office.) / From Mon., May 7 / j , n o † ^ , Lawson, Ticket PIA, Chugoku Shimbun & Hiroshima Symphony Orchestra Office / Hiroshima Symphony Orchestra Office 082-532-3080 E-mail: info@hirokyo.or.jp

- Conductor: Jun Märkl

Please feel free to contact the International Exchange Lounge at 082-247-9715.

E-mail: golounge@pcf.city.hiroshima.jp

April 2018

NEW!

€ Hiromitsu Agatsuma: "Standard Songs"
feat. Chikuzen Sato 2018

8th Sun. / 4:00 pm (3:30 pm) / Blue Live Hiroshima
/ ¥6,800 / From Sat., April 21 / Lawson, Ticket
PIA, e+, • † / Candy Promotion 082-249-8334
- This is a *shamisen* (traditional Japanese guitar) and
piano concert.

€ Kyoko Sako Mandolin Recital

NEW!

14th Sat. / 6:30 pm (6:00 pm) / Elisabeth University
of Music, Xavier Hall / Advance: Adults-¥2,500
Students-¥1,000; At the door: Adults-¥3,000
Students-¥1,500 (all non-reserved seats) / Now on
sale / • /
- Mandolin: Kyoko Sako / Electronics: Shintaro Imai

€ Kiev Ballet:

A Best Selection of Classical Ballet

NEW!

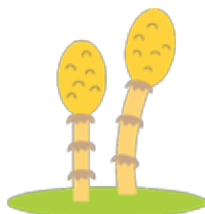
24th Tue. / 2:00 pm (1:30 pm) / Hatsukaichi Bunka
Hall Sakurapia / ¥6,500 / Now on sale / Ticket
PIA, Lawson, • , Sakurapia / Hatsukaichi Bunka
Hall Sakurapia 0829-20-0111

€ Hiroshima Symphony Orchestra, Discovery
Series: Schubert Symphonien Zyklus vol. 2

(*Suppé: Boccaccio, Overture; Berg: Sieben frühe Lieder;*
Schubert: Symphony Nr. 6 C-dur, D589)
27th Fri. / 6:45 pm (5:45 pm) / JMS Aster Plaza / S-
¥5,200 A-¥4,200 B- ¥3,200 Students-¥1,000
(Student tickets are only sold at the Hiroshima
Symphony Orchestra Office.) / From Sun., May 27
(from Mon., May 28 at the Hiroshima Symphony
Orchestra Office) / j , n o † ^ , Lawson, Ticket
PIA, Chugoku Shimbun, JMS Aster Plaza &
Hiroshima Symphony Orchestra Office /
Hiroshima Symphony Orchestra Office 082-532-
3080 E-mail: info@hirokyo.or.jp
- Conductor: Tatsuya Shimono
Soprano: Miwako Handa

€ Osaka Shion Wind Orchestra:
Dragon Quest Concert in Hiroshima

28th Sat. / 5:00 pm (4:00 pm) / Hiroshima Bunka
Gakuen HBG Hall / S-¥5,000 A-¥4,000 / Now
on sale / • † , Ticket PIA, Lawson, Seven-Eleven,
e+ / HOME Event Center 082-221-7116
(weekdays, 10 am – 5 pm)
- "Dragon Quest" is a famous PRG series in Japan. Its
music is also famous.



August

€ Hiroshima Symphony Orchestra:
An Evening of Peace Concert

(*Brahms: Symphony No. 3 in F major, op. 90; Brahms:
Concerto No. 2 in B-flat major, op. 83*)

5th Sun. / 3:00 pm (2:00 pm) / Hiroshima Bunka
Gakuen HBG Hall / S-¥5,000 A-¥4,000
Students-¥2,000 (Student tickets are only sold at the
Hiroshima Symphony Orchestra Office.) / From Tue.,
Jun. 5 / j , n o † ^ , Lawson, Ticket PIA,
Chugoku Shimbun & Hiroshima Symphony
Orchestra Office / Hiroshima Symphony Orchestra
Office 082-532-3080 E-mail: info@hirokyo.or.jp
- Conductor: Kazuyoshi Akiyama / Piano: Nelson Freire

€ KAGURA for Peace 2018 in Hiroshima:
Hiroshima – Kagura and <OROCHI for
Kagura and Orchestra> Repose of Souls
and Resurgence

€ 18th Sat. • 19th Sun. / € 6:00 pm (5:30 pm)
• 1:30 pm (1:00 pm) / JMS Aster Plaza / Now on
sale / • f ... † ‡ , JMS Aster Plaza, Hatsukaichi
Bunka Hall Sakurapia / Hiroshima Bijutsu
Kenkyusho 082-506-3060

TICKET PRICES: ² All non-reserved seats

w Ticket for Aug. 18 w

Advance: Adults-¥3,000 Students-¥2,000
Elementary school students-¥1,000
Pair tickets-¥5,000
At the door: Adults-¥3,500 Students-¥2,500
Elementary school students-¥1,500
Pair tickets-¥5,500

w Ticket for Aug. 19 w

Advance: Adults-¥4,000 Students-¥3,000
Elementary school students-¥1,000
Pair tickets-¥7,000
At the door: Adults-¥4,500 Students-¥3,500
Elementary school students-¥1,500
Pair tickets-¥7,500

w 2-day Tickets: ¥6,000

€ Ventures Japan Tour 2018

NEW!

23rd Thurs. / 6:30 pm (6:00 pm) / Hatsukaichi
Bunka Hall Sakurapia / ¥6,000 / From Sat., May 12
/ Lawson, Ticket PIA, e+, • † , Sakurapia / Candy
Promotion Hiroshima 082-249-8334; Hatsukaichi
Bunka Hall Sakurapia 0829-20-0111

€ 2018 ~ Erth's Dinosaur Zoo ~

NEW!

27th Mon. / • 1:00 pm (12:30 pm) , 3:30 pm
(3:00 pm) / Hiroshima Bunka Gakuen HBG Hall /
¥3,000 / From Sun., April 1 / Lawson, Ticket PIA,
e+ / Candy Promotion Hiroshima 082-249-8334

Please feel free to contact the International Exchange Lounge at 082-247-9715.

E-mail: golounge@pcf.city.hiroshima.jp

April 2018

September

NEW!

€ **Tsukemen Live 2018 "X"**

1st Sat. / 3:00 pm (2:30 pm) / JMS Aster Plaza /
 ¥5,000 / From Sat., April 28 / Lawson, Ticket PIA,
 e+ / UNION Music Office 082-247-6111

€ **Hiroshima Symphony Orchestra:
The 383rd Subscription Concert**

NEW!

(Mozart: *Don Giovanni*, K. 527 Overture; Mozart: *Piano
 Concerto No. 9 in E-flat major*, K. 271 "Jeunehomme";
 Beethoven: *Symphony No. 4 in B-flat major*, op. 60)

7th Fri. / 6:45 pm (5:45 pm) / Hiroshima Bunka
 Gakuen HBG Hall / S-¥5,200 A-¥4,700 B-
 ¥4,200 Students-¥1,500 (Student tickets are only
 sold at the Hiroshima Symphony Orchestra Office) /
 From Sat., July 7 (from Mon., July 9 at the
 Hiroshima Symphony Orchestra Office) /
 j , n o † ^ , Lawson, Ticket PIA, Chugoku
 Shimbun & Hiroshima Symphony Orchestra Office
 / Hiroshima Symphony Orchestra Office 082-532-
 3080 E-mail: info@hirokyo.or.jp
 - Conductor: Gaetano d'Espinosa
 Piano: Kim Hyun Jung

€ **Mami Hagiwara Piano Recital**

NEW!

24th Mon. / 4:00 pm (3:30 pm) / Elisabeth
 University of Music, Cecilia Hall / ¥4,000 / From
 Sun., May 27 / • † ‡ , Lawson, Ticket PIA /
 HOME Event Center 082-221-7116 (weekdays, 10
 am – 5 pm)



Please feel free to contact the International Exchange Lounge at 082-247-9715.

E-mail: golounge@pcf.city.hiroshima.jp

April 2018



Event Halls

® Hiroshima Bunka Gakuen HBG Hall 広島文化学園 HBG ホール

(3-3 Kako-machi, Naka-ku, Hiroshima Tel. 082-243-8881)

† Take the No.24 bus bound for Yoshijima Eigyocho (吉島営業所) and get off at Kako-machi (加古町).
Walking time to destination: 2 minutes

® Hiroshima Kenmin Bunka Center 広島県民文化センター

(1-5-3 Ote-machi, Naka-ku, Hiroshima Tel. 082-245-2311)

† Take a streetcar or a bus and get off at Hondori (本通) or Kamiya-cho (紙屋町). Walking time to destination is 5 minutes.

® JMS Aster Plaza JMS アステールプラザ

(4-17 Kako-machi, Naka-ku, Hiroshima Tel. 082-244-8000)

† Take the No.24 bus bound for Yoshijima Eigyocho (吉島営業所) and get off at Kako-machi (加古町).
Walking time to destination is 2 minutes.

® Ueno Gakuen Hall 上野学園ホール

(19-1 Hakushima-kita-machi, Naka-ku, Hiroshima Tel. 082-223-6367)

† Take the Astramline bound for Koiki Koen-mae (広域公園前) or Chorakuji (長楽寺) Station and get off at Hakushima (白島) Station. Walking time to destination is 3 minutes.

® Hiroshima Kokusai Kaigijou (International Conference Center Hiroshima), Phoenix Hall 広島国際会議場フェニックスホール

(1-5 Nakajima-cho, Naka-ku, Hiroshima Tel. 082-242-7777)

† Get on a Hiroshima Bus bound for Yoshijima and get off at Heiwa Kinenkoen (平和記念公園).
† From Chuden-mae (中電前) or Genbaku Dome-mae (原爆ドーム前) Streetcar Stop, walking time to destination is 5 minutes.

® Hiroshima Club Quattro 広島クラブクアトロ

(10-1 Hondori, Naka-ku, Hiroshima (Hiroshima PARCO Hon-kan 10F) Tel. 082-542-2280)

† From Hatchobori (八丁堀) Streetcar Stop, walking time to destination is 5 minutes.

® Hiroshima Green Arena 広島グリーンアリーナ

(4-1 Moto-machi, Naka-ku, Hiroshima Tel. 082-228-1111)

† From Kamiya-cho-nishi (紙屋町西) or Kamiya-cho-higashi (紙屋町東) Streetcar Stop, walking time to destination is 5 minutes.

® Hiroshima Sun Plaza 広島サンプラザ

(3-1-1 Shoko Center, Nishi-ku, Hiroshima Tel. 082-278-5000)

† Take a train or streetcar to Miyajima and get off at JR Shin-inokuchi (新井口) Station (JR Sanyo Line) or Shoko Center-iriguchi (商工センター入り口) Streetcar Stops (Hiroden Miyajima Line). Walking time to destination is 5 minutes.

® Elisabeth University of Music エリザベト音楽大学

(4-15 Nobori-machi, Naka-ku, Hiroshima Tel. 082-221-0918)

† From Kanayama-cho (銀山町) or Jogakuin-mae (女学院前) Streetcar Stop, walking time to destination is 10 minutes.

® Higashi Kumin Bunka Center 東区民文化センター

(10-31 Higashi-kaniya-cho, Higashi-ku, Hiroshima Tel. 082-264-5551)

† From the Shinkansen Exit of the JR Hiroshima (広島) Station, walking time to destination is 10 minutes.

Please feel free to contact the International Exchange Lounge at 082-247-9715.

E-mail: golounge@pcf.city.hiroshima.jp

April 2018

® **Nishi Kumin Bunka Center 西区民文化センター**

(6-1 Yokogawa Shin-machi, Nishi-ku, Hiroshima Tel. 082-234-1960)

† From JR Yokogawa (横川) Station, walking time to destination is 5 minutes.

® **Asaminami Kumin Bunka Center 安佐南区民文化センター**

(22-17 Nakasuji 1-chome, Asaminami-ku, Hiroshima Tel. 082-879-3060)

† From *Astramline* Nakasuji (中筋) Station, walking time to destination is 5 minutes.

® **Saeki Kumin Bunka Center 佐伯区民文化センター**

(6-1-10 Itsukaichi-chuo, Saeki-ku, Hiroshima Tel. 082-921-7550)

† From Hiroshima Bus Center (*Sogo* Hiroshima, 3F), take a bus to Yakushigaoka-danchi (薬師が丘団地), Shikigaoka-danchi (四季が丘団地), Higashi-kannondai-danchi (東観音台団地) or Ajinadai-kita (阿品台北) and get off at Saeki-kumin Bunka Center-mae (佐伯区民文化センター前). Walking time to destination is 1 minute.

® **Aki Kumin Bunka Center 安芸区民文化センター**

(2-16 Funakoshi-minami 3-chome, Aki-ku, Hiroshima Tel. 082-824-1330)

† From JR Kaitaichi (海田市) Station (JR Sanyo Line), walking time to destination is 5 minutes.

® **Blue Live Hiroshima ブルーライブ広島**

(3-12-69 Ujina Kaigan, Minami-ku, Hiroshima Tel. 082-250-5522)

† Take a streetcar for Hiroshima-ko (No. 1, 3 or 5) and get off at Kaigan-dori (海岸通). Walking time to destination is 5 minutes.

® **PARTE エンジェルパルテ**

(7-25 Fukuromachi, Naka-ku, Hiroshima Tel. 082-247-5588)

† From Hondori (本通) or Tatemachi (立町) Streetcar Stop, walking time to destination is 10 minutes

® **Yamaha Music Hiroshima ヤマハミュージック広島**

(1-1-18 Kamiya-cho, Naka-ku, Hiroshima Tel. 082-244-3666)

† From Kamiya-cho-higashi (紙屋町東) or Tatemachi (立町) Streetcar Stop, walking time to destination is 3 minutes.

® **Kawai Hiroshima Concert Salon "Pace" カワイ広島コンサートサロン "パーチェ"**

(2-2-6 Kamiya-cho, Naka-ku, Hiroshima Tel. 082-243-9291)

† From Hondori (本通) Streetcar Stop, walking time to destination is 2 minutes.

® **Japan Evangelical Lutheran Church of Hiroshima ルーテル広島教会**

(2-12 Tsurumi-cho, Naka-ku, Hiroshima Tel. 082-241-3695)

† From Hijiyama-shita (比治山下) Streetcar Stop, walking time to destination is 3 minutes.

® **Jodoshinshu Honganji-ha Hiroshima Betsuin 浄土真宗本願寺派広島別院**

(1-19 Tera-machi, Naka-ku, Hiroshima Tel. 082-231-0302)

† Get off at Betsuin-mae (別院前) Streetcar Stop.

® **Hatsukaichi Bunka Hall Sakurapia はつかいち文化ホールさくらぴあ**

(1-11-1 Shimo-hera, Hatsukaichi City Tel. 0829-20-0111)

† Take a train on the JR Sanyo Line bound for Iwakuni and get off at JR Miyauchi Kushido (宮内串戸) Station. Walking time to destination is 15 minutes.

† Take a streetcar on the Hiroden Miyajima Line and get off at Hatsukaichi Shiyakusho-mae (廿日市市役所前). Walking time to destination is 8 minutes.

® **Kure City Bunka Hall 呉市文化ホール**

(3-10-1 Chuo, Kure City Tel. 0823-25-7878)

† From JR Kure (呉) Station (JR Kure Line), walking time to destination is 7 minutes.

Please feel free to contact the International Exchange Lounge at 082-247-9715.

E-mail: golounge@pcf.city.hiroshima.jp

April 2018



Museums



A: Adults **U: University Students** **H: High School Students**
J: Junior High School Students **E: Elementary School Students**
S: Seniors (65 years old and above - Identification showing your date of birth is required.)

² Generally, admission is allowed up to 30 min. prior to closing. ²

Hiroshima Museum of Art

Address: 3-2 Moto-machi, Naka-ku, Hiroshima City
 Tel: 082-223-2530
 Hours: 9:00 am – 5:00 pm
 Closed: Mondays (except during special exhibitions)
 URL: <http://www.hiroshima-museum.jp>

Special Exhibition

i Mucha: Alfons Mucha's Women

Period:

Saturday, February 24 – Sunday, April 8

Admission Fee:

A -¥1,300 (¥1,100), S-¥1,100,
 U&H-¥1,000 (¥800), J&E-¥600 (¥400)
² Advance ticket prices shown in ().

i Cats in the Art

Period: Saturday, April 21 – Sunday, June 24

Admission Fee:

A -¥1,300 (¥1,100), S-¥1,100,
 U&H-¥1,000 (¥800), J&E-¥600 (¥400)
² Advance ticket prices shown in ().

Collection Exhibition

i Modern European Paintings

Period: Year-round

Hiroshima City Museum of Contemporary Art

Address: 1-1 Hijiyama Koen, Minami-ku, Hiroshima City
 Tel: 082-264-1121
 Hours: 10:00 am – 5:00 pm
 Closed: Mondays (except national holiday) & May 1
 URL: <http://www.hcmca.cf.city.hiroshima.jp/>

Special Exhibition

i NOBUYA ABE

1913-1971: Insatiable Quest beyond Borders

Period: Friday, March 23 – Sunday, May 20

Admission Fee: A-¥1,030 (¥820), U-¥720
 (¥620), S&H-¥510 (¥410), J & under-Free

² Advance ticket prices shown in ().

Collection Exhibition

i 2018 – 1: Collection Highlights & Special Feature: "Women's March"

Period:

Saturday, February 24 – Sunday, June 17

Admission Fee: A-¥360, U-¥270, S&H-¥170,
 J & under- Free

² Holders of special exhibition admission tickets are also entitled to view the collection exhibition.

Open Program (Free admission)

i Yoko Ono, My Memory is Beautiful

Period:

Saturday, February 24 – Sunday, June 17

Video Art Program (Free admission)

i Futoshi Miyagi

Period: Sunday, March 11 – Sunday, April 29

Hiroshima Prefectural Art Museum

Address: 2-22 Kaminobori-cho, Naka-ku,
 Hiroshima City

Tel: 082-221-6246

Hours: 9:00 am – 5:00 pm

² Open until 8:00 pm on Fridays (Apr. – Oct.)

² Open until 7:00 pm on Fridays (Nov. – Mar.)

Closed: April 2 & 9

URL: <http://www.hpam.jp/>

Special Exhibitions

i La Parisienne: Portraying Women in the Capital of Culture, 1715-1965 from the Museum of Fine Arts, Boston

Period:

Wednesday, April 11 – Sunday, June 10

Admission Fee:

A-¥1,400 (¥1,200), U&H-¥900 (¥700),
 J&E-¥600 (¥400)

² Advance ticket prices shown in ().

Please feel free to contact the International Exchange Lounge at 082-247-9715.

E-mail: golounge@pcf.city.hiroshima.jp

April 2018

Collection Exhibition

Admission Fee (all exhibitions):

A-¥510, U-¥310, H & under-Free

Holders of special exhibition admission tickets are also entitled to view the Museum's Collection exhibits.

i Shisui Rokkaku Collection: Hiroshima's Lacquerware Pioneer ~ New Collection Artworks, Donated in 2016 ~

Period: Tuesday, January 2 – Sunday, April 15

Kure Municipal Museum of Art

Address: Irifuneyama Koen, Saiwai-cho, Kure City
Tel: 0823-25-2007

Hours: 10:00 am – 5:00 pm

Closed: Tuesdays (except national holidays)

URL: <http://kure-bi.jp/>

Special Exhibition**i Ukiyo-e: Hiroshige Utagawa**

Period: Saturday, April. 7 – Sunday, May 20

Admission Fee:

A-¥1,000 (¥800), U&H-¥600 (¥500),

J&E-¥400 (¥300)

² Advance ticket prices shown in ().

Fukuyama Museum of Art

Address: 2-4-3 Nishi-machi, Fukuyama City
Tel: 084-932-2345

Hours: 9:30 am – 5:00 pm

Closed: Mondays (except national holidays)

HP: <http://www.city.fukuyama.hiroshima.jp/site/fukuyama-museum/>

Special Exhibition**i Jakuchu & Arts in Kyoto**

~ From the Hosomi Museum Collection ~

Period: Saturday, April 14 – Sunday, June 10

Admission Fee: A&U-¥1,000

H & under-Free

N A ticket to see both the special exhibition and the art collection is available for ¥1,100.

Collection Exhibition**i Spring Exhibition: Koichi Katayama**

Period: Wednesday, April 4 – Sunday, June 17

Admission Fee: A&U-¥300, H & under-Free

Onomichi City Museum of Art

Address: 17-19 Nishitsuchido-cho, Onomichi City
(Inside Senkoji Park)

Tel: 0848-23-2281

Hours: 9:00 am – 5:00 pm

Closed: Mondays except national holidays

URL: <http://www7.city.onomichi.hiroshima.jp/>

Special Exhibition**i Ukiyo-e: Cats**

Period: Saturday, March 17 – Sunday, May 6

Admission Fee: A-¥800, U&H-¥550,
J & under-Free

Okuda Genso Sayume Art Museum

Address: 453-6 Higashi Sakeya-machi, Miyoshi City
Tel: 0824-65-0010

Hours: 9:30 am – 5:00 pm

Closed: Wednesday, April 11

URL: <http://www.genso-sayume.jp>

Special Exhibition**i Gyokuun Hirata**

Period: Thursday, March 1 – Sunday, April 15

Admission Fee:

A-¥1,000 (¥900), Tickets for couple-

¥1,800 U&H-¥500 (¥400), J & under-Free

² Advance ticket prices shown in ().

Fukuya Department Store (Hiroshima Eki-mae)

Address: 9-1 Matsubara-cho, Minami-ku, Hiroshima City

Tel: 082-568-3111

Hours: 10:00 am – 8:00 pm

URL: <http://www.fukuya-dept.co.jp/>

Special Exhibition**i Mitsuaki Iwagô Photo Exhibition: Cats in Kyoto**

Period: Thursday, April 26 – Tuesday, May 8

Admission Fee: Not finalized

○ Mitsuaki Iwagô is a famous Japanese animal photographer.



Please feel free to contact the International Exchange Lounge at 082-247-9715.

E-mail: golounge@pcf.city.hiroshima.jp

April 2018

Hiroshima Toyo Carp Schedule 2018

The Toyo Carp (Hiroshima's professional baseball team) plays about 60 games at the MAZDA Zoom-Zoom Stadium Hiroshima every year.

GAME SCHEDULE : Interleague Play

APRIL

Sun., 1st, 1:30 pm / vs. Chunichi Dragons
 Fri., 6th, 6:00 pm / vs. Yokohama DeNA Baystars
 Sat., 7th, 2:00 pm / vs. Yokohama DeNA Baystars
 Sun., 8th, 1:30 pm / vs. Yokohama DeNA Baystars
 Wed., 18th, 6:00 pm / vs. Tokyo Yakult Swallows
 Thurs., 19th, 6:00 pm / vs. Tokyo Yakult Swallows
 Sat., 28th, 1:30 pm / vs. Hanshin Tigers
 Sun., 29th, 1:30 pm / vs. Hanshin Tigers
 Mon., 30th, 1:30 pm / vs. Hanshin Tigers

JUNE

Tue, 5th, 6:00 pm / vs. Hokkaido
 Nippon-Ham Fighters
 Wed., 6th, 6:00 pm / vs. Hokkaido
 Nippon-Ham Fighters
 Thurs., 7th, 6:00 pm / vs. Hokkaido
 Nippon-Ham Fighters
 Fri., 8th, 6:00 pm / vs. Tohoku Rakuten
 Golden Eagles
 Sat., 9th, 2:00 pm / vs. Tohoku Rakuten
 Golden Eagles
 Sun., 10th, 1:30 pm / vs. Tohoku Rakuten
 Golden Eagles
 Tue., 26th, 6:00 pm / vs. Yomiuri Giants
 Wed., 27th, 6:00 pm / vs. Yomiuri Giants
 Thurs., 28th, 6:00 pm / vs. Yomiuri Giants

MAY

Tue., 1st, 6:00 pm / vs. Yomiuri Giants
 Wed., 2nd, 6:00 pm / vs. Yomiuri Giants
 Thurs., 3rd, 1:30 pm / vs. Yomiuri Giants
 Tue., 8th, 6:00 pm / vs. Yokohama DeNA Baystars
 Wed., 9th, 6:00 pm / vs. Yokohama DeNA Baystars
 Fri., 11th, 6:00 pm / vs. Hanshin Tigers
 Sat., 12th, 2:00 pm / vs. Hanshin Tigers
 Sun., 13th, 1:30 pm / vs. Hanshin Tigers s
 Fri., 18th, 6:00 pm / vs. Tokyo Yakult Swallows
 Sat., 19th, 2:00 pm / vs. Tokyo Yakult Swallows
 Sun., 20th, 1:30 pm / vs. Tokyo Yakult Swallows
 Fri., 25th, 6:00 pm / vs. Chunichi Dragons
 Sat., 26th, 2:00 pm / vs. Chunichi Dragons
 Sun., 27th, 1:30 pm / vs. Chunichi Dragons
 Wed., 30th, 6:00 pm / vs. Saitama Seibu Lions
 Thurs., 31st, 6:00 pm / vs. Saitama Seibu Lions

JULY

Tue, 3rd, 6:00 pm / vs. Tokyo Yakult Swallows
 Wed., 4th, 6:00 pm / vs. Tokyo Yakult Swallows
 Thurs., 5th, 6:00 pm / vs. Tokyo Yakult Swallows
 Mon., 9th, 6:00 pm / vs. Hanshin Tigers
 Tue., 10th, 6:00 pm / vs. Hanshin Tigers
 Wed., 11th, 6:00 pm / vs. Hanshin Tigers
 Fri., 20th, 6:00 pm / vs. Yomiuri Giants
 Sat., 21st, 6:00 pm / vs. Yomiuri Giants
 Sun., 22nd, 6:00 pm / vs. Yomiuri Giants
 Fri., 27th, 6:00 pm / vs. Yokohama DeNA Baystars
 Sat., 28th, 6:00 pm / vs. Yokohama DeNA Baystars
 Sun., 29th, 6:00 pm / vs. Yokohama DeNA Baystars

TICKET OFFICES

w MAZDA Zoom-Zoom Stadium Hiroshima

Tickets can be purchased at the ticket booths at the entrances of the stadium (closed on August 6).

Booth Opening Times

11:30 am (days with night games) / 11:00 am (days with day games)

11:00 am – 4:00 pm (days when there are no games)

w CARPIO (6-7 Hacho-bori, Naka-ku)

OPEN: 10:00 am – 4:00 pm

CLOSED: No fixed times

TEL: 227-2222

w Convenience Stores

Tickets are available at convenience stores such as Lawson, Seven-Eleven, FamilyMart and Sunkus.

ACCESS

MAZDA Zoom-Zoom Stadium Hiroshima:

From JR Hiroshima Station, walking time to the stadium is 10 minutes.

INQUIRIES

Hiroshima Toyo CARP

Tel. (082) 223-2141 Fax. (082) 502-1189

URL: www.carp.co.jp/



Please feel free to contact the International Exchange Lounge at 082-247-9715.

E-mail: golounge@pcf.city.hiroshima.jp

April 2018

Sanfrecce Hiroshima FC Schedule 2018

GAME SCHEDULE Date / Kick Off / Game / Venue / Ticket Sales

2018 J League

Wed., April 11 / 7:00 pm / vs. Yokohama F·Marinos / EDION Stadium Hiroshima / Now on sale
 Sat., April 21 / 2:00 pm / vs. Sagantosu / EDION Stadium Hiroshima / Now on sale
 Wed., May 2 / 7:30 pm / vs. Shimizu S-Pulse / EDION Stadium Hiroshima / From Sat., April 7
 Sun., May 6 / 5:00 pm / vs. Vissel Kobe / EDION Stadium Hiroshima / From Sat., April 7
 Sun., May 20 / 4:00 pm / vs. Cerezo Osaka / EDION Stadium Hiroshima / From Sat., April 7
 Wed., July 18 / 7:00 pm / vs. Gamba Osaka / EDION Stadium Hiroshima / From Sat., June 2
 Sat., July 28 / 7:00 pm / vs. Urawa Red Diamonds / EDION Stadium Hiroshima / From Sat., June 2
 Sun., August 5 / 7:00 pm / vs. Shonan Bellmare / EDION Stadium Hiroshima / From Sat., July 7
 Sat., August 11 / 7:00 pm / vs. V-Varen Nagasaki / EDION Stadium Hiroshima / From Sat., July 7
 Sun., August 19 / 7:00 pm / vs. Kawasaki Frontale / EDION Stadium Hiroshima / From Sat., July 7
 Sat., September 1 or Sun., September 2 / Not finalized / vs. Kashima Antlers / EDION Stadium Hiroshima / From Sat., August 4
 Sat., September 22 or Sun., September 23 / Not finalized / vs. F. C. Tokyo / EDION Stadium Hiroshima / From Sat., August 4
 Sat., October 6 or Sun., October 7 / Not finalized / vs. Kashiwa Reysol / EDION Stadium Hiroshima / From Sat., September 1
 Sat., November 10 / Not finalized / vs. Vegalta Sendai / EDION Stadium Hiroshima / From Sat., October 6
 Sat., November 24 / Not finalized / vs. Nagoya Grampus / EDION Stadium Hiroshima / From Sat., October 6

2018 J League YBC Levain Cup Group Stage

Wed., April 4 / 7:00 pm / vs. Urawa Red Diamonds / EDION Stadium Hiroshima / Now on sale
 Wed., May 9 / 7:00 pm / vs. Gamba Osaka / EDION Stadium Hiroshima / From Sat., April 7

TICKETS Seats / Advance Tickets / At the Door

w Reserved Seats SS / ¥5,300 / ¥5,900 w Reserved Seats SA / ¥3,700 / ¥4,300
 w Unreserved Seats for Adults / ¥2,600 / ¥3,200
 w Unreserved Seats for Students (High School Students and under) / ¥1,000 / ¥1,500



ACCESS

w EDION Stadium Hiroshima (Hiroshima Big Arch)

Take the *Astramline* bound for *Koiki-koen-mae* (広域公園前) and get off at the last station, *Koiki-koen-mae* (広域公園前).

From *Hondori* Station: One way fare - ¥480 Travel time - 35 min.

TICKET OFFICES

w Sanfrecce Hiroshima Official Shop V-POINT (Shareo, underground shopping mall) / Tel. 248-3317 / Mon. – Sat.: 11 am – 9 pm; Sun. & national holidays: 10 am – 8 pm / Open every day
 w EDION Play Guide (SUNMALL, 1F) w Fukuya (Hiroshima Station) (7F) w Alpark Tenmaya (3F)
 w Convenience Stores (FamilyMart, Seven-Eleven, CircleKSunkus and Lawson)

INQUIRIES: Sanfrecce HIROSHIMA Tel. 233-3233 URL: www.sanfrecce.co.jp

Please feel free to contact the International Exchange Lounge at 082-247-9715.

E-mail: golounge@pcf.city.hiroshima.jp

April 2018

Hiroshima Dragonflies

2017 – 2018 B2 League

μ Hiroshima Dragonflies is a professional basketball team in Hiroshima.

GAME SCHEDULE Date / Starting Time / Game / Venue

² Only the games scheduled to be held in Hiroshima are listed below. For away games, please check the Hiroshima Dragonflies' official website.

μ APRIL

Sat., April 7 / 6:30 pm / vs. Ehime Orange Vikings / Hiroshima Sun Plaza
 Sun., April 8 / 1:30 pm / vs. Ehime Orange Vikings / Hiroshima Sun Plaza
 Sat., April 14 / 6:30 pm / vs. Earthfriends Tokyo Z / Hiroshima Sun Plaza
 Sun., April 15 / 1:30 pm / vs. Earthfriends Tokyo Z / Hiroshima Sun Plaza
 Sat., April 28 / 6:30 pm / vs. Kanazawa Samuraiz / Hiroshima Sun Plaza
 Sun., April 29 / 1:30 pm / vs. Kanazawa Samuraiz / Hiroshima Sun Plaza

μ MAY

Wed., May 2 / 7:00 pm / vs. Bambitious Nara / Hiroshima Sun Plaza

TICKETS (At the Door)

w Reserved seats: ¥3,700 - ¥13,400

w Unreserved seats (1st floor seats): Adults-¥3,200 Children-¥2,100

w Unreserved seats (2nd floor seats): Adults-¥2,600 Children-¥1,500

ACCESS

w **Hiroshima Sun Plaza** (1-1 Shoko Center 3-chome, Nishi-ku, Hiroshima City)

From JR Shin Inokuchi (新井口) Station or Shoko Center Iriguchi (商工センター入口) Streetcar Stop, walking time to destination is 5 minutes.

TICKET OFFICES

w Hiroshima Dragonflies Club Shop (Hiroshima Marina Hop / Tel. 082-297-6825 / 10:00 am – 8:00 pm)
 (The club shop sells advanced tickets only.)

w Ticket PIA w Convenience Stores (FamilyMart, Seven Eleven, CircleKSunkus and Lawson)

w Hiroshima Power House (Basketball Pro Shop) w Taiikusha (Sporting-goods store)

INQUIRIES

w Hiroshima Dragonflies Tel. 082-297-6825 (Mon. – Fri., 10:00 am – 5:30 pm)

HP: <http://hiroshimadragonflies.com>

w B. League Official HP: <https://www.bleague.jp/>

Please feel free to contact the International Exchange Lounge at 082-247-9715.

E-mail: golounge@pcf.city.hiroshima.jp

April 2018

Seasonal Event Information

April 2018

Ⓔ Event schedules are subject to change.
Please contact event organizers before you go.



Events Held in Hiroshima City

Wednesdays between April 4 and December 26, 2018

J Apr. 4, 11, 18 & 25; May 9, 16, 23 & 30

Hiroshima Kagura ひろしまけんみんぶんか 広島県民文化センター「ひろしまがくら 広島神楽」ていきこうえん 定期公演

TIME: 7:00 pm – 8:45 pm (The venue will open at 6:00 pm.)

PLACE: Hiroshima Kenmin Bunka Center, Ote-machi, Naka-ku (located near Hondori Shopping Street)

ACCESS: From Kamiya-cho-nishi or Hondori Streetcar Stops, walking time to destination is 3 minutes.

TICKETS: ¥1,000 ² All non-reserved seats

² Tickets will be sold from 5:00 pm on the performance date at the center.

There are no advance tickets.

INQUIRIES: Hiroshima Kenmin Bunka Center 082-245-2311

Until Sun., April 8

Night Viewing of Illuminated Cherry Blossoms at Shukkeien Garden

よざくら 夜桜 ライトアップ

OPEN HOURS: 9:00 am – 9:00 pm (entry permitted up to 8:30 pm.)

PLACE: Shukkeien Garden

ACCESS: From Shukkeien-mae Streetcar Stop, walking time to destination is 5 minutes.

ADMISSION FEE: Adults - ¥260, University & High school students - ¥150, Junior high & Elementary school students - ¥100 ² Fee for the tea ceremony is also required.

INQUIRIES: Shukkeien Garden 082-221-3620

▼ Other Event ▼

Niwa Café (Japanese style café) & Kimono Wearing Experience

PERIOD: Until Sun., Apr. 8

w **Niwa Café**

TIME: 9:00 am – 9:00 pm

w **Kimono Wearing Experience** ² Reservations will **NOT** be required.

TIME: 10:30 am – 8:30 pm (applications will be accepted until 7:30 pm.)

PLACE: Shibafu hiroba in front of the Prefectural Museum

FEE: ¥2,000 (including a cup of green tea)

© Men's and children's kimonos are also available.

Sun., April 1 & 15

Hiroshima Minato Marché ひろしまみなとマルシェ

TIME: 9:00 am – 3:00 pm

PLACE: Open Space between East and West Terminal of Hiroshima Port, Minami-ku

ACCESS: Take the No. 1, 3 or 5 streetcar bound for Hiroshima Port and get off at the last stop, Hiroshima Port.

INQUIRIES: Hiroshima Minato Marché Office 082-255-6646

© You can buy and taste locally-grown fresh vegetables and other food products at the market.

Please feel free to contact the International Exchange Lounge at 082-247-9715.

E-mail: golounge@pcf.city.hiroshima.jp

April 2018

Fri., April 6 – Sun., April 8**FISE World Series Hiroshima 2018 - World Action Sports Festival****PLACE:** The Open Space of the Former Municipal Baseball Stadium, Moto-machi, Naka-ku**ACCESS:** Get off at Kamiya-cho-nishi or Genbaku Dome-mae Streetcar Stops.**ADMISSION FEE:** Free admission ² Visitors who are 13 years old and above will be required to register to enter the venue.**SPORTING EVENTS:** BMX Freestyle Park, BMX Freestyle Flatland, Skateboard Street, Parkour, Bouldering, Roller Freestyle & Breakdancing**INQUIRIES:** Executive Committee HP: <http://www.fisehiroshima.jp>**▽ Other Events ▽** (Venue: The Open Space of the Former Municipal Baseball Stadium)**FISE Hiroshima World Music Action! 2018****SCHEDULE:** w Eve of festival: Thurs., Apr. 5, 6:30 pm (venue will open at 5:00 pm.)

w Live performance: • Fri., Apr. 6, 6:30 pm (venue will open at 5:00 pm.)

, Sat., Apr. 7, 6:00 pm (venue will open at 5:00 pm.)

w Finale: Sun., Apr. 8, 6:00 pm (venue will open at 5:00 pm.)

TICKETS: • Tickets for Apr. 5 & 8: Adults-¥4,400 Children (3 – 13 years old)-¥2,300

, Tickets for Apr. 6 & 7: ¥5,400

INQUIREIS: Kyodo Information 0570-200-888**Meat & Oyster Gourmet Festival TOKYO presented by FISE Hiroshima 2018****DATE & TIME:** Thurs., Apr. 5 – Sun., Apr. 8, 10:30 am – 7:00 pm**ADMISSION FEE:** Free admission ² Food and drink will incur extra charges.**INQUIREIS:** Kyodo Information 0570-200-888**Sun., April 8****Kan-ou (Cherry Blossoms-viewing) Tea Ceremony**かんおうちゃがい
観桜茶会**TIME:** 9:30 am – 3:00 pm**PLACE:** Shukkeien Garden**ACCESS:** From Shukkeien-mae Streetcar Stop, walking time to destination is 5 minutes.**FEE:** ¥700 for the tea ceremony² Admission fee for the garden is also required.

(Adults - ¥260, University & High school students - ¥150 Junior high & Elementary school students - ¥100)
--

INQUIRIES: Shukkeien Garden 082-221-3620**Fri., April 13 – Sun., April 22****Spring Green Fair 2018** はるのグリーンフェア 2018**TIME:** 10:00 am – 5:00 pm**PLACE:** Chuo Koen (Park), Motomachi, Naka-ku**ACCESS:** From the Genbaku Dome-mae Streetcar Stop, walking time to destination is 10 minutes.**ADMISSION FEE:** Free**INQUIRIES:** Ryokusei Ka, Hiroshima City Hall 082-504-2396© A potted plant will be given away for the first 250 people from 10:00 pm on the 13th.A saxophone quartet concert will be held on the 14th and the 21st (12:30 pm – 1:00 pm).

Please feel free to contact the International Exchange Lounge at 082-247-9715.

E-mail: golounge@pcf.city.hiroshima.jp

April 2018



Fri., April 13 – Thurs., April 19

2018 Cherry Blossom Viewing in Hiroshima はな
花のまわりみち

TIME: 10:00 am – 8:00 pm

PLACE: Zohei Kyoku (Japan Mint), Hiroshima Branch, Saeki-ku

ACCESS: Get off at JR Itsukaichi Station (JR Sanyo Line) or the Itsukaichi Streetcar Stop. Extra buses to the venue will run from the north exit of the JR station during the event period.

ADMISSION FEE: Free

INQUIRIES: Hello Dial 050-5548-8686 (8:00 am – 9:00 pm)
Japan Mint, Hiroshima Branch 082-922-1597 (after April 20)

© 63 varieties and 219 cherry trees will be in full bloom.

Sat., April 14 & Sun., April 15

The 33rd Hiroshima Boat Show: Marine Grand Festival 2018

だい かいひろしま
第33回 広島ボートショー マリン・グラン・フェスタ 2018

TIME: 10:00 am – 5:00 pm

PLACE: Hiroshima Kanon Marina, Kanon-shin-machi, Nishi-ku

ACCESS: Take the No. 3 bus and get off at Kanon Marina Hop (the last stop).

INQUIRIES: Executive Committee 082-228-0131

© This is the biggest marine event in Hiroshima.

Sun., April 15

Jiuta-mai (traditional Japanese songs and dance performance) じうたまい
地唄舞

TIME: From 1:30 pm onward

PLACE: Shukkeien Garden

ACCESS: From Shukkeien-mae Streetcar Stop, walking time to destination is 5 minutes.

FEE: ¥1,500 (including a cup of green tea)

² Admission fee for the garden is also required.

(Adults - ¥260, University & High school students - ¥150
Junior high & Elementary school students - ¥100)

INQUIRIES: *Misu no Kai* 080-6249-8507

Sat., April 21 & Sun., April 22

Spring Gourmet Festival 2018 はる
春のまるごとグルメフェスタ 2018

TIME: 10:00am – 5:00pm

PLACE: The Open Space of the Former Municipal Baseball Stadium, Motomachi, Naka-ku

ACCESS: Get off at the Kamiya-cho-nishi or the Genbaku Dome-mae Streetcar Stops.

ADMISSION FEE: Free

INQUIRIES: Chugoku Shimbun 082-236-2211 (Mon. – Fri., 9:30 am – 5:30 pm)

© Various food stalls will participate in this event. *Kagura* performances will also be held on the 21st (• 10:20 am , 2:30 pm).

Fri., April 27 – Sun., May 6

Meat Festival with World Beer and Gourmet Stadium 2018

にく
肉フェス with せかい世界のビールとグルメスタジアム 2018

TIME: 10:00 am – 9:00 pm ² Apr. 27 (Fri.), May 1 (Tue.) & 2 (Wed.): 11:00 am – 9:00 pm

PLACE: The Open Space of the Former Municipal Baseball Stadium, Moto-machi, Naka-ku

ACCESS: Get off at Kamiya-cho-nishi or Genbaku Dome-mae Streetcar Stops.

ADMISSION FEE: Free, except for entry to the “kids’ park”. ² Food and drink will incur extra charges.

INQUIRIES: Executive Committee (inside the Hiroshima TV building)
082-249-1218 (Mon. – Fri., 10 am – 6 pm)



Please feel free to contact the International Exchange Lounge at 082-247-9715.

E-mail: golounge@pcf.city.hiroshima.jp

April 2018

- © You can enjoy various meat dishes, and beer from all over the world.
- © Remember, no driving if you drink alcohol! Pets (except service dogs) are not allowed to enter the venue. Event may be canceled if the weather is bad.

Sat., April 28

Hiroshima Rosoku Takiginoh ひろしまろうそくたきぎのう
広島蝋燭新能

TIME: 6:45 pm ² The venue will open at 6:00 pm.

PLACE: Hiroshima Gokoku Shrine, *Noh* stage, Naka-ku

ACCESS: From Kamiya-cho-nishi or the Genbaku Dome-mae Streetcar Stops, walking time to destination is 10 minutes.

TICKET: SS - ¥13,000 S - ¥10,000 A - ¥8,000 B - ¥5,000

² Advance tickets are sold at Hiroshima Gokoku Shrine, EDION Hiroshima Play Guide (SUNMALL, 1F), *Fukuya* Department Store (Hiroshima Station) and Chugoku Shimbun.

INQUIRIES: Hiroshima Gokoku Shrine 082-221-5590 (9:00 am – 4:30 pm)

© *Noh* is a traditional Japanese performing art.

© This performance will be held at JMS Aster Plaza (Kako-machi, Naka-ku) if it rains on the 28th. Please check the shrine's website (<https://www.h-gokoku.or.jp/>) or call the shrine (082-221-5590) about the venue.

Sun., April 29

Cha-tsumi (Tea Leaf-Picking) Performance & Tea Ceremony ちゃつみ ちゃかい
茶摘まつり(茶会)

TIME: 10:00 am – 3:00 pm

PLACE: Shukkeien Garden

ACCESS: From Shukkeien-mae Streetcar Stop, walking time to destination is 5 minutes.

ADMISSION FEE: Adults - ¥260, University & High school students - ¥150,
Junior high school & Elementary school students - ¥100

INQUIRIES: Shukkeien Garden 082-221-3620

N **Tea Leaf-picking Demonstration:** 4 times (10:00 am, 11:00 am, 1:00 pm & 2:00 pm)

Saotome, girls dressed in traditional costumes, will demonstrate an old-fashioned way of tea leaf-picking. Freshly-picked tea will be served for free.

N **Tea Ceremony:** 10:00 am – 3:00 pm / ¥600 is required for *matcha*, powdered green tea.



Thurs., May 3 – Sat., May 5

The 42nd Hiroshima Flower Festival だい かい
第42回 ひろしまフラワーフェスティバル

TIME: From 11:00 am onward

PLACE: Peace Memorial Park, Heiwa-Odori (Peace Boulevard), etc.

ACCESS: Get off at the Genbaku Dome-mae Streetcar Stop, then walk for about 5 min.

EVENTS: May 3: Opening ceremony, parade, etc.

May 4: Stage performances

May 5: *Kinsai Yosakoi* dancing parade, closing ceremony, etc.

May 3 – 5: Various stage performances, sales kiosks, and other events

INQUIRIES: Hiroshima Flower Festival Executive Committee

082-294-4622 HP: <http://www.hiroshima-ff.com/>

© Hiroshima's Sister/Friendship Cities Event, "Daegu Day (Korea)" will also be held at the Flower Festival venue.

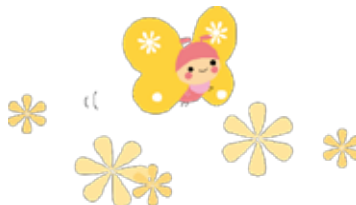


Please feel free to contact International Exchange Lounge at 082-247-9715.

E-mail: golounge@pcf.city.hiroshima.jp

April 2018

Events Held on Miyajima



Wed., April 4 – Fri., Nov. 30

Zero Higashida Sculpture Exhibition ゼロ・ヒガシダ^{てん}展

TIME: 8:00 am – 5:00 pm

PLACE: Inside Daishoin Temple ground, Miyajima

ACCESS: Get off at JR Miyajima-guchi Station (JR Sanyo Line) or the Miyajima Streetcar Stop (Hiroden Streetcar Miyajima Line), then take a ferry to Miyajima.

INQUIRIES: Daishoin Temple 0829-44-0111

Sun., April 8

Hana-matsuri Buddhist Memorial Service はなまつ ほうよう 花祭り 法要

TIME: From 11:00 am onward

PLACE: Daishoin Temple, Miyajima

ACCESS: Get off at JR Miyajima-guchi Station (JR Sanyo Line) or the Miyajima Streetcar Stop (Hiroden Streetcar Miyajima Line), then take a ferry to Miyajima.

INQUIRIES: Daishoin Temple 0829-44-0111

© This is a Buddhist memorial service celebrating Buddha's birthday. *Ama-cha* (sweet tea) will be served.

Sun., April 8

Kodo こうどうこうりゅう はつえんこう 香道 香流 初苑香

TIME: From 10:00 am onward

PLACE: Daishoin Temple, Miyajima

ACCESS: Get off at JR Miyajima-guchi Station (JR Sanyo Line) or the Miyajima Streetcar Stop (Hiroden Streetcar Miyajima Line), then take a ferry to Miyajima.

INQUIRIES: Daishoin Temple 0829-44-0111

© *Kodo* is the traditional Japanese art of appreciating the scents of aromatic woods.

Sun., April 15

Fire Walking Ceremony だいしょういん ひわた しき はる たいさい 大聖院 火渡り式 (春の大祭)

TIME: From 11:00 am onward

PLACE: Daishoin Temple, Miyajima

ACCESS: Get off at JR Miyajima-guchi Station (JR Sanyo Line) or the Miyajima Streetcar Stop (Hiroden Streetcar Miyajima Line), then take a ferry to Miyajima.

INQUIRIES: Daishoin Temple 0829-44-0111

© A spring festival where one walks over hot coals to pray for protection from illness and disaster. You can try it too!

Sun., April 15

Toka-sai (Peach Blossom Festival) とうかさい 桃花祭

TIME: From 5:00pm onward

PLACE: Itsukushima Shrine, Miyajima

ACCESS: Get off at JR Miyajima-guchi Station (JR Sanyo Line) or the Miyajima Streetcar Stop (Hiroden Streetcar Miyajima Line), then take a ferry to Miyajima.

FEE: Admission fee for Itsukushima Shrine

{ Adults & University students - ¥300 High school students - ¥200
Junior high & Elementary school students - ¥100 }

INQUIRIES: Itsukushima Shrine 0829-44-2020

© *Bugaku* (traditional court dance and music) will be performed after the ritual.

Please feel free to contact the International Exchange Lounge at 082-247-9715.

E-mail: golounge@pcf.city.hiroshima.jp

April 2018

Mon., April 16 – Wed., April 18**Toka-sai, Noh Ceremony** とうかさいごしんのう
桃花祭御神能**TIME:** 9:00 am – 4:00 pm**PLACE:** Itsukushima Shrine, Miyajima**ACCESS:** Get off at JR Miyajima-guchi Station (JR Sanyo Line) or the Miyajima Streetcar Stop (Hiroden Streetcar Miyajima Line), then take a ferry to Miyajima.**FEE:** Admission fee for Itsukushima Shrine

Adults & University students - ¥300	High school students - ¥200
Junior high & Elementary school students - ¥100	

INQUIRIES: Itsukushima Shrine 0829-44-2020© Various *Noh* performances will be held on Itsukushima Shrine's *Noh* stage which floats in the sea from the morning to the evening over a period of 3 days.**Fri., April 20 – Sun., May 20****Jusaburo Tsujimura Doll Exhibition: Taira no Kiyomori**つじむらじゅさぶろうにんぎょうてん たいらのきよもり
辻村寿三郎人形展「平清盛」**TIME:** 8:00 am – 5:00 pm**PLACE:** Daishoin Temple, Miyajima**ACCESS:** Get off at JR Miyajima-guchi Station (JR Sanyo Line) or the Miyajima Streetcar Stop (Hiroden Streetcar Miyajima Line), then take a ferry to Miyajima.**INQUIRIES:** NPO Miyajima Network HP: <http://miyajimanetwork.com/>

© Jusaburo Tsujimura is a famous doll maker from Miyoshi City, Hiroshima Prefecture.

Sat., April 28 – Sun., May 6**Daishoin Temple Satsuki (Azalea) Festival** だいしょういん まつ
大聖院 さつき祭り**TIME:** 8:00 am – 5:00 pm**PLACE:** Daishoin Temple, Miyajima**ACCESS:** Get off at JR Miyajima-guchi Station (JR Sanyo Line) or the Miyajima Streetcar Stop (Hiroden Streetcar Miyajima Line), then take a ferry to Miyajima.**INQUIRIES:** Daishoin Temple 0829-44-0111

© Exhibition of temple treasures, calligraphy by virtuous monks and flower arrangements.

Sun., April 29 & Mon., April 30**Hiroshima Yoga Peace '18** ひろしまヨガピース '18**SCHEDULE:** Please check the website below for the schedule.

Apr. 29: 8:30 am – 8:00 pm / Apr. 30: 8:30 am – 8:00 pm

PLACE: Iwaso Yutenkaku, Outside of Hiramatsu-jaya, Tenshinkaku (café) & Senjokaku, Miyajima**ACCESS:** Get off at JR Miyajima-guchi Station (JR Sanyo Line) or Miyajima Streetcar Stop (Hiroden Streetcar Miyajima Line), then take a ferry to Miyajima.**FEE:** ¥3,500 for 1 class; ¥9,500 for 3 classes; ¥14,000 for 5 classes; Yoga mat rental: ¥500 / day**TO APPLY:** Applications will be accepted through the website (<https://ticketyogap.shop-pro.jp/>) (Japanese only).**INQUIRIES:** Hiroshima Yoga Peace Executive Committee HP: <http://www.hiroshima-yogapeace.com>

© Famous yoga teachers from Japan and abroad will come and teach you yoga from various schools.

Thurs., May 3**Annual Celebration at Awashima Shrine** あwashimajinjaれいさい
粟島神社例祭**TIME:** From 11:00 am onward**PLACE:** Awashima Shrine, Miyajima**ACCESS:** Get off at JR Miyajima-guchi Station (JR Sanyo Line) or the Miyajima Streetcar Stop (Hiroden Streetcar Miyajima Line), then take a ferry to Miyajima.

Please feel free to contact the International Exchange Lounge at 082-247-9715.

E-mail: golounge@pcf.city.hiroshima.jp

April 2018

INQUIRIES: Itsukushima Shrine 0829-44-2020

© This is the annual celebration of “*Awashima-san*”, also known as the guardian deity of women.

Events Held Outside of Hiroshima City



Sat., March 24 – Sun., April 8

Sakura (cherry blossom) Festival at Kosanji Temple

こうさんじさくら
耕三寺桜まつり

PLACE: Kosanji Temple & Kosanji Temple Museum, Onomichi City

ACCESS: • Take a “*Shimanami Liner*” express bus from Hiroshima Bus Center (Hiroshima Sogo Department Store, 3F) and get off at Setoda Bus Stop (a 1 hour and 40 min. bus ride). Then take another bus from there and get off at Kosanji-mae.

² Please note that reservations are required to take a “*Shimanami Liner*”. Call the Hiroko Reservation Center (082-238-3344) for more information.

↳ Get on a ferry from Mihara Port or Onomichi Port and get off at Setoda Port.

ADMISSION FEE FOR THE TEMPLE & THE MUSEUM:

Adults-¥1,400 University students-¥1,000 High school students-¥800

Junior high school students and under-Free

INQUIRIES: Kosanji Temple & Kosanji Temple Museum 0845-27-0800

© 200 cherry blossom trees will be in full bloom during this period. Various events such as offering up cherry blossom-flavored tea and a photo contest will be held.

Sat., April 7

Sakura (cherry blossom) Tea Ceremony

さくら ちゃかい
茶会

TIME: 11:00 am – 3:30 pm

PLACE: In front of JR Onomichi Station, Onomichi City

ACCESS: Get off at JR Onomichi Station (JR Sanyo Line).

TICKETS: Advance tickets-¥2,000 At the venue-¥2,500

² Tickets include the fee for a cup of green tea, a lunch box, etc.

INQUIRIES: *Onomichi Shoko Kaigisho, Josei Kai* 0848-22-2165

Sat., April 14 & Sun., April 15

Spring Kannon (Deity of Mercy) Festival

はるかんのん
春観音まつり

TIME: Apr. 14: 1:00 pm – 4:00 pm / Apr. 15: 10:00 am – 11:00 am

PLACE: Jodo-ji Temple, Onomichi City

ACCESS: Take a bus from JR Onomichi Station (JR Sanyo Line) and get off at Jodo-ji-shita (a 7 min. bus ride). Walking time to destination is 1 minute.

INQUIRIES: Jodo-ji Temple 0848-37-2361

© A Buddhist memorial service will be held. *Chigo-gyoretsu*, a parade of children wearing *kimono*, will also be held.

Sat., April 14 & Sun., April 15

Miyatoko Festival

みやとこ
宮床まつり

PLACE: Around JR Tadanoumi Station (JR Kure Line) and Tokoura Shrine, Takehara City

ACCESS: From JR Tadanoumi Station (JR Kure Line), walking time to destination is 3 minutes.

INQUIRIES: Executive Committee 0846-26-1325

© A plant sale and street market are popular events at this festival.

Please feel free to contact the International Exchange Lounge at 082-247-9715.

E-mail: golounge@pcf.city.hiroshima.jp

April 2018

Sun., April 15**Kannon-san (Deity of Mercy) Festival** かんのんさん**TIME:** From 1:00 pm onward**PLACE:** Gokuraku-ji Temple, Hatsukaichi City**ACCESS:** From JR Hatsukaichi Station (JR Sanyo Line), driving time to destination is 30 minutes.**INQUIRIES:** Gokuraku-ji Temple 0829-39-0008**Fri., April 20****Hatsuka-no-ichi Market** はつか いち
廿日の市**TIME:** 8:00 am – 11:30 am**PLACE:** The Open Space in front of Hatsukaichi City Hall, Hatsukaichi City**ACCESS:** From Hatsukaichi Shiyakusho-mae Streetcar Stop (Hiroden Streetcar Miyajima Line), walking time to destination is 5 minutes.**INQUIRIES:** *Hatsukaichi Kanko Kyokai* (Tourist Association) 0829-31-5656**Sat., April 21****Commemorative Ceremony for Kobo-daishi** こうぼうだいししょうみえいく はなくよう
弘法大師 正御影 供 (花供養)**TIME:** From 1:00 pm onward**PLACE:** Saikoku-ji Temple, Onomichi City**ACCESS:** Take a bus from JR Onomichi Station (JR Sanyo Line) and get off Saikoku-ji-shita. Walking time to destination is 5 minutes.**INQUIRIES:** Saikoku-ji Temple 0848-37-0321© This is a Buddhist memorial service for *Kobo-daishi* (aka *Kukai*), a Buddhist monk during the Heian Period (794 A.D.–1185 A.D.).**Sat., April 28****Kagura Performance in Yoshiwa** はるせんばつよしわかぐらきょうえんたいかい
春選抜吉和神楽競演大会**TIME:** 9:15 am – 6:00 pm (The venue will open at 8:30 am.)**PLACE:** Gymnasium inside *Mominoki Shinrin Koen* (Forest Park), Yoshiwa, Hatsukaichi City**ACCESS:** From Hatsukaichi Shiyakusho-mae Streetcar Stop (Hiroden Miyajima Line), take a bus bound for Yoshiwa and get off at Yoshiwa-shisho (a 90 min. bus ride)**TICKETS:** ① Advance: High school students and up-¥2,000

Junior high and elementary school students-¥500

② Advance tickets are sold at *Hiroshima Yume Plaza* on the *Hondori* shopping street and *Alpark Tenmaya* 3F, Ticket Salon, etc.

③ At the door: High school students and up-¥2,500

Junior high and Elementary school students-¥500

INQUIRIES: *Hatsukaichi Kanko Kyokai* (Tourist Association), Yoshiwa Branch 0829-77-2404

Hatsukaichi City Office, Yoshiwa Branch 0829-77-2111

Mominoki Shinrin Koen 0829-77-2011**Sat., April 28 & Sun., April 29****The 75th Onomichi Minato Festival** だい かいおのみち まつり
第75回尾道みなと祭**PLACE:** Central area of Onomichi City**ACCESS:** Get off at JR Onomichi Station (JR Sanyo Line).**INQUIRIES:** *Kanko Ka*, Onomichi City Hall 0848-38-9184

© This is the biggest festival in Onomichi. Concerts, dancing parades, etc. will be held.

Please feel free to contact the International Exchange Lounge at 082-247-9715.

E-mail: golounge@pcf.city.hiroshima.jp

April 2018

Sun., April 29**The 61st Kure Minato Festival** だい かいくれ みなとまつり
第61回呉みなと祭**TIME:** 10:00 am – 6:00 pm ² Parade: 2:00 pm – 4:30 pm (tentative)**PLACE:** Kuramoto-dori Street and Renga-dori Street, Kure City**ACCESS:** From JR Kure Station (JR Kure Line), walking time to destination is 10 minutes.**INQUIRIES:** Kure Matsuri Kyokai 0823-21-0151

© This is one of the biggest festivals in Kure. Various events such as parades, stage performances and an open-air market will be held.

Thurs., May 3 – Sun., May 27**Tomonoura Tai-ami (Traditional Fish-catching)** とも うらかんこうたいあみ
鞆の浦観光鯛網**TIME:** Monday – Saturday: From 1:30 pm onward

Sundays & national holidays: j From 10:30 am onward k From 1:30 pm onward

PLACE: Sensui Island, Tomo-cho, Fukuyama City**ACCESS:** Take a bus bound for Tomonoura from JR Fukuyama Station (JR Sanyo Line) and get off at Tomonoura (a 30 min. bus ride). Then get on a ferry to Sensui Island (a 5 min. ferry ride).**TICKET FEE:** High school students and up - ¥2,800

Junior high and Elementary school students - ¥1,400

² You can ride a ferry to the island without charge if you show your ticket for the event.² Tickets will be sold at the ferry landing during the event period.

J Tickets including bus fare* are also available.

High school students and up - ¥3,300

Junior high and Elementary school students - ¥1,650

*Round trip tickets are from JR Fukuyama Station to Tomonoura

INQUIRIES: Fukuyama Kanko Convention Kyokai 084-926-2649© *Tai-ami*, net-fishing of porgy, is a traditional fish-catching method which has a history of 380 years.**Tue., May 8****Hana Matsuri at Tounji Temple** とうんじ はなまつり
洞雲寺の花祭り**TIME:** Ritual – From 10:00 am onward**PLACE:** Tounji Temple, Hatsukaichi City**ACCESS:** From JR Hatsukaichi Station (JR Sanyo Line), walking time to destination is 10 minutes.**INQUIRIES:** Tounji Temple 0829-31-2461

© This is a ceremony to celebrate Buddha's birthday.

© Tounji Marché will also be held from 10:00 am to 4:00 pm on the day.

Sat., May 12**The 27th Onomichi Noh Performance** だい かいおのみちたきぎのう
第27回尾道新能**TIME:** 6:00 pm – 8:00 pm ² The venue will open at 5:00 pm**PLACE:** Jodo-ji Temple, Amida-do, Onomichi City**ACCESS:** Take a bus from JR Onomichi Station (JR Sanyo Line) and get off Jodo-ji-shita (a 10 min. bus ride).**TICKETS:** Advance: Adults - ¥3,000 University students - ¥1,000

At the door: Adults - ¥3,500 University students - ¥1,000

² Free admission for high school students and under² Advance tickets are sold at *Fukuya* Department Stores (Hatchobori & Hiroshima Station) and EDION Hiroshima Play Guide (SUNMALL, 1F) in Hiroshima City.**INQUIRIES:** Onomichi Kanko Kyokai (Tourist Association) 0848-36-5495

Executive Committee 080-6344-3360 (Kajikawa)

© *Noh* is a traditional Japanese performing art.

Please feel free to contact the International Exchange Lounge at 082-247-9715.

E-mail: golounge@pcf.city.hiroshima.jp

April 2018

Events Held in Yamaguchi Prefecture



Sat., April 7 & Sun., April 8

Byakko (white fox) Festival at Yuda Onsen ゆだおんせんびゃっこ 湯田温泉白狐まつり

TIME: ® Apr. 7: 10:00 am – 8:00 pm ® Apr. 8: 10:00 am – 3:30 pm

PLACE: Yuda Onsen, *Inoue Koen* (park), Yamaguchi City

ACCESS: From JR Yuda Onsen Station (JR Yamaguchi Line), walking time to destination is 10 minutes.

INQUIRIES: Executive Committee 083-941-5379 (closed on Tuesdays and Wednesdays)

© Various events such as a white fox parade on the 7th, and food kiosks and a motor show on the 8th will be held.



Please feel free to contact the International Exchange Lounge at 082-247-9715.

E-mail: golounge@pcf.city.hiroshima.jp

April 2018

Municipal Facilities

G Facilities

(Address / Telephone / Open Hours / Closed / Admission Fee / URL)

Admission is generally allowed up to 30 min. prior to closing.

P Hiroshima City Forest Park & Insectarium

(173 Fujigamaru, Fukuda-cho, Higashi-ku 732-0036 / Forest Park: 899-8241, Insectarium: 899-8964 / Forest Park: 9:00 am - 4:30 pm; Insectarium: 9:00 am - 4:30 pm / Closed: Forest Park - Open every day in April; Insectarium - Wednesdays / Admission Fees for the Insectarium: Adults-¥510, Seniors & High school students-¥170, Junior High & Elementary school students-Free (Free admission for High school students on Saturdays (except on national holidays and during school holidays)) / Forest Park: <http://www.daiichibs-shitei.com/forest/> Insectarium: <http://www.hiro-kon.jp/>)

Events at the Forest Park

- ! **Night Opening & Kagura Performance** / Sat., Apr. 7 & 14 / 6:30 pm - 8:30 pm / *Shibafu Hiroba, Kyukei-jo* / Fee: Free
 - ² This will be canceled if it rains.
 - J Cherry blossom trees will be illuminated at night.
- ! **Nature Observation** / Sun., Apr. 8 / 1:00 pm - 2:00 pm / *Shibafu Hiroba* / Fee: Free
 - ² The first 50 participants will be accepted from 12:30 pm on the day.
- ! **Nature Game** / Sun., Apr. 15 / 1:00 pm - 3:00 pm / *Shibafu Hiroba* / Fee: Free
 - ² The first 50 participants will be accepted from 12:30 pm on the day.
- ! **Lecture on the Grass Whistle** / Sun., Apr. 15 / 1:00 pm - 3:00 pm / *Shibafu Hiroba, Kyukei-jo* / Fee: Free
- ! **Stamp Rally** / Sun., Apr. 22 / 9:30 am - 2:00 pm / Fee: Free
 - ² Participants will be accepted at *Shibafu Hiroba* on the day.
 - ² This will be canceled if it rains.
- ! **Flute Concert** / Sat., Apr. 28 / 1:00 pm - 1:30 pm / *Shibafu Hiroba, Kyukei-jo* / Fee: Free
- ! **A Capella Concert** / Sun., Apr. 29 / Noon - 3:00 pm / *Shibafu Hiroba, Kyukei-jo* / Fee: Free
- ! **Street Performer Show (balloon art)** / Mon., Apr. 30 / 1:00 pm - 2:00 pm / *Shibafu Hiroba, Kyukei-jo* / Fee: Free

Events at the Insectarium

- ! **Origami-making** / Sun., Apr. 8, 15 & 21 / j 10:00 am - noon k 1:00 pm - 3:00 pm
- ! **Spring Exhibition: Baby Insects Part 2** / Sat., Apr. 21 - Sun., May 6

E The Hiroshima Botanical Garden

(3-495 Kurashige, Saeki-ku 731-5156 / 922-3600 / 9:00 am - 4:30 pm / Closed on Fridays (except Apr. 13 & May 4) / Adults-¥510, Seniors & High school students-¥170, Junior High and Elementary school students-Free (Free admission for High school students on Saturdays & May 5 (except on national holidays and during school holidays)) / <http://www.hiroshima-bot.jp/>)

<Exhibitions> Exhibitions will close at 3:30 pm on their last day.

✓ **Tenji Shiryo-kan**

{ **The World of Plant Dyeing** / Sat., Mar. 10 - Thurs., Apr. 5

✓ **Tenji Onshitsu (hothouse exhibitions)**

{ **Geraniums** / Sat., Mar. 10 - Wed., Apr. 18

<Events>

- { **Sakura (Cherry Blossom) Festival** / Saturdays and Sundays in April & Apr. 30
 - | CONTENTS |
 - ✓ **Concerts** / Sun., Apr. 8, 15, 22 & 29 /
 - Noon , 2:00 pm
 - ✓ **Photo Lesson: Sakura** / Sat., Apr. 7 & Sun., Apr. 15 / 1:00 pm
 - ² Please bring a camera (or digital camera) and a tripod (if you have one) with you.
 - ✓ **Craft Workshops** / Sat., Sun. in April & Mon., Apr. 30; Thurs., May 3 & Sun., May 6 / 10:00 am - 3:00 pm / Fee: Material fee
 - ✓ **An Evening of Cherry Blossoms** / Apr. 7 (Sat.), 8 (Sun.), 14 (Sat.) & 15 (Sun.) / 4:30 pm - 9:00 pm
 - ² Entrance will be close at 8:30 pm.
 - J Night viewing of illuminated cherry blossoms while listening to a concert
 - ✓ Free shuttle bus service between JR Itsukaichi Station (north exit) and the botanical garden will be available on the night opening days.
- { **Events on Greenery Day & Botanical Garden Day** / Fri., May 4
 - J Various events such as a potted plant give away (for the first 1,000 people) and concert(s) will be held.
 - ² Admission free on this day (parking fees remain unchanged).

Please feel free to contact the International Exchange Lounge at 082-247-9715.

E-mail: golounge@pcf.city.hiroshima.jp

April 2018

☪ 5-Days Children's Museum of Culture and Science

(5-83 Moto-machi, Naka-ku 730-0011 / 222-5346 / 9:00 am - 5:00 pm / Closed on Apr. 2, 9, 16 & 23 / Admission fee for planetarium is required (see below). / <http://www.pyonta.city.hiroshima.jp/>)

Planetarium

I Admission Fee for Planetarium:

Adults-¥510, Seniors & High school students-¥250, Junior High & Elementary school students-Free ² Free admission for High school students on Saturdays (except on most national holidays and during school holidays). Admission fee for adults is ¥250 on the second Saturday of every month (except on most national holidays and during school holidays).

☪ Planetarium Programs / Adults-¥510, Seniors & High school students-¥250

☪ **Adventure to Mars (45 min.) / Sat., Mar. 10 - Sun., Sept. 2**

Time Schedule

- ✓ Weekdays: 11:00 am
- ✓ Sat., Sun., national holidays & Mar. 27 - Apr. 5: • 10:00 am , 3:00 pm

• **Feel the Earth ~ Music by Taro Hakase ~ / Until Mon., Jul. 16**

Time Schedule

- ✓ Weekdays: 2:00 pm
- ✓ Sat., Sun., national holidays & Mar. 27 - Apr. 5: • 11:00 am , 2:00 pm

☪ 360° Full Dome Show:

☪ **Emperor Penguins in Antarctica (40 min.) / Until Fri., Apr. 27 / Adults-¥510, Seniors & High school students-¥250**

Time Schedule

- ✓ Weekdays: 3:00 pm
- ✓ Sat., Sun., national holiday & Mar. 27 - Apr. 5: 1:00 pm

• **HAYABUSA2 -Return to the Universe (40 min.) / Sat., Apr. 28 - Fri., Oct. 26 / Adults-¥510, Seniors & High school students-¥250**

Time Schedule

- ✓ Weekdays: 3:00 pm
- ✓ Sat., Sun., national holiday: 1:00 pm

☪ **Refretarium: 2018 Spring Program / Sat., Mar. 17 - Fri., Jun. 8**

Time Schedule

- ✓ Weekdays: 1:00 pm
- ✓ Sat., national holiday: 4:00 pm

Admission Fee

High school students and above-¥200

² This is a program to refresh your mind and body during lunch time while watching the starry sky and listening to music. Although the main target of this program is adults, anyone who wishes to rejuvenate themselves is welcome.

☪ **Starry Sky Tour / 4:00 pm - 4:50 pm / Adults-¥510, Seniors & High school students-¥250**

☪ **Dwarf Planets - Solar System Exploration / Sundays until Sun., Apr. 15**

- Hayabusa2 has been reaching its destination, the Asteroid "Ryugu" / Sundays between Sun., Apr. 22 and Sun., Jul. 15

Events

☪ **Exhibition: Shape of the Universe I / Sat., Apr. 14 - Sun., Jun. 3 / 3F, Kikaku Tenji Hall / Free admission**

☪ **Craft Workshops / Apr. 8 (Sun.), 15 (Sun.), 22 (Sun.) & 28 (Sat.) / 1:00 pm - 3:30 pm / For children under elementary school entry age, elementary school students (1st - 3rd grade) and their guardians / 3F, Kosaku-shitsu (Craft Room) / Fee: ¥30 for materials**

² Each day's program is different. For more information, please contact the museum.

☪ **Science Show: Mystery of Radio Wave / Sun., Apr. 8 & Sat., Apr. 14 / • 1:30 pm - 2:00 pm , 3:00 pm - 3:30 pm / 1F, Science Studio / Fee: Free**

☪ The events listed below require advance applications.

To APPLY: Send an *ofuku-hagaki* (return postcard) to the museum, postmarked by each event's application deadline with the following information: applicants' names, address, telephone number, school year and the event name and time you wish to attend.

Science Workshop

☪ **Flight Science j : Principles of Gliders & Make a Large-sized Glider / 飛行の科学 よく飛ぶ大型グライダーを飛ばしてみよう ("Hikou no kagaku: Yoku tobu ogata glider wo tobashite-miyou") / Mon., Apr. 30 / j 9:30 am - noon k 1:30 pm - 4:00 pm / For elementary (3rd - 6th grade) & junior high school students / Fee: ¥300 / Closing date for applications: Mon., Apr. 16 ² 16 people will be selected at random by a drawing of names for each time slot.**

☪ **Observation: Creatures of the Moto-Ujina Shore / 海の生き物と友だちになろう ("Umi no ikimono to tomodachi ni narou") / Sun., May 13 / 1:00 pm - 4:00 pm / Meeting Place: Grand Prince Hotel Hiroshima / For elementary school students / Fee: ¥200 / Closing date for applications: Sun., Apr. 29 ² 20 people will be selected at random by a drawing of names.**

Please feel free to contact the International Exchange Lounge at 082-247-9715.

E-mail: golounge@pcf.city.hiroshima.jp

April 2018

Craft Workshops

® **Stained-glass / ステンドグラス 作り**
 ("Stained-glass zukuri") / Sat., Apr. 28 / j 9:30 am - noon
 k 1:30 pm - 4:00 pm / For elementary (4th - 6th
 grade) & junior high school students / Fee:
 ¥1,500 / Closing date for applications: Sat., Apr.
 14 ² 8 people will be selected at random by a
 drawing of names for each time slot.

J Hiroshima City Asa Zoological Park
 (Asa-cho Dobutsuen, Asakita-ku 731-3355 / 838-
 1111 / 9:00 am - 4:30 pm / Closed on Thursdays
 (except Apr. 5 & May 3) / Adults-¥510, Seniors
 & High school students- ¥170, Junior High &
 Elementary school students-Free /
<http://www.asazoo.jp/>)

○ **Make a Cell Phone Strap with a Deer Horn /**
 Sun., Apr. 29 / 9:00 am - 3:00 pm / *Yagai*
 Stage ² The first 1,000 participants will be
 accepted on the day.

○ **Try to Ride on a Mini Carp Shinkansen /**
 Mon., Apr. 30 / • 11:00 am - noon , 2:00
 pm - 3:00 pm / *Okugai Hiroba* ² The first
 300 participants for each time slot will be
 accepted on the day. ² This will be canceled
 if it rains.

○ **Frog Observation / Wed., May 2 / j 11:00 am**
 k 11:30 am ² The first 25 participants for
 each time slot will be accepted from 9:00 am
 at the main entrance.

◎ Watch as hibernating frogs dig out of the
 ground.

○ **Sheep Shearing and Wool Spinning / Thurs.,**
 May 3 & Fri., May 4

® **Demonstration of Sheep Shearing /**
 j 10:30 am k 1:30 pm / *Peechiku Park*

® **Learn How to Spin Wool / 10:00 am - noon**
 / *Yagai Stage* ² The first 90 participants
 will be accepted from 9:00 am at the *Yagai*
 Stage for each day.

○ **Backyard Guide Tour / Sat., Apr. 7, 14 & 21 /**
 j 11:00 am k 1:30 pm / Please gather near
 the entrance at 9:00 am on each activity day.
 The first 10 - 40 people can participate. The
 number of participants will differ depending
 on where you visit. We will explore a
 different place on each trip.

○ **Meet the Black Rhinoceros named Hana /**
 Sat., Apr. 28 / • 1:30 pm , 1:45 pm
² Participation tickets will be distributed
 from 9:00 am at the main entrance until 10
 spots are filled for each time slot.
³ The black rhinoceros, *Hana*, is the world's
 oldest living black rhinoceros.

○ **Giant Salamander Facility Tour / Sat., Apr. 28**
 / 11:00 am - 11:45 am ² Participation
 tickets will be distributed from 9:00 am at
 the main entrance until 20 spots are filled.

U Numaji Transportation Museum
(Hiroshima City Transportation Museum)
 (2-12-2 Chorakuji, Asaminami-ku 731-0143 / 878-
 6211 / 9:00 am - 5:00 pm / Closed on Mondays
 (except Apr. 30), May 8, 9 & 10 / Adults-¥510,
 Seniors & High school students-¥250, Junior
 High school students and under-Free
 / <http://www.vehicle.city.hiroshima.jp>)

Ž **Special Exhibition: Shinkasen Components /**
 Wed., Mar. 21 - Sun., May 20 / 9:00 am - 5:00
 pm

ê **Special Exhibition-Related Events** ê

^a **Vehicle Land: Playing with Toy Vehicles /**
 Sat., Apr. 21 & Sun., Apr. 22; Sat., May 19 &
 Sun., May 20 / 1:00 pm - 4:00 pm / 1F,
Tamokuteki Hall / Fee: Free

^a **Children's Craft Workshops / May 3**
 (Thurs.), 4 (Fri.), 5 (Sat.) & 20 (Sun.) / 1:00
 pm - 3:30 pm / For preschoolers, elementary
 school students and their guardians / 1F,
 Craft Room / Fee: ¥50 for materials
² The first 100 groups for each time slot can
 participate on the day.

^a **Craft Workshop: Make a Shinkasen with a**
Milk Carton / Sat., May 19 / j 1:00 pm -
2:00 pm k 2:30 pm - 3:30 pm / Fee: ¥50
To APPLY: Send an *ofuku-hagaki* (return
 postcard) with all applicant's name,
 address, telephone number, school name &
 grade, time (• or ,) you wish to attend
 and the event name ^{つくろ}ろう! ^{しんかんせん}新幹線
 ("Tsukurou! shinkansen") to the museum by
 Wed., May 9. 30 groups will be selected at
 random by a drawing of names for each
 time slot.

Other Events held in April

Ž **Science Show: Experiment Show with Lights**
 / Sat., Apr. 14 & Sun., Apr. 15 / j 11:30 am -
 11:50 am k 1:30 pm - 1:50 pm f 2:30 pm -
 2:50 pm / 1F, *Tamokuteki Hall* / Fee: Free

Ž **Exhibition on a Streetcar Exposed to the A-**
Bomb / Sat., Apr. 21 / j 11:00 am - noon
 k 1:30 pm - 3:00 pm / *Okugai Hiroba* (outdoor
 open space) / Fee: Free
² Exhibition will be canceled if the weather is
 bad.

Please feel free to contact the International Exchange Lounge at 082-247-9715.

E-mail: golounge@pcf.city.hiroshima.jp

April 2018

- Ž **Children's Craft Workshops** / Sun., Apr. 8, 15, 22, 29 & Mon., Apr. 30 / 1:00 pm - 3:30 pm / For preschoolers, elementary school students and their guardians / 1F, Craft Room / Fee: ¥50 for materials
 ² The first 120 groups for each time slot can participate on the day.
- Ž **Craft Workshop for Adults: Corinth Game** / Sat., Apr. 28 / 10:00 am - 1:00 pm / 1F, Craft Room / For 16 year olds and up / Fee: ¥600 for materials
To APPLY: Send an *ofuku-hagaki* (return postcard) with applicant's name, address, telephone number, age, event date and the event name おとな こうさくきょうしつ 大人の工作教室 コリントゲーム ("Otona no kousaku kyoushitsu: corinth game") to the museum by Wed., Apr. 18. 15 people will be selected at random by a drawing of names.

Other Events held in May

- Ž **Science Show: Experiment Show with Electricity** / Sat., May 12 & Sun., May 13 /
 j 11:30 am - 11:50 am k 1:30 pm - 1:50 pm
 f 2:30 pm - 2:50 pm / 1F, Tamokuteki Hall / Fee: Free
- Ž **Exhibition on a Streetcar Exposed to the A-Bomb** / May 3 (Thurs.), 4 (Fri.), 5 (Sat.) & 19 (Sat.) / j 11:00 am - noon k 1:30 pm - 3:00 pm / Okugai Hiroba (outdoor open space) / Fee: Free ² Exhibition will be canceled if the weather is bad.
- Ž **Children's Craft Workshops** / Sun., May 6, 13 & 27 / 1:00 pm - 3:30 pm / For preschoolers, elementary school students and their guardians / 1F, Craft Room / Fee: ¥50 for materials
 ² The first 100 groups for each time slot can participate on the day.

Please feel free to contact the International Exchange Lounge at 082-247-9715.

E-mail: golounge@pcf.city.hiroshima.jp

April 2018

図書だより

2018年4月

今月のおすすめ図書

ことばはいらない ~ Maru in Michigan ~

ジョンソン 祥子 / 著 (新潮社, 2013年)

またたび:ふらり気ままなちょい旅のススメ

小道 迷子 / 著 (竹書房, 2013年)

ニッポン在住ハーフな私の切実で笑える100のモンダイ

サンドラ・ヘフェリン / 原作, ヒラ マツオ / 漫画 (KADOKAWA, 2013年)

ハーフが美人なんて妄想ですから!!:困った「純ジャパ」との闘いの日々

サンドラ・ヘフェリン / 著 (中央公論新社, 2012年)

新入社員は外国人:爆笑、驚愕、号泣の異文化クライシス!

ヒラ マツオ / 漫画, 小平 達也 / 監修 (PHP エディターズ・グループ, 2011年)

本のリクエストなど図書コーナーに関するご要望はスタッフまでお気軽にお申し出ください。

¥◎

図書コーナー

場所: 広島国際会議場 1F・国際交流ラウンジ (平和記念公園内)
TEL (082)247-9715

開館時間: 9:00am - 7:00pm (4月1日から9月30日まで)
9:00am - 6:00pm (10月1日から3月31日まで)

休館日: 12月29日 ~ 1月3日

貸出: 図書は2週間を期限として、1回3冊まで借りることができます。

初めて利用する際には、住所や在留期間(外国人の方)を証明するもの(運転免許証・学生証・パスポート・在留カードなど)を提示して下さい。



Please feel free to contact the International Exchange Lounge at 082-247-9715.

E-mail: golounge@pcf.city.hiroshima.jp

April 2018

Assisting with International Cooperation with Used Stamps & PET Bottle Caps

The International Exchange Lounge collects used stamps to assist international cooperation activities. Through the volunteer groups, JOCS*, the collected stamps are sold to collectors to raise money. With the profit, items such as milk and medicine are purchased and doctors as well as nurses are dispatched throughout Asia and other continents. We also collect PET bottle caps in order to support the "Ecocap Action". The sales profits obtained by recycling caps are donated to the Japan Committee "Vaccines for the World's Children" (JCV).

*JOCS: Japan Overseas Christian Medical Cooperative Service

HOW TO COLLECT:

- © **Stamps** ☪ When you cut stamps from envelopes, please leave 5 mm of paper around them. It is not necessary to remove them from the envelope. Torn or folded stamps cannot be accepted.
- © **PET Bottle Caps** ☪ Only PET bottle caps for drinks or mineral water are accepted. Please wash the caps and tear off the sticker if it has one. This is in order to avoid damaging the recycling machines. Things such as metal caps and pull-top tabs cannot be accepted.

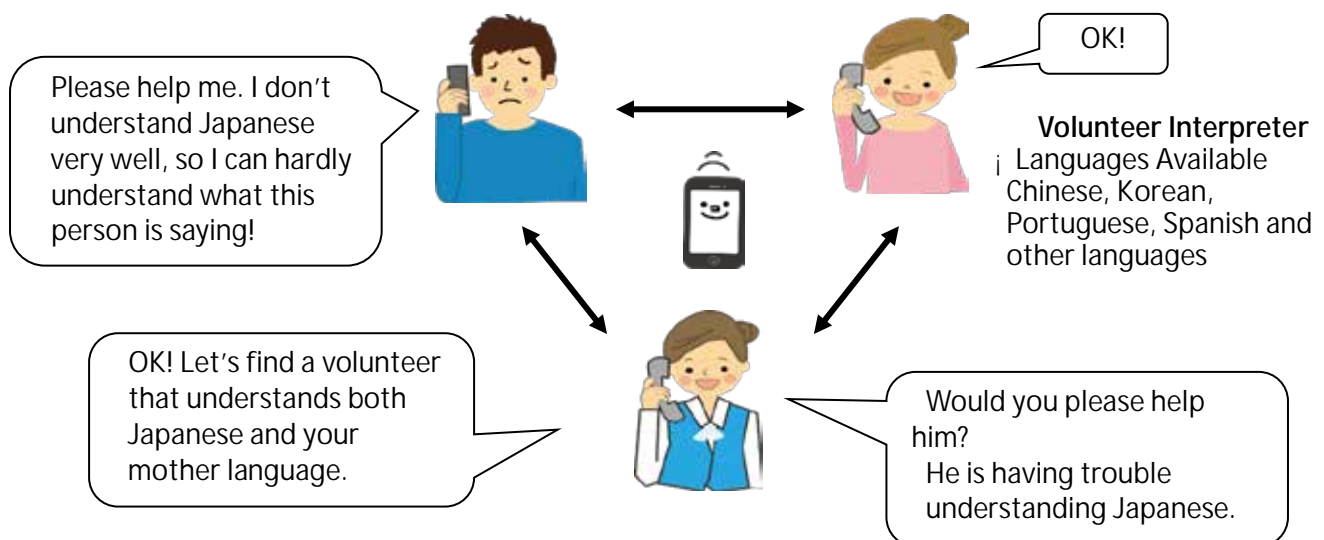
Trio-Phone Service (Multilingual Interpretation over the Telephone)



What is Trio-Phone ?

Trio-Phone Service allows three people to have a conversation at the same time through the telephone. If you are having difficulties communicating in Japanese, call the International Exchange Lounge (082-247-9715).

A volunteer interpreter will help you through the Trio-Phone Service!



For further information, please ask the staff at the International Exchange Lounge.

Please feel free to contact the International Exchange Lounge at 082-247-9715.

E-mail: golounge@pcf.city.hiroshima.jp

March 2018

Garbage Disposal Information

Separate garbage properly and take it to the collection site by 8:30am on the designated day. Please do NOT take garbage to the site on the night before. Garbage collection days vary depending on where you live and the category of the refuse. For further details, consult your local ward office or your neighbors to be sure of the proper disposal method. "Hiroshima 8", a handbook on how to separate garbage, and "Hiroshima City Garbage Disposal Guidelines for the 2017 fiscal year", a garbage chart with schedules of garbage collection days, are available at ward offices, branch offices and community halls. The Handbook and Guidelines are translated into English, Spanish, Portuguese, Chinese and Korean. These are also available at the International Exchange Lounge (International Conference Center Hiroshima), so please ask the staff if you need them.

HIRO CLUB NEWS is published monthly and provides essential and entertaining information about life in Hiroshima City. It is available in print at the International Exchange Lounge, and online at our website: <http://www.pcf.city.hiroshima.jp/ircd/english/hiroclubnews/> Selected information is also available in other languages including Chinese, Portuguese and Spanish.

HIRO CLUB NEWS は広島的生活情報やイベント等の情報を掲載している月刊情報誌です。国際交流ラウンジにて配布しています。当課ホームページ(<http://www.pcf.city.hiroshima.jp/ircd/english/hiroclubnews/>)にも掲載しています。英語版の情報の一部を抜粋した中国語・ポルトガル語・スペイン語版も作成しています。

* * * * *

Edited and published by the Hiroshima Peace Culture Foundation
International Affairs Department, International Relations and Cooperation Division
Tel: (082) 242-8879, Fax: (082) 242-7452, E-mail: internat@pcf.city.hiroshima.jp
International Exchange Lounge
Tel: (082) 247-9715, E-mail: golounge@pcf.city.hiroshima.jp
Website: <http://www.pcf.city.hiroshima.jp/ircd/english/>

編集・発行 公益財団法人広島平和文化センター国際部国際交流・協力課 国際交流ラウンジ
〒730-0811 広島市中区中島町1番5号