

Hiro Club News



Chabudai : ちゃぶ台

Japanese tatami rooms were originally used without any large tables. Meals were eaten off small ornate trays with legs (*zen*), which were placed in front of each person. You can still experience this style of eating at formal meals at inns. *Zen* are designed to stack up for easy carrying and storage, even when loaded with dishes.

Low, round *chabudai*, resembling Western coffee tables, were developed after World War I with folding or screw legs. The standard size was designed for a family of four to sit around. Many different shapes and sizes, particularly rectangular, also came into use for tatami rooms in houses, inns and restaurants, generally with space for six people. Even today, they tend to be very low, leaving very little space for legs. (Abstracted from 『日本の衣食住』まるごと事典』, p87, IBCパブリッシング)

Since the end of World War II, with the westernization of Japanese lifestyles, families that use Western tables have increased, and those using *chabudai* as dining tables have decreased. However, *chabudai* remains as perennial favorites for their quaint atmosphere. As long-term use gives, additional charm to *chabudai*, antique *chabudai* are also popular.

May 2018

May 2018

- ❖ **Community Connections**
- ❖ **City Office Notices**
- ❖ **Hiroshima Peace Culture Foundation News**
- ❖ **Movie Theaters**
- ❖ **Bilingual TV Programs**
- ❖ **Concerts & Plays**
- ❖ **Museums**
- ❖ **Sports**
 - Hiroshima Toyo Carp Schedule 2018
 - Sanfrecce Hiroshima FC Game Schedule 2018
 - Hiroshima Dragonflies 2017 – 2018 B2 League
- ❖ **Events**
 - Seasonal Event Information
 - Municipal Facilities
- ❖ **Japanese Language Classes**
- ❖ **Lounge & Library**
 - Library News
 - Free Back Issues of Newspapers & Magazines
 - Trio-phone Service (multilingual interpretation using the telephone)
 - Garbage Disposal

**Hiroshima Peace Culture Foundation
International Exchange Lounge**

1-5 Nakajima-cho, Naka-ku, Hiroshima 730-0811
E-mail: golounge@pcf.city.hiroshima.jp
Tel. 082-247-9715 Fax. 082-242-7452

★ Visit the HIRO CLUB NEWS WEBSITE for information online. ★
URL: <http://www.pcf.city.hiroshima.jp/ircd/joho/hiroclub%2001.html>

COMMUNITY CONNECTIONS



***KAGURA* – DANCING WITH THE DEITIES**

Andrew Dempster

Atop an overturned tub and with a branch of the sacred *sakaki* tree in hand, Ame-no-Uzume, (the Shinto goddess of dawn, mirth and revelry) danced ecstatically, stomped her feet and revealed herself to the feverish amusement of the other gathered *kami* (gods), who laughed and reveled at the sight. This peaked the curiosity of the sun goddess Amaterasu, who had shut herself away in a rock cave of heaven after her brother Susanoo-no-Mikoto’s infuriating misdeeds. Upon doing so the world was plunged into darkness.

Intrigued by the commotion outside, Amaterasu opened the cave door and was met with boisterous singing and laughter. With the cave finally open, the gathered *kami* had the perfect opportunity to grab the sun goddess and restore life-giving sunlight to the world.

The *kami*’s clever ploy to entice Amaterasu out of hiding is recounted in the *Kojiki* (Records of Ancient Matters, c.712 CE) and the *Nihongi* (Chronicles of Japan, 720 CE). Despite differing details, both versions of this tale state that it was a result of Ame-no-Uzume’s wild dancing that Amaterasu emerged from the cave.

This tale is hailed as the origin of *Kagura*. Meaning “god-entertainment (神楽)”

Kagura is a ceremonial dance said to be rooted in shamanic possession rites apparently derived from the events described above. It predates Noh theatre and has had a particular influence on other forms of dance and theatre styles, such as Kabuki. There are many variations that have since evolved, from highly ritualistic *miko-kagura*, to highly theatrical *sato-kagura*.

It continues to flourish all over Japan, but perhaps more so in Hiroshima and Shimane Prefectures.

Kagura centres around powerful dances set to rhythmic music performed by flutes and taiko drums, and chanting, with stories drawing on Japanese myths and legends, pitting good against evil; man against demon. With plot twists and big reveals, passionate battles and heartbreak, Kagura is folk culture gold. It features stunning handcrafted masks made from Japanese *sekishu-washi* paper, immense wigs, elaborately designed handmade costumes, and in plays such as Yamata-no-Orochi, props for an eight-headed serpent! Kabuki-esque stagecraft tricks, such as costume quick-changes (*hayagawari*), will leave you bewildered.



Eight-headed serpent in Yamata-no-Orochi

From April 4 to December 26, there will be Kagura performances held most Wednesdays at the Hiroshima Prefectural Citizen’s Culture Center. Tickets go on sale on the day of the performance from 17:30, with doors opening at 18:00. Performances start at 19:00 and usually last until around 20:45. Tickets cost ¥1,000. The Prefectural Art Museum also hosts regular performances of Hiroshima Kagura specifically for overseas visitors that feature an introduction in English, a screen next to the stage with a simple summary of each act, and an interpreter who will help with the Q&A session at the end. Moreover, if you’re planning a day trip, consider Kagura-Monzen-Toji-Mura located in the Akitakata district of northern Hiroshima, which is shrouded in the mystical and ancient and famous for its weekly performances of Kagura.

City Office Notices

City Office Notices contains selected information from the Hiroshima City Newsletter, *ひろしま市民と市政 Hiroshima Shimin to Shisei*. City Office Notices is published twice a month and available in print at the International Exchange Lounge, and online at our website: <http://www.pcf.city.hiroshima.jp/ircd/english/hiroclubnews/>

May 1, 2018

Topics

- { Sister/Friendship Cities Event, Daegu Day
- { Free Back Issues of Newspapers & Magazines
- { Free Admission for Children on May 5 (Children's Day)
- { Municipal Housing Available
- { Garbage Collection on May 3, 4 & 5
- { Hiroshima City Consultation Service

Sister/Friendship Cities Event, Daegu Day

(Free, no reservation required)

姉妹・友好都市の日の催し「大邱の日」(P6)

Daegu Day Memorial Ceremony and Stage Performance

DATE & TIME: Thursday, May 3 (start from 12:30 pm onwards)

PLACE: Flower Festival, Carnation Stage

Daegu *Madan* (Introduction to Daegu exhibition, Korean traditional attire wearing experience, Korean foods)

DATE & TIME: Thursday, May 3 – Saturday, May 5 (11:00 am – 6:30 pm)

PLACE: The green zone on the Peace Blvd. in front of the NHK building

INQUIRIES: International Cooperation & Exchange Division, Peace Culture Foundation
Tel. 242-8879 Fax. 242-7452

Free Back Issues of Newspapers & Magazines

世界の新聞、雑誌のバックナンバー無料配布(P6)

DATE & TIME: Sunday, May 13 – Sunday, May 27 9:00 am – 7:00 pm

PLACE: International Exchange Lounge located in the International Conference Center
Hiroshima in Peace Memorial Park (1-5 Nakajima-cho, Naka-ku)

CONTENT: Newspapers and magazines issued between November 2016 and April 2017 will be available for free on a first-come, first-serve basis. Up to 10 newspapers and 5 magazines per person.

INQUIRIES: International Exchange Lounge, Peace Culture Foundation
Tel. 247-9715 Fax. 242-7452

Free Admission for Children on May 5 (Children's Day)

こどもの日 文化施設・スポーツ施設無料開放(子ども料金対象者)(P5)

WHO: Children (elementary, junior high and high school students)

FREE ADMISSION FACILITIES:

(A) Peace Memorial Museum, Hiroshima Castle, Museum of History and Traditional Crafts (*Kyodo Shiryo Kan*), the Planetarium at 5-Days Children's Museum of Culture & Science (*Kodomo Bunka Kagaku Kan*), Ebayama Meteorological Museum (*Kisho Kan*), Cinematographic & Audio-Visual Library (*Eizo Bunka Library*), Museum of Contemporary Arts (*Gendai Bijutsu Kan*), Health Science Museum (*Kenko Kagaku Kan*), Forest Park (*Shinrin Koen*) Insectarium, Asa Zoo, Botanical Garden and Numaji Transportation Museum (*Numaji Kotsu Museum*)

❖Elementary and junior high school students enter free of charge throughout of the year for the facilities listed in (A).

(B) Ward Sports Centers, Yoshijima Indoor Swimming Pool, Shinonome Indoor Swimming Pool, Dejima Indoor Swimming Pool, Ujina Gymnasium, Yuki Gymnasium, Kurhaus Yunoyama (only elementary school children and younger) and *Oshiba-koen* Transportation Land Go-cart

INQUIRIES: *Kodomo Katei Shien Ka* (Family Support Division) Tel. 504-2161 Fax. 504-2727

Municipal Housing Available

市営住宅の入居者募集(P5)

Qualification guidelines and the list of municipal houses are available at the *Kenchiku Ka* (Building Division) of your local ward office, branch office or at the Citizens Service Corner. Please apply at one of the following divisions or prefectural associations of building maintenance between Wednesday, May 9 and Friday, May 11.

INQUIRIES: *Kenchiku Ka* (Building Division), Ward Office

Ward Office	Telephone	Fax	Ward Office	Telephone	Fax
Naka	504-2578	541-3835	Asaminami	831-4954	877-2299
Higashi	568-7744	262-6986	Asakita	819-3937	815-3906
Minami	250-8959	252-7179	Aki	821-4928	822-8069
Nishi	532-0949	232-9783	Saeki	943-9744	923-5098

Garbage Collection on May 3 & 4

5月3日(祝・木)、4日(祝・金)の家庭ゴミの収集(P4)

Combustibles, recyclable plastic and PET bottles will NOT be collected on May 3 and 4. However, recyclable garbage, toxic garbage, plastics other than recyclable plastic such as containers and packaging, and incombustible garbage will be collected according to schedule.

INQUIRIES: *Gyomu Daiichi Ka* (Operation Division I) Tel. 504-2220 Fax. 504-2229

Hiroshima City Consultation Service

Counseling is generally only available in Japanese.

暮らしに役立つ相談窓口(『市民と市政』2018.4.15号 P3)

in Shimin Sodan Center (Citizens Consultation Center)

The *Shimin Sodan Center* (Citizens' Consultation Center) provides counselling services on the following issues free of charge. Strict confidentiality is assured.

City Government	Comments and requests for the city government (Also accepted at <i>Kuseichosei Ka</i> , ward offices)
Civil affairs*	Daily legal issues including inheritance and family relationships
Traffic accidents*	Calculating how much compensation you can claim for your damage; how to claim on your automobile liability insurance
Legal affairs** (with a lawyer)	Legal affairs except for criminal cases

LOCATION: Main office on the ground floor of City Hall

TIME&DAY: 8:30 am – 5:00 pm, Monday – Friday

CLOSED: Saturdays, Sundays, national holidays, August 6, Year-end and New Year's holidays

INQUIRIES: *Shimin Sodan Center* (Citizens Consultation Center) Tel. 504-2120 Fax. 504-2121

* For individual consultations regarding civil affairs and traffic accidents, please come to the Center by 3:00 pm.

** You are only able to make an appointment with a lawyer at the Center after having first had an individual Civil consultation.

Comments and requests for the city government are also accepted by e-mail (kocho@city.hiroshima.lg.jp), postal mail (Address: *Shimin Sodan Center* 7308586), and fax (504-2121).

in Regular Counseling at Ward Offices

The following counseling services are free and confidential. Counseling sessions are up to 30 minutes per person.

TIME&DAY: 1:00 pm to 4:00 pm

(except counseling for threats & black mail (1:00 pm – 3:00 pm))

Counseling	Naka	Higashi	Minami	Nishi	Asa-minami	Asa-kita	Aki	Saeki
Traffic accidents	1 st Tue.	2 nd Tue.	4 th Tue.	3 rd Tue.	1 st Fri.	3 rd Fri.	4 th Fri.	2 nd Fri.
Threats / blackmail	–	1 st Tue.	3 rd Tue.	4 th Tue.	3 rd Thu.	2 nd Thu.	1 st Thu.	4 th Thu.
Human rights	2 nd Wed.	3 rd Wed.	1 st Wed.	3 rd Thu.	2 nd Thu.	4 th Thu.	2 nd Thu.	2 nd Thu.

Administrative counseling	2 nd Fri.	1 st Fri.	4 th Fri.	3 rd Fri.	1 st Wed.	3 rd Wed.	2 nd Wed.	4 th Wed.
Legal counseling by <i>Shiho-shoshi</i> (Solicitor)	1 st Thu.	3 rd Thu.	2 nd Thu.	4 th Thu.	3 rd Wed.	2 nd Wed.	4 th Wed.	1 st Wed.
Indication of ownership registration & land property affairs	1 st Mon.	2 nd Mon.	3 rd Mon.	4 th Mon.	2 nd Fri.	4 th Fri.	1 st Fri.	3 rd Fri.
Procedures for acquiring governmental authorization	1 st Wed.	2 nd Thu.	4 th Thu.	2 nd Tue.	4 th Wed.	1 st Thu.	3 rd Tue.	2 nd Tue.
Tax	–	–	–	–	–	–	–	2 nd Mon.
Pension and labor	3 rd Tue.	–	–	–	–	–	–	–
Comments and requests for the city government	Mon. – Fri.							

TO APPLY:

Reservations are required for each counseling session. Reservations are accepted from 8:30 am by telephone on each consultation day at each ward office. (For traffic accident counseling and counseling on indication of ownership registration & land property affairs reservations are accepted anytime during business hours until 10:00 am on the consultation day.) 6 people (4 people for threats / blackmail counseling) per day will be accepted for each service (first-come first-served).

- Counseling is 30 minutes/person.

- Counseling at ward offices is not available on Saturdays, Sundays, national holidays, August 6, August 13 – August 16 and December 28 – January 4, but comments and requests for the city government are available on August 13-16, December 28 and January 4.

INQUIRIES & RESERVATIONS:

Ward Office	Telephone	Fax	Ward Office	Telephone	Fax
Naka	504-2543	541-3835	Asaminami	831-4925	877-2299
Higashi	568-7703	262-6986	Asakita	819-3903	815-3906
Minami	250-8933	252-7179	Aki	821-4903	822-8069
Nishi	532-0925	232-9783	Saeki	943-9706	923-5098

Hiroshima Peace Culture Foundation News

Event schedules are subject to change. Please contact event organizers to confirm listed information.

May 2018

CIR Question & Answer Day

Are you looking for advice about Hiroshima?

Come in for a chat with our CIR, Andrew Dempster!

DATE & TIME: Wednesday, May 23 1:30 pm – 3:30 pm

PLACE: International Exchange Lounge

(International Conference Center Hiroshima 1F, 1-5 Nakjima-cho, Naka-ku)

RESERVATIONS ARE REQUIRED: Reservations can be made in person or by telephone at the International Exchange Lounge Tel. 247-9715 (Lounge open hours 9:00 am – 7:00 pm)

INQUIRIES: International Exchange Lounge Tel. 247-9715 Fax. 242-7452

Sister/Friendship Cities Event, Daegu Day

(Free, no reservation required)

Daegu Day Memorial Ceremony and Stage Performance

DATE & TIME: Thursday, May 3 (start from 12:30 pm onwards)

PLACE: Flower Festival, Carnation Stage

Daegu Madan (Introduction to Daegu exhibition, Korean traditional attire wearing experience, Korean foods)

DATE & TIME: Thursday, May 3 – Saturday, May 5 (11:00 am – 6:30 pm)

PLACE: The green zone on the Peace Blvd. in front of the NHK building

INQUIRIES: International Cooperation & Exchange Division Tel. 242-8879 Fax. 242-7452

Free Back Issues of Newspapers & Magazines

DATE & TIME: Sunday, May 13 – Sunday, May 27 9:00 am – 7:00 pm

PLACE: International Exchange Lounge located in the International Conference Center Hiroshima in Peace Memorial Park (1-5 Nakajima-cho, Naka-ku)

CONTENT: Newspapers and magazines issued between November 2016 and April 2017 will be available for free on a first-come, first-serve basis. Up to 10 newspapers and 5 magazines per person.

INQUIRIES: International Exchange Lounge Tel. 247-9715 Fax. 242-7452

The Museum Open from 8:30am to 8:00pm on May 3, 4, 5

The museum is open from 8:30am to 8:00pm on May 3, 4, 5. (Entrance is closed at 7:30pm.)

INQUIRIES: Hiroshima Peace Memorial Museum Tel. 241-4004



The **International Conference Center Hiroshima** is used for various purposes such as exhibitions and parties. Its large auditorium, which can accommodate 1,504 people, is ideal for concerts, lectures, and domestic and international conferences. The ICCH also includes the International Conference Hall, as well as small, medium, and large conference rooms. In all, the ICCH has five floors, three above ground and two basement floors.
Tel. 242-7777 (9:00 am – 9:00 pm) URL: <http://www.pcf.city.hiroshima.jp/icch/english.html>

Please feel free to contact to the International Exchange Lounge at 082-247-9715.

E-Mail: golounge@pcf.city.hiroshima.jp

May 2018

Movie Theaters

May 2018



Here is a general list of movies being shown in theaters around Hiroshima. Due to unpredictable changes in scheduling, listings are subject to change without notice. Foreign films are usually in their original language with Japanese subtitles. When not specified, the admission is **¥1,800** for adults. Theaters offer various kinds of admission discount services, so please inquire at each theater for more information.

SALON CINEMA

[Hiroshima Toei Plaza Bldg. 8F, 16-10 Hatchobori, Naka-ku / Tel: 082-962-7772 / URL: <http://www.johakyu.co.jp/>]

Until May 10 **Dangal** / '16 India
 Until May 10 **Maudie** / '16 Canada, Ireland
 Until May 11 **Downsizing** / '17 USA
 Until May 11 **Mark Felt: The Man who Brought down the White House** / '17 USA
 Until May 18 **Coco** / '17 USA
 From May 11 **Molly's Game** / '17 USA

HATCHOZA

[Fukuya Department Store Hatchobori 8F, 6-26 Ebisu-cho, Naka-ku / Tel: 082-546-1158 / URL: <http://www.johakyu.co.jp/>]

Until May 11 **The Greatest Showman** / '17 USA
 Until May 11 **The Post** / '17 USA
 From Apr. 27 **Call Me by Your Name** / '17 Italy, France, Brazil, USA

YOKOGAWA CINEMA Tel : 231-1001

[3-1-12 Yokogawa-cho, Nishi-ku / Tel: 082-231-1001 / URL: <http://yokogawa-cine.jugem.jp/>]

May 15 – 31 **Whiskey Galore** / '16 UK
 (except May 25 & 27)
 May 8 – 21 **Centaur** / '17 Kyrgyzstan, France, Germany, Netherlands, Japan
 May 15 – 26 **香港製造 / Made in Hong Kong** / '97 Hong Kong
 May 22 – Jun. 15 **Lucky** / '17 USA
 (except May 27)

AEON CINEMA HIROSHIMA

[Hiroshima Danbara Shopping Center 6F, 1-3-52 Danbara-minami, Minami-ku / Tel : 082-261-3770 / URL: <http://www.aeoncinema.com/cinema/hiroshima/>]

From Apr. 20 **Ready Player One** / '18 USA
 From May 18 **Rampage** / '18 USA
 From May 26 **Phantom Thread** / '17 USA

From Jun. 1 **Deadpool 2** / '18 USA
 Jun. 23 – Jul. 6 **Aus dem Nichts / In the Face** / '17 Germany

109 CINEMAS

[Alpark 3F (north bldg.), 4-7-1 Kusatsu-minami, Nishi-ku / Tel: 05700-002-109 / URL: <http://www.109cinemas.net/Hiroshima>]

From Apr. 13 **Pacific Rim Uprising** / '18 USA
 From Apr. 20 **Ready Player One** / '18 USA
 From Apr. 27 **Avengers: Infinity War** / '18 USA
 From May 18 **Rampage** / '18 USA
 From May 25 **Isle of Dog** / '18 USA
 From Jun. 1 **Deadpool 2** / '18 USA
 From Jun. 15 **Maze Runner: The Death Cure** / '18 USA

TOHO CINEMAS MIDORII

[Fuji Grand 3F, 1-5-2 Midorii, Asaminami-ku / Tel : 082-831-8060 / URL: <http://www.tohotheater.jp/>]
 Adults-¥1,800, University students-¥1,500, From preschoolers (3 years old and under) to High school students-¥1,000,

From Apr. 20 **Ready Player One** / '18 USA
 From Apr. 27 **Avengers: Infinity War** / '18 USA
 From May 4 **I, Tonya** / '17 USA
 From May 4 **12 Strong** / '17 USA
 From May 18 **Rampage** / '18 USA
 From Jun. 15 **Wonder** / '17 USA

HIROSHIMA WALD 11

[AEON Mall Hiroshima Fuchu 4F, 2-1-1 Osu, Fuchu-cho, Aki-gun / Tel : 082-561-0600 / URL: <http://kinezo.jp/pc/wald11>]

From Feb. 16 **The Greatest Showman** / '17 USA
 From Mar. 30 **The Post** / '17 USA
 From Apr. 20 **Ready Player One** / '18 USA
 From Apr. 27 **Avengers: Infinity War** / '18 USA
 From May 4 **12 Strong** / '17 USA
 From May 18 **Rampage** / '18 USA
 From May 25 **All the Money in the World** / '17 USA

Please feel free to contact the International Exchange Lounge at 082-247-9715.

E-mail: golounge@pcf.city.hiroshima.jp

May 2018

From Jun. 1 **Deadpool 2** / '18 USA
 From Jun. 15 **Maze Runner: The Death Cure**
 / '18 USA
 From Jun. 29 **Solo: Star Wars Story** / '18 USA

2 Movie Showings at 10 am in the Morning

May 4 – 10 **Shane** / '53 USA
 May 11 – 24 **Apocalypse Now** / '79 USA
 May 25 – Jun. 7 **All That Jazz** / '79 USA
 Jun. 8 – 21 七人の侍 / **Shichi-nin no samurai** / '54 Japan
 Jun. 22 – Jul. 5 用心棒 / **Youjinbo** / '61 Japan
 Jul. 6 – 19 椿三十郎 / **Tsubaki Sanjuro**
 / '62 Japan
 Jul. 20 – 26 **Singin' in the Rain** / '52 USA
 Jul. 27 – Aug. 2 **Mary Poppins** / '64 USA
 Aug. 3 – 16 **The Bodyguard** / '92 USA
 Aug. 17 – 30 **Grease** / '78 USA

T-JOY HIGASHI HIROSHIMA

[Fuji Grand Higashi Hiroshima 3F, 4405 Misonou, Saijo-cho, Higashi Hiroshima-shi / Tel : 082-493-6779 / URL: http://kinezo.jp/pc/t-joy_hiroshima]

From Apr. 13 **Pacific Rim Uprising** / '18 USA
 From Apr. 20 **Ready Player One** / '18 USA
 From Apr. 27 **Avengers: Infinity War** /
 '18 USA
 From May 18 **Rampage** / '18 USA
 From Jun. 1 **Deadpool 2** / '18 USA
 From Jun. 29 **Solo: Star Wars Story** / '18 USA



Please feel free to contact the International Exchange Lounge at 082-247-9715.

E-mail: golounge@pcf.city.hiroshima.jp

May 2018

Bilingual TV Programs



May 2018

#1: NHK Sogo	#4: Hiroshima TV
#2: NHK E Tele	#5: Home TV
#3: RCC	#8: TSS

² Some changes may occur because of special programming.

NEWS

Monday - Sunday

NHK News 7 / 7:00 pm – 7:30 pm (#1)

Monday - Friday

News Watch 9 / 9:00 pm – 10:00 pm (#1)

² Except the 3rd

REGULAR PROGRAMS

Tuesday

Design Talks +plus / 11:00 pm – 11:30 pm (#2)

Friday

Documentary Programs / 10:00 pm – 10:50 pm (#2)

Saturday

Dramatic Earth (Documentary Program) / 7:00 pm – 7:45 pm (#2)

² Rerun: Mon., midnight – 12:45 am

DRAMAS

Monday

Hawaii Five-0 Season 2 ('11 USA) / the 7th: 1:30 am – 2:25 am; the 14th: 1:50 am – 2:45 am; the 28th: 1:25 am – 2:20 am (#4)

² Except the 21st

Friday

The Thundermans Season 3 ('15 USA) / 7:25 pm – 7:50 pm (#2)

Saturday

Game Shakers ('15 USA) / 6:25 pm – 6:50 pm (#2)

Sunday

オクニヨ ('16 South Korea) / 11:00 pm – midnight (#1)

ANIMATIONS

Saturday

Curious George / 8:35 am – 9:00 am (#2)

SpongeBob SquarePants / 6:00 pm – 6:25 pm (#2)

Sunday

Thomas & Friends / 5:30 pm – 5:50 pm (#2)

MOVIES

5th Thomas & Friends: The Great Race / '16 UK / 4:00 pm – 5:00 pm (#2)

11th Pacific Rim / '13 USA / 9:00 pm – 10:54 pm (#4)

13th Dead Man Walking / '95 USA / 2:08 am – 4:00 am (#3)

20th The Last Stand / '13 USA / 2:08 am – 4:00 am (#3)

20th The Fighter / '10 USA / 2:10 am – 4:00 am (#8)

25th The Lost World: Jurassic Park / '97 USA / 9:00 pm – 11:24 pm (#4)

27th The Marine / '06 USA / 1:50 am – 3:30 am (#8)

27th Rosetta / '99 Belgium, France / 2:08 am – 4:00 am (#3)

SPORTS

© MLB (#1)

¡ Cleveland Indians x New York Yankees 6th 2:00 am – 5:00 am

¡ Oakland Athletics x New York Yankees 14th 2:00 am – 4:05 am

© Sumo

¡ 2018 May Grand Sumo Tournament (#1) May 13 - 27

13th 3:05 pm – 6:00 pm

14th – 18th 3:08 pm – 6:00 pm

19th 4:00 pm – 6:00 pm

20th 3:45 pm – 6:00 pm

21st – 25th 3:08 pm – 6:00 pm

26th 3:05 pm – 6:00 pm

27th 4:00 pm – 6:00 pm



Please feel free to contact to the International Exchange Lounge at 082-247-9715.

E-Mail: golounge@pcf.city.hiroshima.jp

May 2018

Concerts & Plays



Ticket Offices

- j EDION Play Guide (SUNMALL, 1F) (Kamiya-cho, Naka-ku; Tel. 247-5111)
- k YAMAHA Music (Kamiya-cho, Naka-ku; Tel. 244-3779 Closed on the 1st & the 3rd Wednesdays)
- l Hiroshima Yume Plaza (Hondori, Naka-ku; Tel. 544-1122 Closed on Wednesdays)
- m Kawai Hiroshima (2-2-6 Kamiya-cho, Naka-ku; Tel. 243-9291 Closed on Mondays)
- n Fukuya Department Store, Hatchobori (7F) (Ebisu-cho, Naka-ku; Tel. 246-6111)
- o Fukuya Department Store, Hiroshima Station (7F) (Matsubara-cho, Minami-ku; Tel. 568-3111)
- p Alpark Tenmaya (3F) (Inokuchi-myojin, Nishi-ku; Tel. 501-1111)
- q Hiroshima Arts Gakki (Hatchoboru, Naka-ku; Tel. 227-6601)

Date / Starting Time (Opening Time) / Venue / Ticket Price / Tickets Go on Sale Date / Ticket Offices / Inquiries

♪ Event schedules are subject to change.
Please contact the event office before you go. ♪

May

④ 4 Great Piano Concertos by Yukio Yokoyama (piano) & Hiroshima Symphony Orchestra

3rd Thursday / 1:00 pm – 4:15 pm (12:30 pm) / Hiroshima Bunka Gakuen HBG Hall / S-¥10,000 A-¥8,000 B-¥6,000 / Now on sale / • , „ … † ‡ ^ , Lawson, Ticket PIA, Chugoku Shimbun / Executive Committee 090-8600-4459

④ Cembalo & Saxophone Concert

3rd Thursday / 2:00 pm (1:30 pm) / Higashi Kumin Bunka Center / Adults-¥2,500 High school students and under-¥1,500 / Now on sale / • , Higashi Kumin Bunka Center / 090-7508-2012 (Oda)

④ Spring Concert 2018

3rd Thursday / 2:30 pm (2:00 pm) / Hatsuokaichi Bunka Hall Sakurapia / ¥1,000 / Please contact the concert organizer for ticket information. / *Rin no Bu* Office 090-9418-4981

④ Mandolin Ensemble Regina: The 8th Concert

4th Friday / 1:30 pm (1:00 pm) / Higashi Kumin Bunka Center / Free admission / 090-3174-4305 (Yasui)

④ Hiroshima String Orchestra: The 30th Concert

4th Friday / 2:00 pm (1:30 pm) / Higashi Kumin Bunka Center / Free admission / Hiroshima String Orchestra 090-8245-3106 (Okamoto)

④ The 35th Anniversary of Tokyo Disney Resort: "Happiest Celebration!" in Concert

4th Friday / 5:00 pm (4:30 pm) / Hiroshima Bunka Gakuen HBG Hall / S-¥8,500 A-¥7,500 / Now on sale / Lawson, Ticket PIA, e+, CN Play Guide, Seven-Eleven, Rakuten Ticket, • / Yumebanchi Hiroshima 082-249-3571 (weekdays, 11 am – 7 pm)

④ Special Concert 2018 in Hiroshima

4th Friday / 6:30 pm (6:00 pm) / Elisabeth University of Music, Cecilia Hall / Adults-¥2,000 Students-¥800 / Please contact the concert organizer for ticket office information. / 082-287-0380 (Takemoto)

④ Ancoro Mochi: The 1st Concert

6th Sunday / 2:00 pm (1:30 pm) / Nishi Kumin Bunka Center / Free admission / 082-548-0722 (Matsushita)

④ Hiroshima Symphony Orchestra: Bouquet of Music HSO Masterpiece Concert ~ Spring ~

(Richard Strauss: *Horn Concerto No. 1 in E-flat major, Op. 11, TrV117*; Smetana: *Ma vlast, ~Vlasta*; Tchaikovsky: *Symphony No. 5 in E minor, Op. 64*)
12th Saturday / 3:00 pm (2:00 pm) / International Conference Center Hiroshima, Phoenix Hall / S-¥4,200 Pair tickets (S seats)-¥6,400 A-¥3,200 B-¥2,200 Students-¥1,500 (Student tickets are only sold at the Hiroshima Symphony Orchestra Office.) / Now on sale / j , n o † ^ , Lawson, Ticket PIA, Chugoku Shimbun & Hiroshima Symphony

Please feel free to contact the International Exchange Lounge at 082-247-9715.

E-mail: golounge@pcf.city.hiroshima.jp

May 2018

Orchestra Office / Hiroshima Symphony Orchestra
Office 082-532-3080 E-mail: info@hirokyo.or.jp
- Conductor: Masaru Kumakura
Horn: Alessio Allegrini

☎ Kalani Pe'a Hawaiian Concert

12th Saturday / 4:30 pm (4:00 pm) / Hatsukaichi
Bunka Hall Sakurapia / High school students and
up-¥5,000 Junior high school students and under-
¥2,500 / Now on sale / • , Ticket PIA, Lawson,
Sakurapia / Hatsukaichi Bunka Hall Sakurapia
0829-20-0111

☎ Charles Richard-Hamelin Piano Recital: All Chopin Program

13th Sunday / 2:00 pm (1:30 pm) / Hatsukaichi
Bunka Hall Sakurapia / ¥4,500 / Now on sale /
• † ‡ , Sakurapia, Lawson, Ticket PIA /
Hatsukaichi Bunka Hall Sakurapia 0829-20-0111 (9
am – 7 pm, closed on Mondays); HOME Event
Center 082-221-7116 (weekdays, 10 am – 5 pm)

☎ Jörgen van Rijen & Kazuyoshi Wakasa Joint Recital

15th Tuesday / 6:30 pm (6:00 pm) / Elisabeth
University of Music, Cecilia Hall / Adults-¥3,000
Students-¥2,000 (all non-reserved seats) / Now on
sale / ^ / E-mail: wakasa@eum.ac.jp (Wakasa)
- Trombone concert
Piano: Atsushi Kakiuchi

☎ Flute Quartet Bacc-Quar Concert Vol. 8

15th Tuesday / 6:45 pm (6:15 pm) / Higashi Kumin
Bunka Center / Advance: Adults & University
students-¥2,000 High school students and under-
¥1,000; At the door: Adults & University students-
¥2,500 High school students and under-¥1,500 /
Please ask the concert organizer for ticket office
information. / 090-9464-3840 (Neishi)

☎ God Save the Queen Japan Tour Hiroshima

18th Friday / 7:00 pm (6:15 pm) / Hiroshima Club
Quattro / ¥6,600 / Now on sale / • † , Ticket PIA,
Lawson, Seven-Eleven, e+ / HOME Event Center
082-221-7116 (weekdays, 10 am – 5 pm)

☎ Hiroshima Happy New Ear 25: Music as Witchcraft

18th Friday / 7:00 pm (6:30 pm) / JMS Aster Plaza /
Advance: Adults-¥2,500 Students-¥1,500; At the
door: Adults-¥3,000 Students-¥2,000 / Now on
sale / • † , Ticket PIA, Lawson, Chugoku Shimbun,
JMS Aster Plaza / Hiroshima Opera and Music
Promotion Committee 082-244-8000

☎ Hiroshima Symphony Orchestra: The 380th Subscription Concert

(Leonard Bernstein's 100th Anniversary
*Bernstein: Candide, Overture; Bernstein: Serenade for
Solo Violin, Strings, Harp and Percussion; Bernstein:
Symphony No. 2 "The Age of Anxiety"*)

25th Friday / 6:45 pm (5:45 pm) / Hiroshima Bunka
Gakuen HBG Hall / S-¥5,200 A-¥4,700 B-
¥4,200 Students-¥1,500 (Student tickets are only
sold at the Hiroshima Symphony Orchestra Office.) /
Now on sale / j , n o † ^ , Lawson, Ticket PIA,
Chugoku Shimbun & Hiroshima Symphony
Orchestra Office / Hiroshima Symphony Orchestra
Office 082-532-3080 E-mail: info@hirokyo.or.jp
- Conductor: Kazuyoshi Akiyama
Violin: Soichi Sakuma / Piano: Sara Davis Buechner

☎ KONISHIKI Hawaiian Concert

26th Saturday / ☎ 2:00 pm (1:30 pm) • 6:00 pm
(5:30 pm) / Hiroshima Kenmin Bunka Center /
¥3,800 (all non-reserved seats) / Now on sale /
• † , Ticket PIA / Green Concert Hiroshima 082-
241-8868

☎ Live Green 2018

27th Sunday / 1:00 pm – 5:00 pm (noon) / Honganji
Temple Hiroshima Betsuin / Advance-¥3,000 At
the door-¥3,500 (all non-reserved seats) ² Free
admission for one child (elementary school student
and under) with his/her guardian (¥500 for each
extra child) / Now on sale / Ticket PIA, Seven-
Eleven, Lawson, • † / RCC 082-222-1133
(weekdays, 10 am – 5 pm)

- Live Act: Kazumi Nikaido and others
This is a music event held at a temple. A talk show,
workshops, cafés & a marché (food market) will also be
held. This is a rain-or-shine event.

☎ Hiroshima String Players: The 15th Concert

27th Sunday / 2:00 pm (1:30 pm) / Nishi Kumin
Bunka Center / Free admission / 090-6410-6019
(Komoto)

☎ Dansu 2018

31st Thursday / 7:00 pm (6:30 pm) / JMS Aster
Plaza / ¥6,000 / Now on sale / Lawson, Ticket
PIA, e+, Seven-Eleven, • , JMS Aster Plaza / TSS
Office 082-253-1010 (weekdays, 10 am – 6 pm)
- Contemporary dance performance



Please feel free to contact the International Exchange Lounge at 082-247-9715.

E-mail: golounge@pcf.city.hiroshima.jp

May 2018

June

NEW!!

€ **Hirokuni Korekata Solo Guitar & Session 2018**

1st Friday / 7:00 pm (6:30 pm) / Live Juke / Adults: Advance-¥3,500 At the door-¥4,000; Students-¥2,000 / Ticket Reservations & Inquiries: Live Juke E-mail: mail@live-19-juke.com; 090-8717-7639 (Uchida)

NEW!!

€ **Young Musicians Concert by Aki Classical Music Concert x Ensemble Jaguar**

8th Friday / 6:30 pm (6:00 pm) / Aki Kumin Bunka Center / Adults: advance-¥2,000 At the door-¥2,500; Students-¥1,000 / Now on sale / JMS Aster Plaza, Kumin Bunka Centers / Aki Kumin Bunka Center 082-824-1330

€ **Hiroshima Symphony Orchestra: The 381st Subscription Concert**

(Zandonai: *Il flauto notturno, for Flute and Orchestra*; Mozart: *Flute Concerto No. 1 in G major, K. 313 (285c)*; Tchaikovsky: *Symphony No. 4 in F major, op. 36*)

8th Friday / 6:45 pm (5:45 pm) / Hiroshima Bunka Gakuen HBG Hall / S-¥5,200 A-¥4,700 B-¥4,200 Students-¥1,500 (Student tickets are only sold at the Hiroshima Symphony Orchestra Office.) / Now on sale / j , n o ± ^ , Lawson, Ticket PIA, Chugoku Shimbun & Hiroshima Symphony Orchestra Office / Hiroshima Symphony Orchestra Office 082-532-3080 E-mail: info@hirokyo.or.jp
 - Conductor: Kah Chun Wong
 Flute: Karl-Heinz Schütz

€ **Legend: La Speranza**

9th Saturday / 2:00 pm (1:30 pm) / Hiroshima Kenmin Bunka Center / ¥6,000 / Now on sale / Ticket PIA, Lawson, e+, • / UNION Music Office 082-247-6111
 - LEGEND is an operatic vocal group consisting of five men.

NEW!!

€ **Shinichi Fukuda Classical Guitar Concert**

10th Sunday / 5:00 pm (4:30 pm) / Elisabeth University of Music, Xavier Hall / Advance: Adults-¥4,000 University students and under-¥2,000; At the door: Adults-¥4,500 University students and under-¥2,500 / Now on sale / • / Executive Committee E-mail: gaichiguitar@me.com; 080-1647-6782
 - Supporting guest: Toshimitsu Kamigaichi



€ **Toshio Maki Tenor Recital IV**

NEW!!

17th Sunday / 3:00 pm / Hiroshima Nagarekawa Church / ¥2,000 / Please contact the concert organizer for ticket information. / 082-284-5523 (Maki)

NEW!!

€ **Kagura Performance at JMS Aster Plaza**

24th Sunday / 1:00 pm – 5:00 pm (noon) / JMS Aster Plaza / Stalls-¥3,000 Balcony seats-¥2,000 / Now on sale / JMS Aster Plaza, • f / Executive Committee 0826-72-5307; JMS Aster Plaza 082-244-8000

NEW!!

€ **Elisabeth University of Music Concert Series Toshiya Suzuki Recorder Concert**

28th Thursday / 6:45 pm (6:15 pm) / Elisabeth University of Music, Xavier Hall / Adults & University students-¥1,000 High school students & under-¥500 / Now on sale / Elisabeth University of Music, Ticket PIA / Elisabeth University of Music 082-225-8004 or 082-221-0918 E-mail: enso01@eum.ac.jp

€ **Hiroshima Symphony Orchestra, Discovery Series: Schubert Symphonien Zyklus vol. 2**

(Suppé: *Dichter und Bauer, Ouverture*; Schönberg: *Theme and Variations, op. 43b*; Schubert (arr. Webern): *Deutsche Tänze, D820*; Schubert: *Symphonie Nr. B-dur, D485*)

29th Friday / 6:45 pm (5:45 pm) / JMS Aster Plaza / S-¥5,200 A-¥4,200 B- ¥3,200 Students-¥1,000 (Student tickets are only sold at the Hiroshima Symphony Orchestra Office.) / Now on sale / j , n o ± ^ , Lawson, Ticket PIA, Chugoku Shimbun, JMS Aster Plaza & Hiroshima Symphony Orchestra Office / Hiroshima Symphony Orchestra Office 082-532-3080 E-mail: info@hirokyo.or.jp
 - Conductor: Tatsuya Shimono

NEW!!

€ **Grace Quartet: The 2nd Concert**

30th Saturday / 7:00 pm (6:30 pm) / JMS Aster Plaza / Advance: Adults-¥2,500 Students-¥1,500; At the door: Adults-¥3,000 Students-¥2,000 (all non-reserved seats) / Now on sale / JMS Aster Plaza, • / Grace Quartet E-mail: catalto1125@gmail.com 080-1634-0007 (Takawa)

July

€ **MACHINE HEAD:**

Catharsis Japan Tour 2018

5th Thursday / 7:00 pm (6:00 pm) / Hiroshima Club Quattro / ¥8,000 / Now on sale / Hiroshima Club Quattro, e+, Ticket PIA, Lawson, • , Tower Records Hiroshima / Hiroshima Club Quattro 082-542-2280

Please feel free to contact the International Exchange Lounge at 082-247-9715.

E-mail: golounge@pcf.city.hiroshima.jp

May 2018

☺ **Prague Radio Symphony Orchestra & Dai Miyata (cello)**

6th Friday / 6:45 pm (6:15 pm) / Ueno Gakuen Hall / SS-¥12,000 S-¥10,000 A-¥8,000 B-¥6,000 / Now on sale / • † / Green Concert Hiroshima 082-241-8868

☺ **Hiroshima Symphony Orchestra: The 382nd Subscription Concert**

(*Toshio Hosokawa: Meditation - to the victims of Tsunami 3.11 -; Messiaen: le Tombeau resplendissant; Stravinsky: L'Oiseau de feu (1910 Edition)*)
7th Saturday / 3:00 pm (2:00 pm) / Hiroshima Bunka Gakuen HBG Hall / S-¥5,200 A-¥4,700 B-¥4,200 Students-¥1,500 (Student tickets are only sold at the Hiroshima Symphony Orchestra Office.) / From Monday, May 7 / j , n o † ^ , Lawson, Ticket PIA, Chugoku Shimbun & Hiroshima Symphony Orchestra Office / Hiroshima Symphony Orchestra Office 082-532-3080 E-mail: info@hirokyo.or.jp
- Conductor: Jun Märkl

☺ **Hiromitsu Agatsuma: "Standard Songs" feat. Chikuzen Sato 2018**

8th Sunday / 4:00 pm (3:30 pm) / Blue Live Hiroshima / ¥6,800 / Now on sale / Lawson, Ticket PIA, e+, • † / Candy Promotion 082-249-8334
- This is a *shamisen* (traditional Japanese guitar) and piano concert.

☺ **Opera: La Bohème**

17th Saturday / 6:30 pm (6:00 pm) / Gewand Halle / ¥4,000 (all non-reserved seats) / Now on sale / • ... † / Executive Committee 082-255-4349
- This will be played in Italian with Japanese subtitles.

☺ **Kyoko Sako Mandolin Recital**

14th Saturday / 6:30 pm (6:00 pm) / Elisabeth University of Music, Xavier Hall / Advance: Adults-¥2,500 Students-¥1,000; At the door: Adults-¥3,000 Students-¥1,500 (all non-reserved seats) / Now on sale / • /
- Mandolin: Kyoko Sako / Electronics: Shintaro Imai

☺ **Kiev Ballet:**

A Best Selection of Classical Ballet

24th Tuesday / 2:00 pm (1:30 pm) / Hatsukaichi Bunka Hall Sakurapia / ¥6,500 / Now on sale / Ticket PIA, Lawson, • , Sakurapia / Hatsukaichi Bunka Hall Sakurapia 0829-20-0111

☺ **Hiroshima Symphony Orchestra, Discovery Series: Schubert Symphonien Zyklus vol. 2**

(*Suppé: Boccaccio, Overture; Berg: Sieben frühe Lieder; Schubert: Symphony Nr. 6 C-dur, D589*)
27th Friday / 6:45 pm (5:45 pm) / JMS Aster Plaza / S-¥5,200 A-¥4,200 B- ¥3,200 Students-¥1,000 (Student tickets are only sold at the Hiroshima Symphony Orchestra Office.) / From Sunday, May 27 (from Monday, May 28 at the Hiroshima Symphony Orchestra Office) / j , n o † ^ , Lawson, Ticket PIA, Chugoku Shimbun, JMS Aster Plaza & Hiroshima Symphony Orchestra Office / Hiroshima Symphony Orchestra Office 082-532-3080 E-mail: info@hirokyo.or.jp
- Conductor: Tatsuya Shimono
Soprano: Miwako Handa

☺ **Osaka Shion Wind Orchestra: Dragon Quest Concert in Hiroshima**

28th Saturday / 5:00 pm (4:00 pm) / Hiroshima Bunka Gakuen HBG Hall / S-¥5,000 A-¥4,000 / Now on sale / • † , Ticket PIA, Lawson, Seven-Eleven, e+ / HOME Event Center 082-221-7116 (weekdays, 10 am – 5 pm)
- "Dragon Quest" is a famous PRG series in Japan. Its music is also famous.

☺ **Hatsukaichi Peace Concert 2018**

29th Sunday / 1:30 pm (1:00 pm) / Hatsukaichi Bunka Hall Sakurapia / Advance: 19 years old and above-¥1,000 18 years old and under-¥500; At the door: 19 years old and above-¥1,200 18 years old and under-¥700 / From Sunday, May 6 / Sakurapia / Hatsukaichi Bunka Hall Sakurapia 0829-20-0111

☺ **Eusebius Quartett: The 1st Conert**

29th Sunday / 4:00 pm (3:30 pm) / JMS Aster Plaza / Adults-¥3,000 Students-¥1,000 (all non-reserved seats) / Now on sale / JMS Aster Plaza, • / Eusebius Quartett E-mail: eusebiusQ@gmail.com 090-9818-3849 (Kumazawa)

☺ **Pacific Music Festival (PMF) 2018**

31st Tuesday / 6:30 pm (6:00 pm) / International Conference Center Hiroshima, Phoenix Hall / S-¥5,000 A-¥4,000 B-¥3,000 / Now on sale / Lawson, Ticket PIA, e+, • / Candy Promotion Hiroshima 082-249-8334
- Conductor: Valery Gergiev



Please feel free to contact the International Exchange Lounge at 082-247-9715.

E-mail: golounge@pcf.city.hiroshima.jp

May 2018

August

NEW!

☞ **Elisabeth University of Music Concert Series
Summer Vocal Concert**

1st Wednesday / 6:45 pm (6:15 pm) / Elisabeth University of Music, Cecilia Hall / Advance-¥2,000
At the door-¥2,500 / Now on sale / Elisabeth University of Music, Ticket PIA / Elisabeth University of Music 082-225-8004 or 082-221-0918 E-mail: enso01@eum.ac.jp

NEW!

☞ **Sandii & Dennis Bovell**

3rd Friday / 8:00 pm (7:00 pm) / Hiroshima Club Quattro / Advance-¥4,800 At the door-¥5,300 / Now on sale / Club Quattro, e+, Ticket PIA, Lawson, •, Tower Records Hiroshima / Hiroshima Club Quattro 082-542-2280

☞ **Hiroshima Symphony Orchestra:
An Evening of Peace Concert**

(*Brahms: Symphony No. 3 in F major, op. 90; Brahms: Concerto No. 2 in B-flat major, op. 83*)
5th Sunday / 3:00 pm (2:00 pm) / Hiroshima Bunka Gakuen HBG Hall / S-¥5,000 A-¥4,000 Students-¥2,000 (Student tickets are only sold at the Hiroshima Symphony Orchestra Office.) / From Tuesday, June 5 / j, n o † ^, Lawson, Ticket PIA, Chugoku Shimbun & Hiroshima Symphony Orchestra Office / Hiroshima Symphony Orchestra Office 082-532-3080 E-mail: info@hirokyo.or.jp
- Conductor: Kazuyoshi Akiyama / Piano: Nelson Freire

☞ **KAGURA for Peace 2018 in Hiroshima:
Hiroshima – Kagura and <OROCHI for
Kagura and Orchestra> Repose of Souls
and Resurgence**

☞ 18th Saturday • 19th Sunday / ☞ 6:00 pm (5:30 pm) • 1:30 pm (1:00 pm) / JMS Aster Plaza / Now on sale / • f ... † ‡, JMS Aster Plaza, Hatsukaichi Bunka Hall Sakurapia / Hiroshima Bijutsu Kenkyusho 082-506-3060

TICKET PRICES: ≥ All non-reserved seats

w Ticket for August 18 w

Advance: Adults-¥3,000 Students-¥2,000
Elementary school students-¥1,000
Pair tickets-¥5,000

At the door: Adults-¥3,500 Students-¥2,500
Elementary school students-¥1,500
Pair tickets-¥5,500

w Ticket for August 19 w

Advance: Adults-¥4,000 Students-¥3,000
Elementary school students-¥1,000
Pair tickets-¥7,000

At the door: Adults-¥4,500 Students-¥3,500
Elementary school students-¥1,500
Pair tickets-¥7,500

w 2-day Tickets: ¥6,000

☞ **Ventures Japan Tour 2018**

23rd Thursday / 6:30 pm (6:00 pm) / Hatsukaichi Bunka Hall Sakurapia / ¥6,000 / From Saturday, May 12 / Lawson, Ticket PIA, e+, • †, Sakurapia / Candy Promotion Hiroshima 082-249-8334; Hatsukaichi Bunka Hall Sakurapia 0829-20-0111

☞ **2018 ~ Erth's Dinosaur Zoo ~**

27th Monday / • 1:00 pm (12:30 pm) , 3:30 pm (3:00 pm) / Hiroshima Bunka Gakuen HBG Hall / ¥3,000 / Now on sale / Lawson, Ticket PIA, e+ / Candy Promotion Hiroshima 082-249-8334

September

NEW!

☞ **Masayuki Hirahara Piano Concert**

1st Saturday / 2:30 pm (2:00 pm) / Blue Live Hiroshima / ¥5,500 (all non-reserved seats) / Now on sale / Blue Live Ticket Center, Ticket PIA / Blue Live Hiroshima 082-250-5522
- Guest: Keita Orimoto (*shakuhachi* & *so**)
**Shakuhachi*: traditional Japanese bamboo flute
So: traditional Japanese harp

☞ **Tsukemen Live 2018 "X"**

1st Saturday / 3:00 pm (2:30 pm) / JMS Aster Plaza / ¥5,000 / Now on sale / Lawson, Ticket PIA, e+ / UNION Music Office 082-247-6111

☞ **Hiroshima Symphony Orchestra:
The 383rd Subscription Concert**

(*Mozart: Don Giovanni, K. 527 Overture; Mozart: Piano Concerto No. 9 in E-flat major, K. 271 "Jeunehomme"; Beethoven: Symphony No. 4 in B-flat major, op. 60*)
7th Friday / 6:45 pm (5:45 pm) / Hiroshima Bunka Gakuen HBG Hall / S-¥5,200 A-¥4,700 B-¥4,200 Students-¥1,500 (Student tickets are only sold at the Hiroshima Symphony Orchestra Office.) / From Saturday, July 7 (from Monday, July 9 at the Hiroshima Symphony Orchestra Office) / j, n o † ^, Lawson, Ticket PIA, Chugoku Shimbun & Hiroshima Symphony Orchestra Office / Hiroshima Symphony Orchestra Office 082-532-3080 E-mail: info@hirokyo.or.jp
- Conductor: Gaetano d'Espinosa
Piano: Kim Hyun Jung

Please feel free to contact the International Exchange Lounge at 082-247-9715.

E-mail: golounge@pcf.city.hiroshima.jp

May 2018

☺ Mami Hagiwara Piano Recital

24th Monday / 4:00 pm (3:30 pm) / Elisabeth University of Music, Cecilia Hall / ¥4,000 / From Sunday, May 27 / • † ‡, Lawson, Ticket PIA / HOME Event Center 082-221-7116 (weekdays, 10 am – 5 pm)

NEW!

☺ Estonian National Male Choir

27th Thursday / 6:30 pm (6:00 pm) / JMS Aster Plaza / S-¥5,500 A-¥4,500 B-¥3,500 / From Sunday, May 27 / • † ‡, JMS Aster Plaza, Lawson, Ticket PIA / HOME Event Center 082-221-7116 (weekdays, 10 am – 5 pm)

October

☺ Hiroshima Symphony Orchestra: The 384th Subscription Concert

(Smetana: *Blaník, from Má Vlast*; Bruckner (arr. Skrowaczewski for string orchestra): *String Quintet in F major, WAB 112: III. Adagio*; Dvořák (arr. Tatsuhiko Nakahara): *Songs My Mother Taught Me (orchestra version)*; Husa: *Music for Prague 1968*)

7th Sunday / 3:00 pm (2:00 pm) / Hiroshima Bunka Gakuen HBG Hall / S-¥5,200 A-¥4,700 B-¥4,200 Students-¥1,500 (Student tickets are only sold at the Hiroshima Symphony Orchestra Office.) / From Tuesday, August 7 / j , n o † ^ , Lawson, Ticket PIA, Chugoku Shimbun & Hiroshima Symphony Orchestra Office / Hiroshima Symphony Orchestra Office 082-532-3080 E-mail: info@hirokyo.or.jp
- Conductor: Tatsuya Shimono

NEW!

☺ S**t kingz "The Library"

☺ 27th Saturday • 28th Sunday / ☺ the 27th: • 1:00 pm , 6:00 pm • the 28th: Noon / JMS Aster Plaza / ¥6,500 / From Saturday, July 7 / Lawson, Ticket PIA, e+ / TSS Office 082-253-1010 (weekdays, 10 am – 6 pm); Candy Promotion Hiroshima 082-249-8334 (weekdays, 11 am – 6:30 pm)

NEW!

☺ Hiroshima Symphony Orchestra: Bouquet of Music HSO Masterpiece Concert ~ Autumn ~

(Haydn: *Trumpet Concerto, in E-flat major, Hob. VIIe: 1*; Liszt: *Les Preludes, S97/R414*; Sibelius: *Symphony No. 2 in D major, Op. 43*)

28th Sunday / 3:00 pm (2:00 pm) / International Conference Center Hiroshima, Phoenix Hall / S-¥4,200 Pair tickets (S seats)-¥6,400 A-¥3,200 B-¥2,200 Students-¥1,500 (Student tickets are only sold at the Hiroshima Symphony Orchestra Office.) / From Sunday, May 13 (from Monday, May 14 at the Hiroshima Symphony Orchestra Office) /

NEW!

j , n o † ^ , Lawson, Ticket PIA, Chugoku Shimbun & Hiroshima Symphony Orchestra Office / Hiroshima Symphony Orchestra Office 082-532-3080 E-mail: info@hirokyo.or.jp
- Conductor: Gen Ohta
Trumpet: Uwe Komischke
Navigator: Shogo Kariyazaki

November

NEW!

☺ Iceland Symphony Orchestra with Vladimir Ashkenazy (conductor) x Nobuyuki Tsujii (piano)

9th Friday / 6:45 pm (6:00 pm) / Hiroshima Bunka Gakuen HBG Hall / S-¥17,000 A-¥14,000 B-¥11,000 C-¥9,000 / From Sunday, June 17 / • † ‡, Ticket PIA, Lawson / HOME Event Center 082-221-7116 (weekdays, 10 am – 5 pm)

☺ Hiroshima Symphony Orchestra: The 385th Subscription Concert

(Brahms: *Violin Concerto in D major, op. 77*; Brahms: *Symphony No. 4 in E major, op. 98*)

16th Friday / 6:45 pm (5:45 pm) / Hiroshima Bunka Gakuen HBG Hall / S-¥6,200 A-¥5,700 B-¥5,200 Students-¥1,500 (Student tickets are only sold at the Hiroshima Symphony Orchestra Office.) / From Sunday, September 16 (from Tuesday, September 18 at the Hiroshima Symphony Orchestra Office) / j , n o † ^ , Lawson, Ticket PIA, Chugoku Shimbun & Hiroshima Symphony Orchestra Office / Hiroshima Symphony Orchestra Office 082-532-3080 E-mail: info@hirokyo.or.jp
- Conductor: Christian Arming
Violin: Akiko Suwanai

NEW!



Please feel free to contact the International Exchange Lounge at 082-247-9715.

E-mail: golounge@pcf.city.hiroshima.jp

May 2018



Event Halls

® Hiroshima Bunka Gakuen HBG Hall 広島文化学園 HBG ホール

(3-3 Kako-machi, Naka-ku, Hiroshima Tel. 082-243-8881)

† Take the No.24 bus bound for Yoshijima Eigyocho (吉島営業所) and get off at Kako-machi (加古町).
Walking time to destination: 2 minutes

® Hiroshima Kenmin Bunka Center 広島県民文化センター

(1-5-3 Ote-machi, Naka-ku, Hiroshima Tel. 082-245-2311)

† Take a streetcar or a bus and get off at Hondori (本通) or Kamiya-cho (紙屋町). Walking time to destination is 5 minutes.

® JMS Aster Plaza JMS アステールプラザ

(4-17 Kako-machi, Naka-ku, Hiroshima Tel. 082-244-8000)

† Take the No.24 bus bound for Yoshijima Eigyocho (吉島営業所) and get off at Kako-machi (加古町).
Walking time to destination is 2 minutes.

® Ueno Gakuen Hall 上野学園ホール

(19-1 Hakushima-kita-machi, Naka-ku, Hiroshima Tel. 082-223-6367)

† Take the Astramline bound for Koiki Koen-mae (広域公園前) or Chorakuji (長楽寺) Station and get off at Hakushima (白島) Station. Walking time to destination is 3 minutes.

® Hiroshima Kokusai Kaigijou (International Conference Center Hiroshima), Phoenix Hall 広島国際会議場フェニックスホール

(1-5 Nakajima-cho, Naka-ku, Hiroshima Tel. 082-242-7777)

† Get on a Hiroshima Bus bound for Yoshijima and get off at Heiwa Kinenkoen (平和記念公園).
† From Chuden-mae (中電前) or Genbaku Dome-mae (原爆ドーム前) Streetcar Stop, walking time to destination is 5 minutes.

® Hiroshima Club Quattro 広島クラブクアトロ

(10-1 Hondori, Naka-ku, Hiroshima (Hiroshima PARCO Hon-kan 10F) Tel. 082-542-2280)

† From Hatchobori (八丁堀) Streetcar Stop, walking time to destination is 5 minutes.

® Hiroshima Green Arena 広島グリーンアリーナ

(4-1 Moto-machi, Naka-ku, Hiroshima Tel. 082-228-1111)

† From Kamiya-cho-nishi (紙屋町西) or Kamiya-cho-higashi (紙屋町東) Streetcar Stop, walking time to destination is 5 minutes.

® Hiroshima Sun Plaza 広島サンプラザ

(3-1-1 Shoko Center, Nishi-ku, Hiroshima Tel. 082-278-5000)

† Take a train or streetcar to Miyajima and get off at JR Shin-inokuchi (新井口) Station (JR Sanyo Line) or Shoko Center-iriguchi (商工センター入り口) Streetcar Stops (Hiroden Miyajima Line). Walking time to destination is 5 minutes.

® Elisabeth University of Music エリザベト音楽大学

(4-15 Nobori-machi, Naka-ku, Hiroshima Tel. 082-221-0918)

† From Kanayama-cho (銀山町) or Jogakuin-mae (女学院前) Streetcar Stop, walking time to destination is 10 minutes.

® Higashi Kumin Bunka Center 東区民文化センター

(10-31 Higashi-kaniya-cho, Higashi-ku, Hiroshima Tel. 082-264-5551)

† From the Shinkansen Exit of the JR Hiroshima (広島) Station, walking time to destination is 10 minutes.

Please feel free to contact the International Exchange Lounge at 082-247-9715.

E-mail: golounge@pcf.city.hiroshima.jp

May 2018

® **Nishi Kumin Bunka Center 西区民文化センター**

(6-1 Yokogawa Shin-machi, Nishi-ku, Hiroshima Tel. 082-234-1960)

† From JR Yokogawa (横川) Station, walking time to destination is 5 minutes.

® **Asaminami Kumin Bunka Center 安佐南区民文化センター**

(22-17 Nakasuji 1-chome, Asaminami-ku, Hiroshima Tel. 082-879-3060)

† From *Astramline* Nakasuji (中筋) Station, walking time to destination is 5 minutes.

® **Saeki Kumin Bunka Center 佐伯区民文化センター**

(6-1-10 Itsukaichi-chuo, Saeki-ku, Hiroshima Tel. 082-921-7550)

† From Hiroshima Bus Center (*Sogo* Hiroshima, 3F), take a bus to Yakushigaoka-danchi (薬師が丘団地), Shikigaoka-danchi (四季が丘団地), Higashi-kannon-dai-danchi (東観音台団地) or Ajinadai-kita (阿品台北) and get off at Saeki-kumin Bunka Center-mae (佐伯区民文化センター前). Walking time to destination is 1 minute.

® **Aki Kumin Bunka Center 安芸区民文化センター**

(2-16 Funakoshi-minami 3-chome, Aki-ku, Hiroshima Tel. 082-824-1330)

† From JR Kaitaichi (海田市) Station (JR Sanyo Line), walking time to destination is 5 minutes.

® **Blue Live Hiroshima ブルーライブ広島**

(3-12-69 Ujina Kaigan, Minami-ku, Hiroshima Tel. 082-250-5522)

† Take a streetcar for Hiroshima-ko (No. 1, 3 or 5) and get off at Kaigan-dori (海岸通). Walking time to destination is 5 minutes.

® **Live Juke ライブジューク**

(Crystal Plaza 19F, Naka-machi, Naka-ku, Hiroshima Tel. 082-567-5011)

† From Takanobashi (鷹野橋) or Nisseki Byouin-mae (日赤病院前) Streetcar Stops, walking time to destination is 7 minutes.

® **Kawai Hiroshima Concert Salon "Pace" カワイ広島コンサートサロン "パーチェ"**

(2-2-6 Kamiya-cho, Naka-ku, Hiroshima Tel. 082-243-9291)

† From Hondori (本通) Streetcar Stop, walking time to destination is 2 minutes.

® **Hiroshima Nagarekawa Church 広島流川協会**

(8-30 Kami-nobori-cho, Naka-ku, Hiroshima Tel. 082-221-1813)

† From Jogakuin-mae (女学院前) or Shukkeien-mae (縮景園前) Streetcar Stop, walking time to destination is 5 minutes.

® **Jodoshinshu Honganji-ha Hiroshima Betsuin 浄土真宗本願寺派広島別院**

(1-19 Tera-machi, Naka-ku, Hiroshima Tel. 082-231-0302)

† Get off at Betsuin-mae (別院前) Streetcar Stop.

® **Hatsukaichi Bunka Hall Sakurapia はつかいち文化ホールさくらびあ**

(1-11-1 Shimo-hera, Hatsukaichi City Tel. 0829-20-0111)

† Take a train on the JR Sanyo Line bound for Iwakuni and get off at JR Miyauchi Kushido (宮内串戸) Station. Walking time to destination is 15 minutes.

† Take a streetcar on the Hiroden Miyajima Line and get off at Hatsukaichi Shiyakusho-mae (廿日市市役所前). Walking time to destination is 8 minutes.

® **Kure City Bunka Hall 呉市文化ホール**

(3-10-1 Chuo, Kure City Tel. 0823-25-7878)

† From JR Kure (呉) Station (JR Kure Line), walking time to destination is 7 minutes.



Please feel free to contact the International Exchange Lounge at 082-247-9715.

E-mail: golounge@pcf.city.hiroshima.jp

May 2018



Museums



A: Adults **U: University Students** **H: High School Students**
J: Junior High School Students **E: Elementary School Students**
S: Seniors (65 years old and above - Identification showing your date of birth is required.)

² Generally, admission is allowed up to 30 min. prior to closing. ²

Hiroshima Museum of Art

Address: 3-2 Moto-machi, Naka-ku, Hiroshima City
 Tel: 082-223-2530
 Hours: 9:00 am – 5:00 pm
 Closed: Mondays (except during special exhibitions)
 URL: <http://www.hiroshima-museum.jp>

Special Exhibition

j **Cats in the Art**

Period: Saturday, April 21 – Sunday, June 24
 Admission Fee:

A -¥1,300 (¥1,100), S-¥1,100,
 U&H-¥1,000 (¥800), J&E-¥600 (¥400)

² Advance ticket prices shown in ().

Collection Exhibition

j **Modern European Paintings**

Period: Year-round

Hiroshima City Museum of Contemporary Art

Address: 1-1 Hijiyama Koen, Minami-ku, Hiroshima City
 Tel: 082-264-1121
 Hours: 10:00 am – 5:00 pm
 Closed: Mondays (except national holiday) & May 1
 URL: <http://www.hcmca.cf.city.hiroshima.jp/>

Special Exhibition

j **NOBUYA ABE**

1913-1971: Insatiable Quest beyond Borders

Period: Friday, March 23 – Sunday, May 20
 Admission Fee: A-¥1,030 (¥820), U-¥720

(¥620), S&H-¥510 (¥410), J & under-Free
² Advance ticket prices shown in ().

Collection Exhibition

j **2018 – 1: Collection Highlights & Special Feature: “Women’s March”**

Period:

Saturday, February 24 – Sunday, June 17
 Admission Fee: A-¥360, U-¥270, S&H-¥170,
 J & under- Free

² Holders of special exhibition admission tickets are also entitled to view the collection exhibition.

Open Program (Free admission)

j **Yoko Ono, My Memory is Beautiful**

Period:

Saturday, February 24 – Sunday, June 17

Video Art Program (Free admission)

j **A Window to the World**

Period: Year-round

Hiroshima MOCA Monthly Workshop

\$ This is an art program in which the museum selects one particular material and visitors are free to make anything with it.

Reservations are not required. You can join the workshop on the event day of.

Date: Sunday, May 20 & June 17

Time: j 10:00 am – noon

k 2:00 pm – 4:00 pm

Participation Fee: Free

Hiroshima Prefectural Art Museum

Address: 2-22 Kaminobori-cho, Naka-ku,
 Hiroshima City

Tel: 082-221-6246

Hours: 9:00 am – 5:00 pm

² Open until 8:00 pm on Fridays (Apr. – Oct.)

² Open until 7:00 pm on Fridays (Nov. – Mar.)

Closed: Open every day in May

² The 2nd floor exhibition room will be closed on May 28.

URL: <http://www.hpam.jp/>

Special Exhibitions

j **La Parisienne: Portraying Women in the Capital of Culture, 1715-1965 from the Museum of Fine Arts, Boston**

Period:

Wednesday, April 11 – Sunday, June 10

Admission Fee:

A-¥1,400 (¥1,200), U&H-¥900 (¥700),

J&E-¥600 (¥400)

² Advance ticket prices shown in ().

Please feel free to contact the International Exchange Lounge at 082-247-9715.

E-mail: golounge@pcf.city.hiroshima.jp

May 2018

Collection Exhibition

Admission Fee (all exhibitions):
 A-¥510, U-¥310, H & under-Free
 Holders of special exhibition admission tickets
 are also entitled to view the Museum's Collection
 exhibits.

j The Age of Light and Shadow

~ Art of the 1920s and 1930s ~

Period: Wednesday, April 18 – Sunday, July 1

Kure Municipal Museum of Art

Address: Irifuneyama Koen, Saiwai-cho, Kure City
 Tel: 0823-25-2007

Hours: 10:00 am – 5:00 pm

Closed: Tuesdays (except national holidays)

URL: <http://kure-bi.jp/>

Special Exhibition**j Ukiyo-e: Hiroshige Utagawa**

Period: Saturday, April 7 – Sunday, May 20

Admission Fee:

A-¥1,000 (¥800), U&H-¥600 (¥500),

J&E-¥400 (¥300)

² Advance ticket prices shown in ().

Collection Exhibition**j Nature Paintings**

Period: Friday, June 1 – Monday, July 16

Admission Fee: A&U-¥300, H-¥180,

J&E-¥120

Fukuyama Museum of Art

Address: 2-4-3 Nishi-machi, Fukuyama City
 Tel: 084-932-2345

Hours: 9:30 am – 5:00 pm

Closed: Mondays (except national holidays)

HP: <http://www.city.fukuyama.hiroshima.jp/site/fukuyama-museum/>

Special Exhibition**j Jakuchu & Arts in Kyoto**

~ From the Hosomi Museum Collection ~

Period: Saturday, April 14 – Sunday, June 10

Admission Fee: A&U-¥1,000

H & under-Free

N A ticket to see both the special exhibition and
 the art collection is available for ¥1,100.

Collection Exhibition**j Spring Exhibition: Koichi Katayama**

Period: Wednesday, April 4 – Sunday, June 17

Admission Fee: A&U-¥300, H & under-Free

Onomichi City Museum of Art

Address: 17-19 Nishitsuchido-cho, Onomichi City
 (Inside Senkoji Park)

Tel: 0848-23-2281

Hours: 9:00 am – 5:00 pm

Closed: Mondays except national holidays

URL: <http://www7.city.onomichi.hiroshima.jp/>

Special Exhibition**j Ukiyo-e: Cats**

Period: Saturday, March 17 – Sunday, May 6

Admission Fee: A-¥800, U&H-¥550,

J & under-Free

j The 62nd Onomichi Citizens' Art Exhibition

Period: Saturday, June 2 – Sunday, June 24

Admission Fee: Free

Okuda Genso Sayume Art Museum

Address: 453-6 Higashi Sakeya-machi, Miyoshi City

Tel: 0824-65-0010

Hours: 9:30 am – 5:00 pm

² Open until 9:00 pm on Monday, May 28

Closed: Wednesday, May 9 & June 13

URL: <http://www.genso-sayume.jp>

Special Exhibition**j GKibo Kodama**

Period: Friday, April 27 – Sunday, June 6

Admission Fee:

A-¥1,000 (¥900), Tickets for couple-

¥1,800 U&H-¥500 (¥400), J & under-Free

² Advance ticket prices shown in ().

Fudenosato Kobo

Address: 5-17-1 Nakamizo, Kumano-cho, Aki-gun

Tel: 082-855-3010

Hours: 10:00 am – 5:00 pm

URL: <http://fude.or.jp/jp/>

Special Exhibition**j Takehisa Yumeji: His Poems and Pictures**

Period: Saturday, April 28 – Sunday, June 10

Admission Fee: A&U-¥800, H,J&E-¥250

N Free admission for H,J&E on May 5

j ART TAKESHI

Period: Saturday, July 14 – Sunday,

September 9

Admission Fee: A&U-¥1,000, H,J&E-¥250



Please feel free to contact the International Exchange Lounge at 082-247-9715.

E-mail: golounge@pcf.city.hiroshima.jp

May 2018

Fukuya Department Store (Hatchobori)

Address: 6-26 Ebisu-cho, Naka-ku, Hiroshima City

Tel: 082-246-6111

Hours: 10:00am – 7:30 pm

Open until 8:00 pm on Fridays & Saturdays

URL: <http://www.fukuya-dept.co.jp/>**Special Exhibition****i Ukiyo-e: Hokusai**

Period: Thursday, April 26 – Tuesday, May 8

Admission Fee: A&U-¥700, H & Under-Free

Fukuya Department Store (Hiroshima Eki-mae)

Address: 9-1 Matsubara-cho, Minami-ku, Hiroshima City

Tel: 082-568-3111

Hours: 10:00 am – 8:00 pm

URL: <http://www.fukuya-dept.co.jp/>**Special Exhibition****i Mitsuaki Iwagô Photo Exhibition:****Cats in Kyoto**

Period: Thursday, April 26 – Tuesday, May 8

Admission Fee: A&U-¥600, H & under-Free

○ Mitsuaki Iwagô is a famous Japanese animal photographer.

Mitsukoshi Department Store

Address: 5-1 Ebisu-cho, Naka-ku, Hiroshima City

Tel: 082-242-3111

Hours: 10:30 am – 7:30 pm

URL: <http://www.mitsukoshi.co.jp/>**Special Exhibition****i Trick Arts**

Period: Tuesday, April 24 – Sunday, May 6

Admission Fee: H & above-¥500, Junior high school students – 3 years old-¥300, 2 years old and under-Free

i Photo Exhibition: Cats

Period: Tuesday, April 24 – Sunday, May 6

Admission Fee: Free

**i Snoopy & Science Art Exhibition:
"Snoopy Fantaration"**

Period: Tuesday, July 24 – Sunday, August 5

Admission Fee:

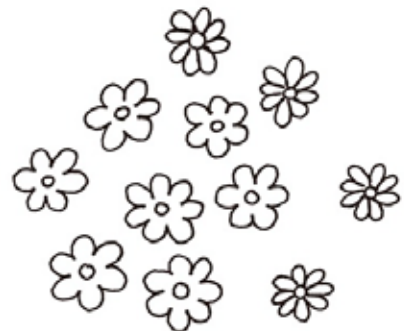
Advance: A&U-¥700, H-¥500,

J-¥400, E-¥300

At the door: A&U-¥1,000, H-¥700,

J-¥500, E-¥300

² Advance tickets will be sold at Ticket PIA, Lawson, e+, Hiroshima Mitsukoshi 6F until July 23.



Please feel free to contact the International Exchange Lounge at 082-247-9715.

E-mail: golounge@pcf.city.hiroshima.jp

May 2018

Hiroshima Toyo Carp Schedule 2018

The Toyo Carp (Hiroshima's professional baseball team) plays about 60 games at the MAZDA Zoom-Zoom Stadium Hiroshima every year.

GAME SCHEDULE Date / Starting Time / Game

MAY

Tuesday, 1st, 6:00 pm / vs. Yomiuri Giants
 Wednesday, 2nd, 6:00 pm / vs. Yomiuri Giants
 Thursday, 3rd, 1:30 pm / vs. Yomiuri Giants
 Tuesday, 8th, 6:00 pm / vs. Yokohama DeNA Baystars
 Wednesday, 9th, 6:00 pm / vs. Yokohama DeNA Baystars
 Friday, 11th, 6:00 pm / vs. Hanshin Tigers
 Saturday, 12th, 2:00 pm / vs. Hanshin Tigers
 Sunday, 13th, 1:30 pm / vs. Hanshin Tigers
 Friday, 18th, 6:00 pm / vs. Tokyo Yakult Swallows
 Saturday, 19th, 2:00 pm / vs. Tokyo Yakult Swallows
 Sunday, 20th, 1:30 pm / vs. Tokyo Yakult Swallows
 Friday, 25th, 6:00 pm / vs. Chunichi Dragons
 Saturday, 26th, 2:00 pm / vs. Chunichi Dragons
 Sunday, 27th, 1:30 pm / vs. Chunichi Dragons
 Wednesday, 30th, 6:00 pm / vs. Saitama Seibu Lions
 Thursday, 31st, 6:00 pm / vs. Saitama Seibu Lions

JULY

Tuesday, 3rd, 6:00 pm / vs. Tokyo Yakult Swallows
 Wednesday, 4th, 6:00 pm / vs. Tokyo Yakult Swallows
 Thursday, 5th, 6:00 pm / vs. Tokyo Yakult Swallows
 Monday, 9th, 6:00 pm / vs. Hanshin Tigers
 Tuesday, 10th, 6:00 pm / vs. Hanshin Tigers
 Wednesday, 11th, 6:00 pm / vs. Hanshin Tigers
 Friday, 20th, 6:00 pm / vs. Yomiuri Giants
 Saturday, 21st, 6:00 pm / vs. Yomiuri Giants
 Sunday, 22nd, 6:00 pm / vs. Yomiuri Giants
 Friday, 27th, 6:00 pm / vs. Yokohama DeNA Baystars
 Saturday, 28th, 6:00 pm / vs. Yokohama DeNA Baystars
 Sunday, 29th, 6:00 pm / vs. Yokohama DeNA Baystars

TICKET OFFICES

w MAZDA Zoom-Zoom Stadium Hiroshima

Tickets can be purchased at the ticket booths at the entrances of the stadium (closed on August 6).

Booth Opening Times

11:30 am (days with night games) / 11:00 am (days with day games)

11:00 am – 4:00 pm (days when there are no games)

w CARPIO (6-7 Hacho-bori, Naka-ku)

OPEN: 10:00 am – 4:00 pm

CLOSED: No fixed times

TEL: 227-2222

ACCESS

MAZDA Zoom-Zoom Stadium Hiroshima:

From JR Hiroshima Station, walking time to the stadium is 10 minutes.

: Interleague Play

JUNE

Tuesday, 5th, 6:00 pm / vs. Hokkaido Nippon-Ham Fighters
 Wednesday, 6th, 6:00 pm / vs. Hokkaido Nippon-Ham Fighters
 Thursday, 7th, 6:00 pm / vs. Hokkaido Nippon-Ham Fighters
 Friday, 8th, 6:00 pm / vs. Tohoku Rakuten Golden Eagles
 Saturday, 9th, 2:00 pm / vs. Tohoku Rakuten Golden Eagles
 Sunday, 10th, 1:30 pm / vs. Tohoku Rakuten Golden Eagles
 Tuesday, 26th, 6:00 pm / vs. Yomiuri Giants
 Wednesday, 27th, 6:00 pm / vs. Yomiuri Giants
 Thursday, 28th, 6:00 pm / vs. Yomiuri Giants

AUGUST

Tuesday, 7th, 6:00 pm / vs. Chunichi Dragons
 Wednesday, 8th, 6:00 pm / vs. Chunichi Dragons
 Thursday, 9th, 6:00 pm / vs. Chunichi Dragons
 Friday, 10th, 6:00 pm / vs. Yomiuri Giants
 Saturday, 11th, 6:00 pm / vs. Yomiuri Giants
 Sunday, 12th, 6:00 pm / vs. Yomiuri Giants
 Tuesday, 21st, 6:00 pm / vs. Tokyo Yakult Swallows
 Wednesday, 22nd, 6:00 pm / vs. Tokyo Yakult Swallows
 Thursday, 23rd, 6:00 pm / vs. Tokyo Yakult Swallows
 Friday, 24th, 6:00 pm / vs. Chunichi Dragons
 Saturday, 25th, 6:00 pm / vs. Chunichi Dragons
 Sunday, 26th, 6:00 pm / vs. Chunichi Dragons

w Convenience Stores

Tickets are available at convenience stores such as Lawson, Seven-Eleven, FamilyMart and Sunkus.

INQUIRIES

Hiroshima Toyo CARP

Tel. (082) 223-2141 Fax. (082) 502-1189

URL: www.carp.co.jp/



Please feel free to contact the International Exchange Lounge at 082-247-9715.

E-mail: golounge@pcf.city.hiroshima.jp

May 2018

Sanfrecce Hiroshima FC Schedule 2018

GAME SCHEDULE Date / Kick Off / Game / Venue / Ticket Sales

2018 J League

- Wednesday, May 2 / 7:30 pm / vs. Shimizu S-Pulse / EDION Stadium Hiroshima / Now on sale
- Sunday, May 6 / 5:00 pm / vs. Vissel Kobe / EDION Stadium Hiroshima / Now on sale
- Sunday, May 20 / 4:00 pm / vs. Cerezo Osaka / EDION Stadium Hiroshima / Now on sale
- Wednesday, July 18 / 7:00 pm / vs. Gamba Osaka / EDION Stadium Hiroshima / From Saturday, June 2
- Saturday, July 28 / 7:00 pm / vs. Urawa Red Diamonds / EDION Stadium Hiroshima / From Saturday, June 2
- Sunday, August 5 / 7:00 pm / vs. Shonan Bellmare / EDION Stadium Hiroshima / From Saturday, July 7
- Saturday, August 11 / 7:00 pm / vs. V-Varen Nagasaki / EDION Stadium Hiroshima / From Saturday, July 7
- Sunday, August 19 / 7:00 pm / vs. Kawasaki Frontale / EDION Stadium Hiroshima / From Saturday, July 7
- Saturday, September 1 or Sun., September 2 / Not finalized / vs. Kashima Antlers / EDION Stadium Hiroshima / From Saturday, August 4
- Saturday, September 22 or Sun., September 23 / Not finalized / vs. F. C. Tokyo / EDION Stadium Hiroshima / From Saturday, August 4
- Saturday, October 6 or Sun., October 7 / Not finalized / vs. Kashiwa Reysol / EDION Stadium Hiroshima / From Saturday, September 1
- Saturday, November 10 / Not finalized / vs. Vegalta Sendai / EDION Stadium Hiroshima / From Saturday, October 6
- Saturday, November 24 / Not finalized / vs. Nagoya Grampus / EDION Stadium Hiroshima / From Saturday, October 6

2018 J League YBC Levain Cup Group Stage

Wednesday, May 9 / 7:00 pm / vs. Gamba Osaka / EDION Stadium Hiroshima / Now on sale

TICKETS Seats / Advance Tickets / At the Door

- w Reserved Seats SS / ¥5,300 / ¥5,900 w Reserved Seats SA / ¥3,700 / ¥4,300
- w Unreserved Seats for Adults / ¥2,600 / ¥3,200
- w Unreserved Seats for Students (High School Students and under) / ¥1,000 / ¥1,500



ACCESS

w EDION Stadium Hiroshima (Hiroshima Big Arch)

Take the *Astramline* bound for *Koiki-koen-mae* (広域公園前) and get off at the last station, *Koiki-koen-mae* (広域公園前).

From *Hondori* Station: One way fare - ¥480 Travel time - 35 min.

TICKET OFFICES

- w Sanfrecce Hiroshima Official Shop V-POINT (Shareo, underground shopping mall) / Tel. 248-3317 / Mon. – Sat.: 11 am – 9 pm; Sun. & national holidays: 10 am – 8 pm / Open every day
- w EDION Play Guide (SUNMALL, 1F) w Fukuya (Hiroshima Station) (7F) w Alpark Tenmaya (3F)
- w Convenience Stores (FamilyMart, Seven-Eleven, CircleKSunkus and Lawson)

INQUIRIES: Sanfrecce HIROSHIMA Tel. 233-3233 URL: www.sanfrecce.co.jp

Please feel free to contact the International Exchange Lounge at 082-247-9715.

E-mail: golounge@pcf.city.hiroshima.jp

May 2018

Hiroshima Dragonflies

2017 – 2018 B2 League

μ Hiroshima Dragonflies is a professional basketball team in Hiroshima.

GAME SCHEDULE Date / Starting Time / Game / Venue

² Only the games scheduled to be held in Hiroshima are listed below. For away games, please check the Hiroshima Dragonflies' official website.

μ MAY

Wednesday, May 2 / 7:00 pm / vs. Bambaious Nara / Hiroshima Sun Plaza

TICKETS (At the Door)

w Reserved seats: ¥3,700 - ¥13,400

w Unreserved seats (1st floor seats): Adults-¥3,200 Children-¥2,100

w Unreserved seats (2nd floor seats): Adults-¥2,600 Children-¥1,500

ACCESS

w **Hiroshima Sun Plaza** (1-1 Shoko Center 3-chome, Nishi-ku, Hiroshima City)

From JR Shin Inokuchi (新井口) Station or Shoko Center Iriguchi (商工センター入口) Streetcar Stop, walking time to destination is 5 minutes.

TICKET OFFICES

w Hiroshima Dragonflies Club Shop (Hiroshima Marina Hop / Tel. 082-297-6825 / 10:00 am – 8:00 pm)
(The club shop sells advanced tickets only.)

w Ticket PIA w Convenience Stores (FamilyMart, Seven Eleven, CircleKSunkus and Lawson)

w Hiroshima Power House (Basketball pro Shop) w Taiikusha (Sporting-goods store)

INQUIRIES

w Hiroshima Dragonflies Tel. 082-297-6825 (Mon. – Fri., 10:00 am – 5:30 pm)

HP: <http://hiroshimadragonflies.com>

w NBL (National Basketball League of Japan) Official HP: <http://www.nbl.or.jp>



Please feel free to contact the International Exchange Lounge at 082-247-9715.

E-mail: golounge@pcf.city.hiroshima.jp

May 2018

Seasonal Event Information

May 2018

Ⓢ Event schedules are subject to change. Please contact event organizers before you go.

Events Held in Hiroshima City



Wednesdays between April 4 and December 26, 2018

J May 9, 16, 23 & 30; June 6, 13, 20 & 27

Hiroshima Kagura ひろしまけんみんぶんか センター「ひろしまがくら 広島神楽」ていきこうえん 定期公演

TIME: 7:00 pm – 8:45 pm (The venue will open at 6:00 pm.)

PLACE: Hiroshima Kenmin Bunka Center, Ote-machi, Naka-ku (located near Hondori Shopping Street)

ACCESS: From Kamiya-cho-nishi or Hondori Streetcar Stops, walking time to destination is 3 minutes.

TICKETS: ¥1,000 ² All non-reserved seats

² Tickets will be sold from 5:00 pm on the performance date at the center.
There are no advance tickets.

INQUIRIES: Hiroshima Kenmin Bunka Center 082-245-2311

Friday, April 27 – Sunday, May 6

Meat Festival with World Beer and Gourmet Stadium 2018

にく フェス with せかい 世界のビールとグルメスタジアム 2018

TIME: 10:00 am – 9:00 pm ² Apr. 27 (Fri.), May 1 (Tue.) & 2 (Wed.): 11:00 am – 9:00 pm

PLACE: The Open Space of the Former Municipal Baseball Stadium, Moto-machi, Naka-ku

ACCESS: Get off at Kamiya-cho-nishi or Genbaku Dome-mae Streetcar Stops.

ADMISSION FEE: Free, except for entry to the “kids’ park”. ² Food and drink will incur extra charges.

INQUIRIES: Executive Committee (inside the Hiroshima TV building)
082-249-1218 (Mon. – Fri., 10 am – 6 pm)

Ⓢ You can enjoy various meat dishes, and beer from all over the world.

Ⓢ Remember, no driving if you drink alcohol! Pets (except service dogs) are not allowed to enter the venue. Event may be canceled if the weather is bad.

Thursday, May 3 – Saturday, May 5

The 42nd Hiroshima Flower Festival だい かい 第42回 ひろしまフラワーフェスティバル

TIME: From 11:00 am onward

PLACE: Peace Memorial Park, Heiwa-Odori (Peace Boulevard), etc.

ACCESS: Get off at the Genbaku Dome-mae Streetcar Stop, then walk for about 5 min.

EVENTS: May 3: Opening ceremony, parade, etc.

May 4: Stage performances

May 5: *Kinsai Yosakoi* dancing parade, closing ceremony, etc.

May 3 – 5: Various stage performances, sales kiosks, and other events

INQUIRIES: Hiroshima Flower Festival Executive Committee
082-294-4622 HP: <http://www.hiroshima-ff.com/>

Ⓢ Hiroshima’s Sister/Friendship Cities Event, “Daegu Day (Korea)” will also be held at the Flower Festival venue.

Please feel free to contact the International Exchange Lounge at 082-247-9715.

E-mail: golounge@pcf.city.hiroshima.jp

May 2018

Thursday, May 3 – Saturday, May 5**Hiroshima's Sister/Friendship Cities Event: Daegu Day (Korea)**しまい ゆうこうとし ひ きねん てく の ひ
姉妹・友好都市の日記念イベント 大邱の日

EVENTS: w *Daegu Madan* J Enjoy Korean food!
 DATE & TIME: May 3 – 5 (11:00 am – 6:30 pm)
 VENUE: Near Hotel Sunroute Hiroshima
 w Daegu Day memorial ceremony and stage performance
 DATE & TIME: May 3 (12:30 pm – 1:30 pm)
 VENUE: Stage CARNATION

PLACE: Hiroshima Flower Festival Venue, Naka-ku**ACCESS:** Get off at Genbaku Dome-mae Streetcar Stop.**INQUIRIES:** *Kokusai Kouryu Kyouryoku Ka*, Hiroshima Peace Culture Foundation
082-242-8879 E-mail: internat@pcf.city.hiroshima.jp**μ Special Concert μ**

DATE & TIME: Friday, May 4, from 6:30 pm onward
 VENUE: Elisabeth University of Music, Cecilia Hall, Nobori-machi, Naka-ku
 ACCESS: From Kanayama-cho Streetcar Stop, walking time to destination is 4 minutes.
 TICKETS: Adults-¥2,000 University students and under ¥800 (150 seats) ² all non-reserved seats
 INQUIRIES: *Hiroshima-ken Gassho Renmei* HP: <http://www13.plala.or.jp/hca/>

Thursday, May 3 – Saturday, May 5**Flower Festival Event by Guanajuato Cultural Exchange Delegation****Visiting Hiroshima & Participating in the Flower Festival Event**ぶんか こうりゅうだんらいこう さんか
グアナファト文化 交流 団来 広・フラワーフェスティバル 参加**PLACE:** Flower Festival Venue, Peace Memorial Park, Heiwa-Odori (Peace Boulevard), and surrounding areas**ACCESS:** Get off at the Genbaku Dome-mae Streetcar Stop, then walk for about 5 min.**EVENTS:** May 3: Parade

May 3 – 5: Stage performances, Mexican food stall

² Performers: *Estudiantuna* (musical band) & *El Torito* (traditional dance company)**INQUIRIES:** The Hiroshima Prefectural Office, *Kokusai Ka*, *Kokusai Kouryu Group*082-513-2361 HP: <http://www.pref.hiroshima.lg.jp/soshiki/38/2018gto-bunka.html>

© Hiroshima Prefecture established a Friendship Alliance with Guanajuato State, United Mexican States in 2015.

© Guanajuato Cultural Exchange Delegation will visit Hiroshima from May 1 to 9. Various cultural exchange events will be held not only in Hiroshima City but also Hatsukaichi City and Higashihiroshima City during their visit.

Saturday, May 5**The 25th Traditional Japanese Instruments Concert at Fudojin**だい かい ふどういん ぶんかざいほごほうぐく
第25回 不動院 文化財保護 邦楽 コンサート**TIME:** From 12:30 pm onward**PLACE:** Fudojin Temple, Ushita-shin-machi, Higashi-ku**ACCESS:** Get off at *Astramline* Fudojin Station.**ADMISSION:** Free**INQUIRIES:** *Hiroshima Hougaku Renmei* Office 082-228-8693

Please feel free to contact the International Exchange Lounge at 082-247-9715.

E-mail: golounge@pcf.city.hiroshima.jp

May 2018

Sunday, May 6 & 20**Hiroshima Minato Marché** ひろしまみなとマルシェ**TIME:** 9:00 am – 3:00 pm**PLACE:** Open Space between East and West Terminal of Hiroshima Port, Minami-ku**ACCESS:** Take the No. 1, 3 or 5 streetcar bound for Hiroshima Port and get off at the last stop, Hiroshima Port.**INQUIRIES:** Hiroshima Minato Marché Office 082-255-6646

© You can buy and taste locally-grown fresh vegetables and other food products at the market.

Sunday, May 13**Kenya Day** ケニア DAY**TIME:** 11:30 am – 4:30 pm**PLACE:** CLiP HIROSHIMA 1F, Event Space, Higashi Senda-machi, Naka-ku**ACCESS:** From Takanobashi or Nisseki Byouin-mae Streetcar Stop, walking time to destination is 7 minutes.**ADMISSION:** Free**PROGRAMS:** Workshops, live performances & talk show (2 pm – 4 pm), Kenyan tea and goods sales, etc.**INQUIRIES:** Kenya DAY Executive Committee 080-3547-5967 (Hamanaga)**Saturday, May 19****Brass Band Festival** ^{みずべ}水辺のコンサート ^{すいそうがく}吹奏楽フェスティバル**TIME:** Noon – 4:00 pm**PLACE:** Shinsui Terrace (the opposite side of the A-bomb Dome), Otemachi, Naka-ku**ACCESS:** Get off at Genbaku Dome-mae Streetcar Stop.**INQUIRIES:** Mizu no Miyako Hiroshima Suishin Kyougikai Office 082-504-2676

² Call 082-504-0822 on the event day.

© This will be postponed until the following day if it rains on the 19th.**Sunday, May 20****International Latin Festival 2018 in Hiroshima****インターナショナルラテンフェスタ 2018 in** ^{ひろしま}広島**TIME:** 2:00 pm – 7:00 pm**PLACE:** CLiP HIROSHIMA Event Space, Higashi Senda-machi, Naka-ku**ACCESS:** From Takanobashi or Nisseki Byouin-mae Streetcar Stop, walking time to destination is 7 minutes.**TICKETS:** ¥4,500**INQUIRIES:** CLiP HIROSHIMA 082-567-5011**Friday, May 25 – Sunday, May 27****LOHAS Festival Hiroshima 2018** ^{ひろしま}ロハスフェスタ 広島 2018**TIME:** 10:00 am – 5:00 pm ² Entry allowed up to 4:30 pm.**PLACE:** The Open Space of the Former Municipal Baseball Stadium, Motomachi, Naka-ku**ACCESS:** Get off at Kamiya-cho-nishi or Genbaku Dome-mae Streetcar Stops.**INQUIRIES:** LOHAS Festival Office 03-6427-1085 HP: <http://lohasfesta.jp>

Please feel free to contact the International Exchange Lounge at 082-247-9715.

E-mail: golounge@pcf.city.hiroshima.jp

May 2018

Friday, May 25 – Sunday, May 27**Bantou Mitama Festival at Hiroshima Gokoku Shrine**

ぼんとう 万灯 みたま 祭り

SCHEDULE: - May 26*Miko-odori*, a dance performance by one hundred unmarried women in *miko* (female shrine attendant) dress (takes place from 7:00 pm onward.)- May 27Children's *sumo* competition (takes place from 10:00 am onward.)*Kagura* performance (takes place from 7:00 pm onward.)**PLACE:** Hiroshima Gokoku Shrine, Motomachi, Naka-ku**ACCESS:** From Kamiya-cho-higashi Streetcar Stop, walking time to destination is 10 minutes.**INQUIRIES:** Hiroshima Gokoku Shrine 082-221-5590

© This is a festival to console the spirits of victims of war.

Sunday, May 27**Hiroshima's Sister/Friendship Cities Event: Hannover Day (Germany)**

しまい ゆうこうとし ひ きねん イベント ハノーバーの日

TIME: 1:00 pm – 3:40 pm**PLACE:** *Hiroshima-shi Ryugakusei Kaikan*, 1-1 Nishi-kojin-machi, Minami-ku**ACCESS:** From JR Hiroshima Station (south exit), walking time to destination is 5 minutes.**ADMISSION:** Free**PROGRAMS:** Free tasting of German sweets and sausages, a German music concert, etc.**INQUIRIES:** *Kokusai Kouryu Kyouryoku Ka*, Hiroshima Peace Culture Foundation 082-242-8879**Wednesday, May 30****The 13th Sake Festival 2018**

だい かいにほんしゅさんさん 第13回 日本酒燦々2018

TIME: 5:00 pm – 8:00 pm**PLACE:** Alice Garden, an open space in front of Hiroshima PARCO, Nishi-shintenchi, Naka-ku**ACCESS:** From Hatchobori Streetcar Stop, walking time to destination is 5 minutes.**TICKETS:** w "Free Tickets"*: Advance-¥1,500 At the door-¥2,000**"Free Tickets": You can taste about 100 kinds of *sake* with this ticket (except the premium *sake* tasting corner).w Tickets for five cups of *sake*-¥500 ² Tickets will be available on the event day only.**INQUIRIES:** Yamatoya Shuho 082-241-5660© You can taste various Japanese *sake* at this event.**Friday, June 1 – Sunday, June 3****Toukasan Festival** とうかさん**TIME:** Noon – 11:00 pm on June 1 & 2 / Noon – 10:00 pm on June 3**PLACE:** Enryuji Temple and around *Chuo-dori* Street, Naka-ku**ACCESS:** From Hatchobori Streetcar Stop, walking time to destination is 5 minutes.**INQUIRIES:** Enryuji Temple 082-241-7420© *Toukasan* is one of the biggest summer festivals in Hiroshima. Many people in *yukata* (summer kimono) can be seen during the festival. Various stalls will be set up.**Sunday, June 3****Hiroshima Castle Memorial Day**

ひろしまじょう 広島城 メモリアルデー

TIME: 10:00 am – 4:00 pm**PLACE:** Hiroshima Castle**ACCESS:** • Take a Hiroshima sightseeing loop bus, "*meipuru~pu*" (orange line or lemon line) and get off at Hiroshima-jo Castle.

Please feel free to contact the International Exchange Lounge at 082-247-9715.

E-mail: golounge@pcf.city.hiroshima.jp

May 2018

, From Kamiya-cho-higashi or Kamiya-cho-nishi Streetcar Stop, walking time to destination is 15 minutes.

ADMISSION FEE: Free admission on the day.

INQUIRIES: Hiroshima Castle 082-221-7512

Sunday, June 3

Shoubu (Iris-viewing) Tea Ceremony しょうぶ^{ちゃがい}茶会



TIME: 9:30 am – 3:00 pm

PLACE: Shukkeien Garden

ACCESS: Take a streetcar on the Hiroden Hakushima Line and get off at Shukkeien-mae. Walking time to destination is 5 minutes.

FEE: ¥1,200 for the tea ceremony

² Admission fee for the garden (below) is also required.

(Adults-¥260, University & High school students-¥150
Junior high & Elementary school students- ¥100)

INQUIRIES: Shukkeien Garden 082-221-3620

Sunday, June 10

Rice-Planting Festival & Tea Ceremony たう^ちえまつり^{ちゃがい} (茶会)

TIME: Tea ceremony ^a 10:00 am – 3:00 pm

w Rice-planting demonstration, *hayashi-da* performance & *nanjo* dance performance will also be held.

PLACE: Shukkeien Garden

ACCESS: Take a streetcar on the Hiroden Hakushima Line and get off at Shukkeien-mae. Walking time to destination is 5 minutes.

FEE: ¥700 for tea ceremony

² Admission fee for the garden (below) is also required.

(Adults-¥260, University & High school students-¥150
Junior high & Elementary school students-¥100)

INQUIRIES: Shukkeien Garden 082-221-3620

Thursday, July 19 – Wednesday, August 29

Pixar Adventure “What If” ピクサーアドベンチャー「もしも」から^{はじ}始まる、^{ぼうけん}冒険の

せかい
世界

TIME: 10:00 am – 6:00 pm (entry allowed up to 5:30 pm.)

PLACE: NTT CRED Hall, Motomachi CRED Pacela 11F, Motomachi, Naka-ku

ACCESS: • Get off at the *Astramline* Kencho-mae Station.

, Get off at Kamiya-cho-higashi or Kamiya-cho-nishi Streetcar Stop.

TICKETS: w Advance: Junior high school students and above-¥1,000

4 years old – Elementary school students-¥500

w At the door: Junior high school students and above-¥1,200

4 years old – Elementary school students-¥600

² Admission free for children who are 3 years old and under

² Children under elementary school student age should be accompanied by a guardian.

INQUIRIES: TSS Office 082-253-1010 (weekdays, 10 am – 6 pm)

Friday, August 10 – Thursday, August 16

Tomica Land in Hiroshima トミカ^{はく}博 in Hiroshima

TIME: 10:00 am – 4:00 pm ² Entry allowed up to 3:30 pm.

PLACE: *Hiroshima Kenritsu Hiroshima Sangyo Kaikan* (Hiroshima Prefectural Industrial Exhibition Hall), West Exhibition Hall, Hijiyama, Minami-ku

Please feel free to contact the International Exchange Lounge at 082-247-9715.

E-mail: golounge@pcf.city.hiroshima.jp

May 2018

ACCESS: From Minami Kuyakusho-mae Streetcar Stop, walking time to destination is 1 minute.

TICKETS: w Advance: Junior high school students and above-¥900
 3 years old – Elementary school students-¥700
 w At the door: Junior high school students and above-¥1,000
 3 years old – Elementary school students-¥800
 2 Advance “guardian and child” family tickets (one adult and one child) will be sold for ¥1,500 at Seven-Eleven between May 16 (from 10 am) and June 8 (until 11:59 pm).
 2 Admission free for children who are 2 years old and under
INQUIRIES: RCC Broadcasting 082-222-1133 (weekdays, 10 am – 5 pm)
 © “Tomica” are die-cast toy mini-cars for children produced by a Japanese company, Takara Tomy. Tomica has remained a long-selling product since it appeared for the first time in 1970. Tomica Land is a special play land where you can enjoy the whole world of “Tomica”.

Events Held on Miyajima

Until Friday., November 30

Zero Higashida Sculpture Exhibition ゼロ・ヒガシダ^{てん}展

TIME: 8:00 am – 5:00 pm

PLACE: Inside Daishoin Temple ground, Miyajima

ACCESS: Get off at JR Miyajima-guchi Station (JR Sanyo Line) or the Miyajima Streetcar Stop (Hiroden Streetcar Miyajima Line), then take a ferry to Miyajima.

INQUIRIES: Daishoin Temple 0829-44-0111



Until Sunday, May 20

Jusaburo Tsujimura Doll Exhibition: Taira no Kiyomori

つじむらじゅさぶろうにんぎょうてん たいらのきよもり
辻村寿三郎人形展「平清盛」

TIME: 8:00 am – 5:00 pm

PLACE: Daishoin Temple, Miyajima

ACCESS: Get off at JR Miyajima-guchi Station (JR Sanyo Line) or the Miyajima Streetcar Stop (Hiroden Streetcar Miyajima Line), then take a ferry to Miyajima.

INQUIRIES: NPO Miyajima Network HP: <http://miyajimanetwork.com/>

© Jusaburo Tsujimura is a famous doll maker from Miyoshi City, Hiroshima Prefecture.

Until Sunday, May 6

Daishoin Temple Satsuki (Azalea) Festival だいしょういん まつ 大聖院 さつき 祭り

TIME: 8:00 am – 5:00 pm

PLACE: Daishoin Temple, Miyajima

ACCESS: Get off at JR Miyajima-guchi Station (JR Sanyo Line) or the Miyajima Streetcar Stop (Hiroden Streetcar Miyajima Line), then take a ferry to Miyajima.

INQUIRIES: Daishoin Temple 0829-44-0111

© Exhibition of temple treasures, calligraphy by virtuous monks and flower arrangements.

Thursday, May 3

Annual Celebration at Awashima Shrine あわしまじんじゃれいさい 粟島神社例祭

TIME: From 11:00 am onward

PLACE: Awashima Shrine, Miyajima

ACCESS: Get off at JR Miyajima-guchi Station (JR Sanyo Line) or the Miyajima Streetcar Stop (Hiroden Streetcar Miyajima Line), then take a ferry to Miyajima.

Please feel free to contact the International Exchange Lounge at 082-247-9715.

E-mail: golounge@pcf.city.hiroshima.jp

May 2018

INQUIRIES: Itsukushima Shrine 0829-44-2020

© This is the annual celebration of “*Awashima-san*”, also known as the guardian deity of women.

Friday, May 18

Ritual Ceremony for Empress Suiko & Bugaku

すいこてんのうさいようはいしき
推古天皇祭遙拜式

TIME: From 9:00 am onward

PLACE: Itsukushima Shrine, Miyajima

ACCESS: Get off at JR Miyajima-guchi Station (JR Sanyo Line) or the Miyajima Streetcar Stop (Hiroden Streetcar Miyajima Line), then take a ferry to Miyajima.

ADMISSION FEE: Adults & University students-¥300, High school students-¥200,
Junior high & Elementary school students-¥100

INQUIRIES: Itsukushima Shrine 0829-44-2020

© After the ritual ceremony for Empress Suiko (A.D.554-628), *Bugaku* (traditional Japanese imperial court dance and music) will be performed.

Wednesday, May 23

BOZ24 ~in the rhythm of OKYO (Buddhist chant) ~

BOZ24 ぶつきょう さいてん
仏響の祭典

TIME: From 11:00 am onward

PLACE: Daishoin Temple, Miyajima

ACCESS: Get off at JR Miyajima-guchi Station (JR Sanyo Line) or the Miyajima Streetcar Stop (Hiroden Streetcar Miyajima Line), then take a ferry to Miyajima.

ADMISSION FEE: Free

INQUIRIES: Daishoin Temple 0829-44-0111

Saturday, May 26

Tsutomu Arao Heike Biwa (Japanese lute) Concert

あらあつとむ きよもり ゆめ へいきよくけいき しゅうねんきねんえんそうかい
荒尾努「清盛の夢～平曲継起20周年記念演奏会」

TIME: 7:00 pm – 8:30 pm

PLACE: Itsukushima Shrine, Miyajima

ACCESS: Get off at JR Miyajima-guchi Station (JR Sanyo Line) or the Miyajima Streetcar Stop (Hiroden Streetcar Miyajima Line), then take a ferry to Miyajima.

TICKETS: Advance-¥3,000 At the door-¥3,500

² Please contact the concert organizer for ticket information.

INQUIRIES: Executive Committee 090-8723-2326

Events Held Outside of Hiroshima City

Thursday, May 3 – Sunday, May 27

Tomonoura Tai-ami (Traditional Fish-catching)

とも うらかんこうたいあみ
鞆の浦観光鯛網

TIME: Monday – Saturday: From 1:30 pm onward

Sundays & national holidays: j From 10:30 am onward k From 1:30 pm onward

PLACE: Sensui Island, Tomo-cho, Fukuyama City

ACCESS: Take a bus bound for Tomonoura from JR Fukuyama Station (JR Sanyo Line) and get off at Tomonoura (a 30 min. bus ride). Then get on a ferry to Sensui Island (a 5 min. ferry ride).

TICKET FEE: High school students and up - ¥2,800

Junior high and Elementary school students - ¥1,400

² You can ride a ferry to the island without charge if you show your ticket for the event.

² Tickets will be sold at the ferry landing during the event period.

J Tickets including bus fare* are also available.

High school students and up - ¥3,300

Junior high and Elementary school students - ¥1,650

*Round trip tickets are from JR Fukuyama Station to Tomonoura

Please feel free to contact the International Exchange Lounge at 082-247-9715.

E-mail: golounge@pcf.city.hiroshima.jp

May 2018

INQUIRIES: *Fukuyama Kanko Convention Kyokai* 084-926-2649

© *Tai-ami*, net-fishing of porgy, is a traditional fish-catching method which has a history of 380 years.

Thursday, May 3 & Friday, May 4

Takehara Take (Bamboo) Festival たけはら 竹まつり

TIME: 10:00 am – 4:00 pm

PLACE: *Machi-nami Hozon Chiku* (Historical areas and buildings), Takehara City

ACCESS: From JR Takehara Station (JR Kure Line), walking time to destination is 15 minutes.

INQUIRIES: Takehara City *Kanko Kyokai* (Tourist Association) 0846-22-4331

© *Kaguya-hime* (Moon Princess) parade, bamboo craft classes, tasting *Sasa-zake* (a type of sake), etc.

Thursday, May 3 – Sunday, May 6

Miyoshi Wine Festival はる みよし まつり 春の三次ワイン祭

TIME: 10:30 am – 4:00 pm

PLACE: Hiroshima Miyoshi Winery, Miyoshi City

ACCESS: Take a bus from JR Miyoshi Station (JR Geibi Line) and get off at Hiroshima Miyoshi Winery.

INQUIRIES: Hiroshima Miyoshi Winery 0824-64-0200

© Various events will be held.

Tue., May 8

Hana Matsuri at Tounji Temple とうんじ はなまつり 洞雲寺の花祭り

TIME: Ritual – From 10:00 am onward

PLACE: Tounji Temple, Hatsukaichi City

ACCESS: From JR Hatsukaichi Station (JR Sanyo Line), walking time to destination is 10 minutes.

INQUIRIES: Tounji Temple 0829-31-2461

© This is a ceremony to celebrate Buddha's birthday.

© Tounji Marché will also be held from 10:00 am to 4:00 pm on the day.

Sat., May 12

The 27th Onomichi Noh Performance だい かいおのみちたきぎのう 第27回尾道新能

TIME: 6:00 pm – 8:00 pm ² The venue will open at 5:00 pm

PLACE: Jodo-ji Temple, Amida-do, Onomichi City

ACCESS: Take a bus from JR Onomichi Station (JR Sanyo Line) and get off Jodo-ji-shita (a 10 min. bus ride).

TICKETS: Advance: Adults - ¥3,000 University students - ¥1,000

At the door: Adults - ¥3,500 University students - ¥1,000

² Free admission for high school students and under

² Advance tickets are sold at *Fukuya* Department Stores (Hatchobori & Hiroshima Station) and EDION Hiroshima Play Guide (SUNMALL, 1F) in Hiroshima City.

INQUIRIES: *Onomichi Kanko Kyokai* (Tourist Association) 0848-36-5495

Executive Committee 080-6344-3360 (Kajikawa)

© *Noh* is a traditional Japanese performing art.

Sunday, May 13

Buddhist Rites for Mother's Day and Tea Ceremony

よ ははけいさんほうようなら く ちゃしき
世の母敬讃法要並びに供茶式

TIME: Buddhist Rites: 11:00 am – noon / Tea Ceremony: Noon – 3:00 pm

PLACE: Kosanji Temple & Kosanji Temple Museum, Onomichi City

ACCESS: • Take an express bus "*Shimanami Liner*" from Hiroshima Bus Center (Sogo Hiroshima Department Store, 3F) and get off at Setoda Bus Stop (a 1 hour and 40 min. bus ride). Then



Please feel free to contact the International Exchange Lounge at 082-247-9715.

E-mail: golounge@pcf.city.hiroshima.jp

May 2018

take another bus from there and get off at Kosanji.

Please note that reservations are required to take a “*Shimanami Liner*”. Call the Hiroko Reservation Center (082-238-3344) for more information (9 am – 6 pm; open every day).

- k Get on a ferry from Mihara Port or Onomichi Port and get off at Setoda Port. Walking time to destination is 10 minutes.

FEE FOR THE CEREMONY: Free ² Admission fee for the temple and museum is required (see below).

ADMISSION FEE FOR THE TEMPLE & THE MUSEUM:

Adults-¥1,400 University students-¥1,000 High school students-¥800

Junior high school students and under-Free Seniors (65 years old and above)-¥1,200

INQUIRIES: Kosanji Temple & Kosanji Temple Museum 0845-27-0800

© Carnations will be given away for free from 9:00 am on the event day.

Sunday, May 13

O-hanataue (Rice-Planting Festival)

おおはなたうえ
大花田植

TIME: From 10:30 am onward

PLACE: Oasa Narutaki Roten Onsen, Kitahiroshima-cho

ACCESS: j Take an express bus from JR Hiroshima Station (*Shinkansen* Exit) and get off at Oasa I.C. From Oasa I.C., time to destination by taxi is 7 minutes.

- k From Oasa I.C. on the Hamada Expressway, driving time to destination is 7 minutes.

INQUIRIES: Oasa Narutaki Roten Onsen 0826-82-3773

© This rice-planting performance, “*Shinjo no hayashida*”, is designated as an Important Intangible Folk Cultural Property of Japan. Beautifully decorated oxen will cultivate the rice fields and woman dressed in traditional costumes called *Saotome* will plant rice. The *Nanjo-odori* dance, which is designated as a Hiroshima Prefecture intangible cultural asset, will also be performed.

Saturday, May 19 & Sunday, May 20

The 51st Fukuyama Rose Festival 2018

だい かいふくやま まつり
第51回福山ばら祭2018

PLACE: Bara Koen (“Rose Park”), Midori-machi Koen (park), Chuo Koen (park) and Fukuyama City central area

ACCESS: From JR Fukuyama Station (JR Sanyo Line), walking time to destination is 20 minutes.

INQUIRIES: Fukuyama Matsuri linkai 084-944-5515

© *Fukuyama Daidougei* (Street Performance) Festival 2018 will also be held on May 19 & 20 at Fukuyama City central area (INQUIRIES: *Fukuyama Daidougei* Office 080-6323-1755).

Sunday, May 20

Hatsuka-no-ichi Market

はつか いち
廿日の市

TIME: 8:00 am – 11:30 am

PLACE: The open Space in front of Hatsukaichi City Hall, Hatsukaichi City

ACCESS: From Hatsukaichi Shiyakusho-mae (Hiroden Streetcar Miyajima Line), walking time to destination is 5 minutes.

INQUIRIES: *Hatsukaichi Kanko Kyokai* (Tourist Association) 0829-31-5656

Saturday, May 26

Satsuki Senbatsu Kagura Performance 2018

せんばつ だい かいひろしまけんほくぶ かぐら きょうえんたいかい かぐら
さつき選抜2018 第26回広島県北部神楽競演大会 in 神楽ドーム

TIME: From 1:00 pm onward (The venue will open at 10:30 am.)

PLACE: *Kagura Monzen Toji-mura*, Kagura Dome, Midori-cho, Akitakata City

ACCESS: j Take an express bus (Miyoshi / Shobara Line) from Hiroshima Bus Center (Sogo Hiroshima Department Store, 3F) and get off at Midori Kosoku (a 1 hour bus ride). Then take a taxi or

Please feel free to contact the International Exchange Lounge at 082-247-9715.

E-mail: golounge@pcf.city.hiroshima.jp

May 2018

shuttle bus to Toji-mura.

² Reservations are required for both taxi and shuttle bus.

↳ From Takata I.C. on the Chugoku Expressway, driving time to destination is 7 minutes.

TICKETS: A seats (box seats): For 6 people-¥18,000

B seats (box seats): For 6 people-¥15,000 / For one person: Adults-¥3,000 *Children-¥1,500

Non-reserved seats: Advance: Adults-¥1,500 *Children-¥700

At the door: Adults-¥1,800 *Children-¥900

² After 5 pm: Adults-¥1,200 *Children-¥600

*Children = Junior high & elementary school students

² Tickets for A & B seats and non-reserved seats are sold at *Hiroshima Yume Plaza* on Hondori Shopping Street. There are also other seat tickets available. Please call *Kagura Monzen Toji-mura* directly for further information.

INQUIRIES: *Kagura Monzen Toji-mura* 0826-54-0888

Saturday, May 26

Fukuyama Tomonoura Benten-jima Fireworks Festival

ふくやまとも うらべんでんじまはなびたいかい
福山鞆の浦弁天島花火大会

TIME: 7:00 pm – 8:30 pm

PLACE: Tomonoura, Tomo-cho, Fukuyama City

ACCESS: Get off at JR Fukuyama Station (JR Sanyo Line), then take a bus bound for Tomo and get off at Tomonoura (a 30 min. bus ride).

INQUIRIES: Executive Committee 084-928-1042

© This will be postponed until the following day if it rains heavily on the 26th.

Saturday, May 26 & Sunday, May 27

Mihara Satsuki Festival

みはら さつき まつり
三原さつき祭り

PLACE: Around *Miyaura Park*, Mihara City

ACCESS: Get off at JR Mihara Station (JR Sanyo Line), then take a shuttle bus to *Miyaura Park* or walk for 15 min.

INQUIRIES: Executive Committee 0848-62-6155

Friday, June 1 – Monday, September 10

Cormorant Fishing in Miyoshi

みよし うかい
三次の鵜飼

TIME: 7:30 pm – 8:30 pm (Excursion will be canceled if it rains heavily.)

² Please come to the reception by 7:00 pm.

PLACE: *Tokaichi Shinsui Koen* (Park), Miyoshi City

ACCESS: From JR Miyoshi Station (JR Geibi Line), walking time to destination is 15 minutes.

PASSENGER FARE:

® Sunday – Thursday: Junior high school students and above-¥3,000
Elementary school students-¥1,500

² Please note that passenger fares are different on Fridays and Saturdays, and reservations are required.

² Reservations will not be accepted on some event days (cormorant fishing festival in June and Miyoshi fireworks festival in August).

RESERVATIONS & INQUIRIES: *Miyoshi City Kanko Kyokai* (Tourist Association)

0824-63-9268

© Fishermen start out at night with lanterns and cormorants on small wooden boats. The birds are trained to catch *Ayu* (sweetfish). Very unique white-colored cormorants (a type of water fowl, usually with black feathers) were donated by Yaan in Szechuan, China, Miyoshi's friendship city, and can be seen only in Miyoshi.



Please feel free to contact the International Exchange Lounge at 082-247-9715.

E-mail: info@hijournal.jp / info@city.hiroshima.jp

May 2018

Saturday, June 2**The 39th Chugoku Region Kagura Performance**だい かいちゅうごくち ほうせんぱつか くらきょうえんたいかい
第39回 中国 地方 選抜 神楽 競演 大会**TIME:** 11:30 pm – 11:00 pm (the venue will open at 10:00 am.)**PLACE:** *Togouchi Fureai Center*, Akiota-cho**ACCESS:** • From Hiroshima Bus Center (*Sogo Hiroshima Department Store*, 3F), take a bus bound for Sandankyo and get off at Akiota-cho Yakuba-mae. Walking time to destination is 1 minute.
From Togouchi I.C. on the Chugoku Expressway, driving time to destination is 5 minutes.**TICKETS:** Advance: Adults-¥2,100 Senior high, junior high & elementary school students-¥500
At the door: Adults-¥2,600 Senior high, junior high & elementary school students-¥500
² Advance tickets are sold at *Hiroshima Yume Plaza* on Hondori Shopping Street.**INQUIRIES:** *Akiota-cho Shoko Kai* 0826-28-2504**June 2 (Sat.), 3 (Sun.), 9 (Sat.) & 10 (Sun.)****Annual Open House at Yoshimizuen Garden**よしみずえんいっばんこうかい
吉水園 一般公開**TIME:** 9:00 am – 5:00 pm**PLACE:** Yoshimizuen Garden, Kake, Akiota-cho**ACCESS:** From Togouchi I.C. on the Chugoku Expressway, driving time to destination is 15 minutes.**ADMISSION FEE:** 15 years old and above-¥200, 14 years old and under-Free**INQUIRIES:** *Michi no Eki Raimu Togouchi* (Akiota-cho Tourist Association) 0826-28-1800© *Kake Kagura* performance will be held at Nagao Shrine, Akiota-cho from 11:30 pm on June 2 and 3 (free admission). Other events will also be held on June 2 and 3 in the Kake area.**Sunday, June 3****Mibu-no Hanataue (Rice-Planting Festival) in Kitahiroshima-cho**みぶ はな
壬生の花たうえ
田植**TIME:** w *Michi-yuki* (parade) – From 10:50 am onward

w Rice-planting – From 2:00 pm onward

PLACE: w *Michi-yuki* (parade) – From Mibu Shopping Street to the special venue for rice-planting

w Rice-planting – Special venue for rice-planting

ACCESS: Take an express bus bound for Miyoshi / Shobara from Hiroshima Bus Center (*Sogo Hiroshima Department Store*, 3F) and get off at Chiyoda I.C. Walking time to destination is 10 minutes.**INQUIRIES:** *Kitahiroshima-cho Kanko Kyokai* (Tourist Association) 0826-72-6908© *Mibu-no Hanataue* is a traditional rice-planting festival which has been designated as an Important Intangible Folk Cultural Property of Japan. Beautifully decorated cattle will cultivate the rice fields and women dressed in traditional costumes called *Saotome* will plant rice while *Taiko* drums are played. UNESCO designated this festival as a “masterpiece of the oral and intangible heritage of humanity” in 2011.**▼ Kagura Performance ▼****DATE & TIME:** Sunday, June 3 From 9:00 am onward (doors will open at 8:30 am.)**VENUE:** *Chiyoda Kaihatsu Center*, Kitahiroshima-cho, Yamagata-gun**TICKETS:** Adults: Advance-¥1,200 At the door-¥1,500

Junior high and Elementary school students-¥500 (day-of-performance tickets only)

Preschoolers-Free

Please feel free to contact the International Exchange Lounge at 082-247-9715.

E-mail: golounge@pcf.city.hiroshima.jp

May 2018

² Advance tickets are sold at *Hiroshima Yume Plaza* on the Hondori Shopping Street. Or, you can reserve advance tickets by phone. Please call *Kitahiroshima-cho* Tourist Association (0826-72-6908) for more information.

Events Held in Yamaguchi Prefecture

Thursday, May 3

The 16th Iwakuni Kusunoki Fireworks Festival

だい かいいわくに はなび
第16回 岩国くすのき花火フェスティバル

TIME: Festival – 11:00 am – 8:30 pm / Fireworks Festival – From 7:30 pm onward

PLACE: Around *Kusunoki Hiroba*, Kusunoki-cho, Iwakuni City

ACCESS: From JR Iwakuni Station (JR Sanyo Line), time to destination by bus is 10 minutes.

INQUIRIES: Executive Committee 0827-21-0643

© This will be cancelled or postponed if it rains heavily on the day.

Saturday, May 5

The 42nd Anniversary JMSDF/MCAS Iwakuni Friendship Day 2018

だい かいかいじょうじえいたい べいかいへいたいいわくにこうくうきち
第42回 海上自衛隊 / 米海兵隊 岩国航空基地 フレンドシップデー2018

TIME: 7:00 am – 5:00 pm (entry allowed up to 2:00 pm) / Air Show: 10:00 am – 4:30 pm

² The entrance gate open hours: 7:00 am – 2:00 pm for pedestrians and bicycles
6:00 am – 1:00 pm for buses

PLACE: MCCS Iwakuni, Iwakuni City

ACCESS: Get on a shuttle bus (one way fare: adults-¥400 / children-¥200) to the venue or walk about 30 minutes from JR Iwakuni Station (JR Sanyo Line).

INQUIRIES: Iwakuni Base 0827-79-6227 or 0827-79-5551

HP: <http://www.mcasiwakuni.marines.mil/> Event HP: <http://friendship-day.net/>

Kankou Shinkou Ka, Iwakuni City Hall 0827-29-5116

© This is the annual opening of the Iwakuni Base. Please check the event website for more information.

© There will be a security check at the entrance. You will be required to show your ID with a photo (e.g. driver's license, passport, resident card (for foreign nationals), etc.)

Friday, June 1 – Monday, September 10

Cormorant Fishing in Iwakuni

きんたいきょう うかい
錦帯橋の鵜飼

TIME: 7:00 pm – 9:00 pm

PLACE: Nishiki-gawa River & Kintaikyo Bridge, Iwakuni City

ACCESS: Get off at JR Iwakuni Station (JR Sanyo Line) and take a bus bound for Kintaikyo Bridge. Get off at Kintaikyo (a 20 min. bus ride).

PASSENGER FARE: Adults-¥2,000 Children-¥1,000

² The fare will be temporarily changed on August 4, the day of the fireworks festival.

RESERVATIONS & INQUIRIES:

Iwakuni City *Kanko Kyokai* (Tourist Association) & *Ukai Office* 0827-28-2877

© Originating about 400 years ago, cormorant fishing under lit lanterns is a summer tradition in Iwakuni.

Please feel free to contact info@hiroshima.jp or [082-247-9715](tel:082-247-9715).
E-mail: info@hiroshima.jp



Municipal Facilities



G Facilities

(Address / Telephone / Open Hours / Closed / Admission Fee / URL)

Admission is generally allowed up to 30 min. prior to closing.

P Hiroshima City Forest Park & Insectarium

(173 Fujigamaru, Fukuda-cho, Higashi-ku 732-0036 / Forest Park: 899-8241, Insectarium: 899-8964 / Forest Park: 9:00 am - 4:30 pm; Insectarium: 9:00 am - 4:30 pm / Closed: Forest Park - May 16, 23 & 30; Insectarium - Wednesdays (except May 2) / Admission Fees for the Insectarium: Adults-¥510, Seniors & High school students-¥170, Junior High & Elementary school students-Free (Free admission for High school students on Saturdays (except on national holidays and during school holidays)) / Forest Park: <http://www.daiichibs-shitei.com/forest/> Insectarium: <http://www.hiro-kon.jp/>)

Events at the Forest Park

- ! **Spring Festival** / Until Sunday, May 13
 - { Flower pots will be given away to the first 1,000 people at *Chusha Gate* from 9:00 am on May 4.
 - ✓ Free shuttle bus service to the park will be available on May 3, 4, 5 & 6
 - In front of Seven-Eleven Hiroshima Umaki Shop ◯ Forest Park:
 - Operational hours: 8:50 am - 4:30 pm
- w **Food Kiosk Corner** / Thursday, May 3 - Saturday, May 5 / 9:30 am - 2:00 pm / *Shibafu Hiroba* / Fee: Free
- w **Nature Craft Workshop** / Thursday, May 3 / 9:30 am - 2:30 pm / For junior high school students and under / *Shibafu Hiroba* / Fee: Free ² Participants will be accepted on the day until materials run out. ² This will be canceled if it rains.
- w **Game: Guess the Tree Leaves** / Friday, May 4 / 9:00 am - 2:30 pm / For high school students and under / *Shibafu Hiroba* / Fee: Free ² The first 300 participants will be accepted on the day.
- w **Play Corner** / Friday, May 4 / 9:00 am - 3:00 pm / *Shibafu Hiroba* / Fee: Free
 - J You can enjoy playing with traditional Japanese toys, such as *koma* (spinning tops) and *kendama*.
- w **Spinning Top Performance** / Friday, May 4 / 1:00 pm - 1:30 pm / *Shibafu Hiroba* / Fee: Free

w **Maple Kaiser Show** / Saturday, May 5 / 11:00 am - noon / *Shibafu Hiroba* / Fee: Free ² This will be canceled if it rains.

J *Maple Kaiser* is a local hero in Hiroshima.

w **Make and Fly a Paper Airplane** / Saturday, May 5 / 1:00 pm - 3:00 pm / For elementary school students and under, and their guardians / *Shibafu Hiroba* / Fee: Free ² This will be canceled if it rains. ² This workshop will be held twice during these two hours. The first 50 groups will be accepted from 12:30 pm on the day for each time slot.

w **Nature Game** / Sunday, May 6 / 1:00 pm - 3:00 pm / *Shibafu Hiroba* / Fee: Free ² The first 50 participants will be accepted from 12:30 pm on the day.

w **Photo Lesson** / Saturday, May 12 / 10:00 am - noon / *Shibafu Hiroba, Kyukei-jo* / Fee: Free ² The first 20 participants will be accepted from 9:30 am on the day. ² This will be canceled if it rains.

w **Sianka'an Saxophone Concert** / Saturday, May 12 / 1:00 pm - 1:30 pm / *Shibafu Hiroba, Kyukei-jo* / Fee: Free

! **Nature Observation: Bird Watching** / Sunday, May 20 / 10:00 am - noon / For junior high school students and above / around *Ringyo Taiken Hiroba* / Fee: Free ² The first 20 participants will be accepted at the venue on the day. ² This will be canceled if it rains.

! **Lecture on the Grass Whistle** / Sunday, May 20 / 1:00 pm - 3:00 pm / *Shibafu Hiroba, Kyukei-jo* / Fee: Free

! **Let's Climb a Tree** / Saturday, May 26 / j 10:00 am - noon k 1:00 pm - 3:00 pm / For elementary school students and under / *Shibafu Hiroba* / Fee: Free ² The first 80 people will be accepted from 9:30 am on the day. ² This will be canceled if it rains.

! **Hiroshima Yamanohi (mountain day) Events** / Sunday, June 3

w **Green Adventure** / 9:00 am - 2:00 pm / Meeting place: Next to *Kanri Center* ² Elementary school students should be accompanied by their guardians. ² Applications will be accepted on the day. ² This activity will be canceled if it rains. ² Participants will walk around the park for 1 hour; please wear comfortable shoes.

w **Stamp Rally** / 9:30 am - 2:00 pm / *Shibafu Hiroba* ² The first 200 people will be accepted on the day. ² This will be canceled if it rains.

Please feel free to contact the International Exchange Lounge at 082-247-9715.

E-mail: golounge@pcf.city.hiroshima.jp

May 2018

w Nature Game / 1:00 pm - 3:00 pm / *Shibafu Hiroba*

² The first 50 people will be accepted from 12:30 pm on the day.

w Hiking & Cleanup the Trail on Mt.

Fujigamaru / Meeting time: 9:20 am / For the 3rd grade of elementary school students and above / *Shibafu Hiroba*

To APPLY: Send an *ofuku-hagaki* (return postcard) with participants' names, address and telephone number, age and the event name **トレイル&クリーン 作戦** ("Trail & clean sakusen") to the park postmarked by Thursday, May 24. 20 people will be selected at random by a drawing of names.

Events at the Insectarium

« Free admission on May 4

« Free admission for high school students on May 5

! **Touch Insects!** / Saturday, May 12 and 19; Saturday, June 2, 9, 16, 23 & 30 / • 10:00 am - noon , 1:00 pm - 3:00 pm / Fee: Museum admission fee

E The Hiroshima Botanical Garden

(3-495 Kurashige, Saeki-ku 731-5156 / 922-3600 / 9:00 am - 4:30 pm / Closed on Fridays (except May 4) / Adults-¥510, Seniors & High school students-¥170, Junior High and Elementary school students-Free (Free admission for High school students on Saturdays & May 5 (except on national holidays and during school holidays)) / <http://www.hiroshima-bot.jp/>)

<Exhibitions> Exhibitions will close at 3:30 pm on their last day.

√ *Tenji Shiryo-kan*

{ **Pressed Flowers** / Saturday, April 7 - Sunday, May 6

{ **Botanical Arts** / Tuesday, May 8 - Wednesday, June 6

√ *Tenji Onshitsu (hothouse exhibitions)*

{ **Sekkoku & Chosei-ran** (Japanese wild orchids) / Saturday, May 5 - Thursday, May 10

{ **Herbs** / Saturday, May 12 - Thursday, May 24

√ *Okugai Tenji-jo (outdoor exhibitions)*

{ **Clematis** / Saturday, April 28 - Sunday, May 6

<Events>

{ **Events on Greenery Day & Botanical Garden Day** / Friday, May 4

J Various events such as a potted plant give away (for the first 1,000 people) and concert(s) will be held.

² Admission free on this day (parking fees remain unchanged).

{ **Rose Festival** / Saturdays & Sundays between May 12 and May 27 (May 12, 13, 19, 20, 26 & 27)

{ **Hill Climbing for Kindergarteners** / Sunday, June 3 / 1:30 pm - 3:00 pm / For kindergarteners and their guardians / Fee: ¥100 per person

To APPLY: Send an *ofuku-hagaki* (return postcard) with participants' names, children's ages, address and telephone number and the event name **先生と子供のための森の幼稚園** ("Sensei to kodomo no tameno mori no youchien") to the Botanical Garden by Monday, May 14. 20 groups will be selected at random by a drawing of names.

<Lectures>

{ **How to Grow Clematis** / Thursday, May 3 / 1:30 pm - 2:30 pm

{ **Sekkoku** (Japanese wild orchids) / Sunday, May 6 / 1:30 pm - 2:30 pm

{ **Junior Project** / Sunday, May 13 / j 11:00 am - noon k 1:30 pm - 2:30 pm

ゝ 5-Days Children's Museum of Culture and Science

(5-83 Moto-machi, Naka-ku 730-0011 / 222-5346 / 9:00 am - 5:00 pm / Closed on May 1, 2, 7 - 10, 14, 21 & 28 / Admission fee for planetarium is required (see below).

/ <http://www.pyonta.city.hiroshima.jp/>)

Planetarium

I **Admission Fee for Planetarium:**

Adults-¥510, Seniors & High school students-¥250, Junior High & Elementary school students-Free ² Free admission for High school students on Saturdays (except on most national holidays and during school holidays) & May 5.

Admission fee for adults is ¥250 on the second Saturday of every month (except on most national holidays and during school holidays) & May 5.

¶ **Children's Day (May 5) Special Program: Explore the Spring Starry Sky with Music and Quiz** / Saturday, May 5 / 4:00 pm / Adults & Seniors-¥250

¶ **Planetarium Programs** / Adults-¥510, Seniors & High school students-¥250

Ⓔ **Adventure to Mars (45 min.)** / Until Sunday, September 2

Time Schedule

√ Weekdays: 11:00 am

√ Sat., Sun., national holidays:

• 10:00 am , 3:00 pm

Please feel free to contact the International Exchange Lounge at 082-247-9715.

E-mail: golounge@pcf.city.hiroshima.jp

May 2018

- **Feel the Earth ~ Music by Taro Hakase ~ /**
Until Monday, July 16

Time Schedule

- ✓ Weekdays: 2:00 pm
- ✓ Sat., Sun., national holidays:
 - 11:00 am , 2:00 pm

- ¶ **360° Full Dome Show: HAYABUSA2 - Return to the Universe (40 min.) /** Until Friday, October 26 / Adults-¥510, Seniors & High school students-¥250

Time Schedule

- ✓ Weekdays: 3:00 pm
- ✓ Sat., Sun., national holiday: 1:00 pm

- ¶ **Refretarium: 2018 Spring Program /** Until Friday, June 8

Time Schedule

- ✓ Weekdays: 1:00 pm
- ✓ Sat., national holiday: 4:00 pm

Admission Fee

High school students and above-¥200

² This is a program to refresh your mind and body during lunch time while watching the starry sky and listening to music. Although the main target of this program is adults, anyone who wishes to rejuvenate themselves is welcome.

- ¶ **Starry Sky Tour: Hayabusa2 has been reaching its destination, the Asteroid "Ryugu" /** Sundays until Sunday, July 15/ 4:00 pm - 4:50 pm / Adults-¥510, Seniors & High school students-¥250

Events

- ¶ **Exhibition: Shape of the Universe I /** Until Sunday, June 3 / 3F, *Kikaku Tenji* Hall / Free admission
- ¶ **Magic Show /** Saturday, May 5 / • Noon - 12:45 pm , 2:30 pm - 3:15 pm (Doors will open at 11:45 am for • & at 2:15 pm for , .) / Apollo Hall (250 seats) / Free admission
- ¶ **Craft Workshops /** May 3 (Thurs.), 6 (Sun.), 19 (Sat.) & 27 (Sun.) / 1:00 pm - 3:30 pm / For children under elementary school entry age, elementary school students (1st - 3rd grade) and their guardians / 3F, *Kosaku-shitsu* (Craft Room) / Fee: ¥30 for materials
 - ² Each day's program is different. For more information, please contact the museum.
- ¶ **Science Show /** • 1:30 pm - 2:00 pm , 3:00 pm - 3:30 pm / 1F, Science Studio / Fee: Free
 - w **Popular Experiments /** Friday, May 4
 - w **Mystery of Electric Waves /** Sunday, May 20
 - w **Experiments Using Everyday Things /** Saturday, May 26



- μ The events listed below require advance applications.

To APPLY: Send an *ofuku-hagaki* (return postcard) to the museum, postmarked by each event's application deadline with the following information: applicants' names, address, telephone number, school year and the event name and time you wish to attend.

Science Workshop

- ® **Bubbles / シャボン玉名人になろう** (*"Shabondama meijin ni narou"*) / Sunday, May 20 / 1:30 pm - 4:00 pm / For elementary (3rd - 6th grade) & junior high school students / Fee: ¥100 / Closing date for applications: Sunday, May 6 ² 16 people will be selected at random by a drawing of names for each time slot.

Craft Workshops

- ® **Craft Workshops for Adults: Pottery / 大人の創作教室: 陶芸** (*"Otona no sousaku kyoushitsu: Tougei"*) / j Sunday, May 27
k Saturday, June 16 ² Participants must attend both classes. / j May 27: 9:30 am - 3:30 pm
k June 16: 1:30 pm - 4:00 pm / For high school students and above / Fee: ¥1,800 / Closing date for applications: Sunday, May 13
² 12 people will be selected at random by a drawing of names.
- ® **Craft Workshops for Adults: Tole Painting / 大人の創作教室: トールペイント** (*"Otona no sousaku kyoushitsu: Tole painting"*) / Friday, June 8 / 1:30 pm - 4:00 pm / For high school students and above / Fee: ¥1,500 / Closing date for applications: Friday, May 25
² 12 people will be selected at random by a drawing of names.

Other Workshops:

- ® **Paper Craft Workshop / 紙ニュケーション講座: 牛乳パックを变身させよう!** (*"Kami-nucation kouza: gyunyu pack wo henshin saseyou!"*) / Saturday, May 26 / 1:30 pm - 4:00 pm / For elementary & junior high school students / Fee: ¥200 / Closing date for applications: Saturday, May 12 ² 20 people will be selected at random by a drawing of names.

- J **Hiroshima City Asa Zoological Park** (Asa-cho Dobutsuen, Asakita-ku 731-3355 / 838-1111 / 9:00 am - 4:30 pm / Closed on Thursdays (except May 3) / Adults-¥510, Seniors & High school students- ¥170, Junior High & Elementary school students-Free / <http://www.asazoo.jp/>)

Please feel free to contact the International Exchange Lounge at 082-247-9715.

E-mail: golounge@pcf.city.hiroshima.jp

May 2018

- **Demonstration of Sheep Shearing** / Thursday, May 3 & Friday, May 4 / j 10:30 am - 1:30 pm / *Peechiku Park*
- **Learn How to Spin Wool** / Saturday, May 5 / 10:00 am - noon / *Yagai Stage* ² The first 90 participants will be accepted from 9:00 am at the *Yagai Stage*.
- **Backyard Guide Tour** / Saturday, May 5, 12 & 19 / j 11:00 am - 1:30 pm / Please gather near the entrance at 9:00 am on each activity day. The first 20 - 40 people can participate. The number of participants will differ depending on where you visit. We will explore a different place on each trip.
- **Sketching Event** / Sunday, May 13 / 9:00 am - 1:00 pm / For preschoolers, elementary and junior high school students
² Applications will be accepted until 11:00 am on the day at the main entrance.
² Drawing paper will be given to each person. Please bring other painting tools with you.
- **Giant Salamander Facility Tour** / Saturday, May 26 / 11:00 am - 11:45 am
² Participation tickets will be distributed from 9:00 am at the main entrance until 20 spots are filled.
- **Meet the Black Rhinoceros, *Hana*** / Saturday, May 26 / • 1:30 pm , 1:45 pm
² Participation tickets will be distributed from 9:00 am at the main entrance until 10 spots are filled for each time slot.
³ The black rhinoceros, *Hana*, is the world's oldest living black rhinoceros.
- **Observation of *Mori Ao-gaeru* (Forest green treefrog) and their Eggs** / Sunday, May 27 / j 11:00 am - 11:30 am - 1:00 pm - 1:30 pm
 l 2:00 pm - 2:30 pm / *Mori Ao-gaeru's Pond*

U **Numaji Transportation Museum (Hiroshima City Transportation Museum)**
 (2-12-2 Chorakuji, Asaminami-ku 731-0143 / 878-6211 / 9:00 am - 5:00 pm / Closed on Mondays, May 8, 9 & 10 / Adults-¥510, Seniors & High school students-¥250, Junior High school students and under-Free
 / <http://www.vehicle.city.hiroshima.jp>)

Ž **Special Exhibition: *Shinkasen* Components** / Until Sunday, May 20 / 9:00 am - 5:00 pm

ê **Special Exhibition-Related Events** ê

- ^a **Vehicle Land: Playing with Toy Vehicles** / Saturday, May 19 & Sunday, May 20 / 1:00 pm - 4:00 pm / 1F, *Tamokuteki Hall* / Fee: Free
- ^a **Children's Craft Workshops** / May 3 (Thurs.), 4 (Fri.), 5 (Sat.) & 20 (Sun.) / 1:00 pm - 3:30 pm / For preschoolers, elementary school students and their guardians / 1F,

Craft Room / Fee: ¥50 for materials
² The first 100 groups for each time slot can participate on the day.

- ^a **Craft Workshop: Make a *Shinkasen* with a Milk Carton** / Saturday, May 19 / j 1:00 pm - 2:00 pm - 2:30 pm - 3:30 pm / Fee: ¥50
TO APPLY: Send an *ofuku-hagaki* (return postcard) with all applicant's name, address, telephone number, school name & grade, time (• or ,) you wish to attend and the event name 作ろう!新幹線 (“*Tsukurou! shinkansen*”) to the museum by Wednesday, May 9. 30 groups will be selected at random by a drawing of names for each time slot.

Ž **Science Show: Experiment Show with Electricity** / Saturday, May 12 & Sunday, May 13 / j 11:30 am - 11:50 am - 1:30 pm - 1:50 pm - 2:30 pm - 2:50 pm / 1F, *Tamokuteki Hall* / Fee: Free

Ž **Exhibition on a Streetcar Exposed to the A-Bomb** / May 3 (Thurs.), 4 (Fri.), 5 (Sat.) & 19 (Sat.) / j 11:00 am - noon - 1:30 pm - 3:00 pm / *Okugai Hiroba* (outdoor open space) / Fee: Free ² Exhibition will be canceled if the weather is bad.

Ž **Children's Craft Workshops** / Sunday, May 6, 13 & 27 / 1:00 pm - 3:30 pm / For preschoolers, elementary school students and their guardians / 1F, Craft Room / Fee: ¥50 for materials
² The first 100 groups for each time slot can participate on the day.

Ø **Hiroshima City Ebayama Museum of Meteorology**

(1-40-1 Eba-minami, Naka-ku 730-0835 / 231-0177 / 9:00 am - 5:00 pm / Closed on Mondays, May 1 & 2 / Adults-¥100, Seniors & High school students-¥50, Junior High & Elementary school students-Free (Free admission for High school students on Saturdays except during school holidays)
 / <http://www.ebayama.jp/>)

T **Science Shows** / j 1:30 pm - 2:00 pm
 k 3:00 pm - 3:30 pm

- ® **Bubbles** / Thursday, May 3 - Sunday, May 6
- ® **Fire Experiment** / May 13 (Sun.), 20 (Sun.), 26 (Sat.) & 27 (Sun.)

T **Science Workshops** / 1:00 pm - 3:30 pm / For junior high school students and under
² The first 50 participants will be accepted from 10:00 am on the day.

- ® **Clay Magnet** / Saturday, May 12 / Fee: ¥100 for materials

Please feel free to contact the International Exchange Lounge at 082-247-9715.

E-mail: golounge@pcf.city.hiroshima.jp

May 2018

® Paper Fan / Saturday, May 19 / Fee: ¥190 for materials

T Special Event on Meteorological Day / Sunday, June 3

H Hiroshima City Museum of History and Traditional Crafts

(2-6-20 Ujina-miyuki, Minami-ku 734-0015 / 253-6771 / 9:00 am - 5:00 pm / Closed on Mondays, May 1, 8 & 9 / Adults-¥100, Seniors & High school students-¥50, Junior high school students and under-Free / <http://www.cf.city.hiroshima.jp/kyodo/>)

P Special Exhibitions: Everyday Life during the Wart from Comics, "In this Corner of the World" / Saturday, April 14 - Sunday, July 8

P Workshops, etc.

® Make a Hair Accessory with *Mizuhiki* / Friday, May 18 / 10:00 am - noon / 18 years old and above / Fee: ¥500 (Admission fee for the museum is also required.)

≥ Applications will be accepted by phone or fax between May 2 and 5. 20 people will be selected at random by a drawing of names.

® Indigo Dyeing a Handkerchief / Saturday, June 2 / 1:00 pm - 3:00 pm / 4 years old - Elementary school students ≥ Preschoolers should be accompanied by their guardians. / Fee: ¥350 (Admission fee for the museum is also required.)

≥ Applications will be accepted by phone or fax between May 2 and 5. 30 people will be selected at random by a drawing of names.

® Indigo Dyeing a T-shirt (for adults) / Sunday, June 10 / 1:00 pm - 3:00 pm / 18 years old and above / Fee: ¥400 (Admission fee for the museum is also required.)

G Bring a T-shirt with you.

≥ Applications will be accepted by phone or fax between May 2 and 5. 20 people will be selected at random by a drawing of names.

® Indigo Dyeing a T-shirt (for children) / Saturday, June 30 / 1:00 pm - 3:00 pm / Elementary school students / Fee: ¥400 (Admission fee for the museum is also required.)

G Bring a T-shirt with you.

≥ Applications will be accepted by phone or fax between June 1 and 5. 30 people will be selected at random by a drawing of names.



5 Hiroshima City Cinematographic and Audio-Visual Library

(3-1 Moto-machi, Naka-ku 730-0011 / 223-3525 / 10:00am - 8:00pm (Tue.-Sat.), 10:00 am - 5:00 pm (Sunday, national holidays & August 6) / Closed on Mondays, May 1 & 8 / 35mm Film

Showings Adults-¥510, Seniors & High school students-¥250, Junior high school students and under-Free; Other Film Showings Adults-¥380, Seniors & High school students-¥180, Junior high school students and under-Free, Admission free for foreign students (Please show your student ID or the Hiroshima International Center Complimentary Pass.) /

<http://www.cf.city.hiroshima.jp/eizou/>)

• May Special Showings of Masterpieces of Japanese Film: *Jidaigeki* (period dramas) (Screened in Japanese only)

I Admission Fee: Adults-¥510, Seniors (65 years old and up) & High school students-¥250, Junior high & Elementary school students-Free
 « Saturday, May 19 & 26: Free admission for high school students

¥ Thursday, May 17 / j 10:30 am k 2:00 pm
 f 6:00 pm

Miyamoto Musashi / 宮本武蔵 (1961, Toei (Kyoto), 110 min., color, 35 mm film) / Director: Tomu Uchida / Cast: Kinnosuke Nakamura, Isao Kimura, Wakaba Irie, Satomi Oka

¥ Friday, May 18 / j 10:30 am k 2:00 pm
 f 6:00 pm

Miyamoto Musashi: *hannya-zaka no kettou* / 宮本武蔵 般若坂の決斗 (1962, Toei (Kyoto), 107 min., color, 35 mm film) / Director: Tomu Uchida / Cast: Kinnosuke Nakamura, Wakaba Irie, Ryunosuke Tsukigata, Michiyo Kogure

¥ Saturday, May 19 / j 10:30 am k 2:00 pm
 f 6:00 pm

Miyamoto Musashi: *nito-ryu no kaigan* / 宮本武蔵 二刀流の開眼 (1963, Toei (Kyoto), 104 min., color, 35 mm film) / Director: Tomu Uchida / Cast: Kinnosuke Nakamura, Wakaba Irie, Ken Takakura, Shinjiro Ehara

¥ Sunday, May 20 / j 10:30 am k 2:00 pm

Miyamoto Musashi: *Ichijo-ji no kettou* / 宮本武蔵 一乗寺の決斗 (1964, Toei (Kyoto), 128 min., color, 35 mm film) / Director: Tomu Uchida / Cast: Kinnosuke Nakamura, Isao Kimura, Kaneko Iwasaki, Ken Takakura

¥ Wednesday, May 23 / j 10:30 am k 2:00 pm
 f 6:00 pm

Miyamoto Musashi: *Ganryu-jima no kettou* / 宮本武蔵 巖流島の決斗 (1965, Toei (Kyoto), 121 min., color, 35 mm film) / Director: Tomu Uchida / Cast: Kinnosuke Nakamura, Ken Takakura, Wakaba Irie, Chiezo Kataoka

Please feel free to contact the International Exchange Lounge at 082-247-9715.

E-mail: golounge@pcf.city.hiroshima.jp

May 2018

¥ Thursday, May 24 / j 10:30 am k 2:00 pm

f 6:00 pm

Yoto monogatari Hana no Yoshiwara hyaku-nin
giri / 妖刀物語 花の吉原百人斬り (1960, Toei
(Kyoto), 109 min., color, 35 mm film) / Director:
Tomu Uchida / Cast: Chiezo Kataoka, Yoshie
Mizutani, Isao Kimura, Akiko Santo

¥ Friday, May 25 / j 10:30 am k 2:00 pm

f 6:30 pm

Irezumi / 刺青 (1966, Daiei (Kyoto), 86 min.,
color, 35 mm film) / Director: Yasuzo Masumura /
Cast: Ayako Wakao, Akio Hasegawa, Gaku
Yamamoto, Kei Sato

¥ Saturday, May 26 / j 10:30 am k 2:00 pm

f 6:00 pm

Kutsukake Tokijiro Yukyo ippiki / 沓掛時次郎 遊
侠一匹 (1966, Toei (Kyoto), 90 min., color, 35 mm
film) / Director: Tai Kato / Cast: Kinnouke
Nakamura, Junko Ikeuchi, Kiyoshi Atsumi,
Chiyonosuke Azuma

¥ Sunday, May 27 / j 10:30 am k 2:00 pm

Ryoma ansatsu / 竜馬暗殺 (1974, ATG, Eiga
Dojinsha, 118 min., B&W, 35 mm film) / Director:
Kazuo Kuroki / Cast: Yoshio Harada, Renji Ishibashi,
Yusaku Matsuda, Rie Nakagawa

¥ Wednesday, May 30 / j 10:30 am k 2:00 pm

f 6:00 pm

Yari no Gonzo / 鑓の権三 (1986, Hyogensha,
Shochiku, 126 min., color, 35 mm film) / Director:
Masahiro Shinoda / Cast: Hiromi Go, Shima
Iwashita, Shohei Hino, Misako Tanaka

¥ Thursday, May 31 / j 10:30 am k 2:00 pm f

6:00 pm

Sen no Rikyu hongakubo ibun / 千利休 本覺坊
遺文 (1989, Seiyu, 108 min., color, 35 mm film) /
Director: Kei Kumai / Cast: Eiji Okuda, Toshiro
Mifune, Kinnosuke Yorozuya, Go Kato

• Family Theater

(Animated Films are in Japanese only)

I Admission Fee: Adults-¥380, Seniors (65 years
old and above)-¥180, High school students
Junior high & under-Free

¥ Saturday, May 5 / j 10:30 am k 2:00 pm

Sinbad: mahou no lamp to ugoke shima / シンドバ
ッド 魔法のランプと動く島 (2016, Project Sinbad,
50 min., color, Blu-ray) / Director: Shinpei Miyashita
/ Cast (voice): Tomo Muranaka, Momoko Tanabe,
Takeshi Kaga, Nao Nagasawa

• Festiwal Filmów Polskich (Screened in original
language with Japanese subtitles only)

I Admission Fee: Adults-¥380, Seniors (65 years
old and up) & High school students-¥180,
Junior high & Elementary school students-Free
« Saturday, May 12: Free admission for high
school students

¥ Wednesday, May 2 / j 2:00 pm k 6:30 pm

Cień (1956, 94 min., B&W, Japanese subtitles,
Digital) / Director: Jerzy Kawalerowicz

¥ Thursday, May 3 / j 10:30 am k 2:00 pm

Pociąg (1959, 98 min., B&W, Japanese subtitles,
Digital remastering) / Director: Jerzy Kawalerowicz

¥ Friday, May 4 / j 10:30 am k 2:00 pm

Matka Joanna od Aniołów (1961, 111 min., B&W,
Japanese subtitles, Digital remastering) / Director:
Jerzy Kawalerowicz

¥ Sunday, May 6 / j 10:30 am k 2:00 pm

Faraon (1966, 152 min., color, Japanese subtitles,
Digital remastering) / Director: Jerzy Kawalerowicz

¥ Thursday, May 10 / j 2:00 pm k 6:30 pm

Zbyszek (1969, 73 min., B&W, Japanese subtitles,
DVD quality) / Director: Jan Laskowski

¥ Friday, May 11 / j 2:00 pm k 6:30 pm

Autor Solaris (2016, 56 min., color, Japanese
subtitles, Digital) / Director: Borys Lankosz

¥ Saturday, May 12 / j 2:00 pm k 6:00 pm

Dwie Korony (2017, 92 min., color, Japanese
subtitles, Digital) / Director: Michał Kondrat

¥ Sunday, May 13 / j 10:30 am k 2:00 pm

Sztuka Kochania. Historia Michaliny
Wiślockiej (2017, 120 min., color, Japanese
subtitles, Digital) / Director: Maria Sadowska

¥ Wednesday, May 16 / j 2:00 pm k 6:30 pm

Beksińscy. Album Wideofoniczny (2017, 80
min., color, Japanese subtitles, Digital) / Director:
Marcin Borhardt



Please feel free to contact the International Exchange Lounge at 082-247-9715.

E-mail: golounge@pcf.city.hiroshima.jp

May 2018

Japanese Language Classes in Hiroshima City

These are Japanese language classes held at community halls, and other public facilities in Hiroshima City. The lessons are free for the most part; however, some classes may charge a fee for materials. Some classes require you to observe the lesson in advance. There is also the possibility that the information mentioned below has changed. Please inquire at the relevant class for further information before you attend the lesson.

As of April 2018

≪ Naka Ward

#1 Hiroshima Japanese Language Class

PLACE: j *Hiroshima Kokusai Kaigi-jo*, 3F *Kenshu-shitsu* (1-5 Nakajima-cho, Naka-ku)

k *Hiroshima Kokusai Center* (Hiroshima International Center) (Crystal Plaza 6F, 8-18 Naka-machi, Naka-ku)

DATE & TIME:

j Every Wednesday, 6:30pm – 8:00pm (Beginner)

j k Every Saturday, 10:00am – noon

TUITION: Free

ENROLLMENT: Enroll any time you please

INQUIRIES: Hiroshima Japanese Language Class

Tel. 090-1339-1454

Email: Hiroshima.nihongo@gmail.com

ACCESS:

Hiroshima Kokusai Kaigi-jo

○ Located in Peace Memorial Park

j Take bus No.24 bound for *Yoshijima Eigyosho* (吉島営業所) and get off at *Heiwa Kinen Koen* (平和記念公園). It is a 3 min. walk from there.

k It is a 5 min. walk from the *Gembaku Dome-mae* (原爆ドーム前) Streetcar Stop.

Hiroshima Kokusai Center

(Hiroshima International Center)

○ It is a 5 min. walk from the *Fukuro-machi* (袋町) Streetcar Stop. Near the ANA Crowne Plaza Hotel Hiroshima

URL: <http://hiroshimakyoshitsu.wix.com/nihongo>

Facebook: ^{Hiroshima Nihongo Kyoshitsu} ひろしま 日本語 教室

Hiroshima Japanese Class

#2 Japanese Language Class Peace

PLACE: Hiroshima YMCA (7-11 Hatchobori, Naka-ku)

DATE & TIME: Every Saturday, 1:00pm – 3:00pm

TUITION: Free

ENROLLMENT: Enroll any time you please

INQUIRIES: Japanese Language Class Peace

Email: nihongo205peace@gmail.com

ACCESS: Hiroshima YMCA

j From Hiroshima Train Station (south exit), take any streetcar other than number 5 to *Tatemachi* (立町) stop. It is a 3 minute walk from there.

k From Hiroshima Bus Center, it is a 5 minute walk.

#3 Nihongo Gakushu Kai

PLACE: *Hiroshima Kokusai Kaigi-jo*, 3F *Kenshu-shitsu* (1-5 Nakajima-cho, Naka-ku)

DATE & TIME: Every Thursday, 10:00 am – noon

TUITION: 100yen/month

ENROLLMENT: Enroll any time you please

INQUIRIES: Nihongo Gakushu Kai Tel. 082-923-1580

URL:

<http://nihongo730.blog.fc2.com/blog-entry-2.html>

ACCESS:

j Take bus No.24 bound for *Yoshijima Eigyosho* (吉島営業所) and get off at *Heiwa Kinen Koen* (平和記念公園). It is a 3 min. walk from there.

k It is a 5 min. walk from the *Gembaku Dome-mae* (原爆ドーム前) Streetcar Stop.



#4 Japanese Study Class for Returnees from China Chugoku Kikokusha no Kai

PLACE: *Chuo Komin-kan*

(24-36 Nishi-hakushima-cho, Naka-ku)

DATE & TIME: Every Monday, Wednesday and Saturday, 10:00 am – noon

INQUIRIES: Chuo Komin-kan Tel. 082-221-5943

ACCESS: Located near Moto-machi High School

j Take a bus bound for *Yokogawa* (横川) or *Daigaku Byoin* (大学病院) and get off at *Nishi-hakushima* (西白島). It is a 5 min. walk from there.

k It is a 5 min. walk from the *Johoku* (城北) Station (Astramline).

#5 Harukaze

Japanese Volunteer Group

PLACE: International Exchange Lounge (*Hiroshima Kokusai Kaigi-jo*, 1F) or schools that students are attending

DATE & TIME: Every Saturday, 10:00 am – noon at the International Exchange Lounge

TUITION: Free

INQUIRIES: Tel. 082-277-8330 (Sato)

Email: harukaze@feel.ocn.ne.jp

ACCESS: International Exchange Lounge

j Take bus No.24 bound for *Yoshijima Eigyocho* (吉島営業所) and get off at *Heiwa Kinen Koen* (平和記念公園). It is a 3 min. walk from there.

k It is a 5 min. walk from the *Gembaku Dome-mae* (原爆ドーム前) Streetcar Stop.

≪ Minami Ward

#6 Wednesday

Japanese Language Club

PLACE: *Ryugakusei Kaikan*

Hiroshima City International House

(1-1 Nishi-Kojin-machi, Minami-ku)

DATE & TIME: Every Wednesday, 10:00 am – noon

TUITION: Free

ENROLLMENT: Enroll any time you please

INQUIRIES: *Ryugakusei Kaikan* Tel. 082-568-5931

ACCESS: It is a 5 min. walk towards east from JR Hiroshima (広島) Station, next to the Ark Hotel.

#7 Minna-no-Nihongo Class

PLACE: *Ryugaku-sei Kaikan*

Hiroshima City International House

(1-1 Nishi-Kojin-machi, Minami-ku)

DATE & TIME: Every Saturday, 1:30 pm – 3:30 pm

TUITION: Free

ENROLLMENT: Enroll any time you please

INQUIRIES: *Ryugaku-sei Kaikan* Tel. 082-568-5931

ACCESS: It is a 5 min. walk towards east from JR Hiroshima (広島) Station, next to the Ark Hotel.

#8 Fureai Japanese Language Class

PLACE: *Aosaki Komin-kan*

(1-12-7 Aosaki, Minami-ku)

DATE & TIME: Every Saturday, 7:00 pm – 9:00 pm

TUITION: Free

ENROLLMENT: Enroll any time you please

INQUIRIES: *Aosaki Komin-kan* Tel. 082-281-3802

ACCESS: It is a 5 min. walk from the JR *Mukainada* (向洋) Station (JR Sanyo or JR Kure Line).

≪ Higashi Ward

#9 Ushita Japanese Language Class

PLACE: *Ushita Komin-kan*

(1-8-3 Ushita-shin-machi, Higashi-ku)

DATE & TIME: Every Wednesday, 1:30 pm – 3:30 pm

Classes will be closed during summer holiday season (late July to the end of August), New Year's holiday season and on closed days of *Ushita Komin-kan*.

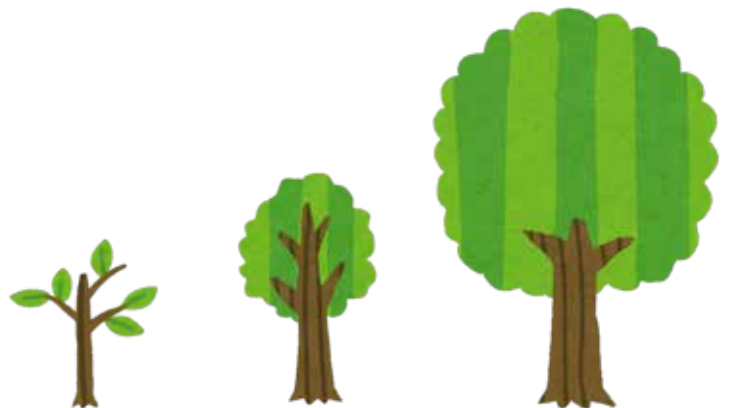
TUITION: Free

ENROLLMENT: Enroll any time you please

INQUIRIES: *Ushita Komin-kan* Tel. 082-227-0706

ACCESS: Get off at *Ushita* (牛田) Station

(Astramline). It is a 5 min. walk from there. It is located next to the Higashi Ward Sports Center.



≪ Nishi Ward

#10 Minami-kanon Japanese Language Volunteer Group

PLACE: *Minami-kanon Komin-kan*
(2-16-46 Kanon-shin-machi, Nishi-ku)
DATE & TIME: Every Saturday, 6:00 pm – 9:00 pm
TUITION: Free
ENROLLMENT: Enroll any time you please
INQUIRIES: *Minami-kanon Komin-kan*
Tel. 082-293-1220
ACCESS: Take the No. 3 bus bound for Hiroshima Heliport or Marina Hop and get off at *Kanon-shin-machi 3 cho-me* (観音新町 3 丁目) Stop. It is a 5 min. walk from there.

#11 Japanese Language Class Momiji

PLACE: *Furuta Komin-kan*
(19-15 Furue-nishi-machi, Nishi-ku)
DATE & TIME: Every Friday, 10:00 am – noon
TUITION: 100yen/month
ENROLLMENT: Enroll any time you please
INQUIRIES: *Furuta Komin-kan* Tel. 082-272-9001
ACCESS: It is a 5 min. walk from the *Furue* (古江) Streetcar Stop (Miyajima Line).

#12 Kusatsu Japanese Language Class

PLACE: *Kusatsu Komin-kan*
(2-20-7 Kusatsu-higashi, Nishi-ku)
DATE & TIME: Every Wednesday, 9:30 am – 12:30 pm
Every Saturday, 1:30 pm – 4:00 pm
TUITION: Free
ENROLLMENT: Enroll any time you please
INQUIRIES: *Kusatsu Komin-kan* Tel. 082-271-2576
ACCESS: It is a 2 min. walk from the Kusatsu (草津) Streetcar Stop (Hiroden Miyajima Line).



≪ Asaminami Ward

#13 Gion Japanese Language Class

PLACE: *Gion Komin-kan*
(1-13-26 Nishihara, Asaminami-ku)
DATE & TIME: Every Friday, 10:30 am – 1:00 pm
Lesson schedule may change during school holiday seasons.
TUITION: Free
ENROLLMENT: Enroll any time you please
INQUIRIES: *Gion Komin-kan* Tel. 082-874-5181
ACCESS:
j It is a 5 min. walk from the JR *Shimo-gion* (下祇園) Station (JR Kabe Line).
k It is a 15 min. walk from the *Gion Shin-bashi-kita* (祇園新橋北) Station (*Astramline*).
l It is a 5 min. walk from the NHK *Housousyo-mae* bus stop.

#14 Yasu-higashi Japanese Language Class

PLACE: *Yasu-higashi Komin-kan*
(2-16-42 Yasu-higashi, Asaminami-ku)
DATE & TIME: Every Friday, 6:00 pm – 7:30 pm
Because classes are held on a semester system, there are times when classes will not be held.
TUITION: Free
ENROLLMENT: Enroll whenever you please (during the term only)
Inquire at the *Yasu-higashi Komin-kan* for more information including the term schedule.
INQUIRIES: *Yasu-higashi Komin-kan*
Tel. 082-878-7683
ACCESS: It is a 5 min. walk from *Yasu-higashi* (安東) Station (*Astramline*).

#15 Sato Japanese Language Class

PLACE: *Sato Komin-kan* (6-29-25 Midorii, Asaminami-ku)
DATE & TIME: Every Wednesday, 9:30 am – 12:30 pm
TUITION: Free
ENROLLMENT: Enroll any time you please
INQUIRIES: *Sato Komin-kan* Tel. 082-877-5200
ACCESS: It is a 3 min. walk from the *Shichiken-jaya* (七軒茶屋) Station (JR Kabe Line).

#16 Numata Japanese Language ClassPLACE: *Numata Komin-kan*

(7-64-8 Tomohigashi, Asaminami-ku)

DATE & TIME: Every Saturday, 1:00 pm – 4:00 pm

TUITION: Free

ENROLLMENT: Enroll any time you please

A lesson observation is required in advance.

Inquire at the *Numata Komin-kan*.INQUIRIES: *Numata Komin-kan* Tel. 082-848-0242ACCESS: It is a 5 min. walk from the *Obara (大原)* Station (*Astramline*).

≪ Asakita Ward

#17 Magame Japanese Language ClassPLACE: *Magame Komin-kan*

(1-3-27 Magame, Asakita-ku)

DATE & TIME: Every Sunday, 10:00 am – noon

Classes will be closed during New Year's holiday season.

TUITION: Free

ENROLLMENT: Enroll any time you please

INQUIRIES: *Magame Komin-kan* Tel. 082-842-8223ACCESS: Take a bus bound for *Obayashi Shako (大林車庫)* via *Koyo A Danchi (高陽A団地)* and get off at *Terasako Koen (寺迫公園)*. It is a 1 min. walk from there.**#18 Kameyama****Japanese Language Class Amigo**PLACE: *Kameyama Komin-kan*

(3-16-16 Kameyama-minami, Asakita-ku)

DATE & TIME: Every Sunday, 10:00 am – 12:30 pm

TUITION: Free

ENROLLMENT: Enroll any time you please

INQUIRIES: *Kameyama Komin-kan*

Tel. 082-815-1830

ACCESS: Take a bus bound for *Katsuki (勝木)* via *Nijiyama Danchi (虹山団地)* and get off at *Nijiyama Danchi-shita (虹山団地下)*. It is a 5 min. walk from there.

≪ Aki Ward

#19 Nihongo ClubPLACE: *Funakoshi Komin-kan*

(5-22-23 Funakoshi, Aki-ku)

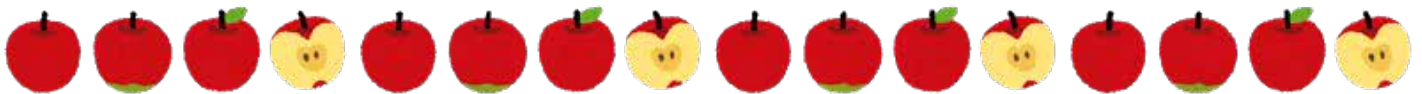
DATE & TIME: Every Saturday, 10:00 am – noon

TUITION: Free

ENROLLMENT: Enroll any time you please

INQUIRIES: *Funakoshi Komin-kan*

Tel. 082-823-4261

ACCESS: It is a 7 min. walk from the *JR Kaita-ichi (海田市)* Station (*JR Sanyo Line*).**INQUIRY: Hiroshima Peace Culture Foundation**

1-5 Nakajima-cho, Naka-ku, Hiroshima

730-0811

E-mail: internat@pcf.city.hiroshima.jp

Tel. 082-242-8879 Fax. 082-242-7452

○ Visit our website for information online. ○

URL: <http://www.pcf.city.hiroshima.jp/ircd/english/index.html>

図書だより

2018年5月

今月のおすすめ図書

涙の理由：人はなぜ涙を流すのか

重松 清 / 著、茂木 健一郎 / 著 (宝島社, 2014年)

ルネサンスの女たち

塩野 七生 / 著 (中央公論社, 1973年)

男が語る離婚：破局のあとさき

中国新聞文化部 / 編 (文藝春秋, 2003年)

探偵 ガリレオ

東野 圭吾 / 著 (文藝春秋, 2002年)

絵本 処方箋

落合 恵子 / 著 (朝日新聞出版, 2010年)

本のリクエストなど図書コーナーに関するご要望はスタッフまでお気軽にお申し出ください。

¥◎

図書コーナー

場 所：広島国際会議場 1F・国際交流ラウンジ (平和記念公園内)
TEL (082)247-9715

開館時間：9:00am - 7:00pm (4月1日から9月30日まで)
9:00am - 6:00pm (10月1日から3月31日まで)

休館日：12月29日～1月3日

貸出：図書は2週間を期限として、1回3冊まで借りることができます。

初めて利用する際には、住所や在留期間(外国人の方)を証明するもの(運転免許証・学生証・パスポート・在留カードなど)を提示してください。



Please feel free to contact the International Exchange Lounge at 082-247-9715.

E-mail: golounge@pcf.city.hiroshima.jp

May 2018

Free Back Issues of Newspapers & Magazines

世界の新聞・雑誌の無料配布"

Back issues of the listed newspapers and magazines, which were issued between November 2016 and April 2017 will be given for free to anyone who wants them during the following period:

国際交流ラウンジにて購読している世界の新聞・雑誌のうち、保存期間を過ぎた 平成 28 年(2016 年)11 月から平成 29 年(2017 年)4 月 発行分を市民の皆様^に無料で配布します。

PERIOD: Sunday, May 13 – Sunday, May 27, 2018
 PLACE: International Conference Center Hiroshima
 1F, International Exchange Lounge
 HOURS: 9:00 am – 7:00 pm

期間:平成 30 年 5 月 13 日(日)~5 月 27 日(日)
 場所:広島国際会議場 1 階 国際交流ラウンジ
 開館時間: 9:00 ~ 19:00

Please come and help yourself. (Up to 10 newspapers & 5 magazines per person)

N This is on first-come, first-served basis.

ご希望のものをお持ち帰りください。ただし、お一人様新聞 10 部・雑誌 5 部までとさせていただきます。

N なくなり次第終了いたします。

NEWSPAPERS The Japan Times (Japan / English), The Japan Times ST (Japan / English), The International New York Times (Japan / English), Dong-a Ilbo (Korea / Korean), People's Daily Overseas Edition (China / Chinese), Suara Pembaruan (Indonesia / Indonesian), Thai Rath (Thailand / Thai), Excelsior (Mexico / Spanish), Slovo (Russia / Russian), The Guardian Weekly (UK / English), Frankfurter Allgemeine Sonntagszeitung (Germany / German), Le Monde Selection (France / French), The New York Times Weekly Review (US/ English), The Weekend Australian (Australia / English) & others

MAGAZINES Hiragana Times (Japan / Japanese & English), Newsweek Japan (Japan / Japanese), AERA (Japan / Japanese), English Journal (Japan / Japanese & English), Sotokoto (Japan / Japanese), Discover Japan (Japan / Japanese), Philippine Digest (Japan / English & Tagalog), 知音 (China / Chinese), 読者 (China / Chinese), 光華/Sinorama (Taiwan / Chinese), 争鳴/Cheng Ming (Hong Kong / Chinese), Shukan Chosen (Korea / Korean), Dewan Masyarakat (Malaysia / Malay), Gatra (Indonesia / Indonesian), Tuoi Tre Cuoi Tuan (Vietnam / Vietnamese), India Today (India / English), The Economist (UK / English), New African (UK / English), Der Spiegel (Germany / German), L'Express (France / French), L'Espresso (Italy / Italian), AD Italian Edition (Italy / Italian), People (US / English), National Geographic Traveler (US / English), Time (US / English), The New Yorker (US / English), Rolling Stone (US / English), Glamour (US / English), Esquire US Edition (US/ English), Maclean's (Canada / English), Veja (Brazil / Portuguese), Caras (Brazil / Portuguese), People En Espanol (US / Spanish), & others

新聞 The Japan Times (日本/英語), The Japan Times ST (日本/英語), The International New York Times (日本/英語), 東亜日報 (韓国/ハングル), 人民日報 (中国/中国語), Suara Pembaruan (インドネシア/インドネシア語), Thai Rath (タイ/タイ語), Excelsior (メキシコ/スペイン語), Slovo (ロシア/ロシア語), The Guardian Weekly (イギリス/英語), Le Monde Selection (フランス/仏語), Frankfurter Allgemeine Sonntagszeitung (ドイツ/独語), The New York Times Weekly Review (アメリカ/英語), The Weekend Australian (オーストラリア/英語), その他

雑誌 Hiragana Times (日本/日本語・英語), ニュースウィーク (日本/日本語), AERA (日本/日本語), CUT (日本/日本語), ソトコト (日本/日本語), English Journal (日本/日本語・英語), Discover Japan (日本/日本語), Philippine Digest (日本/英語・タガログ語), 知音 (中国/中国語), 読者 (中国/中国語), 光華 (台湾/中国語), 争鳴 (香港/中国語), Shukan Chosen (韓国/ハングル), Dewan Masyarakat (マレーシア/マレー語), Gatra (インドネシア/インドネシア語), India Today (インド/英語), The Economist (イギリス/英語), New African (イギリス/英語), Der Spiegel (ドイツ/独語), L'Express (フランス/仏語), L'Espresso (イタリア/イタリア語), AD Italian Edition (イタリア/イタリア語), Glamour (アメリカ/英語), People (アメリカ/英語), National Geographic Traveler (アメリカ/英語), Time (アメリカ/英語), The New Yorker (アメリカ/英語), Rolling Stone (アメリカ/英語), Maclean's (カナダ/英語), Veja (ブラジル/ポルトガル語), Caras (ブラジル/ポルトガル語), People En Espanol (アメリカ/スペイン語), その他

Please feel free to contact the International Exchange Lounge at 082-247-9715.

E-mail: golounge@pcf.city.hiroshima.jp

May 2018

Assisting with International Cooperation with Used Stamps & PET Bottle Caps

The International Exchange Lounge collects used stamps to assist international cooperation activities. Through the volunteer groups, JOCS*, the collected stamps are sold to collectors to raise money. With the profit, items such as milk and medicine are purchased and doctors as well as nurses are dispatched throughout Asia and other continents. We also collect PET bottle caps in order to support the "Ecocap Action". The sales profits obtained by recycling caps are donated to the Japan Committee "Vaccines for the World's Children" (JCV).

*JOCS: Japan Overseas Christian Medical Cooperative Service

HOW TO COLLECT:

- © **Stamps** ☪ When you cut stamps from envelopes, please leave 5 mm of paper around them. It is not necessary to remove them from the envelope. Torn or folded stamps cannot be accepted.
- © **PET Bottle Caps** ☪ Only PET bottle caps for drinks or mineral water are accepted. Please wash the caps and tear off the sticker if it has one. This is in order to avoid damaging the recycling machines. Things such as metal caps and pull-top tabs cannot be accepted.

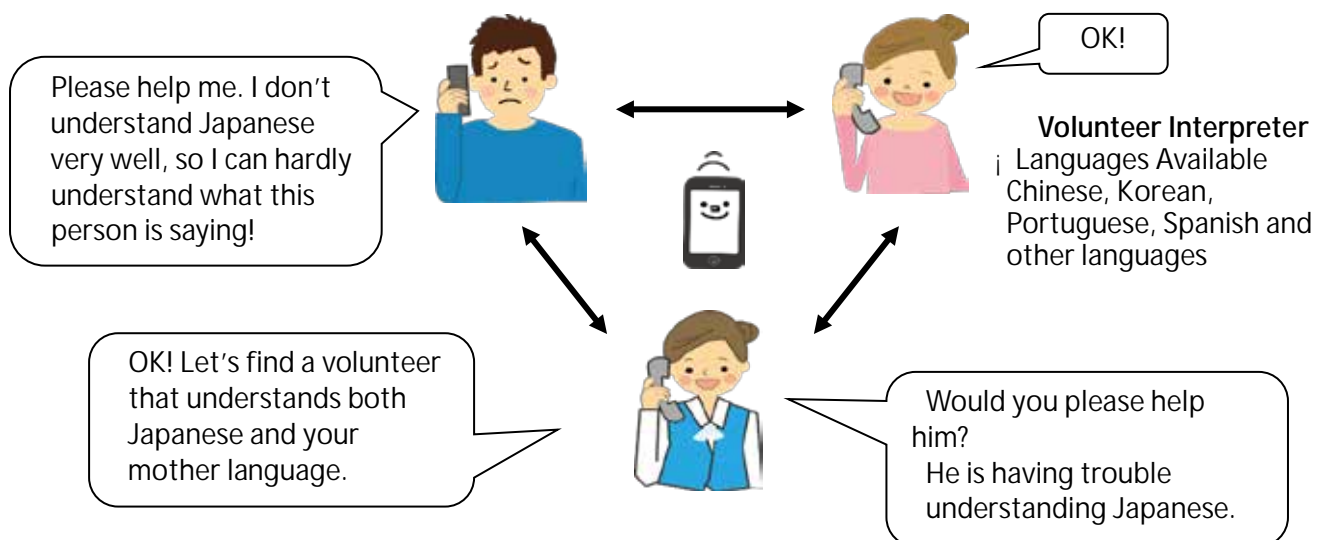
Trio-Phone Service (Multilingual Interpretation over the Telephone)



What is Trio-Phone ?

Trio-Phone Service allows three people to have a conversation at the same time through the telephone. If you are having difficulties communicating in Japanese, call the International Exchange Lounge (082-247-9715).

A volunteer interpreter will help you through the Trio-Phone Service!



For further information, please ask the staff at the International Exchange Lounge.

Please feel free to contact the International Exchange Lounge at 082-247-9715.

E-mail: golounge@pcf.city.hiroshima.jp

Garbage Disposal Information

Separate garbage properly and take it to the collection site by 8:30am on the designated day. Please do NOT take garbage to the site on the night before. Garbage collection days vary depending on where you live and the category of the refuse. For further details, consult your local ward office or your neighbors to be sure of the proper disposal method. "Hiroshima 8", a handbook on how to separate garbage, and "Hiroshima City Garbage Disposal Guidelines for the 2017 fiscal year", a garbage chart with schedules of garbage collection days, are available at ward offices, branch offices and community halls. The Handbook and Guidelines are translated into English, Spanish, Portuguese, Chinese and Korean. These are also available at the International Exchange Lounge (International Conference Center Hiroshima), so please ask the staff if you need them.

HIRO CLUB NEWS is published monthly and provides essential and entertaining information about life in Hiroshima City. It is available in print at the International Exchange Lounge, and online at our website: <http://www.pcf.city.hiroshima.jp/ircd/english/hiroclubnews/> Selected information is also available in other languages including Chinese, Portuguese and Spanish.

HIRO CLUB NEWS は広島的生活情報やイベント等の情報を掲載している月刊情報誌です。国際交流ラウンジにて配布しています。当課ホームページ(<http://www.pcf.city.hiroshima.jp/ircd/english/hiroclubnews/>)にも掲載しています。英語版の情報の一部を抜粋した中国語・ポルトガル語・スペイン語版も作成しています。

* * * * *

Edited and published by the Hiroshima Peace Culture Foundation
International Affairs Department, International Relations and Cooperation Division
Tel: (082) 242-8879, Fax: (082) 242-7452, E-mail: internat@pcf.city.hiroshima.jp
International Exchange Lounge
Tel: (082) 247-9715, E-mail: golounge@pcf.city.hiroshima.jp
Website: <http://www.pcf.city.hiroshima.jp/ircd/english/>

編集・発行 公益財団法人広島平和文化センター国際部国際交流・協力課 国際交流ラウンジ
〒730-0811 広島市中区中島町1番5号