

Seasonal Event Information

July 2018

Ⓔ Event schedules are subject to change. Please contact event organizers before you go.

Events Held in Hiroshima City

Wednesdays between April 4 and December 26, 2018

✓ July 4, 11, 18 & 25; August 1, 8, 15, 22 & 29

Hiroshima Kagura ひろしまけんみんぶんか 広島県民文化センター「ひろしまがくら 広島神楽」ていきこうえん 定期公演

TIME: 7:00 pm – 8:45 pm (The venue will open at 6:00 pm.)

PLACE: Hiroshima Kenmin Bunka Center, Ote-machi, Naka-ku (located near Hondori Shopping Street)

ACCESS: From Kamiya-cho-nishi or Hondori Streetcar Stops, walking time to destination is 3 minutes.

TICKETS: ¥1,000 ² All non-reserved seats

² Tickets will be sold from 5:00 pm on the day of performance at the center.
There are no advance tickets.

INQUIRIES: Hiroshima Kenmin Bunka Center 082-245-2311



Sunday, June 10 – Saturday, July 7

Ajisai (Hydrangea) Festival at Kannon-ji Temple かんのんじ 観音寺 まつ あじさい祭り

TIME: 8:30 am – 5:00 pm { Ajisai Festival: From 10:00 am onward on June 10

PLACE: Kannon-ji Temple, Saeki-ku

ACCESS: Get on a bus bound for Higashi-kannondai Danchi from Rakurakuen Streetcar Stop or JR Itsukaichi Station (JR Sanyo Line) and get off at Kannondai Iriguchi. Walking time to destination is 5 minutes.

INQUIRIES: Kannon-ji Temple 082-924-1340

© 5,000 hydrangeas of 400 varieties will bloom from the middle of June to the beginning of July at Kannon-ji Temple.

© On June 10, there will be an opening to public of *nehanzu* (a picture of Buddha entering Nirvana).
On June 17, "Food, Music and Miscellaneous Goods Market" will be held from 10 am to 3 pm.
Ajisai Exhibition and *Furin*, a wind-bell festival will also be held during the event period.

Sunday, July 1 & 15

Hiroshima Minato Marché ひろしまみなとマルシェ

TIME: 8:00 am – 2:00 pm

PLACE: Open Space between East and West Terminal of Hiroshima Port, Minami-ku

ACCESS: Take the No. 1, 3 or 5 streetcar bound for Hiroshima Port and get off at the last stop, Hiroshima Port.

INQUIRIES: Hiroshima Minato Marché Office 082-255-6646

© You can buy and taste locally-grown fresh vegetables and other food products at the market.

Sunday, July 8

Tanabata (star festival) Tea Ceremony たなばたちやかい 七夕茶会

TIME: 9:00 am – 2:00 pm

PLACE: Shukkeien Garden

ACCESS: From Shukkeien-mae Streetcar Stop (Hiroden Hakushima Line), walking time to destination is 5 minutes.

Please feel free to contact the International Exchange Lounge at 082-247-9715.

E-mail: golounge@pcf.city.hiroshima.jp

July 2018

FEE FOR THE TEA CEREMONY:¥800 at *Seifukan* / ¥700 in front of the Prefectural Museum² Admission fee for the garden is also required.

Adults-¥260, University & High school students-¥150
Junior high & Elementary school students- ¥100

INQUIRIES: Shukkeien Garden 082-221-3620© *Tanabata* is a star festival usually held on July 7 each year.**Thursday, July 19 – Wednesday, August 29****Pixar Adventure “What If”** ピクサーアドベンチャー「もしも」から はじ始まる、ぼうけん冒険のせかい
世界**TIME:** 10:00 am – 6:00 pm (entry allowed up to 5:30 pm.)**PLACE:** NTT CRED Hall, Motomachi CRED Pacela 11F, Motomachi, Naka-ku**ACCESS:** • Get off at the *Astramline* Kencho-mae Station.

, Get off at Kamiya-cho-higashi or Kamiya-cho-nishi Streetcar Stop.

TICKETS: w Advance: Junior high school students and above-¥1,000

4 years old – Elementary school students-¥500

w At the door: Junior high school students and above-¥1,200

4 years old – Elementary school students-¥600

² Admission free for children who are 3 years old and under² Children under elementary school student age should be accompanied by a guardian.**INQUIRIES:** TSS Office 082-253-1010 (weekdays, 10 am – 6 pm)**Saturday, July 21 – Sunday, September 2****Amphibian & Reptile Exhibition: Wonderful World of Frogs, Snakes and Lizards**せかいカエルとヘビ・トカゲのふしぎな りょうせいの世界 ちゅうるいてん両生類・は虫類展**TIME:** 11:00 am – 6:00 pm (entry allowed up to 5:30 pm.)**PLACE:** Hiroshima Marina Hop, Mermaid Space, Kanon-shin-machi, Nishi-ku**ACCESS:** Take the No. 3 (from JR Hiroshima Station) or the No. 8 (from JR Yokogawa Station) bus bound for Kanon Marina Hop / Hiroshima Heliport and get off at the last stop, Kanon Marina Hop.**TICKETS:** w Advance: 18 years old and above: ¥800

6 years old – 17 years old: ¥600

3 years old – 5 years old: ¥400

w At the door: 18 years old and above: ¥1,000

6 years old – 17 years old: ¥800

3 years old – 5 years old: ¥600

² Admission free for children who are 2 years old and under² Advance tickets are sold at convenience stores (Seven-Eleven, Lawson and FamilyMart), EDION Hiroshima (SUNMALL, 1F), Fukuya Department Store (Hiroshima Station) and Alpark Tenmaya.**INQUIRIES:** TSS Office 082-253-1010 (weekdays, 10 am – 6 pm)**Thursday, July 26 & Friday, July 27****Sumiyoshisan Festival** すみよしさん**TIME:** No specific starting time. Most people come in the evening.**PLACE:** Sumiyoshi Shrine, Sumiyoshi-cho, Naka-ku**ACCESS:** j Take the No. 24 bus and get off at Sumiyoshi-cho. Walking time to destination is 5 minutes.

k Take the No. 3 or 6 bus and get off at Kako-machi. Walking time to destination is 3 minutes.

INQUIRIES: Sumiyoshi Shrine 082-241-0104

Please feel free to contact the International Exchange Lounge at 082-247-9715.

E-mail: golounge@pcf.city.hiroshima.jp

July 2018

© Fireworks will be set off from 8:00 pm on both days. An ancient-style of boat will be in the river and *kagura* performances will also be held.

Saturday, July 28

2018 Hiroshima *Minato* Fireworks Festival ひろしま 2018広島 ゆめ はなびたいかい みなと 夢 花火大会

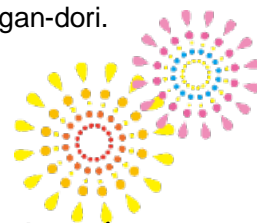
TIME: 8:00 pm – 9:00 pm ® Opening event: 7:00 pm – 7:40 pm

PLACE: Hiroshima Port 10,000 ton Class Berth, Minami-ku

ACCESS: Take a streetcar bound for Hiroshima-ko (Hiroden Ujina Line) and get off at Kaigan-dori. Walking time to destination is 15 minutes.

INQUIRIES: Hiroshima *Matsuri* Committee 082-554-1813 (weekdays, 9 am – 5:45 pm)

© The fireworks will be canceled or postponed if it rains heavily on the 28th.



Saturday, July 28

***Nagoshi* Festival at Nagatsuka Shrine & Taiko (traditional Japanese drums)**

Performance 2018 ながつかじんじやなごしさい 長東神社夏越祭 ほうのうこうえん 奉納公演 2018

TIME: ® Ritual: From 6:00 pm onward ® *Taiko* performance: From 7:00 pm onward

PLACE: Nagatsuka Shrine, Asaminami-ku

ACCESS: From Aki-nagatsuka Station (JR Kabe Line), walking time to destination is 10 minutes.

FEE: Free

INQUIRIES: *Taiko Honpo Kaburaya* 082-509-0320 HP: <http://kaburaya.net>

Wednesday, August 1

Memorial Service for the Atomic Bomb Victims at Shukkeien Garden

げんばくぎせいしやいれいくようしき
原爆犠牲者慰霊供養式

PLACE: Shukkeien Garden

ACCESS: From Shukkeien-mae Streetcar Stop, walking time to destination is 5 minutes.

FEE: Admission fee for the garden (Adults-¥260, University & High school students-¥150
Junior high & Elementary school students-¥100)

INQUIRIES: Shukkeien Garden 082-221-3620



Monday, August 6

The 73rd Peace Memorial Ceremony だい かいへいわきねんしきてん 第73回平和記念式典

TIME: 8:00 am – 8:45 am

PLACE: In front of the Cenotaph for the A-Bomb Victims, Peace Memorial Park

INQUIRIES: *Shimin Katsudo Suishin Ka* (Citizens Activities Promotion Division, the City of Hiroshima)
082-504-2103 E-mail: katsudo@city.hiroshima.lg.jp

© On August 6, at 8:15 am, at the sound of a bell rung by a representative from the bereaved families and one youth representative, a moment of silence is observed for the deceased. At that moment, factory sirens as well as temple and church bells are rung throughout the city, and Hiroshima is deeply wrapped in prayer. The Mayor of Hiroshima delivers a peace declaration addressed to the whole world at the ceremony. On this day, people recall what happened on August 6, 1945, and in their prayers, ponder the meaning of peace.

✓ Now Accepting Seat Reservation from Non-Japanese Speakers for the 2018 Peace Memorial Ceremony

The International Relations Division of the City of Hiroshima is now accepting applications from non-Japanese speakers for seats and simultaneous interpretation receivers (English Only) for this year's Peace Memorial Ceremony.

<TO APPLY>

Please fill out a Reservation Form and List of Attendees, and send them back to the International Relations Division at kokusai@hiroshima.lg.jp. Please write the names of all participants on the

Please feel free to contact the International Exchange Lounge at 082-247-9715.

E-mail: golounge@pcf.city.hiroshima.jp

July 2018

Attendees sheet. You may use a second sheet if you need more space. The International Relations Division will contact you regarding whether or not your reservation request could be granted. You can download the reservation form and list of attendees from the Hiroshima City website (<http://www.city.hiroshima.lg.jp/www/contents/1469436635910/index.html>).

² Seats are limited. Once the seating quota has been reached, we will stop accepting applications. Last year we received an influx of applications. If you wish to be seated during the Ceremony, please apply early.

Seating is also available in the Unassigned Seating Area, however, as seating is open to anyone on a first come basis, you are encouraged to arrive early. Reservations are not being accepted for this seating area. In previous years, seats were mostly filled by 7:00 am. Please note that the International Conference Center Hiroshima, which is located in Peace Memorial Park, will be open to the public and will have live footage of the Ceremony in Phoenix Hall and Himawari Room.

Please see the Hiroshima City website (<http://www.city.hiroshima.lg.jp/www/contents/1469436635910/index.html>) or contact the International Relations Division of the City of Hiroshima (Tel: 082-504-2106 / e-mail: kokusai@city.hiroshima.lg.jp) for more information.

Monday, August 6

Floating Paper Lanterns ピースメッセージとうろうなが流し

TIME: 6:00 pm – 9:00 pm

PLACE: ̳ Chuo Area: South Side of the Atomic Bomb Dome

̳ Fukushima Area: South Side of the Shin-koi-bashi Bridge (east side)

̳ Koi Area: South Side of the Shin-koi-bashi Bridge (west side)

ACCESS: Get off at Genbaku Dome-mae Streetcar Stop.

INQUIRIES: *Toro-nagashi* Executive Committee 082-245-1448

© Paper lanterns will be floated down the river to console the souls of the deceased. Lanterns (¥600) will be sold at four places inside the Peace Memorial Park from 6 am to 9 pm on the day.

Friday, August 10 – Thursday, August 16

Tomica Land in Hiroshima トミカ博 in Hiroshima

TIME: 10:00 am – 4:00 pm ² Entry allowed up to 3:30 pm.

PLACE: *Hiroshima Kenritsu Hiroshima Sangyo Kaikan* (Hiroshima Prefectural Industrial Exhibition Hall), West Exhibition Hall, Hijiyama, Minami-ku

ACCESS: From Minami Kuyakusho-mae Streetcar Stop, walking time to destination is 1 minute.

TICKETS: w Advance: Junior high school students and above-¥900

3 years old – Elementary school students-¥700

w At the door: Junior high school students and above-¥1,000

3 years old – Elementary school students-¥800

² Advance “guardian and child” family tickets (one adult and one child) will be sold for ¥1,500 at Seven-Eleven between May 16 (from 10 am) and June 8 (until 11:59 pm).

² Admission free for children who are 2 years old and under

INQUIRIES: RCC Broadcasting 082-222-1133 (weekdays, 10 am – 5 pm)

© “Tomica” are die-cast toy mini-cars for children produced by a Japanese company, Takara Tomy.

Tomica has remained a long-selling product since it appeared for the first time in 1970.

Tomica Land is a special play land where you can enjoy the whole world of “Tomica”.



Please feel free to c

at 082-247-9715.

E-mail: goiounge@pcr.city.hiroshima.jp

July 2018



Thursday, August 23 – Monday, August 27

The 17th International Animation Festival Hiroshima 2018

だい かいひろしまこくさい
第17回 広島国際アニメーションフェスティバル

VENUE: JMS Aster Plaza, Kako-machi, Naka-ku

ACCESS: Take the No. 24 bus and get off at Kako-machi. Walking time to destination is 2 minutes.

TICKETS: J Free admission for elementary school students and under.

	Adults	¥1,000	¥1,200
One Program Ticket	University students	¥800	¥1,000
	Senior high & junior high school students	¥600	¥700
	Adults	¥2,500	¥3,000
One Day Pass	University students	¥2,000	¥2,400
	Senior high & junior high school students	¥1,500	¥1,800
	Adults	¥10,000	¥12,000
All Program Pass	University students	¥8,000	¥10,000
	Senior high & junior high school students	¥6,000	¥7,000
	Group Discount (Over 15 tickets)		10% discount

<NOTES>

- ² “University students” includes university (college) students, junior college students and special technical school students who are 18 years old and above.
- ² Elementary school students and under will be free of charge but should be accompanied by their guardians.
- ² Children who are 2 years old and under cannot enter the competition program.
- ² Advance tickets are available at major ticket offices in Hiroshima city:
 EDION Hiroshima (SUNMALL, 1F), Fukuya Department Store (Hiroshima Station Square Store), Alpark Tenmaya, Chuo Shoten Bookstore (inside SUNMALL), Hiroshima Yume Plaza, Movie Theaters (Hatchoza & Salon Cinema), JMS Aster Plaza, Kumin Bunka Centers (Ward Community Cultural Centers), Hiroshima-jo (Hiroshima Castle), Kyodo Shiryō Kan (Hiroshima City Museum of History and Traditional Crafts), 5-Days Kodomo Bunka Kagaku Kan (Children’s Museum of Culture and Science), Ebayama Kisho Kan (Hiroshima City Ebayama Museum of Meteorology), Eizo Bunka Library (Hiroshima City Cinematographic and Audio-Visual Library) & Hiroshima-shi Gendai Bijutsu Kan (Hiroshima City Museum of Contemporary Art)

INQUIRIES: International Animation Festival Organizing Committee (inside Aster Plaza)
 082-245-0245 URL: <http://hiroanim.org/>

Saturday, October 27

2018 Autumn Sumo Tour in Hiroshima (Ozumo Aki Basho)

おおずもうあきばしょ
大相撲安芸場所

TIME: 8:00 am – 3:00 pm

Please feel free to contact the International Exchange Lounge at 082-247-9715.

E-mail: golounge@pcf.city.hiroshima.jp

July 2018

VENUE: Hiroshima Green Arena, Naka-ku

ACCESS: From Kamiya-cho-nishi Streetcar Stop, walking time to destination is 3 minutes.

TICKETS:

1st Floor

i "Tamari" Seats (ringside)

S - ¥14,000/person A - ¥13,000/person B - ¥12,000/person

C - ¥11,000/person D - ¥10,000/person E - ¥9,000/person

4 people (6 E seats) - ¥48,000

i Chair Seats

F - ¥10,000/person G - ¥8,000/person H - ¥12,500/person I - ¥12,000/person

Wheelchair Seating: ¥19,000 (two seats)

2nd Floor

i Chair Seats

J - ¥8,000/person K - ¥7,000/person L - ¥5,000/person M - ¥3,000/person

Wheelchair Seating: ¥13,000 (two seats)

<Notice>

² Seats with " ": You can take a special sumo cushion home as a souvenir.

² Wheelchair seating is for those in a wheelchair and his/her attendant.

HOW TO ORDER TICKETS:

Ticket orders will be accepted online. Please see the website (<http://www.sumoaki-hiroshima.com/en>) for more information.

² You can order a *bento* (lunch box; ¥2,000) with tea as well.

² You may not be allowed to bring any food or drink to the venue other than this *bento*.

INQUIRIES: Ozumo Aki Basho Office 082-292-5559 (weekdays, 10 am – 5 pm)

E-mail: sumoaki@ppad.co.jp HP: <http://www.sumoaki-hiroshima.com/>

✓ **Official ticket distributor for non-Japanese speakers** ✓

JP Educational 082-224-3816 E-mail: info@jpeducational.com

Events Held on Miyajima

Until Friday, November 30

Zero Higashida Sculpture Exhibition ゼロ・ヒガシダ^{てん}展

TIME: 8:00 am – 5:00 pm

PLACE: Inside Daishoin Temple ground, Miyajima

ACCESS: Get off at JR Miyajima-guchi Station (JR Sanyo Line) or the Miyajima Streetcar Stop (Hiroden Streetcar Miyajima Line), then take a ferry to Miyajima.

INQUIRIES: Daishoin Temple 0829-44-0111



Friday, June 15

Festival Celebrating the Birth of Kobo-Daishi こうぼうだいしこうたん^{さい} 弘法大師降誕いろは祭

TIME: From 11:00 am onward

PLACE: Daishoin Temple, Miyajima

ACCESS: Get off at Miyajima-guchi Station (JR Sanyo Line) or get off at the Hiroden Miyajima Stop (Streetcar Miyajima Line), then take a ferry to Miyajima.

INQUIRIES: Daishoin Temple 0829-44-0111

© Kobo-Daishi (A.D. 774 – A.D. 835), also known as Kukai, is a famous Japanese monk, scholar and calligrapher. He is the founder of the Shingon sect of Buddhism.

© *Amacha* tea will be served.

Sunday, June 17

Itsukushima Benzaiten Festival いつくしまべんざいてんたいさい 厳島弁財天大祭

TIME: 10:00 am – 4:00 pm

PLACE: Daiganji Temple, Miyajima

Please feel free to contact the International Exchange Lounge at 082-247-9715.

E-mail: golounge@pcf.city.hiroshima.jp

July 2018

ACCESS: Get off at JR Miyajima-guchi Station (JR Sanyo Line) or the Miyajima Streetcar Stop (Hiroden Streetcar Miyajima Line), then take a ferry to Miyajima.

INQUIRIES: Daiganji Temple 0829-44-0179

© *Benzaiten* is the deity of water and music. Daiganji Temple's *Benzaiten* is one of the three major *Benzaiten* statues in Japan and is only open to the public once a year on this festival day.

Saturday, July 7

Seven Gods of Fortune Festival しちふくじんじゆふくさい 七福神授福祭

TIME: From 11:00 am onward

PLACE: Daishoin Temple, Miyajima

ACCESS: Get off at JR Miyajima-guchi Station (JR Sanyo Line) or the Miyajima Streetcar Stop (Hiroden Streetcar Miyajima Line), then take a ferry to Miyajima.

INQUIRIES: Daishoin Temple 0829-44-0111

© Buddhist music service in dedication to *Shichifukujin* (Seven Gods of Fortune) will be held.

Tuesday, July 17

Ichitate-sai いちたてさい 市立祭

TIME: From 9:00 am onward

PLACE: Itsukushima Shrine, Miyajima

ACCESS: Get off at JR Miyajima-guchi Station (JR Sanyo Line) or the Miyajima Streetcar Stop (Hiroden Streetcar Miyajima Line), then take a ferry to Miyajima.

FEE: Admission fee for Itsukushima Shrine

(Adults & University students-¥300 High school students-¥200
Junior high & Elementary school students-¥100)

INQUIRIES: Itsukushima Shrine 0829-44-2020

© After the ritual ceremony, *bugaku* (traditional Japanese imperial court dance music) will be performed.

Sunday, July 29

Miyajima Kangen-sai Festival かんげんさい 管絃祭

TIME: From 3:00 pm onward

PLACE: Itsukushima Shrine and other shrines on Miyajima

ACCESS: Get off at JR Miyajima-guchi Station (JR Sanyo Line) or the Miyajima Streetcar Stop (Hiroden Streetcar Miyajima Line), then take a ferry to Miyajima.

FEE: Admission fee for Itsukushima Shrine

(Adults & University students-¥300 High school students-¥200
Junior high school & Elementary school students-¥100)

INQUIRIES: Itsukushima Shrine 0829-44-2020

© The *Kangen-sai* Festival began in the Heian Era (A.D.794 – A.D.1185). *Kangen* is traditional Japanese music played with *San-kan* (three flutes), *San-ko* (three drums) and *San-gen* (three strings). The *Kangen-bune* boat cruises while musicians on-board play this unique music through Otorii Gate to the Jigozen Shrine located on the opposite bank. It then proceeds to Nagahama and Omoto Shrines on Miyajima Island and returns to Itsukushima Shrine. Itsukushima *Kangen-sai* Festival is one of the three largest boat festivals in Japan.

Sunday, July 29

Lantern Parade in Miyajima ぎょうれつ ちょうちん行列

TIME: From 8:00 pm onward

PLACE: Lanterns will be given out for free in front of Nagahama Shrine.

ACCESS: Get off at JR Miyajima-guchi Station (JR Sanyo Line) or the Miyajima Streetcar Stop (Hiroden

Please feel free to contact the International Exchange Lounge at 082-247-9715.

E-mail: golounge@pcf.city.hiroshima.jp

July 2018

Streetcar Miyajima Line), then take a ferry to Miyajima.

INQUIRIES: *Miyajima Kanko Kyokai* (Tourist Association) 0829-44-2011

© This parade uses lanterns to welcome the *Kangen-bune* boat to Nagahama Shrine on its return from Jigozen Shrine. After the boat reaches Nagahama Shrine, participants will parade towards Itsukushima Shrine.

Events Held Outside of Hiroshima City

Friday, June 1 – Monday, September 10

Cormorant Fishing in Miyoshi みよし うかい 三次の鵜飼

TIME: 7:30 pm – 8:30 pm (Excursion will be canceled if it rains heavily.)

² Please come to the reception by 7:00 pm.

PLACE: *Tokaichi Shinsui Koen* (Park), Miyoshi City

ACCESS: From JR Miyoshi Station (JR Geibi Line), walking time to destination is 15 minutes.

PASSENGER FARE:

® Sunday – Thursday: Junior high school students and above-¥3,000
Elementary school students-¥1,500

² Please note that passenger fares are different on Fridays and Saturdays, and reservations are required.

² Reservations will not be accepted on some event days (cormorant fishing festival in June and Miyoshi fireworks festival in August).

RESERVATIONS & INQUIRIES: *Miyoshi City Kanko Kyokai* (Tourist Association)
0824-63-9268

© Fishermen start out at night with lanterns and cormorants on small wooden boats. The birds are trained to catch *Ayu* (sweetfish). Very unique white-colored cormorants (a type of water fowl, usually with black feathers) were donated by Yaan in Szechuan, China, Miyoshi's friendship city, and can be seen only in Miyoshi.

Saturday, July 7

Takehara Tanabata Festival (Star Festival) たなばた たけはら七夕まつり

TIME: 5:00 pm – 9:00 pm

PLACE: Around the shopping street in front of JR Takehara Station, Takehara City

ACCESS: Get off at JR Takehara Station (JR Kure Line).

INQUIRIES: *Takehara Ekimae Shotengai Shinko Kumiai* 0846-22-5542

© *Tanabata* is a star festival usually held on July 7 every year. Stage performances, food kiosks, etc. will be held.



Saturday, July 7

Otebi Festival てびしんじ お手火神事

TIME: From 8:00 pm onward

PLACE: Nunakuma Shrine, Tomo-cho, Fukuyama City

ACCESS: Take a bus from JR Fukuyama Station (JR Sanyo Line) and get off at Tomonoura. Walking time to destination is 10 minutes.

INQUIRIES: Nunakuma Shrine 084-982-2050

© *Otebi* is a fire festival in which men carry three torches weighing about 150kg and offer them to the shrine. This is a traditional festival which has been held since the Kamakura Period (A.D. 1185 – A.D. 1393). This is designated as a Fukuyama City intangible folklore cultural asset.

Please feel free to contact the International Exchange Lounge at 082-247-9715.

E-mail: golounge@pcf.city.hiroshima.jp

July 2018

Sunday, July 8**Innoshima Suigun Festival / Island Festival**いんのしますいぐん しま
因島 水軍まつり・島まつり**TIME:** 9:00 am – 1:00 pm (tentative)**PLACE:** *Innoshima Amenity Koen* (park), *Shimanami Beach* and *Innoshima Suigun Castle*, Innoshima, Onomichi City**ACCESS:** Take a bus bound for Habu-ko (Habu Port) from JR Onomichi Station (JR Sanyo Line) and get off at Innoshima Ohashi. Walking time to destination is 10 minutes.**CONTENT:** *Shima-matsuri* (island festival) parade, dance and *taiko* performances, etc.**INQUIRIES:** Innoshima *Suigun* Festival Executive Committee 0845-26-6212© Innoshima was one of the fortified trading posts of the Murakami *Suigun* which did trade with Asian countries and held power over the sea around Japan between the Muromachi Era (A.D. 1336 – A.D. 1573) and the Age of The Provincial Wars.Innoshima *Suigun* Festival consists of three festivals; *Shima-matsuri* (Island Festival) on July 8, *Umi-matsuri* (Sea Festival) on August 26 and *Hi-matsuri* (Fire Festival) on September 1.**Friday, July 13 – Sunday, July 15****Tenjin-sai Festival**てんじんさい
天神祭**TIME:** w July 13: From 5:00 pm onward w July 14: From 4:00 pm onward w July 15: From 2:00 pm onward**PLACE:** Misode Tenmangu Shrine, Onomichi City**ACCESS:** From Ropeway Sanroku Station, walking time to destination is 2 minutes.

N Ways to get to Ropeway Sanroku Station N

- From JR Onomichi Station (JR Sanyo Line), walking time to destination is 15 minutes.
- Take a bus from JR Onomichi Station and get off at Nagae-guchi.

INQUIRIES: Misode Tenmangu Shrine 0848-37-1889© This is Misode Tenmangu Shrine's summer festival. People carrying *mikoshi*, a portable *shinto* shrine, will go up and down the 55 steps to the shrine.**Friday, July 13 – Sunday, July 15****Gion Matsuri Festival at Susanoo Shrine**ぎおんまつり
祇園祭**SCHEDULE:** w July 13 – Pre-vent w July 14 & 15 – Main events (carrying *mikoshi*)**PLACE:** Susanoo Shrine, Fukuyama City**ACCESS:** From JR Kamidote Station (JR Fukuen Line), walking time to destination is 3 minutes.**INQUIRIES:** Susanoo Shrine 0847-51-2958**Saturday, July 14****The 11th Kurahashi Kentoshi-sen Festival**だい かい けんとうしせん
第11回 くらはし 遣唐使船まつり**TIME:** 4:00 pm – 9:00 pm ® Fireworks festival will be held from 8:15 pm.**PLACE:** Katsurahama Beach, Kurahashi-cho, Kure City**ACCESS:** Take a bus from JR Kure Station (JR Kure Line) and get off at Katsurahama Onsen Kan.**INQUIRIES:** *Kurahashi Shimin Center* 0823-53-1111© It is said that Katsurahama beach was one of the ports of call of *Kentoshi*, envoys to the Tang Court in China between the 7th and the 9th century.**Sunday, July 15****Tadanoumi Gion Festival & Mikoshi Parade**ただのうみぎおんまつり ぎょうじ
忠海 祇園祭 とみこし行事**TIME:** Highlight of the Event – around 3:00pm

Please feel free to contact the International Exchange Lounge at 082-247-9715.

E-mail: golounge@pcf.city.hiroshima.jp

July 2018

PLACE: Around JR Tadanoumi Station, Takehara City

ACCESS: Get off at JR Tadanoumi Station (JR Kure Line).

INQUIRIES: Tadanoumi Kaihatsu Yahata Shrine 0846-26-0859

© Men who have turned and will turn 20 years of age this year carry *mikoshi*, a portable shrine, and parade through the streets all day. The festival is designated as one of Hiroshima Prefecture's intangible folklore cultural assets.

Friday, July 20

Hatsuka-no-ichi Market はつか いち
廿日の市

TIME: 8:00 am – 11:30 am

PLACE: The Open Space in front of Hatsukaichi City Hall, Hatsukaichi City

ACCESS: From Hatsukaichi Shiyakusho-mae (Hiroden Streetcar Miyajima Line), walking time to destination is 5 minutes.

INQUIRIES: *Hatsukaichi Kanko Kyokai* (Tourist Association) 0829-31-5656

Saturday, July 21 & Sunday, July 22 N Applications for the competition have already been closed.

Kendama World Cup 2018 Hatsukaichi けん だま
玉ワールドカップ 2018 はつかいち
廿日市

PLACE: Hatsukaichi City Sports Center "Suncherry", Hatsukaichi City

ACCESS: From JR Miyauchi Kushido Station (JR Sanyo Line) or Hatsukaichi Shiyakusho-mae Streetcar Stop (Hiroden Miyajima Line), walking time to destination is 10 minutes.

ADMISSION FEE: Free

INQUIRIES: *Hatsukaichi City Kanko Kyokai* (Tourist Association) 0829-31-5656

Official HP: <https://www.gloken.net/jp/kwc/>



Saturday, July 21

Mizu Matsuri (Water Festival) み お ちよう みずまつ
水尾町の 水祭り

TIME: 5:00 pm – 9:00 pm

PLACE: Around Kumano Gongen Shrine and Mio-no-shoji, Onomichi City

ACCESS: From JR Onomichi Station (JR Sanyo Line), walking time to destination is 15 minutes.

INQUIRIES: *Mamoru Kai* (Imagawa Chaho) 0848-37-3766

© This is a festival handed down since the Edo Period (1603 –1868). The festival will be postponed until Sunday, July 22 if it rains heavily on the 21st.

Saturday, July 21

Kurose Fureai Summer Festival くろせ なつ
黒瀬ふれあい夏まつり

TIME: 4:00 pm – 9:00 pm

PLACE: Around *Kurose Shogai Gakushu Center*, Kurose-cho, Higashihiroshima City

ACCESS: j From JR Higashihiroshima Station (JR Sanyo Line), driving time to destination is 25 minutes. k Take a bus from JR Saijo Station (JR Sanyo Line) and get off at Naka Kurose. Walking time to destination is 5 minutes.

INQUIRIES: Executive Committee 0823-82-3075

© This will be postponed until Sunday, July 22 if it rains heavily on the 21st.

Saturday, July 21

Tadanoumi Tenjin Yo-ichi Summer Festival ただのうみてんじん よいち
忠海 天神 夜市

TIME: 5:00 pm – 9:00 pm

PLACE: In front of JR Tadanoumi Station, Takehara City

ACCESS: Get off at JR Tadanoumi Station (JR Kure Line).

Please feel free to contact the International Exchange Lounge at 082-247-9715.

E-mail: golounge@pcf.city.hiroshima.jp

July 2018

INQUIRIES: *Tadanoumi Hohoemi Town Shoten Kai* 0846-26-1325

© Traditional local performing arts, kiosks, etc.

Saturday, July 21 & Sunday, July 22

Takehara Sumiyoshi Festival たけはらすみよし **竹原住吉まつり**

PLACE: Sumiyoshi Shrine, Takehara City

ACCESS: From JR Takehara Station (JR Kure Line), walking time to destination is 10 minutes.

INQUIRIES: Executive Committee 0846-22-0298

© This is a traditional summer festival in Takehara City that has been observed since the Edo period.

Saturday, July 21 & Sunday, July 22

Bingo Kokufu Festival びんごこくふ **備後国府まつり**

PLACE: w Festival: Central area of Fuchu City w Fireworks festival: *Fuchu Gakuen Kita Ground*

ACCESS: From JR Fuchu Station (JR Fukuen Line), walking time to destination is 5 minutes.

INQUIRIES: Executive Committee 0847-45-0678

© A fireworks show will be held on the 22nd (7:30 pm – 9 pm).

© This will be postponed until July 28 and 29 if it rains heavily on the event days.

Saturday, July 28

Kure Fireworks Festival くれ なつ かいじょうはなびたいかい **呉の夏まつり「海上花火大会」**

TIME: 8:00 pm – 8:45 pm

PLACE: Kure Port, Kure City

ACCESS: From JR Kure Station (JR Kure Line), walking time to destination is 20 minutes.

INQUIRIES: *Kure Matsuri Kyokai* 0823-21-0151

© This will be canceled if it rains heavily on the 28th.



Saturday, July 28

Miyoshi Kinsai Festival みよし みよしのきんさいまつり **三次きんさい祭**

TIME: Parade will start from 5:00 pm onward.

PLACE: Around Miyoshi-machi and Tokaichi Chuo-dori Street, Miyoshi City

ACCESS: From JR Miyoshi Station (JR Geibi Line), walking time to destination is 5 – 10 minutes.

INQUIRIES: Executive Committee 0824-62-8868

Saturday, July 28

Kinoe Ju-shichi-ya-sai (Festival & Boat Race) & Fireworks Festival

じゅうしちやさい かいでんまきょうそう かいじょうはなびたいかい
きのえ 十七夜祭 (櫂伝馬競争)・海上花火大会

TIME: w *Ju-shichi-ya-sai* Festival: 9:00 am – 8:40 pm w Fireworks Festival: 8:00 pm – 8:40 pm

PLACE: *Ju-shichi-ya-sai* Festival – Kinoe Area and Kinoe Port, Osaki-kamijima-cho

Fireworks Festival – Around Kinoe Port, Osaki-kamijima-cho

ACCESS: Get off at JR Takehara Station (JR Kure Line) and go to the Takehara Port by bus or on foot.

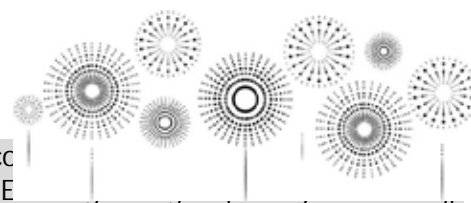
Then get on a ferry and get off at Tenma Port. Walking time to destination is 10 minutes.

² The 9:05 pm ferry departing from Tarumi Port is the last ferry to Takehara Port.

INQUIRIES: *Osaki-kamijima-cho Kanko Kyokai* (Tourist Association) 0846-65-3455

Please feel free to call

at 082-247-9715.



July 2018

Saturday, July 28**Onomichi Sumiyoshi Fireworks Festival** すみよしはなび **おのみち住吉花火まつり****TIME:** 7:30 pm – 9:00 pm ① Festival at Sumiyoshi Shrine will start from 2:00 pm onward.**PLACE:** *Onomichi Suido*, Onomichi City**ACCESS:** From JR Onomichi Station (JR Sanyo Line), walking time to destination is 15 minutes.**INQUIRIES:** *Onomichi Sumiyoshi Kai* 0848-22-2165© The fireworks will be postponed until July 29 (Sun.) or 30 (Mon.) if it rains heavily on the 28th.**Events Held in Yamaguchi Prefecture****Friday, June 1 – Monday, September 10****Cormorant Fishing in Iwakuni** きんたいきょう うかい **錦帯橋の鵜飼****TIME:** 7:00 pm – 9:00 pm**PLACE:** Nishiki-gawa River & Kintaikyo Bridge, Iwakuni City**ACCESS:** Get off at JR Iwakuni Station (JR Sanyo Line) and take a bus bound for Kintaikyo Bridge. Get off at Kintaikyo (a 20 min. bus ride).**PASSENGER FARE:** Adults-¥2,000 Children-¥1,000² The fare will be temporarily changed on August 4, the day of the fireworks festival.**RESERVATIONS & INQUIRIES:** *Iwakuni City Kanko Kyokai* (Tourist Association) & *Ukai Office* 0827-28-2877

© Originating about 400 years ago, cormorant fishing under lit lanterns is a summer tradition in Iwakuni.

Saturday, July 21**Iwakuni Minato-matsuri Fireworks Festival** いわくにこう まつりはなびたいかい **岩国港みなと祭花火大会****TIME:** 8:00 pm – 9:00 pm**PLACE:** Around *Iwakuni-ko* Port Building, Iwakuni City**ACCESS:** Take a bus bound for Otake from JR Iwakuni Station (JR Sanyo Line) and get off at Shin-minato.**INQUIRIES:** Executive Committee 0827-23-1055© The fireworks will be postponed until Sunday, July 22 if it rains heavily on the 21st.**Saturday, August 4****Nishiki-gawa River Water Festival** にしきがわみず さいてん **錦川水の祭典****TIME:** ① Festival: 9:00 am – 9:30 pm

② Fireworks Festival: 8:00 pm – 9:30 pm

PLACE: Around Kintaikyo Bridge, Iwakuni City**ACCESS:** Take a bus bound for Kintaikyo Bridge from JR Iwakuni Station (JR Sanyo Line) and get off at Kintaikyo (a 20 min. bus ride). ² Extra buses will run from the station on the event day.**INQUIRIES:** *Iwakuni City Kanko Kyokai* (Tourist Association) 0827-41-2037 (8:30 am – 5:15 pm)© The fireworks will be postponed until Saturday, August 25 if it rains on the 4th.© An *Iwakuni taiko* (traditional Japanese drums) performance will also be held in the evening.

Please feel free to contact the Exchange Lounge at 082-247-9715.
E-mail: hiroshima.jp

July 2018