

HIRO
CLUB
NEWS

Doyo no Ushi no Hi “The Day for Eating Eel”: 土用の丑の日

Doyo is the 18 days leading up to the first day of each season (*risshun*, *rikka*, *risshū* and *rittō*) according to the lunar calendar. The twelve animals of the zodiac that Japan adopted from China were used to designate the days of the month, so one or two ox days (*ushi no hi*) occur during the *doyo* period. The *doyo* period occurs four times a year, however, when we say *doyo no ushi no hi*, it usually means the midsummer Day of the Ox. On this day, we customarily eat *unagi* (eel) to get stamina and overcome summer fatigue.

Although there are several stories about the origin of this custom, according to one popular story, it is said that Gennai Hiraga (1728-1788) who was a scholar, doctor and artist in the Edo Period (1603-1686) came up with the idea. In the story, an *unagi* shopkeeper came to Hiraga to seek an idea about how to sell *unagi* which did not sold very well in summer. Hiraga suggested to putting up a notice saying, “Today is *Doyo no Ushi no Hi*, the day for eating eel.” in front of the shop. As a result, business at the *unagi* shop boomed. Consequently, other shops also began to sell *unagi* in the same way during the summer, which led to this custom becoming popular.

The most popular way to eat *unagi* is ‘*una-ju*’ (*unagi-no-kabayaki*, grilled eel with a thick sweet sauce served over rice). This year’s *doyo no ushi no hi* in midsummer is July 20 & August 1. There are two days this year, but most people eat *unagi* on the first day of ox (July 20). Let’s get through this hot summer by eating eel!

July 2018

JULY 2018

☀ City Office Notices

☀ HPCF News

☀ Movie Theaters

☀ Bilingual TV Programs

☀ Concerts & Plays

☀ Museums

☀ Sports

- Hiroshima Toyo Carp Schedule 2018
- Sanfrecce Hiroshima FC Game Schedule 2018

☀ Events

- Seasonal Event Information
- Municipal Facilities

☀ Lounge & Library

- Library News
- Trio-phone Service (multilingual interpretation using the telephone)
- Garbage Disposal

Hiroshima Peace Culture Foundation International Exchange Lounge

1-5 Nakajima-cho, Naka-ku, Hiroshima 730-0811

E-mail: golounge@pcf.city.hiroshima.jp

Tel. 082-247-9715 Fax. 082-242-7452

★ Visit the HIRO CLUB NEWS WEBSITE for information online. ★

URL: <http://www.pcf.city.hiroshima.jp/ircd/joho/hiroclub%2001.html>

City Office Notices

City Office Notices contains selected information from the Hiroshima City Newsletter, *ひろしま市民と市政 Hiroshima Shimin to Shisei*. City Office Notices is published twice a month and available in print at the International Exchange Lounge, and online at our website: <http://www.pcf.city.hiroshima.jp/ircd/english/hiroclubnews/>

July 1, 2018

Topics

- ☀ Chuo Park Family Pool Open from July 1
- ☀ Subsidy for Private Kindergarten Fees
- ☀ Subsidy for International Exchange/Cooperation Activities
- ☀ Seminar on Hiroshima
- ☀ Seeking Volunteers for the Peace Memorial Ceremony on August 6
- ☀ Save Energy at Home to Stop Global Warming

Chuo Park Family Pool Open from July 1

中央公園ファミリープール 7月1日利用開始(P5)

PERIOD: Until Sunday, September 2

OPEN HOURS: 9:00 am – 6:00 pm (Last admissions: 5:00 pm)

ADMISSION FEE: Adults: 780 yen

65 and older/Students/Children (senior high school age and younger): 340 yen*

*You will be required to show your ID to prove your age.

INQUIRIES: *Midori Ikimono Kyokai*, Tel. 211-0063, Fax. 228-1891

Subsidy for Private Kindergarten Fees

私立幼稚園就園奨励費を支給します(P5)

ELIGIBILITY: Those who have a child attending private kindergarten*. There are further conditions that are required to be met, including those regarding income.

*Except for kindergartens implementing the Comprehensive Support System for Children and Child-rearing

TO APPLY: Apply at the private kindergarten in which the child is enrolled before Friday, July 6. Application forms are available at the kindergarten.

INQUIRIES: *Kyoiku linkai Gakuji Ka* (Municipal Board of Education),
Tel. 504-2469, Fax. 504-2509
Or kindergartens

Subsidy for International Exchange/Cooperation Activities

国際交流・協力活動を助成(P5)

WHO: Groups that will hold international exchange/cooperation activities between October 2018 and March 2019. An applicant screening will be held. Before applying, please consult the Division.

SUBSIDY:

Subsidy for	Who	Amount
1. Promoting international exchange/cooperation activities	Groups started more than 2 years ago	Activities in Hiroshima City: up to 150,000 yen Activities in other countries: up to 400,000 yen Activities in sister/friendship cities: up to 400,000 yen
2. Start-up international exchange/cooperation activities	Groups started less than 2 years ago	Up to 100,000 yen

APPLICATION: Submit a prescribed application by Tuesday, July 31 to the Hiroshima Peace Culture Foundation, International Relations and Cooperation Division. Applications will go through a selection process. The application forms are available at the division and online at the division's official website <http://www.pcf.city.hiroshima.jp/ircd/>

INQUIRIES: Hiroshima Peace Culture Foundation,
International Relations and Cooperation Division, Tel. 242-8879, Fax. 242-7452

Seminar on Hiroshima

英語で伝えようヒロシマセミナー(P4)

In this seminar, attendees will learn the knowledge and expressions needed to explain the realities of the devastation caused by the atomic bombing in English.

DATE & TIME: Basic Seminar: Saturday, July 14, 1:00 pm – 3:00 pm

Advanced Seminar: Saturday, July 21, 1:00 pm – 3:30 pm

PLACE: Hiroshima Peace Memorial Museum, The East Building (1-2 Nakajima-cho, Naka-ku)

TO APPLY: Call (242-7828) or send a fax (247-2464) to Hiroshima Peace Memorial Museum.

Seeking Volunteers for the Peace Memorial Ceremony on August 6

平和記念式典ボランティア募集(P5)

WHO: Those between 15 and 30 years old (Junior high school students are not eligible)

DATE & TIME: Monday, August 6, 6:30 am – 10:30 am

ACTIVITIES: (1) Serving hand towels (2) Guiding attendees to the ceremony

APPLICATION: Contact the *Gion Komin-kan* (Community Hall)

The first 100 people for (1) and 50 people for (2) will be accepted.

INQUIRIES: *Gion Komin-kan*, Tel. 874-5181, Fax. 874-5182 (Closed on Tuesdays and July 16)

Explanatory Meeting for Volunteers

DATE & TIME: Wednesday, August 1 or Thursday, August 2 7:00 pm – 9:00 pm
Applicants are required to attend one of these dates.

PLACE: *Kokusai Seinen Kaikan* (International Youth House)
(4-17 Kako-machi, Naka-ku)

Save Energy at Home to Stop Global Warming

無理なく夏季の節電を (P3)

Here are easy ways to save energy inside your home. It is important to take care of yourself to prevent heatstroke caused by limited use of air-conditioning.

Tips to save energy at home in the heat of the summer:

- ÿ Ventilation is an efficient way to help your house cooler. Open all the windows to remove the built up heat from your home when you get home. You can also open exterior doors and use mosquito screen doors.
- ÿ Use blinds, exterior shades, window films or other materials to block out the sunlight.
- ÿ The room temperature should be around 28 °C, but you should adjust the temperature based on your physical condition.
- ÿ Use an electric fan when the air conditioner is running to circulate cold air around the room.
- ÿ Clean your air filter every two weeks.

Replace with LED lights and save energy:

Why don't you switch your old lights to LED lights which are energy efficient?

You can reduce electricity costs and save approx. 2,500 yen per year if you replace your old fluorescent lights with LED lights. (Depending on the circumstances.)

COOL BIZ Campaign:

- ÿ Wear loose fitting clothing.
- ÿ Loosen your collar and tie to let air through.
- ÿ Wear lightweight breathing clothing made of water-absorbing and quick drying materials.
- ÿ Wear light-colored clothing which absorb less heat in the hot sun.
- ÿ Go out with your sun-blocking umbrella or with your hat on. (Take your hat off frequently to let sweat dry off.)

INQUIRIES: *Ondanka Taisaku Ka* (Climate Change Policy Division),

Tel. 504-2185, Fax. 504-2229

HPCF NEWS

Hiroshima Peace Culture Foundation News

July 2018

Event schedules are subject to change. Please contact event organizers to confirm listed information.

CIR Question & Answer Day

Are you looking for advice about Hiroshima?

Come in for a chat with our CIR, Andrew Dempster!

DATE & TIME: Wednesday, July 25, 1:30 pm – 3:30 pm

PLACE: International Exchange Lounge

(International Conference Center Hiroshima 1F, 1-5 Nakjima-cho, Naka-ku)

RESERVATIONS ARE REQUIRED: Reservations can be made in person or by telephone at the International Exchange Lounge Tel. 247-9715 (Lounge open hours 9:00 am – 7:00 pm)

INQUIRIES: International Exchange Lounge Tel. 247-9715 Fax. 242-7452

Video Screening and A-bomb Legacy Successor's Talk

Hiroshima Peace Memorial Museum

Open to the public, no reservations required. Please feel free to drop by!

Video "HIROSHIMA - Message from Hibakusha"

This is a current video produced to coincide with the East Building's reopening. Approx. 22 min. Provided with English subtitles.

SCHEDULE:	8:45 am-	9:15 am-	9:45 am-	10:15 am-	*	*11:00 am - 3:00 pm: A-bomb Legacy Successor Talks
	3:15 pm-	3:45 pm-	4:15 pm-	4:45 pm-	5:15 pm-	

A-bomb Legacy Successor's Talk

A-bomb Legacy Successors have taken over the A-bomb survivor's experience and give testimony on their behalf. A-bomb Legacy Successors offer lectures in which they present the A-bomb survivors' experiences, the reality of the atomic bombing, and desires for peace. Approx. 60 min.

SCHEDULE: 11:00 am (Japanese), 12:30 pm (Japanese), 2:00 pm (English)

PLACE: Video Theater, 1F, East Building of Hiroshima Peace Memorial Museum

ADMISSION: Free

INQUIRIES: Curatorial Division, Hiroshima Peace Memorial Museum Tel. 241-4004 Fax. 542-7941
<http://hpmmuseum.jp/?lang=eng>

Special Exhibition: The Twinkling Stars Know Everything

Collection of parents' memoirs of their lost children who were students of Hiroshima Itchu Junior High School which was annihilated by the atomic bomb.

PERIOD: Monday, January 1 – Saturday, December 29, 2018

PLACE: Hiroshima National Peace Memorial Hall for the Atomic Bomb Victims, B1

ADMISSION: Free

INQUIRIES: Hiroshima National Peace Memorial Hall for the Atomic Bomb Victims
Tel. 543-6271 Fax. 543-6273



The **International Conference Center Hiroshima** is used for various purposes such as exhibitions and parties. Its large auditorium, which can accommodate 1,504 people, is ideal for concerts, lectures, and domestic and international conferences. The ICCH also includes the International Conference Hall, as well as small, medium, and large conference rooms. In all, the ICCH has five floors, three above ground and two basement floors.
Tel. 242-7777 (9:00 am – 9:00 pm) URL: <http://www.pcf.city.hiroshima.jp/icch/english.html>

Please feel free to contact to the International Exchange Lounge at 082-247-9715.

E-Mail: golounge@pcf.city.hiroshima.jp

July 2018

Movie Theaters July 2018



Here is a general list of movies being shown in theaters around Hiroshima. Due to unpredictable changes in scheduling, listings are subject to change without notice. Foreign films are usually in their original language with Japanese subtitles. When not specified, the admission is **¥1,800** for adults. Theaters offer various kinds of admission discount services, so please inquire at each theater for more information.

SALON CINEMA

[Hiroshima Toei Plaza Bldg. 8F, 16-10 Hatchobori, Naka-ku / Tel: 082-962-7772 / URL: <http://www.johakyu.co.jp/>]

Until July 19 **Only the Brave** / '17 USA
 Until July 12 **Wonderstruck** / '17 USA
 July 6 – 19 **The Square** / '17 Sweden, Germany, France, Denmark
 From July 13 **A Taxi Driver** / '17 Korea

HATCHOZA

[Fukuya Department Store Hatchobori 8F, 6-26 Ebisu-cho, Naka-ku / Tel: 082-546-1158 / URL: <http://www.johakyu.co.jp/>]

Until July 19 **Wonder Wheel** / '17 USA
 Until July 6 **Oh Lucy!** / '17 Japan, USA
 From July 13 **Lady Bird** / '17 USA
 From July 20 **I, Tonya** / '17 USA

YOKOGAWA CINEMA Tel : 231-1001

[3-1-12 Yokogawa-cho, Nishi-ku / Tel: 082-231-1001 / URL: <http://yokogawa-cine.jugem.jp/>]

July 1 – 7 **Shot! The Psycho-Spiritual Mantra of Rock** / '17 UK, USA
 July 1 – 14 **La Mort de Louis XIV** / '16 France, Portugal, Spain
 July 1 – 14 **The Outlaws** / '17 Korea
 July 8 – 21 **The Big House** / '18 USA, Japan
 July 8 – 21 **City of Ghosts** / '17 USA

AEON CINEMA HIROSHIMA

[Hiroshima Danbara Shopping Center 6F, 1-3-52 Danbara-minami, Minami-ku / Tel : 082-261-3770 / URL: <http://www.aeoncinema.com/cinema/hiroshima/>]

From June 15 **Maze Runner: The Death Cure** / '18 USA
 Until July 5 **Dangal** / '16 India
 Until July 6 **Aus dem Nichts / In the Face** / '17 Germany
 From June 29 **Solo: Star Wars Story** / '18 USA
 July 6 – 12 **Jurassic World** / '15 USA
 From July 13 **Jurassic World: Fallen Kingdom** / '18 USA

From August 3 **Mission: Impossible – Fallout** / '18 USA

109 CINEMAS

[Alpark 3F (north bldg.), 4-7-1 Kusatsu-minami, Nishi-ku / Tel: 05700-002-109 / URL: <http://www.109cinemas.net/Hiroshima>]

From June 1 **Deadpool 2** / '18 USA
 From June 1 **Bahubali: The Conclusion** / '17 India
 From June 15 **Maze Runner: The Death Cure** / '18 USA
 From June 29 **Solo: Star Wars Story** / '18 USA
 From July 13 **Jurassic World: Fallen Kingdom** / '18 USA

TOHO CINEMAS MIDORII

[Fuji Grand 3F, 1-5-2 Midorii, Asaminami-ku / Tel : 082-831-8060 / URL: <http://www.tohotheater.jp/>]
 Adults-¥1,800, University students-¥1,500, From preschoolers (3 years old and under) to High school students-¥1,000,

From June 15 **Wonder** / '17 USA
 From June 15 **Maze Runner: The Death Cure** / '18 USA
 From June 29 **Winchester** / '18 Australia, USA
 From June 29 **Solo: Star Wars Story** / '18 USA
 From July 13 **Jurassic World: Fallen Kingdom** / '18 USA

HIROSHIMA WALD 11

[AEON Mall Hiroshima Fuchu 4F, 2-1-1 Osu, Fuchu-cho, Aki-gun / Tel : 082-561-0600 / URL: <http://kinezo.jp/pc/wald11>]

From June 1 **Deadpool 2** / '18 USA
 From June 15 **Maze Runner: The Death Cure** / '18 USA
 From June 22 **Only the Brave** / '18 USA
 From June 23 **Future World** / '18 USA
 From June 29 **Solo: Star Wars Story** / '18 USA
 From July 13 **Inside** / '16 Spain, USA
 From July 13 **Jurassic World: Fallen Kingdom** / '18 USA
 From August 3 **Mission: Impossible – Fallout** / '18 USA

Please feel free to contact the International Exchange Lounge at 082-247-9715.

E-mail: golounge@pcf.city.hiroshima.jp

July 2018

From August 10 **Ocean's 8** / '18 USA
 From August 24 **Mamma Mia!: We Go Again**
 / '18 USA
 From August 31 **The Ant-Man and the Wasp**
 / '18 USA

2 Movie Showings at 10 am in the Morning

June 22 – July 5 **用心棒 / Youjinbo** /
 '61 Japan
 July 6 – 19 **椿三十郎 / Tsubaki Sanjuro**
 / '62 Japan
 July 20 – 26 **Singin' in the Rain** / '52 USA
 July 27 – August 2 **Mary Poppins** / '64 USA
 August 3 – 16 **The Bodyguard** / '92 USA
 August 17 – 30 **Grease** / '78 USA
 August 31 – September 13 **Platoon** / '86 USA
 September 14 – 27 **Top Gun** / '86 USA
 September 28 – October 11 **Popiol I Diament**
 / '57 Poland
 October 12 – 25 **Mitt Liv som Hund** /
 '85 Sweden
 October 26 – November 8 **Sophie's Choice**
 / '82 USA
 November 9 – 22 **近松物語 / Chikamatsu**
Monogatari / '54 Japan
 November 23 – December 6 **Giant** / '56 USA

T-JOY HIGASHI HIROSHIMA

[Fuji Grand Higashi Hiroshima 3F, 4405 Misonou, Saijo-cho, Higashi Hiroshima-shi / Tel : 082-493-6779 / URL: http://kinezo.jp/pc/t-joy_hiroshima]

From June 1 **Deadpool 2** / '18 USA
 From June 22 **Only the Brave** / '18 USA
 From June 29 **Solo: Star Wars Story** / '18 USA
 From July 13 **Jurassic World: Fallen**
Kingdom / '18 USA
 From August 10 **Ocean's 8** / '18 USA
 From August 24 **Mamma Mia!: We Go Again**
 / '18 USA
 From August 31 **The Ant-Man and the Wasp**
 / '18 USA



Please feel free to contact the International Exchange Lounge at 082-247-9715.

E-mail: golounge@pcf.city.hiroshima.jp

July 2018



Bilingual TV Programs

July 2018

#1: NHK Sogo #4: Hiroshima TV
#2: NHK E Tele #5: Home TV
#3: RCC #8: TSS

² Some changes may occur because of special programming.

NEWS

Monday - Sunday

NHK News 7 / 7:00 pm – 7:30 pm (#1)

Monday - Friday

News Watch 9 / 9:00 pm – 10:00 pm (#1)

² Except the 16th

REGULAR PROGRAMS

Tuesday

Design Talks +plus / 11:00 pm – 11:30 pm (#2) ² Rerun: Wednesday, 10:25 am – 10:55 am

Friday

Documentary Programs / 10:00 pm – 10:50 pm (#2)

Saturday

Dramatic Earth (Documentary Program) /

7:00 pm – 7:45 pm (#2) ² Except the 16th

² Rerun: Monday, midnight – 12:45 am; the 21st: 2:00 pm – 2:45 pm

DRAMAS

Monday

Hawaii Five-0 Season 2 ('11 USA) / 2:05 – 3:00 am (#4) ² Until the 2nd

Hawaii Five-0 X NCIS: Los Angeles / the 9th

2:00 am – 2:55 am; the 16th: 1:35 am –

2:30 am (#4)

² Broadcasted on the 9th & the 16th

Friday

School of Rock ('16 USA) / 7:25 pm – 7:50 pm (#2)

Saturday

Game Shakers ('15 USA) / 6:25 pm – 6:50 pm (#2)

Sunday

オクニヨ ('16 South Korea) / 11:00 pm – midnight (#1) ² Except the 15th

ANIMATIONS

Saturday

Curious George / 8:35 am – 9:00 am (#2)

SpongeBob SquarePants / 6:00 pm – 6:25 pm (#2)

Sunday

Thomas & Friends / 5:30 pm – 5:50 pm (#2)

MOVIES

1st Captain Phillips / '13 USA / 2:08 am – 4:00 pm (#3)

6th Jurassic Park / '01 USA / 9:00 pm – 10:54 pm (#4)

7th White House Down / '13 USA / 9:00 pm – 11:10 pm (#8)

8th Begin Again / '13 USA / 2:13 am – 4:05 am (#3)

13th Jurassic World / '15 USA / 9:00 pm – 11:24 pm (#4)

14th Transformers / '07 USA / 9:00 pm – 11:10 pm (#8)

16th Thomas & Friends: The Great Race / '16 UK / 9:00 am – 10:00 am (#2)

21st Transformers: Revenge of the Fallen / '09 USA / 9:00 pm – 11:10 pm (#8)

22nd The Hunt for Red October / '90 USA / 1:50 am – 3:45 am (#8)

22nd The Shallows / '16 USA / 2:08 am – 3:47 am (#3)

29th Australia / '08 Australia / 1:50 am – 3:45 am (#8)

29th 21 Grams / '03 USA / 2:08 am – 4:00 am (#3)

29th Mission Impossible: Rogue Nation / '15 USA / 9:00 pm – 11:05 pm (#5)

SPORTS

© Football

i 2018 FIFA World Cup Russia

² Broadcasted in Japanese only

² Check the official website for more information (URL: <http://www.fifa.com/worldcup/>)

Second Stage: Round of 16

1st 1A x 2B / 2:45 am – 5:00 am (#1)

1st 1B x 2A / 10:00 pm – 2:00 am (#3)

2nd 1D x 2C / 2:40 am – 5:10 am (#5)

2nd 1E x 2F / 10:45 pm – 1:00 am (#1)

3rd 1G x 2H / 2:45 am – 5:00 am (#1)

3rd 1F x 2E / 10:10 pm – 1:56 am (#5)

4th 1H x 2G / 2:45 am – 5:00 am (#1)

Quarter-finals

6th 10:00 pm – 2:00 am (#3)

7th 2:40 am – 5:15 am (#3)

7th 10:53 pm – 1:00 am (#1)

8th 2:45 am – 5:00 am (#1)

Please feel free to contact to the International Exchange Lounge at 082-247-9715.

E-Mail: golounge@pcf.city.hiroshima.jp

July 2018

Semi-finals

11th 2:45 am – 5:00 am (#1)
 12th 1:10 am – 5:10 am (#5)

Play-off for third place

14th 10:10 pm – 1:10 am (#5)

Finals

15th 11:45 pm – 2:30 am (#1)
 16th 9:55 am – 12:30 pm (#3)

© **Tennis**i **Wimbledon: The 2018 Championships**

✓ Check the official website for more information
 (URL: <http://www.wimbledon.com/index.html>)

3rd 12:25 am – 5:00 am (#2)
 3rd 11:55 pm – 2:45 am (#1)
 4th 2:45 am – 5:00 am (#2)
 4th 11:55 pm – 4:20 am (#1)
 5th 11:55 pm – 4:30 am (#1)
 6th 11:55 pm – 4:15 am (#1)
 8th Midnight – 5:00 am (#2)
 9th 11:55 pm – 3:55 am (#1)
 10th 11:55 pm – 2:20 am (#1)
 11th 2:20 am – 5:00 am (#2)
 11th 11:55 pm – 3:55 am (#1)
 12th 11:55 pm – 4:05 am (#1)
 13th 11:55 pm – 4:05 am (#1)
 14th 10:00 pm – midnight (#1)
 15th 10:00 pm – 12:30 am (#2)

© **Sumo**i **2018 July Grand Sumo Tournament (#1)**

July 8 – 22

8th 3:05 pm – 6:00 pm
 9th – 13th 3:08 pm – 6:00 pm
 14th – 16th 3:05 pm – 6:00 pm
 17th – 20th 3:08 pm – 6:00 pm
 21st & 22nd 3:05 pm – 6:00 pm

© **Golf**i **The 147th Open Carnoustie (#5)**

² Broadcasted in Japanese only

19th - 21st 11:15 pm – 4:00 am
 22nd 10:00 pm – 2:55 am



Please feel free to contact to the International Exchange Lounge at 082-247-9715.

E-Mail: golounge@pcf.city.hiroshima.jp

July 2018

Concerts & Plays



Ticket Offices

- j EDION Play Guide (SUNMALL, 1F) (Kamiya-cho, Naka-ku; Tel. 247-5111)
- k YAMAHA Music (Kamiya-cho, Naka-ku; Tel. 244-3779 Closed on the 1st & the 3rd Wednesdays)
- l Hiroshima Yume Plaza (Hondori, Naka-ku; Tel. 544-1122 Closed on Wednesdays)
- m Kawai Hiroshima (2-2-6 Kamiya-cho, Naka-ku; Tel. 243-9291 Closed on Mondays)
- n Fukuya Department Store, Hatchobori (7F) (Ebisu-cho, Naka-ku; Tel. 246-6111)
- o Fukuya Department Store, Hiroshima Station (7F) (Matsubara-cho, Minami-ku; Tel. 568-3111)
- p Alpark Tenmaya (3F) (Inokuchi-myojin, Nishi-ku; Tel. 501-1111)
- q Hiroshima Arts Gakki (Hatchoboru, Naka-ku; Tel. 227-6601)

Date / Starting Time (Opening Time) / Venue / Ticket Price / Tickets Go on Sale Date / Ticket Offices / Inquiries

♪ Event schedules are subject to change.

Please contact the event office before you go. ♪

July

€ MACHINE HEAD:

Catharsis Japan Tour 2018

5th Thursday / 7:00 pm (6:00 pm) / Hiroshima Club Quattro / ¥8,000 / Now on sale / Hiroshima Club Quattro, e+, Ticket PIA, Lawson, •, Tower Records Hiroshima / Hiroshima Club Quattro 082-542-2280

€ Prague Radio Symphony Orchestra & Dai Miyata (cello)

6th Friday / 6:45 pm (6:15 pm) / Ueno Gakuen Hall / SS-¥12,000 S-¥10,000 A-¥8,000 B-¥6,000 / Now on sale / • † / Green Concert Hiroshima 082-241-8868

NEW!

€ Music History Concert vol. II-3: Romantic Music

7th Saturday / 2:00 pm / Aki Kumin Bunka Center / Adults-¥2,500 High school students and under-¥1,500 / Now on sale / •, Aki Kumin Bunka Center / 090-7508-2012

€ Hiroshima Symphony Orchestra: The 382nd Subscription Concert

(Toshio Hosokawa: *Meditation - to the victims of Tsunami 3.11 -*; Messiaen: *le Tombeau resplendissant*; Stravinsky: *L'Oiseau de feu (1910 Edition)*)
7th Saturday / 3:00 pm (2:00 pm) / Hiroshima Bunka Gakuen HBG Hall / S-¥5,200 A-¥4,700 B-¥4,200 Students-¥1,500 (Student tickets are only sold at the Hiroshima Symphony Orchestra Office.) / Now on sale / j , n o † ^ , Lawson, Ticket PIA, Chugoku Shimbun & Hiroshima Symphony Orchestra Office / Hiroshima Symphony Orchestra Office 082-532-3080 E-mail: info@hirokyo.or.jp
- Conductor: Jun Märkl

€ Hiroshima City Harmony Brass Band: Regular Concert 2018

8th Sunday / 2:00 pm (1:30 pm) / Minami Kumin Bunka Center / Free admission / Hiroshima City Harmony Brass Band 050-5274-7295

€ Hiromitsu Agatsuma: "Standard Songs" feat. Chikuzen Sato 2018

8th Sunday / 4:00 pm (3:30 pm) / Blue Live Hiroshima / ¥6,800 / Now on sale / Lawson, Ticket PIA, e+, • † / Candy Promotion 082-249-8334

- This is a *shamisen* (traditional Japanese guitar) and piano concert.

€ Classical Music Concert for Children: The Wolf and the Seven Young Goats

14th Saturday / 1:00 pm (12:30 pm) / Aki Kumin Bunka Center / Advance: Junior high school students and above-¥1,000 Elementary school students and preschoolers (3 years old and above)-¥500; At the door: Junior high school students and above-¥1,200 Elementary school students and preschoolers (3 years old and above)-¥600 / Now on sale / JMS Aster Plaza, Kumin Bunka Centers / Aki Kumin Bunka Center 082-824-1330 (closed on Mondays)

€ Opera: La Bohème

14th Saturday / 6:30 pm (6:00 pm) / Gewand Halle / ¥4,000 (all non-reserved seats) / Now on sale / • ... † / Executive Committee 082-255-4349
- This will be played in Italian with Japanese subtitles.

Please feel free to contact the International Exchange Lounge at 082-247-9715.

E-mail: golounge@pcf.city.hiroshima.jp

July 2018

€ **Kyoko Sako Mandolin Recital**

14th Saturday / 6:30 pm (6:00 pm) / Elisabeth University of Music, Xavier Hall / Advance: Adults-¥2,500 Students-¥1,000; At the door: Adults-¥3,000 Students-¥1,500 (all non-reserved seats) / Now on sale / • / E-mail: sako-mb@hotmail.com
 - Mandolin: Kyoko Sako / Electronics: Shintaro Imai

€ **Ikuyo Nakamichi Piano Recital**

16th Monday / 1:30 pm (1:00 pm) / International Conference Center Hiroshima, Phoenix Hall / Reserved seats: ¥3,500; Non-reserved seats: High school students and above-¥2,500 Junior high and elementary school students-¥1,000 / Please ask the concert organizer for ticket office information. / Hiroshima Tomo no Kai 080-4558-5546

€ **Saaya Kimura Violin Concert**

21st Saturday / 4:00 pm (3:30 pm) / lifeone221 / Advance: Adults-¥2,000 Senior & junior high school students-¥1,500 Elementary school students and under-¥500; At the door: Adults-¥2,500 Senior & junior high school students-¥2,000 Elementary school students-¥1,000 / Please ask the concert organizer for ticket office information. / lifeone music 082-922-0028 E-mail: lifeone@cyber.ocn.ne.jp

NEW!

€ **Hiroshima Symphony Orchestra: The 28th Subscription Concert in Kure**

(Mozart: *Die Entführung aus dem Serail, K. 384 Overture*; Chopin: *Piano Concerto No. 1 in E Minor, Op. II*; Rimsky-Korsakov: *Symphony Suite "Scheherazade" Op. 35*)
 22nd Sunday / 2:30 pm (2:00 pm) / Kure City Bunka Hall / S-¥3,700 A-¥3,200 B-¥2,700 Students-¥1,000 ² Student ID will be required on the concert day. / Now on sale / • , ... † , Chugoku Shimbun, Lawson, Ticket PIA, Seven-Eleven, Hiroshima Symphony Orchestra Office / Kure City Bunka Hall 0823-25-7878; Hiroshima Symphony Orchestra Office 082-532-3080
 - Conductor: Shigeo Genda / Piano: Ikuyo Nakamichi

€ **Kiev Ballet:**

A Best Selection of Classical Ballet

24th Tuesday / 2:00 pm (1:30 pm) / Hatsukaichi Bunka Hall Sakurapia / ¥6,500 / Now on sale / Ticket PIA, Lawson, • , Sakurapia / Hatsukaichi Bunka Hall Sakurapia 0829-20-0111

€ **Hiroshima Symphony Orchestra, Discovery Series: Schubert Symphonien Zyklus vol. 2**

(Suppé: *Boccaccio, Overture*; Berg: *Sieben frühe Lieder*; Schubert: *Symphony Nr. 6 C-dur, D589*)
 27th Friday / 6:45 pm (5:45 pm) / JMS Aster Plaza / S-¥5,200 A-¥4,200 B-¥3,200 Students-¥1,000 (Student tickets are only sold at the Hiroshima

Symphony Orchestra Office.) / Now on sale / j , n o † ^ , Lawson, Ticket PIA, Chugoku Shimbun, JMS Aster Plaza & Hiroshima Symphony Orchestra Office / Hiroshima Symphony Orchestra Office 082-532-3080 E-mail: info@hirokyo.or.jp
 - Conductor: Tatsuya Shimono
 Soprano: Miwako Handa

NEW!

€ **Masaya Yamashita & Yayoi Tominaga: Saxophone & Piano Salon Concert**

28th Saturday / 2:00 pm (1:30 pm) / Aki Kumin Bunka Center / Adults-¥2,000 High school students and under-¥1,000 / Ticket reservations & Inquiries: MY Project 050-3740-8570 E-mail: sax.piano.myproject@gmail.com

€ **Hatsukaichi Peace Concert 2018**

29th Sunday / 1:30 pm (1:00 pm) / Hatsukaichi Bunka Hall Sakurapia / Advance: 19 years old and above-¥1,000 18 years old and under-¥500; At the door: 19 years old and above-¥1,200 18 years old and under-¥700 / Now on sale / Sakurapia / Hatsukaichi Bunka Hall Sakurapia 0829-20-0111

€ **Yasuji Ohagi & Masakazu Tokutake Guitar Duo Recital**

29th Sunday / 2:00 pm (1:30 pm) / lifeone221 / Advance-¥4,500 At the door-¥5,000 ² 80 seats only / Ticket reservations & Inquiries: lifeone music 082-922-0028 E-mail: lifeone@cyber.ocn.ne.jp

NEW!

€ **Eusebius Quartett: The 1st Concert**

29th Sunday / 4:00 pm (3:30 pm) / JMS Aster Plaza / Adults-¥3,000 Students-¥1,000 (all non-reserved seats) / Now on sale / JMS Aster Plaza, • / Eusebius Quartett E-mail: eusebiusQ@gmail.com 090-9818-3849 (Kumazawa)

€ **Pacific Music Festival (PMF) 2018**

31st Tuesday / 6:30 pm (6:00 pm) / International Conference Center Hiroshima, Phoenix Hall / S-¥5,000 A-¥4,000 B-¥3,000 / Now on sale / Lawson, Ticket PIA, e+, • / Candy Promotion Hiroshima 082-249-8334
 - Conductor: Valery Gergiev

August

€ **Elisabeth University of Music Concert Series Summer Vocal Concert**

1st Wednesday / 6:45 pm (6:15 pm) / Elisabeth University of Music, Cecilia Hall / Advance-¥2,000 At the door-¥2,500 / Now on sale / Elisabeth University of Music, Ticket PIA / Elisabeth University of Music 082-225-8004 or 082-221-0918 E-mail: enso01@eum.ac.jp

Please feel free to contact the International Exchange Lounge at 082-247-9715.

E-mail: golounge@pcf.city.hiroshima.jp

July 2018

NEW!

☪ Sandii & Dennis Bovell

3rd Friday / 8:00 pm (7:00 pm) / Hiroshima Club Quattro / Advance-¥4,800 At the door-¥5,300 / Now on sale / Club Quattro, e+, Ticket PIA, Lawson, •, Tower Records Hiroshima / Hiroshima Club Quattro 082-542-2280

NEW!

☪ Requiem in Hiroshima vol. 18

4th Saturday / 4:30 pm (4:00 pm) / Hiroshima Kenmin Bunka Center / Advance: Adults-¥2,500 Students-¥1,500; At the door: Adults-¥2,800 Students-¥1,800 / Now on sale / • † ‡ / 090-1014-8498 (Kobayashi)

☪ Hiroshima Symphony Orchestra: An Evening of Peace Concert

(*Brahms: Symphony No. 3 in F major, op. 90; Brahms: Concerto No. 2 in B-flat major, op. 83*)
5th Sunday / 3:00 pm (2:00 pm) / Hiroshima Bunka Gakuen HBG Hall / S-¥5,000 A-¥4,000 Students-¥2,000 (Student tickets are only sold at the Hiroshima Symphony Orchestra Office.) / Now on sale / j , n o † ^ , Lawson, Ticket PIA, Chugoku Shimbun & Hiroshima Symphony Orchestra Office / Hiroshima Symphony Orchestra Office 082-532-3080 E-mail: info@hirokyo.or.jp
- Conductor: Kazuyoshi Akiyama / Piano: Nelson Freire

☪ Peace Concert in Hiroshima

6th Monday / 6:00 pm (5:30 pm) / JMS Aster Plaza / ¥1,000 (all non-reserved seats) / Now on sale / „ , Ticket PIA / 090-9733-6962 E-mail: peaceconcert.hiroshima@gmail.com

NEW!

☪ Hiroshima Junior Marimba Ensemble Concert Vol. 28

11th Saturday / 2:00 pm (1:30 pm) / JMS Aster Plaza / Advance-¥1,000 At the door-¥1,200 (all non-reserved seats) / Now on sale / • , Hatsukaichi Bunka Hall Sakurapia / 082-271-1477 (Asada)

☪ Kagura

12th Sunday / 1:00 pm – 5:00 pm (noon) / JMS Aster Plaza / Advance-¥1,500 At the door-¥1,800 (all non-reserved seats) / Now on sale / • f, JMS Aster Plaza / JMS Aster Plaza 082-244-8000

NEW!

☪ Ensemble Preghiera: The 5th Concert in Hiroshima

14th Tuesday / 7:00 pm (6:30 pm) / JMS Aster Plaza / Adults-¥3,000 Students-¥1,000 (all non-reserved seats) / Now on sale / • , JMS Aster Plaza / Executive Committee 090-9818-3849, E-mail: ens.preg@gmail.com (Kumazawa)

☪ Paul Pesthy with *Hirokyo* (Hiroshima Symphony Orchestra) Strings

15th Wednesday / 6:30 pm (6:00 pm) / JMS Aster Plaza / Advance: Adults-¥3,000 Students-¥2,000; At the door: Adults-¥3,500 Students-¥2,500 / Now on sale / JMS Aster Plaza / Hirokyo Strings 090-8301-5204 E-mail: catalto.1125@gmail.com
- Paul Pesthy is a 1st principal viola of the Stuttgart Radio Symphony Orchestra.

☪ Ken Boothe with Cool Wise Man Japan Tour Hiroshima

15th Wednesday / 7:30 pm (7:00 pm) / Hiroshima Club Quattro / ¥6,000 / Now on sale / e+, Ticket PIA, Lawson, •, Tower Records Hiroshima / Hiroshima Club Quattro 082-542-2280

☪ KAGURA for Peace 2018 in Hiroshima: Hiroshima – Kagura and <OROCHI for Kagura and Orchestra> Repose of Souls and Resurgence

☪ 18th Saturday • 19th Sunday / ☪ 6:00 pm (5:30 pm) • 1:30 pm (1:00 pm) / JMS Aster Plaza / Now on sale / • f... † ‡ , JMS Aster Plaza, Hatsukaichi Bunka Hall Sakurapia / Hiroshima Bijutsu Kenkyusho 082-506-3060

TICKET PRICES: ² All non-reserved seats

w Ticket for August 18 w

Advance: Adults-¥3,000 Students-¥2,000
Elementary school students-¥1,000
Pair tickets-¥5,000
At the door: Adults-¥3,500 Students-¥2,500
Elementary school students-¥1,500
Pair tickets-¥5,500

w Ticket for August 19 w

Advance: Adults-¥4,000 Students-¥3,000
Elementary school students-¥1,000
Pair tickets-¥7,000
At the door: Adults-¥4,500 Students-¥3,500
Elementary school students-¥1,500
Pair tickets-¥7,500

w 2-day Tickets: ¥6,000

☪ Ventures Japan Tour 2018

23rd Thursday / 6:30 pm (6:00 pm) / Hatsukaichi Bunka Hall Sakurapia / ¥6,000 / Now on sale / Lawson, Ticket PIA, e+, • † , Sakurapia / Candy Promotion Hiroshima 082-249-8334; Hatsukaichi Bunka Hall Sakurapia 0829-20-0111

☪ Orchestra di Roma Italia: Film Music Concert

23rd Thursday / 6:30 pm (6:00 pm) / Kure City Bunka Hall / S-¥6,500 A-¥5,000 / Now on sale / • † , Ticket PIA, Lawson, e+ / TSS Office 082-253-1010; Kure City Bunka Hall 0823-25-7878



Please feel free to contact the International Exchange Lounge at 082-247-9715.

E-mail: golounge@pcf.city.hiroshima.jp

July 2018

€ Legare Concert Vol. 4

NEW!

25th Saturday / 2:30 pm (2:00 pm) / Hatsukaichi
Bunka Hall Sakurapia / Advance: Adults-¥2,000
Students-¥1,000; At the door: Adults-¥2,500
Students-¥1,500 / Please ask the concert organizer
for ticket office information. / 090-9413-7959
(Ukena) - This is a concert by piano, flute & soprano.

€ 2018 ~ Erth's Dinosaur Zoo ~

27th Monday / • 1:00 pm (12:30 pm) , 3:30 pm
(3:00 pm) / Hiroshima Bunka Gakuen HBG Hall /
¥3,000 / Now on sale / Lawson, Ticket PIA, e+ /
Candy Promotion Hiroshima 082-249-8334

€ Freiburger Domisingknaben (Freiburg Cathedral Boys' Choir) 2018 Japan Tour

31st Friday / 6:30 pm (6:00 pm) / Kure City Bunka
Hall / Reserved seats: Adults-¥2,500 Students-
¥1,500; Non-reserved seats: Adults-¥1,500
Students-¥1,000 / Now on sale / • †, Chugoku
Shimbun / Kure City Bunka Hall 0823-25-7878

August & September

€ Disney on Ice Japan Tour 2018: Mickey's Special Celebration

August 31 (Fri.), September 1 (Sat.) & 2 (Sun.) /
Hiroshima Green Arena / Now on sale / Rakuten
Ticket, e-get, e+, Lawson, Ticket PIA, Seven-Eleven,
j / Disney on Ice Hiroshima Office (inside
Hiroshima TV) 082-541-5599 (Mon. - Fri., 10 am
- 6 pm)

² Disney on Ice Schedule ²

Aug. 31	Sept. 1	Sept. 2
-	10:00 am	10:00 am
2:30 pm	2:00 pm	2:00 pm
6:30 pm	6:00 pm	6:00 pm

² Doors will open 45 min. before the times above.

² Ticket Prices²

	Aug. 31		Sept. 1 & 2	
	Adults ¹	Children ²	Adults	Children
Premium Seats ³	¥8,000	¥8,000	¥8,000	¥8,000
S	¥5,500	¥4,500	¥6,000	¥5,000
Pair Tickets ⁴	¥10,000		¥11,000	

<NOTICE>

- ¹ Junior high school students and above
- ² 3 years old to elementary school 6th grade
- ³ Premium seats are front-row seats of the arena.
- ⁴ Pair tickets are available for 6:30 pm on Aug. 31

and 6:00 pm on Sept. 1 & 2.

² Children under 2 years old are free if they sit on the lap of an accompanying adult (one child per adult). Tickets are required for them if they take their own seats.

September

€ Masayuki Hirahara Piano Concert

1st Saturday / 2:30 pm (2:00 pm) / Blue Live
Hiroshima / ¥5,500 (all non-reserved seats) / Now
on sale / Blue Live Ticket Center, Ticket PIA / Blue
Live Hiroshima 082-250-5522

- Guest: Keita Orimoto (*shakuhachi* & *so**)

**Shakuhachi*: traditional Japanese bamboo flute
So: traditional Japanese harp

€ Tsukemen Live 2018 "X"

1st Saturday / 3:00 pm (2:30 pm) / JMS Aster Plaza
/ ¥5,000 / Now on sale / Lawson, Ticket PIA, e+ /
UNION Music Office 082-247-6111

€ Kojima Musica Collegia: The 28th Regular Concert

NEW!

2nd Sunday / 4:00 pm (3:00 pm) / JMS Aster Plaza /
Advance: Adults-¥2,500 Students-¥1,500 Family
pair tickets-¥3,500 Reserved seats-¥3,500; At the
door: Adults-¥2,800 Students-¥1,700 Family
pair tickets-¥3,800 Reserved seats-¥3,800 / Now
on sale / • / 080-1944-2383 (Kojima)

€ Hiroshima Symphony Orchestra: The 383rd Subscription Concert

(Mozart: *Don Giovanni*, K. 527 *Overture*; Mozart: *Piano
Concerto No. 9 in E-flat major*, K. 271 "*Jeunehomme*";
Beethoven: Symphony No. 4 in B-flat major, op. 60)

7th Friday / 6:45 pm (5:45 pm) / Hiroshima Bunka
Gakuen HBG Hall / S-¥5,200 A-¥4,700 B-
¥4,200 Students-¥1,500 (Student tickets are only
sold at the Hiroshima Symphony Orchestra Office.) /
From Saturday, July 7 (from Monday, July 9 at the
Hiroshima Symphony Orchestra Office) /
j, n o † ~, Lawson, Ticket PIA, Chugoku
Shimbun & Hiroshima Symphony Orchestra Office
/ Hiroshima Symphony Orchestra Office 082-532-
3080 E-mail: info@hirokyo.or.jp - Conductor:
Gaetano d'Espinosa / Piano: Kim Hyun Jung

€ The Show a Tribute to ABBA

NEW!

12th Wednesday / 7:00 pm (6:30 pm) / Ueno
Gakuen Hall / S-¥11,800 A-¥9,800 / Now on
sale / Lawson, Ticket PIA, e+ / HIGHERSELF
082-545-0082 (weekdays, 11 am - 7 pm)



Please feel free to contact the International Exchange Lounge at 082-247-9715.

E-mail: golounge@pcf.city.hiroshima.jp

July 2018

NEW!

€ *Shochiku Kabuki*

15th Saturday / • Noon (11:30 am) , 4:30 pm (4:00 pm) / Kure City Bunka Hall / S-¥6,200 A-¥4,200 B-¥3,100 Students (those who are 27 years old and under)-¥1,080 (Student tickets are only sold at Kure City Bunka Hall, Ticket PIA, Lawson, Seven-Eleven. Student ID will be required at the entrance on the performance day.) / Now on sale / • †, Ticket PIA, Lawson, Seven-Eleven / Kure City Bunka Hall 0823-25-7878

- This is a traditional Japanese performing art.

€ Piano Cosmos Concert Vol. 6

NEW!

17th Monday / 2:30 pm (2:00 pm) / Gewand Halle / Adults-¥2,000 Students-¥1,000 / Please ask the concert organizer for ticket office information. / 082-942-2987 (Kyomoto) E-mail: pianocosmos2000@gmail.com

€ Hiroshima Opera Renaissance Mozart Series Vol. 2: Idomeneo

NEW!

☾ 22nd Sat. • 23rd Sun. / 2:00 pm (1:15 pm) / JMS Aster Plaza / SS-¥8,000 S-¥6,500 A-¥5,000 B-¥3,500 Students-¥2,000 ² SS tickets are sold at JMS Aster Plaza only. Student tickets will be sold at the door on each performance date. / Now on sale / • †, Chugoku Shimbun, JMS Aster Plaza, Ticket PIA, Lawson / Hiroshima Opera and Music Promotion Committee 082-244-8000

- This will be played in Italian with Japanese subtitles.

€ Alice Sara Ott Piano Recital

23rd Sunday / 3:00 pm (2:30 pm) / International Conference Center Hiroshima, Phoenix Hall / S-¥6,000 A-¥4,800 B-¥3,800 / Now on sale / • , e+, Ticket PIA, Lawson / Hiroshima TV Event Information Center 082-249-1218 (Mon. – Fri., 10 am – 6 pm)

€ Mami Hagiwara Piano Recital

24th Monday / 4:00 pm (3:30 pm) / Elisabeth University of Music, Cecilia Hall / ¥4,000 / Now on sale / • † ‡, Lawson, Ticket PIA / HOME Event Center 082-221-7116 (weekdays, 10 am – 5 pm)

€ Char 2018 Tour "Old News"

NEW!

24th Monday / 4:00 pm (3:30 pm) / Blue Live Hiroshima / ¥7,800 / Now on sale / Lawson, Ticket PIA, e+ / Yumebanchi Hiroshima 082-249-3571 (weekdays, 11 am – 7 pm)

€ Wilko Johnson

NEW!

24th Monday / 6:00 pm (5:00 pm) / Hiroshima Club Quattro / ¥6,500 / Now on sale / e+, Ticket PIA, Lawson, • , Tower Records Hiroshima / Hiroshima Club Quattro 082-542-2280

€ An Evening of Piano & Violin Duo Concert

25th Tuesday / 6:30 pm (6:00 pm) / Gewand Halle / Adults-¥2,500 Students-¥1,500 At the door-¥3,000 / Now on sale / • „ / 082-239-2373 (Yajima)

€ Estonian National Male Choir

27th Thursday / 6:30 pm (6:00 pm) / JMS Aster Plaza / S-¥5,500 A-¥4,500 B-¥3,500 / Now on sale / • † ‡, JMS Aster Plaza, Lawson, Ticket PIA / HOME Event Center 082-221-7116 (weekdays, 10 am – 5 pm)

€ Il Divo: Timeless

NEW!

29th Saturday / 6:00 pm (5:30 pm) / Ueno Gakuen Hall / S-¥15,000 A-¥13,000 B-¥11,000 / Now on sale / • †, Lawson, Ticket PIA, e+ / HOME Event Center 082-221-7116 (weekdays, 10 am – 5 pm); Yumebanchi Hiroshima 082-249-3571 (weekdays, 11 am – 7 pm)

October

NEW!

€ *Bunraku* (traditional Japanese puppet play)

3rd Wednesday / ☾ 1:30 pm (1:00 pm) • 6:30 pm (6:00 pm) / JMS Aster Plaza / Stalls-¥4,500 Balcony seats-¥2,500 Wheel chair seats-¥4,500 ² Wheel chair seats will be sold at JMS Aster Plaza only. / From Tuesday, July 10 (from Saturday, July 7 at JMS Aster Plaza) / JMS Aster Plaza, • †, Chugoku Shimbun, Ticket PIA, Lawson / JMS Aster Plaza 082-244-8000

€ Misa Shitaka Piano Recital

NEW!

6th Saturday / 3:00 pm (2:30 pm) / Hamamatsu Piano-sha 3F, Hall / Advance-¥3,000 At the door-¥3,300 / Now on sale / e+, FamilyMart, Hamamatsu Piano-sha, • / Nakayama Midori Art House 080-1359-0925

€ Hiroshima Symphony Orchestra: The 384th Subscription Concert

(*Smetana: Blaník, from Má Vlast; Bruckner (arr. Skrowaczewski for string orchestra): String Quintet in F major, WAB 112: III. Adagio; Dvořák (arr. Tatsuhiko Nakahara): Songs My Mother Taught Me (orchestra version); Husa: Music for Prague 1968*)

7th Sunday / 3:00 pm (2:00 pm) / Hiroshima Bunka Gakuen HBG Hall / S-¥5,200 A-¥4,700 B-¥4,200 Students-¥1,500 (Student tickets are only sold at the Hiroshima Symphony Orchestra Office.) / From Tuesday, August 7 / j , n o † ^ , Lawson, Ticket PIA, Chugoku Shimbun & Hiroshima Symphony Orchestra Office / Hiroshima Symphony Orchestra Office 082-532-3080 E-mail: info@hirokyo.or.jp

- Conductor: Tatsuya Shimono

Please feel free to contact the International Exchange Lounge at 082-247-9715.

E-mail: golounge@pcf.city.hiroshima.jp

July 2018

☎ **Jake Shimabukuro:**

The Greatest Day Tour in Japan 2018

13th Saturday / 5:00 pm (4:00 pm) / Blue Live
Hiroshima / ¥7,300 / From Saturday, July 7 /
Lawson, Ticket PIA, e+ / Yumebanchi Hiroshima
082-249-3571 (weekdays, 11 am – 7 pm)
- Jake Shimabukuro is an ukulele player from Hawaii.

NEW!

☎ **Deep Purple “The Long Goodbye”**

20th Saturday / 6:00 pm (5:30 pm) / Ueno Gakuen
Hall / S-¥15,000 A-¥14,000 / Now on sale /
Lawson, e+, Ticket PIA, • / Yumebanchi
Hiroshima 082-249-3571

NEW!

☎ **Hiroshima Chamber Soloists Concert Vol. 16**

22nd Monday / 6:45 pm (6:00 pm) / Hiroshima
Kenmin Bunka Center / Adults: Advance-¥4,000
At the door-¥4,500; Students-¥2,000 / Now on sale
/ Hiroshima Kenmin Bunka Center, • ... † / 082-
252-4721

☎ **K-Ballet Company: Romeo & Juliet**

23rd Tuesday / 6:30 pm (6:00 pm) / Hiroshima
Bunka Gakuen HBG Hall / SS-¥18,000 S-
¥15,000 A-¥11,000 B-¥8,000 / Now on sale /
Seven-Eleven, • † / RCC 082-222-1133

NEW!

☎ **Elisabeth University of Music Concert Series:
The 77th Regular Concert**

27th Saturday / 3:00 pm (2:30 pm) / Elisabeth
University of Music, Cecilia Hall / ¥1,000 (all non-
reserved seats) / Now on sale / Elisabeth University
of Music, Ticket PIA / Elisabeth University of
Music 082-225-8004 E-mail: enso01@eum.ac.jp

☎ **S** t kingz “The Library”**

☎ 27th Saturday • 28th Sunday / ☎ the 27th: • 1:00
pm , 6:00 pm • the 28th: Noon / JMS Aster
Plaza / ¥6,500 / From Saturday, July 7 / Lawson,
Ticket PIA, e+ / TSS Office 082-253-1010
(weekdays, 10 am – 6 pm); Candy Promotion
Hiroshima 082-249-8334 (weekdays, 11 am – 6:30
pm)

☎ **Hiroshima Symphony Orchestra:
Bouquet of Music HSO Masterpiece Concert
~ Autumn ~**

(Haydn: *Trumpet Concerto, in E-flat major, Hob. Vllc. 1;*
Liszt: Les Preludes, S97/R414; Sibelius: Symphony No. 2
in D major, Op. 43)

28th Sunday / 3:00 pm (2:00 pm) / International
Conference Center Hiroshima, Phoenix Hall / S-
¥4,200 Pair tickets (S seats)-¥6,400 A-¥3,200
B-¥2,200 Students-¥1,500 (Student tickets are only
sold at the Hiroshima Symphony Orchestra Office.) /
Now on sale / j , n o † ^ , Lawson, Ticket PIA,
Chugoku Shimbun & Hiroshima Symphony

Orchestra Office / Hiroshima Symphony Orchestra
Office 082-532-3080 E-mail: info@hirokyo.or.jp
- Conductor: Gen Ohta / Trumpet: Uwe Komischke /
Navigator: Shogo Kariyazaki

November

NEW!

☎ **Taro Hakase Concert Tour 2018**

2nd Friday / 6:30 pm (6:00 pm) / Hiroshima Bunka
Gakuen HBG Hall / ¥7,800 / From Saturday,
August 18 / Lawson, Ticket PIA, e+ / Candy
Promotion Hiroshima 082-249-8334

☎ **Kodo – Muguru –**

9th Friday / 6:30 pm (6:00 pm) / JMS Aster Plaza /
S-¥6,000 A-¥4,000 / From Saturday, July 14 /
Lawson, Ticket PIA, e+, Seven-Eleven, • † / TSS
Office 082-253-1010 (weekdays, 10 am – 6 pm)
- *Kodo* is a *taiko* (traditional Japanese drums)
performance company.

NEW!

☎ **Iceland Symphony Orchestra with Vladimir
Ashkenazy (conductor) x Nobuyuki Tsujii
(piano)**

9th Friday / 6:45 pm (6:00 pm) / Hiroshima Bunka
Gakuen HBG Hall / S-¥17,000 A-¥14,000 B-
¥11,000 C-¥9,000 / Now on sale / • † ‡ , Ticket
PIA, Lawson / HOME Event Center 082-221-
7116 (weekdays, 10 am – 5 pm)

☎ **Hiroshima Symphony Orchestra:
The 385th Subscription Concert**

(Brahms: *Violin Concerto in D major, op. 77; Brahms:
Symphony No. 4 in E major, op. 98*)
16th Friday / 6:45 pm (5:45 pm) / Hiroshima Bunka
Gakuen HBG Hall / S-¥6,200 A-¥5,700 B-
¥5,200 Students-¥1,500 (Student tickets are only
sold at the Hiroshima Symphony Orchestra Office.) /
From Sunday, September 16 (from Tuesday,
September 18 at the Hiroshima Symphony
Orchestra Office) / j , n o † ^ , Lawson, Ticket
PIA, Chugoku Shimbun & Hiroshima Symphony
Orchestra Office / Hiroshima Symphony Orchestra
Office 082-532-3080 E-mail: info@hirokyo.or.jp
- Conductor: Christian Arming / Violin: Akiko Suwanai

December

☎ **Hiroshima Symphony Orchestra, Discovery
Series: Schubert Symphonien Zyklus vol. 2**

(Suppé: *Leichte Kavallerie, Ouvertüre; Schubert:
Symphonie Nr. 7 h-moll, D759 “Unvollendete”;*
Schönberg: Verklärte Nacht op. 4)
7th Friday / 6:45 pm (5:45 pm) / JMS Aster Plaza /
S-¥5,200 A-¥4,200 B- ¥3,200 Students-

Please feel free to contact the International Exchange Lounge at 082-247-9715.

E-mail: golounge@pcf.city.hiroshima.jp

July 2018

¥1,000 (Student tickets are only sold at the Hiroshima Symphony Orchestra Office.) / From Sunday, October 7 (from Tuesday, October 9 at the Hiroshima Symphony Orchestra Office) / j , n o t ^ , Lawson, Ticket PIA, Chugoku Shimbun, JMS Aster Plaza & Hiroshima Symphony Orchestra Office / Hiroshima Symphony Orchestra Office 082-532-3080 E-mail: info@hirokyo.or.jp
- Conductor: Tatsuya Shimono

☞ **King Crimson: Uncertain Times**

14th Friday / 7:00 pm (6:00 pm) / Hiroshima Bunka Gakuen HBG Hall / SS-¥20,000 S-¥16,000 / Now on sale / Lawson, e+, Ticket PIA, • / Yumebanchi Hiroshima 082-249-3571 (Mon. – Fri., 11 am – 7 pm); TSS 082-253-1010 (Mon. – Fri., 10 am – 6 pm)



Please feel free to contact the International Exchange Lounge at 082-247-9715.
E-mail: golounge@pcf.city.hiroshima.jp

July 2018



Event Halls

® **Hiroshima Bunka Gakuen HBG Hall 広島文化学園 HBG ホール**

(3-3 Kako-machi, Naka-ku, Hiroshima Tel. 082-243-8881)

† Take the No.24 bus bound for Yoshijima Eigyocho (吉島営業所) and get off at Kako-machi (加古町).
Walking time to destination: 2 minutes

® **Hiroshima Kenmin Bunka Center 広島県民文化センター**

(1-5-3 Ote-machi, Naka-ku, Hiroshima Tel. 082-245-2311)

† Take a streetcar or a bus and get off at Hondori (本通) or Kamiya-cho (紙屋町). Walking time to destination is 5 minutes.

® **JMS Aster Plaza JMS アステールプラザ**

(4-17 Kako-machi, Naka-ku, Hiroshima Tel. 082-244-8000)

† Take the No.24 bus bound for Yoshijima Eigyocho (吉島営業所) and get off at Kako-machi (加古町).
Walking time to destination is 2 minutes.

® **Ueno Gakuen Hall 上野学園ホール**

(19-1 Hakushima-kita-machi, Naka-ku, Hiroshima Tel. 082-223-6367)

† Take the Astramline bound for Koiki Koen-mae (広域公園前) or Chorakuji (長楽寺) Station and get off at Hakushima (白島) Station. Walking time to destination is 3 minutes.

® **Hiroshima Kokusai Kaigijo (International Conference Center Hiroshima), Phoenix Hall 広島国際会議場フェニックスホール**

(1-5 Nakajima-cho, Naka-ku, Hiroshima Tel. 082-242-7777)

† Get on a Hiroshima Bus bound for Yoshijima and get off at Heiwa Kinenkoen (平和記念公園).
† From Chuden-mae (中電前) or Genbaku Dome-mae (原爆ドーム前) Streetcar Stop, walking time to destination is 5 minutes.

® **Hiroshima Club Quattro 広島クラブクアトロ**

(10-1 Hondori, Naka-ku, Hiroshima (Hiroshima PARCO Hon-kan 10F) Tel. 082-542-2280)

† From Hatchobori (八丁堀) Streetcar Stop, walking time to destination is 5 minutes.

® **Hiroshima Green Arena 広島グリーンアリーナ**

(4-1 Moto-machi, Naka-ku, Hiroshima Tel. 082-228-1111)

† From Kamiya-cho-nishi (紙屋町西) or Kamiya-cho-higashi (紙屋町東) Streetcar Stop, walking time to destination is 5 minutes.

® **Hiroshima Sun Plaza 広島サンプラザ**

(3-1-1 Shoko Center, Nishi-ku, Hiroshima Tel. 082-278-5000)

† Take a train or streetcar to Miyajima and get off at JR Shin-inokuchi (新井口) Station (JR Sanyo Line) or Shoko Center-iriguchi (商工センター入り口) Streetcar Stops (Hiroden Miyajima Line). Walking time to destination is 5 minutes.

® **Elisabeth University of Music エリザベト音楽大学**

(4-15 Nobori-machi, Naka-ku, Hiroshima Tel. 082-221-0918)

† From Kanayama-cho (銀山町) or Jogakuin-mae (女学院前) Streetcar Stop, walking time to destination is 10 minutes.

® **Higashi Kumin Bunka Center 東区民文化センター**

(10-31 Higashi-kaniya-cho, Higashi-ku, Hiroshima Tel. 082-264-5551)

† From the Shinkansen Exit of the JR Hiroshima (広島) Station, walking time to destination is 10 minutes.

Please feel free to contact the International Exchange Lounge at 082-247-9715.

E-mail: golounge@pcf.city.hiroshima.jp

July 2018

® **Nishi Kumin Bunka Center 西区民文化センター**

(6-1 Yokogawa Shin-machi, Nishi-ku, Hiroshima Tel. 082-234-1960)

† From JR Yokogawa (横川) Station, walking time to destination is 5 minutes.

® **Asaminami Kumin Bunka Center 安佐南区民文化センター**

(22-17 Nakasuji 1-chome, Asaminami-ku, Hiroshima Tel. 082-879-3060)

† From *Astramline* Nakasuji (中筋) Station, walking time to destination is 5 minutes.

® **Saeki Kumin Bunka Center 佐伯区民文化センター**

(6-1-10 Itsukaichi-chuo, Saeki-ku, Hiroshima Tel. 082-921-7550)

† From Hiroshima Bus Center (*Sogo* Hiroshima, 3F), take a bus to Yakushigaoka-danchi (薬師が丘団地), Shikigaoka-danchi (四季が丘団地), Higashi-kannon-dai-danchi (東観音台団地) or Ajinadai-kita (阿品台北) and get off at Saeki-kumin Bunka Center-mae (佐伯区民文化センター前). Walking time to destination is 1 minute.

® **Aki Kumin Bunka Center 安芸区民文化センター**

(2-16 Funakoshi-minami 3-chome, Aki-ku, Hiroshima Tel. 082-824-1330)

† From JR Kaitaichi (海田市) Station (JR Sanyo Line), walking time to destination is 5 minutes.

® **Blue Live Hiroshima ブルーライブ広島**

(3-12-69 Ujina Kaigan, Minami-ku, Hiroshima Tel. 082-250-5522)

† Take a streetcar for Hiroshima-ko (No. 1, 3 or 5) and get off at Kaigan-dori (海岸通). Walking time to destination is 5 minutes.

® **lifeone221 hall lifeone221 ホール**

(2-2-1 Itsukaichi-chuo, Saeki-ku, Hiroshima-shi Tel.082-922-0028)

† Take a bus from JR Itsukaichi (五日市) Station (north exit) and get off at Itsukaichi-chuo 2-chome (五日市中央二丁目). Walking time to destination is 5 minutes.

® **Hamamatsu Piano-sha 浜松ピアノ社**

(5-1 Hondori, Naka-ku, Hiroshima Tel. 082-247-0006)

† From Hondori (本通) Streetcar Stop, walking time to destination is 5 minutes.

® **Hiroshima Nagarekawa Church 広島流川協会**

(8-30 Kami-nobori-cho, Naka-ku, Hiroshima Tel. 082-221-1813)

† From Jogakuin-mae (女学院前) or Shukkeien-mae (縮景園前) Streetcar Stop, walking time to destination is 5 minutes.

® **Jodoshinshu Honganji-ha Hiroshima Betsuin 浄土真宗本願寺派広島別院**

(1-19 Tera-machi, Naka-ku, Hiroshima Tel. 082-231-0302)

† Get off at Betsuin-mae (別院前) Streetcar Stop.

® **Hatsukaichi Bunka Hall Sakurapia はつかいち文化ホールさくらびあ**

(1-11-1 Shimo-hera, Hatsukaichi City Tel. 0829-20-0111)

† Take a train on the JR Sanyo Line bound for Iwakuni and get off at JR Miyauchi Kushido (宮内串戸) Station. Walking time to destination is 15 minutes.

† Take a streetcar on the Hiroden Miyajima Line and get off at Hatsukaichi Shiyakusho-mae (廿日市役所前). Walking time to destination is 8 minutes.

® **Kure City Bunka Hall 呉市文化ホール**

(3-10-1 Chuo, Kure City Tel. 0823-25-7878)

† From JR Kure (呉) Station (JR Kure Line), walking time to destination is 7 minutes.



Please feel free to contact the International Exchange Lounge at 082-247-9715.

E-mail: golounge@pcf.city.hiroshima.jp

July 2018



Museums



A: Adults **U: University Students** **H: High School Students**
J: Junior High School Students **E: Elementary School Students**
S: Seniors (65 years old and above - Identification showing your date of birth is required.)

² Generally, admission is allowed up to 30 min. prior to closing. ²

Hiroshima Museum of Art

Address: 3-2 Moto-machi, Naka-ku, Hiroshima City
Tel: 082-223-2530

Hours: 9:00 am – 5:00 pm

² Open until 7:00 pm on Fridays during special exhibitions

Closed: Mondays (except during special exhibitions)

URL: <http://www.hiroshima-museum.jp>

Special Exhibition

j **The World of Takashi Yanase**

Period: Saturday, July 14 – Sunday, August 26

Admission Fee:

A -¥1,300 (¥1,100), S-¥1,100,

U&H-¥1,000 (¥800), J&E-¥600 (¥400)

² Advance ticket prices shown in ().

Collection Exhibition

j **Modern European Paintings**

Period: Year-round

Hiroshima City Museum of Contemporary Art

Address: 1-1 Hijiyama Koen, Minami-ku, Hiroshima City
Tel: 082-264-1121

Hours: 10:00 am – 5:00 pm

Closed: Mondays (except national holiday), July 17 & August 7

URL: <http://www.hcmca.cf.city.hiroshima.jp/>

Special Exhibition

j **Modern Art Revisited: from the collection of Fukuoka Art Museum**

Period: Saturday, June 2 – Sunday, August 26

Admission Fee: A-¥1,200 (¥1,000), U-¥900

(¥700), S&H-¥600 (¥500), J & under-Free

² Advance ticket prices shown in ().

Collection Exhibition

Admission Fee: A-¥360, U-¥270, S&H-¥170,

J & under- Free

² Holders of special exhibition admission tickets are also entitled to view the collection exhibition

j **2018 – 2: Collection Highlights & Special Feature: The Century with Mushroom Clouds / Prayer**

Period:

Saturday, June 30 – Sunday, October 21

Open Program (Free admission)

j **Summer Open Lab: New Antique**

Period:

Saturday, July 14 – Monday, September 17

Video Art Program (Free admission)

j **A Window to the World**

Period: Year-round

Hiroshima MOCA Monthly Workshop

\$ This is an art program in which the museum selects one particular material and visitors are free to make anything with it.

Reservations are not required. You can join the workshop on the event day of.

Date: Sunday, July 22, August 19 & September 30

Time: j 10:00 am – noon

k 2:00 pm – 4:00 pm

Participation Fee: Free

Hiroshima Prefectural Art Museum

Address: 2-22 Kaminobori-cho, Naka-ku, Hiroshima City

Tel: 082-221-6246

Hours: 9:00 am – 5:00 pm

² Open until 8:00 pm on Fridays (Apr. – Oct.)

² Open until 7:00 pm on Fridays (Nov. – Mar.)

Closed: July 7

URL: <http://www.hpam.jp/>

Special Exhibitions

j **The 6th NEW KENBITEN: Annual Competition of Art in Hiroshima Prefecture**

Period: Saturday, June 23 – Sunday, July 8

Admission Fee: A-¥510 (¥410), U&H-¥310 (¥250), J&E-¥100 (¥80)

² Advance ticket prices shown in ().

Please feel free to contact the International Exchange Lounge at 082-247-9715.

E-mail: golounge@pcf.city.hiroshima.jp

July 2018

J KENBITEN is the publicly sponsored exhibition encouraging the prefectural citizens' creative activities as well as providing opportunities for application.

i Ghibli Expo – From Nausicaä to Marnie –

Period:

Saturday, July 21 – Monday, September 24

Admission Fee:

A-¥1,400 (¥1,200), U&H-¥1,000 (¥800),

J&E-¥600 (¥400)

² Advance ticket prices shown in ()

Collection Exhibition

Admission Fee (all exhibitions):

A-¥510, U-¥310, H & under-Free

Holders of special exhibition admission tickets are also entitled to view the Museum's Collection exhibits.

i Summer Museum: A Trip to the World of Fantasy – Setsuji Wadaka, Art Crafts of Central Asia –

Period: Wednesday, July 4 –

Sunday, September 9

Kure Municipal Museum of Art

Address: Irifuneyama Koen, Saiwai-cho, Kure City

Tel: 0823-25-2007

Hours: 10:00 am – 5:00 pm

Closed: Tuesdays (except national holidays)

URL: <http://kure-bi.jp/>



Collection Exhibition

i Nature Paintings

Period: Friday, June 1 – Monday, July 16

Admission Fee: A&U-¥300, H-¥180,

J&E-¥120

Fukuyama Museum of Art

Address: 2-4-3 Nishi-machi, Fukuyama City

Tel: 084-932-2345

Hours: 9:30 am – 5:00 pm

² Open until 7 pm on August 31,

September 1, 7 & 8

Closed: Mondays (except national holidays)

HP: <http://www.city.fukuyama.hiroshima.jp/site/fukuyama-museum/>

Special Exhibition

i Magical Art Museum: Art in Wonderland

Period: Saturday, July 14 – Sunday, September 9

Admission Fee: A&U-¥1,000

H & under-Free

N A ticket to see both the special exhibition and the art collection is available for ¥1,100.

Collection Exhibition

Admission Fee: A&U-¥300, H & under-Free

i Summer Exhibition: Portraits

Period: Wednesday, June 20 – Monday, September 24

Onomichi City Museum of Art

Address: 17-19 Nishitsuchido-cho, Onomichi City
(Inside Senkoji Park)

Tel: 0848-23-2281

Hours: 9:00 am – 5:00 pm

Closed: Mondays except national holidays

URL: <http://www7.city.onomichi.hiroshima.jp/>

Special Exhibition

i Museum Collections

Period: Saturday, June 30 – Sunday, July 29

Admission Fee: A-¥300, U&H-¥200,

J & under-¥Free

i TATSUMI ORIMOTO – Past & Now

Period: Saturday, August 4 –

Sunday, September 16

Admission Fee: A-¥800, U&H-¥550,

J & under-¥Free

Okuda Genso Sayume Art Museum

Address: 453-6 Higashi Sakeya-machi, Miyoshi City

Tel: 0824-65-0010

Hours: 9:30 am – 5:00 pm

Closed: Wednesday, July 11

URL: <http://www.genso-sayume.jp>

Special Exhibition

i Paddington Bear

Period: Friday, July 6 – Sunday, August 26

Admission Fee:

A-¥1,000 (¥900), Tickets for couple-

¥1,800 U&H-¥500 (¥400), J & under-Free

² Advance ticket prices shown in ().

Fudenosato Kobo

Address: 5-17-1 Nakamizo, Kumano-cho, Aki-gun

Tel: 082-855-3010

Hours: 10:00 am – 5:00 pm

Closed: Mondays (except national holidays)

URL: <http://fude.or.jp/jp/>

Special Exhibition

i ART TAKESHI

Period: Saturday, July 14 –

Sunday, September 9

Admission Fee: A&U-¥1,000, H,J&E-¥250



Please feel free to contact the International Exchange Lounge at 082-247-9715.

E-mail: golounge@pcf.city.hiroshima.jp

July 2018

Mitsukoshi Department Store

Address: 5-1 Ebisu-cho, Naka-ku, Hiroshima City
Tel: 082-242-3111
Hours: 10:30 am – 7:30 pm
URL: <http://www.mitsukoshi.co.jp/>

Special Exhibition

i Snoopy & Science Art Exhibition:

“Snoopy Fantaration”

Period: Tuesday, July 24 – Sunday, August 5

Admission Fee:

Advance: A&U-¥700, H-¥500,
J-¥400, E-¥300

At the door: A&U-¥1,000, H-¥700,
J-¥500, E-¥300

² Advance tickets will be sold at Ticket PIA,
Lawson, e+, Hiroshima Mitsukoshi 6F until
July 23.

Hatsukaichi Art Gallery

Address: 1-11-1 Shimohera, Hatsukaichi City
(inside Hatsukaichi Bunka Hall Sakurapia)
Tel: 0829-20-0222
Hours: 10:00 am – 6:00 pm
Closed: Mondays (except national holidays)

Special Exhibition

i The 22nd Peace Art Exhibition:

Picture Book Illustrations

Period: Thursday, July 26 – Sunday,
September 2

Admission Fee: Free admission



Please feel free to contact the International Exchange Lounge at 082-247-9715.

E-mail: golounge@pcf.city.hiroshima.jp

July 2018

Hiroshima Toyo Carp Schedule 2018

The Toyo Carp (Hiroshima's professional baseball team) plays about 60 games at the MAZDA Zoom-Zoom Stadium Hiroshima every year.

GAME SCHEDULE Date / Starting Time / Game << : Optional extra day

JULY

Tuesday, 3rd, 6:00 pm / vs. Tokyo Yakult Swallows
 Wednesday, 4th, 6:00 pm / vs. Tokyo Yakult Swallows
 Thursday, 5th, 6:00 pm / vs. Tokyo Yakult Swallows
 Monday, 9th, 6:00 pm / vs. Hanshin Tigers
 Tuesday, 10th, 6:00 pm / vs. Hanshin Tigers
 Wednesday, 11th, 6:00 pm / vs. Hanshin Tigers
 Friday, 20th, 6:00 pm / vs. Yomiuri Giants
 Saturday, 21st, 6:00 pm / vs. Yomiuri Giants
 Sunday, 22nd, 6:00 pm / vs. Yomiuri Giants
 Friday, 27th, 6:00 pm / vs. Yokohama DeNA Baystars
 Saturday, 28th, 6:00 pm / vs. Yokohama DeNA Baystars
 Sunday, 29th, 6:00 pm / vs. Yokohama DeNA Baystars

AUGUST

Tuesday, 7th, 6:00 pm / vs. Chunichi Dragons
 Wednesday, 8th, 6:00 pm / vs. Chunichi Dragons
 Thursday, 9th, 6:00 pm / vs. Chunichi Dragons
 Friday, 10th, 6:00 pm / vs. Yomiuri Giants
 Saturday, 11th, 6:00 pm / vs. Yomiuri Giants
 Sunday, 12th, 6:00 pm / vs. Yomiuri Giants
 Tuesday, 21st, 6:00 pm / vs. Tokyo Yakult Swallows
 Wednesday, 22nd, 6:00 pm / vs. Tokyo Yakult Swallows
 Thursday, 23rd, 6:00 pm / vs. Tokyo Yakult Swallows
 Friday, 24th, 6:00 pm / vs. Chunichi Dragons
 Saturday, 25th, 6:00 pm / vs. Chunichi Dragons
 Sunday, 26th, 6:00 pm / vs. Chunichi Dragons

SEPTEMBER

Tuesday, 4th, 6:00 pm / vs. Hanshin Tigers
 Wednesday, 5th, 6:00 pm / vs. Hanshin Tigers
 Thursday, 6th, 6:00 pm / vs. Hanshin Tigers
 Tuesday, 11th, 6:00 pm / vs. Yokohama DeNA Baystars
 Wednesday, 12th, 6:00 pm / vs. Yokohama DeNA Baystars
 Thursday, 13th, 6:00 pm / vs. Yokohama DeNA Baystars
 << Friday, 14th, 6:00 pm / vs. Chunichi Dragons
 Saturday, 15th, 1:30 pm / vs. Chunichi Dragons
 << Friday, 21st, 6:00 pm / vs. Hanshin Tigers
 Saturday, 22nd, 1:30 pm / vs. Hanshin Tigers
 Sunday, 23rd, 6:00 pm / vs. Yokohama DeNA Baystars
 Monday, 24th, 1:30 pm / vs. Yokohama DeNA Baystars



TICKET OFFICES

w MAZDA Zoom-Zoom Stadium Hiroshima

Tickets can be purchased at the ticket booths at the entrances of the stadium (closed on August 6).

Booth Opening Times

11:30 am (days with night games) / 11:00 am (days with day games)

11:00 am – 4:00 pm (days when there are no games)

w CARPIO (6-7 Hacho-bori, Naka-ku)

OPEN: 10:00 am – 4:00 pm

CLOSED: No fixed times

TEL: 227-2222

w Convenience Stores

Tickets are available at convenience stores such as Lawson, Seven-Eleven, FamilyMart and Sunkus.

ACCESS

MAZDA Zoom-Zoom Stadium Hiroshima:

From JR Hiroshima Station, walking time to the stadium is 10 minutes.

INQUIRIES

Hiroshima Toyo CARP Tel. (082) 223-2141 Fax. (082) 502-1189 URL: www.carp.co.jp/

Please feel free to contact the International Exchange Lounge at 082-247-9715.

E-mail: golounge@pcf.city.hiroshima.jp

July 2018

Sanfrecce Hiroshima FC Schedule 2018

GAME SCHEDULE Date / Kick Off / Game / Venue / Ticket Sales

2018 J League

- Wednesday, July 18 / 7:00 pm / vs. Gamba Osaka / EDION Stadium Hiroshima / Now on sale
- Saturday, July 28 / 7:00 pm / vs. Urawa Red Diamonds / EDION Stadium Hiroshima / Now on sale
- Sunday, August 5 / 7:00 pm / vs. Shonan Bellemare / EDION Stadium Hiroshima / From Saturday, July 7
- Saturday, August 11 / 7:00 pm / vs. V-Varen Nagasaki / EDION Stadium Hiroshima / From Saturday, July 7
- Sunday, August 19 / 7:00 pm / vs. Kawasaki Frontale / EDION Stadium Hiroshima / From Saturday, July 7
- Saturday, September 1 or Sun., September 2 / TBC / vs. Kashima Antlers / EDION Stadium Hiroshima / From Saturday, August 4
- Saturday, September 22 or Sun., September 23 / TBC / vs. F. C. Tokyo / EDION Stadium Hiroshima / From Saturday, August 4
- Saturday, October 6 or Sun., October 7 / TBC / vs. Kashiwa Reysol / EDION Stadium Hiroshima / From Saturday, September 1
- Saturday, November 10 / TBC / vs. Vegalta Sendai / EDION Stadium Hiroshima / From Saturday, October 6
- Saturday, November 24 / TBC / vs. Nagoya Grampus / EDION Stadium Hiroshima / From Saturday, October 6

TICKETS Seats / Advance Tickets / At the Door

- w Reserved Seats SS / ¥5,300 / ¥5,900
- w Reserved Seats SA / ¥3,700 / ¥4,300
- w Unreserved Seats for Adults / ¥2,600 / ¥3,200
- w Unreserved Seats for Students (High School Students and under) / ¥1,000 / ¥1,500

ACCESS

w EDION Stadium Hiroshima (Hiroshima Big Arch)

Take the *Astramline* bound for *Koiki-koen-mae* (広域公園前) and get off at the last station, *Koiki-koen-mae* (広域公園前).

From *Hondori* Station: One way fare - ¥480 Travel time - 35 min.

TICKET OFFICES

- w Sanfrecce Hiroshima Official Shop V-POINT (Shareo, underground shopping mall) / Tel. 248-3317 / Mon. – Sat.: 11 am – 9 pm; Sun. & national holidays: 10 am – 8 pm / Open every day
- w EDION Play Guide (SUNMALL, 1F)
- w Fukuya (Hiroshima Station) (7F)
- w Alpark Tenmaya (3F)
- w Convenience Stores (FamilyMart, Seven-Eleven, CircleKSunkus and Lawson)

INQUIRIES: Sanfrecce HIROSHIMA Tel. 233-3233 URL: www.sanfrecce.co.jp



Please feel free to contact the International Exchange Lounge at 082-247-9715.

E-mail: golounge@pcf.city.hiroshima.jp

July 2018

Seasonal Event Information

July 2018

Ⓔ Event schedules are subject to change. Please contact event organizers before you go.

Events Held in Hiroshima City

Wednesdays between April 4 and December 26, 2018

✓ July 4, 11, 18 & 25; August 1, 8, 15, 22 & 29

Hiroshima Kagura ひろしまけんみんぶんか 広島県民文化センター「ひろしまがくら 広島神楽」ていきこうえん 定期公演

TIME: 7:00 pm – 8:45 pm (The venue will open at 6:00 pm.)

PLACE: Hiroshima Kenmin Bunka Center, Ote-machi, Naka-ku (located near Hondori Shopping Street)

ACCESS: From Kamiya-cho-nishi or Hondori Streetcar Stops, walking time to destination is 3 minutes.

TICKETS: ¥1,000 ² All non-reserved seats

² Tickets will be sold from 5:00 pm on the day of performance at the center.
There are no advance tickets.

INQUIRIES: Hiroshima Kenmin Bunka Center 082-245-2311



Sunday, June 10 – Saturday, July 7

Ajisai (Hydrangea) Festival at Kannon-ji Temple かんのんじ 観音寺 まつ あじさい祭り

TIME: 8:30 am – 5:00 pm { Ajisai Festival: From 10:00 am onward on June 10

PLACE: Kannon-ji Temple, Saeki-ku

ACCESS: Get on a bus bound for Higashi-kannondai Danchi from Rakurakuen Streetcar Stop or JR Itsukaichi Station (JR Sanyo Line) and get off at Kannondai Iriguchi. Walking time to destination is 5 minutes.

INQUIRIES: Kannon-ji Temple 082-924-1340

© 5,000 hydrangeas of 400 varieties will bloom from the middle of June to the beginning of July at Kannon-ji Temple.

© On June 10, there will be an opening to public of *nehanzu* (a picture of Buddha entering Nirvana).
On June 17, "Food, Music and Miscellaneous Goods Market" will be held from 10 am to 3 pm.
Ajisai Exhibition and *Furin*, a wind-bell festival will also be held during the event period.

Sunday, July 1 & 15

Hiroshima Minato Marché ひろしまみなとマルシェ

TIME: 8:00 am – 2:00 pm

PLACE: Open Space between East and West Terminal of Hiroshima Port, Minami-ku

ACCESS: Take the No. 1, 3 or 5 streetcar bound for Hiroshima Port and get off at the last stop, Hiroshima Port.

INQUIRIES: Hiroshima Minato Marché Office 082-255-6646

© You can buy and taste locally-grown fresh vegetables and other food products at the market.

Sunday, July 8

Tanabata (star festival) Tea Ceremony たなばたちやかい 七夕茶会

TIME: 9:00 am – 2:00 pm

PLACE: Shukkeien Garden

ACCESS: From Shukkeien-mae Streetcar Stop (Hiroden Hakushima Line), walking time to destination is 5 minutes.

Please feel free to contact the International Exchange Lounge at 082-247-9715.

E-mail: golounge@pcf.city.hiroshima.jp

July 2018

FEE FOR THE TEA CEREMONY:¥800 at *Seifukan* / ¥700 in front of the Prefectural Museum² Admission fee for the garden is also required.

Adults-¥260, University & High school students-¥150
Junior high & Elementary school students- ¥100

INQUIRIES: Shukkeien Garden 082-221-3620© *Tanabata* is a star festival usually held on July 7 each year.**Thursday, July 19 – Wednesday, August 29****Pixar Adventure “What If”** ピクサーアドベンチャー「もしも」から はじ まる、ぼうけん **冒険の**せかい
世界**TIME:** 10:00 am – 6:00 pm (entry allowed up to 5:30 pm.)**PLACE:** NTT CRED Hall, Motomachi CRED Pacela 11F, Motomachi, Naka-ku**ACCESS:** • Get off at the *Astramline* Kencho-mae Station.

, Get off at Kamiya-cho-higashi or Kamiya-cho-nishi Streetcar Stop.

TICKETS: w Advance: Junior high school students and above-¥1,000

4 years old – Elementary school students-¥500

w At the door: Junior high school students and above-¥1,200

4 years old – Elementary school students-¥600

² Admission free for children who are 3 years old and under² Children under elementary school student age should be accompanied by a guardian.**INQUIRIES:** TSS Office 082-253-1010 (weekdays, 10 am – 6 pm)**Saturday, July 21 – Sunday, September 2****Amphibian & Reptile Exhibition: Wonderful World of Frogs, Snakes and Lizards****カエルとヘビ・トカゲのふしぎな** せかい **世界** りょうせいの **両生類** ちゅうるいてん **・は虫類展****TIME:** 11:00 am – 6:00 pm (entry allowed up to 5:30 pm.)**PLACE:** Hiroshima Marina Hop, Mermaid Space, Kanon-shin-machi, Nishi-ku**ACCESS:** Take the No. 3 (from JR Hiroshima Station) or the No. 8 (from JR Yokogawa Station) bus bound for Kanon Marina Hop / Hiroshima Heliport and get off at the last stop, Kanon Marina Hop.**TICKETS:** w Advance: 18 years old and above: ¥800

6 years old – 17 years old: ¥600

3 years old – 5 years old: ¥400

w At the door: 18 years old and above: ¥1,000

6 years old – 17 years old: ¥800

3 years old – 5 years old: ¥600

² Admission free for children who are 2 years old and under² Advance tickets are sold at convenience stores (Seven-Eleven, Lawson and FamilyMart), EDION Hiroshima (SUNMALL, 1F), Fukuya Department Store (Hiroshima Station) and Alpark Tenmaya.**INQUIRIES:** TSS Office 082-253-1010 (weekdays, 10 am – 6 pm)**Thursday, July 26 & Friday, July 27****Sumiyoshisan Festival** すみよしさん**TIME:** No specific starting time. Most people come in the evening.**PLACE:** Sumiyoshi Shrine, Sumiyoshi-cho, Naka-ku**ACCESS:** j Take the No. 24 bus and get off at Sumiyoshi-cho. Walking time to destination is 5 minutes.

k Take the No. 3 or 6 bus and get off at Kako-machi. Walking time to destination is 3 minutes.

INQUIRIES: Sumiyoshi Shrine 082-241-0104

Please feel free to contact the International Exchange Lounge at 082-247-9715.

E-mail: golounge@pcf.city.hiroshima.jp

July 2018

© Fireworks will be set off from 8:00 pm on both days. An ancient-style of boat will be in the river and *kagura* performances will also be held.

Saturday, July 28

2018 Hiroshima *Minato* Fireworks Festival ひろしま 2018広島 ゆめ はなびたいかい みなと 夢 花火大会

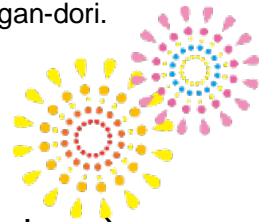
TIME: 8:00 pm – 9:00 pm ® Opening event: 7:00 pm – 7:40 pm

PLACE: Hiroshima Port 10,000 ton Class Berth, Minami-ku

ACCESS: Take a streetcar bound for Hiroshima-ko (Hiroden Ujina Line) and get off at Kaigan-dori.
Walking time to destination is 15 minutes.

INQUIRIES: Hiroshima *Matsuri* Committee 082-554-1813 (weekdays, 9 am – 5:45 pm)

© The fireworks will be canceled or postponed if it rains heavily on the 28th.



Saturday, July 28

***Nagoshi* Festival at Nagatsuka Shrine & Taiko (traditional Japanese drums)**

Performance 2018 ながつかじんじやなごしさい 長束神社夏越祭 ほうのうこうえん 奉納公演 2018

TIME: ® Ritual: From 6:00 pm onward ® *Taiko* performance: From 7:00 pm onward

PLACE: Nagatsuka Shrine, Asaminami-ku

ACCESS: From Aki-nagatsuka Station (JR Kabe Line), walking time to destination is 10 minutes.

FEE: Free

INQUIRIES: *Taiko Honpo Kaburaya* 082-509-0320 HP: <http://kaburaya.net>

Wednesday, August 1

Memorial Service for the Atomic Bomb Victims at Shukkeien Garden

げんばくぎせいしやいれいくようしき
原爆犠牲者慰霊供養式

PLACE: Shukkeien Garden

ACCESS: From Shukkeien-mae Streetcar Stop, walking time to destination is 5 minutes.

FEE: Admission fee for the garden (Adults-¥260, University & High school students-¥150)
(Junior high & Elementary school students-¥100)

INQUIRIES: Shukkeien Garden 082-221-3620



Monday, August 6

The 73rd Peace Memorial Ceremony だい かいへいわきねんしきてん 第73回平和記念式典

TIME: 8:00 am – 8:45 am

PLACE: In front of the Cenotaph for the A-Bomb Victims, Peace Memorial Park

INQUIRIES: *Shimin Katsudo Suishin Ka* (Citizens Activities Promotion Division, the City of Hiroshima)
082-504-2103 E-mail: katsudo@city.hiroshima.lg.jp

© On August 6, at 8:15 am, at the sound of a bell rung by a representative from the bereaved families and one youth representative, a moment of silence is observed for the deceased. At that moment, factory sirens as well as temple and church bells are rung throughout the city, and Hiroshima is deeply wrapped in prayer. The Mayor of Hiroshima delivers a peace declaration addressed to the whole world at the ceremony. On this day, people recall what happened on August 6, 1945, and in their prayers, ponder the meaning of peace.

✓ Now Accepting Seat Reservation from Non-Japanese Speakers for the 2018 Peace Memorial Ceremony

The International Relations Division of the City of Hiroshima is now accepting applications from non-Japanese speakers for seats and simultaneous interpretation receivers (English Only) for this year's Peace Memorial Ceremony.

<TO APPLY>

Please fill out a Reservation Form and List of Attendees, and send them back to the International Relations Division at kokusai@hiroshima.lg.jp. Please write the names of all participants on the

Please feel free to contact the International Exchange Lounge at 082-247-9715.

E-mail: golounge@pcf.city.hiroshima.jp

July 2018

Attendees sheet. You may use a second sheet if you need more space. The International Relations Division will contact you regarding whether or not your reservation request could be granted. You can download the reservation form and list of attendees from the Hiroshima City website (<http://www.city.hiroshima.lg.jp/www/contents/1469436635910/index.html>).

² Seats are limited. Once the seating quota has been reached, we will stop accepting applications. Last year we received an influx of applications. If you wish to be seated during the Ceremony, please apply early.

Seating is also available in the Unassigned Seating Area, however, as seating is open to anyone on a first come basis, you are encouraged to arrive early. Reservations are not being accepted for this seating area. In previous years, seats were mostly filled by 7:00 am. Please note that the International Conference Center Hiroshima, which is located in Peace Memorial Park, will be open to the public and will have live footage of the Ceremony in Phoenix Hall and Himawari Room.

Please see the Hiroshima City website (<http://www.city.hiroshima.lg.jp/www/contents/1469436635910/index.html>) or contact the International Relations Division of the City of Hiroshima (Tel: 082-504-2106 / e-mail: kokusai@city.hiroshima.lg.jp) for more information.

Monday, August 6

Floating Paper Lanterns ピースメッセージとうろう^{なが}流し

TIME: 6:00 pm – 9:00 pm

PLACE: ̳ Chuo Area: South Side of the Atomic Bomb Dome

̳ Fukushima Area: South Side of the Shin-koi-bashi Bridge (east side)

̳ Koi Area: South Side of the Shin-koi-bashi Bridge (west side)

ACCESS: Get off at Genbaku Dome-mae Streetcar Stop.

INQUIRIES: *Toro-nagashi* Executive Committee 082-245-1448

© Paper lanterns will be floated down the river to console the souls of the deceased. Lanterns (¥600) will be sold at four places inside the Peace Memorial Park from 6 am to 9 pm on the day.

Friday, August 10 – Thursday, August 16

Tomica Land in Hiroshima トミカ^{はく}博 in Hiroshima

TIME: 10:00 am – 4:00 pm ² Entry allowed up to 3:30 pm.

PLACE: *Hiroshima Kenritsu Hiroshima Sangyo Kaikan* (Hiroshima Prefectural Industrial Exhibition Hall), West Exhibition Hall, Hijiyama, Minami-ku

ACCESS: From Minami Kuyakusho-mae Streetcar Stop, walking time to destination is 1 minute.

TICKETS: w Advance: Junior high school students and above-¥900

3 years old – Elementary school students-¥700

w At the door: Junior high school students and above-¥1,000

3 years old – Elementary school students-¥800

² Advance “guardian and child” family tickets (one adult and one child) will be sold for ¥1,500 at Seven-Eleven between May 16 (from 10 am) and June 8 (until 11:59 pm).

² Admission free for children who are 2 years old and under

INQUIRIES: RCC Broadcasting 082-222-1133 (weekdays, 10 am – 5 pm)

© “Tomica” are die-cast toy mini-cars for children produced by a Japanese company, Takara Tomy.

Tomica has remained a long-selling product since it appeared for the first time in 1970.

Tomica Land is a special play land where you can enjoy the whole world of “Tomica”.



Please feel free to c

at 082-247-9715.

E-mail: goiounge@pcr.city.hiroshima.jp

July 2018



Thursday, August 23 – Monday, August 27

The 17th International Animation Festival Hiroshima 2018

だい かいひろしまこくさい
第17回 広島国際アニメーションフェスティバル

VENUE: JMS Aster Plaza, Kako-machi, Naka-ku

ACCESS: Take the No. 24 bus and get off at Kako-machi. Walking time to destination is 2 minutes.

TICKETS: J Free admission for elementary school students and under.

	Adults	¥1,000	¥1,200
One Program Ticket	University students	¥800	¥1,000
	Senior high & junior high school students	¥600	¥700
	Adults	¥2,500	¥3,000
One Day Pass	University students	¥2,000	¥2,400
	Senior high & junior high school students	¥1,500	¥1,800
	Adults	¥10,000	¥12,000
All Program Pass	University students	¥8,000	¥10,000
	Senior high & junior high school students	¥6,000	¥7,000
	Group Discount (Over 15 tickets)		10% discount

<NOTES>

- ² “University students” includes university (college) students, junior college students and special technical school students who are 18 years old and above.
- ² Elementary school students and under will be free of charge but should be accompanied by their guardians.
- ² Children who are 2 years old and under cannot enter the competition program.
- ² Advance tickets are available at major ticket offices in Hiroshima city:
 EDION Hiroshima (SUNMALL, 1F), Fukuya Department Store (Hiroshima Station Square Store), Alpark Tenmaya, Chuo Shoten Bookstore (inside SUNMALL), Hiroshima Yume Plaza, Movie Theaters (Hatchoza & Salon Cinema), JMS Aster Plaza, Kumin Bunka Centers (Ward Community Cultural Centers), Hiroshima-jo (Hiroshima Castle), Kyodo Shiryō Kan (Hiroshima City Museum of History and Traditional Crafts), 5-Days Kodomo Bunka Kagaku Kan (Children’s Museum of Culture and Science), Ebayama Kisho Kan (Hiroshima City Ebayama Museum of Meteorology), Eizo Bunka Library (Hiroshima City Cinematographic and Audio-Visual Library) & Hiroshima-shi Gendai Bijutsu Kan (Hiroshima City Museum of Contemporary Art)

INQUIRIES: International Animation Festival Organizing Committee (inside Aster Plaza)
 082-245-0245 URL: <http://hiroanim.org/>

Saturday, October 27

2018 Autumn Sumo Tour in Hiroshima (Ozumo Aki Basho)

おおずもうあきばしょ
大相撲安芸場所

TIME: 8:00 am – 3:00 pm

Please feel free to contact the International Exchange Lounge at 082-247-9715.

E-mail: golounge@pcf.city.hiroshima.jp

July 2018

VENUE: Hiroshima Green Arena, Naka-ku

ACCESS: From Kamiya-cho-nishi Streetcar Stop, walking time to destination is 3 minutes.

TICKETS:

1st Floor

i "Tamari" Seats (ringside)

S - ¥14,000/person A - ¥13,000/person B - ¥12,000/person

C - ¥11,000/person D - ¥10,000/person E - ¥9,000/person

4 people (6 E seats) - ¥48,000

i Chair Seats

F - ¥10,000/person G - ¥8,000/person H - ¥12,500/person I - ¥12,000/person

Wheelchair Seating: ¥19,000 (two seats)

2nd Floor

i Chair Seats

J - ¥8,000/person K - ¥7,000/person L - ¥5,000/person M - ¥3,000/person

Wheelchair Seating: ¥13,000 (two seats)

<Notice>

² Seats with " ": You can take a special sumo cushion home as a souvenir.

² Wheelchair seating is for those in a wheelchair and his/her attendant.

HOW TO ORDER TICKETS:

Ticket orders will be accepted online. Please see the website (<http://www.sumoaki-hiroshima.com/en>) for more information.

² You can order a *bento* (lunch box; ¥2,000) with tea as well.

² You may not be allowed to bring any food or drink to the venue other than this *bento*.

INQUIRIES: Ozumo Aki Basho Office 082-292-5559 (weekdays, 10 am – 5 pm)

E-mail: sumoaki@ppad.co.jp HP: <http://www.sumoaki-hiroshima.com/>

✓ **Official ticket distributor for non-Japanese speakers** ✓

JP Educational 082-224-3816 E-mail: info@jpeducational.com

Events Held on Miyajima

Until Friday, November 30

Zero Higashida Sculpture Exhibition

ゼロ・ヒガシダ^{てん}展

TIME: 8:00 am – 5:00 pm

PLACE: Inside Daishoin Temple ground, Miyajima

ACCESS: Get off at JR Miyajima-guchi Station (JR Sanyo Line) or the Miyajima Streetcar Stop (Hiroden Streetcar Miyajima Line), then take a ferry to Miyajima.

INQUIRIES: Daishoin Temple 0829-44-0111



Friday, June 15

Festival Celebrating the Birth of Kobo-Daishi

こうぼうだいしこうたん^{さい}
弘法大師 降誕 いるは 祭

TIME: From 11:00 am onward

PLACE: Daishoin Temple, Miyajima

ACCESS: Get off at Miyajima-guchi Station (JR Sanyo Line) or get off at the Hiroden Miyajima Stop (Streetcar Miyajima Line), then take a ferry to Miyajima.

INQUIRIES: Daishoin Temple 0829-44-0111

© Kobo-Daishi (A.D. 774 – A.D. 835), also known as Kukai, is a famous Japanese monk, scholar and calligrapher. He is the founder of the Shingon sect of Buddhism.

© *Amacha* tea will be served.

Sunday, June 17

Itsukushima Benzaiten Festival

いつくしまべんざいてんたいさい
厳島弁財天大祭

TIME: 10:00 am – 4:00 pm

PLACE: Daiganji Temple, Miyajima

Please feel free to contact the International Exchange Lounge at 082-247-9715.

E-mail: golounge@pcf.city.hiroshima.jp

July 2018

ACCESS: Get off at JR Miyajima-guchi Station (JR Sanyo Line) or the Miyajima Streetcar Stop (Hiroden Streetcar Miyajima Line), then take a ferry to Miyajima.

INQUIRIES: Daiganji Temple 0829-44-0179

© *Benzaiten* is the deity of water and music. Daiganji Temple's *Benzaiten* is one of the three major *Benzaiten* statues in Japan and is only open to the public once a year on this festival day.

Saturday, July 7

Seven Gods of Fortune Festival しちふくじんじゆふくさい 七福神授福祭

TIME: From 11:00 am onward

PLACE: Daishoin Temple, Miyajima

ACCESS: Get off at JR Miyajima-guchi Station (JR Sanyo Line) or the Miyajima Streetcar Stop (Hiroden Streetcar Miyajima Line), then take a ferry to Miyajima.

INQUIRIES: Daishoin Temple 0829-44-0111

© Buddhist music service in dedication to *Shichifukujin* (Seven Gods of Fortune) will be held.

Tuesday, July 17

Ichitate-sai いちたてさい 市立祭

TIME: From 9:00 am onward

PLACE: Itsukushima Shrine, Miyajima

ACCESS: Get off at JR Miyajima-guchi Station (JR Sanyo Line) or the Miyajima Streetcar Stop (Hiroden Streetcar Miyajima Line), then take a ferry to Miyajima.

FEE: Admission fee for Itsukushima Shrine

(Adults & University students-¥300 High school students-¥200
Junior high & Elementary school students-¥100)

INQUIRIES: Itsukushima Shrine 0829-44-2020

© After the ritual ceremony, *bugaku* (traditional Japanese imperial court dance music) will be performed.

Sunday, July 29

Miyajima Kangen-sai Festival かんげんさい 管絃祭

TIME: From 3:00 pm onward

PLACE: Itsukushima Shrine and other shrines on Miyajima

ACCESS: Get off at JR Miyajima-guchi Station (JR Sanyo Line) or the Miyajima Streetcar Stop (Hiroden Streetcar Miyajima Line), then take a ferry to Miyajima.

FEE: Admission fee for Itsukushima Shrine

(Adults & University students-¥300 High school students-¥200
Junior high school & Elementary school students-¥100)

INQUIRIES: Itsukushima Shrine 0829-44-2020

© The *Kangen-sai* Festival began in the Heian Era (A.D.794 – A.D.1185). *Kangen* is traditional Japanese music played with *San-kan* (three flutes), *San-ko* (three drums) and *San-gen* (three strings). The *Kangen-bune* boat cruises while musicians on-board play this unique music through Otorii Gate to the Jigozen Shrine located on the opposite bank. It then proceeds to Nagahama and Omoto Shrines on Miyajima Island and returns to Itsukushima Shrine. Itsukushima *Kangen-sai* Festival is one of the three largest boat festivals in Japan.

Sunday, July 29

Lantern Parade in Miyajima ぎょうれつ ちょうちん行列

TIME: From 8:00 pm onward

PLACE: Lanterns will be given out for free in front of Nagahama Shrine.

ACCESS: Get off at JR Miyajima-guchi Station (JR Sanyo Line) or the Miyajima Streetcar Stop (Hiroden

Please feel free to contact the International Exchange Lounge at 082-247-9715.

E-mail: golounge@pcf.city.hiroshima.jp

July 2018

Streetcar Miyajima Line), then take a ferry to Miyajima.

INQUIRIES: *Miyajima Kanko Kyokai* (Tourist Association) 0829-44-2011

© This parade uses lanterns to welcome the *Kangen-bune* boat to Nagahama Shrine on its return from Jigozen Shrine. After the boat reaches Nagahama Shrine, participants will parade towards Itsukushima Shrine.

Events Held Outside of Hiroshima City

Friday, June 1 – Monday, September 10

Cormorant Fishing in Miyoshi みよし うかい 三次の鵜飼

TIME: 7:30 pm – 8:30 pm (Excursion will be canceled if it rains heavily.)

² Please come to the reception by 7:00 pm.

PLACE: *Tokaichi Shinsui Koen* (Park), Miyoshi City

ACCESS: From JR Miyoshi Station (JR Geibi Line), walking time to destination is 15 minutes.

PASSENGER FARE:

® Sunday – Thursday: Junior high school students and above-¥3,000
Elementary school students-¥1,500

² Please note that passenger fares are different on Fridays and Saturdays, and reservations are required.

² Reservations will not be accepted on some event days (cormorant fishing festival in June and Miyoshi fireworks festival in August).

RESERVATIONS & INQUIRIES: *Miyoshi City Kanko Kyokai* (Tourist Association)
0824-63-9268

© Fishermen start out at night with lanterns and cormorants on small wooden boats. The birds are trained to catch *Ayu* (sweetfish). Very unique white-colored cormorants (a type of water fowl, usually with black feathers) were donated by Yaan in Szechuan, China, Miyoshi's friendship city, and can be seen only in Miyoshi.

Saturday, July 7

Takehara Tanabata Festival (Star Festival) たなばた たけはら七夕まつり

TIME: 5:00 pm – 9:00 pm

PLACE: Around the shopping street in front of JR Takehara Station, Takehara City

ACCESS: Get off at JR Takehara Station (JR Kure Line).

INQUIRIES: *Takehara Ekimae Shotengai Shinko Kumiai* 0846-22-5542

© *Tanabata* is a star festival usually held on July 7 every year. Stage performances, food kiosks, etc. will be held.



Saturday, July 7

Otebi Festival てびしんじ お手火神事

TIME: From 8:00 pm onward

PLACE: Nunakuma Shrine, Tomo-cho, Fukuyama City

ACCESS: Take a bus from JR Fukuyama Station (JR Sanyo Line) and get off at Tomonoura. Walking time to destination is 10 minutes.

INQUIRIES: Nunakuma Shrine 084-982-2050

© *Otebi* is a fire festival in which men carry three torches weighing about 150kg and offer them to the shrine. This is a traditional festival which has been held since the Kamakura Period (A.D. 1185 – A.D. 1393). This is designated as a Fukuyama City intangible folklore cultural asset.

Please feel free to contact the International Exchange Lounge at 082-247-9715.

E-mail: golounge@pcf.city.hiroshima.jp

July 2018

Sunday, July 8**Innoshima Suigun Festival / Island Festival**いんのしますいぐん しま
因島 水軍まつり・島まつり**TIME:** 9:00 am – 1:00 pm (tentative)**PLACE:** *Innoshima Amenity Koen* (park), *Shimanami Beach* and *Innoshima Suigun Castle*, Innoshima, Onomichi City**ACCESS:** Take a bus bound for Habu-ko (Habu Port) from JR Onomichi Station (JR Sanyo Line) and get off at Innoshima Ohashi. Walking time to destination is 10 minutes.**CONTENT:** *Shima-matsuri* (island festival) parade, dance and *taiko* performances, etc.**INQUIRIES:** Innoshima *Suigun* Festival Executive Committee 0845-26-6212© Innoshima was one of the fortified trading posts of the Murakami *Suigun* which did trade with Asian countries and held power over the sea around Japan between the Muromachi Era (A.D. 1336 – A.D. 1573) and the Age of The Provincial Wars.Innoshima *Suigun* Festival consists of three festivals; *Shima-matsuri* (Island Festival) on July 8, *Umi-matsuri* (Sea Festival) on August 26 and *Hi-matsuri* (Fire Festival) on September 1.**Friday, July 13 – Sunday, July 15****Tenjin-sai Festival**てんじんさい
天神祭**TIME:** w July 13: From 5:00 pm onward w July 14: From 4:00 pm onward w July 15: From 2:00 pm onward**PLACE:** Misode Tenmangu Shrine, Onomichi City**ACCESS:** From Ropeway Sanroku Station, walking time to destination is 2 minutes.

N Ways to get to Ropeway Sanroku Station N

- From JR Onomichi Station (JR Sanyo Line), walking time to destination is 15 minutes.
- Take a bus from JR Onomichi Station and get off at Nagae-guchi.

INQUIRIES: Misode Tenmangu Shrine 0848-37-1889© This is Misode Tenmangu Shrine's summer festival. People carrying *mikoshi*, a portable *shinto* shrine, will go up and down the 55 steps to the shrine.**Friday, July 13 – Sunday, July 15****Gion Matsuri Festival at Susanoo Shrine**ぎおんまつり
祇園祭**SCHEDULE:** w July 13 – Pre-vent w July 14 & 15 – Main events (carrying *mikoshi*)**PLACE:** Susanoo Shrine, Fukuyama City**ACCESS:** From JR Kamidote Station (JR Fukuen Line), walking time to destination is 3 minutes.**INQUIRIES:** Susanoo Shrine 0847-51-2958**Saturday, July 14****The 11th Kurahashi Kentoshi-sen Festival**だい かい けんとうしせん
第11回 くらはし 遣唐使船まつり**TIME:** 4:00 pm – 9:00 pm ® Fireworks festival will be held from 8:15 pm.**PLACE:** Katsurahama Beach, Kurahashi-cho, Kure City**ACCESS:** Take a bus from JR Kure Station (JR Kure Line) and get off at Katsurahama Onsen Kan.**INQUIRIES:** *Kurahashi Shimin Center* 0823-53-1111© It is said that Katsurahama beach was one of the ports of call of *Kentoshi*, envoys to the Tang Court in China between the 7th and the 9th century.**Sunday, July 15****Tadanoumi Gion Festival & Mikoshi Parade**ただのうみぎおんまつり ぎょうじ
忠海 祇園祭 とみこし行事**TIME:** Highlight of the Event – around 3:00pm

Please feel free to contact the International Exchange Lounge at 082-247-9715.

E-mail: golounge@pcf.city.hiroshima.jp

July 2018

PLACE: Around JR Tadanoumi Station, Takehara City

ACCESS: Get off at JR Tadanoumi Station (JR Kure Line).

INQUIRIES: Tadanoumi Kaihatsu Yahata Shrine 0846-26-0859

© Men who have turned and will turn 20 years of age this year carry *mikoshi*, a portable shrine, and parade through the streets all day. The festival is designated as one of Hiroshima Prefecture's intangible folklore cultural assets.

Friday, July 20

Hatsuka-no-ichi Market はつか いち
廿日の市

TIME: 8:00 am – 11:30 am

PLACE: The Open Space in front of Hatsukaichi City Hall, Hatsukaichi City

ACCESS: From Hatsukaichi Shiyakusho-mae (Hiroden Streetcar Miyajima Line), walking time to destination is 5 minutes.

INQUIRIES: *Hatsukaichi Kanko Kyokai* (Tourist Association) 0829-31-5656

Saturday, July 21 & Sunday, July 22 N Applications for the competition have already been closed.

Kendama World Cup 2018 Hatsukaichi けん だま
玉ワールドカップ 2018 はつかいち
廿日市

PLACE: Hatsukaichi City Sports Center "Suncherry", Hatsukaichi City

ACCESS: From JR Miyauchi Kushido Station (JR Sanyo Line) or Hatsukaichi Shiyakusho-mae Streetcar Stop (Hiroden Miyajima Line), walking time to destination is 10 minutes.

ADMISSION FEE: Free

INQUIRIES: *Hatsukaichi City Kanko Kyokai* (Tourist Association) 0829-31-5656

Official HP: <https://www.gloken.net/jp/kwc/>



Saturday, July 21

Mizu Matsuri (Water Festival) み お ちよう みずまつ
水尾町の水祭り

TIME: 5:00 pm – 9:00 pm

PLACE: Around Kumano Gongen Shrine and Mio-no-shoji, Onomichi City

ACCESS: From JR Onomichi Station (JR Sanyo Line), walking time to destination is 15 minutes.

INQUIRIES: *Mamoru Kai* (Imagawa Chaho) 0848-37-3766

© This is a festival handed down since the Edo Period (1603 –1868). The festival will be postponed until Sunday, July 22 if it rains heavily on the 21st.

Saturday, July 21

Kurose Fureai Summer Festival くろせ なつ
黒瀬ふれあい夏まつり

TIME: 4:00 pm – 9:00 pm

PLACE: Around *Kurose Shogai Gakushu Center*, Kurose-cho, Higashihiroshima City

ACCESS: j From JR Higashihiroshima Station (JR Sanyo Line), driving time to destination is 25 minutes. k Take a bus from JR Saijo Station (JR Sanyo Line) and get off at Naka Kurose. Walking time to destination is 5 minutes.

INQUIRIES: Executive Committee 0823-82-3075

© This will be postponed until Sunday, July 22 if it rains heavily on the 21st.

Saturday, July 21

Tadanoumi Tenjin Yo-ichi Summer Festival ただのうみてんじん よいち
忠海天神夜市

TIME: 5:00 pm – 9:00 pm

PLACE: In front of JR Tadanoumi Station, Takehara City

ACCESS: Get off at JR Tadanoumi Station (JR Kure Line).

Please feel free to contact the International Exchange Lounge at 082-247-9715.

E-mail: golounge@pcf.city.hiroshima.jp

July 2018

INQUIRIES: *Tadanoumi Hohoemi Town Shoten Kai* 0846-26-1325

© Traditional local performing arts, kiosks, etc.

Saturday, July 21 & Sunday, July 22

Takehara Sumiyoshi Festival たけはらすみよし **竹原住吉まつり**

PLACE: Sumiyoshi Shrine, Takehara City

ACCESS: From JR Takehara Station (JR Kure Line), walking time to destination is 10 minutes.

INQUIRIES: Executive Committee 0846-22-0298

© This is a traditional summer festival in Takehara City that has been observed since the Edo period.

Saturday, July 21 & Sunday, July 22

Bingo Kokufu Festival びんごこくふ **備後国府まつり**

PLACE: w Festival: Central area of Fuchu City w Fireworks festival: *Fuchu Gakuen Kita Ground*

ACCESS: From JR Fuchu Station (JR Fukuen Line), walking time to destination is 5 minutes.

INQUIRIES: Executive Committee 0847-45-0678

© A fireworks show will be held on the 22nd (7:30 pm – 9 pm).

© This will be postponed until July 28 and 29 if it rains heavily on the event days.

Saturday, July 28

Kure Fireworks Festival くれ なつ かいじょうはなびたいかい **呉の夏まつり「海上花火大会」**

TIME: 8:00 pm – 8:45 pm

PLACE: Kure Port, Kure City

ACCESS: From JR Kure Station (JR Kure Line), walking time to destination is 20 minutes.

INQUIRIES: *Kure Matsuri Kyokai* 0823-21-0151

© This will be canceled if it rains heavily on the 28th.



Saturday, July 28

Miyoshi Kinsai Festival みよし 三 次 きん さい まつり **三次きんさい祭**

TIME: Parade will start from 5:00 pm onward.

PLACE: Around Miyoshi-machi and Tokaichi Chuo-dori Street, Miyoshi City

ACCESS: From JR Miyoshi Station (JR Geibi Line), walking time to destination is 5 – 10 minutes.

INQUIRIES: Executive Committee 0824-62-8868

Saturday, July 28

Kinoe Ju-shichi-ya-sai (Festival & Boat Race) & Fireworks Festival

じゅうしちやさい かいでんまきょうそう かいじょうはなびたいかい
きのえ 十七夜祭 (櫂伝馬競争)・海上花火大会

TIME: w *Ju-shichi-ya-sai* Festival: 9:00 am – 8:40 pm w Fireworks Festival: 8:00 pm – 8:40 pm

PLACE: *Ju-shichi-ya-sai* Festival – Kinoe Area and Kinoe Port, Osaki-kamijima-cho

Fireworks Festival – Around Kinoe Port, Osaki-kamijima-cho

ACCESS: Get off at JR Takehara Station (JR Kure Line) and go to the Takehara Port by bus or on foot.

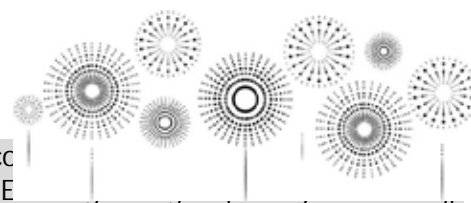
Then get on a ferry and get off at Tenma Port. Walking time to destination is 10 minutes.

² The 9:05 pm ferry departing from Tarumi Port is the last ferry to Takehara Port.

INQUIRIES: *Osaki-kamijima-cho Kanko Kyokai* (Tourist Association) 0846-65-3455

Please feel free to call

at 082-247-9715.



July 2018

Saturday, July 28**Onomichi Sumiyoshi Fireworks Festival** すみよしはなび **おのみち住吉花火まつり****TIME:** 7:30 pm – 9:00 pm ① Festival at Sumiyoshi Shrine will start from 2:00 pm onward.**PLACE:** *Onomichi Suido*, Onomichi City**ACCESS:** From JR Onomichi Station (JR Sanyo Line), walking time to destination is 15 minutes.**INQUIRIES:** *Onomichi Sumiyoshi Kai* 0848-22-2165© The fireworks will be postponed until July 29 (Sun.) or 30 (Mon.) if it rains heavily on the 28th.**Events Held in Yamaguchi Prefecture****Friday, June 1 – Monday, September 10****Cormorant Fishing in Iwakuni** きんたいきょう うかい **錦帯橋の鵜飼****TIME:** 7:00 pm – 9:00 pm**PLACE:** Nishiki-gawa River & Kintaikyo Bridge, Iwakuni City**ACCESS:** Get off at JR Iwakuni Station (JR Sanyo Line) and take a bus bound for Kintaikyo Bridge. Get off at Kintaikyo (a 20 min. bus ride).**PASSENGER FARE:** Adults-¥2,000 Children-¥1,000² The fare will be temporarily changed on August 4, the day of the fireworks festival.**RESERVATIONS & INQUIRIES:** Iwakuni City *Kanko Kyokai* (Tourist Association) & *Ukai Office* 0827-28-2877

© Originating about 400 years ago, cormorant fishing under lit lanterns is a summer tradition in Iwakuni.

Saturday, July 21**Iwakuni Minato-matsuri Fireworks Festival** いわくにこう まつりはなびたいかい **岩国港みなと祭花火大会****TIME:** 8:00 pm – 9:00 pm**PLACE:** Around *Iwakuni-ko* Port Building, Iwakuni City**ACCESS:** Take a bus bound for Otake from JR Iwakuni Station (JR Sanyo Line) and get off at Shin-minato.**INQUIRIES:** Executive Committee 0827-23-1055© The fireworks will be postponed until Sunday, July 22 if it rains heavily on the 21st.**Saturday, August 4****Nishiki-gawa River Water Festival** にしきがわみず さいてん **錦川水の祭典****TIME:** ① Festival: 9:00 am – 9:30 pm

② Fireworks Festival: 8:00 pm – 9:30 pm

PLACE: Around Kintaikyo Bridge, Iwakuni City**ACCESS:** Take a bus bound for Kintaikyo Bridge from JR Iwakuni Station (JR Sanyo Line) and get off at Kintaikyo (a 20 min. bus ride). ² Extra buses will run from the station on the event day.**INQUIRIES:** *Iwakuni City Kanko Kyokai* (Tourist Association) 0827-41-2037 (8:30 am – 5:15 pm)© The fireworks will be postponed until Saturday, August 25 if it rains on the 4th.© An *Iwakuni taiko* (traditional Japanese drums) performance will also be held in the evening.

Please feel free to contact the Exchange Lounge at 082-247-9715.
E-mail: hiroshima.jp

July 2018

Municipal Facilities



G Facilities

(Address / Telephone / Open Hours / Closed / Admission Fee / URL)

Admission is generally allowed up to 30 min. prior to closing.

P Hiroshima City Forest Park & Insectarium

(173 Fujigamaru, Fukuda-cho, Higashi-ku 732-0036 / Forest Park: 899-8241, Insectarium: 899-8964 / Forest Park: 9:00 am - 4:30 pm; Insectarium: 9:00 am - 4:30 pm / Closed: Forest Park - July 4, 11 & 18; Insectarium - Wednesdays / Admission Fees for the Insectarium: Adults-¥510, Seniors & high school students-¥170, Junior high & elementary school students-Free (Free admission for high school students on Saturdays (except on national holidays and during school holidays)) / Forest Park: <http://www.daiichib-shitei.com/forest/> Insectarium: <http://www.hiro-kon.jp/>)

Events at the Forest Park

- ! **Park Sports: Kubb** / Sunday, July 8 / 10:00 am - 3:00 pm ² Participants will be accepted between 10:00 am and 2:00 pm. The first 100 people will be accepted on the day. / *Shibafu Hiroba* / Participation fee: Free
J Kubb is a Swedish lawn game.
- ! **Lecture on the Grass Whistle** / Sunday, July 15 / 1:00 pm - 3:00 pm / *Shibafu Hiroba, Kyukei-jo* / Fee: Free
- ! **Watermelon Splitting Contest** / Monday, July 16 / j 10:30 am k 1:30 pm / *Shibafu Hiroba, Kyukei-jo* / For elementary school students and under & their guardians (pair) / Participation fee: Free
² Participants will be accepted from 9:00 am for j and from 12:30 pm for k on the day. The first 50 pairs will be accepted for each time slot. Each contest will finish after five watermelons have been used.
- ! **Concerts**
E Sunday, July 22 / 10:00 am - 11:15 am / *Shibafu Hiroba, Kyukei-jo* / Fee: Free
• Saturday, July 28 / 11:30 am - noon / *Shibafu Hiroba, Kyukei-jo* / Fee: Free
- ! **Sketching Event** / Sunday, July 29 / 10:00 am - noon / *Shibafu Hiroba, Kyukei-jo* / For elementary school students and under / Participation fee: Free
² Drawing paper will be given to each person. Please bring other painting tools and materials with you.

- ! **Nature Game** / Sunday, July 29 / 1:00 pm - 3:00 pm / *Shibafu Hiroba* ² The first 50 participants will be accepted from 12:30 pm on the day.
² This will be canceled if it rains heavily.

Events at the Insectarium

- ! **Special Summer Exhibition: Beetles and Stag Beetles of the World 2018** / Saturday, July 14 - Sunday, September 2

E The Hiroshima Botanical Garden

(3-495 Kurashige, Saeki-ku 731-5156 / 922-3600 / 9:00 am - 4:30 pm / Closed on Friday / Adults-¥510, Seniors & high school students-¥170, Junior high and elementary school students-Free (Free admission for high school students on Saturdays (except on national holidays and during school holidays)) / <http://www.hiroshima-bot.jp/>)

<Exhibitions> Exhibitions will close at 3:30 pm on their last day.

▼ Tenji Shiryo-kan

- { **Photo Exhibition: My Favourite Flowers** / Sunday, June 17 - Wednesday, July 25
- { **Botanical Arts** / Saturday, July 28 - Wednesday, September 5

▼ Tenji Onshitsu (hothouse exhibitions)

- { **Colorful Summer Leaves** / Wednesday, June 20 - Monday, July 16
- { **The World's Carnivorous Plants** / Saturday, July 21 - Sunday, August 19
- { **Morning Glories** / Saturday, August 25 - Sunday, September 2
- { **Medicinal Plants** / Saturday, September 8 - Thursday, September 27

▼ Okugai Tenji-jo (outdoor exhibitions)

- { **Morning Glories** / Mid-July - Early September
³ A building (10 m high x 50 m wide) will be covered with morning glories that look like a huge curtain.

<Event>

- { **Summer Fair** / Saturday, July 21 - Thursday, August 30

<Lectures>

- { **Junior Project** / Sunday July 8 / j 11:00 am - noon k 1:30 pm - 2:30 pm
- { **Fern Observation** / Sunday, July 22 / 10:30 am

Please feel free to contact the International Exchange Lounge at 082-247-9715.

E-mail: golounge@pcf.city.hiroshima.jp

July 2018

- noon

- { Carnivorous Plants / Sunday, July 22 / 1:30 pm - 2:00 pm
- { Botanical Class for Families / Wednesday, July 25 / 10:30 am - 2:00 pm / For elementary school students (1st - 3rd grade) and their guardians / Fee: ¥800

To APPLY: Send an *ofuku-hagaki* (return postcard) with your name, address, telephone number, grade and the class name おやこしょくぶつ 親子植物 体験教室 (“*Oyako shokubutsu taiken kyuoshitsu*”) to the Botanical Garden by Thursday, July 5. 30 postcards will be selected at random by a drawing of names.

³ Flower arrangement lesson, outdoor games, exploring the greenhouse, etc.

ㇿ 5-Days Children’s Museum of Culture and Science

(5-83 Moto-machi, Naka-ku 730-0011 / 222-5346 / 9:00 am - 5:00 pm / Closed on July 2, 9, 17, 18, 23 & 30 / Admission fee for planetarium is required (see below).
/ <http://www.pyonta.city.hiroshima.jp/>)

✓ Planetarium will be closed on July 19. ✓

Planetarium

I **Admission Fee for Planetarium:**
Adults-¥510, Seniors & high school students-¥250, Junior high & elementary school students-Free ² Free admission for high school students on Saturdays (except on most national holidays and during school holidays). Admission fee for adults is ¥250 on the second Saturday of every month (except on most national holidays and during school holidays).

¶ Planetarium Programs / Adults-¥510, Seniors & High school students-¥250

☞ **Adventure to Mars** (45 min.) / Until Sunday, September 2

Time Schedule

- ✓ Weekdays (except weekdays between Jul. 21 and Aug. 31): 11:00 am
- ✓ Sat., Sun., national holidays & Jul. 21 - Aug. 31: • 10:00 am , 3:00 pm
- **Feel the Earth ~ Music by Taro Hakase ~** / Until Monday, July 16

Time Schedule

- ✓ Weekdays: 2:00 pm
- ✓ Sat., Sun. & national holidays: • 11:00 am , 2:00 pm

㊤ **Planet of Dolphins** (45 min.) / Friday, July 20, 2018 - Sunday, January 20, 2018

Time Schedule

- ✓ Weekdays (except weekdays between Jul. 21 and Aug. 31): 2:00 pm
- ✓ Sat., Sun., national holidays & Jul. 21 - Aug. 31: • 11:00 am , 2:00 pm

¶ **360° Full Dome Show: HAYABUSA2 - Return to the Universe** (40 min.) / Until Friday, October 26 / Adults-¥510, Seniors & High school students-¥250

Time Schedule

- ✓ Weekdays (except weekdays between Jul. 21 and Aug. 31): 3:00 pm
- ✓ Sat., Sun., national holidays & Jul. 21 - Aug. 31: 1:00 pm

¶ **Refretarium: 2018 Summer Program** / Until Friday, September 7

Time Schedule

- ✓ Weekdays (except weekdays between Jul. 21 and Aug. 31): 1:00 pm
- ✓ Sat., national holiday & Jul. 21 - Aug. 31: 4:00 pm

Admission Fee

High school students and above-¥200

² This is a program to refresh your mind and body during lunch time while watching the starry sky and listening to music. Although the main target of this program is adults, anyone who wishes to rejuvenate themselves is welcome.

¶ **Starry Sky Tour** / Adults-¥510, Seniors & high school students-¥250

☞ **Tonight’s Starry Sky & Hayabusa2 has been reaching its destination, the Asteroid “Ryugu”** / Sunday, July 1, 8 & 15 / 4:00 pm - 4:50 pm

• **Tonight’s Starry Sky & Mars Close Approach to Earth 2018** / Sunday, July 22 - Sunday, October 14

¶ **Special Constellation Projection for Children: Starry Sky of Tanabata** (Star Festival on July 7)

/ Weekdays between June 1 and July 6 (except Mondays) / • 10:00 am - 10:30 am , 11:00 am - 11:30 am / Adults-¥510, Seniors & high school students-¥250

¶ **Mars Observation** / Tuesday, July 31 / 7:30 pm - 10:00 pm / Adults-¥510, Seniors & high school students-¥250

To APPLY: Send an *ofuku-hagaki* (return postcard) with address, representative’s name, number of participants (up to five people), ages, telephone number and the event name

かせい かんさつかい 火星 観察会 (“*Kasei kansatsu kai*”) to the museum postmarked by Tuesday, July 17. 100 people will be selected at random by a drawing of names.



Please feel free to contact the International Exchange Lounge at 082-247-9715.

E-mail: golounge@pcf.city.hiroshima.jp

July 2018

Events

- ¶ Exhibition: What are Cultural Properties? / Saturday, July 21 - Sunday, September 2 / 3F, Kikaku Tenji Hall / Free admission
- ¶ Fire Music Band Concert / Sunday, July 15 / 1:00 pm - 1:45 pm (Doors will open at 12:45pm.) / 1F, Apollo Hall / Free admission
- ¶ Craft Workshops / July 7 (Sat.), 21 (Sat.), 26 (Thurs.) & 29 (Sun.) / 1:00 pm - 3:30 pm / For children under elementary school entry age, elementary school students (1st - 3rd grade) and their guardians / 3F, Kosaku-shitsu (Craft Room) ² July 26: 3F, Sousaku shitsu / Fee: ¥30 for materials
² Each day's program is different. For more information, please contact the museum.
- ¶ Science Show: Bubbles / July 22 (Sun.), 28 (Sat.) & 29 (Sun.) / • 1:30 pm - 2:00 pm , 3:00 pm - 3:30 pm / Fee: Free

μ The events listed below require advance applications.

To APPLY: Send an *ofuku-hagaki* (return postcard) to the museum, postmarked by each event's application deadline with the following information: applicants' names, address, telephone number, school year and the event name and time you wish to attend.

Science Workshop

- Ⓢ The World of Fossils & Make a Fossil Replica / 化石の世界と3Dレプリカ作り ("Kaseki no sekai to 3D replica zukuri") / Saturday, July 21 / j 9:30 am - noon k 1:30 pm - 4:00 pm / For elementary (3rd - 6th grade) & junior high school students / Fee: ¥600 / Closing date for applications: Saturday, July 7 ² 16 people will be selected at random by a drawing of names for each time slot.
- Ⓢ Make a Preserved Sea Shell Specimen / 貝の標本作ってみたいカイ? ("Kai no hyouhon tsukutte minai kai?") / Sunday, July 22 / 1:30 pm - 4:30 pm / For elementary school students / Fee: ¥600 / Closing date for applications: Sunday, July 8 ² 16 people will be selected at random by a drawing of names.
- Ⓢ Flight Science k: Propeller Aircraft / 飛行の科学 ジェット機型プロペラ飛行機 ("Hikou no kagaku k Jet-kigata puropera hikouki") / Tuesday, July 31 / j 9:30 am - noon k 1:30 pm - 4:00 pm / For elementary (3rd - 6th grade) & junior high school students / Fee: ¥400 / Closing date for applications: Tuesday, July 17 ² 16 people will be selected at random by a drawing of names for each time slot.

- Ⓢ Creatures of the Setouchi Sea / 瀬戸内うらわざマリンピック ("Setouchi urawaza marine-pic") / Wednesday, August 1 / j 9:30 am - noon k 1:30 pm - 4:00 pm / For elementary school students (1st & 2nd grade) / Fee: ¥300 / Closing date for applications: Wednesday, July 18 ² 16 people will be selected at random by a drawing of names for each time slot.
- Ⓢ The Wonder of Magnets / 磁石の不思議 ("Jishaku no fushigi") / Sunday, August 5 / j 9:30 am - noon k 1:30 pm - 4:00 pm / For elementary (3rd - 6th grade) & junior high school students / Fee: ¥300 / Closing date for applications: Sunday, July 22 ² 16 people will be selected at random by a drawing of names for each time slot.
- Ⓢ Hand-built Radio / 君も技術者 ペットボトルラジオ ("Kimi mo gijutsusha j PET bottle radio") / Wednesday, August 8 / j 9:30 am - noon k 1:30 pm - 4:00 pm / For elementary (3rd - 6th grade) & junior high school students / Fee: ¥700 / Closing date for applications: Wednesday, July 25 ² 16 people will be selected at random by a drawing of names for each time slot.
- Ⓢ Secrets of the Water Strider / 忍者アメンボのヒミツ ("Ninja amenbo no himitsu") / Saturday, August 11 / 1:30 pm - 4:00 pm / For elementary (3rd - 6th grade) & junior high school students / Fee: ¥100 / Closing date for applications: Saturday, July 28 ² 16 people will be selected at random by a drawing of names.

Craft Workshops

- Ⓢ Dinosaur-making with Recycled Paper & Hangers / 恐竜づくり ("Kyoryu zukuri") / Tuesday, July 31 / j 9:30 am - noon k 1:30 pm - 4:00 pm / For elementary school students / Fee: ¥100 / Closing date for applications: Tuesday, July 17 ² 20 people will be selected at random by a drawing of names for each time slot.
- Ⓢ Clay Workshop / 粘土で作る工作 ("Nendo de tsukuru kousaku") / Friday, August 3 / j 9:30 am - noon k 1:30 pm - 4:00 pm / For elementary school students / Fee: ¥1,100 / Closing date for applications: Friday, July 20 ² 20 people will be selected at random by a drawing of names for each time slot.
- Ⓢ Tole Painting / トールペイント ("Tole painting") / Sunday, August 5 / j 9:30 am - noon k 1:30 pm - 4:00 pm / For elementary & junior high school students / Fee: ¥1,000 / Closing date for applications: Sunday, July 22 ² 20 people will be selected for each workshop at random by a drawing of names.

Please feel free to contact the International Exchange Lounge at 082-247-9715.

E-mail: golounge@pcf.city.hiroshima.jp

July 2018

® Enamel Brooch / 七宝焼きのブローチ
 (“*Shippo-yaki no brooch*”) / Tuesday, August 7 /
 j 9:30 am - noon k 1:30 pm - 4:00 pm / For
 elementary school students / Fee: ¥500 /
 Closing date for applications: Tuesday, July 24
² 20 people will be selected at random by a
 drawing of names for each time slot.

Other Workshops:

® Paper Craft Workshop: Magic Circle / 紙ニコ
 ケーション講座 マジックサークルを作ろ
 う! (“*Kami-nication kouza: magic circle wo
 tsukurou!*”) / Saturday, July 28 / 1:30 pm -
 4:00 pm / For elementary school students /
 Fee: ¥200 / Closing date for applications:
 Saturday, July 14 ² 20 people will be
 selected at random by a drawing of names.

J Hiroshima City Asa Zoological Park
 (Asa-cho Dobutsuen, Asakita-ku 731-3355 / 838-
 1111 / 9:00 am - 4:30 pm / Closed on Thursdays
 / Adults-¥510, Seniors & high school students-
 ¥170, Junior high & elementary school
 students-Free / <http://www.asazoo.jp/>)

○ Backyard Guide Tour / Saturday, July 7 & 21 /
 j 11:00 am k 1:30 pm / Please gather near
 the entrance at 9:00 am on each activity day.
 The first 10 - 40 people can participate. The
 number of participants will differ depending
 on where you visit. We will explore a
 different place on each trip.

○ Tanabata (Star Festival) at the Zoo / Saturday,
 July 7 / 9:00 am - noon ² The first 100
 participants will be accepted.
³ You can write your *tanabata* wish on a long,
 colored strip of paper, *tanzaku*, and hang it on
 a bamboo branch.

○ Road Safety Lecture by an African Elephant /
 Sunday, July 8 / 11:30 am - noon
² This will be canceled if it rains.

○ Commemorative Event to Celebrate the
 Longevity of our Black Rhinoceros, *Hana's* /
 Saturday, July 14 / 1:00 pm - 1:15 pm

○ Observation of Creatures Living in a Biotope
 / Sunday, July 15 / • 11:00 am - 11:30 am
 , 1:00 pm - 1:30 pm f 2:00 pm - 2:30 pm

○ Asa Zoo & “Miyaji-marine” (Miyajima Public
 Aquarium) Collaboration Event 2018: Stamp
 Rally / Saturday, July 21, 2018 - Sunday,
 March 31, 2019

○ Exhibition: Animals in Africa / Saturday, July
 21 - Sunday, October 21

○ Summer Greetings / Sunday, July 22 / 11:00
 am - noon ³ A treat of ice and watermelons
 will be given to the animals to help them
 stave off the summer heat.

○ Summer School / j Wednesday, July 25 or k
 Friday, July 27 / 9:30 am - 3:00 pm / For
 elementary school students (4th, 5th & 6th
 grade)

To APPLY: Send an *ofuku-hagaki* (return
 postcard) with participant's name, address,
 telephone number, gender, name of school you
 belong to, grade, the date you wish to attend
 (j or k), whether you have a pet at home,
 the kind of pet you have and the event name
 サマースクール (“*Summer school*”) to the Zoo
 by Friday, July 13. 35 participants will be
 selected for each day at random by a drawing
 of name.

○ Giant Salamander Facility Tour / Saturday,
 July 28 / 11:00 am - 11:45 am
² Participation tickets will be distributed
 from 9:00 am at the main entrance until 20
 spots are filled.

○ Meet the Black Rhinoceros, *Hana* / Saturday,
 July 28 / • 1:30 pm , 1:45 pm
² Participation tickets will be distributed
 from 9:00 am at the main entrance until 10
 spots are filled for each time slot.
³ The black rhinoceros, *Hana*, is the world's
 oldest living black rhinoceros.

U Numaji Transportation Museum
 (Hiroshima City Transportation Museum)
 (2-12-2 Chorakuji, Asaminami-ku 731-0143 / 878-
 6211 / 9:00 am - 5:00 pm / Closed on July 2, 9,
 17, 18, 19, 20, 23 & 30 / Adults-¥510, Seniors &
 high school students-¥250, Junior high school
 students and under-Free
 / <http://www.vehicle.city.hiroshima.jp>)

Ž Summer Special Exhibition: History of
 Domestic Cars / Saturday, July 21 - Sunday,
 September 2

Ž Fire Music Band Concert / Saturday, July 14 /
 1:30 pm - 2:00 pm / 1F, *Tamokuteki Hall* /
 Fee: Free

Ž Science Show: Mystery of Magnets / Sunday,
 July 15 & Monday, July 16 / j 11:30 am -
 11:50 am k 1:30 pm - 1:50 pm f 2:30 pm -
 2:50 pm / 1F, *Tamokuteki Hall* / Fee: Free

Ž Exhibition on a Streetcar Exposed to the A-
 Bomb / Saturday, July 21 / j 11:00 am - noon
 k 1:30 pm - 3:00 pm / *Okugai Hiroba* (outdoor
 open space) / Fee: Free ² This will be
 canceled if the weather is bad.

Ž Vehicle Land: Playing with Toy Vehicles /
 Saturday, July 21 & Sunday, July 22 / 1:00 pm
 - 4:00 pm / 1F, *Tamokuteki Hall* / Fee: Free

Ž Safety License Present for Children / Sunday,
 July 29 / • 10:00 am - noon , 1:30 pm -
 3:30 pm / 1F, *Tamokuteki Hall* / Participation
 fee: Free

Please feel free to contact the International Exchange Lounge at 082-247-9715.

E-mail: golounge@pcf.city.hiroshima.jp

July 2018

Ž **Children's Craft Workshops** / Sunday, July 1, 8, 15, 22, 29 & Monday, July 16 / 1:00 pm - 3:30 pm / For preschoolers, elementary school students and their guardians / 1F, Craft Room / Fee: ¥50 for materials

² The first 100 groups for each time slot can participate on the day.

Ž **Craft Workshops for Elementary School Students** / 1F, Craft Room / For elementary school students (1st - 4th grade students should be accompanied by their guardians.)

To APPLY: Send an *ofuku-hagaki* (return postcard) to the museum by each workshop's application deadline with the following

information: class name しょうがくせいこうさくきょうしつ (Shougakusei kousaku kyoushitsu), workshop name, event date and time you wish to attend; participant's name, name of the school he/she belongs to, grade, his/her guardian's name, address, telephone number.

Ⓡ **Remote-control Bus** / リモコン路線バス ("Rimokon rosen bus") / Saturday, July 21 / 1:00 pm - 4:00 pm / Fee: ¥400 / Closing date for applications: Saturday, July 7

² 25 people will be selected at random by a drawing of names.

Ⓡ **Electric-powered Propeller Boat** / 電動プロペラボート ("Dendo propeller boat") / Tuesday, July 24 / 1:00 pm - 4:00 pm / Fee: ¥500 / Closing date for applications: Tuesday, July 10 ² 25 people will be selected at random by a drawing of names.

Ⓡ **Insect Robot** / ジグザグ昆虫ロボ ("Zigzag konchu robot") / Wednesday, July 25 / 1:00 pm - 4:00 pm / Fee: ¥300 / Closing date for applications: Wednesday, July 11 ² 25 people will be selected at random by a drawing of names.

Ⓡ **Paper Airplane** / デルタ翼紙ひこうき ("Delta-yoku kami hikouki") / Tuesday, July 31 / • 9:30 am - 11:30 am , 1:30 pm - 3:30 pm / Fee: ¥100 / Closing date for applications: Tuesday, July 17 ² 15 people will be selected at random by a drawing of names for each time slot.

⊗ Hiroshima City Ebayama Museum of Meteorology

(1-40-1 Eba-minami, Naka-ku 730-0835 / 231-0177 / 9:00 am - 5:00 pm / Closed on Mondays (except July 16), July 17, 18, 25, 26 & 27 / Adults-¥100, Seniors & high school students-¥50, Junior high & elementary school students-Free (Free admission for high school students on Saturdays except during school holidays) / <http://www.ebayama.jp/>)

T Science Shows:

Ⓡ **Mystery of Air** / July 1 (Sun.), 7 (Sat.) & 8 (Sun.) / j 1:30 pm - 2:00 pm k 3:00 pm - 3:30 pm

Ⓡ **Balloons** / July 15 (Sun.), 16 (Mon.), 21 (Sat.), 22 (Sun.) & 24 (Tue.) / w Jul. 15 & 16: j 1:30 pm - 2:00 pm k 3:00 pm - 3:30 pm w Jul. 21, 22 & 24: j 11:00 am - 11:30 am , 1:30 pm - 2:00 pm f 3:00 pm - 3:30 pm

Ⓡ **Amazing Experiments** / July 28 (Sat.), 29 (Sun.) & 31 (Tue.) / j 11:00 am - 11:30 am , 1:30 pm - 2:00 pm f 3:00 pm - 3:30 pm

T Science Workshops: Tropical Fish-shaped Toy

/ Saturday, July 14 / 1:00 pm - 3:30 pm / For junior high school students and under / Fee: ¥70 for materials

² The first 50 participants will be accepted from 10:00 am on the day.

H Hiroshima City Museum of History and Traditional Crafts

(2-6-20 Ujina-miyuki, Minami-ku 734-0015 / 253-6771 / 9:00 am - 5:00 pm / Closed on Mondays (except July 16), July 17 & 18 / Adults-¥100, Seniors & high school students-¥50, Junior high school students and under-Free / <http://www.cf.city.hiroshima.jp/kyodo/>)

P Special Exhibitions

Ⓡ **Everyday Life during the Wart from Comics, "In this Corner of the World"** / Until Sunday, July 8

Ⓡ **Ghost's Summer Holiday** / Friday, July 20 - Sunday, August 26

P Special Summer Events

Ⓡ **Play Corner** / July 24 (Tue.) - 27 (Fri.), 31 (Tue.) & August 1 (Wed.) / • 10:00 am - 10:30 am , 11:00 am - 11:30 am f 1:30 pm - 2:00 pm , 2:30 pm - 3:00 pm / Participation fee: Free (admission fee for the museum is required.)

² The first 30 participants for each time slot will be accepted from 30 min. before each starting time on the day.

Ⓡ **Fire Music Band Concert** / Sunday, July 29 / 11:00 am - 11:30 am / Fee: Free (admission fee for the museum is required.)

² Numbered tickets for the first 80 people will be distributed from 10:15 am on the day.

Ⓡ **Craft Workshops** / August 2 (Thurs.), 3 (Fri.), 8 (Wed.) - 10 (Fri.) & 14 (Tue.) - 17 (Fri.) / • 10:00 am - 10:30 am , 11:00 am - 11:30 am f 1:30 pm - 2:00 pm , 2:30 pm - 3:00 pm / Participation fee: Free (admission fee for the museum is required.)

² The first 30 participants for each time slot will be accepted from 30 min. before each starting time on the day.

Please feel free to contact the International Exchange Lounge at 082-247-9715.

E-mail: golounge@pcf.city.hiroshima.jp

July 2018

® **Museum Tour** / Monday, August 6 / 9:00 am - 5:00 pm / Participation fee: Free (Admission fee for the museum is required.)

³ Looking around the museum, which was exposed to the A-bomb, tasting food eaten during and after the war, etc.

P **Workshops, etc.**

® **Dyeing Lesson for Adults** / Friday, September 7 / 1:00 pm - 3:00 pm / 18 years old and above / Participation fee: ¥2,000 (Admission fee for the museum is also required.)

² Applications will be accepted by phone or fax between August 1 and 4. 20 people will be selected at random by a drawing of names.

Hiroshima City Cinematographic and Audio-Visual Library

(3-1 Moto-machi, Naka-ku 730-0011 / 223-3525 / 10:00am - 8:00pm (Tue.-Sat.), 10:00 am - 5:00 pm (Sunday, national holidays & August 6) / Closed on Mondays (except July 16), July 17 / **35mm Film Showings** Adults-¥510, Seniors & High school students-¥250, Junior high school students and under-Free; **Other Film Showings** Adults-¥380, Seniors & high school students-¥180, Junior high school students and under-Free, Admission free for foreign students (Please show your student ID or the Hiroshima International Center Complimentary Pass.) / <http://www.cf.city.hiroshima.jp/eizou/>)

• **July Special Showings of Masterpieces of Japanese Film: Cinema Album** (Screened in Japanese only)

I **Admission Fee:** Adults-¥510, Seniors (65 years old and above)-¥250, People born in 1989 and later-Free

« Saturday, July 28: Adults-¥380, Seniors (65 years old and above)-¥180, People born in 1989 and later-Free

Y **Saturday, July 14** / j 10:30 am k 2:00 pm
f 6:00 pm

Tabi no omosa / 旅の重さ (1972, Shochiku (Ofuna), 91 min., color, 35 mm film) / Director: Koichi Saito / Cast: Yoko Takahashi, Kyoko Kishida, Etsushi Takahashi, Kumiko Akiyoshi

Y **Sunday, July 15** / j 10:30 am k 2:00 pm
Ai to Makoto / 愛と誠 (1974, Shochiku, Geiei Pro, 89 min., color, 35 mm film) / Director: Shigeyuki Yamane / Cast: Hideki Saijo, Ai Saotome, Masami Naka, Kenji Takaoka



Y **Monday, July 16** / j 10:30 am k 2:00 pm
Sukanpin walk / すかんぴんウォーク (1984, Watanabe Production, Cinema Hauto, NCP, 105 min., color, 35 mm film) / Director: Kazuki Omori / Cast: Koji Kikkawa, Tatsuo Yamada, Yoko Katori, Yoshio Harada

Y **Wednesday, July 18** / j 10:30 am k 2:00 pm
f 6:00 pm
W no higeki / Wの悲劇 (1984, Kadokawa Haruki Jimusho, 109 min., color, 35 mm film) / Director: Shinichiro Sawai / Cast: Hiroko Yakushimaru, Masanori Sera, Yoshiko Mita, Kunihiko Mitamura

Y **Thursday, July 19** / j 10:30 am k 2:00 pm
f 6:30 pm
You've got a chance / ユー・ガッタ・チャンス (1985, Watanabe Production, NCP, Cinema Hauto, 101 min., color, 35 mm film) / Director: Kazuki Omori / Cast: Koji Kikkawa, Yuko Asano, Yoshio Harada, Toshio Shiba

Y **Friday, July 20** / j 10:30 am k 2:00 pm
f 6:00 pm
Ojuken / お受験 (1999, Shochiku, Kadokawa Shoten, Eisei Gekijo, 114 min., color, 35 mm film) / Director: Yojiro Takita / Cast: Eikichi Yazawa, Yuko Tanaka, Masahiko Nishimura, Ren Osugi

Y **Saturday, July 21** / j 10:30 am k 2:00 pm
f 6:00 pm
Tengoku kara kita otoko tachi / 天国から来た男たち (2001, "Tengoku kara kita otoko tachi" Seisaku linkai, 114 min., color, 35 mm film) / Director: Takashi Miike / Cast: Koji Kikkawa, Tsutomu Yamazaki, Nene Otsuka, Kenichi Endo

Y **Wednesday, July 25** / j 10:30 am k 2:00 pm
f 6:00 pm
Kasutamu-meido 10.30 / カスタムメイド 10.30 (2005, "Kasutamu-meido 10.30" Seisaku linkai, 121 min., color, 35 mm film) / Director: ANIKI / Cast: Kaera Kimura, Erika Nishikado, Ryo Kase, Tamio Okuda

Y **Thursday, July 26** / j 10:30 am k 2:00 pm
f 6:00 pm
Kizudarake no kunsho / 傷だらけの勲章 (1986, Finds Corporation, Toho Kikaku, 116 min., color, 35 mm film) / Director: Mitsumasa Saito / Cast: Hideki Saijo, Katsuo Nakamura, Naomi Chiaki, Mayumi Asaka

Y **Friday, July 27** / j 10:30 am k 2:00 pm
f 6:00 pm
Team Batista no eiko / チーム・バチスタの栄光 (2008, Eiga "Team Batista no eiko" Seisaku linkai, 118 min., color, 35 mm film) / Director: Yoshihiro Nakamura / Cast: Yuko Takeuchi, Hiroshi Abe, Koji Kikkawa, Shiro Sano

Y **Saturday, July 28** / j 10:30 am k 2:00 pm
f 6:00 pm
WE ARE Perfume WORD TOUR 3rd DOCUMENT (2015, "WE ARE Perfume" Film Partners, 120 min., color, Blu-ray) / Director: Taketoshi Sado / Cast: Ayaka Nishiwaki, Yuka Kashino, Ayano Ohmoto

Please feel free to contact the International Exchange Lounge at 082-247-9715.

E-mail: golounge@pcf.city.hiroshima.jp

July 2018

• EU Film Days 2018 (Screened in original language with Japanese subtitles)

I Admission Fee: Adults-¥380, Seniors (65 years old and above)-¥180, People born in 1989 and later-Free

Ÿ Sunday, July 1 / 10:30 am

Magic Kimono (2017, Latvia, Japan, 99 min., color, Blu-ray, Japanese subtitles) / Director: Maris Martinsons

Ÿ Sunday, July 1 / 2:00 pm

Minu näoga onu / The Man who Looks Like Me (2017, Estonia, 116 min., color, Blu-ray, Japanese & English subtitles) / Director: Katrin Maimik, Andres Maimik

Ÿ Wednesday, July 4 / • 2:00 pm , 6:30 pm

Cavalo Dinherio / Horse Money (2014, Portugal, 104 min., color, Blu-ray, Japanese subtitles) / Director: Pedro Costa

Ÿ Thursday, July 5 / • 2:00 pm , 6:00 pm

Dom över död man / The Last Sentence (2012, Sweden, Norway, 126 min., B&W, Blu-ray, Japanese subtitles) / Director: Jan Troell

Ÿ Friday, July 6 / • 2:00 pm , 6:30 pm

Tiszta szivvel / Kills on Wheels (2016, Hungary, 99 min., color, Blu-ray, Japanese subtitles) / Director: Attila Till

Ÿ Saturday, July 7 / 2:00 pm

Uzbuna na Zelenom Vrhu / The Mystery of Green Hill (2017, Croatia, 81 min., color, Blu-ray, Japanese subtitles) / Director: Cejen Cernic

Ÿ Saturday, July 7 / 6:00 pm

Wilsonov / Wilson City (2015, Slovakia, Czech Republic, 115 min., color, Blu-ray, Japanese & English subtitles) / Director: Tomáš Masín

Ÿ Sunday, July 8 / 10:30 am

Swagger (2016, France, 84 min., color, Blu-ray, Japanese subtitles) / Director: Olivier Babinet

Ÿ Sunday, July 8 / 2:00 pm

De kinderen van juf Kiet / Miss Kiet's Children (2016, Netherlands, 113 min., color, Blu-ray, Japanese & English subtitles) / Director: Petra Lataster-Czisch, Peter Lataster

Ÿ Wednesday, July 11 / • 2:00 pm , 6:30 pm

Маймуна / Monkey (2016, Bulgaria, 93 min., color, Blu-ray, Japanese & English subtitles) / Director: Demitar Kotzev

Ÿ Thursday, July 12 / • 2:00 pm , 6:30 pm

Rusty Boys (2017, Luxemburg, 107 min., color, Blu-ray, Japanese & English subtitles) / Director: Andy Bausch

Ÿ Friday, July 13 / 2:00 pm

Alois Nebel (2011, Czech Republic, Germany, 87 min., B&W, Blu-ray, Japanese subtitles) / Director: Tomáš Lunák

Ÿ Friday, July 13 / 6:30 pm

Die beste aller Weltcn / The Best of All

Worlds (2017, Austria, Germany, 103 min., color, Blu-ray, Japanese & English subtitles) / Director: Adrian Goiginger



Please feel free to contact the International Exchange Lounge at 082-247-9715.

E-mail: golounge@pcf.city.hiroshima.jp

July 2018

図書だより

2018年7月

今月のおすすめ図書

大邱週末トラベル:

韓国第3の都市で過ごすときめくテグの楽しみ方48
あんそらノ著 (メイツ出版, 2018年)

シンガポール 絶品! ローカルごはん:

名物食堂から屋台まで、本当においしい店を教えます!
丹保美紀ノ著 (ダイヤモンド・ビッグ社, 2015年)

コッツウォルズ: イングランドで一番美しい場所

小林写函ノ写真・文 (ダイヤモンド・ビッグ社, 2015年)

ドイツで100年続くもの

見市知ノ著 (産業編集センター, 2015年)

カリフォルニア・オーガニックトリップ:

サンフランシスコ&ワインカントリーのスローライフへ!
関根絵里ノ著 (ダイヤモンド・ビッグ社, 2014年)

本のリクエストなど図書コーナーに関するご要望はスタッフまでお気軽にお申し出ください。

¥◎

図書コーナー

場 所: 広島国際会議場 1F・国際交流ラウンジ (平和記念公園内)
TEL (082)247-9715

開館時間: 9:00am - 7:00pm (4月1日から9月30日まで)
9:00am - 6:00pm (10月1日から3月31日まで)

休館日: 12月29日 ~ 1月3日

貸 出: 図書は2週間を期限として、1回3冊まで借りることができます。

初めて利用する際には、住所や在留期間(外国人の方)を証明するもの(運転



Please feel free to contact the International Exchange Lounge at 082-247-9715.

E-mail: golounge@pcf.city.hiroshima.jp

July 2018

めんきょしょう がくせいしょう
免許証・学生証・パスポート・在留^{ざいりゅう}カードなど)を提示^{ていじ}して下^{くだ}さい。

Assisting with International Cooperation with Used Stamps & PET Bottle Caps

The International Exchange Lounge collects used stamps to assist international cooperation activities. Through the volunteer groups, JOCS*, the collected stamps are sold to collectors to raise money. With the profit, items such as milk and medicine are purchased and doctors as well as nurses are dispatched throughout Asia and other continents. We also collect PET bottle caps in order to support the "Ecocap Action". The sales profits obtained by recycling caps are donated to the Japan Committee "Vaccines for the World's Children" (JCV).

*JOCS: Japan Overseas Christian Medical Cooperative Service

HOW TO COLLECT:

- © **Stamps** ☪ When you cut stamps from envelopes, please leave 5 mm of paper around them. It is not necessary to remove them from the envelope. Torn or folded stamps cannot be accepted.
- © **PET Bottle Caps** ☪ Only PET bottle caps for drinks or mineral water are accepted. Please wash the caps and tear off the sticker if it has one. This is in order to avoid damaging the recycling machines. Things such as metal caps and pull-top tabs cannot be accepted.

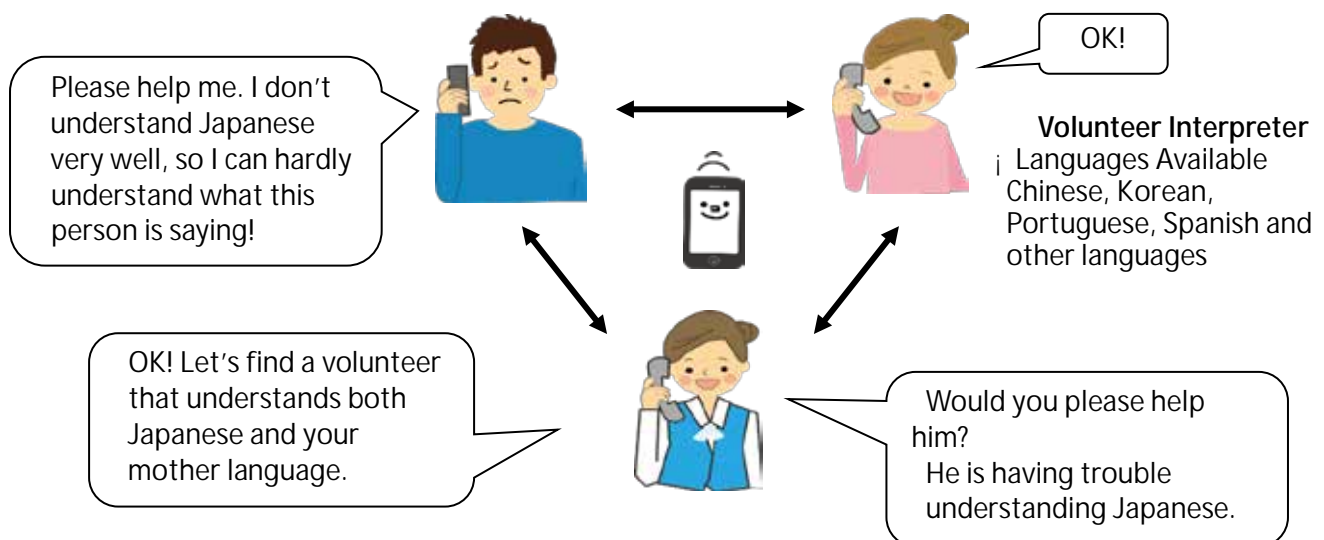
Trio-Phone Service (Multilingual Interpretation over the Telephone)



What is Trio-Phone ?

Trio-Phone Service allows three people to have a conversation at the same time through the telephone. If you are having difficulties communicating in Japanese, call the International Exchange Lounge (082-247-9715).

A volunteer interpreter will help you through the Trio-Phone Service!



For further information, please ask the staff at the International Exchange Lounge.

Please feel free to contact the International Exchange Lounge at 082-247-9715.

E-mail: golounge@pcf.city.hiroshima.jp

Garbage Disposal Information

Separate garbage properly and take it to the collection site by 8:30am on the designated day. Please do NOT take garbage to the site on the night before. Garbage collection days vary depending on where you live and the category of the refuse. For further details, consult your local ward office or your neighbors to be sure of the proper disposal method. "Hiroshima 8", a handbook on how to separate garbage, and "Hiroshima City Garbage Disposal Guidelines for the 2017 fiscal year", a garbage chart with schedules of garbage collection days, are available at ward offices, branch offices and community halls. The Handbook and Guidelines are translated into English, Spanish, Portuguese, Chinese and Korean. These are also available at the International Exchange Lounge (International Conference Center Hiroshima), so please ask the staff if you need them.

HIRO CLUB NEWS is published monthly and provides essential and entertaining information about life in Hiroshima City. It is available in print at the International Exchange Lounge, and online at our website: <http://www.pcf.city.hiroshima.jp/ircd/english/hiroclubnews/> Selected information is also available in other languages including Chinese, Portuguese and Spanish.

HIRO CLUB NEWS は広島的生活情報やイベント等の情報を掲載している月刊情報誌です。国際交流ラウンジにて配布しています。当課ホームページ(<http://www.pcf.city.hiroshima.jp/ircd/english/hiroclubnews/>)にも掲載しています。英語版の情報の一部を抜粋した中国語・ポルトガル語・スペイン語版も作成しています。

* * * * *

Edited and published by the Hiroshima Peace Culture Foundation
International Affairs Department, International Relations and Cooperation Division
Tel: (082) 242-8879, Fax: (082) 242-7452, E-mail: internat@pcf.city.hiroshima.jp
International Exchange Lounge
Tel: (082) 247-9715, E-mail: golounge@pcf.city.hiroshima.jp
Website: <http://www.pcf.city.hiroshima.jp/ircd/english/>

編集・発行 公益財団法人広島平和文化センター国際部国際交流・協力課 国際交流ラウンジ
〒730-0811 広島市中区中島町1番5号