



# Hiro Club News

## Hashi: 箸

Chopsticks ('hashi') are a vital element of eating in Japan, and they are available in many designs, colors and lengths. Some are completely round like many Chinese chopsticks, but more commonly they have four rounded sides. They may be made of wood, bamboo or plastics. Rather short, disposable chopsticks called *waribashi* are provided at many restaurants. They are usually made from one piece of plain wood, so have to be split apart. To avoid using chopsticks others may have used, and also help to reduce the amount of wood used for making *waribashi*, some people always carry their own chopsticks with them in a case.

At many houses and restaurants, a chopstick-rest ('hashioki') is provided for each person. You should place your chopsticks on the rest when not using them, so that their tips do not touch the table. *Hashioki* also come in all kinds of designs and may be made of wood, ceramics, glass, bamboo, etc. You can make a simple one yourself from the paper packet (*hashibukuro*) which *waribashi* come in.

### © Taboos when you use chopsticks ©

- *Utsushi-bashi*: Never pass food from your chopsticks to someone else's, because the bones left after cremation are passed like that at funerals.
- *Mayoi-bashi*: Never wave your chopsticks in the air or move them around trying to decide what to eat next.
- *Sashi-bashi*: Never skewer food with chopsticks.
- *Mogi-bashi*: Don't try to pick bits of food off the chopsticks with your teeth.
- *Neburi-bashi*: Don't suck the ends of your chopsticks.
- *Sashi-bashi*: Don't point at people with your chopsticks.

(Abstracted from 『日本の衣食住』まるごと事典』 pp. 94-97, IBC パブリッシング)

October 2018

Happy Halloween

# October 2018

ê City Office Notices

ê Movie Theaters

ê Bilingual TV Programs

ê Concerts & Plays

ê Museums

ê Sports

- Hiroshima Toyo Carp Schedule 2018
- Sanfrece Hiroshima FC Game Schedule 2018
- Hiroshima Dragonflies 2018 – 2019 B2 League

ê Events

- Seasonal Event Information
- Municipal Facilities

ê Lounge & Library

- Library News
- Trio-phone Service  
(multilingual interpretation using the telephone)
- Garbage Disposal

Hiroshima Peace Culture Foundation  
International Exchange Lounge

1-5 Nakajima-cho, Naka-ku, Hiroshima 730-0811

E-mail: [golounge@pcf.city.hiroshima.jp](mailto:golounge@pcf.city.hiroshima.jp)

Tel. 082-247-9715 Fax. 082-242-7452

« Visit the HIRO CLUB NEWS WEBSITE for information online. «  
URL: <http://www.pcf.city.hiroshima.jp/ircd/joho/hiroclub%2001.html>

Jack-o'-Lantern

Trick or Treat!

Scary!

# City Office Notices

City Office Notices contains selected information from the Hiroshima City Newsletter, *ひろしま市民と市政 Hiroshima Shimin to Shisei*. City Office Notices is published twice a month and available in print at the International Exchange Lounge, and online at our website: <http://www.pcf.city.hiroshima.jp/ircd/english/hiroclubnews/>

October 1, 2018

## Topics

- Municipal Sports Facilities Free Admission on October 8 (Sports Day)
- Minimum Wage in Hiroshima Prefecture Will Change from October 1
- Seeking Volunteers for International Festival on November 18
- Small Electrical Item Collection and Food Donation
- Garbage Collection for October 8
- Temporary Closures
- Child Allowance (*Jido Fuyo Teate*) Has Been Expanded

## Municipal Sports Facilities

### Free Admission on October 8 (Sports Day)

体育の日 スポーツ施設無料開放(P5)

**ADMISSION FREE** on October 8 at the following sports facilities:

- Y Ward Sports Centers (Higashi-ku and Aki-ku swimming pools are closed)
- Y Yoshijima, Shinonome and Dejima Indoor Swimming Pools
- Y Ujina and Yuki *Taiikukan* (Gymnasium)
- Y Kurhaus Yunoyama (A service fee (50 yen) is required for people age 12 and older. Towel rental service is not available on the day.)

**INQUIRIES:** Sports *Kyokai* (Sports Association) Tel. 243-0578 Fax. 243-3641

## Minimum Wage in Hiroshima Prefecture Will Change from October 1

最低賃金が変わります(P5)

Hiroshima Prefecture's minimum wage will increase to 844 yen per hour. This applies to all workers regardless of age, gender and employment system.

**INQUIRIES:** *Hiroshima Rodo Kyoku* (Labor Bureau), Wage Section Tel. 221-9244 Fax. 221-9252

## Seeking Volunteers for International Festival on November 18

「国際フェスタ」イベントボランティア募集(P5)

**DATE & TIME:** Sunday, November 18 8:30 am – 5:00 pm

**ACTIVITIES:** Setting up the venue, helping at the information desk

**PLACE:** International Conference Center Hiroshima (1-5 Nakajima-cho, Naka-ku)

**TO APPLY:** Apply by phone or fax to Hiroshima Peace Culture Foundation (International Relations & Cooperation Division) by Monday, October 15. The first 15 people will be accepted.

### Explanatory Meeting for Volunteers

**DATE & TIME:** Thursday, October 25 6:30 pm – 8:00 pm

**PLACE:** International Conference Center Hiroshima (1-5 Nakajima-cho, Naka-ku)

**INQUIRIES:** International Relations & Cooperation Division, Hiroshima Peace Culture Foundation  
Tel. 242-8879 Fax. 242-7452

## Small Electrical Item Collection and Food Donation

家庭で不要になった小型家電と食品を回収します(P5)

Hiroshima City promotes recycling of small used electrical items including computers and collecting food to donate to welfare agencies.

### WHERE to BRING?

**Naka Incineration Plant (*Naka Kojo*)** (1-5-1 Minami-yoshijima, Naka-ku)

Sunday, October 7, 10:00 am – 2:30 pm

**Hiroshima Bunkyo Women's University** (1-2-1 Kabe-higashi, Asakita-ku)

Sunday, October 7, 11:00 am – 3:00 pm (Food donation only. Closed at 4:00 pm.)

Monday, October 8, 11:00 am – 3:00 pm (Closed at 4:00 pm)

**NOTE:**

- Large home electrical appliances including air conditioners, TVs, refrigerators, freezers, washers and dryers are NOT accepted.
- Fresh food is NOT accepted.

### INQUIRIES:

Electronical Items Collection – *Kankyo-seisaku ka* (Environmental Policy Division)  
Tel. 504-2505 Fax. 504-2229

Food Collection – *Gyomu Daiichi Ka* (Operation Division I) Tel. 504-2748 Fax. 504-2229

## Garbage Collection for October 8

10月8日(祝・月)の家庭ごみの収集(P4)

On the national holiday on Monday, October 8, garbage collection will be carried out as scheduled.

**INQUIRIES:** *Gyomu Daiichi Ka* (Operation Division I) Tel. 504-2220 Fax. 504-2229

## Temporary Closures

臨時休館(P6)

### **Minami-ku Library**

**CLOSED:** From Wednesday, October 10 to Tuesday, October 16

**INQUIRIES:** Minami-ku Library Tel. 251-1080 Fax. 252-4120

### **Kurhaus Yunoyama**

**CLOSED:** From Tuesday, October 9 to Thursday, October 11

**INQUIRIES:** Sports *Kyokai* (Sports Association) Tel. 243-0578 Fax. 249-3641

## Child Allowance (*Jido Fuyo Teate*) Has Been Expanded

児童扶養手当の制度改正('市民と市政, 2018.9.15 P7)

Annual earnings limit for Full-paid Child Allowance (*Jido Fuyo Teate*) has been expanded as follows:

Number of dependent family member(s)*	Annual earnings limit for Full-paid** Child Allowance	
	Until July, 2018	From August 2018
0	190,000 yen	490,000 yen
1	570,000 yen	870,000 yen
2	950,000 yen	1,250,000 yen

\*The number of dependent family member(s) is determined according to income tax law.

\*\*There is no change in the annual earnings limit for partially-paid Child Allowance.

From November, 2019, the allowance will be paid 6 times a year, in January, March, May, July, September and November. The allowance for the 3 months from August 2019 to October 2019 will be paid in November 2019. The allowance will be paid every two months from January 2020. Accordingly, the amount of allowance for the 15 months, from August 2018 to October 2019 will be determined based on the annual earnings of 2017. Please note that you must file a current status report (*Genkyo Todoke*) to receive the allowance. There is no change to the report form.

From August 2018, unmarried single parents who have dependent children can receive deductions from income tax by filing proof. The amount of allowance might not be changed even if you file the proof and receive the deduction.

**INQUIRIES:** *Hoken Fukushi Ka* (Public Health & Social Welfare Division)  
or *Fukushi Ka* (Social Welfare Division) for Higashi Ward Office

Ward Office	Telephone	Ward Office	Telephone
Naka	504-2569	Asaminami	831-4945
Higashi	568-7733	Asakita	819-0605
Minami	250-4131	Aki	821-2813
Nishi	294-6342	Saeki	943-9732

# HPCF NEWS

## Hiroshima Peace Culture Foundation News

**October 2018**

Event schedules are subject to change. Please contact event organizers to confirm listed information.

### CIR Question & Answer Day

Are you looking for advice about Hiroshima?

Come in for a chat with our new CIR, Mark Daniel McPhillips.

**DATE & TIME:** Wednesday, October 24, 1:30 pm – 3:30 pm**PLACE:** International Exchange Lounge (International Conference Center Hiroshima 1F, 1-5 Nakjima-cho, Naka-ku)**RESERVATIONS ARE REQUIRED:** Reservations can be made in person or by telephone at the International Exchange Lounge Tel. 247-9715 (Lounge open hours 9:00 am – 6:00 pm)**INQUIRIES:** International Exchange Lounge Tel. 247-9715 Fax. 242-7452

### Video Screening and A-bomb Legacy Successor's Talk

#### Hiroshima Peace Memorial Museum

Open to the public, no reservations required. Please feel free to drop by!

#### Video "HIROSHIMA - Message from Hibakusha"

This is a current video produced to coincide with the East Building's reopening. Approx. 22 min. Provided with English subtitles.

<b>SCHEDULE:</b>	8:45 am-	9:15 am-	9:45 am-	10:15 am-	*	*11:00 am - 3:00 pm: A-bomb Legacy Successor Talks
	3:15 pm-	3:45 pm-	4:15 pm-	4:45 pm-	5:15 pm-	

#### A-bomb Legacy Successor's Talk

A-bomb Legacy Successors have inherited the A-bomb survivors' stories and give testimonies on their behalf. A-bomb Legacy Successors offer lectures in which they present the A-bomb survivors' experiences, the reality of the atomic bombing, and desires for peace. Approx. 60 min.

**SCHEDULE:** 11:00 am (Japanese), 12:30 pm (Japanese), 2:00 pm (English)**PLACE:** Video Theater, 1F, East Building of Hiroshima Peace Memorial Museum**ADMISSION:** Free**INQUIRIES:** Outreach Division, Hiroshima Peace Memorial Museum Tel. 242-7828  
<http://hpmmuseum.jp/?lang=eng>

### New Arrivals Exhibit – Hiroshima Peace Memorial Museum

Even today, the Hiroshima Peace Memorial Museum receives donations including items left by the deceased; various documents, pictures and photographs depicting the disaster of the atomic bombing, which were preserved by the A-bomb victims and their bereaved families with utmost care.

In the last fiscal year (April 2016 – March 2017), 638 items were donated. Of these, 124 items are exhibited in this exhibition.

**PERIOD:** Until Friday, March 1, 2019**PLACE:** Temporary Exhibition Room, B1F, East Building of Hiroshima Peace Memorial Museum**ADMISSION:** Free**INQUIRIES:** Curatorial Division, Hiroshima Peace Memorial Museum Tel. 241-4004 Fax. 542-7941  
URL: <http://hpmmuseum.jp/?lang=eng>

The **International Conference Center Hiroshima** is used for various purposes such as exhibitions and parties. Its large auditorium, which can accommodate 1,504 people, is ideal for concerts, lectures, and domestic and international conferences. The ICCH also includes the International Conference Hall, as well as small, medium, and large conference rooms. In all, the ICCH has five floors, three above ground and two basement floors.

Tel. 242-7777 (9:00 am – 9:00 pm) URL: <http://www.pcf.city.hiroshima.jp/icch/english.html>

Please feel free to contact to the International Exchange Lounge at 082-247-9715.

E-Mail: [golounge@pcf.city.hiroshima.jp](mailto:golounge@pcf.city.hiroshima.jp)

October 2018

# Movie Theaters

October 2018



Here is a general list of movies being shown in theaters around Hiroshima. Due to unpredictable changes in scheduling, listings are subject to change without notice. Foreign films are usually in their original language with Japanese subtitles. When not specified, the admission is **¥1,800** for adults. Theaters offer various kinds of admission discount services, so please inquire at each theater for more information.

## SALON CINEMA

[Hiroshima Toei Plaza Bldg. 8F, 16-10 Hatchobori, Naka-ku / Tel: 082-962-7772 / URL: <https://johakyu.co.jp/>]

- Until October 4 **The Death of Stalin /**  
'17 France, UK, Belgium,  
Canada
- Until October 11 **Mamma Mia! Here We Go**  
**Again /** '18 USA
- Until October 11 **Veceroy's House /** '17 UK
- Until October 11 **L'Insulte /** '17 Lebanon,  
France
- Until October 18 **Wind River /** '17 USA
- From September 28 **L'Amant Double /**  
'17 France
- From October 5 **Tully /** '18 USA
- From October 5 **Darkest Hour /** '17 UK

## HATCHOZA

[Fukuya Department Store Hatchobori 8F, 6-26 Ebisu-cho, Naka-ku / Tel: 082-546-1158 / URL: <http://www.johakyu.co.jp/>]

- Until October 4 **Mission: Impossible – Fallout**  
/ '18 USA

## YOKOGAWA CINEMA Tel : 231-1001

[3-1-12 Yokogawa-cho, Nishi-ku / Tel: 082-231-1001 / URL: <http://yokogawa-cine.jugem.jp/>]

- Until October 7 **La Jeune Filles Sans Mains /**  
'16 France
- Until October 7 **Japon, la Tent Ation**  
**Nationaliste /** '17 France
- October 8 – 14 **Streets of Fire /** '84 USA
- November 1 – 16 **Et les Mistral Gagnants**  
/ '16 France
- November 1 – 22 **The Next Guardian /**  
'17 Bhutan, Hungary
- November 1 – 22 **Komunia /** '16 Poland



## AEON CINEMA HIROSHIMA

[Hiroshima Danbara Shopping Center 6F, 1-3-52 Danbara-minami, Minami-ku / Tel : 082-261-3770 / URL: <https://www.aeoncinema.com/cinema/hiroshima/>]

- From October 12 **The House with a Clock in**  
**its Walls /** '18 USA
- October 19 – November 1 **Borg McEnroe**  
/ '17 Sweden, Denmark, Finland
- From November 2 **Venom /** '18 USA
- From November 9 **Bohemian Rhapsody /**  
'18 UK, USA
- From November 23 **Fantastic Beasts:**  
**The Crimes of Grindelwald /** '18 USA

## 109 CINEMAS

[Alpark 3F (north bldg.), 4-7-1 Kusatsu-minami, Nishi-ku / Tel: 05700-002-109 / URL: <https://www.109cinemas.net/hiroshima/>]

- From August 31 **The Ant-Man and the Wasp**  
/ '18 USA
- From September 7 **The Meg /** '18 USA
- From September 14 **Christopher Robin /**  
'18 USA
- From September 14 **The Predator /** '18 USA
- From September 21 **Skyscraper /** '18 USA
- From September 14 **The Nun /** '18 USA
- From October 5 **The Equalizer 2 /** '18 USA
- From October 12 **The House with a Clock in**  
**its Walls /** '18 USA
- From November 9 **Baahubali: The Beginning**  
/ '15 India

## TOHO CINEMAS MIDORII

[Fuji Grand 3F, 1-5-2 Midorii, Asaminami-ku / Tel : 082-831-8060 / URL: <https://www.tohotheater.jp/>]  
Adults-¥1,800, University students-¥1,500, From preschoolers (3 years old and under) to High school students-¥1,000,

- From August 31 **The Ant-Man and the Wasp**  
/ '18 USA
- From September 14 **The Predator /** '18 USA
- From September 21 **Skyscraper /** '18 USA
- From September 28 **A Quiet Place /** '18 USA
- From October 12 **The House with a Clock in**  
**its Walls /** '18 USA
- From October 12 **I Kill Giants /** '17 USA

Please feel free to contact the International Exchange Lounge at 082-247-9715.

E-mail: [golounge@pcf.city.hiroshima.jp](mailto:golounge@pcf.city.hiroshima.jp)

October 2018

**AEON CINEMA HIROSHIMA SEIFU SHINTO**

[THE OUTLETS HIROSHIMA 1F, 4-1-1, Ishiuchi-higashi,  
Saeki-ku / Tel : 082-941-7070/  
URL: <https://www.aeoncinema.com/cinema/seifu/>]

- From August 3 **Mission: Impossible – Fallout**  
/ '18 USA
- From September 7 **The Meg** / '18 USA
- From September 14 **The Predator** / '18 USA
- From October 12 **The House with a Clock in  
its Walls** / '18 USA
- From October 20 **中国梵高 / China's Van  
Goghs** / '16 China,  
Netherlands
- From November 2 **Venom** / '18 USA

**HIROSHIMA WALD 11**

[AEON Mall Hiroshima Fuchu 4F, 2-1-1 Osu, Fuchu-cho,  
Aki-gun / Tel : 082-561-0600 /  
URL: <http://kinezo.jp/pc/wald11>]

- From September 7 **The Meg** / '18 USA
- From September 14 **The Predator** / '18 USA
- From September 14 **The Nun** / '18 USA
- From September 21 **Skyscraper** / '18 USA
- From September 28 **A Quiet Place** / '18 USA
- From September 28 **Crazy Rich Asians** /  
'18 USA
- From October 5 **The Equalizer 2** / '18 USA
- From October 6 **Tulip Fever** / '17 USA, UK
- From October 12 **The House with a Clock in  
its Walls** / '18 USA
- From October 13 **Beyond Skyline** / '17 USA
- From October 19 **Death Wish** / '18 USA
- From October 19 **Baahubali: The Beginning**  
/ '15 India
- From October 20 **Den of Thieves** / '18 USA
- From November 2 **Venom** / '18 USA
- From November 9 **Bohemian Rhapsody** /  
'18 UK, USA
- From November 16 **L. M. Montgomery's Anne  
of Green Gables: The  
Good Starts** / '17 Canada
- From November 16 **L. M. Montgomery's Anne  
of Green Gables: Fire &  
Dew** / '17 Canada

**2 Movie Showings at 10 am in the Morning**

- Until October 11 **Popiol i Diament** /  
'57 Poland
- October 12 – 25 **Mitt Liv som Hund** /  
'85 Sweden
- October 26 – November 8 **Sophie's Choice**  
/ '82 USA
- November 9 – 22 **近松物語 / Chikamatsu  
Monogatari** / '54 Japan
- November 23 – December 6 **Giant** / '56 USA

- December 7 – 20 **裸の島 / Hadaka no Shima**  
/ '60 Japan
- December 21 – January 3 **Funny Face** / '57  
USA
- January 4 – 17 **The Remains of the Day**  
/ '93 UK
- January 18 – 31 **Being Here** / '79 USA
- February 1 – 14 **Pulp Fiction** / '94 USA
- February 15 – 28 **Once Upon a Time in  
America** / '84 Italy, USA
- March 1 – 14 **Dog Day Afternoon** / '75  
USA
- March 15 – 28 **All the President's Men**  
/ '76 USA

**T-JOY HIGASHI HIROSHIMA**

[Fuji Grand Higashi Hiroshima 3F, 4405 Misonou, Saijo-  
cho, Higashi Hiroshima-shi / Tel : 082-493-6779 / URL:  
[http://kinezo.jp/pc/t-joy\\_hiroshima](http://kinezo.jp/pc/t-joy_hiroshima)]

- From September 7 **The Meg** / '18 USA
- From September 28 **A Quiet Place** / '18 USA
- From November 2 **Venom** / '18 USA
- From November 9 **Bohemian Rhapsody** /  
'18 UK, USA
- From November 23 **Fantastic Beasts:  
The Crimes of Grindelwald** / '18 USA



Please feel free to contact the International Exchange Lounge at 082-247-9715.

E-mail: [golounge@pcf.city.hiroshima.jp](mailto:golounge@pcf.city.hiroshima.jp)

October 2018



# Bilingual TV Programs



October 2018

#1: NHK Sogo	#4: Hiroshima TV
#2: NHK E Tele	#5: Home TV
#3: RCC	#8: TSS

<sup>2</sup> Some changes may occur because of special programming.

## NEWS

### Monday - Sunday

NHK News 7 / 7:00 pm – 7:30 pm (#1)

### Monday - Friday

News Watch 9 / 9:00 pm – 10:00 pm (#1)

## REGULAR PROGRAMS

### Monday

Rachel Khoo's Kitchen Notebook: London /

11:00 pm – 11:30 pm (#2) <sup>2</sup> From the 8<sup>th</sup>

<sup>2</sup> Rerun: Sunday, 6:30 pm – 6:55 pm

### Tuesday

Design Talks +plus / 11:00 pm – 11:30 pm (#2) <sup>2</sup> Rerun: Wednesday, 10:25 am – 10:55 am

### Friday

Lectures by Professor Diamond / 9:00 pm – 9:30 pm (#2) <sup>2</sup> From the 5<sup>th</sup>

Documentary Programs / 10:00 pm – 10:50 pm (#2) <sup>2</sup> Except the 12<sup>th</sup> & the 19<sup>th</sup>

### Saturday

Dramatic Earth (Documentary Program) / 7:00 pm – 7:45 pm (#2)

<sup>2</sup> Rerun: Monday, midnight – 12:45 am

## DRAMAS

### Friday

School of Rock ('16 USA) / 7:25 pm – 7:50 pm (#2)

### Saturday

The Thundermans 3 ('13- USA) / 6:25 pm – 6:50 pm (#2)

### Sunday

オクニヨ ('16 South Korea) / 11:00 pm – midnight (#1)

## ANIMATIONS

### Saturday

Curious George / 8:35 am – 9:00 am (#2)

SpongeBob SquarePants / 6:00 pm – 6:25 pm (#2)

### Sunday

Thomas & Friends / 5:30 pm – 5:50 pm (#2)

## MOVIES

7<sup>th</sup> The Taking of Pelham One Two Three / '79 USA / 1:50 am – 3:35 am (#8)

14<sup>th</sup> Swordfish / '01 USA / 2:10 am – 3:55 am (#8)

14<sup>th</sup> Thelma & Louise / '91 USA / 2:13 am – 4:00 am (#3)

28<sup>th</sup> Broken City / '12 USA / 1:50 am – 3:45 am (#8)

28<sup>th</sup> Crash / '04 USA / 2:08 am – 4:00 am (#3)

## SPORTS

© FIVB Women's Volleyball World Championship 2018 (#3)

<sup>2</sup> Broadcasted in Japanese only

1<sup>st</sup> Japan x Mexico / 7:00 pm – 9:00 pm

3<sup>rd</sup> Japan x Cameroon / 7:00 pm – 9:00 pm

4<sup>th</sup> Japan x Germany / 7:00 pm – 9:00 pm

7<sup>th</sup>, 8<sup>th</sup>, 10<sup>th</sup> & 11<sup>th</sup> Second Round / 7:00 pm – 9:00 pm

© Boxing <sup>2</sup> Broadcasted in Japanese only

7<sup>th</sup> Naoya Inoue (JP) x Juan Carlos Payano (DO); Kenshiro (JP) x Milan Melindo (PH) / 8:00 pm – 9:54 pm (#8)

© KIRIN Challenge Cup 2018 (#5)

<sup>2</sup> Broadcasted in Japanese only

12<sup>th</sup> Japan x Panama / 7:32 pm – 9:54 pm

16<sup>th</sup> Japan x Uruguay / 7:00 pm – 9:54 pm



Please feel free to contact to the International Exchange Lounge at 082-247-9715.

E-Mail: [golounge@pcf.city.hiroshima.jp](mailto:golounge@pcf.city.hiroshima.jp)

October 2018

# Concerts & Plays



## Ticket Offices

- j EDION Play Guide (SUNMALL, 1F) (Kamiya-cho, Naka-ku; Tel. 247-5111)
- k YAMAHA Music (Kamiya-cho, Naka-ku; Tel. 244-3779 Closed on the 1<sup>st</sup> & the 3<sup>rd</sup> Wednesdays)
- l Hiroshima Yume Plaza (Hondori, Naka-ku; Tel. 544-1122 Closed on Wednesdays)
- m Kawai Hiroshima (2-2-6 Kamiya-cho, Naka-ku; Tel. 243-9291 Closed on Mondays)
- n Fukuya Department Store, Hatchobori (7F) (Ebisu-cho, Naka-ku; Tel. 246-6111)
- o Fukuya Department Store, Hiroshima Station (7F) (Matsubara-cho, Minami-ku; Tel. 568-3111)
- p Alpark Tenmaya (3F) (Inokuchi-myojin, Nishi-ku; Tel. 501-1111)
- q Hiroshima Arts Gakki (Hatchoboru, Naka-ku; Tel. 227-6601)

Date / Starting Time (Opening Time) / Venue / Ticket Price / Tickets Go on Sale Date / Ticket Offices / Inquiries

♪ Event schedules are subject to change.

Please contact the event office before you go. ♪

## October

### € **Bunraku (traditional Japanese puppet play)**

3<sup>rd</sup> Wednesday / ☎ 1:30 pm (1:00 pm) • 6:30 pm (6:00 pm) / JMS Aster Plaza / Stalls-¥4,500  
Balcony seats-¥2,500 Wheel chair seats-¥4,500  
2 Wheel chair seats will be sold at JMS Aster Plaza only. / Now on sale / JMS Aster Plaza, • †, Chugoku Shimbun, Ticket PIA, Lawson / JMS Aster Plaza 082-244-8000

### € **Classic Guitar Joint Concert vol. 3**

3<sup>rd</sup> Wednesday / 7:00 pm (6:30 pm) / Higashi Kumin Bunka Center / Advance-¥1,000 At the door-¥1,500 / Please ask the concert organizer for ticket information. / 090-2095-8545 (Matsue), E-mail: bukky\_guit@yahoo.co.jp (Ibuki)

### € **Amaral Vieira Piano Recital**

3<sup>rd</sup> Wednesday / 7:00 pm / Hiroshima Bunka Gakuen HBG Hall / A-¥5,300 B-¥4,300 / Now on sale / • †, Lawson, Ticket PIA / MIN-ON Hiroshima 082-567-0585

### € **Marimba Paradise Vol. 2:**

**Marimba & Percussion Ensemble Concert**  
4<sup>th</sup> Thursday / ☎ 2:00 pm (1:30 pm) • 7:00 pm (6:30 pm) / Nishi Kumin Bunka Center / Advance-¥1,500 At the door-¥2,000 (All tickets are for non-reserved seats.) / Now on sale / JMS Aster Plaza, Kumin Bunka Centers / Nishi Kumin Bunka Center 082-234-1960 (closed on Mondays)

### € **prapatat.: Regular Concert 2018**

6<sup>th</sup> Saturday / 1:00 pm (12:30 pm) / Minami Kumin Bunka Center / Junior high school students and above-¥1,500 Elementary school students and under-Free (All tickets are for non-reserved seats.) / Please ask the concert organizer for ticket information. / 090-7597-2690, E-mail: prapatatnet@gmail.com (Ogata)

### € **Tomotaka Okamoto: Concerto del Sopranista 2018**

6<sup>th</sup> Saturday / 2:00 pm (1:30 pm) / Hatsukaichi Bunka Hall Sakurapia / ¥4,000 / Now on sale / • , Sakurapia, Chugoku Shimbun, Ticket PIA, Lawson / Hatsukaichi Bunka Hall Sakurapia 0829-20-0111

### € **Misa Shitaka Piano Recital**

6<sup>th</sup> Saturday / 3:00 pm (2:30 pm) / Hamamatsu Piano-sha 3F, Hall / Advance-¥3,000 At the door-¥3,300 / Now on sale / e+, FamilyMart, Hamamatsu Piano-sha, • / Nakayama Midori Art House 080-1359-0925

### € **Ensemble DEMAIN:**

#### **The 23<sup>rd</sup> Regular Concert**

6<sup>th</sup> Saturday / 6:30 pm (6:00 pm) / Hiroshima Kenmin Bunka Center / ¥500 / Please ask the concert organizer for ticket information. / 082-254-6015 (Kojima), 082-284-5624 (Tokunaga)

### € **MKU Brass: The 6<sup>th</sup> Regular Concert "La Mer"**

7<sup>th</sup> Sunday / 2:00 pm (1:30 pm) / Minami Kumin Bunka Center / Free admission / MKU Brass 090-5371-1139 (Mizuno)

Please feel free to contact the International Exchange Lounge at 082-247-9715.

E-mail: [golounge@pcf.city.hiroshima.jp](mailto:golounge@pcf.city.hiroshima.jp)

October 2018

☞ **Choir "Polifonia Sacra":**

**The 26<sup>th</sup> Regular Concert**

7<sup>th</sup> Sunday / 2:00 pm (1:30 pm) / Elisabeth University of Music, Cecilia Hall / ¥800 / Please ask the concert organizer for ticket information. / 090-9733-7990 (Tanabe)

NEW!

☞ **An Evening of Italian Opera V:**

**La Traviata (by G. Verdi)**

7<sup>th</sup> Sunday / 2:00 pm (1:30 pm) / JMS Aster Plaza / ¥3,000 (All tickets are for non-reserved seats.) / Now on sale / JMS Aster Plaza / Executive Committee 090-7972-8103 (Katayama)

NEW!

☞ **Hiroshima Symphony Orchestra:**

**The 384<sup>th</sup> Subscription Concert**

(Smetana: *Blaník, from Má Vlast*; Bruckner (arr. Skrowaczewski for string orchestra): *String Quintet in F major, WAB 112: III. Adagio*; Dvořák (arr. Tatsuhiko Nakahara): *Songs My Mother Taught Me (orchestra version)*; Husa: *Music for Prague 1968*)

7<sup>th</sup> Sunday / 3:00 pm (2:00 pm) / Hiroshima Bunka Gakuen HBG Hall / S-¥5,200 A-¥4,700 B-¥4,200 Students-¥1,500 (Student tickets are only sold at the Hiroshima Symphony Orchestra Office.) / Now on sale / j , n o † ^ , Lawson, Ticket PIA, Chugoku Shimbun & Hiroshima Symphony Orchestra Office / Hiroshima Symphony Orchestra Office 082-532-3080 E-mail: info@hirokyo.or.jp  
- Conductor: Tatsuya Shimono

☞ **Ensemble H [ákka]**

8<sup>th</sup> Sunday / 4:00 pm (3:45 pm) / Higashi Kumin Bunka Center / Advance: Adults-¥2,000 University, senior high & junior high school students-¥1,000 Elementary school students-¥500 Pair tickets-¥3,600; At the door: Adults-¥2,500 University, senior high & junior high school students-¥1,500 Elementary school students-¥800 / Now on sale / „ ^ , Higashi Kumin Bunka Center / Ensemble H [ákka] Office 090-9764-1842, E-mail: akka@ensemble-h.jp

☞ **Chihiro Hosokawa Jazz Live 2018**

8<sup>th</sup> Monday / 4:30 pm (4:00 pm) / Hatsukaichi Bunka Hall Sakurapia / ¥3,500 / Now on sale / • , Ticket PIA, Lawson, Sakurapia / Hatsukaichi Bunka Hall Sakurapia 0829-20-0111

☞ **Koto Unit "Sha Sha Ten":**

**Music Drama "A-UN"**

11<sup>th</sup> Thursday / u 2:00 pm (1:30 pm) v 6:30 pm (6:00 pm) / JMS Aster Plaza / Advance-¥3,000 At the door-¥3,500 / Now on sale / Please ask the concert organizer for ticket information. / 090-7370-1829 (Kinomoto)

- Koto is a traditional Japanese harp.

NEW!

☞ **Jake Shimabukuro:**

**The Greatest Day Tour in Japan 2018**

13<sup>th</sup> Saturday / 5:00 pm (4:00 pm) / Blue Live Hiroshima / ¥7,300 / Now on sale / Lawson, Ticket PIA, e+ / Yumebanchi Hiroshima 082-249-3571 (weekdays, 11 am – 7 pm)  
- Jake Shimabukuro is an ukulele player from Hawaii.

☞ **Mayo Amagai Soprano Concert**

13<sup>th</sup> Saturday / 6:00 pm (5:30 pm) / Hatsukaichi Bunka Hall Sakurapia / Advance: S-¥3,500 A-¥3,000 B-¥2,500; At the door: S-¥4,000 A-¥3,500 B-¥3,000 <sup>2</sup> Day-of-performance tickets will not be sold if advance tickets are sold out. / Now on sale / FM Hatsukaichi (youme town Hatsukaichi, 3F), Sakurapia / FM Hatsukaichi 0829-32-0500

☞ **Hiroshima Opera Ensemble: Mefistofele**

☞ 13<sup>th</sup> Saturday • 14<sup>th</sup> Sunday / ☞ the 13<sup>th</sup>: 6:00 pm (5:15 pm) • the 14<sup>th</sup>: 2:00 pm (1:15 pm) / JMS Aster Plaza / Advance: Adults-¥6,000 High school students and under-¥3,000; At the door: Adults-¥6,500 High school students-¥3,500 / Now on sale / JMS Aster Plaza, • † ‡ , Ticket PIA / Hiroshima Opera Ensemble Office 082-294-6144 or 090-3630-1561, E-mail: m.kohn4-9@tune.ocn.ne.jp  
- This will be played in Italian with Japanese subtitles.

☞ **Electronic Acoustic x Piano:**

**Sumihisa Arima Workshop & Concert**

14<sup>th</sup> Sunday / Workshop: 2:00 pm – 3:30 pm; Concert: 4:00 pm – 5:00 pm / JMS Aster Plaza / Advance-¥2,500 At the door-¥3,000 Workshop-Free / Now on sale / • / Sanyo Tokui Rengo E-mail: tokui.ren5@gmail.com, 080-1922-7477, 090-9764-1842

NEW!

☞ **Try a Dance vol. 15**

14<sup>th</sup> Sunday / 2:00 pm (1:30 pm) / JMS Aster Plaza / ¥1,000 (All tickets are for non-reserved seats.) / Now on sale / JMS Aster Plaza / JMS Aster Plaza 082-244-8000 E-mail: naka-cs@cf.city.hiroshima.jp

☞ **Noriko Suguri (piano) & Stamitz Quartet**

14<sup>th</sup> Sunday / 3:00 pm (2:30 pm) / Gewand Halle / Advance: Adults-¥3,000 Students-¥2,000; At the door: Adults-¥3,500 Students-¥2,500 / Now on sale / • „ / 090-7992-4282, E-mail: n\_oriko@sj8.so-net.ne.jp (Suguri)

NEW!

☞ **Yukai Band: Wind Ensemble Concert**

14<sup>th</sup> Sunday / 3:00 pm (2:30 pm) / Aki Kumin Bunka Center / Adults-¥1,000 Students-¥500 Elementary school students and under-Free (All tickets are for non-reserved seats.) / Please ask the

Please feel free to contact the International Exchange Lounge at 082-247-9715.

E-mail: golounge@pcf.city.hiroshima.jp

October 2018

concert organizer for ticket information. / 090-2865-3132 (Morita)

### € Meiko Miyazawa Piano Recital 2018

19<sup>th</sup> Friday / 6:30 pm (6:00 pm) / Hiroshima Kenmin Bunka Center / Advance: Adults-¥4,000 High school students and under-¥2,000; At the door: Adults-¥4,500 High school students and under-¥2,500 (all non-reserved seats) / Now on sale / Lawson / Sanyodo Kikaku 080-3030-9130 (Otagaki)

NEW!

### € Chaleur Wood Quintet Concert Vol. 4

19<sup>th</sup> Friday / 6:45 pm (6:15 pm) / Elisabeth University of Music, Xavier Hall / Adults-¥2,000 High school students and under-¥1,000 / Now on sale / • ^ / Ogihara Music Planning 082-962-8660 E-mail: info@ogiharamp.co.jp

NEW!

### € Marimba & Percussion Trio "Calla lily": Family Concert

20<sup>th</sup> Saturday / 10:30 am (10:00 am) / Nishi Kumin Bunka Center / Free admission / Nishi Kumin Bunka Center 082-234-1960 (closed on Mondays) E-mail: nishi-cs@cf.city.hiroshima.jp

### € Steude Quartet Japan Tour 2018

20<sup>th</sup> Saturday / 2:00 pm (1:30 pm) / Kure City Bunka Hall / S-¥4,000 A-¥3,500 Students-¥1,080 / Now on sale / • †, Chugoku Shimbun, Lawson, Ticket PIA, Seven-Eleven / Kure City Bunka Hall 0823-25-7878 (8:30 am – 8 pm)

NEW!

### € Ensemble Chiaro: The 21<sup>st</sup> Regular Concert

20<sup>th</sup> Saturday / 4:00 pm (3:30 pm) / Higashi Kumin Bunka Center / Free admission / 080-1939-9436, E-mail: maestro@ccv.ne.jp (Yoshimura)  
- This is a mandolin concert.

### € Deep Purple "The Long Goodbye"

20<sup>th</sup> Saturday / 6:00 pm (5:30 pm) / Ueno Gakuen Hall / S-¥15,000 A-¥14,000 / Now on sale / Lawson, e+, Ticket PIA, • / Yumebanchi Hiroshima 082-249-3571

### € The Concert of Cultural Relationship between France and Japan: Traditional Japanese Music Concert

21<sup>st</sup> Sunday / 2:00 pm (1:30 pm)

#### PROGRAMS:

2:00 pm – 3:00 pm	Lecture
3:15 pm – 4:45 pm	Workshop
5:15 pm – 6:15 pm	Concert with narration
6:30 pm – 8:00 pm	Main concert

/ Hatsukaichi Bunka Hall Sakurapia / Lecture & workshop: Adults-¥2,000 Students-¥1,500; Concert with narration & main concert: Adults-

¥2,000 Students-¥1,500; All program tickets: Adults-¥3,000 Students-¥2,000 Pair tickets-¥5,000 / Now on sale / • , Ticket PIA, Lawson, Sakurapia / Hatsukaichi Bunka Hall Sakurapia 0829-20-0111

### € Opera Ensemble Concert

NEW!

21<sup>st</sup> Sunday / 7:00 pm (6:30 pm) / Nishi Kumin Bunka Center / Free admission / 080-3019-0165 (Sasagawa), 080-3000-8815 (Kanemoto), E-mail: hyou.edu@gmail.com

### € Hiroshima Chamber Soloists Concert Vol. 16

22<sup>nd</sup> Monday / 6:45 pm (6:00 pm) / Hiroshima Kenmin Bunka Center / Adults: Advance-¥4,000 At the door-¥4,500; Students-¥2,000 / Now on sale / Hiroshima Kenmin Bunka Center, • ... † / 082-252-4721

### € K-Ballet Company: Romeo & Juliet

23<sup>rd</sup> Tuesday / 6:30 pm (6:00 pm) / Hiroshima Bunka Gakuen HBG Hall / SS-¥18,000 S-¥15,000 A-¥11,000 B-¥8,000 / Now on sale / Seven-Eleven, • † / RCC 082-222-1133

### € Elisabeth University of Music Concert Series: The 77<sup>th</sup> Regular Concert

27<sup>th</sup> Saturday / 3:00 pm (2:30 pm) / Elisabeth University of Music, Cecilia Hall / ¥1,000 (all non-reserved seats) / Now on sale / Elisabeth University of Music, Ticket PIA / Elisabeth University of Music 082-225-8004 E-mail: enso01@eum.ac.jp

### € S\*\*t kingz "The Library"

Ⓔ 27<sup>th</sup> Saturday • 28<sup>th</sup> Sunday / Ⓔ the 27<sup>th</sup>: • 1:00 pm , 6:00 pm • the 28<sup>th</sup>: Noon / JMS Aster Plaza / ¥6,500 / Now on sale / Lawson, Ticket PIA, e+ / TSS Office 082-253-1010 (weekdays, 10 am – 6 pm); Candy Promotion Hiroshima 082-249-8334 (weekdays, 11 am – 6:30 pm)

NEW!

### € Petri Kumela Classical Guitar Recital

28<sup>th</sup> Sunday / 6:45 pm (6:30 pm) / Higashi Kumin Bunka Center / Adults: Advance-¥2,500 At the door-¥3,000; High school students and under-¥1,500 / Now on sale / Higashi Kumin Bunka Center, Hiroshima Guitar Association / Higashi Kumin Bunka Center 082-264-5551 (closed on Monday), Hiroshima Guitar Association E-mail: bukky\_guit@yahoo.com (Ibuki)



Please feel free to contact the International Exchange Lounge at 082-247-9715.

E-mail: golounge@pcf.city.hiroshima.jp

October 2018

☎ **Hiroshima Symphony Orchestra:  
Bouquet of Music HSO Masterpiece Concert  
~ Autumn ~**

(Haydn: *Trumpet Concerto, in E-flat major, Hob. VIIe: 1;*  
Liszt: *Les Preludes, S97/R414;* Sibelius: *Symphony No. 2  
in D major, Op. 43*)

28<sup>th</sup> Sunday / 3:00 pm (2:00 pm) / International  
Conference Center Hiroshima, Phoenix Hall / S-  
¥4,200 Pair tickets (S seats)-¥6,400 A-¥3,200  
B-¥2,200 Students-¥1,500 (Student tickets are only  
sold at the Hiroshima Symphony Orchestra Office.) /  
Now on sale / j , n o t ^ , Lawson, Ticket PIA,  
Chugoku Shimbun & Hiroshima Symphony  
Orchestra Office / Hiroshima Symphony Orchestra  
Office 082-532-3080 E-mail: info@hirokyo.or.jp  
- Conductor: Gen Ohta / Trumpet: Uwe Komischke /  
Navigator: Shogo Kariyazaki

☎ **An Evening of Flute Concert**

NEW!

29<sup>th</sup> Monday / 6:45 pm (6:15 pm) / Elisabeth  
University of Music, Cecilia Hall / Advance: Adults-  
¥3,000 Senior & junior high school students-  
¥1,000; At the door: Adults-¥3,500 Senior &  
junior high school students-¥1,500 / Now on sale /  
• ^ / Flute Concord Hiroshima 090-4108-0706  
(Oshiro), 090-7126-8083 (Hidaka), 090-9508-0047  
(Miyamoto)

- This is a flute concert by four flutists who are  
members of NHK Symphony Orchestra, Tokyo.

**November**

☎ **Taro Hakase Concert Tour 2018**

2<sup>nd</sup> Friday / 6:30 pm (6:00 pm) / Hiroshima Bunka  
Gakuen HBG Hall / ¥7,800 / Now on sale /  
Lawson, Ticket PIA, e+ / Candy Promotion  
Hiroshima 082-249-8334

☎ **Keiko Mandai Flute Recital**

NEW!

4<sup>th</sup> Sunday / 2:30 pm (2:00 pm) / Elisabeth  
University of Music, Xavier Hall / Advance: Adults-  
¥3,000 Students-¥1,500; At the door: Adults-  
¥3,500 Students-¥2,000 / Now on sale / e+, • /  
080-1904-8428, E-mail: mandai@eum.ac.jp (Mandai)

☎ **Masaki Motita Tuba Concert**

NEW!

4<sup>th</sup> Sunday / 4:00 pm (3:30 pm) / Aki Kumin Bunka  
Center / Adults-¥1,500 Students-¥1,000  
Elementary school students and under-Free (All  
tickets are for non-reserved seats.) / Please ask the  
concert organizer for ticket information. / 090-  
2865-3132 (Morita)



☎ **Autumn Classical Music Concert**

5<sup>th</sup> Monday / 7:00 pm (6:30 pm) / lifeone221 Hall /  
Advance-¥3,000 At the door-¥3,500 / Ticket  
information & inquiries: lifeone music 082-922-  
0028, E-mail: lifeone@cyber.ocn.ne.jp

☎ **Ocarina Concert**

7<sup>th</sup> Wednesday / 2:00 pm (1:30 pm) / Higashi  
Kumin Bunka Center / Advance-¥2,500 At the  
door-¥3,000 / Now on sale / Higashi Kumin Bunka  
Center / 090-1686-4491 (Nakahara) E-mail:  
c.music.info@gmail.com

☎ **Kodo – Meguru –**

9<sup>th</sup> Friday / 6:30 pm (6:00 pm) / JMS Aster Plaza /  
S-¥6,000 A-¥4,000 / Now on sale / Lawson,  
Ticket PIA, e+, Seven-Eleven, • † / TSS Office  
082-253-1010 (weekdays, 10 am – 6 pm)  
- Kodo is a taiko (traditional Japanese drums)  
performance company.

☎ **Arc-en-ciel: Piano Concert 24<sup>e</sup>**

NEW!

10<sup>th</sup> Saturday / 3:00 pm (2:30 pm) / Gewand Halle /  
Advance: Adults-¥2,500 Students-¥1,000; At the  
door: Adults-¥3,000 Students-¥1,500 / Now on  
sale / • „ / 090-5733-0516 (Shizuma), 090-4658-  
8813 (Makino)

☎ **The 70<sup>th</sup> Anniversary Concert Series:  
Martin Hughes Piano Recital**

NEW!

10<sup>th</sup> Saturday / 6:00 pm (5:30 pm) / Elisabeth  
University of Music, Xavier Hall / ¥1,000 (All  
tickets are for non-reserved seats.) / Now on sale /  
Elisabeth University of Music, Ticket PIA, • † /  
Elisabeth University of Music 082-225-8004 E-  
mail: enso01@eum.ac.jp

☎ **Song & Dance 65 by Gekidan Shiki**

11<sup>th</sup> Sunday – 16<sup>th</sup> Friday (except the 13<sup>th</sup>) / Ueno  
Gakuen Hall / S-¥8,640 A-¥6,480 B-¥3,240 /  
Now on sale / Shiki On-Line Ticket:  
http://489444.com; Shiki Reservation Center: 0120-  
489444 (10 am – 6 pm) / Gekidan Shiki Hiroshima  
Office 082-503-3411 (Mon. – Sat. except national  
holidays) - Gekidan Shiki (Shiki Theatre Company) is  
one of the famous theater companies in Japan.

This musical will be played in Japanese.

2 Time Schedule 2

	5:30 pm	
	6:30 pm	
	1:30 pm	
	1:30 pm	6:30 pm
	1:30 pm	

Please feel free to contact the International Exchange Lounge at 082-247-9715.

E-mail: golounge@pcf.city.hiroshima.jp

October 2018

### € Rustavi Ensemble from Georgia

13<sup>th</sup> Tuesday / ☎ 2:00 pm • 6:30 pm /  
Hiroshima Bunka Gakuen HBG Hall / A-¥7,500  
B-¥6,500 Students-¥2,700 (day-of-performance  
ticket only, student ID required) / Now on sale /  
• †, Lawson, Ticket PIA / MIN-ON Hiroshima  
082-567-0585

### € Modern Tango Quintet with So Kitamura: Piazzolla Tango Night 2018

☎ 14<sup>th</sup> Wednesday • 15<sup>th</sup> Thursday / 7:30 pm  
(7:00 pm) / Hiroshima Live Juke / ¥4,000 (80 seats)  
/ Reservations & inquiries 082-249-1930, E-mail:  
mail@live-19-juke.com

### € Hiroshima Symphony Orchestra: The 385<sup>th</sup> Subscription Concert

(*Brahms: Violin Concerto in D major, op. 77; Brahms:  
Symphony No. 4 in E major, op. 98*)  
16<sup>th</sup> Friday / 6:45 pm (5:45 pm) / Hiroshima Bunka  
Gakuen HBG Hall / S-¥6,200 A-¥5,700 B-  
¥5,200 Students-¥1,500 (Student tickets are only  
sold at the Hiroshima Symphony Orchestra Office.) /  
Now on sale / j , n o † ^ , Lawson, Ticket PIA,  
Chugoku Shimbun & Hiroshima Symphony  
Orchestra Office / Hiroshima Symphony Orchestra  
Office 082-532-3080 E-mail: info@hirokyo.or.jp  
- Conductor: Christian Arming / Violin: Akiko Suwanai

### € The 70<sup>th</sup> Anniversary Concert Series: Memorial Concert

22<sup>nd</sup> Thursday / 11:00 am – noon (10:30 am) /  
Elisabeth University of Music, Cecilia Hall / Free  
admission / Elisabeth University of Music 082-  
225-8004 E-mail: enso01@eum.ac.jp

NEW!

### € Ensemble LAT Concert

23<sup>rd</sup> Friday / 3:00 pm / Higashi Kumin Bunka  
Center / ¥1,000 (All tickets are for non-reserved  
seats.) / Now on sale / • , Higashi Kumin Bunka  
Center / M&K 090-8714-7730

NEW!

### € Gamarjobat: Silent Comedy Japan Tour 2018

24<sup>th</sup> Saturday / 6:00 pm (5:30 pm) / Hatsukaichi  
Bunka Hall Sakurapia / S-¥6,000 A-¥5,000 /  
Now on sale / Lawson, Ticket PIA, e+, • / Candy  
Promotion 082-249-8334 (weekdays, 11:00 am –  
6:30 pm)

### € Autumn Chamber Music Concert

25<sup>th</sup> Sunday / 2:00 pm (1:30 pm) / lifeone221 Hall /  
Advance-¥3,500 At the door-¥4,000 / Now on  
sale / Ticket information & inquiries: 082-922-0028,  
E-mail: lifeone@cyber.ocn.ne.jp

### € Monkey Majik Tour 2018 ~Singles Collection~

27<sup>th</sup> Tuesday / 7:00 pm (6:15 pm) / Hiroshima  
Club Quattro / Advance-¥5,500 Premium area-  
¥9,400 / Now on sale / e+, Ticket PIA, Lawson, • ,  
Tower Records Hiroshima / Yumebanchi Hiroshima  
082-249-3571

### € Marimba Paradise Vol. 3: Yukiko Ishihara Marimba Concert

29<sup>th</sup> Thursday / ☎ 2:00 pm (1:30 pm) • 7:00 pm  
(6:30 pm) / Nishi Kumin Bunka Center / Advance-  
¥1,500 At the door-¥2,000 (All tickets are for  
non-reserved seats.) / Now on sale / JMS Aster  
Plaza, Kumin Bunka Centers / Nishi Kumin Bunka  
Center 082-234-1960 (closed on Mondays)

## December

### € Disney on Classic 2018: Find Your Hero

2<sup>nd</sup> Sunday / 6:00 pm (5:00 pm) / Hiroshima Bunka  
Gakuen HBG Hall / S-¥8,300 A-¥6,700 / Now  
on sale / Lawson, Ticket PIA, e+, • / Union Music  
Office 082-247-6111 (weekdays, 10:30 am – 6:30 pm)

### € Hiroshima Symphony Orchestra, Discovery Series: Schubert Symphonien Zyklus vol. 7

(*Suppé: Leichte Kavallerie, Ouverture; Schubert:  
Symphonie Nr. 7 h-moll, D759 "Unvollendete";  
Schönberg: Verklärte Nacht op. 4*)  
7<sup>th</sup> Friday / 6:45 pm (5:45 pm) / JMS Aster Plaza /  
S-¥5,200 A-¥4,200 B- ¥3,200 Students-  
¥1,000 (Student tickets are only sold at the Hiroshima  
Symphony Orchestra Office.) / From Sunday,  
October 7 (from Tuesday, October 9 at the  
Hiroshima Symphony Orchestra Office) /  
j , n o † ^ , Lawson, Ticket PIA, Chugoku  
Shimbun, JMS Aster Plaza & Hiroshima Symphony  
Orchestra Office / Hiroshima Symphony Orchestra  
Office 082-532-3080 E-mail: info@hirokyo.or.jp  
- Conductor: Tatsuya Shimono

### € Christmas Charity Concert

12<sup>th</sup> Wednesday / 6:30 pm (6:00 pm) / Elisabeth  
University of Music, Cecilia Hall / ¥1,000 (All  
tickets are for non-reserved seats.) / Now on sale /  
Elisabeth University of Music, Ticket PIA, • † /  
Elisabeth University of Music 082-225-8004 E-  
mail: enso01@eum.ac.jp

NEW!

### € King Crimson: Uncertain Times

14<sup>th</sup> Friday / 7:00 pm (6:00 pm) / Hiroshima Bunka  
Gakuen HBG Hall / SS-¥20,000 S-¥16,000 /  
Now on sale / Lawson, e+, Ticket PIA, • /  
Yumebanchi Hiroshima 082-249-3571 (Mon. –  
Fri., 11 am – 7 pm); TSS 082-253-1010 (Mon. –  
Fri., 10 am – 6 pm)

Please feel free to contact the International Exchange Lounge at 082-247-9715.

E-mail: golounge@pcf.city.hiroshima.jp

October 2018

### € Yoshie Ueno Flute Recital: Door to the 20<sup>th</sup> Century Classical Music

14<sup>th</sup> Friday / 7:00 pm (6:30 pm) / JMS Aster Plaza / Advance: Adults-¥2,500 Students-¥1,500; At the door: Adults-¥3,000 At the door-¥2,000 (all non-reserved seats) / Now on sale / • †, JMS Aster Plaza, Ticket PIA, Lawson, Chugoku Shimbun / Hiroshima Opera and Music Promotion Committee 082-244-8000

NEW!

### € Toshimitsu Kamigaichi Guitar Concert

15<sup>th</sup> Saturday / 6:30 pm (6:00 pm) / Elisabeth University of Music, Cecilia Hall / Advance: Adults-¥3,000 Students-¥2,000; At the door: Adults-¥3,500 Students-¥2,500 / Now on sale / • / Ticket reservations & inquiries: Executive Committee 080-1647-6728 E-mail: gaichiguitar@me.com

### € *Kyogen* by Mansaku Nomura

19<sup>th</sup> Wednesday / ☐ 2:30 pm • 7:00 pm / JMS Aster Plaza / S-¥4,500 A-¥3,000 B-¥2,000 Wheel chair seats-¥3,000 / Now on sale / j †, JMS Aster Plaza, Chugoku Shimbun, Ticket PIA, Lawson / JMS Aster Plaza 082-244-8000  
 - This is a traditional Japanese performing art.

### € Noritaka Ito Piano Recital

24<sup>th</sup> Monday / 2:00 pm (1:30 pm) / Kawai Hiroshima Music Salon 'Pace' / Advance-¥3,000 At the door-¥3,500 (50 seats) / Now on sale / „ / Mimi no Sora 090-7574-3474, E-mail: soranomimi2015@gmail.com

### € Hiroshima Symphony Orchestra: The 382<sup>nd</sup> Subscription Concert <Rescheduled Concert>

(*Toshio Hosokawa: Meditation – to the victims of Tsunami 3.11 –; Messiaen: le Tombeau resplendissant; Stravinsky: L'Oiseau de feu (1910 Edition)*)  
 29<sup>th</sup> Saturday / 3:00 pm (2:00 pm) / Hiroshima Bunka Gakuen HBG Hall / S-¥5,200 A-¥4,700 B- ¥4,200 Students-¥1,500 (Student tickets are only sold at the Hiroshima Symphony Orchestra Office.) / Now on sale / j , n o † ^ , Lawson, Ticket PIA, Chugoku Shimbun & Hiroshima Symphony Orchestra Office / Hiroshima Symphony Orchestra Office 082-532-3080 E-mail: info@hirokyo.or.jp  
 - Conductor: Jun Märkl  
 - This is the rescheduled concert. Tickets for the previously scheduled on July 7 will be honored at the December 29<sup>th</sup> concert.

## January, 2019

### € Disney Hawaiian Concert 2019 in Hiroshima

18<sup>th</sup> Friday / 6:30 pm (5:45 pm) / Hiroshima Bunka Gakuen HBG Hall / S-¥9,500 A-¥8,500 / Now on sale / Rakuten Ticket, e-get, e+, Lawson, Ticket PIA, Seven-Eleven, • / Hiroshima TV Disney Office 082-263-5599 (weekdays, 10 am – 6 pm)

NEW!

### € Vienna Walzer Orchestra

10<sup>th</sup> Thursday / 6:30 pm (6:00 pm) / JMS Aster Plaza / ¥6,000 / Now on sale / Koransha Ticket Center, Ticket PIA, Lawson, • † ‡ / Koransha Ticket Center 050-3776-6184 (weekdays, 10 am – 6 pm), HOME Event Center 082-221-7116 (weekdays, 10 am – 5 pm)

NEW!

### € Hiroshima Symphony Orchestra: The 386<sup>th</sup> Subscription Concert

(*J. Strauss II: Liebeslieder op. 114; Mozart: Violin Concerto No. 4 in D major, K.218; Mendelssohn: Symphony No. 4 in A major, op. 90 "Italian"*)  
 19<sup>th</sup> Saturday / 3:00 pm (2:00 pm) / Hiroshima Bunka Gakuen HBG Hall / S-¥5,200 A-¥4,700 B- ¥4,200 Students-¥1,500 (Student tickets are only sold at the Hiroshima Symphony Orchestra Office.) / From Monday, November 19 / j , n o † ^ , Lawson, Ticket PIA, Chugoku Shimbun & Hiroshima Symphony Orchestra Office / Hiroshima Symphony Orchestra Office 082-532-3080 E-mail: info@hirokyo.or.jp  
 - Solo & concert master: Volkhard Steude

### € Hiroshima Symphony Orchestra, Discovery Series: Schubert Symphonien Zyklus vol. 8

(*Schönberg: Violin Konzert op. 36; Schubert: Symphonie Nr. 8 C-dur, D944 "Die Große"*)  
 25<sup>th</sup> Friday / 6:45 pm (5:45 pm) / JMS Aster Plaza / S-¥5,200 A-¥4,200 B- ¥3,200 Students-¥1,000 (Student tickets are only sold at the Hiroshima Symphony Orchestra Office.) / From Sunday, November 25 (from Monday, November 26 at the Hiroshima Symphony Orchestra Office) / j , n o † ^ , Lawson, Ticket PIA, Chugoku Shimbun, JMS Aster Plaza & Hiroshima Symphony Orchestra Office / Hiroshima Symphony Orchestra Office 082-532-3080 E-mail: info@hirokyo.or.jp  
 - Conductor: Tatsuya Shimono  
 Violin: Tamaki Kawakubo



Please feel free to contact the International Exchange Lounge at 082-247-9715.

E-mail: [golounge@pcf.city.hiroshima.jp](mailto:golounge@pcf.city.hiroshima.jp)

October 2018

**February, 2019**

NEW!  
 ⑥ **Hiroshima Symphony Orchestra:**  
**Bouquet of Music HSO Masterpiece Concert**  
 ~ Winter ~

(David: *Trombone Concertino in E-flat Major, Op. 4*;  
 Richard Strauss: *Don Juan, Op. 20*; Ravel: *La Caise*;  
 Ravel: *Boléro*)

2<sup>nd</sup> Saturday / 3:00 pm (2:00 pm) / International  
 Conference Center Hiroshima, Phoenix Hall / S-  
 ¥4,200 Pair tickets (S seats)-¥6,400 A-¥3,200  
 B-¥2,200 Students-¥1,500 (Student tickets are only  
 sold at the Hiroshima Symphony Orchestra Office.) /  
 From Monday, October 29 / j , n o t ^ , Lawson,  
 Ticket PIA, Chugoku Shimbun & Hiroshima  
 Symphony Orchestra Office / Hiroshima  
 Symphony Orchestra Office 082-532-3080  
 E-mail: info@hirokyo.or.jp

- Conductor: Ryuichiro Sonoda  
 Trombone: Fabrice Millischer

NEW!  
 ⑥ **Hiroshima Symphony Orchestra:**  
**The 387<sup>th</sup> Subscription Concert**

(Humperdinck: *Hänsel und Gretel, Prelude*; Wagner  
 (orch. Mottl): *Wesendonck Lieder, WWV91*; Richard  
 Strauss: *Metamorphosen (Study for 23 solo strings),*  
*TrV290*; Humperdinck: *Hänsel und Gretel, Pantomime*)

6<sup>th</sup> Wednesday / 6:45 pm (5:45 pm) / Hiroshima  
 Bunka Gakuen HBG Hall / S-¥5,200 A-¥4,700  
 B- ¥4,200 Students-¥1,500 (Student tickets are only  
 sold at the Hiroshima Symphony Orchestra Office.) /  
 From Thursday, December 6 / j , n o t ^ ,  
 Lawson, Ticket PIA, Chugoku Shimbun &  
 Hiroshima Symphony Orchestra Office /  
 Hiroshima Symphony Orchestra Office 082-532-  
 3080 E-mail: info@hirokyo.or.jp

- Conductor: Tatsuya Shimono  
 Mezzo Soprano: Mihoko Fujimura

⑥ **Marimba Paradise Vol. 4:**  
**Marimba & Reading Concert**

7<sup>th</sup> Thursday / 2:00 pm (1:30 pm) • 7:00 pm  
 (6:30 pm) / Nishi Kumin Bunka Center / Advance-  
 ¥1,500 At the door-¥2,000 (all non-reserved seats)  
 / Now on sale / JMS Aster Plaza, Kumin Bunka  
 Centers / Nishi Kumin Bunka Center 082-234-  
 1960 (closed on Mondays)

⑥ **Sarah Alaijn Concert in Hiroshima 2019**

16<sup>th</sup> Saturday / 4:00 pm (3:15 pm) / JMS Aster Plaza  
 / SS-¥7,500 S-¥7,000 A-¥6,000 / From  
 Saturday, October 13 / Ticket PIA / HOME Event  
 Center 082-221-7116 (weekdays, 10 am – 5 pm)

NEW!  
 ⑥ **Hiroshima Symphony Orchestra:**  
**Music for Peace Concert**

(Graumner: *Sinfonia in F major, GWV 566*; Shostakovich:  
*Concerto for Piano, Trumpet, and String Orchestra in C*  
*minor, Op. 35*; Beethoven: *Symphony No. 7 in A major,*  
*Op. 92*)

24<sup>th</sup> Sunday / 3:00 pm / Hiroshima Bunka Gakuen  
 HBG Hall / S-¥5,000 A-¥4,000 Students-  
 ¥1,500 (Student tickets are only sold at the Hiroshima  
 Symphony Orchestra Office.) / From Wednesday,  
 October 24 / j , n o t ^ , Lawson, Ticket PIA,  
 Chugoku Shimbun & Hiroshima Symphony  
 Orchestra Office / Hiroshima Symphony Orchestra  
 Office 082-532-3080 E-mail: info@hirokyo.or.jp

- Conductor: Christian Arming / Timpani: Mathias  
 Müller / Jazz Paino: Makoto Ozone / Trumpet: Shoko  
 Kanai

**March, 2019**

NEW!  
 ⑥ **Hiroshima Symphony Orchestra:**  
**The 388<sup>th</sup> Subscription Concert**

(Dvořák: *Othello, Overture, op 93*; Tchaikovsky: *Violin*  
*Concerto in D major, op. 35*; Smetana (orch. George  
 Szell): *String Quartet No. 1 in E minor "From My Life"*)  
 3<sup>rd</sup> Sunday / 3:00 pm (2:00 pm) / Hiroshima Bunka  
 Gakuen HBG Hall / S-¥5,200 A-¥4,700 B-  
 ¥4,200 Students-¥1,500 (Student tickets are only  
 sold at the Hiroshima Symphony Orchestra Office.) /  
 From Thursday, January 3, 2019 (from Monday,  
 January 7, 2019 at the Hiroshima Symphony  
 Orchestra Office) / j , n o t ^ , Lawson, Ticket  
 PIA, Chugoku Shimbun & Hiroshima Symphony  
 Orchestra Office / Hiroshima Symphony Orchestra  
 Office 082-532-3080 E-mail: info@hirokyo.or.jp

- Conductor: Charles Olivieri-Munroe  
 Violin: Naoka Aoki



Please feel free to contact the International Exchange Lounge at 082-247-9715.

E-mail: golounge@pcf.city.hiroshima.jp

October 2018





# Event Halls

## ® Hiroshima Bunka Gakuen HBG Hall 広島文化学園 HBG ホール

(3-3 Kako-machi, Naka-ku, Hiroshima Tel. 082-243-8881)

† Take the No.24 bus bound for Yoshijima Eigyocho (吉島営業所) and get off at Kako-machi (加古町). Walking time to the venue is 2 minutes.

## ® Hiroshima Kenmin Bunka Center 広島県民文化センター

(1-5-3 Ote-machi, Naka-ku, Hiroshima Tel. 082-245-2311)

† Take a streetcar or a bus and get off at Hondori (本通) or Kamiya-cho (紙屋町). Walking time to the venue is 5 minutes.

## ® JMS Aster Plaza JMS アステールプラザ

(4-17 Kako-machi, Naka-ku, Hiroshima Tel. 082-244-8000)

† Take the No.24 bus bound for Yoshijima Eigyocho (吉島営業所) and get off at Kako-machi (加古町). Walking time to the venue is 2 minutes.

## ® Ueno Gakuen Hall 上野学園ホール

(19-1 Hakushima-kita-machi, Naka-ku, Hiroshima Tel. 082-223-6367)

† Take the Astramline bound for Koiki Koen-mae (広域公園前) or Chorakuji (長楽寺) Station and get off at Hakushima (白島) Station. Walking time to the venue is 3 minutes.

## ® Hiroshima Kokusai Kaigijo (International Conference Center Hiroshima), Phoenix Hall 広島国際会議場フェニックスホール

(1-5 Nakajima-cho, Naka-ku, Hiroshima Tel. 082-242-7777)

† Get on a Hiroshima Bus bound for Yoshijima and get off at Heiwa Kinenkoen (平和記念公園).

† From Chuden-mae (中電前) or Genbaku Dome-mae (原爆ドーム前) Streetcar Stop, walking time to the venue is 5 minutes.

## ® Hiroshima Club Quattro 広島クラブクアトロ

(10-1 Hondori, Naka-ku, Hiroshima (Hiroshima PARCO Hon-kan 10F) Tel. 082-542-2280)

† From Hatchobori (八丁堀) Streetcar Stop, walking time to the venue is 5 minutes.

## ® Hiroshima Green Arena 広島グリーンアリーナ

(4-1 Moto-machi, Naka-ku, Hiroshima Tel. 082-228-1111)

† From Kamiya-cho-nishi (紙屋町西) or Kamiya-cho-higashi (紙屋町東) Streetcar Stop, walking time to the venue is 5 minutes.

## ® Hiroshima Sun Plaza 広島サンプラザ

(3-1-1 Shoko Center, Nishi-ku, Hiroshima Tel. 082-278-5000)

† Take a train or streetcar to Miyajima and get off at JR Shin-inokuchi (新井口) Station (JR Sanyo Line) or Shoko Center-iriguchi (商工センター入り口) Streetcar Stops (Hiroden Miyajima Line). Walking time to the venue is 5 minutes.

## ® Elisabeth University of Music エリザベト音楽大学

(4-15 Nobori-machi, Naka-ku, Hiroshima Tel. 082-221-0918)

† From Kanayama-cho (銀山町) or Jogakuin-mae (女学院前) Streetcar Stop, walking time to the venue is 10 minutes.

## ® Higashi Kumin Bunka Center 東区民文化センター

(10-31 Higashi-kaniya-cho, Higashi-ku, Hiroshima Tel. 082-264-5551)

† From the Shinkansen Exit of the JR Hiroshima (広島) Station, walking time to the venue is 10 minutes.

Please feel free to contact the International Exchange Lounge at 082-247-9715.

E-mail: [golounge@pcf.city.hiroshima.jp](mailto:golounge@pcf.city.hiroshima.jp)

October 2018



® **Nishi Kumin Bunka Center 西区民文化センター**

(6-1 Yokogawa Shin-machi, Nishi-ku, Hiroshima Tel. 082-234-1960)

† From JR Yokogawa (横川) Station, walking time to the venue is 5 minutes.

® **Asaminami Kumin Bunka Center 安佐南区民文化センター**

(22-17 Nakasuji 1-chome, Asaminami-ku, Hiroshima Tel. 082-879-3060)

† From *Astramline* Nakasuji (中筋) Station, walking time to the venue is 5 minutes.

® **Saeki Kumin Bunka Center 佐伯区民文化センター**

(6-1-10 Itsukaichi-chuo, Saeki-ku, Hiroshima Tel. 082-921-7550)

† From Hiroshima Bus Center (*Sogo* Hiroshima, 3F), take a bus to Yakushigaoka-danchi (薬師が丘団地), Shikigaoka-danchi (四季が丘団地), Higashi-kannonndai-danchi (東観音台団地) or Ajinadai-kita (阿品台北) and get off at Saeki-kumin Bunka Center-mae (佐伯区民文化センター前). Walking time to the venue is 1 minute.

® **Aki Kumin Bunka Center 安芸区民文化センター**

(2-16 Funakoshi-minami 3-chome, Aki-ku, Hiroshima Tel. 082-824-1330)

† From JR Kaitaichi (海田市) Station (JR Sanyo Line), walking time to the venue is 5 minutes.

® **Blue Live Hiroshima ブルーライブ広島**

(3-12-69 Ujina Kaigan, Minami-ku, Hiroshima Tel. 082-250-5522)

† Take a streetcar for Hiroshima-ko (No. 1, 3 or 5) and get off at Kaigan-dori (海岸通). Walking time to the venue is 5 minutes.

® **Live Juke ライブジューク**

(Crystal Plaza 19F, Naka-machi, Naka-ku, Hiroshima Tel. 082-567-5011)

† From Takanobashi (鷹野橋) or Nisseki Byouin-mae (日赤病院前) Streetcar Stops, walking time to destination is 7 minutes.

® **lifeone221 hall lifeone221 ホール**

(2-2-1 Itsukaichi-chuo, Saeki-ku, Hiroshima-shi Tel.082-922-0028)

† Take a bus from JR Itsukaichi (五日市) Station (north exit) and get off at Itsukaichi-chuo 2-chome (五日市中央二丁目). Walking time to the venue is 5 minutes.

® **Kawai Hiroshima Concert Salon "Pace" カワイ広島コンサートサロン "パーチェ"**

(2-2-6 Kamiya-cho, Naka-ku, Hiroshima Tel. 082-243-9291)

† From Hondori (本通) Streetcar Stop, walking time to destination is 2 minutes.

® **Hiroshima Nagarekawa Church 広島流川協会**

(8-30 Kami-nobori-cho, Naka-ku, Hiroshima Tel. 082-221-1813)

† From Jogakuin-mae (女学院前) or Shukkeien-mae (縮景園前) Streetcar Stop, walking time to the venue is 5 minutes.

® **Hatsukaichi Bunka Hall Sakurapia はつかいち文化ホールさくらぴあ**

(1-11-1 Shimo-hera, Hatsukaichi City Tel. 0829-20-0111)

† Take a train on the JR Sanyo Line bound for Iwakuni and get off at JR Miyauchi Kushido (宮内串戸) Station. Walking time to the venue is 15 minutes.

† Take a streetcar on the Hiroden Miyajima Line and get off at Hatsukaichi Shiyakusho-mae (廿日市役所前). Walking time to the venue is 8 minutes.

® **Kure City Bunka Hall 呉市文化ホール**

(3-10-1 Chuo, Kure City Tel. 0823-25-7878)

† From JR Kure (呉) Station (JR Kure Line), walking time to the venue is 7 minutes.

Please feel free to contact the International Exchange Lounge at 082-247-9715.

E-mail: [golounge@pcf.city.hiroshima.jp](mailto:golounge@pcf.city.hiroshima.jp)

October 2018



**A: Adults   U: University Students   H: High School Students**  
**J: Junior High School Students   E: Elementary School Students**  
**S: Seniors (65 years old and above - Identification showing your date of birth is required.)**

<sup>2</sup> Generally, admission is allowed up to 30 min. prior to closing. <sup>2</sup>

### **Hiroshima Museum of Art**

Address: 3-2 Motomachi, Naka-ku, Hiroshima City  
Tel: 082-223-2530

Hours: 9:00 am – 5:00 pm  
<sup>2</sup> Open until 7:00 pm on Fridays during special exhibitions

Closed: Mondays (except during special exhibitions)  
URL: <http://www.hiroshima-museum.jp>

#### Special Exhibition

j **Masterpieces from the Bridgestone Museum of Art**

Period: Saturday, October 13 – Sunday, December 16

Admission Fee:  
A -¥1,400 (¥1,200), S-¥1,200,  
U&H-¥1,000 (¥800), J&E-¥600 (¥400)  
<sup>2</sup> Advance ticket prices shown in ( ).

#### Collection Exhibition

j **Modern European Paintings**  
Period: Year-round

### **Hiroshima City Museum of Contemporary Art**

Address: 1-1 Hijiyama Koen, Minami-ku, Hiroshima City  
Tel: 082-264-1121

Hours: 10:00 am – 5:00 pm  
Closed: Mondays (except national holiday) & October 9  
URL: <http://www.hcmca.cf.city.hiroshima.jp/>

#### Special Exhibition

j **Iri and Toshi Maruki: Understanding The Hiroshima Panels**

Period: Until Sunday, November 25  
Admission Fee: A-¥1,000 (¥800), U-¥700 (¥600), S&H-¥500 (¥400), J & under-Free  
<sup>2</sup> Advance ticket prices shown in ( ).  
<sup>2</sup> Free admission on November 3

#### Collection Exhibition

Admission Fee: A-¥360, U-¥270, S&H-¥170, J & under- Free  
<sup>2</sup> Holders of special exhibition admission tickets are also entitled to view the collection exhibition

j **2018 – 2: Collection Highlights & Special Feature: The Century with Mushroom Clouds / Prayer**

Period: Until Sunday, October 21

j **2018 – 3: Collection Highlights & Special Feature: Like a Face**

Period: Saturday, November 3 – Sunday, February 3, 2019

#### Video Art Program (Free admission)

j **A Window to the World [The 62<sup>nd</sup> Program]: Ayako Yoshimura**  
Period: Until Sunday, December 2

#### Hiroshima MOCA Monthly Workshop

**\$ This is an art program in which the museum selects one particular material and visitors are free to make anything with it. Reservations are not required. You can join the workshop on the event day of.**

Event Date: Once a month  
Time: j 10:00 am – noon  
k 2:00 pm – 4:00 pm  
Participation Fee: Free

### **Hiroshima Prefectural Art Museum**

Address: 2-22 Kaminobori-cho, Naka-ku, Hiroshima City

Tel: 082-221-6246  
Hours: 9:00 am – 5:00 pm  
<sup>2</sup> Open until 8:00 pm on Fridays (Apr. – Oct.)  
<sup>2</sup> Open until 7:00 pm on Fridays (Nov. – Mar.)

Closed: October 1  
URL: <http://www.hpam.jp/>

#### Special Exhibitions

j **Brueghel: 150 Years of an Artistic Dynasty**  
Period: Monday, October 8 – Sunday, December 16

Admission Fee: <sup>®</sup> Advance: A-¥1,300, U&H-¥800, J&E-¥400 <sup>®</sup> At the door: A-¥1,500, U&H-¥1,000, J&E-¥600  
<sup>2</sup> Advance tickets are sold at the museum, Seven-Eleven, major ticket offices in Hiroshima City until October 7.

Please feel free to contact the International Exchange Lounge at 082-247-9715.

E-mail: [golounge@pcf.city.hiroshima.jp](mailto:golounge@pcf.city.hiroshima.jp)

October 2018

**Collection Exhibition**

Admission Fee (all exhibitions):  
A-¥510, U-¥310, H & under-Free  
Holders of special exhibition admission tickets  
are also entitled to view the Museum's Collection  
exhibits.

i **A Selection Celebrating the 50<sup>th</sup>  
Anniversary of the Hiroshima Prefectural  
Museum**

Period: Until Monday, December 24

**Kure Municipal Museum of Art**

Address: Irifuneyama Koen, Saiwai-cho, Kure City  
Tel: 0823-25-2007  
Hours: 10:00 am – 5:00 pm  
Closed: Tuesdays (except national holidays)  
URL: <http://kure-bi.jp/>

**Special Exhibition**i **Marc Chagall**

Period: Until Sunday, November 11  
Admission Fee: A-¥1,000, U&H-¥600,  
J&E-¥400

**Fukuyama Museum of Art**

Address: 2-4-3 Nishi-machi, Fukuyama City  
Tel: 084-932-2345  
Hours: 9:30 am – 5:00 pm  
⌘ Open until 7 pm on October 5, 6, 26 & 27  
Closed: Mondays (except national holidays),  
September 18, 25 & October 9  
HP: [http://www.city.fukuyama.hiroshima.jp/  
site/fukuyama-museum/](http://www.city.fukuyama.hiroshima.jp/site/fukuyama-museum/)

**Special Exhibition**i **Ryusei Kishida: Search for a Secret,  
Mysteries of Existence**

Period: Until Sunday, November 4  
Admission Fee: A&U-¥1,000  
H & under-Free

N A ticket to see both the special exhibition and  
the art collection is available for ¥1,100.

**Collection Exhibition**

Admission Fee: A&U-¥300, H & under-Free  
Period: Until Sunday, December 9

**Onomichi City Museum of Art**

Address: 17-19 Nishitsuchido-cho, Onomichi City  
(Inside Senkoji Park)  
Tel: 0848-23-2281  
Hours: 9:00 am – 5:00 pm  
Closed: Mondays except national holidays  
URL: <http://www7.city.onomichi.hiroshima.jp/>

**Special Exhibition**i **Wasaku Kobayashi**

Period: Until Sunday, November 18  
Admission Fee: A-¥800, U&H-¥550,  
J&E-Free

**Okuda Genso Sayume Art Museum**

Address: 453-6 Higashi Sakeya-machi, Miyoshi City  
Tel: 0824-65-0010  
Hours: 9:30 am – 5:00 pm  
Closed: October 10  
URL: <http://www.genso-sayume.jp>

**Special Exhibition**i **Mitsumasa Anno**

Period: Until Monday, October 8  
Admission Fee:  
A-¥1,000 (¥900), Tickets for couple-  
¥1,800 U&H-¥500 (¥400), J & under-Free  
⌘ Advance ticket prices shown in ( ).

i **Noritake Kinashi – moment –**

Period: Saturday, October 20 – Sunday,  
December 9  
Admission Fee:  
A-¥1,200 (¥1,000), Tickets for couple-  
¥2,000 U&H-¥600 (¥500), J & under-Free  
⌘ Advance ticket prices shown in ( ).

**Fudenosato Kobo**

Address: 5-17-1 Nakamizo, Kumano-cho, Aki-gun  
Tel: 082-855-3010  
Hours: 10:00 am – 5:00 pm  
Closed: Mondays (except national holidays)  
URL: <http://fude.or.jp/jp/>

**Special Exhibition**i **Art of Rinpa**

Period: Until Sunday, November 4  
Admission Fee: A&U-¥1,000, H,J&E-¥250

**Hatsukaichi Art Gallery**

Address: 1-11-1 Shimohera, Hatsukaichi City  
(inside Hatsukaichi Bunka Hall Sakurapia)  
Tel: 0829-20-0222  
Hours: 10:00 am – 6:00 pm  
Closed: Mondays (except national holidays),  
October 9

**Special Exhibition**i **aspect – Modern Video Exhibition by  
Faculty of Arts, Hiroshima City University**

Period: Until Sunday, October 14  
Admission Fee: Free admission



Please feel free to contact the International Exchange Lounge at 082-247-9715.

E-mail: [golounge@pcf.city.hiroshima.jp](mailto:golounge@pcf.city.hiroshima.jp)

October 2018

# Hiroshima Toyo Carp Schedule 2018

The Toyo Carp (Hiroshima's professional baseball team) plays about 60 games at the MAZDA Zoom-Zoom Stadium Hiroshima every year.

## GAME SCHEDULE Date / Starting Time / Game

### OCTOBER

Tuesday, 2<sup>nd</sup>, 6:00 pm / vs. Hanshin Tigers

Wednesday, 3<sup>rd</sup>, 6:00 pm / vs. Hanshin Tigers

Thursday, 4<sup>th</sup>, 6:00 pm / vs. Yomiuri Giants

## TICKET OFFICES

### w MAZDA Zoom-Zoom Stadium Hiroshima

Tickets can be purchased at the ticket booths at the entrances of the stadium (closed on August 6).

#### Booth Opening Times

11:30 am (days with night games) / 11:00 am (days with day games)

11:00 am – 4:00 pm (days when there are no games)

### w CARPIO (6-7 Hacho-bori, Naka-ku)

OPEN: 10:00 am – 4:00 pm

CLOSED: No fixed times

TEL: 227-2222

### w Convenience Stores

Tickets are available at convenience stores such as Lawson, Seven-Eleven, FamilyMart and Sunkus.

## ACCESS

### MAZDA Zoom-Zoom Stadium Hiroshima:

From JR Hiroshima Station, walking time to the stadium is 10 minutes.

## INQUIRIES

### Hiroshima Toyo CARP

Tel. (082) 223-2141 Fax. (082) 502-1189 URL: [www.carp.co.jp/](http://www.carp.co.jp/)



Please feel free to contact the International Exchange Lounge at 082-247-9715.

E-mail: [golounge@pcf.city.hiroshima.jp](mailto:golounge@pcf.city.hiroshima.jp)

October 2018

# Sanfrecce Hiroshima FC Schedule 2018

## **GAME SCHEDULE:** Date / Kick Off / Game / Venue / Ticket Sales

### **2018 J League**

- Saturday, October 6 / 2:00 pm / vs. Kashiwa Reysol / EDION Stadium Hiroshima / Now on sale
- Saturday, November 10 / 2:00 pm / vs. Vegalta Sendai / EDION Stadium Hiroshima /  
From Saturday, October 6
- Saturday, November 24 / 2:00 pm / vs. Nagoya Grampus / EDION Stadium Hiroshima / From Saturday,  
October 6

## **TICKETS** Seats / Advance Tickets / At the Door

- w Reserved Seats SS / ¥5,300 / ¥5,900
- w Reserved Seats SA / ¥3,700 / ¥4,300
- w Unreserved Seats for Adults / ¥2,600 / ¥3,200
- w Unreserved Seats for Students (High School Students and under) / ¥1,000 / ¥1,500

## **ACCESS**

### w EDION Stadium Hiroshima (Hiroshima Big Arch)

Take the *Astramline* bound for *Koiki-koen-mae* (広域公園前) and get off at the last station, *Koiki-koen -mae* (広域公園前).

From *Hondori* Station: One way fare - ¥480 Travel time - 35 min.

## **TICKET OFFICES**

- w Sanfrecce Hiroshima Official Shop V-POINT (Shareo, underground shopping mall) / Tel. 248-3317  
/ Mon. – Sat.: 11 am – 9 pm; Sun. & national holidays: 10 am – 8 pm / Open every day
- w EDION Play Guide (SUNMALL, 1F)
- w Fukuya (Hiroshima Station) (7F)
- w Alpark Tenmaya (3F)
- w Convenience Stores (FamilyMart, Seven-Eleven, CircleKSunkus and Lawson)

**INQUIRIES:** Sanfrecce HIROSHIMA Tel. 233-3233 URL: [www.sanfrecce.co.jp](http://www.sanfrecce.co.jp)



Please feel free to contact the International Exchange Lounge at 082-247-9715.

E-mail: [golounge@pcf.city.hiroshima.jp](mailto:golounge@pcf.city.hiroshima.jp)

October 2018

# Hiroshima Dragonflies

## 2018 – 2019 B2 League

μ Hiroshima Dragonflies is a professional basketball team in Hiroshima.

### GAME SCHEDULE Date / Starting Time / Game / Venue

<sup>2</sup> Only the games scheduled to be held in Hiroshima are listed below. For away games, please check the Hiroshima Dragonflies' official website.

#### μ OCTOBER

Saturday, October 6 / 2:00 pm / vs. Bambitious Nara / Hiroshima Sun Plaza  
 Sunday, October 7 / 1:30 pm / vs. Bambitious Nara / Hiroshima Sun Plaza  
 Saturday, October 13 / 6:00 pm / vs. Kagawa Five Arrows / Hiroshima Sun Plaza  
 Sunday, October 14 / 1:30 pm / vs. Kagawa Five Arrows / Hiroshima Sun Plaza  
 Wednesday, October 24 / 7:00 pm / vs. Kumamoto Volters / Maeda Housing Higashi-ku Sports Center

#### μ NOVEMBER

Saturday, November 10 / 2:00 pm / vs. Earthfriends Tokyo Z / Higashihiroshima Undo Koen Taiikukan  
 Sunday, November 11 / 1:30 pm / vs. Earthfriends Tokyo Z / Higashihiroshima Undo Koen Taiikukan  
 Saturday, November 17 / 2:00 pm / vs. Sendai 89Ers / Fukuyama Rose Arena  
 Sunday, November 18 / 1:30 pm / vs. Sendai 89Ers / Fukuyama Rose Arena

#### μ DECEMBER

Saturday, December 8 / 6:00 pm / vs. Nishionomiya Storks / Hiroshima Sun Plaza  
 Sunday, December 9 / 1:30 pm / vs. Nishionomiya Storks / Hiroshima Sun Plaza  
 Saturday, December 15 / 2:00 pm / vs. Kanazawa Samuraiz / Fukuyama Rose Arena  
 Sunday, December 16 / 1:30 pm / vs. Kanazawa Samuraiz / Fukuyama Rose Arena  
 Sunday, December 30 / 6:00 pm / vs. Aomori Wat's / Hiroshima Sun Plaza  
 Monday, December 31 / 1:30 pm / vs. Aomori Wat's / Hiroshima Sun Plaza

#### μ JANUARY

Tuesday, January 15 / 7:00 pm / vs. Bambitious Nara / Hiroshima Sun Plaza

#### μ FEBRUARY

Saturday, February 2 / TBC / vs. Ehime Orange Vikings / Kure City Sogo Taiikukan (Oak Arena)  
 Sunday, February 3 / TBC / vs. Ehime Orange Vikings / Kure City Sogo Taiikukan (Oak Arena)  
 Friday, February 8 / TBC / vs. Ibaraki Robots / Hiroshima Sun Plaza  
 Saturday, February 9 / TBC / vs. Ibaraki Robots / Hiroshima Sun Plaza  
 Saturday, February 23 / TBC / vs. Yamagata Wyverns / Hiroshima Sun Plaza  
 Sunday, February 24 / TBC / vs. Yamagata Wyverns / Hiroshima Sun Plaza

#### μ MARCH

Saturday, March 9 / TBC / vs. F Eagles Nagoya / Hiroshima Sun Plaza  
 Sunday, March 10 / TBC / vs. F Eagles Nagoya / Hiroshima Sun Plaza  
 Saturday, March 23 / TBC / vs. Kagawa Five Arrows / Hiroshima Sun Plaza  
 Sunday, March 24 / TBC / vs. Kagawa Five Arrows / Hiroshima Sun Plaza

Please feel free to contact the International Exchange Lounge at 082-247-9715.

E-mail: [golounge@pcf.city.hiroshima.jp](mailto:golounge@pcf.city.hiroshima.jp)

October 2018

Saturday, March 30 / TBC / vs. Shimane Susanoo Magic / Hiroshima Sun Plaza

Sunday, March 31 / TBC / vs. Shimane Susanoo Magic / Hiroshima Sun Plaza

## ☞ APRIL

Friday, April 19 / TBC / vs. Kumamoto Volters / Hiroshima Sun Plaza

Saturday, April 20 / TBC / vs. Kumamoto Volters / Hiroshima Sun Plaza

## TICKETS (At the Door)

w Reserved seats: ¥3,700 - ¥13,400

w Unreserved seats (1<sup>st</sup> floor seats): Adults-¥3,200 Children-¥2,100

w Unreserved seats (2<sup>nd</sup> floor seats): Adults-¥2,600 Children-¥1,500

## ACCESS

w **Hiroshima Sun Plaza** (1-1 Shoko Center 3-chome, Nishi-ku, Hiroshima City)

From JR Shin Inokuchi (新井口) Station or Shoko Center Iriguchi (商工センター入口) Streetcar Stop, walking time to the venue is 5 minutes.

w **Higashihiroshima Undo Koen Taiikukan** (67-1 Taguchi, Saijo-cho, Higashihiroshima City)

Take a bus from JR Saijo (西条) or JR Higashihiroshima (東広島) Station (JR Sanyo Line).

w **Fukuyama Rose Arena** (2-2 Midori-machi, Fukuyama City)

From JR Fukuyama (福山) Station (JR Sanyo Line), walking time to the venue is 10 minutes.

w **Kure City Sogo Taiikukan** (7-1 Hiro Ohshingai 1-chome, Kure City)

From JR Hiro (広島) Station (JR Kure Line), walking time to the venue is 5 minutes.

## TICKET OFFICES

w Hiroshima Dragonflies Club Shop (Hiroshima Marina Hop / Tel. 082-297-6825 / 10:00 am – 8:00 pm)  
(The club shop sells advance tickets only.)

w Ticket PIA

w Convenience Stores (FamilyMart, Seven-Eleven, CircleKSunkus and Lawson)

## INQUIRIES

w Hiroshima Dragonflies Tel. 082-297-6825 (weekdays, 10:00 am – 5:30 pm)

HP: <http://hiroshimadragonflies.com>

w B. League Official HP: <https://www.bleague.jp/>



Please feel free to contact the International Exchange Lounge at 082-247-9715.

E-mail: [golounge@pcf.city.hiroshima.jp](mailto:golounge@pcf.city.hiroshima.jp)

October 2018



# Seasonal Event Information

## October 2018

Ⓔ Event schedules are subject to change. Please contact event organizers before you go.

### Events Held in Hiroshima City



#### Wednesdays between April 4 and December 26, 2018

✓ October 3, 10, 17, 24 & 31; November 7, 14, 21 & 28

#### Hiroshima Kagura ひろしまけんみんぶんか 広島県民文化センター「ひろしまがくら 広島神楽」ていきこうえん 定期公演

**TIME:** 7:00 pm – 8:45 pm (The venue will open at 6:00 pm.)

**PLACE:** Hiroshima Kenmin Bunka Center, Ote-machi, Naka-ku (located near Hondori Shopping Street)

**DIRECTION:** From Kamiya-cho-nishi or Hondori streetcar stops, walking time to the venue is 3 minutes.

**TICKETS:** ¥1,000 <sup>2</sup> Non-reserved seats only

<sup>2</sup> Tickets will be sold from 5:00 pm on the day of performance at the center.

There are no advance tickets.

**INQUIRIES:** Hiroshima Kenmin Bunka Center 082-245-2311

#### Mondays

#### Movies on Monday

**TIME:** 5:00 pm – 7:00 pm (English language programming suitable for children)

7:00 pm – 8:00 pm (English language television shows and movies suitable for teens)

8:00 pm – 11:00 pm (English language television shows and movies suitable for adults)

**PLACE:** Peace Café, Kamihatchobori, Naka-ku

**DIRECTION:** From Jogakuin-mae streetcar stop (Hiroden Hakushima Line), walking time to the venue is 5 minutes.

**ADMISSION FEE:** ¥500 (includes your choice of soft drink)

**INQUIRIES:** Peace Café 082-225-7284 Email: johnmensing@gmail.com

© Watch cartoons and more on Monday afternoons.

#### Sundays in October

#### Early-morning Opening of Shukkeien Garden しゅっけいえん 縮景園 そうちょうかいえん 早朝開園

**OPEN HOURS:** 7:00 am – 5:00 pm <sup>2</sup> The garden opens at 9 am on weekdays and Saturdays.

**PLACE:** Shukkeien Garden

**DIRECTION:** From Shukkeien-mae streetcar stop (Hiroden Hakushima Line), walking time to the venue is 5 minutes.

**ADMISSION FEE:** Adults-¥260, University & high school students-¥150

Junior high & elementary school students- ¥100

**INQUIRIES:** Shukkeien Garden 082-221-3620

© Matcha (green tea) will be served to the first 30 people, and an origami lesson will also be held.

#### The 6<sup>th</sup>, 16<sup>th</sup> & 26<sup>th</sup> of Every Month

#### Talk with A-bomb Survivors 「6」のつくひ 語り部 かたべ さんとお話 はな しよう!

Ⓔ You can talk with A-bomb survivors in English on the 6<sup>th</sup>.

There will be interpreters at the café on the 16<sup>th</sup> & 26<sup>th</sup>.

**TIME:** 11:00 am – 5:00 pm Story telling: • 1:00 pm , 3:00 pm

Please feel free to contact the International Exchange Lounge at 082-247-9715.

E-mail: [golounge@pcf.city.hiroshima.jp](mailto:golounge@pcf.city.hiroshima.jp)

October 2018

**PLACE:** Social Book Café Hachidori-sha, Dobashi-cho, Naka-ku

**DIRECTION:** From Dobashi-cho streetcar stop, walking time to the venue is 5 minutes.

**FEE:** Free admission <sup>2</sup> You need to order at least one drink per person.

**INQUIRIES:** Social Book Café Hachidorisha 082-576-4368 E-mail: hachidorisha@gmail.com

© This is not like a lecture, but a casual talk with A-bomb survivors.

ê **Social Book Café Hachidorisha** ê

OPEN HOURS: Wednesday, Thursday & Friday: 3:00 pm – 11:00 pm

Saturday, Sunday, national holidays, the 6<sup>th</sup>, 16<sup>th</sup> & 26<sup>th</sup>: 11:00 am - midnight

CLOSED: Monday & Tuesday

**Saturday, October 6**

**An Event Commemorating the 110<sup>th</sup> Anniversary of Japanese Immigrants to Brazil** にほんいみん しゅうねんきねんじぎょう **ブラジル 日本移民110周年記念事業**

**TIME:** From 11:00 am onward

**PLACE:** Hiroshima City *Ryugakusei Kaikan* (International House), Nishi-kojin-machi, Minami-ku

**DIRECTION:** From JR Hiroshima Station (south exit), walking time to the venue is 10 minutes.

**CONTENTS:**

**Part 1: Lectures** From 11:00 am onward

**Main lecture: "To become a bridge between Japan and Brazil"** by Mr. Renan Eiji Teruya

® Mr. Rena Eiji Teruya, a legal apprentice, is the first Brazilian who passed Japan's bar exam as a third-generation Japanese-Brazilian and son of a migrant worker.

**Part 2: Exchange Event with Brazilian Home Cooking** From 1:30 pm onward

**FEE:** Free admission for lectures

Fee for the exchange event: Adults and university students-¥2,500

Senior and junior high school students-¥1,000

Elementary school students and under-Free

**INQUIRIES:** Hiroshima Japan-Brazil Association 082-544-0020

E-mail: info@mizma.co.jp HP: <http://www.mizma.co.jp/brasil-hiroshima>

ê **Panel Exhibition: Japanese Immigration to Brazil** ê

PERIOD: Wednesday, October 3 – Saturday, October 13

PLACE: Hiroshima City *Ryugakusei Kaikan* (International House), IF, Robby

**October 6 (Sat.), 21 (Sun.) & 29 (Mon.)**

**An Evening of Kagura** よかぐらこうえん **夜神楽公演**

**TIME:** ® *Kagura* Performance: 6:00 pm – 6:45 pm (The venue will open at 5:30 pm.)

® Q&A and Photo Session: From 6:45 pm onward

**VENUE:** Hiroshima Prefectural Art Museum, B1F, Kami-nobori-cho, Naka-ku

**DIRECTION:** From Shukkeien-mae streetcar stop (Hiroden Hakushima Line), walking time to the venue is 3 minutes.

**TICKETS:** Adults-¥1,000 Children (12 years old and under)-¥500

<sup>2</sup> Admission free for children 3 and under (they should be seated on a guardian's lap.)

<sup>2</sup> Tickets will be sold from 5:30 pm on the day of performance at the museum. There are no advance tickets.

**INQUIRIES:** RCC *Bunka* Center 082-222-2216 (weekdays only)

Hiroshima Orizuru Tower Tourist Information Center 090-7131-8055 (10 am – 6 pm)

**Sunday, October 7 & 21**

**Hiroshima Minato Marché** ひろしまみなとマルシェ

**TIME:** 9:00 am – 3:00 pm

**PLACE:** Open space between the East and West Terminals of Hiroshima Port, Minami-ku

**DIRECTION:** Take the No. 1, 3 or 5 streetcar bound for Hiroshima Port and get off at the last stop, Hiroshima Port.



Please feel free to contact the International Exchange Lounge at 082-247-9715.

E-mail: [golounge@pcf.city.hiroshima.jp](mailto:golounge@pcf.city.hiroshima.jp)

October 2018

**INQUIRIES:** Hiroshima Minato Marché Office 082-255-6646

© You can buy and taste locally-grown fresh vegetables and other food products at the market.

### Monday, October 8

## The 39<sup>th</sup> *Nohgaku no Tsudoï* だい 39回 かいし 市民のうがく 能楽のつどい

**TIME:** 10:00 am – 5:30 pm (doors will open at 9:30 am)

**PLACE:** JMS Aster Plaza, Kako-machi, Naka-ku

**DIRECTION:** Take the No. 24 bus and get off at Kako-machi. Walking time to the venue is 2 minutes.

**ADMISSION:** Free

**INQUIRIES:** Hiroshima City *Bunka Zaidan* (Culture Foundation) 082-244-0750

© This event provides an opportunity for citizens to get to know more about *Noh*, a traditional Japanese performing art. You can touch *Noh* masks at this event.

### October 14 (Sun.), 15 (Mon.) & 22 (Mon.)

## Hiroshima Cultural Night ナイトエンターテインメント 公演

**TIME:** ① Performance: 6:00 pm – 7:15 pm (The venue will open at 5:30 pm.)

② Q&A and Photo Session: From 7:15 pm onward

**VENUE:** Hiroshima Prefectural Art Museum, B1F, Kami-nobori-cho, Naka-ku

**DIRECTION:** From Shukkeien-mae streetcar stop (Hiroden Hakushima Line), walking time to the venue is 3 minutes.

**PROGRAMS:** ① Oct. 14: Samurai ninja theatre ② Oct. 15: *Noh* performance

③ Oct. 22: Samurai performance, traditional Japanese dance & court music performances

**TICKETS:** ¥1,000 <sup>2</sup> Tickets will be sold from 5:30 pm on the day of performance at the museum. There are no advance tickets.

**INQUIRIES:** Hiroshima Orizuru Tower Tourist Information Center 090-7131-8055 (10 am – 6 pm)

### Sunday, October 14

## Hiroshima City Sports Recreation Festival

ひろしまし  
広島市スポーツレクリエーションフェスティバル

**TIME:** 9:00 am- 4:00 pm

**VENUE:** Koiki Koen (park), EDION Stadium and others, Asaminami-ku

**DIRECTION:** From *Astramline* Koiki Koen-mae station, walking time to the venue is 10 minutes.

**PARTICIPATION FEE:** Free

<sup>2</sup> Participants will be accepted on the event day (except for events which require advance applications (the application period for these has concluded)).

**INQUIRIES:** Executive Committee 082-243-0579



### Saturday, October 20

## The Day of Sister and Friendship Cities Event: Chongqing Day

しまい ゆうこうとし ひ きねん じゅうけい ひ  
(China) 姉妹・友好都市の日記念イベント 重慶の日

**TIME:** 1:00 pm – 3:30 pm

**PLACE:** Hiroshima City *Ryugakusei Kaikan* (International House), Nishi-kojin-machi, Minami-ku

**DIRECTION:** From JR Hiroshima Station (south exit), walking time to the venue is 10 minutes.

**INQUIRIES:** *Hiroshima Heiwa Bunka Center, Kokusai Kouryu Kyouryoku Ka* (Hiroshima Peace Culture Foundation, International Relations and Cooperation Division) 082-242-8879

© Tai chi and traditional Chinese performances, tasting of oolong tea and Chinese confectionary, etc.



Please feel free to contact the International Exchange Lounge at 082-247-9715.

E-mail: [golounge@pcf.city.hiroshima.jp](mailto:golounge@pcf.city.hiroshima.jp)

October 2018

**Sunday, October 21****Japanese Music Concert at Shukkeien Garden**ほうがくかんしょうかい  
邦楽鑑賞会**TIME:** w Concert at *Seifu-kan*: j 10:30 am k 2:00 pm w Concert at *Meigetsu-tei*: 12:30 pm**PLACE:** Shukkeien Garden, *Seifu-kan* and *Meigetsu-tei***DIRECTION:** From Shukkeien-mae streetcar stop (Hiroden Hakushima Line), walking time to the venue is 5 minutes.**FEE:** ¥2,000 for the concert at *Seifu-kan* <sup>2</sup> No charge for the concert at *Meigetsu-tei*.<sup>2</sup> Admission to the garden is also required.

( Adults - ¥260, University & High school students - ¥150 )	
( Junior high & Elementary school students - ¥100 )	

**INQUIRES:** Shukkeien Garden 082-221-3620**Saturday, October 27****2018 Autumn Sumo Tour in Hiroshima (*Ozumo Aki Basho*)**おおずもうあきばしよ  
大相撲安芸場所**TIME:** 8:00 am – 3:00 pm**VENUE:** Hiroshima Green Arena, Naka-ku**DIRECTION:** From Kamiya-cho-nishi streetcar stop, walking time to the venue is 3 minutes.**TICKETS:**1<sup>st</sup> Floor

i "Tamari" Seats (ringside)

S - ¥14,000/person	A - ¥13,000/person	B - ¥12,000/person
C - ¥11,000/person	D - ¥10,000/person	E - ¥9,000/person
4 people (6 E seats) - ¥48,000		

j Chair Seats

F - ¥10,000/person	G - ¥8,000/person	H - ¥12,500/person	I - ¥12,000/person
Wheelchair Seating: ¥19,000 (two seats)			

2<sup>nd</sup> Floor

j Chair Seats

J - ¥8,000/person	K - ¥7,000/person	L - ¥5,000/person	M - ¥3,000/person
Wheelchair Seating: ¥13,000 (two seats)			

**<Notice>** <sup>2</sup> Seats with " ": You can take a special sumo cushion home as a souvenir.<sup>2</sup> Wheelchair seating is for wheelchair users and their attendants.**HOW TO ORDER TICKETS:**Ticket orders will be accepted online. Please see the website (<http://www.sumoaki-hiroshima.com/en>) for more information.<sup>2</sup> You can order a *bento* (lunch box; ¥2,000) with tea as well.<sup>2</sup> You may not bring any food or drink into the venue other than this *bento*.**INQUIRIES:** *Ozumo Aki Basho* Office 082-292-5559 (weekdays, 10 am – 5 pm)E-mail: [sumoaki@ppad.co.jp](mailto:sumoaki@ppad.co.jp) HP: <http://www.sumoaki-hiroshima.com/>✓ **Official ticket distributor for non-Japanese speakers** ✓JP Educational 082-224-3816 E-mail: [info@jpeducational.com](mailto:info@jpeducational.com)**Saturday, October 27 – Sunday, November 11****Kikka-ten (Chrysanthemum Exhibition) at Hiroshima Castle**ひろしまじょうだいきっかてん  
広島城大菊花展**TIME:** 10:00 am – 4:30 pm w Oct. 27 ○ 10:30 am – 4:30 pm w Nov. 11 ○ 10:00 am – 4:00 pm**PLACE:** Hiroshima Castle, *Ni-no-maru* & *San-no-maru*, Naka-ku**DIRECTIONS:**

- From JR Shin-hakushima station (JR Sanyo Line), walking time to the venue is 10 minutes.
- Take a Hiroshima sightseeing loop bus (orange route or lemon route) and get off at Hiroshima Castle (Gokoku-jinja-mae). Walking time to the venue is 6 minutes.
- From Kamiya-cho-higashi or Kamiya-cho-nishi streetcar stop, walking time to the venue is 15 minutes.

Please feel free to contact the International Exchange Lounge at 082-247-9715.

E-mail: [golounge@pcf.city.hiroshima.jp](mailto:golounge@pcf.city.hiroshima.jp)

October 2018



**ADMISSION FEE:** Free

**INQUIRIES:** *Hiroshima Matsuri linkai* 082-554-1813 E-mail: kankou-2@hiroshima-navi.or.jp

© 2,000 potted chrysanthemums will be displayed. *Koto* (traditional Japanese harp) and *gagaku* (ancient court music) concerts will also be held during this period.

**Saturday, October 27 & Sunday, October 28**



## **Hiroshima Food Festival 2018** ひろしまフードフェスティバル 2018

**TIME:** 10:00 am – 5:00 pm <sup>2</sup> On the 27<sup>th</sup>, the festival at Hiroshima Castle will continue until 8:00 pm.

**PLACE:** Around Hiroshima Castle and the *Chuo Koen* (Park), Naka-ku

**DIRECTIONS:**

- From JR Shin-hakushima station (JR Sanyo Line), walking time to the venue is 10 minutes.
- 、 Take a Hiroshima sightseeing loop bus (orange route or lemon route) and get off at Hiroshima Castle (Gokoku-jinja-mae). Walking time to the venue is 6 minutes.
- 、 From Kamiya-cho-higashi or Kamiya-cho-nishi streetcar stop, walking time to the venue is 15 minutes.

**ADMISSION FEE:** Free <sup>2</sup> Food and drink will incur extra charges.

**INQUIRIES:** Executive Committee Office (inside RCC TV; weekdays, 9:30 am – 5:30 pm)  
082-222-1133

© This is the biggest food festival in Hiroshima. You can enjoy not only food but also *kagura* performances at the venue.

**Sunday, October 28**

## **International Festival PE-A-CE-LO-VE 2018**

こくさいこうりゅう  
**国際交流フェスティバル べあせろべ 2018**

**TIME:** 10:00 am – 4:00 pm

**PLACE:** *Chuo Koen* (park), Motomachi, Naka-ku

**DIRECTIONS:** • From Kamiya-cho-higashi or Kamiya-cho-nishi streetcar stop, walking time to the venue is 15 minutes.

、 From JR Shin-hakushima station (JR Sanyo Line), walking time to the venue is 17 minutes.

**INQUIRIES:** Executive Committee 082-244-6836 (Monday, Wednesday & Friday)

© A festival that allows Hiroshima's citizens of various nationalities and cultures to interact and develop friendships. You can enjoy a variety of stage performances and games from all over the world.

**Sunday, October 28**

## **NIKON Fan Meeting 2018 Hiroshima**

**TIME:** 10:00 am – 6:00 pm <sup>2</sup> Official merchandise will be on sale until 5 pm.

**PLACE:** *Hiroshima Kenritsu Hiroshima Sangyo Kaikan* (Hiroshima Prefectural Industrial Exhibition Hall), West Exhibition Hall, Minami-ku

**DIRECTION:** Get off at Minami Kuyakusho-mae streetcar stop.

**ADMISSION:** Free

**INQUIRIES:** NIKON Customer Support Center 0570-02-8000



**Thursday, November 1 – Sunday, November 11**

## **Kikka-ten (Chrysanthemum Exhibition) at Shukkeien Garden**

きっかてん  
**菊花展**

**TIME:** 9:00 am – 5:00 pm (entry allowed up to 4:30 pm)

**PLACE:** Shukkeien Garden

**DIRECTION:** From Shukkeien-mae streetcar stop (Hiroden Hakushima Line), walking time to the venue is 5 minutes.

**ADMISSION FEE:** Adults-¥260, University & high school students-¥150  
Junior high & elementary school students-¥100

**INQUIRIES:** Shukkeien Garden 082-221-3620

Please feel free to contact the International Exchange Lounge at 082-247-9715.

E-mail: [golounge@pcf.city.hiroshima.jp](mailto:golounge@pcf.city.hiroshima.jp)

October 2018

**Friday, November 2 – Monday, November 12 (except November 7)** ☺ Entry allowed up to 8:30 pm

## Hiroshima Ramen Stadium 2018 ひろしまラーメンスタジアム 2018

**TIME:** ① Mon. – Fri.: 11:00 am – 9:00 pm ② Sat., Sun. & Nov. 3: 10:00 am – 9:00 pm

**PLACE:** Site of the Former Municipal Baseball Stadium, Motomachi, Naka-ku

**DIRECTION:** Get off at Kamiya-cho-nishi or Genbaku Dome-mae streetcar stop.

**ADMISSION FEE:** Free

**RAMEN TICKET:** ¥780 / serving

**INQUIREIS:** TSS Event Office 082-253-1010 (weekdays, 10 am – 6 pm)

© Well-known ramen shops from around Japan will come to Hiroshima.



**Saturday, November 3**

## Kiku-mi (Chrysanthemum-viewing) Tea Ceremony きくみ ちゃかい 菊見茶会

**TIME:** TBC ② Shukkeien Garden Open Hours: 9:00 am – 5:00 pm (October – March)

**PLACE:** Shukkeien Garden

**DIRECTION:** From Shukkeien-mae streetcar stop (Hiroden Hakushima Line), walking time to the venue is 5 minutes.

**ADMISSION FEE:** Adults-¥260, University & high school students-¥150, Junior high & elementary school students-¥100 ② Fee for the tea ceremony will also be required.

**INQUIRIES:** Shukkeien Garden 082-221-3620

**Saturday, November 3**

## The 38<sup>th</sup> Hiroshima International Peace Marathon

だい かい こくさいへいわ  
第38回 ひろしま 国際 平和 マラソン

**MAIN VENUE:** Coca-Cola Bottlers Japan Inc. Hiroshima Stadium

**DIRECTION:** Take the No. 3 or No. 8 bus bound for Kanon Marina Hop or Hiroshima Heliport and get off at Sogo Ground Iriguchi.

**COURSES:** ① Kids course (1km) ② Beginners course (5km)  
③ Challenge course (10km) ④ Wheelchair course (5km)

**ELIGIBILITY:** Elementary school students and above

**PARTICIPATION FEE:** ¥600 – ¥3,500

**HOW TO PARTICIPATE:** Enrollment will be accepted online from Friday, August 17.  
② Enrollment will be closed when all 12,000 spots are full.

**INQUIRIES:** Executive Committee 082-234-4679 (weekdays, 9:30 am – 5:30 pm)  
HP: <http://www.hiroshima-marathon.com/>

**Saturday, November 3**

## “Think Peace for Yourself” - Philosophical Dialogue Session -

へいわ かんが てつがく  
ひとりひとりの「平和」を考える 哲学カフェ

**TIME:** 3:00 pm – 6:00 pm (venue will open at 2:40 pm.)

**PLACE:** Kissa (café) Saeki, Kamiya-cho, Naka-ku

**DIRECTION:** From Kamiya-cho Higashi or Hondori streetcar stop, walking time to the venue is 5 minutes.

**PARTICIPATION FEE:** Adults-¥2,000 Students-¥1,500 (including one drink)

**CAPACITY:** 45 people (need to apply) ② applications close after reaching capacity

**LANGUAGE:** Japanese (2 groups), English (1 group)

**RESERVATIONS:** Access the sites below to make a reservation.

<https://goo.gl/forms/ayohVRoBSPFElqm93> or <https://www.facebook.com/philocafehiroshima>

**INQUIRIES:** Hiroshima Philosophy Café Facebook: <https://www.facebook.com/philocafehiroshima>



Please feel free to contact the International Exchange Lounge at 082-247-9715.

E-mail: [golounge@pcf.city.hiroshima.jp](mailto:golounge@pcf.city.hiroshima.jp)

October 2018

**Sunday, November 18****The 19<sup>th</sup> International Festival 2018** だい かいこくさい 第19回 国際フェスタ 2018**TIME:** 10:00 am – 4:00 pm**PLACE:** Hiroshima Kokusai Kaigijo (International Conference Center Hiroshima), Peace Memorial Park & Peace Boulevard**DIRECTION:** Get on a bus bound for Yoshijima and get off at Heiwa-kinen-koen (Peace Memorial Park).**INQUIRIES:** Hiroshima Heiwa Bunka Center, Kokusai Kouryu Kyouryoku Ka (Hiroshima Peace Culture Foundation, International Relations and Cooperation Division)Tel. 082-242-8879 E-mail: [internat@pcf.city.hiroshima.jp](mailto:internat@pcf.city.hiroshima.jp)Facebook: <http://www.facebook.com/international.festival.hiroshima>HP: <http://www.pcf.city.hiroshima.jp/ircd>

© Lectures, culture and information exchange meetings, workshops, international food stalls, and more!

<sup>2</sup> Some activities at the festival require reservations. Reservations will be accepted from Monday, October 15.**Friday, November 23 – Sunday, November 25****Hiroshima International Film Festival 2018** ひろしまこくさいえいがさい 広島国際映画祭 2018**VENUES:** ☒ NTT Cred Hall (Motomachi Cred-Pacela, 11F), Motomachi, Naka-ku

- Hiroshima City Eizo Bunka Library (Hiroshima City Cinematographic and Audio-Visual Library), Motomachi, Naka-ku

☒ Yokogawa Cinema, Yokogawa-cho, Nishi-ku

**DIRECTIONS:**

☒ NTT Cred Hall: Get off at Kamiya-cho-higashi or Kamiya-cho-nishi streetcar stop, or Astramline Kencho-mae Station.

- Eizo Bunka Library: Get off at Kamiya-cho-nishi Streetcar Stop or Astramline Kencho-mae Station. Walking time to the venue is 5 minutes.

☒ Yokogawa Cinema: Get off at JR Yokogawa Station (JR Sanyo Line) or Yokogawa streetcar stop. Walking time to the venue is 5 minutes.

**TICKETS:** One-day Ticket: Advance-¥1,500 At the door-¥2,000**INQUIRIES:** Hiroshima International Film Festival Office 082-228-5226E-mail: [info@hiff.jp](mailto:info@hiff.jp) HP: <http://hiff.jp>**Events Held on Miyajima****Until Friday, November 30****Zero Higashida Sculpture Exhibition** ゼロ・ヒガシダ 展**TIME:** 8:00 am – 5:00 pm**PLACE:** Inside Daishoin Temple Grounds, Miyajima**DIRECTION:** Get off at JR Miyajima-guchi station (JR Sanyo Line) or the Miyajima streetcar stop (Hiroden Streetcar Miyajima Line), then take a ferry to Miyajima.**INQUIRIES:** Daishoin Temple 0829-44-0111**Monday, October 8****Miyajima Grand Tea Ceremony** みやじまだいちゃかい 宮島大茶会**TIME:** 10:00 am – 3:00 pm**PLACE:** Various Places in Miyajima**DIRECTION:** Get off at JR Miyajima-guchi station (JR Sanyo Line) or the Miyajima streetcar stop (Hiroden Streetcar Miyajima Line), then take a ferry to Miyajima.**INQUIRIES:** Executive Committee (inside Daishoin Temple) 0829-44-0111

Please feel free to contact the International Exchange Lounge at 082-247-9715.

E-mail: [golounge@pcf.city.hiroshima.jp](mailto:golounge@pcf.city.hiroshima.jp)

October 2018

© Miyajima Grand Tea Ceremony is a large-scale tea ceremony festival which is open to participation from the general public.

### Monday, October 15

#### Kikka-sai (Chrysanthemum-Offering) Festival きっかさい 菊花祭

**TIME:** From 5:00 pm onward

**PLACE:** Itsukushima Shrine, Miyajima

**DIRECTION:** Get off at JR Miyajima-guchi station (JR Sanyo Line) or the Miyajima streetcar stop (Hiroden Streetcar Miyajima Line), then take a ferry to Miyajima.

**FEE:** Admission fee for Itsukushima Shrine

{ Adults & University students-¥300, High school students- ¥200  
Junior high & Elementary school students-¥100 }

**INQUIRIES:** Itsukushima Shrine 0829-44-2020

© *Bugaku*, musical court dancing will be performed after a ritual. Chrysanthemums will be dedicated to the gods during this *Bugaku* Performance.

### Sunday, October 21

#### Miyajima Osuna-yaki Festival みやじま すなやき 宮島お砂焼まつり

**TIME:** 10:00 am – 3:00 pm

**PLACE:** Around Miyajima-guchi Shopping Street from the JR Miyajima-guchi Station to the Miyajima-guchi Pier, Hatsukaichi City

**DIRECTION** Get off at JR Miyajima-guchi station (JR Sanyo Line) or Miyajima-guchi streetcar stop (Hiroden Miyajima Line). Walking time to the venue is 3 – 5 minutes.

**INQUIRIES:** Executive Committee (*Ono-cho Shoko Kai*) 0829-55-3111

© Miyajima *Osuna-yaki* is a type of ceramic produced in Hatsukaichi City. There will be a ceramics market will be held.

### Monday, October 22

#### Noh Performance at Itsukushima Shrine いつくしまかんげつのう 巖島観月能

**TIME:** 6:30 pm – 8:00 pm (the venue will open at 6:00 pm.)

**VENUE:** Itsukushima Shrine, *Noh* Stage, Miyajima

**DIRECTION:** Get off at JR Miyajima-guchi station (JR Sanyo Line) or Miyajima streetcar stop (Hiroden Streetcar Miyajima Line), then take a ferry to Miyajima.

**TICKETS:** S-¥15,000 A-¥12,000 B-¥10,000 C-¥7,000

<sup>2</sup> Tickets are sold at Ticket PIA, Miyajima Tourist Association and Chugoku Shimbun.

**INQUIRIES:** Executive Committee 082-294-4114

### Tuesday, October 23

#### San-oh Shrine Festival さんのうじんじゃさい 三翁神社祭

**TIME:** From 10:00 am onward

**PLACE:** San-oh Shrine, Miyajima

**DIRECTION:** Get off at JR Miyajima-guchi station (JR Sanyo Line) or Miyajima streetcar stop (Hiroden Streetcar Miyajima Line), then take a ferry to Miyajima.

**INQUIRIES:** Itsukushima Shrine 0829-44-2020

© *Bugaku*, musical court dancing will be performed.



### Saturday, November 3

#### Fudo-myō-oh Festival いつくしまだいぶつどうみょうおうさいとうごまきがんぼうよう 巖島大仏不動明王柴灯護摩祈願法要

**TIME:** From 1:00 pm onward

**PLACE:** Daiganji Temple, Miyajima

Please feel free to contact the International Exchange Lounge at 082-247-9715.

E-mail: [golounge@pcf.city.hiroshima.jp](mailto:golounge@pcf.city.hiroshima.jp)

October 2018



**DIRECTION:** Get off at JR Miyajima-guchi station (JR Sanyo Line) or Miyajima streetcar stop (Hiroden Streetcar Miyajima Line), then take a ferry to Miyajima.

**INQUIRIES:** Daiganji Temple 0829-44-0179

© After a ritual, you can observe a fire-walking ceremony and try it out for yourself.

**Sunday, November 11**

## Tea-offering Ceremony By Ueda School うえだりゅうけんちやさい 上田流献茶祭

**TIME:** TBC

**PLACE:** Itsukushima Shrine, *Noh* Stage, Miyajima

**DIRECTION:** Get off at JR Miyajima-guchi station (JR Sanyo Line) or Miyajima streetcar stop (Hiroden Streetcar Miyajima Line), then take a ferry to Miyajima.

**INQUIRIES:** Itsukushima Shrine 0829-44-2020

## Events Held Outside of Hiroshima City

<Notice> Train Status Information (As of September 10)

- Suspended sections:
- JR Kure Line between Hiro Station and Mihara Station
  - JR Fukuen Line between Fuchu Station and Shiomachi Station
  - JR Geibi Line between Karuga Station and Bingo-ochiai Station

**Saturday, September 30 – Sunday, October 21**

## TOMONOURA de ART 2018

**PLACE:** Throughout the Tomonoura Area, Fukuyama City

**DIRECTION:** Take a bus from JR Fukuyama Station (JR Sanyo Line) and get off at Tomonoura.

**INQUIRIES:** *Fukuyama Shoko Kaigisho* 084-921-2349

HP: <http://tomoart.bingo-web.net/index.html>

**Saturday, October 6 & Sunday, October 7**

## 2018 Sake Matsuri 2018 さけ酒まつり

**TIME:** w October 6: 10:00 am – 8:00 pm w October 7: 10:00 am – 5:00 pm

**PLACE:** Around JR Saijo Station, Higashi Hiroshima City

**DIRECTION:** Get off at JR Saijo Station (JR Sanyo Line).

**INQUIRIES:** Executive Committee 082-420-0330 HP: <http://sakematsuri.com/>

**J Sake Hiroba** √ You can taste about 1,000 kinds of sake from around Japan.

**ADMISSION TICKETS:** Advance-¥1,600 / At the door-¥2,100

© Remember, drink-driving is strictly prohibited!



**Sunday, October 7**

## Yabusame at Hori Hachiman Shrine ほりはちまんじんじやぶさめしんじ 堀八幡神社流鏝馬神事

**TIME:** w Ritual is from noon onward w *Yabusame* Performance is from 1:00 pm onward

**PLACE:** Hori Hachiman Shrine & Tonoga *Yabusame* Horse Riding Ground, Akiota-cho

**DIRECTIONS:** j Take a bus from JR Kabe Station (JR Kabe Line) and get off at Togouchi I.C. Bus Center. Driving time to the venue is 5 minutes.

k From Togouchi I.C. on the Chugoku Expressway, driving time to the venue is 5 minutes.

**INQUIRIES:** Hori Hachiman Shrine 0826-22-0651 / *Chiiki Shosha Akiota* 0826-28-1800

© *Yabusame* is the traditional art of shooting arrows from horseback archery. It is a rare opportunity to see *yabusame* in Hiroshima Prefecture.

Please feel free to contact the International Exchange Lounge at 082-247-9715.

E-mail: [golounge@pcf.city.hiroshima.jp](mailto:golounge@pcf.city.hiroshima.jp)

October 2018

**Sunday, October 7****Nagao Shrine Yudate Kagura Performance**ながおじんじゃ ゆだてかぐら  
長尾神社湯立神楽**TIME:** From 1:30 pm onward**PLACE:** Nagao Shrine, Akiota-cho**DIRECTIONS:** • Take a bus bound for Sandankyo from Hiroshima Bus Center (Sogo Hiroshima Department Store, 3F) and get off at Kake-chuo.

, From Togouchi I.C. on the Chugoku Expressway, driving time to the venue is 10 minutes.

**INQUIRIES:** Nagao Shrine 0826-22-0311 / Chiiki Shosha Akiota 0826-28-1800**Sunday, October 7****Shishimai (Lion Dance) in Fukuda**ふくだ ししまい  
福田の獅子舞**TIME:** From 2:30 pm onward**PLACE:** Inari Shrine, Fukuda-cho, Takehara City**DIRECTION:** From JR Daijo station (JR Kure Line), walking time to the venue is 15 minutes.**INQUIRIES:** Takehara City Kanko Kyokai (Tourist Association) 0846-22-4331© The *Fukuda-no-shishimai*, or "Lion Dance", is designated as an intangible cultural asset of Hiroshima Prefecture.**Saturday, October 13****Onomichi Akari (Lantern) Festival**おのみちあか  
尾道灯りまつり**TIME:** 6:00 pm – 9:00 pm**PLACE:** Around JR Onomichi Station (JR Sanyo Line) & the route to old temples, etc., Onomichi City**DIRECTION:** Get off at JR Onomichi Station (JR Sanyo Line).**INQUIRIES:** Onomichi Akari Festival Executive Committee (inside Onomichi City Hall) 0848-38-9184

© About 34,000 paper lanterns will illuminate Onomichi City.

© This will be postponed until October 14 if it rains on the 13<sup>th</sup>.**Sunday, October 14****Airport Festival Hiroshima 2018 エアポートフェスタひろしま 2018****TIME:** 10:00 am – 4:00 pm**PLACE:** Hiroshima Airport and around the airport, Mihara City**DIRECTION:** From JR Hiroshima Station or Hiroshima Bus Center, take a bus to the airport**INQUIRIES:** Executive Committee 082-211-1746**Sunday, October 14****The 3<sup>rd</sup> YOSAKOI Dance Performance in Fukuyama**だい かい  
第3回 ふくのやまよさこい**TIME:** 10:00 am – 5:00 pm**PLACE:** Midori-machi Koen (park), Fukuyama City**DIRECTION:** Take a bus from JR Fukuyama Station (JR Sanyo Line) and get off at Bara Koen-mae. Walking time to the venue is 4 minutes.**INQUIRIES:** Fukuyama no Yosakoi Office 084-944-5517**Saturday, October 20****Hatsuka-no-ichi Market**はつか いち  
廿日の市**TIME:** 8:00 am – 11:30 am**PLACE:** The open space in front of Hatsukaichi City Hall, Hatsukaichi City

Please feel free to contact the International Exchange Lounge at 082-247-9715.

E-mail: [golounge@pcf.city.hiroshima.jp](mailto:golounge@pcf.city.hiroshima.jp)

October 2018

**DIRECTION:** From Hatsukaichi Shiyakusho-mae (Hiroden Streetcar Miyajima Line), walking time to the venue is 5 minutes.

**INQUIRIES:** *Hatsukaichi Kanko Kyokai* (Tourist Association) 0829-31-5656

**Saturday, October 20**

**Miyoshi Fireworks Festival** しみんふっこうきねんはなび  
みよし市民復興祈念花火まつり

**TIME:** 7:00 pm – 8:30 pm

**PLACE:** Downstream of Tomoe-bashi Bridge, Miyoshi City

**DIRECTION:** From Hiroshima Bus Center (Sogo Hiroshima Department Store, 3F), take an express bus bound for Miyoshi / Shobara and get off at JR Miyoshi Station. Walking time to the venue is 15 minutes.

**INQUIRIES:** *Miyoshi City Kanko Kyokai* (Tourist Association) 0824-63-9268

© This will be postponed until October 21 if it rains on the 20<sup>th</sup>.

**Saturday, October 20 – Monday, November 12**

**The 63<sup>rd</sup> Kikka-ten (Chrysanthemum Exhibition) in Fukuyama**

だい かいふくやまきっかてんらんかい  
第63回福山菊花展覧会

**PLACE:** *Fukuyama-jo Koen* (park), Fukuyama City

**DIRECTION:** From JR Fukuyama Station (JR Sanyo Line), walking time to the venue is 5 minutes.

**ADMISSION FEE:** Free

**INQUIRIES:** *Kanko Ka*, Fukuyama City Hall 084-928-1043

© 1,500 potted chrysanthemums will be displayed. A *koto* (traditional Japanese harp) concert and tea ceremony will be held on November 3. A *bonsai* exhibition will also be held from November 1 to 5.

**Sunday, October 21**

**Culture and History Festival in Shimo-kamagari,**

**Chosen Tsushin-shi Parade** しもかまがり ぶんか れきし さいてん ちょうせんつうしんしさいげんぎょうれつ  
下蒲刈 文化と歴史の祭典 朝鮮通信使再現行列

**TIME:** Parade: 10:45 am – 1:00 pm

**PLACE:** The parade will go from *Shimo-kamagari Shimin Center* to *Shimo-kamagari Chugakko* (junior high school), Shimo-kamagari-cho, Kure City

**DIRECTION:** Take a bus bound for Okitomo Tenmangu from JR Hiro Station (JR Kure Line) and get off at San-no-se.

**INQUIRIES:** *Ranto Bunka Shinko Zaidan* 0823-65-2029

© Shimo-kamagari-cho was once a flourishing port-town used as *sankin koutai* (*daimyo*'s, or feudal lord's, alternate-year residence in the Edo period) and a stop for the *chosen tsushin-shi* (delegations from Korea to the Tokugawa Shogunate) on their route to Edo (now Tokyo) during the Edo period (A.D.1603-1868). The *Chosen Tsushin-shi* parade will be re-enacted at this event.

**Saturday, October 27 & Sunday, October 28**

**Takehara Shokei-no-michi (Candle Festival)** まちな たけあか しょうけい みち  
町並み竹灯り たけはら憧憬の路

**TIME:** 5:00 pm – 9:00 pm

**PLACE:** Around the Takehara Historical Buildings Area, Takehara City

**DIRECTION:** From JR Takehara Station (JR Kure Line), walking time to the venue is 15 minutes.

**INQUIRIES:** Executive Committee (inside Takehara City Hall) 0846-22-7745

© Takehara's historical buildings area will be illuminated with candles.

Please feel free to contact the International Exchange Lounge at 082-247-9715.

E-mail: [golounge@pcf.city.hiroshima.jp](mailto:golounge@pcf.city.hiroshima.jp)

October 2018

**Thursday, November 1 – Saturday, November 3****Onomichi *Betcha* Festival** おのみち まつり  
尾道ベッチャー祭**TIME:** w Nov. 1: 6:00 pm – 9:30 pm w Nov. 2: From 11:00 am onward  
w Nov. 3: From 7:50 am onward <sup>2</sup> The festival on the 3<sup>rd</sup> is the highlight of these three days.**PLACE:** Kibitsu Shrine (Ikkyu Shrine) and throughout Onomichi City**DIRECTION (Kibitsu Shrine (Ikkyu Shrine)):**

From JR Onomichi Station (JR Sanyo Line), walking time to the venue is 10 minutes.

**INQUIRIES:** *Hozon Kai* 0848-22-2320 (Kajikawa)© A *mikoshi*, or portable shrine, guided by *Shishi* (a special type of lion) and three lion-masked people called *Beta*, *Soba* and *Shoki* will be carried around the city to drive away evil spirits.**Saturday, November 3****Buddhist Memorial Service for Used Tea Whisks** ちゃせんくようほうようなら  
茶筴供養法要並びに供ちゃしき  
茶式**TIME:** 11:00 am – noon**PLACE:** Kousanji Temple & Kousanji Temple Museum, Onomichi City**DIRECTION:** Take a *Shimanami Liner* express bus from Hiroshima Bus Center (Sogo Hiroshima Department Store, 3F) and get off at Setoda bus stop (a 1 hour and 40 min. bus ride). Then take another bus from there and get off at Kousanji-mae.<sup>2</sup> Reservations are required to take a *Shimanami Liner*. Call the Hiroko Reservation Center (082-238-3344; 9:00 am – 6:00 pm) for more information.**FEE FOR THE CEREMONY:** Free, but payment of the museum's admission fee is required (see below).**ADMISSION FEE FOR THE TEMPLE & THE MUSEUM:**Adults-¥1,400 University students-¥1,000 High school students-¥800  
Seniors (65 years old and above)-¥1,200 Junior high school students and under-Free**INQUIRIES:** Kousanji Temple & Kousanji Temple Museum 0845-27-0800

© Green tea and traditional Japanese confectionary will be served to visitors.

**Saturday, November 24 & Sunday, November 25****The 11<sup>th</sup> 2-Day Hiroshima Peace Walk in Hatsukaichi**だい かい  
第11回 はつかいち  
ピースウォークひろしまツアー in 廿日市**COURSE:** ® Nov. 24: Miyajima Course

® Nov. 25: A-bomb Dome and south area of Hiroshima City Course

**STARTING PLACE:** *Shingu Chuo Koen* (park), Hatsukaihi City**DIRECTION:** From Hatsukaichi Shiyakusho-mae streetcar stop (Hiroden Miyajima Line), walking time to the venue is 4 minutes.**PARTICIPATION FEE:** <sup>2</sup> Elementary school students and under-Free① Fee for 2 Days ①

® Advance application: Adults-¥2,100 Senior &amp; Junior high school students-¥1,100

® Application on the day: Adults-¥2,300 Senior &amp; Junior high school students-¥1,300

① Fee for 1-Day on Nov. 24 ①

® Advance application: Adults-¥1,300 Senior &amp; Junior high school students-¥800

® Application on the day: Adults-¥1,500 Senior &amp; Junior high school students-¥1,000

① Fee for 1-Day on Nov. 25 ①

® Advance application: Adults-¥1,000 Senior &amp; Junior high school students-¥500

® Application on the day: Adults-¥1,200 Senior &amp; Junior high school students-¥700

**HOW TO APPLY:** Fill out the application form and make a payment at a Japan Post Bank (ゆうちょ銀行) by Friday, November 9. The receipt you receive at the post bank will serve as a ticket on the day, so please make sure to keep it and bring it on the day.**INQUIRIES:** Executive Committee 082-218-0511 or 090-1185-8332

Please feel free to contact the International Exchange Lounge at 082-247-9715.

E-mail: [golounge@pcf.city.hiroshima.jp](mailto:golounge@pcf.city.hiroshima.jp)

October 2018

E-mail: hwa.hiroshima@gmail.com

- © Elementary school students and under should be accompanied by their guardians. People who need care should also be accompanied by their carers.
- © Please bring lunch and drink with you.

## Events Held in Yamaguchi Prefecture

**Every Saturday between Saturday, September 22 and Saturday, November 24**

### Jizake-bune at Kintaikyo あき きんたいきょう じざけぶね 秋の錦帯橋 地酒舟

**TIME:** Noon – 1:00 pm

**PLACE:** Nishiki-gawa River, Iwakuni City

**DIRECTION:** Take a bus from JR Iwakuni Station (JR Sanyo Line) and get off at Kintaikyo.

**FEE:** ¥3,000 (including a lunch box and sake fee)

<sup>2</sup> Reservations are required at least 3 days before the day you wish to go.

**INQUIRIES:** *Iwakuni City Kanko Kyokai, Ukai Office (Tourist Association)* 0827-28-2877

© You can enjoy a boat tour with Iwakuni's local dishes and sake.

**Saturday, October 20 & Sunday, October 21** √ Main events will be held on the 21<sup>st</sup>.

### The 62<sup>nd</sup> Iwakuni Festival だい かいいわくにまつり 第62回岩国祭

**TIME:** w Oct. 20: 4:30 pm – 8:20 pm w Oct. 21: 9:30 am – 4:40 pm

**PLACE:** w Oct. 20: *Iwakuni-shi Bunka Kaikan* w Oct. 21: Around JR Iwakuni Station

**DIRECTION:** Get off at JR Iwakuni Station (JR Sanyo Line).

**INQUIRIES:** *Iwakuni Shoko Kiagisho* 0827-21-4201

© Various parades will be held at this festival.

**Sunday, October 21 & 28; Sunday, November 4 & 25; Sunday, December 2 & 23**

### Shooting Practice with Iwakuni-han Teppo-tai (Iwakuni Clan Gunmen)

いわくにはんでっぼうたいくねんひろう  
岩国藩鉄砲隊訓練披露

**TIME:** From 11:20 am onward

<sup>2</sup> From 11:50 am onward on September 30 & October 21

**PLACE:** Riverside under the Kintaikyo Bridge, Iwakuni City

**DIRECTION:** Take a bus from JR Iwakuni Station (JR Sanyo Line) and get off at Kintaikyo.

**INQUIRIES:** *Kanko Shinko Ka, Iwakuni City Hall* 0827-29-5116

© The Iwakuni Clan Gunmen will show the shooting practice of *hinawaju* (arquebus) guns.



Please feel free to contact the International Exchange Lounge at 082-247-9715.

E-mail: [golounge@pcf.city.hiroshima.jp](mailto:golounge@pcf.city.hiroshima.jp)

October 2018

# Municipal Facilities



## G Facilities

(Address / Telephone / Open Hours / Closed / Admission Fee / URL)

Admission is generally allowed up to 30 min. prior to closing.

## P Hiroshima City Forest Park & Insectarium

(173 Fujigamaru, Fukuda-cho, Higashi-ku 732-0036 / Forest Park: 899-8241, Insectarium: 899-8964 / Forest Park: 9:00 am - 4:30 pm; Insectarium: 9:00 am - 4:30 pm / Closed: Forest Park - Wednesdays; Insectarium - Wednesdays / Admission Fees for the Insectarium: Adults-¥510, Seniors & high school students-¥170, Junior high & elementary school students-Free (Free admission for high school students on Saturdays (except on national holidays and during school holidays)) / Forest Park: <http://www.daiichib-shitei.com/forest/> Insectarium: <http://www.hiro-kon.jp/>)

✓ The Forest Park & Insectarium have been closed temporarily due to the heavy rain disasters in the western Japan in July.

## E The Hiroshima Botanical Garden

(3-495 Kurashige, Saeki-ku 731-5156 / 922-3600 / 9:00 am - 4:30 pm / Closed on Friday / Adults-¥510, Seniors & high school students-¥170, Junior high and elementary school students-Free (Free admission for high school students on Saturdays (except on national holidays and during school holidays)) / <http://www.hiroshima-bot.jp/>)

<Exhibitions> Exhibitions will close at 3:30 pm on their last day.

### ✓ Tenji Shiryo-kan

{ Special Exhibition: Baobab / Until Tuesday, December 25

### ✓ Tenji Onshitsu (hothouse exhibitions)

{ Cactus / Until Sunday, October 14

{ Autumn Orchids / Saturday, October 27 - Sunday, November 4

{ Kanran (a type oriental orchid) / Saturday, November 10 - Thursday, November 15

### ✓ Okugai Tenji-jo (outdoor exhibitions)

{ Autumn Wild Plants / Saturday, October 6 - Thursday, October 11

{ Gardening Contest Exhibition / Saturday, October 27 - Sunday, November 4

{ Hanging Baskets / Saturday, October 27 - Sunday, November 4

{ Chinese Chrysanthemums / Saturday, October 27 - Sunday, November 11

### <Event>

{ Anniversary Events for the Opening of the Botanical Garden / Saturday, November 3

² Various events such as gardening lectures and concerts will be held.

² Potted flowers will be given away to the first 1,000 people.

² Free admission on November 3 (except parking fee)

### <Gardening Lessons>

{ Autumn Wild Plants / Sunday, October 7 / 1:30 pm - 2:30 pm

{ Junior Project / Sunday, October 14 & November 11 / j 11:00 am - noon k 1:30 pm - 2:30 pm

{ Kanran (a type oriental orchid) / Sunday, November 11 / 1:30 pm - 2:30 pm

{ Lecture: Baobab / Friday, November 23 / 1:30 pm - 3:00 pm

{ Autumn Gardening Lesson / Saturday, November 24 / 1:30 pm - 3:30 pm / Fee: ¥2,000 for materials

TO APPLY: Send an *ofuku-hagaki* (return postcard) with your name, address and

telephone number and the event name <sup>あき</sup>秋のガ

ーデニング講座 (“*Aki no gardening kouza*”) to the Botanical Garden by Monday, November 12.

20 people will be selected at random from a list of names.

{ Make a Christmas Wreath / Sunday, November 25 / 1:30 pm - 3:00 pm / Fee: ¥1,800 for materials

TO APPLY: Send an *ofuku-hagaki* (return postcard) with your name, address, telephone number, and the event name クリスマスリー

ス作り講習会 (“*Christmas wreath zukuri koushu kai*”) to the botanical garden by Monday,

November 5. 30 people will be selected at random from a list of names.

## ㇿ 5-Days Children’s Museum of Culture and Science

(5-83 Moto-machi, Naka-ku 730-0011 / 222-5346 / 9:00 am - 5:00 pm / Closed on October 1, 9, 10, 15, 22 & 29 / Admission fee for planetarium is required (see below).

/ <http://www.pyonta.city.hiroshima.jp/>)

Please feel free to contact the International Exchange Lounge at 082-247-9715.

E-mail: [golounge@pcf.city.hiroshima.jp](mailto:golounge@pcf.city.hiroshima.jp)

October 2018

## Planetarium

- I Admission Fee for Planetarium:  
Adults-¥510, Seniors & high school students-¥250, Junior high & elementary school students-Free <sup>2</sup> Free admission for high school students on Saturdays (except on most national holidays and during school holidays). Admission fee for adults is ¥250 on the second Saturday of every month (except on most national holidays and during school holidays).
- ¶ Planetarium Programs / Adults-¥510, Seniors & high school students-¥250  
 ☒ Africa Pole Pole: Hear African stories of how the sky came to be so bustling, set to African music (45 min.) / Until Sunday, March 3, 2019  
Time Schedule  
 ✓ Weekdays: 11:00 am  
 ✓ Sat., Sun., national holidays:  
 • 10:00 am , 3:00 pm
- Planet of Dolphins (45 min.) / Until Sunday, January 20, 2019  
Time Schedule  
 ✓ Weekdays: 2:00 pm  
 ✓ Sat., Sun., national holidays:  
 • 11:00 am , 2:00 pm
- ¶ 360° Full Dome Show / Adults-¥510, Seniors & high school students-¥250  
Time Schedule  
 ✓ Weekdays: 3:00 pm  
 ✓ Sat., Sun. & national holidays: 1:00 pm
- ☒ HAYABUSA2 - Return to the Universe (40 min.) / Until Friday, October 26
- Dinosaurs (35 min.) / Saturday, October 27 - Friday, April 26, 2019
- ¶ Refretarium: 2018 Autumn Program / Until Friday, November 30  
Time Schedule  
 ✓ Weekdays: 1:00 pm  
 ✓ Sat. & national holidays: 4:00 pm
- Admission Fee  
 High school students and above-¥200  
<sup>2</sup> This is a program for refreshing your mind and body during lunch time while watching the starry sky and listening to music. Although the main target of this program is adults, anyone who wishes to rejuvenate themselves is welcome.
- ¶ Starry Sky Tour  
 ☒ Tonight's Starry Sky & Mar's Close Approach to Earth 2018 / Sundays until October 14 / 4:00 pm - 4:50 pm / Adults-¥510, Seniors & high school students-¥250
- Tonight's Starry Sky & Starry Sky Tour around the World / Sundays Between October 21 and January 20, 2019 / 4:00 pm - 4:50 pm / Adults-¥510, Seniors & high school students-¥250

## Events

- ¶ Exhibition: Chirping Autumn Insects co-organized by Hiroshima City Forest Park, Insectarium / Until Monday, October 8 / 2F, Kaigi-shitsu
- ¶ Saxophone Quartet Concert / Sunday, October 7 / • Noon - 12:30 pm , 2:30 pm - 3:00 pm (Doors will open at 11:45 am for • & at 2:15 pm for , .) / Apollo Hall (250 seats) / Free admission
- ¶ Craft Workshops / Saturday, October 6 & 13 / 1:00 pm - 3:30 pm / For children under elementary school entry age, elementary school students (1<sup>st</sup> - 3<sup>rd</sup> grade) and their guardians / 3F, Kosaku-shitsu (Craft Room) / Fee: ¥30 for materials  
<sup>2</sup> Each day's program is different. For more information, please contact the museum.
- ¶ Science Show: Science of Fire / Monday, October 8 / • 1:30 pm - 2:00 pm , 3:00 pm - 3:30 pm / 1F, Science Studio / Fee: Free

μ The events listed below require advance applications.

To APPLY: Send an *ofuku-hagaki* (return postcard) to the museum, postmarked no later than each event's application deadline, with the following information: applicants' names, addresses, a telephone number, school year and the event name and time of the event you wish to attend.

## Science Workshop

- ® Nature Observation at Mt. Futaba / 二葉山の自然観察 ~シリブカガシの森へ行くこう~  
 ("Futaba-yama no shizen kansatsu ~shiribukagashi no mori e ikou~") / Sunday, November 4 / 10:00 am - 1:00 pm / For elementary school students / Fee: ¥300 / Closing date for applications: Sunday, October 21 <sup>2</sup> 20 people will be selected at random from a list of names.

## Craft Workshops

- ® Make a Cloisonné Metal Wall Decoration / 七宝焼きの壁飾り ("Shippo-yaki no kabekazari") / Saturday, November 3 / 9:30 am - 3:30 pm / For elementary (3<sup>rd</sup> - 6<sup>th</sup> grade) & junior high school students / Fee: ¥1,000 / Closing date for applications: Saturday, October 20 <sup>2</sup> 12 people will be selected at random from a list of names.
- ® Craft Workshop for Adults: Clay Flower / 大人の創作教室 : パンフラワー ("Otona no sosaku kyoshitsu: pan flower") / Friday, November 9 / 9:30 am - noon / For High school students and above / Fee: ¥2,200 / Closing date for applications: Friday, October 26

Please feel free to contact the International Exchange Lounge at 082-247-9715.

E-mail: [golounge@pcf.city.hiroshima.jp](mailto:golounge@pcf.city.hiroshima.jp)

October 2018

<sup>2</sup> 12 people will be selected at random from a list of names.

- Ⓜ **Wood Craft Workshop / どもも 木工 教室**  
 (“*Kodomo mokkou kyoushitsu*”) / Sunday,  
 November 11 / 9:30 am - 3:30 pm / For  
 elementary (3<sup>rd</sup> - 6<sup>th</sup> grade) & junior high school  
 students / Fee: ¥1,000 / Closing date for  
 applications: Sunday, October 28 <sup>2</sup> 12 people  
 will be selected at random from a list of  
 names.

- J Hiroshima City Asa Zoological Park**  
 (Asa-cho Dobutsuen, Asakita-ku 731-3355 / 838-  
 1111 / 9:00 am - 4:30 pm / Open every day in  
 October / Adults-¥510, Seniors & high school  
 students- ¥170, Junior high & elementary  
 school students-Free / <http://www.asazoo.jp/>)

### J Admission free on November 3

- **Asa Zoo & “Miyaji-marine” (Miyajima Public Aquarium) Collaboration Event 2018: Stamp Rally** / Until Sunday, March 31, 2019
- **Exhibition: Animals in Africa** / Until Sunday, October 21
- **Zoo Café ~ Animal Lecture by Zoo Keepers ~** / Sunday, October 7, 14, & 21 / 1:00 pm - 1:30 pm / *Yagai* Stage
- **Animal Weight & Length Quiz** / Sunday, October 28 / From 11:30 am onward  
<sup>2</sup> The person who guesses the right answer will win a prize.
- **Backyard Guide Tour** / Saturday, October 6, 13, 20 & 27 / j 11:00 am (except the 27<sup>th</sup>)  
 k 1:30 pm / Please gather near the entrance at 9:00 am on each activity day. The first 10 - 30 people can participate. The number of participants will differ depending on where you visit. We will explore a different place on each trip.
- **Giant Salamander Facility Tour** / Saturday, October 27 / 11:00 am - 11:45 am  
<sup>2</sup> Participation tickets will be distributed from 9:00 am at the main entrance until 20 spots are filled.
- **Labor Thanksgiving Day: Give Thanks to Animals** / Friday, November 23 / From 11:00 am onward
- **Watching Giraffes and Feeding Experiment** / Sunday, November 25 / From 11:00 am onward  
<sup>2</sup> Participation tickets will be distributed for the first 50 people from 10:30 am on the day.



Please feel free to contact the International Exchange Lounge at 082-247-9715.

E-mail: [golounge@pcf.city.hiroshima.jp](mailto:golounge@pcf.city.hiroshima.jp)

October 2018

- Ⓜ **Numaji Transportation Museum (Hiroshima City Transportation Museum)**  
 (2-12-2 Chorakuji, Asaminami-ku 731-0143 / 878-6211 / 9:00 am - 5:00 pm / Closed on October 1, 9, 10, 11, 15, 22 & 29 / Adults-¥510, Seniors & high school students-¥250, Junior high school students and under-Free  
 / <http://www.vehicle.city.hiroshima.jp>)

- Ⓜ **Autumn Special Exhibition: Expressway** / Friday, October 12 - Sunday, December 2 / 9:00 am - 5:00 pm / Fee: museum admission

### Ⓜ **Special Exhibition-Related Events** Ⓜ

- <sup>a</sup> **Check Your Visual Performance with “Drivers’ Vision”** / Saturday, October 20 /  
 • 10:00 am - noon , 1:30 pm - 3:30 pm / 1F, Entrance Hall / Fee: Free
- <sup>a</sup> **Picture-Book Reading** / Sunday, October 21 / 11:00 am - 11:30 am / 1F, *Tamokuteki Hall* / Fee: Free
- <sup>a</sup> **Driving and VR Goggle Experiences** / Saturday, October 27 /  
 • 10:00 am - noon , 1:30 pm - 3:30 pm / 1F, *Tamokuteki Hall* / Fee: Free <sup>2</sup> Driving experience is for children; VR goggle experience is for high school students and above.
- Ⓜ **The 2<sup>nd</sup> Astram Line Festival** / Sunday, October 14 / 10:00 am - 4:00 pm
- Ⓜ **Astram Line Rail Yard Tour** / • 10:00 am - 10:40 am k 11:00 am - 11:40 am  
<sup>2</sup> This event is restricted to users of the Astram Line. You will need a certificate of use issued on the day at Chorakuji Station.  
<sup>2</sup> Numbered tickets will be distributed from 9:00 am at 1F, entrance hall on the day. Participation limited to the first 50 people for each time slot.
- Ⓜ **Maple Kaiser Show** / • 1:30 pm - 2:00 pm k 3:00 pm - 3:30 pm / 1F, *Tamokuteki Hall* / Fee: Free J *Maple Kaiser* is a local hero in Hiroshima.
- Ⓜ **Children’s Craft Workshop: Milk Carton Astramline** / 1:00 pm - 3:30 pm / For preschoolers, elementary school students and their guardians / 1F, *Tamokuteki Hall* / Fee: ¥50 for materials <sup>2</sup> Participation limited to the first 100 groups.

- Ⓜ **Science Show: Fire Experiment Show** / Saturday October 13 / j 11:30 am - 11:50 am k 1:30 pm - 1:50 pm f 2:30 pm - 2:50 pm / 1F, *Tamokuteki Hall* / Fee: Free
- Ⓜ **Exhibition of a Streetcar Exposed to the A-Bomb** / Saturday, October 13 / j 11:00 am - noon k 1:30 pm - 3:00 pm / *Okugai Hiroba* (outdoor open space) / Fee: Free <sup>2</sup> This will be canceled if the weather is bad.



- Ž **Vehicle Land: Playing with Toy Cars**  
/ Saturday, October 20 & Sunday, October 21 /  
1:00 pm - 4:00 pm / 1F, *Tamokuteki Hall* /  
Fee: Free
- Ž **Children's Craft Workshops** / Sunday, October  
7, 14, 21 & 28; Monday, October 8 / 1:00 pm -  
3:30 pm / For preschoolers, elementary school  
students and their guardians / 1F, Craft Room  
/ Fee: ¥50 for materials ² Participation  
limited to the first 100 groups.
- Ž **Craft Workshop for Adults: Slide for toy cars**  
/ Wednesday, October 17 / 10:00 am - 1:00  
pm / 1F, Craft Room / For 16 year olds and  
above / Fee: ¥1,700 for materials  
**To APPLY:** Send an *ofuku-hagaki* (return  
postcard) with applicant's name, address,  
telephone number, age, event date and the  
event name おとな こうさくきょうしつ **大人の工作教室 カースライダー**  
— ("*Otona no kousaku kyoushitsu: car  
slider*") to the museum by Sunday, October 7.  
12 people will be selected at random from a  
list of names.

### Ø Hiroshima City Ebayama Museum of Meteorology

(1-40-1 Eba-minami, Naka-ku 730-0835 /  
231-0177 / 9:00 am - 5:00 pm / Closed on  
Mondays (except October 8) & October 9 /  
Adults-¥100, Seniors & high school students-  
¥50, Junior high & elementary school students-  
Free (Free admission for high school students  
on Saturdays except during school holidays)  
/ <http://www.ebayama.jp/>)

- T **Science Shows** / j 1:30 pm - 2:00 pm  
, 3:00 pm - 3:30 pm
- ® **Experiments with Fire** / October 6 (Sat.), 7  
(Sun.), 8 (Mon.) & 14 (Sun.)
- ® **Experiments with Air and Water** / October  
20 (Sat.), 21 (Sun.), 27 (Sat.) & 28 (Sun.)
- T **Science Workshop: Magical Piggy Bank** /  
Saturday, October 13 / 1:00 pm - 3:30 pm / For  
junior high school students and under / Fee:  
¥100 for materials ² Entry can be purchased  
from 10:00 am on the day, up to 50 people.
- T **Nature Science: Nature of Mt. Ebayama** /  
Sunday, October 28 / 2:00 pm - 3:30 pm /  
Participation fee: ¥50 ² The first 50  
participants will be accepted from 10:00 am on  
the day. ² Elementary school students and  
under should be accompanied by their  
guardians.
- T **Culture Day Event: Science is Fun** / Saturday,  
November 3 / 10:00 am - 4:00 pm  
² Free admission on November 3



### H Hiroshima City Museum of History and Traditional Crafts

(2-6-20 Ujina-miyuki, Minami-ku 734-0015 / 253-  
6771 / 9:00 am - 5:00 pm / Closed on Mondays  
(except October 8) & October 9 / Adults-¥100,  
Seniors & high school students-¥50, Junior high  
school students and under-Free  
/ <http://www.cf.city.hiroshima.jp/kyodo/>)

#### P Special Exhibitions:

® **Life in the Past** / Until Sunday, November 25

#### P Workshops

- ® **Make an Otedama** (small beanbag used as a  
toy) / Saturday, October 20 / 1:00 pm - 3:00  
pm / Elementary school students and their  
guardians / Fee: ¥250 (Admission fee for the  
museum is also required.) ² Applications  
will be accepted by phone or fax between  
October 2 and 5. 10 postcards will be  
selected at random from a list of names.
- ® **Make a Dagashi** (molded confection) /  
Saturday, November 3 / 10:00 am - 4:00 pm /  
Participation fee: Free (May require a  
participation fee.)  
² Free admission on November 3
- ® **Make an Original Postcard** / Saturday,  
November 17 / 1:00 pm - 3:00 pm /  
Elementary school students / Fee: ¥100  
(Admission fee for the museum is also  
required.) ² Applications will be accepted  
by phone or fax between November 1 and 4.  
20 people will be selected at random from a  
list of names.
- ® **Make a New Year's Greeting Card** /  
Saturday, November 24 / 1:00 pm - 3:00 pm /  
Elementary school students and their  
guardians / Participation fee: ¥250  
(Admission fee for the museum is also  
required) ² Applications will be accepted  
by phone or fax between November 1 and 4.  
10 groups will be selected at random from a  
list of names.

### 5 Hiroshima City Cinematographic and Audio-Visual Library

(3-1 Moto-machi, Naka-ku 730-0011 / 223-3525 /  
10:00am - 8:00pm (Tue.-Sat.), 10:00 am -  
5:00 pm (Sunday, national holidays & August 6) /  
Closed on Mondays (except October 8) & October  
9 / **35mm Film Showings** Adults-¥510, Seniors  
& High school students-¥250, Junior high school  
students and under-Free; **Other Film Showings**  
Adults-¥380, Seniors & high school students-  
¥180, Junior high school students and under-  
Free, Admission free for foreign students (Please  
show your student ID or the Hiroshima  
International Center Complimentary Pass.) /  
<http://www.cf.city.hiroshima.jp/eizou/>)

Please feel free to contact the International Exchange Lounge at 082-247-9715.

E-mail: [golounge@pcf.city.hiroshima.jp](mailto:golounge@pcf.city.hiroshima.jp)

October 2018

• **October Special Showings of Masterpieces of Japanese Film: Yuzo Kawashima, a Japanese director** (Screened in Japanese only)

I **Admission Fee:** Adults-¥510, Seniors (65 years old and above) & high school students-¥250, Junior high & elementary school students-Free  
 « October 11 & 17: Adults-¥380, Seniors (65 years old and above) & high school students-¥180, Junior high & elementary school students-Free

Ÿ **Thursday, October 11** / j 10:30 am k 2:00 pm  
 f 6:00 pm

**Ginza 24 chou** / 銀座二十四帖 (1955, Nikkatsu, 117 min., B&W, 16 mm film) / Director: Yuzo Kawashima / Cast: Yumeji Tsukioka, Tatsuya Mihashi, Seizaburo Kawazu, Mie Kitahara

Ÿ **Friday, October 12** / j 10:30 am k 2:00 pm  
 f 6:30 pm

**Suzaki paradise: Akashingo** / 州崎パラダイス赤信号 (1956, Nikkatsu, 81 min., B&W, 35 mm film) / Director: Yuzo Kawashima / Cast: Michiyo Aratama, Tatsuya Mihashi, Yukiko Todoroki, Seizaburo Kawazu

Ÿ **Wednesday, October 17** / j 10:30 am k 2:00 pm  
 pm f 6:30 pm

**Waga machi** / わが町 (1956, Nikkatsu, 98 min., B&W, DVD) / Director: Yuzo Kawashima / Cast: Ryutarō Tatumi, Yoko Minamida, Shiro Osaka, Taiji Tonoyama

Ÿ **Thursday, October 18** / j 10:30 am k 2:00 pm  
 f 6:00 pm

**Bakumatsu taiyoden** / 幕末太陽傳 (1957, Nikkatsu, 110 min., B&W, 35 mm film) / Director: Yuzo Kawashima / Cast: Frankie Sakai, Sachiko Hidari, Yoko Minamida, Yūjiro Ishihara

Ÿ **Friday, October 19** / j 10:30 am k 2:00 pm  
 f 6:00 pm

**Kashima ari** / 貸問あり (1959, Takarazuka Eiga, 112 min., B&W, 35 mm film) / Director: Yuzo Kawashima / Cast: Frankie Sakai, Chikage Awashima, Kōkinji Katsura, Nobuko Otowa

Ÿ **Thursday, October 25** / j 10:30 am k 2:00 pm  
 f 6:30 pm

**Gan no tera** / 雁の寺 (1962, Daiei (Kyoto), 98 min., B&W, color, 35 mm film) / Director: Yuzo Kawashima / Cast: Ayako Wakao, Masao Mishima, Isao Kimura, Kuniichi Takami

Ÿ **Friday, October 26** / j 10:30 am k 2:00 pm  
 f 6:30 pm

**Aokabe monogatari** / 青かべ物語 (1962, Tokyo Eiga, 100 min., color, 35 mm film) / Director: Yuzo Kawashima / Cast: Hisaya Morishige, Eijiro Tono, Sachiko Hidari, Frankie Sakai

Ÿ **Wednesday, October 31** / j 10:30 am k 2:00 pm  
 pm f 6:30 pm

**Shitoyakana kemono** / しとやかな獣 (1962, Daiei (Kyoto), 96 min., color, 35 mm film) /

Director: Yuzo Kawashima / Cast: Ayako Wakao, Yunosuke Ito, Eiji Funakoshi, Hideo Takamatsu

• **Iri & Toshi Maruki (Documentary films)**  
 (Screened in Japanese only)

I **Admission Fee:** Adults-¥380, Seniors (65 years old and above) & high school students-¥180, Junior high & elementary school students-Free

Ÿ **Saturday, October 20** / j 10:30 am k 2:00 pm

**Minamata no zu / monogatari** / 水俣の図・物語 (1981, Seirinsha, 113 min., color, 16 mm film) / Director: Noriaki Tsuchimoto / Cinematography: Junichi Segawa, Masafumi Ichinose / Music: Toru Takemitsu / Poems: Michiko Ishimure

Ÿ **Sunday, October 21** / j 10:30 am k 2:00 pm  
 ® 3 films, 99 min.

U **Genbaku no zu** / 原爆の図 (1953, Shinsei Eigasha, 17 min., B&W, 16 mm film) / Director: Tadashi Imai, Michiharu Aoyama / Cinematography: Susumu Urashima / Narration: Ranko Akagi

V **Hiroshima no pika** / ひろしまのピカ (1987, Siglo, Maruki Gallery for the Hiroshima Panels, 24 min., color, DVD) / Director: Noriaki Tsuchimoto / Pictures & words: Toshi Maruki / Music: Hitoshi Komuro / Narration: Chinatsu Nakayama, Keiko Takeshita

W **Hellfire: A Journey from Hiroshima** / Hellfire 劫火 - ヒロシマからの旅 (1988, Siglo, 58 min., color, 16 mm film) / Director: John Junkerman

• **Korea Week in Hiroshima**  
 (Screened in original language with Japanese subtitles)

I **Free Admission**

Ÿ **Friday, October 5** / j 2:00 pm k 6:00 pm  
 / **The Fatal Encounter / King's Wrath**

(2014, South Korea, 137 min., color, Blu-ray, Japanese subtitles) / Director: Jae-Gyu Lee / Cast: Hyun Bin, Jae-yeong Jeong, Jung-suk Jo

Ÿ **Saturday, October 6** / j 2:00 pm k 6:00 pm  
 / **Snowpiercer** (2013, South Korea, USA,

France, 125 min., color, Blu-ray, Japanese subtitles) / Director: Joon-ho Bong / Cast: Chris Evans, Kang-ho Song, Ed Harris

Ÿ **Sunday, October 7** / j 10:30 am k 2:00 pm  
 / **Finding Mr. Destiny** (2010, South

Korea, 112 min., color, Blu-ray, Japanese subtitles) / Director: You-jeong Chang / Cast: Soo-jung Lim, Yoo Gong, Ho-jin Chun

Ÿ **Monday, October 8** / j 10:30 am k 2:00 pm  
 / **The Himalayas** (2015, South Korea, 124

min., color, Blu-ray, Japanese subtitles) / Director: Seok-hoon Lee / Cast: Jung-min Hwang, Woo Jung, Sung-ha Jo

Please feel free to contact the International Exchange Lounge at 082-247-9715.

E-mail: [golounge@pcf.city.hiroshima.jp](mailto:golounge@pcf.city.hiroshima.jp)

October 2018

Ÿ Wednesday, October 10 / j 2:00 pm k 6:30 pm

/ *Miracles on the Piano* (2015, South Korea, 80 min., color, Blu-ray, Japanese subtitles) / Director: Lim Sung-ku / Cast: Ye-eun Yoo, Jung-soon Park, Jang-joo Yoo

- **International Animation Day 2018 in Hiroshima** (Screened in original language)
  - J Prize-winning films of Hiroshima International Animation Festival will be screened.
  - DATE: Saturday, October 27
  - TIME: • 2:00 pm , 6:00 pm
  - ADMISSION FEE: Free



Please feel free to contact the International Exchange Lounge at 082-247-9715.  
E-mail: [golounge@pcf.city.hiroshima.jp](mailto:golounge@pcf.city.hiroshima.jp)  
October 2018

# Library News

OCTOBER 2018

## Recommended Books for This Month

### The Signature of All Things

By Elizabeth Gilbert (Penguin Books, 2014)

### Shutter Island

By Dennis Lehane (Harper, 2011)

### Sweet Tooth

By Ian McEwan (Vintage Books, 2013)

### Crime & Guilt

By Ferdinand von Schirach

Translated from the German by Carol Brown Janeway (Vintage Books, 2012)

### Sweeney Todd; or the String of Pearls

By Anonymous

with an introduction by Dick Collins (Wordsworth Editions, 2007)

What other books should we add to our collection? Your suggestions are always welcome!

ut wvut wvut wvut wvut wvut wvut wvut wvut wvut wvut wvut wvut wvut wvut wvut

## Library Corner

**LOCATION:** International Conference Center Hiroshima (ICCH), 1<sup>st</sup> Floor

**T E L L :** (082)247-9715

**H O U R S :** 9:00 am - 7:00 pm (From April 1 to September 30)

9:00 am - 6:00 pm (From October 1 to March 31)

**C L O S E D :** December 29 through January 3

**BOOK LOAN POLICY:**

Up to three books may be borrowed for a two-week period. To obtain an ICCH Library Card, you need to bring identification which has your address, and for foreign residents, your period of stay in Japan. (A Japanese driver's license, student identification card, passport or resident card is an acceptable form of identification.)



Please feel free to contact the International Exchange Lounge at 082-247-9715.

E-mail: [golounge@pcf.city.hiroshima.jp](mailto:golounge@pcf.city.hiroshima.jp)

October 2018

# 図書だより

2018年10月

今月のおすすめ図書

あれも、これも、おいしい手作り生活。  
まめこ / 絵と文 (サンクチュアリ出版, 2009年)

陽気なギャングが地球を回す:長編サスペンス書下ろし  
伊坂 幸太郎 / 著 (祥伝社, 2003年)

海炭市叙景  
佐藤 泰志 / 著 (小学館, 2010年)

アンデッド 不死症  
周木 律 / 著 (実業之日本社, 2016年)

美女と竹林  
森見 登美彦 / 著 (光文社, 2010年)

本のリクエストなど図書コーナーに関するご要望はスタッフまでお気軽にお申し出ください。

¥◎

## 図書コーナー

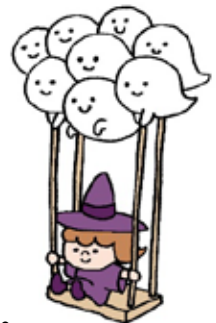
場 所: 広島国際会議場 1F・国際交流ラウンジ (平和記念公園内)  
TEL (082)247-9715

開館時間: 9:00am - 7:00pm (4月1日から9月30日まで)  
9:00am - 6:00pm (10月1日から3月31日まで)

休館日: 12月29日 ~ 1月3日

貸出: 図書は2週間を期限として、1回3冊まで借りることができます。

初めて利用する際には、住所や在留期間(外国人の方)を証明するもの(運転免許証・学生証・パスポート・在留カードなど)を提示してください。



Please feel free to contact the International Exchange Lounge at 082-247-9715.

E-mail: [golounge@pcf.city.hiroshima.jp](mailto:golounge@pcf.city.hiroshima.jp)

October 2018

## Assisting with International Cooperation with Used Stamps & PET Bottle Caps

The International Exchange Lounge collects used stamps to assist international cooperation activities. Through the volunteer groups, JOCS\*, the collected stamps are sold to collectors to raise money. With the profit, items such as milk and medicine are purchased and doctors as well as nurses are dispatched throughout Asia and other continents. We also collect PET bottle caps in order to support the "Ecocap Action". The sales profits obtained by recycling caps are donated to the Japan Committee "Vaccines for the World's Children" (JCV).

\*JOCS: Japan Overseas Christian Medical Cooperative Service

### HOW TO COLLECT:

- © **Stamps** ☪ When you cut stamps from envelopes, please leave 5 mm of paper around them. It is not necessary to remove them from the envelope. Torn or folded stamps cannot be accepted.
- © **PET Bottle Caps** ☪ Only PET bottle caps for drinks or mineral water are accepted. Please wash the caps and tear off the sticker if it has one. This is in order to avoid damaging the recycling machines. Things such as metal caps and pull-top tabs cannot be accepted.

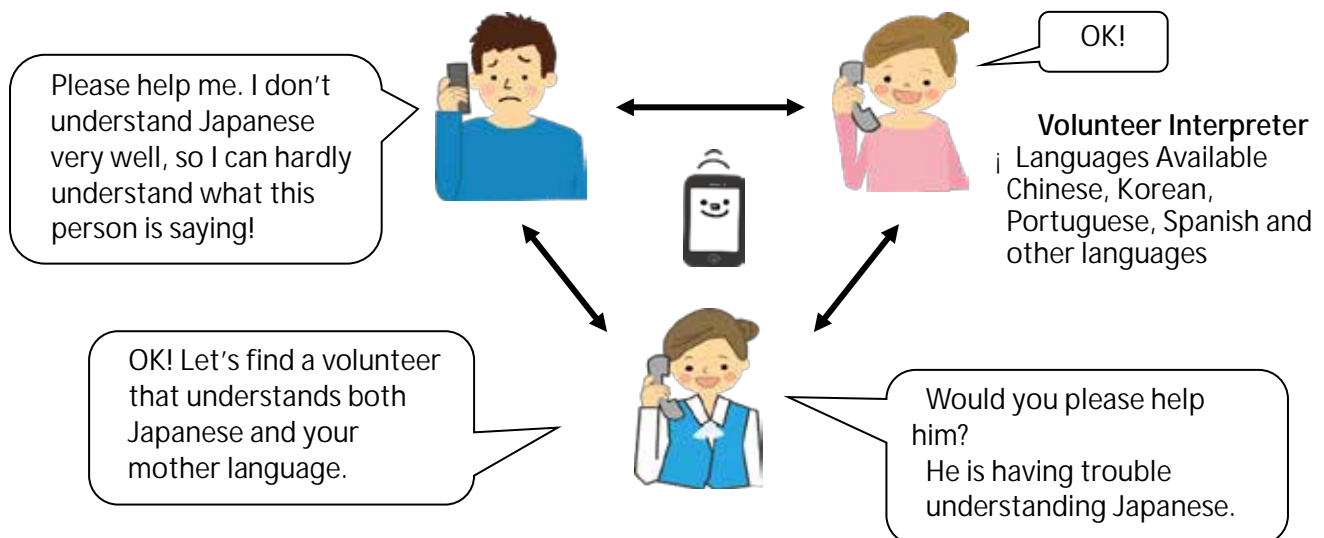
## Trio-Phone Service (Multilingual Interpretation over the Telephone)



### What is Trio-Phone ?

Trio-Phone Service allows three people to have a conversation at the same time through the telephone. If you are having difficulties communicating in Japanese, call the International Exchange Lounge (082-247-9715).

A volunteer interpreter will help you through the Trio-Phone Service!



For further information, please ask the staff at the International Exchange Lounge.

Please feel free to contact the International Exchange Lounge at 082-247-9715.

E-mail: [golounge@pcf.city.hiroshima.jp](mailto:golounge@pcf.city.hiroshima.jp)

# Garbage Disposal Information

Separate garbage properly and take it to the collection site by 8:30am on the designated day. Please do NOT take garbage to the site on the night before. Garbage collection days vary depending on where you live and the category of the refuse. For further details, consult your local ward office or your neighbors to be sure of the proper disposal method. "Hiroshima 8", a handbook on how to separate garbage, and "Hiroshima City Garbage Disposal Guidelines for the 2017 fiscal year", a garbage chart with schedules of garbage collection days, are available at ward offices, branch offices and community halls. The Handbook and Guidelines are translated into English, Spanish, Portuguese, Chinese and Korean. These are also available at the International Exchange Lounge (International Conference Center Hiroshima), so please ask the staff if you need them.

---

HIRO CLUB NEWS is published monthly and provides essential and entertaining information about life in Hiroshima City. It is available in print at the International Exchange Lounge, and online at our website: <http://www.pcf.city.hiroshima.jp/ircd/english/hiroclubnews/> Selected information is also available in other languages including Chinese, Portuguese and Spanish.

HIRO CLUB NEWS は広島的生活情報やイベント等の情報を掲載している月刊情報誌です。国際交流ラウンジにて配布しています。当課ホームページ(<http://www.pcf.city.hiroshima.jp/ircd/english/hiroclubnews/>)にも掲載しています。英語版の情報の一部を抜粋した中国語・ポルトガル語・スペイン語版も作成しています。

\* \* \* \* \*

Edited and published by the Hiroshima Peace Culture Foundation  
International Affairs Department, International Relations and Cooperation Division  
Tel: (082) 242-8879, Fax: (082) 242-7452, E-mail: [internat@pcf.city.hiroshima.jp](mailto:internat@pcf.city.hiroshima.jp)  
International Exchange Lounge  
Tel: (082) 247-9715, E-mail: [golounge@pcf.city.hiroshima.jp](mailto:golounge@pcf.city.hiroshima.jp)  
Website: <http://www.pcf.city.hiroshima.jp/ircd/english/>

編集・発行 公益財団法人広島平和文化センター国際部国際交流・協力課 国際交流ラウンジ  
〒730-0811 広島市中区中島町1番5号