



hiro
club
news

さくら *Sakura* (Cherry Blossoms)

The flower most closely associated with Japan would be the cherry blossom. There's nothing so beautiful as a mass of delicate pink petals in full bloom under a blue spring sky. The cherry blossom is the national flower of Japan, and the word 'flower' alone can often mean cherry blossom. For example, *hanagumori* (literally 'flower-cloudy') refers to cloudy skies during the blossoming season. And *hanabie* (literally 'flower-chill') is a late cold spell when the flowers are already in bloom. Then there's *hanami* (literally 'flower-viewing'), to enjoying the cherry blossoms. Towards the end of March, the progress of the cherry-blossom front called "*Sakura-zensen*" is mentioned on TV and in newspapers.

There are many varieties of blossoming cherry. Those planted in parks and along dikes are usually *someiyoshino*. And most of those that grow wild in the mountains are *yamazakura*. There are also 'weeping' and 'double-flowered' types. Colors range from the palest pink to a reddish shade. (Abstracted from The Japanese-English Dictionary for Conversation about Japanese, pp. 282-283, Obunsha)

In Hiroshima City, there are also beautiful spots filled with full bloomed cherry blossoms. '*Hiroshima Ebayama-zakura*' is a wild cherry tree grown on Mt. Ebayama in Hiroshima City. Usually, most wild cherry trees have blossoms with five petals. However, *ebayama-zakura* have blossoms which consist of five to thirteen petals. This is a quite rare type of cherry tree, so in 1996, it was designated as one of Hiroshima City's protected species.

According to this year's flower forecast, in Hiroshima, cherry blossoms will begin to bloom on March 23 and reach full bloom on April 1. Cherry blossoms don't last very long. They're at their best for only a few days. With a few gusts of wind they're all gone. Please enjoy this short but beautiful season in Japan.

March 2019

March 2019

⌘ City Office Notices

⌘ Movie Theaters

⌘ Bilingual TV Programs

⌘ Concerts & Plays

⌘ Museums

⌘ Sports

- Hiroshima Toyo Carp Schedule 2019
- Sanfrecce Hiroshima FC Game Schedule 2019
- Hiroshima Dragonflies 2018 – 2019 B2 League

⌘ Events

- Seasonal Event Information
- Municipal Facilities

⌘ Lounge & Library

- Library News
- Trio-phone Service
(multilingual interpretation using the telephone)
- Garbage Disposal

Hiroshima Peace Culture Foundation International Exchange Lounge

1-5 Nakajima-cho, Naka-ku, Hiroshima 730-0811

E-mail: golounge@pcf.city.hiroshima.jp

Tel. 082-247-9715 Fax. 082-242-7452

★ Visit the HIRO CLUB NEWS WEBSITE for information online. ★

URL: <http://www.pcf.city.hiroshima.jp/ircd/joho/hiroclub%2001.html>



City Office Notices

City Office Notices contains selected information from the Hiroshima City Newsletter, ひろしま市民と市政 (*Hiroshima Shimin to Shisei*). *City Office Notices* is published twice a month and available in print at the International Exchange Lounge, and online at our website <http://www.pcf.city.hiroshima.jp/ircd/english/hiroclubnews>

Hiroshima Shimin to Shisei is posted on the Hiroshima City Hall website (<http://www.city.hiroshima.lg.jp/>), which has built-in machine translation services for English, Chinese, and Korean.

March 1, 2019

Topics

- * Has your child received a school enrollment notification?
- * Pre-register to use public nursery schools April 28 - May 6
- * Extended ward office opening times March 25 - April 1
- * Don't forget light vehicle tax procedures
- * Legal advice for women

Has your child received a school enrollment notification?

入学通知書は届きましたか (平成31年2月15日号 P6)

At the end of January, the Hiroshima City government sent notifications of school enrollment (入学通知書 *nyugaku tsuchisho*) to parents/guardians whose children (of Japanese nationality) will enter elementary or junior high schools this April. The notifications were also sent to parents/guardians of children of foreign nationality who want to have their children enter a municipal elementary or junior high school this April and thus have already applied for school enrollment.

The notification specifies which schools your child will enter and when. Keep this notification and submit it to your child's designated school on Monday, April 1. This is the registration date for enrollment, not the date of the entrance ceremony. If you have not received this notification or have lost it, please contact the School Affairs Division of the Municipal Board of Education (教育委員会 学事課 *Kyoiku-iinkai, Gakuji Ka*, see below for contact details).

Children of Foreign Nationality

If your child is not a Japanese national and you would like to have him/her enter a municipal elementary or junior high school, please contact the School Affairs Division of the Municipal Board of Education (教育委員会 学事課 *Kyoiku-iinkai, Gakuji Ka*, see below for contact details). If you have already applied for school enrollment, it is not necessary to do this.

If any of the below situations apply to you, information is available on Hiroshima City's website (<http://www.city.hiroshima.lg.jp>). Please refer to the February 15, 2019 issue of the Hiroshima City Newsletter, ひろしま市民と市政 (*Hiroshima Shimin to Shisei*). The website has built-in machine translation services for English, Chinese, and Korean.

- If you are moving in or out of Hiroshima City
- If your child is enrolling in a national, prefectural or private school
- If your child has special needs
- If you have a valid reason why your child will not be able to attend his/her designated school
- If you need financial assistance for school attendance

INQUIRIES: Hiroshima Municipal Board of Education, School Affairs Division
 (教育委員会 学事課 *Kyoiku-iinkai, Gakuji Ka*)
 Tel. 504-2469 Fax. 504-2509

Pre-register to use public nursery school from April 28 to May 6

公立保育園の休日保育は事前登録が必要です(P5)

From April 28 to May 6 this year, public nursery schools (公立保育園 *Koritsu Hoikuen*) will be shut. If you want to use a nursery school during this time for reasons such as work, you must register in advance. Bring in the required form and documents to the nursery school you wish to use, and discuss the matter with their staff. This service is available at the below three schools. Please get the form from them.

The service is available at:

Honkawa Nursery School	Tel. 292-4470
Kogo Nursery School	Tel. 271-4314
Gion Nursery School	Tel. 874-4890

WHO Children living in Hiroshima City who are currently attending a recognized nursery school or other facility for children who cannot be cared for at home during the day.

* *A recognized nursery school or other facility for children who cannot be cared for at home are...*

- 認定保育園 (*Nintei Hoikuen*)
- 認定こども園 (*Nintei Kodomoen*)
- 小規模保育事業所 (*Sho-kibo Hoiku Jigyosho*)
- 事業所内保育事業所 (*Jigyosho-nai Hoiku Jigyosho*)

INQUIRIES: Child Care Planning Division (保育企画課 *Hoiku Kikaku Ka*)
 Tel. 504-2153 Fax. 504-2255

For the administrative procedures necessary for moving-in or out Extended ward office opening times March 25 - April 1

区役所窓口を平日時間延長、土・日曜日開庁します(P2)

The moving season is upon us as we reach the end of the fiscal year and many of us prepare to start new jobs and move into new homes. In order to improve service during this busy time the City has decided to extend ward office opening hours for some services.

In order to handle the administrative procedures necessary for moving-in or out, from March 25 (Mon.) to April 1 (Mon.) the ward offices will extend the hours in which citizens can use certain services on weekdays to 7:00 pm. The offices will also open for these services from 8:30 am to noon on Saturday, March 30 and Sunday, 31st.

*Regular ward office opening hours is 8:30 am to 5:15 pm on Monday to Friday.

*Extended office hours

Dates	March						April	
						30 th	31 st	
Extended hours							8:30 am – Noon	

NOTE: This extended-hour service will only be available at Citizens Affairs Divisions and National Health and Pension Divisions of ward office, not at any branch office.

* Services available during extended hours

For...	Go to...																				
- Change in certificate of residency <small>Jumin hyo no Ido-todoke</small> (住民票の異動届) <small>Inkan Toroku</small> - <i>Inkan</i> registration (印鑑登録)	Citizens Affairs Division (<i>Shimin Ka</i>)	For inquiries, please call... <table> <tr> <td>Naka</td> <td>504-2551</td> <td>Higashi</td> <td>568-7707</td> </tr> <tr> <td>Minami</td> <td>250-8938</td> <td>Nishi</td> <td>532-0930</td> </tr> <tr> <td>Asaminami</td> <td>831-4928</td> <td>Asakita</td> <td>819-3907</td> </tr> <tr> <td>Aki</td> <td>821-4908</td> <td>Saeki</td> <td>943-9709</td> </tr> </table>				Naka	504-2551	Higashi	568-7707	Minami	250-8938	Nishi	532-0930	Asaminami	831-4928	Asakita	819-3907	Aki	821-4908	Saeki	943-9709
Naka	504-2551	Higashi	568-7707																		
Minami	250-8938	Nishi	532-0930																		
Asaminami	831-4928	Asakita	819-3907																		
Aki	821-4908	Saeki	943-9709																		
- Change in eligibility for National Health Insurance <small>Kokumin Kenko Hoken</small> (国民健康保険) - Change of address for national pension <small>Kokumin Nenkin</small> - (国民年金)	National Health and Pension Division (<i>Hoken Nenkin Ka</i>)	For inquiries, please call... <table> <tr> <td>Naka</td> <td>504-2555</td> <td>Higashi</td> <td>568-7711</td> </tr> <tr> <td>Minami</td> <td>250-8941</td> <td>Nishi</td> <td>532-0933</td> </tr> <tr> <td>Asaminami</td> <td>831-4929</td> <td>Asakita</td> <td>819-3909</td> </tr> <tr> <td>Aki</td> <td>821-4910</td> <td>Saeki</td> <td>943-9712</td> </tr> </table>				Naka	504-2555	Higashi	568-7711	Minami	250-8941	Nishi	532-0933	Asaminami	831-4929	Asakita	819-3909	Aki	821-4910	Saeki	943-9712
Naka	504-2555	Higashi	568-7711																		
Minami	250-8941	Nishi	532-0933																		
Asaminami	831-4929	Asakita	819-3909																		
Aki	821-4910	Saeki	943-9712																		
- Applications for child allowance <small>Jido Teate ninteiseikyusho</small> (児童手当の認定請求書) - Applications, changes in eligibility etc. for support for children's medical fees <small>Kodomoiryohi jukyusha shikaku</small> (子ども医療費受給者資格 <small>ninteishinseihenkotodoke</small> 認定申請・変更届)	Citizens Affairs Division (<i>Shimin Ka</i>) *Temporary counter	For inquiries, please call the Health Services & Welfare Division (<i>Hoken Fukushi Ka</i>) of your local ward office (the Welfare Division (<i>Fukushi Ka</i>) of Higashi Ward Office): <table> <tr> <td>Naka</td> <td>504-2569</td> <td>Higashi</td> <td>568-7733</td> </tr> <tr> <td>Minami</td> <td>250-4131</td> <td>Nishi</td> <td>294-6342</td> </tr> <tr> <td>Asaminami</td> <td>831-4945</td> <td>Asakita</td> <td>819-0605</td> </tr> <tr> <td>Aki</td> <td>821-2813</td> <td>Saeki</td> <td>943-9732</td> </tr> </table>				Naka	504-2569	Higashi	568-7733	Minami	250-4131	Nishi	294-6342	Asaminami	831-4945	Asakita	819-0605	Aki	821-2813	Saeki	943-9732
Naka	504-2569	Higashi	568-7733																		
Minami	250-4131	Nishi	294-6342																		
Asaminami	831-4945	Asakita	819-0605																		
Aki	821-2813	Saeki	943-9732																		

NOTE:

- No other services will be available after the regular Ward Office closing time of 5:15 pm.
- Please bring: ID such as a driver's license or passport; your My Number notification slip or My Notification number card; and your *inkan*.

If you have any questions about what kind of documents you need to fill out, please call the relevant division of your local ward office (telephone numbers above). Generally, services are only available in Japanese. If you call outside of regular opening hours during this period, you will first be connected

to Security (*shueishitsu*), then they will transfer you to the office you need. Be advised that in some cases, you may not be able to complete all moving procedures in one day. For further information about this extended-hour service, see the City's official website.

INQUIRIES: General Affairs Divison, General Planning Bureau
(企画総務局総務課 *Kikaku Soumu Kyoku Soumu Ka*) Tel. 504-2112 Fax. 504-2069

Don't forget light vehicle tax procedures

軽自動車税などの申告・手続きをお忘れなく(P5)

You must file for tax and carry out registration procedures in the following situations:

- Within 15 days of acquiring a light vehicle (軽自動車 *kei jidousha*), or moving its main parking spot to within Hiroshima City
- Within 30 days of ceasing to own a light vehicle (disposal, selling, etc.), or moving its main parking spot to outside Hiroshima City.

(1) Motor-assisted bicycles (under 125cc) and small-sized special motor vehicles

File at your nearest tax office:

(<i>Shizei Jimusyo</i>)		(<i>Zeimushitsu</i>)	
Chuo (Central District)	504-2558	Minami	250-8946
Tobu (Eastern District)	568-7715	Aki	821-4913
Seibu (Western District)	532-0937	Saeki	943-9716
Hokubu (Northern District)	831-4932	Asakita	819-3913

*You can also contact your nearest branch office about vehicles you cease to own.

(2) Two-wheel light vehicles (125cc - 250cc)

In addition to filing for the light motor vehicle tax, you must also apply for changes to your vehicle inspection certificate within 15 days of acquiring or ceasing to own a vehicle or moving its main parking spot into or out of Hiroshima City.

FILE & INQUIRE AT:

Ken Kei Jidosha Kyokai (Prefectural Light Motor Vehicle Association)

Tel. 532-5507 Fax. 532-5508 Address: 13-13-3 Kanon-shin-machi 4-chome, Nishi-ku

(3) Three-wheel, four-wheel or more light motor vehicles

In addition to filing for the light motor vehicle tax, you must also apply for changes to your vehicle inspection certificate within 15 days of acquiring or ceasing to own a vehicle or moving its main parking spot into or out of Hiroshima City.

FILE & INQUIRE AT:

Kei-jidosha Kensa Kyokai Hiroshima Shukan Jimusho (Light Motor Vehicle Inspection Association, Hiroshima Office)

Tel. 050-3816-3080 Fax. 503-8524 Address: 13-13-4 Kanon-shin-machi 4-chome, Nishi-ku

(4) Two-wheel small motor vehicle (above 250cc)

In addition to filing for the light motor vehicle tax, you must also apply for changes to your vehicle inspection certificate within 15 days of getting, or ceasing to own a vehicle or moving its main parking spot into or out of Hiroshima City.

FILE & INQUIRE AT:

Chugoku Unyu Kyoku Hiroshima Unyu Shikyoku (District Transport Bureau, Hiroshima Office)

Tel. 050-5540-2068 (Automated voice information service, Japanese)

Fax. 295-3508 Address: 13-13-2 Kanon-shin-machi 4-chome, Nishi-ku

NOTE: The light motor vehicle tax must be paid by people who own a light-vehicle and have a parking space in Hiroshima City as of April 1. Even if you dispose of the car on April 2 or after, you must pay taxes for the 2019 fiscal year.

Legal advice for women

女性司法書士による女性のための相談会 (P5)

You can get advice from a female solicitor in Japanese by phone or in person about things such as inheritance, wills, aging parents, guardianship, divorce, debt, starting a business, and problems at work. For women only.

- **Advice in person** You can book by calling 221-5345

When: March 8 (Fri.) and 9 (Sat.), 10:00 am – 4:00 pm

Where: Hiroshima Solicitors Consultation Center

(広島司法書士会総合相談センター *Hiroshima Shihoshoshi-kai Sogo Sodan Center*)

Address: 6-69 Kami-hatchobori, Naka-ku

- **Advice over the phone (511-7196)**

March 4 – 8 10:00 am – Noon

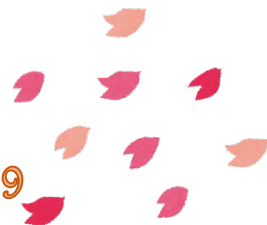
March 9 10:00 am – 4:00 pm

INQUIRIES *Hiroshima Shihoshoshi-kai Jimukyoku* (広島司法書士会事務局)

Tel. 221-5345 Fax. 223-4382

Movie Theaters

March 2019



Here is a general list of movies being shown in theaters around Hiroshima. Due to unpredictable changes in scheduling, listings are subject to change without notice. Foreign films are usually in their original language with Japanese subtitles. When not specified, the admission is **¥1,800** for adults. Theaters offer various kinds of admission discount services, so please inquire at each theater for more information.

SALON CINEMA

[Hiroshima Toei Plaza Bldg. 8F, 16-10 Hatchobori, Naka-ku / Tel: 082-962-7772 / URL: <https://johakyu.co.jp/>]

From February 8 **First Man** / '18 USA
 From March 1 **Green Book** / '18 USA
 From March 8 **A Star is Born** / '18 USA
 From March 15 **The Wife** / '19 Sweden, USA, UK
 From March 22 **If Beale Street Could Talk** / '18 USA

HATCHOZA

[Fukuya Department Store Hatchobori 8F, 6-26 Ebisu-cho, Naka-ku / Tel: 082-546-1158 / URL: <http://www.johakyu.co.jp/>]

From December 28 **Bohemian Rhapsody** / '18 UK, USA
 From February 15 **The Favourite** / '18 Ireland, USA, UK
 From March 22 **On the Basis of Sex** / '18 USA

YOKOGAWA CINEMA Tel : 231-1001

[3-1-12 Yokogawa-cho, Nishi-ku / Tel: 082-231-1001 / URL: <http://yokogawa-cine.jugem.jp/>]

March 1 – 15 **Victoria & Abdul** / '17 UK, USA
 March 1 – 7 **Strategia del Rango** / '69 Italy
 March 8 – 14 **Robocop** / '87 USA
 March 9 – 14 **The Man Who Stole Banksy** / '18 UK, Italy

AEON CINEMA HIROSHIMA

[Hiroshima Danbara Shopping Center 6F, 1-3-52 Danbara-minami, Minami-ku / Tel : 082-261-3770 / URL: <https://www.aeoncinema.com/cinema/hiroshima/>]

From November 9 **Bohemian Rhapsody** / '18 UK, USA
 From February 8 **First Man** / '18 USA
 From February 8 **Aquaman** / '18 USA
 From February 22 **Alita: Battle of Angel** / '18 USA
 From March 15 **Captain Marvel** / '19 USA

From March 22 **Bumblebee** / '18 USA
 From March 29 **Dumbo** / '19 USA

109 CINEMAS

[Alpark 3F (north bldg.), 4-7-1 Kusatsu-minami, Nishi-ku / Tel: 05700-002-109 / URL: <https://www.109cinemas.net/hiroshima/>]

From November 9 **Bohemian Rhapsody** / '18 UK, USA
 From February 1 **Marry Poppins Returns** / '18 USA
 From February 8 **First Man** / '18 USA
 From February 8 **Aquaman** / '18 USA
 From February 15 **The Favourite** / '18 Ireland, USA, UK
 From February 22 **Alita: Battle of Angel** / '18 USA
 From March 8 **Spider-Man: Into the Spider-Verse** / '18 USA
 From March 8 **The Mule** / '18 USA
 From March 15 **Captain Marvel** / '19 USA
 From March 22 **Bumblebee** / '18 USA
 From March 29 **Dumbo** / '19 USA

TOHO CINEMAS MIDORII

[Fuji Grand 3F, 1-5-2 Midorii, Asaminami-ku / Tel : 082-831-8060 / URL: <https://www.tohotheater.jp/>]
 Adults-¥1,800, University students-¥1,500, From preschoolers (3 years old and under) to High school students-¥1,000,

From November 9 **Bohemian Rhapsody** / '18 UK, USA
 From February 1 **Marry Poppins Returns** / '18 USA
 From February 8 **First Man** / '18 USA
 From February 22 **Alita: Battle of Angel** / '18 USA
 From March 1 **Mortal Engines** / '18 USA
 From March 1 **Green Book** / '18 USA
 From March 8 **Spider-Man: Into the Spider-Verse** / '18 USA
 From March 8 **The Mule** / '18 USA
 From March 15 **Captain Marvel** / '19 USA
 From March 22 **Bumblebee** / '18 USA
 From March 22 **Blackkklansman** / '18 USA

Please feel free to contact the International Exchange Lounge at 082-247-9715.

E-mail: golounge@pcf.city.hiroshima.jp

March 2019

AEON CINEMA HIROSHIMA SEIFU SHINTO

[THE OUTLETS HIROSHIMA 1F, 4-1-1, Ishiuchi-higashi, Saeki-ku / Tel : 082-941-7070 / URL: <https://www.aeoncinema.com/cinema/seifu/>]

From November 9 **Bohemian Rhapsody / '18 UK, USA**
 From February 8 **First Man / '18 USA**
 From February 8 **Aquaman / '18 USA**
 From February 9 **Reprisal / '18 USA, UK**
 From February 22 **Alita: Battle of Angel / '18 USA**
 From March 1 **Unfriended: Dark Web / '18 USA**
 From March 8 **Spider-Man: Into the Spider-Verse / '18 USA**
 From March 9 **葉問外傳：張天志 / Master Z: Ip Man Legacy / '18 Hong Kong, China**
 From March 15 **Captain Marvel / '19 USA**
 From March 15 **Mary Queen of Scots / '18 UK**
 From March 22 **Bumblebee / '18 USA**
 From March 29 **Dumbo / '19 USA**

HIROSHIMA WALD 11

[AEON Mall Hiroshima Fuchu 4F, 2-1-1 Osu, Fuchu-cho, Aki-gun / Tel : 082-561-0600 / URL: <http://kinezo.jp/pc/wald11>]

From November 9 **Bohemian Rhapsody / '18 UK, USA**
 From February 8 **First Man / '18 USA**
 From February 8 **Aquaman / '18 USA**
 From February 22 **Alita: Battle of Angel / '18 USA**
 From March 1 **Green Book / '18 USA**
 From March 8 **The Mule / '18 USA**
 From March 8 **Spider-Man: Into the Spider-Verse / '18 USA**
 From March 15 **Captain Marvel / '19 USA**
 From March 22 **Bumblebee / '18 USA**
 From March 29 **Dumbo / '19 USA**
 From April 5 **Suspiria / '18 Italy, USA**
 From April 5 **Utoya 22. Juli / Utoya July 22 / '18 Norway**
 From April 5 **Den Skyldige / The Guilty / '18 Denmark**
 From April 12 **Hunter Killer / '18 UK**
 From April 12 **Halloween / '18 USA**
 From April 19 **Shazam! / '19 USA**

◆ Movie Showings at 10 am in the Morning

March 1 – 14 **Dog Day Afternoon / '75 USA**
 March 15 – 28 **All the President's Men / '76 USA**

T-JOY HIGASHI HIROSHIMA

[Fuji Grand Higashi Hiroshima 3F, 4405 Misonou, Saijocho, Higashi Hiroshima-shi / Tel : 082-493-6779 / URL: http://kinezo.jp/pc/t-joy_hiroshima]

From November 9 **Bohemian Rhapsody / '18 UK, USA**
 From February 8 **First Man / '18 USA**
 From February 8 **Aquaman / '18 USA**
 From February 22 **Alita: Battle of Angel / '18 USA**
 From March 8 **The Mule / '18 USA**
 From March 15 **Captain Marvel / '19 USA**
 From March 22 **Bumblebee / '18 USA**
 From March 29 **Dumbo / '19 USA**
 From April 12 **Hunter Killer / '18 UK**
 From April 19 **Shazam! / '19 USA**



Please feel free to contact the International Exchange Lounge at 082-247-9715.

E-mail: golounge@pcf.city.hiroshima.jp

March 2019



Bilingual TV Programs

March 2019

#1: NHK Sogo	#4: Hiroshima TV
#2: NHK E Tele	#5: Home TV
#3: RCC	#8: TSS

◆ Some changes may occur because of special programming.

NEWS

Monday - Sunday

NHK News 7 / 7:00 pm – 7:30 pm (#1)

Monday - Friday

News Watch 9 / 9:00 pm – 10:00 pm (#1)

REGULAR PROGRAMS

Tuesday

Design Talks +plus / 11:00 pm – 11:30 pm (#2) ◆ Rerun: Wednesday, 10:25 am – 10:55 am

Friday

Documentary Programs / 10:00 pm – 10:50 pm (#2)

Saturday

Dramatic Earth (Documentary Program) / 7:00 pm – 7:45 pm (#2)
◆ Rerun: Monday, midnight – 12:45 am

DRAMAS

Monday

iCarly ('07 USA) / 7:25 pm – 7:50 pm (#2)
◆ Until the 25th

Friday

Game Shakers season 2 ('16- USA) / 7:25 pm – 7:50 pm (#2) ◆ Until the 30th

Saturday

The Thundermans 3 ('13- USA) / 6:25 pm – 6:50 pm (#2)

Sunday

オクニヨ ('16 South Korea) / 11:00 pm – midnight (#1)

ANIMATIONS

Saturday

Curious George / 8:35 am – 9:00 am (#2)
SpongeBob SquarePants / 6:00 pm – 6:25 pm (#2)

Sunday

Thomas & Friends / 5:30 pm – 5:50 pm (#2)

MOVIES

9th Inferno / '16 USA / 9:00 pm – 11:30 pm (#8)

10th Ai Weiwei: Never Sorry / '12 USA / 2:08 am – 4:00 am (#3)

16th Sing / '16 USA / 9:00 pm – 11:10 pm (#8)

17th The Good Lie / '14 USA / 2:08 am – 4:10 am (#3)

SPORTS

▣ Baseball ◆ Broadcasted in Japanese only

■ Samurai Japan Series

9th Japan x Mexico / 6:56 pm – 9:54 pm (#5)

10th Japan x Mexico / 7:00 pm – 8:54 pm (#3)

■ 2019 MGM MLB Opening Games (#4)

Pre-season Games

17th Yomiuri Giants x Seattle Mariners / 11:45 am – 3:00 pm

18th Yomiuri Giants x Seattle Mariners / 7:00 pm – 9:00 pm

Opening Games

20th Seattle Mariners x Oakland Athletics / 6:30 pm – 8:54 pm

21st Seattle Mariners x Oakland Athletics / 7:00 pm – 8:54 pm

▣ 2019 March Grand Sumo Tournament (#1)

March 10 – 24

10th 3:05 pm – 6:00 pm

11th 4:05 pm – 6:00 pm

12th – 15th 3:08 pm – 6:00 pm

16th & 17th 3:05 pm – 6:00 pm

18th – 20th 3:08 pm – 6:00 pm

21st 3:05 pm – 6:00 pm

22nd 3:08 pm – 6:00 pm

23rd 4:00 pm – 6:00 pm

24th 3:05 pm – 6:00 pm

▣ Figure Skating: ISU World Figure Skating Championships 2019 (#8)

◆ Broadcasted in Japanese only

20th 6:30 pm – 8:54 pm

21st 6:30 pm – 8:54 pm

22nd 6:30 pm – 9:55 pm

23rd 6:30 pm – 9:30 pm

▣ Soccer: KIRIN Challenge Cup 2019

◆ Broadcasted in Japanese only

22nd Japan x Colombia / 7:20 pm – 9:24 pm (#4)

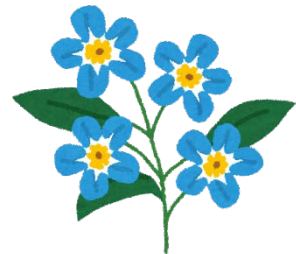
26th Japan x Bolivia / 7:00 pm – 9:30 pm (#8)

Please feel free to contact to the International Exchange Lounge at 082-247-9715.

E-Mail: golounge@pcf.city.hiroshima.jp

March 2019

Concerts & Plays



Ticket Offices

- ① EDION Play Guide (SUNMALL, 1F) (Kamiya-cho, Naka-ku; Tel. 247-5111)
- ② YAMAHA Music (Kamiya-cho, Naka-ku; Tel. 244-3779 Closed on the 1st & the 3rd Wednesdays)
- ③ Hiroshima Yume Plaza (Hondori, Naka-ku; Tel. 544-1122 Closed on Wednesdays)
- ④ Kawai Hiroshima (2-2-6 Kamiya-cho, Naka-ku; Tel. 243-9291 Closed on Mondays)
- ⑤ Fukuya Department Store, Hatchobori (7F) (Ebisu-cho, Naka-ku; Tel. 246-6111)
- ⑥ Fukuya Department Store, Hiroshima Station (7F) (Matsubara-cho, Minami-ku; Tel. 568-3111)
- ⑦ Alpark Tenmaya (3F) (Inokuchi-myojin, Nishi-ku; Tel. 501-1111)
- ⑧ Hiroshima Arts Gakki (Hatchoboru, Naka-ku; Tel. 227-6601)

Date / Starting Time (Opening Time) / Venue / Ticket Price / Tickets Go on Sale Date / Ticket Offices / Inquiries

♪ Event schedules are subject to change.

Please contact the event office before you go. ♪

March

★ Hitomi Yoshida Pipe Organ Concert 2019

3rd Sunday / 2:00 pm (1:30 pm) / Elisabeth University of Music, Cecilia Hall / Advance: Adults-¥2,500 Students-¥1,500; At the door: Adults-¥3,000 Students-¥2,000 / Now on sale / ①④⑦ / 090-2291-3561 (Yoshida)

★ Hiroshima Symphony Orchestra: The 388th Subscription Concert

(Dvořák: *Othello, Overture, op 93*; Tchaikovsky: *Violin Concerto in D major, op. 35*; Smetana (orch. George Szell): *String Quartet No. 1 in E minor "From My Life"*)
3rd Sunday / 3:00 pm (2:00 pm) / Hiroshima Bunka Gakuen HBG Hall / S-¥5,200 A-¥4,700 B-¥4,200 Students (B seats)-¥1,500 (Student tickets are only sold at the Hiroshima Symphony Orchestra Office.) / Now on sale / ①②⑤⑥⑦⑧, Lawson, Ticket PIA, Chugoku Shimbun & Hiroshima Symphony Orchestra Office / Hiroshima Symphony Orchestra Office 082-532-3080 (weekdays, 9 am – 5:20 pm) E-mail: info@hirokyo.or.jp
♪ Conductor: Charles Olivieri-Munroe / Violin: Naoka Aoki

★ Ryuji Kunimatsu Solo Concert 2018-2019

3rd Sunday / 3:00 pm (2:30 pm) / Hiroshima Ushita Church / Advance: Adults-¥3,000 Students-¥2,000; At the door: Adults-¥3,500 Students-¥2,500 / Ticket reservations & inquiries: 082-222-7727 or Pasion Musical 0774-45-4645 E-mail: pasionmusical@hotmail.com
♪ Classical guitar concert

★ So (traditional Japanese harp), Sangen (traditional Japanese guitar) & Shakuhachi (traditional Japanese bamboo flute) Concert

3rd Sunday / 3:00 pm (2:30 pm) / Hiroshima City Ryugakusei Kaikan / Adults-2,000 University students-¥1,000 High school students and under & foreign nationals-Free / Now on sale / ① / 090-1014-0806, E-mail: tutaeyae@enjoy.ne.jp

★ Ryo Kojima (violin) & Wataru Hisaue (piano) Duo Recital 2019

3rd Sunday / 6:00 pm (5:30 pm) / JMS Aster Plaza / Advance: Adults-¥3,000 Students-¥1,500; At the door: Adults-¥3,500 Students-¥2,000 (all non-reserved seats) / Now on sale / ①, Ticket PIA / Executive Committee 080-1944-2388, E-mail: tomokist@siren.ocn.ne.jp

★ Great Teacher Concert Vol. 4

5th Tuesday / 7:00 pm (6:30 pm) / Higashi Kumin Bunka Center / ¥2,000 / Now on sale / ⑧ / 090-9733-6674 (Mishima)

♪ This is a trumpet ensemble concert.

★ Piano Concert by Kazumasa Matsumoto & His Students

8th Friday / 6:30 pm (6:00 pm) / Minami Kumin Bunka Center / Advance: Adults-¥2,000 Students-¥1,500; At the door: Adults-¥2,500 Students-¥2,000 (all non-reserved seats) / Now on sale / ④ / 090-1251-7635 (Asada)

NEW!!

NEW!!

Please feel free to contact the International Exchange Lounge at 082-247-9715.

E-mail: golounge@pcf.city.hiroshima.jp

March 2019

★ **Piano, Flute & Trumpet Concert**

NEW!!

9th Saturday / 2:00 pm – 3:00 pm / Goujinsha
Wendy Hito Machi Plaza / Free admission / Hito
Machi Plaza 082-545-3911

★ **Vocal Joint Concert**

9th Saturday / 6:30 pm (6:00 pm) / Higashi Kumin
Bunka Center / ¥1,000 (all non-reserved seats) /
Please ask the concert organizer for ticket
information. / E-mail: c5.1217.725.moll@gmail.com
(Okada)

★ **Fana Early Music Concert: Membra Jesu
Nostri (by Dieterich Buxtehude)**

10th Sunday / 5:00 pm (4:30 pm) / Hiroshima
Nagarekawa Church / Advance: Adults-¥2,000
Students-¥1,000; At the door: Adults-¥2,500
Students-¥1,500 / Please ask the concert organizer
for ticket information. / 082-274-3859 (Nakano), E-
mail: tajitaji_1226@yahoo.co.jp (Tajiri)

★ **Claire Clarinet Solo and Ensemble Concert**

11th Monday / 6:30 pm (6:00 pm) / JMS Aster Plaza
/ ¥500 / Please ask the concert organizer for ticket
information. / 080-8242-1307 (Shimizu)

★ **Shichinosuke Nakamura Special Japanese
Classical Dance Performance 2019**

12th Tuesday / ① 1:00 pm (12:30 pm) ② 6:30 pm
(6:00 pm) / JMS Aster Plaza / S-¥6,500 A-¥5,000
/ Now on sale / Lawson, Ticket PIA, e+, Seven-
Eleven, ①⑥ / TSS 082-253-1010

NEW!!

★ **The 26th Hiroshima Tafel Orchestra Concert**

16th Saturday / 6:30 pm (6:00 pm) / Nishi Kumin
Bunka Center / Free admission / 082-272-8656
(Wakinaka); E-mail: akubi@mx41.tiki.ne.jp

★ **Ganso Heisei Wind Orchestra:
The 27th Spring Concert**

17th Sunday / 2:00 pm (1:00 pm) / Hiroshima Bunka
Gakuen HBG Hall / Free admission / Ganso Heisei
Wind Orchestra 090-8060-8775 (Ueno), E-mail:
ganso126@norue.jp

★ **The 38th TOSHIBA Grand Concert 2019:
Danish National Symphony Orchestra
conducted by Fabio Luisi**

(Nielsen: "Maskarade" Overture; Beethoven: Piano
Concerto No. 5 in E-flat major, Op. 73 "Emperor";
Tchaikovsky: Symphony No. 5 in E minor, Op. 64)
17th Sunday / 4:00 pm (3:30 pm) / Ueno Gakuen
Hall / S-¥12,000 A-¥9,000 B-¥8,000 C-
¥6,000 Students-¥4,000 ✧ Student ID will be
required on the concert day. / Now on sale /
①⑥⑦, Lawson, Seven-Eleven, Ticket PIA / TSS

Event Office 082-253-1010 (weekdays, 10 am – 6
pm) 🎹 Piano: Yukio Yokoyama

★ **Calefax Reed Quintet Amsterdam**

19th Tuesday / 6:30 pm (6:00 pm) / Hiroshima
KenminBunka Center / Adults-¥2,990 High
school students and under-¥1,500 / Now on sale /
①⑥, Ticket PIA / Hiroshima Vienna Club 082-
241-8868
🎹 Guests: Toshimitsu Kamigaichi (guitar) & Yukiko
Ishihara (marimba)

★ **Studio Ghibli Concert by Dream Chamber
Orchestra**

23rd Saturday / 2:00 pm (1:30 pm) / Ueno Gakuen
Hall / Junior high school students and above-¥4,000
3 years old – elementary school students-¥2,800 /
Now on sale / Lawson, Ticket PIA, e+, ① /
Hiroshima TV Event Information Center 082-
567-2500 (weekdays, 10 am – 6 pm)

★ **Masaya Yamashita Saxophone Recital**

23rd Saturday / 2:00 pm (1:30 pm) / Aki Kumin
Bunka Center / Advance: Adults-¥2,000 High
school students and under-¥1,000; At the door:
Adults-¥2,500 High school students and under-
¥1,500 / Now on sale / JMS Aster Plaza, Kumin
Bunka Centers / Aki Kumin Bunka Center 082-
824-1330 (closed on Mondays)

★ **The 19th Marimba Concert**

24th Sunday / 1:00 pm (12:30 pm) / Hiroshima
Kenmin Bunka Center / Free admission / 080-1903-
6067 (Inoue)

★ **Little Wiids Brass Ensemble:
The 37th Regular Concert**

NEW!!

25th Monday / 6:30 pm (6:00 pm) / Hiroshima
Bunka Gakuen HBG Hall / Adults-¥1,500 High
school students and under-¥800 / Now on sale / ⑧
/ 082-238-4898 (Kobayashi)

★ **Masaki Ueno: An Evening of Mozart**

NEW!!

28th Thursday / 6:30 pm / Higashi Kumin Bunka
Center / Adults-¥3,000 Students-¥2,000 / Please
ask the concert organizer for ticket information. /
090-5168-2848 (Ueno)
🎻 Violin concert

★ **Ringo Starr and His All Star Band**

29th Friday / 7:00 pm (6:30 pm) / Ueno Gakuen
Hall / S-¥16,000 A-¥15,000 / Now on sale /
Lawson, Ticket PIA, e+, ① / Yumebanchi
Hiroshima 082-249-3571 (weekdays, 11 am – 7 pm)

Please feel free to contact the International Exchange Lounge at 082-247-9715.

E-mail: golounge@pcf.city.hiroshima.jp

March 2019

★ **Kammerchor “Hiroshima Kantorei”:
The 5th Regular Concert**
30th Saturday / 6:00 pm (5:30 pm) / Elisabeth
University of Music, Cecilia Hall / ¥1,000 (all non-
reserved seats) / Now on sale / ① / 090-2197-4794
(Kawabata), E-mail: hiroshimakantorei.2014@
gmail.com

April

★ **Kotaro Oshio Concert Tour 2019
“Encounter”**
5th Friday / 6:30 pm (6:00 pm) / Hiroshima Club
Quattro / ¥6,000 / Now on sale / e+, Ticket PIA,
Lawson / Yumebanchi Hiroshima 082-249-3571
(weekdays, 11 am – 7 pm)
♪ Guitar concert

★ **Ensemble “Hibiki”: the 10th Concert** NEW!!
5th Friday / 6:45 pm (6:15 pm) / JMS Aster Plaza /
Adults-¥3,000 Students-¥1,000 (all non-reserved
seats) / Now on sale / ①, JMS Aster Plaza /
Executive Committee 090-9818-3849 (Kumazawa);
E-mail: ens.hibiki@gmail.com

★ **Shinya Kiyozuka Piano Recital 2019**
6th Saturday / 2:00 pm (1:30 pm) / International
Conference Center Hiroshima, Phoenix Hall /
Adults-¥4,800 Students-¥2,000 ✧ Student seat
number will be designated on the concert day. /
Now on sale / ①⑥⑦, Ticket PIA, Lawson, Seven-
Eleven, e+ / HOME Event Center 082-221-7116
(weekdays, 10 am – 5 pm)

★ **Canthana Live in Hiroshima** NEW!!
9th Tuesday / 7:00 pm (6:30 pm) / JMS Aster Plaza /
Adults-¥3,000 Students-¥2,000 / Ticket
information & inquiries: 082-577-8114; E-mail:
ocm@myuche.site
♪ Canthana is a rock band consisting of three cellists.

★ **Hiroshima Symphony Orchestra:
The 389th Subscription Concert** NEW!!
*(Beethoven: Violin Concerto in D major Op. 61; Brahms:
Symphony No. 2 in D major Op. 73)*
14th Sunday / 3:00 pm (2:00 pm) / Hiroshima Bunka
Gakuen HBG Hall / S-¥5,200 A-¥4,700 B-
¥4,200 Students (B seats)-¥1,500 (Student tickets
are only sold at the Hiroshima Symphony Orchestra
Office.) / Now on sale / ①②⑤⑥⑦⑧, Lawson,
Ticket PIA, Chugoku Shimbun & Hiroshima
Symphony Orchestra Office / Hiroshima
Symphony Orchestra Office 082-532-3080
(weekdays, 9 am – 5:20 pm) E-
mail: info@hirokyo.or.jp
♪ Conductor: Leopold Hager / Violin: Vilde Frang

★ **Masayuki Hirahara Piano Concert** NEW!!
14th Sunday / 3:00 pm (2:30 pm) / Blue Live
Hiroshima / Adults-¥5,500 Students-¥2,500 /
Now on sale / Blue Live Ticket Center, Ticket PIA /
Blue Live Hiroshima 082-250-5522

★ **Sarah Brightman in Concert**
19th Friday / 7:00 pm (6:30 pm) / Hiroshima Bunka
Gakuen HBG Hall / S-¥16,000 A-¥15,000 B-
¥14,000 / Now on sale / Lawson, Ticket PIA, e+
①⑥ / HOME Event Center 082-221-7116
(weekdays, 10 am – 5 pm) or Yumebanchi
Hiroshima 082-249-3571 (weekdays, 11 am – 7
pm)

★ **Gion Wind Ensemble:
The 33rd Regular Concert** NEW!!
21st Sunday / 2:00 pm (1:30 pm) / Asaminami
Kumin Bunka Center / ¥500 / Now on sale / ⑧ /
Gion Wind Ensemble 090-9737-3137 (Mashino);
E-mail: gionwind3198@icloud.com

★ **Hiroshima Symphony Orchestra:
The 22nd Regular Concert in Hatsukaichi**
21st Sunday / 3:00 pm (2:30 pm) / Hatsukaichi
Bunka Hall Sakurapia / S-¥3,700 A-¥3,200 B-
¥2,700 Students (25 years old and under; B seats)-
¥1,500 (Student tickets are only sold at Sakurapia and
the Hiroshima Symphony Orchestra Office. Student
ID will be required on the concert day.) / Now on
sale / Ticket PIA, Lawson, Sakurapia, Chugoku
Shimbun / Hatukaichi Bunak Hall Sakurapia 0829-
20-0111 ♪ Conductor: Tatsuya Shimono
Piano: Manami Kobayashi

★ **Taro Hakase, Chisako Takashima & Iwao
Furusawa: Three Violinists Concert**
27th Saturday / 5:00 pm (4:30 pm) / Hiroshima
Bunka Gakuen HBG Hall / ¥8,800 / From
Saturday, March 9 / Lawson, Ticket PIA, e+ /
Candy Promotion Hiroshima 082-249-8334

May

★ **Fuzjko Hemming (piano) & Hiroshima
Symphony Orchestra** NEW!!
1st Wednesday / 3:00 pm (2:15 pm) / Hiroshima
Bunka Gakuen HBG Hall / Advance: SS-¥10,000
S-¥9,000 A-¥8,000; At the door: SS-¥10,500 S-
¥9,500 A-¥8,500 / Now on sale / Lawson, Ticket
PIA, Seven-Eleven, ①⑥ / RCC 082-222-1133
(weekdays, 9:30 am – 5:30 pm)

Please feel free to contact the International Exchange Lounge at 082-247-9715.

E-mail: golounge@pcf.city.hiroshima.jp

March 2019

NEW!!

★ **Mandolin Ensemble Regina:
The 9th Concert**

NEW!!

4th Saturday / 1:30 pm (1:00 pm) / Higashi Kumin
Bunka Center / Free admission / 090-3174-4305
(Yasui)

★ **Hiroshima Opera Ensemble:
The Turn of the Screw**

NEW!!

① 11th Saturday ② 12th Sunday / ① the 11th: 6:00
pm (5:15 pm) ② the 12th: 2:00 pm (1:15 pm) /
JMS Aster Plaza / Advance: Adults-¥6,000 High
school students and under-¥3,000; At the door:
Adults-¥6,500 High school students and under-
¥3,500 / Now on sale / ①②③④⑤⑥⑦⑧, JMS Aster Plaza,
Ticket PIA / Hiroshima Opera Ensemble Office
090-3630-1561 or 082-294-6144; E-mail: m.kohno4-
9@tune.ocn.ne.jp

♪ This will be played in original language with Japanese
subtitles.

★ **Hiroshima Symphony Orchestra:
Bouquet of Music HSO Masterpiece Concert
~ Spring ~**

NEW!!

(Weber: *Der Freischutz*, J. 277 Overture; Mendelssohn:
Violin Concerto in E minor Op. 64; Dvořák: *Symphony
No. 7 in D minor Op. 70*)

12th Sunday / 3:00 pm (2:00 pm) / International
Conference Center Hiroshima, Phoenix Hall / S-
¥4,200 Pair tickets (S seats)-¥6,400 A-¥3,200
B-¥2,200 Students (B seats)-¥1,500 (Student
tickets are only sold at the Hiroshima Symphony
Orchestra Office.) / From Monday, March 4 /
①②③④⑤⑥⑦⑧, Lawson, Ticket PIA, Chugoku
Shimbun & Hiroshima Symphony Orchestra Office
/ Hiroshima Symphony Orchestra Office 082-532-
3080 (weekdays, 9 am – 5:20 pm) E-
mail: info@hirokyo.or.jp

♪ Conductor: Yasuhiko Shiozawa / Violin: Ririko Takagi

★ **Boz Scaggs: out of the blues tour**

13th Monday / 7:00 pm (6:30 pm) / JMS Aster Plaza
/ S-¥13,000 A-¥12,000 / Now on sale / Lawson,
Ticket PIA, e+, ① / Yumebanchi Hiroshima 082-
249-3571 (weekdays, 11 am – 7 pm)

NEW!!

★ **Flute Quartet, Bacc-Quar Concert Vol. 9**

16th Thursday / 6:45 pm (6:15 pm) / Higashi Kumin
Bunka Center / Advance: Adults-¥2,000 High
school students and under-¥1,000; At the door:
Adults-¥2,500 High school students and under-
¥1,500 / Please ask the concert organizer for ticket
information. / 090-9464-3840 (Neishi); E-mail:
baccquar@gmail.com

★ **Hiroshima Symphony Orchestra, Discovery
Series: Hosokawa x Beethoven**

(Beethoven: *Fidelio*, Op. 72b Overture; Toshio
Hosokawa: "Cloud and Light" for Shô and Orchestra;
Beethoven: *Symphony No. 1 in C major Op. 21*)

17th Friday / 6:45 pm (5:45 pm) / JMS Aster Plaza /
S-¥5,200 A-¥4,200 B- ¥3,200 Students (B
seats)-¥1,000 (Student tickets are only sold at the
Hiroshima Symphony Orchestra Office.) / From
Sunday, March 17 (from Monday, March 18 at the
Hiroshima Symphony Orchestra Office) /
①②③④⑤⑥⑦⑧, Lawson, Ticket PIA, Chugoku
Shimbun, JMS Aster Plaza & Hiroshima Symphony
Orchestra Office / Hiroshima Symphony Orchestra
Office 082-532-3080 (weekdays, 9 am – 5:20 pm)
E-mail: info@hirokyo.or.jp

♪ Conductor: Tatsuya Shimono / Shô: Mayumi Miyata

★ **Hiroshima Symphony Orchestra:
The 390th Subscription Concert**

NEW!!

(Bruckner: *Symphony No. 5 in B-flat major WAB. 105
(original version)*)

24th Friday / 6:45 pm (5:45 pm) / Hiroshima Bunka
Gakuen HBG Hall / S-¥5,200 A-¥4,700 B-
¥4,200 Students (B seats)-¥1,500 (Student tickets
are only sold at the Hiroshima Symphony Orchestra
Office.) / From Sunday, March 24 (from Monday,
March 25 at the Hiroshima Symphony Orchestra
Office) / ①②③④⑤⑥⑦⑧, Lawson, Ticket PIA,
Chugoku Shimbun & Hiroshima Symphony
Orchestra Office / Hiroshima Symphony Orchestra
Office 082-532-3080 (weekdays, 9 am – 5:20 pm)
E-mail: info@hirokyo.or.jp

♪ Conductor: Tatsuya Shimono

★ **Black Earth: Burning Bridges
20th Anniversary Japan Tour**

27th Monday / 7:00 pm (6:00 pm) / Hiroshima Club
Quattro / Adults-¥8,000 Students-¥4,000
(Students ID will be required on the concert day.
Student tickets are sold at Lawson, Ticket PIA and
e+. only.) / Now on sale / e+, Ticket PIA, Lawson,
①, Tower Records Hiroshima / Hiroshima Club
Quattro 082-542-2280

June

★ **Niko (erhu) Ensemble Concert**

NEW!!

1st Saturday / 1:30 pm (1:00 pm) / Hiroshima
Kenmin Bunka Center / ¥999 (all non-reserved
seats) / Now on sale / Niko Ongakuin / Executive
Committee 082-222-8449; E-mail: nikoongakuin@
niko-jiang.com

♪ *Niko* is a traditional Chinese guitar

Please feel free to contact the International Exchange Lounge at 082-247-9715.

E-mail: golounge@pcf.city.hiroshima.jp

March 2019

NEW!!

★ **Tokyo Ska Paradise Orchestra: the 30th Anniversary Tour “Traveling Ska JAMboree”**
6th Thursday & 7th Friday / 7:00 pm (6:00 pm) / Hiroshima Club Quattro / ¥5,900 / From Saturday, March 30 / Lawson, Ticket PIA, e+ / Candy Promotion Hiroshima 082-249-8334

★ **Hiroshima Symphony Orchestra: The 391st Subscription Concert** NEW!!
(*Stenhammar: Symphonic Overture “Excelsior!” Op. 13; Grieg: Piano Concerto in A minor Op. 16; Nielsen: Symphony No. 4 Op. 29 (FS. 76) “The Inextinguishable”*)
8th Saturday / 3:00 pm (2:00 pm) / Hiroshima Bunka Gakuen HBG Hall / S-¥5,200 A-¥4,700 B-¥4,200 Students (B seats)-¥1,500 (Student tickets are only sold at the Hiroshima Symphony Orchestra Office.) / From Monday, April 8 / ①②⑤⑥⑦⑧, Lawson, Ticket PIA, Chugoku Shimbun & Hiroshima Symphony Orchestra Office / Hiroshima Symphony Orchestra Office 082-532-3080 (weekdays, 9 am – 5:20 pm) E-mail: info@hirokyo.or.jp
♪ Conductor: Jiří Rožek / Piano Shio Okui

★ **Only Chamber Music: Ensemble Concert Series Season 17: Via Romanica** NEW!!
16th Sunday / 3:00 pm (2:30 pm) / JMS Aster Plaza / Adults-¥3,000 Students-¥2,000 / Please ask the concert organizer for ticket information. / Only Chamber Music Office 082-577-8114

★ **Hiroshima Symphony Orchestra: Music for Peace Concert in Hiroshima** NEW!!
(*Penderecki: Prelude for Peace; Penderecki: Violin Concerto No. 2 “Metamorphosen”; Beethoven: Symphony No. 8 in F major Op. 93*)
20th Thursday / 6:45 pm (5:45 pm) / Hiroshima Bunka Gakuen HBG Hall / S-¥5,000 A-¥4,000 Students (A seats)-¥2,000 (Student tickets are only sold at the Hiroshima Symphony Orchestra Office.) / Now on sale / ①②⑤⑥⑦⑧, Lawson, Ticket PIA, Chugoku Shimbun & Hiroshima Symphony Orchestra Office / Hiroshima Symphony Orchestra Office 082-532-3080 (weekdays, 9 am – 5:20 pm) E-mail: info@hirokyo.or.jp
♪ Conductor: Krzysztof Penderecki / Violin: Sayaka Shoji

★ **Drum TAO 2019 – The Drummers** NEW!!
26th Wednesday / 7:00 pm (6:30 pm) / JMS Aster Plaza / SS-¥7,000 S-¥6,000 A-¥5,000 / From Saturday, March 2 / Lawson, Ticket PIA, e+, ① / TSS Office 082-253-1010 (weekdays, 10 am – 6 pm); Candy Promotion Hiroshima 082-249-8334 (weekdays, 11 am – 6:30 pm)

NEW!!

★ **Berliner Barock Solisten with Daishin Kashimoto (violin) & Jonathan Kelly (oboe)**
28th Friday / 6:45 pm (6:15 pm) / Ueno Gakuen Hall / GS-¥10,000 S-¥8,000 A-¥7,000 B-¥6,000 C-¥5,000 / From Saturday, March 16 / Lawson, Ticket PIA, ①⑥ / RCC 082-222-1133 (weekdays, 10 am – 5 pm)

★ **Live Green 2019** NEW!!
30th Sunday / 1:30 pm – 5:30 pm (12:30 pm) / Honganji Temple Hiroshima Betsuin / Advance-¥3500 At the door-¥4,000 (all non-reserved seats)
◇ Free admission for one child (elementary school student and under) with his/her guardian (¥500 for each extra child) / From Friday, March 1 / Ticket PIA, Seven-Eleven, Lawson, ①⑥, Stereo Records / RCC 082-222-1133 (weekdays, 10 am – 5 pm)
♪ Live Act: Kazumi Nikaido, Hanaregumi with U-zhaan
This is a music event held at a temple. A talk show, workshops, cafés & a marché (food market) will also be held. This is a rain-or-shine event.

July

NEW!!

★ **Konzerthausorchester Berlin conducted by Elisha Inbal Piano: Alice Sara Ott**
4th Thursday / 6:30 pm / Hiroshima Bunka Gakuen HBG Hall / S-¥13,500 A-¥11,500 B-¥8,500 C-¥6,500 / Now on sale / ①, e+, Ticket PIA, Lawson / Hiroshima TV Event Information Center 082-567-2500 (weekdays, 10 am – 6 pm)

★ **God Save the Queen Japan Tour 2019**
7th Sunday / 5:00 pm (4:15 pm) / Blue Live Hiroshima / Now on sale / ①⑥, Lawson, Ticket PIA, S / HOME Event Center 082-221-7116 (weekdays, 10 am – 5 pm)

SOLD OUT

★ **Hiroshima Symphony Orchestra: The 392nd Subscription Concert** NEW!!
(*Fauré: Pelléas et Mélisande, Suite Op. 80; Ravel: Tzigane; Saint-Saëns: Introduction et Rondo Capriccioso Op. 28; Florent Schmitt: La Tragédie de Salomé, Op. 50*)
12th Friday / 6:45 pm (5:45 pm) / Hiroshima Bunka Gakuen HBG Hall / S-¥5,200 A-¥4,700 B-¥4,200 Students (B seats)-¥1,500 (Student tickets are only sold at the Hiroshima Symphony Orchestra Office.) / From Sunday, May 12 (from Monday, May 13 at the Hiroshima Symphony Orchestra Office) / ①②⑤⑥⑦⑧, Lawson, Ticket PIA, Chugoku Shimbun & Hiroshima Symphony Orchestra Office / Hiroshima Symphony Orchestra Office 082-532-3080 (weekdays, 9 am – 5:20 pm) E-mail: info@hirokyo.or.jp
♪ Conductor: Kazuyoshi Akiyama
Violin: Arabella Miho Steinbacher

Please feel free to contact the International Exchange Lounge at 082-247-9715.

E-mail: golounge@pcf.city.hiroshima.jp

March 2019

August

★ “*Dai-ku*”

NEW!!

1st Thursday / 6:45 pm (6:00 pm) / Hiroshima
 Bunka Gakuen HBG Hall / Advance: S-¥15,000
 A-¥10,000; At the door: S-¥18,000 A-¥13,000 /
 Now on sale / ①, Lawson, Ticket PIA / Hiroshima
 TV Event Information Center 082-567-2500
 (weekdays, 10 am – 6 pm)

♪ “*Dai-ku*” is Symphony No. 9 in D minor Op. 125
 “Choral” composed by Beethoven. It is usually called
 “*Dai-ku*” in Japanese.

Performers:

Conductor: Kazushi Ono / Guest: Yoshida Kyodai
 (shamisen, traditional Japanese guitar) / Soprano:
 Jennifer Wilson / Alto: Etsuko Kano / Tenor: David
 Pomeroy / Baritone: Hidekazu Tsumaya / Orchestra:
 Barcelona Symphony Orchestra – the National
 Orchestra of Catalonia – / Choir: Tokyo Opera Singers

★ Hiroshima Symphony Orchestra: An Evening of Peace Concert

NEW!!

(*Toshio Hosokawa: Lied V, for Violoncello and Orchestra*
(World Premiere); Shostakovich: Violoncello Concerto
No. 1 in E-flat major Op. 107; Mahler: Symphony No. 1 in
D major “Titan”)

5th Monday / 6:45 pm (5:45 pm) / Hiroshima Bunka
 Gakuen HBG Hall / S-¥5,000 A-¥4,000
 Students (A seats)-¥2,000 (Student tickets are only
 sold at the Hiroshima Symphony Orchestra Office.) /
 From Wednesday, June 5 / ①②③④⑤⑥⑦⑧, Lawson,
 Ticket PIA, Chugoku Shimbun & Hiroshima
 Symphony Orchestra Office / Hiroshima
 Symphony Orchestra Office 082-532-3080
 (weekdays, 9 am – 5:20 pm) E-

mail: info@hirokyo.or.jp

♪ Conductor: Christian Arming / Violoncello: Steven Isserlis /
 Horn: Javier Bonet



Please feel free to contact the International Exchange Lounge at 082-247-9715.

E-mail: golounge@pcf.city.hiroshima.jp

March 2019

Event Halls

- ◆ **Hiroshima Bunka Gakuen HBG Hall 広島文化学園 HBG ホール**
(3-3 Kako-machi, Naka-ku, Hiroshima Tel. 082-243-8881)
▶ Take the No.24 bus bound for Yoshijima Eigyocho (吉島営業所) and get off at Kako-machi (加古町). 2 minutes' walk from there.
- ◆ **Hiroshima Kenmin Bunka Center 広島県民文化センター**
(1-5-3 Ote-machi, Naka-ku, Hiroshima Tel. 082-245-2311)
▶ 5 minutes' walk from Hondori (本通) or Kamiya-cho-nishi (紙屋町西) streetcar stop.
- ◆ **JMS Aster Plaza JMS アステールプラザ**
(4-17 Kako-machi, Naka-ku, Hiroshima Tel. 082-244-8000)
▶ Take the No.24 bus bound for Yoshijima Eigyocho (吉島営業所) and get off at Kako-machi (加古町). 2 minutes' walk from there.
- ◆ **Ueno Gakuen Hall 上野学園ホール**
(19-1 Hakushima-kita-machi, Naka-ku, Hiroshima Tel. 082-223-6367)
▶ 3 minutes' walk from Astramline Hakushima (白島) Station.
- ◆ **Hiroshima Kokusai Kaigijo (International Conference Center Hiroshima), Phoenix Hall 広島国際会議場フェニックスホール**
(1-5 Nakajima-cho, Naka-ku, Hiroshima Tel. 082-242-7777)
▶ Get on a Hiroshima Bus bound for Yoshijima and get off at Heiwa Kinenkoen (平和記念公園).
▶ 5 minutes' walk from Chuden-mae (中電前) or Genbaku Dome-mae (原爆ドーム前) Streetcar Stop.
- ◆ **Hiroshima Club Quattro 広島クラブクアトロ**
(10-1 Hondori, Naka-ku, Hiroshima (Hiroshima PARCO Hon-kan 10F) Tel. 082-542-2280)
▶ 5 minutes' walk from Hatchobori (八丁堀) Streetcar Stop.
- ◆ **Hiroshima Green Arena 広島グリーンアリーナ**
(4-1 Moto-machi, Naka-ku, Hiroshima Tel. 082-228-1111)
▶ 5 minutes' walk from Kamiya-cho-nishi (紙屋町西) or Kamiya-cho-higashi (紙屋町東) Streetcar Stop.
- ◆ **Hiroshima Sun Plaza 広島サンプラザ**
(3-1-1 Shoko Center, Nishi-ku, Hiroshima Tel. 082-278-5000)
▶ Take a train or streetcar to Miyajima and get off at JR Shin-inokuchi (新井口) Station (JR Sanyo Line) or Shoko Center-iriguchi (商エセンター入り口) streetcar stop (Hiroden Miyajima Line). 5 minutes' walk from there.
- ◆ **Elisabeth University of Music エリザベト音楽大学**
(4-15 Nobori-machi, Naka-ku, Hiroshima Tel. 082-221-0918)
▶ 10 minutes' walk from Kanayama-cho (銀山町) or Jogakuin-mae (女学院前) streetcar stop.
- ◆ **Higashi Kumin Bunka Center 東区民文化センター**
(10-31 Higashi-kaniya-cho, Higashi-ku, Hiroshima Tel. 082-264-5551)
▶ 10 minutes' walk from the Shinkansen Exit of the JR Hiroshima (広島) Station.
- ◆ **Nishi Kumin Bunka Center 西区民文化センター**
(6-1 Yokogawa Shin-machi, Nishi-ku, Hiroshima Tel. 082-234-1960)
▶ 5 minutes' walk from JR Yokogawa (横川) Station.

Please feel free to contact the International Exchange Lounge at 082-247-9715.

E-mail: golounge@pcf.city.hiroshima.jp

March 2019

◆ **Asaminami Kumin Bunka Center 安佐南区民文化センター**

(22-17 Nakasuji 1-chome, Asaminami-ku, Hiroshima Tel. 082-879-3060)

▶ 5 minutes' walk from *Astramline* Nakasuji (中筋) Station.

◆ **Saeki Kumin Bunka Center 佐伯区民文化センター**

(6-1-10 Itsukaichi-chuo, Saeki-ku, Hiroshima Tel. 082-921-7550)

▶ From Hiroshima Bus Center (*Sogo* Hiroshima, 3F), take a bus to Yakushigaoka-danchi (薬師が丘団地), Shikigaoka-danchi (四季が丘団地), Higashi-kannondai-danchi (東観音台団地) or Ajinadai-kita (阿品台北) and get off at Saeki-kumin Bunka Center-mae (佐伯区民文化センター前).

◆ **Aki Kumin Bunka Center 安芸区民文化センター**

(2-16 Funakoshi-minami 3-chome, Aki-ku, Hiroshima Tel. 082-824-1330)

▶ 5 minutes' walk from JR Kaitaichi (海田市) Station (JR Sanyo Line).

◆ **Blue Live Hiroshima ブルーライブ広島**

(3-12-69 Ujina Kaigan, Minami-ku, Hiroshima Tel. 082-250-5522)

▶ Take a streetcar for Hiroshima-ko (No. 1, 3 or 5) and get off at Kaigan-dori (海岸通). 5 minutes' walk from there.

◆ **lifeone221 hall lifeone221 ホール**

(2-2-1 Itsukaichi-chuo, Saeki-ku, Hiroshima-shi Tel.082-922-0028)

▶ Take a bus from JR Itsukaichi (五日市) Station (north exit) and get off at Itsukaichi-chuo 2-chome (五日市中央二丁目). 5 minutes' walk from there.

◆ **Kawai Hiroshima Concert Salon "Pace" カワイ広島コンサートサロン "パーチェ"**

(2-2-6 Kamiya-cho, Naka-ku, Hiroshima Tel. 082-243-9291)

▶ 2 minutes' walk from Hondori (本通) streetcar stop.

◆ **Hiroshima City Ryugakusei Kaikan (International House) 広島市留学生会館**

(1-1 Nishi-kojin-machi, Minami-ku, Hiroshima Tel. 082-568-5931)

▶ 5 minutes' walk from JR Hiroshima Station.

◆ **Hiroshima Nagarekawa Church 広島流川協会**

(8-30 Kami-nobori-cho, Naka-ku, Hiroshima Tel. 082-221-1813)

▶ 5 minutes' walk from Jogakuin-mae (女学院前) or Shukkeien-mae (縮景園前) streetcar stop.

◆ **Hatsukaichi Bunka Hall Sakurapia はつかいち文化ホールさくらぴあ**

(1-11-1 Shimo-hera, Hatsukaichi City Tel. 0829-20-0111)

▶ 8 minutes' walk from Hatsukaichi Shiyakusho-mae (廿日市市役所前) streetcar stop.

◆ **Kure City Bunka Hall 呉市文化ホール** (3-10-1 Chuo, Kure City Tel. 0823-25-7878)

▶ 7 minutes' walk from JR Kure (呉) Station (JR Kure Line).



Please feel free to contact the International Exchange Lounge at 082-247-9715.

E-mail: golounge@pcf.city.hiroshima.jp

March 2019



Museums



A: Adults U: University Students H: High School Students
 J: Junior High School Students E: Elementary School Students
 S: Seniors (65 years old and above - Identification showing your date of birth is required.)

◆ Generally, admission is allowed up to 30 min. prior to closing. ◆

Hiroshima Museum of Art

Address: 3-2 Motomachi, Naka-ku, Hiroshima City

Tel: 082-223-2530

Hours: 9:00 am – 5:00 pm

✧ Open until 7:00 pm on Fridays during special exhibitions

Closed: Mondays (except during special exhibitions)

URL: <http://www.hiroshima-museum.jp>

Special Exhibition

■ Charles-François Daubigny

Period: Until Sunday, March 24

Admission Fee: A -¥1,300, S-¥1,100,

U&H-¥1,000, J&E-¥600

■ Reading Leo Lionni, Again.

Period: Saturday, April 20 – Sunday, June 2

Admission Fee: A -¥1,200 (¥1,000), S-¥1,000,

U&H-¥900 (¥700), J&E-¥500 (¥300)

Collection Exhibition

■ Modern European Paintings

Period: Year-round

Hiroshima City Museum of Contemporary Art

Address: 1-1 Hijiyama Koen, Minami-ku, Hiroshima City

Tel: 082-264-1121

Hours: 10:00 am – 5:00 pm

Closed: Mondays (except national holiday)

URL: <http://www.hcmca.cf.city.hiroshima.jp/>

Special Exhibition

■ 30th Anniversary Exhibition

The Seven Lamps of the Art Museum

Period: Saturday, March 9 – Sunday, May 26

Admission Fee: A-¥1,200 (¥1,000), U-¥900

(¥700), S&H-¥600 (¥500), J & under-Free

✧ Advance ticket prices shown in ().

Collection Exhibition

Admission Fee: A-¥360, U-¥270, S&H-¥170,

J & under- Free

✧ Holders of special exhibition admission tickets are also entitled to view the collection exhibition

Video Art Program (Free admission)

■ A Window to the World [The 63rd Program]:

Marta Krześlak

Period: Until Sunday, March 31

Hiroshima MOCA Monthly Workshop

✧ This is an art program in which the museum selects one particular material and visitors are free to make anything with it. Reservations are not required. You can join the workshop on the event day of.

Event Date: Sunday, March 17

Time: ① 10:00 am – noon

② 2:00 pm – 4:00 pm

Participation Fee: Free

Hiroshima Prefectural Art Museum

Address: 2-22 Kaminobori-cho, Naka-ku, Hiroshima City

Tel: 082-221-6246

Hours: 9:00 am – 5:00 pm

✧ Open until 8:00 pm on Fridays (Apr. – Oct.)

✧ Open until 7:00 pm on Fridays (Nov. – Mar.)

Closed: March 11, 18 & 25

URL: <http://www.hpam.jp/>

Special Exhibitions

■ The 65th Japan Traditional *Kôgei* – Art Crafts - Exhibition

Period: Until Sunday, March 10

Admission Fee: A-¥700, U&H-¥400

J & under-Free

■ UKIYOE that Challenges Kuniyoshi, Yoshitoshi ... and More!

Period: Saturday, April 13 – Sunday, May 26

Admission Fee:

◆ Advance: A-¥1,000, U&H-¥800, J&E-¥400

◆ At the door: A-¥1,200, U&H-¥1,000, J&E-¥600

✧ Advance tickets are sold at the museum, Seven-Eleven, major ticket offices in Hiroshima City until April 12.

Please feel free to contact the International Exchange Lounge at 082-247-9715.

E-mail: golounge@pcf.city.hiroshima.jp

March 2019

Collection Exhibition

Admission Fee (all exhibitions):

A-¥510, U-¥310, H & under-Free

Holders of special exhibition admission tickets are also entitled to view the Museum's Collection exhibits.

■ **New Collections, Donated in 2017: Marcel Duchamp, Kumi Sugai, Culture of the garden**

Period: Until Sunday, April 14

Kure Municipal Museum of Art

Address: Irifuneyama Koen, Saiwai-cho, Kure City

Tel: 0823-25-2007

Hours: 10:00 am – 5:00 pm

Closed: Tuesdays (except national holidays)

URL: <http://kure-bi.jp/>

Collection Exhibition

■ **Local Artists**

Period: Until Sunday, March 24

Admission Fee: A&U-¥300, H-¥180,
J&E-¥120

Fukuyama Museum of Art

Address: 2-4-3 Nishi-machi, Fukuyama City

Tel: 084-932-2345

Hours: 9:30 am – 5:00 pm

Closed: Mondays (except national holidays)

HP: <http://www.city.fukuyama.hiroshima.jp/site/fukuyama-museum/>

👏 A ticket to see both the special exhibition and the art collection is available for ¥1,100.

Special Exhibition

■ **Exhibition of tupera tupera's Picture Book World for You, Me & Everyone**

Period: Until Sunday, March 24

Admission Fee: A&U-¥1,000, H & under-Free

Collection Exhibition

Admission Fee: A&U-¥300, H & under-Free

■ **Europe Painted in Pictures**

Period: Until Sunday, March 31

Onomichi City Museum of Art

Address: 17-19 Nishitsuchido-cho, Onomichi City
(Inside Senkoji Park)

Tel: 0848-23-2281

Hours: 9:00 am – 5:00 pm

Closed: Mondays except national holidays

URL: <http://www7.city.onomichi.hiroshima.jp/>

Special Exhibition

■ **Lisa Larson Exhibition**

Period: Saturday, March 16 – Monday, May 6

Admission Fee: A-¥800, U&H-¥550,
70+, J & under-Free

Okuda Genso Sayume Art Museum

Address: 453-6 Higashi Sakeya-machi, Miyoshi City

Tel: 0824-65-0010

Hours: 9:30 am – 5:00 pm

◇ Open until 9:00 pm on March 21

Closed: March 13

URL: <http://www.genso-sayume.jp>

Special Exhibition

■ **Yoshimura Yoshio**

Period: Until Sunday, April 7

Admission Fee:

A-¥1,000, Tickets for couple- ¥1,800,
U&H-¥500, J & under-Free

Please feel free to contact the International Exchange Lounge at 082-247-9715.

E-mail: golounge@pcf.city.hiroshima.jp

March 2019

Hiroshima Toyo Carp Schedule 2019

The Toyo Carp (Hiroshima's professional baseball team) plays about 60 games at the MAZDA Zoom-Zoom Stadium Hiroshima every year.

GAME SCHEDULE ◆: Interleague Play

APRIL

Friday, 5th, 6:00 pm / vs. Hanshin Tigers
 Saturday, 6th, 2:00 pm / vs. Hanshin Tigers
 Sunday, 7th, 1:30 pm / vs. Hanshin Tigers
 Tuesday, 9th, 6:00 pm / vs. Tokyo Yakult Swallows
 Wednesday, 10th, 6:00 pm / vs. Tokyo Yakult Swallows
 Thursday, 11th, 6:00 pm / vs. Tokyo Yakult Swallows
 Friday, 19th, 6:00 pm / vs. Yokohama DeNA Baystars
 Saturday, 20th, 2:00 pm / vs. Yokohama DeNA Baystars
 Sunday, 21st, 1:30 pm / vs. Yokohama DeNA Baystars
 Tuesday, 23rd, 6:00 pm / vs. Chunichi Dragons
 Wednesday, 24th, 6:00 pm / vs. Chunichi Dragons
 Thursday, 25th, 6:00 pm / vs. Chunichi Dragons

JUNE

Saturday, 1st, 2:00 pm / vs. Hanshin Tigers
 Sunday, 2nd, 1:30 pm / vs. Hanshin Tigers
 ◆ Friday, 7th, 6:00 pm / vs. Fukuoka SoftBank Hawks
 ◆ Saturday, 8th, 2:00 pm / vs. Fukuoka SoftBank Hawks
 ◆ Sunday, 9th, 1:30 pm / vs. Fukuoka SoftBank Hawks
 ◆ Tuesday, 18th, 6:00 pm / vs. Chiba Lotte Marines
 ◆ Wednesday, 19th, 6:00 pm / vs. Chiba Lotte Marines
 ◆ Thursday, 20th, 6:00 pm / vs. Chiba Lotte Marines
 ◆ Friday, 21st, 6:00 pm / vs. Orix Buffaloes
 ◆ Saturday, 22nd, 2:00 pm / vs. Orix Buffaloes
 ◆ Sunday, 23rd, 1:30 pm / vs. Orix Buffaloes

MAY

Friday, 3rd, 6:00 pm / vs. Yomiuri Giants
 Saturday, 4th, 2:00 pm / vs. Yomiuri Giants
 Sunday, 5th, 1:30 pm / vs. Yomiuri Giants
 Friday, 10th, 6:00 pm / vs. Yokohama DeNA Baystars
 Saturday, 11th, 2:00 pm / vs. Yokohama DeNA Baystars
 Sunday, 12th, 1:30 pm / vs. Yokohama DeNA Baystars
 Tuesday, 14th, 6:00 pm / vs. Tokyo Yakult Swallows
 Wednesday, 15th, 6:00 pm / vs. Tokyo Yakult Swallows
 Wednesday, 22nd, 6:00 pm / vs. Chunichi Dragons
 Friday, 31st, 6:00 pm / vs. Hanshin Tigers

JULY

Tuesday, 2nd, 6:00 pm / vs. Tokyo Yakult Swallows
 Wednesday, 3rd, 6:00 pm / vs. Tokyo Yakult Swallows
 Thursday, 4th, 6:00 pm / vs. Tokyo Yakult Swallows
 Friday, 19th, 6:00 pm / vs. Yomiuri Giants
 Saturday, 20th, 6:00 pm / vs. Yomiuri Giants
 Sunday, 21st, 6:00 pm / vs. Yomiuri Giants
 Tuesday, 23rd, 6:00 pm / vs. Chunichi Dragons
 Wednesday, 24th, 6:00 pm / vs. Chunichi Dragons
 Thursday, 25th, 6:00 pm / vs. Chunichi Dragons

TICKET OFFICES

◆ MAZDA Zoom-Zoom Stadium Hiroshima

Tickets can be purchased at the ticket booths at the entrances of the stadium (closed on August 6).

Booth Opening Times

11:30am (days with night games) / 11:00am (days with day games)

11:00am – 4:00pm (days when there are no games)

◆ CARPIO (6-7 Hacho-bori, Naka-ku)

OPEN: 10:00am – 4:00pm

CLOSED: No fixed times

TEL: 227-2222

◆ Convenience Stores

Tickets are available at convenience stores such as Lawson, Seven-Eleven, FamilyMart.

ACCESS

MAZDA Zoom-Zoom Stadium Hiroshima:

From JR Hiroshima Station, walking time to the stadium is 10 minutes.

INQUIRIES

Hiroshima Toyo CARP

Tel. (082) 223-2141

Fax. (082) 502-1189

HP: www.carp.co.jp/

Please feel free to contact the International Exchange Lounge at 082-247-9715.

E-mail: golounge@pcf.city.hiroshima.jp

March 2019

Sanfrecce Hiroshima FC Schedule 2019

GAME SCHEDULE Date / Kick Off / Game / Venue / Ticket Sales

2019 J1 League

Sun., March 17 / 3:00 pm / vs. Matsumoto Yamaga F.C. / EDION Stadium Hiroshima / Now on sale
 Sat., April 6 / 2:00 pm / vs. Gamba Osaka / EDION Stadium Hiroshima / From Sat., March 2
 Fri., April 19 / 7:00 pm / vs. F. C. Tokyo / EDION Stadium Hiroshima / From Sat., March 2
 Fri., May 3 / 2:00 pm / vs. Yokohama F. Marinos / EDION Stadium Hiroshima / From Sat., April 6
 Fri., May 17 / 7:00 pm / vs. Sagantosu / EDION Stadium Hiroshima / From Sat., April 6
 Sat., June 15 or Friday, June 14 / 7:00 pm / vs. Shonan Bellmare / EDION Stadium Hiroshima / From Sat., May 4
 Sat., June 22 or Wed., July 31 / 7:00 pm / vs. Kawasaki Frontale / EDION Stadium Hiroshima / From Sat., May 4
 Sat., July 6 / 7:00 pm / vs. Cerezo Osaka / EDION Stadium Hiroshima / From Sat., June 1
 Sat., August 3 / 7:00 pm / vs. Hokkaido Consadole Sapporo / EDION Stadium Hiroshima / From Sat., July 6
 Sat., August 24 or Fri., August 23 / 7:00 pm / vs. Oita Trinita / EDION Stadium Hiroshima / From Sat., July 6
 Sat., September 28 or Sun., September 29 / TBC / vs. Nagoya Grampus / EDION Stadium Hiroshima / TBC
 Sat., October 5 or Sunday, October 6 / TBC / vs. Vissel Kobe / EDION Stadium Hiroshima / From Sat., September 7
 November 8 (Fri.), 9 (Sat.) or 10 (Sun.); or October 29 (Tue.) or 30 (Wed.) / TBC / vs. Urawa Red Diamonds /
 EDION Stadium Hiroshima / From Sat., October 5
 Sat., November 23 or Tue., November 5 / TBC / vs. Kashima Antlers / EDION Stadium Hiroshima / Sat., October
 5
 Sat., December 7 / TBC / vs. Vegalta Sendai / EDION Stadium Hiroshima / From Sat., November 2

2019 AFC Champions League 2019

Tue., March 12 / 7:00 pm / vs. Melbourne Victory (AUS) / EDION Stadium Hiroshima
 Wed., April 10 / 7:00 pm / vs. (Daegu FC (KOR) / EDION Stadium Hiroshima
 Wed., May 8 / 7:00 pm / Guangzhou Evergrande FC (CHN) / EDION Stadium Hiroshima

TICKETS Seats / Advance Tickets / At the Door

- ◆ Reserved Seats SS / ¥5,300 / ¥5,900 ◆ Reserved Seats S / ¥4,200 / ¥4,800
- ◆ Unreserved Seats for Adults / ¥2,600 / ¥3,200
- ◆ Unreserved Seats for Students (High School Students and under) / ¥1,000 / ¥1,500

ACCESS

◆ **EDION Stadium Hiroshima (Hiroshima Big Arch)**

Take the *Astramline* bound for *Koiki-koen-mae* (広域公園前) and get off at the last station, *Koiki-koen-mae* (広域公園前).

From *Hondori* Station: One way fare - ¥480 Travel time - 35 min.

TICKET OFFICES

- ◆ Sanfrecce Hiroshima Official Shop V-POINT (Shareo, underground shopping mall) / Tel. 248-3317 / Mon. – Sat.: 11 am – 9 pm; Sun. & national holidays: 10 am – 8 pm / Open every day
- ◆ EDION Play Guide (SUNMALL, 1F) ◆ Fukuya (Hiroshima Station) (7F) ◆ Alpark Tenmaya (3F)
- ◆ Convenience Stores (FamilyMart, Seven-Eleven, CircleKSunkus and Lawson)

INQUIRIES: Sanfrecce HIROSHIMA Tel. 233-3233 URL: www.sanfrecce.co.jp

Please feel free to contact the International Exchange Lounge at 082-247-9715.

E-mail: golounge@pcf.city.hiroshima.jp

March 2019

Hiroshima Dragonflies

2018 – 2019 B2 League

🌀 Hiroshima Dragonflies is a professional basketball team in Hiroshima.

GAME SCHEDULE Date / Starting Time / Game / Venue

✧ Only the games scheduled to be held in Hiroshima are listed below. For away games, please check the Hiroshima Dragonflies' official website.

🌀 MARCH

Saturday, March 9 / 6:00 pm / vs. F Eagles Nagoya / Hiroshima Sun Plaza
 Sunday, March 10 / 1:30 pm / vs. F Eagles Nagoya / Hiroshima Sun Plaza
 Saturday, March 23 / 6:00 pm / vs. Kagawa Five Arrows / Hiroshima Sun Plaza
 Sunday, March 24 / 1:30 pm / vs. Kagawa Five Arrows / Hiroshima Sun Plaza
 Saturday, March 30 / 6:00 pm / vs. Shimane Susanoo Magic / Hiroshima Sun Plaza
 Sunday, March 31 / 1:30 pm / vs. Shimane Susanoo Magic / Hiroshima Sun Plaza

🌀 APRIL

Friday, April 19 / 7:00 pm / vs. Kumamoto Volters / Hiroshima Sun Plaza
 Saturday, April 20 / 2:00 pm / vs. Kumamoto Volters / Hiroshima Sun Plaza

TICKETS (At the Door)

- ◆ Reserved seats: ¥3,700 - ¥13,400
- ◆ Unreserved seats (1st floor seats): Adults-¥3,200 Children-¥2,100
- ◆ Unreserved seats (2nd floor seats): Adults-¥2,600 Children-¥1,500

ACCESS

- ◆ **Hiroshima Sun Plaza** (1-1 Shoko Center 3-chome, Nishi-ku, Hiroshima City)
 From JR Shin Inokuchi (新井口) Station or Shoko Center Iriguchi (商工センター入口) Streetcar Stop, walking time to the venue is 5 minutes.
- ◆ **Kure City Sogo Taikukan** (7-1 Hiro Ohshingai 1-chome, Kure City)
 From JR Hiro (広) Station (JR Kure Line), walking time to the venue is 5 minutes.

TICKET OFFICES

- ◆ Hiroshima Dragonflies Club Shop (Hiroshima Marina Hop / Tel. 082-297-6825 / 10:00 am – 8:00 pm)
 (The club shop sells advance tickets only.)
- ◆ Ticket PIA ◆ Convenience Stores (FamilyMart, Seven-Eleven, CircleKSunkus and Lawson)

INQUIRIES

- ◆ Hiroshima Dragonflies Tel. 082-297-6825 (weekdays, 10:00 am – 5:30 pm)
 HP: <http://hiroshimadragonflies.com>
- ◆ B. League Official HP: <https://www.bleague.jp/>

Please feel free to contact the International Exchange Lounge at 082-247-9715.

E-mail: golounge@pcf.city.hiroshima.jp

March 2019

Seasonal Event Information

March 2019

★ Event schedules are subject to change. Please contact event organizers before you go.

Events Held in Hiroshima City



The 6th, 16th & 26th of Every Month

Talk with A-bomb Survivors 「6」のつく日 語り部さんとお話ししよう!

TIME: 11:00 am – 5:00 pm Story telling: ① 1:00 pm ② 3:00 pm

PLACE: Social Book Café Hachidori-sha, Dobashi-cho, Naka-ku

DIRECTIONS: 5 minutes' walk from Dobashi-cho streetcar stop.

FEE: Free admission ✧ You need to order at least one drink per person.

INQUIRIES: Social Book Café Hachidorisha 082-576-4368 E-mail: hachidorisha@gmail.com

☑ This is not like a lecture, but a casual talk with A-bomb survivors. You can talk with A-bomb survivors in English on the 6th of every month.

★ Social Book Café Hachidorisha ★

OPEN HOURS: Wednesday, Thursday & Friday: 3:00 pm – 11:00 pm

Saturday, Sunday, national holidays: 11:00 am – midnight

The 6th, the 16th & the 26th of every month: Open from 11:00am

CLOSED: Mondays & Tuesdays

Friday, February 8 – Sunday, April 7

teamLab: Digitized Hiroshima Castle チームラボ 広島城光の祭

TIME: 6:30 pm – 9:30 pm (entry allowed up to 9:00 pm.)

PLACE: Hiroshima Castle, Motomachi, Naka-ku

DIRECTIONS: 8 minutes' walk from Kamiya-cho Higashi or Kamiya-cho Nishi streetcar stop.

TICKETS: 16 years old and above: ¥1,000, Junior high & elementary school students-¥700

INQUIRIES: Executive Committee (RCC Broadcasting) 082-222-1133 (weekdays, 10 am – 5 pm)

Saturday, February 23 – Sunday, March 24

Hiroshima ARtery 平和大通り 芸術展 Hiroshima ARtery

PLACE: Open spaces on Peace Boulevard (heiwa odori); Yebiden Gallery; former Bank of Japan, Hiroshima Branch; Hotel Sunroute Hiroshima; ANA Crowne Plaza Hotel; Mitsui Garden Hotel Hiroshima and Oriental Hotel Hiroshima

DIRECTIONS: Get off at Chuden-mae or Fukuro-machi streetcar stop.

INQUIRIES: Hiroshima Convention & Visitors Bureau 082-554-1814

E-mail: kankou@hirosima-navi.or.jp HP: http:Hiroshima-artery.jp

☑ Artworks by eight artists are on display on t Peace Boulevard.

★ Art Marché and Concerts ★

TIME & DATE: Saturday, March 16 & Sunday, March 17, 11:00 am – 4:00 pm

PLACE: Open space in front of Hiroshima Crystal Plaza Building

Please feel free to contact the International Exchange Lounge at 082-247-9715.

E-mail: golounge@pcf.city.hiroshima.jp

March 2019

Sundays, March 3 & 17**Hiroshima Minato Marché** ひろしまみなとマルシェ**TIME:** 9:00 am – 3:00 pm**PLACE:** Open space between East and West Terminals of Hiroshima Port, Minami-ku**DIRECTIONS:** Take the No. 1, 3 or 5 streetcar bound for Hiroshima Port and get off at the last stop, Hiroshima Port.**INQUIRIES:** Hiroshima Minato Marché Office 082-255-6646

☐ You can buy and taste locally-grown fresh vegetables and other food products at the market.

The “Hiroshima Minato Festival” will be held on March 16 & 17 (see below for more information).

Monday, March 11**Memorial Service in Hiroshima for the Victims of the Great East Japan****Earthquake in Hiroshima** 3.11 ひがしにほんだいしんさい 東日本大震災 わす を忘れない ついで 追悼の集い ひろしま 広島**TIME:** 5:30 pm – 7:30 pm**PLACE:** *Shinsui Terrace*, Motoyasugawa River inside Peace Memorial Park, Naka-ku**DIRECTIONS:** Get off at Genbaku Dome-mae Streetcar Stop.**INQUIRIES:** Hiroshima City Volunteer Information Center 082-264-6408

☐ Offer a candlelit silent prayer for the earthquake victims.

✋ **3.11 HANDS IN PRAYER** ✋

In addition to the evening service, please join hands with those around you and offer a silent prayer for the victims of the Great East Japan Earthquake at 2:46 pm on March 11.

Saturday, March 16 & Sunday, March 17**The 7th Hiroshima Minato Festival** だい かいひろしま 第7回 広島みなとフェスタ**TIME:** 10:00 am – 4:00 pm**PLACE:** *Hiroshima Minato Koen* (park), around Hiroshima Port & Ninoshima Island, Minami-ku**DIRECTIONS:**◆ *Hiroshima Minato Koen* & Hiroshima Port:

Take the No. 1, 3 or 5 streetcar bound for Hiroden Ujina or Hiroshima-ko and get off at the last stop, Hiroshima-ko.

◆ Ninoshima Island: Get on a ferry to Ninoshima Island from Hiroshima Port.

INQUIRIES: Executive Committee 082-250-8935

☐ There will be stage performances, a food area and workshops and more.

Sunday, March 17**Momomi (Peach Blossoms-viewing) Tea Ceremony** もも み ちやかい 桃見茶会**TIME:** 10:00 am – 3:00 pm**PLACE:** Shukkeien Garden**DIRECTIONS:** 5 minutes' walk from Shukkeien-mae streetcar stop.**FEE:** ¥1,200 for the tea ceremony

◇ Admission fee for the garden is also required.

Adults - ¥260, University & high school students - ¥150 Junior high & elementary school students - ¥100
--

INQUIRIES: Shukkeien Garden 082-221-3620**Thursday, March 21****Hiroshima Kanshu (hot sake) Festival** しんしゅん ひろしまかんしゅ 新春！広島燗酒フェスティバル**TIME:** 1:30 pm – 7:30 pm**PLACE:** Hiroshima Castle (*Ni-no-maru*), inside *Chuo Koen* (park), Naka-ku**DIRECTIONS:** ① 15 minutes' walk from Kamiya-cho-higashi or Kamiya-cho-nishi streetcar stop.

Please feel free to contact the International Exchange Lounge at 082-247-9715.

E-mail: golounge@pcf.city.hiroshima.jp

March 2019

- ② Take a Hiroshima *Meipuru-pu* (Hiroshima Sightseeing Loop Bus; Orange route & Lemon route) and get off at Hiroshima-jo (Gokoku-jinja-mae). 6 minutes' walk from there.

TICKETS: ♦ **Food is not included in the ticket prices below**

Advance: 1,500 (for 5 cups of sake) / At the venue: ¥300 per cup

♦ You can buy advance tickets online (RCC online ticket: <http://www.cnplayguide.com/rcc/>).

INQUIRIES: "Itsumono Gohan to Nihonshu to. Fujimoto-ya" 082-221-2618 (Mon. – Sat., 11 am – 5 pm)

Friday, March 22

OSAKE ~ Shall we drink "sake" in Hiroshima? ~

TIME: 3:00 pm – 7:00 pm ♦ Reception will be closed at 6:30 pm.

PLACE: Hiroshima Museum of Art, Motomachi, Naka-ku

DIRECTIONS: 5 minutes' walk from Kamiya-cho-higashi streetcar stop.

MUSEUM ADMISSION: Adults-¥1,300 University & high school students-¥1,000

Junior high & elementary school students-¥600

EVENTS & PARTICIPATION FEE:

♦ Japanese Culture Experience: *Koto* (traditional Japanese harp): ¥1,000

♦ Tasting of Japanese *sake*: ¥1,000 / 3 cups ♦ Soft drinks will also be prepared for minors.

♦ Wearing *kimono*: Adults-¥2,000 Children-¥1,000

INQUIRIES: Chugoku Shimbun 082-236-2244 E-mail: osake_hiroshima@c-kikaku.co.jp

Thursday, March 21 – Sunday, April 7

Space Battleship Yamato 2202 World in Hiroshima Marina Hop

うちゅうせんかん 宇宙戦艦 ヤマト 2202 ワールド in 広島 マリーナホップ

TIME: 10:00 am – 6:00 pm (entry allowed up to 5:30 pm.)

PLACE: Hiroshima Marina Hop, Mermaid Space, Kanon-shin-machi, Nishi-ku

DIRECTIONS: Take the No. 3 (from JR Hiroshima Station) or the No. 8 (from JR Yokogawa Station) bus bound for Kanon Marina Hop / Hiroshima Heliport and get off at the last stop, Kanon Marina Hop.

TICKETS: ♦ Advance: 18 years old and above: ¥900

Senior high, junior high & elementary school students-¥500

♦ At the door: 18 years old and above: ¥1,000

Senior high, junior high & elementary school students-¥600

♦ Admission free for preschoolers (they should be accompanied by their guardians).

♦ Advance tickets are sold at Lawson, Seven-Eleven, Ticket PIA and *Soramikan* (inside Hiroshima Marina Hop) until Wednesday, March 20.

INQUIRIES: Space Battleship Yamato Hiroshima Event Office

070-5599-5629 (weekdays, 10 am – 5 pm)

☐ "Space Battleship Yamato" is a Japanese science fiction anime series.

Saturday, March 23 & Sunday, March 24

Setouchi Tabi-guse Festival 2019 せとうち たび 旅グセ。フェスタ 2019

TIME: Mar. 23: 10:00 am – 6:00 pm / Mar. 24: 10:00 am – 5:00 pm

PLACE: The open space of the former Municipal Baseball Stadium, Motomachi, Naka-ku

DIRECTIONS: Get off at Kamiya-cho-nishi or Genbaku Dome-mae streetcar stop.

ADMISSION FEE: Free ♦ Food and drink will incur extra charges.

INQUIRIES: Hiroshima HOME TV 082-221-4760

☐ You can enjoy various dishes from around the Setouchi region. *Kagura* and *Awa-odori* performances will also be held.

Please feel free to contact the International Exchange Lounge at 082-247-9715.

E-mail: golounge@pcf.city.hiroshima.jp

March 2019

Saturday, March 30**An Evening of Kagura** よ かがらこうえん
夜 神楽 公演**TIME:** ◆ Kagura Performance: 6:00 pm – 6:45 pm (The venue will open at 5:30 pm.)

◆ Q&A and Photo Session: From 6:45 pm onward

VENUE: Hiroshima Kenmin Bunka Center, Otemachi, Naka-ku (located near Hondori Shopping Street)**DIRECTIONS:** 3 minutes' walk from Kamiya-cho-nishi or Hondori streetcar stop.**TICKETS:** Adults-¥1,000 Students-¥500 For groups of 10 or more-¥800

◇ Admission free for children 3 and under (they should be seated on a parent or guardian's lap.)

◇ Tickets will be sold from 5:30 pm on the day of performance at the center. There are no advance tickets.

INQUIRIES: Hiroshima Orizuru Tower Tourist Information Center 090-7131-8055 (10 am – 6 pm)HP: <http://www.hiroshima-kagura.com>**Sunday, April 7****Kan-ou (Cherry Blossoms-viewing) Tea Ceremony** かんおうちやかい
観桜 茶会**TIME:** TBC**PLACE:** Shukkeien Garden**DIRECTIONS:** 5 minutes' walk from Shukkeien-mae Streetcar Stop.**ADMISSION FEE:** Adults - ¥260, University & high school students - ¥150, Junior high & elementary school students - ¥100 ◇ Fee for the tea ceremony is also required.**INQUIRIES:** Shukkeien Garden 082-221-3620**Saturday, April 27 – Monday, April 29****Hiroshima Yoga Peace '19** ひろしまヨガピース '19**SCHEDULE:** Please check the website for the schedule.

April 27: Noon – 7:30 pm / April 28: 8:00 am – 7:30 pm / April 29: 8:00 am – 5:30 pm

VENUES: Jisso-ji Temple, Shozenbo Temple, Chosen-ji Temple & Honryu-ji in Teramachi, Naka-ku**DIRECTIONS:** Get off at Teramachi streetcar stop.**FEE:** ¥3,500 for 1 class; ¥9,500 for 3 classes; ¥14,000 for 5 classes. Yoga mat rental: ¥500 / day**TO APPLY:** Applications will be accepted through the website (<https://ticketyogap.shop-pro.jp/>) (Japanese only).**INQUIRIES:** Hiroshima Yoga Peace Executive Committee 080-5629-1892HP: <http://www.hiroshima-yogapeace.com>

☑ Famous yoga instructors from Japan and abroad will come and teach you yoga from various styles of yoga.

★ **Charity yoga class** ★ **Reservations will NOT be required for this class.**

TIME & DATE: April 28, 8:00 am – 9:30 am

VENUE: Shozenbo Temple

PARTICIPATION FEE: Free

Saturday, April 27 – Monday, May 6**Railway Toy Park** てつどう
鉄道 おもちゃ 体験 博**TIME:** 10:00 am – 5:00 pm ◇ May 6: 10 am – 4 pm

◇ Entry allowed up to 30 minutes before closing time.

PLACE: Hiroshima Kenritsu Hiroshima Sangyo Kaikan (Hiroshima Prefectural Industrial Exhibition Hall), West Exhibition Hall, Hijiyama, Minami-ku**DIRECTIONS:** Get off at Minami Kuyakusho-mae streetcar stop.**TICKETS:** ◆ Advance: Junior high school students and above-¥800

3 years old – Elementary school students-¥600

◆ At the door: Junior high school students and above-¥1,000

3 years old – Elementary school students-¥800

◇ Advance tickets are sold at EDION *Hoten* (SUNMALL, 1F), Fukuya Department Store (Hiroshima Station Shop), *Alpark* Tenmaya, Lawson, Ticket PIA, Seven-Eleven, e+**INQUIRIES:** HOME Event Center 082-221-7116 (weekdays, 10 am – 5 pm)

Please feel free to contact the International Exchange Lounge at 082-247-9715.

E-mail: golounge@pcf.city.hiroshima.jp

March 2019

Thursday, May 2 – Monday, May 6**Gyoza (dumplings) Festival with World Beer and Gourmet Stadium 2019**

ぎょうざ フェス with 世界のビールとグルメスタジアム 2019

TIME: 10:00 am – 9:00 pm ☆ May 2: Noon – 9:00 pm**PLACE:** The open space of the former Municipal Baseball Stadium, Motomachi, Naka-ku**DIRECTIONS:** Get off at Kamiya-cho-nishi or Genbaku Dome-mae streetcar stops.**ADMISSION FEE:** Free ☆ Food and drink will incur extra charges.**INQUIRIES:** Hiroshima TV Event information Center 082-567-2500 (weekdays, 10 am – 6 pm)

☑ You can enjoy various gyoza dishes, and beer from all over the world.

☑ Remember, no driving if you drink alcohol.

Events Held on Miyajima**Friday, March 8****Memorial Service for Used Kitchen Knives** 庖丁供養**TIME:** From 11:00 am onward**PLACE:** Daishoin Temple, Miyajima**DIRECTIONS:** Get off at JR Miyajima-guchi Station (JR Sanyo Line) or Miyajima streetcar stop (Hiroden Streetcar Miyajima Line), then take a ferry to Miyajima.**INQUIRIES:** Daishoin Temple 0829-44-0111

☑ This is a ritual to show gratitude for well-used kitchen knives.

Wednesday, March 20**Kiyomori Shrine Festival** 清盛神社祭**TIME:** From 11:00 am onward**PLACE:** Kiyomori Shrine, Miyajima**DIRECTIONS:** Get off at JR Miyajima-guchi Station (JR Sanyo Line) or Miyajima streetcar stop (Hiroden Streetcar Miyajima Line), then take a ferry to Miyajima.**INQUIRIES:** Itsukushima Shrine 0829-44-2020☑ This is a festival dedicated to the illustrious memory of *Taira-no Kiyomori* (1118-1181). After the ritual, *Bugaku* (court music and dance) will be played at Itsukushima Shrine.**Thursday, March 21 – Wednesday, April 3****The 19th Miyajima Hina Doll Presentation** 第19回みやじまひなめぐり**PLACE:** Various places in Miyajima-choResidences or shops displaying a pink flag will allow you to view their *Hina* dolls.**DIRECTIONS:** Get off at JR Miyajima-guchi Station (JR Sanyo Line) or Miyajima streetcar stop (Hiroden Streetcar Miyajima Line), then take a ferry to Miyajima.**ADMISSION FEE:** Free**INQUIRIES:** *Miyajima Kanko Kyokai* (Tourist Association) 0829-44-2011☑ Antique *Hina* dolls which have been passed down from established families in Miyajima will be on display.**Sunday, March 24****The 15th Miyajima Kiyomori Festival** 第15回春を呼ぶ宮島清盛まつり**TIME:** 1:00 pm – 3:30 pm**PLACE:** Miyajima Pier → Omote-sando Shopping Street → Mikasa Beach → Itsukushima Shrine → Kiyomori Shrine

Please feel free to contact the International Exchange Lounge at 082-247-9715.

E-mail: golounge@pcf.city.hiroshima.jp

March 2019

DIRECTIONS: Get off at JR Miyajima-guchi Station (JR Sanyo Line) or Miyajima streetcar stop (Hiroden Streetcar Miyajima Line), then take a ferry to Miyajima.

INQUIRIES: *Miyajima Kanko Kyokai* (Tourist Association) 0829-44-2011

☐ People in costumes from the Heian Period (794-1185) will parade from Miyajima Pier to Kiyomori Shrine.

Events Held Outside of Hiroshima City

Saturday, February 9 – Sunday, March 24

Hina Doll Presentation in Takehara たけはら まちな ひな 町並み雛めぐり

TIME: 10:00 am – 4:00 pm (some places will open until 5:00 pm.)

PLACE: Around the Special Directory of Historical Buildings Area in Takehara City

DIRECTIONS: 15 minutes' walk from JR Takehara Station (JR Kure Line).

ADMISSION FEE: Some places will require an admission fee.

INQUIRIES: NPO Network Takehara 0846-22-0214

☐ March 3rd is *Hina Matsuri* (*Hina Festival*), a day to wish girls good health and a long life. Most families with daughters celebrate by displaying *hina* dolls. The dolls are offered sweetened puffed rice (*hina-arare*), white sake containing rice malt (*shirozake*), colored lozenge-shaped rice cakes (*hishi-mochi*), and other things (abstracted from The Japanese-English Dictionary for Conversation about Japan, p.578, Obunsha). Antique *hina* dolls will be on display at this event. Various events will also be held during the event period.

Saturday, February 16 – Sunday, March 17

The 16th Hina Matsuri (Girls' Festival) in Tomo だい かいとも まちなみ まつり 第16回 鞆・町並ひな祭

TIME: Open hours vary according to facilities.

◇ *Tomo-no-ura Rekishi Minzoku Shiryō Kan* (museum): 9:00 am – 5:00 pm

PLACE: Tomo-cho, Fukuyama City

DIRECTIONS: Take a Tomotetsu bus from JR Fukuyama Station (JR Sanyo Line) and get off at Tomo-no-ura (a 30 min. bus ride).

ADMISSION FEE: Free ◇ Admission Fee for *Tomo-no-ura Rekishi Minzoku Shiryō Kan* is required: Adults & university students-¥150, High school students and under-Free

INQUIRIES: Executive Committee (*Tomo-no-ura Rekishi Minzoku Shiryō Kan*) 080-5614-2778

☐ March 3rd is *Hina Matsuri* (*Hina Festival*), a day to wish girls good health and a long life. Most families with daughters celebrate by displaying *hina* dolls. The dolls are offered sweetened puffed rice (*hina-arare*), white sake containing rice malt (*shirozake*), colored lozenge-shaped rice cakes (*hishi-mochi*), and other things (abstracted from The Japanese-English Dictionary for Conversation about Japan, p.578, Obunsha). Antique *hina* dolls will be on display at this event.

Saturday, February 16 – Sunday, March 17

Hina Matsuri (girl's festival) in Joge-cho てんりょうじょうげ 天領上下ひなまつり

PLACE: *Shirakabe no Machinami* (Shopping Street), Joge-cho, Fuchu City

DIRECTIONS: 3 minutes' walk from JR Joge Station (JR Fukuen Line).

INQUIRIES: Executive Committee 0847-62-3999

☐ March 3rd is *Hina Matsuri* (*Hina Festival*), a day to wish girls good health and a long life. Most families with daughters celebrate by displaying *hina* dolls. The dolls are offered sweetened puffed rice (*hina-arare*), white sake containing rice malt (*shirozake*), colored lozenge-shaped rice cakes (*hishi-mochi*), and other things (abstracted from The Japanese-English Dictionary for Conversation about Japan, p.578, Obunsha). *Hina* dolls will be on display at this event.

☐ A market area, "*Deko-ichi*", will be held on March 2 & 3. *Kodawari-ichi* market will be held on March 16 & 17.

Please feel free to contact the International Exchange Lounge at 082-247-9715.

E-mail: golounge@pcf.city.hiroshima.jp

March 2019

Wednesday, March 20**Hatsuka-no-ichi Market** はつか いち
廿日の市**TIME:** 8:00 am – 11:30 am**PLACE:** In front of Hatsukaichi City Hall, Hatsukaichi City**DIRECTIONS:** 5 minutes' walk from Hatsukaichi Shiyakusho-mae (Hiroden Streetcar Miyajima Line).**INQUIRIES:** *Hatsukaichi Kanko Kyokai* (Tourist Association) 0829-31-5656**Saturday, March 23 & Sunday, March 24****Spring Festival in Noji** のうじはるまつり
能地春祭り**TIME:** 1:00 pm – 5:00 pm**PLACE:** Noji, Saizaki-cho, Mihara City**DIRECTIONS:** 10 minutes' walk from JR Aki-saizaki Station (JR Kure Line).**INQUIRIES:** *Mihara City Kyoiku linkai* 0848-64-9234

☐ The *Futon Danjiri* (a float with seven futons on top) and *Shishi-daiko* (Japanese drums played by children) parade are the highlights of this festival. *Futon-danjiri* have been designated as an intangible cultural asset of Hiroshima Prefecture.

Sunday, March 24**Setoda Lemon Festival** せとだレモン祭り**TIME:** 10:00 am – 3:00 pm**PLACE:** Open space in front of *Setoda Shimin Kaikan*, in front of Kosanji Temple Museum nad Shiomachi shopping street, Setoda-cho, Onomichi City**DIRECTIONS:** ① Take a "*Shimanami Line*" express bus from Hiroshima Bus Center (Hiroshima Sogo Department Store, 3F) and get off at Setoda Bus Stop (a 1 hour and 40 min. bus ride). Then take another bus from there and get off at Kosanji-mae.

◇ Please note that reservations are required to take a "*Shimanami Liner*". Call the Hiroko Reservation Center (082-238-3344) for more information.

② Get on a ferry from Mihara Port or Onomichi Port and get off at Setoda Port. 10 minutes' walk from the port.

INQUIRIES: *Onomichi City Kanko Kyokai* (Tourist Association) 0848-36-5495**Wednesday, March 27 – Sunday, April 7****Sakura (cherry blossom) Festival at Kosanji Temple** こうさんじさくら
耕三寺桜まつり**PLACE:** Kosanji Temple & Kosanji Temple Museum, Onomichi City**DIRECTIONS:** ① Take a "*Shimanami Liner*" express bus from Hiroshima Bus Center (Hiroshima Sogo Department Store, 3F) and get off at Setoda Bus Stop (a 1 hour and 40 min. bus ride). Then take another bus from there and get off at Kosanji-mae.

◇ Please note that reservations are required to take a "*Shimanami Liner*". Call the Hiroko Reservation Center (082-238-3344) for more information.

② Get on a ferry from Mihara Port or Onomichi Port and get off at Setoda Port. 10 minutes' walk from the port.

ADMISSION FEE FOR THE TEMPLE & THE MUSEUM:

Adults-¥1,400 University students-¥1,000 High school students-¥800

Junior high school students and under-Free

INQUIRIES: Kosanji Temple & Kosanji Temple Museum 0845-27-0800

☐ 200 cherry blossom trees will be in full bloom during this period. Various events such as offering up cherry blossom-flavored tea and a photo contest will be held.

Please feel free to contact the International Exchange Lounge at 082-247-9715.

E-mail: golounge@pcf.city.hiroshima.jp

March 2019

Sunday, April 7**Sakura (cherry blossom) Festival in Hatsukaichi** はつかいち^{さくら}桜まつり**TIME:** 9:30 am – 4:30 pm**PLACE:** Around the Northern Area of Mokuzai-ko (port), Shohoku Ground, Hatsukaichi City**DIRECTIONS:** 15 minutes' walk from JR Hatsukaichi Station (JR Sanyo Line).**INQUIRIES:** *Hatsukaichi Kanko Kyokai* (Tourist Association) 0829-31-5656

☐ Parade, stage performances, kiosks and more.

Saturday, April 13**Sakura (cherry blossom) Tea Ceremony** さくら^{ちやかい}茶会**TIME:** 11:00 am – 3:30 pm**PLACE:** In front of JR Onomichi Station, Onomichi City**DIRECTIONS:** Get off at JR Onomichi Station (JR Sanyo Line).**TICKETS:** Advance tickets-¥2,000 At the venue-¥2,500

✧ Tickets include the fee for a cup of green tea, a lunch box and other costs.

INQUIRIES: *Onomichi Shoko Kaigisho, Josei Kai* 0848-22-2165**Saturday, April 27****Kagura Performance in Yoshiwa** はるせんぼつよしわかぐらきょうえんたいかい
春選抜吉和神楽競演大会**TIME:** 9:15 am – 6:00 pm (The venue will open at 8:30 am.)**PLACE:** Gymnasium inside *Mominoki Shinrin Koen* (Forest Park), Yoshiwa, Hatsukaichi City**DIRECTIONS:** From Hatsukaichi Shiyakusho-mae streetcar stop (Hiroden Miyajima Line), take a bus bound for Yoshiwa and get off at Yoshiwa-shisho (a 90 min. bus ride)**TICKETS:** ◆ Advance: High school students and above-¥2,000

Junior high and elementary school students-¥500

✧ Advance tickets are sold at *Hiroshima Yume Plaza* on the *Hondori* shopping street .

◆ At the door: High school students and above-¥2,500

Junior high and elementary school students-¥500

INQUIRIES: *Hatsukaichi Kanko Kyokai* (Tourist Association), Yoshiwa Branch 0829-77-2404

Please feel free to contact the International Exchange Lounge at 082-247-9715.

E-mail: golounge@pcf.city.hiroshima.jp

March 2019

Municipal Facilities



Facilities

(Address / Telephone / Open Hours / Closed / Admission Fee / URL)

Admission is generally allowed up to 30 min. prior to closing.

Hiroshima City Forest Park & Insectarium

(10173 Fujigamaru, Fukuda-cho, Higashi-ku 732-0036 / Forest Park: 899-8241, Insectarium: 899-8964 / Forest Park: 9:00 am - 4:30 pm;

Insectarium: 9:00 am - 4:30 pm / Closed: Forest Park - Wednesdays; Insectarium - Wednesdays / Admission Fees for the Insectarium: Adults-¥510, Seniors & high school students-¥170, Junior high & elementary school students-Free (Free admission for high school students on Saturdays (except on national holidays and during school holidays)) / Forest Park: <http://www.daiichib-shitei.com/forest/> Insectarium: <http://www.hiro-kon.jp/>)

❖ The Forest Park & Insectarium have been closed temporarily due to the heavy rain disaster in western Japan in July 2018.

❖ Some Insectarium events will be held at the 5-Days Children's Museum of Culture and Science. Please see the Children's Museum section of this newsletter for more information.

The Hiroshima Botanical Garden

(3-495 Kurashige, Saeki-ku 731-5156 / 922-3600 / 9:00 am - 4:30 pm / Closed on Fridays / Adults-¥510, Seniors & high school students-¥170, Junior high and elementary school students-Free (Free admission for high school students on Saturdays (except on national holidays and during school holidays)) / <http://www.hiroshima-bot.jp/>)

<Exhibitions> Exhibitions will close at 3:30 pm on their last day.

Tenji Shiryo-kan

🌸 Floral Decorations / Saturday, March 2 - Thursday, March 7

🌸 The World of Plant-based Dyes / Saturday, March 9 - Thursday, April 4

Tenji Onshitsu (Greenhouse Exhibitions)

🌸 Geraniums / Saturday, March 9 - Wednesday, April 17

<Events>

🌸 **Sakura (Cherry Blossom) Festival** / Saturdays and Sundays between March 30 and April 21

🌸 **An Evening of Cherry Blossoms** / March 30 (Sat.) & 31 (Sun.); April 6 (Sat.) & 7 (Sun.) / 4:30 pm - 9:00 pm ✨ Entrance will be close at 8:30 pm.

☺ Night viewing of illuminated cherry blossoms and concerts.

<Gardening Lessons>

🌸 **Junior Project** / Sundays, March 10 & April 14 / ① 11:00 am - noon ② 1:30 pm - 2:30 pm

🌸 **How to Grow Tropical Flowers** / Saturday, March 16 / 1:30 pm - 2:30 pm

🌸 **Lecture on Plant-based Dyes** / Sunday, March 17 /

1:30 pm - 3:30 pm

🌸 **How to Grow Orchids** / Thursday, March 21 / 1:30 pm - 2:30 pm

🌸 **How to Grow Shiitake (mushrooms)** / Thursday, March 21 / 10:00 am - 3:00 pm /

✨ The lesson will finish when the wood which the *shiitake* grows on runs out.

✨ Please bring cotton work gloves with you and wear with appropriate clothing.

🌸 **Photo Lesson: Sakura** / Saturdays, April 6 & 13 / 1:00 pm - 3:00 pm

✨ Please bring a camera (film or digital) and a tripod (if you have one) with you.

🌸 **Spring Gardening Lesson: Hanging Basket** / Saturday, April 20 / 1:30 pm - 3:30 pm / Fee: ¥2,000 for materials

To APPLY: Send an *ofuku-hagaki* (return postcard) with your name, address and

telephone number and the event name ^{はる}春のガ

ーデニング講座 ("Haru no gardening kouza")

to the Botanical Garden by Thursday, April 11. 20 people will be selected at random from a list of names.

5-Days Children's Museum of Culture and Science

(5-83 Motomachi, Naka-ku 730-0011 / 222-5346 / 9:00 am - 5:00 pm / Closed on March 4 - 8, 11, 18, 22 & 25 / Admission fee is required for the planetarium (see below).

/ <http://www.pyonta.city.hiroshima.jp/>)

★ Planetarium ★

👉 Admission Fee for Planetarium:

Adults-¥510, Seniors & high school students-¥250, Junior high & elementary school

Please feel free to contact the International Exchange Lounge at 082-247-9715.

E-mail: golounge@pcf.city.hiroshima.jp

March 2019

students-Free ✧ Free admission for high school students on Saturdays (except on most national holidays and during school holidays). Admission fee for adults is ¥250 on the second Saturday of every month (except on most national holidays and during school holidays).

☆ **Planetarium Shows** / Adults-¥510, Seniors & high school students-¥250

❶ **Africa Pole Pole: Hear African stories of how the sky came to be so bustling, set to African music (45 min.)** / Until Sunday, March 3

Time Schedule

✧ Weekdays: 11:00 am
✧ Sat., Sun., & national holidays:
① 10:00 am ② 3:00 pm

❷ **Earth Symphony (45 min.)** / Until Monday, July 15

Time Schedule

✧ Weekdays (except weekdays between Mar. 26 and Apr. 5): 2:00 pm
✧ Sat., Sun., national holidays & Mar. 26 - Apr. 5: ① 11:00 am ② 2:00 pm

❸ **Looking for the Stolen Constellations (45 min.)** / Saturday, March 9 - Sunday, September 8

Time Schedule

✧ Weekdays (except weekdays between Mar. 26 and Apr. 5): 11:00 am
✧ Sat., Sun., national holidays & Mar. 26 - Apr. 5: ① 10:00 am ② 3:00 pm

☆ **360° Full Dome Show: Dinosaurs (35 min.)** / Until Friday, April 26 / Adults-¥510, Seniors & high school students-¥250

Time Schedule

✧ Weekdays (except weekdays between Mar. 26 and Apr. 5): 3:00 pm
✧ Sat., Sun., national holidays & Mar. 26 - Apr. 5: 1:00 pm

☆ **Refretarium**

✧ This is a program for refreshing your mind and body during lunch time while watching the starry sky and listening to music. Although the main target of this program is adults, anyone who wishes to rejuvenate themselves is welcome.

❶ **2018-19 Winter Program** / Until Friday, March 15

❷ **2019 Spring Program** / Saturday, March 16 - Friday, June 7

Time Schedule

✧ Weekdays (except weekdays between Mar. 26 and Apr. 5): 1:00 pm
✧ Sat., Sun., national holidays & Mar. 26 - Apr. 5: 4:00 pm

Admission Fee

High school students and above-¥200

☆ **Starry Sky Tour: Tonight's Starry Sky & Japanese Space Probes** / Until Sunday, April 14 / 4:00 pm - 4:50 pm / Adults-¥510, Seniors & high school students-¥250

★ **Events** ★

☆ **Events co-organized with Children's Museum and Insectarium: Touch Insects!** / Sunday, March 17 / 3F, *Sousaku-shitsu*

☆ **Theater for Children** / Sunday, March 3 /
① Noon - 1:00 pm ② 2:30 pm - 3:30 pm

✧ Doors will open at 11:40 am for ① and at 2:10 pm for ②. / 1F, Apollo Hall (250 seats) / Free admission

☆ **Craft Workshops** / March 3 (Sun.), 10 (Sun.) & 21 (Thurs.) / 1:00 pm - 3:30 pm / For children under elementary school entry age, elementary school students (1st - 3rd graders) and their guardians / 3F, *Kosaku-shitsu* (Craft Room) / Fee: ¥30 for materials

✧ The content of each workshop is different. For more information, please contact the museum.

☆ **Science Show: Balloons** / Saturday, March 23 /
① 1:30 pm - 2:00 pm ② 3:00 pm - 3:30 pm / 1F, Science Studio / Fee: Free

⊛ **The events listed below require advance applications.**

To APPLY: Send an *ofuku-hagaki* (return postcard) to the museum, postmarked no later than each event's application deadline, with the following information: applicants' names, addresses, a telephone number, school year and the event name and time of the event you wish to attend.

Science Workshop

◆ **Make a Distribution Map of Dandelions around Hiroshima Castle** / **タンポポ だいそうさもう 大捜査網** (*"Tanpopo dai-sousamou"*) / Sunday, April 7 / 9:30 am - 12:30 pm / For elementary school students / Fee: ¥200 / Closing date for applications: Sunday, March 24 ✧ 20 people will be selected at random from a list of names.

Craft Workshops

◆ **Kaleidoscope** / **万華鏡 づくり** (*"Mangekyou zukuri"*) / Saturday, March 23 / ① 9:30 am - noon ② 1:30 pm - 4:00 pm / For elementary school students / Fee: ¥500 / Closing date for applications: Saturday, March 9
✧ 20 people will be selected at random from a list of names for each time slot.


◆ **Craft Workshop Using a Motor** / **公開 発明 教室 : モーターを使った工作** (*"Kokai hatsumei kyoushitsu: motor wo tsukatta kosaku"*) / Saturday, April 13 / 1:30 pm - 4:00 pm

Please feel free to contact the International Exchange Lounge at 082-247-9715.

E-mail: golounge@pcf.city.hiroshima.jp


March 2019

pm / For elementary (4th - 6th graders) and junior high school students / Fee: Free / Closing date for applications: Saturday, March 30 ✧ 24 people will be selected at random from a list of names.




 **Hiroshima City Asa Zoological Park**
(Asa-cho Dobutsuen, Asakita-ku 731-3355 / 838-1111 / 9:00 am - 4:30 pm / Closed on Thursdays (except March 21) / Adults-¥510, Seniors & high school students- ¥170, Junior high & elementary school students-Free / <http://www.asazoo.jp/>)

-  **Asa Zoo & "Miyaji-marine" (Miyajima Public Aquarium) Collaboration Event 2018: Stamp Rally** / Until Sunday, March 31
-  **Backyard Guide Tour** / Saturdays, March 2, 9, 16, 23 & 30 / ① 11:00 am (except the 30th) ② 1:30 pm / Please gather near the entrance at 9:00 am on each activity day. The first 10 - 40 people can participate. The number of participants will differ depending on where you visit. The tours will explore a different place on each trip.
-  **Sketching Event: Let's Draw Animals and a Fire Engine** / Sunday, March 10 / 9:30 am - 1:00 pm ✧ Applications will be accepted from 9:00 am to 11:30 am at the main entrance on the day. ✧ Drawing paper will be given to each person. Please bring other painting tools with you. ✧ This event will be postponed until Sunday, March 17 if it rains.
-  **Animal Balloon Art Performance** / Thursday, March 21 & Sunday, March 24 / ① 11:30 am - noon ② 2:30 pm - 3:00 pm / *Yagai* Stage
-  **Feeding Animals: Goats & Sheep** / Saturdays, March 23 & 30 / From 1:00 pm onward ✧ Tickets will be distributed from 12:30 pm for the first 100 people on the event day.
-  **Giant Salamander Facility Tour** / Saturday, March 30 / 11:00 am - 11:45 am ✧ Participation tickets will be distributed from 9:00 am at the main entrance until 20 spots are filled.

 **Numaji Transportation Museum (Hiroshima City Transportation Museum)**
(2-12-2 Chorakuji, Asaminami-ku 731-0143 / 878-6211 / 9:00 am - 5:00 pm / Closed on March 4 - 7, 11, 18 & 25 / Adults-¥510, Seniors & high school students-¥250, Junior high school students and under-Free / <http://www.vehicle.city.hiroshima.jp>)

 **Spring Exhibition: Construction Machinery** / Friday, March 8 - Monday, May 6

★ **Special Exhibition-Related Events** ★

- ① **Sit in a mini excavator and take photos** /
 - ◆ **KOBELCO SK008** / Saturdays, Sundays & national holidays during the event period / 9:00 am - 5:00 pm / 2F, *Tokubetsu tenji-shitsu*
 - ◆ **KOMATSU PC01** / Thursday, March 21 / ① 10:30 am - noon ② 1:30 pm - 3:00 pm / 1F, Entrance Hall
 - ◆ **KOBELCO SK125SR** / Saturday, March 30 / ① 10:30 am - noon ② 1:30 pm - 3:00 pm / Museum Entrance
 ✧ The engines will not be started.
- ② **Vehicle Land: Playing with Toy Cars** / Saturday, March 16 & Sunday, March 17 / 1:00 pm - 4:00 pm / 1F, *Tamokuteki Hall* / Fee: Free
- ③ **Picture Book Reading** / Sunday, March 17 / 11:00 am - 11:30 am / 1F, *Tamokuteki Hall* / Fee: Free
- ④ **Safety License for Children - Answer a quiz about the rules of the road and get "Safety license"** . / Saturday, March 23 / ① 10:00 am - noon ② 1:30 pm - 3:30 pm / 1F, Entrance Hall / Participation fee: Free
- ⑤ **KOBELCO Itsukaichi Factory Tour** / Wednesday, March 27 / 9:30 am - 12:30 pm / KOBELCO Construction Machinery, Itsukaichi Factory / For elementary (4th - 6th graders) and junior high school students ✧ Elementary school students should be accompanied by their guardians. / Meeting place: JR Itsukaichi Station, south exit / Participation fee: Free
To APPLY: Send an *ofuku-hagaki* (return postcard) with applicant's name, address, telephone number, grade and the event name がつ にちこうじょうけんがくかい **3月27日 工場見学会** ("Kojo kengaku-kai on March 27") to the museum by Wednesday, March 13. 50 people will be selected at random from a list of names.
- ⑥ **Children's Craft Workshop: Bulldozer** / Sunday, March 24 / 1:00 pm - 3:30 pm ✧ Numbered tickets will be distributed from 12:30 pm. / For preschoolers, elementary school students and their guardians / 1F, Craft Room / Fee: ¥50 for materials ✧ Participation limited to the first 100 groups
-  **Museum Spring Festival** / March 21 (Thurs.), 23 (Sat.) & 24 (Sun.)
-  **Stage Shows: Puppet Show** / Thursday, March 21 / ① 1:30 pm - 2:15 pm ② 3:00 pm - 3:45 pm / 1F, *Tamokuteki Hall* / Fee: Free
-  **Show : the Latest Robots Developed by Kyushu Institute of Technology** / Saturday, March 23 & Sunday, March 24 / ① 10:15 am -

Please feel free to contact the International Exchange Lounge at 082-247-9715.

E-mail: golounge@pcf.city.hiroshima.jp

March 2019

10:45 am ② 12:45 pm - 1:15 pm ③ 2:15 pm
- 2:45 pm / 1F, *Tamokuteki* Hall / Fee: Free

📖 **Science Show: Dr. Yuki's Science Show** /
Sunday, March 10 / ① 11:30 am ② 1:30 pm
③ 2:30 pm / 1F, *Tamokuteki* Hall / Fee: Free

📖 **Exhibition of a Streetcar Exposed to the A-Bomb** / Saturday, March 16 / ① 11:00 am -
noon ② 1:30 pm - 3:00 pm / *Okugai Hiroba*
(outdoor open space) / Fee: Free ✧ This will
be canceled if the weather is bad.

📖 **Children's Craft Workshops** / March 3 (Sun.),
10 (Sun.), 17 (Sun.), 21 (Thurs.), 23 (Sat.) &
24 (Sun.) / 1:00 pm - 3:30 pm ✧ Numbered
tickets will be distributed from 12:30 pm. /
For preschoolers, elementary school students
and their guardians / 1F, Craft Room / Fee:
¥50 for materials ✧ Participation limited to
the first 100 groups

📖 **Hiroshima City Ebayama Museum of Meteorology**

(1-40-1 Eba-minami, Naka-ku 730-0835 /
231-0177 / 9:00 am - 5:00 pm / Closed on
Mondays & March 22 / Adults-¥100, Seniors &
high school students-¥50, Junior high &
elementary school students-Free (Free
admission for high school students on Saturdays
except during school holidays)
/ <http://www.ebayama.jp/>)

✧ **Special Exhibition: Ball Science** / Until
Sunday, March 17

✧ **Science Shows** / ① 1:30 pm - 2:00 pm
② 3:00 pm - 3:30 pm

◆ **Balloons** / March 2 (Sat.), 3 (Sun.) & 10
(Sun.)

◆ **Amazing Experiments** / March 16 (Sat.), 17
(Sun.), 21 (Thurs.), 23 (Sat.), 24 (Sun.) & 30
(Sat.)

✧ **Science Workshops** / 1:00 pm - 3:30 pm / For
junior high school students and under ✧ Entry
can be purchased from 10:00 am on the day, up
to 50 people.

◆ **Kaleidoscope** / Saturday, March 9 / Fee:
¥170 for materials

◆ **Bead Strap** / Sunday, March 31 / Fee: ¥160
for materials

📖 **Hiroshima City Museum of History and Traditional Crafts**

(2-6-20 Ujina-miyuki, Minami-ku 734-0015 / 253-
6771 / 9:00 am - 5:00 pm / Closed on Mondays &
March 22 / Adults-¥100, Seniors & high school
students-¥50, Junior high school students and
under-Free

/ <http://www.cf.city.hiroshima.jp/kyodo/>)

📖 **Special Exhibitions: Artifacts Excavated in Hiroshima: From 20,000 years ago to the Meiji Period (1686-1912)** / Friday, March 1 -
Monday, May 6

📖 **Workshops**

◆ **Make a *Bota-mochi*, a rice cake covered with *anko*, bean jam** / Thursday, March 21 /
1:00 pm - 3:00 pm / Elementary school
students / Fee: ¥200 (Admission fee for the
museum is also required.)

✧ Applications will be accepted by phone or
fax between March 1 and 5. 20 people will be
selected at random from a list of names.

◆ **Make a *Wagashi* (Japanese-style confectionary)** / Saturday, April 20 / 1:00 pm -
3:00 pm / Elementary school students and
their guardians / Fee: ¥300 per person
(Admission fee for the museum is also
required.)

✧ Applications will be accepted by phone or
fax between April 2 and 5. 10 groups will be
selected at random from a list of names.

◆ **Make a *Kashiwamochi* (a rice cake stuffed with sweet bean paste and wrapped in an oak leaf)** / Saturday, April 27 / 1:00 pm - 3:00 pm /
Elementary school students / Fee: ¥100

✧ Applications will be accepted by phone or
fax between April 2 and 5. 20 people will be
selected at random from a list of names.

📖 **Hiroshima City Cinematographic and Audio-Visual Library**

(3-1 Motomachi, Naka-ku 730-0011 / 223-3525 /
10:00 am - 8:00 pm (Tuesday - Saturday), 10:00
am - 5:00 pm (Sunday, national holidays &
August 6) / Closed on Mondays & March 22 /
35mm Film Showings ⇒ Adults-¥510, Seniors &
High school students-¥250, Junior high school
students and under-Free; **Other Film Showings**
⇒ Adults-¥380, Seniors & high school students-
¥180, Junior high school students and under-
Free, Admission free for foreign students (Please
show your student ID or the Hiroshima
International Center Complimentary Pass.) /
<http://www.cf.city.hiroshima.jp/eizou/>)

📖 **March Special Showings of Masterpieces of Japanese Film: Seijun Suzuki (1923-2017), a Film Director** (Screened in Japanese only)

📖 **Admission Fee: Adults-¥510, Seniors (65 years old and above) & high school students-¥250, Junior high & elementary school students-Free**
★ Saturdays, March 2 & 9: Free admission for high school students

Please feel free to contact the International Exchange Lounge at 082-247-9715.

E-mail: golounge@pcf.city.hiroshima.jp

March 2019

- **Friday, March 1** / ① 10:30 am ② 2:00 pm
③ 6:30 pm
Tantei jimusho 23 Kutabare akuto domo / 探偵事務所 23 くたばれ悪党ども (1963, Nikkatsu, 88 min., color, 35 mm film)
 - **Saturday, March 2** / ① 10:30 am ② 2:00 pm
③ 6:00 pm
Yaju no seishun / 野獣の青春 (1963, Nikkatsu, 91 min., color, 35 mm film)
 - **Sunday, March 3** / ① 10:30 am ② 2:00 pm
Kanto mushuku / 関東無宿 (1963, Nikkatsu, 92 min., color, 35 mm film)
 - **Thursday, March 7** / ① 10:30 am ② 2:00 pm
③ 6:30 pm
Akutaro / 悪太郎 (1963, Nikkatsu, 95 min., B&W, 35 mm film)
 - **Friday, March 8** / ① 10:30 am ② 2:00 pm
③ 6:30 pm
Irezumi ichidai / 刺青一代 (1965, Nikkatsu, 86 min., color, 35 mm film)
 - **Saturday, March 9** / ① 10:30 am ② 2:00 pm
③ 6:00 pm
Tokyo nagaremono / 東京流れ者 (1966, Nikkatsu, 82 min., color, 35 mm film)
 - **Wednesday, March 13** / ① 10:30 am ② 2:00 pm
③ 6:30 pm
Kawachi Karumen / 河内カルメン (1966, Nikkatsu, 89 min., B&W, 35 mm film)
 - **Thursday, March 14** / ① 10:30 am ② 2:00 pm
③ 6:30 pm
Kenka ereji / けんかえれじい (1966, Nikkatsu, 86 min., B&W, 35 mm film)
 - **Friday, March 15** / ① 10:30 am ② 2:00 pm
③ 6:30 pm
Koroshi no rakuin / 殺しの烙印 (1967, Nikkatsu, 91 min., B&W, 35 mm film)
 - **Wednesday, March 20** / ① 10:30 am ② 2:00 pm
③ 6:00 pm
Tsgoineruwaizen / ツイゴインエルワイゼン (1980, Cinema Plaset, 144 min., color, 35 mm film)
 - **Thursday, March 21** / ① 10:30 am ② 2:00 pm
Kageroza / 陽炎座 (1981, Cinema Plaset, 140 min., color, 35 mm film)
- 🎬 **YAMAGATA in Hiroshima - Special Selection from YIDFF* 2017** (Screened in original language with Japanese & English subtitles)
*YIDFF: YAMAGATA International Documentary Film Festival
- 👏 **Admission Fee:** Adults-¥380, Seniors (65 years old and above) & high school students-¥180, Junior high & elementary school students-Free
- **Saturday, March 23** / ① 2:00 pm ② 6:00 pm
A Memory in Khaki (2016, Qatar, 105 min., color, Blu-ray, Japanese & English subtitles) / Director: Alfoz Tanjour ❖ The YIDFF 2017 The Mayor's Prize

- **Sunday, March 24** / ① 10:30 am ② 2:00 pm
Lone Existence (2016, China, 77 min., color, Blu-ray, Japanese & English subtitles) / Director: Sha Qing ❖ The YIDFF 2017 International Competition Award of Excellence
- **Wednesday, March 27** / ① 2:00 pm ② 6:00 pm
Calabria (2016, Switzerland, 117 min., color, B&W, Blu-ray, Japanese & English subtitles) / Director: Pierre-François Sauter ❖ The YIDFF 2017 International Competition
- **Thursday, March 28** / ① 2:00 pm ② 6:30 pm
Donkeyote (2017, Spain, Germany, UK, 86 min., color, Blu-ray, Japanese & English subtitles) / Director: Chico Pereira ❖ The YIDFF 2017 International Competition
- **Friday, March 29** / ① 2:00 pm ② 6:00 pm
A House in Ninh Hoa (2016, Germany, 108 min., color, Blu-ray, Japanese & English subtitles) / Director: Philip Widmann ❖ The YIDFF 2017 International Competition
- **Saturday, March 30** / ① 10:30 am ② 4:00 pm
Wake (Subic) (2015, USA, The Philippines, 267 min., color, Blu-ray, Japanese & English subtitles) / Director: John Gianvito ❖ The YIDFF 2017 International Competition
- **Sunday, March 31** / ① 10:30 am ② 2:00 pm
A Strange Love Affair with Ego (2015, The Netherlands, 91 min., color, Blu-ray, Japanese & English subtitles) / Director: Ester Gould ❖ The YIDFF 2017 International Competition

🎬 **Indie Films from Hiroshima** (Screened in Japanese only)

DATE: Saturday, March 16 & Sunday, March 17
TIME: 1:00 pm - 5:00 pm
ADMISSION: Free



Please feel free to contact the International Exchange Lounge at 082-247-9715.

E-mail: golounge@pcf.city.hiroshima.jp

March 2019

Library News

MARCH 2019

Recommended Books for This Month

Cinderella Takes the Stage

By Tessa Roehl

Illustrated by the Disney Storybook Art Team (Random House, c2017)

Belle's Discovery

By Tessa Roehl

Illustrated by the Disney Storybook Art Team (Random House, c2017)

Life After Life

By Kate Atkinson (Back Bay Books, 2014)

The Little Sister

By Raymond Chandler (Vintage Books, 1988)

The Storyteller

By Jody Picoult

(Emily Bestler Books / Washington Square Press, 2013)

What other books should we add to our collection? Your suggestions are always welcome!



Library Corner

LOCATION: International Conference Center Hiroshima (ICCH), 1st Floor

T E L L : (082)247-9715

H O U R S : 9:00 am - 7:00 pm (From April 1 to September 30)

9:00 am - 6:00 pm (From October 1 to March 31)

C L O S E D : December 29 through January 3

BOOK LOAN POLICY:

Up to three books may be borrowed for a two-week period. To obtain an ICCH Library Card, you need to bring identification which has your address, and for foreign residents, your period of stay in Japan. (A Japanese driver's license, student identification card, passport or resident card is an acceptable form of identification.)



Please feel free to contact the International Exchange Lounge at 082-247-9715.

E-mail: golounge@pcf.city.hiroshima.jp

March 2019

図書だより

ねん がつ
2019年 3月

こんげつ としよ
今月 のおすすめ 図書

こくさいれいきゅうそうかんし
エンジェルフライト:国際霊柩送還士

ささ りょうこ ちよ しゅうえいしや ねん
佐々 涼子 / 著 (集英社, 2012年)

やく ほんやく ぶんかろん
訳せないもの:翻訳にからめた文化論

さとう ひろあき ちよ しゅつぽんかい ねん
佐藤 紘彰 / 著 (サイマル出版会, 1996年)

きねんび
サラダ記念日

たわら まち ちよ かわでしよぼうしんしや ねん
俵 万智 / 著 (河出書房新社, 1987年)

ごだん
誤断

どうぼ しゅんいち ちよ ちゅうおうこうろんしんしや ねん
堂場 瞬一 / 著 (中央公論新社, 2017年)

リバース

みなと ちよ こうだんしや ねん
湊 かなえ / 著 (講談社, 2017年)

ほん のリクエストなど 図書 コーナーに 関するご要望 はスタッフまでお気軽にお申し出 くだ
さい。



図書コーナー

ば しょ ひろしまこくさいかいまじょう こくさいこうりゆう へいわきねんこうえんない
場 所: 広島国際会議場 1F・国際交流 ラウンジ (平和記念公園内)
TEL (082)247-9715

かいかんじかん みなと ちよ ねん がつ たち がつ にち
開館時間: 9:00 am - 7:00 pm (4月1日から9月30日まで)

9:00 am - 6:00 pm (10月1日から3月31日まで)

きゅうかんび ねん がつ にち がつ か
休館日: 12月29日~1月3日

かし だし としよ しゅうかん きげん かい さつ か
貸 出: 図書は2週間を期限として、1回3冊まで借りることができます。

はじ りよう さい じゅうしよ ざいりゅうきかん がいこくじん かた しょうめい うんてん
初めて利用する際には、住所や在留期間(外国人の方)を証明するもの(運転



Please feel free to contact the International Exchange Lounge at 082-247-9715.

E-mail: golounge@pcf.city.hiroshima.jp

March 2019

Assisting with International Cooperation with Used Stamps & PET Bottle Caps

The International Exchange Lounge collects used stamps to assist international cooperation activities. Through the volunteer groups, JOCS*, the collected stamps are sold to collectors to raise money. With the profit, items such as milk and medicine are purchased and doctors as well as nurses are dispatched throughout Asia and other continents. We also collect PET bottle caps in order to support the "Ecocap Action". The sales profits obtained by recycling caps are donated to the Japan Committee "Vaccines for the World's Children" (JCV).

*JOCS: Japan Overseas Christian Medical Cooperative Service

HOW TO COLLECT:

▣ **Stamps** ⇒ When you cut stamps from envelopes, please leave 5 mm of paper around them. It is not necessary to remove them from the envelope. Torn or folded stamps cannot be accepted.

▣ **PET Bottle Caps** ⇒ Only PET bottle caps for drinks or mineral water are accepted. Please wash the caps and tear off the sticker if it has one. This is in order to avoid damaging the recycling machines. Things such as metal caps and pull-top tabs cannot be accepted.

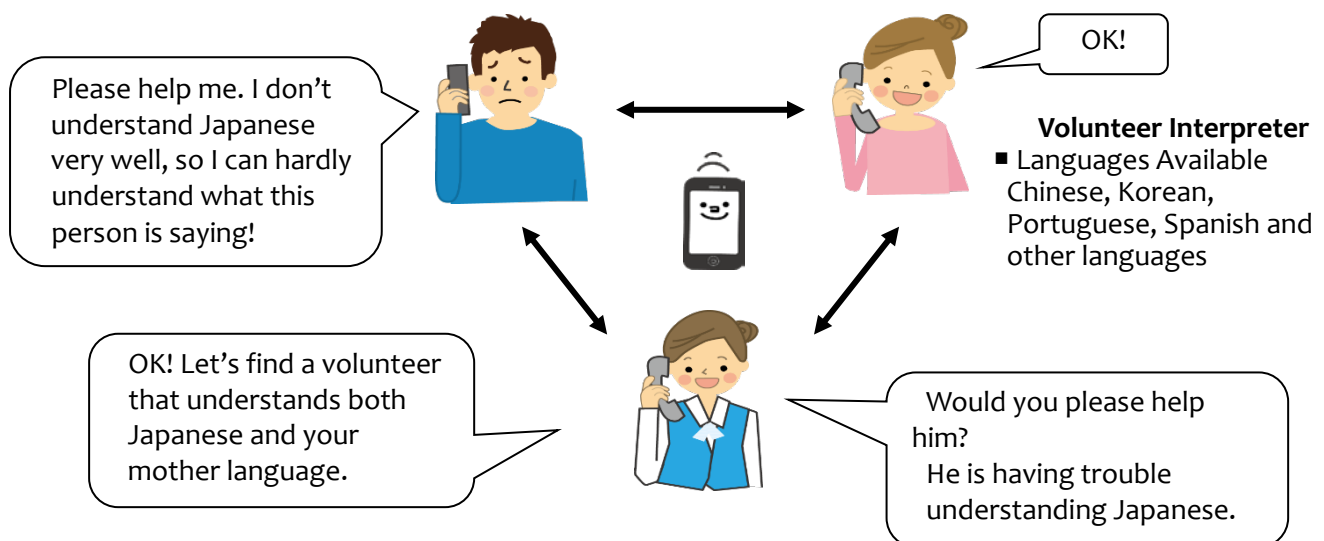
Trio-Phone Service (Multilingual Interpretation over the Telephone)



What is Trio-Phone ?

Trio-Phone Service allows three people to have a conversation at the same time through the telephone. If you are having difficulties communicating in Japanese, call the International Exchange Lounge (082-247-9715).

A volunteer interpreter will help you through the Trio-Phone Service!



For further information, please ask the staff at the International Exchange Lounge.

Please feel free to contact the International Exchange Lounge at 082-247-9715.

E-mail: golounge@pcf.city.hiroshima.jp

Garbage Disposal Information

Separate garbage properly and take it to the collection site by 8:30 am on the designated day. Please do NOT take garbage to the site on the night before. Garbage collection days vary depending on where you live and the category of the refuse. For further details, consult your local ward office or your neighbors to be sure of the proper disposal method. “Hiroshima 8”, a handbook on how to separate garbage, and “Hiroshima City Garbage Disposal Guidelines”, a garbage chart with schedules of garbage collection days, are available at ward offices, branch offices and community halls. The Handbook and Guidelines are translated into English, Spanish, Portuguese, Chinese and Korean. These are also available at the International Exchange Lounge (International Conference Center Hiroshima), so please ask the staff if you need them.



HIRO CLUB NEWS is published monthly and provides essential and entertaining information about life in Hiroshima City. It is available in print at the International Exchange Lounge, and online at our website: <http://www.pcf.city.hiroshima.jp/ircd/english/hiroclubnews/>

Selected information is also available in other languages including Chinese, Portuguese and Spanish.

HIRO CLUB NEWS は広島的生活情報やイベント等の情報を掲載している月刊情報誌です。国際交流ラウンジにて配布しています。(公財)広島平和文化センター国際交流・協力課のホームページにも掲載しています。英語版の情報の一部を抜粋した中国語・ポルトガル語・スペイン語版も作成しています。国際交流・協力課 HP: <http://www.pcf.city.hiroshima.jp/ircd/english/hiroclubnews/>



Edited and published by the Hiroshima Peace Culture Foundation,
International Affairs Department, International Relations and Cooperation Division

Tel: (082) 242-8879, Fax: (082) 242-7452, E-mail: internat@pcf.city.hiroshima.jp

International Exchange Lounge

Tel: (082) 247-9715, E-mail: golounge@pcf.city.hiroshima.jp

HP: <http://www.pcf.city.hiroshima.jp/ircd/english/>

編集・発行：公益財団法人広島平和文化センター国際部国際交流・協力課
国際交流ラウンジ

〒730-0811 広島市中区中島町 1 番 5 号