

Seasonal Event Information

July 2019

Ⓔ Event schedules are subject to change. Please contact event organizers before you go.

Events Held in Hiroshima City



The 6th, 16th & 26th of Every Month

Talk with A-bomb Survivors 「6」のつく日 ひ かた べ はな 語り部さんとお話ししよう!

TIME: 11:00 am – 5:00 pm Story telling: • 1:00 pm , 3:00 pm

PLACE: Social Book Café Hachidori-sha, Dobashi-cho, Naka-ku

DIRECTIONS: 5 minutes' walk from Dobashi-cho streetcar stop.

FEE: Free admission ² You need to order at least one drink per person.

ENQUIRIES: Social Book Café Hachidorisha 082-576-4368 E-mail: hachidorisha@gmail.com

Ⓒ This is not like a lecture, but a casual talk with A-bomb survivors. You can talk with A-bomb survivors in English on the 6th of every month.

Ⓔ Social Book Café Hachidorisha Ⓔ

OPEN HOURS: Wednesday, Thursday & Friday: 3:00 pm – 11:00 pm

Saturday, Sunday, national holidays: 11:00 am – midnight

The 6th, the 16th & the 26th of every month: Open from 11:00am

CLOSED: Mondays & Tuesdays

Sunday, June 16 – Sunday, July 7

Hydrangea Festival at Kannon-ji Temple かんのんじ まつ 観音寺 あじさい祭り

TIME: 8:30 am – 5:00 pm ² From 11:00 am onwards on June 16

VENUE: Kannon-ji Temple, Saeki-ku

DIRECTIONS: Get on a bus bound for Higashi-kannondai Danchi from Rakurakuen streetcar stop or JR Itsukaichi station (JR Sanyo Line) and get off at Kannondai Iriguchi. 5 minutes' walk from the stop.

ENQUIRIES: Kannon-ji Temple 082-924-1340

Ⓒ 5,000 hydrangeas of 400 varieties will be in bloom from the middle of June to the beginning of July at Kannon-ji Temple.

Ⓒ On June 16, there will be an opening to the public of a *nehanzu* (a picture of Buddha entering Nirvana). An exhibition of hydrangea and a wind chime festival will also be held during the event period.

Wednesdays between April 3 and December 25, 2019

√ July 3, 10, 17, 24 & 31; August 7, 14, 21 & 28

Hiroshima Kagura ひろしまけんみんぶんか ひろしまがくら ていきこうえん 広島県民文化センター「広島神楽」定期公演

TIME: 7:00 pm – 8:45 pm (Doors will open at 6:00 pm.)

VENUE: Hiroshima Prefectural Citizens' Cultural Center (*Hiroshima Kenmin Bunka Center*), Otemachi, Naka-ku (located near Hondori shopping street)

DIRECTIONS: 3 minutes' walk from either Kamiya-cho-nishi or Hondori streetcar stop.

TICKETS: ¥1,200 ² Seats cannot be reserved.

² Tickets will be sold from 5:40 pm on the date of each performance at the Center. Numbered tickets needed to buy performance tickets will be distributed from 4:30 pm at the Center (1F, lobby). There are no advance tickets.

ENQUIRIES: *Hiroshima Kenmin Bunka Center* 082-245-2311

Please feel free to contact the International Exchange Lounge at 082-247-9715.

E-mail: golounge@pcf.city.hiroshima.jp

July 2019

July 6 (Sat.), 20 (Sat.) & 27 (Sat.)**An Evening of Kagura** よ かくらこうえん
夜 神楽 公演**TIME:** ⑧ Kagura Performance: 7:00 pm – 7:45 pm (The venue will open at 6:30 pm.)

⑧ Q&A and Photo Session: From 7:45 pm onwards

VENUE: Hiroshima Prefectural Art Museum Auditorium, Kami-nobori-cho, Naka-ku**DIRECTIONS:** Get off at Shukkeien-mae streetcar stop.**TICKETS:** Adults: ¥1,000 Students: ¥500 For groups of 10 or more: ¥800

② Admission free for children 3 and under (they should be seated on a parent or guardian's lap.)

② Tickets will be sold from 6:30 pm on the day of performance at the venue. There are no advance tickets.

ENQUIRIES: Hiroshima Interpreter & Guide Association080-3731-4804 (10:00 am – 5:00 pm) <http://www.hiroshima-kagura.com>**Sundays, July 7 & 21****Hiroshima Minato Marché** ひろしまみなとマルシェ**TIME:** 8:00 am – 2:00 pm**VENUE:** Open space between East and West Terminals of Hiroshima Port (Minami-ku)**DIRECTIONS:** Get off at Hiroshima Port streetcar stop.**ENQUIRIES:** Hiroshima Minato Marché Office 082-255-6646

© You can buy and taste locally-grown fresh vegetables and other food products at the market.

Sunday, July 7**Tanabata (star festival) Tea Ceremony** たなばたちゃかい
七夕 茶会**TIME:** 9:00 am – 3:00 pm**VENUE:** Shukkeien Garden**DIRECTIONS:** 5 minutes' walk from Shukkeien-mae streetcar stop (Hiroden Hakushima Line).**FEE:** ¥700 for the tea ceremony

② Admission fee for the garden (below) is also required.

Adults-¥260, University & high school students-¥150
Junior high & elementary school students- ¥100

ENQUIRIES: Shukkeien Garden 082-221-3620

© Tanabata is a star festival usually held on July 7 each year.

Friday, July 12 – Saturday, July 27**Wearing Yukata and Making Matcha (green tea) at Shukkeien Garden**ゆかたすがた にほんていえん まんきつ
浴衣 姿 で 日本庭園 を 満喫 してみませんか？

⑥ Reservations are NOT required. English-speaking staff will help you.

TIME: 1:00 pm – 6:00 pm ② Reception will be closed at 4:30 pm.**VENUE:** Shukkeien Garden**DIRECTIONS:** 5 minutes' walk from Shukkeien-mae streetcar stop (Hiroden Hakushima Line).**FEE:** ⑧ ¥2,000 for yukata wearing ⑧ ¥1,000 for matcha making

② Admission fee for the garden (below) is also required.

Adults-¥260, University & high school students-¥150
Junior high & elementary school students- ¥100

ENQUIRIES: Shukkeien Garden 082-221-3620

© Yukatas for men, women and children will be available.

Tuesday, July 16 & Wednesday, July 17**Sumiyoshisan Festival** すみよしさん**TIME:** No specific starting time. Most people come in the evening.**VENUE:** Sumiyoshi Shrine, Sumiyoshi-cho, Naka-ku

Please feel free to contact the International Exchange Lounge at 082-247-9715.

E-mail: golounge@pcf.city.hiroshima.jp

July 2019



DIRECTIONS: Take the No. 3 bus and get off at Kako-machi.

ENQUIRIES: Sumiyoshi Shrine 082-241-0104

© Fireworks will be set off from 8:00 pm on both days. An ancient style of boat will be in the river and *kagura* performances will also be held.

Saturday, July 20

Hiroshima Minato Hawaiian Marché 2019 ひろしまみなと Hawaiian マルシェ 2019

TIME: 4:00 am – 9:30 pm

VENUE: Zigzag Park, east side of Hiroshima Port Unjina Terminal

DIRECTIONS: Get off at Hiroshima Port streetcar stop.

ENQUIRIES: Hiroshima Minato Hawaiian Marché Executive Committee 090-1330-4410

© This event includes Hawaiian dance, Hawaiian food and more.

Sunday, July 21

Sister and Friendship City Day Event: Journée de Montréal

しまい ゆうこうとし ひきねん
姉妹・友好都市の日記念イベント モントリオールの日 ≪ Montréal is a city in Canada.

TIME: 1:30 pm – 3:45 pm

VENUE: Fukuya Department Store, 6th Floor, Hiroshima Station location, Matsubara-cho, Minami-ku

DIRECTIONS: 3 minutes' walk from JR Hiroshima Station, south exit.

ADMISSION FEE: Free

ENQUIRIES: Hiroshima Peace Culture Foundation, International Relations and Cooperation Division
(Hiroshima Heiwa Bunka Center, Kokusai Kōryū Kyōryoku Ka) 082-242-8879

© This event includes a special performance, sales of Canadian products, an exhibition and more.

Saturday, July 27

2019 Hiroshima Minato Fireworks Festival 2019 広島みなと 夢花火大会

TIME: 8:00 pm – 9:00 pm ® Opening event: 7:00 pm – 7:40 pm

VENUE: Hiroshima Port 10,000 Ton Berth

DIRECTIONS: 15 minutes' walk from Kaigan-dori streetcar stop (Hiroden Ujina line).

ENQUIRIES: Hiroshima *Matsuri* Committee 082-554-1813

© The fireworks will be canceled or postponed if it rains heavily on the 27th.

Saturday, July 27 – Sunday, September 8

teamLab: “Future Park” and “Animals of Flowers, Symbiotic Lives”

チームラボ ≪ 学ぶ! 未来の遊園地と、花と共に生きる動物達

TIME: 10:00 am – 8:00 pm (entry allowed up to 7:30 pm.)

VENUE: NTT CRED Hall, Motomachi CRED Pacela 11F, Motomachi, Naka-ku

DIRECTIONS: • Get off at the *Astramline* Kencho-mae station.

, Get off at Kamiya-cho-higashi or Kamiya-cho-nishi streetcar stop.

TICKETS: Advance: Adults: ¥1,200 Senior & junior high school students: ¥800

Elementary school students – 3 years old: ¥500 2 years old and under: Free

At the door: Adults: ¥1,400 Senior & junior high school students: ¥1,000

Elementary school students – 3 years old: 600 2 years old and under: Free

² Elementary school students and under should be accompanied by parents or guardians.

ENQUIRIES: teamLab website (<https://futurepark.teamlab.art/places/credhiroshima>)

Sunday, July 28 – Saturday, August 10

Exhibition Commemorating the 120-Years of the Emigration from Japan to

Peru にほんじん いじゅう きねんでん
日本人ペルー移住120年記念展

TIME: 1:00 pm – 8:00 pm on July 28 & 10:00 am – 6:00 pm on August 10

Please feel free to contact the International Exchange Lounge at 082-247-9715.

E-mail: golounge@pcf.city.hiroshima.jp

July 2019

VENUE: Hiroshima City International House (*Ryûgakusei Kaikan*), 1F, *Kôryu Lounge*, Nishi-kojin-machi, Minami-ku.

OPEN HOURS: 10:00 am – 8:00 pm

DIRECTIONS: 5 minutes' walk from JR Hiroshima Station, south exit.

ADMISSION FEE: Free

ENQUIRIES: Hiroshima-Peru Association 070-3897-7387 (Kobayashi) or 080-6337-0284 (Oda)

Sundays in August, September & October

Early-morning Opening of Shukkeien Garden

しゅっけいえんそうちょうかいえん
縮景園 早朝 開園

OPEN HOURS: The garden will open early on Sundays in August, September and October.

7:00 am – 6:00 pm in August & September; 7:00 am – 5:00 pm in October

² The garden opens at 9 am on weekdays and Saturdays.

VENUE: Shukkeien Garden

DIRECTIONS: 5 minutes' walk from Shukkeien-mae streetcar stop (Hiroden Hakushima Line).

ADMISSION FEE: Adults-¥260, University & High school students-¥150

Junior high & Elementary school students- ¥100

ENQUIRIES: Shukkeien Garden 082-221-3620

© *Matcha* (green tea) will be served for the first 30 visitors on each day, and an *origami* lesson will also be held.

Thursday, August 1

Memorial Service for the Atomic Bomb Victims at Shukkeien Garden

げんばくぎせいしゃいれいくようしき
原爆犠牲者慰霊供養式

TIME: TBC

VENUE: Shukkeien Garden

DIRECTIONS: 5 minutes' walk from Shukkeien-mae streetcar stop (Hiroden Hakushima Line).

ADMISSION FEE: Adults-¥260, University & high school students-¥150

Junior high & elementary school students-¥100

ENQUIRIES: Shukkeien Garden 082-221-3620

Tuesday, August 6

The 74th Peace Memorial Ceremony

だい かいへいわきねんしきてん
第74回 平和記念式典



TIME: 8:00 am – 8:50 am

VENUE: In front of the Cenotaph for the A-Bomb Victims, Peace Memorial Park

ENQUIRIES: Citizens Activities Promotion Division, Hiroshima City Hall (*Shimin Katsudô Suishin Ka*)

082-504-2103 E-mail: katsudo@city.hiroshima.lg.jp

© On August 6, at 8:15 am, at the sound of a bell rung by one representative from the bereaved families and one representative for young people, a moment of silence is observed for the deceased. At that moment, factory sirens as well as temple and church bells are rung throughout the city, and Hiroshima is deeply wrapped in prayer. On this day, the Mayor of Hiroshima delivers the Peace Declaration, addressed to the whole world, at the ceremony. People recall what happened on August 6, 1945, and in their prayers, ponder the meaning of peace.

✓ Now Accepting Seat Reservations from Non-Japanese Speakers for the 2019 Peace Memorial Ceremony

The International Relations Division of the City of Hiroshima is now accepting applications from non-Japanese speakers for seats and simultaneous interpretation receivers (English Only) for this year's Peace Memorial Ceremony.

<TO APPLY>

Please fill out a Reservation Form and List of Attendees, and send them back to the International Relations Division at kokusai@hiroshima.lg.jp. Please write the names of all participants on the Attendees sheet. You may use a second sheet if you need more space. The International Relations

Please feel free to contact the International Exchange Lounge at 082-247-9715.

E-mail: golounge@pcf.city.hiroshima.jp

July 2019

Division will contact you regarding whether or not your reservation request could be granted. You can download the reservation form and list of attendees from the Hiroshima City website (<http://www.city.hiroshima.lg.jp/www/contents/1555032954537/index.html>).

² Seats are limited. Once the seating quota has been reached, they will stop accepting applications. Last year they received an influx of applications. If you wish to be seated during the Ceremony, please apply early.

Seating is also available in the Unassigned Seating Area, however, as seating is open to anyone on a first-come first-served basis, you are encouraged to arrive early. Reservations are not possible for this seating area. In previous years, seats were mostly filled by 7:00 am. Please note that the International Conference Center Hiroshima, which is located in Peace Memorial Park, will be open to the public and will have live footage of the Ceremony in Phoenix Hall and Himawari Room.

Please see the Hiroshima City website (<http://www.city.hiroshima.lg.jp/www/contents/1555032954537/index.html>) or contact the International Relations Division of the City of Hiroshima (Tel: 082-504-2106 / e-mail: kokusai@city.hiroshima.lg.jp) for more information.

Tuesday, August 6

Floating Paper Lanterns ピースメッセージとうろう^{なが}流し

TIME: 6:00 pm – 9:30 pm

VENUE: Motoyasu-gawa River (around the A-bomb Dome and Motoyasu-bashi Bridge), Naka-ku

DIRECTIONS: Get off at Genbaku Dome-mae streetcar stop.

ENQUIRIES: Floating Paper Lanterns Executive Committee 082-245-1448

© Paper lanterns will be floated down the river to console the souls of the deceased. Lanterns (¥600) will be sold at four places inside the Peace Memorial Park from 6:00 am to 8:30 pm on the day.

Wednesday, August 7 – Monday, August 26

Tomica Land in Hiroshima トミカ展^{てん} ~ 夢^{ゆめ}とあこがれは、^{せだい}世代を^こ超えて~

TIME: 10:00 am – 8:00 pm ² Entry allowed up to 7:30 pm.

² 10:00 am – 5:00 pm on August 26

VENUE: Sogo Hiroshima Department Store, 9F, Motomachi, Naka-ku

DIRECTIONS: Get off at Kamiya-cho-higashi or Kamiya-cho-nishi streetcar stop.

TICKETS: w Advance: Junior high school students and above: ¥600

3 years old – elementary school students: ¥400

w At the door: Junior high school students and above: ¥800

3 years old – elementary school students: ¥400

² Advance tickets are sold at convenience stores (Seven-Eleven, Lawson, FamilyMart), Ticket PIA, EDION Hiroshima until August 6.

² Admission free for children who are 2 years old and under

ENQUIRIES: RCC Broadcasting 082-222-1133 (10 am – 5 pm on weekdays)

© “Tomica” are die-cast toy mini-cars for children produced by a Japanese company, Takara Tomy. Tomica has remained a popular product since it appeared for the first time in 1970.

Saturday, August 10 – Tuesday, August 20

Dinosaur Exhibition in Hiroshima ひろしまだいきょうりゅうはく 広島大恐竜博

TIME: 9:30 am – 4:00 pm

VENUE: West Exhibition Hall, Hiroshima Prefectural Industrial Exhibition Hall (*Hiroshima Sangyo Kaikan*)

DIRECTIONS: Get off at Minami Kuyakusho-mae streetcar stop.

TICKETS: ® Advance: Junior high school students and above: ¥1,200

3 year olds – elementary school students: ¥800

® At the door: Junior high school students and above: ¥1,400

3 year olds – elementary school students: ¥1,000

® Persons with disabilities: Junior high school students and above: ¥1,100

3 years old – elementary school students: ¥700



Please feel free to contact the International Exchange Lounge at 082-247-9715.

E-mail: golounge@pcf.city.hiroshima.jp

July 2019

- <NOTES> | Advance tickets will be sold at convenience stores (Lawson, 7-Eleven and FamilyMart) and Ticket PIA until August 9.
 | Tickets for people with disabilities will be sold at the venue only. (There will be no advance tickets.)

ENQUIRIES: HOME Event Center 082-221-7116 (10:00 am – 5:00 pm on weekdays)

² During the exhibition period (August 10 – 20): 082-256-6331

Saturday, August 10 & Sunday, August 11

“Hiroshima Bon Dance” ひろしま^{ほん}盆ダンス

TIME: 4:00 pm – 9:30 pm

VENUE: Open space of the former Hiroshima Municipal Baseball Stadium, Motomachi, Naka-ku

DIRECTIONS: Take a streetcar to Kamiya-cho-nishi or the Genbaku Dome-mae.

ADMISSION FEE: Free

ENQUIRIES: Chugoku Shimbun 082-236-2211 (9:30 am – 5:30 pm on weekdays)

Website: <https://hiroshima-bon-dance.jp>

© On August 7 in 1946, a big bon dance festival was held to commemorate war victims and to pledge to recover from war's devastation and achieve peace. After 72 years of the bon dance, this festival will be held as a Hiroshima's new summer event this year.

This event will be postponed until August 12 (Mon.) if it rains on both Aug. 10 and 11.

October 9 (Wed.), 10 (Thurs.), 11 (Fri.), 13 (Sun.), 14 (Mon.) & 15 (Tues.)

FIVB Volleyball World Cup Japan 2019 in Hiroshima (men's match)

FIVB ワールドカップバレーボール 2019 ^{だんし}男子 ^{ひろしまたいかい}広島大会

TIME: ® Group A: the venue will open at 11:30 am

® Group B: the venue will open at 10:00 am

VENUE: Hiroshima Green Arena (Hiroshima Prefectural Sogo Gymnasium), Main Arena for Group A and Sub Arena for Group B, Motomachi, Naka-ku

DIRECTIONS: 5 minutes' walk from Kamiya-cho-nishi streetcar stop.

TICKETS: ² You can watch all games (three games in total) on the day with one ticket.

For Group A

- Reserved seats: SS: ¥10,000 S: ¥8,000 A: ¥6,000 B: ¥4,000

- Non-reserved seats: Adults: ¥3,000 High school students: ¥2,000

Junior & elementary school students: ¥1,000

For Group B: High school students and above: ¥2,000

Junior & elementary school students: ¥1,000

² Seating is free for all tickets.

TICKET OFFICES: EDION Hiroshima (*Honten*), convenience stores (Lawson, 7-Eleven), Ticket PIA

ENQUIRIES: ® About tickets: TSS 082-253-1010 (10:00 am – 6:00 pm on weekdays)

® About the World Cup: Japan Volleyball Association

03-5786-2100 (10:00 am – 5:00 pm on weekdays)

Website: <https://www.jva.or.jp/>

Saturday, October 26

2019 Autumn Sumo Tour in Hiroshima (Ozumo Aki Basho) ^{おおずもうあきばしよ}大相撲安芸場所

TIME: 8:00 am – 3:00 pm

VENUE: MAEDA Housing Higashi-ku Sports Center, Ushita-shinmachi, Higashi-ku

DIRECTIONS: 3 minutes' walk from *Astramline* Ushita Station.

TICKETS:

1st Floor

| “*Tamari*” Box Seats: S: ¥14,000/person A: ¥13,000/person

| “*Masu*” Box Seats: ¥24,000 for 2 people

Please feel free to contact the International Exchange Lounge at 082-247-9715.

E-mail: golounge@pcf.city.hiroshima.jp

July 2019

Chair Seats

East & west side: ¥13,000/person North & south side: ¥11,000/person

2nd Floor

Chair Seats: ¥6,000/person

<Notice> ² Seats with “ ”: You can take a special sumo cushion home as a souvenir.

² Tickets are sold at *Ozumo Aki Basho* Ticket office and Chugoku Shimbun Company.

ENQUIRIES: *Ozumo Aki Basho* Office 082-294-2363

Sunday, November 3

Kaberenzan Trail Run in Asakita 可部連山トレイルラン in あさきた

VENUE: w Trail run seminar, reception, starting post and finish:

The Chugoku Electric Power Co., Inc. (Chugoku Denryoku), Nanbara Kenshûjo, Kabe, Asakita-ku

w Trail run:

Range of mountains in the Kabe area; Mt. Dotoko, Mt. Kabe-kanmuriyama, Mt. Fukuojiyama, and more

COURSE AND ELIGIBILITY FOR PARTICIPATION:

- Long course (22 km): Those who are high school students and above.
350 people will be accepted.
- Short course (16 km): Those who are junior high school students and above.
200 people will be accepted.
- Beginner course (16 km): Those who are junior high school students and above, and parent-child pairs*
100 people will be accepted.
*Parent-child pairs: the 5th & the 6th elementary school students and their parent or guardian.

SCHEDULE:

- Nov. 2 (Sat.): Trail run seminar, 1:00 pm – 4:00 pm
² 50 people will be accepted.
² For the trail run participants (junior high school students and above) on Nov. 3
- Nov. 3 (Sun.):
w Reception: 7:00 am – 8:00 am
w Long course: 9:00 am start
w Short course: 9:30 am start
w Beginner course: 9:50 am start

DIRECTIONS TO NANBARA KENSHÛJO:

Take a bus bound for Nanbara / Nanbara Kenshûjo from Hiroshima Bus Center (Sogo Hiroshima, 3F). 3 minutes' walk from Kenshû Sentâ stop.

HOW TO PARTICIPATE: You can enroll online until September 23 (Mon.).

² Website: <http://kaberenzan-trail.com/>

² Enrollment will be closed when all spots are full.

PARTICIPATION FEE: Trail run seminar: ¥2,000, Long course: ¥6,000, Short course: ¥4,000,
Beginner course: ¥2,500, ¥4,000 for parent-child pairs

ENQUIRIES: Kabe Renzan Trail Run in Asakita Executive Committee 082-819-3904

Website: <http://kaberenzan-trail.com/>

<NOTE> Those who are under the age of 18 and participants of parent-child pairs must submit a pledge on November 3. The pledge is on the above website.

Events Held on Miyajima

☞ Please check the Miyajima Tourist Association's website for more information.
Website: <http://www.miyajima.or.jp/english>

Sunday, July 7

Ichitate-sai いちたてさい 市立祭

TIME: From 9:00 am onwards

VENUE: Itsukushima Shrine, Miyajima

DIRECTIONS: Get off at JR Miyajima-guchi station (JR Sanyo Line) or Miyajima streetcar stop (Hiroden streetcar Miyajima Line), then take a ferry to Miyajima.

FEE: Admission fee for Itsukushima Shrine

(Adults & university students: ¥300 High school students: ¥200
Junior high & elementary school students: ¥100)

ENQUIRIES: Itsukushima Shrine 0829-44-2020

© After the ritual ceremony, *bugaku* (traditional Japanese imperial court dance music) will be performed.

Sunday, July 7

Seven Gods of Fortune Festival しちふくじんじゅふくさい 七福神授福祭

TIME: From 11:00 am onwards

VENUE: Daishoin Temple, Miyajima

DIRECTIONS: Get off at JR Miyajima-guchi station (JR Sanyo Line) or the Miyajima streetcar stop (Hiroden streetcar Miyajima Line), then take a ferry to Miyajima.

ENQUIRIES: Daishoin Temple 0829-44-0111

© A Buddhist music service in dedication to the *Shichifukujin* (Seven Gods of Fortune) will be held.

Friday, July 19

Miyajima Kangen-sai Festival かんげんさい 管絃祭

TIME: From 3:00 pm onward

VENUE: Itsukushima Shrine and other shrines on Miyajima

DIRECTIONS: Get off at JR Miyajima-guchi Station (JR Sanyo Line) or the Miyajima streetcar sStop (Hiroden Streetcar Miyajima Line), then take a ferry to Miyajima.

FEE: Admission fee for Itsukushima Shrine

(Adults & university students-¥300 High school students-¥200
Junior high & elementary school students-¥100)

ENQUIRIES: Itsukushima Shrine 0829-44-2020

© The *Kangen-sai* Festival began in the Heian Era (794 –1185). *Kangen* is traditional Japanese music played with *San-kan* (three flutes), *San-ko* (three drums) and *San-gen* (three strings). The *Kangen-bune* boat cruises while musicians on-board play this unique music through the *ôtorii* gate to the Jigozen Shrine located on the opposite bank. It then proceeds to Nagahama and Ômoto Shrines on Miyajima Island and returns to Itsukushima Shrine. Itsukushima *Kangen-sai* Festival is one of the three largest boat festivals in Japan.



Please feel free to contact the International Exchange Lounge at 082-247-9715.

E-mail: golounge@pcf.city.hiroshima.jp

July 2019

Friday, July 19**Lantern Parade in Miyajima** ちょうちんぎょうれつ行列**TIME:** From 8:00 pm onwards**VENUE:** Lanterns will be given out for free in front of Nagahama Shrine.**DIRECTIONS:** Get off at JR Miyajima-guchi Station (JR Sanyo Line) or the Miyajima streetcar sStop (Hiroden Streetcar Miyajima Line), then take a ferry to Miyajima.**ENQUIRIES:** Miyajima Tourist Association 0829-44-2011© This parade uses lanterns to welcome the *Kangen-bune* boat to Nagahama Shrine on its return from Jigozen Shrine. After the boat reaches Nagahama Shrine, participants will parade towards Itsukushima Shrine.**Sunday, July 28****Miyajima Sundance 2019****TIME:** 9:00 am – 7:00 pm**VENUE:** Miyajima Tsutsumigaura Natural Park, Miyajima**DIRECTIONS:** Get off at JR Miyajima-guchi Station (JR Sanyo Line) or the Miyajima streetcar stop (Hiroden Streetcar Miyajima Line), then take a ferry to Miyajima. Then take a bus or walk 40 min. from Miyajima Pier. A bus to the park runs from Miyajima Pier.**TICKETS:** Advance: ¥3,000 At the door: ¥4,000

2 Free admission for junior high school students and under

2 Advance tickets are sold at Cusco Café, Tinto, convenience stores (FamilyMart and 7-eleven).

ENQUIRIES: Barcos Group E-mail: miyajimasundance@gmail.comFacebook: <https://www.facebook.com/groups/SUNDANCEHIROSHIMA/>

© Dance, DJ and live performances, international food and drink, and more!

Saturday, August 3**Tamatorisai Festival** たまとりさい
玉取祭**TIME:** TBC**VENUE:** Itsukushima Shrine, Miyajima**DIRECTIONS:** Get off at JR Miyajima-guchi Station (JR Sanyo Line) or the Miyajima streetcar stop (Hiroden Streetcar Miyajima Line), then take a ferry to Miyajima.**ENQUIRIES:** Itsukushima Shrine 0829-44-2020

© Young men from Miyajima-cho will fight for a precious good luck stone hanging from a tower erected in the sea. This high-spirited festival takes place in front of the floating ōtorii gate.

Events Held Outside of Hiroshima City**Saturday, June 1 – Tuesday, September 10****Cormorant Fishing in Miyoshi** みよし うかい
三次の鵜飼**TIME:** 7:30 pm – 8:30 pm (Excursion will be canceled if it rains heavily.)

2 Please come to the reception by 7:00 pm.

VENUE: Tokaichi Shinsui Park, Miyoshi City**DIRECTIONS:** 15 minutes' walk from JR Miyoshi Station (JR Geibi Line).**PASSENGER FARE:**® Sunday – Thursday: Junior high school students and above: ¥3,000
Elementary school student: ¥1,500® Friday & Saturday: Junior high school students and above: ¥3,300

Please feel free to contact the International Exchange Lounge at 082-247-9715.

E-mail: golounge@pcf.city.hiroshima.jp

July 2019

Elementary school students: ¥1,650

² Reservations are required. Make a reservation by 5:00 pm before the day you wish to go.

² Reservations will not be accepted on August 31 (Miyoshi fireworks festival).

RESERVATIONS & ENQUIRIES: Miyoshi City Tourist Association 0824-63-9268

© Fishermen start out at night with lanterns and cormorants on small wooden boats. The birds are trained to catch *ayu* (sweetfish). Very unique white-colored cormorants (a type of water fowl, usually with black feathers) were donated by Ya'an, Miyoshi's friendship city in Szechuan, China, and can be seen nowhere else in Japan.

Friday, July 12 – Sunday, July 14

Tenjin-sai Festival てんじんさい 天神祭

TIME: w July 12: From 5:00 pm onwards

w July 13: From 4:00 pm onwards

w July 14: From 2:00 pm onwards

VENUE: Misode Tenmangu Shrine, Onomichi City

DIRECTIONS: 2 minutes' walk from Ropeway Sanroku Station.

N Ways to get to Ropeway Sanroku Station N

• 15 minutes' walk from JR Onomichi Station (JR Sanyo Line).

Take a bus from JR Onomichi Station and get off at Nagae-guchi.

ENQUIRIES: Misode Tenmangu Shrine 0848-37-1889

© This is Misode Tenmangu Shrine's summer festival. People carrying a *mikoshi*, a portable Shintô shrine, will go up and down the 55 steps to the shrine grounds.

Saturday, July 13

Otebi Festival てびしんじ お手火神事

TIME: From 8:00 pm onwards

VENUE: Nunakuma Shrine, Tomo-cho, Fukuyama City

DIRECTIONS: Take a bus from JR Fukuyama Station (JR Sanyo Line) and get off at Tomonoura. 10 minutes' walk from the stop.

ENQUIRIES: Nunakuma Shrine 084-982-2050

© *Otebi* is a fire festival in which men carry three torches weighing about 150kg each and offer them to the shrine. This is a traditional festival which has been held since the Kamakura Period (1185 – 1393). This is designated as a Fukuyama City Intangible Folk Cultural Properties.

Saturday, July 13

The 12th Kurahashi Kentoshi-sen Festival だい かい けんとうしせん 第12回くらはし遣唐使船まつり

TIME: From 3:30 pm onwards

© Fireworks festival will be held from 8:15 pm. (this will be canceled if it rains heavily.)

VENUE: Katsurahama Beach, Kurahashi-cho, Kure City

DIRECTIONS: Take a bus from JR Kure Station (JR Kure Line) and get off at Katsurahama Onsen Kan.

ENQUIRIES: *Kurahashi Shimin Center* 0823-53-1111

© It is said that Katsurahama beach was one of the ports of call of *Kentôshi*, envoys to the Tang Court in China between the 7th and the 9th century.

Saturday, July 13

Takehara Tanabata Festival (Star Festival) たなばた たけはら七夕まつり

TIME: 5:00 pm – 9:00 pm

VENUE: Around the shopping street in front of JR Takehara Station, Takehara City

Please feel free to contact the International Exchange Lounge at 082-247-9715.

E-mail: golounge@pcf.city.hiroshima.jp

July 2019

DIRECTIONS: Get off at JR Takehara Station (JR Kure Line).

ENQUIRIES: Takehara Ekimae Shôtengai Shinkô Kumiai 0846-22-5542

© Tanabata is a star festival usually held on July 7 every year. Attractions will include stage performances and food kiosks.

Sunday, July 14

Tadanoumi Gion Festival & Mikoshi Parade

ただのうみぎ おんまつり
忠海 祇園祭 とみこし ぎょうじ 行事

TIME: Highlight of the Event: around 3:00pm

VENUE: Around JR Tadanoumi Station, Takehara City

DIRECTIONS: Get off at JR Tadanoumi Station (JR Kure Line).

ENQUIRIES: Tadanoumi Kaihatsu Yahata Shrine 0846-26-0859

© Men who have turned or will turn 20 years of age this year carry *mikoshi*, a portable shrine, and parade through the streets all day. The festival is designated as one of Hiroshima Prefecture's Intangible Folk Cultural Properties.

Saturday, July 20

Innoshima Suigun Fireworks Festival

すいぐんはなびたいかい
いんのしま 水軍 花火 大会

TIME: 8:30 pm – 9:00 pm

VENUE: Habu Port, Onomichi City

DIRECTIONS: 15 minutes by car from Innoshima-kita I.C. on the Shimanamikaido Expressway.

ENQUIRIES: Executive Committee 0845-26-6212 2 0845-22-0032 on July 20 (2:00 pm – 7:00 pm)

© This will be canceled if it rains heavily on the 20th.

Saturday, July 20 & Sunday, July 21

N Applications for the competition have already been closed.

WOODONE Kendama World Cup Hatsukaichi 2019

VENUE: Hatsukaichi City Sports Center "Suncherry", Hatsukaichi City

DIRECTIONS: 10 minutes' walk from JR Miyauchi Kushido Station (JR Sanyo Line) or Hatsukaichi Shiyakusho-mae streetcar stop (Hiroden Miyajima Line).

ADMISSION FEE: Free

ENQUIRIES: Hatsukaichi City Tourist Association 0829-31-5656

Official website: <https://www.gloken.net/jp/kwc/>

Saturday, July 27

Tadanoumi Tenjin Yo-ichi Summer Festival

ただのうみてんじん よいち
忠海 天神 夜市

TIME: 5:00 pm – 9:00 pm

VENUE: In front of JR Tadanoumi Station, Takehara City

DIRECTIONS: Get off at JR Tadanoumi Station (JR Kure Line).

ENQUIRIES: "Tadanoumi Hohoemi Town" 0846-26-1325

© Traditional folk entertainment, kiosks, and more.

Saturday, July 27

Miyoshi Kinsai Festival

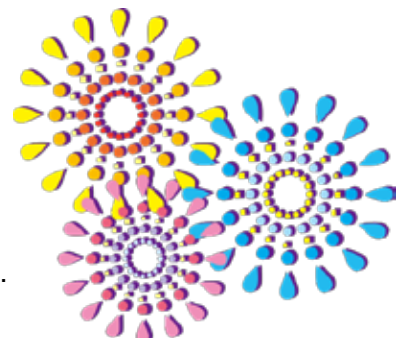
みよし きんさい まつり
三次 きんさい 祭

TIME: Parade will start from 5:00 pm onwards.

VENUE: Around Miyoshi-machi and Tokaichi Chuo-dori Street, Miyoshi City

DIRECTIONS: 5 – 10 minutes' walk from JR Miyoshi Station (JR Geibi Line).

ENQUIRIES: Executive Committee 0824-62-8868



Please feel free to contact the International Exchange Lounge at 082-247-9715.

E-mail: golounge@pcf.city.hiroshima.jp

July 2019

Saturday, July 27**Kure Fireworks Festival** くれ なつ かいじょうはなびたいかい 呉の夏まつり「海上花火大会」**TIME:** From 8:00 pm onwards**VENUE:** Kure Port, Kure City**DIRECTIONS:** 20 minutes' walk from JR Kure Station (JR Kure Line).**ENQUIRIES:** Kure Festival Association (*Kure Matsuri Kyokai*) 0823-21-0151© This will be canceled if it rains heavily on the 27th.**Saturday, July 27****Onomichi Sumiyoshi Fireworks Festival** すみよしはなび おのみち住吉花火まつり**TIME:** 7:30 pm – 8:30 pm ® Festival at Sumiyoshi Shrine will start from 2:00 pm onwards.**VENUE:** *Onomichi Suidô*, Onomichi City**DIRECTIONS:** 15 minutes' walk from JR Onomichi Station (JR Sanyo Line).**ENQUIRIES:** *Onomichi Sumiyoshi Kai* 0848-22-2165© The fireworks will be postponed until July 28 (Sun.) if it rains heavily on the 27th.**Saturday, July 27****Kinoe Jûshichiyasai (Festival & Boat Race) & Fireworks Festival**きのえじゅうしちやさい かいでんまきょうそう かいじょうはなびたいかい
木江十七夜祭 (櫂伝馬競争)・海上花火大会**TIME:** w *Jû-shichi-ya-sai* Festival: 9:00 am – 9:00 pm w Fireworks Festival: From 8:00 pm onwards**VENUE:** *Jû-shichi-ya-sai* Festival: Kinoe Area and Kinoe Port, Osaki-kamijima-cho

Fireworks Festival: Around Kinoe Port, Osaki-kamijima-cho

DIRECTIONS: Get off at JR Takehara Station (JR Kure Line) and go to the Takehara Port by bus or on foot. Then get on a ferry and get off at Tenma Port. 5 minutes' walk from the port.**ENQUIRIES:** Ôsaki-kamijima-chô Tourist Association 0846-65-3455**Saturday, July 27 & Sunday, July 28****Takehara Sumiyoshi Festival** たけはらすみよし 竹原住吉まつり**TIME:** ® July 27: 5:30 pm – 10:00 pm ® July 28: 8:30 am – 8:00 pm**VENUE:** Sumiyoshi Shrine, Takehara City**DIRECTIONS:** 10 minutes' from JR Takehara Station (JR Kure Line).**ENQUIRIES:** Executive Committee 0846-22-0298

© This is a traditional summer festival in Takehara City that has been observed since the Edo period.

Sunday, October 20**Setouchi Shimanami / Yumeshima Cycling Festival 2019**せとうち
瀬戸内しまなみ・ゆめしまサイクリングフェス 2019**VENUE:** Setouchi Shimanami & Yumeshima Kaido, Onomichi & Imabari City**HOW TO PARTICIPATE:** You can enroll online from July 1 (Mon.) to September 5 (Thurs.).2 Website: <https://shimanami-cycle.or.jp>

2 Enrollment will be closed when all spots are full.

PARTICIPATION FEE: The participation fee depends on the course.

2 There will be seven courses.

ENQUIRIES: Shimanami Japan 0848-22-4073 Website: <https://shimanami-cycle.or.jp>

Please feel free to contact the International Exchange Lounge at 082-247-9715.

E-mail: golounge@pcf.city.hiroshima.jp

July 2019

Events Held in Yamaguchi Prefecture

Saturday, June 1 – Tuesday, September 10

Cormorant Fishing in Iwakuni

きんたいきょう うかい
錦帯橋の鵜飼

TIME: 7:00 pm – 9:00 pm

PLACE: Nishiki-gawa River & Kintaikyo Bridge, Iwakuni City

DIRECTIONS: Get off at JR Iwakuni Station (JR Sanyo Line) and take a bus bound for Kintaikyo Bridge.
Get off at Kintaikyo (a 20 min. bus ride).

PASSENGER FARE: Adults: ¥2,000 Children: ¥1,000

² There will be a different fare on August 3, the day of the fireworks festival.

RESERVATIONS & ENQUIRIES: Iwakuni City Tourist Association & *Ukai Office* 0827-28-2877

© Originating about 400 years ago, cormorant fishing under lit lanterns is a summer tradition in Iwakuni.

Saturday, July 20

Iwakuni Minato-matsuri Fireworks Festival

いわくにこうまつりはなびたいかい
岩国港みなと祭花火大会

TIME: 6:30 pm – 9:00 pm

VENUE: Around Iwakuni Port Building, Iwakuni City

DIRECTIONS: Take a bus bound for Otake from JR Iwakuni Station (JR Sanyo Line) and get off at Shin-minato.

ENQUIRIES: Executive Committee 0827-23-1055

© The fireworks will be postponed until July 21 (Sun.) if it rains heavily on the 20th.

Saturday, August 3

Nishiki-gawa River Water Festival

にしきがわみず さいてん
錦川水の祭典

TIME: ① Festival: 9:00 am – 9:30 pm

② Fireworks Festival: 8:00 pm – 9:30 pm

VENUE: Around Kintaikyo Bridge, Iwakuni City

DIRECTIONS: Take a bus bound for Kintaikyo Bridge from JR Iwakuni Station (JR Sanyo Line) and get off at Kintaikyo (a 20 min. bus ride).

² Extra buses will run from the station on the event day.

ENQUIRIES: Iwakuni City Tourist Association 0827-41-2037 (8:30 am – 5:15 pm)

© The fireworks will be postponed until August 31 (Sat.) if it rains on the 3rd.

© An *Iwakuni taiko* (traditional Japanese drum) performance will also be held in the evening.



Please feel free to contact the International Exchange Lounge at 082-247-9715.

E-mail: golounge@pcf.city.hiroshima.jp

July 2019