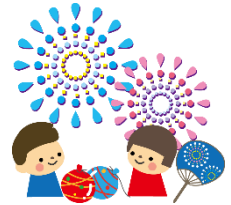


Seasonal Event Information

August 2019

★ Event schedules are subject to change. Please contact event organizers before you go.

Events Held in Hiroshima City



The 6th, 16th & 26th of Every Month

Talk with A-bomb Survivors 「6」のつく日 語り部さんとお話ししよう!

TIME: 11:00 am – 5:00 pm Story telling: ① 1:00 pm ② 3:00 pm

PLACE: Social Book Café Hachidori-sha, Dobashi-cho, Naka-ku

DIRECTIONS: 5 minutes' walk from Dobashi-cho streetcar stop.

FEE: Free admission ◇ You need to order at least one drink per person.

ENQUIRIES: Social Book Café Hachidorisha 082-576-4368 E-mail: hachidorisha@gmail.com

☑ This is not like a lecture, but a casual talk with A-bomb survivors. You can talk with A-bomb survivors in English on the 6th of every month.

★ Social Book Café Hachidorisha ★

OPEN HOURS: Wednesday, Thursday & Friday: 3:00 pm – 11:00 pm

Saturday, Sunday, national holidays: 11:00 am – midnight

The 6th, the 16th & the 26th of every month: Open from 11:00am

CLOSED: Mondays & Tuesdays

Saturday, July 27 – Sunday, September 8

teamLab: “Future Park” and “Animals of Flowers, Symbiotic Lives”

チームラボ★学ぶ! 未来の遊園地と、花と共に生きる動物達

TIME: 10:00 am – 8:00 pm (entry allowed up to 7:30 pm.)

VENUE: NTT CRED Hall, Motomachi CRED Pacela 11F, Motomachi, Naka-ku

DIRECTIONS: ① Get off at the *Astramline* Kencho-mae station.

② Get off at Kamiya-cho-higashi or Kamiya-cho-nishi streetcar stop.

TICKETS: Adults: ¥1,400 Senior & junior high school students: ¥1,000

Elementary school students – 3 years old: 600 2 years old and under: Free

◇ Elementary school students and under should be accompanied by parents or guardians.

ENQUIRIES: teamLab website (<https://futurepark.teamlab.art/places/credhiroshima>)

Sundays in August, September & October

Early-morning Opening of Shukkeien Garden

しゅっけいえんそうちようかいえん
縮景園早朝開園

OPEN HOURS: The garden will open early on Sundays in August, September and October.

7:00 am – 6:00 pm in August & September; 7:00 am – 5:00 pm in October

◇ The garden opens at 9 am on weekdays and Saturdays.

VENUE: Shukkeien Garden

DIRECTIONS: 5 minutes' walk from Shukkeien-mae streetcar stop (Hiroden Hakushima Line).

ADMISSION FEE: Adults-¥260, University & High school students-¥150

Junior high & Elementary school students- ¥100

ENQUIRIES: Shukkeien Garden 082-221-3620

☑ *Matcha* (green tea) will be served for the first 30 visitors on each day, and an *origami* lesson will also be held.

Please feel free to contact the International Exchange Lounge at 082-247-9715.

E-mail: golounge@pcf.city.hiroshima.jp

August 2019

Sunday, July 28 – Saturday, August 10**Exhibition Commemorating 120 Years of Emigration from Japan to Peru**にほんじん いじゆう きねんでん
日本人ペルー移住120年記念展**TIME:** 1:00 pm – 8:00 pm on July 28 & 10:00 am – 6:00 pm on August 10**VENUE:** Hiroshima City International House (*Ryûgakusei Kaikan*), 1F, Exchange Lounge, Nishi-kojin-machi, Minami-ku.**OPEN HOURS:** 10:00 am – 8:00 pm**DIRECTIONS:** 5 minutes' walk from JR Hiroshima Station, south exit.**ADMISSION FEE:** Free**ENQUIRIES:** Hiroshima-Peru Association 070-3897-7387 (Kobayashi) or 080-6337-0284 (Oda)**Wednesdays between April 3 and December 25, 2019**❖ **August 7, 14, 21 & 28; September 4, 11, 18 & 25****Hiroshima Kagura** ひろしまけんみんぶんか ひろしまかぐら ていきこうえん
広島県民文化センター「広島神楽」定期公演**TIME:** 7:00 pm – 8:45 pm (Doors will open at 6:00 pm.)**VENUE:** Hiroshima Prefectural Citizens' Cultural Center (*Hiroshima Kenmin Bunka Center*), Otemachi, Naka-ku (located near Hondori shopping street)**DIRECTIONS:** 3 minutes' walk from either Kamiya-cho-nishi or Hondori streetcar stop.**TICKETS:** ¥1,200 ❖ Seats are unassigned.

❖ Tickets will be sold from 5:40 pm on the date of each performance at the Center. You must first get a number to buy a ticket. Numbers will be assigned from 4:30 pm at the Center (1F, lobby). There are no advance tickets.

ENQUIRIES: Hiroshima Prefectural Citizen's Culture Center (*Hiroshima Kenmin Bunka Center*)
082-245-2311**Saturdays, August 3, 10, 17 & 31****An Evening of Kagura** よかぐらこうえん
夜神楽公演**TIME:** ◆ *Kagura* Performance: 7:00 pm – 7:45 pm (The venue will open at 6:30 pm.)

◆ Q&A and Photo Session: From 7:45 pm onwards

VENUE: Hiroshima Prefectural Art Museum Auditorium, Kami-nobori-cho, Naka-ku**DIRECTIONS:** Get off at Shukkeien-mae streetcar stop.**TICKETS:** Adults: ¥1,000 Students: ¥500 For groups of 10 or more: ¥800

❖ Admission free for children 3 and under (be seated on a parent or guardian's lap)

❖ Tickets are sold at the venue from 6:30 pm on the day of each performance. There are no advance tickets.

ENQUIRIES: Hiroshima Interpreter & Guide Association080-3731-4804 (10:00 am – 5:00 pm) <http://www.hiroshima-kagura.com>**Sundays, August 4 & 18****Hiroshima Minato Marché** ひろしまみなとマルシェ**TIME:** 8:00 am – 2:00 pm**VENUE:** Open space between East and West Terminals of Hiroshima Port (Minami-ku)**DIRECTIONS:** Get off at Hiroshima Port streetcar stop.**ENQUIRIES:** Hiroshima Minato Marché Office 082-255-6646

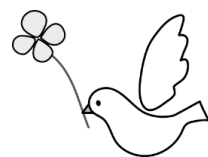
☐ You can buy and taste locally-grown fresh vegetables and other food products at the market.

Tuesday, August 6**The 74th Peace Memorial Ceremony** だい かいへいわきねんしきてん
第74回平和記念式典**TIME:** 8:00 am – 8:50 am**VENUE:** In front of the Cenotaph for the A-Bomb Victims, Peace Memorial Park**ENQUIRIES:** Citizens Activities Promotion Division, Hiroshima City Hall (*Shimin Katsudô Suishin Ka*)082-504-2103 E-mail: katsudo@city.hiroshima.lg.jp

Please feel free to contact the International Exchange Lounge at 082-247-9715.

E-mail: golounge@pcf.city.hiroshima.jp

August 2019



■ On August 6, at 8:15 am, at the sound of a bell rung by one representative from the bereaved families and one representative for young people, a moment of silence is observed for the deceased. At that moment, factory sirens as well as temple and church bells are rung throughout the city, and Hiroshima is deeply wrapped in prayer. On this day, the Mayor of Hiroshima delivers the Peace Declaration, addressed to the whole world, at the ceremony. People recall what happened on August 6, 1945, and in their prayers, ponder the meaning of peace.

❖ **Now Accepting Seat Reservations from Non-Japanese Speakers for the 2019 Peace Memorial Ceremony**

The International Relations Division of the City of Hiroshima is now accepting applications from non-Japanese speakers for seats and simultaneous interpretation receivers (English Only) for this year's Peace Memorial Ceremony.

<TO APPLY>

Please fill out a Reservation Form and List of Attendees, and send them back to the International Relations Division at kokusai@hiroshima.lg.jp. Please write the names of all participants on the Attendees sheet. You may use a second sheet if you need more space. The International Relations Division will contact you regarding whether or not your reservation request could be granted. You can download the reservation form and list of attendees from the Hiroshima City website (<http://www.city.hiroshima.lg.jp/www/contents/1555032954537/index.html>).

◇ Seats are limited. Once the seating quota has been reached, they will stop accepting applications. Last year they received an influx of applications. If you wish to be seated during the Ceremony, please apply early.

Seating is also available in the Unassigned Seating Area, however, as seating is open to anyone on a first-come first-served basis, you are encouraged to arrive early. Reservations are not possible for this seating area. In previous years, seats were mostly filled by 7:00 am. Please note that the International Conference Center Hiroshima, which is located in Peace Memorial Park, will be open to the public and will have live footage of the Ceremony in Phoenix Hall and Himawari Room. Please see the Hiroshima City website (<http://www.city.hiroshima.lg.jp/www/contents/1555032954537/index.html>) or contact the International Relations Division of the City of Hiroshima (Tel: 082-504-2106 / e-mail: kokusai@city.hiroshima.lg.jp) for more information.

Tuesday, August 6

Sharing the Spirit of Hiroshima with the World 2019: Youth Peace and

Culture Events せいしょうねんへいわ ぶんか イベント「ヒロシマのこころを世界に2019」

TIME: 9:00 am – 5:00 pm

VENUE: International Conference Center Hiroshima (inside Peace Memorial Park)

DIRECTIONS: 5 minutes' walk from Genbaku Dome-mae (A-Bomb Dome) streetcar stop.

ADMISSION FEE: Free

PROGRAMS:

■ **Program 1 (Phoenix Hall, BF1):**

10:00 am – noon

Children's peace assembly: messages from the children

2:00 pm – 3:00 pm

Funairi High School Drama Club presents

“Mata Aimashou / Until We Meet Again”, a play about peace and the Atomic Bombing

■ **Program 2 (Himawari, BF2):**

1:00 pm – 5:00 pm

International Youth Conference for Peace in the Future 2019 in Hiroshima

■ **Program 3 (Dahlia 1, BF2):**

9:00 am – 11:00 am

Ueda School tea ceremony

Green tea will be provided free of charge. Tea ceremony utensils exposed to the atomic bomb will also be displayed.

2:00 pm – 3:00 pm

Animation workshop

3:30 pm – 4:30 pm

Screening of independent youth animation on Hiroshima and peace



Please feel free to contact the International Exchange Lounge at 082-247-9715.

E-mail: golounge@pcf.city.hiroshima.jp

August 2019

■ **Program 4 (Dahlia 2, BF2):**

9:00 am – 2:00 pm **Sketches of peace exhibit by the Hiroshima Motomachi High School's creative expression course**

■ **Program 5 (Cosmos Room, BF2):**

A-bomb Survivor Testimony ☞ No reservation required

① 10:00 am – 12:30 pm A-bomb survivor testimony in English (discussion to follow)

② 1:00 pm – 2:00 pm A-bomb survivor testimony in Japanese

③ 2:30 pm – 3:30 pm A-bomb survivor testimony in Japanese

Art Exhibit: Graphic illustrations for peace (by the Hiroshima Motomachi High School's creative expression course)

Others

- Learn about initiatives aimed at elevating the paper crane as a symbol of peace
- **2020 Vision (nuclear weapons abolition campaign): Petition for the conclusion of the Treaty on the Prohibition of Nuclear Weapons as soon as possible**

ENQUIRIES: Citizens Activities Promotion Division (*Shimin Katsudo Suishin Ka*), Hiroshima City Hall
082-504-2131 E-mail: katsudo@city.hiroshima.lg.jp

Tuesday, August 6

Floating Paper Lanterns ピースメッセージとうろう流し

TIME: 6:00 pm – 9:30 pm

VENUE: Motoyasu-gawa River (around the A-bomb Dome and Motoyasu-bashi Bridge), Naka-ku

DIRECTIONS: Get off at Genbaku Dome-mae streetcar stop.

ENQUIRIES: Floating Paper Lanterns Executive Committee 082-245-1448

☑ Paper lanterns will be floated down the river to console the souls of the deceased. Lanterns (¥600) will be sold at four places in Peace Memorial Park from 6:00 am to 8:30 pm on the day.

Wednesday, August 7 – Wednesday, August 21

Exhibition of Drawings of the A-bombing by High School Students

高校生が描いたヒロシマ 原爆の絵画展

TIME: 9:00 am – 6:00 pm (◇ Entry allowed up to 5:00 pm ◇ 9:00 am – noon on August 21)

VENUE: International Conference Center Hiroshima, BF2, Cosmos Room (inside Peace Memorial Park)

DIRECTIONS: 5 minutes' walk from Genbaku Dome-mae (A-Bomb Dome) streetcar stop.

ADMISSION FEE: Free

ENQUIRIES: ◆ About the exhibition: International Conference Center Hiroshima 082-242-7777

◆ About the works: Hiroshima Motomachi High School's Creative Expression Course
082-221-1510 (9:00 am – 4:00 pm on weekdays)

☑ This is an A-bombing drawings exhibition by the students of Hiroshima Motomachi High School's Creative Expression Course

Wednesday, August 7 – Monday, August 26

Tomica Land in Hiroshima トミカ展～夢とあこがれは、世代を超えて～

TIME: 10:00 am – 8:00 pm ◇ Entry allowed up to 7:30 pm.

◇ 10:00 am – 5:00 pm on August 26

VENUE: Sogo Hiroshima Department Store, 9F, Motomachi, Naka-ku

DIRECTIONS: Get off at Kamiya-cho-higashi or Kamiya-cho-nishi streetcar stop.

TICKETS: ◆ Advance: Junior high school students and above: ¥600

3 years old – elementary school students: ¥400

◆ At the door: Junior high school students and above: ¥800

3 years old – elementary school students: ¥400

◇ Advance tickets are sold at convenience stores (Seven-Eleven, Lawson, FamilyMart), Ticket PIA, EDION Hiroshima until August 6.

◇ Admission free for children who are 2 years old and under

ENQUIRIES: RCC Broadcasting 082-222-1133 (10 am – 5 pm on weekdays)

☑ "Tomica" are die-cast toy miniature cars for children produced by a Japanese company, Takara Tomy. Tomica has remained a popular product since it appeared for the first time in 1970.

Please feel free to contact the International Exchange Lounge at 082-247-9715.

E-mail: golounge@pcf.city.hiroshima.jp

August 2019

Saturday, August 10 – Tuesday, August 20**Dinosaur Exhibition in Hiroshima**ひろしまだいきょうりゅうはく
広島大恐竜博**TIME:** 9:30 am – 4:00 pm**VENUE:** West Exhibition Hall, Hiroshima Prefectural Industrial Exhibition Hall (*Hiroshima Sangyo Kaikan*)**DIRECTIONS:** Get off at Minami Kuyakusho-mae streetcar stop.**TICKETS:** ◆ Advance: Junior high school students and above: ¥1,200

3 year olds – elementary school students: ¥800

◆ At the door: Junior high school students and above: ¥1,400

3 year olds – elementary school students: ¥1,000

◆ People with disabilities: Junior high school students and above: ¥1,100

3 years old – elementary school students: ¥700

<NOTES> ■ Advance tickets will be sold at convenience stores (Lawson, 7-Eleven and FamilyMart) and Ticket PIA until August 9.

■ Tickets for people with disabilities will be sold at the venue only. (There will be no advance tickets.)

ENQUIRIES: HOME Event Center 082-221-7116 (10:00 am – 5:00 pm on weekdays)

◇ During the exhibition period (August 10 – 20): 082-256-6331

**Saturday, August 10 & Sunday, August 11****Hiroshima Bon Dance**ひろしま^{ほん}盆ダンス**TIME:** 4:00 pm – 9:30 pm**VENUE:** Site of the former Hiroshima Municipal Baseball Stadium, Motomachi, Naka-ku**DIRECTIONS:** Take a streetcar to Kamiya-cho-nishi or the Genbaku Dome-mae.**ADMISSION FEE:** Free**ENQUIRIES:** Chugoku Shimbun 082-236-2211 (9:30 am – 5:30 pm on weekdays)Website: <https://hiroshima-bon-dance.jp> E-mail: adinter@chugoku-np.co.jp

■ On August 7 in 1946, a big *bon* dance festival was held to commemorate war victims and to pledge to recover from war's devastation and achieve peace. After 73 years of the bon dance, this festival is held as a new summer event in Hiroshima.

This event will be postponed until August 12 (Mon.) if it rains on both Aug. 10 and 11.

October 9 (Wed.), 10 (Thurs.), 11 (Fri.), 13 (Sun.), 14 (Mon.) & 15 (Tues.)**FIVB Volleyball World Cup Japan 2019 in Hiroshima (men's match)**FIVB ワールドカップバレーボール 2019 ^{だんし}男子 ^{ひろしまたいかい}広島大会**TIME:** ◆ Group A: the venue will open at 11:30 am

◆ Group B: the venue will open at 10:00 am

VENUE: Hiroshima Green Arena (Hiroshima Prefectural Sogo Gymnasium), Main Arena for Group A and Sub Arena for Group B, Motomachi, Naka-ku**DIRECTIONS:** 5 minutes' walk from Kamiya-cho-nishi streetcar stop.**TICKETS:** ◇ You can watch all games (three games in total) on the day with one ticket.**For Group A**

• Reserved seats: SS: ¥10,000 S: ¥8,000 A: ¥6,000 B: ¥4,000

• Non-reserved seats: Adults: ¥3,000 High school students: ¥2,000
Junior & elementary school students: ¥1,000**For Group B:** High school students and above: ¥2,000

Junior & elementary school students: ¥1,000

◇ Seating is free for all tickets.

TICKET OFFICES: EDION Hiroshima (*Honten*), convenience stores (Lawson, 7-Eleven), Ticket PIA**ENQUIRIES:** ◆ About tickets: TSS 082-253-1010 (10:00 am – 6:00 pm on weekdays)

◆ About the World Cup: Japan Volleyball Association

03-5786-2100 (10:00 am – 5:00 pm on weekdays)

Website: <https://www.jva.or.jp/>

Please feel free to contact the International Exchange Lounge at 082-247-9715.

E-mail: golounge@pcf.city.hiroshima.jp

August 2019

Saturday, October 26**2019 Autumn Sumo Tour in Hiroshima (Ozumo Aki Basho)**おおずもうあきばしょ
大相撲安芸場所**TIME:** 8:00 am – 3:00 pm**VENUE:** MAEDA Housing Higashi-ku Sports Center, Ushita-shinmachi, Higashi-ku**DIRECTIONS:** 3 minutes' walk from *Astramline* Ushita Station.**TICKETS:**1st Floor

- “*Tamar*” Box Seats★: S: ¥14,000/person A: ¥13,000/person
- “*Masu*” Box Seats★: ¥24,000 for 2 people
- Chair Seats
 - East & west side: ¥13,000/person North & south side: ¥11,000/person

2nd Floor

- Chair Seats: ¥6,000/person

<Notice> ◇ Seats with “★”: You can take a special sumo cushion home as a souvenir.◇ Tickets are sold at *Ozumo Aki Basho* Ticket office and Chugoku Shimbun Company.**ENQUIRIES:** *Ozumo Aki Basho* Office 082-294-2363**Sunday, November 3****Kaberenzan Trail Run in Asakita**かべれんざん
可部連山トレイルラン in あさきた**VENUE:** ♦ Trail run seminar, reception, starting post and finish:

The Chugoku Electric Power Co., Inc. (Chugoku Denryoku), Nanbara Kenshūjo, Kabe, Asakita-ku

♦ Trail run:

Range of mountains in the Kabe area; Mt. Dotoko, Mt. Kabe-kanmuriyama, Mt. Fukuojiyama, and more

COURSE AND ELIGIBILITY FOR PARTICIPATION:

- ◎ Long course (22 km): Those who are high school students and above.
350 people will be accepted.
- ◎ Short course (16 km): Those who are junior high school students and above.
200 people will be accepted.
- ◎ Beginner course (16 km): Those who are junior high school students and above, and parent-child pairs*
100 people will be accepted.
*Parent-child pairs: the 5th & the 6th elementary school students and their parent or guardian.

SCHEDULE:

- ◎ Nov. 2 (Sat.): Trail run seminar, 1:00 pm – 4:00 pm
 - ◇ 50 people will be accepted.
 - ◇ For the trail run participants (junior high school students and above) on Nov. 3
- ◎ Nov. 3 (Sun.):
 - ♦ Reception: 7:00 am – 8:00 am ♦ Long course: 9:00 am start
 - ♦ Short course: 9:30 am start ♦ Beginner course: 9:50 am start

DIRECTIONS TO NANBARA KENSHŪJO:

Take a bus bound for Nanbara / Nanbara Kenshūjo from Hiroshima Bus Center (Sogo Hiroshima, 3F). 3 minutes' walk from Kenshū Sentā stop.

HOW TO PARTICIPATE: You can enroll online until September 23 (Mon.).◇ Website: <http://kaberenzan-trail.com/>

◇ Enrollment will be closed when all spots are full.

PARTICIPATION FEE: Trail run seminar: ¥2,000, Long course: ¥6,000, Short course: ¥4,000, Beginner course: ¥2,500, ¥4,000 for parent-child pairs**ENQUIRIES:** Kabe Renzan Trail Run in Asakita Executive Committee 082-819-3904Website: <http://kaberenzan-trail.com/>**<NOTE>** Those who are under the age of 18 and participants of parent-child pairs must submit a pledge on November 3. The pledge is on the above website.

Please feel free to contact the International Exchange Lounge at 082-247-9715.

E-mail: golounge@pcf.city.hiroshima.jp

August 2019

Sunday, November 3**The 39th Hiroshima International Peace Marathon**だい かい こくさいへいわ
第39回ひろしま国際平和マラソン**MAIN VENUE:** Coca-Cola Bottlers Japan Inc. Hiroshima Stadium**DIRECTIONS:** Take the no. 3 or no. 8 bus (bound for Kanon Marina Hop or Hiroshima Heliport) to Sogo Ground Iriguchi.**COURSES:** ◆ Kids course (1 km) ◆ Beginners course (5 km)
◆ Challenge course (10 km) ◆ Wheelchair course (5 km)**ELIGIBILITY:** Elementary school students and above**HOW TO PARTICIPATE:** Enrollment will be accepted online from August 1 (Thurs.).

◇ Enrollment will be closed when all 12,000 spots are full.

PARTICIPATION FEE:

	Adults & University students	High school students	Junior high school students	Elementary school students
Kids course	¥2,500	¥1,500	¥1,500	¥1,000
Beginner course	¥3,000	¥1,500	¥1,500	¥1,000
Challenge course	¥4,000	¥2,000		
Wheelchair course	¥3,000	¥1,500	¥1,500	

ENQUIRIES: Executive Committee 082-234-4679 (9:30 am – 5:30 pm on weekdays)
Website: <https://www.hiroshima-marathon.com/>**Events Held on Miyajima**◆ Please check the Miyajima Tourist Association's website for more information.
Website: <http://www.miyajima.or.jp/english>**Saturday, August 3****Tamatorisai Festival**たまとりさい
玉取祭**TIME:** TBC**VENUE:** Itsukushima Shrine, Miyajima**DIRECTIONS:** Get off at JR Miyajima-guchi Station (JR Sanyo Line) or the Miyajima streetcar stop (Hiroden Streetcar Miyajima Line), then take a ferry to Miyajima.**ENQUIRIES:** Itsukushima Shrine 0829-44-2020

☐ Young men from Miyajima-cho will fight for a precious good luck stone hanging from a tower erected in the sea. This high-spirited festival takes place in front of the floating ōtorii gate.

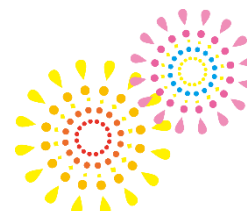
Saturday, August 10**Shiman Hassen-nichi (48,000-day) Kannon Festival**しまんはっせんにちかんのんたいさい
四万八千日観音大祭**TIME:** From 10:00 am onwards**VENUE:** Daishoin Temple, Miyajima**DIRECTIONS:** Get off at JR Miyajima-guchi Station (JR Sanyo Line) or the Miyajima streetcar stop (Hiroden Streetcar Miyajima Line), then take a ferry to Miyajima.**ENQUIRIES:** Daishoin Temple 0829-44-0111

☐ A ritual will be held for Kannon, one of the most popular Buddhist figures in Japan. It is said that a visit to the temple on this day gives you grace for 48,000 days.

Please feel free to contact the International Exchange Lounge at 082-247-9715.

E-mail: golounge@pcf.city.hiroshima.jp

August 2019

Saturday, August 17 & Sunday, August 18**Miyajima Odori (Dance) Festival** みやじまおど ゆう
宮島踊りの夕べ**TIME:** From 7:30 pm onwards**VENUE:** Mikasa-no-hama Beach (In front of Itsukushima Shrine, Miyajima)**DIRECTIONS:** Get off at JR Miyajima-guchi Station (JR Sanyo Line) or the Miyajima streetcar stop (Hiroden Streetcar Miyajima Line), then take a ferry to Miyajima.**ENQUIRIES:** Miyajima Geino Hozon-kai Office 0829-44-0757☑ Miyajima Odori is a type of traditional Japanese *bon* dance that originated about 500 years ago to console the souls of pirates that sank to the bottom of the Seto Inland Sea.**Saturday, August 24****The 47th Miyajima Fireworks Festival** だい かいみやじますいちゆうはなびたいかい
第47回宮島水中花火大会**TIME:** 7:30 pm – 8:30 pm**VENUE:** Near the floating Torii gate on Miyajima**DIRECTIONS:** Get off at JR Miyajima-guchi Station (JR Sanyo Line) or the Miyajima streetcar stop (Hiroden Streetcar Miyajima Line), then take a ferry to Miyajima.**ENQUIRIES:** Miyajima Tourist Association 0829-44-2011☑ The fireworks will be postponed until August 31 (Sat.) if it rains heavily on the 24th.**Saturday, August 24****Kinseki Jizoson-sai Festival** きんせきじぞうそんさい
金石地藏尊祭**VENUE:** Tokuju-ji Temple, Miyajima**DIRECTIONS:** Get off at JR Miyajima-guchi Station (JR Sanyo Line) or the Miyajima streetcar stop (Hiroden Streetcar Miyajima Line), then take a ferry to Miyajima.**ENQUIRIES:** Zonko-ji Temple 0829-44-2067☑ *Kinseki Jizoson*, a guardian deity of children, is famous for those wishing to become pregnant. This temple's image of him is opened to the public only once a year on this day.**Friday, August 30****Festival at Shinomiya Shrine (Tanomosan Festival)** しのみやじんじやさい
四宮神社祭 (たのもさん)**TIME:** From 3:00 pm onwards**VENUE:** Shinomiya Shrine, Momiji-dani Park, Miyajima**DIRECTIONS:** Get off at JR Miyajima-guchi Station (JR Sanyo Line) or the Miyajima streetcar stop (Hiroden Streetcar Miyajima Line), then take a ferry to Miyajima.**PROGRAM:** Ceremony at Shinomiya Shrine: From 3:00 pm onward
Boat floating from the front of Itsukushima Shrine: From 6:00 pm onward**ENQUIRIES:** Miyajima Tourist Association 0829-44-2011☑ In ancient times, as Miyajima was believed to be an island of the gods, people were forbidden from digging and tilling the ground. People in Miyajima depended on farm products from the mainland across the sea for a long time, and thus every year they float *Tanomosan* boats which are decorated with dolls, food and money to the main land to show their gratitude.**Friday, September 6 – Sunday, September 8****Miyajima Candle Festival, Mantōe** みやじま まんとうえ
宮島ローソクまつり 萬燈会**TIME:** 6:00 pm – 9:00 pm**VENUE:** Daishoin Temple, Miyajima**DIRECTIONS:** Get off at JR Miyajima-guchi Station (JR Sanyo Line) or Miyajima streetcar stop (Hiroden Streetcar Miyajima Line), then take a ferry to Miyajima.

Please feel free to contact the International Exchange Lounge at 082-247-9715.

E-mail: golounge@pcf.city.hiroshima.jp

August 2019

ADMISSION FEE: Free

ENQUIRIES: Daishoin Temple 0829-44-0111

☑ Many candles will be lit to console the souls of the deceased. A ritual will be held from 6:00 pm on Sept. 6 and concerts will be held for world peace from 7:00 pm on Sept. 6 and from 6:30 pm on Sept. 7 & 8.

Events Held Outside of Hiroshima City

Saturday, June 1 – Tuesday, September 10

Cormorant Fishing in Miyoshi

みよし うかい
三次の鵜飼



TIME: 7:30 pm – 8:30 pm (Excursion will be canceled if it rains heavily.)

◇ Please come to the reception by 7:00 pm.

VENUE: Tokaichi Shinsui Park, Miyoshi City

DIRECTIONS: 15 minutes' walk from JR Miyoshi Station (JR Geibi Line).

PASSENGER FARE:

◆ Sunday – Thursday: Junior high school students and above: ¥3,000
Elementary school student: ¥1,500

◆ Friday & Saturday: Junior high school students and above: ¥3,300
Elementary school students: ¥1,650

◇ Reservations are required. Make a reservation by 5:00 pm before the day you wish to go.

◇ Reservations will not be accepted on August 31 (Miyoshi fireworks festival).

RESERVATIONS & ENQUIRIES: Miyoshi City Tourist Association 0824-63-9268

☑ Fishermen start out at night with lanterns and cormorants on small wooden boats. The birds are trained to catch *ayu* (sweetfish). Very unique white-colored cormorants (a type of water fowl, usually with black feathers) were donated by Ya'an, Miyoshi's friendship city in Szechuan, China, and can be seen nowhere else in Japan.

Friday, August 9 – Sunday, August 11

The 44th Mihara Yassa Festival

だい かいみはら まつ
第44回三原やっさ祭り

TIME: ◆ Aug. 9 & 10: Events & yassa dance performance

◆ Aug. 11: Events & fireworks festival (8:00 pm – 8:45 pm)

VENUE: Events & dance performance ⇒ Around the south exit of JR Mihara Station (JR Sanyo Line), Mihara City

Fireworks festival ⇒ Around Itozaki Port, Mihara City

DIRECTIONS: ◆ Events & dance performance: Get off at JR Mihara Station (JR Sanyo Line)

◆ Fireworks festival: 10 minutes' walk from JR Itozaki Station (JR Sanyo Line)

ENQUIRIES: Executive Committee 0848-62-6155 Website: <https://www.yassa.net/>

☑ This is one of the biggest summer festivals in Hiroshima.

☑ The fireworks will be canceled if it rains heavily on the 11th.

Sunday, August 11

Yoshiwa Summer Festival

よしわなつ
吉和夏まつり

TIME: ① Daytime Event: 11:00 am – 2:00 pm

② Nighttime Event: 5:30 pm – 9:30 pm (Fireworks: from 9:00 pm onwards)

VENUE: ① Daytime Event: Kasen Park and Sunflower Field, Yoshiwa, Hatsukaichi City

② Nighttime Event: Yoshiwa Ground, Yoshiwa, Hatsukaichi City

DIRECTIONS: 5 minutes' drive from the Yoshiwa I.C. on the Chugoku Expressway.

ENQUIRIES: Executive Committee 0829-77-2404

Hatsukaichi City Hall, Yoshiwa Branch 0829-77-2111

☑ Fireworks will be postponed until August 12 (Mon.) if it rains heavily on the 11th.

Please feel free to contact the International Exchange Lounge at 082-247-9715.

E-mail: golounge@pcf.city.hiroshima.jp

August 2019

Tuesday, August 13**Higashino Sumiyoshi-sai & Fireworks Festival** すみよしさい かいじょうはなびたいかい ひがしの住吉祭・海上花火大会**TIME:** ◆ Sumiyoshi-sai festival: 9:00 am – 8:40 pm

◆ Fireworks festival: 8:10 pm – 8:40 pm

VENUE: Around Shiromizu Port, Osaki-kamijima-cho**DIRECTIONS:** Take a bus from JR Takehara Station (JR Kure Line) and get off at Takehara Port. Then take a ferry for Shiromizu Port.**ENQUIRIES:** Osaki-kamijima-cho Tourist Association 0846-65-3455☐ This festival has a history of 200 years. A boat (*Kai-tenma*) race held in the daytime is one of the highlights.☐ The fireworks will be canceled if it rains heavily on the 13th.**Wednesday, August 14 & Thursday, August 15****Fukuyama Summer Festival 2019 & Ashida-gawa Fireworks Festival**ふくやまなつ 福山夏まつり 2019 ・ がわはなびたいかい あしだ川花火大会**TIME:** Aug. 14: *Iroha-maru* YOSAKOI dance performance: 3:30 pm – 8:00 pm*Niagari-odori*, dance performance: 6:10 pm – 8:45 pm

Aug. 15: Ashida-gawa fireworks festival: 7:30 pm – 8:45 pm

VENUE: Chuo Park, shopping street, Ashida-gawa Bridge (fireworks festival), Fukuyama City**DIRECTIONS:** ◆ Summer festival: 5 minutes' walk from JR Fukuyama Station (JR Sanyo Line).

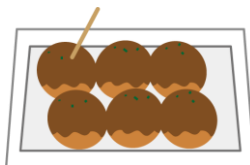
◆ Fireworks festival: Take a bus bound for the venue from JR Fukuyama Station (JR Sanyo Line).

ENQUIRIES: Fukuyama *Matsuri* Committee Office 084-944-5515☐ There will be a performance of *Niagari-odori*, a traditional dance handed down from the Edo period and designated as an Important Intangible Folk Cultural Property of Hiroshima Prefecture.☐ The fireworks will be postponed until August 16 (Fri.) if it rains heavily on the 15th.**Thursday, August 15****Horaku-odori (dance) Festival** ほうらく 法楽おどり**TIME:** 4:00 pm – 5:00 pm**VENUE:** Innoshima-mukunoura-cho, Onomichi City**DIRECTIONS:** 20 minutes' drive from the Innoshima-kita I.C. on the Shimanami Kaido Expressway.**ENQUIRIES:** Innoshima Tourist Association 0845-26-6111

☐ This is designated as an Important Intangible Folk Cultural Property of Hiroshima Prefecture.

Saturday, August 17**Setoda-cho Summer Festival** せとだちょうなつ 瀬戸田町夏まつり**TIME:** 5:00 pm – 9:00 pm (Fireworks: 8:30 pm – 9:00 pm)**VENUE:** Setoda Sunset Beach, Setoda-cho, Onomichi City**DIRECTIONS:** ① 15 minutes' drive from the Ikuchijima-kita I.C. on the Shimanami Kaido Expressway.

② Get on a ferry from Mihara or Onomichi port and get off at Setoda port. Then, take a bus from there and get off at Sunset Beach.

ENQUIRIES: Executive Committee 0845-27-2008☐ The fireworks festival will be postponed until August 18 (Sun.) if it rains heavily on the 17th.

Please feel free to contact the International Exchange Lounge at 082-247-9715.

E-mail: golounge@pcf.city.hiroshima.jp

August 2019

Saturday, August 24**Innoshima Suigun Festival: Fire Festival** いんのしますいぐん 因島水軍まつり ひ 火まつり**TIME:** 4:30 pm – 9:40 pm**VENUE:** Shimanami Beach and Innoshima Amenity Park, Innoshima, Onomichi City**DIRECTIONS:** ① Take a Flower Liner Express Bus for Innoshima from Hiroshima Bus Center (Sogo Hiroshima Department Store, 3F) and get off at Innoshima Ohashi. 10 minutes' walk from there.

② 10 minutes' drive from the Innoshima-Kita I.C. on the Shimanami Kaido Expressway.

ENQUIRIES: Innoshima Suigun Festival Executive Committee 0845-26-6212

▣ Innoshima was one of the fortified trading posts of the Murakami *Suigun* which traded with Asian countries and held power over the sea around Japan between the Muromachi and Warring States periods.

▣ Sea Festival on August 25. Please see below for more information.

Sunday, August 25**Innoshima Suigun Festival: Sea Festival** いんのしますいぐん 因島水軍まつり うみ 海まつり**TIME:** 8:30 am – 4:30 pm**VENUE:** Shimanami Beach and Innoshima Amenity Park, Innoshima, Onomichi City**DIRECTIONS:** ① Take a Flower Liner Express Bus for Innoshima from Hiroshima Bus Center (Sogo Hiroshima Department Store, 3F) and get off at Innoshima Ohashi. 10 minutes' walk from there.

② 10 minutes' drive from the Innoshima-Kita I.C. on the Shimanami Kaido Expressway.

DETAILS: There will be a *Kohaya* race. (*Kohaya* is a type of small swift boat used by the likes of the Murakami *Suigun* in war.)**ENQUIRIES:** Innoshima *Suigun* Festival Executive Committee 0845-26-6212**Sunday, August 25****Shobara Fireworks Festival** しょうばらなつ 庄原夏まつり はなびたいかい 花火大会**TIME:** 7:30 pm – 8:30 pm**VENUE:** Shobara Ueno Park, Shobara City**DIRECTIONS:** 10 minutes' walk from JR Bingo-shobara Station (JR Geibi Line).**ENQUIRIES:** Shobara Tourist Association, Shobara Branch 0824-73-0602

▣ The fireworks will be postponed until August 26 (Mon.) if it rains heavily on the 25th.

▣ The Shobara “*Yoitoko*” Festival will also be held on August 24 & 25.

Saturday, August 31**The 30th Miyoshi Shimin Noryo Fireworks Festival**だい 第30回 かい みよし市民納涼 しみんのうりようはなび 花火まつり**TIME:** 7:30 pm – 9:00 pm**VENUE:** Downstream of Tomoe-bashi Bridge, Miyoshi City**DIRECTIONS:** ① From Hiroshima Bus Center (Sogo Hiroshima Department Store, 3F), take an express bus bound for Miyoshi / Shobara and get off at JR Miyoshi Station. The venue is 15 minutes' walk from there.

② 15 minutes' drive from the Miyoshi I.C. on the Chugoku Expressway.

ENQUIRIES: Miyoshi City Tourist Association 0824-63-9268

▣ This will be postponed until September 14 (Sat.) if it rains heavily on the 31st.

Please feel free to contact the International Exchange Lounge at 082-247-9715.

E-mail: golounge@pcf.city.hiroshima.jp

August 2019

Saturday, August 31**Akitakata Fireworks Festival** あきたかたはなびたいかい
安芸高田花火大会**TIME:** From 7:30 pm onwards ✧ Opening ceremony: from 5:00 pm onwards**VENUE:** Nodogoe Park, Yachiyo-cho, Akitakata City**DIRECTIONS:** ① 30 minutes' drive from JR Kabe Station (JR Kabe Line).

② 15 minutes' drive from the Chiyoda I.C. on the Chugoku Expressway.

EINQUIRIES: Executive Committee 0826-46-7055☐ This will be canceled if it rains heavily on the 31st.**Saturday, August 31****Takehara Fireworks Festival** なつ はなびたいかい
たけはら夏まつり花火大会**TIME:** 8:00 pm – 8:30 pm**VENUE:** Offshore from J-POWER Ground, Takehara City**DIRECTIONS:** ① 10 minutes' walk from JR Daijo Station (JR Kure Line).

② 25 minutes' drive from the Kouchi I.C. on the Chugoku Expressway.

ENQUIRIES: Takehara City Tourist Association 0846-22-4331☐ This will be canceled if it rains heavily on the 31st.**Saturday, September 28 & Sunday, September 29**

👏 Application period to participate in this event has already concluded. 👏

The 8th Costume Festival in Onomichi だい かいぜんこくか そうたいかい
第8回全国仮装大会 in おのみち**TIME:** ◆ Sept. 28: 3:00 pm – 9:00 pm ◆ Sept. 29: From 11:00 am onwards**VENUE:** Around Hondori shopping street, *Shimanami Koryū Kan* and other venues, Onomichi City**DIRECTIONS:** 3 minutes' walk from JR Onomichi Station (JR Sanyo Line).**DETAILS:** Sept. 28 – Pre event: Costume Party

Sept. 29 – Main event: Costume Parade

ENQUIRIES: Executive Committee (inside Onomichi Tourist Association) 0848-36-5495**Sunday, October 20****Setouchi Shimanami / Yumeshima Cycling Festival 2019**せとうち
瀬戸内しまなみ・ゆめしまサイクリングフェス 2019**TIME:** 7:00 am – 5:00 pm**VENUE:** Setouchi Shimanami & Yumeshima Kaido, Onomichi & Imabari City**HOW TO PARTICIPATE:** You can enroll online or by telephone until September 5 (Thurs.).✧ Website: <http://setouchi-shimanami-yumeshima.com/>

✧ Telephone: 0570-039-846 (10:00 am – 5:30 pm on weekdays)

✧ Enrollment will be closed when all spots are full.

PARTICIPATION FEE: The participation fee depends on the course.

✧ There will be seven courses.

ENQUIRIES: Shimanami Japan 0848-22-4073Website: <http://setouchi-shimanami-yumeshima.com/>**Events Held in Yamaguchi Prefecture****Saturday, June 1 – Tuesday, September 10****Cormorant Fishing in Iwakuni** きんたいきょう うかい
錦帯橋の鵜飼**TIME:** 7:00 pm – 9:00 pm

Please feel free to contact the International Exchange Lounge at 082-247-9715.

E-mail: golounge@pcf.city.hiroshima.jp

August 2019

PLACE: Nishiki-gawa River & Kintaikyo Bridge, Iwakuni City

DIRECTIONS: Get off at JR Iwakuni Station (JR Sanyo Line) and take a bus bound for Kintaikyo Bridge.
Get off at Kintaikyo (a 20 min. bus ride).

PASSENGER FARE: Adults: ¥2,000 Children: ¥1,000

◇ There will be a different fare on August 3, the day of the fireworks festival.

RESERVATIONS & ENQUIRIES: Iwakuni City Tourist Association & *Ukai Office* 0827-28-2877

▣ Originating about 400 years ago, cormorant fishing under lit lanterns is a summer tradition in Iwakuni.

Saturday, August 3

Nishiki-gawa River Water Festival

にしきがわみず さいてん
錦川水の祭典

TIME: ◆ Festival: 9:00 am – 9:30 pm

◆ Fireworks Festival: 8:00 pm – 9:30 pm

VENUE: Around Kintaikyo Bridge, Iwakuni City

DIRECTIONS: Take a bus bound for Kintaikyo Bridge from JR Iwakuni Station (JR Sanyo Line) and get off at Kintaikyo (a 20 min. bus ride).

◇ Extra buses will run from the station on the event day.

ENQUIRIES: Iwakuni City Tourist Association 0827-41-2037 (8:30 am – 5:15 pm)

▣ The fireworks will be postponed until August 31 (Sat.) if it rains on the 3rd.

▣ An *Iwakuni taiko* (traditional Japanese drum) performance will also be held in the evening.

Tuesday, August 13

Yanai Kingyo Chochin (Goldfish Lantern) Festival

やないきんぎょ まつ
柳井金魚ちょうちん祭り

TIME: 4:30 pm – 9:00 pm (Fireworks: 8:45 pm – 9:00 pm)

VENUE: Around JR Yanai Station (JR Sanyo Line), Yanai City

DIRECTIONS: Get off at JR Yanai Station (JR Sanyo Line).

ENQUIRIES: *Shoko Kanko Ka*, Yanai City Hall 0820-22-2111

▣ Two thousand goldfish-shaped lanterns will be hung and there will be old-style vendors, creating an atmosphere reminiscent of the Edo Period.

▣ This will be cancelled if it rains heavily on the day.

Other Event

Setouchi Triennale 2019

せとうちこくさいげいじゆつさい
瀬戸内国際芸術祭2019

▣ This is an art festival held throughout the Seto Inland Sea.

PERIOD: ◆ **Summer:** July 19 (Fri.) – August 25 (Sun.)

◆ **Autumn:** September 28 (Sat.) – November 4 (Mon.)

VENUE: Around the below 11 islands in the Seto Inland Sea, Takamatsu port (Kagawa Prefecture) and Uno port (Okayama Prefecture)

(Naoshima, Teshima, Megijima, Ogijima, Shodoshima, Oshima, Inujima, Honjima
(autumn only), Takamijima (autumn only), Awashima (autumn only), Ibukijima
(autumn only))

OFFICIAL WEBSITE: <https://setouchi-artfest.jp/en/>

◇ Please see this official website for more information such as ticket information and access to each island.

▣ Please take this opportunity to enjoy art and the islands of the Seto Inland Sea.



Please feel free to contact the International Exchange Lounge at 082-247-9715.

E-mail: golounge@pcf.city.hiroshima.jp

August 2019