

Seasonal Events Information

February 2012

📌 Event schedules are subject to change.
Please contact the event office before you go.



Fri., February 3

Setsubun-sai Festival in Miyajima せつぶんさい 節分祭

TIME: 11:00am

PLACE: Daishoin Temple, Miyajima

ACCESS: Get off at JR Miyajima-guchi Station (JR Sanyo Line) or Miyajima Streetcar Stop (Hiroden Streetcar Miyajima Line), then take a ferry.

INQUIRIES: Daishoin Temple 0829-44-0111

Ritual & *mame-maki* (bean-throwing) for good luck

Fri., February 3

Setsubun-e at Saikoji Temple さいこくじ せつぶんえ 西國寺 節分会

TIME: 11:00am ~ 12:30pm

PLACE: Saikokuji Temple, Onomichi City

ACCESS: ① It is a 20 min. walk from JR Onomichi Station (JR Sanyo Line).

② At JR Onomichi Station (JR Sanyo Line), take a bus going east and get off at Saikokuji-shita. It is a 5 min. walk from there.

INQUIRIES: Saikokuji Temple 0848-37-0321

Ritual, *taiko* (traditional Japanese drum) performance, *mame-maki* (bean-throwing) for good luck



Fri., February 3

Setsubun-sai & Hodan-kai at Bingo-ichinomiya Kibitsu Shrine

びんごいちのみや きびつじんしゃ せつぶんさい ほうだんかい ふしんじ
備後一宮・吉備津神社 節分祭・放談会 (ほら吹き神事)

TIME: *Setsubun-sai* (Bean-throwing) – 7:00pm / *Hodan-kai* (Big talker competition) – 8:00pm

PLACE: Bingo-ichinomiya Kibitsu Shrine, Fukuyama City

ACCESS: Get on the JR Geibi Line train at JR Hiroshima Station and get off at JR Shiomachi Station.

Then, change train lines to the JR Fukuen Line, and get off at JR Shinichi Station. Take a bus bound for 金丸 (Kanemaru) and get off at Ichinomiya (a 5 min. bus ride).

INQUIRIES: Bingo-ichinomiya Kibitsu Shrine 0847-51-3395

Sat., February 4 & Sun., February 5

Antique Market in Onomichi だいいこつとうまつり おのみち大骨董祭

TIME: 9:00am ~ 4:00pm

PLACE: *Minato Oasis Onomichi*, Nishi-gosho-cho, Onomichi City

ACCESS: It is a 5 min. walk from JR Onomichi Station (JR Sanyo Line).

INQUIRIES: *Onomichi-shi Kanko Kyokai* (Tourist Association) 0848-37-9736

Sun., February 5

Flea Market Saka さか フリーマーケット坂

TIME: 9:00am ~ 3:00pm

PLACE: Bayside Beach Saka, Saka-cho, Aki-gun

ACCESS: It is a 2 min. walk from JR Mizujiri Station (JR Kure Line).

INQUIRIES: Hiroshima Recycle Association 090-3630-6252 (Ikeda)

Selling of recycled goods, daily necessities, etc. ☁ The market will be cancelled if it rains heavily.

Please feel free to contact the International Exchange Lounge at 082-247-9715.

E-mail: golounge@pcf.city.hiroshima.jp

February 2012

Sun., February 5**Onabe Festival at Kure Portpier Park** くれ おおなべ 呉ポ一鍋まつり**TIME:** 10:00am ~ 3:00pm**PLACE:** Kure Portpier Park, Kure City**ACCESS:** Get off at JR Kure-Portpier Station (JR Kure Line).**INQUIRIES:** Kure Portpier Park 0823-30-0211

Nabemono, a one-pot dish, is eaten from a large pot and is a typical winter food in Japan. You can taste various kinds of *nabemono* at the festival.

**Sun., February 5****Hiroshima Oyster Charity Bazaar** ひろしま 広島かきチャリティバザール**TIME:** 10:00am *Event will end when the oysters are sold out.**PLACE:** In front of Volvo Cars Hiroshima Higashi, Deshio-cho, Minami-ku, Hiroshima City**ACCESS:** Get off at the Hiroden Minami Kuyakusho-mae Streetcar Stop (Line No.5). It is a 10 min. walk from there.**INQUIRIES:** Hiroshima-shi Gyogyo Kyodo Kumiai (Fisheries Cooperative Association) 082-251-5221

You can buy fresh oysters and also taste various oyster dishes.

Sun., February 5**Ohno Oyster Festival** おおの 大野かきフェスティバル**TIME:** 10:30am ~ 3:30pm**PLACE:** Miyahama Onsen Event Place, Hatsukaichi City**ACCESS:** Take a free shuttle bus at JR Ohno-ura Station (JR Sanyo Line).**INQUIRIES:** Hatsukaichi-shi Kanko Kyokai (Tourist Association), Ohno Branch 0829-30-3533

You can buy fresh oysters and also taste various oyster dishes.

Sun., February 5**Etajima Oyster Festival** えたじまし まつ 江田島市カキ祭り**TIME:** 10:00am ~ 2:00pm**PLACE:** Koyo Minato Koen (Park), Etajima-cho, Etajima City**ACCESS:** Get on a ferry at Hiroshima Port and get off at Koyo Port (a 22 min. ferry ride). It is a 3 min. walk from there.**INQUIRIES:** Shoko Kanko Ka, Etajima City Hall 0823-40-2771

You can buy fresh oysters and also taste various oyster dishes.

**Sun., February 5****Ondo Oyster Festival** おんど 音戸かきまつり**TIME:** 9:00am *Event will end when the oysters are sold out.**PLACE:** Ondo Shimin Center, Ondo-cho, Kure City**ACCESS:** Take a bus at JR Kure Station (JR Kure Line) and get off at Ondo Shimin Center-mae (a 25 min. bus ride).**INQUIRIES:** Ondo Gyogyo Kyodo Kumiai (Fisheries Cooperative Association) 0823-52-2561

You can buy fresh seafood and also taste various oyster dishes.

Wed., February 8 ~ Mon., February 13**Umemi (Plum Blossoms-viewing) Tea Ceremony at Shotoen** しょうとうえん うめみちかい 松濤園 梅見茶会**TIME:** 9:30am ~ 4:00pm**PLACE:** Shotoen, Shimokamagari-cho, Kure City**ACCESS:** At the JR Hiro Station (JR Kure Line), take a bus bound for Kamagari and get off at San-no-se.

Please feel free to contact the International Exchange Lounge at 082-247-9715.

E-mail: golounge@pcf.city.hiroshima.jp

February 2012

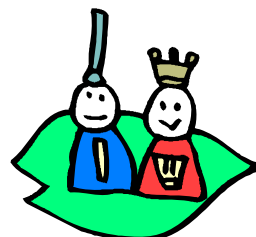
FEE: Free for the tea ceremony

*Admission fee for the garden is required.

〔 Adults & University students- ¥800, High school students - ¥480
Junior high & Elementary school students - ¥320 〕

INQUIRIES: Shotoen 0823-65-2900

Tea-making demonstration by the Urasenke will only be held on the 12th.



Thu., February 9 ~ Sun., March 11

Hina Matsuri (Girl's Festival) in Tomo

とも まちなみ まつり
鞆・町並ひな祭

TIME: 10:00am ~ 4:00pm

PLACE: Tomo-no-ura, Fukuyama City

ACCESS: Take a Tomotetsu bus at JR Fukuyama Station (JR Sanyo Line) and get off at Tomo-no-ura (a 30 min. bus ride).

ADMISSION FEE: Free *Some places will require an admission fee.

INQUIRIES: Executive Committee 080-5614-2778

Fukuyama-shi Tomo-no-ura Rekishi Minzoku Shiryo-kan 084-982-1121

Fri., February 10

Sakagura Walking Tour (Free)

さかぐら
酒蔵のまち てくてくガイド

TIME: Tour will start on an as-needed basis between 10:00am and 11:00am.

MEETING PLACE: In front of JR Saijo Eki-mae Kanko Annai-sho (Tourist Information), Higashi Hiroshima City

ACCESS: Get off at JR Saijo Station (JR Sanyo Line).

FEE: Free

INQUIRIES: Higashi Hiroshima-shi Kanko Kyokai (Tourist Association) 082-420-0310

Saijo Eki-mae Kanko Annai-sho (Tourist Information) 082-421-2511 (Fax is also available.)

A volunteer guide will show you *Sakagura-dori* (Sake Brewery Street). During the tour you will be able to taste sake and the purified water that is used to make the sake.

*The guide will be held in Japanese. If you need an English guide, please inquire at the Tourist Information center in advance.

**The tour is also available on other days, but you are required to pay and also make an advance reservation.

Fri., February 10 ~ Sun., February 12

Mihara Shinmei-ichi Market

みほらしんめいいち
三原神明市

TIME: 9:00am ~ 8:00pm

PLACE: Around the north area of JR Mihara Station, Mihara City

ACCESS: Get off at JR Mihara Station (JR Sanyo Line).

INQUIRIES: Ukishiro Lobby 0848-67-5877 HP: <http://www.mhr-cci.or.jp/shinmei/>

It is a festival with more than 440 years of tradition. Stalls selling plants, *daruma* (Dharma dolls), etc. will be set up.

Sat., February 11

Kure Suisan Festival

くれすいさん
呉水産まつり

TIME: 10:00am *Event will end when the oysters are sold out.

PLACE: Kure-shi Chuo Koen (Kure Central Park), Kure City

ACCESS: It is a 10 min. walk from JR Kure Station (JR Kure Line)

INQUIRIES: Executive Committee 0823-25-3319

You can buy fresh oysters and also taste various oyster dishes.



Please feel free to contact the International Exchange Lounge at 082-247-9715.

E-mail: golounge@pcf.city.hiroshima.jp

February 2012

Sat., February 11 & Sun., February 12**The 28th Miyajima Oyster Festival**だい かいみやじま まつ
第28回宮島かき祭り**TIME:** 10:00am ~ 3:00pm *Event will end when the oysters are sold out.**PLACE:** In front of Miyajima Pier, Miyajima-cho, Hatsukaichi City**ACCESS:** Get off at JR Miyajima-guchi Station (JR Sanyo Line) or Miyajima Streetcar Stop (Hiroden Streetcar Miyajima Line), then take a ferry.**INQUIRIES:** *Miyajima Kanko Kyokai* (Tourist Association) 0829-44-2011

You can buy fresh oysters and also taste various oyster dishes.

Sat., February 11 & Sun., February 12**Otagawa River Flea Market**おおたがわゆめひろば
太田川夢広場フリーマーケット**TIME:** 8:00am ~ 3:00pm**PLACE:** Otagawa Riverbank between Asa-Ohashi Bridge and Takase-Ohashi Bridge**ACCESS:** Get off at JR Bairin Station (JR Kabe Line). It is a 7 min. walk towards the river.**INQUIRIES:** Hiroshima Recycle Association 090-3630-6252 (Ikeda)

Selling recycled goods, daily necessities, etc.

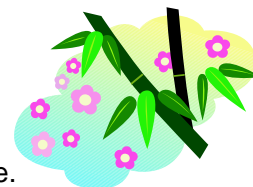
☞ The market will be cancelled if it rains heavily.

Sun., February 12**Umemi (Plum Blossoms-viewing) Tea Ceremony**うめみちがかい
梅見茶会**TIME:** 10:00am ~ 3:00pm**PLACE:** Shukkeien Garden**ACCESS:** Take a streetcar on the Hiroden Hakushima Line and get off at Shukkeien-mae.

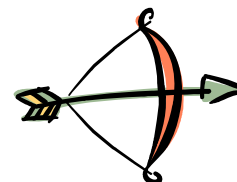
It is a 5 min. walk from there.

FEE: ¥800 (*Matcha*, green powdered tea) / ¥600 (*Amazake*, Japanese sweet sake)

*Admission fee for the garden is also required.

〔 Adults - ¥250, University & High school students - ¥150
Junior high & Elementary school students - ¥100 〕**INQUIRIES:** Shukkeien Garden 082-221-3620*Amazake* is alcohol, so please don't drink and drive.**Sun., February 12****Oyumi-shinji (Ritual) at Nunakuma Shrine**ゆみしんじ
お弓神事**TIME:** 2:00pm**PLACE:** Nunakuma Shrine, Tomo-cho, Fukuyama City**ACCESS:** Take a Tomotetsu bus at JR Fukuyama Station (JR Sanyo Line) and get off at Tomo-no-ura (a 30 min. bus ride). It is a 10 min. walk from there.**INQUIRIES:** Nunakuma Shrine 084-982-2050

It is a ritual to pray for good health and fortune throughout the year by shooting an arrow into a target. This ritual is designated as Fukuyama City's intangible folklore cultural asset.

**Sun., February 12****Tahara Oyster Festival**たはら
田原かきまつり**TIME:** 9:00am *Event will end when the oysters are sold out.**PLACE:** In front of *Tahara Gyogyo Kyodo Kumiai* (Fisheries Cooperative Association), Tahara, Onodo-cho, Kure City**ACCESS:** Take a bus at JR Kure Station (JR Kure Line) and get off at Tahara Gyokyo-mae (a 30 min. bus ride).**INQUIRIES:** *Tahara Gyogyo Kyodo Kumiai* (Fisheries Cooperative Association) 0823-52-2900

You can buy fresh seafood and also taste various oyster dishes.

Please feel free to contact the International Exchange Lounge at 082-247-9715.

E-mail: golounge@pcf.city.hiroshima.jp

February 2012

Sun., February 12**Hiwatari-hiho, Spring Festival at Jurin-in Temple** ひわた ひほう じゅうりんいんはる たいさい
火渡り秘法 (十輪院春の大祭)**PLACE:** Jurin-in Temple, Fuchu City**ACCESS:** It is 50 min. by car from Mihara Kui I.C. (Sanyo Expressway)**INQUIRIES:** Jurin-in Temple 0847-45-3225

It is a ceremony that involves walking over fire to pray for good luck throughout the year. Anyone can participate in this ceremony.

Sat., February 18**Ofuku Biraki-sai & Hadaka Matsuri** おふくびらきさい 御福開祭・はだか祭り**TIME:** *Ofuku Biraki-sai* (ritual) – 7:00pm, *Hadaka Matsuri* – 9:00pm**PLACE:** Kui Inari Shrine, Mihara City**ACCESS:** ① Take a bus bound for Kozan at JR Mihara Station (JR Sanyo Line) and get off at Kui Shimin Boyoin-mae (a 30 min. bus ride). It is a 5 min. walk from there.

② It is 20 min. by car from Mihara Kui I.C. (Sanyo Expressway).

INQUIRIES: *Mihara Kanko Kyokai* (Tourist Association) 0848-63-1481

Hadaka Matsuri is a festival where a group of young men wearing only loincloths rush onto the temple after purifying their bodies in the river. Then, they scramble for a pair of *shingi* or *fukugi* (sacred wands) thrown down into the darkness by a temple priest from the upper floor of the temple. The person who catches the sacred wand is assured of happiness throughout the year.

Hadaka Matsuri is a traditional Japanese festival. It is held at various areas in Japan during this season. *Hadaka Matsuri* at Kui Inari Shrine is the only *Hadaka Matsuri* held in Hiroshima Prefecture.

**Sat., February 18 & Sun., February 19****Moto-ujina-guchi Flea Market** もとうじなぐち 元宇品ロフリーマーケット**TIME:** 9:00am ~ 3:00pm**PLACE:** *Niji Hiroba*, Moto-Ujina-guchi**ACCESS:** Take a bus bound for Hiroshima Port or streetcar No. 1, 3 or 5 and get off at Moto-ujina-guchi.**INQUIRIES:** Hiroshima Recycle Association 090-3630-6252 (Ikeda)

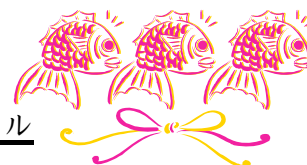
Selling of recycled goods, daily necessities, etc. ☁ The market will be cancelled if it rains heavily.

Sun., February 19**Jigozen Oyster Charity Bazaar** じごぜん 地御前かきチャリティバザール**TIME:** 9:00am ~ 1:00pm**PLACE:** In front of *Jigozen Gyogyo Kyodo Kumiai* (Fisheries Cooperative Association), Jigozen, Hatsukaichi City**ACCESS:** It is a 3 min. walk from Hiroden Jigozen-mae Streetcar Stop (Hiroden Miyajima Line).**INQUIRIES:** *Jigozen Gyogyo Kyodo Kumiai* (Fisheries Cooperative Association) 0829-36-1214

You can buy fresh oysters and also taste various oyster dishes.

Sun., February 19**Takarajima Kurahashi Festival** たからじま 宝島くらはしフェスティバル**TIME:** 10:00am ~ 3:00pm**PLACE:** *Katsura-hama Fureai Center*, Kurahashi-cho, Kure City**ACCESS:** Take a bus from JR Kure Station (JR Kure Line) and get off at Katsura-hama / Onsen Kan (a 70 min. bus ride).**INQUIRIES:** Takarajima Kurahashi Festival Executive Committee 0823-53-1111

You can buy fresh seafood and also taste various oyster dishes.



Please feel free to contact the International Exchange Lounge at 082-247-9715.

E-mail: golounge@pcf.city.hiroshima.jp

February 2012

Mon., February 20**Hatsuka-no-ichi Market** はつか いち
廿日の市**TIME:** 8:30am ~ 10:30am**PLACE:** *Shingu Chuo Koen* (Park), Hatsukaichi City**ACCESS:** Get off at Hatsukaichi Shiyakusho-mae (Hiroden Streetcar Miyajima Line). It is a 3 min. walk from the stop.**INQUIRIES:** *Hatsukaichi-shi Kanko Kyokai* (Tourist Association) 0829-31-5656**Sat., February 25 & Sun., February 26****Moto-ujina-guchi Flea Market** もとうじなぐち
元宇品ロフリーマーケット**TIME:** 9:00am ~ 3:00pm**PLACE:** *Niji Hiroba*, Moto-Ujina-guchi**ACCESS:** Take a bus bound for Hiroshima Port or streetcar No. 1, 3 or 5 and get off at Moto-ujina-guchi.**INQUIRIES:** Hiroshima Recycle Association 090-3630-6252 (Ikeda)

Selling of recycled goods, daily necessities, etc.

☞ The market will be cancelled if it rains heavily.

Sun., February 26**The 22nd Hiroshima City Suisan Festival** だい かいひろしましすいさんまつり
第22回広島市水産祭り**TIME:** 10:00am ~ 2:00pm *Event will end when the oysters are sold out.**PLACE:** *Hiroshima-shi Suisan Shinko Center* (Fishery and Marine Products Promotion Center), Shoko Center, Nishi-ku, Hiroshima City**ACCESS:** ① It is a 15 min. walk from the Hiroden Suzugamine-Joshidai-mae Streetcar Stop (Miyajima Line).

② At JR Hiroshima Station, take a bus bound for Shoko Center and get off at Inokuchi-shako (a 60 min. bus ride). It is a 5 min. walk from there.

INQUIRIES: *Norin Suisan Bu Suisan Ka* (Agriculture, Forestry and Fishery Department, Marine Products Section), Hiroshima City Hall 082-504-2252 *082-277-6609 on the event day

You can buy fresh seafood and also taste various oyster dishes.

Sun., February 26**Saka-cho Suisan Festival** さかちょうぎょきょうすいさん
坂町漁協水産まつりチャリティバザール**TIME:** 9:00am *Event will end when the oysters are sold out.**PLACE:** In front of JR Saka Station (JR Kure Line), Heisei-gahama, Saka-cho, Aki-gun**ACCESS:** It is a 2 min. walk from JR Saka Station (JR Kure Line).**INQUIRIES:** *Saka-cho Gyogyo Kyodo Kumiai* (Fisheries Cooperative Association) 082-885-0009

You can buy fresh oysters and also taste various oyster dishes.

**Sun., February 26****Hayase Oyster Festival** はやせ
早瀬かきまつり**TIME:** 8:30am *Event will end when the oysters are sold out.**PLACE:** Upper side open space of *Moto Hayase Shogakko* (elementary school), Ondo-cho, Kure City**ACCESS:** Take a bus at JR Kure Station (JR Kure Line) and get off at Hayase Hoikusho-mae or Hayase-ohashi (a 35 min. bus ride).**INQUIRIES:** *Hayase Gyogyo Kyodo Kumiai* (Fisheries Cooperative Association) 0823-56-0470

You can buy fresh seafood and also taste various oyster dishes.

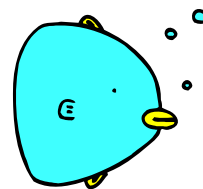
Please feel free to contact the International Exchange Lounge at 082-247-9715.

E-mail: golounge@pcf.city.hiroshima.jp

February 2012

Sun., February 26**Yasuura Oyster Festival**やすうら まつ
安浦かき祭り**TIME:** 9:00am ~ 2:00pm**PLACE:** Minari Shinkai, Yasuura Chuo, Kure City**ACCESS:** It is a 10 min. walk from JR Yasuura Station (JR Kure Line).**INQUIRIES:** Yasuura Gyogyo Kyodo Kumiai (Fisheries Cooperative Association)

You can buy fresh seafood and also taste various oyster dishes.

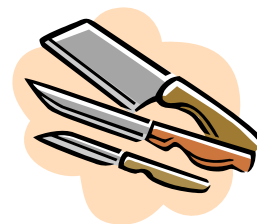


0823-84-2003

Sat., March 3 & Sun., March 4**Antique Market in Onomichi**だいこっとうまつり
おのみち大骨董祭**TIME:** 9:00am ~ 4:00pm**PLACE:** Minato Oasis Onomichi, Nishi-gosho-cho, Onomichi City**ACCESS:** It is a 5 min. walk from JR Onomichi Station (JR Sanyo Line).**INQUIRIES:** Onomichi-shi Kanko Kyokai (Tourist Association) 0848-37-9736**Sun., March 4****Flea Market Saka**さか
フリーマーケット坂**TIME:** 9:00am ~ 3:00pm**PLACE:** Bayside Beach Saka, Saka-cho, Aki-gun**ACCESS:** It is a 2 min. walk from JR Mizujiri Station (JR Kure Line).**INQUIRIES:** Hiroshima Recycle Association 090-3630-6252 (Ikeda)

Selling of recycled goods, daily necessities, etc.

☛ The market will be cancelled if it rains heavily.

**Thu., March 8****Memorial Service for Used Kitchen Knives**ほうちょうくよう
庖丁供養**TIME:** 11:00am**PLACE:** Daishoin Temple, Miyajima**ACCESS:** Get off at JR Miyajima-guchi Station (JR Sanyo Line) or Miyajima Stop (Hiroden Streetcar Miyajima Line), then take a ferry.**INQUIRIES:** Daishoin Temple 0829-44-0111

To show gratitude for used kitchen knives.



Please feel free to contact the International Exchange Lounge at 082-247-9715.

E-mail: golounge@pcf.city.hiroshima.jp

February 2012